

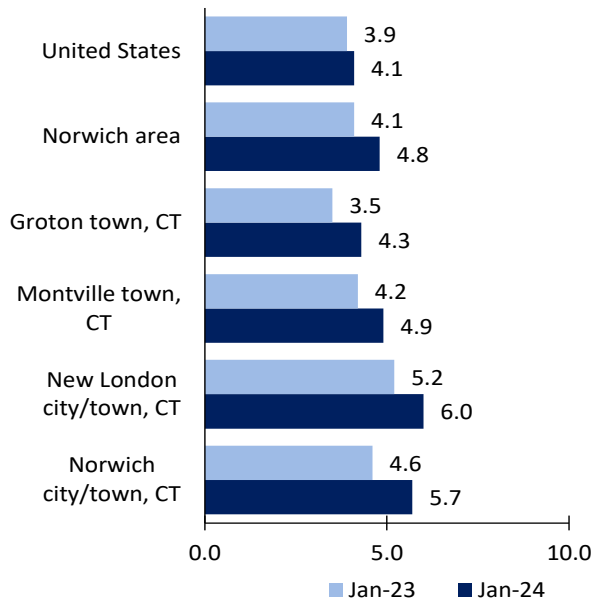
Norwich Area Economic Summary

Updated March 14, 2024

This summary presents a sampling of economic information for the area; supplemental data are provided for regions and the nation. Subjects include **unemployment, employment, wages, prices, spending, and benefits**. All data are not seasonally adjusted and some may be subject to revision. Area definitions may differ by subject. For more area summaries and geographic definitions, see www.bls.gov/regions/economic-summaries.htm.

Unemployment rates for the nation and selected areas

Unemployment rates



Source: U.S. BLS, Local Area Unemployment Statistics.

Average weekly wages for all industries by county

Norwich area, third quarter 2023

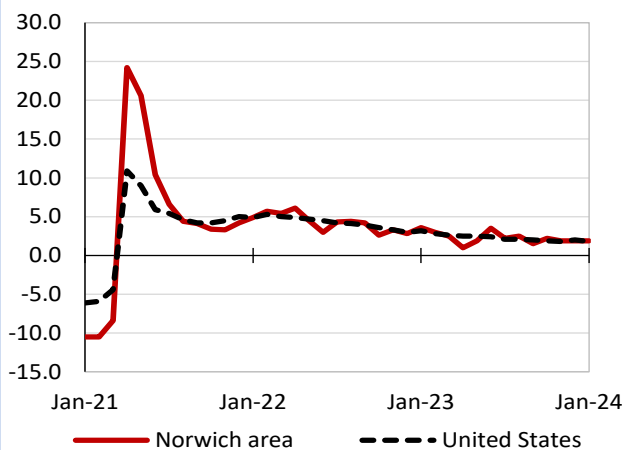
(U.S. = \$1,334; Area = \$1,256)



Source: U.S. BLS, Quarterly Census of Employment and Wages.

Over-the-year changes in employment on nonfarm payrolls and employment by major industry sector

12-month percent changes in employment



Source: U.S. BLS, Current Employment Statistics.

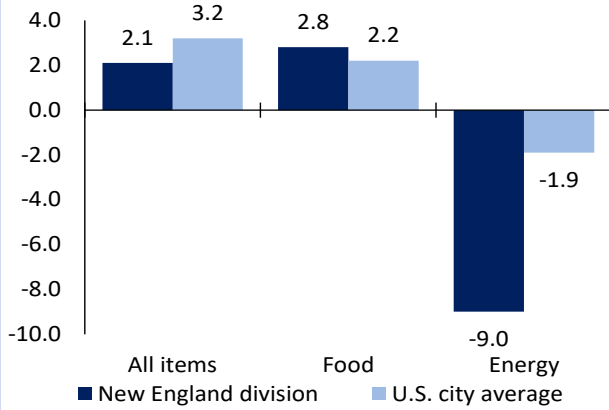
Norwich area employment (number in thousands)	Jan. 2024	Change from Jan. 2023 to Jan. 2024	
		Number	Percent
Total nonfarm	124.4	2.3	1.9
Mining, logging, and construction	3.7	-0.2	-5.1
Manufacturing	20.8	1.5	7.8
Trade, transportation, and utilities	20.7	-0.4	-1.9
Information	1.3	0.0	0.0
Financial activities	2.8	0.1	3.7
Professional and business services	9.7	0.2	2.1
Education and health services	21.9	0.8	3.8
Leisure and hospitality	14.2	0.2	1.4
Other services	3.2	0.0	0.0
Government	26.1	0.1	0.4

Source: U.S. BLS, Current Employment Statistics.



Over-the-year change in the prices paid by urban consumers for selected categories

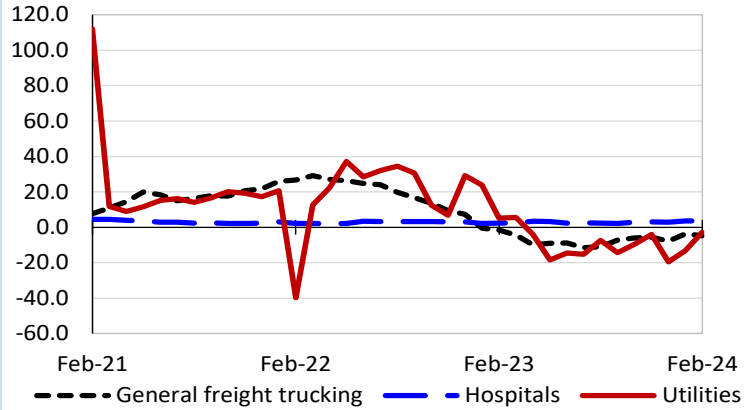
12-month percent change in CPI-U, February 2024



Source: U.S. BLS, Consumer Price Index.

Over-the-year changes in the selling prices received by producers for selected industries nationwide

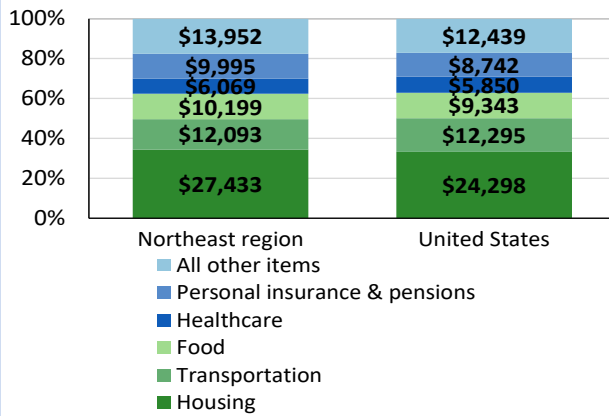
12-month percent changes in PPI



Source: U.S. BLS, Producer Price Index.

Average annual spending and percent distribution for selected categories

Average annual expenditures, United States and Northeast region, 2022



Source: U.S. BLS, Consumer Expenditure Survey.

Average hourly wages for selected occupations

Occupation	Norwich area	United States
All occupations	\$30.70	\$29.76
Carpenters	30.33	27.99
Waiters and waitresses	19.33	15.87
Bartenders	18.68	16.58
Maids and housekeeping cleaners	15.73	15.35
Food preparation workers	15.68	14.77
Cashiers	14.39	13.81

Source: U.S. BLS, Occupational Employment and Wage Statistics, May 2022.

Employer costs per hour worked for wages and selected employee benefits by geographic division

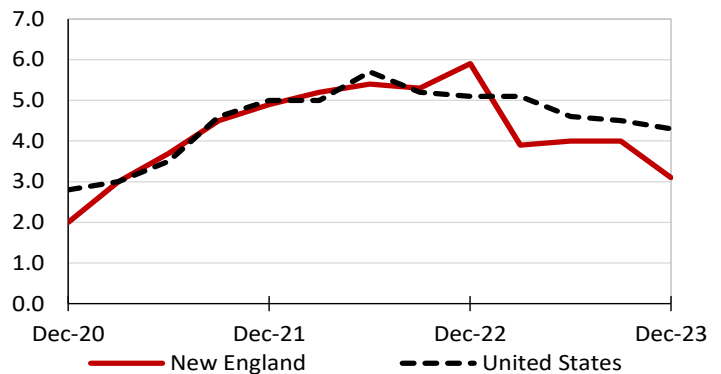
Private industry, December 2023	New England (1)	United States
Total compensation	\$51.73	\$43.11
Wages and salaries	35.15	30.33
Total benefits	16.58	12.77
Paid leave	4.24	3.26
Vacation	2.18	1.67
Supplemental pay	2.71	1.71
Insurance	4.04	3.14
Retirement and savings	1.96	1.50
Legally required benefits	3.64	3.17

(1) The states that compose the New England census division are: CT, ME, MA, NH, RI, and VT.

Source: U.S. BLS, Employer Costs for Employee Compensation.

Over-the-year changes in wages and salaries

12-month percent changes in ECI



Source: U.S. BLS, Employment Cost Index.