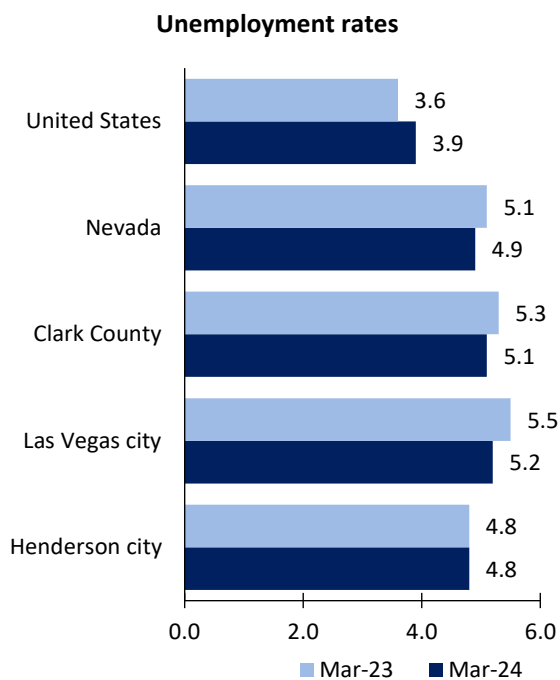


Las Vegas Area Economic Summary

Updated May 06, 2024

This summary presents a sampling of economic information for the area; supplemental data are provided for regions and the nation. Subjects include **unemployment, employment, wages, prices, spending, and benefits**. All data are not seasonally adjusted and some may be subject to revision. Area definitions may differ by subject. For more area summaries and geographic definitions, see www.bls.gov/regions/economic-summaries.htm.

Unemployment rates for the nation and selected areas

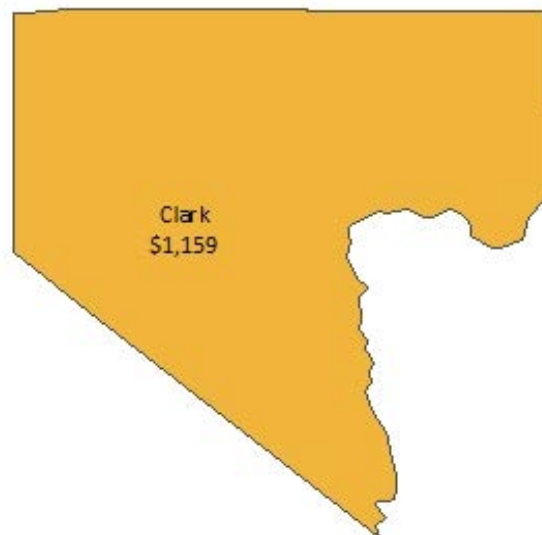


Source: U.S. BLS, Local Area Unemployment Statistics.

Average weekly wages for all industries by county

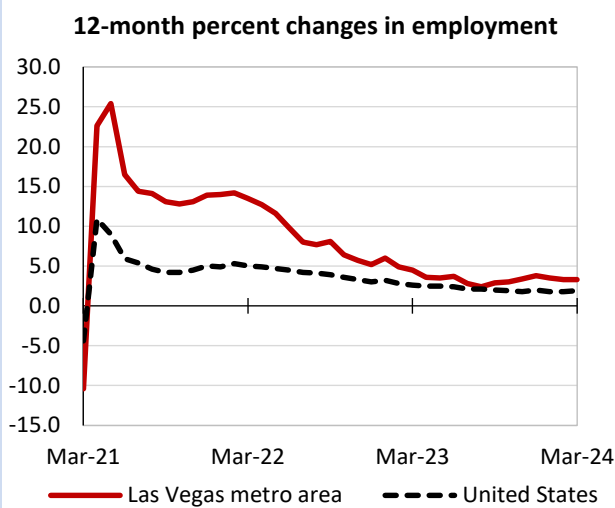
Las Vegas metro area, third quarter 2023

(U.S. = \$1,334; Area = \$1,159)



Source: U.S. BLS, Quarterly Census of Employment and Wages.

Over-the-year changes in employment on nonfarm payrolls and employment by major industry sector



Source: U.S. BLS, Current Employment Statistics.

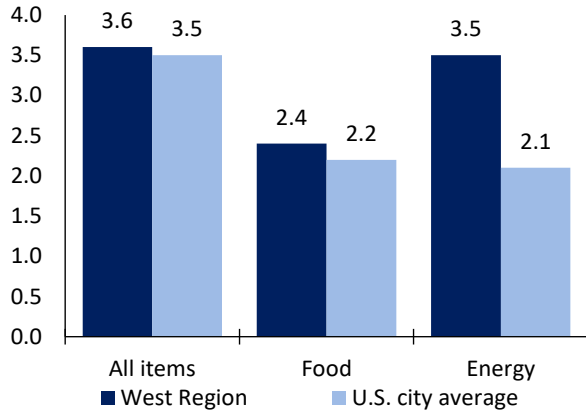
| Las Vegas metro area employment (number in thousands) | Mar. 2024 | Change from Mar. 2023 to Mar. 2024 | |
|---|-----------|------------------------------------|---------|
| | | Number | Percent |
| Total nonfarm | 1,145.9 | 36.8 | 3.3 |
| Mining and logging | 0.4 | 0.0 | 0.0 |
| Construction | 85.3 | 4.6 | 5.7 |
| Manufacturing | 31.3 | 1.1 | 3.6 |
| Trade, transportation, and utilities | 213.0 | 6.7 | 3.2 |
| Information | 14.2 | 0.4 | 2.9 |
| Financial activities | 59.6 | 0.4 | 0.7 |
| Professional and business services | 163.5 | 2.1 | 1.3 |
| Education and health services | 124.5 | 3.4 | 2.8 |
| Leisure and hospitality | 297.3 | 10.8 | 3.8 |
| Other services | 33.8 | 0.6 | 1.8 |
| Government | 123.0 | 6.7 | 5.8 |

Source: U.S. BLS, Current Employment Statistics.



Over-the-year change in the prices paid by urban consumers for selected categories

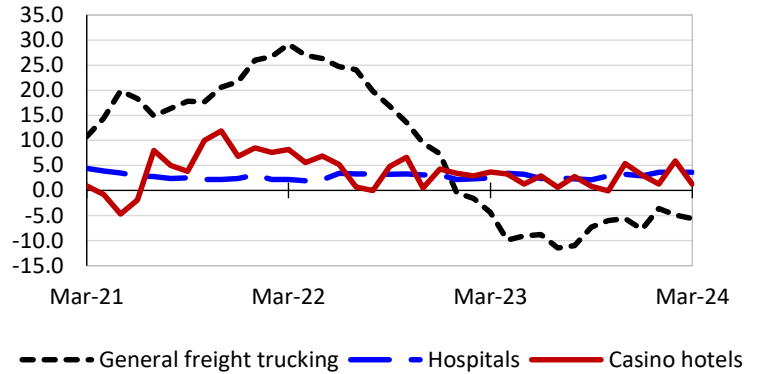
12-month percent change in CPI-U, March 2024



Source: U.S. BLS, Consumer Price Index.

Over-the-year changes in the selling prices received by producers for selected industries nationwide

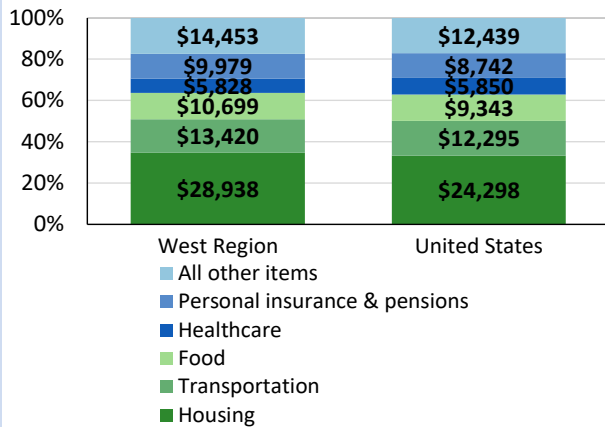
12-month percent changes in PPI



Source: U.S. BLS, Producer Price Index.

Average annual spending and percent distribution for selected categories

Average annual expenditures, United States and West Region, 2022



Source: U.S. BLS, Consumer Expenditure Survey.

Average hourly wages for selected occupations

| Occupation | Las Vegas metro area | United States |
|--------------------------|----------------------|---------------|
| All occupations | \$27.82 | \$31.48 |
| Lawyers | 78.73 | 84.84 |
| Human resources managers | 50.68 | 74.39 |
| Electricians | 33.31 | 32.60 |
| Concierges | 19.38 | 19.34 |
| Gambling dealers | 14.61 | 19.25 |
| Cashiers | 13.90 | 14.77 |

Source: U.S. BLS, Occupational Employment and Wage Statistics, May 2023.

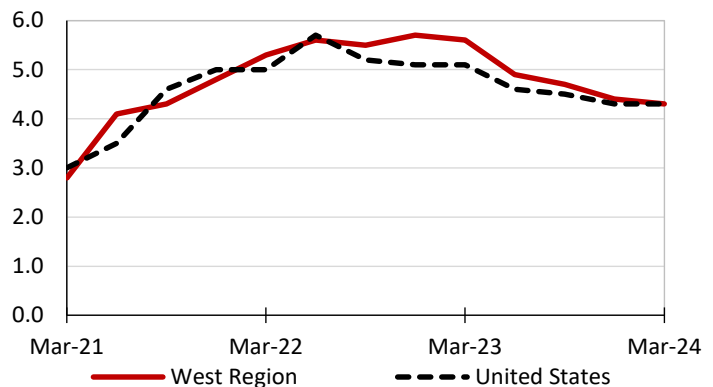
Employer costs per hour worked for wages and selected employee benefits by geographic division

| Private industry, December 2023 | West Region | United States |
|---------------------------------|-------------|---------------|
| Total compensation | \$45.15 | \$43.11 |
| Wages and salaries | 31.95 | 30.33 |
| Total benefits | 13.20 | 12.77 |
| Paid leave | 3.39 | 3.26 |
| Vacation | 1.69 | 1.67 |
| Supplemental pay | 1.68 | 1.71 |
| Insurance | 3.09 | 3.14 |
| Retirement and savings | 1.55 | 1.50 |
| Legally required benefits | 3.49 | 3.17 |

Source: U.S. BLS, Employer Costs for Employee Compensation.

Over-the-year changes in wages and salaries

12-month percent changes in ECI



Source: U.S. BLS, Employment Cost Index.

