

**Transmission of material in this release is embargoed until  
8:30 a.m. (EST) Friday, January 14, 2011**

USDL-11-0018

Technical information: (202) 691-7000 • Reed.Steve@bls.gov • www.bls.gov/cpi  
Media Contact: (202) 691-5902 • PressOffice@bls.gov

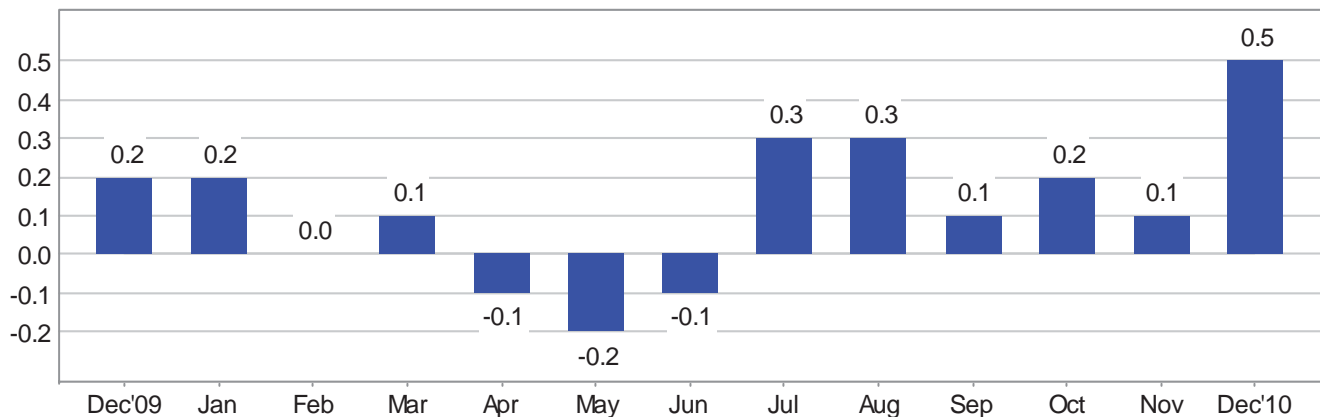
### CONSUMER PRICE INDEX – DECEMBER 2010

The Consumer Price Index for All Urban Consumers (CPI-U) increased 0.5 percent in December on a seasonally adjusted basis, the U.S. Bureau of Labor Statistics reported today. Over the last 12 months, the all items index increased 1.5 percent before seasonal adjustment.

The energy index increased in December. The gasoline index rose sharply and accounted for about 80 percent of the all items seasonally adjusted increase. The household energy index, which declined in November, increased as well. The food index increased slightly in December, with the fruits and vegetables index rising notably.

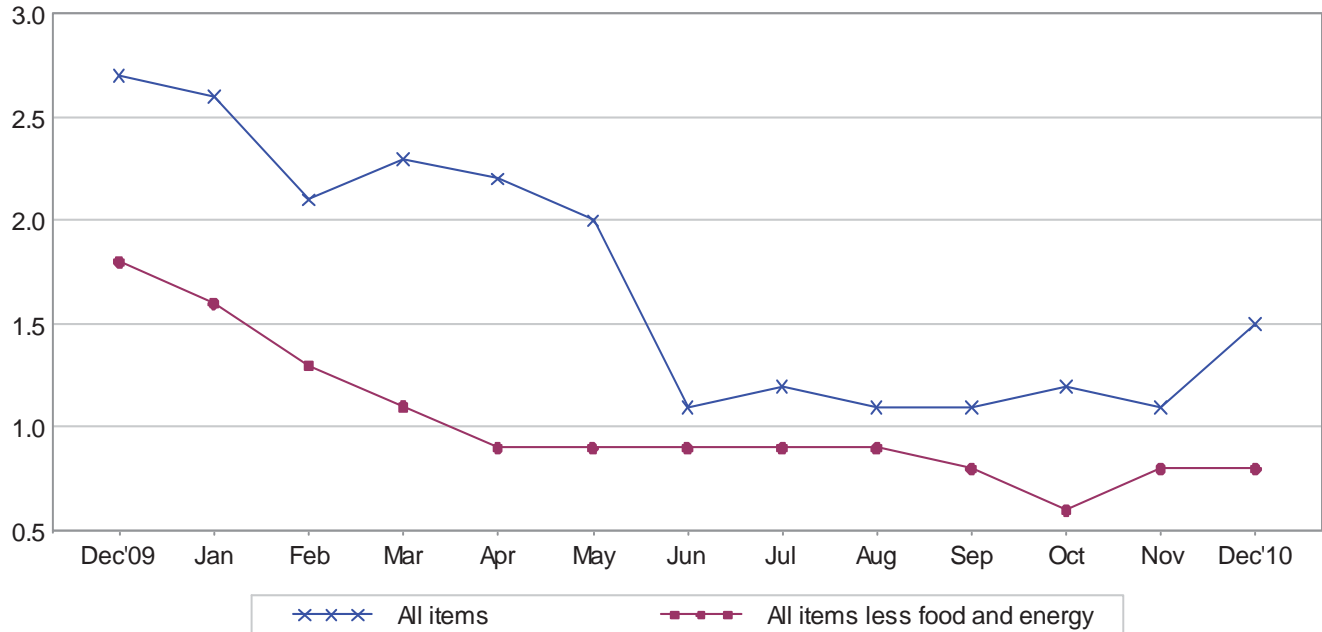
The index for all items less food and energy also rose in December. An increase in the shelter index accounted for about 60 percent of the rise, and the indexes for airline fares, medical care and apparel rose as well. These increases more than offset declines in the indexes for communication, recreation, and household furnishings and operations.

**Chart 1. One-month percent change in CPI for All Urban Consumers (CPI-U), seasonally adjusted, Dec. 2009 - Dec. 2010**  
Percent change



**Chart 2. 12-month percent change in CPI for All Urban Consumers (CPI-U), not seasonally adjusted, Dec. 2009 - Dec. 2010**

Percent change



**Table A. Percent changes in CPI for All Urban Consumers (CPI-U): U.S. city average**

	Seasonally adjusted changes from preceding month							Un-adjusted 12-mos. ended Dec. 2010
	June 2010	July 2010	Aug. 2010	Sep. 2010	Oct. 2010	Nov. 2010	Dec. 2010	
All items .....	-.1	.3	.3	.1	.2	.1	.5	1.5
Food .....	.0	-.1	.2	.3	.1	.2	.1	1.5
Food at home .....	-.1	-.1	.0	.3	.0	.3	.1	1.7
Food away from home <sup>1</sup> .....	.1	.0	.3	.3	.1	.1	.1	1.3
Energy .....	-2.9	2.6	2.3	.7	2.6	.2	4.6	7.7
Energy commodities .....	-4.1	4.0	3.8	1.8	4.4	.8	7.5	13.9
Gasoline (all types) .....	-4.5	4.6	3.9	1.6	4.6	.7	8.5	13.8
Fuel oil <sup>1</sup> .....	-3.2	-1.6	.9	.8	4.7	4.2	4.9	16.5
Energy services .....	-1.6	.8	.4	-.8	.2	-.7	.5	-.1
Electricity .....	-2.2	.5	.2	-.3	.4	.9	.3	.7
Utility (piped) gas service .....	.6	1.7	1.1	-2.3	-.4	-5.7	1.4	-2.8
All items less food and energy .....	.2	.1	.0	.0	.0	.1	.1	.8
Commodities less food and energy .....								
commodities .....	.2	.2	.1	-.2	-.2	-.1	.0	-.4
New vehicles .....	.1	.1	.3	.1	-.2	-.4	.0	-.2
Used cars and trucks .....	.9	.8	.7	-.7	-.9	-.5	-.1	3.7
Apparel .....	.8	.6	-.1	-.6	-.3	.2	.1	-1.1
Medical care commodities <sup>1</sup> .....	.0	-.2	.2	.3	.1	.2	.1	2.9
Services less energy services .....	.1	.1	.0	.1	.1	.2	.1	1.3
Shelter .....	.1	.1	.0	.0	.1	.1	.1	.4
Transportation services .....	.0	.0	.1	.3	.3	.5	.2	2.8
Medical care services .....	.4	.0	.2	.8	.2	.1	.3	3.4

<sup>1</sup> Not seasonally adjusted.

## **Year in Review**

The rate of increase in the CPI slowed in 2010 as the December to December increase fell from 2.7 percent in 2009 to 1.5 percent in 2010. A deceleration in the gasoline index accounted for much of the slowdown, as it increased 13.8 percent in 2010 after rising 53.5 percent in 2009. The index for household energy, which declined in 2009, rose 0.8 percent in 2010 as increases in the indexes for fuel oil and electricity more than offset a decline in the natural gas index. The energy index as a whole, which rose 18.2 percent in 2009, increased 7.7 percent in 2010.

The index for all items less food and energy also decelerated in 2010. After rising 1.8 percent in both 2008 and 2009, the index increased 0.8 percent in 2010, the smallest December-December increase in the history of the index. Several indexes turned down in 2010. These include the new vehicles index, which fell 0.2 percent in 2010 after rising 4.9 percent in 2009, and the index for apparel, which fell 1.1 percent in 2010 after a 1.9 percent increase in 2009. The indexes for recreation and household furnishings and operations, which both declined in 2009, posted larger decreases in 2010. The indexes for tobacco and for used cars and trucks rose in 2010, but at a slower rate than the previous year. The shelter and medical care indexes posted increases in 2010 similar to their 2009 figures. One of the few indexes to accelerate was the airline fares index, which rose 5.8 percent in 2010 after rising 4.3 percent in 2009.

The food index turned up in 2010, rising 1.5 percent after declining 0.5 percent in 2009. The index for food away from home rose 1.3 percent; the food at home index increased 1.7 percent after declining 2.4 percent in 2009. Among major grocery store food groups, the index for meats, poultry, fish and eggs posted the largest increase at 5.5 percent followed by a 3.7 percent increase in the dairy index. The indexes for nonalcoholic beverages and cereals and bakery products were the only ones to decline.

## **Consumer Price Index Data for December 2010**

### **Food**

The food index rose 0.1 percent in December after a 0.2 percent increase in November. The indexes for food away from home and food at home both rose 0.1 percent. Within the latter group, the fruits and vegetables index rose 1.8 percent after declining in November. The index for fresh fruits rose 3.4 percent, its fourth consecutive monthly increase. The indexes for cereals and bakery products, dairy and related products, and other food at home also increased in December. In contrast, the index for nonalcoholic beverages fell 1.3 percent in December and the index for meats, poultry, fish and eggs fell 0.4 percent.

### **Energy**

The energy index, which rose 0.2 percent in November, increased 4.6 percent in December. The gasoline index rose 8.5 percent in December, the sixth consecutive increase. (Before seasonal adjustment, gasoline prices rose 4.5 percent in December.) The index for household energy also increased in December, rising 0.8 percent after declining 0.4 percent in November. The index for fuel oil increased 4.9 percent, and the indexes for natural gas and electricity rose 1.4 percent and 0.3 percent, respectively.

### **All items less food and energy**

The index for all items less food and energy rose 0.1 percent in December, the same increase as last month. The index for shelter rose 0.1 percent for the third month in a row. The rent index rose 0.2 percent while the index for owners' equivalent rent increased 0.1 percent. The index for lodging away from home turned up in December, rising 1.3 percent after falling 1.2 percent in November. The index for airline fares continued to rise in December, increasing 3.3 percent after a 3.0 percent advance in November. The index for medical care rose 0.2 percent in December. The index for medical care commodities rose 0.1 percent while the index for medical care services increased 0.3 percent with the hospital services index rising 0.8 percent. The index for apparel rose 0.1 percent in December, and the tobacco index increased 0.8 percent after declining in each of the two previous months. The index for new vehicles was unchanged in December after declining in November while the used cars and trucks index fell 0.1 percent, its fourth consecutive decline. Also falling in December were the indexes for recreation (down 0.2 percent), communication (down 0.6 percent), and household furnishings and operations (down 0.1 percent).

### **Not seasonally adjusted CPI measures**

The Consumer Price Index for All Urban Consumers (CPI-U) increased 1.5 percent over the last 12 months to an index level of 219.179 (1982-84=100). For the month, the index increased 0.2 percent prior to seasonal adjustment.

The Consumer Price Index for Urban Wage Earners and Clerical Workers (CPI-W) increased 1.7 percent over the last 12 months to an index level of 215.262 (1982-84=100). For the month, the index rose 0.2 percent prior to seasonal adjustment.

The Chained Consumer Price Index for All Urban Consumers (C-CPI-U) increased 1.4 percent over the last 12 months. For the month, the index increased 0.2 percent on a not seasonally adjusted basis. Please note that the indexes for the post-2008 period are subject to revision.

---

**The Consumer Price Index for January 2011 is scheduled to be released on Thursday, February 17, 2011, at 8:30 a.m. (EST).**

Effective with the release of CPI data for January 2011 scheduled for Thursday, February 17, 2011, the following series will be re-titled:

- Recreation services will become Other recreation services
- Gas (piped) and electricity will become Energy services
- Canned fish and seafood will become Shelf stable fish and seafood

The Recreation services index does not include all services under the major group Recreation, specifically video and audio related services, pet services, and photography and film services are excluded. The new title, Other recreation services, will reflect these exclusions.

Gas (piped) and electricity has been presented as Energy services in Table A of the CPI News Release since August 2009. At that time, the format text of the News Release was updated to focus on Food, Energy, and All items less food and energy instead of the major groups (Food, Housing, Apparel, Transportation, Medical care, Education and communication, Recreation, and Other goods and services). The title will be changed in the remainder of the publication tables in January 2011 to improve consistency.

The title for Canned fish and seafood will change to Shelf stable fish and seafood to better reflect current packaging methods.

## **Facilities for Sensory Impaired**

Information from this release will be made available to sensory impaired individuals upon request.  
Voice phone: 202-691-5200, Federal Relay Services: 1-800-877-8339.

## **Brief Explanation of the CPI**

The Consumer Price Index (CPI) is a measure of the average change in prices over time of goods and services purchased by households. The Bureau of Labor Statistics publishes CPIs for two population groups: (1) the CPI for Urban Wage Earners and Clerical Workers (CPI-W), which covers households of wage earners and clerical workers that comprise approximately 32 percent of the total population and (2) the CPI for All Urban Consumers (CPI-U) and the Chained CPI for All Urban Consumers (C-CPI-U), which cover approximately 87 percent of the total population and include in addition to wage earners and clerical worker households, groups such as professional, managerial, and technical workers, the self-employed, short-term workers, the unemployed, and retirees and others not in the labor force.

The CPIs are based on prices of food, clothing, shelter, and fuels, transportation fares, charges for doctors' and dentists' services, drugs, and other goods and services that people buy for day-to-day living. Prices are collected each month in 87 urban areas across the country from about 4,000 housing units and approximately 25,000 retail establishments-department stores, supermarkets, hospitals, filling stations, and other types of stores and service establishments. All taxes directly associated with the purchase and use of items are included in the index. Prices of fuels and a few other items are obtained every month in all 87 locations. Prices of most other commodities and services are collected every month in the three largest geographic areas and every other month in other areas. Prices of most goods and services are obtained by personal visits or telephone calls of the Bureau's trained representatives.

In calculating the index, price changes for the various items in each location are averaged together with weights, which represent their importance in the spending of the appropriate population group. Local data are then combined to obtain a U.S. city average. For the CPI-U and CPI-W separate indexes are also published by size of city, by region of the country, for cross-classifications of regions and population-size classes, and for 27 local areas. Area indexes do not measure differences in the level of prices among cities; they only measure the average change in prices for each area since the base period. For the C-CPI-U data are issued only at the national level. It is important to note that the CPI-U and CPI-W are considered final when released, but the C-CPI-U is issued in preliminary form and subject to two annual revisions.

The index measures price change from a designed reference date. For the CPI-U and the CPI-W the reference base is 1982-84 equals 100.0. The reference base for the C-CPI-U is December 1999 equals 100. An increase of 16.5 percent from the reference base, for example, is shown as 116.5. This change can also be expressed in dollars as follows: the price of a base period market basket of goods and services in the CPI has risen from \$10 in 1982-84 to \$11.65.

For further details visit the CPI home page on the Internet at <http://www.bls.gov/cpi/> or contact our CPI Information and Analysis Section on (202) 691-7000.

## Note on Sampling Error in the Consumer Price Index

The CPI is a statistical estimate that is subject to sampling error because it is based upon a sample of retail prices and not the complete universe of all prices. BLS calculates and publishes estimates of the 1-month, 2-month, 6-month and 12-month percent change standard errors annually, for the CPI-U. These standard error estimates can be used to construct confidence intervals for hypothesis testing. For example, the estimated standard error of the 1 month percent change is 0.04 percent for the U.S. All Items Consumer Price Index. This means that if we repeatedly sample from the universe of all retail prices using the same methodology, and estimate a percentage change for each sample, then 95% of these estimates would be within 0.08 percent of the 1 month percentage change based on all retail prices. For example, for a 1-month change of 0.2 percent in the All Items CPI for All Urban Consumers, we are 95 percent confident that the actual percent change based on all retail prices would fall between 0.12 and 0.28 percent. For the latest data, including information on how to use the estimates of standard error, see “Variance Estimates for Price Changes in the Consumer Price Index, January-December 2009”. These data are available on the CPI home page (<http://www.bls.gov/cpi>), or by using the following link <http://www.bls.gov/cpi/cpivar2009.pdf>

## Calculating Index Changes

Movements of the indexes from one month to another are usually expressed as percent changes rather than changes in index points, because index point changes are affected by the level of the index in relation to its base period while percent changes are not. The example below illustrates the computation of index point and percent changes.

Percent changes for 3-month and 6-month periods are expressed as annual rates and are computed according to the standard formula for compound growth rates. These data indicate what the percent change would be if the current rate were maintained for a 12-month period.

### Index Point Change

CPI	202.416
Less previous index	201.800
Equals index point change	.616

### Percent Change

Index point difference	.616
Divided by the previous index	201.800
Equals	0.003
Results multiplied by one hundred	0.003x100
Equals percent change	0.3

## Regions Defined

The states in the four regions shown in Tables 3 and 6 are listed below.

The Northeast--Connecticut, Maine, Massachusetts, New Hampshire, New York, New Jersey, Pennsylvania, Rhode Island, and Vermont.

The Midwest--Illinois, Indiana, Iowa, Kansas, Michigan, Minnesota, Missouri, Nebraska, North Dakota, Ohio, South Dakota, and Wisconsin.

The South--Alabama, Arkansas, Delaware, Florida, Georgia, Kentucky, Louisiana, Maryland, Mississippi, North Carolina, Oklahoma, South Carolina, Tennessee, Texas, Virginia, West Virginia, and the District of Columbia.

The West--Alaska, Arizona, California, Colorado, Hawaii, Idaho, Montana, Nevada, New Mexico, Oregon, Utah, Washington, and Wyoming.

## A Note on Seasonally Adjusted and Unadjusted Data

Because price data are used for different purposes by different groups, the Bureau of Labor Statistics publishes seasonally adjusted as well as unadjusted changes each month.

For analyzing general price trends in the economy, seasonally adjusted changes are usually preferred since they eliminate the effect of changes that normally occur at the same time and in about the same magnitude every year--such as price movements resulting from changing climatic conditions, production cycles, model changeovers, holidays, and sales.

The unadjusted data are of primary interest to consumers concerned about the prices they actually pay. Unadjusted data also are used extensively for escalation purposes. Many collective bargaining contract agreements and pension plans, for example, tie compensation changes to the Consumer Price Index before adjustment for seasonal variation.

Seasonal factors used in computing the seasonally adjusted indexes are derived by the X-12-ARIMA Seasonal Adjustment Method. Seasonally adjusted indexes and seasonal factors are computed annually. Each year, the last 5 years of seasonally adjusted data are revised. Data from January 2005 through December 2009 were replaced in January 2010. Exceptions to the usual revision schedule were: the updated seasonal data at the end of 1977 replaced data from 1967 through 1977; and, in January 2002, dependently seasonally adjusted series were revised for January 1987-December 2001 as a result of a change in the aggregation weights for dependently adjusted series. For further information, please see "Aggregation of Dependently Adjusted Seasonally Adjusted Series," in the October 2001 issue of the CPI Detailed Report.

The seasonal movement of all items and 54 other aggregations is derived by combining the seasonal movement of 73 selected components. Each year the seasonal status of every series is reevaluated based upon certain statistical criteria. If any of the 73 components change their seasonal adjustment status from seasonally adjusted to not seasonally adjusted, not seasonally adjusted data will be used in the aggregation of the dependent series for the last 5 years, but the seasonally adjusted indexes will be used before that period. Note: 46 of the 73 components are seasonally adjusted for 2010.

Seasonally adjusted data, including the all items index levels, are subject to revision for up to five years after their original release. For this reason, BLS advises against the use of these data in escalation agreements.



Effective with the calculation of the seasonal factors for 1990, the Bureau of Labor Statistics has used an enhanced seasonal adjustment procedure called Intervention Analysis Seasonal Adjustment for some CPI series. Intervention Analysis Seasonal Adjustment allows for better estimates of seasonally adjusted data. Extreme values and/or sharp movements which might distort the seasonal pattern are estimated and removed from the data prior to calculation of seasonal factors. Beginning with the calculation of seasonal factors for 1996, X-12-ARIMA software was used for Intervention Analysis Seasonal Adjustment.

For the seasonal factors introduced in January 2010, BLS adjusted 30 series using Intervention Analysis Seasonal Adjustment, including selected food and beverage items, motor fuels, electricity and vehicles. For example, this procedure was used for the Motor fuel series to offset the effects of events such as damage to oil refineries from Hurricane Katrina.

For a complete list of Intervention Analysis Seasonal Adjustment series and explanations, please refer to the article "Intervention Analysis Seasonal Adjustment", located on our website at <http://www.bls.gov/cpi/cpisapage.htm>.

For additional information on seasonal adjustment in the CPI, please write to the Bureau of Labor Statistics, Division of Consumer Prices and Price Indexes, Washington, DC 20212 or contact David Levin at (202) 691-6968, or by e-mail at [Levin.David@bls.gov](mailto:Levin.David@bls.gov). If you have general questions about the CPI, please call our information staff at (202) 691-7000.

## **Recalculated Seasonally Adjusted Indexes to be Available on February 15, 2011**

Each year with the release of the January CPI, seasonal adjustment factors are recalculated to reflect price movements from the just-completed calendar year. This routine annual recalculation may result in revisions to seasonally adjusted indexes for the previous 5 years. BLS will make available recalculated seasonally adjusted indexes, as well as recalculated seasonal adjustment factors, for the period January 2006 through December 2010, on Tuesday, February 15, 2011. This date is two working days before the scheduled release of the January 2011 CPI on Thursday, February 17, 2011.

The revised indexes and seasonal factors will be available on the internet. The address is <http://www.bls.gov/cpi/cpisapage.htm>. Look under Seasonal Adjustment in the CPI and select Revised Seasonally Adjusted Indexes and Factors, 2006-2010.

For further information please contact David Levin by electronic mail at: [Levin.David@bls.gov](mailto:Levin.David@bls.gov) or by telephone at: (202) 691-5261.

**Table 1. Consumer Price Index for All Urban Consumers (CPI-U): U.S. city average, by expenditure category and commodity and service group**

(1982-84=100, unless otherwise noted)

CPI-U Expenditure category	Relative importance, December 2009	Unadjusted indexes		Unadjusted percent change to Dec. 2010 from—		Seasonally adjusted percent change from—		
		Nov. 2010	Dec. 2010	Dec. 2009	Nov. 2010	Sep. to Oct.	Oct. to Nov.	Nov. to Dec.
All items .....	100.000	218.803	219.179	1.5	0.2	0.2	0.1	0.5
All items (1967=100) .....	-	655.438	656.563	-	-	-	-	-
Food and beverages .....	14.795	220.991	221.278	1.5	.1	.1	.2	.1
Food .....	13.738	220.617	220.946	1.5	.1	.1	.2	.1
Food at home .....	7.801	216.538	216.955	1.7	.2	.0	.3	.1
Cereals and bakery products .....	1.108	249.944	250.592	-2	.3	-2	.4	.5
Meats, poultry, fish, and eggs .....	1.745	212.957	212.019	5.5	-4	.6	.5	-4
Dairy and related products <sup>1</sup> .....	.820	201.277	202.056	3.7	.4	1.1	.0	.4
Fruits and vegetables .....	1.153	269.917	277.089	1.4	2.7	-7	-2	1.8
Nonalcoholic beverages and beverage materials .....	.952	161.427	159.229	-1.2	-1.4	-5	.8	-1.3
Other food at home .....	2.023	190.152	190.147	.1	.0	-2	.1	.1
Sugar and sweets .....	.295	200.586	203.098	2.2	1.3	.7	-1.4	1.3
Fats and oils .....	.232	202.375	200.476	1.6	-9	.5	.8	-8
Other foods .....	1.496	202.988	202.776	-5	-1	-4	.3	.0
Other miscellaneous foods <sup>1 2</sup> .....	.439	120.623	122.419	.0	1.5	-3	-9	1.5
Food away from home <sup>1</sup> .....	5.937	227.512	227.722	1.3	.1	.1	.1	.1
Other food away from home <sup>1 2</sup> .....	.326	160.392	160.681	2.4	.2	.0	.2	.2
Alcoholic beverages .....	1.056	224.490	224.215	1.0	-1	.2	.0	.1
Housing .....	41.960	215.830	216.142	.3	.1	.1	.0	.2
Shelter .....	32.289	248.738	248.972	.4	.1	.1	.1	.1
Rent of primary residence <sup>3</sup> .....	5.966	250.317	250.986	.8	.3	.1	.2	.2
Lodging away from home <sup>2</sup> .....	.769	126.704	125.665	2.5	-8	-1.0	-1.2	1.3
Owners' equivalent rent of residences <sup>3 4</sup> .....	25.206	257.202	257.452	.3	.1	.1	.1	.1
Owners' equivalent rent of primary residence <sup>3 4</sup> .....	23.593	257.194	257.444	.3	.1	.1	.1	.1
Tenants' and household insurance <sup>1 2</sup> .....	.347	127.501	126.194	1.9	-1.0	.4	.3	-1.0
Fuels and utilities .....	5.081	210.978	212.505	1.8	.7	.4	-2	.7
Household energy .....	4.028	184.764	186.338	.8	.9	.4	-4	.8
Fuel oil and other fuels <sup>1</sup> .....	.276	286.367	298.037	13.5	4.1	4.0	3.5	4.1
Gas (piped) and electricity <sup>3 5</sup> .....	3.752	187.335	188.443	-1	.6	.2	-7	.5
Water and sewer and trash collection services <sup>2</sup> .....	1.052	174.094	174.543	5.7	.3	.4	.3	.5
Household furnishings and operations .....	4.590	124.121	123.931	-2.5	-2	.0	-2	-1
Household operations <sup>1 2</sup> .....	.781	150.180	150.648	.3	.3	-1	.0	.3
Apparel .....	3.695	121.498	118.071	-1.1	-2.8	-3	.2	.1
Men's and boys' apparel .....	.903	112.824	109.711	-8	-2.8	-3	-4	-4
Women's and girls' apparel .....	1.580	109.778	105.739	-2.4	-3.7	-4	.5	.0
Infants' and toddlers' apparel .....	.196	115.106	112.558	-1	-2.2	-1.9	.7	.7
Footwear .....	.721	129.368	126.585	-1.5	-2.2	.2	-8	-3
Transportation .....	16.685	195.659	198.280	5.3	1.3	1.2	.3	2.3
Private transportation .....	15.497	190.915	193.545	5.3	1.4	1.3	.1	2.4
New and used motor vehicles <sup>2</sup> .....	6.386	96.936	97.046	.6	.1	-4	-3	.0
New vehicles .....	3.573	138.222	138.567	-2	.2	-2	-4	.0
Used cars and trucks .....	2.012	142.250	142.454	3.7	.1	-9	-5	-1
Motor fuel .....	4.525	245.165	256.025	13.9	4.4	4.4	.7	7.7
Gasoline (all types) .....	4.337	244.345	255.319	13.8	4.5	4.6	.7	8.5
Motor vehicle parts and equipment <sup>1</sup> .....	.401	138.768	139.223	3.3	.3	.4	.3	.3
Motor vehicle maintenance and repair <sup>1</sup> .....	1.167	249.872	250.134	1.9	.1	.2	.0	.1
Public transportation .....	1.187	254.995	257.172	4.9	.9	.2	2.1	1.7
Medical care .....	6.513	391.660	391.946	3.3	.1	.1	.1	.2
Medical care commodities <sup>1</sup> .....	1.611	316.794	317.199	2.9	.1	.1	.2	.1
Medical care services .....	4.902	414.850	415.079	3.4	.1	.2	.1	.3
Professional services .....	2.796	330.508	330.651	2.7	.0	.0	.3	.1

See footnotes at end of table.

**Table 1. Consumer Price Index for All Urban Consumers (CPI-U): U.S. city average, by expenditure category and commodity and service group-Continued**

(1982-84=100, unless otherwise noted)

CPI-U	Relative importance, December 2009	Unadjusted indexes		Unadjusted percent change to Dec. 2010 from—		Seasonally adjusted percent change from—		
		Nov. 2010	Dec. 2010	Dec. 2009	Nov. 2010	Sep. to Oct.	Oct. to Nov.	Nov. to Dec.
<b>Expenditure category</b>								
Hospital and related services <sup>3</sup>	1.619	619.747	621.176	6.7	0.2	0.5	-0.2	0.8
Recreation <sup>2</sup>	6.437	112.839	112.345	-0.8	-0.4	-1.1	0.0	-0.2
Video and audio <sup>2</sup>	1.894	98.214	97.167	-2.7	-1.1	-1.1	0.0	-0.7
Education and communication <sup>2</sup>	6.434	130.894	130.548	1.3	-0.3	-1.1	0.1	-0.1
Education <sup>2</sup>	3.035	203.139	203.343	3.9	0.1	0.0	0.4	0.5
Educational books and supplies	.200	510.185	513.904	3.5	0.7	0.5	0.4	0.9
Tuition, other school fees, and childcare	2.835	584.509	584.840	4.0	0.1	0.0	0.4	0.4
Communication <sup>2</sup>	3.399	84.423	83.913	-1.1	-0.6	-0.2	-0.1	-0.6
Information and information processing <sup>1 2</sup>	3.225	81.250	80.730	-1.2	-0.6	-0.2	-0.1	-0.6
Telephone services <sup>1 2</sup>	2.392	102.329	101.739	-0.9	-0.6	-0.2	-0.1	-0.6
Information technology, hardware and services <sup>1 6</sup>	.833	9.309	9.232	-2.0	-0.8	-0.2	-0.2	-0.8
Personal computers and peripheral equipment <sup>7</sup>	.246	74.969	73.559	-5.6	-1.9	-0.5	-0.4	-2.3
Other goods and services	3.483	383.633	384.502	1.9	0.2	-0.3	0.3	0.2
Tobacco and smoking products <sup>1</sup>	.871	820.854	827.680	5.6	0.8	-0.3	-0.1	0.8
Personal care	2.612	207.162	207.196	0.7	0.0	-0.3	0.5	0.0
Personal care products <sup>1</sup>	.688	160.401	160.656	-1.0	0.2	-0.6	0.3	0.2
Personal care services <sup>1</sup>	.642	229.623	230.159	0.8	0.2	-0.4	0.1	0.2
Miscellaneous personal services	1.048	357.061	356.475	2.2	-0.2	0.2	0.4	0.0
<b>Commodity and service group</b>								
Commodities	39.816	175.415	176.015	2.0	0.3	0.5	0.1	1.0
Food and beverages	14.795	220.991	221.278	1.5	0.1	0.1	0.2	0.1
Commodities less food and beverages	25.021	151.148	151.854	2.3	0.5	0.7	0.1	1.5
Nondurables less food and beverages	15.044	192.320	193.856	4.4	0.8	1.1	0.7	2.7
Apparel	3.695	121.498	118.071	-1.1	-2.8	-0.3	0.2	0.1
Nondurables less food, beverages, and apparel	11.349	240.762	245.458	6.2	2.0	1.5	0.6	3.4
Durables	9.978	110.573	110.512	-0.9	-0.1	-0.4	-0.4	0.0
Services	60.184	261.921	262.074	1.2	0.1	0.1	0.1	0.2
Rent of shelter <sup>4</sup>	31.942	259.142	259.418	0.4	0.1	0.1	0.4	0.3
Tenants' and household insurance <sup>1 2</sup>	.347	127.501	126.194	1.9	-1.0	-0.4	0.3	-1.0
Gas (piped) and electricity <sup>3 5</sup>	3.752	187.335	188.443	-0.1	0.6	0.2	-0.7	0.5
Water and sewer and trash collection services <sup>2</sup>	1.052	174.094	174.543	5.7	0.3	0.4	0.3	0.5
Household operations <sup>1 2</sup>	.781	150.180	150.648	0.3	0.3	-0.1	0.0	0.3
Transportation services	6.060	263.265	263.264	2.8	0.0	0.3	0.5	0.2
Medical care services	4.902	414.850	415.079	3.4	0.1	0.2	0.1	0.3
Other services	11.347	311.499	310.824	1.4	-0.2	0.0	0.2	0.0
<b>Special indexes</b>								
All items less food	86.262	218.538	218.921	1.5	0.2	0.3	0.1	0.6
All items less shelter	67.711	209.560	209.996	2.0	0.2	0.3	0.1	0.7
All items less medical care	93.487	210.336	210.712	1.4	0.2	0.2	0.1	0.5
Commodities less food	26.078	153.761	154.443	2.2	0.4	0.7	0.1	1.5
Nondurables less food	16.100	194.266	195.703	4.2	0.7	0.8	0.7	2.4
Nondurables less food and apparel	12.405	238.165	242.401	5.7	1.8	1.2	0.7	3.1
Nondurables	29.838	207.053	208.028	3.0	0.5	0.8	0.4	1.3
Services less rent of shelter <sup>4</sup>	28.243	285.467	285.481	2.0	0.0	0.2	0.1	0.3
Services less medical care services	55.282	250.044	250.191	1.0	0.1	0.1	0.3	0.3
Energy	8.553	211.970	217.953	7.7	2.8	2.6	0.2	4.6
All items less energy	91.447	221.235	221.045	0.9	-0.1	0.0	0.1	0.1
All items less food and energy	77.708	222.077	221.795	0.8	-0.1	0.0	0.1	0.1
Commodities less food and energy commodities	21.276	143.594	142.830	-0.4	-0.5	-0.2	-0.1	0.0
Energy commodities	4.801	248.928	259.903	13.9	4.4	4.4	0.8	7.5
Services less energy services	56.432	269.509	269.572	1.3	0.0	0.1	0.2	0.1
Purchasing power of the consumer dollar (1982-84=\$1.00)	-	\$ .457	\$ .456	-	-	-	-	-
Purchasing power of the consumer dollar (1967=\$1.00)	-	\$ .153	\$ .152	-	-	-	-	-

<sup>1</sup> Not seasonally adjusted.

<sup>2</sup> Indexes on a December 1997=100 base.

<sup>3</sup> This index series was calculated using a Laspeyres estimator. All other item stratum index series were calculated using a geometric means estimator.

<sup>4</sup> Indexes on a December 1982=100 base.

<sup>5</sup> In January, 2011, this series will be re-titled Energy services.

<sup>6</sup> Indexes on a December 1988=100 base.

<sup>7</sup> Indexes on a December 2007=100 base.

- Data not available.

NOTE: Index applies to a month as a whole, not to any specific date.

**Table 2. Consumer Price Index for All Urban Consumers (CPI-U): Seasonally adjusted U.S. city average, by expenditure category and commodity and service group**

(1982-84=100, unless otherwise noted)

CPI-U	Seasonally adjusted indexes				Seasonally adjusted annual rate percent change for					
					3 months ended—			6 months ended—		
	Sep. 2010	Oct. 2010	Nov. 2010	Dec. 2010	Mar. 2010	June 2010	Sep. 2010	Dec. 2010	June 2010	Dec. 2010
<b>Expenditure category</b>										
All items .....	218.372	218.879	219.146	220.252	0.9	-1.5	2.7	3.5	-0.3	3.1
Food and beverages .....	220.644	220.808	221.216	221.482	2.0	.7	1.7	1.5	1.3	1.6
Food .....	220.262	220.408	220.841	221.112	2.3	.6	1.6	1.6	1.4	1.6
Food at home .....	216.241	216.339	216.924	217.241	3.7	.0	1.2	1.9	1.8	1.5
Cereals and bakery products .....	250.651	250.168	251.147	252.377	-2.8	-2.8	2.3	2.8	-2.8	2.6
Meats, poultry, fish, and eggs .....	210.311	211.630	212.686	211.832	4.1	12.0	3.2	2.9	8.0	3.1
Dairy and related products <sup>1</sup> .....	199.042	201.291	201.277	202.056	8.5	-1.7	2.2	6.2	3.3	4.2
Fruits and vegetables .....	270.585	268.779	268.320	273.170	19.7	-9.9	-5.7	3.9	3.8	-1.0
Nonalcoholic beverages and beverage materials .....	161.667	160.937	162.234	160.203	-7	-2.6	2.1	-3.6	-1.7	-8
Other food at home .....	191.482	191.175	191.387	191.556	-1.0	-5	1.8	.2	-7	1.0
Sugar and sweets .....	202.826	204.188	201.329	203.928	-1	.3	6.6	2.2	.1	4.4
Fats and oils .....	201.256	202.234	203.821	202.113	-1.3	2.9	2.9	1.7	.8	2.3
Other foods .....	204.645	203.766	204.398	204.391	-1.2	-1.1	.7	-5	-1.2	.1
Other miscellaneous foods <sup>1 2</sup> .....	122.106	121.698	120.623	122.419	-3	-2.5	1.8	1.0	-1.4	1.4
Food away from home <sup>1</sup> .....	227.075	227.287	227.512	227.722	.4	1.4	2.3	1.1	.9	1.7
Other food away from home <sup>1 2</sup> .....	160.072	160.036	160.392	160.681	4.3	1.6	2.0	1.5	2.9	1.8
Alcoholic beverages .....	224.249	224.665	224.724	224.932	-1.5	1.2	3.0	1.2	-2	2.1
Housing .....	216.157	216.351	216.425	216.828	-1.1	-6	.4	1.2	-9	.8
Shelter .....	248.590	248.725	248.990	249.325	-2.2	.9	.4	1.2	-7	.8
Rent of primary residence <sup>3</sup> .....	249.535	249.675	250.217	250.772	.3	.4	.5	2.0	.3	1.3
Lodging away from home <sup>2</sup> .....	135.371	134.035	132.465	134.131	-6.7	23.1	-5.1	-3.6	7.2	-4.3
Owners' equivalent rent of residences <sup>3 4</sup> .....	256.667	256.884	257.192	257.432	-8	.3	.5	1.2	-3	.8
Owners' equivalent rent of primary residence <sup>3 4</sup> .....	256.661	256.878	257.184	257.423	-8	.3	.5	1.2	-3	.8
Tenants' and household insurance <sup>1 2</sup> .....	126.627	127.111	127.501	126.194	2.0	2.8	4.3	-1.4	2.4	1.4
Fuels and utilities .....	213.483	214.378	213.899	215.440	8.8	-7.1	2.4	3.7	.5	3.1
Household energy .....	187.999	188.822	188.156	189.638	8.9	-10.1	1.9	3.5	-1.0	2.7
Fuel oil and other fuels <sup>1</sup> .....	265.812	276.551	286.367	298.037	22.0	-14.4	.4	58.0	2.2	26.0
Gas (piped) and electricity <sup>3 5</sup> .....	191.969	192.302	191.052	192.059	8.0	-9.8	2.0	.2	-1.3	1.1
Water and sewer and trash collection services <sup>2</sup> .....	172.598	173.204	173.652	174.471	8.5	5.3	4.5	4.4	6.9	4.4
Household furnishings and operations .....	124.729	124.685	124.453	124.378	-3.7	-3.7	-1.5	-1.1	-3.7	-1.3
Household operations <sup>1 2</sup> .....	150.346	150.151	150.180	150.648	-5	1.5	-6	.8	.5	.1
Apparel .....	119.444	119.028	119.248	119.344	-4.5	1.3	-.9	-.3	-1.6	-.6
Men's and boys' apparel .....	112.412	112.077	111.579	111.174	-3.9	9.0	-3.5	-4.3	2.4	-3.9
Women's and girls' apparel .....	106.293	105.915	106.487	106.507	-5.0	-3.9	-1.2	.8	-4.5	-.2
Infants' and toddlers' apparel .....	114.148	111.956	112.760	113.529	1.3	2.5	-2.0	-2.2	1.9	-2.1
Footwear .....	128.327	128.548	127.489	127.064	-5.0	2.6	.5	-3.9	-1.3	-1.7
Transportation .....	193.961	196.318	196.833	201.406	4.6	-10.1	13.0	16.3	-3.0	14.6
Private transportation .....	189.331	191.780	192.011	196.566	5.4	-11.5	14.2	16.2	-3.4	15.2
New and used motor vehicles <sup>2</sup> .....	97.739	97.303	96.966	96.950	3.1	1.3	1.8	-3.2	2.2	-.7
New vehicles .....	138.704	138.417	137.924	137.926	-1.2	.4	2.2	-2.2	-.4	.0
Used cars and trucks .....	145.139	143.833	143.137	142.989	11.4	6.6	3.3	-5.8	8.9	-1.3
Motor fuel .....	238.064	248.648	250.355	269.733	9.5	-37.3	49.0	64.8	-17.2	56.7
Gasoline (all types) .....	236.714	247.512	249.154	270.336	8.6	-38.9	48.8	70.1	-18.5	59.1
Motor vehicle parts and equipment <sup>1</sup> .....	137.802	138.289	138.768	139.223	2.2	3.5	3.3	4.2	2.8	3.7
Motor vehicle maintenance and repair <sup>1</sup> .....	249.231	249.824	249.872	250.134	2.0	1.6	2.6	1.5	1.8	2.0
Public transportation .....	251.529	251.992	257.386	261.731	-5.5	11.2	-1.7	17.2	2.5	7.3
Medical care .....	391.328	391.902	392.323	393.216	5.7	2.3	3.2	1.9	4.0	2.6
Medical care commodities <sup>1</sup> .....	315.804	316.082	316.794	317.199	7.7	1.1	1.2	1.8	4.4	1.5
Medical care services .....	414.806	415.495	415.781	416.864	5.0	2.8	3.9	2.0	3.9	2.9
Professional services .....	330.705	330.626	331.593	331.902	2.9	2.6	3.9	1.5	2.8	2.7

See footnotes at end of table.

**Table 2. Consumer Price Index for All Urban Consumers (CPI-U): Seasonally adjusted U.S. city average, by expenditure category and commodity and service group-Continued**

(1982-84=100, unless otherwise noted)

CPI-U	Seasonally adjusted indexes				Seasonally adjusted annual rate percent change for					
					3 months ended—			6 months ended—		
	Sep. 2010	Oct. 2010	Nov. 2010	Dec. 2010	Mar. 2010	June 2010	Sep. 2010	Dec. 2010	June 2010	Dec. 2010
<b>Expenditure category</b>										
Hospital and related services <sup>3</sup> .....	617.619	621.010	619.809	624.460	10.6	5.5	6.5	4.5	8.0	5.5
Recreation <sup>2</sup> .....	113.028	112.945	112.985	112.779	-1.0	1.4	-2.3	-.9	.2	-1.6
Video and audio <sup>2</sup> .....	98.746	98.605	98.570	97.866	-3.1	-2	-3.4	-3.5	-1.7	-3.4
Education and communication <sup>2</sup> .....	130.220	130.140	130.316	130.223	3.2	1.7	.4	.0	2.4	.2
Education <sup>2</sup> .....	200.358	200.442	201.278	202.207	5.9	5.2	.9	3.7	5.6	2.3
Educational books and supplies .....	504.653	507.055	509.314	514.069	4.3	6.2	-3.8	7.7	5.2	1.8
Tuition, other school fees, and childcare .....	576.388	576.457	578.848	581.328	6.1	5.1	1.2	3.5	5.6	2.3
Communication <sup>2</sup> .....	84.660	84.527	84.424	83.948	.6	-1.3	.0	-3.3	-.4	-1.7
Information and information processing <sup>1 2</sup> .....	81.497	81.359	81.250	80.730	.2	-1.4	.0	-3.7	-.6	-1.8
Telephone services <sup>1 2</sup> .....	102.633	102.458	102.329	101.739	-1.6	.0	1.3	-3.4	-.8	-1.1
Information technology, hardware and services <sup>1 6</sup> .....	9.339	9.324	9.309	9.232	5.6	-5.3	-3.5	-4.5	.0	-4.0
Personal computers and peripheral equipment <sup>7</sup> .....	76.330	75.917	75.649	73.933	-4.1	-8.2	2.3	-12.0	-6.2	-5.1
Other goods and services .....	383.948	382.701	383.904	384.835	.8	2.4	3.6	.9	1.6	2.2
Tobacco and smoking products <sup>1</sup> .....	823.766	821.529	820.854	827.680	1.8	9.9	9.0	1.9	5.8	5.4
Personal care .....	207.136	206.425	207.359	207.439	.4	-.1	1.7	.6	.2	1.2
Personal care products <sup>1</sup> .....	160.985	159.951	160.401	160.656	.2	-5.6	2.3	-.8	-2.7	.7
Personal care services <sup>1</sup> .....	230.332	229.343	229.623	230.159	.2	3.2	.2	-.3	1.7	-.1
Miscellaneous personal services .....	355.275	356.127	357.566	357.742	2.5	1.1	2.5	2.8	1.8	2.7
<b>Commodity and service group</b>										
Commodities .....	174.665	175.490	175.685	177.447	2.2	-5.2	5.3	6.5	-1.6	5.9
Food and beverages .....	220.644	220.808	221.216	221.482	2.0	.7	1.7	1.5	1.3	1.6
Commodities less food and beverages .....	150.262	151.324	151.427	153.732	2.2	-8.5	7.4	9.6	-3.3	8.5
Nondurables less food and beverages .....	189.461	191.616	192.943	198.143	1.8	-13.6	13.0	19.6	-6.2	16.3
Apparel .....	119.444	119.028	119.248	119.344	-4.5	1.3	-.9	-.3	-1.6	-.6
Nondurables less food, beverages, and apparel .....	237.892	241.403	242.946	251.231	5.5	-19.4	20.3	24.4	-7.8	22.3
Durables .....	111.580	111.174	110.683	110.641	-.6	-.2	.7	-3.3	-.4	-1.3
Services .....	261.781	262.008	262.313	262.734	.3	1.1	.9	1.5	.7	1.2
Rent of shelter <sup>4</sup> .....	259.063	259.238	260.293	261.086	-3.4	-.9	1.2	3.2	-1.3	2.2
Tenants' and household insurance <sup>1 2</sup> .....	126.627	127.111	127.501	126.194	2.0	2.8	4.3	-1.4	2.4	1.4
Gas (piped) and electricity <sup>3 5</sup> .....	191.969	192.302	191.052	192.059	8.0	-9.8	2.0	.2	-1.3	1.1
Water and sewer and trash collection services <sup>2</sup> .....	172.598	173.204	173.652	174.471	8.5	5.3	4.5	4.4	6.9	4.4
Household operations <sup>1 2</sup> .....	150.346	150.151	150.180	150.648	-.5	1.5	-.6	.8	.5	.1
Transportation services .....	260.777	261.655	263.019	263.668	2.1	3.3	1.3	4.5	2.7	2.9
Medical care services .....	414.806	415.495	415.781	416.864	5.0	2.8	3.9	2.0	3.9	2.9
Other services .....	310.495	310.397	311.001	310.951	1.5	3.2	.5	.6	2.4	.5
<b>Special indexes</b>										
All items less food .....	218.095	218.658	218.899	220.137	.7	-1.8	2.9	3.8	-.5	3.3
All items less shelter .....	209.012	209.671	209.943	211.368	2.5	-2.6	3.8	4.6	-.1	4.2
All items less medical care .....	209.905	210.404	210.664	211.768	.6	-1.7	2.7	3.6	-.6	3.1
Commodities less food .....	152.889	153.938	154.040	156.296	2.1	-8.1	7.2	9.2	-3.2	8.2
Nondurables less food .....	191.839	193.327	194.729	199.426	2.7	-13.5	13.5	16.8	-5.7	15.1
Nondurables less food and apparel .....	235.546	238.419	240.153	247.669	4.9	-17.9	18.7	22.2	-7.2	20.4
Nondurables .....	205.209	206.911	207.704	210.310	2.6	-8.5	8.4	10.3	-3.1	9.4
Services less rent of shelter <sup>4</sup> .....	285.138	285.577	285.971	286.783	2.9	1.3	1.4	2.3	2.1	1.9
Services less medical care services .....	249.872	250.121	250.920	251.610	-.9	.9	1.0	2.8	.0	1.9
Energy .....	210.256	215.720	216.190	226.181	9.2	-25.7	24.5	33.9	-9.9	29.1
All items less energy .....	220.930	220.938	221.187	221.402	.2	1.2	.9	.9	.7	.9
All items less food and energy .....	221.781	221.765	221.982	222.187	-.2	1.3	.7	.7	.6	.7
Commodities less food and energy commodities .....	143.727	143.379	143.251	143.215	-.1	-.1	.3	-1.4	-.1	-.6
Energy commodities .....	241.105	251.770	253.894	273.021	10.2	-36.2	45.6	64.4	-16.1	54.7
Services less energy services .....	268.921	269.138	269.589	269.957	-.2	1.9	.9	1.5	.8	1.2

<sup>1</sup> Not seasonally adjusted.

<sup>2</sup> Indexes on a December 1997=100 base.

<sup>3</sup> This index series was calculated using a Laspeyres estimator. All other item stratum index series were calculated using a geometric means estimator.

<sup>4</sup> Indexes on a December 1982=100 base.

<sup>5</sup> In January, 2011, this series will be re-titled Energy services.

<sup>6</sup> Indexes on a December 1988=100 base.

<sup>7</sup> Indexes on a December 2007=100 base.

NOTE: Index applies to a month as a whole, not to any specific date.

**Table 3. Consumer Price Index for All Urban Consumers (CPI-U): Selected areas, all items index**

(1982-84=100, unless otherwise noted)

CPI-U	Pricing schedule 1	All items									
		Indexes				Percent change to Dec.2010 from—			Percent change to Nov.2010 from—		
		Sep. 2010	Oct. 2010	Nov. 2010	Dec. 2010	Dec. 2009	Oct. 2010	Nov. 2010	Nov. 2009	Sep. 2010	Oct. 2010
U.S. city average .....	M	218.439	218.711	218.803	219.179	1.5	0.2	0.2	1.1	0.2	0.0
<b>Region and area size<sup>2</sup></b>											
Northeast urban .....	M	234.027	234.671	235.094	235.141	1.6	.2	.0	1.5	.5	.2
Size A - More than 1,500,000 .....	M	235.995	236.560	236.806	236.828	1.4	.1	.0	1.3	.3	.1
Size B/C - 50,000 to 1,500,000 <sup>3</sup> .....	M	139.229	139.746	140.282	140.351	2.0	.4	.0	1.9	.8	.4
Midwest urban .....	M	208.788	208.689	208.816	209.270	1.8	.3	.2	1.2	.0	.1
Size A - More than 1,500,000 .....	M	209.253	209.182	209.344	209.936	1.7	.4	.3	1.0	.0	.1
Size B/C - 50,000 to 1,500,000 <sup>3</sup> .....	M	134.275	134.074	134.058	134.267	1.9	.1	.2	1.6	-.2	.0
Size D - Nonmetropolitan (less than 50,000) .....	M	205.100	205.565	206.014	206.136	1.7	.3	.1	1.5	.4	.2
South urban .....	M	211.775	212.026	211.996	212.488	1.4	.2	.2	1.1	.1	.0
Size A - More than 1,500,000 .....	M	213.493	213.589	213.424	213.850	1.4	.1	.2	.9	.0	-.1
Size B/C - 50,000 to 1,500,000 <sup>3</sup> .....	M	134.658	134.890	134.892	135.240	1.5	.3	.3	1.2	.2	.0
Size D - Nonmetropolitan (less than 50,000) .....	M	215.172	215.390	215.736	216.189	1.4	.4	.2	1.1	.3	.2
West urban .....	M	221.384	221.708	221.671	222.081	1.3	.2	.2	.9	.1	.0
Size A - More than 1,500,000 .....	M	225.726	226.058	225.847	226.112	1.4	.0	.1	1.1	.1	-.1
Size B/C - 50,000 to 1,500,000 <sup>3</sup> .....	M	133.544	133.745	133.930	134.328	.9	.4	.3	.4	.3	.1
<b>Size classes</b>											
A <sup>4</sup> .....	M	199.617	199.842	199.844	200.123	1.5	.1	.1	1.1	.1	.0
B/C <sup>3</sup> .....	M	134.987	135.174	135.289	135.579	1.5	.3	.2	1.2	.2	.1
D .....	M	211.524	211.831	212.124	212.541	1.6	.3	.2	1.2	.3	.1
<b>Selected local areas<sup>5</sup></b>											
Chicago-Gary-Kenosha, IL-IN-WI .....	M	213.339	213.332	213.066	213.778	1.2	.2	.3	.4	-.1	-.1
Los Angeles-Riverside-Orange County, CA ...	M	226.048	226.794	225.941	226.639	1.3	-.1	.3	.7	.0	-.4
New York-Northern N.J.-Long Island, NY-NJ-CT-PA .....	M	241.485	241.981	241.960	241.874	1.4	.0	.0	1.3	.2	.0
Boston-Brockton-Nashua, MA-NH-ME-CT .....	1	236.474	-	238.103	-	-	-	-	.6	.7	-
Cleveland-Akron, OH .....	1	205.492	-	206.168	-	-	-	-	2.3	.3	-
Dallas-Fort Worth, TX .....	1	201.882	-	201.168	-	-	-	-	-.4	-.4	-
Washington-Baltimore, DC-MD-VA-WV <sup>6</sup> .....	1	142.738	-	142.915	-	-	-	-	1.6	.1	-
Atlanta, GA .....	2	-	202.913	-	202.519	1.0	-.2	-	-	-	-
Detroit-Ann Arbor-Flint, MI .....	2	-	205.824	-	206.384	1.2	.3	-	-	-	-
Houston-Galveston-Brazoria, TX .....	2	-	195.094	-	194.479	1.9	-.3	-	-	-	-
Miami-Fort Lauderdale, FL .....	2	-	223.631	-	224.907	.9	.6	-	-	-	-
Philadelphia-Wilmington-Atlantic City, PA-NJ-DE-MD .....	2	-	228.543	-	228.017	1.4	-.2	-	-	-	-
San Francisco-Oakland-San Jose, CA .....	2	-	228.107	-	227.658	1.5	-.2	-	-	-	-
Seattle-Tacoma-Bremerton, WA .....	2	-	227.251	-	226.862	.6	-.2	-	-	-	-

<sup>1</sup> Foods, fuels, and several other items priced every month in all areas; most other goods and services priced as indicated:

M - Every month.

1 - January, March, May, July, September, and November.

2 - February, April, June, August, October, and December.

<sup>2</sup> Regions defined as the four Census regions. See technical notes.

<sup>3</sup> Indexes on a December 1996=100 base.

<sup>4</sup> Indexes on a December 1986=100 base.

<sup>5</sup> In addition, the following metropolitan areas are published semiannually and appear in Tables 34 and 39 of the January and July issues of the CPI Detailed Report: Anchorage, AK; Cincinnati-Hamilton, OH-KY-IN; Denver-Boulder-Greeley, CO; Honolulu, HI; Kansas City, MO-KS; Milwaukee-Racine, WI; Minneapolis-St. Paul, MN-WI; Phoenix-Mesa, AZ; Pittsburgh, PA; Portland-Salem, OR-WA; St. Louis, MO-IL; San Diego, CA;

Tampa-St. Petersburg-Clearwater, FL.

<sup>6</sup> Indexes on a November 1996=100 base.

- Data not available.

NOTE: Local area indexes are byproducts of the national CPI program. Each local index has a smaller sample size than the national index and is, therefore, subject to substantially more sampling and other measurement error. As a result, local area indexes show greater volatility than the national index, although their long-term trends are similar. Therefore, the Bureau of Labor Statistics strongly urges users to consider adopting the national average CPI for use in their escalator clauses.

NOTE: Index applies to a month as a whole, not to any specific date.

**Table 4. Consumer Price Index for Urban Wage Earners and Clerical Workers (CPI-W): U.S. city average, by expenditure category and commodity and service group**

(1982-84=100, unless otherwise noted)

CPI-W Expenditure category	Relative importance, December 2009	Unadjusted indexes		Unadjusted percent change to Dec. 2010 from—		Seasonally adjusted percent change from—		
		Nov. 2010	Dec. 2010	Dec. 2009	Nov. 2010	Sep. to Oct.	Oct. to Nov.	Nov. to Dec.
All items .....	100.000	214.750	215.262	1.7	0.2	0.3	0.0	0.6
All items (1967=100) .....	-	639.673	641.200	-	-	-	-	-
Food and beverages .....	16.425	220.245	220.508	1.5	.1	.1	.2	.1
Food .....	15.333	219.768	220.062	1.6	.1	.1	.2	.1
Food at home .....	8.900	215.414	215.748	1.7	.2	.0	.3	.1
Cereals and bakery products .....	1.257	250.648	251.419	-1	.3	-2	.4	.6
Meats, poultry, fish, and eggs .....	2.144	212.693	211.858	5.6	-4	.6	.4	-3
Dairy and related products <sup>1</sup> .....	.898	200.084	200.958	3.8	.4	1.1	.1	.4
Fruits and vegetables .....	1.223	266.802	273.977	1.4	2.7	-7	-2	1.9
Nonalcoholic beverages and beverage materials .....	1.123	160.999	158.654	-1.3	-1.5	-5	1.0	-1.4
Other food at home .....	2.254	189.265	189.176	.0	.0	-2	.2	.0
Sugar and sweets .....	.321	199.542	202.206	2.5	1.3	.6	-1.0	1.4
Fats and oils .....	.259	202.668	200.925	1.4	-9	.5	.8	-7
Other foods .....	1.674	202.901	202.520	-7	-2	-4	.3	-1
Other miscellaneous foods <sup>1 2</sup> .....	.472	120.723	122.267	-4	1.3	-3	-9	1.3
Food away from home <sup>1</sup> .....	6.433	227.634	227.871	1.3	.1	.1	.1	.1
Other food away from home <sup>1 2</sup> .....	.321	161.428	161.657	3.1	.1	.1	.3	.1
Alcoholic beverages .....	1.092	225.771	225.592	1.1	-1	.1	.2	.1
Housing .....	39.753	212.490	212.861	.3	.2	.1	.1	.2
Shelter .....	30.171	242.806	243.120	.5	.1	.1	.1	.1
Rent of primary residence <sup>3</sup> .....	8.476	248.553	249.246	.7	.3	.0	.2	.2
Lodging away from home <sup>2</sup> .....	.432	128.305	127.369	2.5	-7	-7	-9	1.2
Owners' equivalent rent of residences <sup>3 4</sup> .....	20.959	233.047	233.278	.3	.1	.1	.1	.1
Owners' equivalent rent of primary residence <sup>3 4</sup> .....	20.218	233.049	233.278	.3	.1	.1	.1	.1
Tenants' and household insurance <sup>1 2</sup> .....	.303	128.556	127.674	2.6	-7	.3	.3	-7
Fuels and utilities .....	5.632	209.449	210.860	1.7	.7	.3	-3	.6
Household energy .....	4.517	182.634	184.079	.8	.8	.3	-4	.7
Fuel oil and other fuels <sup>1</sup> .....	.271	287.994	299.558	13.0	4.0	4.2	3.4	4.0
Gas (piped) and electricity <sup>3 5</sup> .....	4.246	186.023	187.077	.0	.6	.1	-7	.5
Water and sewer and trash collection services <sup>2</sup> .....	1.114	174.621	175.008	5.5	.2	.2	.4	.4
Household furnishings and operations .....	3.950	120.257	120.007	-2.6	-2	.0	-1	.0
Household operations <sup>1 2</sup> .....	.369	152.778	153.116	.4	.2	-1	.0	.2
Apparel .....	3.788	120.628	117.127	-1.6	-2.9	-3	.0	.0
Men's and boys' apparel .....	.945	112.815	109.849	-9	-2.6	-5	-1	-3
Women's and girls' apparel .....	1.568	109.388	104.988	-2.6	-4.0	-2	.3	-3
Infants' and toddlers' apparel .....	.285	117.900	115.832	.1	-1.8	-1.7	.7	1.1
Footwear .....	.781	128.216	125.691	-2.3	-2.0	.2	-1.0	-2
Transportation .....	18.647	194.884	197.832	5.9	1.5	1.5	-1	2.8
Private transportation .....	17.881	191.524	194.477	5.9	1.5	1.6	-2	2.8
New and used motor vehicles <sup>2</sup> .....	6.952	96.024	96.151	1.1	.1	-5	-3	.0
New vehicles .....	3.385	139.224	139.567	-3	.2	-2	-3	.0
Used cars and trucks .....	2.944	143.176	143.377	3.7	.1	-9	-5	-1
Motor fuel .....	5.774	245.957	257.025	13.9	4.5	4.8	-4	8.3
Gasoline (all types) .....	5.530	245.250	256.443	13.9	4.6	4.6	.7	8.7
Motor vehicle parts and equipment <sup>1</sup> .....	.472	138.654	139.150	3.2	.4	.3	.4	.4
Motor vehicle maintenance and repair <sup>1</sup> .....	1.180	252.610	252.759	2.0	.1	.2	.0	.1
Public transportation .....	.766	252.230	254.312	4.5	.8	.4	1.7	1.9
Medical care .....	5.261	393.277	393.616	3.5	.1	.2	.1	.3
Medical care commodities <sup>1</sup> .....	1.301	308.332	308.823	3.0	.2	.1	.3	.2
Medical care services .....	3.961	418.307	418.568	3.7	.1	.2	.1	.3
Professional services .....	2.195	333.868	334.032	2.9	.0	.0	.3	.1

See footnotes at end of table.

**Table 4. Consumer Price Index for Urban Wage Earners and Clerical Workers (CPI-W): U.S. city average, by expenditure category and commodity and service group-Continued**

(1982-84=100, unless otherwise noted)

CPI-W Expenditure category	Relative importance, December 2009	Unadjusted indexes		Unadjusted percent change to Dec. 2010 from—		Seasonally adjusted percent change from—			
		Nov. 2010	Dec. 2010	Dec. 2009	Nov. 2010	Sep. to Oct.	Oct. to Nov.	Nov. to Dec.	
Hospital and related services <sup>3</sup> .....	1.339	622.116	623.692	7.4	0.3	0.6	-0.1	0.8	
Recreation <sup>2</sup> .....	6.031	109.082	108.561	-1.2	-.5	-.1	-.2	-.2	
Video and audio <sup>2</sup> .....	2.046	98.774	97.753	-2.6	-1.0	-.1	-.1	-.6	
Education and communication <sup>2</sup> .....	6.175	125.526	125.089	.8	-.3	-.1	.1	-.2	
Education <sup>2</sup> .....	2.327	200.228	200.496	4.0	.1	.1	.4	.5	
Educational books and supplies .....	.196	513.546	515.937	3.3	.5	.3	.6	.7	
Tuition, other school fees, and childcare .....	2.131	563.563	564.149	4.1	.1	.1	.4	.5	
Communication <sup>2</sup> .....	3.848	87.040	86.472	-1.2	-.7	-.2	-.1	-.6	
Information and information processing <sup>1 2</sup> .....	3.715	84.846	84.271	-1.3	-.7	-.2	-.2	-.7	
Telephone services <sup>1 2</sup> .....	2.906	101.975	101.327	-1.2	-.6	-.2	-.2	-.6	
Information technology, hardware and services <sup>1 6</sup> .....	.809	9.849	9.767	-1.7	-.8	-.3	-.2	-.8	
Personal computers and peripheral equipment <sup>7</sup> .....	.225	74.615	73.078	-6.1	-2.1	-.8	-.4	-2.6	
Other goods and services .....	3.919	412.383	414.002	2.5	.4	-.3	.2	.4	
Tobacco and smoking products <sup>1</sup> .....	1.397	825.644	832.741	5.5	.9	-.3	-.1	.9	
Personal care .....	2.522	204.830	205.084	.8	.1	-.4	.4	.2	
Personal care products <sup>1</sup> .....	.733	160.801	161.217	-.6	.3	-.6	.4	.3	
Personal care services <sup>1</sup> .....	.577	229.855	230.332	.8	.2	-.4	.1	.2	
Miscellaneous personal services .....	1.019	358.407	358.380	2.4	.0	.2	.4	.3	
<b>Commodity and service group</b>									
Commodities .....	43.589	178.504	179.331	2.4	.5	.6	.0	1.2	
Food and beverages .....	16.425	220.245	220.508	1.5	.1	.1	.2	.1	
Commodities less food and beverages .....	27.164	155.953	156.997	2.9	.7	.9	-.2	1.9	
Nondurables less food and beverages .....	16.703	201.110	203.292	5.0	1.1	1.3	.8	3.1	
Apparel .....	3.788	120.628	117.127	-1.6	-2.9	-.3	.0	.0	
Nondurables less food, beverages, and apparel .....	12.915	255.572	261.243	6.9	2.2	1.9	.5	3.9	
Durables .....	10.461	111.813	111.789	-.3	.0	-.4	-.4	.0	
Services .....	56.411	257.219	257.382	1.1	.1	.1	.1	.1	
Rent of shelter <sup>4</sup> .....	29.868	233.956	234.278	.4	.1	.1	.3	.2	
Tenants' and household insurance <sup>1 2</sup> .....	.303	128.556	127.674	2.6	-.7	-.3	.3	-.7	
Gas (piped) and electricity <sup>3 5</sup> .....	4.246	186.023	187.077	.0	.6	.1	-.7	.5	
Water and sewer and trash collection services <sup>2</sup> .....	1.114	174.621	175.008	5.5	.2	.2	.4	.4	
Household operations <sup>1 2</sup> .....	.369	152.778	153.116	.4	.2	-.1	.0	.2	
Transportation services .....	5.918	263.804	263.648	3.0	-.1	.4	.4	.1	
Medical care services .....	3.961	418.307	418.568	3.7	.1	.2	.1	.3	
Other services .....	10.631	297.313	296.508	1.0	-.3	.0	.1	-.1	
<b>Special indexes</b>									
All items less food .....	84.667	213.675	214.225	1.7	.3	.4	.0	.7	
All items less shelter .....	69.829	206.838	207.428	2.2	.3	.4	.0	.8	
All items less medical care .....	94.739	207.523	208.036	1.6	.2	.3	.0	.7	
Commodities less food .....	28.256	158.328	159.342	2.9	.6	.9	-.2	1.9	
Nondurables less food .....	17.795	202.679	204.737	4.7	1.0	1.2	.8	2.9	
Nondurables less food and apparel .....	14.007	251.899	257.051	6.4	2.0	1.6	.6	3.6	
Nondurables .....	33.128	211.249	212.541	3.3	.6	1.0	.1	1.5	
Services less rent of shelter <sup>4</sup> .....	26.543	251.894	251.847	1.9	.0	.2	.1	.2	
Services less medical care services .....	52.450	245.958	246.115	.9	.1	.1	.2	.2	
Energy .....	10.291	212.622	218.896	8.2	3.0	2.9	-.4	5.1	
All items less energy .....	89.709	215.970	215.786	.9	-.1	.0	.1	.1	
All items less food and energy .....	74.376	215.584	215.303	.8	-.1	.0	.1	.1	
Commodities less food and energy commodities .....	22.211	145.757	145.037	-.1	-.5	-.3	-.1	.0	
Energy commodities .....	6.045	248.880	260.026	13.9	4.5	4.8	-.3	8.1	
Services less energy services .....	52.165	265.001	265.062	1.2	.0	.1	.2	.1	
Purchasing power of the consumer dollar (1982-84=\$1.00) .....	-	\$ .466	\$ .465	-	-	-	-	-	
Purchasing power of the consumer dollar (1967=\$1.00) .....	-	\$ .156	\$ .156	-	-	-	-	-	

<sup>1</sup> Not seasonally adjusted.

<sup>2</sup> Indexes on a December 1997=100 base.

<sup>3</sup> This index series was calculated using a Laspeyres estimator. All other item stratum index series were calculated using a geometric means estimator.

<sup>4</sup> Indexes on a December 1984=100 base

<sup>5</sup> In January, 2011, this series will be re-titled Energy services.

<sup>6</sup> Indexes on a December 1988=100 base.

<sup>7</sup> Indexes on a December 2007=100 base.

- Data not available.

NOTE: Index applies to a month as a whole, not to any specific date.



**Table 5. Consumer Price Index for Urban Wage Earners and Clerical Workers (CPI-W): Seasonally adjusted U.S. city average, by expenditure category and commodity and service group**

(1982-84=100, unless otherwise noted)

CPI-W	Seasonally adjusted indexes				Seasonally adjusted annual rate percent change for					
					3 months ended—				6 months ended—	
	Sep. 2010	Oct. 2010	Nov. 2010	Dec. 2010	Mar. 2010	June 2010	Sep. 2010	Dec. 2010	June 2010	Dec. 2010
<b>Expenditure category</b>										
All items .....	214.345	215.005	215.099	216.456	1.6	-2.4	3.5	4.0	-0.4	3.8
Food and beverages .....	219.852	220.003	220.512	220.760	1.9	.7	1.9	1.7	1.3	1.8
Food .....	219.367	219.514	220.027	220.282	2.2	.6	1.8	1.7	1.4	1.7
Food at home .....	215.042	215.136	215.851	216.119	3.7	.1	1.3	2.0	1.8	1.7
Cereals and bakery products .....	251.234	250.767	251.854	253.276	-2.9	-3.0	2.5	3.3	-2.9	2.9
Meats, poultry, fish, and eggs .....	210.142	211.446	212.372	211.647	4.4	12.1	3.4	2.9	8.2	3.1
Dairy and related products <sup>1</sup> .....	197.812	199.890	200.084	200.958	8.1	-1.4	2.4	6.5	3.2	4.4
Fruits and vegetables .....	267.680	265.939	265.517	270.617	19.8	-11.1	-5.1	4.5	3.2	-5
Nonalcoholic beverages and beverage materials .....	161.087	160.297	161.964	159.635	-1	-3.1	1.7	-3.6	-1.6	-1.0
Other food at home .....	190.495	190.170	190.508	190.594	-1.3	-5	1.5	.2	-.9	.9
Sugar and sweets .....	201.240	202.408	200.410	203.134	.2	.5	5.6	3.8	.4	4.7
Fats and oils .....	201.340	202.318	203.951	202.611	-3.2	3.8	2.6	2.5	.2	2.6
Other foods .....	204.561	203.701	204.329	204.127	-1.3	-1.3	.6	-.8	-1.3	-1
Other miscellaneous foods <sup>1 2</sup> .....	122.164	121.806	120.723	122.267	-.8	-2.3	1.1	.3	-1.6	.7
Food away from home <sup>1</sup> .....	227.188	227.412	227.634	227.871	.2	1.4	2.4	1.2	.8	1.8
Other food away from home <sup>1 2</sup> .....	160.755	160.988	161.428	161.657	5.7	1.5	2.9	2.3	3.6	2.6
Alcoholic beverages .....	225.507	225.707	226.149	226.307	-2.3	1.5	3.7	1.4	-.4	2.6
Housing .....	212.764	212.959	213.083	213.495	-.2	-.8	.4	1.4	-.5	.9
Shelter .....	242.448	242.602	242.941	243.274	-1.2	.7	.4	1.4	-.3	.9
Rent of primary residence <sup>3</sup> .....	247.767	247.885	248.466	249.017	.3	.2	.3	2.0	.3	1.2
Lodging away from home <sup>2</sup> .....	136.197	135.294	134.069	135.647	-4.6	22.4	-7.5	-1.6	8.1	-4.6
Owners' equivalent rent of residences <sup>3 4</sup> .....	232.567	232.759	233.045	233.259	-.9	.4	.5	1.2	-.3	.9
Owners' equivalent rent of primary residence <sup>3 4</sup> .....	232.568	232.762	233.047	233.259	-.9	.4	.5	1.2	-.3	.8
Tenants' and household insurance <sup>1 2</sup> .....	127.718	128.130	128.556	127.674	3.1	3.1	4.4	-.1	3.1	2.1
Fuels and utilities .....	212.484	213.115	212.541	213.882	8.4	-6.4	2.8	2.7	.7	2.7
Household energy .....	186.387	186.978	186.171	187.442	8.4	-9.1	2.5	2.3	-.8	2.4
Fuel oil and other fuels <sup>1</sup> .....	267.283	278.516	287.994	299.558	23.3	-15.7	-.6	57.8	1.9	25.2
Gas (piped) and electricity <sup>3 5</sup> .....	191.045	191.184	189.877	190.741	7.5	-8.6	2.7	-.6	-.9	1.0
Water and sewer and trash collection services <sup>2</sup> .....	173.079	173.455	174.105	174.849	9.0	5.0	4.1	4.2	7.0	4.1
Household furnishings and operations .....	120.681	120.687	120.577	120.551	-3.8	-3.8	-2.2	-.4	-3.8	-1.3
Household operations <sup>1 2</sup> .....	152.851	152.729	152.778	153.116	-1.1	3.1	-1.0	.7	1.0	-.2
Apparel .....	118.544	118.175	118.205	118.202	-4.8	1.4	-1.8	-1.1	-1.7	-1.5
Men's and boys' apparel .....	112.281	111.728	111.637	111.265	-5.7	10.3	-3.9	-3.6	2.0	-3.7
Women's and girls' apparel .....	105.776	105.596	105.902	105.566	-4.6	-4.5	-.7	-.8	-4.5	-.7
Infants' and toddlers' apparel .....	116.525	114.553	115.336	116.626	3.7	3.0	-6.5	.3	3.4	-3.1
Footwear .....	127.444	127.691	126.425	126.215	-6.0	2.3	-1.5	-3.8	-1.9	-2.6
Transportation .....	193.376	196.286	196.010	201.414	6.1	-13.0	16.3	17.7	-3.9	17.0
Private transportation .....	190.087	193.039	192.616	197.998	6.6	-13.8	17.1	17.7	-4.1	17.4
New and used motor vehicles <sup>2</sup> .....	96.958	96.498	96.178	96.147	3.8	2.4	1.9	-3.3	3.1	-.7
New vehicles .....	139.661	139.363	138.938	138.964	-1.5	.5	1.8	-2.0	-.5	-1
Used cars and trucks .....	146.033	144.761	144.095	143.968	11.1	6.5	3.5	-5.5	8.8	-1.1
Motor fuel .....	239.792	251.389	250.312	271.110	11.2	-40.2	55.0	63.4	-18.4	59.2
Gasoline (all types) .....	237.478	248.433	250.194	271.950	8.4	-39.4	48.8	72.0	-18.9	59.9
Motor vehicle parts and equipment <sup>1</sup> .....	137.728	138.153	138.654	139.150	2.0	3.4	3.0	4.2	2.7	3.6
Motor vehicle maintenance and repair <sup>1</sup> .....	251.938	252.546	252.610	252.759	2.1	1.6	2.9	1.3	1.9	2.1
Public transportation .....	248.885	249.803	254.162	258.913	-6.2	9.0	-.6	17.1	1.1	7.9
Medical care .....	392.737	393.364	393.839	394.859	6.1	2.6	3.2	2.2	4.3	2.7
Medical care commodities <sup>1</sup> .....	307.322	307.539	308.332	308.823	7.9	1.2	1.2	2.0	4.5	1.6
Medical care services .....	417.992	418.780	419.099	420.321	5.5	3.0	3.9	2.2	4.3	3.1
Professional services .....	334.108	333.960	334.892	335.235	3.1	3.2	3.9	1.4	3.1	2.6

See footnotes at end of table.

**Table 5. Consumer Price Index for Urban Wage Earners and Clerical Workers (CPI-W): Seasonally adjusted U.S. city average, by expenditure category and commodity and service group-Continued**

(1982-84=100, unless otherwise noted)

CPI-W	Seasonally adjusted indexes				Seasonally adjusted annual rate percent change for					
					3 months ended—			6 months ended—		
	Sep. 2010	Oct. 2010	Nov. 2010	Dec. 2010	Mar. 2010	June 2010	Sep. 2010	Dec. 2010	June 2010	Dec. 2010
<b>Expenditure category</b>										
Hospital and related services <sup>3</sup> .....	618.805	622.544	621.699	626.726	12.2	5.5	6.9	5.2	8.8	6.1
Recreation <sup>2</sup> .....	109.532	109.427	109.238	109.001	-7	.6	-2.4	-1.9	.0	-2.2
Video and audio <sup>2</sup> .....	99.299	99.197	99.112	98.468	-2.6	-1.1	-2.7	-3.3	-1.9	-3.0
Education and communication <sup>2</sup> .....	125.137	125.048	125.128	124.875	2.4	1.2	.4	-.8	1.8	-.2
Education <sup>2</sup> .....	197.532	197.794	198.587	199.530	6.2	5.0	.7	4.1	5.6	2.4
Educational books and supplies .....	507.899	509.466	512.598	516.216	4.6	5.3	-3.2	6.7	5.0	1.6
Tuition, other school fees, and childcare .....	555.849	556.496	558.619	561.152	6.4	5.0	1.1	3.9	5.7	2.5
Communication <sup>2</sup> .....	87.340	87.168	87.040	86.495	.0	-1.1	.2	-3.8	-.5	-1.8
Information and information processing <sup>1 2</sup> .....	85.154	84.978	84.846	84.271	-2	-1.2	.2	-4.1	-.7	-2.0
Telephone services <sup>1 2</sup> .....	102.325	102.135	101.975	101.327	-2.1	-.1	1.2	-3.8	-1.1	-1.4
Information technology, hardware and services <sup>1 6</sup> .....	9.891	9.864	9.849	9.767	6.8	-4.8	-3.4	-4.9	.8	-4.1
Personal computers and peripheral equipment <sup>7</sup> .....	76.253	75.608	75.329	73.399	-3.0	-9.0	2.6	-14.2	-6.0	-6.1
Other goods and services .....	413.007	411.642	412.582	414.354	1.0	3.1	4.7	1.3	2.0	3.0
Tobacco and smoking products <sup>1</sup> .....	828.794	826.468	825.644	832.741	1.7	9.9	8.9	1.9	5.7	5.3
Personal care .....	204.868	204.132	204.986	205.359	.5	-6	2.3	1.0	.0	1.6
Personal care products <sup>1</sup> .....	161.132	160.174	160.801	161.217	.5	-6.1	3.1	.2	-2.9	1.7
Personal care services <sup>1</sup> .....	230.624	229.635	229.855	230.332	-2	3.5	.3	-.5	1.6	-.1
Miscellaneous personal services .....	356.667	357.305	358.744	359.650	3.3	.3	2.8	3.4	1.8	3.1
<b>Commodity and service group</b>										
Commodities .....	177.809	178.870	178.792	181.020	2.7	-6.3	6.8	7.4	-1.9	7.1
Food and beverages .....	219.852	220.003	220.512	220.760	1.9	.7	1.9	1.7	1.3	1.8
Commodities less food and beverages .....	155.148	156.567	156.242	159.251	3.2	-10.3	9.9	11.0	-3.8	10.4
Nondurables less food and beverages .....	197.981	200.534	202.072	208.300	2.6	-17.0	16.4	22.5	-7.7	19.4
Apparel .....	118.544	118.175	118.205	118.202	-4.8	1.4	-1.8	-1.1	-1.7	-1.5
Nondurables less food, beverages, and apparel .....	252.387	257.082	258.326	268.291	5.6	-21.5	23.2	27.7	-8.9	25.4
Durables .....	112.925	112.468	111.966	111.940	.6	.8	.7	-3.4	.7	-1.4
Services .....	257.115	257.372	257.614	257.957	1.0	.8	1.0	1.3	.9	1.2
Rent of shelter <sup>4</sup> .....	233.640	233.826	234.549	235.122	-2.0	.3	.9	2.6	-.8	1.8
Tenants' and household insurance <sup>1 2</sup> .....	127.718	128.130	128.556	127.674	3.1	3.1	4.4	-.1	3.1	2.1
Gas (piped) and electricity <sup>3 5</sup> .....	191.045	191.184	189.877	190.741	7.5	-8.6	2.7	-.6	-.9	1.0
Water and sewer and trash collection services <sup>2</sup> .....	173.079	173.455	174.105	174.849	9.0	5.0	4.1	4.2	7.0	4.1
Household operations <sup>1 2</sup> .....	152.851	152.729	152.778	153.116	-1.1	3.1	-1.0	.7	1.0	-.2
Transportation services .....	261.213	262.351	263.299	263.604	3.0	2.9	2.1	3.7	2.9	2.9
Medical care services .....	417.992	418.780	419.099	420.321	5.5	3.0	3.9	2.2	4.3	3.1
Other services .....	296.788	296.741	297.051	296.777	1.4	2.5	.4	.0	1.9	.2
<b>Special indexes</b>										
All items less food .....	213.269	214.020	214.040	215.589	1.5	-2.9	3.9	4.4	-.7	4.1
All items less shelter .....	206.412	207.262	207.268	209.010	2.9	-3.7	4.9	5.1	-.5	5.0
All items less medical care .....	207.125	207.781	207.863	209.217	1.4	-2.7	3.6	4.1	-.7	3.8
Commodities less food .....	157.535	158.926	158.620	161.562	2.9	-9.9	9.6	10.6	-3.7	10.1
Nondurables less food .....	199.695	202.081	203.602	209.514	2.3	-16.1	15.7	21.2	-7.3	18.4
Nondurables less food and apparel .....	248.977	252.930	254.423	263.509	5.1	-19.9	21.6	25.5	-8.3	23.5
Nondurables .....	209.473	211.654	211.827	215.029	3.0	-9.5	9.8	11.0	-3.4	10.4
Services less rent of shelter <sup>4</sup> .....	251.937	252.325	252.500	253.075	3.2	1.0	1.5	1.8	2.1	1.7
Services less medical care services .....	245.846	246.090	246.592	247.083	.1	.6	1.0	2.0	.4	1.5
Energy .....	211.343	217.469	216.534	227.622	10.0	-28.0	29.1	34.6	-11.0	31.8
All items less energy .....	215.669	215.670	215.889	216.073	.7	1.1	.9	.8	.9	.8
All items less food and energy .....	215.303	215.274	215.434	215.603	.4	1.2	.8	.6	.8	.7
Commodities less food and energy commodities .....	146.012	145.595	145.415	145.432	.1	.5	.5	-1.6	.3	-.6
Energy commodities .....	242.121	253.766	253.090	273.641	11.7	-39.2	52.0	63.2	-17.6	57.5
Services less energy services .....	264.313	264.583	265.001	265.284	.5	1.6	.9	1.5	1.0	1.2

<sup>1</sup> Not seasonally adjusted.

<sup>2</sup> Indexes on a December 1997=100 base.

<sup>3</sup> This index series was calculated using a Laspeyres estimator. All other item stratum index series were calculated using a geometric means estimator.

<sup>4</sup> Indexes on a December 1984=100 base

<sup>5</sup> In January, 2011, this series will be re-titled Energy services.

<sup>6</sup> Indexes on a December 1988=100 base.

<sup>7</sup> Indexes on a December 2007=100 base.

NOTE: Index applies to a month as a whole, not to any specific date.

**Table 6. Consumer Price Index for Urban Wage Earners and Clerical Workers (CPI-W): Selected areas, all items index**

(1982-84=100, unless otherwise noted)

CPI-W	Pricing schedule 1	All items									
		Indexes				Percent change to Dec.2010 from—			Percent change to Nov.2010 from—		
		Sep. 2010	Oct. 2010	Nov. 2010	Dec. 2010	Dec. 2009	Oct. 2010	Nov. 2010	Nov. 2009	Sep. 2010	Oct. 2010
U.S. city average .....	M	214.306	214.623	214.750	215.262	1.7	0.3	0.2	1.3	0.2	0.1
<b>Region and area size<sup>2</sup></b>											
Northeast urban .....	M	231.566	232.396	232.962	233.082	1.9	.3	.1	1.7	.6	.2
Size A - More than 1,500,000 .....	M	231.881	232.672	233.031	233.092	1.7	.2	.0	1.5	.5	.2
Size B/C - 50,000 to 1,500,000 <sup>3</sup> .....	M	140.295	140.848	141.452	141.598	2.2	.5	.1	2.1	.8	.4
Midwest urban .....	M	204.442	204.329	204.468	205.024	2.0	.3	.3	1.4	.0	.1
Size A - More than 1,500,000 .....	M	203.946	203.906	204.064	204.731	1.9	.4	.3	1.2	.1	.1
Size B/C - 50,000 to 1,500,000 <sup>3</sup> .....	M	134.361	134.093	134.112	134.454	2.1	.3	.3	1.7	-.2	.0
Size D - Nonmetropolitan (less than 50,000) .....	M	203.086	203.548	203.937	204.132	1.8	.3	.1	1.6	.4	.2
South urban .....	M	209.155	209.376	209.352	209.994	1.6	.3	.3	1.2	.1	.0
Size A - More than 1,500,000 .....	M	211.393	211.409	211.222	211.712	1.4	.1	.2	1.0	-.1	-.1
Size B/C - 50,000 to 1,500,000 <sup>3</sup> .....	M	133.680	133.923	133.927	134.405	1.7	.4	.4	1.4	.2	.0
Size D - Nonmetropolitan (less than 50,000) .....	M	215.346	215.451	215.822	216.477	1.5	.5	.3	1.1	.2	.2
West urban .....	M	215.804	216.273	216.267	216.847	1.4	.3	.3	1.0	.2	.0
Size A - More than 1,500,000 .....	M	218.524	219.017	218.817	219.273	1.5	.1	.2	1.2	.1	-.1
Size B/C - 50,000 to 1,500,000 <sup>3</sup> .....	M	133.346	133.622	133.777	134.306	1.0	.5	.4	.5	.3	.1
<b>Size classes</b>											
A <sup>4</sup> .....	M	198.278	198.576	198.598	198.979	1.6	.2	.2	1.2	.2	.0
B/C <sup>3</sup> .....	M	134.644	134.840	134.969	135.379	1.7	.4	.3	1.4	.2	.1
D .....	M	209.864	210.160	210.529	210.959	1.7	.4	.2	1.3	.3	.2
<b>Selected local areas<sup>5</sup></b>											
Chicago-Gary-Kenosha, IL-IN-WI .....	M	206.897	206.894	206.632	207.479	1.6	.3	.4	.7	-.1	-.1
Los Angeles-Riverside-Orange County, CA ...	M	218.427	219.339	218.694	219.619	1.6	.1	.4	1.0	.1	-.3
New York-Northern N.J.-Long Island, NY-NJ-CT-PA .....	M	236.725	237.483	237.606	237.575	1.8	.0	.0	1.6	.4	.1
Boston-Brockton-Nashua, MA-NH-ME-CT .....	1	236.844	-	238.891	-	-	-	-	.9	.9	-
Cleveland-Akron, OH .....	1	196.787	-	197.530	-	-	-	-	2.4	.4	-
Dallas-Fort Worth, TX .....	1	205.602	-	204.918	-	-	-	-	-.2	-.3	-
Washington-Baltimore, DC-MD-VA-WV <sup>6</sup> .....	1	142.755	-	142.938	-	-	-	-	1.7	.1	-
Atlanta, GA .....	2	-	201.887	-	201.390	1.0	-.2	-	-	-	-
Detroit-Ann Arbor-Flint, MI .....	2	-	201.864	-	202.280	1.3	.2	-	-	-	-
Houston-Galveston-Brazoria, TX .....	2	-	193.110	-	192.863	2.1	-.1	-	-	-	-
Miami-Fort Lauderdale, FL .....	2	-	221.497	-	222.510	.7	.5	-	-	-	-
Philadelphia-Wilmington-Atlantic City, PA-NJ-DE-MD .....	2	-	228.676	-	228.072	1.5	-.3	-	-	-	-
San Francisco-Oakland-San Jose, CA .....	2	-	224.352	-	224.152	1.8	-.1	-	-	-	-
Seattle-Tacoma-Bremerton, WA .....	2	-	223.112	-	222.853	.9	-.1	-	-	-	-

<sup>1</sup> Foods, fuels, and several other items priced every month in all areas; most other goods and services priced as indicated:

M - Every month.

1 - January, March, May, July, September, and November.

2 - February, April, June, August, October, and December.

<sup>2</sup> Regions defined as the four Census regions. See technical notes.

<sup>3</sup> Indexes on a December 1996=100 base.

<sup>4</sup> Indexes on a December 1986=100 base.

<sup>5</sup> In addition, the following metropolitan areas are published semiannually and appear in Tables 34 and 39 of the January and July issues of the CPI Detailed Report: Anchorage, AK; Cincinnati-Hamilton, OH-KY-IN; Denver-Boulder-Greeley, CO; Honolulu, HI; Kansas City, MO-KS; Milwaukee-Racine, WI; Minneapolis-St. Paul, MN-WI; Phoenix-Mesa, AZ; Pittsburgh, PA; Portland-Salem, OR-WA; St. Louis, MO-IL; San Diego, CA;

Tampa-St. Petersburg-Clearwater, FL.

<sup>6</sup> Indexes on a November 1996=100 base.

- Data not available.

NOTE: Local area indexes are byproducts of the national CPI program. Each local index has a smaller sample size than the national index and is, therefore, subject to substantially more sampling and other measurement error. As a result, local area indexes show greater volatility than the national index, although their long-term trends are similar. Therefore, the Bureau of Labor Statistics strongly urges users to consider adopting the national average CPI for use in their escalator clauses.

NOTE: Index applies to a month as a whole, not to any specific date.

**Table 7. Chained Consumer Price Index for All Urban Consumers (C-CPI-U): U.S. city average, by expenditure category and commodity and service group**

(December 1999=100, unless otherwise noted)

<b>C-CPI-U</b>	Relative importance, 2007-2008	Unadjusted indexes		Unadjusted percent change to Dec. 2010 from—	
		Nov. 2010	Dec. 2010	Dec. 2009	Nov. 2010
<b>Expenditure category</b>					
All items .....	100.000	126.650	126.866	1.4	0.2
Food and beverages .....	14.519	128.954	129.126	1.5	.1
Food .....	13.493	128.924	129.123	1.5	.2
Food at home .....	7.780	123.690	123.941	1.7	.2
Food away from home .....	5.712	136.088	136.209	1.3	.1
Alcoholic beverages .....	1.027	129.808	129.620	.9	-.1
Housing .....	42.074	128.047	128.230	.2	.1
Shelter .....	32.119	131.182	131.299	.4	.1
Fuels and utilities .....	5.231	156.764	158.033	1.5	.8
Household furnishings and operations .....	4.724	91.833	91.620	-3.0	-.2
Apparel .....	3.772	90.474	87.883	-1.4	-2.9
Transportation .....	17.199	133.734	135.647	5.6	1.4
Private transportation .....	16.013	134.367	136.349	5.6	1.5
Public transportation .....	1.186	125.263	126.305	4.9	.8
Medical care .....	6.294	151.549	151.631	3.0	.1
Medical care commodities .....	1.570	133.404	133.560	2.8	.1
Medical care services .....	4.723	158.214	158.267	3.1	.0
Recreation .....	6.625	102.131	101.650	-1.7	-.5
Education and communication .....	6.288	113.029	112.661	.9	-.3
Education .....	2.804	187.238	187.485	3.8	.1
Communication .....	3.484	72.757	72.254	-1.4	-.7
Other goods and services .....	3.229	138.820	139.040	1.5	.2
<b>Commodity and service group</b>					
Services .....	59.383	135.698	135.786	1.0	.1
Commodities .....	40.617	115.543	115.920	1.8	.3
Durables .....	10.376	80.299	80.180	-1.5	-.1
Nondurables .....	30.241	133.968	134.623	3.0	.5
All items less food and energy .....	76.901	120.113	119.924	.5	-.2
Energy .....	9.606	188.456	193.850	7.8	2.9

Indexes for 2010 are initial estimates. Indexes for 2009 are interim adjustments.  
NOTE: Index applies to a month as a whole, not to any specific date.

**Table 1A. Consumer Price Index for All Urban Consumers (CPI-U): U.S. city average, by expenditure category and commodity and service group**

(1982-84=100, unless otherwise noted)

<b>CPI-U</b>	Annual average 2009	Annual average 2010	Percent change from 2009 to 2010
<b>Expenditure category</b>			
All items .....	214.537	218.056	1.6
All items (1967=100) .....	642.658	653.198	-
Food and beverages .....	218.249	219.984	.8
Food .....	217.955	219.625	.8
Food at home .....	215.124	215.836	.3
Cereals and bakery products .....	252.567	250.449	-.8
Meats, poultry, fish, and eggs .....	203.805	207.694	1.9
Dairy and related products .....	197.013	199.245	1.1
Fruits and vegetables .....	272.945	273.458	.2
Nonalcoholic beverages and beverage materials .....	163.034	161.602	-.9
Other food at home .....	191.220	191.124	-.1
Sugar and sweets .....	196.933	201.242	2.2
Fats and oils .....	201.224	200.587	-.3
Other foods .....	205.497	204.553	-.5
Other miscellaneous foods <sup>1</sup> .....	122.393	121.683	-.6
Food away from home .....	223.272	226.114	1.3
Other food away from home <sup>1</sup> .....	155.852	159.276	2.2
Alcoholic beverages .....	220.751	223.291	1.2
Housing .....	217.057	216.256	-.4
Shelter .....	249.354	248.396	-.4
Rent of primary residence .....	248.812	249.385	.2
Lodging away from home <sup>1</sup> .....	134.243	133.656	-.4
Owners' equivalent rent of residences <sup>2</sup> .....	256.610	256.584	.0
Owners' equivalent rent of primary residence <sup>2</sup> .....	256.610	256.578	.0
Tenants' and household insurance <sup>1</sup> .....	121.487	125.682	3.5
Fuels and utilities .....	210.696	214.187	1.7
Household energy .....	188.113	189.286	.6
Fuel oil and other fuels .....	239.778	275.132	14.7
Gas (piped) and electricity <sup>3</sup> .....	193.563	192.886	-.3
Household furnishings and operations .....	128.701	125.490	-2.5
Apparel .....	120.078	119.503	-.5
Men's and boys' apparel .....	113.628	111.914	-1.5
Women's and girls' apparel .....	108.091	107.081	-.9
Infants' and toddlers' apparel .....	114.489	114.180	-.3
Footwear .....	126.854	127.988	.9
Transportation .....	179.252	193.396	7.9
Private transportation .....	174.762	188.747	8.0
New and used motor vehicles <sup>1</sup> .....	93.486	97.149	3.9
New vehicles .....	135.623	138.005	1.8
Used cars and trucks .....	126.973	143.128	12.7
Motor fuel .....	201.978	239.178	18.4
Gasoline (all types) .....	201.555	238.594	18.4
Motor vehicle parts and equipment .....	134.050	136.995	2.2
Motor vehicle maintenance and repair .....	243.337	247.954	1.9
Public transportation .....	236.348	251.351	6.3
Medical care .....	375.613	388.436	3.4
Medical care commodities .....	305.108	314.717	3.1
Medical care services .....	397.299	411.208	3.5
Professional services .....	319.372	328.186	2.8
Hospital and related services .....	567.879	607.679	7.0
Recreation <sup>1</sup> .....	114.272	113.313	-.8

See footnotes at end of table.

**Table 1A. Consumer Price Index for All Urban Consumers (CPI-U): U.S. city average, by expenditure category and commodity and service group-Continued**

(1982-84=100, unless otherwise noted)

<b>CPI-U</b>	Annual average 2009	Annual average 2010	Percent change from 2009 to 2010
<b>Expenditure category</b>			
Video and audio <sup>1</sup> .....	101.276	99.122	-2.1
Education and communication <sup>1</sup> .....	127.393	129.919	2.0
Education <sup>1</sup> .....	190.857	199.337	4.4
Educational books and supplies .....	482.072	505.569	4.9
Tuition, other school fees, and childcare .....	548.971	573.174	4.4
Communication <sup>1</sup> .....	84.954	84.681	-.3
Information and information processing <sup>1</sup> .....	81.944	81.513	-.5
Telephone services <sup>1</sup> .....	102.392	102.379	.0
Information technology, hardware and services <sup>4</sup> .....	9.672	9.413	-2.7
Personal computers and peripheral equipment <sup>5</sup> .....	82.304	76.377	-7.2
Other goods and services .....	368.586	381.291	3.4
Tobacco and smoking products .....	730.316	807.330	10.5
Personal care .....	204.587	206.643	1.0
Personal care products .....	162.578	161.062	-.9
Personal care services .....	227.588	229.614	.9
Miscellaneous personal services .....	344.469	354.052	2.8
<b>Commodity and service group</b>			
Commodities .....	169.698	174.566	2.9
Food and beverages .....	218.249	219.984	.8
Commodities less food and beverages .....	144.395	150.392	4.2
Nondurables less food and beverages .....	178.959	189.916	6.1
Apparel .....	120.078	119.503	-.5
Nondurables less food, beverages, and apparel .....	219.592	238.053	8.4
Durables .....	109.859	111.324	1.3
Services .....	259.154	261.274	.8
Rent of shelter <sup>2</sup> .....	259.924	258.823	-.4
Transportation services .....	251.031	259.823	3.5
Other services .....	303.992	309.602	1.8
<b>Special indexes</b>			
All items less food .....	214.008	217.828	1.8
All items less shelter .....	203.301	208.643	2.6
All items less medical care .....	206.555	209.689	1.5
Commodities less food .....	147.071	152.990	4.0
Nondurables less food .....	181.453	191.927	5.8
Nondurables less food and apparel .....	218.687	235.601	7.7
Nondurables .....	198.548	205.271	3.4
Services less rent of shelter <sup>2</sup> .....	278.064	284.368	2.3
Services less medical care services .....	248.122	249.569	.6
Energy .....	193.126	211.449	9.5
All items less energy .....	218.433	220.458	.9
All items less food and energy .....	219.235	221.337	1.0
Commodities less food and energy commodities .....	142.041	143.588	1.1
Energy commodities .....	205.281	242.636	18.2
Services less energy services .....	265.875	268.278	.9
Purchasing power of the consumer dollar (1982-84=\$1.00) .....	\$ .466	\$ .459	-
Purchasing power of the consumer dollar (1967=\$1.00) .....	\$ .156	\$ .153	-

<sup>1</sup> Indexes on a December 1997=100 base.

<sup>2</sup> Indexes on a December 1982=100 base.

<sup>3</sup> In January, 2011, this series will be re-titled Energy services.

<sup>4</sup> Indexes on a December 1988=100 base.

<sup>5</sup> Indexes on a December 2007=100 base.

- Data not available.

**Table 4A. Consumer Price Index for Urban Wage Earners and Clerical Workers (CPI-W): U.S. city average, by expenditure category and commodity and service group**

(1982-84=100, unless otherwise noted)

<b>CPI-W</b>	Annual average 2009	Annual average 2010	Percent change from 2009 to 2010
<b>Expenditure category</b>			
All items .....	209.630	213.967	2.1
All items (1967=100) .....	624.423	637.342	-
Food and beverages .....	217.480	219.182	.8
Food .....	217.118	218.730	.7
Food at home .....	213.908	214.638	.3
Cereals and bakery products .....	253.214	251.024	-.9
Meats, poultry, fish, and eggs .....	203.394	207.431	2.0
Dairy and related products .....	195.679	197.992	1.2
Fruits and vegetables .....	270.562	270.713	.1
Nonalcoholic beverages and beverage materials .....	162.598	161.214	-.9
Other food at home .....	190.519	190.294	-.1
Sugar and sweets .....	195.702	200.035	2.2
Fats and oils .....	202.003	200.909	-.5
Other foods .....	205.573	204.577	-.5
Other miscellaneous foods <sup>1</sup> .....	122.753	121.872	-.7
Food away from home .....	223.383	226.204	1.3
Other food away from home <sup>1</sup> .....	155.607	159.794	2.7
Alcoholic beverages .....	221.325	224.368	1.4
Housing .....	213.144	212.880	-.1
Shelter .....	242.637	242.309	-.1
Rent of primary residence .....	247.401	247.725	.1
Lodging away from home <sup>1</sup> .....	135.163	135.119	.0
Owners' equivalent rent of residences <sup>2</sup> .....	232.499	232.461	.0
Owners' equivalent rent of primary residence <sup>2</sup> .....	232.499	232.462	.0
Tenants' and household insurance <sup>1</sup> .....	121.935	126.739	3.9
Fuels and utilities .....	209.595	212.885	1.6
Household energy .....	186.229	187.272	.6
Fuel oil and other fuels .....	243.003	277.433	14.2
Gas (piped) and electricity <sup>3</sup> .....	191.981	191.552	-.2
Water and sewer and trash collection services <sup>1</sup> .....	161.584	171.446	6.1
Household furnishings and operations .....	124.632	121.555	-2.5
Household operations <sup>1</sup> .....	152.818	152.707	-.1
Apparel .....	119.847	118.733	-.9
Men's and boys' apparel .....	114.340	111.811	-2.2
Women's and girls' apparel .....	107.602	106.360	-1.2
Infants' and toddlers' apparel .....	117.202	117.415	.2
Footwear .....	127.183	127.593	.3
Transportation .....	176.729	192.560	9.0
Private transportation .....	173.491	189.257	9.1
New and used motor vehicles <sup>1</sup> .....	91.308	96.271	5.4
New vehicles .....	136.711	139.044	1.7
Used cars and trucks .....	127.687	144.007	12.8
Motor fuel .....	202.695	240.094	18.5
Gasoline (all types) .....	202.375	239.629	18.4
Motor vehicle parts and equipment .....	134.133	136.998	2.1
Motor vehicle maintenance and repair .....	245.795	250.543	1.9
Public transportation .....	234.661	248.713	6.0
Medical care .....	376.064	389.766	3.6
Medical care commodities .....	296.724	306.257	3.2
Medical care services .....	399.165	414.273	3.8
Professional services .....	322.127	331.456	2.9

See footnotes at end of table.

**Table 4A. Consumer Price Index for Urban Wage Earners and Clerical Workers (CPI-W): U.S. city average, by expenditure category and commodity and service group-Continued**

(1982-84=100, unless otherwise noted)

<b>CPI-W</b>	Annual average 2009	Annual average 2010	Percent change from 2009 to 2010
<b>Expenditure category</b>			
Hospital and related services .....	565.029	608.516	7.7
Recreation <sup>1</sup> .....	111.015	109.812	-1.1
Video and audio <sup>1</sup> .....	101.602	99.643	-1.9
Education and communication <sup>1</sup> .....	123.017	124.891	1.5
Education <sup>1</sup> .....	188.143	196.606	4.5
Educational books and supplies .....	485.025	508.386	4.8
Tuition, other school fees, and childcare .....	529.316	552.958	4.5
Communication <sup>1</sup> .....	87.662	87.317	-4
Information and information processing <sup>1</sup> .....	85.571	85.126	-5
Telephone services <sup>1</sup> .....	102.341	102.086	-2
Information technology, hardware and services <sup>4</sup> .....	10.178	9.960	-2.1
Personal computers and peripheral equipment <sup>5</sup> .....	82.104	76.273	-7.1
Other goods and services .....	391.628	409.278	4.5
Tobacco and smoking products .....	735.056	812.347	10.5
Personal care .....	202.490	204.299	.9
Personal care products .....	162.557	161.174	-.9
Personal care services .....	227.804	229.824	.9
Miscellaneous personal services .....	346.500	355.502	2.6
<b>Commodity and service group</b>			
Commodities .....	171.452	177.545	3.6
Food and beverages .....	217.480	219.182	.8
Commodities less food and beverages .....	147.327	155.064	5.3
Nondurables less food and beverages .....	185.579	198.517	7.0
Apparel .....	119.847	118.733	-.9
Nondurables less food, beverages, and apparel .....	230.503	252.481	9.5
Durables .....	109.610	112.513	2.6
Services .....	254.267	256.628	.9
Rent of shelter <sup>2</sup> .....	233.917	233.507	-.2
Tenants' and household insurance <sup>1</sup> .....	121.935	126.739	3.9
Gas (piped) and electricity <sup>3</sup> .....	191.981	191.552	-.2
Water and sewer and trash collection services <sup>1</sup> .....	161.584	171.446	6.1
Household operations <sup>1</sup> .....	152.818	152.707	-.1
Transportation services .....	250.960	259.985	3.6
Medical care services .....	399.165	414.273	3.8
Other services .....	291.572	296.066	1.5
<b>Special indexes</b>			
All items less food .....	208.128	212.938	2.3
All items less shelter .....	199.860	205.943	3.0
All items less medical care .....	202.810	206.828	2.0
Commodities less food .....	149.780	157.422	5.1
Nondurables less food .....	187.718	200.147	6.6
Nondurables less food and apparel .....	228.679	248.965	8.9
Nondurables .....	201.628	209.360	3.8
Services less rent of shelter <sup>2</sup> .....	245.814	251.210	2.2
Services less medical care services .....	243.796	245.533	.7
Energy .....	192.594	211.926	10.0
All items less energy .....	212.652	215.173	1.2
All items less food and energy .....	212.126	214.835	1.3
Commodities less food and energy commodities .....	143.099	145.728	1.8
Energy commodities .....	205.325	242.805	18.3
Services less energy services .....	261.022	263.713	1.0
Purchasing power of the consumer dollar (1982-84=\$1.00) .....	\$ .477	\$ .467	-
Purchasing power of the consumer dollar (1967=\$1.00) .....	\$ .160	\$ .157	-

<sup>1</sup> Indexes on a December 1997=100 base.

<sup>2</sup> Indexes on a December 1984=100 base

<sup>3</sup> In January, 2011, this series will be re-titled Energy services.

<sup>4</sup> Indexes on a December 1988=100 base.

<sup>5</sup> Indexes on a December 2007=100 base.

- Data not available.