

**Transmission of material in this release is embargoed until
8:30 a.m. (EST) Friday, February 19, 2010**

USDL-10-0207

Technical information: (202) 691-7000 • Reed.Steve@bls.gov • www.bls.gov/cpi
Media Contact: (202) 691-5902 • PressOffice@bls.gov

(NOTE: This release was reissued on Friday, July 16, 2010, to correct errors in the January 2010 data. Corrections have been made to Table 7. There were no changes made to the text of the release.)

CONSUMER PRICE INDEX – JANUARY 2010

On a seasonally adjusted basis, the January Consumer Price Index for All Urban Consumers (CPI-U) rose 0.2 percent, the U.S. Bureau of Labor Statistics reported today. Over the last 12 months, the index increased 2.6 percent before seasonal adjustment.

The seasonally adjusted increase in the all items index was due to a rise in the energy index. An increase in the gasoline index was the main factor, and the indexes for fuel oil and natural gas rose as well, though the electricity index declined.

The index for all items less food and energy fell 0.1 percent in January. This decline was largely the result of decreases in the indexes for shelter, new vehicles, and airline fares. In contrast, the medical care index posted its largest increase since January 2008, and the index for used cars and trucks increased significantly for the sixth month in a row.

The food index increased in January, with the food at home component posting its largest increase since September 2008. Sharp increases in the indexes for dairy and related products and for fruits and vegetables accounted for most of the increase.

Chart 1. One-month percent change in CPI for All Urban Consumers (CPI-U), seasonally adjusted, Jan. 2009 - Jan. 2010
Percent change

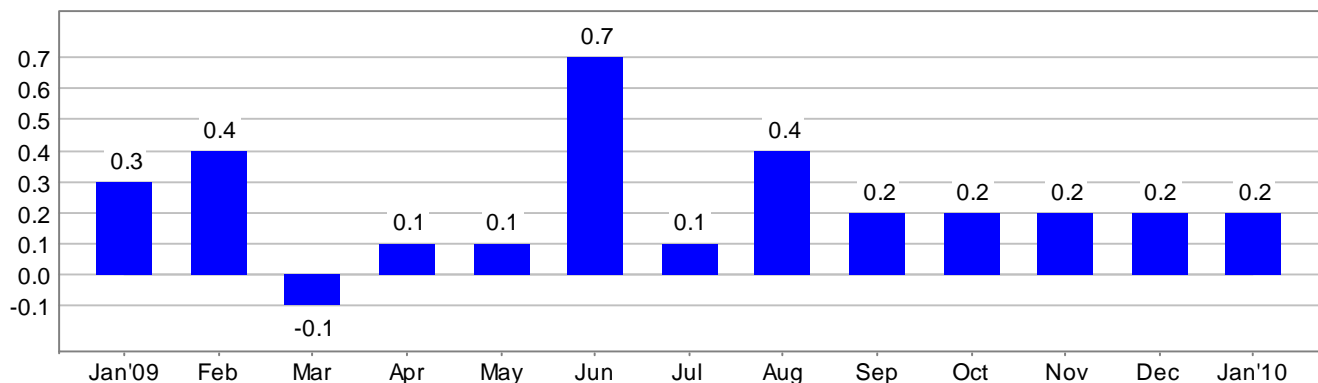


Chart 2. 12-month percent change in CPI for All Urban Consumers (CPI-U), not seasonally adjusted, Jan. 2009 - Jan. 2010

Percent change

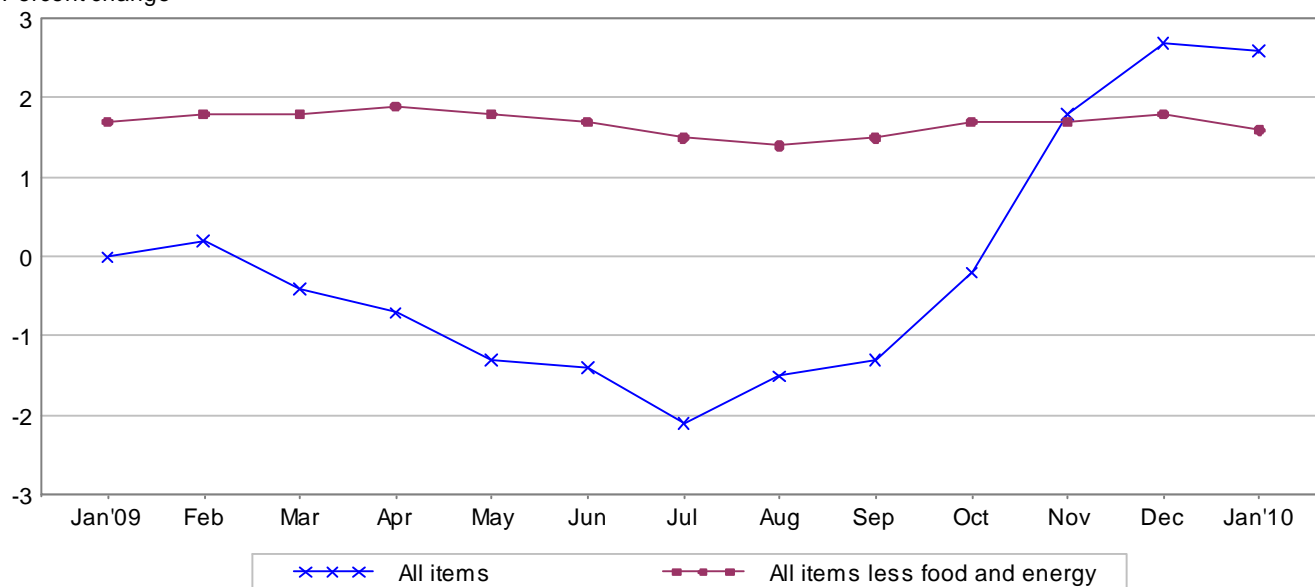


Table A. Percent changes in CPI for All Urban Consumers (CPI-U): U.S. city average

	Seasonally adjusted changes from preceding month							Un- adjusted 12-mos. ended Jan. 2010
	July 2009	Aug. 2009	Sep. 2009	Oct. 2009	Nov. 2009	Dec. 2009	Jan. 2010	
All items1	.4	.2	.2	.2	.2	.2	2.6
Food	-.2	.0	-.1	.0	.1	.1	.2	-4
Food at home	-.5	-.1	-.3	.0	.0	.2	.4	-2.0
Food away from home ¹1	.1	.1	.1	.2	.1	.1	1.6
Energy5	3.7	.6	.6	2.2	.8	2.8	19.1
Energy commodities	1.0	6.7	1.1	.4	3.0	1.6	4.9	46.6
Gasoline (all types)	1.1	6.9	.9	.3	2.7	2.3	4.4	51.3
Fuel oil ¹	-.3	5.0	-.3	2.2	7.4	.0	6.1	19.3
Energy services	-.2	.1	-.1	.8	1.1	-.3	.0	-4.7
Electricity	-.4	-.1	.3	.8	1.2	-.2	-1.1	-1.9
Utility (piped) gas service5	.5	-1.5	.7	.9	-.7	3.5	-12.2
All items less food and energy1	.1	.2	.2	.0	.1	-.1	1.6
Commodities less food and energy								
commodities2	-.2	.3	.4	.2	.1	.1	2.9
New vehicles5	-1.0	.3	1.4	.5	-.2	-.5	4.1
Used cars and trucks0	2.0	1.7	3.1	1.9	2.2	1.5	11.5
Apparel4	.0	.2	-.3	-.3	.4	-.1	1.7
Medical care commodities ¹	-.1	.5	.6	.2	.1	-.1	.7	3.5
Services less energy services1	.2	.1	.1	.0	.1	-.2	1.0
Shelter	-.1	.1	.0	.0	-.2	.0	-.5	-.1
Transportation services5	.5	.7	.5	.5	.3	-.3	3.3
Medical care services3	.2	.3	.2	.3	.2	.5	3.5

¹ Not seasonally adjusted.

Consumer Price Index Data for January 2010

Food

The food index rose 0.2 percent in January. The food at home index increased 0.4 percent, with four of the six grocery store food groups posting increases. The index for dairy and related products rose 2.1 percent in January, but still has declined over the past 12 months. The index for fruits and vegetables increased 1.3 percent due to a 2.8 percent increase in the index for fresh fruits. The index for meats, poultry, fish, and eggs rose 0.4 percent and the index for nonalcoholic beverages advanced 0.2 percent. The indexes for cereals and bakery products declined in January, falling 0.5 percent, and the index for other food at home declined 0.3 percent. The index for food away from home increased 0.1 percent in January. Over the last 12 months, the food index has declined 0.4 percent with the food at home index down 2.0 percent and the index for food away from home up 1.6 percent.

Energy

The energy index rose 2.8 percent in January, its ninth consecutive increase. The index for energy commodities increased 4.9 percent, with the gasoline index rising 4.4 percent. The index for household energy rose 0.5 percent in January. The fuel oil index increased 6.1 percent and the index for natural gas rose 3.5 percent, while the electricity index declined 1.1 percent. Over the past 12 months, the energy index has risen 19.1 percent, with the gasoline index up 51.3 percent but the index for household energy down 3.5 percent.

All items less food and energy

The index for all items less food and energy declined 0.1 percent in January after rising 0.1 percent in December. The shelter index declined 0.5 percent. The index for lodging away from home fell 2.1 percent, while the rent index was unchanged and the index for owners' equivalent rent declined 0.1 percent. The index for new vehicles fell 0.5 percent, its second consecutive decline, and the index for airline fares turned down in January, falling 2.5 percent after increasing in each of the past six months. The indexes for household furnishings and operations, for apparel, and for recreation all decreased 0.1 percent in January. In contrast, the medical care index rose 0.5 percent. The index for medical care commodities rose 0.7 percent and the medical care services index advanced 0.5 percent. Also increasing was the index for used cars and trucks, which rose 1.5 percent in January and has increased 12.9 percent over the past six months. The index for all items less food and energy has risen 1.6 percent over the past 12 months.

Not seasonally adjusted CPI measures

The Consumer Price Index for All Urban Consumers (CPI-U) increased 2.6 percent over the last 12 months to an index level of 216.687 (1982-84=100). For the month, the index increased 0.3 percent prior to seasonal adjustment.

The Consumer Price Index for Urban Wage Earners and Clerical Workers (CPI-W) increased 3.3 percent over the last 12 months to an index level of 212.568 (1982-84=100). For the month, the index increased 0.4 percent prior to seasonal adjustment.

The Chained Consumer Price Index for All Urban Consumers (C-CPI-U) increased 2.8 percent over the last 12 months. For the month, the index increased 0.4 percent on a not seasonally adjusted basis. Please note that the indexes for the post-2008 period are subject to revision.

The Consumer Price Index for February 2010 is scheduled to be released on Thursday, March 18, 2010, at 8:30 a.m. (EDT).

Effective with this release of CPI data, the BLS is introducing several item structure and other publication changes into the CPI. See page 6 for further information.

Revised seasonally adjusted changes

Over-the-month percent changes in the U.S. City Average Consumer Price Index for All Urban Consumers (CPI-U) for All Items and for All Items less food and energy, seasonally adjusted, using former and recalculated seasonal factors for 2009.

All Items

2009	Former	Recalculated	Difference
January	.3	.3	.0
February	.4	.4	.0
March	-.1	-.1	.0
April	.0	.1	.1
May	.1	.1	.0
June	.7	.7	.0
July	.0	.1	.1
August	.4	.4	.0
September	.2	.2	.0
October	.3	.2	-.1
November	.4	.2	-.2
December	.1	.2	.1

All Items less food and energy

2009	Former	Recalculated	Difference
January	.2	.2	.0
February	.2	.2	.0
March	.2	.2	.0
April	.3	.2	-.1
May	.1	.1	.0
June	.2	.2	.0
July	.1	.1	.0
August	.1	.1	.0
September	.2	.2	.0
October	.2	.2	.0
November	.0	.0	.0
December	.1	.1	.0

C-CPI-U Index Revisions

As scheduled, effective with release of data for January 2010, the Chained Consumer Price Index for All Urban Consumers (C-CPI-U) has undergone its annual revision. Because the current expenditure data required for the calculation of the C-CPI-U are available only with a time lag, the index is issued first in preliminary form, using the latest available expenditure data at the time of publication, and is subject to two subsequent revisions. Therefore, C-CPI-U indexes for the 12 months of 2008 will be issued in final form – employing monthly expenditure weights from 2008. Values for the 12 months of 2009 will be revised and issued as interim, using expenditure weights from the 2007-2008 period. Calculation of the initial value of the January 2010 C-CPI-U index, and all subsequent months in 2010, will also be based upon 2007-2008 expenditure weights.

For more information on the C-CPI-U, contact Rob Cage by telephone at (202) 691-6959 or by electronic mail at Cage.Rob@bls.gov.

Item Structure and publication changes for January 2010

Effective with this release of CPI data, the BLS is introducing several item structure and other publication changes into the CPI.

Shelter. The expenditure weight for second homes will be moved from Lodging away from home to a new, unpriced stratum under the Owners' equivalent rent expenditure class. As such, the expenditure class index for Owners' equivalent rent will now include both primary and secondary homes, and the title of that expenditure class index will change from Owners' equivalent rent of primary residences to Owners' equivalent rent of residences. Both the expenditure class (Owners' equivalent rent of residences), and the Owners' equivalent rent of primary residence stratum within it, will be published.

Current Structure

Lodging away from home
Housing at school, excluding board
Other lodging away from home including hotels and motels

Owners' equivalent rent of primary residence
Owners' equivalent rent of primary residence*

New Structure

Lodging away from home
Housing at school, excluding board
Other lodging away from home, including hotels and motels

Owners' equivalent rent of residences
Owners' equivalent rent of primary residence
Unsampled owners' equivalent rent of secondary residences*

Medical care commodities. The item structure for Medical care commodities will change:

Current Structure

Medical care commodities

Prescription drugs

Prescription drugs

Unsampled rent or repair of medical equipment*

Nonprescription drugs and medical supplies

Internal and respiratory OTC drugs

Nonprescription medical equipment and supplies

New Structure

Medical Care Commodities

Medicinal drugs

Prescription drugs

Nonprescription drugs

Medical equipment and supplies

Medical equipment and supplies

Unsampled rent or repair of medical equipment*

Telephone services. The item structure for telephone services will also change:

Current structure

Telephone services

Land-line telephone services, local charges

Land-line telephone services, long distance

Wireless telephone services

New structure

Telephone services

Wireless telephone services

Land-line telephone services

Indexes that are deemed continuous will have the same reference base previously used. New index series will have a December 2009 = 100 reference base. Unpublished series are indicated with a *.

Other publication changes

The index for State and local registration and license will be retitled State motor vehicle registration and license fees.

A new index for Intracity mass transit will be published. Indexes for Land-line interstate toll calls and Land-line intrastate toll calls will be discontinued.

Expenditure Weight Update

Effective with the release of the January 2010 CPI on February 19, 2010, the Bureau of Labor Statistics (BLS) will update the consumption expenditure weights in the Consumer Price Index for All Urban Consumers (CPI-U) and Consumer Price Index for Urban Wage Earners and Clerical Workers (CPI-W) to the 2007-08 period. The updated expenditure weights for these indexes will replace the 2005-2006 weights that were introduced effective with the January 2008 CPI release. As originally announced by BLS in December 1998, CPI expenditure weights will continue to be updated at two-year intervals.

Facilities for Sensory Impaired

Information from this release will be made available to sensory impaired individuals upon request. Voice phone: 202-691-5200, Federal Relay Services: 1-800-877-8339.

Brief Explanation of the CPI

The Consumer Price Index (CPI) is a measure of the average change in prices over time of goods and services purchased by households. The Bureau of Labor Statistics publishes CPIs for two population groups: (1) the CPI for Urban Wage Earners and Clerical Workers (CPI-W), which covers households of wage earners and clerical workers that comprise approximately 32 percent of the total population and (2) the CPI for All Urban Consumers (CPI-U) and the Chained CPI for All Urban Consumers (C-CPI-U), which cover approximately 87 percent of the total population and include in addition to wage earners and clerical worker households, groups such as professional, managerial, and technical workers, the self-employed, short-term workers, the unemployed, and retirees and others not in the labor force.

The CPIs are based on prices of food, clothing, shelter, and fuels, transportation fares, charges for doctors' and dentists' services, drugs, and other goods and services that people buy for day-to-day living. Prices are collected each month in 87 urban areas across the country from about 4,000 housing units and approximately 25,000 retail establishments-department stores, supermarkets, hospitals, filling stations, and other types of stores and service establishments. All taxes directly associated with the purchase and use of items are included in the index. Prices of fuels and a few other items are obtained every month in all 87 locations. Prices of most other commodities and services are collected every month in the three largest geographic areas and every other month in other areas. Prices of most goods and services are obtained by personal visits or telephone calls of the Bureau's trained representatives.

In calculating the index, price changes for the various items in each location are averaged together with weights, which represent their importance in the spending of the appropriate population group. Local data are then combined to obtain a U.S. city average. For the CPI-U and CPI-W separate indexes are also published by size of city, by region of the country, for cross-classifications of regions and population-size classes, and for 27 local areas. Area indexes do not measure differences in the level of prices among cities; they only measure the average change in prices for each area since the base period. For the C-CPI-U data are issued only at the national level. It is important to note that the CPI-U and CPI-W are considered final when released, but the C-CPI-U is issued in preliminary form and subject to two annual revisions.

The index measures price change from a designed reference date. For the CPI-U and the CPI-W the reference base is 1982-84 equals 100.0. The reference base for the C-CPI-U is December 1999 equals 100. An increase of 16.5 percent from the reference base, for example, is shown as 116.5. This change can also be expressed in dollars as follows: the price of a base period market basket of goods and services in the CPI has risen from \$10 in 1982-84 to \$11.65.

For further details visit the CPI home page on the Internet at <http://www.bls.gov/cpi/> or contact our CPI Information and Analysis Section on (202) 691-7000.

Note on Sampling Error in the Consumer Price Index

The CPI is a statistical estimate that is subject to sampling error because it is based upon a sample of retail prices and not the complete universe of all prices. BLS calculates and publishes estimates of the 1-month, 2-month, 6-month and 12-month percent change standard errors annually, for the CPI-U. These standard error estimates can be used to construct confidence intervals for hypothesis testing. For example, the estimated standard error of the 1 month percent change is 0.04 percent for the U.S. All Items Consumer Price Index. This means that if we repeatedly sample from the universe of all retail prices using the same methodology, and estimate a percentage change for each sample, then 95% of these estimates would be within 0.08 percent of the 1 month percentage change based on all retail prices. For example, for a 1-month change of 0.2 percent in the All Items CPI for All Urban Consumers, we are 95 percent confident that the actual percent change based on all retail prices would fall between 0.12 and 0.28 percent. For the latest data, including information on how to use the estimates of standard error, see “Variance Estimates for Price Changes in the Consumer Price Index, January-December 2008”. These data are available on the CPI home page (<http://www.bls.gov/cpi/>), or by using the following link <http://www.bls.gov/cpi/cpivar2008.pdf>

Calculating Index Changes

Movements of the indexes from one month to another are usually expressed as percent changes rather than changes in index points, because index point changes are affected by the level of the index in relation to its base period while percent changes are not. The example below illustrates the computation of index point and percent changes.

Percent changes for 3-month and 6-month periods are expressed as annual rates and are computed according to the standard formula for compound growth rates. These data indicate what the percent change would be if the current rate were maintained for a 12-month period.

Index Point Change

CPI	202.416
Less previous index	201.800
Equals index point change	.616

Percent Change

Index point difference	.616
Divided by the previous index	201.800
Equals	0.003
Results multiplied by one hundred	0.003x100
Equals percent change	0.3

Regions Defined

The states in the four regions shown in Tables 3 and 6 are listed below.

The Northeast--Connecticut, Maine, Massachusetts, New Hampshire, New York, New Jersey, Pennsylvania, Rhode Island, and Vermont.

The Midwest--Illinois, Indiana, Iowa, Kansas, Michigan, Minnesota, Missouri, Nebraska, North Dakota, Ohio, South Dakota, and Wisconsin.

The South--Alabama, Arkansas, Delaware, Florida, Georgia, Kentucky, Louisiana, Maryland, Mississippi, North Carolina, Oklahoma, South Carolina, Tennessee, Texas, Virginia, West Virginia, and the District of Columbia.

The West--Alaska, Arizona, California, Colorado, Hawaii, Idaho, Montana, Nevada, New Mexico, Oregon, Utah, Washington, and Wyoming.

A Note on Seasonally Adjusted and Unadjusted Data

Because price data are used for different purposes by different groups, the Bureau of Labor Statistics publishes seasonally adjusted as well as unadjusted changes each month.

For analyzing general price trends in the economy, seasonally adjusted changes are usually preferred since they eliminate the effect of changes that normally occur at the same time and in about the same magnitude every year--such as price movements resulting from changing climatic conditions, production cycles, model changeovers, holidays, and sales.

The unadjusted data are of primary interest to consumers concerned about the prices they actually pay. Unadjusted data also are used extensively for escalation purposes. Many collective bargaining contract agreements and pension plans, for example, tie compensation changes to the Consumer Price Index before adjustment for seasonal variation.

Seasonal factors used in computing the seasonally adjusted indexes are derived by the X-12-ARIMA Seasonal Adjustment Method. Seasonally adjusted indexes and seasonal factors are computed annually. Each year, the last 5 years of seasonally adjusted data are revised. Data from January 2005 through December 2009 were replaced in January 2010. Exceptions to the usual revision schedule were: the updated seasonal data at the end of 1977 replaced data from 1967 through 1977; and, in January 2002, dependently seasonally adjusted series were revised for January 1987-December 2001 as a result of a change in the aggregation weights for dependently adjusted series. For further information, please see "Aggregation of Dependently Adjusted Seasonally Adjusted Series," in the October 2001 issue of the CPI Detailed Report.

The seasonal movement of all items and 54 other aggregations is derived by combining the seasonal movement of 73 selected components. Each year the seasonal status of every series is reevaluated based

upon certain statistical criteria. If any of the 73 components change their seasonal adjustment status from seasonally adjusted to not seasonally adjusted, not seasonally adjusted data will be used in the aggregation of the dependent series for the last 5 years, but the seasonally adjusted indexes will be used before that period. Note: 46 of the 73 components are seasonally adjusted for 2010.

Seasonally adjusted data, including the all items index levels, are subject to revision for up to five years after their original release. For this reason, BLS advises against the use of these data in escalation agreements.

Effective with the calculation of the seasonal factors for 1990, the Bureau of Labor Statistics has used an enhanced seasonal adjustment procedure called Intervention Analysis Seasonal Adjustment for some CPI series. Intervention Analysis Seasonal Adjustment allows for better estimates of seasonally adjusted data. Extreme values and/or sharp movements which might distort the seasonal pattern are estimated and removed from the data prior to calculation of seasonal factors. Beginning with the calculation of seasonal factors for 1996, X-12-ARIMA software was used for Intervention Analysis Seasonal Adjustment.

For the seasonal factors introduced in January 2010, BLS adjusted 30 series using Intervention Analysis Seasonal Adjustment, including selected food and beverage items, motor fuels, electricity and vehicles. For example, this procedure was used for the Motor fuel series to offset the effects of events such as damage to oil refineries from Hurricane Katrina.

For a complete list of Intervention Analysis Seasonal Adjustment series and explanations, please refer to the article "Intervention Analysis Seasonal Adjustment", located on our website at <http://www.bls.gov/cpi/cpisapage.htm>.

For additional information on seasonal adjustment in the CPI, please write to the Bureau of Labor Statistics, Division of Consumer Prices and Price Indexes, Washington, DC 20212 or contact David Levin at (202) 691-6968, or by e-mail at Levin.David@bls.gov. If you have general questions about the CPI, please call our information staff at (202) 691-7000.

Table 1. Consumer Price Index for All Urban Consumers (CPI-U): U.S. city average, by expenditure category and commodity and service group

(1982-84=100, unless otherwise noted)

CPI-U Expenditure category	Relative importance, December 2009	Unadjusted indexes		Unadjusted percent change to Jan. 2010 from—		Seasonally adjusted percent change from—		
		Dec. 2009	Jan. 2010	Jan. 2009	Dec. 2009	Oct. to Nov.	Nov. to Dec.	Dec. to Jan.
All items	100.000	215.949	216.687	2.6	0.3	0.2	0.2	0.2
All items (1967=100)	-	646.887	649.098	-	-	-	-	-
Food and beverages	14.795	218.049	219.223	-.2	.5	.1	.1	.2
Food	13.738	217.637	218.874	-.4	.6	.1	.1	.2
Food at home	7.801	213.359	215.404	-2.0	1.0	.0	.2	.4
Cereals and bakery products	1.108	251.019	250.725	-1.5	-1	.0	.4	-.5
Meats, poultry, fish, and eggs	1.745	201.003	201.870	-3.2	.4	.4	-.1	.4
Dairy and related products ¹820	194.792	198.949	-5.1	2.1	-.7	.5	2.1
Fruits and vegetables	1.153	273.189	279.119	-1.2	2.2	.1	.4	1.3
Nonalcoholic beverages and beverage materials952	161.216	163.684	-.7	1.5	-2	.0	.2
Other food at home	2.023	189.921	190.994	-.8	.6	-.1	.2	-.3
Sugar and sweets295	198.712	199.777	1.2	.5	.5	.3	-.3
Fats and oils232	197.391	200.220	-3.2	1.4	-3	.6	.2
Other foods	1.496	203.832	204.719	-.8	.4	-.2	.2	-.3
Other miscellaneous foods ^{1 2}439	122.422	121.564	-2.0	-7	-7	1.0	-.7
Food away from home ¹	5.937	224.789	224.916	1.6	.1	.2	.1	.1
Other food away from home ^{1 2}326	156.990	157.517	2.7	.3	.0	.0	.3
Alcoholic beverages	1.056	222.082	222.401	1.5	.1	.2	.0	-.1
Housing	41.960	215.523	215.925	-.5	.2	.0	.0	-.3
Shelter	32.289	247.863	247.950	-.1	.0	-.2	.0	-.5
Rent of primary residence ³	5.966	248.999	249.144	.5	.1	-.1	.0	.0
Lodging away from home ²769	122.638	125.778	-5.8	2.6	-1.5	.1	-2.1
Owners' equivalent rent of residences ^{3 4}	25.206	256.727	256.591	.4	-.1	-.1	.0	-.1
Owners' equivalent rent of primary residence ^{3 4}	23.593	256.727	256.589	.4	-.1	-.1	.0	-.1
Tenants' and household insurance ^{1 2}347	123.812	124.360	3.3	.4	.0	1.3	.4
Fuels and utilities	5.081	208.760	211.381	-1.8	1.3	1.2	-.1	.5
Household energy	4.028	184.886	187.330	-3.5	1.3	1.5	-.2	.5
Fuel oil and other fuels ¹276	262.649	280.850	13.6	6.9	6.7	.9	6.9
Gas (piped) and electricity ³	3.752	188.724	190.439	-4.7	.9	1.1	-.3	.0
Water and sewer and trash collection services ²	1.052	165.204	166.857	6.1	1.0	.1	.4	.8
Household furnishings and operations	4.590	127.119	127.209	-1.2	.1	-.2	.0	-.1
Household operations ^{1 2}781	150.172	149.510	-.6	-.4	.0	.0	-.4
Apparel	3.695	119.357	116.678	1.7	-2.2	-.3	.4	-.1
Men's and boys' apparel903	110.633	109.762	-.9	-.8	-.4	-.2	.2
Women's and girls' apparel	1.580	108.304	103.353	2.7	-4.6	-.7	.9	.1
Infants' and toddlers' apparel196	112.695	113.248	.8	.5	-.5	-.2	1.0
Footwear721	128.492	127.205	4.0	-1.0	.5	.2	.3
Transportation	16.685	188.318	190.512	14.3	1.2	1.3	.7	1.3
Private transportation	15.497	183.766	186.308	15.2	1.4	1.2	.7	1.6
New and used motor vehicles ²	6.386	96.421	96.660	5.3	.2	.8	.3	.2
New vehicles	3.573	138.857	138.743	4.1	-.1	.5	-.2	-.5
Used cars and trucks	2.012	137.406	139.174	11.5	1.3	1.9	2.2	1.5
Motor fuel	4.525	224.730	234.106	49.5	4.2	2.8	1.7	4.8
Gasoline (all types)	4.337	224.260	233.727	51.3	4.2	2.7	2.3	4.4
Motor vehicle parts and equipment ¹401	134.781	135.277	1.4	.4	.4	.4	.4
Motor vehicle maintenance and repair ¹	1.167	245.417	245.567	1.9	.1	.0	.0	.1
Public transportation	1.187	245.203	241.058	2.8	-1.7	2.0	1.2	-1.8
Medical care	6.513	379.516	382.688	3.5	.8	.3	.1	.5
Medical care commodities ¹	1.611	308.221	310.494	3.5	.7	.1	-.1	.7
Medical care services	4.902	401.452	404.937	3.5	.9	.3	.2	.5
Professional services	2.796	321.827	324.397	2.8	.8	.2	.2	.5

See footnotes at end of table.

Table 1. Consumer Price Index for All Urban Consumers (CPI-U): U.S. city average, by expenditure category and commodity and service group-Continued

(1982-84=100, unless otherwise noted)

CPI-U Expenditure category	Relative importance, December 2009	Unadjusted indexes		Unadjusted percent change to Jan. 2010 from—		Seasonally adjusted percent change from—		
		Dec. 2009	Jan. 2010	Jan. 2009	Dec. 2009	Oct. to Nov.	Nov. to Dec.	Dec. to Jan.
Hospital and related services ³	1.619	581.968	588.631	6.8	1.1	0.7	0.6	0.4
Recreation ²	6.437	113.212	113.310	-.4	.1	-.1	-.3	-.1
Video and audio ²	1.894	99.873	99.940	-1.4	.1	.3	-.1	-.2
Education and communication ²	6.434	128.883	129.072	2.3	.1	.0	.2	.3
Education ²	3.035	195.672	195.850	4.6	.1	.3	.4	.3
Educational books and supplies200	496.580	500.551	6.9	.8	.7	.4	.4
Tuition, other school fees, and childcare	2.835	562.610	562.841	4.5	.0	.2	.4	.3
Communication ²	3.399	84.809	84.974	.1	.2	-.3	.1	.2
Information and information processing ^{1 2}	3.225	81.728	81.817	-.3	.1	-.4	.0	.1
Telephone services ^{1 2}	2.392	102.707	102.729	.8	.0	-.4	.2	.0
Information technology, hardware and services ^{1 5}833	9.423	9.457	-4.7	.4	-.4	-.5	.4
Personal computers and peripheral equipment ⁶246	77.960	78.323	-11.5	.5	.0	-.5	-.6
Other goods and services	3.483	377.330	377.652	7.8	.1	.4	.2	.1
Tobacco and smoking products ¹871	783.794	786.857	29.5	.4	1.0	.3	.4
Personal care	2.612	205.823	205.789	1.3	.0	.2	.1	-.1
Personal care products ¹688	162.275	161.627	-6	-.4	-.3	.3	-.4
Personal care services ¹642	228.343	228.629	1.3	.1	.0	.0	.1
Miscellaneous personal services	1.048	348.697	349.605	2.6	.3	.5	.2	.1
Commodity and service group								
Commodities	39.816	172.572	173.646	5.6	.6	.5	.3	.8
Food and beverages	14.795	218.049	219.223	-.2	.5	.1	.1	.2
Commodities less food and beverages	25.021	148.441	149.439	9.5	.7	.7	.4	1.1
Nondurables less food and beverages	15.044	185.689	187.484	15.1	1.0	1.3	.7	1.6
Apparel	3.695	119.357	116.678	1.7	-2.2	-.3	.4	-.1
Nondurables less food, beverages, and apparel	11.349	231.169	235.821	20.0	2.0	1.6	.8	2.3
Durables	9.978	111.477	111.731	2.5	.2	.3	.3	.0
Services	60.184	259.055	259.459	.7	.2	.1	.1	-.2
Rent of shelter ⁴	31.942	258.303	258.382	-.2	.0	-.1	.0	-.3
Tenants' and household insurance ^{1 2}347	123.812	124.360	3.3	.4	.0	1.3	.4
Gas (piped) and electricity ³	3.752	188.724	190.439	-4.7	.9	1.1	-.3	.0
Water and sewer and trash collection services ²	1.052	165.204	166.857	6.1	1.0	.1	.4	.8
Household operations ^{1 2}781	150.172	149.510	-6	-.4	.0	.0	-.4
Transportation services	6.060	256.014	255.216	3.3	-.3	.5	.3	-.3
Medical care services	4.902	401.452	404.937	3.5	.9	.3	.2	.5
Other services	11.347	306.436	306.916	2.1	.2	.1	.1	.2
Special indexes								
All items less food	86.262	215.703	216.362	3.1	.3	.3	.2	.2
All items less shelter	67.711	205.888	206.892	4.0	.5	.4	.2	.5
All items less medical care	93.487	207.860	208.499	2.6	.3	.2	.2	.1
Commodities less food	26.078	151.052	152.035	9.2	.7	.7	.4	1.1
Nondurables less food	16.100	187.864	189.578	14.0	.9	1.3	.6	1.6
Nondurables less food and apparel	12.405	229.250	233.498	18.1	1.9	1.6	.7	2.1
Nondurables	29.838	202.064	203.588	6.8	.8	.6	.3	.9
Services less rent of shelter ⁴	28.243	279.896	280.730	1.6	.3	.3	.2	.1
Services less medical care services	55.282	247.793	248.023	.4	.1	.1	.1	-.2
Energy	8.553	202.301	208.026	19.1	2.8	2.2	.8	2.8
All items less energy	91.447	219.048	219.287	1.2	.1	.0	.1	-.1
All items less food and energy	77.708	220.025	220.086	1.6	.0	.0	.1	-.1
Commodities less food and energy commodities	21.276	143.383	143.125	2.9	-.2	.2	.1	.1
Energy commodities	4.801	228.186	238.069	46.6	4.3	3.0	1.6	4.9
Services less energy services	56.432	266.237	266.519	1.0	.1	.0	.1	-.2
Purchasing power of the consumer dollar (1982-84=\$1.00)	-	\$.463	\$.461	-	-	-	-	-
Purchasing power of the consumer dollar (1967=\$1.00)	-	\$.155	\$.154	-	-	-	-	-

¹ Not seasonally adjusted.

² Indexes on a December 1997=100 base.

³ This index series was calculated using a Laspeyres estimator. All other item stratum index series were calculated using a geometric means estimator.

⁴ Indexes on a December 1982=100 base.

⁵ Indexes on a December 1988=100 base.

⁶ Indexes on a December 2007=100 base.

- Data not available.

NOTE: Index applies to a month as a whole, not to any specific date.

Table 2. Consumer Price Index for All Urban Consumers (CPI-U): Seasonally adjusted U.S. city average, by expenditure category and commodity and service group

(1982-84=100, unless otherwise noted)

CPI-U	Seasonally adjusted indexes				Seasonally adjusted annual rate percent change for					
					3 months ended—			6 months ended—		
	Oct. 2009	Nov. 2009	Dec. 2009	Jan. 2010	Apr. 2009	July 2009	Oct. 2009	Jan. 2010	July 2009	Jan. 2010
Expenditure category										
All items	216.357	216.859	217.224	217.587	1.6	3.7	3.0	2.3	2.7	2.6
Food and beverages	217.777	217.952	218.253	218.731	-1.4	-1.4	.1	1.8	-1.4	.9
Food	217.335	217.482	217.801	218.339	-1.5	-1.8	.0	1.9	-1.6	.9
Food at home	213.262	213.206	213.655	214.479	-4.9	-3.8	-1.4	2.3	-4.3	.5
Cereals and bakery products	251.701	251.806	252.805	251.452	-4.2	-1.1	-.1	-.4	-2.7	-.2
Meats, poultry, fish, and eggs	200.135	200.929	200.779	201.682	-4.1	-7.9	-3.6	3.1	-6.0	-3.3
Dairy and related products ¹	195.360	193.914	194.792	198.949	-21.8	-7.9	4.7	7.6	-15.1	6.1
Fruits and vegetables	268.008	268.326	269.428	272.854	.2	-3.0	-8.8	7.4	-1.4	-1.0
Nonalcoholic beverages and beverage materials	162.504	162.164	162.202	162.499	-1.1	-1.3	-.5	.0	-1.2	-.3
Other food at home	191.136	190.868	191.326	190.812	-2.5	-1.4	1.5	-.7	-2.0	.4
Sugar and sweets	197.934	198.960	199.524	198.862	-.6	-2.9	6.7	1.9	-1.8	4.2
Fats and oils	198.562	197.875	199.004	199.460	-6.8	-4.3	-3.4	1.8	-5.6	-.8
Other foods	205.588	205.086	205.455	204.762	-2.2	-.6	1.3	-1.6	-1.4	-.2
Other miscellaneous foods ^{1 2}	122.112	121.263	122.422	121.564	-3.6	-2.9	.4	-1.8	-3.2	-.7
Food away from home ¹	224.224	224.633	224.789	224.916	2.9	.8	1.6	1.2	1.8	1.4
Other food away from home ^{1 2}	157.056	157.027	156.990	157.517	4.5	3.8	1.2	1.2	4.2	1.2
Alcoholic beverages	222.193	222.717	222.792	222.488	.3	2.9	2.2	.5	1.6	1.4
Housing	216.926	216.881	216.880	216.185	-.5	-1.0	.4	-1.4	-.7	-.5
Shelter	249.644	249.173	249.216	248.029	.8	.1	.3	-2.6	.5	-1.1
Rent of primary residence ³	248.946	248.786	248.788	248.885	1.9	.6	-.5	-.1	1.2	-.3
Lodging away from home ²	134.293	132.339	132.480	129.698	-10.4	-6.5	5.4	-13.0	-8.4	-4.2
Owners' equivalent rent of residences ^{3 4}	256.952	256.721	256.708	256.509	1.8	.7	-.1	-.7	1.2	-.4
Owners' equivalent rent of primary residence ^{3 4}	256.952	256.721	256.708	256.507	1.8	.7	-.1	-.7	1.2	-.4
Tenants' and household insurance ^{1 2}	122.184	122.243	123.812	124.360	.9	2.1	3.0	7.3	1.5	5.1
Fuels and utilities	209.288	211.881	211.685	212.757	-9.5	-8.0	4.9	6.8	-8.8	5.8
Household energy	185.670	188.492	188.120	188.982	-12.5	-11.1	4.3	7.3	-11.8	5.8
Fuel oil and other fuels ¹	243.936	260.250	262.649	280.850	-27.5	3.7	26.1	75.7	-13.3	48.9
Gas (piped) and electricity ³	190.640	192.829	192.284	192.250	-11.4	-12.1	3.0	3.4	-11.7	3.2
Water and sewer and trash collection services ²	164.449	164.557	165.138	166.463	5.6	6.6	7.2	5.0	6.1	6.1
Household furnishings and operations	127.905	127.605	127.577	127.392	1.3	-.7	-3.8	-1.6	.3	-2.7
Household operations ^{1 2}	150.184	150.135	150.172	149.510	1.0	-2.2	.5	-1.8	-.6	-.6
Apparel	120.555	120.247	120.684	120.613	3.3	3.8	-.3	.2	3.6	-.1
Men's and boys' apparel	112.792	112.382	112.109	112.296	1.6	-1.8	-1.8	-1.7	-.1	-1.8
Women's and girls' apparel	108.890	108.114	109.085	109.196	2.7	8.3	-1.1	1.1	5.5	.0
Infants' and toddlers' apparel	114.531	113.941	113.668	114.757	3.7	1.5	-2.6	.8	2.6	-.9
Footwear	127.996	128.697	128.979	129.343	5.1	5.3	1.1	4.3	5.2	2.7
Transportation	187.266	189.647	191.018	193.593	4.8	25.3	15.6	14.2	14.6	14.9
Private transportation	182.858	185.085	186.356	189.316	6.2	27.1	15.6	14.9	16.2	15.2
New and used motor vehicles ²	95.274	95.996	96.255	96.422	3.8	5.1	7.8	4.9	4.5	6.4
New vehicles	137.833	138.532	138.214	137.470	7.5	7.4	2.9	-1.0	7.4	.9
Used cars and trucks	132.498	135.010	137.922	139.990	-11.8	7.6	30.5	24.6	-2.6	27.5
Motor fuel	226.620	232.878	236.762	248.088	13.7	120.8	38.5	43.6	58.4	41.1
Gasoline (all types)	225.974	232.144	237.449	247.897	19.0	121.1	37.5	44.8	62.2	41.1
Motor vehicle parts and equipment ¹	133.650	134.234	134.781	135.277	3.7	-2.7	-.2	5.0	.5	2.3
Motor vehicle maintenance and repair ¹	245.393	245.511	245.417	245.567	2.6	.6	3.9	.3	1.6	2.1
Public transportation	241.593	246.516	249.551	245.058	-11.8	3.1	16.3	5.9	-4.7	11.0
Medical care	379.184	380.212	380.732	382.737	3.9	2.6	3.7	3.8	3.2	3.7
Medical care commodities ¹	308.379	308.546	308.221	310.494	5.4	.3	5.6	2.8	2.8	4.2
Medical care services	400.912	402.295	403.177	405.006	3.4	3.3	3.0	4.1	3.3	3.6
Professional services	321.936	322.528	323.045	324.784	1.0	3.8	2.7	3.6	2.4	3.1

See footnotes at end of table.

Table 2. Consumer Price Index for All Urban Consumers (CPI-U): Seasonally adjusted U.S. city average, by expenditure category and commodity and service group-Continued

(1982-84=100, unless otherwise noted)

CPI-U	Seasonally adjusted indexes				Seasonally adjusted annual rate percent change for					
					3 months ended—			6 months ended—		
	Oct. 2009	Nov. 2009	Dec. 2009	Jan. 2010	Apr. 2009	July 2009	Oct. 2009	Jan. 2010	July 2009	Jan. 2010
Expenditure category										
Hospital and related services ³	577.468	581.662	585.044	587.561	9.0	5.2	5.8	7.2	7.1	6.5
Recreation ²	114.130	113.968	113.598	113.524	.2	1.6	-1.4	-2.1	.9	-1.8
Video and audio ²	100.282	100.563	100.440	100.255	.4	-6	-5.1	-.1	-.1	-2.6
Education and communication ²	128.286	128.255	128.528	128.872	2.7	2.9	1.9	1.8	2.8	1.8
Education ²	193.324	193.869	194.587	195.209	5.2	5.6	3.8	4.0	5.4	3.9
Educational books and supplies	491.256	494.815	496.737	498.880	6.3	9.7	5.1	6.4	8.0	5.7
Tuition, other school fees, and childcare	555.802	557.176	559.232	561.001	5.2	5.3	3.7	3.8	5.2	3.7
Communication ²	85.051	84.770	84.815	84.974	.3	.3	.0	-.4	.3	-.2
Information and information processing ^{1 2}	81.978	81.688	81.728	81.817	.3	-.5	-.1	-.8	-.1	-.4
Telephone services ^{1 2}	102.891	102.528	102.707	102.729	.8	2.3	1.0	-.6	1.5	.2
Information technology, hardware and services ^{1 5}	9.501	9.467	9.423	9.457	-1.5	-10.8	-4.2	-1.8	-6.3	-3.0
Personal computers and peripheral equipment ⁶	78.765	78.784	78.356	77.925	-14.9	-15.5	-11.0	-4.2	-15.2	-7.7
Other goods and services	375.382	376.960	377.651	377.853	24.2	3.4	2.5	2.7	13.3	2.6
Tobacco and smoking products ¹	773.758	781.538	783.794	786.857	123.2	11.5	5.8	6.9	57.8	6.4
Personal care	205.360	205.770	206.065	205.935	2.4	.6	1.3	1.1	1.5	1.2
Personal care products ¹	162.257	161.753	162.275	161.627	3.0	-2.2	-1.5	-1.5	.4	-1.5
Personal care services ¹	228.465	228.358	228.343	228.629	3.9	-1.0	2.0	.3	1.4	1.2
Miscellaneous personal services	347.462	349.284	349.935	350.113	1.3	3.1	3.1	3.1	2.2	3.1
Commodity and service group										
Commodities	172.488	173.284	173.830	175.196	3.3	9.0	4.9	6.4	6.1	5.7
Food and beverages	217.777	217.952	218.253	218.731	-1.4	-1.4	.1	1.8	-1.4	.9
Commodities less food and beverages	148.437	149.463	150.092	151.759	6.5	16.1	8.0	9.3	11.2	8.6
Nondurables less food and beverages	186.035	188.385	189.796	192.765	6.3	27.9	11.9	15.3	16.6	13.6
Apparel	120.555	120.247	120.684	120.613	3.3	3.8	-.3	.2	3.6	-.1
Nondurables less food, beverages, and apparel	231.094	234.760	236.606	241.982	7.6	38.2	16.0	20.2	22.0	18.1
Durables	110.891	111.269	111.607	111.565	1.3	2.3	3.9	2.5	1.8	3.2
Services	259.970	260.129	260.290	259.716	.5	.3	1.7	-.4	.4	.6
Rent of shelter ⁴	260.220	259.852	259.963	259.168	.5	-.1	.6	-1.6	.2	-.5
Tenants' and household insurance ^{1 2}	122.184	122.243	123.812	124.360	.9	2.1	3.0	7.3	1.5	5.1
Gas (piped) and electricity ³	190.640	192.829	192.284	192.250	-11.4	-12.1	3.0	3.4	-11.7	3.2
Water and sewer and trash collection services ²	164.449	164.557	165.138	166.463	5.6	6.6	7.2	5.0	6.1	6.1
Household operations ^{1 2}	150.184	150.135	150.172	149.510	1.0	-2.2	.5	-1.8	-.6	-.6
Transportation services	254.411	255.733	256.494	255.735	2.6	1.2	7.3	2.1	1.9	4.7
Medical care services	400.912	402.295	403.177	405.006	3.4	3.3	3.0	4.1	3.3	3.6
Other services	305.987	306.204	306.521	306.985	1.9	3.6	1.6	1.3	2.7	1.5
Special indexes										
All items less food	216.227	216.787	217.160	217.489	2.1	4.7	3.5	2.4	3.4	2.9
All items less shelter	205.753	206.649	207.147	208.128	2.0	5.6	4.3	4.7	3.8	4.5
All items less medical care	208.293	208.770	209.126	209.424	1.5	3.8	2.9	2.2	2.6	2.6
Commodities less food	151.051	152.066	152.681	154.302	6.2	15.5	7.7	8.9	10.8	8.3
Nondurables less food	187.923	190.304	191.439	194.517	5.6	26.5	10.2	14.8	15.6	12.5
Nondurables less food and apparel	228.887	232.549	234.233	239.081	6.7	34.3	14.1	19.0	19.7	16.5
Nondurables	202.443	203.673	204.280	206.144	2.4	10.3	7.1	7.5	6.3	7.3
Services less rent of shelter ⁴	279.534	280.508	281.171	281.417	.1	.1	3.6	2.7	.1	3.1
Services less medical care services	248.746	248.944	249.198	248.690	.2	-.3	1.8	-.1	.0	.9
Energy	203.606	208.041	209.699	215.536	-1.6	38.1	21.0	25.6	16.5	23.2
All items less energy	219.365	219.462	219.695	219.524	1.9	1.1	1.4	.3	1.5	.9
All items less food and energy	220.459	220.546	220.764	220.463	2.5	1.7	1.7	.0	2.1	.8
Commodities less food and energy commodities	143.257	143.513	143.702	143.863	5.4	2.8	2.0	1.7	4.1	1.8
Energy commodities	229.002	235.831	239.662	251.449	10.0	110.6	37.8	45.4	52.2	41.5
Services less energy services	267.055	267.018	267.248	266.630	1.5	1.3	1.6	-.6	1.4	.5

¹ Not seasonally adjusted.

² Indexes on a December 1997=100 base.

³ This index series was calculated using a Laspeyres estimator. All other item stratum index series were calculated using a geometric means estimator.

⁴ Indexes on a December 1982=100 base.

⁵ Indexes on a December 1988=100 base.

⁶ Indexes on a December 2007=100 base.

NOTE: Index applies to a month as a whole, not to any specific date.

Table 3. Consumer Price Index for All Urban Consumers (CPI-U): Selected areas, all items index

(1982-84=100, unless otherwise noted)

CPI-U	Pricing schedule 1	All items									
		Indexes				Percent change to Jan.2010 from—			Percent change to Dec.2009 from—		
		Oct. 2009	Nov. 2009	Dec. 2009	Jan. 2010	Jan. 2009	Nov. 2009	Dec. 2009	Dec. 2008	Oct. 2009	Nov. 2009
U.S. city average	M	216.177	216.330	215.949	216.687	2.6	0.2	0.3	2.7	-0.1	-0.2
Region and area size²											
Northeast urban	M	231.304	231.708	231.462	232.294	3.0	.3	.4	2.8	.1	-1
Size A - More than 1,500,000	M	233.415	233.785	233.475	234.109	2.7	.1	.3	2.5	.0	-1
Size B/C - 50,000 to 1,500,000 ³	M	137.348	137.646	137.597	138.416	3.8	.6	.6	3.6	.2	.0
Midwest urban	M	205.706	206.247	205.613	206.564	2.9	.2	.5	3.0	.0	-3
Size A - More than 1,500,000	M	206.625	207.277	206.399	207.325	2.6	.0	.4	3.0	-1	-4
Size B/C - 50,000 to 1,500,000 ³	M	131.724	131.952	131.742	132.417	2.9	.4	.5	2.9	.0	-2
Size D - Nonmetropolitan (less than 50,000)	M	202.499	203.047	202.738	203.490	3.9	.2	.4	3.8	.1	-2
South urban	M	209.292	209.738	209.476	210.056	2.8	.2	.3	2.9	.1	-1
Size A - More than 1,500,000	M	211.152	211.424	210.971	211.762	2.3	.2	.4	2.2	-1	-2
Size B/C - 50,000 to 1,500,000 ³	M	133.035	133.342	133.252	133.517	3.0	.1	.2	3.2	.2	-1
Size D - Nonmetropolitan (less than 50,000)	M	212.423	213.372	213.159	213.873	3.9	.2	.3	4.3	.3	-1
West urban	M	220.447	219.728	219.307	219.989	1.9	.1	.3	2.2	-5	-2
Size A - More than 1,500,000	M	224.372	223.489	223.058	223.852	1.8	.2	.4	2.0	-6	-2
Size B/C - 50,000 to 1,500,000 ³	M	133.618	133.335	133.132	133.366	2.1	.0	.2	2.6	-4	-2
Size classes											
A ⁴	M	197.670	197.697	197.246	197.948	2.3	.1	.4	2.4	-2	-2
B/C ³	M	133.489	133.663	133.535	133.954	2.9	.2	.3	3.1	.0	-1
D	M	209.139	209.567	209.192	209.984	3.2	.2	.4	3.4	.0	-2
Selected local areas⁵											
Chicago-Gary-Kenosha, IL-IN-WI	M	211.708	212.206	211.185	212.104	2.2	.0	.4	2.5	-2	-5
Los Angeles-Riverside-Orange County, CA ...	M	225.264	224.317	223.643	224.610	1.8	.1	.4	1.8	-7	-3
New York-Northern N.J.-Long Island, NY-NJ-CT-PA	M	238.380	238.777	238.427	238.970	2.4	.1	.2	2.3	.0	-1
Boston-Brockton-Nashua, MA-NH-ME-CT	1	-	236.589	-	237.266	2.8	.3	-	-	-	-
Cleveland-Akron, OH	1	-	201.471	-	203.037	2.4	.8	-	-	-	-
Dallas-Fort Worth, TX	1	-	201.958	-	202.106	1.8	.1	-	-	-	-
Washington-Baltimore, DC-MD-VA-WV ⁶	1	-	140.718	-	141.124	2.6	.3	-	-	-	-
Atlanta, GA	2	201.068	-	200.456	-	-	-	-	1.8	-3	-
Detroit-Ann Arbor-Flint, MI	2	205.079	-	203.880	-	-	-	-	3.0	-6	-
Houston-Galveston-Brazoria, TX	2	191.608	-	190.932	-	-	-	-	2.7	-4	-
Miami-Fort Lauderdale, FL	2	222.416	-	222.943	-	-	-	-	2.1	.2	-
Philadelphia-Wilmington-Atlantic City, PA-NJ-DE-MD	2	224.787	-	224.800	-	-	-	-	3.0	.0	-
San Francisco-Oakland-San Jose, CA	2	226.051	-	224.239	-	-	-	-	2.6	-8	-
Seattle-Tacoma-Bremerton, WA	2	226.277	-	225.596	-	-	-	-	1.4	-3	-

¹ Foods, fuels, and several other items priced every month in all areas; most other goods and services priced as indicated:

M - Every month.

1 - January, March, May, July, September, and November.

2 - February, April, June, August, October, and December.

² Regions defined as the four Census regions. See technical notes.

³ Indexes on a December 1996=100 base.

⁴ Indexes on a December 1986=100 base.

⁵ In addition, the following metropolitan areas are published semiannually and appear in Tables 34 and 39 of the January and July issues of the CPI Detailed Report: Anchorage, AK; Cincinnati-Hamilton, OH-KY-IN; Denver-Boulder-Greeley, CO; Honolulu, HI; Kansas City, MO-KS; Milwaukee-Racine, WI; Minneapolis-St. Paul, MN-WI; Phoenix-Mesa, AZ; Pittsburgh, PA; Portland-Salem, OR-WA; St. Louis, MO-IL; San Diego, CA;

Tampa-St. Petersburg-Clearwater, FL.

⁶ Indexes on a November 1996=100 base.

- Data not available.

NOTE: Local area indexes are byproducts of the national CPI program. Each local index has a smaller sample size than the national index and is, therefore, subject to substantially more sampling and other measurement error. As a result, local area indexes show greater volatility than the national index, although their long-term trends are similar. Therefore, the Bureau of Labor Statistics strongly urges users to consider adopting the national average CPI for use in their escalator clauses.

NOTE: Index applies to a month as a whole, not to any specific date.

Table 4. Consumer Price Index for Urban Wage Earners and Clerical Workers (CPI-W): U.S. city average, by expenditure category and commodity and service group

(1982-84=100, unless otherwise noted)

CPI-W Expenditure category	Relative importance, December 2009	Unadjusted indexes		Unadjusted percent change to Jan. 2010 from—		Seasonally adjusted percent change from—		
		Dec. 2009	Jan. 2010	Jan. 2009	Dec. 2009	Oct. to Nov.	Nov. to Dec.	Dec. to Jan.
All items	100.000	211.703	212.568	3.3	0.4	0.2	0.2	0.3
All items (1967=100)	-	630.600	633.176	-	-	-	-	-
Food and beverages	16.425	217.186	218.354	-.4	.5	.1	.1	.2
Food	15.333	216.679	217.900	-.5	.6	.1	.2	.2
Food at home	8.900	212.041	214.049	-2.0	.9	-1.1	.2	.4
Cereals and bakery products	1.257	251.570	251.195	-1.5	-.1	.1	.3	-.6
Meats, poultry, fish, and eggs	2.144	200.623	201.411	-3.2	.4	-.3	.0	.4
Dairy and related products ¹898	193.546	197.663	-5.2	2.1	-7.7	.4	2.1
Fruits and vegetables	1.223	270.279	276.025	-1.4	2.1	.1	.5	1.2
Nonalcoholic beverages and beverage materials	1.123	160.745	163.439	-.7	1.7	-.3	.1	.2
Other food at home	2.254	189.197	190.354	-.7	.6	-2.3	.3	-.2
Sugar and sweets321	197.258	198.694	1.4	.7	.6	.1	-.2
Fats and oils259	198.165	200.741	-3.2	1.3	-.4	.6	.2
Other foods	1.674	203.972	204.957	-.7	.5	-.3	.2	-.3
Other miscellaneous foods ^{1 2}472	122.796	122.051	-1.9	-.6	-.8	.9	-.6
Food away from home ¹	6.433	224.940	225.015	1.6	.0	.2	.1	.0
Other food away from home ^{1 2}321	156.830	157.670	2.8	.5	.0	.0	.5
Alcoholic beverages	1.092	223.168	223.565	1.9	.2	.5	.0	-.1
Housing	39.753	212.142	212.529	-.3	.2	.0	.0	-.1
Shelter	30.171	241.991	242.019	.2	.0	-.1	.0	-.3
Rent of primary residence ³	8.476	247.465	247.574	.4	.0	-.1	.0	.0
Lodging away from home ²432	124.222	127.150	-5.3	2.4	-1.2	-.1	-2.0
Owners' equivalent rent of residences ^{3 4}	20.959	232.603	232.463	.4	-.1	-.1	.0	-.1
Owners' equivalent rent of primary residence ^{3 4}	20.218	232.603	232.463	.4	-.1	-.1	.0	-.1
Tenants' and household insurance ^{1 2}303	124.415	125.299	3.8	.7	.1	1.3	.7
Fuels and utilities	5.632	207.329	209.691	-2.0	1.1	1.1	-.1	.6
Household energy	4.517	182.701	184.843	-3.7	1.2	1.3	-.3	.6
Fuel oil and other fuels ¹271	265.130	284.061	12.7	7.1	6.6	1.1	7.1
Gas (piped) and electricity ³	4.246	187.125	188.607	-4.6	.8	1.0	-.3	.2
Water and sewer and trash collection services ²	1.114	165.808	167.473	6.2	1.0	.2	.4	.8
Household furnishings and operations	3.950	123.187	123.339	-.9	.1	-.2	.0	-.1
Household operations ^{1 2}369	152.486	151.499	-.5	-.6	-.4	-.2	-.6
Apparel	3.788	118.984	116.310	1.2	-2.2	-.3	.2	.0
Men's and boys' apparel945	110.856	109.893	-1.8	-.9	-.5	-.5	.0
Women's and girls' apparel	1.568	107.819	102.860	2.1	-4.6	-.7	.9	.1
Infants' and toddlers' apparel285	115.754	117.028	2.0	1.1	-.4	-.1	1.6
Footwear781	128.637	127.267	3.7	-1.1	.3	.2	.1
Transportation	18.647	186.839	189.544	16.1	1.4	1.1	1.1	1.7
Private transportation	17.881	183.565	186.457	16.7	1.6	1.0	1.0	1.8
New and used motor vehicles ²	6.952	95.072	95.464	6.3	.4	1.0	.6	.3
New vehicles	3.385	139.962	139.857	4.0	-.1	.5	-.2	-.5
Used cars and trucks	2.944	138.242	140.023	11.6	1.3	1.9	2.2	1.5
Motor fuel	5.774	225.584	235.083	49.5	4.2	1.7	2.2	4.9
Gasoline (all types)	5.530	225.223	234.825	51.3	4.3	2.9	2.4	4.4
Motor vehicle parts and equipment ¹472	134.892	135.383	1.3	.4	.4	.4	.4
Motor vehicle maintenance and repair ¹	1.180	247.812	247.975	1.8	.1	.1	-.1	.1
Public transportation766	243.453	239.739	3.1	-1.5	1.8	1.3	-1.8
Medical care	5.261	380.302	383.443	3.6	.8	.3	.2	.5
Medical care commodities ¹	1.301	299.777	301.890	3.5	.7	.1	-.1	.7
Medical care services	3.961	403.791	407.286	3.7	.9	.4	.3	.5
Professional services	2.195	324.763	327.439	2.9	.8	.2	.2	.6

See footnotes at end of table.

Table 4. Consumer Price Index for Urban Wage Earners and Clerical Workers (CPI-W): U.S. city average, by expenditure category and commodity and service group-Continued

(1982-84=100, unless otherwise noted)

CPI-W Expenditure category	Relative importance, December 2009	Unadjusted indexes		Unadjusted percent change to Jan. 2010 from—		Seasonally adjusted percent change from—			
		Dec. 2009	Jan. 2010	Jan. 2009	Dec. 2009	Oct. to Nov.	Nov. to Dec.	Dec. to Jan.	
Hospital and related services ³	1.339	580.567	587.101	7.2	1.1	0.8	0.6	0.4	
Recreation ²	6.031	109.851	109.964	-.6	.1	-.1	-.3	.0	
Video and audio ²	2.046	100.400	100.473	-1.0	.1	.2	-.1	-.1	
Education and communication ²	6.175	124.156	124.293	1.9	.1	-.1	.2	.2	
Education ²	2.327	192.760	193.049	4.6	.1	.4	.3	.3	
Educational books and supplies196	499.478	503.416	6.9	.8	.7	.4	.4	
Tuition, other school fees, and childcare	2.131	542.036	542.531	4.3	.1	.3	.3	.3	
Communication ²	3.848	87.541	87.617	.0	.1	-.4	.1	.1	
Information and information processing ^{1 2}	3.715	85.404	85.433	-.2	.0	-.4	.1	.0	
Telephone services ^{1 2}	2.906	102.585	102.504	.6	-.1	-.4	-.2	-.1	
Information technology, hardware and services ^{1 5}809	9.935	9.978	-4.2	.4	-.3	-.3	.4	
Personal computers and peripheral equipment ⁶225	77.821	78.278	-11.2	.6	.1	-.6	-.3	
Other goods and services	3.919	403.970	404.632	11.1	.2	.5	.2	.1	
Tobacco and smoking products ¹	1.397	789.173	791.959	29.7	.4	1.0	.3	.4	
Personal care	2.522	203.454	203.575	1.2	.1	.1	.2	.0	
Personal care products ¹733	162.231	161.689	-.6	-.3	-.3	.3	-.3	
Personal care services ¹577	228.614	228.793	1.3	.1	.0	.0	.1	
Miscellaneous personal services	1.019	349.851	351.329	2.4	.4	.4	.2	.3	
Commodity and service group									
Commodities	43.589	175.127	176.413	6.8	.7	.4	.5	.9	
Food and beverages	16.425	217.186	218.354	-.4	.5	.1	.1	.2	
Commodities less food and beverages	27.164	152.532	153.834	11.5	.9	.6	.7	1.3	
Nondurables less food and beverages	16.703	193.667	195.981	17.6	1.2	1.5	.8	1.9	
Apparel	3.788	118.984	116.310	1.2	-2.2	-.3	.2	.0	
Nondurables less food, beverages, and apparel	12.915	244.413	249.801	23.4	2.2	1.6	.9	2.5	
Durables	10.461	112.165	112.511	3.5	.3	.5	.5	.1	
Services	56.411	254.519	254.918	.7	.2	.1	.0	-.1	
Rent of shelter ⁴	29.868	233.241	233.252	.1	.0	-.1	.0	-.2	
Tenants' and household insurance ^{1 2}303	124.415	125.299	3.8	.7	.1	1.3	.7	
Gas (piped) and electricity ³	4.246	187.125	188.607	-4.6	.8	1.0	-.3	.2	
Water and sewer and trash collection services ²	1.114	165.808	167.473	6.2	1.0	-.2	.4	.8	
Household operations ^{1 2}369	152.486	151.499	-.5	-.6	-.4	-.2	-.6	
Transportation services	5.918	256.007	255.577	3.5	-.2	.4	.3	-.2	
Medical care services	3.961	403.791	407.286	3.7	.9	.4	.3	.5	
Other services	10.631	293.470	293.972	1.9	.2	.0	.1	.2	
Special indexes									
All items less food	84.667	210.639	211.440	4.1	.4	.3	.3	.4	
All items less shelter	69.829	202.951	204.128	4.8	.6	.4	.3	.6	
All items less medical care	94.739	204.800	205.589	3.3	.4	.2	.2	.3	
Commodities less food	28.256	154.918	156.200	11.1	.8	.6	.6	1.3	
Nondurables less food	17.795	195.487	197.701	16.5	1.1	1.5	.8	1.8	
Nondurables less food and apparel	14.007	241.513	246.455	21.5	2.0	1.7	.8	2.3	
Nondurables	33.128	205.823	207.611	8.0	.9	.4	.4	1.1	
Services less rent of shelter ⁴	26.543	247.174	247.985	1.5	.3	.3	.2	.1	
Services less medical care services	52.450	243.838	244.090	.5	.1	.1	.1	-.1	
Energy	10.291	202.398	208.222	20.7	2.9	1.6	1.1	3.1	
All items less energy	89.709	213.780	214.048	1.6	.1	.1	.1	.0	
All items less food and energy	74.376	213.572	213.647	2.0	.0	.1	.1	.0	
Commodities less food and energy commodities	22.211	145.253	145.065	3.9	-.1	.3	.3	.2	
Energy commodities	6.045	228.303	238.217	47.2	4.3	1.9	2.1	5.0	
Services less energy services	52.165	261.871	262.146	1.2	.1	.0	.1	-.1	
Purchasing power of the consumer dollar (1982-84=\$1.00)	-	\$.472	\$.470	-	-	-	-	-	
Purchasing power of the consumer dollar (1967=\$1.00)	-	\$.159	\$.158	-	-	-	-	-	

¹ Not seasonally adjusted.

² Indexes on a December 1997=100 base.

³ This index series was calculated using a Laspeyres estimator. All other item stratum index series were calculated using a geometric means estimator.

⁴ Indexes on a December 1984=100 base

⁵ Indexes on a December 1988=100 base.

⁶ Indexes on a December 2007=100 base.

- Data not available.

NOTE: Index applies to a month as a whole, not to any specific date.

Table 5. Consumer Price Index for Urban Wage Earners and Clerical Workers (CPI-W): Seasonally adjusted U.S. city average, by expenditure category and commodity and service group

(1982-84=100, unless otherwise noted)

Expenditure category	Seasonally adjusted indexes				Seasonally adjusted annual rate percent change for					
					3 months ended—			6 months ended—		
	Oct. 2009	Nov. 2009	Dec. 2009	Jan. 2010	Apr. 2009	July 2009	Oct. 2009	Jan. 2010	July 2009	Jan. 2010
All items	211.900	212.417	212.920	213.638	1.9	4.6	3.9	3.3	3.2	3.6
Food and beverages	216.932	217.109	217.426	217.876	-1.5	-1.6	.1	1.8	-1.6	.9
Food	216.437	216.553	216.887	217.376	-1.6	-2.0	.0	1.7	-1.8	.8
Food at home	212.024	211.914	212.400	213.166	-4.6	-4.1	-1.4	2.2	-4.4	.4
Cereals and bakery products	252.390	252.586	253.427	251.835	-3.9	-1.4	.1	-9	-2.6	-4
Meats, poultry, fish, and eggs	199.745	200.374	200.365	201.172	-3.4	-8.5	-3.5	2.9	-6.0	-3
Dairy and related products ¹	194.120	192.695	193.546	197.663	-22.4	-7.8	5.0	7.5	-15.4	6.2
Fruits and vegetables	265.483	265.811	267.011	270.176	.1	-2.8	-9.3	7.3	-1.3	-1.4
Nonalcoholic beverages and beverage materials	162.071	161.582	161.738	162.068	-7	-1.4	-.5	.0	-1.0	-3
Other food at home	190.441	190.110	190.619	190.215	-2.6	-1.5	1.6	-.5	-2.0	.5
Sugar and sweets	196.665	197.888	198.163	197.745	.3	-3.1	6.6	2.2	-1.4	4.4
Fats and oils	199.426	198.650	199.828	200.194	-6.6	-4.5	-3.1	1.5	-5.6	-8
Other foods	205.693	205.097	205.590	205.030	-2.4	-.6	1.4	-1.3	-1.5	.1
Other miscellaneous foods ^{1 2}	122.676	121.647	122.796	122.051	-4.3	-3.2	1.8	-2.0	-3.8	-1
Food away from home ¹	224.382	224.815	224.940	225.015	2.7	.8	1.8	1.1	1.7	1.4
Other food away from home ^{1 2}	156.909	156.853	156.830	157.670	2.7	6.6	.0	2.0	4.6	1.0
Alcoholic beverages	222.729	223.819	223.876	223.748	-3	4.1	1.9	1.8	1.9	1.9
Housing	213.046	213.130	213.065	212.818	-.5	-.8	.4	-.4	-.6	.0
Shelter	242.937	242.620	242.592	241.969	1.3	.5	.1	-1.6	.9	-.8
Rent of primary residence ³	247.485	247.276	247.237	247.305	1.7	.6	-.6	-.3	1.1	-.4
Lodging away from home ²	135.406	133.804	133.606	130.907	-9.5	-5.2	5.4	-12.6	-7.4	-4.1
Owners' equivalent rent of residences ^{3 4}	232.841	232.633	232.585	232.351	1.8	.8	.0	-.8	1.3	-.4
Owners' equivalent rent of primary residence ^{3 4}	232.841	232.633	232.585	232.351	1.8	.8	.0	-.8	1.3	-.4
Tenants' and household insurance ^{1 2}	122.761	122.830	124.415	125.299	1.2	2.3	3.3	8.5	1.7	5.9
Fuels and utilities	208.224	210.569	210.281	211.617	-10.4	-7.5	4.8	6.7	-9.0	5.8
Household energy	183.934	186.409	185.937	187.075	-13.5	-10.4	4.4	7.0	-12.0	5.7
Fuel oil and other fuels ¹	246.153	262.340	265.130	284.061	-28.1	1.6	24.5	77.3	-14.5	48.6
Gas (piped) and electricity ³	189.336	191.296	190.655	191.039	-12.6	-11.0	3.3	3.6	-11.8	3.5
Water and sewer and trash collection services ²	164.766	165.035	165.662	167.045	5.6	6.7	6.8	5.6	6.1	6.2
Household furnishings and operations	124.040	123.776	123.744	123.590	1.6	-.8	-2.9	-1.4	.4	-2.2
Household operations ^{1 2}	153.368	152.747	152.486	151.499	1.9	-1.0	2.1	-4.8	.4	-1.4
Apparel	120.250	119.871	120.151	120.099	1.9	4.3	-.7	-.5	3.1	-.6
Men's and boys' apparel	113.463	112.900	112.285	112.252	.5	-1.1	-2.3	-4.2	-.3	-3.3
Women's and girls' apparel	108.287	107.522	108.442	108.554	.2	8.6	-1.3	1.0	4.3	-.1
Infants' and toddlers' apparel	117.191	116.678	116.548	118.441	4.8	2.4	-3.5	4.3	3.6	.3
Footwear	128.423	128.856	129.173	129.256	5.5	5.4	1.3	2.6	5.4	1.9
Transportation	185.991	187.971	189.949	193.144	3.8	27.8	20.1	16.3	15.2	18.2
Private transportation	182.797	184.689	186.609	190.031	4.5	29.0	20.3	16.8	16.1	18.5
New and used motor vehicles ²	93.524	94.438	95.030	95.343	.2	5.8	12.0	8.0	2.9	10.0
New vehicles	138.977	139.664	139.358	138.596	6.8	7.3	3.1	-1.1	7.1	1.0
Used cars and trucks	133.282	135.844	138.813	140.866	-11.7	7.7	30.7	24.8	-2.5	27.7
Motor fuel	228.998	232.924	237.946	249.602	12.7	114.8	46.2	41.1	55.6	43.6
Gasoline (all types)	226.694	233.205	238.841	249.318	18.4	120.3	37.4	46.3	61.5	41.8
Motor vehicle parts and equipment ¹	133.764	134.346	134.892	135.383	2.9	-2.4	-.1	4.9	.2	2.4
Motor vehicle maintenance and repair ¹	247.811	247.972	247.812	247.975	2.6	.4	4.0	.3	1.5	2.1
Public transportation	240.341	244.557	247.857	243.274	-10.6	3.8	16.2	5.0	-3.7	10.5
Medical care	379.664	380.838	381.504	383.504	4.1	2.7	3.7	4.1	3.4	3.9
Medical care commodities ¹	299.742	299.972	299.777	301.890	5.6	.2	5.3	2.9	2.9	4.1
Medical care services	402.908	404.460	405.483	407.372	3.6	3.5	3.1	4.5	3.6	3.8
Professional services	324.781	325.379	325.933	327.911	1.4	3.6	2.8	3.9	2.5	3.4

See footnotes at end of table.

Table 5. Consumer Price Index for Urban Wage Earners and Clerical Workers (CPI-W): Seasonally adjusted U.S. city average, by expenditure category and commodity and service group-Continued

(1982-84=100, unless otherwise noted)

CPI-W	Seasonally adjusted indexes				Seasonally adjusted annual rate percent change for					
					3 months ended—			6 months ended—		
	Oct. 2009	Nov. 2009	Dec. 2009	Jan. 2010	Apr. 2009	July 2009	Oct. 2009	Jan. 2010	July 2009	Jan. 2010
Expenditure category										
Hospital and related services ³	574.800	579.659	583.389	585.929	9.2	5.8	5.8	8.0	7.5	6.9
Recreation ²	110.715	110.559	110.221	110.176	.6	1.2	-2.2	-1.9	.9	-2.1
Video and audio ²	100.784	101.026	100.934	100.793	.8	-2	-4.6	.0	.3	-2.3
Education and communication ²	123.757	123.678	123.911	124.142	2.2	2.6	1.5	1.3	2.4	1.4
Education ²	190.529	191.203	191.835	192.430	4.8	5.7	3.7	4.1	5.3	3.9
Educational books and supplies	494.149	497.706	499.745	501.581	6.5	10.4	4.5	6.2	8.4	5.3
Tuition, other school fees, and childcare	535.715	537.418	539.155	540.811	4.7	5.2	3.6	3.9	5.0	3.7
Communication ²	87.783	87.469	87.545	87.616	.3	.5	.0	-.8	.4	-.4
Information and information processing ^{1 2}	85.651	85.331	85.404	85.433	.3	.0	.0	-1.0	.2	-.5
Telephone services ^{1 2}	102.818	102.413	102.585	102.504	.7	2.1	.9	-1.2	1.4	-.2
Information technology, hardware and services ^{1 5}	9.995	9.969	9.935	9.978	-1.3	-10.1	-4.6	-.7	-5.8	-2.7
Personal computers and peripheral equipment ⁶	78.602	78.673	78.163	77.929	-15.2	-14.5	-11.3	-3.4	-14.9	-7.4
Other goods and services	401.378	403.360	404.292	404.888	36.9	4.4	2.9	3.5	19.5	3.2
Tobacco and smoking products ¹	778.650	786.541	789.173	791.959	125.2	11.2	5.7	7.0	58.3	6.3
Personal care	203.105	203.399	203.727	203.775	2.2	.1	1.0	1.3	1.2	1.2
Personal care products ¹	162.242	161.784	162.231	161.689	3.1	-2.8	-1.3	-1.4	.1	-1.3
Personal care services ¹	228.683	228.614	228.614	228.793	3.9	-1.1	2.1	.2	1.4	1.1
Miscellaneous personal services	348.814	350.374	351.092	352.090	1.0	2.3	2.6	3.8	1.6	3.2
Commodity and service group										
Commodities	175.057	175.805	176.635	178.233	3.6	10.2	7.1	7.5	6.9	7.3
Food and beverages	216.932	217.109	217.426	217.876	-1.5	-1.6	.1	1.8	-1.6	.9
Commodities less food and beverages	152.540	153.502	154.519	156.580	7.1	18.3	11.5	11.0	12.6	11.3
Nondurables less food and beverages	193.919	196.863	198.438	202.280	7.2	32.4	13.7	18.4	19.2	16.0
Apparel	120.250	119.871	120.151	120.099	1.9	4.3	-.7	-.5	3.1	-.6
Nondurables less food, beverages, and apparel	244.731	248.738	251.007	257.262	10.8	44.3	18.9	22.1	26.4	20.5
Durables	111.161	111.728	112.317	112.382	-.2	2.9	7.1	4.5	1.3	5.8
Services	255.036	255.245	255.350	255.157	.6	.5	1.5	.2	.5	.9
Rent of shelter ⁴	234.213	234.029	234.082	233.607	.8	.3	.4	-1.0	.6	-.3
Tenants' and household insurance ^{1 2}	122.761	122.830	124.415	125.299	1.2	2.3	3.3	8.5	1.7	5.9
Gas (piped) and electricity ³	189.336	191.296	190.655	191.039	-12.6	-11.0	3.3	3.6	-11.8	3.5
Water and sewer and trash collection services ²	164.766	165.035	165.662	167.045	5.6	6.7	6.8	5.6	6.1	6.2
Household operations ^{1 2}	153.368	152.747	152.486	151.499	1.9	-1.0	2.1	-4.8	.4	-1.4
Transportation services	254.466	255.455	256.122	255.588	3.4	1.7	6.9	1.8	2.5	4.3
Medical care services	402.908	404.460	405.483	407.372	3.6	3.5	3.1	4.5	3.6	3.8
Other services	293.210	293.299	293.681	294.133	1.7	3.3	1.2	1.3	2.5	1.3
Special indexes										
All items less food	210.912	211.499	212.031	212.790	2.5	5.9	4.7	3.6	4.2	4.1
All items less shelter	202.876	203.704	204.406	205.615	2.1	6.5	5.7	5.5	4.3	5.6
All items less medical care	205.020	205.514	206.007	206.680	1.7	4.7	3.9	3.3	3.2	3.6
Commodities less food	154.915	155.883	156.879	158.886	6.8	17.7	11.1	10.7	12.1	10.9
Nondurables less food	195.656	198.543	200.048	203.681	6.6	30.3	12.9	17.4	17.9	15.1
Nondurables less food and apparel	241.451	245.496	247.582	253.287	9.6	40.4	16.8	21.1	24.0	18.9
Nondurables	206.650	207.442	208.232	210.553	2.9	12.6	8.8	7.8	7.7	8.3
Services less rent of shelter ⁴	246.991	247.833	248.380	248.589	-.1	.1	3.4	2.6	.0	3.0
Services less medical care services	244.392	244.619	244.797	244.523	.3	.0	1.6	.2	.1	.9
Energy	204.717	207.897	210.195	216.617	-1.8	40.6	25.7	25.4	17.5	25.5
All items less energy	213.715	213.906	214.189	214.235	2.3	1.3	1.7	1.0	1.8	1.3
All items less food and energy	213.543	213.749	214.023	213.979	3.1	2.0	2.0	.8	2.6	1.4
Commodities less food and energy commodities	144.786	145.242	145.608	145.835	6.0	3.3	3.5	2.9	4.6	3.2
Energy commodities	230.861	235.286	240.247	252.253	9.9	107.3	45.2	42.5	51.0	43.8
Services less energy services	262.189	262.192	262.385	262.136	1.8	1.5	1.4	-.1	1.7	.7

¹ Not seasonally adjusted.

² Indexes on a December 1997=100 base.

³ This index series was calculated using a Laspeyres estimator. All other item stratum index series were calculated using a geometric means estimator.

⁴ Indexes on a December 1984=100 base

⁵ Indexes on a December 1988=100 base.

⁶ Indexes on a December 2007=100 base.

NOTE: Index applies to a month as a whole, not to any specific date.

Table 6. Consumer Price Index for Urban Wage Earners and Clerical Workers (CPI-W): Selected areas, all items index

(1982-84=100, unless otherwise noted)

CPI-W	Pricing schedule 1	All items									
		Indexes				Percent change to Jan.2010 from—			Percent change to Dec.2009 from—		
		Oct. 2009	Nov. 2009	Dec. 2009	Jan. 2010	Jan. 2009	Nov. 2009	Dec. 2009	Dec. 2008	Oct. 2009	Nov. 2009
U.S. city average	M	211.549	212.003	211.703	212.568	3.3	0.3	0.4	3.4	0.1	-0.1
Region and area size²											
Northeast urban	M	228.193	229.048	228.794	229.744	3.6	.3	.4	3.3	.3	-.1
Size A - More than 1,500,000	M	228.720	229.541	229.180	229.919	3.2	.2	.3	2.9	.2	-.2
Size B/C - 50,000 to 1,500,000 ³	M	137.959	138.527	138.522	139.364	4.5	.6	.6	4.2	.4	.0
Midwest urban	M	200.781	201.553	200.999	202.180	3.6	.3	.6	3.6	.1	-.3
Size A - More than 1,500,000	M	200.730	201.626	200.820	201.957	3.2	.2	.6	3.5	.0	-.4
Size B/C - 50,000 to 1,500,000 ³	M	131.420	131.823	131.639	132.502	3.7	.5	.7	3.6	.2	-.1
Size D - Nonmetropolitan (less than 50,000)	M	200.053	200.748	200.471	201.414	4.4	.3	.5	4.2	.2	-.1
South urban	M	206.121	206.859	206.716	207.405	3.7	.3	.3	3.7	.3	-.1
Size A - More than 1,500,000	M	208.577	209.161	208.788	209.619	3.0	.2	.4	2.8	.1	-.2
Size B/C - 50,000 to 1,500,000 ³	M	131.621	132.129	132.136	132.508	3.9	.3	.3	4.0	.4	.0
Size D - Nonmetropolitan (less than 50,000)	M	212.368	213.396	213.184	213.984	4.7	.3	.4	5.0	.4	-.1
West urban	M	214.718	214.228	213.919	214.664	2.5	.2	.3	2.8	-.4	-.1
Size A - More than 1,500,000	M	217.002	216.286	215.988	216.905	2.4	.3	.4	2.5	-.5	-.1
Size B/C - 50,000 to 1,500,000 ³	M	133.244	133.149	132.983	133.238	2.8	.1	.2	3.4	-.2	-.1
Size classes											
A ⁴	M	195.895	196.187	195.779	196.606	2.9	.2	.4	2.9	-.1	-.2
B/C ³	M	132.764	133.139	133.072	133.589	3.7	.3	.4	3.8	.2	-.1
D	M	207.120	207.739	207.417	208.297	4.1	.3	.4	4.1	.1	-.2
Selected local areas⁵											
Chicago-Gary-Kenosha, IL-IN-WI	M	204.511	205.136	204.196	205.529	2.7	.2	.7	2.9	-.2	-.5
Los Angeles-Riverside-Orange County, CA ...	M	217.474	216.618	216.233	217.290	2.3	.3	.5	2.5	-.6	-.2
New York-Northern N.J.-Long Island, NY-NJ-CT-PA	M	233.084	233.893	233.448	234.067	2.9	.1	.3	2.7	.2	-.2
Boston-Brockton-Nashua, MA-NH-ME-CT	1	-	236.859	-	237.999	3.4	.5	-	-	-	-
Cleveland-Akron, OH	1	-	192.871	-	194.529	3.0	.9	-	-	-	-
Dallas-Fort Worth, TX	1	-	205.297	-	205.456	3.0	.1	-	-	-	-
Washington-Baltimore, DC-MD-VA-WV ⁶	1	-	140.608	-	141.155	3.5	.4	-	-	-	-
Atlanta, GA	2	199.736	-	199.331	-	-	-	-	2.1	-.2	-
Detroit-Ann Arbor-Flint, MI	2	200.324	-	199.614	-	-	-	-	3.5	-.4	-
Houston-Galveston-Brazoria, TX	2	189.304	-	188.842	-	-	-	-	3.1	-.2	-
Miami-Fort Lauderdale, FL	2	220.358	-	221.067	-	-	-	-	2.4	.3	-
Philadelphia-Wilmington-Atlantic City, PA-NJ-DE-MD	2	224.573	-	224.732	-	-	-	-	3.3	.1	-
San Francisco-Oakland-San Jose, CA	2	221.708	-	220.121	-	-	-	-	3.0	-.7	-
Seattle-Tacoma-Bremerton, WA	2	221.339	-	220.905	-	-	-	-	2.1	-.2	-

¹ Foods, fuels, and several other items priced every month in all areas; most other goods and services priced as indicated:

M - Every month.

1 - January, March, May, July, September, and November.

2 - February, April, June, August, October, and December.

² Regions defined as the four Census regions. See technical notes.

³ Indexes on a December 1996=100 base.

⁴ Indexes on a December 1986=100 base.

⁵ In addition, the following metropolitan areas are published semiannually and appear in Tables 34 and 39 of the January and July issues of the CPI Detailed Report: Anchorage, AK; Cincinnati-Hamilton, OH-KY-IN; Denver-Boulder-Greeley, CO; Honolulu, HI; Kansas City, MO-KS; Milwaukee-Racine, WI; Minneapolis-St. Paul, MN-WI; Phoenix-Mesa, AZ; Pittsburgh, PA; Portland-Salem, OR-WA; St. Louis, MO-IL; San Diego, CA;

Tampa-St. Petersburg-Clearwater, FL.

⁶ Indexes on a November 1996=100 base.

- Data not available.

NOTE: Local area indexes are byproducts of the national CPI program. Each local index has a smaller sample size than the national index and is, therefore, subject to substantially more sampling and other measurement error. As a result, local area indexes show greater volatility than the national index, although their long-term trends are similar. Therefore, the Bureau of Labor Statistics strongly urges users to consider adopting the national average CPI for use in their escalator clauses.

NOTE: Index applies to a month as a whole, not to any specific date.

Table 7. Chained Consumer Price Index for All Urban Consumers (C-CPI-U): U.S. city average, by expenditure category and commodity and service group

(December 1999=100, unless otherwise noted)

C-CPI-U	Relative importance, 2007-2008	Unadjusted indexes		Unadjusted percent change to Jan. 2010 from—	
		Dec. 2009	Jan. 2010	Jan. 2009	Dec. 2009
		Expenditure category			
All items	100.000	125.174	^R 125.628	2.8	0.4
Food and beverages	14.519	127.274	127.981	-5	.6
Food	13.493	127.214	127.962	-6	.6
Food at home	7.780	121.918	123.115	-2.2	1.0
Food away from home	5.712	134.482	134.554	1.6	.1
Alcoholic beverages	1.027	128.505	128.680	1.3	.1
Housing	42.074	128.009	^R 128.296	-5	.2
Shelter	32.119	130.739	130.799	-1	.0
Fuels and utilities	5.231	155.703	^R 157.973	-1.9	1.5
Household furnishings and operations	4.724	94.422	94.503	-1.7	.1
Apparel	3.772	89.124	86.984	1.5	-2.4
Transportation	17.199	128.495	130.159	17.1	1.3
Private transportation	16.013	129.097	131.066	18.2	1.5
Public transportation	1.186	120.425	118.303	2.7	-1.8
Medical care	6.294	147.148	148.326	3.1	.8
Medical care commodities	1.570	129.930	130.850	3.2	.7
Medical care services	4.723	153.462	154.738	3.1	.8
Recreation	6.625	103.377	103.359	-2.1	.0
Education and communication	6.288	111.681	111.806	1.4	.1
Education	2.804	180.605	180.738	4.4	.1
Communication	3.484	73.296	73.401	-9	.1
Other goods and services	3.229	136.919	136.994	6.2	.1
Commodity and service group					
Services	59.383	134.398	^R 134.619	.5	.2
Commodities	40.617	113.846	114.592	6.3	.7
Durables	10.376	81.410	81.555	1.3	.2
Nondurables	30.241	130.714	131.785	8.1	.8
All items less food and energy	76.901	119.271	119.269	1.2	.0
Energy	9.606	179.806	^R 185.213	23.1	3.0

^R Revised.

Indexes for 2010 are initial estimates. Indexes for 2009 are interim adjustments.

NOTE: Index applies to a month as a whole, not to any specific date.

Table 1A. Consumer Price Index for All Urban Consumers (CPI-U): U.S. city average, by expenditure category and commodity and service group

(1982-84=100, unless otherwise noted)

CPI-U	Annual average 2008	Annual average 2009	Percent change from 2008 to 2009
Expenditure category			
All items	215.303	214.537	-0.4
All items (1967=100)	644.951	642.658	-
Food and beverages	214.225	218.249	1.9
Food	214.106	217.955	1.8
Food at home	214.125	215.124	.5
Cereals and bakery products	244.853	252.567	3.2
Meats, poultry, fish, and eggs	204.653	203.805	-.4
Dairy and related products	210.396	197.013	-6.4
Fruits and vegetables	278.932	272.945	-2.1
Nonalcoholic beverages and beverage materials	160.045	163.034	1.9
Other food at home	184.166	191.220	3.8
Sugar and sweets	186.577	196.933	5.6
Fats and oils	196.751	201.224	2.3
Other foods	198.103	205.497	3.7
Other miscellaneous foods ¹	119.924	122.393	2.1
Food away from home	215.769	223.272	3.5
Other food away from home ¹	150.640	155.852	3.5
Alcoholic beverages	214.484	220.751	2.9
Housing	216.264	217.057	.4
Shelter	246.666	249.354	1.1
Rent of primary residence	243.271	248.812	2.3
Lodging away from home ¹	143.664	134.243	-6.6
Owners' equivalent rent of residences ²	252.426	256.610	1.7
Owners' equivalent rent of primary residence ²	252.426	256.610	1.7
Tenants' and household insurance ¹	118.843	121.487	2.2
Fuels and utilities	220.018	210.696	-4.2
Household energy	200.808	188.113	-6.3
Fuel oil and other fuels	334.405	239.778	-28.3
Gas (piped) and electricity	202.212	193.563	-4.3
Household furnishings and operations	127.800	128.701	.7
Apparel	118.907	120.078	1.0
Men's and boys' apparel	113.032	113.628	.5
Women's and girls' apparel	107.460	108.091	.6
Infants' and toddlers' apparel	113.762	114.489	.6
Footwear	124.157	126.854	2.2
Transportation	195.549	179.252	-8.3
Private transportation	191.039	174.762	-8.5
New and used motor vehicles ¹	93.291	93.486	.2
New vehicles	134.194	135.623	1.1
Used cars and trucks	133.951	126.973	-5.2
Motor fuel	279.652	201.978	-27.8
Gasoline (all types)	277.457	201.555	-27.4
Motor vehicle parts and equipment	128.747	134.050	4.1
Motor vehicle maintenance and repair	233.859	243.337	4.1
Public transportation	250.549	236.348	-5.7
Medical care	364.065	375.613	3.2
Medical care commodities	296.045	305.108	3.1
Medical care services	384.943	397.299	3.2
Professional services	310.968	319.372	2.7
Hospital and related services	533.953	567.879	6.4
Recreation ¹	113.254	114.272	.9

See footnotes at end of table.

Table 1A. Consumer Price Index for All Urban Consumers (CPI-U): U.S. city average, by expenditure category and commodity and service group-Continued

(1982-84=100, unless otherwise noted)

CPI-U	Annual average 2008	Annual average 2009	Percent change from 2008 to 2009
Expenditure category			
Video and audio ¹	102.632	101.276	-1.3
Education and communication ¹	123.631	127.393	3.0
Education ¹	181.277	190.857	5.3
Educational books and supplies	450.187	482.072	7.1
Tuition, other school fees, and childcare	522.098	548.971	5.1
Communication ¹	84.185	84.954	.9
Information and information processing ¹	81.352	81.944	.7
Telephone services ¹	100.451	102.392	1.9
Information technology, hardware and services ³	10.061	9.672	-3.9
Personal computers and peripheral equipment ⁴	94.944	82.304	-13.3
Other goods and services	345.381	368.586	6.7
Tobacco and smoking products	588.682	730.316	24.1
Personal care	201.279	204.587	1.6
Personal care products	159.290	162.578	2.1
Personal care services	223.669	227.588	1.8
Miscellaneous personal services	338.921	344.469	1.6
Commodity and service group			
Commodities	174.764	169.698	-2.9
Food and beverages	214.225	218.249	1.9
Commodities less food and beverages	153.034	144.395	-5.6
Nondurables less food and beverages	196.192	178.959	-8.8
Apparel	118.907	120.078	1.0
Nondurables less food, beverages, and apparel	248.809	219.592	-11.7
Durables	110.877	109.859	-.9
Services	255.498	259.154	1.4
Rent of shelter ²	257.152	259.924	1.1
Transportation services	244.074	251.031	2.9
Other services	295.780	303.992	2.8
Special indexes			
All items less food	215.528	214.008	-.7
All items less shelter	205.453	203.301	-1.0
All items less medical care	207.777	206.555	-.6
Commodities less food	155.310	147.071	-5.3
Nondurables less food	197.297	181.453	-8.0
Nondurables less food and apparel	244.443	218.687	-10.5
Nondurables	205.901	198.548	-3.6
Services less rent of shelter ²	273.000	278.064	1.9
Services less medical care services	244.987	248.122	1.3
Energy	236.666	193.126	-18.4
All items less energy	214.751	218.433	1.7
All items less food and energy	215.572	219.235	1.7
Commodities less food and energy commodities	140.246	142.041	1.3
Energy commodities	284.352	205.281	-27.8
Services less energy services	261.017	265.875	1.9
Purchasing power of the consumer dollar (1982-84=\$1.00)	\$.465	\$.466	-
Purchasing power of the consumer dollar (1967=\$1.00)	\$.155	\$.156	-

¹ Indexes on a December 1997=100 base.

² Indexes on a December 1982=100 base.

³ Indexes on a December 1988=100 base.

⁴ Indexes on a December 2007=100 base.

- Data not available.

Table 4A. Consumer Price Index for Urban Wage Earners and Clerical Workers (CPI-W): U.S. city average, by expenditure category and commodity and service group

(1982-84=100, unless otherwise noted)

CPI-W	Annual average 2008	Annual average 2009	Percent change from 2008 to 2009
Expenditure category			
All items	211.053	209.630	-0.7
All items (1967=100)	628.661	624.423	-
Food and beverages	213.546	217.480	1.8
Food	213.376	217.118	1.8
Food at home	213.017	213.908	.4
Cereals and bakery products	245.472	253.214	3.2
Meats, poultry, fish, and eggs	204.255	203.394	-.4
Dairy and related products	209.773	195.679	-6.7
Fruits and vegetables	276.759	270.562	-2.2
Nonalcoholic beverages and beverage materials	159.324	162.598	2.1
Other food at home	183.637	190.519	3.7
Sugar and sweets	185.494	195.702	5.5
Fats and oils	197.512	202.003	2.3
Other foods	198.303	205.573	3.7
Other miscellaneous foods ¹	120.348	122.753	2.0
Food away from home	215.613	223.383	3.6
Other food away from home ¹	149.731	155.607	3.9
Alcoholic beverages	214.579	221.325	3.1
Housing	211.839	213.144	.6
Shelter	239.128	242.637	1.5
Rent of primary residence	242.196	247.401	2.1
Lodging away from home ¹	143.164	135.163	-5.6
Owners' equivalent rent of residences ²	228.758	232.499	1.6
Owners' equivalent rent of primary residence ²	228.758	232.499	1.6
Tenants' and household insurance ¹	119.136	121.935	2.3
Fuels and utilities	217.883	209.595	-3.8
Household energy	197.537	186.229	-5.7
Fuel oil and other fuels	331.784	243.003	-26.8
Gas (piped) and electricity	200.265	191.981	-4.1
Water and sewer and trash collection services ¹	152.419	161.584	6.0
Household furnishings and operations	123.635	124.632	.8
Household operations ¹	150.130	152.818	1.8
Apparel	118.735	119.847	.9
Men's and boys' apparel	113.490	114.340	.7
Women's and girls' apparel	107.489	107.602	.1
Infants' and toddlers' apparel	116.266	117.202	.8
Footwear	124.102	127.183	2.5
Transportation	195.692	176.729	-9.7
Private transportation	192.492	173.491	-9.9
New and used motor vehicles ¹	92.146	91.308	-.9
New vehicles	135.338	136.711	1.0
Used cars and trucks	134.731	127.687	-5.2
Motor fuel	280.817	202.695	-27.8
Gasoline (all types)	278.728	202.375	-27.4
Motor vehicle parts and equipment	128.776	134.133	4.2
Motor vehicle maintenance and repair	236.353	245.795	4.0
Public transportation	247.865	234.661	-5.3
Medical care	364.208	376.064	3.3
Medical care commodities	287.970	296.724	3.0
Medical care services	386.317	399.165	3.3
Professional services	313.446	322.127	2.8

See footnotes at end of table.

Table 4A. Consumer Price Index for Urban Wage Earners and Clerical Workers (CPI-W): U.S. city average, by expenditure category and commodity and service group-Continued

(1982-84=100, unless otherwise noted)

CPI-W	Annual average 2008	Annual average 2009	Percent change from 2008 to 2009
Expenditure category			
Hospital and related services	530.193	565.029	6.6
Recreation ¹	110.143	111.015	.8
Video and audio ¹	102.654	101.602	-1.0
Education and communication ¹	119.827	123.017	2.7
Education ¹	178.892	188.143	5.2
Educational books and supplies	452.880	485.025	7.1
Tuition, other school fees, and childcare	504.163	529.316	5.0
Communication ¹	86.807	87.662	1.0
Information and information processing ¹	84.828	85.571	.9
Telephone services ¹	100.502	102.341	1.8
Information technology, hardware and services ³	10.567	10.178	-3.7
Personal computers and peripheral equipment ⁴	94.863	82.104	-13.4
Other goods and services	357.906	391.628	9.4
Tobacco and smoking products	591.100	735.056	24.4
Personal care	199.170	202.490	1.7
Personal care products	159.410	162.557	2.0
Personal care services	223.978	227.804	1.7
Miscellaneous personal services	340.533	346.500	1.8
Commodity and service group			
Commodities	177.618	171.452	-3.5
Food and beverages	213.546	217.480	1.8
Commodities less food and beverages	157.481	147.327	-6.4
Nondurables less food and beverages	205.279	185.579	-9.6
Apparel	118.735	119.847	.9
Nondurables less food, beverages, and apparel	263.756	230.503	-12.6
Durables	111.217	109.610	-1.4
Services	250.272	254.267	1.6
Rent of shelter ²	230.555	233.917	1.5
Tenants' and household insurance ¹	119.136	121.935	2.3
Gas (piped) and electricity	200.265	191.981	-4.1
Water and sewer and trash collection services ¹	152.419	161.584	6.0
Household operations ¹	150.130	152.818	1.8
Transportation services	242.563	250.960	3.5
Medical care services	386.317	399.165	3.3
Other services	284.319	291.572	2.6
Special indexes			
All items less food	210.452	208.128	-1.1
All items less shelter	203.102	199.860	-1.6
All items less medical care	204.626	202.810	-.9
Commodities less food	159.538	149.780	-6.1
Nondurables less food	206.047	187.718	-8.9
Nondurables less food and apparel	258.423	228.679	-11.5
Nondurables	210.333	201.628	-4.1
Services less rent of shelter ²	241.567	245.814	1.8
Services less medical care services	240.275	243.796	1.5
Energy	237.414	192.594	-18.9
All items less energy	208.719	212.652	1.9
All items less food and energy	208.147	212.126	1.9
Commodities less food and energy commodities	141.084	143.099	1.4
Energy commodities	284.270	205.325	-27.8
Services less energy services	255.598	261.022	2.1
Purchasing power of the consumer dollar (1982-84=\$1.00)	\$.474	\$.477	-
Purchasing power of the consumer dollar (1967=\$1.00)	\$.159	\$.160	-

¹ Indexes on a December 1997=100 base.

² Indexes on a December 1984=100 base.

³ Indexes on a December 1988=100 base.

⁴ Indexes on a December 2007=100 base.

- Data not available.