

**Transmission of material in this release is embargoed until  
8:30 a.m. (EDT) Wednesday, May 19, 2010** USDL-10-0685

Technical information: (202)691-7000 [Reed.Steve@bls.gov](mailto:Reed.Steve@bls.gov) [www.bls.gov/cpi](http://www.bls.gov/cpi)  
Media Contact: (202)691-5902 [PressOffice@bls.gov](mailto:PressOffice@bls.gov)

(NOTE: This release was reissued on Friday, July 16, 2010, to correct errors in the January-April 2010 data. Corrections have been made to Table 7. There were no changes made to the text of the release.)

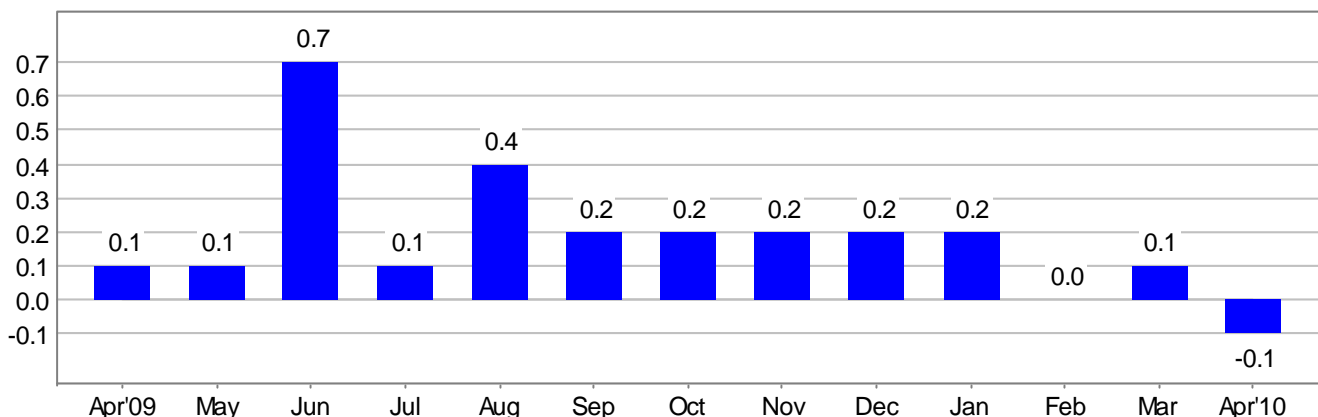
### CONSUMER PRICE INDEX –APRIL 2010

On a seasonally adjusted basis, the Consumer Price Index for All Urban Consumers (CPI-U) declined 0.1 percent in April, the U.S. Bureau of Labor Statistics reported today. Over the last 12 months, the index increased 2.2 percent before seasonal adjustment.

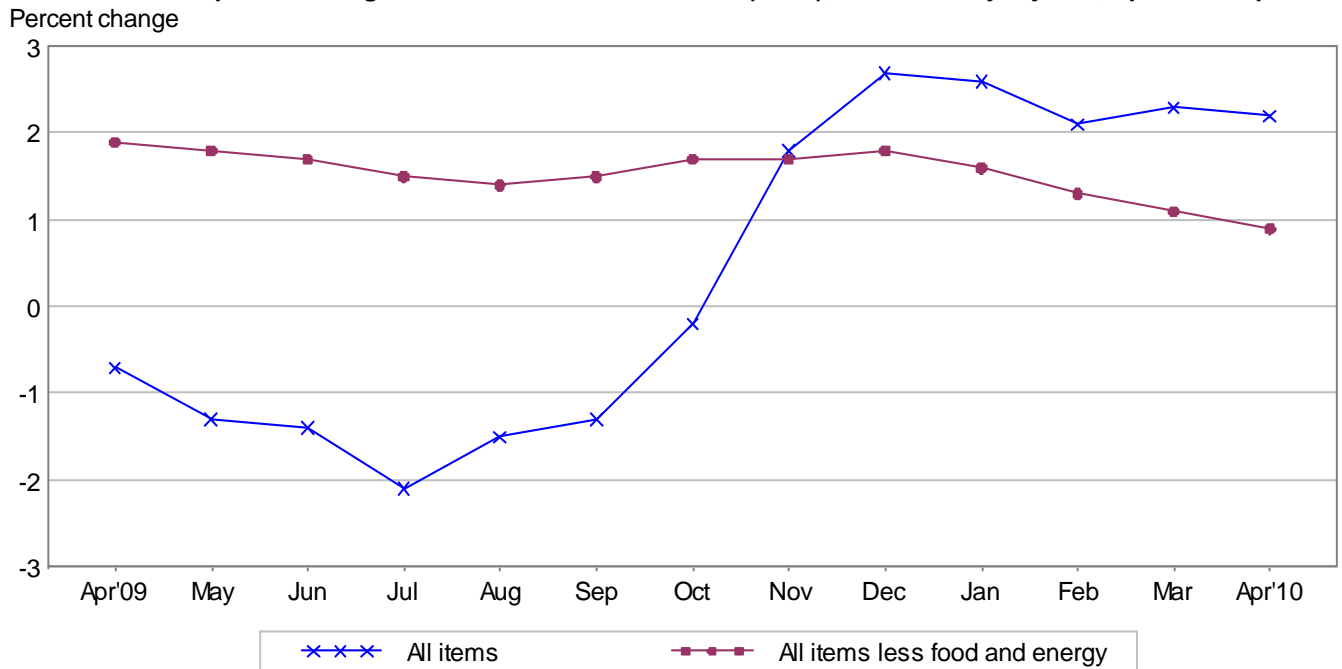
The index for energy decreased 1.4 percent in April and accounted for the seasonally adjusted decline in the all items index. The indexes for gasoline and natural gas both decreased significantly, outweighing increases in the indexes for fuel oil and electricity.

The food index increased 0.2 percent in April, while the index for all items less food and energy was unchanged. The index for meats, poultry, fish, and eggs rose sharply in April and accounted for the food increase; other grocery store food groups were mixed and the index for food away from home rose slightly. Within all items less food and energy, the indexes for recreation, airline fares, and medical care all rose in April. Offsetting these increases were declines in the indexes for apparel and for household furnishings and operations. The continuing stability of the index for all items less food and energy has resulted in an increase over the last 12 months of 0.9 percent, the smallest 12-month increase since January 1966.

**Chart 1. One-month percent change in CPI for All Urban Consumers (CPI-U), seasonally adjusted, Apr. 2009 - Apr. 2010**  
Percent change



**Chart 2. 12-month percent change in CPI for All Urban Consumers (CPI-U), not seasonally adjusted, Apr. 2009 - Apr. 2010**



**Table A. Percent changes in CPI for All Urban Consumers (CPI-U): U.S. city average**

	Seasonally adjusted changes from preceding month							Un-adjusted 12-mos. ended Apr. 2010
	Oct. 2009	Nov. 2009	Dec. 2009	Jan. 2010	Feb. 2010	Mar. 2010	Apr. 2010	
All items .....	.2	.2	.2	.2	.0	.1	-.1	2.2
Food .....	.0	.1	.1	.2	.1	.2	.2	.5
Food at home .....	.0	.0	.2	.4	.1	.5	.2	.0
Food away from home <sup>1</sup> .....	.1	.2	.1	.1	.1	.0	.1	1.1
Energy .....	.6	2.2	.8	2.8	-.5	.0	-1.4	18.5
Energy commodities .....	.4	3.0	1.6	4.9	-1.3	-1.0	-2.1	37.0
Gasoline (all types) .....	.3	2.7	2.3	4.4	-1.4	-.8	-2.4	38.3
Fuel oil <sup>1</sup> .....	2.2	7.4	.0	6.1	-2.4	.7	2.3	28.0
Energy services .....	.8	1.1	-.3	.0	.5	1.4	-.5	-.2
Electricity .....	.8	1.2	-.2	-1.1	-.5	2.1	.7	.6
Utility (piped) gas service .....	.7	.9	-.7	3.5	3.9	-.7	-4.4	-2.9
All items less food and energy .....	.2	.0	.1	-.1	.1	.0	.0	.9
Commodities less food and energy commodities .....	.4	.2	.1	.1	-.1	-.1	-.3	1.2
New vehicles .....	1.4	.5	-.2	-.5	.1	.1	.0	2.5
Used cars and trucks .....	3.1	1.9	2.2	1.5	.7	.5	.2	16.6
Apparel .....	-.3	-.3	.4	-.1	-.7	-.4	-.7	-.9
Medical care commodities <sup>1</sup> .....	.2	.1	-.1	.7	.8	.4	.2	3.5
Services less energy services .....	.1	.0	.1	-.2	.1	.1	.2	.8
Shelter .....	.0	-.2	.0	-.5	.0	-.1	.0	-.7
Transportation services .....	.5	.5	.3	-.3	.4	.4	.4	3.9
Medical care services .....	.2	.3	.2	.5	.4	.3	.3	3.7

<sup>1</sup> Not seasonally adjusted.

## **Consumer Price Index Data for April 2010**

### **Food**

The food index rose 0.2 percent in April, the same increase as in March. The April increase was due to an increase in the index for meats, poultry, fish, and eggs, which rose 1.4 percent in April and has now increased four months in a row. Other grocery store food group indexes were mixed. The index for nonalcoholic beverages increased 0.4 percent in April, while the index for other food at home was unchanged. The fruits and vegetables index, which rose 3.4 percent in March, declined 0.2 percent in April. The index for dairy and related products fell 0.8 percent and the cereals and bakery products index declined 0.3 percent. The index for food away from home, which was unchanged in March, rose 0.1 percent in April. For the past 12 months the food index has risen 0.5 percent, with the index for food at home unchanged and the index for food away from home up 1.1 percent.

### **Energy**

The energy index declined 1.4 percent in April after being unchanged in March. The gasoline index, which fell 0.8 percent in March, declined 2.4 percent. (Before seasonal adjustment, gasoline prices rose 2.9 percent in April.) Over the past 12 months, the gasoline index has increased 38.3 percent. The index for household energy declined in April, falling 0.4 percent after rising 1.3 percent in March. A 4.4 percent decline in the index for natural gas more than offset a 2.3 percent increase in the index for fuel oil and a 0.7 percent rise in the electricity index. Despite the April decline, over the last 12 months the energy index has risen 18.5 percent.

### **All items less food and energy**

The index for all items less food and energy was unchanged in April, as it was in March. The shelter index and its major components of rent and owners' equivalent rent were all unchanged in April. The index for new vehicles was also unchanged. The index for airline fares increased sharply in April, rising 2.2 percent. The index for recreation rose 0.3 percent in April, the medical care index increased 0.2 percent, and the index for used cars and trucks rose 0.2 percent. In contrast, the apparel index fell 0.7 percent and the index for household furnishings and operations declined 0.5 percent. Over the last 12 months, the index for all items less food and energy has risen 0.9 percent. The shelter, apparel, and recreation indexes have all declined over that period.

### **Not seasonally adjusted CPI measures**

The Consumer Price Index for All Urban Consumers (CPI-U) increased 2.2 percent over the last 12 months to an index level of 218.009 (1982-84=100). For the month, the index rose 0.2 percent prior to seasonal adjustment.

The Consumer Price Index for Urban Wage Earners and Clerical Workers (CPI-W) increased 2.9 percent over the last 12 months to an index level of 213.958 (1982-84=100). For the month, the index rose 0.2 percent prior to seasonal adjustment.

The Chained Consumer Price Index for All Urban Consumers (C-CPI-U) increased 2.3 percent over the last 12 months. For the month, the index increased 0.2 percent on a not seasonally adjusted basis. Please note that the indexes for the post-2008 period are subject to revision.

---

**The Consumer Price Index for May 2010 is scheduled to be released on Thursday, June 17, 2010, at 8:30 a.m. (EDT).**

## **Facilities for Sensory Impaired**

Information from this release will be made available to sensory impaired individuals upon request. Voice phone: 202-691-5200, Federal Relay Services: 1-800-877-8339.

## **Brief Explanation of the CPI**

The Consumer Price Index (CPI) is a measure of the average change in prices over time of goods and services purchased by households. The Bureau of Labor Statistics publishes CPIs for two population groups: (1) the CPI for Urban Wage Earners and Clerical Workers (CPI-W), which covers households of wage earners and clerical workers that comprise approximately 32 percent of the total population and (2) the CPI for All Urban Consumers (CPI-U) and the Chained CPI for All Urban Consumers (C-CPI-U), which cover approximately 87 percent of the total population and include in addition to wage earners and clerical worker households, groups such as professional, managerial, and technical workers, the self-employed, short-term workers, the unemployed, and retirees and others not in the labor force.

The CPIs are based on prices of food, clothing, shelter, and fuels, transportation fares, charges for doctors' and dentists' services, drugs, and other goods and services that people buy for day-to-day living. Prices are collected each month in 87 urban areas across the country from about 4,000 housing units and approximately 25,000 retail establishments-department stores, supermarkets, hospitals, filling stations, and other types of stores and service establishments. All taxes directly associated with the purchase and use of items are included in the index. Prices of fuels and a few other items are obtained every month in all 87 locations. Prices of most other commodities and services are collected every month in the three largest geographic areas and every other month in other areas. Prices of most goods and services are obtained by personal visits or telephone calls of the Bureau's trained representatives.

In calculating the index, price changes for the various items in each location are averaged together with weights, which represent their importance in the spending of the appropriate population group. Local data are then combined to obtain a U.S. city average. For the CPI-U and CPI-W separate indexes are also published by size of city, by region of the country, for cross-classifications of regions and population-size classes, and for 27 local areas. Area indexes do not measure differences in the level of prices among cities; they only measure the average change in prices for each area since the base period. For the C-CPI-U data are issued only at the national level. It is important to note that the CPI-U and CPI-W are considered final when released, but the C-CPI-U is issued in preliminary form and subject to two annual revisions.

The index measures price change from a designed reference date. For the CPI-U and the CPI-W the reference base is 1982-84 equals 100.0. The reference base for the C-CPI-U is December 1999 equals 100. An increase of 16.5 percent from the reference base, for example, is shown as 116.5. This change can also be expressed in dollars as follows: the price of a base period market basket of goods and services in the CPI has risen from \$10 in 1982-84 to \$11.65.

For further details visit the CPI home page on the Internet at <http://www.bls.gov/cpi/> or contact our CPI Information and Analysis Section on (202) 691-7000.

## Note on Sampling Error in the Consumer Price Index

The CPI is a statistical estimate that is subject to sampling error because it is based upon a sample of retail prices and not the complete universe of all prices. BLS calculates and publishes estimates of the 1-month, 2-month, 6-month and 12-month percent change standard errors annually, for the CPI-U. These standard error estimates can be used to construct confidence intervals for hypothesis testing. For example, the estimated standard error of the 1 month percent change is 0.04 percent for the U.S. All Items Consumer Price Index. This means that if we repeatedly sample from the universe of all retail prices using the same methodology, and estimate a percentage change for each sample, then 95% of these estimates would be within 0.08 percent of the 1 month percentage change based on all retail prices. For example, for a 1-month change of 0.2 percent in the All Items CPI for All Urban Consumers, we are 95 percent confident that the actual percent change based on all retail prices would fall between 0.12 and 0.28 percent. For the latest data, including information on how to use the estimates of standard error, see “Variance Estimates for Price Changes in the Consumer Price Index, January-December 2009”. These data are available on the CPI home page (<http://www.bls.gov/cpi>), or by using the following link <http://www.bls.gov/cpi/cpivar2009.pdf>

## Calculating Index Changes

Movements of the indexes from one month to another are usually expressed as percent changes rather than changes in index points, because index point changes are affected by the level of the index in relation to its base period while percent changes are not. The example below illustrates the computation of index point and percent changes.

Percent changes for 3-month and 6-month periods are expressed as annual rates and are computed according to the standard formula for compound growth rates. These data indicate what the percent change would be if the current rate were maintained for a 12-month period.

### Index Point Change

CPI	202.416
Less previous index	201.800
Equals index point change	.616

### Percent Change

Index point difference	.616
Divided by the previous index	201.800
Equals	0.003
Results multiplied by one hundred	0.003x100
Equals percent change	0.3

## Regions Defined

The states in the four regions shown in Tables 3 and 6 are listed below.

The Northeast--Connecticut, Maine, Massachusetts, New Hampshire, New York, New Jersey, Pennsylvania, Rhode Island, and Vermont.

The Midwest--Illinois, Indiana, Iowa, Kansas, Michigan, Minnesota, Missouri, Nebraska, North Dakota, Ohio, South Dakota, and Wisconsin.

The South--Alabama, Arkansas, Delaware, Florida, Georgia, Kentucky, Louisiana, Maryland, Mississippi, North Carolina, Oklahoma, South Carolina, Tennessee, Texas, Virginia, West Virginia, and the District of Columbia.

The West--Alaska, Arizona, California, Colorado, Hawaii, Idaho, Montana, Nevada, New Mexico, Oregon, Utah, Washington, and Wyoming.

## A Note on Seasonally Adjusted and Unadjusted Data

Because price data are used for different purposes by different groups, the Bureau of Labor Statistics publishes seasonally adjusted as well as unadjusted changes each month.

For analyzing general price trends in the economy, seasonally adjusted changes are usually preferred since they eliminate the effect of changes that normally occur at the same time and in about the same magnitude every year--such as price movements resulting from changing climatic conditions, production cycles, model changeovers, holidays, and sales.

The unadjusted data are of primary interest to consumers concerned about the prices they actually pay. Unadjusted data also are used extensively for escalation purposes. Many collective bargaining contract agreements and pension plans, for example, tie compensation changes to the Consumer Price Index before adjustment for seasonal variation.

Seasonal factors used in computing the seasonally adjusted indexes are derived by the X-12-ARIMA Seasonal Adjustment Method. Seasonally adjusted indexes and seasonal factors are computed annually. Each year, the last 5 years of seasonally adjusted data are revised. Data from January 2005 through December 2009 were replaced in January 2010. Exceptions to the usual revision schedule were: the updated seasonal data at the end of 1977 replaced data from 1967 through 1977; and, in January 2002, dependently seasonally adjusted series were revised for January 1987-December 2001 as a result of a change in the aggregation weights for dependently adjusted series. For further information, please see "Aggregation of Dependently Adjusted Seasonally Adjusted Series," in the October 2001 issue of the CPI Detailed Report.

The seasonal movement of all items and 54 other aggregations is derived by combining the seasonal movement of 73 selected components. Each year the seasonal status of every series is reevaluated based upon certain statistical criteria. If any of the 73 components change their seasonal adjustment status from seasonally adjusted to not seasonally adjusted, not seasonally adjusted data will be used in the aggregation of the dependent series for the last 5 years, but the seasonally adjusted indexes will be used before that period. Note: 46 of the 73 components are seasonally adjusted for 2010.

Seasonally adjusted data, including the all items index levels, are subject to revision for up to five years after their original release. For this reason, BLS advises against the use of these data in escalation agreements.

Effective with the calculation of the seasonal factors for 1990, the Bureau of Labor Statistics has used an enhanced seasonal adjustment procedure called Intervention Analysis Seasonal Adjustment for some CPI series. Intervention Analysis Seasonal Adjustment allows for better estimates of seasonally adjusted data. Extreme values and/or sharp movements which might distort the seasonal pattern are estimated and removed from the data prior to calculation of seasonal factors. Beginning with the calculation of seasonal factors for 1996, X-12-ARIMA software was used for Intervention Analysis Seasonal Adjustment.

For the seasonal factors introduced in January 2010, BLS adjusted 30 series using Intervention Analysis Seasonal Adjustment, including selected food and beverage items, motor fuels, electricity and vehicles. For example, this procedure was used for the Motor fuel series to offset the effects of events such as damage to oil refineries from Hurricane Katrina.

For a complete list of Intervention Analysis Seasonal Adjustment series and explanations, please refer to the article "Intervention Analysis Seasonal Adjustment", located on our website at <http://www.bls.gov/cpi/cpisapage.htm>.

For additional information on seasonal adjustment in the CPI, please write to the Bureau of Labor Statistics, Division of Consumer Prices and Price Indexes, Washington, DC 20212 or contact David Levin at (202) 691-6968, or by e-mail at [Levin.David@bls.gov](mailto:Levin.David@bls.gov). If you have general questions about the CPI, please call our information staff at (202) 691-7000.



**Table 1. Consumer Price Index for All Urban Consumers (CPI-U): U.S. city average, by expenditure category and commodity and service group**

(1982-84=100, unless otherwise noted)

CPI-U Expenditure category	Relative importance, December 2009	Unadjusted indexes		Unadjusted percent change to Apr. 2010 from—		Seasonally adjusted percent change from—		
		Mar. 2010	Apr. 2010	Apr. 2009	Mar. 2010	Jan. to Feb.	Feb. to Mar.	Mar. to Apr.
All items .....	100.000	217.631	218.009	2.2	0.2	0.0	0.1	-0.1
All items (1967=100) .....	-	651.925	653.059	-	-	-	-	-
Food and beverages .....	14.795	219.378	219.536	.5	.1	.0	.2	.2
Food .....	13.738	219.032	219.218	.5	.1	.1	.2	.2
Food at home .....	7.801	215.623	215.737	.0	.1	.1	.5	.2
Cereals and bakery products .....	1.108	250.930	250.425	-9	-2	.0	-1	-3
Meats, poultry, fish, and eggs .....	1.745	202.812	205.178	-3	1.2	.4	.2	1.4
Dairy and related products <sup>1</sup> .....	.820	198.814	197.308	.1	-8	-1	.0	-8
Fruits and vegetables .....	1.153	280.431	279.272	1.8	-4	-1	3.4	-2
Nonalcoholic beverages and beverage materials .....	.952	162.666	162.128	-5	-3	-4	.0	.4
Other food at home .....	2.023	190.991	191.017	-2	.0	.2	-2	.0
Sugar and sweets .....	.295	199.917	200.775	1.8	.4	1.4	-1.1	.1
Fats and oils .....	.232	198.567	197.749	-1.4	-4	-1	-5	.7
Other foods .....	1.496	204.952	204.947	-4	.0	.0	.0	-2
Other miscellaneous foods <sup>1 2</sup> .....	.439	122.318	122.298	-5	.0	-3	.9	.0
Food away from home <sup>1</sup> .....	5.937	224.991	225.276	1.1	.1	.1	.0	.1
Other food away from home <sup>1 2</sup> .....	.326	158.657	158.738	2.3	.1	.7	.1	.1
Alcoholic beverages .....	1.056	222.521	222.299	1.2	-1	-2	.0	.0
Housing .....	41.960	216.023	215.798	-6	-1	.0	.0	-1
Shelter .....	32.289	248.052	248.031	-7	.0	.0	-1	.0
Rent of primary residence <sup>3</sup> .....	5.966	249.089	249.012	.0	.0	.0	.1	.0
Lodging away from home <sup>2</sup> .....	.769	133.075	134.331	-2.4	.9	.1	.3	1.4
Owners' equivalent rent of residences <sup>3 4</sup> .....	25.206	256.272	256.170	-2	.0	.0	-1	.0
Owners' equivalent rent of primary residence <sup>3 4</sup> .....	23.593	256.266	256.165	-2	.0	.0	-1	.0
Tenants' and household insurance <sup>1 2</sup> .....	.347	124.416	124.879	3.5	.4	.1	.0	.4
Fuels and utilities .....	5.081	212.295	211.726	2.2	-3	.5	1.1	-2
Household energy .....	4.028	187.864	187.054	1.2	-4	.4	1.3	-4
Fuel oil and other fuels <sup>1</sup> .....	.276	276.027	278.080	21.9	.7	-1.3	-5	.7
Gas (piped) and electricity <sup>3</sup> .....	3.752	191.280	190.284	-2	-5	.5	1.4	-5
Water and sewer and trash collection services <sup>2</sup> .....	1.052	168.521	169.116	6.6	.4	.7	.5	.6
Household furnishings and operations .....	4.590	126.750	125.997	-2.8	-6	-4	-4	-5
Household operations <sup>1 2</sup> .....	.781	149.999	150.068	-5	.0	.1	.2	.0
Apparel .....	3.695	122.073	122.143	-9	.1	-7	-4	-7
Men's and boys' apparel .....	.903	113.104	113.692	-3.0	.5	-5	-7	-6
Women's and girls' apparel .....	1.580	111.730	110.816	-9	-8	-9	-5	-1.5
Infants' and toddlers' apparel .....	.196	115.920	116.469	-5	.5	-1.1	.4	.2
Footwear .....	.721	128.525	129.432	1.1	.7	-5	-1.0	.0
Transportation .....	16.685	192.130	193.994	12.8	1.0	-1	-1	-5
Private transportation .....	15.497	187.796	189.503	13.1	.9	-1	-1	-7
New and used motor vehicles <sup>2</sup> .....	6.386	97.032	96.815	4.8	-2	.4	.2	-2
New vehicles .....	3.573	138.600	138.174	2.5	-3	.1	.1	.0
Used cars and trucks .....	2.012	140.797	141.315	16.6	.4	.7	.5	.2
Motor fuel .....	4.525	237.671	244.801	38.1	3.0	-1.3	-1.1	-2.3
Gasoline (all types) .....	4.337	237.356	244.347	38.3	2.9	-1.4	-8	-2.4
Motor vehicle parts and equipment <sup>1</sup> .....	.401	135.523	135.701	.8	.1	.3	-1	.1
Motor vehicle maintenance and repair <sup>1</sup> .....	1.167	246.624	247.355	1.9	.3	.2	.3	.3
Public transportation .....	1.187	244.766	249.135	8.4	1.8	-1	.5	1.7
Medical care .....	6.513	387.142	387.703	3.6	.1	.5	.3	.2
Medical care commodities <sup>1</sup> .....	1.611	314.023	314.535	3.5	.2	.8	.4	.2
Medical care services .....	4.902	409.687	410.256	3.7	.1	.4	.3	.3
Professional services .....	2.796	326.206	327.015	2.9	.2	.2	.0	.2

See footnotes at end of table.

**Table 1. Consumer Price Index for All Urban Consumers (CPI-U): U.S. city average, by expenditure category and commodity and service group-Continued**

(1982-84=100, unless otherwise noted)

CPI-U Expenditure category	Relative importance, December 2009	Unadjusted indexes		Unadjusted percent change to Apr. 2010 from—		Seasonally adjusted percent change from—			
		Mar. 2010	Apr. 2010	Apr. 2009	Mar. 2010	Jan. to Feb.	Feb. to Mar.	Mar. to Apr.	
Hospital and related services <sup>3</sup>	1.619	603.850	604.756	7.1	0.2	1.1	1.0	0.4	
Recreation <sup>2</sup>	6.437	113.339	113.781	-.4	.4	-.1	-.1	.3	
Video and audio <sup>2</sup>	1.894	99.915	100.074	-2.2	.2	-.7	.1	-.1	
Education and communication <sup>2</sup>	6.434	129.236	129.344	2.4	.1	.2	.3	.2	
Education <sup>2</sup>	3.035	196.470	196.798	5.0	.2	.5	.6	.5	
Educational books and supplies	.200	502.273	501.170	6.1	-.2	.7	.0	.2	
Tuition, other school fees, and childcare	2.835	564.613	565.709	4.9	.2	.5	.6	.5	
Communication <sup>2</sup>	3.399	84.940	84.947	.0	.0	-.1	.0	.0	
Information and information processing <sup>1 2</sup>	3.225	81.776	81.784	-.4	.0	-.1	.0	.0	
Telephone services <sup>1 2</sup>	2.392	102.298	102.394	.3	.1	-.4	.0	.1	
Information technology, hardware and services <sup>1 5</sup>	.833	9.552	9.530	-3.6	-.2	.9	.1	-.2	
Personal computers and peripheral equipment <sup>6</sup>	.246	78.385	78.234	-8.7	-.2	-.5	.0	-.4	
Other goods and services	3.483	378.808	378.911	2.2	.0	.1	.1	.0	
Tobacco and smoking products <sup>1</sup>	.871	787.268	788.066	6.1	.1	-.1	.2	.1	
Personal care	2.612	206.594	206.599	.8	.0	.1	.0	-.1	
Personal care products <sup>1</sup>	.688	162.367	161.601	-1.3	-.5	.2	.2	-.5	
Personal care services <sup>1</sup>	.642	228.429	229.635	.8	.5	-.2	.1	.5	
Miscellaneous personal services	1.048	352.028	352.779	3.0	.2	.3	.3	.1	
<b>Commodity and service group</b>									
Commodities	39.816	174.798	175.333	4.5	.3	-.2	-.1	-.4	
Food and beverages	14.795	219.378	219.536	.5	.1	.0	.2	.2	
Commodities less food and beverages	25.021	150.953	151.621	7.0	.4	-.3	-.2	-.7	
Nondurables less food and beverages	15.044	190.674	192.335	10.6	.9	-.3	-.8	-1.3	
Apparel	3.695	122.073	122.143	-.9	.1	-.7	-.4	-.7	
Nondurables less food, beverages, and apparel	11.349	237.683	240.381	14.9	1.1	-.3	-.6	-1.6	
Durables	9.978	111.694	111.450	1.9	-.2	.0	-.1	-.2	
Services	60.184	260.196	260.420	.8	.1	.1	.2	.1	
Rent of shelter <sup>4</sup>	31.942	258.489	258.457	-.8	.0	-.3	-.3	.1	
Tenants' and household insurance <sup>1 2</sup>	.347	124.416	124.879	3.5	.4	.1	.0	.4	
Gas (piped) and electricity <sup>3</sup>	3.752	191.280	190.284	-.2	-.5	.5	1.4	-.5	
Water and sewer and trash collection services <sup>2</sup>	1.052	168.521	169.116	6.6	.4	.7	.5	.6	
Household operations <sup>1 2</sup>	.781	149.999	150.068	-.5	.0	.1	.2	.0	
Transportation services	6.060	257.337	258.384	3.9	.4	.4	.4	.4	
Medical care services	4.902	409.687	410.256	3.7	.1	.4	.3	.3	
Other services	11.347	307.451	308.493	2.3	.3	.1	.1	.4	
<b>Special indexes</b>									
All items less food	86.262	217.430	217.839	2.5	.2	.0	.0	-.1	
All items less shelter	67.711	208.181	208.722	3.7	.3	.0	.1	-.1	
All items less medical care	93.487	209.301	209.669	2.1	.2	.0	.0	-.1	
Commodities less food	26.078	153.516	154.163	6.7	.4	-.3	-.2	-.7	
Nondurables less food	16.100	192.601	194.159	10.0	.8	-.3	-.6	-1.3	
Nondurables less food and apparel	12.405	235.198	237.626	13.6	1.0	-.3	-.5	-1.4	
Nondurables	29.838	205.409	206.393	5.4	.5	-.2	-.1	-.5	
Services less rent of shelter <sup>4</sup>	28.243	282.297	282.851	2.6	.2	.3	.4	.3	
Services less medical care services	55.282	248.531	248.733	.5	.1	-.1	.0	.2	
Energy	8.553	209.999	212.977	18.5	1.4	-.5	.0	-1.4	
All items less energy	91.447	220.133	220.252	.9	.1	.1	.1	.1	
All items less food and energy	77.708	221.059	221.166	.9	.0	.1	.0	.0	
Commodities less food and energy commodities	21.276	144.399	144.169	1.2	-.2	-.1	-.1	-.3	
Energy commodities	4.801	241.239	248.165	37.0	2.9	-1.3	-1.0	-2.1	
Services less energy services	56.432	267.248	267.587	.8	.1	.1	.1	.2	
Purchasing power of the consumer dollar (1982-84=\$1.00)	-	\$ .459	\$ .459	-	-	-	-	-	
Purchasing power of the consumer dollar (1967=\$1.00)	-	\$ .153	\$ .153	-	-	-	-	-	

<sup>1</sup> Not seasonally adjusted.

<sup>2</sup> Indexes on a December 1997=100 base.

<sup>3</sup> This index series was calculated using a Laspeyres estimator. All other item stratum index series were calculated using a geometric means estimator.

<sup>4</sup> Indexes on a December 1982=100 base.

<sup>5</sup> Indexes on a December 1988=100 base.

<sup>6</sup> Indexes on a December 2007=100 base.

- Data not available.

NOTE: Index applies to a month as a whole, not to any specific date.

**Table 2. Consumer Price Index for All Urban Consumers (CPI-U): Seasonally adjusted U.S. city average, by expenditure category and commodity and service group**

(1982-84=100, unless otherwise noted)

CPI-U	Seasonally adjusted indexes				Seasonally adjusted annual rate percent change for					
					3 months ended—			6 months ended—		
	Jan. 2010	Feb. 2010	Mar. 2010	Apr. 2010	July 2009	Oct. 2009	Jan. 2010	Apr. 2010	Oct. 2009	Apr. 2010
<b>Expenditure category</b>										
All items .....	217.587	217.591	217.729	217.579	3.7	3.0	2.3	0.0	3.4	1.1
Food and beverages .....	218.731	218.838	219.338	219.680	-1.4	.1	1.8	1.7	-7	1.8
Food .....	218.339	218.494	219.032	219.396	-1.8	.0	1.9	2.0	-9	1.9
Food at home .....	214.479	214.628	215.622	216.045	-3.8	-1.4	2.3	3.0	-2.6	2.6
Cereals and bakery products .....	251.452	251.354	250.990	250.147	-1.1	-1	-4	-2.1	-6	-1.2
Meats, poultry, fish, and eggs .....	201.682	202.506	202.823	205.699	-7.9	-3.6	3.1	8.2	-5.8	5.6
Dairy and related products <sup>1</sup> .....	198.949	198.800	198.814	197.308	-7.9	4.7	7.6	-3.3	-1.8	2.0
Fruits and vegetables .....	272.854	272.571	281.805	281.331	-3.0	-8.8	7.4	13.0	-5.9	10.2
Nonalcoholic beverages and beverage materials .....	162.499	161.872	161.908	162.487	-1.3	-5	.0	.0	-9	.0
Other food at home .....	190.812	191.211	190.831	190.748	-1.4	1.5	-7	-1	.1	-4
Sugar and sweets .....	198.862	201.656	199.463	199.672	-2.9	6.7	1.9	1.6	1.8	1.8
Fats and oils .....	199.460	199.352	198.373	199.755	-4.3	-3.4	1.8	.6	-3.8	1.2
Other foods .....	204.762	204.793	204.843	204.458	-6	1.3	-1.6	-6	.3	-1.1
Other miscellaneous foods <sup>1 2</sup> .....	121.564	121.172	122.318	122.298	-2.9	.4	-1.8	2.4	-1.3	.3
Food away from home <sup>1</sup> .....	224.916	225.081	224.991	225.276	.8	1.6	1.2	.6	1.2	.9
Other food away from home <sup>1 2</sup> .....	157.517	158.569	158.657	158.738	3.8	1.2	1.2	3.1	2.5	2.2
Alcoholic beverages .....	222.488	221.954	221.946	222.001	2.9	2.2	.5	-9	2.6	-2
Housing .....	216.185	216.181	216.280	216.129	-1.0	.4	-1.4	-1	-3	-7
Shelter .....	248.029	247.976	247.812	247.855	.1	.3	-2.6	-3	.2	-1.4
Rent of primary residence <sup>3</sup> .....	248.885	248.813	248.957	248.982	.6	-5	-1	.2	.1	.0
Lodging away from home <sup>2</sup> .....	129.698	129.776	130.195	132.018	-6.5	5.4	-13.0	7.3	-7	-3.4
Owners' equivalent rent of residences <sup>3 4</sup> .....	256.509	256.449	256.170	256.091	.7	-1	-7	-7	.3	-7
Owners' equivalent rent of primary residence <sup>3 4</sup> .....	256.507	256.445	256.163	256.086	.7	-1	-7	-7	.3	-7
Tenants' and household insurance <sup>1 2</sup> .....	124.360	124.439	124.416	124.879	2.1	3.0	7.3	1.7	2.5	4.5
Fuels and utilities .....	212.757	213.770	216.172	215.725	-8.0	4.9	6.8	5.7	-1.8	6.2
Household energy .....	188.982	189.753	192.188	191.400	-11.1	4.3	7.3	5.2	-3.7	6.3
Fuel oil and other fuels <sup>1</sup> .....	280.850	277.284	276.027	278.080	3.7	26.1	75.7	-3.9	14.4	30.0
Gas (piped) and electricity <sup>3</sup> .....	192.250	193.283	196.019	195.046	-12.1	3.0	3.4	5.9	-4.8	4.7
Water and sewer and trash collection services <sup>2</sup> .....	166.463	167.696	168.543	169.531	6.6	7.2	5.0	7.6	6.9	6.3
Household furnishings and operations .....	127.392	126.879	126.389	125.722	-7	-3.8	-1.6	-5.1	-2.3	-3.4
Household operations <sup>1 2</sup> .....	149.510	149.707	149.999	150.068	-2.2	.5	-1.8	1.5	-8	-2
Apparel .....	120.613	119.814	119.316	118.459	3.8	-3	.2	-7.0	1.7	-3.4
Men's and boys' apparel .....	112.296	111.748	111.014	110.398	-1.8	-1.8	-1.7	-6.6	-1.8	-4.2
Women's and girls' apparel .....	109.196	108.261	107.682	106.015	8.3	-1.1	1.1	-11.2	3.5	-5.2
Infants' and toddlers' apparel .....	114.757	113.551	114.027	114.244	1.5	-2.6	.8	-1.8	-5	-5
Footwear .....	129.343	128.641	127.341	127.337	5.3	1.1	4.3	-6.1	3.2	-1.0
Transportation .....	193.593	193.332	193.195	192.243	25.3	15.6	14.2	-2.8	20.4	5.4
Private transportation .....	189.316	189.062	188.843	187.597	27.1	15.6	14.9	-3.6	21.2	5.3
New and used motor vehicles <sup>2</sup> .....	96.422	96.794	96.993	96.840	5.1	7.8	4.9	1.7	6.5	3.3
New vehicles .....	137.470	137.648	137.793	137.747	7.4	2.9	-1.0	.8	5.1	-1
Used cars and trucks .....	139.990	140.963	141.683	141.905	7.6	30.5	24.6	5.6	18.5	14.7
Motor fuel .....	248.088	244.826	242.182	236.628	120.8	38.5	43.6	-17.2	74.9	9.0
Gasoline (all types) .....	247.897	244.409	242.413	236.631	121.1	37.5	44.8	-17.0	74.4	9.7
Motor vehicle parts and equipment <sup>1</sup> .....	135.277	135.649	135.523	135.701	-2.7	-2	5.0	1.3	-1.5	3.1
Motor vehicle maintenance and repair <sup>1</sup> .....	245.567	245.969	246.624	247.355	.6	3.9	.3	2.9	2.3	1.6
Public transportation .....	245.058	244.713	246.023	250.293	3.1	16.3	5.9	8.8	9.5	7.3
Medical care .....	382.737	384.703	386.007	386.905	2.6	3.7	3.8	4.4	3.1	4.1
Medical care commodities <sup>1</sup> .....	310.494	312.864	314.023	314.535	.3	5.6	2.8	5.3	2.9	4.0
Medical care services .....	405.006	406.755	408.092	409.135	3.3	3.0	4.1	4.1	3.2	4.1
Professional services .....	324.784	325.373	325.393	326.134	3.8	2.7	3.6	1.7	3.3	2.6

See footnotes at end of table.

**Table 2. Consumer Price Index for All Urban Consumers (CPI-U): Seasonally adjusted U.S. city average, by expenditure category and commodity and service group-Continued**

(1982-84=100, unless otherwise noted)

CPI-U	Seasonally adjusted indexes				Seasonally adjusted annual rate percent change for					
					3 months ended—			6 months ended—		
	Jan. 2010	Feb. 2010	Mar. 2010	Apr. 2010	July 2009	Oct. 2009	Jan. 2010	Apr. 2010	Oct. 2009	Apr. 2010
<b>Expenditure category</b>										
Hospital and related services <sup>3</sup> .....	587.561	593.869	599.951	602.052	5.2	5.8	7.2	10.2	5.5	8.7
Recreation <sup>2</sup> .....	113.524	113.415	113.299	113.612	1.6	-1.4	-2.1	.3	.1	-9
Video and audio <sup>2</sup> .....	100.255	99.571	99.650	99.556	-6	-5.1	-1	-2.8	-2.9	-1.4
Education and communication <sup>2</sup> .....	128.872	129.141	129.533	129.852	2.9	1.9	1.8	3.1	2.4	2.5
Education <sup>2</sup> .....	195.209	196.252	197.418	198.426	5.6	3.8	4.0	6.8	4.7	5.3
Educational books and supplies .....	498.880	502.169	501.997	502.840	9.7	5.1	6.4	3.2	7.4	4.8
Tuition, other school fees, and childcare .....	561.001	563.950	567.553	570.587	5.3	3.7	3.8	7.0	4.5	5.4
Communication <sup>2</sup> .....	84.974	84.905	84.942	84.950	.3	.0	-.4	-.1	.1	-.2
Information and information processing <sup>1 2</sup> .....	81.817	81.743	81.776	81.784	-.5	-.1	-.8	-.2	-.3	-.5
Telephone services <sup>1 2</sup> .....	102.729	102.288	102.298	102.394	2.3	1.0	-.6	-1.3	1.6	-1.0
Information technology, hardware and services <sup>1 5</sup> .....	9.457	9.540	9.552	9.530	-10.8	-4.2	-1.8	3.1	-7.5	.6
Personal computers and peripheral equipment <sup>6</sup> .....	77.925	77.518	77.541	77.198	-15.5	-11.0	-4.2	-3.7	-13.3	-3.9
Other goods and services .....	377.853	378.091	378.386	378.248	3.4	2.5	2.7	.4	2.9	1.5
Tobacco and smoking products <sup>1</sup> .....	786.857	785.714	787.268	788.066	11.5	5.8	6.9	.6	8.6	3.7
Personal care .....	205.935	206.209	206.287	206.116	.6	1.3	1.1	.4	.9	.7
Personal care products <sup>1</sup> .....	161.627	162.029	162.367	161.601	-2.2	-1.5	-1.5	-.1	-1.8	-.8
Personal care services <sup>1</sup> .....	228.629	228.107	228.429	229.635	-1.0	2.0	.3	1.8	.5	1.0
Miscellaneous personal services .....	350.113	351.082	352.109	352.300	3.1	3.1	3.1	2.5	3.1	2.8
<b>Commodity and service group</b>										
Commodities .....	175.196	174.878	174.762	174.112	9.0	4.9	6.4	-2.5	6.9	1.9
Food and beverages .....	218.731	218.838	219.338	219.680	-1.4	.1	1.8	1.7	-.7	1.8
Commodities less food and beverages .....	151.759	151.280	150.920	149.892	16.1	8.0	9.3	-4.8	12.0	2.0
Nondurables less food and beverages .....	192.765	192.192	190.632	188.173	27.9	11.9	15.3	-9.2	19.6	2.3
Apparel .....	120.613	119.814	119.316	118.459	3.8	-.3	.2	-7.0	1.7	-3.4
Nondurables less food, beverages, and apparel .....	241.982	241.214	239.779	235.996	38.2	16.0	20.2	-9.5	26.6	4.3
Durables .....	111.565	111.514	111.430	111.244	2.3	3.9	2.5	-1.1	3.1	.6
Services .....	259.716	260.045	260.469	260.792	.3	1.7	-.4	1.7	1.0	.6
Rent of shelter <sup>4</sup> .....	259.168	258.517	257.746	257.900	-.1	.6	-1.6	-1.9	.2	-1.8
Tenants' and household insurance <sup>1 2</sup> .....	124.360	124.439	124.416	124.879	2.1	3.0	7.3	1.7	2.5	4.5
Gas (piped) and electricity <sup>3</sup> .....	192.250	193.283	196.019	195.046	-12.1	3.0	3.4	5.9	-4.8	4.7
Water and sewer and trash collection services <sup>2</sup> .....	166.463	167.696	168.543	169.531	6.6	7.2	5.0	7.6	6.9	6.3
Household operations <sup>1 2</sup> .....	149.510	149.707	149.999	150.068	-2.2	.5	-1.8	1.5	-.8	-.2
Transportation services .....	255.735	256.676	257.816	258.879	1.2	7.3	2.1	5.0	4.2	3.5
Medical care services .....	405.006	406.755	408.092	409.135	3.3	3.0	4.1	4.1	3.2	4.1
Other services .....	306.985	307.265	307.678	308.870	3.6	1.6	1.3	2.5	2.6	1.9
<b>Special indexes</b>										
All items less food .....	217.489	217.469	217.544	217.313	4.7	3.5	2.4	-.3	4.1	1.0
All items less shelter .....	208.128	208.155	208.414	208.187	5.6	4.3	4.7	.1	4.9	2.4
All items less medical care .....	209.424	209.353	209.445	209.257	3.8	2.9	2.2	-.3	3.4	.9
Commodities less food .....	154.302	153.820	153.468	152.467	15.5	7.7	8.9	-4.7	11.5	1.9
Nondurables less food .....	194.517	193.959	192.716	190.158	26.5	10.2	14.8	-8.7	18.1	2.4
Nondurables less food and apparel .....	239.081	238.287	237.059	233.688	34.3	14.1	19.0	-8.7	23.8	4.2
Nondurables .....	206.144	205.792	205.619	204.613	10.3	7.1	7.5	-2.9	8.7	2.2
Services less rent of shelter <sup>4</sup> .....	281.417	282.121	283.215	284.130	.1	3.6	2.7	3.9	1.8	3.3
Services less medical care services .....	248.690	248.541	248.658	249.037	-.3	1.8	-.1	.6	.8	.2
Energy .....	215.536	214.379	214.376	211.324	38.1	21.0	25.6	-7.6	29.2	7.7
All items less energy .....	219.524	219.646	219.799	219.942	1.1	1.4	.3	.8	1.3	.5
All items less food and energy .....	220.463	220.579	220.664	220.768	1.7	1.7	.0	.6	1.7	.3
Commodities less food and energy commodities .....	143.863	143.761	143.666	143.279	2.8	2.0	1.7	-1.6	2.4	.0
Energy commodities .....	251.449	248.149	245.556	240.344	110.6	37.8	45.4	-16.5	70.3	10.2
Services less energy services .....	266.630	266.894	267.103	267.547	1.3	1.6	-.6	1.4	1.4	.4

<sup>1</sup> Not seasonally adjusted.

<sup>2</sup> Indexes on a December 1997=100 base.

<sup>3</sup> This index series was calculated using a Laspeyres estimator. All other item stratum index series were calculated using a geometric means estimator.

<sup>4</sup> Indexes on a December 1982=100 base.

<sup>5</sup> Indexes on a December 1988=100 base.

<sup>6</sup> Indexes on a December 2007=100 base.

NOTE: Index applies to a month as a whole, not to any specific date.

**Table 3. Consumer Price Index for All Urban Consumers (CPI-U): Selected areas, all items index**

(1982-84=100, unless otherwise noted)

CPI-U	Pricing schedule 1	All items									
		Indexes				Percent change to Apr.2010 from—			Percent change to Mar.2010 from—		
		Jan. 2010	Feb. 2010	Mar. 2010	Apr. 2010	Apr. 2009	Feb. 2010	Mar. 2010	Mar. 2009	Jan. 2010	Feb. 2010
U.S. city average .....	M	216.687	216.741	217.631	218.009	2.2	0.6	0.2	2.3	0.4	0.4
<b>Region and area size<sup>2</sup></b>											
Northeast urban .....	M	232.294	232.382	233.188	233.615	2.5	.5	.2	2.6	.4	.3
Size A - More than 1,500,000 .....	M	234.109	234.183	235.060	235.496	2.2	.6	.2	2.3	.4	.4
Size B/C - 50,000 to 1,500,000 <sup>3</sup> .....	M	138.416	138.491	138.871	139.115	3.4	.5	.2	3.3	.3	.3
Midwest urban .....	M	206.564	206.563	207.359	207.777	2.7	.6	.2	2.6	.4	.4
Size A - More than 1,500,000 .....	M	207.325	207.329	207.975	208.308	2.4	.5	.2	2.3	.3	.3
Size B/C - 50,000 to 1,500,000 <sup>3</sup> .....	M	132.417	132.451	133.096	133.510	3.0	.8	.3	2.9	.5	.5
Size D - Nonmetropolitan (less than 50,000) .....	M	203.490	203.274	204.204	204.326	3.4	.5	.1	3.5	.4	.5
South urban .....	M	210.056	210.020	211.216	211.528	2.4	.7	.1	2.5	.6	.6
Size A - More than 1,500,000 .....	M	211.762	211.503	212.692	213.052	2.0	.7	.2	2.0	.4	.6
Size B/C - 50,000 to 1,500,000 <sup>3</sup> .....	M	133.517	133.575	134.363	134.606	2.5	.8	.2	2.7	.6	.6
Size D - Nonmetropolitan (less than 50,000) .....	M	213.873	214.007	215.026	214.714	3.3	.3	-.1	3.9	.5	.5
West urban .....	M	219.989	220.179	220.809	221.202	1.5	.5	.2	1.6	.4	.3
Size A - More than 1,500,000 .....	M	223.852	223.989	224.636	225.040	1.5	.5	.2	1.6	.4	.3
Size B/C - 50,000 to 1,500,000 <sup>3</sup> .....	M	133.366	133.513	133.863	134.133	1.7	.5	.2	1.6	.4	.3
<b>Size classes</b>											
A <sup>4</sup> .....	M	197.948	197.949	198.695	199.043	2.0	.6	.2	2.0	.4	.4
B/C <sup>3</sup> .....	M	133.954	134.028	134.639	134.920	2.6	.7	.2	2.6	.5	.5
D .....	M	209.984	210.098	211.011	210.968	2.7	.4	.0	3.1	.5	.4
<b>Selected local areas<sup>5</sup></b>											
Chicago-Gary-Kenosha, IL-IN-WI .....	M	212.104	212.456	212.952	212.929	2.4	.2	.0	2.6	.4	.2
Los Angeles-Riverside-Orange County, CA ...	M	224.610	224.620	225.483	225.916	1.9	.6	.2	1.9	.4	.4
New York-Northern N.J.-Long Island, NY-NJ-CT-PA .....	M	238.970	238.862	240.101	240.529	2.1	.7	.2	2.1	.5	.5
Boston-Brockton-Nashua, MA-NH-ME-CT .....	1	237.266	-	237.986	-	-	-	-	2.5	.3	-
Cleveland-Akron, OH .....	1	203.037	-	203.577	-	-	-	-	2.1	.3	-
Dallas-Fort Worth, TX .....	1	202.106	-	201.982	-	-	-	-	1.0	-.1	-
Washington-Baltimore, DC-MD-VA-WV <sup>6</sup> .....	1	141.124	-	141.741	-	-	-	-	2.3	.4	-
Atlanta, GA .....	2	-	202.646	-	204.014	2.4	.7	-	-	-	-
Detroit-Ann Arbor-Flint, MI .....	2	-	203.380	-	205.248	1.4	.9	-	-	-	-
Houston-Galveston-Brazoria, TX .....	2	-	192.412	-	194.037	2.3	.8	-	-	-	-
Miami-Fort Lauderdale, FL .....	2	-	222.505	-	222.625	.9	.1	-	-	-	-
Philadelphia-Wilmington-Atlantic City, PA-NJ-DE-MD .....	2	-	226.529	-	227.432	2.6	.4	-	-	-	-
San Francisco-Oakland-San Jose, CA .....	2	-	226.145	-	227.697	1.7	.7	-	-	-	-
Seattle-Tacoma-Bremerton, WA .....	2	-	226.085	-	226.513	.3	.2	-	-	-	-

<sup>1</sup> Foods, fuels, and several other items priced every month in all areas; most other goods and services priced as indicated:

M - Every month.

1 - January, March, May, July, September, and November.

2 - February, April, June, August, October, and December.

<sup>2</sup> Regions defined as the four Census regions. See technical notes.

<sup>3</sup> Indexes on a December 1996=100 base.

<sup>4</sup> Indexes on a December 1986=100 base.

<sup>5</sup> In addition, the following metropolitan areas are published semiannually and appear in Tables 34 and 39 of the January and July issues of the CPI Detailed Report: Anchorage, AK; Cincinnati-Hamilton, OH-KY-IN; Denver-Boulder-Greeley, CO; Honolulu, HI; Kansas City, MO-KS; Milwaukee-Racine, WI; Minneapolis-St. Paul, MN-WI; Phoenix-Mesa, AZ; Pittsburgh, PA; Portland-Salem, OR-WA; St. Louis, MO-IL; San Diego, CA;

Tampa-St. Petersburg-Clearwater, FL.

<sup>6</sup> Indexes on a November 1996=100 base.

- Data not available.

NOTE: Local area indexes are byproducts of the national CPI program. Each local index has a smaller sample size than the national index and is, therefore, subject to substantially more sampling and other measurement error. As a result, local area indexes show greater volatility than the national index, although their long-term trends are similar. Therefore, the Bureau of Labor Statistics strongly urges users to consider adopting the national average CPI for use in their escalator clauses.

NOTE: Index applies to a month as a whole, not to any specific date.

**Table 4. Consumer Price Index for Urban Wage Earners and Clerical Workers (CPI-W): U.S. city average, by expenditure category and commodity and service group**

(1982-84=100, unless otherwise noted)

CPI-W Expenditure category	Relative importance, December 2009	Unadjusted indexes		Unadjusted percent change to Apr. 2010 from—		Seasonally adjusted percent change from—		
		Mar. 2010	Apr. 2010	Apr. 2009	Mar. 2010	Jan. to Feb.	Feb. to Mar.	Mar. to Apr.
All items .....	100.000	213.525	213.958	2.9	0.2	0.0	0.1	-0.1
All items (1967=100) .....	-	636.025	637.316	-	-	-	-	-
Food and beverages .....	16.425	218.502	218.730	.5	.1	.1	.2	.2
Food .....	15.333	218.066	218.319	.4	.1	.1	.2	.2
Food at home .....	8.900	214.291	214.498	-.1	.1	.1	.4	.2
Cereals and bakery products .....	1.257	251.493	251.031	-1.0	-.2	-.1	-.1	-.4
Meats, poultry, fish, and eggs .....	2.144	202.540	204.878	-.3	1.2	.6	.1	1.4
Dairy and related products <sup>1</sup> .....	.898	197.370	195.958	.1	-.7	.0	-.1	-.7
Fruits and vegetables .....	1.223	277.347	276.727	1.8	-.2	-.1	3.4	-.1
Nonalcoholic beverages and beverage materials .....	1.123	162.499	161.721	-.5	-.5	-.3	.1	.3
Other food at home .....	2.254	190.232	190.299	-.2	.0	.1	-.3	.0
Sugar and sweets .....	.321	198.720	199.665	1.9	.5	1.4	-1.1	.3
Fats and oils .....	.259	198.808	198.454	-1.5	-.2	.0	-1.0	1.1
Other foods .....	1.674	205.081	205.048	-.4	.0	-.1	.0	-.2
Other miscellaneous foods <sup>1 2</sup> .....	.472	122.543	122.712	-.3	.1	-.5	.9	.1
Food away from home <sup>1</sup> .....	6.433	225.072	225.395	1.1	.1	.1	.0	.1
Other food away from home <sup>1 2</sup> .....	.321	159.023	159.088	3.0	.0	.7	.1	.0
Alcoholic beverages .....	1.092	223.452	223.305	1.4	-.1	-.3	-.2	.0
Housing .....	39.753	212.604	212.368	-.2	-.1	.0	.1	-.1
Shelter .....	30.171	242.019	241.987	-.4	.0	.0	.0	.0
Rent of primary residence <sup>3</sup> .....	8.476	247.555	247.474	.0	.0	.0	.1	.0
Lodging away from home <sup>2</sup> .....	.432	134.632	135.793	-1.6	.9	.5	.4	1.2
Owners' equivalent rent of residences <sup>3 4</sup> .....	20.959	232.179	232.108	-.2	.0	.0	-.1	.0
Owners' equivalent rent of primary residence <sup>3 4</sup> .....	20.218	232.180	232.109	-.2	.0	.0	-.1	.0
Tenants' and household insurance <sup>1 2</sup> .....	.303	125.374	125.872	4.0	.4	.1	.0	.4
Fuels and utilities .....	5.632	210.775	210.326	2.2	-.2	.2	1.1	-.1
Household energy .....	4.517	185.557	184.918	1.2	-.3	.1	1.3	-.3
Fuel oil and other fuels <sup>1</sup> .....	.271	279.384	280.770	21.0	.5	-1.0	-.6	.5
Gas (piped) and electricity <sup>3</sup> .....	4.246	189.595	188.837	.1	-.4	.2	1.4	-.3
Water and sewer and trash collection services <sup>2</sup> .....	1.114	169.229	169.766	6.7	.3	.8	.5	.6
Household furnishings and operations .....	3.950	122.859	121.979	-2.8	-.7	-.4	-.5	-.7
Household operations <sup>1 2</sup> .....	.369	152.065	152.329	-.4	.2	.0	.3	.2
Apparel .....	3.788	121.347	121.293	-1.2	.0	-.5	-.7	-.8
Men's and boys' apparel .....	.945	113.032	113.538	-3.6	.4	-.4	-1.1	-.3
Women's and girls' apparel .....	1.568	110.885	109.783	-1.1	-1.0	-.5	-.8	-1.8
Infants' and toddlers' apparel .....	.285	119.644	120.106	.2	.4	-1.2	.5	.1
Footwear .....	.781	128.172	129.112	.6	.7	-.4	-1.2	.0
Transportation .....	18.647	191.294	193.320	14.7	1.1	-.1	-.1	-.8
Private transportation .....	17.881	188.146	190.106	15.0	1.0	-.1	-.1	-.9
New and used motor vehicles <sup>2</sup> .....	6.952	95.900	95.780	6.9	-.1	.4	.2	-.1
New vehicles .....	3.385	139.653	139.192	2.4	-.3	.1	.1	-.1
Used cars and trucks .....	2.944	141.657	142.173	16.7	.4	.7	.4	.2
Motor fuel .....	5.774	238.769	245.949	38.2	3.0	-1.2	-1.0	-2.7
Gasoline (all types) .....	5.530	238.583	245.626	38.4	3.0	-1.5	-.8	-2.4
Motor vehicle parts and equipment <sup>1</sup> .....	.472	135.573	135.914	1.0	.3	.2	-.1	.3
Motor vehicle maintenance and repair <sup>1</sup> .....	1.180	249.127	249.873	1.9	.3	.2	.3	.3
Public transportation .....	.766	242.942	246.535	7.9	1.5	-.2	.5	1.4
Medical care .....	5.261	388.330	389.050	3.9	.2	.6	.4	.3
Medical care commodities <sup>1</sup> .....	1.301	305.532	306.117	3.5	.2	.8	.4	.2
Medical care services .....	3.961	412.568	413.325	4.0	.2	.5	.4	.3
Professional services .....	2.195	329.294	330.228	3.1	.3	.1	.0	.3

See footnotes at end of table.

**Table 4. Consumer Price Index for Urban Wage Earners and Clerical Workers (CPI-W): U.S. city average, by expenditure category and commodity and service group-Continued**

(1982-84=100, unless otherwise noted)

CPI-W Expenditure category	Relative importance, December 2009	Unadjusted indexes		Unadjusted percent change to Apr. 2010 from—		Seasonally adjusted percent change from—		
		Mar. 2010	Apr. 2010	Apr. 2009	Mar. 2010	Jan. to Feb.	Feb. to Mar.	Mar. to Apr.
Hospital and related services <sup>3</sup>	1.339	604.070	605.497	7.8	0.2	1.3	1.1	0.3
Recreation <sup>2</sup>	6.031	110.073	110.342	-.8	.2	.0	-.1	.1
Video and audio <sup>2</sup>	2.046	100.547	100.568	-1.9	.0	-6	.1	-2
Education and communication <sup>2</sup>	6.175	124.455	124.559	2.0	.1	.2	.3	.2
Education <sup>2</sup>	2.327	193.965	194.275	5.1	.2	.6	.6	.5
Educational books and supplies	.196	505.642	504.436	6.2	-.2	.6	.2	.2
Tuition, other school fees, and childcare	2.131	545.120	546.192	5.0	.2	.6	.6	.5
Communication <sup>2</sup>	3.848	87.548	87.581	-.1	.0	-.1	.1	.0
Information and information processing <sup>1 2</sup>	3.715	85.362	85.394	-.3	.0	-.1	.1	.0
Telephone services <sup>1 2</sup>	2.906	102.048	102.132	.1	.1	-.5	.0	.1
Information technology, hardware and services <sup>1 5</sup>	.809	10.099	10.087	-2.9	-.1	1.0	.2	-.1
Personal computers and peripheral equipment <sup>6</sup>	.225	78.474	78.420	-8.2	-.1	-.7	.2	-.3
Other goods and services	3.919	405.641	405.786	2.8	.0	.0	.1	.0
Tobacco and smoking products <sup>1</sup>	1.397	792.452	793.243	6.1	.1	-.2	.2	.1
Personal care	2.522	204.294	204.294	.6	.0	.1	.0	-.1
Personal care products <sup>1</sup>	.733	162.417	161.604	-1.4	-.5	.2	.2	-.5
Personal care services <sup>1</sup>	.577	228.500	229.857	.8	.6	-.3	.1	.6
Miscellaneous personal services	1.019	353.667	354.593	2.8	.3	.2	.3	.1
<b>Commodity and service group</b>								
Commodities	43.589	177.591	178.269	5.5	.4	-.1	-.1	-.5
Food and beverages	16.425	218.502	218.730	.5	.1	.1	.2	.2
Commodities less food and beverages	27.164	155.417	156.268	8.6	.5	-.3	-.3	-.8
Nondurables less food and beverages	16.703	199.133	201.091	12.1	1.0	-.4	-.9	-1.7
Apparel	3.788	121.347	121.293	-1.2	.0	-.5	-.7	-.8
Nondurables less food, beverages, and apparel	12.915	251.912	255.140	16.8	1.3	-.5	-.6	-1.9
Durables	10.461	112.618	112.432	3.5	-.2	.1	.0	-.1
Services	56.411	255.634	255.796	.9	.1	.1	.2	.1
Rent of shelter <sup>4</sup>	29.868	233.250	233.210	-.4	.0	-.2	-.1	.0
Tenants' and household insurance <sup>1 2</sup>	.303	125.374	125.872	4.0	.4	-.1	.0	.4
Gas (piped) and electricity <sup>3</sup>	4.246	189.595	188.837	.1	-.4	.2	1.4	-.3
Water and sewer and trash collection services <sup>2</sup>	1.114	169.229	169.766	6.7	.3	.8	.5	.6
Household operations <sup>1 2</sup>	.369	152.065	152.329	-.4	.2	.0	.3	.2
Transportation services	5.918	257.728	258.501	3.9	.3	.4	.5	.3
Medical care services	3.961	412.568	413.325	4.0	.2	.5	.4	.3
Other services	10.631	294.564	295.327	1.9	.3	.1	.1	.3
<b>Special indexes</b>								
All items less food	84.667	212.535	213.000	3.4	.2	.0	.0	-.2
All items less shelter	69.829	205.441	206.048	4.4	.3	.0	.1	-.2
All items less medical care	94.739	206.420	206.841	2.8	.2	.0	.0	-.2
Commodities less food	28.256	157.742	158.569	8.3	.5	-.3	-.3	-.8
Nondurables less food	17.795	200.682	202.529	11.4	.9	-.4	-.8	-1.6
Nondurables less food and apparel	14.007	248.369	251.298	15.5	1.2	-.5	-.5	-1.7
Nondurables	33.128	209.370	210.526	6.1	.6	-.2	-.2	-.6
Services less rent of shelter <sup>4</sup>	26.543	249.464	249.847	2.5	.2	.3	.4	.3
Services less medical care services	52.450	244.586	244.719	.7	.1	.0	.1	.1
Energy	10.291	210.425	213.728	19.7	1.6	-.6	.0	-1.7
All items less energy	89.709	214.857	214.945	1.2	.0	.1	.1	.0
All items less food and energy	74.376	214.589	214.643	1.3	.0	.1	.0	.0
Commodities less food and energy commodities	22.211	146.319	146.094	2.0	-.2	.0	-.1	-.3
Energy commodities	6.045	241.599	248.594	37.3	2.9	-.2	-.9	-2.6
Services less energy services	52.165	262.830	263.097	1.0	.1	.1	.1	.1
Purchasing power of the consumer dollar (1982-84=\$1.00)	-	\$.468	\$.467	-	-	-	-	-
Purchasing power of the consumer dollar (1967=\$1.00)	-	\$.157	\$.157	-	-	-	-	-

<sup>1</sup> Not seasonally adjusted.

<sup>2</sup> Indexes on a December 1997=100 base.

<sup>3</sup> This index series was calculated using a Laspeyres estimator. All other item stratum index series were calculated using a geometric means estimator.

<sup>4</sup> Indexes on a December 1984=100 base

<sup>5</sup> Indexes on a December 1988=100 base.

<sup>6</sup> Indexes on a December 2007=100 base.

- Data not available.

NOTE: Index applies to a month as a whole, not to any specific date.

**Table 5. Consumer Price Index for Urban Wage Earners and Clerical Workers (CPI-W): Seasonally adjusted U.S. city average, by expenditure category and commodity and service group**

(1982-84=100, unless otherwise noted)

CPI-W	Seasonally adjusted indexes				Seasonally adjusted annual rate percent change for					
					3 months ended—			6 months ended—		
	Jan. 2010	Feb. 2010	Mar. 2010	Apr. 2010	July 2009	Oct. 2009	Jan. 2010	Apr. 2010	Oct. 2009	Apr. 2010
<b>Expenditure category</b>										
All items .....	213.638	213.644	213.775	213.475	4.6	3.9	3.3	-0.3	4.3	1.5
Food and beverages .....	217.876	218.037	218.460	218.864	-1.6	.1	1.8	1.8	-8	1.8
Food .....	217.376	217.593	218.080	218.518	-2.0	.0	1.7	2.1	-1.0	1.9
Food at home .....	213.166	213.428	214.314	214.833	-4.1	-1.4	2.2	3.2	-2.7	2.7
Cereals and bakery products .....	251.835	251.687	251.556	250.672	-1.4	.1	-.9	-1.8	-6	-1.4
Meats, poultry, fish, and eggs .....	201.172	202.401	202.550	205.451	-8.5	-3.5	2.9	8.8	-6.0	5.8
Dairy and related products <sup>1</sup> .....	197.663	197.583	197.370	195.958	-7.8	5.0	7.5	-3.4	-1.6	1.9
Fruits and vegetables .....	270.176	270.020	279.327	278.948	-2.8	-9.3	7.3	13.6	-6.1	10.4
Nonalcoholic beverages and beverage materials .....	162.068	161.550	161.684	162.122	-1.4	-.5	.0	.1	-1.0	.1
Other food at home .....	190.215	190.493	190.002	190.036	-1.5	1.6	-.5	-.4	.0	-.4
Sugar and sweets .....	197.745	200.465	198.278	198.863	-3.1	6.6	2.2	2.3	1.6	2.2
Fats and oils .....	200.194	200.243	198.210	200.301	-4.5	-3.1	1.5	.2	-3.8	.9
Other foods .....	205.030	204.886	204.931	204.531	-.6	1.4	-1.3	-1.0	.4	-1.1
Other miscellaneous foods <sup>1 2</sup> .....	122.051	121.482	122.543	122.712	-3.2	1.8	-2.0	2.2	-.7	.1
Food away from home <sup>1</sup> .....	225.015	225.168	225.072	225.395	.8	1.8	1.1	.7	1.3	.9
Other food away from home <sup>1 2</sup> .....	157.670	158.826	159.023	159.088	6.6	.0	2.0	3.6	3.3	2.8
Alcoholic beverages .....	223.748	223.101	222.599	222.504	4.1	1.9	1.8	-2.2	3.0	-.2
Housing .....	212.818	212.780	212.977	212.824	-.8	.4	-.4	.0	-.2	-.2
Shelter .....	241.969	241.916	241.831	241.857	.5	.1	-1.6	-.2	.3	-.9
Rent of primary residence <sup>3</sup> .....	247.305	247.213	247.433	247.447	.6	-.6	-.3	.2	.0	.0
Lodging away from home <sup>2</sup> .....	130.907	131.519	132.046	133.683	-5.2	5.4	-12.6	8.8	.0	-2.5
Owners' equivalent rent of residences <sup>3 4</sup> .....	232.351	232.286	232.065	232.020	.8	.0	-.8	-.6	.4	-.7
Owners' equivalent rent of primary residence <sup>3 4</sup> .....	232.351	232.286	232.066	232.021	.8	.0	-.8	-.6	.4	-.7
Tenants' and household insurance <sup>1 2</sup> .....	125.299	125.367	125.374	125.872	2.3	3.3	8.5	1.8	2.8	5.1
Fuels and utilities .....	211.617	212.146	214.560	214.347	-7.5	4.8	6.7	5.3	-1.5	6.0
Household energy .....	187.075	187.283	189.703	189.210	-10.4	4.4	7.0	4.6	-3.3	5.8
Fuel oil and other fuels <sup>1</sup> .....	284.061	281.157	279.384	280.770	1.6	24.5	77.3	-4.6	12.5	30.1
Gas (piped) and electricity <sup>3</sup> .....	191.039	191.397	194.113	193.513	-11.0	3.3	3.6	5.3	-4.1	4.5
Water and sewer and trash collection services <sup>2</sup> .....	167.045	168.416	169.271	170.225	6.7	6.8	5.6	7.8	6.7	6.7
Household furnishings and operations .....	123.590	123.126	122.564	121.744	-.8	-2.9	-1.4	-5.8	-1.9	-3.7
Household operations <sup>1 2</sup> .....	151.499	151.535	152.065	152.329	-1.0	2.1	-4.8	2.2	.5	-1.4
Apparel .....	120.099	119.483	118.685	117.754	4.3	-.7	-.5	-7.6	1.8	-4.1
Men's and boys' apparel .....	112.252	111.820	110.643	110.263	-1.1	-2.3	-4.2	-6.9	-1.7	-5.6
Women's and girls' apparel .....	108.554	107.988	107.167	105.263	8.6	-1.3	1.0	-11.6	3.6	-5.5
Infants' and toddlers' apparel .....	118.441	117.058	117.615	117.760	2.4	-3.5	4.3	-2.3	-.6	1.0
Footwear .....	129.256	128.706	127.183	127.125	5.4	1.3	2.6	-6.4	3.3	-2.0
Transportation .....	193.144	192.920	192.779	191.311	27.8	20.1	16.3	-3.7	23.9	5.8
Private transportation .....	190.031	189.821	189.636	188.020	29.0	20.3	16.8	-4.2	24.6	5.8
New and used motor vehicles <sup>2</sup> .....	95.343	95.710	95.930	95.843	5.8	12.0	8.0	2.1	8.9	5.0
New vehicles .....	138.596	138.749	138.848	138.762	7.3	3.1	-1.1	.5	5.2	-.3
Used cars and trucks .....	140.866	141.875	142.513	142.767	7.7	30.7	24.8	5.5	18.7	14.7
Motor fuel .....	249.602	246.705	244.355	237.728	114.8	46.2	41.1	-17.7	77.2	7.8
Gasoline (all types) .....	249.318	245.597	243.680	237.823	120.3	37.4	46.3	-17.2	74.0	10.1
Motor vehicle parts and equipment <sup>1</sup> .....	135.383	135.694	135.573	135.914	-2.4	-.1	4.9	1.6	-1.3	3.2
Motor vehicle maintenance and repair <sup>1</sup> .....	247.975	248.479	249.127	249.873	.4	4.0	.3	3.1	2.2	1.7
Public transportation .....	243.274	242.675	243.933	247.394	3.8	16.2	5.0	6.9	9.8	6.0
Medical care .....	383.504	385.728	387.193	388.188	2.7	3.7	4.1	5.0	3.2	4.5
Medical care commodities <sup>1</sup> .....	301.890	304.320	305.532	306.117	.2	5.3	2.9	5.7	2.8	4.3
Medical care services .....	407.372	409.435	410.965	412.109	3.5	3.1	4.5	4.7	3.3	4.6
Professional services .....	327.911	328.390	328.391	329.450	3.6	2.8	3.9	1.9	3.2	2.9

See footnotes at end of table.



**Table 5. Consumer Price Index for Urban Wage Earners and Clerical Workers (CPI-W): Seasonally adjusted U.S. city average, by expenditure category and commodity and service group-Continued**

(1982-84=100, unless otherwise noted)

CPI-W	Seasonally adjusted indexes				Seasonally adjusted annual rate percent change for					
					3 months ended—			6 months ended—		
	Jan. 2010	Feb. 2010	Mar. 2010	Apr. 2010	July 2009	Oct. 2009	Jan. 2010	Apr. 2010	Oct. 2009	Apr. 2010
<b>Expenditure category</b>										
Hospital and related services <sup>3</sup> .....	585.929	593.708	600.485	602.551	5.8	5.8	8.0	11.8	5.8	9.9
Recreation <sup>2</sup> .....	110.176	110.176	110.035	110.165	1.2	-2.2	-1.9	.0	-5	-1.0
Video and audio <sup>2</sup> .....	100.793	100.171	100.265	100.080	-2	-4.6	.0	-2.8	-2.4	-1.4
Education and communication <sup>2</sup> .....	124.142	124.338	124.650	124.905	2.6	1.5	1.3	2.5	2.0	1.9
Education <sup>2</sup> .....	192.430	193.654	194.762	195.692	5.7	3.7	4.1	7.0	4.7	5.5
Educational books and supplies .....	501.581	504.554	505.419	506.406	10.4	4.5	6.2	3.9	7.4	5.0
Tuition, other school fees, and childcare .....	540.811	544.275	547.590	550.348	5.2	3.6	3.9	7.2	4.4	5.5
Communication <sup>2</sup> .....	87.616	87.501	87.550	87.583	.5	.0	-.8	-.2	.2	-.5
Information and information processing <sup>1 2</sup> .....	85.433	85.314	85.362	85.394	.0	.0	-1.0	-.2	.0	-.6
Telephone services <sup>1 2</sup> .....	102.504	102.038	102.048	102.132	2.1	.9	-1.2	-1.4	1.5	-1.3
Information technology, hardware and services <sup>1 5</sup> .....	9.978	10.077	10.099	10.087	-10.1	-4.6	-.7	4.4	-7.4	1.8
Personal computers and peripheral equipment <sup>6</sup> .....	77.929	77.391	77.573	77.339	-14.5	-11.3	-3.4	-3.0	-12.9	-3.2
Other goods and services .....	404.888	404.813	405.258	405.156	4.4	2.9	3.5	.3	3.6	1.9
Tobacco and smoking products <sup>1</sup> .....	791.959	790.710	792.452	793.243	11.2	5.7	7.0	.7	8.4	3.8
Personal care .....	203.775	203.895	203.994	203.801	.1	1.0	1.3	-.1	.6	.7
Personal care products <sup>1</sup> .....	161.689	162.073	162.417	161.604	-2.8	-1.3	-1.4	-.2	-2.0	-.8
Personal care services <sup>1</sup> .....	228.793	228.169	228.500	229.857	-1.1	2.1	.2	1.9	.5	1.0
Miscellaneous personal services .....	352.090	352.853	353.940	354.179	2.3	2.6	3.8	2.4	2.5	3.1
<b>Commodity and service group</b>										
Commodities .....	178.233	177.989	177.800	176.982	10.2	7.1	7.5	-2.8	8.7	2.2
Food and beverages .....	217.876	218.037	218.460	218.864	-1.6	.1	1.8	1.8	-.8	1.8
Commodities less food and beverages .....	156.580	156.171	155.727	154.413	18.3	11.5	11.0	-5.4	14.8	2.5
Nondurables less food and beverages .....	202.280	201.470	199.698	196.223	32.4	13.7	18.4	-11.5	22.7	2.4
Apparel .....	120.099	119.483	118.685	117.754	4.3	-.7	-.5	-7.6	1.8	-4.1
Nondurables less food, beverages, and apparel .....	257.262	255.925	254.457	249.714	44.3	18.9	22.1	-11.2	31.0	4.1
Durables .....	112.382	112.465	112.488	112.342	2.9	7.1	4.5	-.1	4.9	2.1
Services .....	255.157	255.440	255.973	256.225	.5	1.5	.2	1.7	1.0	.9
Rent of shelter <sup>4</sup> .....	233.607	233.241	232.894	232.865	.3	.4	-1.0	-1.3	.4	-1.1
Tenants' and household insurance <sup>1 2</sup> .....	125.299	125.367	125.374	125.872	2.3	3.3	8.5	1.8	2.8	5.1
Gas (piped) and electricity <sup>3</sup> .....	191.399	191.397	194.113	193.513	-11.0	3.3	3.6	5.3	-4.1	4.5
Water and sewer and trash collection services <sup>2</sup> .....	167.045	168.416	169.271	170.225	6.7	6.8	5.6	7.8	6.7	6.7
Household operations <sup>1 2</sup> .....	151.499	151.535	152.065	152.329	-1.0	2.1	-4.8	2.2	.5	-1.4
Transportation services .....	255.588	256.694	258.012	258.832	1.7	6.9	1.8	5.2	4.3	3.5
Medical care services .....	407.372	409.435	410.965	412.109	3.5	3.1	4.5	4.7	3.3	4.6
Other services .....	294.133	294.301	294.699	295.503	3.3	1.2	1.3	1.9	2.3	1.6
<b>Special indexes</b>										
All items less food .....	212.790	212.759	212.827	212.397	5.9	4.7	3.6	-.7	5.3	1.4
All items less shelter .....	205.615	205.643	205.853	205.432	6.5	5.7	5.5	-.4	6.1	2.5
All items less medical care .....	206.680	206.620	206.710	206.373	4.7	3.9	3.3	-.6	4.3	1.3
Commodities less food .....	158.886	158.469	158.022	156.736	17.7	11.1	10.7	-5.3	14.4	2.4
Nondurables less food .....	203.681	202.891	201.191	197.896	30.3	12.9	17.4	-10.9	21.3	2.3
Nondurables less food and apparel .....	253.287	252.038	250.660	246.339	40.4	16.8	21.1	-10.5	28.1	4.1
Nondurables .....	210.553	210.177	209.771	208.423	12.6	8.8	7.8	-4.0	10.7	1.7
Services less rent of shelter <sup>4</sup> .....	248.589	249.271	250.360	251.049	.1	3.4	2.6	4.0	1.7	3.3
Services less medical care services .....	244.523	244.557	244.863	245.161	.0	1.6	.2	1.0	.8	.6
Energy .....	216.617	215.259	215.253	211.677	40.6	25.7	25.4	-8.8	32.9	6.9
All items less energy .....	214.235	214.406	214.554	214.650	1.3	1.7	1.0	.8	1.5	.9
All items less food and energy .....	213.979	214.141	214.221	214.247	2.0	2.0	.8	.5	2.0	.7
Commodities less food and energy commodities .....	145.835	145.848	145.661	145.265	3.3	3.5	2.9	-1.6	3.4	.7
Energy commodities .....	252.253	249.339	246.999	240.647	107.3	45.2	42.5	-17.2	73.5	8.7
Services less energy services .....	262.136	262.409	262.692	263.042	1.5	1.4	-.1	1.4	1.5	.7

<sup>1</sup> Not seasonally adjusted.

<sup>2</sup> Indexes on a December 1997=100 base.

<sup>3</sup> This index series was calculated using a Laspeyres estimator. All other item stratum index series were calculated using a geometric means estimator.

<sup>4</sup> Indexes on a December 1984=100 base

<sup>5</sup> Indexes on a December 1988=100 base.

<sup>6</sup> Indexes on a December 2007=100 base.

NOTE: Index applies to a month as a whole, not to any specific date.

**Table 6. Consumer Price Index for Urban Wage Earners and Clerical Workers (CPI-W): Selected areas, all items index**

(1982-84=100, unless otherwise noted)

CPI-W	Pricing schedule 1	All items									
		Indexes				Percent change to Apr.2010 from—			Percent change to Mar.2010 from—		
		Jan. 2010	Feb. 2010	Mar. 2010	Apr. 2010	Apr. 2009	Feb. 2010	Mar. 2010	Mar. 2009	Jan. 2010	Feb. 2010
U.S. city average .....	M	212.568	212.544	213.525	213.958	2.9	0.7	0.2	3.0	0.5	0.5
<b>Region and area size<sup>2</sup></b>											
Northeast urban .....	M	229.744	229.874	230.622	231.109	3.1	.5	.2	3.1	.4	.3
Size A - More than 1,500,000 .....	M	229.919	230.099	230.819	231.338	2.7	.5	.2	2.8	.4	.3
Size B/C - 50,000 to 1,500,000 <sup>3</sup> .....	M	139.364	139.379	139.869	140.126	3.8	.5	.2	3.9	.4	.4
Midwest urban .....	M	202.180	202.044	202.966	203.426	3.3	.7	.2	3.3	.4	.5
Size A - More than 1,500,000 .....	M	201.957	201.758	202.639	203.056	3.0	.6	.2	2.9	.3	.4
Size B/C - 50,000 to 1,500,000 <sup>3</sup> .....	M	132.502	132.507	133.140	133.540	3.5	.8	.3	3.6	.5	.5
Size D - Nonmetropolitan (less than 50,000) .....	M	201.414	201.118	202.072	202.263	3.9	.6	.1	4.0	.3	.5
South urban .....	M	207.405	207.325	208.621	209.017	3.2	.8	.2	3.4	.6	.6
Size A - More than 1,500,000 .....	M	209.619	209.288	210.613	211.068	2.6	.9	.2	2.7	.5	.6
Size B/C - 50,000 to 1,500,000 <sup>3</sup> .....	M	132.508	132.528	133.388	133.695	3.4	.9	.2	3.7	.7	.6
Size D - Nonmetropolitan (less than 50,000) .....	M	213.984	214.172	215.205	215.006	3.9	.4	-.1	4.6	.6	.5
West urban .....	M	214.664	214.710	215.457	215.873	2.1	.5	.2	2.3	.4	.3
Size A - More than 1,500,000 .....	M	216.905	216.850	217.700	218.103	2.1	.6	.2	2.2	.4	.4
Size B/C - 50,000 to 1,500,000 <sup>3</sup> .....	M	133.238	133.325	133.675	133.993	2.2	.5	.2	2.3	.3	.3
<b>Size classes</b>											
A <sup>4</sup> .....	M	196.606	196.516	197.377	197.786	2.6	.6	.2	2.6	.4	.4
B/C <sup>3</sup> .....	M	133.589	133.619	134.274	134.594	3.2	.7	.2	3.4	.5	.5
D .....	M	208.297	208.368	209.326	209.327	3.4	.5	.0	3.9	.5	.5
<b>Selected local areas<sup>5</sup></b>											
Chicago-Gary-Kenosha, IL-IN-WI .....	M	205.529	205.627	206.381	206.466	2.9	.4	.0	3.1	.4	.4
Los Angeles-Riverside-Orange County, CA ...	M	217.290	217.090	218.157	218.475	2.4	.6	.1	2.4	.4	.5
New York-Northern N.J.-Long Island, NY-NJ-CT-PA .....	M	234.067	234.153	235.240	235.750	2.7	.7	.2	2.7	.5	.5
Boston-Brockton-Nashua, MA-NH-ME-CT .....	1	237.999	-	238.388	-	-	-	-	2.8	.2	-
Cleveland-Akron, OH .....	1	194.529	-	194.852	-	-	-	-	2.5	.2	-
Dallas-Fort Worth, TX .....	1	205.456	-	205.351	-	-	-	-	2.3	-.1	-
Washington-Baltimore, DC-MD-VA-WV <sup>6</sup> .....	1	141.155	-	141.782	-	-	-	-	3.1	.4	-
Atlanta, GA .....	2	-	201.407	-	203.095	2.7	.8	-	-	-	-
Detroit-Ann Arbor-Flint, MI .....	2	-	198.913	-	201.003	1.9	1.1	-	-	-	-
Houston-Galveston-Brazoria, TX .....	2	-	190.351	-	192.447	2.9	1.1	-	-	-	-
Miami-Fort Lauderdale, FL .....	2	-	221.074	-	220.633	1.3	-.2	-	-	-	-
Philadelphia-Wilmington-Atlantic City, PA-NJ-DE-MD .....	2	-	226.539	-	227.325	3.0	.3	-	-	-	-
San Francisco-Oakland-San Jose, CA .....	2	-	222.049	-	223.821	2.4	.8	-	-	-	-
Seattle-Tacoma-Bremerton, WA .....	2	-	221.215	-	222.309	1.0	.5	-	-	-	-

<sup>1</sup> Foods, fuels, and several other items priced every month in all areas; most other goods and services priced as indicated:

M - Every month.

1 - January, March, May, July, September, and November.

2 - February, April, June, August, October, and December.

<sup>2</sup> Regions defined as the four Census regions. See technical notes.

<sup>3</sup> Indexes on a December 1996=100 base.

<sup>4</sup> Indexes on a December 1986=100 base.

<sup>5</sup> In addition, the following metropolitan areas are published semiannually and appear in Tables 34 and 39 of the January and July issues of the CPI Detailed Report: Anchorage, AK; Cincinnati-Hamilton, OH-KY-IN; Denver-Boulder-Greeley, CO; Honolulu, HI; Kansas City, MO-KS; Milwaukee-Racine, WI; Minneapolis-St. Paul, MN-WI; Phoenix-Mesa, AZ; Pittsburgh, PA; Portland-Salem, OR-WA; St. Louis, MO-IL; San Diego, CA;

Tampa-St. Petersburg-Clearwater, FL.

<sup>6</sup> Indexes on a November 1996=100 base.

- Data not available.

NOTE: Local area indexes are byproducts of the national CPI program. Each local index has a smaller sample size than the national index and is, therefore, subject to substantially more sampling and other measurement error. As a result, local area indexes show greater volatility than the national index, although their long-term trends are similar. Therefore, the Bureau of Labor Statistics strongly urges users to consider adopting the national average CPI for use in their escalator clauses.

NOTE: Index applies to a month as a whole, not to any specific date.

**Table 7. Chained Consumer Price Index for All Urban Consumers (C-CPI-U): U.S. city average, by expenditure category and commodity and service group**

(December 1999=100, unless otherwise noted)

C-CPI-U	Relative importance, 2007-2008	Unadjusted indexes		Unadjusted percent change to Apr. 2010 from—	
		Mar. 2010	Apr. 2010	Apr. 2009	Mar. 2010
		Expenditure category			
All items <sup>1</sup>	100.000	R126.162	R126.375	2.3	0.2
Food and beverages	14.519	128.059	128.146	.4	.1
Food	13.493	128.042	128.147	.3	.1
Food at home	7.780	123.224	123.283	-2	.0
Food away from home	5.712	134.591	134.761	1.0	.1
Alcoholic beverages	1.027	128.735	128.590	1.0	-.1
Housing <sup>2</sup>	42.074	R128.351	R128.174	-6	-.1
Shelter	32.119	130.877	130.868	-7	.0
Fuels and utilities <sup>3</sup>	5.231	R158.501	R157.710	2.2	-.5
Household furnishings and operations	4.724	94.131	93.540	-3.1	-.6
Apparel	3.772	90.965	91.002	-1.3	.0
Transportation	17.199	131.306	132.674	14.6	1.0
Private transportation	16.013	132.155	133.457	15.1	1.0
Public transportation	1.186	120.161	122.338	8.5	1.8
Medical care	6.294	149.981	150.182	3.3	.1
Medical care commodities	1.570	132.364	132.561	3.3	.1
Medical care services	4.723	156.442	156.645	3.3	.1
Recreation	6.625	103.246	103.622	-2.0	.4
Education and communication	6.288	111.902	111.983	1.6	.1
Education	2.804	181.331	181.643	4.8	.2
Communication	3.484	73.321	73.315	-1.0	.0
Other goods and services	3.229	137.391	137.422	1.8	.0
<b>Commodity and service group</b>					
Services <sup>4</sup>	59.383	R134.980	R135.063	.7	.1
Commodities	40.617	115.341	115.718	4.8	.3
Durables	10.376	81.460	81.266	1.1	-.2
Nondurables	30.241	132.997	133.690	6.2	.5
All items less food and energy	76.901	119.777	119.823	.6	.0
Energy <sup>5</sup>	9.606	R186.931	R189.449	20.4	1.3

<sup>1</sup> Revised indexes: Feb. 2010=125.604, Jan. 2010=125.628.

<sup>2</sup> Revised indexes: Feb. 2010=128.240, Jan. 2010=128.296.

<sup>3</sup> Revised indexes: Feb. 2010=157.467, Jan. 2010=157.973.

<sup>4</sup> Revised indexes: Feb. 2010=134.773, Jan. 2010=134.619.

<sup>5</sup> Revised indexes: Feb. 2010=181.912, Jan. 2010=185.213.

R Revised.

Indexes for 2010 are initial estimates. Indexes for 2009 are interim adjustments.

NOTE: Index applies to a month as a whole, not to any specific date.