

Transmission of material in this release is embargoed until  
8:30 a.m. (EDT) Thursday, June 14, 2012

USDL-12-1183

Technical information: (202) 691-7000 • Reed.Steve@bls.gov • www.bls.gov/cpi  
Media Contact: (202) 691-5902 • PressOffice@bls.gov

### CONSUMER PRICE INDEX – MAY 2012

The Consumer Price Index for All Urban Consumers (CPI-U) decreased 0.3 percent in May on a seasonally adjusted basis, the U.S. Bureau of Labor Statistics reported today. Over the last 12 months, the all items index increased 1.7 percent before seasonal adjustment.

The gasoline index declined 6.8 percent in May, leading to a sharp decrease in the energy index and the decline in the all items index. The indexes for natural gas and fuel oil declined as well, though the electricity index increased. The food index was unchanged, with a slight decline in the index for food at home offsetting an increase in the food away from home index.

The index for all items less food and energy rose 0.2 percent in May, the third consecutive such increase. The indexes contributing to the increase were largely the same ones as in April: shelter, medical care, used cars and trucks, apparel, airline fares, and new vehicles. The indexes for household furnishings and operations and for tobacco declined.

The 12-month change in the index for all items was 1.7 percent in May; this figure has been declining steadily since its 3.9 percent recent peak in September 2011. The decline has been driven mostly by the energy index, which decreased 3.9 percent over the last 12 months. This was its first 12-month decline since October 2009. The 12-month change in the food index, which was 4.7 percent as recently as December, fell to 2.8 percent in May. The 12-month change in the index for all items less food and energy was 2.3 percent in May, the same figure as in April and March.

**Chart 1. One-month percent change in CPI for All Urban Consumers (CPI-U), seasonally adjusted, May 2011 - May 2012**  
Percent change

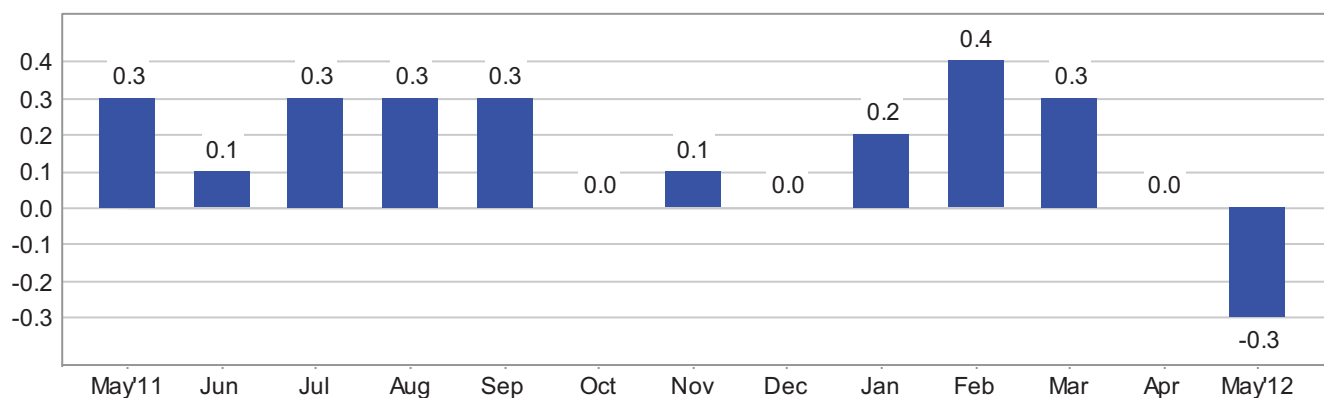


Chart 2. 12-month percent change in CPI for All Urban Consumers (CPI-U), not seasonally adjusted, May 2011 - May 2012

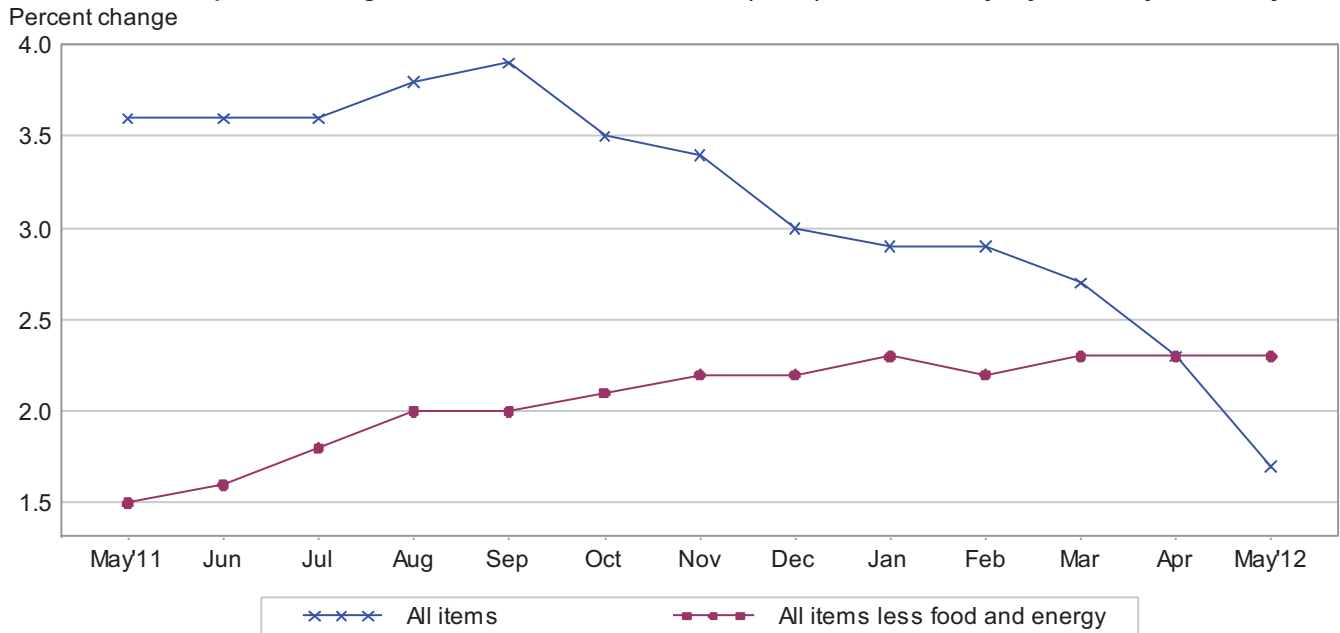


Table A. Percent changes in CPI for All Urban Consumers (CPI-U): U.S. city average

	Seasonally adjusted changes from preceding month							Un-adjusted 12-mos. ended May 2012
	Nov. 2011	Dec. 2011	Jan. 2012	Feb. 2012	Mar. 2012	Apr. 2012	May 2012	
All items .....	.1	.0	.2	.4	.3	.0	-.3	1.7
Food .....	.1	.2	.2	.0	.2	.2	.0	2.8
Food at home .....	.0	.2	.0	.0	.1	.2	-.1	2.7
Food away from home <sup>1</sup> .....	.3	.2	.4	.1	.2	.3	.2	2.9
Energy .....	-.5	-1.3	.2	3.2	.9	-1.7	-4.3	-3.9
Energy commodities .....	-.6	-2.0	.9	5.7	1.7	-2.6	-6.4	-3.7
Gasoline (all types) .....	-.9	-2.1	.9	6.0	1.7	-2.6	-6.8	-4.0
Fuel oil <sup>1</sup> .....	2.7	-1.0	1.4	2.8	2.7	-1.1	-2.8	-1.1
Energy services .....	-.4	-.2	-.8	-.8	-.4	-.2	-.7	-3.6
Electricity .....	.2	-.1	.0	.0	-.8	.2	.3	.2
Utility (piped) gas service .....	-2.6	-.6	-2.9	-3.4	.9	-1.8	-4.1	-14.9
All items less food and energy .....	.2	.1	.2	.1	.2	.2	.2	2.3
Commodities less food and energy commodities .....	.1	-.1	.2	.1	.2	.2	.2	1.6
New vehicles .....	-.2	-.2	.0	.6	.2	.4	.2	1.3
Used cars and trucks .....	-.4	-.7	-1.0	-.2	1.3	1.5	1.0	3.5
Apparel .....	.5	-.1	.9	-.9	.5	.4	.4	4.4
Medical care commodities <sup>1</sup> .....	.2	.2	.6	.8	.4	.0	.0	2.7
Services less energy services .....	.2	.2	.2	.1	.2	.3	.2	2.5
Shelter .....	.2	.2	.2	.2	.2	.2	.2	2.3
Transportation services .....	.0	.1	.0	-.2	.3	.5	.3	1.9
Medical care services .....	.4	.4	.2	.0	.3	.4	.5	3.9

<sup>1</sup> Not seasonally adjusted.

## **Consumer Price Index Data for May 2012**

### **Food**

The food index was unchanged in May after increasing 0.2 percent in April. The index for food at home fell 0.1 percent in May as four of the six major grocery store food groups declined. The index for nonalcoholic beverages fell 0.6 percent in May while the index for meats, poultry, fish, and eggs declined 0.5 percent; both indexes rose in April. The index for dairy and related products declined 0.4 percent in May, its fourth consecutive decline, while the cereals and bakery products index decreased 0.1 percent. The fruits and vegetables index, in contrast, rose 0.4 percent in May, while the index for other food at home rose 0.3 percent, its sixth consecutive increase. The food at home index has risen 2.7 percent over the last 12 months, with the fruits and vegetables index declining 0.4 percent over that span and the other five groups increasing from 1.2 percent (nonalcoholic beverages) to 4.8 percent (other food at home). The index for food away from home rose 0.2 percent in May and has increased 2.9 percent over the last 12 months.

### **Energy**

The energy index declined 4.3 percent in May after a 1.7 percent decline in April. The gasoline index fell 6.8 percent, its largest one month decline since December 2008. (Before seasonal adjustment, gasoline prices decreased 3.6 percent in May.) The fuel oil index also continued to fall, declining 2.8 percent. The index for energy services decreased for the eighth consecutive month, falling 0.7 percent as a 4.1 percent decline in the index for natural gas more than offset a 0.3 percent increase in the index for electricity. Over the past 12 months, the electricity index has edged up 0.2 percent but the other major energy indexes have declined. The gasoline index has fallen 4.0 percent, the fuel oil index has declined 1.1 percent, and the index for natural gas has decreased 14.9 percent.

### **All items less food and energy**

The index for all items less food and energy increased 0.2 percent in May, the same increase as in April. The index for shelter rose 0.2 percent for the eighth month in a row, with the rent index up 0.2 percent and the index for owners' equivalent rent up 0.1 percent. The index for lodging away from home rose 1.5 percent in May after declining in April. The index for medical care rose 0.4 percent, its largest increase since November, as the index for hospital services rose 0.6 percent for the second month in a row. The index for used cars and trucks posted its third consecutive significant increase, rising 1.0 percent. The apparel index also continued to rise, repeating its April increase of 0.4 percent. The index for airline fares, up 2.1 percent in April, rose 1.0 percent in May, while the new vehicles index increased for the fourth month in a row, rising 0.2 percent. The indexes for recreation and personal care each rose 0.1 percent in May. Among the few indexes to decline were household furnishings and operations, which declined 0.3 percent, and tobacco, which fell 0.2 percent.

The index for all items less food and energy has risen 2.3 percent over the last 12 months, the same figure as the previous two months. The shelter component also has risen 2.3 percent over that span. Indexes rising at a slower rate include household furnishings and operations (0.6 percent), recreation (0.9 percent), and new vehicles (1.3 percent). Indexes rising more rapidly include apparel (4.4 percent), medical care (3.6 percent), and used cars and trucks (3.5 percent).

### **Not seasonally adjusted CPI measures**

The Consumer Price Index for All Urban Consumers (CPI-U) increased 1.7 percent over the last 12 months to an index level of 229.815 (1982-84=100). For the month, the index decreased 0.1 percent prior to seasonal adjustment.

The Consumer Price Index for Urban Wage Earners and Clerical Workers (CPI-W) increased 1.6 percent over the last 12 months to an index level of 226.600 (1982-84=100). For the month, the index decreased 0.2 percent prior to seasonal adjustment.

The Chained Consumer Price Index for All Urban Consumers (C-CPI-U) increased 1.6 percent over the last 12 months. For the month, the index decreased 0.1 percent on a not seasonally adjusted basis. Please note that the indexes for the post-2010 period are subject to revision.

---

**The Consumer Price Index for June 2012 is scheduled to be released on Tuesday, July 17, 2012, at 8:30 a.m. (EDT).**

## **Facilities for Sensory Impaired**

Information from this release will be made available to sensory impaired individuals upon request. Voice phone: 202-691-5200, Federal Relay Services: 1-800-877-8339.

## **Brief Explanation of the CPI**

The Consumer Price Index (CPI) is a measure of the average change in prices over time of goods and services purchased by households. The Bureau of Labor Statistics publishes CPIs for two population groups: (1) the CPI for Urban Wage Earners and Clerical Workers (CPI-W), which covers households of wage earners and clerical workers that comprise approximately 29 percent of the total population and (2) the CPI for All Urban Consumers (CPI-U) and the Chained CPI for All Urban Consumers (C-CPI-U), which cover approximately 88 percent of the total population and include in addition to wage earners and clerical worker households, groups such as professional, managerial, and technical workers, the self-employed, short-term workers, the unemployed, and retirees and others not in the labor force.

The CPIs are based on prices of food, clothing, shelter, and fuels, transportation fares, charges for doctors' and dentists' services, drugs, and other goods and services that people buy for day-to-day living. Prices are collected each month in 87 urban areas across the country from about 4,000 housing units and approximately 26,000 retail establishments-department stores, supermarkets, hospitals, filling stations, and other types of stores and service establishments. All taxes directly associated with the purchase and use of items are included in the index. Prices of fuels and a few other items are obtained every month in all 87 locations. Prices of most other commodities and services are collected every month in the three largest geographic areas and every other month in other areas. Prices of most goods and services are obtained by personal visits or telephone calls of the Bureau's trained representatives.

In calculating the index, price changes for the various items in each location are averaged together with weights, which represent their importance in the spending of the appropriate population group. Local data are then combined to obtain a U.S. city average. For the CPI-U and CPI-W separate indexes are also published by size of city, by region of the country, for cross-classifications of regions and population-size classes, and for 27 local areas. Area indexes do not measure differences in the level of prices among cities; they only measure the average change in prices for each area since the base period. For the C-CPI-U data are issued only at the national level. It is important to note that the CPI-U and CPI-W are considered final when released, but the C-CPI-U is issued in preliminary form and subject to two annual revisions.

The index measures price change from a designed reference date. For the CPI-U and the CPI-W the reference base is 1982-84 equals 100. The reference base for the C-CPI-U is December 1999 equals 100. An increase of 16.5 percent from the reference base, for example, is shown as 116.500. This change can also be expressed in dollars as follows: the price of a base period market basket of goods and services in the CPI has risen from \$10 in 1982-84 to \$11.65.

For further details visit the CPI home page on the Internet at <http://www.bls.gov/cpi/> or contact our CPI Information and Analysis Section on (202) 691-7000.

## Note on Sampling Error in the Consumer Price Index

The CPI is a statistical estimate that is subject to sampling error because it is based upon a sample of retail prices and not the complete universe of all prices. BLS calculates and publishes estimates of the 1-month, 2-month, 6-month and 12-month percent change standard errors annually, for the CPI-U. These standard error estimates can be used to construct confidence intervals for hypothesis testing. For example, the estimated standard error of the 1 month percent change is 0.03 percent for the U.S. All Items Consumer Price Index. This means that if we repeatedly sample from the universe of all retail prices using the same methodology, and estimate a percentage change for each sample, then 95% of these estimates would be within 0.06 percent of the 1 month percentage change based on all retail prices. For example, for a 1-month change of 0.2 percent in the All Items CPI for All Urban Consumers, we are 95 percent confident that the actual percent change based on all retail prices would fall between 0.14 and 0.26 percent. For the latest data, including information on how to use the estimates of standard error, see “Variance Estimates for Price Changes in the Consumer Price Index, January-December 2011”. These data are available on the CPI home page (<http://www.bls.gov/cpi>), or by using the following link <http://www.bls.gov/cpi/cpivar2011.pdf>

## Calculating Index Changes

Movements of the indexes from one month to another are usually expressed as percent changes rather than changes in index points, because index point changes are affected by the level of the index in relation to its base period while percent changes are not. The example below illustrates the computation of index point and percent changes.

Percent changes for 3-month and 6-month periods are expressed as annual rates and are computed according to the standard formula for compound growth rates. These data indicate what the percent change would be if the current rate were maintained for a 12-month period.

### Index Point Change

CPI	202.416
Less previous index	201.800
Equals index point change	.616

### Percent Change

Index point difference	.616
Divided by the previous index	201.800
Equals	0.003
Results multiplied by one hundred	0.003x100
Equals percent change	0.3

## Regions Defined

The states in the four regions are listed below.

The Northeast--Connecticut, Maine, Massachusetts, New Hampshire, New York, New Jersey, Pennsylvania, Rhode Island, and Vermont.

The Midwest--Illinois, Indiana, Iowa, Kansas, Michigan, Minnesota, Missouri, Nebraska, North Dakota, Ohio, South Dakota, and Wisconsin.

The South--Alabama, Arkansas, Delaware, Florida, Georgia, Kentucky, Louisiana, Maryland, Mississippi, North Carolina, Oklahoma, South Carolina, Tennessee, Texas, Virginia, West Virginia, and the District of Columbia.

The West--Alaska, Arizona, California, Colorado, Hawaii, Idaho, Montana, Nevada, New Mexico, Oregon, Utah, Washington, and Wyoming.

## A Note on Seasonally Adjusted and Unadjusted Data

Because price data are used for different purposes by different groups, the Bureau of Labor Statistics publishes seasonally adjusted as well as unadjusted changes each month.

For analyzing general price trends in the economy, seasonally adjusted changes are usually preferred since they eliminate the effect of changes that normally occur at the same time and in about the same magnitude every year--such as price movements resulting from changing climatic conditions, production cycles, model changeovers, holidays, and sales.

The unadjusted data are of primary interest to consumers concerned about the prices they actually pay. Unadjusted data also are used extensively for escalation purposes. Many collective bargaining contract agreements and pension plans, for example, tie compensation changes to the Consumer Price Index before adjustment for seasonal variation.

Seasonal factors used in computing the seasonally adjusted indexes are derived by the X-12-ARIMA Seasonal Adjustment Method. Seasonally adjusted indexes and seasonal factors are computed annually. Each year, the last 5 years of seasonally adjusted data are revised. Data from January 2007 through December 2011 were replaced in January 2012. Exceptions to the usual revision schedule were: the updated seasonal data at the end of 1977 replaced data from 1967 through 1977; and, in January 2002, dependently seasonally adjusted series were revised for January 1987-December 2001 as a result of a change in the aggregation weights for dependently adjusted series. For further information, please see "[Aggregation of Dependently Adjusted Seasonally Adjusted Series](#)," in the October 2001 issue of the [CPI Detailed Report](#).

Effective with the publication of data from January 2006 through December 2010 in January 2011, the Video and audio series and the Information technology, hardware and services series were changed from independently adjusted to dependently adjusted. This resulted in an increase in the number of seasonal components used in deriving seasonal movement of the All items and 54 other lower level aggregations, from 73 for the publication of January 1998 through December 2005 data to 82 for the publication of seasonally adjusted data for January 2006 and later. Each year the seasonal status of every series is reevaluated based upon certain statistical criteria. If any of the 82 components change their seasonal adjustment status from seasonally adjusted to not seasonally adjusted, not seasonally adjusted data will be used in the aggregation of the dependent series for the last 5 years, but the seasonally adjusted indexes before that period will not be changed. Note: 38 of the 82 components are not seasonally adjusted for 2012.

Seasonally adjusted data, including the all items index levels, are subject to revision for up to five years after their original release. For this reason, BLS advises against the use of these data in escalation agreements.

Effective with the calculation of the seasonal factors for 1990, the Bureau of Labor Statistics has used an enhanced seasonal adjustment procedure called Intervention Analysis Seasonal Adjustment for some CPI series. Intervention Analysis Seasonal Adjustment allows for better estimates of seasonally adjusted data. Extreme values and/or sharp movements which might distort the seasonal pattern are estimated and removed from the data prior to calculation of seasonal factors. Beginning with the calculation of seasonal factors for 1996, X-12-ARIMA software was used for Intervention Analysis Seasonal Adjustment.

For the seasonal factors introduced in January 2012, BLS adjusted 31 series using Intervention Analysis Seasonal Adjustment, including selected food and beverage items, motor fuels, electricity and vehicles. For example, this procedure was used for the Motor fuel series to offset the effects of events such as damage to oil refineries from Hurricane Katrina.

For a complete list of Intervention Analysis Seasonal Adjustment series and explanations, please refer to the article “Intervention Analysis Seasonal Adjustment”, located on our website at <http://www.bls.gov/cpi/cpisapage.htm>.

For additional information on seasonal adjustment in the CPI, please write to the Bureau of Labor Statistics, Division of Consumer Prices and Price Indexes, Washington, DC 20212 or contact David Levin at (202) 691-6968, or by e-mail at [Levin.David@bls.gov](mailto:Levin.David@bls.gov). If you have general questions about the CPI, please call our information staff at (202) 691-7000.



**Table 1. Consumer Price Index for All Urban Consumers (CPI-U): U.S. city average, by expenditure category, May 2012**

[1982-84=100, unless otherwise noted]

Expenditure category	Relative importance Apr. 2012	Unadjusted indexes			Unadjusted percent change		Seasonally adjusted percent change		
		May 2011	Apr. 2012	May 2012	May 2011-May 2012	Apr. 2012-May 2012	Feb. 2012-Mar. 2012	Mar. 2012-Apr. 2012	Apr. 2012-May 2012
All items.....	100.000	225.964	230.085	229.815	1.7	-0.1	0.3	0.0	-0.3
Food.....	14.151	226.976	233.234	233.339	2.8	0.0	0.2	0.2	0.0
Food at home.....	8.537	225.356	231.711	231.518	2.7	-0.1	0.1	0.2	-0.1
Cereals and bakery products.....	1.228	259.140	268.014	268.653	3.7	0.2	-0.2	0.4	-0.1
Meats, poultry, fish, and eggs.....	1.940	223.227	230.967	229.351	2.7	-0.7	0.8	0.1	-0.5
Dairy and related products <sup>1</sup> .....	0.893	211.327	216.918	216.096	2.3	-0.4	-0.1	-1.0	-0.4
Fruits and vegetables.....	1.253	284.174	281.648	283.149	-0.4	0.5	-0.4	1.0	0.4
Nonalcoholic beverages and beverage materials.....	0.947	165.862	169.191	167.866	1.2	-0.8	-0.2	0.2	-0.6
Other food at home.....	2.276	196.161	204.864	205.554	4.8	0.3	0.3	0.1	0.3
Food away from home <sup>1</sup> .....	5.614	230.501	236.695	237.262	2.9	0.2	0.2	0.3	0.2
Energy.....	10.451	260.376	255.736	250.306	-3.9	-2.1	0.9	-1.7	-4.3
Energy commodities.....	6.733	340.183	339.793	327.659	-3.7	-3.6	1.7	-2.6	-6.4
Fuel oil <sup>1</sup> .....	0.238	383.814	390.483	379.681	-1.1	-2.8	2.7	-1.1	-2.8
Motor fuel.....	6.385	337.359	336.673	324.589	-3.8	-3.6	1.7	-2.6	-6.6
Gasoline (all types).....	6.186	336.999	335.742	323.604	-4.0	-3.6	1.7	-2.6	-6.8
Energy services <sup>2</sup> .....	3.718	193.698	185.834	186.762	-3.6	0.5	-0.4	-0.2	-0.7
Electricity <sup>2</sup> .....	2.853	195.838	192.472	196.159	0.2	1.9	-0.8	0.2	0.3
Utility (piped) gas service <sup>2</sup> .....	0.865	184.327	163.692	156.863	-14.9	-4.2	0.9	-1.8	-4.1
All items less food and energy.....	75.398	224.534	229.303	229.602	2.3	0.1	0.2	0.2	0.2
Commodities less food and energy commodities.....	19.757	145.657	148.070	148.020	1.6	0.0	0.2	0.2	0.2
Apparel.....	3.636	122.271	128.485	127.688	4.4	-0.6	0.5	0.4	0.4
New vehicles.....	3.168	142.494	144.522	144.401	1.3	-0.1	0.2	0.4	0.2
Used cars and trucks.....	1.914	148.361	151.087	153.565	3.5	1.6	1.3	1.5	1.0
Medical care commodities <sup>1</sup> .....	1.713	324.399	333.060	333.131	2.7	0.0	0.4	0.0	0.0
Alcoholic beverages.....	0.941	226.989	230.092	230.766	1.7	0.3	-0.2	0.1	0.2
Tobacco and smoking products <sup>1</sup> .....	0.789	825.690	847.032	845.622	2.4	-0.2	-0.3	0.2	-0.2
Services less energy services.....	55.641	272.158	278.431	278.956	2.5	0.2	0.2	0.3	0.2
Shelter.....	31.216	250.745	256.031	256.442	2.3	0.2	0.2	0.2	0.2
Rent of primary residence <sup>2</sup> .....	6.403	252.393	258.922	259.231	2.7	0.1	0.2	0.2	0.2
Owners' equivalent rent of residences <sup>2, 3</sup> .....	23.657	258.587	263.765	264.012	2.1	0.1	0.2	0.2	0.1
Medical care services.....	5.330	422.438	437.151	438.766	3.9	0.4	0.3	0.4	0.5
Physicians' services <sup>2</sup> .....	1.586	339.534	344.151	345.118	1.6	0.3	0.2	0.3	0.2
Hospital services <sup>2, 4</sup> .....	1.514	240.334	251.819	252.476	5.1	0.3	0.2	0.6	0.6
Transportation services.....	5.734	267.832	272.146	272.912	1.9	0.3	0.3	0.5	0.3
Motor vehicle maintenance and repair <sup>1</sup> .....	1.137	252.376	256.544	257.372	2.0	0.3	-0.1	0.0	0.3
Motor vehicle insurance.....	2.388	386.954	397.507	398.478	3.0	0.2	0.5	0.4	0.4
Airline fare.....	0.788	307.310	312.845	317.066	3.2	1.3	0.4	2.1	1.0

1 Not seasonally adjusted.

2 This index series was calculated using a Laspeyres estimator. All other item stratum index series were calculated using a geometric means estimator.

3 Indexes on a December 1982=100 base.

4 Indexes on a December 1996=100 base.

NOTE: Index applies to a month as a whole, not to any specific date.

**Table 2. Consumer Price Index for All Urban Consumers (CPI-U): U.S. city average, by detailed expenditure category, May 2012**

[1982-84=100, unless otherwise noted]

Expenditure category	Relative importance Apr. 2012	Unadjusted percent change		Seasonally adjusted percent change		
		May 2011-May 2012	Apr. 2012-May 2012	Feb. 2012-Mar. 2012	Mar. 2012-Apr. 2012	Apr. 2012-May 2012
All items.....	100.000	1.7	-0.1	0.3	0.0	-0.3
Food.....	14.151	2.8	0.0	0.2	0.2	0.0
Food at home.....	8.537	2.7	-0.1	0.1	0.2	-0.1
Cereals and bakery products.....	1.228	3.7	0.2	-0.2	0.4	-0.1
Cereals and cereal products.....	0.473	4.0	0.6	-0.3	0.7	0.0
Flour and prepared flour mixes.....	0.052	5.9	0.9	1.6	0.5	-0.8
Breakfast cereal <sup>1</sup> .....	0.290	3.0	0.6	0.0	0.4	0.6
Rice, pasta, cornmeal <sup>1</sup> .....	0.131	5.0	0.4	-1.3	0.7	0.4
Rice <sup>1, 2, 3</sup> .....		2.4	-0.8	-1.4	0.9	-0.8
Bakery products.....	0.754	3.6	0.0	-0.2	0.3	-0.3
Bread <sup>2</sup> .....	0.222	3.0	0.0	-0.4	0.3	-0.2
White bread <sup>1, 3</sup> .....		2.7	0.1	-0.6	0.2	0.1
Bread other than white <sup>1, 3</sup> .....		3.0	0.3	-0.2	0.5	0.3
Fresh biscuits, rolls, muffins <sup>1, 2</sup> .....	0.111	3.0	0.6	0.1	-0.8	0.5
Cakes, cupcakes, and cookies.....	0.184	5.7	-1.3	0.3	1.2	-0.9
Cookies <sup>1, 3</sup> .....		7.4	-0.4	-0.6	2.0	-0.2
Fresh cakes and cupcakes <sup>1, 3</sup> .....		4.8	-2.2	0.6	0.5	-2.2
Other bakery products.....	0.237	2.3	0.8	-0.6	0.6	-0.6
Fresh sweetrolls, coffeeecakes, doughnuts <sup>1, 3</sup> .....		3.7	1.3	-0.1	-2.4	1.3
Crackers, bread, and cracker products <sup>3</sup> .....		2.4	0.0	-1.7	2.6	-0.7
Frozen and refrigerated bakery products, pies, tarts, turnovers <sup>3</sup> .....		1.7	-0.2	0.3	0.0	-1.3
Meats, poultry, fish, and eggs.....	1.940	2.7	-0.7	0.8	0.1	-0.5
Meats, poultry, and fish.....	1.832	2.9	-0.4	0.7	0.0	-0.6
Meats.....	1.187	2.8	-0.1	0.5	-0.1	-0.3
Beef and veal <sup>1</sup> .....	0.551	5.4	0.6	0.8	0.3	0.6
Uncooked ground beef <sup>1</sup> .....	0.215	5.9	1.4	0.4	0.1	1.4
Uncooked beef roasts <sup>1, 2</sup> .....	0.080	4.7	0.1	0.0	-0.6	0.1
Uncooked beef steaks <sup>1, 2</sup> .....	0.205	5.6	0.1	1.4	1.3	0.1
Uncooked other beef and veal <sup>1, 2</sup> .....	0.051	3.8	0.6	1.2	-1.5	0.6
Pork.....	0.371	-0.3	-0.8	-0.2	0.0	-2.4
Bacon, breakfast sausage, and related products <sup>2</sup> .....		0.139	-1.1	-0.2	0.2	-1.3
Bacon and related products <sup>3</sup> .....			-3.2	-2.2	0.5	-2.0
Breakfast sausage and related products <sup>1, 2, 3</sup> .....			4.0	2.8	-0.9	-0.5
Ham.....	0.079	2.2	0.3	2.4	1.0	-1.3
Ham, excluding canned <sup>3</sup> .....		2.4	0.3	2.5	1.1	-1.3
Pork chops.....	0.061	1.0	-0.1	-0.4	1.8	-1.9
Other pork including roasts and picnics <sup>2</sup> .....	0.092	-2.4	-3.2	-1.2	-0.7	-4.2
Other meats.....	0.265	2.2	-0.7	0.7	-1.2	0.6
Frankfurters <sup>3</sup> .....		5.6	-1.4	0.7	0.4	1.8
Lunchmeats <sup>1, 2, 3</sup> .....		2.2	-0.3	0.2	-1.1	-0.3
Lamb and organ meats <sup>1, 3</sup> .....		-1.2	-2.1	0.2	-1.9	-2.1
Lamb and mutton <sup>1, 2, 3</sup> .....		-1.4	-6.0	0.5	-1.7	-6.0
Poultry.....	0.339	3.9	-1.4	1.4	-0.1	-1.3
Chicken <sup>2</sup> .....	0.265	2.5	-2.1	1.3	0.2	-1.9
Fresh whole chicken <sup>1, 3</sup> .....		1.4	-4.8	1.5	1.6	-4.8
Fresh and frozen chicken parts <sup>1, 3</sup> .....		3.4	-0.8	1.4	0.3	-0.8
Other poultry including turkey <sup>2</sup> .....	0.075	8.9	1.1	1.5	-1.1	0.8
Fish and seafood <sup>1</sup> .....	0.305	1.9	-0.4	1.0	0.6	-1.2
Fresh fish and seafood <sup>1, 2</sup> .....	0.157	-0.4	-0.2	0.9	0.5	-0.2
Processed fish and seafood <sup>2</sup> .....	0.148	4.5	-0.6	1.7	1.0	-1.4
Shelf stable fish and seafood <sup>1, 3</sup> .....		7.2	-1.3	-0.2	3.4	-1.3

See footnotes at end of table.

**Table 2. Consumer Price Index for All Urban Consumers (CPI-U): U.S. city average, by detailed expenditure category, May 2012 — Continued**  
 [1982-84=100, unless otherwise noted]

Expenditure category	Relative importance Apr. 2012	Unadjusted percent change		Seasonally adjusted percent change		
		May 2011-May 2012	Apr. 2012-May 2012	Feb. 2012-Mar. 2012	Mar. 2012-Apr. 2012	Apr. 2012-May 2012
Frozen fish and seafood <sup>1, 3</sup> .....		3.7	0.1	0.2	2.4	0.1
Eggs.....	0.108	1.4	-5.9	2.3	3.2	1.2
Dairy and related products <sup>1</sup> .....	0.893	2.3	-0.4	-0.1	-1.0	-0.4
Milk <sup>1, 2</sup> .....	0.288	-0.4	0.0	-0.4	-0.8	0.0
Fresh whole milk <sup>1, 3</sup> .....		-1.1	0.1	-0.2	-0.5	0.1
Fresh milk other than whole <sup>1, 2, 3</sup> .....		0.2	0.0	-0.5	-1.0	0.0
Cheese and related products <sup>1</sup> .....	0.283	2.4	-0.7	-0.6	-1.6	-0.7
Ice cream and related products.....	0.137	6.1	-1.1	1.8	-0.2	0.6
Other dairy and related products <sup>2</sup> .....	0.184	3.7	0.0	0.3	-0.8	-0.6
Fruits and vegetables.....	1.253	-0.4	0.5	-0.4	1.0	0.4
Fresh fruits and vegetables.....	0.950	-2.1	0.6	-0.4	1.0	0.7
Fresh fruits.....	0.500	2.6	1.7	0.7	1.9	-0.1
Apples.....	0.084	5.0	1.1	-1.5	1.2	-0.4
Bananas.....	0.081	-1.0	-0.6	0.6	0.1	-0.3
Citrus fruits <sup>2</sup> .....	0.105	3.5	3.0	1.4	2.0	0.6
Oranges, including tangerines <sup>3</sup> .....		4.2	4.9	2.0	1.4	0.8
Other fresh fruits <sup>2</sup> .....	0.230	2.5	2.2	1.5	2.9	-0.4
Fresh vegetables.....	0.450	-6.9	-0.8	-1.6	0.0	1.6
Potatoes.....	0.083	-4.7	-0.5	-0.3	0.9	-2.4
Lettuce.....	0.057	-10.2	1.7	-0.4	-2.6	3.1
Tomatoes <sup>1</sup> .....	0.075	-19.7	-3.6	0.1	-2.9	-3.6
Other fresh vegetables.....	0.235	-2.0	-0.6	-0.2	2.4	1.3
Processed fruits and vegetables <sup>2</sup> .....	0.304	5.4	0.5	-0.2	0.8	-0.4
Canned fruits and vegetables <sup>2</sup> .....	0.152	4.6	-0.4	-0.5	1.5	-1.7
Canned fruits <sup>2, 3</sup> .....		3.2	0.0	-1.0	1.1	-2.1
Canned vegetables <sup>2, 3</sup> .....		5.9	-0.6	0.2	2.0	-1.3
Frozen fruits and vegetables <sup>2</sup> .....	0.095	5.9	1.7	-0.4	0.0	0.8
Frozen vegetables <sup>3</sup> .....		6.1	2.9	-0.8	0.4	1.6
Other processed fruits and vegetables including dried <sup>2</sup> .....	0.057	6.9	0.8	0.8	-0.3	0.5
Dried beans, peas, and lentils <sup>1, 2, 3</sup> .....		14.3	-0.3	-0.6	0.1	-0.3
Nonalcoholic beverages and beverage materials.....	0.947	1.2	-0.8	-0.2	0.2	-0.6
Juices and nonalcoholic drinks <sup>2</sup> .....	0.706	1.3	-0.6	-0.1	0.0	-0.3
Carbonated drinks.....	0.288	1.7	-0.8	-0.8	0.1	-0.3
Frozen noncarbonated juices and drinks <sup>1, 2</sup> .....	0.014	8.5	-0.4	0.4	-0.3	-0.4
Nonfrozen noncarbonated juices and drinks <sup>1, 2</sup> .....	0.404	0.8	-0.4	0.4	-0.2	-0.4
Beverage materials including coffee and tea <sup>2</sup> .....	0.241	1.0	-1.3	-0.4	0.8	-1.0
Coffee.....	0.147	2.7	-0.8	-0.5	-0.1	-1.5
Roasted coffee <sup>3</sup> .....		2.4	-0.9	-0.2	-1.7	-1.6
Instant and freeze dried coffee <sup>1, 3</sup> .....		4.1	0.0	-2.6	3.3	0.0
Other beverage materials including tea <sup>2</sup> .....	0.094	-1.0	-2.1	-1.1	2.4	-1.6
Other food at home.....	2.276	4.8	0.3	0.3	0.1	0.3
Sugar and sweets <sup>1</sup> .....	0.308	4.6	-0.5	0.5	0.3	-0.5
Sugar and artificial sweeteners.....	0.060	3.7	0.6	-1.0	1.2	0.1
Candy and chewing gum <sup>1, 2</sup> .....	0.184	4.7	-1.2	1.6	0.3	-1.2
Other sweets <sup>2</sup> .....	0.063	4.9	0.6	-1.2	0.8	1.1
Fats and oils.....	0.262	7.8	0.7	0.8	-0.2	0.1
Butter and margarine <sup>2</sup> .....	0.074	-0.9	1.7	0.1	-1.6	0.1
Butter <sup>3</sup> .....		-9.9	1.7	-3.5	-2.2	1.7
Margarine <sup>3</sup> .....		9.0	0.9	1.7	0.1	-0.7
Salad dressing <sup>1, 2</sup> .....	0.066	5.0	-0.3	0.5	-0.7	-0.3
Other fats and oils including peanut butter <sup>2</sup> .....	0.122	15.5	0.5	1.1	0.6	0.1
Peanut butter <sup>1, 2, 3</sup> .....		39.0	-0.6	0.8	2.3	-0.6

See footnotes at end of table.

**Table 2. Consumer Price Index for All Urban Consumers (CPI-U): U.S. city average, by detailed expenditure category, May 2012 — Continued**  
 [1982-84=100, unless otherwise noted]

Expenditure category	Relative importance Apr. 2012	Unadjusted percent change		Seasonally adjusted percent change		
		May 2011- May 2012	Apr. 2012- May 2012	Feb. 2012- Mar. 2012	Mar. 2012- Apr. 2012	Apr. 2012- May 2012
Other foods.....	1.706	4.3	0.4	0.1	0.1	0.5
Soups.....	0.100	4.5	0.7	1.5	0.2	-0.9
Frozen and freeze dried prepared foods <sup>1</sup> .....	0.302	2.1	-0.1	1.0	-0.2	-0.1
Snacks <sup>1</sup> .....	0.321	7.2	1.4	0.3	-0.6	1.4
Spices, seasonings, condiments, sauces.....	0.288	2.0	-1.1	0.0	1.0	-2.2
Salt and other seasonings and spices <sup>2, 3</sup> .....		9.1	-0.2	-1.0	0.6	0.7
Olives, pickles, relishes <sup>1, 2, 3</sup> .....		-1.5	-2.7	0.5	0.1	-2.7
Sauces and gravies <sup>2, 3</sup> .....		-0.4	-1.5	0.5	-0.4	-2.0
Other condiments <sup>1, 3</sup> .....		3.6	-0.5	-0.9	-0.4	-0.5
Baby food <sup>1, 2</sup> .....	0.071	5.5	0.0	0.0	-0.2	0.0
Other miscellaneous foods <sup>1, 2</sup> .....	0.624	4.8	0.9	-0.3	1.0	0.9
Prepared salads <sup>1, 3, 4</sup> .....		4.2	2.0	0.3	-0.5	2.0
Food away from home <sup>1</sup> .....	5.614	2.9	0.2	0.2	0.3	0.2
Full service meals and snacks <sup>1, 2</sup> .....	2.664	2.6	0.2	0.2	0.2	0.2
Limited service meals and snacks <sup>1, 2</sup> .....	2.257	3.3	0.3	0.3	0.4	0.3
Food at employee sites and schools <sup>2</sup> .....	0.256	3.9	0.0	0.3	0.3	0.3
Food at elementary and secondary schools <sup>1, 3, 5</sup> .....		3.4	0.0	0.0	0.0	0.0
Food from vending machines and mobile vendors <sup>1, 2</sup> .....	0.081	4.0	0.3	-0.3	0.1	0.3
Other food away from home <sup>1, 2</sup> .....	0.357	2.0	0.1	-0.1	0.1	0.1
Energy.....	10.451	-3.9	-2.1	0.9	-1.7	-4.3
Energy commodities.....	6.733	-3.7	-3.6	1.7	-2.6	-6.4
Fuel oil and other fuels <sup>1</sup> .....	0.348	-1.8	-3.2	1.8	-1.3	-3.2
Fuel oil <sup>1</sup> .....	0.238	-1.1	-2.8	2.7	-1.1	-2.8
Propane, kerosene, and firewood <sup>1, 6</sup> .....	0.110	-3.0	-4.2	-0.1	0.8	-3.0
Motor fuel.....	6.385	-3.8	-3.6	1.7	-2.6	-6.6
Gasoline (all types).....	6.186	-4.0	-3.6	1.7	-2.6	-6.8
Gasoline, unleaded regular <sup>3</sup> .....		-4.1	-3.7	1.6	-2.6	-6.9
Gasoline, unleaded midgrade <sup>3, 7</sup> .....		-3.8	-3.6	2.0	-2.6	-6.6
Gasoline, unleaded premium <sup>3</sup> .....		-3.2	-3.0	1.7	-2.6	-5.8
Other motor fuels <sup>2</sup> .....	0.199	-1.8	-2.8	3.7	-5.7	-5.4
Energy services <sup>8</sup> .....	3.718	-3.6	0.5	-0.4	-0.2	-0.7
Electricity <sup>8</sup> .....	2.853	0.2	1.9	-0.8	0.2	0.3
Utility (piped) gas service <sup>8</sup> .....	0.865	-14.9	-4.2	0.9	-1.8	-4.1
All items less food and energy.....	75.398	2.3	0.1	0.2	0.2	0.2
Commodities less food and energy commodities.....	19.757	1.6	0.0	0.2	0.2	0.2
Household furnishings and supplies <sup>9</sup> .....	3.337	0.3	-0.2	-0.1	-0.1	-0.2
Window and floor coverings and other linens <sup>1, 2</sup> .....	0.275	-4.0	-1.1	0.3	-0.6	-1.1
Floor coverings <sup>1, 2</sup> .....	0.039	-0.2	0.2	-0.4	0.3	0.2
Window coverings <sup>1, 2</sup> .....	0.076	0.1	0.0	-0.9	0.6	0.0
Other linens <sup>1, 2</sup> .....	0.160	-6.9	-2.0	1.0	-1.4	-2.0
Furniture and bedding <sup>1</sup> .....	0.716	1.4	0.2	0.8	0.0	0.2
Bedroom furniture <sup>1</sup> .....	0.233	0.7	-0.2	0.9	-0.5	-0.2
Living room, kitchen, and dining room furniture <sup>1, 2</sup> .....	0.341	3.6	0.8	0.6	0.5	0.8
Other furniture <sup>2</sup> .....	0.134	-2.7	-0.8	-1.0	-0.3	-1.3
Infants' furniture <sup>1, 3, 5</sup> .....						
Appliances <sup>2</sup> .....	0.289	3.0	-0.5	0.2	-0.6	-0.6
Major appliances <sup>2</sup> .....	0.167	6.9	-0.5	0.7	-0.4	-0.7
Laundry equipment <sup>3</sup> .....		9.0	0.0	1.1	-0.3	-0.1
Other appliances <sup>1, 2</sup> .....	0.119	-2.2	-0.4	-1.1	-0.2	-0.4
Other household equipment and furnishings <sup>1, 2</sup> .....	0.491	-5.0	0.0	-1.4	-0.1	0.0
Clocks, lamps, and decorator items <sup>1</sup> .....	0.258	-6.4	0.3	-1.9	-0.2	0.3
Indoor plants and flowers <sup>10</sup> .....	0.101	-1.9	0.3	-0.9	-0.1	-0.1
Dishes and flatware <sup>1, 2</sup> .....	0.047	-11.2	-1.8	-2.2	-0.1	-1.8

See footnotes at end of table.

**Table 2. Consumer Price Index for All Urban Consumers (CPI-U): U.S. city average, by detailed expenditure category, May 2012 — Continued**  
 [1982-84=100, unless otherwise noted]

Expenditure category	Relative importance Apr. 2012	Unadjusted percent change		Seasonally adjusted percent change		
		May 2011- May 2012	Apr. 2012- May 2012	Feb. 2012- Mar. 2012	Mar. 2012- Apr. 2012	Apr. 2012- May 2012
Nonelectric cookware and tableware <sup>2</sup> .....	0.084	0.0	-0.3	-0.4	1.5	-0.4
Tools, hardware, outdoor equipment and supplies <sup>2</sup> . . .	0.681	0.4	0.1	-0.7	0.3	-0.3
Tools, hardware and supplies <sup>1</sup> · <sup>2</sup> .....	0.172	2.0	0.1	-0.2	0.1	0.1
Outdoor equipment and supplies <sup>2</sup> .....	0.363	-0.3	0.0	-0.9	0.9	-0.6
Housekeeping supplies <sup>1</sup> .....	0.886	3.1	-0.4	-0.2	-0.3	-0.4
Household cleaning products <sup>1</sup> · <sup>2</sup> .....	0.358	2.2	-0.4	0.0	-1.0	-0.4
Household paper products <sup>1</sup> · <sup>2</sup> .....	0.240	4.3	-0.1	0.2	-0.1	-0.1
Miscellaneous household products <sup>1</sup> · <sup>2</sup> .....	0.287	3.3	-0.6	-0.7	0.4	-0.6
Apparel.....	3.636	4.4	-0.6	0.5	0.4	0.4
Men's and boys' apparel.....	0.876	5.5	0.1	0.8	0.5	0.1
Men's apparel.....	0.690	4.9	0.7	-0.2	0.4	0.5
Men's suits, sport coats, and outerwear.....	0.125	2.4	1.2	-0.4	-1.3	0.5
Men's furnishings.....	0.180	7.7	3.0	-0.5	0.3	3.5
Men's shirts and sweaters <sup>2</sup> .....	0.217	3.2	-2.2	-0.8	2.4	-2.7
Men's pants and shorts.....	0.161	6.9	1.6	-0.1	-0.1	1.7
Boys' apparel.....	0.185	7.6	-2.2	6.2	2.6	-2.6
Women's and girls' apparel.....	1.558	5.6	-1.3	0.3	1.0	0.5
Women's apparel.....	1.305	5.2	-1.1	0.3	1.2	0.7
Women's outerwear.....	0.089	2.3	-9.9	-3.4	4.2	-4.5
Women's dresses.....	0.184	2.9	-3.7	8.8	-4.3	-2.0
Women's suits and separates <sup>2</sup> .....	0.622	5.9	0.4	-1.5	3.0	2.3
Women's underwear, nightwear, sportswear and accessories <sup>2</sup> .....	0.395	4.0	-0.3	-1.1	1.2	-0.7
Girls' apparel.....	0.252	7.9	-2.5	0.5	-0.1	-0.3
Footwear.....	0.683	2.2	0.4	0.6	0.6	0.8
Men's footwear <sup>1</sup> .....	0.209	3.9	0.6	0.1	1.5	0.6
Boys' and girls' footwear.....	0.150	1.1	-0.5	1.0	0.7	0.5
Women's footwear.....	0.324	1.4	0.7	1.0	0.4	0.8
Infants' and toddlers' apparel.....	0.199	7.0	-0.2	0.2	-1.1	1.6
Jewelry and watches <sup>6</sup> .....	0.321	-0.2	-1.6	0.5	-2.8	-1.3
Watches <sup>1</sup> · <sup>6</sup> .....	0.089	0.3	-1.4	1.6	-0.4	-1.4
Jewelry <sup>6</sup> .....	0.232	-0.7	-1.6	0.2	-3.5	-1.5
Transportation commodities less motor fuel <sup>9</sup> .....	5.583	2.2	0.5	0.6	0.8	0.5
New vehicles.....	3.168	1.3	-0.1	0.2	0.4	0.2
New cars and trucks <sup>2</sup> · <sup>3</sup> .....		1.3	-0.1	0.2	0.4	0.2
New cars <sup>3</sup> .....		1.2	0.1	0.2	0.5	0.1
New trucks <sup>3</sup> · <sup>11</sup> .....		1.4	-0.2	0.2	0.4	0.2
Used cars and trucks.....	1.914	3.5	1.6	1.3	1.5	1.0
Motor vehicle parts and equipment <sup>1</sup> .....	0.432	3.6	0.1	0.0	0.0	0.1
Tires <sup>1</sup> .....	0.294	4.0	0.0	-0.3	0.1	0.0
Vehicle accessories other than tires <sup>1</sup> · <sup>2</sup> .....	0.138	3.0	0.5	0.7	-0.2	0.5
Vehicle parts and equipment other than tires <sup>1</sup> · <sup>3</sup> .....		1.5	0.7	0.4	-0.3	0.7
Motor oil, coolant, and fluids <sup>1</sup> · <sup>3</sup> .....		10.2	0.1	1.8	0.4	0.1
Medical care commodities <sup>1</sup> .....	1.713	2.7	0.0	0.4	0.0	0.0
Medicinal drugs <sup>1</sup> · <sup>9</sup> .....	1.635	2.7	0.0	0.4	0.0	0.0
Prescription drugs.....	1.325	3.3	-0.1	0.3	0.0	0.0
Nonprescription drugs <sup>1</sup> · <sup>9</sup> .....	0.310	0.3	0.5	1.0	-0.3	0.5
Medical equipment and supplies <sup>1</sup> · <sup>9</sup> .....	0.078	2.2	1.0	-0.3	0.1	1.0
Recreation commodities <sup>9</sup> .....	2.305	-1.7	-0.1	-0.2	-0.4	-0.1
Video and audio products <sup>9</sup> .....	0.420	-9.5	-0.9	-1.2	-1.8	-0.4
Televisions.....	0.165	-17.7	-1.2	-2.6	-3.7	0.2
Other video equipment <sup>1</sup> · <sup>2</sup> .....	0.027	-12.1	-1.3	-2.3	-1.2	-1.3
Audio equipment <sup>1</sup> .....	0.072	-8.7	-2.0	-0.5	-1.5	-2.0

See footnotes at end of table.

**Table 2. Consumer Price Index for All Urban Consumers (CPI-U): U.S. city average, by detailed expenditure category, May 2012 — Continued**  
 [1982-84=100, unless otherwise noted]

Expenditure category	Relative importance Apr. 2012	Unadjusted percent change		Seasonally adjusted percent change		
		May 2011- May 2012	Apr. 2012- May 2012	Feb. 2012- Mar. 2012	Mar. 2012- Apr. 2012	Apr. 2012- May 2012
Audio discs, tapes and other media <sup>1, 2</sup> .....	0.044	-4.3	-0.2	-0.2	-0.7	-0.2
Pets and pet products <sup>1</sup> .....	0.686	2.5	-0.1	0.5	-0.1	-0.1
Pet food <sup>1, 2, 3</sup> .....		3.5	-0.1	0.6	0.0	-0.1
Purchase of pets, pet supplies, accessories <sup>1, 2, 3</sup> ...		0.3	-0.1	0.6	-0.5	-0.1
Sporting goods <sup>1</sup> .....	0.460	-0.3	-0.3	-0.3	0.5	-0.3
Sports vehicles including bicycles <sup>1</sup> .....	0.239	0.2	-0.2	-0.4	-0.6	-0.2
Sports equipment <sup>1</sup> .....	0.211	-1.1	-0.3	-0.1	1.8	-0.3
Photographic equipment and supplies .....	0.054	-5.3	-1.0	-1.0	0.9	-1.7
Film and photographic supplies <sup>1, 2, 3</sup> .....		8.4	-0.4	0.4	1.8	-0.4
Photographic equipment <sup>2, 3</sup> .....		-7.8	-1.3	-0.7	0.9	-1.9
Recreational reading materials <sup>1</sup> .....	0.222	2.2	0.4	0.7	0.2	0.4
Newspapers and magazines <sup>1, 2</sup> .....	0.120	5.1	0.8	1.1	0.3	0.8
Recreational books <sup>1, 2</sup> .....	0.098	-1.3	-0.1	0.3	0.0	-0.1
Other recreational goods <sup>2</sup> .....	0.464	-3.8	0.4	-0.7	-1.0	0.3
Toys <sup>1</sup> .....	0.345	-5.4	0.4	-0.9	-1.5	0.4
Toys, games, hobbies and playground equipment <sup>1, 2, 3</sup> .....		-2.1	0.7	-1.0	-1.1	0.7
Sewing machines, fabric and supplies <sup>2</sup> .....	0.061	2.8	0.5	0.6	1.2	0.1
Music instruments and accessories <sup>2</sup> .....	0.039	-0.3	0.1	-0.2	0.2	0.1
Education and communication commodities <sup>9</sup> .....	0.595	-3.2	0.2	-0.5	-0.7	0.6
Educational books and supplies .....	0.200	5.8	0.6	0.6	0.5	0.8
College textbooks <sup>1, 3, 12</sup> .....		6.4	0.7	0.4	0.3	0.7
Information technology commodities <sup>9</sup> .....	0.395	-8.5	0.0	-1.0	-1.3	0.5
Personal computers and peripheral equipment <sup>4</sup> .....	0.260	-10.6	0.0	-1.3	-1.6	0.9
Computer software and accessories <sup>1, 2</sup> .....	0.048	-2.4	0.1	-0.8	-0.5	0.1
Telephone hardware, calculators, and other consumer information items <sup>1, 2</sup> .....	0.087	-5.1	-0.2	-0.2	-1.1	-0.2
Alcoholic beverages .....	0.941	1.7	0.3	-0.2	0.1	0.2
Alcoholic beverages at home .....	0.567	0.9	0.2	0.0	-0.2	0.4
Beer, ale, and other malt beverages at home .....	0.270	2.1	0.0	0.1	-0.5	0.5
Distilled spirits at home <sup>1</sup> .....	0.071	-0.5	-0.3	-0.3	-0.1	-0.4
Whiskey at home <sup>3</sup> .....		1.3	0.4	-1.2	0.5	0.4
Distilled spirits, excluding whiskey, at home <sup>1, 3</sup> ...		-0.4	-0.2	0.0	0.3	-0.2
Wine at home .....	0.226	-0.4	0.5	-0.1	0.2	0.4
Alcoholic beverages away from home <sup>1</sup> .....	0.374	2.8	0.5	-0.4	0.4	0.5
Beer, ale, and other malt beverages away from home <sup>1, 2, 3</sup> .....		1.2	0.1	0.0	0.3	0.1
Wine away from home <sup>1, 2, 3</sup> .....		2.9	-0.1	0.1	0.4	-0.1
Distilled spirits away from home <sup>1, 2, 3</sup> .....		3.3	0.9	-0.8	0.9	0.9
Other goods <sup>9</sup> .....	1.647	1.5	-0.5	0.3	0.1	-0.5
Tobacco and smoking products <sup>1</sup> .....	0.789	2.4	-0.2	-0.3	0.2	-0.2
Cigarettes <sup>1, 2</sup> .....	0.729	2.3	-0.2	-0.3	0.1	-0.2
Tobacco products other than cigarettes <sup>1, 2</sup> .....	0.053	3.4	0.3	0.2	0.3	0.3
Personal care products <sup>1</sup> .....	0.652	1.3	-1.0	1.2	0.3	-1.0
Hair, dental, shaving, and miscellaneous personal care products <sup>1, 2</sup> .....	0.342	0.6	-1.1	1.5	0.1	-1.1
Cosmetics, perfume, bath, nail preparations and implements <sup>1</sup> .....	0.304	1.9	-0.9	1.0	0.6	-0.9
Miscellaneous personal goods <sup>2</sup> .....	0.206	-1.3	-0.1	-0.5	-0.6	-0.2
Stationery, stationery supplies, gift wrap <sup>3</sup> .....		-0.1	0.2	-0.4	0.0	0.1
Infants' equipment <sup>1, 3, 5</sup> .....		-3.9	-0.4	0.2	-0.1	-0.4
Services less energy services .....	55.641	2.5	0.2	0.2	0.3	0.2
Shelter .....	31.216	2.3	0.2	0.2	0.2	0.2
Rent of shelter <sup>13</sup> .....	30.871	2.3	0.2	0.2	0.2	0.2
Rent of primary residence <sup>8</sup> .....	6.403	2.7	0.1	0.2	0.2	0.2

See footnotes at end of table.

**Table 2. Consumer Price Index for All Urban Consumers (CPI-U): U.S. city average, by detailed expenditure category, May 2012 — Continued**  
 [1982-84=100, unless otherwise noted]

Expenditure category	Relative importance Apr. 2012	Unadjusted percent change		Seasonally adjusted percent change		
		May 2011-May 2012	Apr. 2012-May 2012	Feb. 2012-Mar. 2012	Mar. 2012-Apr. 2012	Apr. 2012-May 2012
Lodging away from home <sup>2</sup> .....	0.810	4.1	2.4	0.3	-0.2	1.5
Housing at school, excluding board <sup>8, 13</sup> .....	0.152	3.9	0.1	0.3	0.4	0.4
Other lodging away from home including hotels and motels.....	0.658	4.0	3.0	0.2	-0.4	1.8
Owners' equivalent rent of residences <sup>8, 13</sup> .....	23.657	2.1	0.1	0.2	0.2	0.1
Owners' equivalent rent of primary residence <sup>8, 13</sup> .....	22.261	2.1	0.1	0.2	0.2	0.1
Tenants' and household insurance <sup>1, 2</sup> .....	0.346	3.4	0.2	0.6	0.7	0.2
Water and sewer and trash collection services <sup>2</sup> .....	1.163	5.2	0.2	0.6	0.8	0.3
Water and sewerage maintenance <sup>8</sup> .....	0.877	6.4	0.2	0.7	1.1	0.3
Garbage and trash collection <sup>1, 11</sup> .....	0.286	1.4	0.0	0.3	-0.2	0.0
Household operations <sup>1, 2</sup> .....	0.724	2.1	-0.1	0.1	0.4	-0.1
Domestic services <sup>1, 2</sup> .....	0.248	1.2	-0.3	0.0	0.6	-0.3
Gardening and lawncare services <sup>1, 2</sup> .....	0.236	1.7	-0.2	0.0	0.5	-0.2
Moving, storage, freight expense <sup>1, 2</sup> .....	0.090	3.4	0.4	0.5	-0.7	0.4
Repair of household items <sup>1, 2</sup> .....	0.076		0.5	0.3	1.2	0.5
Medical care services.....	5.330	3.9	0.4	0.3	0.4	0.5
Professional services.....	2.964	1.8	0.4	0.2	0.1	0.4
Physicians' services <sup>8</sup> .....	1.586	1.6	0.3	0.2	0.3	0.2
Dental services <sup>8</sup> .....	0.754	1.9	0.2	0.2	0.1	0.1
Eyeglasses and eye care <sup>6</sup> .....	0.250	3.3	1.5	0.2	0.4	1.6
Services by other medical professionals <sup>1, 8, 6</sup> .....	0.374	1.1	0.2	0.1	0.0	0.2
Hospital and related services.....	1.735	4.7	0.3	0.2	0.5	0.6
Hospital services <sup>8, 14</sup> .....	1.514	5.1	0.3	0.2	0.6	0.6
Inpatient hospital services <sup>8, 14, 3</sup> .....		5.1	0.2	0.1	0.5	0.7
Outpatient hospital services <sup>8, 3, 6</sup> .....		4.8	0.2	0.2	0.6	0.5
Nursing homes and adult day services <sup>8, 14</sup> .....	0.136	3.8	0.4	0.3	0.1	0.3
Care of invalids and elderly at home <sup>1, 5</sup> .....	0.085	0.9	0.1	0.0	0.2	0.1
Health insurance <sup>1, 5</sup> .....	0.631	13.0	0.8	1.3	1.0	0.8
Transportation services.....	5.734	1.9	0.3	0.3	0.5	0.3
Leased cars and trucks <sup>12</sup> .....	0.388	-6.0	-0.7	0.0	-0.2	-1.2
Car and truck rental <sup>2</sup> .....	0.069	1.4	-3.6	2.0	4.4	-2.4
Motor vehicle maintenance and repair <sup>1</sup> .....	1.137	2.0	0.3	-0.1	0.0	0.3
Motor vehicle body work <sup>1</sup> .....	0.057	1.8	0.2	0.3	0.1	0.2
Motor vehicle maintenance and servicing <sup>1</sup> .....	0.454	2.6	0.2	0.2	0.1	0.2
Motor vehicle repair <sup>1, 2</sup> .....	0.591	1.5	0.4	-0.4	-0.1	0.4
Motor vehicle insurance.....	2.388	3.0	0.2	0.5	0.4	0.4
Motor vehicle fees <sup>1, 2</sup> .....	0.557	2.9	0.1	0.0	-0.1	0.1
State motor vehicle registration and license fees <sup>1, 8, 2</sup> .....	0.324	0.5	0.0	0.0	-0.2	0.0
Parking and other fees <sup>1, 2</sup> .....	0.210	6.8	0.2	0.0	0.2	0.2
Parking fees and tolls <sup>1, 2, 3</sup> .....		8.9	0.2	0.1	0.0	0.2
Automobile service clubs <sup>1, 2, 3</sup> .....		2.8	0.6	0.1	0.4	0.6
Public transportation.....	1.195	2.4	1.0	0.5	1.6	0.8
Airline fare.....	0.788	3.2	1.3	0.4	2.1	1.0
Other intercity transportation.....	0.148	-0.8	0.4	0.1	0.8	0.3
Intercity bus fare <sup>1, 3, 4</sup> .....			-0.8	1.0	1.7	-0.8
Intercity train fare <sup>1, 3, 4</sup> .....		-0.7	4.8	4.5	2.8	4.8
Ship fare <sup>1, 2, 3</sup> .....		-1.7	-0.3	-0.3	0.0	-0.3
Intracity transportation <sup>1</sup> .....	0.257	2.2	0.1	0.7	0.1	0.1
Intracity mass transit <sup>1, 3, 9</sup> .....		1.5	0.1	0.0	0.1	0.1
Recreation services <sup>9</sup> .....	3.683	2.6	0.1	0.4	0.1	0.2
Video and audio services <sup>9</sup> .....	1.499	4.5	0.3	0.5	0.2	0.4
Cable and satellite television and radio service <sup>11</sup> ..	1.387	4.5	0.3	0.5	0.2	0.5

See footnotes at end of table.

**Table 2. Consumer Price Index for All Urban Consumers (CPI-U): U.S. city average, by detailed expenditure category, May 2012 — Continued**  
 [1982-84=100, unless otherwise noted]

Expenditure category	Relative importance Apr. 2012	Unadjusted percent change		Seasonally adjusted percent change		
		May 2011- May 2012	Apr. 2012- May 2012	Feb. 2012- Mar. 2012	Mar. 2012- Apr. 2012	Apr. 2012- May 2012
Video discs and other media, including rental of video and audio <sup>1, 2</sup> .....	0.112	4.1	-0.2	0.3	1.0	-0.2
Video discs and other media <sup>1, 2, 3</sup> .....		-4.4	-0.1	0.4	1.8	-0.1
Rental of video or audio discs and other media <sup>1, 2, 3</sup> .....		12.0	-0.1	0.6	0.1	-0.1
Pet services including veterinary <sup>2</sup> .....	0.405	3.0	0.0	0.3	0.2	0.1
Pet services <sup>1, 2, 3</sup> .....		2.4	0.0	0.4	-0.1	0.0
Veterinarian services <sup>2, 3</sup> .....		2.8	0.0	0.1	0.4	0.1
Photographers and film processing <sup>1, 2</sup> .....	0.058	1.5	-0.1	0.3	0.0	-0.1
Photographer fees <sup>1, 2, 3</sup> .....		1.1	0.0	0.1	0.2	0.0
Film processing <sup>1, 2, 3</sup> .....		1.3	-0.2	0.3	0.0	-0.2
Other recreation services <sup>2</sup> .....	1.719	0.9	0.0	0.4	-0.1	0.0
Club dues and fees for participant sports and group exercises <sup>2</sup> .....	0.565	1.7	-0.4	0.9	-0.3	-0.4
Admissions <sup>1</sup> .....	0.623	0.6	0.6	0.1	0.1	0.6
Admission to movies, theaters, and concerts <sup>1, 2, 3</sup> .....		0.3	0.5	-0.1	0.1	0.5
Admission to sporting events <sup>1, 2, 3</sup> .....		2.4	0.8	0.7	0.3	0.8
Fees for lessons or instructions <sup>1, 6</sup> .....	0.228	0.5	-0.1	-0.1	0.2	-0.1
Education and communication services <sup>9</sup> .....	6.099	2.7	0.1	0.2	0.2	0.2
Tuition, other school fees, and childcare .....	2.959	4.2	0.1	0.3	0.3	0.4
College tuition and fees .....	1.659	5.3	0.2	0.5	0.3	0.4
Elementary and high school tuition and fees .....	0.375	3.7	0.1	0.2	0.3	0.4
Child care and nursery school <sup>10</sup> .....	0.765	2.4	0.1	0.2	0.2	0.4
Technical and business school tuition and fees <sup>2</sup> .....	0.058	5.2	0.2	0.6	-0.1	-0.1
Postage and delivery services <sup>2</sup> .....	0.148	3.8	0.0	0.2	0.0	-0.3
Postage <sup>1</sup> .....	0.138	3.8	0.0	0.2	-0.1	-0.3
Delivery services <sup>1, 2</sup> .....	0.010	4.5	0.1	-0.1	1.2	0.1
Telephone services <sup>1, 2</sup> .....	2.394	0.8	0.1	0.1	0.1	0.1
Wireless telephone services <sup>1, 2</sup> .....	1.456	-0.6	0.1	0.0	0.0	0.1
Land-line telephone services <sup>1, 9</sup> .....	0.938	2.5	0.1	0.1	0.2	0.1
Internet services and electronic information providers <sup>1, 2</sup> .....	0.583	2.1	0.3	0.3	0.8	0.3
Other personal services <sup>9</sup> .....	1.692	2.3	0.2	0.2	0.3	0.2
Personal care services <sup>1</sup> .....	0.625	1.5	0.1	0.2	0.2	0.1
Haircuts and other personal care services <sup>1, 2</sup> .....	0.625	1.5	0.1	0.2	0.2	0.1
Miscellaneous personal services .....	1.067	2.7	0.3	0.2	0.2	0.3
Legal services <sup>6</sup> .....	0.292	2.2	0.4	0.3	0.1	0.4
Funeral expenses <sup>6</sup> .....	0.157	1.7	0.1	-0.5	0.1	0.0
Laundry and dry cleaning services <sup>2</sup> .....	0.237	1.6	0.3	0.1	-0.1	0.3
Apparel services other than laundry and dry cleaning <sup>1, 2</sup> .....	0.029	3.4	0.1	0.3	-0.2	0.1
Financial services <sup>1, 6</sup> .....	0.211	5.7	0.6	1.0	1.4	0.6

See footnotes at end of table.



**Table 2. Consumer Price Index for All Urban Consumers (CPI-U): U.S. city average, by detailed expenditure category, May 2012 — Continued**

[1982-84=100, unless otherwise noted]

Expenditure category	Relative importance Apr. 2012	Unadjusted percent change		Seasonally adjusted percent change		
		May 2011- May 2012	Apr. 2012- May 2012	Feb. 2012- Mar. 2012	Mar. 2012- Apr. 2012	Apr. 2012- May 2012
Checking account and other bank services <sup>1, 2, 3</sup> .....		5.7	0.7	0.1	-1.1	0.7
Tax return preparation and other accounting fees <sup>2, 3</sup> .....		6.4	0.9	1.4	1.9	0.9

1 Not seasonally adjusted.

2 Indexes on a December 1997=100 base.

3 Special index based on a substantially smaller sample.

4 Indexes on a December 2007=100 base.

5 Indexes on a December 2005=100 base.

6 Indexes on a December 1986=100 base.

7 Indexes on a December 1993=100 base.

8 This index series was calculated using a Laspeyres estimator. All other item stratum index series were calculated using a geometric means estimator.

9 Indexes on a December 2009=100 base.

10 Indexes on a December 1990=100 base.

11 Indexes on a December 1983=100 base.

12 Indexes on a December 2001=100 base.

13 Indexes on a December 1982=100 base.

14 Indexes on a December 1996=100 base.

NOTE: Index applies to a month as a whole, not to any specific date.

**Table 3. Consumer Price Index for All Urban Consumers (CPI-U): U.S. city average, special aggregate indexes, May 2012**

[1982-84=100, unless otherwise noted]

Special aggregate indexes	Relative importance Apr. 2012	Unadjusted indexes			Unadjusted percent change		Seasonally adjusted percent change		
		May 2011	Apr. 2012	May 2012	May 2011-May 2012	Apr. 2012-May 2012	Feb. 2012-Mar. 2012	Mar. 2012-Apr. 2012	Apr. 2012-May 2012
All items less food.....	85.849	225.826	229.621	229.290	1.5	-0.1	0.3	0.0	-0.3
All items less shelter.....	68.784	218.847	222.552	222.010	1.4	-0.2	0.3	0.0	-0.5
All items less food and shelter.....	54.633	216.388	219.503	218.805	1.1	-0.3	0.4	-0.1	-0.6
All items less food, shelter, and energy.....	44.182	210.278	214.770	215.004	2.2	0.1	0.3	0.3	0.2
All items less food, shelter, energy, and used cars and trucks.....	42.268	213.968	218.575	218.662	2.2	0.0	0.2	0.2	0.2
All items less medical care.....	92.958	217.414	221.159	220.833	1.6	-0.1	0.3	0.0	-0.3
All items less energy.....	89.549	224.275	229.252	229.520	2.3	0.1	0.2	0.2	0.2
Commodities.....	40.641	186.804	190.089	188.963	1.2	-0.6	0.4	-0.2	-0.9
Commodities less food, energy, and used cars and trucks.....	17.843	146.089	148.483	148.166	1.4	-0.2	0.1	0.1	0.1
Commodities less food.....	26.490	166.657	168.899	167.323	0.4	-0.9	0.6	-0.5	-1.5
Commodities less food and beverages.....	25.549	164.286	166.479	164.851	0.3	-1.0	0.6	-0.5	-1.5
Services.....	59.359	264.883	269.901	270.462	2.1	0.2	0.2	0.2	0.2
Services less rent of shelter <sup>1</sup> .....	28.488	289.676	294.527	295.291	1.9	0.3	0.2	0.3	0.2
Services less medical care services.....	54.029	252.713	257.121	257.615	1.9	0.2	0.1	0.2	0.2
Durables.....	8.877	112.941	113.306	113.622	0.6	0.3	0.1	0.3	0.1
Nondurables.....	31.764	223.413	228.190	226.283	1.3	-0.8	0.6	-0.3	-1.2
Nondurables less food.....	17.613	217.771	221.619	218.198	0.2	-1.5	0.8	-0.8	-2.2
Nondurables less food and beverages.....	16.672	217.037	220.859	217.222	0.1	-1.6	0.9	-0.9	-2.3
Nondurables less food, beverages, and apparel.....	13.036	281.064	283.379	277.900	-1.1	-1.9	1.1	-1.4	-3.1
Nondurables less food and apparel.....	13.977	274.948	277.443	272.494	-0.9	-1.8	1.0	-1.2	-2.8
Housing.....	40.506	218.484	221.682	221.971	1.6	0.1	0.1	0.1	0.0
Education and communication <sup>2</sup> .....	6.694	130.600	133.284	133.470	2.2	0.1	0.2	0.2	0.3
Education <sup>2</sup> .....	3.160	204.668	213.130	213.499	4.3	0.2	0.3	0.3	0.4
Communication <sup>2</sup> .....	3.535	83.466	83.515	83.606	0.2	0.1	0.0	0.0	0.2
Information and information processing <sup>2</sup> .....	3.387	80.081	79.995	80.086	0.0	0.1	0.0	0.0	0.2
Information technology, hardware and services <sup>3</sup> .....	0.992	9.096	8.865	8.879	-2.4	0.2	-0.2	-0.1	0.4
Recreation <sup>2</sup> .....	5.989	113.659	114.656	114.689	0.9	0.0	0.2	-0.1	0.1
Video and audio <sup>2</sup> .....	1.919	98.707	99.893	99.934	1.2	0.0	0.1	-0.2	0.3
Pets, pet products and services <sup>2</sup> .....	1.091	157.884	162.159	162.107	2.7	0.0	0.4	0.0	0.0
Photography <sup>2</sup> .....	0.113	80.315	79.769	79.324	-1.2	-0.6	-0.3	0.5	-0.9
Food and beverages.....	15.092	227.082	233.116	233.257	2.7	0.1	0.1	0.2	0.0
Domestically produced farm food <sup>4</sup> .....	7.203	231.550	238.478	238.542	3.0	0.0	0.1	0.1	0.0
Other services.....	11.475	313.205	320.824	321.309	2.6	0.2	0.3	0.2	0.2
Apparel less footwear.....	2.953	116.180	123.018	121.957	5.0	-0.9	0.5	0.3	0.3
Fuels and utilities.....	5.229	219.956	216.006	216.388	-1.6	0.2	-0.1	-0.1	-0.7
Household energy.....	4.066	193.498	186.517	186.852	-3.4	0.2	-0.2	-0.3	-1.0
Medical care.....	7.042	399.375	412.480	413.655	3.6	0.3	0.3	0.3	0.4
Transportation.....	17.702	220.270	223.083	220.768	0.2	-1.0	0.9	-0.5	-2.1
Private transportation.....	16.507	215.829	218.563	215.978	0.1	-1.2	0.9	-0.7	-2.3
New and used motor vehicles <sup>2</sup> .....	5.608	99.915	100.977	101.399	1.5	0.4	0.6	0.8	0.3
Utilities and public transportation.....	9.857	206.331	206.050	206.866	0.3	0.4	0.0	0.4	0.1
Household furnishings and operations.....	4.061	125.141	126.114	125.905	0.6	-0.2	-0.2	0.0	-0.3
Other goods and services.....	3.340	385.476	393.320	392.859	1.9	-0.1	0.2	0.1	0.0
Personal care.....	2.551	208.080	211.865	211.649	1.7	-0.1	0.4	0.1	0.1

1 Indexes on a December 1982=100 base.

2 Indexes on a December 1997=100 base.

3 Indexes on a December 1988=100 base.

4 Not seasonally adjusted.

NOTE: Index applies to a month as a whole, not to any specific date.

**Table 4. Consumer Price Index for All Urban Consumers (CPI-U): Selected areas, all items index, May 2012**  
 [1982-84=100, unless otherwise noted]

Area	Pricing Schedule <sup>1</sup>	Percent change to May 2012 from:			Percent change to Apr. 2012 from:		
		May 2011	Mar. 2012	Apr. 2012	Apr. 2011	Feb. 2012	Mar. 2012
U.S. city average.....	M	1.7	0.2	-0.1	2.3	1.1	0.3
<b>Region and area size<sup>2</sup></b>							
Northeast urban.....	M	1.7	0.2	-0.1	2.3	0.8	0.3
Size A - More than 1,500,000.....	M	1.7	0.3	0.0	2.3	0.8	0.3
Size B/C - 50,000 to 1,500,000 <sup>3</sup> ...	M	1.8	0.2	-0.1	2.4	0.9	0.3
Midwest urban.....	M	1.5	0.1	-0.1	2.3	1.2	0.2
Size A - More than 1,500,000.....	M	1.4	0.1	0.0	2.2	1.0	0.1
Size B/C - 50,000 to 1,500,000 <sup>3</sup> ...	M	1.7	0.1	-0.1	2.4	1.5	0.3
Size D - Nonmetropolitan (less than 50,000).....	M	1.4	-0.2	-0.6	2.5	1.0	0.4
South urban.....	M	1.6	0.0	-0.4	2.5	1.1	0.4
Size A - More than 1,500,000.....	M	1.5	0.0	-0.4	2.4	1.1	0.4
Size B/C - 50,000 to 1,500,000 <sup>3</sup> ...	M	1.7	0.1	-0.4	2.5	1.1	0.5
Size D - Nonmetropolitan (less than 50,000).....	M	1.7	-0.3	-0.7	2.7	1.1	0.3
West urban.....	M	2.0	0.4	0.2	2.1	1.1	0.2
Size A - More than 1,500,000.....	M	2.1	0.4	0.2	2.1	1.0	0.2
Size B/C - 50,000 to 1,500,000 <sup>3</sup> ...	M	1.6	0.4	0.2	1.8	1.2	0.3
<b>Size classes</b>							
A <sup>4</sup> .....	M	1.7	0.2	0.0	2.2	1.0	0.2
B/C <sup>3</sup> .....	M	1.7	0.2	-0.2	2.3	1.2	0.4
D.....	M	1.9	0.0	-0.4	2.8	1.2	0.4
<b>Selected local areas<sup>5</sup></b>							
Chicago-Gary-Kenosha, IL-IN-WI.....	M	1.0	0.0	-0.1	1.7	1.3	0.0
Los Angeles-Riverside-Orange County, CA.....	M	1.6	0.0	0.1	1.5	1.0	0.0
New York-Northern N.J.-Long Island, NY-NJ-CT-PA.....	M	1.8	0.3	0.1	2.4	0.8	0.2
Boston-Brockton-Nashua, MA-NH-ME-CT.....	1	0.8	-0.2				
Cleveland-Akron, OH.....	1	1.1	-0.1				
Dallas-Fort Worth, TX.....	1	1.6	-0.2				
Washington-Baltimore, DC-MD-VA-WV <sup>6</sup> .....	1	1.8	0.1				
Atlanta, GA.....	2				1.8	1.1	
Detroit-Ann Arbor-Flint, MI.....	2				2.1	0.6	
Houston-Galveston-Brazoria, TX.....	2				2.2	0.9	
Miami-Fort Lauderdale, FL.....	2				2.0	0.9	
Philadelphia-Wilmington-Atlantic City, PA-NJ-DE-MD.....	2				2.0	0.8	

See footnotes at end of table.

**Table 4. Consumer Price Index for All Urban Consumers (CPI-U): Selected areas, all items index, May 2012 — Continued**

[1982-84=100, unless otherwise noted]

Area	Pricing Schedule <sup>1</sup>	Percent change to May 2012 from:			Percent change to Apr. 2012 from:		
		May 2011	Mar. 2012	Apr. 2012	Apr. 2011	Feb. 2012	Mar. 2012
San Francisco-Oakland-San Jose, CA.....	2				2.1	0.9	
Seattle-Tacoma-Bremerton, WA.....	2				2.9	0.9	

1 Foods, fuels, and several other items are priced every month in all areas. Most other goods and services are priced as indicated: M - Every month. 1 - January, March, May, July, September, and November. 2 - February, April, June, August, October, and December.

2 Regions defined as the four Census regions.

3 Indexes on a December 1996=100 base.

4 Indexes on a December 1986=100 base.

5 In addition, the following metropolitan areas are published semiannually and appear in Tables 34 and 39 of the January and July issues of the CPI Detailed Report: Anchorage, AK; Cincinnati-Hamilton, OH-KY-IN; Denver-Boulder-Greeley, CO; Honolulu, HI; Kansas City, MO-KS; Milwaukee-Racine, WI; Minneapolis-St. Paul, MN-WI; Phoenix-Mesa, AZ; Pittsburgh, PA; Portland-Salem, OR-WA; St. Louis, MO-IL; San Diego, CA; Tampa-St. Petersburg-Clearwater, FL.

6 Indexes on a November 1996=100 base.

NOTE: Local area indexes are byproducts of the national CPI program. Each local index has a smaller sample size than the national index and is, therefore, subject to substantially more sampling and other measurement error. As a result, local area indexes show greater volatility than the national index, although their long-term trends are similar. Therefore, the Bureau of Labor Statistics strongly urges users to consider adopting the national average CPI for use in their escalator clauses.

NOTE: Index applies to a month as a whole, not to any specific date.

**Table 5. Chained Consumer Price Index for All Urban Consumers (C-CPI-U) and the Consumer Price Index for All Urban Consumers (CPI-U): U.S. city average, all items index, May 2012**  
 [Percent changes]

Month Year	Unadjusted 1-month percent change		Unadjusted 12-month percent change	
	C-CPI-U <sup>1</sup>	CPI-U	C-CPI-U <sup>1</sup>	CPI-U
December 2000.....			2.6	3.4
December 2001.....			1.3	1.6
December 2002.....			2.0	2.4
December 2003.....			1.7	1.9
December 2004.....			3.2	3.3
December 2005.....			2.9	3.4
December 2006.....			2.3	2.5
December 2007.....			3.7	4.1
December 2008.....			0.2	0.1
December 2009.....			2.5	2.7
January 2010.....	0.4	0.3	2.4	2.6
February 2010.....	0.0	0.0	1.9	2.1
March 2010.....	0.4	0.4	2.1	2.3
April 2010.....	0.1	0.2	2.1	2.2
May 2010.....	0.0	0.1	1.8	2.0
June 2010.....	-0.1	-0.1	0.8	1.1
July 2010.....	0.0	0.0	1.0	1.2
August 2010.....	0.2	0.1	0.9	1.1
September 2010.....	0.1	0.1	0.9	1.1
October 2010.....	0.1	0.1	0.9	1.2
November 2010.....	0.0	0.0	0.9	1.1
December 2010.....	0.2	0.2	1.3	1.5
January 2011.....	0.4	0.5	1.4	1.6
February 2011.....	0.5	0.5	1.9	2.1
March 2011.....	0.8	1.0	2.3	2.7
April 2011.....	0.6	0.6	2.7	3.2
May 2011.....	0.4	0.5	3.1	3.6
June 2011.....	0.0	-0.1	3.2	3.6
July 2011.....	0.1	0.1	3.3	3.6
August 2011.....	0.3	0.3	3.4	3.8
September 2011.....	0.2	0.2	3.5	3.9
October 2011.....	-0.2	-0.2	3.2	3.5
November 2011.....	-0.1	-0.1	3.1	3.4
December 2011.....	-0.2	-0.2	2.7	3.0
January 2012.....	0.4	0.4	2.7	2.9
February 2012.....	0.4	0.4	2.6	2.9
March 2012.....	0.6	0.8	2.4	2.7
April 2012.....	0.3	0.3	2.1	2.3
May 2012.....	-0.1	-0.1	1.6	1.7

<sup>1</sup> The C-CPI-U is designed to be a closer approximation to a cost-of-living index in that it, in its final form, accounts for any substitution that consumers make across item categories in response to changes in relative prices. Since the expenditure data required for the calculation of the C-CPI-U are available only with a time lag, the C-CPI-U is being issued first in preliminary form using the latest available expenditure data at that time and is subject to two revisions.

NOTE: Indexes for 2012 are initial estimates. Indexes for 2011 are interim adjustments. Data prior to 2011 are final.

NOTE: Index applies to a month as a whole, not to any specific date.

**Table 6. Consumer Price Index for All Urban Consumers (CPI-U): U.S. city average, by expenditure category, May 2012, 1-month analysis table**  
 [1982-84=100, unless otherwise noted]

Expenditure category	Relative importance Apr. 2012	One Month				
		Seasonally adjusted percent change Apr. 2012-May 2012	Seasonally adjusted effect on All Items Apr. 2012-May 2012 <sup>1</sup>	Standard error, median price change <sup>2</sup>	Largest (L) or Smallest (S) seasonally adjusted change since: <sup>3</sup>	
					Date	Percent change
All items.....	100.000	-0.3		0.03	S-Dec.2008	-0.8
Food.....	14.151	0.0	0.004	0.08	S-Feb.2012	0.0
Food at home.....	8.537	-0.1	-0.009	0.14	S-Jun.2010	-0.1
Cereals and bakery products.....	1.228	-0.1	-0.002	0.35	S-Mar.2012	-0.2
Cereals and cereal products.....	0.473	0.0	0.000	0.50	S-Mar.2012	-0.3
Flour and prepared flour mixes.....	0.052	-0.8	0.000	0.88	S-Jan.2012	-1.3
Breakfast cereal <sup>4</sup> .....	0.290	0.6	0.002	0.69	L-Dec.2011	0.7
Rice, pasta, cornmeal <sup>4</sup> .....	0.131	0.4	0.001	0.72	S-Mar.2012	-1.3
Rice <sup>4, 5, 6</sup> .....		-0.8		0.81	S-Mar.2012	-1.4
Bakery products.....	0.754	-0.3	-0.002	0.43	S-Jan.2012	-0.3
Bread <sup>5</sup> .....	0.222	-0.2	0.000	0.89	S-Mar.2012	-0.4
White bread <sup>4, 6</sup> .....		0.1		1.19	S-Mar.2012	-0.6
Bread other than white <sup>4, 6</sup> .....		0.3		1.30	S-Mar.2012	-0.2
Fresh biscuits, rolls, muffins <sup>4, 5</sup> .....	0.111	0.5	0.001	0.61	L-Sep.2011	1.2
Cakes, cupcakes, and cookies.....	0.184	-0.9	-0.002	0.88	S-Feb.2011	-1.7
Cookies <sup>4, 6</sup> .....		-0.2		0.95	S-Mar.2012	-0.6
Fresh cakes and cupcakes <sup>4, 6</sup> .....		-2.2		0.97	S-Sep.1997	-2.3
Other bakery products.....	0.237	-0.6	-0.002	0.78	S-Mar.2012	-0.6
Fresh sweetrolls, coffeecakes, doughnuts <sup>4, 6</sup> ...		1.3		0.92	L-Jan.2012	1.9
Crackers, bread, and cracker products <sup>6</sup> .....		-0.7		1.17	S-Mar.2012	-1.7
Frozen and refrigerated bakery products, pies, tarts, turnovers <sup>5</sup> .....		-1.3		1.11	S-Apr.2011	-2.0
Meats, poultry, fish, and eggs.....	1.940	-0.5	-0.011	0.23	S-Sep.2009	-0.8
Meats, poultry, and fish.....	1.832	-0.6	-0.012	0.24	S-Sep.2009	-0.7
Meats.....	1.187	-0.3	-0.004	0.28	S-Jun.2011	-0.5
Beef and veal <sup>4</sup> .....	0.551	0.6	0.003	0.41	L-Mar.2012	0.8
Uncooked ground beef <sup>4</sup> .....	0.215	1.4	0.003	0.60	L-Jan.2012	1.8
Uncooked beef roasts <sup>4, 5</sup> .....	0.080	0.1	0.000	1.10	L-Feb.2012	1.1
Uncooked beef steaks <sup>4, 5</sup> .....	0.205	0.1	0.000	0.79	S-Feb.2012	-0.9
Uncooked other beef and veal <sup>4, 5</sup> .....	0.051	0.6	0.000	0.73	L-Mar.2012	1.2
Pork.....	0.371	-2.4	-0.009	0.48	S-Jul.1983	-2.9
Bacon, breakfast sausage, and related products <sup>5</sup> .....	0.139	-1.6	-0.002	0.84	S-Dec.2010	-3.1
Bacon and related products <sup>6</sup> .....		-3.4		1.07	S-Dec.2010	-5.2
Breakfast sausage and related products <sup>4, 5, 6</sup> .....		2.8		1.23	L-Jan.2011	2.8
Ham.....	0.079	-1.3	-0.001	0.98	S-Jan.2012	-2.2
Ham, excluding canned <sup>6</sup> .....		-1.3		1.04	S-Jan.2012	-2.0
Pork chops.....	0.061	-1.9	-0.001	1.02	S-Feb.2012	-2.2
Other pork including roasts and picnics <sup>5</sup> .....	0.092	-4.2	-0.004	1.09	S-EVER	-
Other meats.....	0.265	0.6	0.002	0.63	L-Mar.2012	0.7
Frankfurters <sup>6</sup> .....		1.8		2.08	L-Feb.2012	2.3
Lunchmeats <sup>4, 5, 6</sup> .....		-0.3		0.64	L-Mar.2012	0.2
Lamb and organ meats <sup>4, 6</sup> .....		-2.1		1.06	S-Mar.2009	-4.0
Lamb and mutton <sup>4, 5, 6</sup> .....		-6.0		1.19	S-Mar.2009	-7.6
Poultry.....	0.339	-1.3	-0.004	0.62	S-Jul.2009	-1.7
Chicken <sup>5</sup> .....	0.265	-1.9	-0.005	0.80	S-Jul.2009	-2.3
Fresh whole chicken <sup>4, 6</sup> .....		-4.8		1.91	S-Jan.2003	-4.9
Fresh and frozen chicken parts <sup>4, 6</sup> .....		-0.8		0.85	S-Dec.2010	-1.3
Other poultry including turkey <sup>5</sup> .....	0.075	0.8	0.001	0.80	L-Mar.2012	1.5
Fish and seafood <sup>4</sup> .....	0.305	-1.2	-0.004	0.52	S-Oct.2009	-1.5
Fresh fish and seafood <sup>4, 5</sup> .....	0.157	-0.2	0.000	0.75	S-Feb.2012	-1.5
Processed fish and seafood <sup>5</sup> .....	0.148	-1.4	-0.002	0.70	S-Sep.2009	-1.5

See footnotes at end of table.

**Table 6. Consumer Price Index for All Urban Consumers (CPI-U): U.S. city average, by expenditure category, May 2012, 1-month analysis table — Continued**  
 [1982-84=100, unless otherwise noted]

Expenditure category	Relative importance Apr. 2012	One Month				
		Seasonally adjusted percent change Apr. 2012-May 2012	Seasonally adjusted effect on All Items Apr. 2012-May 2012 <sup>1</sup>	Standard error, median price change <sup>2</sup>	Largest (L) or Smallest (S) seasonally adjusted change since: <sup>3</sup>	
					Date	Percent change
Shelf stable fish and seafood <sup>4, 6</sup> .....		-1.3		1.17	S-Apr.2011	-2.9
Frozen fish and seafood <sup>4, 6</sup> .....		0.1		1.03	S-Feb.2012	-1.5
Eggs.....	0.108	1.2	0.001	0.77	S-Feb.2012	-6.4
Dairy and related products <sup>4</sup> .....	0.893	-0.4	-0.003	0.31	L-Mar.2012	-0.1
Milk <sup>4, 5</sup> .....	0.288	0.0	0.000	0.33	L-Jan.2012	0.7
Fresh whole milk <sup>4, 6</sup> .....		0.1		0.44	L-Jan.2012	0.2
Fresh milk other than whole <sup>4, 5, 6</sup> .....		0.0		0.48	L-Jan.2012	1.1
Cheese and related products <sup>4</sup> .....	0.283	-0.7	-0.002	0.59	L-Mar.2012	-0.6
Ice cream and related products.....	0.137	0.6	0.001	0.83	L-Mar.2012	1.8
Other dairy and related products <sup>5</sup> .....	0.184	-0.6	-0.001	0.61	L-Mar.2012	0.3
Fruits and vegetables.....	1.253	0.4	0.005	0.37	S-Mar.2012	-0.4
Fresh fruits and vegetables.....	0.950	0.7	0.007	0.47	S-Mar.2012	-0.4
Fresh fruits.....	0.500	-0.1	0.000	0.63	S-Jan.2012	-1.8
Apples.....	0.084	-0.4	0.000	1.15	S-Mar.2012	-1.5
Bananas.....	0.081	-0.3	0.000	0.82	S-Feb.2012	-2.1
Citrus fruits <sup>5</sup> .....	0.105	0.6	0.001	1.48	S-Feb.2012	-1.4
Oranges, including tangerines <sup>6</sup> .....		0.8		1.73	S-Feb.2012	-3.5
Other fresh fruits <sup>5</sup> .....	0.230	-0.4	-0.001	1.07	S-Jan.2012	-3.1
Fresh vegetables.....	0.450	1.6	0.007	0.63	L-Mar.2011	3.6
Potatoes.....	0.083	-2.4	-0.002	1.06	S-Jun.2011	-3.2
Lettuce.....	0.057	3.1	0.002	1.57	L-Mar.2011	9.2
Tomatoes <sup>4</sup> .....	0.075	-3.6	-0.003	1.80	S-Feb.2012	-5.7
Other fresh vegetables.....	0.235	1.3	0.003	0.91	S-Mar.2012	-0.2
Processed fruits and vegetables <sup>5</sup> .....	0.304	-0.4	-0.001	0.47	S-Jan.2012	-0.8
Canned fruits and vegetables <sup>5</sup> .....	0.152	-1.7	-0.003	0.69	S-Mar.2008	-1.7
Canned fruits <sup>5, 6</sup> .....		-2.1		0.81	S-Nov.2003	-3.3
Canned vegetables <sup>5, 6</sup> .....		-1.3		0.98	S-Dec.2011	-1.3
Frozen fruits and vegetables <sup>5</sup> .....	0.095	0.8	0.001	0.87	L-Feb.2012	1.1
Frozen vegetables <sup>6</sup> .....		1.6		1.04	L-Oct.2011	2.6
Other processed fruits and vegetables including dried <sup>5</sup> .....	0.057	0.5	0.000	0.79	L-Mar.2012	0.8
Dried beans, peas, and lentils <sup>4, 5, 6</sup> .....		-0.3		1.19	S-Mar.2012	-0.6
Nonalcoholic beverages and beverage materials.....	0.947	-0.6	-0.005	0.42	S-Dec.2010	-1.1
Juices and nonalcoholic drinks <sup>5</sup> .....	0.706	-0.3	-0.002	0.50	S-Jan.2012	-0.3
Carbonated drinks.....	0.288	-0.3	-0.001	0.72	S-Mar.2012	-0.8
Frozen noncarbonated juices and drinks <sup>4, 5</sup> .....	0.014	-0.4	0.000	1.09	S-Jun.2011	-1.0
Nonfrozen noncarbonated juices and drinks <sup>4, 5</sup> .....	0.404	-0.4	-0.002	0.65	S-Feb.2012	-0.5
Beverage materials including coffee and tea <sup>5</sup> .....	0.241	-1.0	-0.002	0.59	S-Dec.2010	-1.0
Coffee.....	0.147	-1.5	-0.002	0.81	S-Dec.2010	-1.8
Roasted coffee <sup>6</sup> .....		-1.6		0.77	L-Mar.2012	-0.2
Instant and freeze dried coffee <sup>4, 6</sup> .....		0.0		1.18	S-Mar.2012	-2.6
Other beverage materials including tea <sup>5</sup> .....	0.094	-1.6	-0.001	0.77	S-Sep.2008	-1.6
Other food at home.....	2.276	0.3	0.007	0.26	L-Mar.2012	0.3
Sugar and sweets <sup>4</sup> .....	0.308	-0.5	-0.002	0.59	S-Nov.2011	-1.7
Sugar and artificial sweeteners.....	0.060	0.1	0.000	0.49	S-Mar.2012	-1.0
Candy and chewing gum <sup>4, 5</sup> .....	0.184	-1.2	-0.002	0.92	S-Nov.2011	-1.9
Other sweets <sup>5</sup> .....	0.063	1.1	0.001	0.71	L-Feb.2012	1.2
Fats and oils.....	0.262	0.1	0.000	0.51	L-Mar.2012	0.8
Butter and margarine <sup>5</sup> .....	0.074	0.1	0.000	0.79	L-Mar.2012	0.1
Butter <sup>6</sup> .....		1.7		1.21	L-Jan.2012	3.7
Margarine <sup>6</sup> .....		-0.7		1.06	S-Jan.2012	-1.3
Salad dressing <sup>4, 5</sup> .....	0.066	-0.3	0.000	0.80	L-Mar.2012	0.5
Other fats and oils including peanut butter <sup>5</sup> .....	0.122	0.1	0.000	0.91	S-Feb.2012	-0.7

See footnotes at end of table.

**Table 6. Consumer Price Index for All Urban Consumers (CPI-U): U.S. city average, by expenditure category, May 2012, 1-month analysis table — Continued**  
 [1982-84=100, unless otherwise noted]

Expenditure category	Relative importance Apr. 2012	One Month				
		Seasonally adjusted percent change Apr. 2012-May 2012	Seasonally adjusted effect on All Items Apr. 2012-May 2012 <sup>1</sup>	Standard error, median price change <sup>2</sup>	Largest (L) or Smallest (S) seasonally adjusted change since: <sup>3</sup>	
					Date	Percent change
Peanut butter <sup>4, 5, 6</sup> .....		-0.6		1.09	S-Mar.2011	-1.2
Other foods.....	1.706	0.5	0.008	0.31	L-Feb.2012	0.6
Soups.....	0.100	-0.9	-0.001	1.05	S-Dec.2011	-1.1
Frozen and freeze dried prepared foods <sup>4</sup> .....	0.302	-0.1	0.000	0.76	L-Mar.2012	1.0
Snacks <sup>4</sup> .....	0.321	1.4	0.005	0.75	L-Aug.2011	2.0
Spices, seasonings, condiments, sauces.....	0.288	-2.2	-0.006	0.75	S-May 2002	-2.4
Salt and other seasonings and spices <sup>5, 6</sup> .....		0.7		0.81	L-Jan.2012	2.8
Olives, pickles, relishes <sup>4, 5, 6</sup> .....		-2.7		1.36	S-Dec.2011	-4.2
Sauces and gravies <sup>5, 6</sup> .....		-2.0		1.40	S-Sep.2011	-2.3
Other condiments <sup>4, 6</sup> .....		-0.5		0.74	S-Mar.2012	-0.9
Baby food <sup>4, 5</sup> .....	0.071	0.0	0.000	0.51	L-Mar.2012	0.0
Other miscellaneous foods <sup>4, 5</sup> .....	0.624	0.9	0.006	0.57	S-Mar.2012	-0.3
Prepared salads <sup>4, 7, 6</sup> .....		2.0		0.89	L-Jun.2010	4.7
Food away from home <sup>4</sup> .....	5.614	0.2	0.014	0.06	S-Mar.2012	0.2
Full service meals and snacks <sup>4, 5</sup> .....	2.664	0.2	0.005	0.07	—	—
Limited service meals and snacks <sup>4, 5</sup> .....	2.257	0.3	0.008	0.10	S-Mar.2012	0.3
Food at employee sites and schools <sup>5</sup> .....	0.256	0.3	0.001	0.14	—	—
Food at elementary and secondary schools <sup>4, 8, 6</sup> .....		0.0		0.12	—	—
Food from vending machines and mobile vendors <sup>4, 5</sup> .....	0.081	0.3	0.000	0.23	L-Jan.2012	0.8
Other food away from home <sup>4, 5</sup> .....	0.357	0.1	0.000	0.12	—	—
Energy.....	10.451	-4.3	-0.441	0.11	S-Dec.2008	-9.1
Energy commodities.....	6.733	-6.4	-0.412	0.11	S-Dec.2008	-17.8
Fuel oil and other fuels <sup>4</sup> .....	0.348	-3.2	-0.011	0.42	S-Mar.2009	-4.7
Fuel oil <sup>4</sup> .....	0.238	-2.8	-0.007	0.54	S-Jun.2010	-3.2
Propane, kerosene, and firewood <sup>4, 9</sup> .....	0.110	-3.0	-0.003	0.44	S-Apr.2009	-3.6
Motor fuel.....	6.385	-6.6	-0.401	0.11	S-Dec.2008	-18.5
Gasoline (all types).....	6.186	-6.8	-0.396	0.12	S-Dec.2008	-18.7
Gasoline, unleaded regular <sup>6</sup> .....		-6.9		0.28	S-Dec.2008	-19.2
Gasoline, unleaded midgrade <sup>10, 6</sup> .....		-6.6		0.27	S-Dec.2008	-17.8
Gasoline, unleaded premium <sup>6</sup> .....		-5.8		0.27	S-Dec.2008	-17.7
Other motor fuels <sup>5</sup> .....	0.199	-5.4	-0.011	0.16	L-Mar.2012	3.7
Energy services <sup>11</sup> .....	3.718	-0.7	-0.028	0.16	S-Feb.2012	-0.8
Electricity <sup>11</sup> .....	2.853	0.3	0.008	0.18	L-Sep.2011	0.6
Utility (piped) gas service <sup>11</sup> .....	0.865	-4.1	-0.036	0.18	S-May 2009	-5.8
All items less food and energy.....	75.398	0.2	0.152	0.04	—	—
Commodities less food and energy commodities.....	19.757	0.2	0.031	0.09	—	—
Household furnishings and supplies <sup>12</sup> .....	3.337	-0.2	-0.006	0.15	S-Nov.2011	-0.2
Window and floor coverings and other linens <sup>4, 5</sup> .....	0.275	-1.1	-0.003	0.62	S-Dec.2010	-1.6
Floor coverings <sup>4, 5</sup> .....	0.039	0.2	0.000	0.55	S-Mar.2012	-0.4
Window coverings <sup>4, 5</sup> .....	0.076	0.0	0.000	0.68	S-Mar.2012	-0.9
Other linens <sup>4, 5</sup> .....	0.160	-2.0	-0.003	0.92	S-Dec.2010	-2.8
Furniture and bedding <sup>4</sup> .....	0.716	0.2	0.001	0.34	L-Mar.2012	0.8
Bedroom furniture <sup>4</sup> .....	0.233	-0.2	0.000	0.65	L-Mar.2012	0.9
Living room, kitchen, and dining room furniture <sup>4, 5</sup> .....	0.341	0.8	0.003	0.42	L-Jun.2011	1.8
Other furniture <sup>5</sup> .....	0.134	-1.3	-0.002	0.73	S-Jul.2011	-3.5
Infants' furniture <sup>4, 8, 6</sup> .....						
Appliances <sup>5</sup> .....	0.289	-0.6	-0.002	0.38	—	—
Major appliances <sup>5</sup> .....	0.167	-0.7	-0.001	0.48	S-Nov.2011	-1.5
Laundry equipment <sup>6</sup> .....		-0.1		0.58	L-Mar.2012	1.1
Other appliances <sup>4, 5</sup> .....	0.119	-0.4	0.000	0.59	S-Mar.2012	-1.1
Other household equipment and furnishings <sup>4, 5</sup> .....	0.491	0.0	0.000	0.41	L-Feb.2012	0.8
Clocks, lamps, and decorator items <sup>4</sup> .....	0.258	0.3	0.001	0.51	L-Feb.2012	0.7

See footnotes at end of table.



**Table 6. Consumer Price Index for All Urban Consumers (CPI-U): U.S. city average, by expenditure category, May 2012, 1-month analysis table — Continued**  
 [1982-84=100, unless otherwise noted]

Expenditure category	Relative importance Apr. 2012	One Month				
		Seasonally adjusted percent change Apr. 2012-May 2012	Seasonally adjusted effect on All Items Apr. 2012-May 2012 <sup>1</sup>	Standard error, median price change <sup>2</sup>	Largest (L) or Smallest (S) seasonally adjusted change since: <sup>3</sup>	
					Date	Percent change
Indoor plants and flowers <sup>13</sup> .....	0.101	-0.1	0.000	0.69	—	—
Dishes and flatware <sup>4, 5</sup> .....	0.047	-1.8	-0.001	1.02	S-Mar.2012	-2.2
Nonelectric cookware and tableware <sup>5</sup> .....	0.084	-0.4	0.000	0.51	S-Mar.2012	-0.4
Tools, hardware, outdoor equipment and supplies <sup>5</sup> . . .	0.681	-0.3	-0.002	0.28	S-Mar.2012	-0.7
Tools, hardware and supplies <sup>4, 5</sup> .....	0.172	0.1	0.000	0.35	—	—
Outdoor equipment and supplies <sup>5</sup> .....	0.363	-0.6	-0.002	0.32	S-Mar.2012	-0.9
Housekeeping supplies <sup>4</sup> .....	0.886	-0.4	-0.004	0.27	S-Apr.2010	-0.8
Household cleaning products <sup>4, 5</sup> .....	0.358	-0.4	-0.002	0.40	L-Mar.2012	0.0
Household paper products <sup>4, 5</sup> .....	0.240	-0.1	0.000	0.38	—	—
Miscellaneous household products <sup>4, 5</sup> .....	0.287	-0.6	-0.002	0.47	S-Mar.2012	-0.7
Apparel.....	3.636	0.4	0.013	0.39	—	—
Men's and boys' apparel.....	0.876	0.1	0.001	0.61	S-Feb.2012	-1.7
Men's apparel.....	0.690	0.5	0.004	0.65	L-Jan.2012	1.7
Men's suits, sport coats, and outerwear.....	0.125	0.5	0.001	1.77	L-Jan.2012	6.3
Men's furnishings.....	0.180	3.5	0.006	0.98	L-Sep.1997	3.5
Men's shirts and sweaters <sup>5</sup> .....	0.217	-2.7	-0.006	1.49	S-Apr.2009	-3.3
Men's pants and shorts.....	0.161	1.7	0.003	1.32	L-Jan.2012	1.9
Boys' apparel.....	0.185	-2.6	-0.005	1.48	S-Sep.2010	-2.7
Women's and girls' apparel.....	1.558	0.5	0.008	0.75	S-Mar.2012	0.3
Women's apparel.....	1.305	0.7	0.009	0.82	S-Mar.2012	0.3
Women's outerwear.....	0.089	-4.5	-0.004	3.37	S-Sep.2011	-5.4
Women's dresses.....	0.184	-2.0	-0.004	2.67	L-Mar.2012	8.8
Women's suits and separates <sup>5</sup> .....	0.622	2.3	0.014	1.10	S-Mar.2012	-1.5
Women's underwear, nightwear, sportswear and accessories <sup>5</sup> .....	0.395	-0.7	-0.003	1.16	S-Mar.2012	-1.1
Girls' apparel.....	0.252	-0.3	-0.001	2.09	S-Feb.2012	-2.6
Footwear.....	0.683	0.8	0.006	0.56	L-May 2011	1.2
Men's footwear <sup>4</sup> .....	0.209	0.6	0.001	0.85	S-Mar.2012	0.1
Boys' and girls' footwear.....	0.150	0.5	0.001	1.22	S-Feb.2012	-1.4
Women's footwear.....	0.324	0.8	0.002	0.86	L-Mar.2012	1.0
Infants' and toddlers' apparel.....	0.199	1.6	0.003	1.00	L-Jan.2012	1.6
Jewelry and watches <sup>9</sup> .....	0.321	-1.3	-0.004	1.36	L-Mar.2012	0.5
Watches <sup>4, 9</sup> .....	0.089	-1.4	-0.001	0.78	S-Sep.2010	-1.5
Jewelry <sup>9</sup> .....	0.232	-1.5	-0.003	1.56	L-Mar.2012	0.2
Transportation commodities less motor fuel <sup>12</sup> .....	5.583	0.5	0.026	0.07	S-Feb.2012	0.3
New vehicles.....	3.168	0.2	0.006	0.11	S-Mar.2012	0.2
New cars and trucks <sup>5, 6</sup> .....		0.2		0.10	S-Mar.2012	0.2
New cars <sup>6</sup> .....		0.1		0.15	S-Jan.2012	-0.2
New trucks <sup>14, 6</sup> .....		0.2		0.11	S-Mar.2012	0.2
Used cars and trucks.....	1.914	1.0	0.020	0.02	S-Feb.2012	-0.2
Motor vehicle parts and equipment <sup>4</sup> .....	0.432	0.1	0.001	0.20	L-Feb.2012	0.1
Tires <sup>4</sup> .....	0.294	0.0	0.000	0.25	S-Mar.2012	-0.3
Vehicle accessories other than tires <sup>4, 5</sup> .....	0.138	0.5	0.001	0.25	L-Mar.2012	0.7
Vehicle parts and equipment other than tires <sup>4, 6</sup> .....		0.7		0.25	L-Sep.2011	0.8
Motor oil, coolant, and fluids <sup>4, 6</sup> .....		0.1		0.64	S-Feb.2012	-0.4
Medical care commodities <sup>4</sup> .....	1.713	0.0	0.000	0.14	—	—
Medicinal drugs <sup>4, 12</sup> .....	1.635	0.0	0.000	0.15	—	—
Prescription drugs.....	1.325	0.0	0.000	0.14	—	—
Nonprescription drugs <sup>4, 12</sup> .....	0.310	0.5	0.002	0.49	L-Mar.2012	1.0
Medical equipment and supplies <sup>4, 12</sup> .....	0.078	1.0	0.001	0.47	L-Oct.2011	1.6
Recreation commodities <sup>12</sup> .....	2.305	-0.1	-0.002	0.18	L-Feb.2012	0.3
Video and audio products <sup>12</sup> .....	0.420	-0.4	-0.002	0.28	L-Jan.2012	-0.2

See footnotes at end of table.

**Table 6. Consumer Price Index for All Urban Consumers (CPI-U): U.S. city average, by expenditure category, May 2012, 1-month analysis table — Continued**  
 [1982-84=100, unless otherwise noted]

Expenditure category	Relative importance Apr. 2012	One Month				
		Seasonally adjusted percent change Apr. 2012-May 2012	Seasonally adjusted effect on All Items Apr. 2012-May 2012 <sup>1</sup>	Standard error, median price change <sup>2</sup>	Largest (L) or Smallest (S) seasonally adjusted change since: <sup>3</sup>	
					Date	Percent change
Televisions.....	0.165	0.2	0.000	0.64	L-Oct.2007	0.5
Other video equipment <sup>4</sup> . 5 .....	0.027	-1.3	0.000	0.61	S-Mar.2012	-2.3
Audio equipment <sup>4</sup> .....	0.072	-2.0	-0.001	0.45	S-Nov.2008	-2.0
Audio discs, tapes and other media <sup>4</sup> . 5 .....	0.044	-0.2	0.000	0.47	L-Mar.2012	-0.2
Pets and pet products <sup>4</sup> .....	0.686	-0.1	0.000	0.39	—	—
Pet food <sup>4</sup> . 5 . 6 .....		-0.1		0.41	S-Dec.2011	-0.1
Purchase of pets, pet supplies, accessories <sup>4</sup> . 5 . 6 ...		-0.1		0.76	L-Mar.2012	0.6
Sporting goods <sup>4</sup> .....	0.460	-0.3	-0.001	0.31	S-Mar.2012	-0.3
Sports vehicles including bicycles <sup>4</sup> .....	0.239	-0.2	-0.001	0.33	L-Feb.2012	0.5
Sports equipment <sup>4</sup> .....	0.211	-0.3	-0.001	0.53	S-Dec.2011	-0.7
Photographic equipment and supplies.....	0.054	-1.7	-0.001	0.62	S-Aug.2010	-1.8
Film and photographic supplies <sup>4</sup> . 5 . 6 .....		-0.4		0.73	S-Jan.2012	-0.4
Photographic equipment <sup>5</sup> . 6 .....		-1.9		0.82	S-Jan.2012	-2.0
Recreational reading materials <sup>4</sup> .....	0.222	0.4	0.001	0.34	L-Mar.2012	0.7
Newspapers and magazines <sup>4</sup> . 5 .....	0.120	0.8	0.001	0.48	L-Mar.2012	1.1
Recreational books <sup>4</sup> . 5 .....	0.098	-0.1	0.000	0.47	S-Feb.2012	-0.2
Other recreational goods <sup>5</sup> .....	0.464	0.3	0.001	0.44	L-Feb.2012	0.7
Toys <sup>4</sup> .....	0.345	0.4	0.001	0.53	L-Feb.2012	1.1
Toys, games, hobbies and playground equipment <sup>4</sup> . 5 . 6 .....		0.7		0.51	L-Feb.2012	2.2
Sewing machines, fabric and supplies <sup>5</sup> .....	0.061	0.1	0.000	0.91	S-Feb.2012	-0.6
Music instruments and accessories <sup>5</sup> .....	0.039	0.1	0.000	0.42	S-Mar.2012	-0.2
Education and communication commodities <sup>12</sup> .....	0.595	0.6	0.004	0.34	L-EVER	—
Educational books and supplies.....	0.200	0.8	0.002	0.29	L-Jan.2012	0.8
College textbooks <sup>4</sup> . 15 . 6 .....		0.7		0.24	L-Jan.2012	1.4
Information technology commodities <sup>12</sup> .....	0.395	0.5	0.002	0.43	L-EVER	—
Personal computers and peripheral equipment <sup>7</sup> .....	0.260	0.9	0.002	0.51	L-EVER	—
Computer software and accessories <sup>4</sup> . 5 .....	0.048	0.1	0.000	0.75	L-Dec.2011	1.7
Telephone hardware, calculators, and other consumer information items <sup>4</sup> . 5 .....	0.087	-0.2	0.000	0.77	L-Mar.2012	-0.2
Alcoholic beverages.....	0.941	0.2	0.002	0.13	L-Feb.2012	0.3
Alcoholic beverages at home.....	0.567	0.4	0.002	0.21	L-Jan.2012	0.8
Beer, ale, and other malt beverages at home.....	0.270	0.5	0.001	0.27	L-Feb.2012	0.5
Distilled spirits at home <sup>4</sup> .....	0.071	-0.4	0.000	0.33	S-Feb.2012	-0.4
Whiskey at home <sup>6</sup> .....		0.4		0.49	S-Mar.2012	-1.2
Distilled spirits, excluding whiskey, at home <sup>4</sup> . 6 ...		-0.2		0.59	S-Dec.2011	-1.1
Wine at home.....	0.226	0.4	0.001	0.37	L-Jan.2012	0.6
Alcoholic beverages away from home <sup>4</sup> .....	0.374	0.5	0.002	0.16	L-Feb.2012	0.5
Beer, ale, and other malt beverages away from home <sup>4</sup> . 5 . 6 .....		0.1		0.13	S-Mar.2012	0.0
Wine away from home <sup>4</sup> . 5 . 6 .....		-0.1		0.20	S-Nov.2011	-0.1
Distilled spirits away from home <sup>4</sup> . 5 . 6 .....		0.9		0.20	—	—
Other goods <sup>12</sup> .....	1.647	-0.5	-0.008	0.19	S-May 2011	-0.5
Tobacco and smoking products <sup>4</sup> .....	0.789	-0.2	-0.001	0.16	S-Mar.2012	-0.3
Cigarettes <sup>4</sup> . 5 .....	0.729	-0.2	-0.001	0.17	S-Mar.2012	-0.3
Tobacco products other than cigarettes <sup>4</sup> . 5 .....	0.053	0.3	0.000	0.46	—	—
Personal care products <sup>4</sup> .....	0.652	-1.0	-0.006	0.37	S-May 2011	-1.2
Hair, dental, shaving, and miscellaneous personal care products <sup>4</sup> . 5 .....	0.342	-1.1	-0.004	0.54	S-May 2011	-1.1
Cosmetics, perfume, bath, nail preparations and implements <sup>4</sup> .....	0.304	-0.9	-0.003	0.56	S-Feb.2012	-0.9
Miscellaneous personal goods <sup>5</sup> .....	0.206	-0.2	0.000	0.44	L-Feb.2012	-0.2
Stationery, stationery supplies, gift wrap <sup>6</sup> .....		0.1		0.46	L-Jan.2012	0.5
Infants' equipment <sup>4</sup> . 8 . 6 .....		-0.4		0.51	S-Aug.2011	-2.3

See footnotes at end of table.

**Table 6. Consumer Price Index for All Urban Consumers (CPI-U): U.S. city average, by expenditure category, May 2012, 1-month analysis table — Continued**  
 [1982-84=100, unless otherwise noted]

Expenditure category	Relative importance Apr. 2012	One Month				
		Seasonally adjusted percent change Apr. 2012-May 2012	Seasonally adjusted effect on All Items Apr. 2012-May 2012 <sup>1</sup>	Standard error, median price change <sup>2</sup>	Largest (L) or Smallest (S) seasonally adjusted change since: <sup>3</sup>	
					Date	Percent change
Services less energy services.....	55.641	0.2	0.121	0.03	S-Mar.2012	0.2
Shelter.....	31.216	0.2	0.048	0.05	—	—
Rent of shelter <sup>16</sup> .....	30.871	0.2	0.056	0.05	—	—
Rent of primary residence <sup>11</sup> .....	6.403	0.2	0.013	0.07	—	—
Lodging away from home <sup>5</sup> .....	0.810	1.5	0.013	0.86	L-Feb.2012	1.9
Housing at school, excluding board <sup>11, 16</sup> .....	0.152	0.4	0.001	0.05	—	—
Other lodging away from home including hotels and motels.....	0.658	1.8	0.012	1.07	L-Feb.2012	2.2
Owners' equivalent rent of residences <sup>11, 16</sup> .....	23.657	0.1	0.022	0.04	S-Feb.2012	0.1
Owners' equivalent rent of primary residence <sup>11, 16</sup> .....	22.261	0.1	0.021	0.04	S-Feb.2012	0.1
Tenants' and household insurance <sup>4, 5</sup> .....	0.346	0.2	0.001	0.21	S-Feb.2012	-0.6
Water and sewer and trash collection services <sup>5</sup> .....	1.163	0.3	0.003	0.13	S-Jan.2012	0.3
Water and sewerage maintenance <sup>11</sup> .....	0.877	0.3	0.003	0.17	S-Jan.2012	0.3
Garbage and trash collection <sup>4, 14</sup> .....	0.286	0.0	0.000	0.15	L-Mar.2012	0.3
Household operations <sup>4, 5</sup> .....	0.724	-0.1	0.000	0.10	S-Sep.2011	-0.1
Domestic services <sup>4, 5</sup> .....	0.248	-0.3	-0.001	0.07	S-Mar.2011	-0.8
Gardening and lawn care services <sup>4, 5</sup> .....	0.236	-0.2	0.000	0.11	S-Oct.2011	-0.2
Moving, storage, freight expense <sup>4, 5</sup> .....	0.090	0.4	0.000	0.43	L-Mar.2012	0.5
Repair of household items <sup>4, 5</sup> .....	0.076	0.5	0.000	0.14	S-Mar.2012	0.3
Medical care services.....	5.330	0.5	0.027	0.06	L-Oct.2011	0.5
Professional services.....	2.964	0.4	0.012	0.08	L-Feb.2011	0.4
Physicians' services <sup>11</sup> .....	1.586	0.2	0.003	0.12	S-Mar.2012	0.2
Dental services <sup>11</sup> .....	0.754	0.1	0.001	0.08	—	—
Eyeglasses and eye care <sup>9</sup> .....	0.250	1.6	0.004	0.23	L-Oct.2005	1.8
Services by other medical professionals <sup>4, 11, 9</sup> .....	0.374	0.2	0.001	0.12	L-Feb.2012	0.3
Hospital and related services.....	1.735	0.6	0.010	0.11	L-May 2011	0.6
Hospital services <sup>11, 17</sup> .....	1.514	0.6	0.009	0.12	—	—
Inpatient hospital services <sup>11, 17, 6</sup> .....	0.136	0.7	0.000	0.18	L-Nov.2011	0.8
Outpatient hospital services <sup>11, 9, 6</sup> .....	0.085	0.5	0.000	0.22	S-Mar.2012	0.2
Nursing homes and adult day services <sup>11, 17</sup> .....	0.136	0.3	0.000	0.12	L-Mar.2012	0.3
Care of invalids and elderly at home <sup>4, 8</sup> .....	0.085	0.1	0.000	0.15	S-Mar.2012	0.0
Health insurance <sup>4, 8</sup> .....	0.631	0.8	0.005	0.07	S-Aug.2011	0.3
Transportation services.....	5.734	0.3	0.018	0.11	S-Mar.2012	0.3
Leased cars and trucks <sup>15</sup> .....	0.388	-1.2	-0.005	0.44	S-Aug.2011	-1.3
Car and truck rental <sup>5</sup> .....	0.069	-2.4	-0.002	1.34	S-Feb.2012	-2.6
Motor vehicle maintenance and repair <sup>4</sup> .....	1.137	0.3	0.004	0.12	L-Jan.2012	0.3
Motor vehicle body work <sup>4</sup> .....	0.057	0.2	0.000	0.14	L-Mar.2012	0.3
Motor vehicle maintenance and servicing <sup>4</sup> .....	0.454	0.2	0.001	0.15	L-Mar.2012	0.2
Motor vehicle repair <sup>4, 5</sup> .....	0.591	0.4	0.002	0.19	L-Jan.2012	0.4
Motor vehicle insurance.....	2.388	0.4	0.010	0.16	—	—
Motor vehicle fees <sup>4, 5</sup> .....	0.557	0.1	0.000	0.12	L-Jan.2012	1.4
State motor vehicle registration and license fees <sup>4, 11, 5</sup> .....	0.324	0.0	0.000	0.12	L-Mar.2012	0.0
Parking and other fees <sup>4, 5</sup> .....	0.210	0.2	0.000	0.16	—	—
Parking fees and tolls <sup>4, 5, 6</sup> .....	0.210	0.2	0.000	0.13	L-Feb.2012	0.3
Automobile service clubs <sup>4, 5, 6</sup> .....	0.000	0.6	0.000	0.26	L-Jan.2012	0.8
Public transportation.....	1.195	0.8	0.010	0.29	S-Mar.2012	0.5
Airline fare.....	0.788	1.0	0.008	0.40	S-Mar.2012	0.4
Other intercity transportation.....	0.148	0.3	0.000	0.66	S-Mar.2012	0.1
Intercity bus fare <sup>4, 7, 6</sup> .....	0.148	-0.8	0.000	0.52	S-Feb.2012	-2.7
Intercity train fare <sup>4, 7, 6</sup> .....	0.000	4.8	0.000	1.24	L-Jun.2011	4.8
Ship fare <sup>4, 5, 6</sup> .....	0.000	-0.3	0.000	0.82	S-Mar.2012	-0.3

See footnotes at end of table.

**Table 6. Consumer Price Index for All Urban Consumers (CPI-U): U.S. city average, by expenditure category, May 2012, 1-month analysis table — Continued**  
 [1982-84=100, unless otherwise noted]

Expenditure category	Relative importance Apr. 2012	One Month				
		Seasonally adjusted percent change Apr. 2012-May 2012	Seasonally adjusted effect on All Items Apr. 2012-May 2012 <sup>1</sup>	Standard error, median price change <sup>2</sup>	Largest (L) or Smallest (S) seasonally adjusted change since: <sup>3</sup>	
					Date	Percent change
Intracity transportation <sup>4</sup> .....	0.257	0.1	0.000	0.07	-	-
Intracity mass transit <sup>4, 12, 6</sup> .....		0.1		0.09	-	-
Recreation services <sup>12</sup> .....	3.683	0.2	0.007	0.19	L-Mar.2012	0.4
Video and audio services <sup>12</sup> .....	1.499	0.4	0.006	0.23	L-Mar.2012	0.5
Cable and satellite television and radio service <sup>14</sup> ..	1.387	0.5	0.007	0.23	L-Mar.2012	0.5
Video discs and other media, including rental of video and audio <sup>4, 5</sup> .....	0.112	-0.2	0.000	0.84	S-Feb.2012	-1.4
Video discs and other media <sup>4, 5, 6</sup> .....		-0.1		1.22	S-Feb.2012	-1.7
Rental of video or audio discs and other media <sup>4, 5, 6</sup> .....		-0.1		0.75	S-Feb.2012	-0.3
Pet services including veterinary <sup>5</sup> .....	0.405	0.1	0.000	0.19	S-Feb.2012	-0.3
Pet services <sup>4, 5, 6</sup> .....		0.0		0.22	L-Mar.2012	0.4
Veterinarian services <sup>5, 6</sup> .....		0.1		0.19	S-Mar.2012	0.1
Photographers and film processing <sup>4, 5</sup> .....	0.058	-0.1	0.000	0.36	S-Feb.2012	-0.2
Photographer fees <sup>4, 5, 6</sup> .....		0.0		0.36	S-Feb.2012	-0.5
Film processing <sup>4, 5, 6</sup> .....		-0.2		0.44	S-Jan.2012	-0.3
Other recreation services <sup>5</sup> .....	1.719	0.0	0.000	0.35	L-Mar.2012	0.4
Club dues and fees for participant sports and group exercises <sup>5</sup> .....	0.565	-0.4	-0.002	0.71	S-Feb.2012	-0.8
Admissions <sup>4</sup> .....	0.623	0.6	0.003	0.50	L-Jan.2012	2.1
Admission to movies, theaters, and concerts <sup>4, 5, 6</sup> .....		0.5		0.42	L-Jan.2012	1.9
Admission to sporting events <sup>4, 5, 6</sup> .....		0.8		0.52	L-Jan.2012	3.0
Fees for lessons or instructions <sup>4, 9</sup> .....	0.228	-0.1	0.000	0.23	S-Mar.2012	-0.1
Education and communication services <sup>12</sup> .....	6.099	0.2	0.014	0.07	-	-
Tuition, other school fees, and childcare .....	2.959	0.4	0.011	0.12	L-Dec.2011	0.4
College tuition and fees .....	1.659	0.4	0.006	0.21	L-Mar.2012	0.5
Elementary and high school tuition and fees .....	0.375	0.4	0.001	0.03	L-Feb.2012	0.4
Child care and nursery school <sup>13</sup> .....	0.765	0.4	0.003	0.11	L-Jan.2012	0.4
Technical and business school tuition and fees <sup>5</sup> ..	0.058	-0.1	0.000	0.18	-	-
Postage and delivery services <sup>5</sup> .....	0.148	-0.3	0.000	0.01	S-May 2010	-0.3
Postage <sup>4</sup> .....	0.138	-0.3	0.000	0.00	S-Jan.2012	-0.6
Delivery services <sup>4, 5</sup> .....	0.010	0.1	0.000	0.12	S-Mar.2012	-0.1
Telephone services <sup>4, 5</sup> .....	2.394	0.1	0.002	0.05	-	-
Wireless telephone services <sup>4, 5</sup> .....	1.456	0.1	0.001	0.06	L-Dec.2011	0.1
Land-line telephone services <sup>4, 12</sup> .....	0.938	0.1	0.001	0.09	S-Mar.2012	0.1
Internet services and electronic information providers <sup>4, 5</sup> .....	0.583	0.3	0.002	0.29	S-Mar.2012	0.3
Other personal services <sup>12</sup> .....	1.692	0.2	0.004	0.10	S-Mar.2012	0.2
Personal care services <sup>4</sup> .....	0.625	0.1	0.001	0.11	S-Jan.2012	-0.1
Haircuts and other personal care services <sup>4, 5</sup> .....	0.625	0.1	0.001	0.11	S-Jan.2012	-0.1
Miscellaneous personal services .....	1.067	0.3	0.004	0.13	L-Dec.2011	0.5
Legal services <sup>9</sup> .....	0.292	0.4	0.001	0.12	L-Nov.2011	0.4
Funeral expenses <sup>9</sup> .....	0.157	0.0	0.000	0.09	S-Mar.2012	-0.5
Laundry and dry cleaning services <sup>5</sup> .....	0.237	0.3	0.001	0.09	L-Nov.2010	0.3
Apparel services other than laundry and dry cleaning <sup>4, 5</sup> .....	0.029	0.1	0.000	0.19	L-Mar.2012	0.3
Financial services <sup>4, 9</sup> .....	0.211	0.6	0.001	0.62	S-Feb.2012	-0.9
Checking account and other bank services <sup>4, 5, 6</sup> .....		0.7		0.51	L-Feb.2012	2.0
Tax return preparation and other accounting fees <sup>5, 6</sup> .....		0.9		0.73	S-Feb.2012	0.5
<b>Special aggregate indexes</b>						
All items less food .....	85.849	-0.3	-0.288	0.03	S-Dec.2008	-0.9

See footnotes at end of table.

**Table 6. Consumer Price Index for All Urban Consumers (CPI-U): U.S. city average, by expenditure category, May 2012, 1-month analysis table — Continued**  
 [1982-84=100, unless otherwise noted]

Expenditure category	Relative importance Apr. 2012	One Month				
		Seasonally adjusted percent change Apr. 2012-May 2012	Seasonally adjusted effect on All Items Apr. 2012-May 2012 <sup>1</sup>	Standard error, median price change <sup>2</sup>	Largest (L) or Smallest (S) seasonally adjusted change since: <sup>3</sup>	
					Date	Percent change
All items less shelter.....	68.784	-0.5	-0.332	0.04	S-Dec.2008	-1.2
All items less food and shelter.....	54.633	-0.6	-0.336	0.05	S-Dec.2008	-1.5
All items less food, shelter, and energy.....	44.182	0.2	0.104	0.05	S-Feb.2012	0.1
All items less food, shelter, energy, and used cars and trucks.....	42.268	0.2	0.084	0.05	—	—
All items less medical care.....	92.958	-0.3	-0.311	0.03	S-Dec.2008	-0.9
All items less energy.....	89.549	0.2	0.157	0.03	—	—
Commodities.....	40.641	-0.9	-0.381	0.06	S-Dec.2008	-2.1
Commodities less food, energy, and used cars and trucks..	17.843	0.1	0.011	0.09	—	—
Commodities less food.....	26.490	-1.5	-0.386	0.07	S-Dec.2008	-3.3
Commodities less food and beverages.....	25.549	-1.5	-0.388	0.07	S-Dec.2008	-3.4
Services.....	59.359	0.2	0.093	0.04	—	—
Services less rent of shelter <sup>16</sup> .....	28.488	0.2	0.054	0.05	S-Mar.2012	0.2
Services less medical care services.....	54.029	0.2	0.084	0.04	—	—
Durables.....	8.877	0.1	0.006	0.07	S-Mar.2012	0.1
Nondurables.....	31.764	-1.2	-0.386	0.07	S-Dec.2008	-2.5
Nondurables less food.....	17.613	-2.2	-0.373	0.10	S-Dec.2008	-5.0
Nondurables less food and beverages.....	16.672	-2.3	-0.377	0.11	S-Dec.2008	-5.4
Nondurables less food, beverages, and apparel.....	13.036	-3.1	-0.394	0.07	S-Dec.2008	-7.0
Nondurables less food and apparel.....	13.977	-2.8	-0.387	0.07	S-Dec.2008	-6.3
Housing.....	40.506	0.0	0.001	0.05	S-Sep.2010	0.0
Education and communication <sup>5</sup> .....	6.694	0.3	0.018	0.08	L-Jan.2012	0.3
Education <sup>5</sup> .....	3.160	0.4	0.012	0.12	L-Nov.2011	0.4
Communication <sup>5</sup> .....	3.535	0.2	0.006	0.07	L-Feb.2012	0.2
Information and information processing <sup>5</sup> .....	3.387	0.2	0.006	0.08	L-Jan.2012	0.3
Information technology, hardware and services <sup>18</sup> .....	0.992	0.4	0.004	0.26	L-Feb.2010	0.8
Recreation <sup>5</sup> .....	5.989	0.1	0.005	0.15	L-Mar.2012	0.2
Video and audio <sup>5</sup> .....	1.919	0.3	0.005	0.19	L-Jan.2012	0.6
Pets, pet products and services <sup>5</sup> .....	1.091	0.0	0.000	0.26	—	—
Photography <sup>5</sup> .....	0.113	-0.9	-0.001	0.36	S-Apr.2007	-1.0
Food and beverages.....	15.092	0.0	0.006	0.08	S-Jul.2010	0.0
Domestically produced farm food <sup>4</sup> .....	7.203	0.0	0.002	0.14	S-Feb.2012	-0.1
Other services.....	11.475	0.2	0.025	0.08	—	—
Apparel less footwear.....	2.953	0.3	0.008	0.47	—	—
Fuels and utilities.....	5.229	-0.7	-0.037	0.13	S-May 2009	-1.3
Household energy.....	4.066	-1.0	-0.040	0.15	S-May 2009	-1.8
Medical care.....	7.042	0.4	0.028	0.06	L-Nov.2011	0.4
Transportation.....	17.702	-2.1	-0.357	0.06	S-Dec.2008	-4.9
Private transportation.....	16.507	-2.3	-0.367	0.06	S-Dec.2008	-5.1
New and used motor vehicles <sup>5</sup> .....	5.608	0.3	0.019	0.08	S-Feb.2012	0.2
Utilities and public transportation.....	9.857	0.1	0.014	0.09	S-Mar.2012	0.0
Household furnishings and operations.....	4.061	-0.3	-0.010	0.12	S-Sep.2010	-0.3

See footnotes at end of table.

**Table 6. Consumer Price Index for All Urban Consumers (CPI-U): U.S. city average, by expenditure category, May 2012, 1-month analysis table — Continued**  
 [1982-84=100, unless otherwise noted]

Expenditure category	Relative importance Apr. 2012	One Month				
		Seasonally adjusted percent change Apr. 2012-May 2012	Seasonally adjusted effect on All Items Apr. 2012-May 2012 <sup>1</sup>	Standard error, median price change <sup>2</sup>	Largest (L) or Smallest (S) seasonally adjusted change since: <sup>3</sup>	
					Date	Percent change
Other goods and services.....	3.340	0.0	0.001	0.11	S-Feb.2012	-0.1
Personal care.....	2.551	0.1	0.003	0.13	—	—

1 The 'effect' of an item category is a measure of that item's contribution to the All items price change. For example, if the Food index had an effect of 0.40, and the All items index rose 1.2 percent, then the increase in food prices contributed 0.40 / 1.2, or 33.3 percent, to that All items increase. Said another way, had food prices been unchanged for that month the change in the All items index would have been 1.2 percent minus 0.40, or 0.8 percent. Effects can be negative as well. For example, if the effect of food was a negative 0.1, and the All items index rose 0.5 percent, the All items index actually would have been 0.1 percent higher (or 0.6 percent) had food prices been unchanged. Since food prices fell while prices overall were rising, the contribution of food to the All items price change was negative (in this case, -0.1 / 0.5, or minus 20 percent).

2 A statistic's margin of error is often expressed as its point estimate plus or minus two standard errors. For example, if a CPI category rose 0.6 percent, and its standard error was 0.15 percent, the margin of error on this item's 1-month percent change would be 0.6 percent, plus or minus 0.3 percent.

3 If the current seasonally adjusted 1-month percent change is greater than the previous 1-month percent change, then this column identifies the closest prior month with a 1-month percent change as (L)arge as or (L)arger than the current 1-month change. If the current 1-month percent change is smaller than the previous 1-month percent change, the most recent month with a change as (S)maller or (S)maller than the current month change is identified. If the current and previous 1-month percent changes are equal, a dash will appear. Standard numerical comparisons are used. For example, 0.8% is greater than 0.6%, -0.4% is less than -0.2%, and -0.2% is less than 0.0%. Note that a (L)arger change can be a smaller decline, for example, a -0.2% change is larger than a -0.4% change, but still represents a decline in the price index. Likewise, (S)maller changes can be increases, for example, a 0.6% change is smaller than 0.8%, but still represents an increase in the price index. In this context, a -0.2% change is considered to be smaller than a 0.0% change.

4 Not seasonally adjusted.

5 Indexes on a December 1997=100 base.

6 Special indexes based on a substantially smaller sample. These series do not contribute to the all items index aggregation and therefore do not have a relative importance or effect.

7 Indexes on a December 2007=100 base.

8 Indexes on a December 2005=100 base.

9 Indexes on a December 1986=100 base.

10 Indexes on a December 1993=100 base.

11 This index series was calculated using a Laspeyres estimator. All other item stratum index series were calculated using a geometric means estimator.

12 Indexes on a December 2009=100 base.

13 Indexes on a December 1990=100 base.

14 Indexes on a December 1983=100 base.

15 Indexes on a December 2001=100 base.

16 Indexes on a December 1982=100 base.

17 Indexes on a December 1996=100 base.

18 Indexes on a December 1988=100 base.

NOTE: Index applies to a month as a whole, not to any specific date.

**Table 7. Consumer Price Index for All Urban Consumers (CPI-U): U.S. city average, by expenditure category, May 2012, 12-month analysis table**  
 [1982-84=100, unless otherwise noted]

Expenditure category	Relative importance Apr. 2012	Twelve Month				
		Unadjusted percent change May 2011-May 2012	Unadjusted effect on All Items May 2011-May 2012 <sup>1</sup>	Standard error, median price change <sup>2</sup>	Largest (L) or Smallest (S) unadjusted change since: <sup>3</sup>	
					Date	Percent change
All items.....	100.000	1.7		0.07	S-Jan.2011	1.6
Food.....	14.151	2.8	0.387	0.14	S-Feb.2011	2.3
Food at home.....	8.537	2.7	0.219	0.20	S-Jan.2011	2.1
Cereals and bakery products.....	1.228	3.7	0.041	0.43	S-May 2011	3.1
Cereals and cereal products.....	0.473	4.0	0.015	0.72	S-May 2011	3.5
Flour and prepared flour mixes.....	0.052	5.9	0.003	1.33	S-Apr.2011	3.4
Breakfast cereal.....	0.290	3.0	0.006	0.94	S-May 2011	2.8
Rice, pasta, cornmeal.....	0.131	5.0	0.006	1.08	S-Mar.2012	3.9
Rice <sup>4</sup> · <sup>5</sup> .....		2.4		1.67	S-Apr.2011	1.5
Bakery products.....	0.754	3.6	0.026	0.59	S-Jun.2011	3.6
Bread <sup>4</sup> .....	0.222	3.0	0.007	1.22	S-Mar.2011	2.7
White bread <sup>5</sup> .....		2.7		1.78	S-Feb.2011	2.6
Bread other than white <sup>5</sup> .....		3.0		1.73	S-Jan.2011	2.1
Fresh biscuits, rolls, muffins <sup>4</sup> .....	0.111	3.0	0.003	1.05	L-Mar.2012	3.9
Cakes, cupcakes, and cookies.....	0.184	5.7	0.011	1.06	S-Mar.2012	5.6
Cookies <sup>5</sup> .....		7.4		1.51	L-Mar.2009	8.8
Fresh cakes and cupcakes <sup>5</sup> .....		4.8		1.15	S-Jan.2012	3.5
Other bakery products.....	0.237	2.3	0.006	1.00	S-May 2011	2.3
Fresh sweetrolls, coffeecakes, doughnuts <sup>5</sup> .....		3.7		1.61	S-May 2011	2.7
Crackers, bread, and cracker products <sup>5</sup> .....		2.4		1.88	S-Apr.2011	0.1
Frozen and refrigerated bakery products, pies, tarts, turnovers <sup>5</sup> .....		1.7		1.52	S-May 2011	1.7
Meats, poultry, fish, and eggs.....	1.940	2.7	0.051	0.39	S-Jun.2010	2.0
Meats, poultry, and fish.....	1.832	2.9	0.051	0.41	S-Jun.2010	2.0
Meats.....	1.187	2.8	0.032	0.52	S-May 2010	2.1
Beef and veal.....	0.551	5.4	0.029	0.74	S-Aug.2010	5.0
Uncooked ground beef.....	0.215	5.9	0.013	1.14	S-Sep.2010	5.1
Uncooked beef roasts <sup>4</sup> .....	0.080	4.7	0.004	1.80	S-Nov.2010	3.4
Uncooked beef steaks <sup>4</sup> .....	0.205	5.6	0.011	1.12	S-Jun.2011	4.0
Uncooked other beef and veal <sup>4</sup> .....	0.051	3.8	0.002	1.47	L-Mar.2012	7.1
Pork.....	0.371	-0.3	-0.001	0.87	S-Mar.2010	-2.0
Bacon, breakfast sausage, and related products <sup>4</sup> .....						
Bacon and related products <sup>5</sup> .....	0.139	-1.1	-0.001	1.49	S-May 2010	-1.9
Breakfast sausage and related products <sup>4</sup> · <sup>5</sup> .....		-3.2		2.54	S-Jan.2010	-3.3
Lunchmeats <sup>4</sup> · <sup>5</sup> .....		4.0		1.68	L-Feb.2012	4.9
Ham.....	0.079	2.2	0.002	1.75	S-Feb.2012	1.4
Ham, excluding canned <sup>5</sup> .....		2.4		2.43	S-Feb.2012	1.8
Pork chops.....	0.061	1.0	0.001	1.66	S-Apr.2010	0.3
Other pork including roasts and picnics <sup>4</sup> .....	0.092	-2.4	-0.002	1.96	S-Jan.2010	-4.2
Other meats.....	0.265	2.2	0.005	1.30	S-Oct.2010	1.2
Frankfurters <sup>5</sup> .....		5.6		3.30	L-Mar.2012	6.5
Lunchmeats <sup>4</sup> · <sup>5</sup> .....		2.2		0.93	S-Dec.2010	1.6
Lamb and organ meats <sup>5</sup> .....		-1.2		3.30	S-Nov.2009	-1.3
Lamb and mutton <sup>4</sup> · <sup>5</sup> .....		-1.4		5.73	S-Feb.2010	-3.5
Poultry.....	0.339	3.9	0.013	0.93	S-Nov.2011	3.0
Chicken <sup>4</sup> .....	0.265	2.5	0.007	0.99	S-Nov.2011	1.2
Fresh whole chicken <sup>5</sup> .....		1.4		2.17	S-Apr.2011	1.3
Fresh and frozen chicken parts <sup>5</sup> .....		3.4		1.25	S-Feb.2012	3.4
Other poultry including turkey <sup>4</sup> .....	0.075	8.9	0.006	2.24	S-Oct.2011	7.3
Fish and seafood.....	0.305	1.9	0.006	1.03	S-Sep.2010	1.6
Fresh fish and seafood <sup>4</sup> .....	0.157	-0.4	-0.001	1.47	S-Mar.2010	-0.9
Processed fish and seafood <sup>4</sup> .....	0.148	4.5	0.006	1.17	S-Apr.2011	3.4
Shelf stable fish and seafood <sup>5</sup> .....		7.2		2.12	S-Mar.2012	3.6

See footnotes at end of table.

**Table 7. Consumer Price Index for All Urban Consumers (CPI-U): U.S. city average, by expenditure category, May 2012, 12-month analysis table — Continued**  
 [1982-84=100, unless otherwise noted]

Expenditure category	Relative importance Apr. 2012	Twelve Month				
		Unadjusted percent change May 2011- May 2012	Unadjusted effect on All Items May 2011- May 2012 <sup>1</sup>	Standard error, median price change <sup>2</sup>	Largest (L) or Smallest (S) unadjusted change since: <sup>3</sup>	
					Date	Percent change
Frozen fish and seafood <sup>5</sup> .....		3.7		2.12	S-Jan.2011	2.7
Eggs.....	0.108	1.4	0.000	1.18	S-Mar.2011	1.0
Dairy and related products.....	0.893	2.3	0.019	0.51	S-Jan.2011	1.7
Milk <sup>4</sup> .....	0.288	-0.4	-0.001	0.79	S-Feb.2010	-1.3
Fresh whole milk <sup>5</sup> .....		-1.1		1.28	S-Feb.2010	-2.5
Fresh milk other than whole <sup>4</sup> · <sup>5</sup> .....		0.2		1.16	S-Feb.2010	0.1
Cheese and related products.....	0.283	2.4	0.006	0.88	S-Mar.2011	1.9
Ice cream and related products.....	0.137	6.1	0.008	1.31	L-Mar.2012	6.4
Other dairy and related products <sup>4</sup> .....	0.184	3.7	0.006	0.93	S-Jul.2011	3.5
Fruits and vegetables.....	1.253	-0.4	-0.004	0.55	L-Jan.2012	-0.1
Fresh fruits and vegetables.....	0.950	-2.1	-0.020	0.69	L-Jan.2012	-1.7
Fresh fruits.....	0.500	2.6	0.013	1.01	L-Nov.2011	2.6
Apples.....	0.084	5.0	0.004	1.75	L-Jan.2012	6.1
Bananas.....	0.081	-1.0	-0.001	1.44	S-Oct.2010	-4.0
Citrus fruits <sup>4</sup> .....	0.105	3.5	0.004	2.25	L-Oct.2011	3.6
Oranges, including tangerines <sup>5</sup> .....		4.2		2.47	L-Nov.2011	4.2
Other fresh fruits <sup>4</sup> .....	0.230	2.5	0.006	1.56	—	—
Fresh vegetables.....	0.450	-6.9	-0.032	1.01	L-Jan.2012	-0.2
Potatoes.....	0.083	-4.7	-0.003	1.86	S-Jul.2010	-5.2
Lettuce.....	0.057	-10.2	-0.007	2.27	L-Jan.2012	-1.4
Tomatoes.....	0.075	-19.7	-0.017	2.40	L-Feb.2012	-18.0
Other fresh vegetables.....	0.235	-2.0	-0.005	1.33	L-Jan.2012	-1.3
Processed fruits and vegetables <sup>4</sup> .....	0.304	5.4	0.015	0.70	S-Jan.2012	5.4
Canned fruits and vegetables <sup>4</sup> .....	0.152	4.6	0.007	1.02	S-Mar.2012	4.6
Canned fruits <sup>4</sup> · <sup>5</sup> .....		3.2		1.19	S-Sep.2011	2.4
Canned vegetables <sup>4</sup> · <sup>5</sup> .....		5.9		1.43	S-Mar.2012	5.7
Frozen fruits and vegetables <sup>4</sup> .....	0.095	5.9	0.005	1.23	S-Sep.2011	5.1
Frozen vegetables <sup>5</sup> .....		6.1		1.25	L-Feb.2012	7.4
Other processed fruits and vegetables including dried <sup>4</sup> .....	0.057	6.9	0.004	1.36	S-Mar.2012	5.9
Dried beans, peas, and lentils <sup>4</sup> · <sup>5</sup> .....		14.3		2.74	S-Jan.2012	14.3
Nonalcoholic beverages and beverage materials.....	0.947	1.2	0.011	0.68	S-Feb.2011	0.6
Juices and nonalcoholic drinks <sup>4</sup> .....	0.706	1.3	0.009	0.84	—	—
Carbonated drinks.....	0.288	1.7	0.005	1.14	S-Apr.2011	0.9
Frozen noncarbonated juices and drinks <sup>4</sup> .....	0.014	8.5	0.001	2.34	S-Jun.2011	5.1
Nonfrozen noncarbonated juices and drinks <sup>4</sup> .....	0.404	0.8	0.003	1.05	L-Mar.2012	1.5
Beverage materials including coffee and tea <sup>4</sup> .....	0.241	1.0	0.002	0.99	S-Dec.2010	0.8
Coffee.....	0.147	2.7	0.003	1.45	S-Dec.2010	2.5
Roasted coffee <sup>5</sup> .....		2.4		1.78	S-Sep.2010	1.7
Instant and freeze dried coffee <sup>5</sup> .....		4.1		2.00	L-Feb.2012	5.9
Other beverage materials including tea <sup>4</sup> .....	0.094	-1.0	-0.001	1.25	S-Oct.2010	-1.3
Other food at home.....	2.276	4.8	0.101	0.41	S-Sep.2011	4.7
Sugar and sweets.....	0.308	4.6	0.014	0.99	S-Mar.2012	4.6
Sugar and artificial sweeteners.....	0.060	3.7	0.002	0.92	S-Apr.2011	3.0
Candy and chewing gum <sup>4</sup> .....	0.184	4.7	0.008	1.53	S-Feb.2012	4.3
Other sweets <sup>4</sup> .....	0.063	4.9	0.003	1.05	L-Feb.2012	5.3
Fats and oils.....	0.262	7.8	0.019	0.82	S-Feb.2011	4.8
Butter and margarine <sup>4</sup> .....	0.074	-0.9	-0.001	1.41	S-Mar.2010	-4.2
Butter <sup>5</sup> .....		-9.9		2.47	S-Dec.2009	-11.5
Margarine <sup>5</sup> .....		9.0		1.86	S-Feb.2011	6.1
Salad dressing <sup>4</sup> .....	0.066	5.0	0.003	1.32	L-Feb.2012	7.0
Other fats and oils including peanut butter <sup>4</sup> .....	0.122	15.5	0.017	1.22	S-Nov.2011	13.5
Peanut butter <sup>4</sup> · <sup>5</sup> .....		39.0		1.63	S-Feb.2012	37.9
Other foods.....	1.706	4.3	0.069	0.49	L-Mar.2012	4.5

See footnotes at end of table.



**Table 7. Consumer Price Index for All Urban Consumers (CPI-U): U.S. city average, by expenditure category, May 2012, 12-month analysis table — Continued**  
 [1982-84=100, unless otherwise noted]

Expenditure category	Relative importance Apr. 2012	Twelve Month				
		Unadjusted percent change May 2011-May 2012	Unadjusted effect on All Items May 2011-May 2012 <sup>1</sup>	Standard error, median price change <sup>2</sup>	Largest (L) or Smallest (S) unadjusted change since: <sup>3</sup>	
					Date	Percent change
Soups.....	0.100	4.5	0.005	1.59	S-Feb.2012	3.5
Frozen and freeze dried prepared foods.....	0.302	2.1	0.006	1.11	S-Aug.2011	1.4
Snacks.....	0.321	7.2	0.022	0.93	L-Mar.2012	8.0
Spices, seasonings, condiments, sauces.....	0.288	2.0	0.006	1.04	S-Sep.2011	1.9
Salt and other seasonings and spices <sup>4, 5</sup> .....		9.1		1.99	S-Mar.2012	7.6
Olives, pickles, relishes <sup>4, 5</sup> .....		-1.5		1.64	S-Feb.2011	-1.6
Sauces and gravies <sup>4, 5</sup> .....		-0.4		1.83	S-Dec.2010	-0.6
Other condiments <sup>5</sup> .....		3.6		1.66	S-May 2011	3.1
Baby food <sup>4</sup> .....	0.071	5.5	0.004	0.94	L-Mar.2012	6.1
Other miscellaneous foods <sup>4</sup> .....	0.624	4.8	0.025	0.80	L-Jan.2009	7.7
Prepared salads <sup>6, 5</sup> .....		4.2		1.42	L-Oct.2011	5.0
Food away from home.....	5.614	2.9	0.168	0.17	—	—
Full service meals and snacks <sup>4</sup> .....	2.664	2.6	0.072	0.21	—	—
Limited service meals and snacks <sup>4</sup> .....	2.257	3.3	0.075	0.30	L-Mar.2012	3.3
Food at employee sites and schools <sup>4</sup> .....	0.256	3.9	0.010	0.54	L-Sep.2011	4.0
Food at elementary and secondary schools <sup>7, 5</sup> .....		3.4		0.73	—	—
Food from vending machines and mobile vendors <sup>4</sup> .....	0.081	4.0	0.004	0.88	L-Mar.2012	4.0
Other food away from home <sup>4</sup> .....	0.357	2.0	0.007	0.45	—	—
Energy.....	10.451	-3.9	-0.385	0.19	S-Oct.2009	-14.0
Energy commodities.....	6.733	-3.7	-0.249	0.18	S-Oct.2009	-18.7
Fuel oil and other fuels.....	0.348	-1.8	-0.006	0.92	S-Nov.2009	-7.7
Fuel oil.....	0.238	-1.1	-0.003	1.14	S-Nov.2009	-6.9
Propane, kerosene, and firewood <sup>6</sup> .....	0.110	-3.0	-0.003	1.24	S-Dec.2009	-4.2
Motor fuel.....	6.385	-3.8	-0.243	0.19	S-Oct.2009	-18.4
Gasoline (all types).....	6.186	-4.0	-0.236	0.19	S-Oct.2009	-17.9
Gasoline, unleaded regular <sup>5</sup> .....		-4.1		0.48	S-Oct.2009	-18.3
Gasoline, unleaded midgrade <sup>9, 5</sup> .....		-3.8		0.45	S-Oct.2009	-17.2
Gasoline, unleaded premium <sup>5</sup> .....		-3.2		0.45	S-Oct.2009	-16.8
Other motor fuels <sup>4</sup> .....	0.199	-1.8	-0.007	0.33	S-Nov.2009	-6.0
Energy services <sup>10</sup> .....	3.718	-3.6	-0.136	0.32	S-Feb.2010	-4.2
Electricity <sup>10</sup> .....	2.853	0.2	0.007	0.37	S-Mar.2010	-0.5
Utility (piped) gas service <sup>10</sup> .....	0.865	-14.9	-0.143	0.62	S-Dec.2009	-18.1
All items less food and energy.....	75.398	2.3	1.703	0.09	—	—
Commodities less food and energy commodities.....	19.757	1.6	0.323	0.20	S-Jun.2011	1.6
Household furnishings and supplies <sup>11</sup> .....	3.337	0.3	0.010	0.35	S-Sep.2011	0.2
Window and floor coverings and other linens <sup>4</sup> .....	0.275	-4.0	-0.012	1.43	S-Apr.2011	-4.0
Floor coverings <sup>4</sup> .....	0.039	-0.2	0.000	1.43	S-May 2011	-0.4
Window coverings <sup>4</sup> .....	0.076	0.1	0.000	2.32	—	—
Other linens <sup>4</sup> .....	0.160	-6.9	-0.012	1.74	S-Jan.2011	-8.2
Furniture and bedding.....	0.716	1.4	0.011	0.91	S-Nov.2011	1.1
Bedroom furniture.....	0.233	0.7	0.002	1.64	L-Mar.2012	1.4
Living room, kitchen, and dining room furniture <sup>4</sup> .....	0.341	3.6	0.013	1.20	—	—
Other furniture <sup>4</sup> .....	0.134	-2.7	-0.004	2.17	S-Oct.2011	-3.1
Infants' furniture <sup>7, 5</sup> .....						
Appliances <sup>4</sup> .....	0.289	3.0	0.009	0.76	S-Dec.2011	1.5
Major appliances <sup>4</sup> .....	0.167	6.9	0.011	1.10	S-Jan.2012	5.9
Laundry equipment <sup>5</sup> .....		9.0		1.75	S-Jan.2012	8.2
Other appliances <sup>4</sup> .....	0.119	-2.2	-0.002	1.22	S-Feb.2011	-2.2
Other household equipment and furnishings <sup>4</sup> .....	0.491	-5.0	-0.027	1.21	S-Jul.2010	-5.5
Clocks, lamps, and decorator items.....	0.258	-6.4	-0.018	1.82	L-Nov.2011	-6.4
Indoor plants and flowers <sup>12</sup> .....	0.101	-1.9	-0.002	1.49	S-Jan.2010	-2.4
Dishes and flatware <sup>4</sup> .....	0.047	-11.2	-0.007	2.54	S-EVER	—
Nonelectric cookware and tableware <sup>4</sup> .....	0.084	0.0	0.000	1.31	S-Mar.2012	-0.6

See footnotes at end of table.

**Table 7. Consumer Price Index for All Urban Consumers (CPI-U): U.S. city average, by expenditure category, May 2012, 12-month analysis table — Continued**  
 [1982-84=100, unless otherwise noted]

Expenditure category	Relative importance Apr. 2012	Twelve Month				
		Unadjusted percent change May 2011-May 2012	Unadjusted effect on All Items May 2011-May 2012 <sup>1</sup>	Standard error, median price change <sup>2</sup>	Largest (L) or Smallest (S) unadjusted change since: <sup>3</sup>	
					Date	Percent change
Tools, hardware, outdoor equipment and supplies <sup>4</sup> . . .	0.681	0.4	0.002	0.60	L-Feb.2012	1.4
Tools, hardware and supplies <sup>4</sup> . . . . .	0.172	2.0	0.004	1.02	S-Jun.2011	1.1
Outdoor equipment and supplies <sup>4</sup> . . . . .	0.363	-0.3	-0.002	0.77	L-Feb.2012	0.8
Housekeeping supplies. . . . .	0.886	3.1	0.027	0.51	S-Nov.2011	2.7
Household cleaning products <sup>4</sup> . . . . .	0.358	2.2	0.007	0.81	S-Sep.2011	1.9
Household paper products <sup>4</sup> . . . . .	0.240	4.3	0.010	0.92	—	—
Miscellaneous household products <sup>4</sup> . . . . .	0.287	3.3	0.010	1.02	S-Nov.2011	2.0
Apparel. . . . .	3.636	4.4	0.157	0.95	S-Feb.2012	4.2
Men's and boys' apparel. . . . .	0.876	5.5	0.047	1.06	S-Feb.2012	4.9
Men's apparel. . . . .	0.690	4.9	0.034	1.19	S-Oct.2011	4.4
Men's suits, sport coats, and outerwear. . . . .	0.125	2.4	0.003	3.03	S-Dec.2011	0.0
Men's furnishings. . . . .	0.180	7.7	0.014	2.44	L-Jan.2012	7.7
Men's shirts and sweaters <sup>4</sup> . . . . .	0.217	3.2	0.007	2.52	S-Sep.2011	2.3
Men's pants and shorts. . . . .	0.161	6.9	0.009	2.41	L-Aug.2011	7.3
Boys' apparel. . . . .	0.185	7.6	0.013	2.92	S-Feb.2012	3.0
Women's and girls' apparel. . . . .	1.558	5.6	0.084	1.86	S-Mar.2012	5.5
Women's apparel. . . . .	1.305	5.2	0.065	2.10	S-Mar.2012	4.9
Women's outerwear. . . . .	0.089	2.3	0.008	9.10	S-May 2011	0.1
Women's dresses. . . . .	0.184	2.9	0.008	6.62	S-Jan.2012	-0.3
Women's suits and separates <sup>4</sup> . . . . .	0.622	5.9	0.033	2.06	L-Feb.2007	8.9
Women's underwear, nightwear, sportswear and accessories <sup>4</sup> . . . . .	0.395	4.0	0.015	3.96	S-Sep.2011	2.7
Girls' apparel. . . . .	0.252	7.9	0.019	4.48	L-Mar.2012	8.9
Footwear. . . . .	0.683	2.2	0.015	1.07	S-Mar.2012	1.2
Men's footwear. . . . .	0.209	3.9	0.008	1.63	L-Aug.2009	3.9
Boys' and girls' footwear. . . . .	0.150	1.1	0.002	2.62	S-Mar.2012	-0.3
Women's footwear. . . . .	0.324	1.4	0.005	1.73	S-Feb.2012	0.2
Infants' and toddlers' apparel. . . . .	0.199	7.0	0.013	2.01	L-Mar.2012	7.5
Jewelry and watches <sup>8</sup> . . . . .	0.321	-0.2	-0.001	2.42	S-Feb.2010	-0.4
Watches <sup>8</sup> . . . . .	0.089	0.3	0.001	1.57	S-Jan.2012	0.1
Jewelry <sup>8</sup> . . . . .	0.232	-0.7	-0.001	2.79	S-Aug.2009	-0.8
Transportation commodities less motor fuel <sup>11</sup> . . . . .	5.583	2.2	0.126	0.19	S-Mar.2011	2.0
New vehicles. . . . .	3.168	1.3	0.044	0.30	S-Feb.2011	0.9
New cars and trucks <sup>4</sup> . <sup>5</sup> . . . . .		1.3		0.30	S-Feb.2011	1.0
New cars <sup>5</sup> . . . . .		1.2		0.40	S-Mar.2011	1.2
New trucks <sup>13</sup> . <sup>5</sup> . . . . .		1.4		0.30	S-Jan.2011	1.3
Used cars and trucks. . . . .	1.914	3.5	0.067	0.22	—	—
Motor vehicle parts and equipment. . . . .	0.432	3.6	0.015	0.44	S-Dec.2010	3.3
Tires. . . . .	0.294	4.0	0.011	0.63	S-Nov.2010	4.0
Vehicle accessories other than tires <sup>4</sup> . . . . .	0.138	3.0	0.004	0.68	S-Apr.2011	2.6
Vehicle parts and equipment other than tires <sup>5</sup> . . . . .		1.5		0.63	S-Apr.2011	1.5
Motor oil, coolant, and fluids <sup>5</sup> . . . . .		10.2		1.76	S-Jun.2011	7.7
Medical care commodities. . . . .	1.713	2.7	0.045	0.40	—	—
Medicinal drugs <sup>11</sup> . . . . .	1.635	2.7	0.043	0.41	S-EVER	—
Prescription drugs. . . . .	1.325	3.3	0.042	0.44	S-Apr.2009	2.4
Nonprescription drugs <sup>11</sup> . . . . .	0.310	0.3	0.001	0.88	L-EVER	—
Medical equipment and supplies <sup>11</sup> . . . . .	0.078	2.2	0.002	0.82	L-Jun.2011	2.4
Recreation commodities <sup>11</sup> . . . . .	2.305	-1.7	-0.041	0.39	S-Jun.2011	-1.7
Video and audio products <sup>11</sup> . . . . .	0.420	-9.5	-0.041	0.60	L-Mar.2012	-9.3
Televisions. . . . .	0.165	-17.7	-0.029	1.34	L-Feb.2012	-17.5
Other video equipment <sup>4</sup> . . . . .	0.027	-12.1	-0.003	1.56	L-Mar.2012	-11.4
Audio equipment. . . . .	0.072	-8.7	-0.007	1.07	S-Dec.2005	-8.8
Audio discs, tapes and other media <sup>4</sup> . . . . .	0.044	-4.3	-0.002	1.35	S-Nov.2010	-5.3
Pets and pet products. . . . .	0.686	2.5	0.017	0.79	—	—

See footnotes at end of table.

**Table 7. Consumer Price Index for All Urban Consumers (CPI-U): U.S. city average, by expenditure category, May 2012, 12-month analysis table — Continued**

[1982-84=100, unless otherwise noted]

Expenditure category	Relative importance Apr. 2012	Twelve Month				
		Unadjusted percent change May 2011- May 2012	Unadjusted effect on All Items May 2011- May 2012 <sup>1</sup>	Standard error, median price change <sup>2</sup>	Largest (L) or Smallest (S) unadjusted change since: <sup>3</sup>	
					Date	Percent change
Pet food <sup>4</sup> · <sup>5</sup> .....		3.5		0.92	L-Jan.2012	3.9
Purchase of pets, pet supplies, accessories <sup>4</sup> · <sup>5</sup> .....		0.3		1.71	S-Feb.2012	-0.5
Sporting goods.....	0.460	-0.3	-0.003	0.84	S-Mar.2012	-0.3
Sports vehicles including bicycles.....	0.239	0.2	0.001	0.89	S-May 2010	-1.0
Sports equipment.....	0.211	-1.1	-0.004	1.45	S-Mar.2012	-3.1
Photographic equipment and supplies.....	0.054	-5.3	-0.003	1.54	S-Mar.2011	-7.9
Film and photographic supplies <sup>4</sup> · <sup>5</sup> .....		8.4		2.11	S-Mar.2012	8.3
Photographic equipment <sup>4</sup> · <sup>5</sup> .....		-7.8		2.64	S-Mar.2011	-10.0
Recreational reading materials.....	0.222	2.2	0.005	1.14	L-Jan.2010	2.2
Newspapers and magazines <sup>4</sup> .....	0.120	5.1	0.006	0.90	L-Nov.2009	5.9
Recreational books <sup>4</sup> .....	0.098	-1.3	-0.001	2.06	L-Feb.2011	0.6
Other recreational goods <sup>4</sup> .....	0.464	-3.8	-0.017	1.11	S-Apr.2011	-4.3
Toys.....	0.345	-5.4	-0.018	1.36	S-Apr.2011	-5.5
Toys, games, hobbies and playground equipment <sup>4</sup> .....		-2.1		1.11	S-Oct.2011	-2.7
Sewing machines, fabric and supplies <sup>4</sup> .....	0.061	2.8	0.002	1.76	S-Mar.2012	1.8
Music instruments and accessories <sup>4</sup> .....	0.039	-0.3	0.000	1.08	L-Sep.2010	0.0
Education and communication commodities <sup>11</sup> .....	0.595	-3.2	-0.017	0.84	L-May 2011	-2.8
Educational books and supplies.....	0.200	5.8	0.011	1.03	L-Nov.2011	6.2
College textbooks <sup>14</sup> · <sup>5</sup> .....		6.4		1.03	L-Nov.2011	6.6
Information technology commodities <sup>11</sup> .....	0.395	-8.5	-0.028	1.09	L-Jul.2011	-7.8
Personal computers and peripheral equipment <sup>6</sup> .....	0.260	-10.6	-0.024	1.28	L-Jul.2011	-9.4
Computer software and accessories <sup>4</sup> .....	0.048	-2.4	-0.001	2.07	L-Jan.2012	-2.0
Telephone hardware, calculators, and other consumer information items <sup>4</sup> .....	0.087	-5.1	-0.003	2.89	L-Mar.2012	-4.4
Alcoholic beverages.....	0.941	1.7	0.016	0.45	S-Dec.2011	1.4
Alcoholic beverages at home.....	0.567	0.9	0.005	0.43	L-Mar.2012	0.9
Beer, ale, and other malt beverages at home.....	0.270	2.1	0.006	0.60	L-Mar.2012	2.5
Distilled spirits at home.....	0.071	-0.5	0.000	0.67	S-Mar.2011	-0.7
Whiskey at home <sup>5</sup> .....		1.3		0.93	—	—
Distilled spirits, excluding whiskey, at home <sup>5</sup> .....		-0.4		1.00	S-Feb.2012	-1.1
Wine at home.....	0.226	-0.4	-0.001	0.79	L-Jun.2011	-0.2
Alcoholic beverages away from home.....	0.374	2.8	0.011	1.04	S-Nov.2011	2.8
Beer, ale, and other malt beverages away from home <sup>4</sup> · <sup>5</sup> .....		1.2		0.68	S-EVER	—
Wine away from home <sup>4</sup> · <sup>5</sup> .....		2.9		0.98	S-Mar.2012	2.7
Distilled spirits away from home <sup>4</sup> · <sup>5</sup> .....		3.3		1.83	S-Apr.2011	1.8
Other goods <sup>11</sup> .....	1.647	1.5	0.027	0.47	—	—
Tobacco and smoking products.....	0.789	2.4	0.021	0.67	—	—
Cigarettes <sup>4</sup> .....	0.729	2.3	0.019	0.71	—	—
Tobacco products other than cigarettes <sup>4</sup> .....	0.053	3.4	0.002	1.05	S-Apr.2011	2.8
Personal care products.....	0.652	1.3	0.008	0.71	L-Oct.2009	1.5
Hair, dental, shaving, and miscellaneous personal care products <sup>4</sup> .....	0.342	0.6	0.002	1.12	S-Feb.2012	-1.4
Cosmetics, perfume, bath, nail preparations and implements.....	0.304	1.9	0.006	0.90	L-Jan.2012	2.2
Miscellaneous personal goods <sup>4</sup> .....	0.206	-1.3	-0.003	1.02	S-Aug.2011	-1.8
Stationery, stationery supplies, gift wrap <sup>5</sup> .....		-0.1		1.16	S-Aug.2011	-0.6
Infants' equipment <sup>7</sup> · <sup>5</sup> .....		-3.9		1.18	S-EVER	—
Services less energy services.....	55.641	2.5	1.380	0.10	L-Feb.2009	2.5
Shelter.....	31.216	2.3	0.708	0.13	L-Sep.2008	2.4
Rent of shelter <sup>15</sup> .....	30.871	2.3	0.697	0.14	L-Sep.2008	2.4
Rent of primary residence <sup>10</sup> .....	6.403	2.7	0.161	0.18	—	—
Lodging away from home <sup>4</sup> .....	0.810	4.1	0.031	1.03	L-Jul.2011	4.7
Housing at school, excluding board <sup>10</sup> · <sup>15</sup> .....	0.152	3.9	0.006	0.32	L-Dec.2011	3.9

See footnotes at end of table.

**Table 7. Consumer Price Index for All Urban Consumers (CPI-U): U.S. city average, by expenditure category, May 2012, 12-month analysis table — Continued**  
 [1982-84=100, unless otherwise noted]

Expenditure category	Relative importance Apr. 2012	Twelve Month				
		Unadjusted percent change May 2011- May 2012	Unadjusted effect on All Items May 2011- May 2012 <sup>1</sup>	Standard error, median price change <sup>2</sup>	Largest (L) or Smallest (S) unadjusted change since: <sup>3</sup>	
					Date	Percent change
Other lodging away from home including hotels and motels.....	0.658	4.0	0.025	1.27	L-Feb.2012	4.0
Owners' equivalent rent of residences <sup>10, 15</sup> .....	23.657	2.1	0.504	0.15	—	—
Owners' equivalent rent of primary residence <sup>10, 15</sup> .....	22.261	2.1	0.472	0.15	—	—
Tenants' and household insurance <sup>4</sup> .....	0.346	3.4	0.012	0.94	—	—
Water and sewer and trash collection services <sup>4</sup> .....	1.163	5.2	0.058	0.48	S-Mar.2012	4.8
Water and sewerage maintenance <sup>10</sup> .....	0.877	6.4	0.054	0.63	—	—
Garbage and trash collection <sup>13</sup> .....	0.286	1.4	0.004	0.48	S-May 1996	1.0
Household operations <sup>4</sup> .....	0.724	2.1	0.015	0.42	S-Feb.2012	1.9
Domestic services <sup>4</sup> .....	0.248	1.2	0.003	0.53	S-Mar.2012	1.2
Gardening and lawncare services <sup>4</sup> .....	0.236	1.7	0.004	0.42	S-Dec.2011	1.5
Moving, storage, freight expense <sup>4</sup> .....	0.090	3.4	0.003	2.54	L-Mar.2012	4.5
Repair of household items <sup>4</sup> .....	0.076		0.004	1.03	—	—
Medical care services.....	5.330	3.9	0.197	0.23	L-Aug.2008	3.9
Professional services.....	2.964	1.8	0.051	0.24	L-Jan.2012	2.0
Physicians' services <sup>10</sup> .....	1.586	1.6	0.025	0.39	L-Jan.2012	2.4
Dental services <sup>10</sup> .....	0.754	1.9	0.014	0.38	S-Mar.1962	1.9
Eyeglasses and eye care <sup>8</sup> .....	0.250	3.3	0.008	0.69	L-Sep.2009	3.4
Services by other medical professionals <sup>10, 8</sup> .....	0.374	1.1	0.004	0.34	L-Mar.2012	1.1
Hospital and related services.....	1.735	4.7	0.080	0.43	S-Sep.2005	4.6
Hospital services <sup>10, 16</sup> .....	1.514	5.1	0.074	0.50	S-Oct.2005	5.0
Inpatient hospital services <sup>10, 16, 5</sup> .....		5.1		1.10	S-Mar.2007	5.1
Outpatient hospital services <sup>10, 8, 5</sup> .....		4.8		0.81	—	—
Nursing homes and adult day services <sup>10, 16</sup> .....	0.136	3.8	0.005	0.34	L-Nov.2009	4.1
Care of invalids and elderly at home <sup>7</sup> .....	0.085	0.9	0.001	0.62	S-Feb.2010	0.4
Health insurance <sup>7</sup> .....	0.631	13.0	0.067	0.24	L-EVER	—
Transportation services.....	5.734	1.9	0.111	0.34	L-Jan.2012	2.1
Leased cars and trucks <sup>14</sup> .....	0.388	-6.0	-0.030	1.06	S-Aug.2010	-6.4
Car and truck rental <sup>4</sup> .....	0.069	1.4	0.002	2.53	L-Jul.2011	1.7
Motor vehicle maintenance and repair.....	1.137	2.0	0.023	0.32	—	—
Motor vehicle body work.....	0.057	1.8	0.001	0.61	—	—
Motor vehicle maintenance and servicing.....	0.454	2.6	0.012	0.46	L-Oct.2009	3.0
Motor vehicle repair <sup>4</sup> .....	0.591	1.5	0.009	0.47	S-EVER	—
Motor vehicle insurance.....	2.388	3.0	0.074	0.69	L-Jan.2012	3.1
Motor vehicle fees <sup>4</sup> .....	0.557	2.9	0.015	0.40	—	—
State motor vehicle registration and license fees <sup>10, 4</sup> .....	0.324	0.5	0.002	0.59	S-Aug.2011	0.3
Parking and other fees <sup>4</sup> .....	0.210	6.8	0.013	0.37	L-Nov.2009	7.2
Parking fees and tolls <sup>4, 5</sup> .....		8.9		0.65	L-Sep.2009	9.0
Automobile service clubs <sup>4, 5</sup> .....		2.8		0.62	L-Jan.2008	2.9
Public transportation.....	1.195	2.4	0.028	0.74	L-Dec.2011	3.8
Airline fare.....	0.788	3.2	0.023	1.04	L-Dec.2011	4.5
Other intercity transportation.....	0.148	-0.8	-0.001	1.41	L-Dec.2011	-0.5
Intercity bus fare <sup>6, 5</sup> .....				0.72	—	—
Intercity train fare <sup>6, 5</sup> .....		-0.7		2.70	L-Jun.2011	4.6
Ship fare <sup>4, 5</sup> .....		-1.7		1.72	L-Jan.2012	-1.5
Intracity transportation.....	0.257	2.2	0.006	0.48	S-Jan.2012	2.0
Intracity mass transit <sup>11, 5</sup> .....		1.5		1.48	S-EVER	—
Recreation services <sup>11</sup> .....	3.683	2.6	0.096	0.50	S-Feb.2012	2.6
Video and audio services <sup>11</sup> .....	1.499	4.5	0.066	0.78	L-Jan.2012	4.5
Cable and satellite television and radio service <sup>13</sup> ..	1.387	4.5	0.060	0.83	L-Jul.2006	5.9
Video discs and other media, including rental of video and audio <sup>4</sup> .....	0.112	4.1	0.005	3.13	S-Mar.2012	3.4

See footnotes at end of table.

**Table 7. Consumer Price Index for All Urban Consumers (CPI-U): U.S. city average, by expenditure category, May 2012, 12-month analysis table — Continued**  
 [1982-84=100, unless otherwise noted]

Expenditure category	Relative importance Apr. 2012	Twelve Month				
		Unadjusted percent change May 2011- May 2012	Unadjusted effect on All Items May 2011- May 2012 <sup>1</sup>	Standard error, median price change <sup>2</sup>	Largest (L) or Smallest (S) unadjusted change since: <sup>3</sup>	
					Date	Percent change
Video discs and other media <sup>4, 5</sup> .....		-4.4		3.14	S-Mar.2012	-6.9
Rental of video or audio discs and other media <sup>4, 5</sup> .....		12.0		4.48	S-Aug.2011	9.9
Pet services including veterinary <sup>4</sup> .....	0.405	3.0	0.012	1.14	S-May 2010	3.0
Pet services <sup>4, 5</sup> .....		2.4		1.05	—	—
Veterinarian services <sup>4, 5</sup> .....		2.8		1.50	S-Mar.2012	2.8
Photographers and film processing <sup>4</sup> .....	0.058	1.5	0.002	1.20	S-Dec.2010	1.5
Photographer fees <sup>4, 5</sup> .....		1.1		1.73	S-Mar.2011	0.1
Film processing <sup>4, 5</sup> .....		1.3		1.08	S-Aug.2010	1.3
Other recreation services <sup>4</sup> .....	1.719	0.9	0.016	0.79	S-Dec.2011	0.7
Club dues and fees for participant sports and group exercises <sup>4</sup> .....	0.565	1.7	0.010	1.56	S-Nov.2011	-0.3
Admissions .....	0.623	0.6	0.004	1.05	S-Mar.2012	0.5
Admission to movies, theaters, and concerts <sup>4, 5</sup> .....		0.3		1.24	S-Mar.2012	0.3
Admission to sporting events <sup>4, 5</sup> .....		2.4		1.31	L-Jul.2010	3.2
Fees for lessons or instructions <sup>8</sup> .....	0.228	0.5	0.001	0.94	—	—
Education and communication services <sup>11</sup> .....	6.099	2.7	0.156	0.26	L-EVER	—
Tuition, other school fees, and childcare .....	2.959	4.2	0.120	0.44	—	—
College tuition and fees .....	1.659	5.3	0.079	0.77	S-Aug.2011	5.3
Elementary and high school tuition and fees .....	0.375	3.7	0.015	0.51	L-Feb.2012	3.8
Child care and nursery school <sup>12</sup> .....	0.765	2.4	0.019	0.35	—	—
Technical and business school tuition and fees <sup>4</sup> ...	0.058	5.2	0.002	0.81	L-Mar.2012	6.4
Postage and delivery services <sup>4</sup> .....	0.148	3.8	0.006	0.29	S-Jan.2012	1.3
Postage .....	0.138	3.8	0.005	0.30	—	—
Delivery services <sup>4</sup> .....	0.010	4.5	0.000	0.43	S-Dec.2009	1.6
Telephone services <sup>4</sup> .....	2.394	0.8	0.019	0.33	L-Jan.2010	0.8
Wireless telephone services <sup>4</sup> .....	1.456	-0.6	-0.006	0.50	L-Oct.2009	0.2
Land-line telephone services <sup>11</sup> .....	0.938	2.5	0.025	0.36	L-EVER	—
Internet services and electronic information providers <sup>4</sup> .....	0.583	2.1	0.012	0.77	L-Oct.2009	2.5
Other personal services <sup>11</sup> .....	1.692	2.3	0.038	0.40	L-Dec.2011	2.4
Personal care services .....	0.625	1.5	0.009	0.47	—	—
Haircuts and other personal care services <sup>4</sup> .....	0.625	1.5	0.009	0.47	—	—
Miscellaneous personal services .....	1.067	2.7	0.029	0.46	L-Mar.2012	2.7
Legal services <sup>8</sup> .....	0.292	2.2	0.007	1.07	L-Dec.2011	2.7
Funeral expenses <sup>8</sup> .....	0.157	1.7	0.003	0.45	S-EVER	—
Laundry and dry cleaning services <sup>4</sup> .....	0.237	1.6	0.004	0.51	L-Mar.2012	1.6
Apparel services other than laundry and dry cleaning <sup>4</sup> .....	0.029	3.4	0.001	0.95	S-Apr.2011	2.4
Financial services <sup>8</sup> .....	0.211	5.7	0.011	1.11	L-Mar.2012	5.7
Checking account and other bank services <sup>4, 5</sup> .....		5.7		1.54	L-Mar.2012	8.9
Tax return preparation and other accounting fees <sup>4, 5</sup> .....		6.4		1.27	S-Mar.2012	5.8
<b>Special aggregate indexes</b>						
All items less food .....	85.849	1.5	1.317	0.08	S-Dec.2010	1.5
All items less shelter .....	68.784	1.4	0.996	0.08	S-Oct.2009	-0.6
All items less food and shelter .....	54.633	1.1	0.609	0.10	S-Oct.2009	-0.6
All items less food, shelter, and energy .....	44.182	2.2	0.994	0.11	S-Sep.2011	2.2
All items less food, shelter, energy, and used cars and trucks .....	42.268	2.2	0.927	0.12	S-Oct.2011	2.2
All items less medical care .....	92.958	1.6	1.462	0.08	S-Jan.2011	1.5
All items less energy .....	89.549	2.3	2.089	0.08	S-Aug.2011	2.3
Commodities .....	40.641	1.2	0.460	0.12	S-Oct.2009	-1.7

See footnotes at end of table.

**Table 7. Consumer Price Index for All Urban Consumers (CPI-U): U.S. city average, by expenditure category, May 2012, 12-month analysis table — Continued**  
 [1982-84=100, unless otherwise noted]

Expenditure category	Relative importance Apr. 2012	Twelve Month				
		Unadjusted percent change May 2011-May 2012	Unadjusted effect on All Items May 2011-May 2012 <sup>1</sup>	Standard error, median price change <sup>2</sup>	Largest (L) or Smallest (S) unadjusted change since: <sup>3</sup>	
					Date	Percent change
Commodities less food, energy, and used cars and trucks...	17.843	1.4	0.256	0.22	S-Jul.2011	1.4
Commodities less food.....	26.490	0.4	0.074	0.17	S-Oct.2009	-2.3
Commodities less food and beverages.....	25.549	0.3	0.058	0.18	S-Oct.2009	-2.5
Services.....	59.359	2.1	1.244	0.10	—	—
Services less rent of shelter <sup>15</sup> .....	28.488	1.9	0.547	0.13	S-Nov.2010	1.9
Services less medical care services.....	54.029	1.9	1.047	0.10	S-Mar.2012	1.9
Durables.....	8.877	0.6	0.051	0.18	S-Mar.2011	0.0
Nondurables.....	31.764	1.3	0.410	0.15	S-Jun.2010	1.3
Nondurables less food.....	17.613	0.2	0.023	0.26	S-Oct.2009	-4.3
Nondurables less food and beverages.....	16.672	0.1	0.007	0.27	S-Oct.2009	-4.8
Nondurables less food, beverages, and apparel.....	13.036	-1.1	-0.150	0.16	S-Oct.2009	-6.8
Nondurables less food and apparel.....	13.977	-0.9	-0.134	0.15	S-Oct.2009	-6.0
Housing.....	40.506	1.6	0.649	0.11	S-Aug.2011	1.6
Education and communication <sup>4</sup> .....	6.694	2.2	0.139	0.25	L-Jun.2010	2.2
Education <sup>4</sup> .....	3.160	4.3	0.131	0.41	—	—
Communication <sup>4</sup> .....	3.535	0.2	0.008	0.27	L-Nov.2009	0.2
Information and information processing <sup>4</sup> .....	3.387	0.0	0.003	0.28	L-Nov.2009	0.0
Information technology, hardware and services <sup>17</sup> .....	0.992	-2.4	-0.016	0.59	L-Dec.2010	-2.0
Recreation <sup>4</sup> .....	5.989	0.9	0.055	0.35	S-Nov.2011	0.3
Video and audio <sup>4</sup> .....	1.919	1.2	0.025	0.65	L-Mar.2012	1.2
Pets, pet products and services <sup>4</sup> .....	1.091	2.7	0.030	0.62	—	—
Photography <sup>4</sup> .....	0.113	-1.2	-0.002	0.94	S-Mar.2011	-1.4
Food and beverages.....	15.092	2.7	0.403	0.14	S-Feb.2011	2.2
Domestically produced farm food.....	7.203	3.0	0.203	0.21	S-Feb.2011	3.0
Other services.....	11.475	2.6	0.290	0.22	—	—
Apparel less footwear.....	2.953	5.0	0.142	1.12	S-Feb.2012	5.0
Fuels and utilities.....	5.229	-1.6	-0.085	0.27	S-Jan.2010	-1.8
Household energy.....	4.066	-3.4	-0.142	0.31	S-Jan.2010	-3.5
Medical care.....	7.042	3.6	0.242	0.18	L-Jan.2012	3.6
Transportation.....	17.702	0.2	-0.005	0.15	S-Oct.2009	-3.8
Private transportation.....	16.507	0.1	-0.033	0.15	S-Oct.2009	-3.8
New and used motor vehicles <sup>4</sup> .....	5.608	1.5	0.083	0.21	S-Mar.2011	1.3
Utilities and public transportation.....	9.857	0.3	0.029	0.23	S-Feb.2010	-0.3
Household furnishings and operations.....	4.061	0.6	0.025	0.29	S-Oct.2011	0.6

See footnotes at end of table.

**Table 7. Consumer Price Index for All Urban Consumers (CPI-U): U.S. city average, by expenditure category, May 2012, 12-month analysis table — Continued**

[1982-84=100, unless otherwise noted]

Expenditure category	Relative importance Apr. 2012	Twelve Month				
		Unadjusted percent change May 2011- May 2012	Unadjusted effect on All Items May 2011- May 2012 <sup>1</sup>	Standard error, median price change <sup>2</sup>	Largest (L) or Smallest (S) unadjusted change since: <sup>3</sup>	
					Date	Percent change
Other goods and services.....	3.340	1.9	0.065	0.33	L-Nov.2011	1.9
Personal care.....	2.551	1.7	0.043	0.35	L-Mar.2012	1.7

1 The 'effect' of an item category is a measure of that item's contribution to the All items price change. For example, if the Food index had an effect of 0.40, and the All items index rose 1.2 percent, then the increase in food prices contributed 0.40 / 1.2, or 33.3 percent, to that All items increase. Said another way, had food prices been unchanged for that year the change in the All items index would have been 1.2 percent minus 0.40, or 0.8 percent. Effects can be negative as well. For example, if the effect of food was a negative 0.1, and the All items index rose 0.5 percent, the All items index actually would have been 0.1 percent higher (or 0.6 percent) had food prices been unchanged. Since food prices fell while prices overall were rising, the contribution of food to the All items price change was negative (in this case, -0.1 / 0.5, or minus 20 percent).

2 A statistic's margin of error is often expressed as its point estimate plus or minus two standard errors. For example, if a CPI category rose 2.6 percent, and its standard error was 0.25 percent, the margin of error on this item's 12-month percent change would be 2.6 percent, plus or minus 0.5 percent.

3 If the current 12-month percent change is greater than the previous 12-month percent change, then this column identifies the closest prior month with a 12-month percent change as (L)arge as or (L)arger than the current 12-month change. If the current 12-month percent change is smaller than the previous 12-month percent change, the most recent month with a change as (S)maller or (S)maller than the current month change is identified. If the current and previous 12-month percent changes are equal, a dash will appear. Standard numerical comparison is used. For example, 2.0% is greater than 0.6%, -4.4% is less than -2.0%, and -2.0% is less than 0.0%. Note that a (L)arger change can be a smaller decline, for example, a -0.2% change is larger than a -0.4% change, but still represents a decline in the price index. Likewise, (S)maller changes can be increases, for example, a 0.6% change is smaller than 0.8%, but still represents an increase in the price index. In this context, a -0.2% change is considered to be smaller than a 0.0% change.

4 Indexes on a December 1997=100 base.

5 Special indexes based on a substantially smaller sample. These series do not contribute to the all items index aggregation and therefore do not have a relative importance or effect.

6 Indexes on a December 2007=100 base.

7 Indexes on a December 2005=100 base.

8 Indexes on a December 1986=100 base.

9 Indexes on a December 1993=100 base.

10 This index series was calculated using a Laspeyres estimator. All other item stratum index series were calculated using a geometric means estimator.

11 Indexes on a December 2009=100 base.

12 Indexes on a December 1990=100 base.

13 Indexes on a December 1983=100 base.

14 Indexes on a December 2001=100 base.

15 Indexes on a December 1982=100 base.

16 Indexes on a December 1996=100 base.

17 Indexes on a December 1988=100 base.

NOTE: Index applies to a month as a whole, not to any specific date.