

Transmission of material in this release is embargoed until  
8:30 a.m. (EDT) Friday, June 7, 2013

USDL-13-1102

Technical information:

Household data: (202) 691-6378 • cpsinfo@bls.gov • www.bls.gov/cps

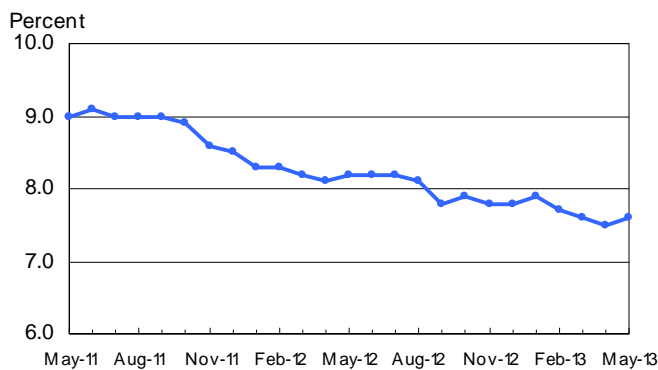
Establishment data: (202) 691-6555 • cesinfo@bls.gov • www.bls.gov/ces

Media contact: (202) 691-5902 • PressOffice@bls.gov

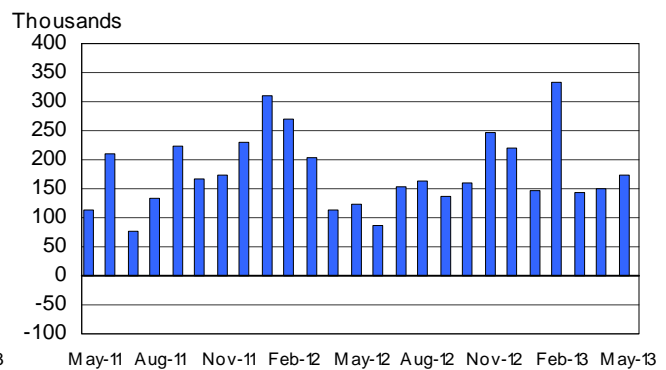
## THE EMPLOYMENT SITUATION — MAY 2013

Total **nonfarm payroll employment** increased by 175,000 in May, and the **unemployment rate** was essentially unchanged at 7.6 percent, the U.S. Bureau of Labor Statistics reported today. Employment rose in professional and business services, food services and drinking places, and retail trade.

**Chart 1. Unemployment rate, seasonally adjusted, May 2011 – May 2013**



**Chart 2. Nonfarm payroll employment over-the-month change, seasonally adjusted, May 2011 – May 2013**



### Household Survey Data

Both the number of **unemployed persons**, at 11.8 million, and the **unemployment rate**, at 7.6 percent, were essentially unchanged in May. (See table A-1.)

Among the **major worker groups**, the unemployment rates for adult men (7.2 percent), adult women (6.5 percent), teenagers (24.5 percent), whites (6.7 percent), blacks (13.5 percent), and Hispanics (9.1 percent) showed little or no change in May. The jobless rate for Asians was 4.3 percent (not seasonally adjusted), little changed from a year earlier. (See tables A-1, A-2, and A-3.)

In May, the number of **long-term unemployed** (those jobless for 27 weeks or more) was unchanged at 4.4 million. These individuals accounted for 37.3 percent of the unemployed. Over the past 12 months, the number of long-term unemployed has declined by 1.0 million. (See table A-12.)

The **civilian labor force** rose by 420,000 to 155.7 million in May; however, the **labor force participation rate** was little changed at 63.4 percent. Over the year, the labor force participation rate has declined by 0.4 percentage point. The **employment-population ratio** was unchanged in May at 58.6 percent and has shown little movement, on net, over the past year. (See table A-1.)

In May, the number of persons employed **part time for economic reasons** (sometimes referred to as involuntary part-time workers) was unchanged at 7.9 million. These individuals were working part time because their hours had been cut back or because they were unable to find a full-time job. (See table A-8.)

In May, 2.2 million persons were **marginally attached to the labor force**, down from 2.4 million a year earlier. (These data are not seasonally adjusted.) These individuals were not in the labor force, wanted and were available for work, and had looked for a job sometime in the prior 12 months. They were not counted as unemployed because they had not searched for work in the 4 weeks preceding the survey. (See table A-16.)

Among the marginally attached, there were 780,000 **discouraged workers** in May, little changed from a year earlier. (These data are not seasonally adjusted.) Discouraged workers are persons not currently looking for work because they believe no jobs are available for them. The remaining 1.4 million persons marginally attached to the labor force in May had not searched for work for reasons such as school attendance or family responsibilities. (See table A-16.)

### **Establishment Survey Data**

Total **nonfarm payroll employment** increased by 175,000 in May, with gains in professional and business services, food services and drinking places, and retail trade. Over the prior 12 months, employment growth averaged 172,000 per month. (See table B-1.)

**Professional and business services** added 57,000 jobs in May. Within this industry, employment continued to trend up in temporary help services (+26,000), computer systems design and related services (+6,000), and architectural and engineering services (+5,000). Employment in professional and business services has grown by 589,000 over the past year.

Within leisure and hospitality, employment in **food services and drinking places** continued to expand, increasing by 38,000 in May and by 337,000 over the past year.

**Retail trade** employment increased by 28,000 in May. The industry added an average of 20,000 jobs per month over the prior 12 months. In May, general merchandise stores continued to add jobs (+10,000).

**Health care** employment continued to trend up in May (+11,000). Job gains in home health care services (+7,000) and outpatient care centers (+4,000) more than offset a loss in hospitals (-6,000). Over the prior 12 months, job growth in health care averaged 24,000 per month.

Within **government**, federal government employment declined by 14,000 in May. Over the past 3 months, federal government employment has decreased by 45,000.

Employment in other major industries, including **mining and logging, construction, manufacturing, wholesale trade, transportation and warehousing, and financial activities**, showed little or no change over the month.

The **average workweek for all employees** on private nonfarm payrolls was unchanged in May at 34.5 hours. In manufacturing, the workweek increased by 0.1 hour to 40.8 hours, and overtime was unchanged at 3.3 hours. The average workweek for **production and nonsupervisory employees** on private nonfarm payrolls increased by 0.1 hour to 33.8 hours. (See tables B-2 and B-7.)

In May, **average hourly earnings for all employees** on private nonfarm payrolls, at \$23.89, changed little (+1 cent). Over the year, average hourly earnings have risen by 46 cents, or 2.0 percent. In May, average hourly earnings of private-sector **production and nonsupervisory employees**, at \$20.08, changed little (+1 cent). (See tables B-3 and B-8.)

The change in total nonfarm payroll employment for March was revised from +138,000 to +142,000, and the change for April was revised from +165,000 to +149,000. With these revisions, employment gains in March and April combined were 12,000 less than previously reported.

---

**The Employment Situation for June is scheduled to be released on Friday, July 5, 2013, at 8:30 a.m. (EDT).**

# HOUSEHOLD DATA

## Summary table A. Household data, seasonally adjusted

[Numbers in thousands]

Category	May 2012	Mar. 2013	Apr. 2013	May 2013	Change from: Apr. 2013-May 2013
<b>Employment status</b>					
Civilian noninstitutional population.....	242,966	244,995	245,175	245,363	188
Civilian labor force.....	154,998	155,028	155,238	155,658	420
Participation rate.....	63.8	63.3	63.3	63.4	0.1
Employed.....	142,302	143,286	143,579	143,898	319
Employment-population ratio.....	58.6	58.5	58.6	58.6	0.0
Unemployed.....	12,695	11,742	11,659	11,760	101
Unemployment rate.....	8.2	7.6	7.5	7.6	0.1
Not in labor force.....	87,968	89,967	89,936	89,705	-231
<b>Unemployment rates</b>					
Total, 16 years and over.....	8.2	7.6	7.5	7.6	0.1
Adult men (20 years and over).....	7.7	6.9	7.1	7.2	0.1
Adult women (20 years and over).....	7.3	7.0	6.7	6.5	-0.2
Teenagers (16 to 19 years).....	24.4	24.2	24.1	24.5	0.4
White.....	7.4	6.7	6.7	6.7	0.0
Black or African American.....	13.6	13.3	13.2	13.5	0.3
Asian (not seasonally adjusted).....	5.2	5.0	5.1	4.3	-
Hispanic or Latino ethnicity.....	11.0	9.2	9.0	9.1	0.1
Total, 25 years and over.....	6.9	6.2	6.1	6.1	0.0
Less than a high school diploma.....	13.0	11.1	11.6	11.1	-0.5
High school graduates, no college.....	8.2	7.6	7.4	7.4	0.0
Some college or associate degree.....	7.8	6.4	6.4	6.5	0.1
Bachelor's degree and higher.....	3.9	3.8	3.9	3.8	-0.1
<b>Reason for unemployment</b>					
Job losers and persons who completed temporary jobs.....	6,968	6,329	6,410	6,147	-263
Job leavers.....	902	986	864	944	80
Reentrants.....	3,450	3,176	3,151	3,333	182
New entrants.....	1,347	1,316	1,280	1,268	-12
<b>Duration of unemployment</b>					
Less than 5 weeks.....	2,602	2,464	2,474	2,706	232
5 to 14 weeks.....	3,007	2,838	2,848	2,669	-179
15 to 26 weeks.....	1,703	1,737	1,967	1,950	-17
27 weeks and over.....	5,385	4,611	4,353	4,357	4
<b>Employed persons at work part time</b>					
Part time for economic reasons.....	8,116	7,638	7,916	7,904	-12
Slack work or business conditions.....	5,174	4,906	5,129	4,841	-288
Could only find part-time work.....	2,693	2,576	2,527	2,721	194
Part time for noneconomic reasons.....	19,356	18,745	18,908	18,934	26
<b>Persons not in the labor force (not seasonally adjusted)</b>					
Marginally attached to the labor force.....	2,423	2,326	2,347	2,164	-
Discouraged workers.....	830	803	835	780	-

- Over-the-month changes are not displayed for not seasonally adjusted data.

NOTE: Persons whose ethnicity is identified as Hispanic or Latino may be of any race. Detail for the seasonally adjusted data shown in this table will not necessarily add to totals because of the independent seasonal adjustment of the various series. Updated population controls are introduced annually with the release of January data.

**ESTABLISHMENT DATA**  
**Summary table B. Establishment data, seasonally adjusted**

Category	May 2012	Mar. 2013	Apr. 2013 <sup>p</sup>	May 2013 <sup>p</sup>
<b>EMPLOYMENT BY SELECTED INDUSTRY</b> (Over-the-month change, in thousands)				
Total nonfarm.....	125	142	149	175
Total private.....	152	154	157	178
Goods-producing.....	-12	14	-15	-1
Mining and logging.....	3	2	-4	0
Construction.....	-21	16	-2	7
Manufacturing.....	6	-4	-9	-8
Durable goods <sup>1</sup> .....	7	1	-2	-2
Motor vehicles and parts.....	3.8	2.8	-2.7	2.4
Nondurable goods.....	-1	-5	-7	-6
Private service-providing <sup>1</sup> .....	164	140	172	179
Wholesale trade.....	12.7	3.4	3.9	7.9
Retail trade.....	9.4	-2.8	19.9	27.7
Transportation and warehousing.....	30.3	-4.1	5.9	-3.9
Information.....	2	3	-7	3
Financial activities.....	14	6	9	4
Professional and business services <sup>1</sup> .....	37	59	60	57
Temporary help services.....	13.4	19.5	26.4	25.6
Education and health services <sup>1</sup> .....	47	48	37	26
Health care and social assistance.....	36.6	24.7	32.3	11.8
Leisure and hospitality.....	4	31	39	43
Other services.....	6	-3	3	13
Government.....	-27	-12	-8	-3
<b>WOMEN AND PRODUCTION AND NONSUPERVISORY EMPLOYEES</b> AS A PERCENT OF ALL EMPLOYEES <sup>2</sup>				
Total nonfarm women employees.....	49.4	49.3	49.4	49.4
Total private women employees.....	47.9	47.8	47.9	47.9
Total private production and nonsupervisory employees.....	82.6	82.6	82.6	82.6
<b>HOURS AND EARNINGS</b> ALL EMPLOYEES				
<b>Total private</b>				
Average weekly hours.....	34.4	34.6	34.5	34.5
Average hourly earnings.....	\$ 23.43	\$ 23.83	\$ 23.88	\$ 23.89
Average weekly earnings.....	\$805.99	\$824.52	\$823.86	\$824.21
Index of aggregate weekly hours (2007=100) <sup>3</sup> .....	96.2	98.3	98.2	98.3
Over-the-month percent change.....	-0.1	0.4	-0.1	0.1
Index of aggregate weekly payrolls (2007=100) <sup>4</sup> .....	107.5	111.7	111.8	112.0
Over-the-month percent change.....	-0.1	0.4	0.1	0.2
<b>HOURS AND EARNINGS</b> PRODUCTION AND NONSUPERVISORY EMPLOYEES				
<b>Total private</b>				
Average weekly hours.....	33.7	33.8	33.7	33.8
Average hourly earnings.....	\$ 19.70	\$ 20.04	\$ 20.07	\$ 20.08
Average weekly earnings.....	\$663.89	\$677.35	\$676.36	\$678.70
Index of aggregate weekly hours (2002=100) <sup>3</sup> .....	103.7	105.7	105.5	106.0
Over-the-month percent change.....	0.1	0.1	-0.2	0.5
Index of aggregate weekly payrolls (2002=100) <sup>4</sup> .....	136.4	141.4	141.4	142.2
Over-the-month percent change.....	0.0	0.1	0.0	0.6
<b>DIFFUSION INDEX</b> (Over 1-month span) <sup>5</sup>				
Total private (266 industries).....	63.5	57.0	55.6	59.8
Manufacturing (81 industries).....	55.6	50.6	45.1	45.7

1 Includes other industries, not shown separately.

2 Data relate to production employees in mining and logging and manufacturing, construction employees in construction, and nonsupervisory employees in the service-providing industries.

3 The indexes of aggregate weekly hours are calculated by dividing the current month's estimates of aggregate hours by the corresponding annual average aggregate hours.

4 The indexes of aggregate weekly payrolls are calculated by dividing the current month's estimates of aggregate weekly payrolls by the corresponding annual average aggregate weekly payrolls.

5 Figures are the percent of industries with employment increasing plus one-half of the industries with unchanged employment, where 50 percent indicates an equal balance between industries with increasing and decreasing employment.

p Preliminary

# Frequently Asked Questions about Employment and Unemployment Estimates

## 1. Why are there two monthly measures of employment?

The household survey and establishment survey both produce sample-based estimates of employment, and both have strengths and limitations. The establishment survey employment series has a smaller margin of error on the measurement of month-to-month change than the household survey because of its much larger sample size. An over-the-month employment change of about 100,000 is statistically significant in the establishment survey, while the threshold for a statistically significant change in the household survey is about 400,000. However, the household survey has a more expansive scope than the establishment survey because it includes self-employed workers whose businesses are unincorporated, unpaid family workers, agricultural workers, and private household workers, who are excluded by the establishment survey. The household survey also provides estimates of employment for demographic groups. For more information on the differences between the two surveys, please visit [www.bls.gov/web/empsit/ces\\_cps\\_trends.pdf](http://www.bls.gov/web/empsit/ces_cps_trends.pdf).

## 2. Are undocumented immigrants counted in the surveys?

It is likely that both surveys include at least some undocumented immigrants. However, neither the establishment nor the household survey is designed to identify the legal status of workers. Therefore, it is not possible to determine how many are counted in either survey. The establishment survey does not collect data on the legal status of workers. The household survey does include questions which identify the foreign and native born, but it does not include questions about the legal status of the foreign born. Data on the foreign and native born are published each month in table A-7 of The Employment Situation news release.

## 3. Why does the establishment survey have revisions?

The establishment survey revises published estimates to improve its data series by incorporating additional information that was not available at the time of the initial publication of the estimates. The establishment survey revises its initial monthly estimates twice, in the immediately succeeding 2 months, to incorporate additional sample receipts from respondents in the survey and recalculated seasonal adjustment factors. For more information on the monthly revisions, please visit [www.bls.gov/ces/cesrevinfo.htm](http://www.bls.gov/ces/cesrevinfo.htm).

On an annual basis, the establishment survey incorporates a benchmark revision that re-anchors estimates to nearly complete employment counts available from unemployment insurance tax records. The benchmark helps to control for sampling and modeling errors in the estimates. For more information on the annual benchmark revision, please visit [www.bls.gov/web/empsit/cesbmart.htm](http://www.bls.gov/web/empsit/cesbmart.htm).

## 4. Does the establishment survey sample include small firms?

Yes; about 40 percent of the establishment survey sample is comprised of business establishments with fewer than 20 employees. The establishment survey sample is designed to maximize the reliability of the statewide total nonfarm employment estimate; firms from all states, size classes, and industries are appropriately sampled to achieve that goal.

## **5. Does the establishment survey account for employment from new businesses?**

Yes; monthly establishment survey estimates include an adjustment to account for the net employment change generated by business births and deaths. The adjustment comes from an econometric model that forecasts the monthly net jobs impact of business births and deaths based on the actual past values of the net impact that can be observed with a lag from the Quarterly Census of Employment and Wages. The establishment survey uses modeling rather than sampling for this purpose because the survey is not immediately able to bring new businesses into the sample. There is an unavoidable lag between the birth of a new firm and its appearance on the sampling frame and availability for selection. BLS adds new businesses to the survey twice a year.

## **6. Is the count of unemployed persons limited to just those people receiving unemployment insurance benefits?**

No; the estimate of unemployment is based on a monthly sample survey of households. All persons who are without jobs and are actively seeking and available to work are included among the unemployed. (People on temporary layoff are included even if they do not actively seek work.) There is no requirement or question relating to unemployment insurance benefits in the monthly survey.

## **7. Does the official unemployment rate exclude people who want a job but are not currently looking for work?**

Yes; however, there are separate estimates of persons outside the labor force who want a job, including those who are not currently looking because they believe no jobs are available (discouraged workers). In addition, alternative measures of labor underutilization (some of which include discouraged workers and other groups not officially counted as unemployed) are published each month in table A-15 of The Employment Situation news release. For more information about these alternative measures, please visit [www.bls.gov/cps/lfcharacteristics.htm#altmeasures](http://www.bls.gov/cps/lfcharacteristics.htm#altmeasures).

## **8. How can unusually severe weather affect employment and hours estimates?**

In the establishment survey, the reference period is the pay period that includes the 12th of the month. Unusually severe weather is more likely to have an impact on average weekly hours than on employment. Average weekly hours are estimated for paid time during the pay period, including pay for holidays, sick leave, or other time off. The impact of severe weather on hours estimates typically, but not always, results in a reduction in average weekly hours. For example, some employees may be off work for part of the pay period and not receive pay for the time missed, while some workers, such as those dealing with cleanup or repair, may work extra hours.

In order for severe weather conditions to reduce the estimate of payroll employment, employees have to be off work without pay for the entire pay period. Slightly more than 20 percent of all employees in the payroll survey sample have a weekly pay period. Employees who receive pay for any part of the pay period, even 1 hour, are counted in the payroll employment figures. It is not possible to quantify the effect of extreme weather on estimates of over-the-month change in employment.

In the household survey, the reference period is generally the calendar week that includes the 12th of the month. Persons who miss the entire week's work for weather-related events are counted as employed whether or not they are paid for the time off. The household survey collects data on the number of persons who had a job but were not at work due to bad weather. It also provides a measure of the number of persons who usually work full time but had reduced hours. Current and historical data are available on the household survey's most requested statistics page at <http://data.bls.gov/cgi-bin/surveymost?ln>.

# Technical Note

This news release presents statistics from two major surveys, the Current Population Survey (CPS; household survey) and the Current Employment Statistics survey (CES; establishment survey). The household survey provides information on the labor force, employment, and unemployment that appears in the "A" tables, marked HOUSEHOLD DATA. It is a sample survey of about 60,000 eligible households conducted by the U.S. Census Bureau for the U.S. Bureau of Labor Statistics (BLS).

The establishment survey provides information on employment, hours, and earnings of employees on nonfarm payrolls; the data appear in the "B" tables, marked ESTABLISHMENT DATA. BLS collects these data each month from the payroll records of a sample of nonagricultural business establishments. Each month the CES program surveys about 145,000 businesses and government agencies, representing approximately 557,000 individual worksites, in order to provide detailed industry data on employment, hours, and earnings of workers on nonfarm payrolls. The active sample includes approximately one-third of all nonfarm payroll employees.

For both surveys, the data for a given month relate to a particular week or pay period. In the household survey, the reference period is generally the calendar week that contains the 12th day of the month. In the establishment survey, the reference period is the pay period including the 12th, which may or may not correspond directly to the calendar week.

## Coverage, definitions, and differences between surveys

**Household survey.** The sample is selected to reflect the entire civilian noninstitutional population. Based on responses to a series of questions on work and job search activities, each person 16 years and over in a sample household is classified as employed, unemployed, or not in the labor force.

People are classified as *employed* if they did any work at all as paid employees during the reference week; worked in their own business, profession, or on their own farm; or worked without pay at least 15 hours in a family business or farm. People are also counted as employed if they were temporarily absent from their jobs because of illness, bad weather, vacation, labor-management disputes, or personal reasons.

People are classified as *unemployed* if they meet all of the following criteria: they had no employment during the reference week; they were available for work at that time; and they made specific efforts to find employment sometime during the 4-week period ending with the reference week. Persons laid off from a job and expecting recall need not be looking for work to be counted as unemployed. The unemployment data derived from the household survey in no way depend upon the eligibility for or receipt of unemployment insurance benefits.

The *civilian labor force* is the sum of employed and unemployed persons. Those persons not classified as

employed or unemployed are *not in the labor force*. The *unemployment rate* is the number unemployed as a percent of the labor force. The *labor force participation rate* is the labor force as a percent of the population, and the *employment-population ratio* is the employed as a percent of the population. Additional information about the household survey can be found at [www.bls.gov/cps/documentation.htm](http://www.bls.gov/cps/documentation.htm).

**Establishment survey.** The sample establishments are drawn from private nonfarm businesses such as factories, offices, and stores, as well as from federal, state, and local government entities. *Employees on nonfarm payrolls* are those who received pay for any part of the reference pay period, including persons on paid leave. Persons are counted in each job they hold. *Hours and earnings* data are produced for the private sector for all employees and for production and nonsupervisory employees. *Production and nonsupervisory* employees are defined as production and related employees in manufacturing and mining and logging, construction workers in construction, and non-supervisory employees in private service-providing industries.

Industries are classified on the basis of an establishment's principal activity in accordance with the 2012 version of the North American Industry Classification System. Additional information about the establishment survey can be found at [www.bls.gov/ces/](http://www.bls.gov/ces/).

**Differences in employment estimates.** The numerous conceptual and methodological differences between the household and establishment surveys result in important distinctions in the employment estimates derived from the surveys. Among these are:

- The household survey includes agricultural workers, self-employed workers whose businesses are unincorporated, unpaid family workers, and private household workers among the employed. These groups are excluded from the establishment survey.
- The household survey includes people on unpaid leave among the employed. The establishment survey does not.
- The household survey is limited to workers 16 years of age and older. The establishment survey is not limited by age.
- The household survey has no duplication of individuals, because individuals are counted only once, even if they hold more than one job. In the establishment survey, employees working at more than one job and thus appearing on more than one payroll are counted separately for each appearance.



## Seasonal adjustment

Over the course of a year, the size of the nation's labor force and the levels of employment and unemployment undergo regularly occurring fluctuations. These events may result from seasonal changes in weather, major holidays, and the opening and closing of schools. The effect of such seasonal variation can be very large.

Because these seasonal events follow a more or less regular pattern each year, their influence on the level of a series can be tempered by adjusting for regular seasonal variation. These adjustments make nonseasonal developments, such as declines in employment or increases in the participation of women in the labor force, easier to spot. For example, in the household survey, the large number of youth entering the labor force each June is likely to obscure any other changes that have taken place relative to May, making it difficult to determine if the level of economic activity has risen or declined. Similarly, in the establishment survey, payroll employment in education declines by about 20 percent at the end of the spring term and later rises with the start of the fall term, obscuring the underlying employment trends in the industry. Because seasonal employment changes at the end and beginning of the school year can be estimated, the statistics can be adjusted to make underlying employment patterns more discernable. The seasonally adjusted figures provide a more useful tool with which to analyze changes in month-to-month economic activity.

Many seasonally adjusted series are independently adjusted in both the household and establishment surveys. However, the adjusted series for many major estimates, such as total payroll employment, employment in most major sectors, total employment, and unemployment are computed by aggregating independently adjusted component series. For example, total unemployment is derived by summing the adjusted series for four major age-sex components; this differs from the unemployment estimate that would be obtained by directly adjusting the total or by combining the duration, reasons, or more detailed age categories.

For both the household and establishment surveys, a concurrent seasonal adjustment methodology is used in which new seasonal factors are calculated each month using all relevant data, up to and including the data for the current month. In the household survey, new seasonal factors are used to adjust only the current month's data. In the establishment survey, however, new seasonal factors are used each month to adjust the three most recent monthly estimates. The prior 2 months are routinely revised to incorporate additional sample reports and recalculated seasonal adjustment factors. In both surveys, 5-year revisions to historical data are made once a year.

## Reliability of the estimates

Statistics based on the household and establishment surveys are subject to both sampling and nonsampling

error. When a sample, rather than the entire population, is surveyed, there is a chance that the sample estimates may differ from the true population values they represent. The component of this difference that occurs because samples differ by chance is known as *sampling error*, and its variability is measured by the standard error of the estimate. There is about a 90-percent chance, or level of confidence, that an estimate based on a sample will differ by no more than 1.6 standard errors from the true population value because of sampling error. BLS analyses are generally conducted at the 90-percent level of confidence.

For example, the confidence interval for the monthly change in total nonfarm employment from the establishment survey is on the order of plus or minus 90,000. Suppose the estimate of nonfarm employment increases by 50,000 from one month to the next. The 90-percent confidence interval on the monthly change would range from -40,000 to +140,000 (50,000 +/- 90,000). These figures do not mean that the sample results are off by these magnitudes, but rather that there is about a 90-percent chance that the true over-the-month change lies within this interval. Since this range includes values of less than zero, we could not say with confidence that nonfarm employment had, in fact, increased that month. If, however, the reported nonfarm employment rise was 250,000, then all of the values within the 90-percent confidence interval would be greater than zero. In this case, it is likely (at least a 90-percent chance) that nonfarm employment had, in fact, risen that month. At an unemployment rate of around 6.0 percent, the 90-percent confidence interval for the monthly change in unemployment as measured by the household survey is about +/- 300,000, and for the monthly change in the unemployment rate it is about +/- 0.2 percentage point.

In general, estimates involving many individuals or establishments have lower standard errors (relative to the size of the estimate) than estimates which are based on a small number of observations. The precision of estimates also is improved when the data are cumulated over time, such as for quarterly and annual averages.

The household and establishment surveys are also affected by *nonsampling error*, which can occur for many reasons, including the failure to sample a segment of the population, inability to obtain information for all respondents in the sample, inability or unwillingness of respondents to provide correct information on a timely basis, mistakes made by respondents, and errors made in the collection or processing of the data.

For example, in the establishment survey, estimates for the most recent 2 months are based on incomplete returns; for this reason, these estimates are labeled preliminary in the tables. It is only after two successive revisions to a monthly estimate, when nearly all sample reports have been received, that the estimate is considered final.

Another major source of nonsampling error in the establishment survey is the inability to capture, on a timely basis, employment generated by new firms. To correct for this systematic underestimation of employment growth, an estimation procedure with two components is used to

account for business births. The first component excludes employment losses from business deaths from sample-based estimation in order to offset the missing employment gains from business births. This is incorporated into the sample-based estimation procedure by simply not reflecting sample units going out of business, but imputing to them the same employment trend as the other firms in the sample. This procedure accounts for most of the net birth/death employment.

The second component is an ARIMA time series model designed to estimate the residual net birth/death employment not accounted for by the imputation. The historical time series used to create and test the ARIMA model was derived from the unemployment insurance universe micro-level database, and reflects the actual residual net of births and deaths over the past 5 years.

The sample-based estimates from the establishment

survey are adjusted once a year (on a lagged basis) to universe counts of payroll employment obtained from administrative records of the unemployment insurance program. The difference between the March sample-based employment estimates and the March universe counts is known as a benchmark revision, and serves as a rough proxy for total survey error. The new benchmarks also incorporate changes in the classification of industries. Over the past decade, absolute benchmark revisions for total nonfarm employment have averaged 0.3 percent, with a range from -0.7 to 0.6 percent.

#### **Other information**

Information in this release will be made available to sensory impaired individuals upon request. Voice phone: (202) 691-5200; Federal Relay Service: (800) 877-8339.

# HOUSEHOLD DATA

## Table A-1. Employment status of the civilian population by sex and age

[Numbers in thousands]

Employment status, sex, and age	Not seasonally adjusted			Seasonally adjusted <sup>1</sup>					
	May 2012	Apr. 2013	May 2013	May 2012	Jan. 2013	Feb. 2013	Mar. 2013	Apr. 2013	May 2013
<b>TOTAL</b>									
Civilian noninstitutional population.....	242,966	245,175	245,363	242,966	244,663	244,828	244,995	245,175	245,363
Civilian labor force.....	154,998	154,739	155,734	154,998	155,654	155,524	155,028	155,238	155,658
Participation rate.....	63.8	63.1	63.5	63.8	63.6	63.5	63.3	63.3	63.4
Employed.....	142,727	143,724	144,432	142,302	143,322	143,492	143,286	143,579	143,898
Employment-population ratio.....	58.7	58.6	58.9	58.6	58.6	58.6	58.5	58.6	58.6
Unemployed.....	12,271	11,014	11,302	12,695	12,332	12,032	11,742	11,659	11,760
Unemployment rate.....	7.9	7.1	7.3	8.2	7.9	7.7	7.6	7.5	7.6
Not in labor force.....	87,968	90,436	89,629	87,968	89,008	89,304	89,967	89,936	89,705
Persons who currently want a job.....	6,835	6,329	7,193	6,349	6,631	6,821	6,722	6,413	6,712
<b>Men, 16 years and over</b>									
Civilian noninstitutional population.....	117,177	118,296	118,393	117,177	118,033	118,117	118,204	118,296	118,393
Civilian labor force.....	82,409	82,201	82,924	82,361	82,940	82,823	82,584	82,621	82,862
Participation rate.....	70.3	69.5	70.0	70.3	70.3	70.1	69.9	69.8	70.0
Employed.....	75,712	76,029	76,608	75,415	76,290	76,375	76,329	76,239	76,299
Employment-population ratio.....	64.6	64.3	64.7	64.4	64.6	64.7	64.6	64.4	64.4
Unemployed.....	6,697	6,172	6,316	6,946	6,650	6,447	6,255	6,382	6,564
Unemployment rate.....	8.1	7.5	7.6	8.4	8.0	7.8	7.6	7.7	7.9
Not in labor force.....	34,768	36,095	35,469	34,816	35,093	35,295	35,619	35,675	35,531
<b>Men, 20 years and over</b>									
Civilian noninstitutional population.....	108,503	109,736	109,839	108,503	109,448	109,541	109,635	109,736	109,839
Civilian labor force.....	79,511	79,551	80,015	79,373	80,016	79,910	79,747	79,803	79,878
Participation rate.....	73.3	72.5	72.8	73.2	73.1	72.9	72.7	72.7	72.7
Employed.....	73,567	74,042	74,456	73,230	74,139	74,249	74,228	74,159	74,124
Employment-population ratio.....	67.8	67.5	67.8	67.5	67.7	67.8	67.7	67.6	67.5
Unemployed.....	5,945	5,509	5,559	6,143	5,877	5,661	5,519	5,644	5,754
Unemployment rate.....	7.5	6.9	6.9	7.7	7.3	7.1	6.9	7.1	7.2
Not in labor force.....	28,991	30,184	29,824	29,130	29,432	29,631	29,888	29,933	29,961
<b>Women, 16 years and over</b>									
Civilian noninstitutional population.....	125,788	126,878	126,970	125,788	126,630	126,710	126,791	126,878	126,970
Civilian labor force.....	72,589	72,538	72,810	72,636	72,715	72,701	72,443	72,617	72,796
Participation rate.....	57.7	57.2	57.3	57.7	57.4	57.4	57.1	57.2	57.3
Employed.....	67,015	67,695	67,824	66,887	67,032	67,116	66,956	67,340	67,599
Employment-population ratio.....	53.3	53.4	53.4	53.2	52.9	53.0	52.8	53.1	53.2
Unemployed.....	5,574	4,843	4,986	5,749	5,682	5,585	5,487	5,277	5,197
Unemployment rate.....	7.7	6.7	6.8	7.9	7.8	7.7	7.6	7.3	7.1
Not in labor force.....	53,200	54,340	54,160	53,152	53,916	54,009	54,348	54,261	54,174
<b>Women, 20 years and over</b>									
Civilian noninstitutional population.....	117,448	118,612	118,708	117,448	118,348	118,433	118,520	118,612	118,708
Civilian labor force.....	69,775	69,833	69,955	69,777	69,749	69,772	69,544	69,744	69,895
Participation rate.....	59.4	58.9	58.9	59.4	58.9	58.9	58.7	58.8	58.9
Employed.....	64,840	65,533	65,611	64,653	64,675	64,867	64,707	65,101	65,329
Employment-population ratio.....	55.2	55.3	55.3	55.0	54.6	54.8	54.6	54.9	55.0
Unemployed.....	4,936	4,300	4,343	5,124	5,074	4,905	4,837	4,642	4,566
Unemployment rate.....	7.1	6.2	6.2	7.3	7.3	7.0	7.0	6.7	6.5
Not in labor force.....	47,672	48,778	48,753	47,670	48,599	48,661	48,976	48,868	48,813
<b>Both sexes, 16 to 19 years</b>									
Civilian noninstitutional population.....	17,015	16,827	16,816	17,015	16,867	16,854	16,840	16,827	16,816
Civilian labor force.....	5,711	5,355	5,764	5,847	5,889	5,842	5,737	5,692	5,886
Participation rate.....	33.6	31.8	34.3	34.4	34.9	34.7	34.1	33.8	35.0
Employed.....	4,320	4,149	4,364	4,419	4,508	4,376	4,351	4,320	4,445
Employment-population ratio.....	25.4	24.7	26.0	26.0	26.7	26.0	25.8	25.7	26.4
Unemployed.....	1,391	1,206	1,400	1,428	1,381	1,466	1,386	1,372	1,441
Unemployment rate.....	24.4	22.5	24.3	24.4	23.4	25.1	24.2	24.1	24.5
Not in labor force.....	11,304	11,473	11,052	11,168	10,978	11,012	11,103	11,135	10,930

<sup>1</sup> The population figures are not adjusted for seasonal variation; therefore, identical numbers appear in the unadjusted and seasonally adjusted columns.

NOTE: Updated population controls are introduced annually with the release of January data.

# HOUSEHOLD DATA

## Table A-2. Employment status of the civilian population by race, sex, and age

[Numbers in thousands]

Employment status, race, sex, and age	Not seasonally adjusted			Seasonally adjusted <sup>1</sup>					
	May 2012	Apr. 2013	May 2013	May 2012	Jan. 2013	Feb. 2013	Mar. 2013	Apr. 2013	May 2013
<b>WHITE</b>									
Civilian noninstitutional population.....	193,004	194,041	194,147	193,004	193,776	193,859	193,946	194,041	194,147
Civilian labor force.....	123,897	123,048	123,836	123,981	123,971	123,626	123,382	123,504	123,844
Participation rate.....	64.2	63.4	63.8	64.2	64.0	63.8	63.6	63.6	63.8
Employed.....	115,015	115,231	115,828	114,817	115,266	115,250	115,080	115,266	115,557
Employment-population ratio.....	59.6	59.4	59.7	59.5	59.5	59.5	59.3	59.4	59.5
Unemployed.....	8,882	7,817	8,009	9,163	8,705	8,376	8,302	8,238	8,287
Unemployment rate.....	7.2	6.4	6.5	7.4	7.0	6.8	6.7	6.7	6.7
Not in labor force.....	69,107	70,993	70,311	69,023	69,805	70,233	70,565	70,537	70,303
<b>Men, 20 years and over</b>									
Civilian labor force.....	64,680	64,441	64,785	64,581	64,924	64,720	64,549	64,674	64,680
Participation rate.....	73.8	73.0	73.3	73.7	73.7	73.4	73.1	73.2	73.2
Employed.....	60,349	60,450	60,816	60,074	60,652	60,659	60,594	60,540	60,545
Employment-population ratio.....	68.8	68.5	68.8	68.5	68.8	68.8	68.7	68.6	68.5
Unemployed.....	4,331	3,992	3,969	4,507	4,272	4,061	3,955	4,135	4,135
Unemployment rate.....	6.7	6.2	6.1	7.0	6.6	6.3	6.1	6.4	6.4
<b>Women, 20 years and over</b>									
Civilian labor force.....	54,620	54,300	54,411	54,720	54,318	54,224	54,255	54,221	54,447
Participation rate.....	58.9	58.3	58.3	59.1	58.4	58.2	58.2	58.2	58.4
Employed.....	51,087	51,374	51,390	51,078	50,869	50,946	50,940	51,123	51,311
Employment-population ratio.....	55.1	55.1	55.1	55.1	54.7	54.7	54.7	54.8	55.0
Unemployed.....	3,533	2,926	3,021	3,642	3,450	3,278	3,315	3,098	3,136
Unemployment rate.....	6.5	5.4	5.6	6.7	6.4	6.0	6.1	5.7	5.8
<b>Both sexes, 16 to 19 years</b>									
Civilian labor force.....	4,597	4,307	4,641	4,680	4,729	4,682	4,578	4,608	4,717
Participation rate.....	36.3	34.4	37.1	36.9	37.7	37.3	36.5	36.8	37.7
Employed.....	3,579	3,408	3,622	3,665	3,746	3,645	3,546	3,603	3,700
Employment-population ratio.....	28.2	27.2	28.9	28.9	29.8	29.1	28.3	28.8	29.6
Unemployed.....	1,018	899	1,019	1,015	983	1,037	1,032	1,005	1,017
Unemployment rate.....	22.1	20.9	21.9	21.7	20.8	22.1	22.5	21.8	21.6
<b>BLACK OR AFRICAN AMERICAN</b>									
Civilian noninstitutional population.....	29,854	30,290	30,322	29,854	30,190	30,223	30,255	30,290	30,322
Civilian labor force.....	18,275	18,532	18,690	18,301	18,641	18,639	18,524	18,617	18,723
Participation rate.....	61.2	61.2	61.6	61.3	61.7	61.7	61.2	61.5	61.7
Employed.....	15,837	16,240	16,226	15,808	16,073	16,059	16,068	16,167	16,202
Employment-population ratio.....	53.0	53.6	53.5	53.0	53.2	53.1	53.1	53.4	53.4
Unemployed.....	2,438	2,292	2,464	2,493	2,568	2,580	2,456	2,450	2,521
Unemployment rate.....	13.3	12.4	13.2	13.6	13.8	13.8	13.3	13.2	13.5
Not in labor force.....	11,579	11,758	11,632	11,553	11,549	11,583	11,731	11,673	11,599
<b>Men, 20 years and over</b>									
Civilian labor force.....	8,270	8,326	8,432	8,275	8,382	8,437	8,447	8,377	8,441
Participation rate.....	68.0	67.0	67.8	68.1	67.8	68.2	68.1	67.4	67.9
Employed.....	7,082	7,287	7,274	7,093	7,262	7,352	7,370	7,319	7,301
Employment-population ratio.....	58.3	58.7	58.5	58.3	58.8	59.4	59.4	58.9	58.7
Unemployed.....	1,188	1,039	1,157	1,183	1,120	1,085	1,077	1,058	1,140
Unemployment rate.....	14.4	12.5	13.7	14.3	13.4	12.9	12.7	12.6	13.5
<b>Women, 20 years and over</b>									
Civilian labor force.....	9,327	9,543	9,530	9,350	9,545	9,491	9,365	9,529	9,562
Participation rate.....	62.0	62.4	62.3	62.2	62.7	62.2	61.3	62.3	62.5
Employed.....	8,317	8,531	8,531	8,286	8,367	8,302	8,226	8,425	8,487
Employment-population ratio.....	55.3	55.8	55.7	55.1	54.9	54.4	53.9	55.1	55.4
Unemployed.....	1,011	1,012	999	1,064	1,178	1,189	1,139	1,105	1,074
Unemployment rate.....	10.8	10.6	10.5	11.4	12.3	12.5	12.2	11.6	11.2
<b>Both sexes, 16 to 19 years</b>									
Civilian labor force.....	678	663	728	676	714	711	713	711	720
Participation rate.....	25.5	25.7	28.3	25.5	27.5	27.4	27.6	27.5	28.0
Employed.....	439	422	420	430	444	404	472	423	413
Employment-population ratio.....	16.5	16.3	16.3	16.2	17.1	15.6	18.2	16.4	16.1
Unemployed.....	239	241	308	246	270	307	241	287	307
Unemployment rate.....	35.2	36.4	42.3	36.4	37.8	43.1	33.8	40.5	42.6
<b>ASIAN</b>									
Civilian noninstitutional population.....	12,749	13,244	13,343	-	-	-	-	-	-

See footnotes at end of table.

**HOUSEHOLD DATA**

**Table A-2. Employment status of the civilian population by race, sex, and age — Continued**

[Numbers in thousands]

Employment status, race, sex, and age	Not seasonally adjusted			Seasonally adjusted <sup>1</sup>					
	May 2012	Apr. 2013	May 2013	May 2012	Jan. 2013	Feb. 2013	Mar. 2013	Apr. 2013	May 2013
Civilian labor force.....	8,080	8,456	8,491	-	-	-	-	-	-
Participation rate.....	63.4	63.9	63.6	-	-	-	-	-	-
Employed.....	7,656	8,025	8,127	-	-	-	-	-	-
Employment-population ratio.....	60.0	60.6	60.9	-	-	-	-	-	-
Unemployed.....	424	431	365	-	-	-	-	-	-
Unemployment rate.....	5.2	5.1	4.3	-	-	-	-	-	-
Not in labor force.....	4,669	4,788	4,851	-	-	-	-	-	-

<sup>1</sup> The population figures are not adjusted for seasonal variation; therefore, identical numbers appear in the unadjusted and seasonally adjusted columns.

- Data not available.

NOTE: Estimates for the above race groups will not sum to totals shown in table A-1 because data are not presented for all races. Updated population controls are introduced annually with the release of January data.

**HOUSEHOLD DATA**

**Table A-3. Employment status of the Hispanic or Latino population by sex and age**

[Numbers in thousands]

Employment status, sex, and age	Not seasonally adjusted			Seasonally adjusted <sup>1</sup>					
	May 2012	Apr. 2013	May 2013	May 2012	Jan. 2013	Feb. 2013	Mar. 2013	Apr. 2013	May 2013
<b>HISPANIC OR LATINO ETHNICITY</b>									
Civilian noninstitutional population.....	36,626	37,320	37,395	36,626	37,094	37,169	37,242	37,320	37,395
Civilian labor force.....	24,534	24,475	24,872	24,568	24,572	24,563	24,354	24,512	24,848
Participation rate.....	67.0	65.6	66.5	67.1	66.2	66.1	65.4	65.7	66.4
Employed.....	21,984	22,412	22,743	21,856	22,199	22,215	22,122	22,310	22,583
Employment-population ratio.....	60.0	60.1	60.8	59.7	59.8	59.8	59.4	59.8	60.4
Unemployed.....	2,550	2,063	2,129	2,712	2,373	2,348	2,232	2,202	2,265
Unemployment rate.....	10.4	8.4	8.6	11.0	9.7	9.6	9.2	9.0	9.1
Not in labor force.....	12,092	12,845	12,523	12,058	12,522	12,606	12,888	12,808	12,547
<b>Men, 20 years and over</b>									
Civilian labor force.....	13,486	13,640	13,731	-	-	-	-	-	-
Participation rate.....	81.8	81.1	81.4	-	-	-	-	-	-
Employed.....	12,195	12,602	12,737	-	-	-	-	-	-
Employment-population ratio.....	74.0	74.9	75.5	-	-	-	-	-	-
Unemployed.....	1,291	1,037	995	-	-	-	-	-	-
Unemployment rate.....	9.6	7.6	7.2	-	-	-	-	-	-
<b>Women, 20 years and over</b>									
Civilian labor force.....	9,904	9,796	10,017	-	-	-	-	-	-
Participation rate.....	60.1	58.2	59.3	-	-	-	-	-	-
Employed.....	8,993	9,062	9,203	-	-	-	-	-	-
Employment-population ratio.....	54.5	53.8	54.5	-	-	-	-	-	-
Unemployed.....	911	734	815	-	-	-	-	-	-
Unemployment rate.....	9.2	7.5	8.1	-	-	-	-	-	-
<b>Both sexes, 16 to 19 years</b>									
Civilian labor force.....	1,144	1,039	1,124	-	-	-	-	-	-
Participation rate.....	31.3	28.5	30.8	-	-	-	-	-	-
Employed.....	796	748	804	-	-	-	-	-	-
Employment-population ratio.....	21.8	20.5	22.0	-	-	-	-	-	-
Unemployed.....	348	291	320	-	-	-	-	-	-
Unemployment rate.....	30.4	28.0	28.5	-	-	-	-	-	-

1 The population figures are not adjusted for seasonal variation; therefore, identical numbers appear in the unadjusted and seasonally adjusted columns.

- Data not available.

NOTE: Persons whose ethnicity is identified as Hispanic or Latino may be of any race. Updated population controls are introduced annually with the release of January data.

**HOUSEHOLD DATA**

**Table A-4. Employment status of the civilian population 25 years and over by educational attainment**

[Numbers in thousands]

Educational attainment	Not seasonally adjusted			Seasonally adjusted					
	May 2012	Apr. 2013	May 2013	May 2012	Jan. 2013	Feb. 2013	Mar. 2013	Apr. 2013	May 2013
<b>Less than a high school diploma</b>									
Civilian labor force.....	11,670	11,072	11,483	11,452	11,125	11,256	11,264	10,999	11,237
Participation rate.....	45.8	45.1	45.9	44.9	45.5	47.2	46.0	44.8	45.0
Employed.....	10,242	9,810	10,295	9,966	9,784	9,999	10,012	9,725	9,993
Employment-population ratio.....	40.2	39.9	41.2	39.1	40.0	41.9	40.9	39.6	40.0
Unemployed.....	1,428	1,262	1,188	1,486	1,341	1,257	1,252	1,274	1,243
Unemployment rate.....	12.2	11.4	10.3	13.0	12.0	11.2	11.1	11.6	11.1
<b>High school graduates, no college<sup>1</sup></b>									
Civilian labor force.....	37,119	36,224	36,488	36,900	36,557	36,143	36,121	36,200	36,236
Participation rate.....	59.8	58.7	59.3	59.5	58.7	58.1	58.6	58.7	58.9
Employed.....	34,239	33,614	33,963	33,883	33,585	33,289	33,359	33,510	33,572
Employment-population ratio.....	55.2	54.5	55.2	54.6	54.0	53.6	54.1	54.3	54.6
Unemployed.....	2,880	2,610	2,525	3,017	2,972	2,854	2,762	2,689	2,664
Unemployment rate.....	7.8	7.2	6.9	8.2	8.1	7.9	7.6	7.4	7.4
<b>Some college or associate degree</b>									
Civilian labor force.....	36,899	37,058	37,189	37,178	37,201	37,291	37,232	37,371	37,470
Participation rate.....	68.5	67.8	68.0	69.0	68.3	68.0	68.1	68.4	68.5
Employed.....	34,157	34,820	34,848	34,280	34,587	34,776	34,845	34,992	35,036
Employment-population ratio.....	63.4	63.7	63.7	63.7	63.5	63.5	63.8	64.1	64.0
Unemployed.....	2,741	2,238	2,341	2,898	2,614	2,515	2,387	2,379	2,435
Unemployment rate.....	7.4	6.0	6.3	7.8	7.0	6.7	6.4	6.4	6.5
<b>Bachelor's degree and higher<sup>2</sup></b>									
Civilian labor force.....	48,191	49,663	49,392	48,291	48,991	49,436	49,236	49,492	49,473
Participation rate.....	76.7	75.9	75.6	76.9	75.8	75.9	75.3	75.6	75.8
Employed.....	46,408	47,888	47,623	46,411	47,172	47,555	47,371	47,563	47,581
Employment-population ratio.....	73.9	73.2	72.9	73.9	72.9	73.0	72.5	72.7	72.9
Unemployed.....	1,783	1,775	1,770	1,879	1,819	1,881	1,865	1,929	1,892
Unemployment rate.....	3.7	3.6	3.6	3.9	3.7	3.8	3.8	3.9	3.8

1 Includes persons with a high school diploma or equivalent.

2 Includes persons with bachelor's, master's, professional, and doctoral degrees.

NOTE: Updated population controls are introduced annually with the release of January data.

**HOUSEHOLD DATA**

**Table A-5. Employment status of the civilian population 18 years and over by veteran status, period of service, and sex, not seasonally adjusted**

[Numbers in thousands]

Employment status, veteran status, and period of service	Total		Men		Women	
	May 2012	May 2013	May 2012	May 2013	May 2012	May 2013
<b>VETERANS, 18 years and over</b>						
Civilian noninstitutional population.....	21,224	21,439	19,412	19,217	1,812	2,222
Civilian labor force.....	11,228	11,203	10,077	9,768	1,152	1,435
Participation rate.....	52.9	52.3	51.9	50.8	63.6	64.6
Employed.....	10,348	10,459	9,263	9,110	1,085	1,349
Employment-population ratio.....	48.8	48.8	47.7	47.4	59.9	60.7
Unemployed.....	880	744	814	658	67	86
Unemployment rate.....	7.8	6.6	8.1	6.7	5.8	6.0
Not in labor force.....	9,996	10,236	9,335	9,449	660	787
<b>Gulf War-era II veterans</b>						
Civilian noninstitutional population.....	2,620	2,694	2,178	2,228	442	466
Civilian labor force.....	2,074	2,224	1,781	1,893	293	331
Participation rate.....	79.2	82.5	81.8	84.9	66.2	71.0
Employed.....	1,812	2,061	1,556	1,746	256	315
Employment-population ratio.....	69.1	76.5	71.4	78.4	57.8	67.6
Unemployed.....	263	163	226	147	37	16
Unemployment rate.....	12.7	7.3	12.7	7.8	12.7	4.9
Not in labor force.....	546	470	397	335	149	135
<b>Gulf War-era I veterans</b>						
Civilian noninstitutional population.....	3,032	3,470	2,545	2,742	487	728
Civilian labor force.....	2,571	2,879	2,185	2,309	386	570
Participation rate.....	84.8	83.0	85.8	84.2	79.2	78.4
Employed.....	2,410	2,729	2,039	2,193	370	536
Employment-population ratio.....	79.5	78.6	80.1	80.0	76.0	73.7
Unemployed.....	161	150	145	116	16	34
Unemployment rate.....	6.3	5.2	6.6	5.0	4.1	6.0
Not in labor force.....	462	591	360	434	101	157
<b>World War II, Korean War, and Vietnam-era veterans</b>						
Civilian noninstitutional population.....	9,936	9,871	9,615	9,497	321	373
Civilian labor force.....	3,369	3,077	3,250	2,979	118	97
Participation rate.....	33.9	31.2	33.8	31.4	36.9	26.1
Employed.....	3,135	2,860	3,023	2,769	112	91
Employment-population ratio.....	31.6	29.0	31.4	29.2	35.0	24.4
Unemployed.....	234	217	228	211	6	6
Unemployment rate.....	6.9	7.1	7.0	7.1	5.2	6.6
Not in labor force.....	6,567	6,794	6,365	6,518	202	276
<b>Veterans of other service periods</b>						
Civilian noninstitutional population.....	5,636	5,404	5,074	4,749	562	655
Civilian labor force.....	3,215	3,023	2,860	2,587	354	436
Participation rate.....	57.0	55.9	56.4	54.5	63.1	66.6
Employed.....	2,992	2,809	2,645	2,402	347	407
Employment-population ratio.....	53.1	52.0	52.1	50.6	61.8	62.2
Unemployed.....	223	214	215	185	7	29
Unemployment rate.....	6.9	7.1	7.5	7.1	2.1	6.7
Not in labor force.....	2,421	2,381	2,214	2,162	207	219
<b>NONVETERANS, 18 years and over</b>						
Civilian noninstitutional population.....	212,936	215,051	93,271	94,694	119,665	120,357
Civilian labor force.....	141,926	142,557	71,452	72,196	70,474	70,362
Participation rate.....	66.7	66.3	76.6	76.2	58.9	58.5
Employed.....	131,032	132,557	65,822	66,844	65,211	65,713
Employment-population ratio.....	61.5	61.6	70.6	70.6	54.5	54.6
Unemployed.....	10,894	10,000	5,631	5,351	5,263	4,649
Unemployment rate.....	7.7	7.0	7.9	7.4	7.5	6.6
Not in labor force.....	71,010	72,494	21,819	22,498	49,191	49,995

NOTE: Veterans served on active duty in the U.S. Armed Forces and were not on active duty at the time of the survey. Nonveterans never served on active duty in the U.S. Armed Forces. Veterans could have served anywhere in the world during these periods of service: Gulf War era II (September 2001-present), Gulf War era I (August 1990-August 2001), Vietnam era (August 1964-April 1975), Korean War (July 1950-January 1955), World War II (December 1941-December 1946), and other service periods (all other time periods). Veterans who served in more than one wartime period are classified only in the most recent one. Veterans who served during one of the selected wartime periods and another period are classified only in the wartime period. Beginning with data for January 2013, estimates for veterans incorporate population controls derived from the updated Department of Veterans Affairs' population model.



**HOUSEHOLD DATA**

**Table A-6. Employment status of the civilian population by sex, age, and disability status, not seasonally adjusted**

[Numbers in thousands]

Employment status, sex, and age	Persons with a disability		Persons with no disability	
	May 2012	May 2013	May 2012	May 2013
<b>TOTAL, 16 years and over</b>				
Civilian noninstitutional population.....	28,059	28,552	214,907	216,811
Civilian labor force.....	5,821	5,903	149,177	149,831
Participation rate.....	20.7	20.7	69.4	69.1
Employed.....	5,068	5,099	137,658	139,333
Employment-population ratio.....	18.1	17.9	64.1	64.3
Unemployed.....	752	805	11,519	10,497
Unemployment rate.....	12.9	13.6	7.7	7.0
Not in labor force.....	22,238	22,649	65,730	66,980
<b>Men, 16 to 64 years</b>				
Civilian labor force.....	2,586	2,577	75,401	75,739
Participation rate.....	34.9	34.7	82.4	82.4
Employed.....	2,225	2,216	69,344	70,039
Employment-population ratio.....	30.0	29.8	75.8	76.2
Unemployed.....	362	360	6,056	5,701
Unemployment rate.....	14.0	14.0	8.0	7.5
Not in labor force.....	4,819	4,853	16,078	16,158
<b>Women, 16 to 64 years</b>				
Civilian labor force.....	2,282	2,342	66,922	66,780
Participation rate.....	29.1	29.6	70.7	70.3
Employed.....	1,964	1,949	61,894	62,330
Employment-population ratio.....	25.0	24.7	65.4	65.7
Unemployed.....	318	393	5,028	4,450
Unemployment rate.....	13.9	16.8	7.5	6.7
Not in labor force.....	5,564	5,560	27,712	28,161
<b>Both sexes, 65 years and over</b>				
Civilian labor force.....	953	984	6,854	7,311
Participation rate.....	7.4	7.4	23.8	24.4
Employed.....	880	933	6,420	6,965
Employment-population ratio.....	6.9	7.1	22.3	23.2
Unemployed.....	73	51	435	346
Unemployment rate.....	7.6	5.2	6.3	4.7
Not in labor force.....	11,855	12,236	21,939	22,661

NOTE: A person with a disability has at least one of the following conditions: is deaf or has serious difficulty hearing; is blind or has serious difficulty seeing even when wearing glasses; has serious difficulty concentrating, remembering, or making decisions because of a physical, mental, or emotional condition; has serious difficulty walking or climbing stairs; has difficulty dressing or bathing; or has difficulty doing errands alone such as visiting a doctor's office or shopping because of a physical, mental, or emotional condition. Updated population controls are introduced annually with the release of January data.

**HOUSEHOLD DATA**

**Table A-7. Employment status of the civilian population by nativity and sex, not seasonally adjusted**

[Numbers in thousands]

Employment status and nativity	Total		Men		Women	
	May 2012	May 2013	May 2012	May 2013	May 2012	May 2013
<b>Foreign born, 16 years and over</b>						
Civilian noninstitutional population.....	37,504	37,503	18,291	18,233	19,213	19,270
Civilian labor force.....	24,878	24,958	14,405	14,386	10,473	10,572
Participation rate.....	66.3	66.5	78.8	78.9	54.5	54.9
Employed.....	23,038	23,384	13,409	13,568	9,629	9,816
Employment-population ratio.....	61.4	62.4	73.3	74.4	50.1	50.9
Unemployed.....	1,840	1,574	996	818	844	756
Unemployment rate.....	7.4	6.3	6.9	5.7	8.1	7.2
Not in labor force.....	12,625	12,545	3,886	3,847	8,740	8,698
<b>Native born, 16 years and over</b>						
Civilian noninstitutional population.....	205,462	207,860	98,887	100,160	106,575	107,700
Civilian labor force.....	130,120	130,776	68,004	68,538	62,115	62,238
Participation rate.....	63.3	62.9	68.8	68.4	58.3	57.8
Employed.....	119,689	121,048	62,303	63,040	57,386	58,008
Employment-population ratio.....	58.3	58.2	63.0	62.9	53.8	53.9
Unemployed.....	10,431	9,728	5,701	5,498	4,729	4,230
Unemployment rate.....	8.0	7.4	8.4	8.0	7.6	6.8
Not in labor force.....	75,342	77,084	30,882	31,622	44,460	45,462

NOTE: The foreign born are those residing in the United States who were not U.S. citizens at birth. That is, they were born outside the United States or one of its outlying areas such as Puerto Rico or Guam, to parents neither of whom was a U.S. citizen. The native born are persons who were born in the United States or one of its outlying areas such as Puerto Rico or Guam or who were born abroad of at least one parent who was a U.S. citizen. Updated population controls are introduced annually with the release of January data.

**HOUSEHOLD DATA**

**Table A-8. Employed persons by class of worker and part-time status**

[In thousands]

Category	Not seasonally adjusted			Seasonally adjusted					
	May 2012	Apr. 2013	May 2013	May 2012	Jan. 2013	Feb. 2013	Mar. 2013	Apr. 2013	May 2013
<b>CLASS OF WORKER</b>									
Agriculture and related industries.....	2,371	1,951	2,168	2,274	2,057	2,065	2,001	2,017	2,059
Wage and salary workers <sup>1</sup> .....	1,482	1,144	1,322	1,421	1,245	1,258	1,250	1,227	1,263
Self-employed workers, unincorporated.....	843	783	831	809	775	792	710	772	793
Unpaid family workers.....	46	23	15	-	-	-	-	-	-
Nonagricultural industries.....	140,356	141,774	142,263	140,033	141,255	141,415	141,317	141,592	141,890
Wage and salary workers <sup>1</sup> .....	131,493	133,065	133,483	131,321	132,445	132,694	132,761	132,847	133,201
Government.....	20,322	20,635	20,537	20,079	20,696	20,571	20,633	20,269	20,361
Private industries.....	111,172	112,429	112,947	111,288	111,746	112,141	112,147	112,558	112,865
Private households.....	834	617	663	-	-	-	-	-	-
Other industries.....	110,337	111,813	112,284	110,486	110,873	111,411	111,462	111,932	112,274
Self-employed workers, unincorporated.....	8,784	8,632	8,715	8,640	8,746	8,686	8,407	8,651	8,597
Unpaid family workers.....	78	77	65	-	-	-	-	-	-
<b>PERSONS AT WORK PART TIME<sup>2</sup></b>									
<b>All industries</b>									
Part time for economic reasons <sup>3</sup> .....	7,837	7,709	7,618	8,116	7,973	7,988	7,638	7,916	7,904
Slack work or business conditions.....	4,961	4,920	4,604	5,174	5,126	5,136	4,906	5,129	4,841
Could only find part-time work.....	2,620	2,530	2,727	2,693	2,630	2,578	2,576	2,527	2,721
Part time for noneconomic reasons <sup>4</sup> .....	19,694	19,829	19,315	19,356	18,464	18,908	18,745	18,908	18,934
<b>Nonagricultural industries</b>									
Part time for economic reasons <sup>3</sup> .....	7,736	7,590	7,523	7,991	7,867	7,865	7,544	7,793	7,797
Slack work or business conditions.....	4,901	4,845	4,544	5,106	5,047	5,045	4,832	5,058	4,778
Could only find part-time work.....	2,588	2,513	2,714	2,646	2,610	2,542	2,510	2,454	2,686
Part time for noneconomic reasons <sup>4</sup> .....	19,319	19,494	18,993	18,893	18,182	18,549	18,435	18,542	18,511

1 Includes self-employed workers whose businesses are incorporated.

2 Refers to those who worked 1 to 34 hours during the survey reference week and excludes employed persons who were absent from their jobs for the entire week.

3 Refers to those who worked 1 to 34 hours during the reference week for an economic reason such as slack work or unfavorable business conditions, inability to find full-time work, or seasonal declines in demand.

4 Refers to persons who usually work part time for noneconomic reasons such as childcare problems, family or personal obligations, school or training, retirement or Social Security limits on earnings, and other reasons. This excludes persons who usually work full time but worked only 1 to 34 hours during the reference week for reasons such as vacations, holidays, illness, and bad weather.

- Data not available.

NOTE: Detail for the seasonally adjusted data shown in this table will not necessarily add to totals because of the independent seasonal adjustment of the various series. Updated population controls are introduced annually with the release of January data.

# HOUSEHOLD DATA

## Table A-9. Selected employment indicators

[Numbers in thousands]

Characteristic	Not seasonally adjusted			Seasonally adjusted					
	May 2012	Apr. 2013	May 2013	May 2012	Jan. 2013	Feb. 2013	Mar. 2013	Apr. 2013	May 2013
<b>AGE AND SEX</b>									
Total, 16 years and over.....	142,727	143,724	144,432	142,302	143,322	143,492	143,286	143,579	143,898
16 to 19 years.....	4,320	4,149	4,364	4,419	4,508	4,376	4,351	4,320	4,445
16 to 17 years.....	1,347	1,361	1,415	1,431	1,453	1,520	1,482	1,490	1,505
18 to 19 years.....	2,974	2,787	2,949	2,976	3,048	2,866	2,868	2,834	2,937
20 years and over.....	138,407	139,576	140,067	137,883	138,814	139,116	138,935	139,260	139,453
20 to 24 years.....	13,360	13,444	13,339	13,416	13,471	13,527	13,382	13,569	13,412
25 years and over.....	125,046	126,132	126,728	124,510	125,311	125,604	125,615	125,678	126,057
25 to 54 years.....	94,520	94,591	94,963	94,227	94,147	94,387	94,409	94,393	94,569
25 to 34 years.....	30,748	31,185	31,402	30,692	31,137	31,152	31,180	31,133	31,292
35 to 44 years.....	30,656	30,749	30,834	30,540	30,480	30,521	30,620	30,637	30,691
45 to 54 years.....	33,116	32,658	32,726	32,996	32,531	32,714	32,610	32,623	32,586
55 years and over.....	30,527	31,540	31,765	30,283	31,164	31,217	31,206	31,285	31,488
Men, 16 years and over.....	75,712	76,029	76,608	75,415	76,290	76,375	76,329	76,239	76,299
16 to 19 years.....	2,145	1,987	2,152	2,185	2,151	2,126	2,101	2,080	2,175
16 to 17 years.....	628	607	654	659	673	713	645	653	686
18 to 19 years.....	1,518	1,380	1,498	1,517	1,472	1,408	1,444	1,426	1,485
20 years and over.....	73,567	74,042	74,456	73,230	74,139	74,249	74,228	74,159	74,124
20 to 24 years.....	6,909	6,877	6,900	6,894	7,070	7,073	7,006	6,990	6,917
25 years and over.....	66,658	67,166	67,557	66,335	67,002	67,149	67,205	67,095	67,192
25 to 54 years.....	50,525	50,543	50,867	50,316	50,474	50,603	50,669	50,565	50,613
25 to 34 years.....	16,648	16,837	16,997	16,643	16,889	16,940	16,980	16,887	16,961
35 to 44 years.....	16,500	16,666	16,732	16,441	16,519	16,597	16,655	16,673	16,660
45 to 54 years.....	17,377	17,040	17,138	17,233	17,066	17,066	17,034	17,005	16,992
55 years and over.....	16,133	16,623	16,689	16,019	16,528	16,546	16,536	16,530	16,578
Women, 16 years and over.....	67,015	67,695	67,824	66,887	67,032	67,116	66,956	67,340	67,599
16 to 19 years.....	2,175	2,162	2,213	2,234	2,357	2,250	2,250	2,239	2,271
16 to 17 years.....	719	755	762	771	780	807	837	837	819
18 to 19 years.....	1,456	1,408	1,451	1,459	1,576	1,458	1,424	1,408	1,452
20 years and over.....	64,840	65,533	65,611	64,653	64,675	64,867	64,707	65,101	65,329
20 to 24 years.....	6,451	6,567	6,440	6,521	6,402	6,455	6,376	6,578	6,495
25 years and over.....	58,389	58,966	59,171	58,174	58,309	58,455	58,411	58,583	58,866
25 to 54 years.....	43,995	44,048	44,096	43,911	43,674	43,784	43,740	43,828	43,955
25 to 34 years.....	14,101	14,348	14,405	14,049	14,248	14,212	14,200	14,246	14,330
35 to 44 years.....	14,156	14,083	14,102	14,099	13,961	13,925	13,965	13,964	14,030
45 to 54 years.....	15,738	15,618	15,588	15,763	15,465	15,648	15,575	15,619	15,595
55 years and over.....	14,394	14,918	15,076	14,264	14,636	14,671	14,670	14,755	14,910
<b>MARITAL STATUS</b>									
Married men, spouse present.....	43,903	43,905	44,284	43,815	44,117	43,934	44,007	44,024	44,176
Married women, spouse present.....	34,673	34,442	34,804	34,626	34,271	34,400	34,319	34,346	34,716
Women who maintain families.....	9,516	9,465	9,557	-	-	-	-	-	-
<b>FULL- OR PART-TIME STATUS</b>									
Full-time workers <sup>1</sup> .....	114,634	115,674	116,643	114,300	115,918	115,841	115,903	116,053	116,238
Part-time workers <sup>2</sup> .....	28,092	28,050	27,789	28,057	27,467	27,569	27,442	27,549	27,699
<b>MULTIPLE JOBHOLDERS</b>									
Total multiple jobholders.....	7,174	7,029	7,123	6,941	6,919	7,259	7,102	6,983	6,918
Percent of total employed.....	5.0	4.9	4.9	4.9	4.8	5.1	5.0	4.9	4.8
<b>SELF-EMPLOYMENT</b>									
Self-employed workers, incorporated.....	5,419	5,342	5,305	-	-	-	-	-	-
Self-employed workers, unincorporated.....	9,627	9,415	9,546	9,450	9,521	9,478	9,117	9,423	9,390

1 Employed full-time workers are persons who usually work 35 hours or more per week.

2 Employed part-time workers are persons who usually work less than 35 hours per week.

- Data not available.

NOTE: Detail for the seasonally adjusted data shown in this table will not necessarily add to totals because of the independent seasonal adjustment of the various series. Updated population controls are introduced annually with the release of January data.

# HOUSEHOLD DATA

## Table A-10. Selected unemployment indicators, seasonally adjusted

Characteristic	Number of unemployed persons (in thousands)			Unemployment rates					
	May 2012	Apr. 2013	May 2013	May 2012	Jan. 2013	Feb. 2013	Mar. 2013	Apr. 2013	May 2013
<b>AGE AND SEX</b>									
Total, 16 years and over.....	12,695	11,659	11,760	8.2	7.9	7.7	7.6	7.5	7.6
16 to 19 years.....	1,428	1,372	1,441	24.4	23.4	25.1	24.2	24.1	24.5
16 to 17 years.....	511	559	570	26.3	28.4	27.6	27.1	27.3	27.5
18 to 19 years.....	907	827	847	23.3	20.8	23.0	22.1	22.6	22.4
20 years and over.....	11,267	10,287	10,320	7.6	7.3	7.1	6.9	6.9	6.9
20 to 24 years.....	2,003	2,053	2,048	13.0	14.2	13.1	13.3	13.1	13.2
25 years and over.....	9,281	8,204	8,232	6.9	6.5	6.3	6.2	6.1	6.1
25 to 54 years.....	7,199	6,429	6,503	7.1	6.7	6.5	6.4	6.4	6.4
25 to 34 years.....	2,743	2,497	2,425	8.2	7.7	7.8	7.4	7.4	7.2
35 to 44 years.....	2,221	1,897	2,026	6.8	6.5	6.2	6.0	5.8	6.2
45 to 54 years.....	2,236	2,036	2,053	6.3	6.0	5.5	5.7	5.9	5.9
55 years and over.....	2,093	1,825	1,760	6.5	6.0	5.8	5.5	5.5	5.3
Men, 16 years and over.....	6,946	6,382	6,564	8.4	8.0	7.8	7.6	7.7	7.9
16 to 19 years.....	803	738	810	26.9	26.4	27.0	25.9	26.2	27.1
16 to 17 years.....	268	297	318	28.9	31.3	31.1	30.7	31.2	31.6
18 to 19 years.....	524	447	469	25.7	23.7	24.3	23.4	23.9	24.0
20 years and over.....	6,143	5,644	5,754	7.7	7.3	7.1	6.9	7.1	7.2
20 to 24 years.....	1,143	1,135	1,183	14.2	15.3	13.4	14.4	14.0	14.6
25 years and over.....	5,007	4,518	4,543	7.0	6.5	6.3	6.0	6.3	6.3
25 to 54 years.....	3,813	3,521	3,524	7.0	6.6	6.4	6.1	6.5	6.5
25 to 34 years.....	1,443	1,383	1,331	8.0	7.7	7.7	7.1	7.6	7.3
35 to 44 years.....	1,160	1,006	1,074	6.6	6.2	5.9	5.6	5.7	6.1
45 to 54 years.....	1,210	1,132	1,118	6.6	5.9	5.7	5.6	6.2	6.2
55 years and over.....	1,194	998	1,019	6.9	6.2	6.0	5.7	5.7	5.8
Women, 16 years and over.....	5,749	5,277	5,197	7.9	7.8	7.7	7.6	7.3	7.1
16 to 19 years.....	625	635	631	21.9	20.5	23.2	22.4	22.1	21.7
16 to 17 years.....	244	262	253	24.0	25.7	24.3	24.0	23.8	23.6
18 to 19 years.....	382	379	377	20.8	17.9	21.7	20.7	21.2	20.6
20 years and over.....	5,124	4,642	4,566	7.3	7.3	7.0	7.0	6.7	6.5
20 to 24 years.....	861	918	865	11.7	13.1	12.7	12.0	12.3	11.8
25 years and over.....	4,274	3,686	3,690	6.8	6.6	6.4	6.3	5.9	5.9
25 to 54 years.....	3,386	2,909	2,980	7.2	6.8	6.6	6.6	6.2	6.3
25 to 34 years.....	1,300	1,114	1,094	8.5	7.7	7.9	7.7	7.3	7.1
35 to 44 years.....	1,060	890	952	7.0	6.9	6.7	6.5	6.0	6.4
45 to 54 years.....	1,026	904	934	6.1	6.0	5.3	5.7	5.5	5.7
55 years and over <sup>1</sup> .....	847	756	685	5.6	5.9	5.6	5.2	4.8	4.3
<b>MARITAL STATUS</b>									
Married men, spouse present.....	2,433	2,017	2,018	5.3	4.6	4.5	4.3	4.4	4.4
Married women, spouse present.....	1,799	1,582	1,597	4.9	5.2	4.9	4.7	4.4	4.4
Women who maintain families <sup>1</sup> .....	1,168	1,086	1,044	10.9	11.3	11.0	10.7	10.3	9.9
<b>FULL- OR PART-TIME STATUS</b>									
Full-time workers <sup>2</sup> .....	10,840	9,892	9,941	8.7	8.3	8.1	7.9	7.9	7.9
Part-time workers <sup>3</sup> .....	1,825	1,760	1,752	6.1	6.2	6.2	5.9	6.0	5.9

1 Not seasonally adjusted.

2 Full-time workers are unemployed persons who have expressed a desire to work full time (35 hours or more per week) or are on layoff from full-time jobs.

3 Part-time workers are unemployed persons who have expressed a desire to work part time (less than 35 hours per week) or are on layoff from part-time jobs.

NOTE: Detail for the seasonally adjusted data shown in this table will not necessarily add to totals because of the independent seasonal adjustment of the various series. Updated population controls are introduced annually with the release of January data.

**HOUSEHOLD DATA**

**Table A-11. Unemployed persons by reason for unemployment**

[Numbers in thousands]

Reason	Not seasonally adjusted			Seasonally adjusted					
	May 2012	Apr. 2013	May 2013	May 2012	Jan. 2013	Feb. 2013	Mar. 2013	Apr. 2013	May 2013
<b>NUMBER OF UNEMPLOYED</b>									
Job losers and persons who completed temporary jobs.....	6,607	6,079	5,751	6,968	6,637	6,522	6,329	6,410	6,147
On temporary layoff.....	909	1,080	768	1,128	1,155	1,078	1,107	1,170	997
Not on temporary layoff.....	5,699	4,998	4,983	5,840	5,483	5,443	5,223	5,240	5,151
Permanent job losers.....	4,458	3,840	3,728	4,514	4,208	4,128	3,959	3,976	3,822
Persons who completed temporary jobs.....	1,240	1,158	1,255	1,326	1,275	1,315	1,264	1,264	1,329
Job leavers.....	849	836	882	902	981	956	986	864	944
Reentrants.....	3,513	2,966	3,459	3,450	3,515	3,340	3,176	3,151	3,333
New entrants.....	1,302	1,133	1,210	1,347	1,287	1,279	1,316	1,280	1,268
<b>PERCENT DISTRIBUTION</b>									
Job losers and persons who completed temporary jobs.....	53.8	55.2	50.9	55.0	53.4	53.9	53.6	54.8	52.6
On temporary layoff.....	7.4	9.8	6.8	8.9	9.3	8.9	9.4	10.0	8.5
Not on temporary layoff.....	46.4	45.4	44.1	46.1	44.1	45.0	44.2	44.8	44.1
Job leavers.....	6.9	7.6	7.8	7.1	7.9	7.9	8.4	7.4	8.1
Reentrants.....	28.6	26.9	30.6	27.2	28.3	27.6	26.9	26.9	28.5
New entrants.....	10.6	10.3	10.7	10.6	10.4	10.6	11.1	10.9	10.8
<b>UNEMPLOYED AS A PERCENT OF THE CIVILIAN LABOR FORCE</b>									
Job losers and persons who completed temporary jobs.....	4.3	3.9	3.7	4.5	4.3	4.2	4.1	4.1	3.9
Job leavers.....	0.5	0.5	0.6	0.6	0.6	0.6	0.6	0.6	0.6
Reentrants.....	2.3	1.9	2.2	2.2	2.3	2.1	2.0	2.0	2.1
New entrants.....	0.8	0.7	0.8	0.9	0.8	0.8	0.8	0.8	0.8

NOTE: Updated population controls are introduced annually with the release of January data.

**HOUSEHOLD DATA**

**Table A-12. Unemployed persons by duration of unemployment**

[Numbers in thousands]

Duration	Not seasonally adjusted			Seasonally adjusted					
	May 2012	Apr. 2013	May 2013	May 2012	Jan. 2013	Feb. 2013	Mar. 2013	Apr. 2013	May 2013
<b>NUMBER OF UNEMPLOYED</b>									
Less than 5 weeks.....	2,572	2,045	2,710	2,602	2,766	2,667	2,464	2,474	2,706
5 to 14 weeks.....	2,442	2,375	2,141	3,007	3,028	2,782	2,838	2,848	2,669
15 weeks and over.....	7,257	6,594	6,451	7,088	6,566	6,493	6,348	6,320	6,306
15 to 26 weeks.....	1,852	2,106	2,084	1,703	1,858	1,695	1,737	1,967	1,950
27 weeks and over.....	5,405	4,488	4,366	5,385	4,708	4,797	4,611	4,353	4,357
Average (mean) duration, in weeks.....	41.4	39.0	38.6	39.6	35.3	36.9	37.1	36.5	36.9
Median duration, in weeks.....	22.0	20.0	18.8	20.1	16.0	17.8	18.1	17.5	17.3
<b>PERCENT DISTRIBUTION</b>									
Less than 5 weeks.....	21.0	18.6	24.0	20.5	22.4	22.3	21.1	21.3	23.2
5 to 14 weeks.....	19.9	21.6	18.9	23.7	24.5	23.3	24.4	24.5	22.8
15 weeks and over.....	59.1	59.9	57.1	55.8	53.1	54.4	54.5	54.3	54.0
15 to 26 weeks.....	15.1	19.1	18.4	13.4	15.0	14.2	14.9	16.9	16.7
27 weeks and over.....	44.0	40.8	38.6	42.4	38.1	40.2	39.6	37.4	37.3

NOTE: Updated population controls are introduced annually with the release of January data.

**HOUSEHOLD DATA**

**Table A-13. Employed and unemployed persons by occupation, not seasonally adjusted**

[Numbers in thousands]

Occupation	Employed		Unemployed		Unemployment rates	
	May 2012	May 2013	May 2012	May 2013	May 2012	May 2013
Total, 16 years and over <sup>1</sup> .....	142,727	144,432	12,271	11,302	7.9	7.3
Management, professional, and related occupations.....	54,156	54,740	2,275	1,990	4.0	3.5
Management, business, and financial operations occupations.....	22,691	22,657	966	888	4.1	3.8
Professional and related occupations.....	31,465	32,083	1,309	1,102	4.0	3.3
Service occupations.....	25,870	26,220	2,482	2,526	8.8	8.8
Sales and office occupations.....	32,684	33,231	2,782	2,474	7.8	6.9
Sales and related occupations.....	15,179	15,320	1,308	1,174	7.9	7.1
Office and administrative support occupations.....	17,504	17,911	1,474	1,300	7.8	6.8
Natural resources, construction, and maintenance occupations.....	12,908	13,193	1,609	1,327	11.1	9.1
Farming, fishing, and forestry occupations.....	1,114	1,020	133	64	10.7	5.9
Construction and extraction occupations.....	6,971	7,128	1,153	942	14.2	11.7
Installation, maintenance, and repair occupations.....	4,823	5,045	323	321	6.3	6.0
Production, transportation, and material moving occupations.....	17,109	17,048	1,784	1,744	9.4	9.3
Production occupations.....	8,433	8,183	814	864	8.8	9.6
Transportation and material moving occupations.....	8,676	8,864	970	880	10.1	9.0

<sup>1</sup> Persons with no previous work experience and persons whose last job was in the U.S. Armed Forces are included in the unemployed total.

NOTE: Updated population controls are introduced annually with the release of January data.



**HOUSEHOLD DATA**

**Table A-14. Unemployed persons by industry and class of worker, not seasonally adjusted**

Industry and class of worker	Number of unemployed persons (in thousands)		Unemployment rates	
	May 2012	May 2013	May 2012	May 2013
Total, 16 years and over <sup>1</sup> .....	12,271	11,302	7.9	7.3
Nonagricultural private wage and salary workers.....	9,419	8,655	7.8	7.1
Mining, quarrying, and oil and gas extraction.....	47	66	4.5	5.9
Construction.....	1,150	891	14.2	10.8
Manufacturing.....	1,099	1,056	7.1	6.8
Durable goods.....	683	640	7.2	6.7
Nondurable goods.....	416	416	7.1	7.0
Wholesale and retail trade.....	1,654	1,466	8.1	7.3
Transportation and utilities.....	480	371	7.8	6.0
Information.....	230	187	7.8	6.4
Financial activities.....	462	417	5.1	4.4
Professional and business services.....	1,296	1,255	8.5	8.0
Education and health services.....	1,172	1,058	5.3	4.8
Leisure and hospitality.....	1,326	1,455	9.7	10.4
Other services.....	501	433	7.8	6.7
Agriculture and related private wage and salary workers.....	148	92	9.5	6.8
Government workers.....	899	811	4.2	3.8
Self-employed workers, unincorporated, and unpaid family workers.....	503	534	4.9	5.3

<sup>1</sup> Persons with no previous work experience and persons whose last job was in the U.S. Armed Forces are included in the unemployed total.

NOTE: Updated population controls are introduced annually with the release of January data.

**HOUSEHOLD DATA**

**Table A-15. Alternative measures of labor underutilization**

[Percent]

Measure	Not seasonally adjusted			Seasonally adjusted					
	May 2012	Apr. 2013	May 2013	May 2012	Jan. 2013	Feb. 2013	Mar. 2013	Apr. 2013	May 2013
U-1 Persons unemployed 15 weeks or longer, as a percent of the civilian labor force.....	4.7	4.3	4.1	4.6	4.2	4.2	4.1	4.1	4.1
U-2 Job losers and persons who completed temporary jobs, as a percent of the civilian labor force.....	4.3	3.9	3.7	4.5	4.3	4.2	4.1	4.1	3.9
U-3 Total unemployed, as a percent of the civilian labor force (official unemployment rate).....	7.9	7.1	7.3	8.2	7.9	7.7	7.6	7.5	7.6
U-4 Total unemployed plus discouraged workers, as a percent of the civilian labor force plus discouraged workers.....	8.4	7.6	7.7	8.7	8.4	8.3	8.1	8.0	8.0
U-5 Total unemployed, plus discouraged workers, plus all other persons marginally attached to the labor force, as a percent of the civilian labor force plus all persons marginally attached to the labor force.....	9.3	8.5	8.5	9.6	9.3	9.2	8.9	8.9	8.8
U-6 Total unemployed, plus all persons marginally attached to the labor force, plus total employed part time for economic reasons, as a percent of the civilian labor force plus all persons marginally attached to the labor force.....	14.3	13.4	13.4	14.8	14.4	14.3	13.8	13.9	13.8

NOTE: Persons marginally attached to the labor force are those who currently are neither working nor looking for work but indicate that they want and are available for a job and have looked for work sometime in the past 12 months. Discouraged workers, a subset of the marginally attached, have given a job-market related reason for not currently looking for work. Persons employed part time for economic reasons are those who want and are available for full-time work but have had to settle for a part-time schedule. Updated population controls are introduced annually with the release of January data.

**HOUSEHOLD DATA**

**Table A-16. Persons not in the labor force and multiple jobholders by sex, not seasonally adjusted**

[Numbers in thousands]

Category	Total		Men		Women	
	May 2012	May 2013	May 2012	May 2013	May 2012	May 2013
<b>NOT IN THE LABOR FORCE</b>						
Total not in the labor force.....	87,968	89,629	34,768	35,469	53,200	54,160
Persons who currently want a job.....	6,835	7,193	3,214	3,313	3,622	3,880
Marginally attached to the labor force <sup>1</sup> .....	2,423	2,164	1,239	1,081	1,183	1,083
Discouraged workers <sup>2</sup> .....	830	780	469	424	360	356
Other persons marginally attached to the labor force <sup>3</sup> .....	1,593	1,384	770	657	823	727
<b>MULTIPLE JOBHOLDERS</b>						
Total multiple jobholders <sup>4</sup> .....	7,174	7,123	3,605	3,570	3,569	3,553
Percent of total employed.....	5.0	4.9	4.8	4.7	5.3	5.2
Primary job full time, secondary job part time.....	3,655	3,704	2,111	2,082	1,544	1,622
Primary and secondary jobs both part time.....	1,979	1,954	639	689	1,340	1,265
Primary and secondary jobs both full time.....	250	191	170	117	80	74
Hours vary on primary or secondary job.....	1,245	1,237	656	671	589	566

1 Data refer to persons who want a job, have searched for work during the prior 12 months, and were available to take a job during the reference week, but had not looked for work in the past 4 weeks.

2 Includes those who did not actively look for work in the prior 4 weeks for reasons such as thinks no work available, could not find work, lacks schooling or training, employer thinks too young or old, and other types of discrimination.

3 Includes those who did not actively look for work in the prior 4 weeks for such reasons as school or family responsibilities, ill health, and transportation problems, as well as a number for whom reason for nonparticipation was not determined.

4 Includes a small number of persons who work part time on their primary job and full time on their secondary job(s), not shown separately.

NOTE: Updated population controls are introduced annually with the release of January data.

**ESTABLISHMENT DATA**

**Table B-1. Employees on nonfarm payrolls by industry sector and selected industry detail**

[In thousands]

Industry	Not seasonally adjusted				Seasonally adjusted				Change from: Apr.2013 - May2013 <sup>p</sup>
	May 2012	Mar. 2013	Apr. 2013 <sup>p</sup>	May 2013 <sup>p</sup>	May 2012	Mar. 2013	Apr. 2013 <sup>p</sup>	May 2013 <sup>p</sup>	
Total nonfarm.....	134,213	134,570	135,482	136,367	133,522	135,313	135,462	135,637	175
Total private.....	111,915	112,304	113,221	114,128	111,616	113,454	113,611	113,789	178
Goods-producing.....	18,410	18,256	18,425	18,669	18,396	18,652	18,637	18,636	-1
Mining and logging.....	855	857	856	867	855	869	865	865	0
Logging.....	49.4	47.7	47.4	49.4	50.9	50.4	51.0	51.0	0.0
Mining.....	805.6	808.8	808.4	817.1	803.9	818.1	814.2	814.2	0.0
Oil and gas extraction.....	185.9	191.0	192.1	193.5	185.7	192.4	193.1	193.8	0.7
Mining, except oil and gas <sup>1</sup> .....	227.1	220.1	220.5	225.1	223.6	226.1	222.8	220.7	-2.1
Coal mining.....	88.8	85.8	84.1	84.9	88.1	85.4	84.1	84.0	-0.1
Support activities for mining.....	392.6	397.7	395.8	398.5	394.6	399.6	398.3	399.7	1.4
Construction.....	5,648	5,487	5,655	5,848	5,615	5,799	5,797	5,804	7
Construction of buildings.....	1,228.3	1,212.2	1,236.4	1,264.4	1,234.3	1,263.7	1,269.4	1,267.7	-1.7
Residential building.....	569.6	551.7	571.9	590.2	572.5	580.1	589.7	590.6	0.9
Nonresidential building.....	658.7	660.5	664.5	674.2	661.8	683.6	679.7	677.1	-2.6
Heavy and civil engineering construction.....	880.2	809.8	857.6	915.1	860.8	889.6	886.3	889.4	3.1
Specialty trade contractors.....	3,539.6	3,464.7	3,560.8	3,668.3	3,519.4	3,646.0	3,641.5	3,647.3	5.8
Residential specialty trade contractors.....	1,482.2	1,451.5	1,503.0	1,557.8	1,468.3	1,536.6	1,540.0	1,544.6	4.6
Nonresidential specialty trade contractors.....	2,057.4	2,013.2	2,057.8	2,110.5	2,051.1	2,109.4	2,101.5	2,102.7	1.2
Manufacturing.....	11,907	11,912	11,914	11,954	11,926	11,984	11,975	11,967	-8
Durable goods.....	7,468	7,486	7,491	7,510	7,467	7,512	7,510	7,508	-2
Wood products.....	338.1	340.4	341.6	346.2	336.2	346.3	344.6	345.9	1.3
Nonmetallic mineral products.....	367.1	358.5	363.6	371.4	363.7	367.7	366.7	367.4	0.7
Primary metals.....	404.4	397.4	396.9	394.7	404.1	398.2	396.2	394.0	-2.2
Fabricated metal products.....	1,410.7	1,425.1	1,429.2	1,434.6	1,411.9	1,431.4	1,433.7	1,434.0	0.3
Machinery.....	1,100.4	1,104.3	1,105.0	1,104.1	1,101.5	1,104.0	1,106.4	1,103.3	-3.1
Computer and electronic products <sup>1</sup> .....	1,096.8	1,082.3	1,080.2	1,082.5	1,098.8	1,084.3	1,083.6	1,084.5	0.9
Computer and peripheral equipment.....	158.2	159.4	160.2	161.2	158.7	160.0	160.8	161.9	1.1
Communications equipment.....	109.3	107.8	107.2	107.3	109.7	108.0	107.7	107.4	-0.3
Semiconductors and electronic components.....	384.9	379.4	378.4	378.7	386.0	379.8	379.2	379.2	0.0
Electronic instruments.....	403.1	396.5	395.4	395.9	403.1	396.9	396.5	396.5	0.0
Electrical equipment and appliances.....	370.7	363.6	363.9	364.3	371.1	365.9	365.9	366.1	0.2
Transportation equipment <sup>1</sup> .....	1,449.6	1,489.8	1,484.8	1,483.5	1,449.5	1,484.2	1,483.9	1,484.0	0.1
Motor vehicles and parts <sup>2</sup> .....	771.4	802.9	796.5	798.2	770.3	796.9	794.2	796.6	2.4
Furniture and related products.....	352.1	350.7	351.0	352.5	350.6	352.4	351.8	350.9	-0.9
Miscellaneous durable goods manufacturing.....	578.3	573.9	574.9	576.4	580.0	577.5	577.6	577.5	-0.1
Nondurable goods.....	4,439	4,426	4,423	4,444	4,459	4,472	4,465	4,459	-6
Food manufacturing.....	1,449.8	1,445.0	1,445.2	1,453.7	1,468.9	1,474.5	1,474.9	1,472.1	-2.8
Textile mills.....	118.7	114.4	114.3	114.3	118.0	114.6	114.3	113.8	-0.5
Textile product mills.....	117.5	115.2	114.0	114.4	116.9	115.8	114.5	114.2	-0.3
Apparel.....	150.4	145.7	142.7	143.8	149.6	145.8	143.2	143.3	0.1
Paper and paper products.....	379.2	375.3	374.9	375.6	380.3	377.3	376.9	376.6	-0.3
Printing and related support activities.....	465.6	454.5	451.5	450.0	465.4	456.0	452.7	449.5	-3.2
Petroleum and coal products.....	113.7	112.8	113.8	115.0	112.7	115.4	114.4	113.6	-0.8
Chemicals.....	779.9	793.3	793.8	796.4	782.4	793.8	794.8	795.7	0.9
Plastics and rubber products.....	643.6	654.2	654.4	656.7	643.4	655.9	656.2	656.3	0.1
Miscellaneous nondurable goods manufacturing.....	220.5	215.3	218.8	224.5	221.5	222.4	223.4	224.2	0.8
Private service-providing.....	93,505	94,048	94,796	95,459	93,220	94,802	94,974	95,153	179
Trade, transportation, and utilities.....	25,423	25,497	25,619	25,828	25,463	25,804	25,835	25,868	33
Wholesale trade.....	5,678.8	5,704.7	5,722.2	5,761.5	5,666.7	5,737.1	5,741.0	5,748.9	7.9
Durable goods.....	2,829.7	2,843.2	2,846.7	2,861.5	2,828.4	2,855.9	2,857.4	2,860.1	2.7
Nondurable goods.....	1,980.3	1,980.1	1,990.5	2,010.1	1,969.9	1,996.0	1,996.4	1,999.2	2.8
Electronic markets and agents and brokers... ..	868.8	881.4	885.0	889.9	868.4	885.2	887.2	889.6	2.4
Retail trade.....	14,787.3	14,815.7	14,909.6	15,036.6	14,838.9	15,049.5	15,069.4	15,097.1	27.7
Motor vehicle and parts dealers <sup>1</sup> .....	1,735.0	1,748.4	1,761.9	1,774.0	1,727.3	1,760.8	1,760.8	1,762.1	1.3
Automobile dealers.....	1,089.4	1,106.4	1,113.4	1,117.5	1,088.2	1,110.9	1,113.6	1,113.9	0.3
Furniture and home furnishings stores.....	433.3	443.8	445.6	444.9	440.5	450.7	452.7	453.5	0.8

See footnotes at end of table.

**ESTABLISHMENT DATA**

**Table B-1. Employees on nonfarm payrolls by industry sector and selected industry detail**

— Continued

[In thousands]

Industry	Not seasonally adjusted				Seasonally adjusted				Change from: Apr.2013 - May2013 <sup>P</sup>
	May 2012	Mar. 2013	Apr. 2013 <sup>P</sup>	May 2013 <sup>P</sup>	May 2012	Mar. 2013	Apr. 2013 <sup>P</sup>	May 2013 <sup>P</sup>	
<b>Retail trade - Continued</b>									
Electronics and appliance stores.....	502.7	498.8	496.2	496.6	511.1	504.2	503.2	504.8	1.6
Building material and garden supply stores...	1,242.3	1,167.5	1,225.9	1,262.3	1,170.5	1,177.0	1,181.0	1,183.8	2.8
Food and beverage stores.....	2,853.6	2,864.0	2,873.3	2,905.4	2,852.9	2,895.5	2,899.7	2,904.3	4.6
Health and personal care stores.....	992.5	1,019.5	1,025.0	1,024.8	994.4	1,026.2	1,031.7	1,029.9	-1.8
Gasoline stations.....	844.6	837.7	844.7	857.1	841.1	850.6	851.0	855.8	4.8
Clothing and clothing accessories stores.....	1,344.2	1,391.3	1,378.7	1,385.4	1,389.2	1,443.4	1,431.0	1,436.8	5.8
Sporting goods, hobby, book, and music stores.....	570.8	561.7	560.3	560.3	585.4	578.7	577.8	575.1	-2.7
General merchandise stores <sup>1</sup> .....	3,039.9	3,061.3	3,069.5	3,078.8	3,087.6	3,108.3	3,123.1	3,132.8	9.7
Department stores.....	1,466.5	1,451.0	1,455.8	1,454.3	1,507.0	1,486.1	1,493.9	1,497.1	3.2
Miscellaneous store retailers.....	799.4	785.2	795.9	812.9	796.5	807.8	811.0	812.5	1.5
Nonstore retailers.....	429.0	436.5	432.6	434.1	442.4	446.3	446.4	445.7	-0.7
<b>Transportation and warehousing.....</b>	<b>4,402.4</b>	<b>4,422.7</b>	<b>4,431.9</b>	<b>4,471.3</b>	<b>4,402.7</b>	<b>4,462.2</b>	<b>4,468.1</b>	<b>4,464.2</b>	<b>-3.9</b>
Air transportation.....	461.0	444.4	446.2	448.3	460.0	446.4	447.3	447.3	0.0
Rail transportation.....	231.1	230.5	231.5	231.7	231.2	230.9	230.9	230.6	-0.3
Water transportation.....	62.3	61.5	61.9	62.6	62.2	62.9	63.0	62.4	-0.6
Truck transportation.....	1,342.1	1,348.2	1,368.3	1,385.0	1,345.9	1,374.0	1,386.5	1,385.8	-0.7
Transit and ground passenger transportation.....	464.3	483.8	484.1	488.2	446.7	470.5	470.1	470.4	0.3
Pipeline transportation.....	43.6	44.5	44.3	45.1	43.8	44.7	44.7	45.2	0.5
Scenic and sightseeing transportation.....	28.7	21.4	23.6	28.9	26.9	27.0	26.3	26.7	0.4
Support activities for transportation.....	577.8	584.2	583.4	583.9	578.3	586.4	583.4	582.2	-1.2
Couriers and messengers.....	518.2	522.0	510.3	518.3	528.7	532.3	530.3	530.4	0.1
Warehousing and storage.....	673.3	682.2	678.3	679.3	679.0	687.1	685.6	683.2	-2.4
<b>Utilities.....</b>	<b>554.7</b>	<b>553.9</b>	<b>555.5</b>	<b>558.1</b>	<b>554.2</b>	<b>555.6</b>	<b>556.5</b>	<b>557.3</b>	<b>0.8</b>
<b>Information.....</b>	<b>2,690</b>	<b>2,699</b>	<b>2,689</b>	<b>2,706</b>	<b>2,681</b>	<b>2,701</b>	<b>2,694</b>	<b>2,697</b>	<b>3</b>
Publishing industries, except Internet.....	734.7	727.5	727.9	725.9	738.9	730.1	730.2	729.6	-0.6
Motion picture and sound recording industries.....	391.4	401.5	388.4	407.1	376.1	400.2	391.6	394.0	2.4
Broadcasting, except Internet.....	286.7	286.0	286.8	284.8	288.0	285.8	286.0	285.1	-0.9
Telecommunications.....	853.3	856.0	855.2	855.0	856.0	855.1	856.1	857.1	1.0
Data processing, hosting and related services.....	252.3	250.6	252.0	252.8	250.1	250.3	250.5	250.1	-0.4
Other information services.....	171.6	177.6	178.6	180.2	171.9	179.3	180.0	181.3	1.3
<b>Financial activities.....</b>	<b>7,773</b>	<b>7,823</b>	<b>7,843</b>	<b>7,874</b>	<b>7,782</b>	<b>7,859</b>	<b>7,868</b>	<b>7,872</b>	<b>4</b>
Finance and insurance.....	5,814.0	5,876.4	5,879.0	5,881.8	5,825.4	5,880.1	5,889.9	5,889.3	-0.6
Monetary authorities - central bank.....	16.9	16.5	16.6	16.7	17.0	16.7	16.7	16.7	0.0
Credit intermediation and related activities <sup>1</sup> .....	2,562.6	2,601.9	2,606.7	2,604.5	2,570.0	2,602.9	2,611.1	2,608.2	-2.9
Depository credit intermediation <sup>1</sup> .....	1,734.8	1,735.2	1,734.0	1,731.2	1,737.6	1,737.0	1,737.2	1,734.1	-3.1
Commercial banking.....	1,317.1	1,308.8	1,306.2	1,301.9	1,318.8	1,309.4	1,308.4	1,305.0	-3.4
Securities, commodity contracts, investments.....	809.9	826.0	826.4	825.7	813.3	826.4	828.5	829.9	1.4
Insurance carriers and related activities.....	2,337.5	2,345.7	2,342.7	2,348.5	2,337.9	2,347.6	2,346.8	2,348.0	1.2
Funds, trusts, and other financial vehicles.....	87.1	86.3	86.6	86.4	87.2	86.5	86.8	86.5	-0.3
Real estate and rental and leasing.....	1,958.5	1,946.7	1,964.2	1,992.5	1,956.1	1,978.9	1,978.1	1,982.7	4.6
Real estate.....	1,418.2	1,416.7	1,426.7	1,442.3	1,416.9	1,437.0	1,433.4	1,437.5	4.1
Rental and leasing services.....	516.1	506.7	514.8	527.3	514.9	518.4	521.8	522.1	0.3
Lessors of nonfinancial intangible assets.....	24.2	23.3	22.7	22.9	24.3	23.5	22.9	23.1	0.2
<b>Professional and business services.....</b>	<b>17,872</b>	<b>18,169</b>	<b>18,386</b>	<b>18,481</b>	<b>17,878</b>	<b>18,350</b>	<b>18,410</b>	<b>18,467</b>	<b>57</b>
Professional and technical services <sup>1</sup> .....	7,801.4	8,127.7	8,155.6	8,052.3	7,867.4	8,063.1	8,085.5	8,103.7	18.2
Legal services.....	1,118.0	1,123.1	1,125.9	1,127.6	1,121.5	1,128.2	1,129.8	1,129.3	-0.5
Accounting and bookkeeping services.....	863.9	1,053.8	1,040.0	898.1	913.6	935.0	937.0	940.1	3.1
Architectural and engineering services.....	1,321.6	1,325.8	1,334.3	1,348.8	1,323.5	1,343.5	1,346.0	1,350.9	4.9
Computer systems design and related services.....	1,604.2	1,667.3	1,677.2	1,685.6	1,609.7	1,676.1	1,680.8	1,686.8	6.0
Management and technical consulting services.....	1,108.1	1,160.3	1,168.3	1,176.0	1,112.8	1,169.6	1,172.9	1,176.1	3.2
Management of companies and enterprises.....	2,000.6	2,024.3	2,024.4	2,034.2	2,004.4	2,030.7	2,034.1	2,037.2	3.1
Administrative and waste services.....	8,070.2	8,016.7	8,206.3	8,394.6	8,006.3	8,256.0	8,290.8	8,326.4	35.6

See footnotes at end of table.

**ESTABLISHMENT DATA**

**Table B-1. Employees on nonfarm payrolls by industry sector and selected industry detail**

— Continued

[In thousands]

Industry	Not seasonally adjusted				Seasonally adjusted				Change from: Apr.2013 - May2013 <sup>p</sup>
	May 2012	Mar. 2013	Apr. 2013 <sup>p</sup>	May 2013 <sup>p</sup>	May 2012	Mar. 2013	Apr. 2013 <sup>p</sup>	May 2013 <sup>p</sup>	
Administrative and waste services - Continued									
Administrative and support services <sup>1</sup> .....	7,698.9	7,646.2	7,832.8	8,015.3	7,634.8	7,877.8	7,913.6	7,948.6	35.0
Employment services <sup>1</sup> .....	3,133.4	3,183.9	3,246.7	3,324.6	3,132.7	3,286.2	3,314.6	3,334.5	19.9
Temporary help services .....	2,496.8	2,535.0	2,588.8	2,659.3	2,493.8	2,627.8	2,654.2	2,679.8	25.6
Business support services .....	813.0	834.5	835.6	838.1	824.0	835.9	841.3	845.6	4.3
Services to buildings and dwellings .....	1,906.0	1,743.5	1,859.7	1,947.7	1,830.9	1,862.2	1,861.3	1,867.7	6.4
Waste management and remediation services .....	371.3	370.5	373.5	379.3	371.5	378.2	377.2	377.8	0.6
Education and health services .....	20,357	20,748	20,800	20,709	20,290	20,590	20,627	20,653	26
Educational services .....	3,401.5	3,516.8	3,525.3	3,418.5	3,353.7	3,360.6	3,365.9	3,380.1	14.2
Health care and social assistance .....	16,955.9	17,231.0	17,274.7	17,290.9	16,936.1	17,229.1	17,261.4	17,273.2	11.8
Health care <sup>3</sup> .....	14,259.6	14,487.4	14,515.8	14,529.4	14,274.3	14,508.5	14,532.8	14,543.5	10.7
Ambulatory health care services <sup>1</sup> .....	6,299.5	6,454.5	6,479.2	6,496.6	6,301.6	6,467.7	6,484.8	6,500.1	15.3
Offices of physicians .....	2,385.8	2,418.7	2,421.1	2,426.4	2,391.1	2,423.3	2,429.5	2,434.2	4.7
Outpatient care centers .....	647.2	679.8	681.7	685.3	646.9	679.3	680.9	684.4	3.5
Home health care services .....	1,192.3	1,256.4	1,268.6	1,275.7	1,190.6	1,259.2	1,266.5	1,273.4	6.9
Hospitals .....	4,771.2	4,830.6	4,828.4	4,821.6	4,781.1	4,831.0	4,835.8	4,829.9	-5.9
Nursing and residential care facilities <sup>1</sup> .....	3,188.9	3,202.3	3,208.2	3,211.2	3,191.6	3,209.8	3,212.2	3,213.5	1.3
Nursing care facilities .....	1,664.4	1,659.3	1,660.1	1,659.0	1,665.6	1,662.9	1,662.8	1,660.1	-2.7
Social assistance <sup>1</sup> .....	2,696.3	2,743.6	2,758.9	2,761.5	2,661.8	2,720.6	2,728.6	2,729.7	1.1
Child day care services .....	881.9	879.8	881.6	882.8	855.7	858.8	857.8	855.5	-2.3
Leisure and hospitality .....	13,946	13,668	13,993	14,356	13,702	14,026	14,065	14,108	43
Arts, entertainment, and recreation .....	2,027.0	1,865.2	1,964.1	2,093.5	1,955.8	2,010.3	2,008.7	2,018.2	9.5
Performing arts and spectator sports .....	423.5	408.6	445.3	450.7	403.0	428.4	433.1	430.5	-2.6
Museums, historical sites, and similar institutions .....	138.4	131.6	135.4	141.7	133.5	139.3	138.0	137.6	-0.4
Amusements, gambling, and recreation .....	1,465.1	1,325.0	1,383.4	1,501.1	1,419.3	1,442.6	1,437.6	1,450.1	12.5
Accommodation and food services .....	11,919.3	11,802.8	12,028.7	12,262.5	11,746.6	12,015.8	12,056.4	12,089.7	33.3
Accommodation .....	1,823.4	1,762.5	1,787.5	1,833.8	1,822.5	1,827.4	1,833.7	1,828.9	-4.8
Food services and drinking places .....	10,095.9	10,040.3	10,241.2	10,428.7	9,924.1	10,188.4	10,222.7	10,260.8	38.1
Other services .....	5,444	5,444	5,466	5,505	5,424	5,472	5,475	5,488	13
Repair and maintenance .....	1,194.2	1,194.4	1,200.3	1,206.5	1,185.9	1,198.1	1,198.8	1,203.5	4.7
Personal and laundry services .....	1,316.9	1,322.4	1,332.0	1,347.2	1,303.8	1,329.5	1,329.9	1,333.0	3.1
Membership associations and organizations .....	2,933.0	2,927.3	2,933.3	2,951.4	2,934.5	2,944.2	2,946.4	2,951.5	5.1
Government .....	22,298	22,266	22,261	22,239	21,906	21,859	21,851	21,848	-3
Federal .....	2,821.0	2,762.0	2,760.0	2,748.0	2,821.0	2,773.0	2,762.0	2,748.0	-14.0
Federal, except U.S. Postal Service .....	2,209.3	2,173.4	2,169.0	2,166.2	2,207.1	2,180.7	2,173.2	2,163.8	-9.4
U.S. Postal Service .....	612.0	588.8	590.5	581.7	614.3	592.3	588.4	584.6	-3.8
State government .....	5,081.0	5,197.0	5,202.0	5,082.0	5,049.0	5,051.0	5,048.0	5,046.0	-2.0
State government education .....	2,404.7	2,546.1	2,551.0	2,431.6	2,378.4	2,395.5	2,397.0	2,401.3	4.3
State government, excluding education .....	2,676.7	2,650.5	2,651.2	2,650.2	2,670.5	2,655.0	2,650.7	2,644.5	-6.2
Local government .....	14,396.0	14,307.0	14,299.0	14,409.0	14,036.0	14,035.0	14,041.0	14,054.0	13.0
Local government education .....	8,135.8	8,142.3	8,111.8	8,141.9	7,766.3	7,767.7	7,771.2	7,778.4	7.2
Local government, excluding education .....	6,260.5	6,165.1	6,187.1	6,267.5	6,269.6	6,267.7	6,269.5	6,275.2	5.7

1 Includes other industries, not shown separately.

2 Includes motor vehicles, motor vehicle bodies and trailers, and motor vehicle parts.

3 Includes ambulatory health care services, hospitals, and nursing and residential care facilities.

p Preliminary

**ESTABLISHMENT DATA**

**Table B-2. Average weekly hours and overtime of all employees on private nonfarm payrolls by industry sector, seasonally adjusted**

Industry	May 2012	Mar. 2013	Apr. 2013 <sup>p</sup>	May 2013 <sup>p</sup>
<b>AVERAGE WEEKLY HOURS</b>				
Total private.....	34.4	34.6	34.5	34.5
Goods-producing.....	40.1	40.4	40.3	40.4
Mining and logging.....	43.6	43.3	43.2	43.6
Construction.....	38.5	39.1	39.0	39.2
Manufacturing.....	40.6	40.8	40.7	40.8
Durable goods.....	41.0	41.1	41.0	41.1
Nondurable goods.....	40.0	40.3	40.0	40.2
Private service-providing.....	33.3	33.4	33.3	33.4
Trade, transportation, and utilities.....	34.6	34.7	34.6	34.6
Wholesale trade.....	38.7	38.7	38.7	38.8
Retail trade.....	31.6	31.7	31.5	31.6
Transportation and warehousing.....	38.3	38.8	38.6	38.6
Utilities.....	41.6	42.5	42.1	42.2
Information.....	36.6	36.4	36.4	36.6
Financial activities.....	37.1	37.2	37.2	37.3
Professional and business services.....	35.9	36.1	36.0	36.1
Education and health services.....	32.9	32.9	32.9	32.9
Leisure and hospitality.....	26.0	26.2	26.1	26.1
Other services.....	31.6	31.8	31.7	31.8
<b>AVERAGE OVERTIME HOURS</b>				
Manufacturing.....	3.3	3.4	3.3	3.3
Durable goods.....	3.3	3.3	3.3	3.3
Nondurable goods.....	3.2	3.5	3.4	3.4

p Preliminary

**ESTABLISHMENT DATA**

**Table B-3. Average hourly and weekly earnings of all employees on private nonfarm payrolls by industry sector, seasonally adjusted**

Industry	Average hourly earnings				Average weekly earnings			
	May 2012	Mar. 2013	Apr. 2013 <sup>p</sup>	May 2013 <sup>p</sup>	May 2012	Mar. 2013	Apr. 2013 <sup>p</sup>	May 2013 <sup>p</sup>
Total private.....	\$23.43	\$23.83	\$23.88	\$23.89	\$ 805.99	\$ 824.52	\$ 823.86	\$ 824.21
Goods-producing.....	24.61	24.96	24.98	25.04	986.86	1,008.38	1,006.69	1,011.62
Mining and logging.....	28.62	29.08	29.08	29.50	1,247.83	1,259.16	1,256.26	1,286.20
Construction.....	25.71	26.02	26.06	26.06	989.84	1,017.38	1,016.34	1,021.55
Manufacturing.....	23.80	24.15	24.17	24.22	966.28	985.32	983.72	988.18
Durable goods.....	25.15	25.55	25.57	25.64	1,031.15	1,050.11	1,048.37	1,053.80
Nondurable goods.....	21.50	21.75	21.76	21.77	860.00	876.53	870.40	875.15
Private service-providing.....	23.15	23.56	23.61	23.62	770.90	786.90	786.21	788.91
Trade, transportation, and utilities.....	20.40	20.84	20.89	20.91	705.84	723.15	722.79	723.49
Wholesale trade.....	26.73	27.51	27.57	27.54	1,034.45	1,064.64	1,066.96	1,068.55
Retail trade.....	16.20	16.59	16.62	16.63	511.92	525.90	523.53	525.51
Transportation and warehousing.....	22.03	22.06	22.16	22.20	843.75	855.93	855.38	856.92
Utilities.....	33.85	34.99	34.74	35.28	1,408.16	1,487.08	1,462.55	1,488.82
Information.....	31.73	32.58	32.84	32.67	1,161.32	1,185.91	1,195.38	1,195.72
Financial activities.....	29.10	29.96	30.12	30.08	1,079.61	1,114.51	1,120.46	1,121.98
Professional and business services.....	28.03	28.41	28.40	28.41	1,006.28	1,025.60	1,022.40	1,025.60
Education and health services.....	24.10	24.47	24.52	24.52	792.89	805.06	806.71	806.71
Leisure and hospitality.....	13.33	13.43	13.43	13.45	346.58	351.87	350.52	351.05
Other services.....	20.76	21.11	21.15	21.22	656.02	671.30	670.46	674.80

p Preliminary



**ESTABLISHMENT DATA**

**Table B-4. Indexes of aggregate weekly hours and payrolls for all employees on private nonfarm payrolls by industry sector, seasonally adjusted**

[2007=100]

Industry	Index of aggregate weekly hours <sup>1</sup>					Index of aggregate weekly payrolls <sup>2</sup>				
	May 2012	Mar. 2013	Apr. 2013 <sup>p</sup>	May 2013 <sup>p</sup>	Percent change from: Apr. 2013 - May 2013 <sup>p</sup>	May 2012	Mar. 2013	Apr. 2013 <sup>p</sup>	May 2013 <sup>p</sup>	Percent change from: Apr. 2013 - May 2013 <sup>p</sup>
Total private.....	96.2	98.3	98.2	98.3	0.1	107.5	111.7	111.8	112.0	0.2
Goods-producing.....	84.0	85.9	85.6	85.8	0.2	93.5	96.9	96.6	97.1	0.5
Mining and logging.....	117.1	118.2	117.4	118.5	0.9	134.6	138.0	137.1	140.4	2.4
Construction.....	74.5	78.2	77.9	78.4	0.6	83.2	88.4	88.2	88.8	0.7
Manufacturing.....	87.1	88.0	87.7	87.8	0.1	96.4	98.8	98.6	98.9	0.3
Durable goods.....	86.2	86.9	86.7	86.9	0.2	96.3	98.6	98.4	98.9	0.5
Nondurable goods.....	89.0	89.9	89.1	89.5	0.4	97.1	99.3	98.4	98.8	0.4
Private service-providing.....	99.6	101.6	101.5	102.0	0.5	111.7	116.0	116.1	116.7	0.5
Trade, transportation, and utilities.....	95.8	97.4	97.2	97.3	0.1	105.2	109.2	109.3	109.6	0.3
Wholesale trade.....	95.7	96.9	96.9	97.3	0.4	106.7	111.2	111.5	111.9	0.4
Retail trade.....	95.2	96.9	96.4	96.9	0.5	102.0	106.3	105.9	106.5	0.6
Transportation and warehousing.....	96.5	99.1	98.7	98.6	-0.1	107.9	110.9	111.0	111.1	0.1
Utilities.....	99.7	102.2	101.4	101.8	0.4	111.6	118.1	116.4	118.6	1.9
Information.....	89.6	89.8	89.6	90.1	0.6	101.2	104.2	104.7	104.9	0.2
Financial activities.....	94.6	95.7	95.9	96.2	0.3	107.3	111.9	112.6	112.8	0.2
Professional and business services.....	100.9	104.2	104.2	104.9	0.7	114.6	119.9	119.9	120.7	0.7
Education and health services.....	108.7	110.3	110.5	110.6	0.1	122.7	126.4	126.9	127.1	0.2
Leisure and hospitality.....	101.6	104.9	104.7	105.1	0.4	109.3	113.6	113.5	114.0	0.4
Other services.....	95.0	96.4	96.2	96.7	0.5	111.9	115.5	115.4	116.4	0.9

1 The indexes of aggregate weekly hours are calculated by dividing the current month's estimates of aggregate hours by the corresponding 2007 annual average aggregate hours. Aggregate hours estimates are the product of estimates of average weekly hours and employment.

2 The indexes of aggregate weekly payrolls are calculated by dividing the current month's estimates of aggregate weekly payrolls by the corresponding 2007 annual average aggregate weekly payrolls. Aggregate payrolls estimates are the product of estimates of average hourly earnings, average weekly hours, and employment.

p Preliminary

**ESTABLISHMENT DATA**

**Table B-5. Employment of women on nonfarm payrolls by industry sector, seasonally adjusted**

Industry	Women employees (in thousands)				Percent of all employees			
	May 2012	Mar. 2013	Apr. 2013 <sup>p</sup>	May 2013 <sup>p</sup>	May 2012	Mar. 2013	Apr. 2013 <sup>p</sup>	May 2013 <sup>p</sup>
Total nonfarm.....	65,916	66,743	66,855	66,937	49.4	49.3	49.4	49.4
Total private.....	53,426	54,269	54,377	54,458	47.9	47.8	47.9	47.9
Goods-producing.....	4,089	4,103	4,107	4,112	22.2	22.0	22.0	22.1
Mining and logging.....	111	117	118	119	13.0	13.5	13.6	13.8
Construction.....	719	738	741	745	12.8	12.7	12.8	12.8
Manufacturing.....	3,259	3,248	3,248	3,248	27.3	27.1	27.1	27.1
Durable goods.....	1,732	1,732	1,734	1,734	23.2	23.1	23.1	23.1
Nondurable goods.....	1,527	1,516	1,514	1,514	34.2	33.9	33.9	34.0
Private service-providing.....	49,337	50,166	50,270	50,346	52.9	52.9	52.9	52.9
Trade, transportation, and utilities.....	10,244	10,445	10,476	10,491	40.2	40.5	40.5	40.6
Wholesale trade.....	1,702.6	1,702.0	1,702.5	1,703.8	30.0	29.7	29.7	29.6
Retail trade.....	7,380.7	7,562.4	7,589.3	7,599.4	49.7	50.3	50.4	50.3
Transportation and warehousing.....	1,023.0	1,043.9	1,046.0	1,049.5	23.2	23.4	23.4	23.5
Utilities.....	137.7	136.9	137.8	138.6	24.8	24.6	24.8	24.9
Information.....	1,080	1,072	1,067	1,071	40.3	39.7	39.6	39.7
Financial activities.....	4,519	4,540	4,546	4,538	58.1	57.8	57.8	57.6
Professional and business services.....	7,908	8,136	8,165	8,198	44.2	44.3	44.4	44.4
Education and health services.....	15,560	15,801	15,823	15,838	76.7	76.7	76.7	76.7
Leisure and hospitality.....	7,171	7,296	7,318	7,333	52.3	52.0	52.0	52.0
Other services.....	2,855	2,876	2,875	2,877	52.6	52.6	52.5	52.4
Government.....	12,490	12,474	12,478	12,479	57.0	57.1	57.1	57.1

p Preliminary

**ESTABLISHMENT DATA**

**Table B-6. Employment of production and nonsupervisory employees on private nonfarm payrolls by industry sector, seasonally adjusted<sup>1</sup>**

[In thousands]

Industry	May 2012	Mar. 2013	Apr. 2013 <sup>p</sup>	May 2013 <sup>p</sup>
Total private.....	92,207	93,688	93,813	93,978
Goods-producing.....	13,281	13,426	13,407	13,388
Mining and logging.....	651	642	638	635
Construction.....	4,221	4,382	4,379	4,386
Manufacturing.....	8,409	8,402	8,390	8,367
Durable goods.....	5,157	5,159	5,153	5,139
Nondurable goods.....	3,252	3,243	3,237	3,228
Private service-providing.....	78,926	80,262	80,406	80,590
Trade, transportation, and utilities.....	21,612	21,844	21,849	21,866
Wholesale trade.....	4,560.1	4,621.1	4,622.4	4,630.8
Retail trade.....	12,802.5	12,915.1	12,921.3	12,932.0
Transportation and warehousing.....	3,808.4	3,860.6	3,856.2	3,852.6
Utilities.....	440.5	447.4	448.8	450.1
Information.....	2,165	2,187	2,186	2,192
Financial activities.....	5,979	6,040	6,062	6,062
Professional and business services.....	14,739	15,191	15,234	15,303
Education and health services.....	17,799	18,047	18,076	18,101
Leisure and hospitality.....	12,097	12,386	12,427	12,487
Other services.....	4,535	4,567	4,572	4,579

<sup>1</sup> Data relate to production employees in mining and logging and manufacturing, construction employees in construction, and nonsupervisory employees in the service-providing industries. These groups account for approximately four-fifths of the total employment on private nonfarm payrolls.

<sup>p</sup> Preliminary

**ESTABLISHMENT DATA**

**Table B-7. Average weekly hours and overtime of production and nonsupervisory employees on private nonfarm payrolls by industry sector, seasonally adjusted<sup>1</sup>**

Industry	May 2012	Mar. 2013	Apr. 2013 <sup>p</sup>	May 2013 <sup>p</sup>
<b>AVERAGE WEEKLY HOURS</b>				
Total private.....	33.7	33.8	33.7	33.8
Goods-producing.....	41.0	41.3	41.3	41.3
Mining and logging.....	46.3	45.7	45.7	46.0
Construction.....	39.0	39.7	39.7	39.8
Manufacturing.....	41.6	41.8	41.8	41.8
Durable goods.....	42.0	42.3	42.1	42.2
Nondurable goods.....	40.9	41.2	41.2	41.2
Private service-providing.....	32.4	32.5	32.4	32.5
Trade, transportation, and utilities.....	33.7	33.8	33.6	33.8
Wholesale trade.....	38.6	38.8	38.6	38.8
Retail trade.....	30.5	30.3	30.0	30.3
Transportation and warehousing.....	38.0	38.8	38.6	38.5
Utilities.....	41.1	42.0	41.7	41.9
Information.....	35.8	35.7	35.7	35.6
Financial activities.....	36.6	36.7	36.7	36.7
Professional and business services.....	35.2	35.4	35.3	35.4
Education and health services.....	32.3	32.3	32.3	32.3
Leisure and hospitality.....	24.9	25.0	25.0	25.0
Other services.....	30.6	30.7	30.7	30.8
<b>AVERAGE OVERTIME HOURS</b>				
Manufacturing.....	4.2	4.4	4.3	4.2
Durable goods.....	4.4	4.4	4.3	4.2
Nondurable goods.....	3.9	4.3	4.3	4.3

<sup>1</sup> Data relate to production employees in mining and logging and manufacturing, construction employees in construction, and nonsupervisory employees in the service-providing industries. These groups account for approximately four-fifths of the total employment on private nonfarm payrolls.

p Preliminary

**ESTABLISHMENT DATA**

**Table B-8. Average hourly and weekly earnings of production and nonsupervisory employees on private nonfarm payrolls by industry sector, seasonally adjusted<sup>1</sup>**

Industry	Average hourly earnings				Average weekly earnings			
	May 2012	Mar. 2013	Apr. 2013 <sup>p</sup>	May 2013 <sup>p</sup>	May 2012	Mar. 2013	Apr. 2013 <sup>p</sup>	May 2013 <sup>p</sup>
Total private.....	\$19.70	\$20.04	\$20.07	\$20.08	\$ 663.89	\$ 677.35	\$ 676.36	\$ 678.70
Goods-producing.....	20.88	21.18	21.21	21.26	856.08	874.73	875.97	878.04
Mining and logging.....	25.68	26.41	26.68	27.23	1,188.98	1,206.94	1,219.28	1,252.58
Construction.....	23.93	24.25	24.30	24.28	933.27	962.73	964.71	966.34
Manufacturing.....	19.03	19.23	19.22	19.25	791.65	803.81	803.40	804.65
Durable goods.....	20.12	20.27	20.26	20.30	845.04	857.42	852.95	856.66
Nondurable goods.....	17.25	17.54	17.53	17.53	705.53	722.65	722.24	722.24
Private service-providing.....	19.45	19.79	19.82	19.83	630.18	643.18	642.17	644.48
Trade, transportation, and utilities.....	17.41	17.60	17.62	17.63	586.72	594.88	592.03	595.89
Wholesale trade.....	22.14	22.46	22.49	22.56	854.60	871.45	868.11	875.33
Retail trade.....	13.82	13.95	13.93	13.92	421.51	422.69	417.90	421.78
Transportation and warehousing.....	19.57	19.48	19.58	19.63	743.66	755.82	755.79	755.76
Utilities.....	31.46	32.07	32.09	32.10	1,293.01	1,346.94	1,338.15	1,344.99
Information.....	26.80	27.72	27.82	27.61	959.44	989.60	993.17	982.92
Financial activities.....	22.68	23.68	23.81	23.85	830.09	869.06	873.83	875.30
Professional and business services.....	23.19	23.58	23.57	23.60	816.29	834.73	832.02	835.44
Education and health services.....	21.03	21.31	21.34	21.34	679.27	688.31	689.28	689.28
Leisure and hospitality.....	11.61	11.74	11.74	11.76	289.09	293.50	293.50	294.00
Other services.....	17.54	17.78	17.81	17.80	536.72	545.85	546.77	548.24

<sup>1</sup> Data relate to production employees in mining and logging and manufacturing, construction employees in construction, and nonsupervisory employees in the service-providing industries. These groups account for approximately four-fifths of the total employment on private nonfarm payrolls.

p Preliminary

**ESTABLISHMENT DATA**

**Table B-9. Indexes of aggregate weekly hours and payrolls for production and nonsupervisory employees on private nonfarm payrolls by industry sector, seasonally adjusted<sup>1</sup>**

[2002=100]

Industry	Index of aggregate weekly hours <sup>2</sup>					Index of aggregate weekly payrolls <sup>3</sup>				
	May 2012	Mar. 2013	Apr. 2013 <sup>p</sup>	May 2013 <sup>p</sup>	Percent change from: Apr. 2013 - May 2013 <sup>p</sup>	May 2012	Mar. 2013	Apr. 2013 <sup>p</sup>	May 2013 <sup>p</sup>	Percent change from: Apr. 2013 - May 2013 <sup>p</sup>
Total private.....	103.7	105.7	105.5	106.0	0.5	136.4	141.4	141.4	142.2	0.6
Goods-producing.....	83.2	84.7	84.6	84.5	-0.1	106.4	109.9	109.9	110.0	0.1
Mining and logging.....	160.2	155.9	154.9	155.2	0.2	239.2	239.5	240.4	245.8	2.2
Construction.....	82.4	87.1	87.0	87.4	0.5	106.5	114.1	114.2	114.6	0.4
Manufacturing.....	80.3	80.6	80.5	80.3	-0.2	99.9	101.4	101.2	101.1	-0.1
Durable goods.....	81.4	82.0	81.5	81.5	0.0	102.2	103.8	103.1	103.3	0.2
Nondurable goods.....	78.4	78.7	78.6	78.4	-0.3	95.5	97.6	97.3	97.1	-0.2
Private service-providing.....	109.1	111.3	111.2	111.8	0.5	145.5	151.0	151.0	151.9	0.6
Trade, transportation, and utilities.....	101.5	102.9	102.3	103.0	0.7	126.1	129.2	128.6	129.6	0.8
Wholesale trade.....	103.7	105.6	105.1	105.8	0.7	135.2	139.7	139.2	140.6	1.0
Retail trade.....	98.8	99.1	98.1	99.2	1.1	117.1	118.4	117.1	118.3	1.0
Transportation and warehousing.....	108.9	112.8	112.0	111.7	-0.3	135.2	139.3	139.2	139.0	-0.1
Utilities.....	92.6	96.1	95.7	96.4	0.7	121.6	128.6	128.2	129.2	0.8
Information.....	88.5	89.1	89.1	89.1	0.0	117.4	122.3	122.7	121.7	-0.8
Financial activities.....	103.0	104.4	104.7	104.7	0.0	143.7	152.0	153.4	153.7	0.2
Professional and business services.....	116.3	120.5	120.5	121.4	0.7	160.5	169.1	169.0	170.5	0.9
Education and health services.....	124.0	125.7	125.9	126.1	0.2	171.5	176.2	176.7	176.9	0.1
Leisure and hospitality.....	110.3	113.4	113.8	114.3	0.4	145.5	151.2	151.7	152.7	0.7
Other services.....	97.3	98.3	98.4	98.9	0.5	124.4	127.4	127.7	128.3	0.5

1 Data relate to production employees in mining and logging and manufacturing, construction employees in construction, and nonsupervisory employees in the service-providing industries. These groups account for approximately four-fifths of the total employment on private nonfarm payrolls.

2 The indexes of aggregate weekly hours are calculated by dividing the current month's estimates of aggregate hours by the corresponding 2002 annual average aggregate hours. Aggregate hours estimates are the product of estimates of average weekly hours and employment.

3 The indexes of aggregate weekly payrolls are calculated by dividing the current month's estimates of aggregate weekly payrolls by the corresponding 2002 annual average aggregate weekly payrolls. Aggregate payrolls estimates are the product of estimates of average hourly earnings, average weekly hours, and employment.

p Preliminary