

Transmission of material in this release is embargoed until
8:30 a.m. (EDT), Friday, March 14, 2014

USDL-14-0392

Technical information: (202) 691-7705 • ppi-info@bls.gov • www.bls.gov/ppi
Media contact: (202) 691-5902 • PressOffice@bls.gov

PRODUCER PRICE INDEXES – FEBRUARY 2014

The Producer Price Index for final demand fell 0.1 percent in February, seasonally adjusted, the U.S. Bureau of Labor Statistics reported today. This decline followed advances of 0.2 percent in January and 0.1 percent in December. On an unadjusted basis, the index for final demand moved up 0.9 percent for the 12 months ended in February, the smallest 12-month rise since a 0.9-percent increase in May 2013. (See table A.)

In February, the 0.1-percent decrease in final demand prices can be traced to the index for final demand services, which fell 0.3 percent. In contrast, prices for final demand goods advanced 0.4 percent.

Within intermediate demand, the index for processed goods climbed 0.7 percent, prices for unprocessed goods jumped 5.7 percent, and the index for services rose 0.2 percent. (See tables B and C.)

Chart 1. One-month percent changes in selected PPI final demand price indexes, seasonally adjusted

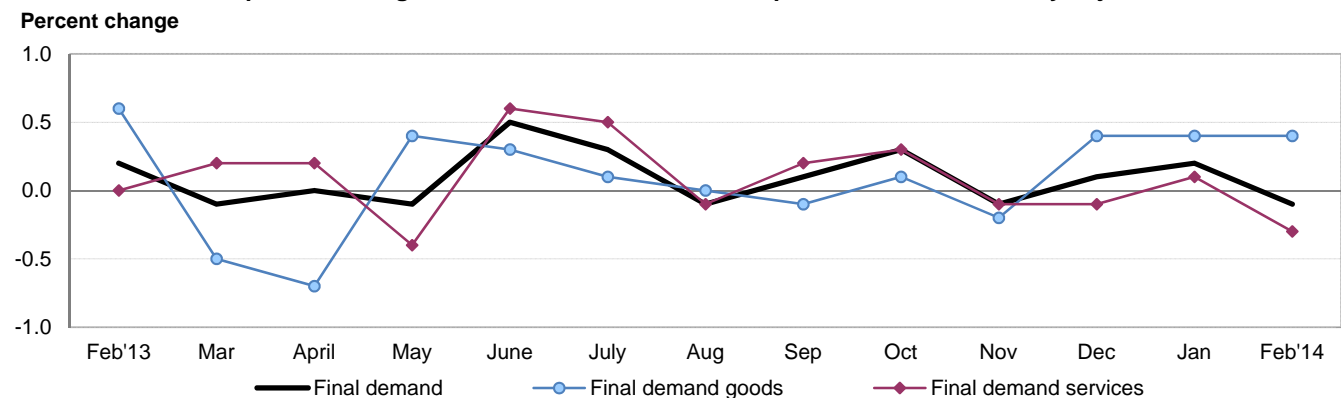


Chart 2. Twelve-month percent changes in selected PPI final demand price indexes, not seasonally adjusted

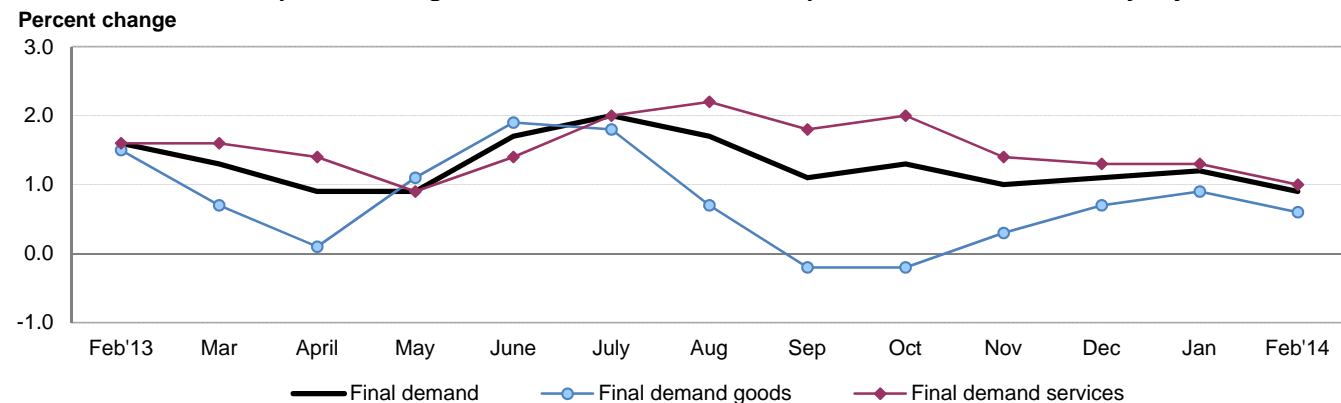


Table A. Monthly and 12-month percent changes in selected final demand price indexes, seasonally adjusted

Month	Total final demand	Final demand goods				Final demand services				Change in final demand from 12 months ago (unadj.)
		Total	Foods	Energy	Less foods and energy	Total	Trade	Transportation and warehousing	Other	
2013										
Feb.....	0.2	0.6	-0.8	2.9	0.3	0.0	-0.4	-0.1	0.3	1.6
Mar.....	-0.1	-0.5	0.9	-3.8	0.1	0.2	0.2	-0.1	0.1	1.3
Apr.....	0.0	-0.7	-1.3	-2.4	0.0	0.2	0.6	-0.7	0.3	0.9
May.....	-0.1	0.4	1.1	1.2	0.1	-0.4	-1.4	0.1	0.1	0.9
June.....	0.5	0.3	-0.3	1.5	0.1	0.6	1.0	0.8	0.3	1.7
July.....	0.3	0.1	0.3	-0.1	0.0	0.5	1.0	0.7	0.0	2.0
Aug.....	-0.1	0.0	-0.6	0.7	0.0	-0.1	-0.6	0.1	0.2	1.7
Sept.....	0.1	-0.1	-0.7	0.2	0.0	0.2	0.4	-0.1	0.1	1.1
Oct. ¹	0.3	0.1	0.3	0.0	0.0	0.3	0.2	0.3	0.3	1.3
Nov. ¹	-0.1	-0.2	-0.3	-0.9	0.1	-0.1	0.3	-0.5	-0.1	1.0
Dec.....	0.1	0.4	-0.4	1.5	0.3	-0.1	-0.8	1.2	0.2	1.1
2014										
Jan.....	0.2	0.4	1.0	0.3	0.4	0.1	0.1	-1.1	0.1	1.2
Feb.....	-0.1	0.4	0.6	0.5	0.2	-0.3	-1.0	-0.2	0.1	0.9

¹ Some of the figures shown above and elsewhere in this release may differ from those previously reported because data for October 2013 have been revised to reflect the availability of late reports and corrections by respondents.

Final Demand

(Final demand includes goods, services, and construction which are sold for personal consumption, capital investment, government purchases, and export. See table 4 for product detail.)

Final demand services: The index for final demand services moved down 0.3 percent in February, the largest decrease since a 0.4-percent decline in May 2013. Most of the February drop can be traced to margins for final demand trade services, which fell 1.0 percent. (Trade indexes measure changes in margins received by wholesalers and retailers.) Prices for final demand transportation and warehousing services declined 0.2 percent. Conversely, the index for final demand services less trade, transportation, and warehousing inched up 0.1 percent in February.

Product detail: Over 80 percent of the February decrease in the index for final demand services can be attributed to margins for apparel, footwear, and accessories retailing, which fell 9.3 percent. The indexes for airline passenger services; machinery, equipment, and related parts and supplies wholesaling; food and alcohol retailing; automotive fuels and lubricants retailing; and brokerage compensation for residential property transactions also declined. In contrast, the indexes for both inpatient and outpatient hospital care; health, beauty care, and optical goods retailing; and the U.S. Postal Service moved higher in February. (See table 4.)

Final demand goods: Prices for final demand goods climbed 0.4 percent in February, the same rate of advance as in each of the prior two months. Leading the broad-based increase in February, the index for final demand goods less foods and energy rose 0.2 percent. Prices for final demand foods and final demand energy also moved higher, 0.6 percent and 0.5 percent, respectively.

Product detail: A major factor in the February advance in the index for final demand goods was prices for pharmaceutical preparations, which rose 0.9 percent. The indexes for dairy products, residential natural gas, liquefied petroleum gas, soft drinks, and eggs for fresh use also increased. Conversely, gasoline prices fell 1.1 percent in February. The indexes for processed poultry and for soaps and detergents also decreased.

Special grouping, Final demand less foods, energy, and trade: Prices for final demand less foods, energy, and trade services inched up 0.1 percent in February following advances of 0.1 percent in January and 0.3 percent in December. (The index for final demand less foods, energy, and trade services represents about two-thirds of final demand.)

Special grouping, Finished goods: The index for finished goods increased 0.4 percent in February. (The finished goods index, which excludes the weight for government purchases and exports, represents about two-thirds of final demand goods. The finished goods index represents about one-quarter of overall final demand.) In February, the broad-based advance was led by the index for finished consumer foods, which climbed 0.7 percent. Prices for finished consumer energy goods and for finished goods less foods and energy increased 0.5 percent and 0.1 percent, respectively. Within finished goods, higher prices for dairy products, residential natural gas, liquefied petroleum gas, pharmaceutical preparations, soft drinks, and eggs for fresh use outweighed lower prices for gasoline, processed poultry, and soaps and detergents.

Intermediate Demand

(Intermediate demand includes goods, services, and maintenance and repair construction sold to businesses, excluding capital investment. BLS publishes two parallel treatments of intermediate demand, each constructed from the identical set of commodity price indexes. The first treatment organizes commodities according to commodity type, and the second organizes commodities using a stage-based, production flow model. See the technical note for more information.)

Intermediate Demand by Commodity Type

Processed goods for intermediate demand: The index for processed goods for intermediate demand moved up 0.7 percent in February, the largest advance since a 1.0-percent increase in February 2013. The broad-based rise in February 2014 was led by the index for processed materials less foods and energy, which climbed 0.6 percent. Prices for processed energy goods and for processed foods and feeds increased 1.0 percent and 1.1 percent, respectively. For the 12 months ended in February, the index for processed goods for intermediate demand was unchanged. (See table B.)

Product detail: In February, a 4.8-percent advance in prices for primary basic organic chemicals accounted for almost a quarter of the increase in the index for processed goods for intermediate demand. Prices also rose for utility natural gas, diesel fuel, dairy products, plastic resins and materials, and liquefied petroleum gas. In contrast, the index for processed poultry declined 3.4 percent. Prices for gasoline and for structural, architectural, and pre-engineered metal products also decreased in February. (See table 5.)

Table B. Monthly and 12-month percent changes in selected intermediate demand price indexes for goods by commodity type, seasonally adjusted

Month	Processed goods for intermediate demand					Unprocessed goods for intermediate demand				
	Total	Foods and feeds	Energy goods	Less foods and energy	Total, change from 12 months ago (unadj.)	Total	Food-stuffs and feed-stuffs	Energy materials	Nonfood materials less energy	Total, change from 12 months ago (unadj.)
2013										
Feb.....	1.0	0.0	2.9	0.6	1.3	-0.7	-2.1	0.7	-0.7	0.4
Mar.....	-1.1	0.3	-4.6	-0.1	-0.9	-0.5	1.4	-3.2	0.8	0.0
Apr.....	-0.6	-1.0	-2.0	-0.2	-1.1	-0.3	-1.9	3.1	-2.4	3.0
May.....	0.1	1.2	0.5	-0.2	-0.2	2.0	1.9	4.5	-1.7	7.5
June.....	0.3	0.1	1.0	0.0	0.8	-0.6	-1.3	0.0	-0.8	10.7
July.....	0.0	1.6	0.3	-0.2	1.3	0.2	-0.7	0.9	-0.1	8.5
Aug.....	0.0	-2.3	0.6	0.2	0.4	-1.4	-3.4	-0.5	0.0	1.9
Sept.....	0.1	0.5	0.3	-0.1	-0.6	-0.1	-0.7	1.0	-1.2	0.5
Oct. ¹	-0.1	-1.8	0.0	0.1	-0.8	-0.5	1.1	-1.8	-0.6	-0.5
Nov. ¹	-0.4	-1.2	-1.3	-0.1	-0.5	-2.0	-0.7	-4.9	1.2	-3.3
Dec.....	0.5	0.4	1.4	0.2	0.0	2.3	-0.5	5.8	0.6	-2.1
2014										
Jan.....	0.6	1.7	1.4	0.3	0.3	0.9	3.5	-1.5	1.4	-0.9
Feb.....	0.7	1.1	1.0	0.6	0.0	5.7	0.5	14.7	-0.7	5.4

¹ Some of the figures shown above and elsewhere in this release may differ from those previously reported because data for October 2013 have been revised to reflect the availability of late reports and corrections by respondents.

Unprocessed goods for intermediate demand: The index for unprocessed goods for intermediate demand jumped 5.7 percent in February, the largest advance since an 8.1-percent increase in January 2010. Leading the February rise, prices for unprocessed energy materials surged 14.7 percent. The index for unprocessed foodstuffs and feedstuffs moved up 0.5 percent. Conversely, prices for unprocessed nonfood materials less energy declined 0.7 percent. For the 12 months ended in February, the index for unprocessed goods for intermediate demand rose 5.4 percent, the largest 12-month increase since an 8.5-percent advance in July 2013.

Product detail: A 31.5-percent jump in the index for natural gas accounted for almost 60 percent of the increase in prices for unprocessed goods for intermediate demand. The indexes for crude petroleum, raw milk, grains, ungraded chicken eggs, and gold ores also advanced in February. In contrast, prices for copper base scrap fell 3.9 percent. The indexes for slaughter poultry and for prepared bituminous coal and lignite also moved down in February.

Services for intermediate demand: The index for services for intermediate demand moved up 0.2 percent in February following no change in January. Prices for transportation and warehousing services for intermediate demand increased 1.0 percent. Conversely, the index for trade services for intermediate demand edged down 0.1 percent. Prices for services less trade, transportation, and warehousing for intermediate demand were unchanged. For the 12 months ended in February, the index for services for intermediate demand advanced 1.2 percent. (See table C.)

Product detail: Leading the February advance in the index for services for intermediate demand, prices for courier, messenger, and U.S. postal services rose 1.8 percent. The indexes for chemicals and allied products wholesaling; staffing services; building materials, paint, and hardware wholesaling; legal services; and services related to securities brokerage and dealing also increased. In contrast, margins for parts and supplies for machinery and equipment wholesaling fell 0.6 percent. The indexes for loan services (partial) and transportation of passengers (partial) also declined.

Table C. Monthly and 12-month percent changes in selected intermediate demand price indexes for services by commodity type, seasonally adjusted

Month	Services for intermediate demand				Total, change from 12 months ago (unadj.)
	Total	Trade	Transportation and warehousing	Other	
2013					
Feb.....	-0.1	-1.4	0.6	0.2	2.0
Mar.....	0.1	1.4	0.0	-0.4	2.2
Apr.....	0.4	0.2	-0.1	0.7	2.4
May.....	-0.5	-2.1	-0.1	-0.1	1.7
June.....	0.4	0.4	0.3	0.3	2.2
July.....	0.1	0.6	0.4	0.0	1.9
Aug.....	0.2	-0.3	0.3	0.3	2.1
Sept.....	0.1	0.7	0.2	-0.1	1.8
Oct. ¹	0.2	-0.3	0.3	0.2	1.2
Nov. ¹	0.0	0.5	-0.1	-0.1	0.7
Dec.....	0.1	-0.3	0.3	0.1	1.0
2014					
Jan.....	0.0	-0.3	-0.3	0.3	0.9
Feb.....	0.2	-0.1	1.0	0.0	1.2

¹ Some of the figures shown above and elsewhere in this release may differ from those previously reported because data for October 2013 have been revised to reflect the availability of late reports and corrections by respondents.

Intermediate Demand by Production Flow

Stage 4 intermediate demand (*The stage 4 intermediate demand index measures price changes for products purchased by industries that primarily produce output sold to final demand.*): The index for stage 4 intermediate demand moved up 0.3 percent in February after a 0.2-percent rise a month earlier. In February, the index for total goods inputs to stage 4 intermediate demand rose 0.4 percent, and prices for total services inputs advanced 0.2 percent. (See table D.) Increases in the indexes for dairy products; courier, messenger, and U.S. postal services; diesel fuel; building materials, paint, and hardware wholesaling; staffing services; and ready-mix concrete outweighed decreases in prices for loan services (partial), unprocessed finfish, and gasoline. For the 12 months ended in February, the index for stage 4 intermediate demand advanced 0.7 percent. (See table 6.)

Stage 3 intermediate demand (*The stage 3 intermediate demand index measures price changes for products purchased by industries that primarily produce output sold to industries classified in stage 4.*): The index for stage 3 intermediate demand increased 0.6 percent in February following a 1.0-percent jump in January. In February, prices for total goods inputs to stage 3 intermediate demand climbed 0.8 percent, and the index for total services inputs rose 0.4 percent. Higher prices for raw milk; natural gas; couriers, messenger, and U.S. postal services; plastic resins and materials; utility natural gas; and diesel fuel outweighed lower prices for slaughter poultry, unprocessed finfish, and loan services (partial). For the 12 months ended in February, the index for stage 3 intermediate demand rose 1.4 percent, the largest advance since a 2.0-percent increase for the 12 months ended July 2013.

Table D. Monthly percent changes in selected intermediate demand price indexes by production flow, seasonally adjusted

Month	Stage 4 intermediate demand			Stage 3 intermediate demand			Stage 2 intermediate demand			Stage 1 intermediate demand		
	Total	Goods inputs	Services inputs	Total	Goods inputs	Services inputs	Total	Goods inputs	Services inputs	Total	Goods inputs	Services inputs
2013												
Feb.....	0.3	0.7	-0.2	0.4	0.5	0.5	0.3	0.7	-0.3	0.7	1.3	-0.1
Mar.....	-0.4	-0.7	0.0	-0.6	-0.8	-0.4	-1.0	-1.9	0.3	-0.5	-1.4	0.7
Apr.....	0.0	-0.5	0.5	0.1	-0.3	0.4	0.3	0.1	0.5	-0.8	-1.7	0.4
May.....	-0.2	0.1	-0.4	0.0	0.4	-0.4	0.5	1.7	-1.1	-0.3	-0.2	-0.2
June.....	0.3	0.2	0.3	0.2	0.0	0.4	0.2	0.1	0.4	0.2	0.3	0.1
July.....	0.2	0.1	0.2	-0.3	-0.3	-0.2	0.4	0.6	0.2	0.4	0.0	0.6
Aug.....	0.1	0.1	0.3	0.1	-0.1	0.3	-0.4	-0.9	0.2	0.3	0.4	0.4
Sept.....	0.0	0.0	0.0	0.1	0.1	0.1	0.3	0.3	0.3	-0.2	-0.3	-0.1
Oct. ¹	0.2	0.0	0.3	0.2	0.4	-0.1	-0.9	-1.4	-0.2	-0.1	-0.4	0.5
Nov. ¹	-0.2	-0.3	0.0	-0.1	-0.3	0.0	-1.5	-2.7	0.1	0.3	0.3	0.2
Dec.....	0.3	0.4	0.2	0.1	0.3	0.0	1.5	2.9	-0.2	0.4	0.7	0.2
2014												
Jan.....	0.2	0.4	-0.1	1.0	1.5	0.3	0.1	-0.1	0.4	1.0	1.8	-0.2
Feb.....	0.3	0.4	0.2	0.6	0.8	0.4	4.2	7.0	0.2	0.4	0.7	0.2

¹ Some of the figures shown above and elsewhere in this release may differ from those previously reported because data for October 2013 have been revised to reflect the availability of late reports and corrections by respondents.

Stage 2 intermediate demand (*The stage 2 intermediate demand index measures price changes for products purchased by industries that primarily produce output sold to industries classified in stage 3.*): The index for stage 2 intermediate demand jumped 4.2 percent in February, the largest increase since a 4.6-percent rise in January 2010. In February, prices for total goods inputs to stage 2 intermediate demand climbed 7.0 percent, and the index for total services inputs moved up 0.2 percent. Advances in the indexes for gas fuels, crude petroleum, primary basic organic chemicals, chemicals and allied products wholesaling, grains, and plastic resins and materials outweighed falling prices for loan services (partial), iron and steel scrap, and cellular phone and other wireless telecommunication services. For the 12 months ended in February, the index for stage 2 intermediate demand climbed 3.7 percent, the largest advance since a 5.6-percent increase for the 12 months ended July 2013.

Stage 1 intermediate demand (*The stage 1 intermediate demand index measures price changes for products purchased by industries that primarily produce output sold to industries classified in stage 2.*): The index for stage 1 intermediate demand rose 0.4 percent in February compared with a 1.0-percent jump in the prior month. In February, the index for total goods inputs to stage 1 intermediate demand advanced 0.7 percent, and prices for total services inputs moved up 0.2 percent. Increases in the indexes for primary basic organic chemicals, electric power, utility natural gas, chemicals and allied products wholesaling, gas fuels, and diesel fuel outweighed lower prices for iron and steel scrap, copper base scrap, and guestroom rental. For the 12 months ended in February, the index for stage 1 intermediate demand rose 1.2 percent.

The Producer Price Index for March 2014 is scheduled to be released on Friday, April 11, 2014 at 8:30 a.m. (EDT).

Technical Note

Brief Explanation of Producer Price Indexes

The Producer Price Index (PPI) of the Bureau of Labor Statistics (BLS) is a family of indexes that measures the average change over time in prices received (price changes) by producers for domestically produced goods, services, and construction. PPIs measure price change from the perspective of the seller. This contrasts with other measures, such as the Consumer Price Index (CPI). CPIs measure price change from the purchaser's perspective.

More than 10,000 PPIs for individual products and groups of products are released each month. PPIs are available for the products of virtually every industry in the mining and manufacturing sectors. Over time, new PPIs have been introduced for products of industries in the services and construction sectors of the U.S. economy. As of January 2013, the PPI covered about 70 percent of services as measured by 2007 Census revenue, and 34 percent of construction.

More than 100,000 price quotations per month are organized into three sets of PPIs: (1) Final demand-Intermediate demand (FD-ID) indexes, (2) commodity indexes, and (3) indexes for the net output of industries and their products. The FD-ID structure organizes products by class of buyer and degree of fabrication as well as by stage of production. The commodity structure organizes products by similarity of end use or product type. The entire output of various industries is sampled to derive price indexes for the net output of industries and their products.

Final Demand–Intermediate Demand Indexes

The PPI FD-ID structure measures price change for goods, services, and construction sold to final demand and to intermediate demand. The FD-ID system replaced the PPI stage-of-processing (SOP) system as PPI's primary aggregation model with the release of data for January 2014. The FD-ID model expands coverage beyond that of the SOP system through the addition of services, construction, exports, and government purchases.

Compared with finished goods under the SOP system, the PPI for final demand goods includes nearly a 50 percent expansion of coverage. This increase can be traced to the addition of government purchases and exports. For overall final demand, expansion to include final demand services represents an even larger increase in coverage. In December 2012, final demand goods were about 34.5 percent of overall final demand, final demand services were roughly 63.5 percent, and final demand construction was about 2.0 percent of final demand. Within intermediate demand, coverage of services for intermediate demand resulted in about a 45 percent increase in coverage of the intermediate demand portion of the economy.

FD-ID indexes are constructed from commodity-based producer output price indexes. Commodities are allocated to aggregate indexes primarily based on the type of buyer. The main source of data used to determine the type of buyer is the "Use of commodities by industries, before redefinition," table

from the Benchmark Input-Output Accounts of the U.S. In many cases, the same commodity is purchased by different types of buyers. As a result, commodities are often included in several FD-ID indexes. For example, regular gasoline is purchased for personal consumption, export, government use, and business use. The PPI program publishes only one commodity index for regular gasoline (wpu057104), reflecting sales to all types of buyers, and this index is used in all aggregations regardless of whether the gasoline is sold for personal consumption, as an export, to government, or to businesses. Proportions based on BEA "Use of Commodities" data are used to allocate the correct portion of the total weight of gasoline to each use category. In cases when buyer type is an important price determining characteristic, indexes are created based on specific buyer type. For example, within the PPI category for loan services, separate indexes for consumer loans and business loans were constructed. For more information relating to the FD-ID structure, see "A new, experimental system of indexes from the PPI program" in the February 2011 *Monthly Labor Review*.

Final Demand: The final demand portion of the FD-ID structure measures price change for commodities sold for personal consumption, capital investment, government, and export. The system is composed of six main price indexes: final demand goods; final demand trade services; final demand transportation and warehousing services; final demand services less trade, transportation, and warehousing; final demand construction; and overall final demand.

The final demand goods index measures price change for both unprocessed and processed goods sold to final demand. Fresh fruits sold to consumers and computers sold for capital investment are examples of transactions included in the final demand goods price index. The final demand trade services index measures price change for the retailing and wholesaling of merchandise sold to final demand, generally without transformation. (Trade indexes measure changes in margins received by wholesalers and retailers.) The final demand transportation and warehousing services index tracks price change for transportation of passengers, as well as, transportation of cargo sold to final demand, and also includes prices for warehousing and storage of goods sold to final demand. The final demand services less trade, transportation, and warehousing index measures price change for all services other than trade and transportation sold to final demand. Publishing, banking, lodging, and health care are examples of these services. The final demand construction index tracks price change for new construction, as well as maintenance and repair construction sold to final demand. Construction of office buildings is an example of a commodity that would be included in the final demand construction index. Lastly, the overall final demand index tracks price change for all types of commodities sold to final demand by combining the five final demand component indexes described above.

Intermediate Demand: The intermediate demand portion of the FD-ID system tracks price change for goods, services, and construction products sold to businesses as inputs to

production, excluding capital investment. The system includes two parallel treatments of intermediate demand. The first treatment organizes intermediate demand commodities by type. The second organizes intermediate demand commodities into production stages, with the explicit goal of developing a forward-flow model of production and price change.

The intermediate demand by commodity type portion of the system organizes commodities by similarity of product. The system is composed of six main price indexes: unprocessed goods for intermediate demand; processed goods for intermediate demand; intermediate demand trade services; intermediate demand transportation and warehousing services; intermediate demand services less trade, transportation, and warehousing; and intermediate demand construction.

The unprocessed goods for intermediate demand price index measures price change for goods sold to businesses as inputs to production that have undergone no fabrication. Crude petroleum sold to refineries is an example of an unprocessed good sold to intermediate demand. The processed goods for intermediate demand index tracks price change for fabricated goods sold as business inputs. Examples include car parts sold to car manufacturers and gasoline sold to trucking companies. The index for trade services for intermediate demand measures price change for the services of retailing and wholesaling goods purchased by businesses as inputs to production. The intermediate demand transportation and warehousing services index measures price change for business travel, as well as, transportation and warehousing of cargo sold to intermediate demand. The intermediate demand services less trade, transportation, and warehousing index measures price change for services other than trade, transportation, and warehousing sold as inputs to production. Legal and accounting services purchased by businesses are examples of intermediate demand services excluding trade, transportation, and warehousing. Finally, the construction for intermediate demand index measures price change for construction purchased by firms as inputs to production. The index for construction for intermediate demand tracks price change for maintenance and repair construction purchased by firms.

The production flow treatment of intermediate demand is a stage-based system of price indexes. These indexes can be used to study price transmission across stages of production and final demand. This system is constructed in a manner that maximizes forward flow of production between stages, while minimizing back-flow of production. The production flow treatment contains four main indexes: intermediate demand stage 1, intermediate demand stage 2, intermediate demand stage 3, and intermediate demand stage 4.

Indexes for the four stages were developed by first assigning each industry in the economy to one of four stages of production, where industries assigned to the fourth stage primarily produce output consumed as final demand, industries in the third stage primarily produce output consumed by stage 4 industries, industries assigned to the second stage primarily produce output consumed by stage 3 industries, and industries assigned to the first stage produce output primarily consumed by stage 2 industries. The four indexes then track prices for the net inputs consumed by

industries in each of the four stages of production. The stage 4 intermediate demand index, for example, tracks price change for inputs consumed, but not produced, by industries included in the fourth stage of production. Hence, the index tracks price change in inputs to industries that primarily produce final demand commodities (stage 4 producers primarily produce commodities sold to final demand).

Examples of heavily weighted goods-producing industries in stage 4 include the manufacture of light trucks and utility vehicles, automobiles, and pharmaceuticals. Retail trade, food service and drinking places, and hospitals are examples of heavily weighted service industries included in stage 4. Stage 4 also includes all new construction industries. Examples of goods consumed by stage 4 industries include motor vehicle parts, commercial electric power, plastic construction products, biological products, and beef and veal. Engineering services, machinery and equipment wholesaling, long distance motor carrying, and legal services constitute examples of services consumed by stage 4 industries.

Examples of highly weighted goods-producing industries included in stage 3 are motor vehicle parts manufacturing, animal (except poultry) slaughtering and processing, and semiconductor manufacturing. Services industries classified in stage 3 include wholesale trade; insurance carriers; architecture, engineering, and related services; and hotels and motels. Examples of goods consumed by stage 3 industries include slaughter steers and heifers, industrial electric power, and hot rolled steel bars, plates, and structural shapes. Services commonly consumed by stage 3 industries include commissions from sales of property and casualty insurance, business loans, temporary help services, and administrative and general management consulting services.

Petroleum refineries; electricity generation, transmission, and distribution; natural gas distribution; cattle ranching and farming; and plastic materials and resin manufacturing are among the goods-based industries assigned to stage 2. Services industries that are heavily weighted in stage 2 include management of companies and enterprises; non-depository credit intermediation; insurance agencies and brokerages; and services to buildings and dwellings. Goods commonly purchased by stage 2 industries include crude oil, natural gas, formula feeds, and primary basic organic chemicals. Services that are heavily weighted in the intermediate demand stage 2 index are legal services, business loans, and cellular phone and other wireless telecommunication.

Goods producing industries in stage 1 include oil and gas extraction, paper mills, and grain farming. Real estate, legal services, and advertising services are examples of highly weighted services industries included in stage 1. Examples of goods consumed by stage 1 industries are commercial and industrial electric power and gasoline. Services commonly consumed by stage 1 industries include solid waste collection, chemicals and allied products wholesaling, and guestroom or unit rental. It should be noted that all inputs purchased by stage 1 industries are by definition produced either within stage 1 or by latter stages of processing, leaving stage 1 less useful for price transmission analysis. For additional information on industry stage assignments, see <http://www.bls.gov/ppi/industryflowstage.htm>.

Comparing the PPI with CPI

Although some data users utilize the PPI as a potential indicator of the Consumer Price Index (CPI), there are many reasons why the PPI and the CPI may diverge. The scope of the personal consumption portion of the PPI includes all marketable output sold by domestic producers for households. The scope of the CPI includes goods and services provided by business or government, where explicit user charges are paid by consumers. For example, the most heavily weighted item in the CPI, owners' equivalent rent, is excluded from the PPI. The scope of the CPI includes imports. The PPI excludes imports. The CPI only includes components of personal consumption directly paid for by the consumers, while the PPI includes components of personal consumption that may not be paid for by consumers. For example, the PPI includes medical services paid for by third parties. In contrast to CPI, PPI does not completely cover services. PPIs exclude taxes, since they do not represent producer revenue. Conversely, sales and other taxes paid by consumers are part of household expenditure and are included in the CPI. Additional technical differences between PPI and CPI also exist. For more information see "Comparing new final demand producer price indexes with other Government price indexes," *Monthly Labor Review*, January 2014, at <http://www.bls.gov/opub/mlr/>.

Commodity Indexes

The commodity classification of the PPI organizes goods, services, and construction by similarity of product or end use, disregarding industry of origin. With the release of data for July 2009, PPI expanded its commodity structure to include indexes for services and construction products. Prior to this date, the PPI commodity structure only included products from goods producing sectors. Table 9 of the *PPI Detailed Report* includes data for commodity indexes, organized in a hierarchal structure, including major groupings, subgroups, product classes, sub-product classes, and individual items.

Industry Net-Output Price Indexes

PPIs for the net output of industries and their products are grouped according to the North American Industry Classification System (NAICS). Prior to the release of January 2004, industry-based PPIs were published according to the Standard Industrial Classification (SIC) system. Industry price indexes are compatible with other economic time series organized by industry, such as data on employment, wages, and productivity. Table 11 of the *PPI Detailed Report* includes data for NAICS industries and industry groups (3-, 4-, 5-, and 6-digit codes), Census product classes (7- and 8-digit codes), products (9-digit codes), more detailed sub-products (11-digit codes), and, for some industries, indexes for other sources of revenue.

Indexes may represent one of three kinds of product categories. Every industry has primary product indexes that show changes in prices received by establishments classified in the industry for products made primarily, but not necessarily exclusively, by that industry. The industry classification of an establishment is determined by which products make up a plurality of its total shipment value. In

addition, most industries have secondary product indexes that show changes in prices received by establishments for products chiefly made in some other industry. Some industries have miscellaneous receipts indexes that track price changes for other sources of revenue received by establishments within the industry that are not derived from sales of their products; for example, resales of purchased materials, or revenues from parking lots owned by a manufacturing plant.

Data Collection

PPIs are constructed using selling prices reported by establishments of all sizes, selected by probability sampling, with the probability of selection proportionate to size. Individual items and transaction terms also are chosen by probability proportionate to size. BLS strongly encourages cooperating companies to supply actual transaction prices at the time of shipment to minimize the use of list prices. Prices submitted by survey respondents are effective on the Tuesday of the week containing the 13th day of the month. The survey is conducted via Internet, mail, and fax.

Price data are provided on a voluntary and confidential basis; only sworn BLS employees are allowed access to individual company price reports. BLS publishes price indexes instead of actual prices. All PPIs are subject to revision 4 months after original publication to reflect the availability of late reports and corrections by respondents.

BLS periodically updates the PPI sample of survey respondents to better reflect current conditions when the structure, membership, technology, or product mix of an industry shifts significantly and to spread reporting burden among smaller firms. Results of these resampling efforts are incorporated into the PPI with the release of data for January and July.

As part of an ongoing effort to expand coverage to sectors of the economy other than mining and manufacturing, an increasing number of service and construction sector industries have been introduced into the PPI. The following list of industries introduced since the mid-1990s includes the month and year in which an article describing the industry's content appeared in the *PPI Detailed Report*.

Service and construction sector industries introduced into the Producer Price Index, by SIC or NAICS code and the *PPI Detailed Report* that announces their introduction

Title	Code	<i>PPI Detailed Report Issue</i>
	SIC	
Wireless telecommunications	4812	July 1999
Telephone communications, except radio telephone	4813	July 1995
Television broadcasting	4833	July 2002
Grocery stores	5411	July 2000
Meat and fish (seafood) markets	5421	July 2000
Fruit and vegetable markets	5431	July 2000
Candy, nut, and confectionery stores ...	5441	July 2000
Retail bakeries	5461	July 2000
Miscellaneous food stores	5499	July 2000
New car dealers	5511	July 2000
Gasoline service stations	5541	January 2002

Title	Code	PPI Detailed Report Issue
SIC		
Boat dealers	5551	January 2002
Recreational vehicle dealers	5561	January 2002
Miscellaneous retail	59	January 2001
Security brokers, dealers, and investment bankers	6211	January 2001
Investment advice	6282	January 2003
Life insurance carriers	6311	January 1999
Property and casualty insurance	6331	July 1998
Insurance agencies and brokerages	6412	January 2003
Operators and lessors of nonresidential buildings	6512	January 1996
Real estate agents and managers	6531	January 1996
Prepackaged software	7372	January 1998
Data processing services	7374	January 2002
Home health care services	8082	January 1997
Legal services	8111	January 1997
Engineering design, analysis, and consulting services	8711	January 1997
Architectural design, analysis, and consulting services	8712	January 1997
Premiums for property and casualty insurance	9331	July 1998
NAICS		
New Industrial building construction	236211	January 2008
New warehouse building construction ..	236221	July 2005
New school construction	236222	July 2006
New office construction	236223	January 2007
New health care building construction...	236224	January 2013
Concrete contractors, nonresidential building work	23811X	July 2008
Roofing contractors, nonresidential building work	23816X	July 2008
Electrical contractors, nonresidential building work	23821X	July 2008
Plumbing / HVAC contractors, nonresidential building work	23822X	July 2008
Merchant wholesalers, durable goods ..	423	July 2005
Merchant wholesalers, nondurable goods	424	July 2005
Wholesale trade agents and brokers ...	425120	July 2005
Electronics and appliance stores	443	January 2004
Building material and garden equipment and supplies dealers.....	444	January 2004
Sporting goods, hobby, book, and music stores	451	January 2004
General merchandise stores	452	January 2004
Miscellaneous store retailers	453	January 2004
Internet service providers	518111	July 2005
Internet publishing and web search portals	519130	January 2010
Commercial banking	522110	January 2005
Savings institutions	522120	January 2005
Direct health and medical insurance carriers	524114	July 2004
Construction, mining, and forestry machinery and equipment rental and leasing	532412	January 2005
Management consulting services	541610	January 2007

Title	Code	PPI Detailed Report Issue
NAICS		
Security guards and patrol services	561612	July 2005
Computer training	611420	July 2007
Offices of dentists	621210	January 2011
Blood and organ banks	621991	January 2007
Amusement and theme parks	713110	July 2006
Golf courses and country clubs	713910	July 2006
Fitness and recreational sports centers .	713940	July 2005
Commercial machinery repair and maintenance.....	811310	July 2007

Weights

Weights for most commodity groupings of the PPI, as well as, weights for commodity-based aggregate indexes calculated from commodity groupings, such as FD-ID indexes, currently reflect 2007 values of shipments as reported in the *Census of Manufactures* and other sources. From January 2007 to December 2011, PPI weights were derived from 2002 shipment values. Industry indexes now are calculated under the 2012 NAICS structure utilizing 2007 value of shipment weights and 2002 net output ratios. The periodic update of the value weights used to calculate the PPI is done to more accurately reflect changes in production and marketing patterns in the economy.

Net output values of shipments are used as weights for industry indexes. Net output values refer to the value of shipments from establishments within the industry to buyers outside the industry. However, weights for commodity indexes are based on gross shipment values, including values of shipments between establishments within the same industry. As a result, broad commodity grouping indexes, such as the PPI for All Commodities (which is composed of major commodity groupings 01 through 15), are affected by the multiple counting of price change at successive stages of processing, which can lead to exaggerated or misleading signals about inflation. The intermediate demand by commodity type FD-ID indexes partially correct for this defect, but industry indexes, final demand FD-ID indexes, and intermediate demand by production flow FD-ID indexes consistently correct for this at all levels of aggregation. Therefore, industry and FD-ID indexes are more appropriate than broad commodity groupings for analysis of general price trends.

Price Index Reference Base

Effective with publication of January 1988 data, many important PPI series (including most commodity groups and individual items) were placed on a new reference base, 1982 = 100. From 1971 through 1987, the standard reference base for most PPI series was 1967 = 100. Except for rounding differences, the shift to the new reference base did not alter any previously published percent changes for affected PPI series. (See "Calculating Index Changes," below.) The 1982 reference base is not used for commodity indexes with a base

later than December 1981 or for industry net output indexes and their products. The FD-ID indexes typically have a reference base of November 2009 = 100.

For further information on the underlying concepts and methodology of the Producer Price Index, see chapter 14, “Producer Prices,” in the *BLS Handbook of Methods*. This chapter can be downloaded from the BLS Web site at www.bls.gov/opus/hom/homch14.htm.

Calculating Index Changes

Each PPI measures price changes from a reference period that equals 100.0. An increase of 5.5 percent from the reference period in the Final Demand Goods Price Index, for example, is shown as 105.5. This change also can be expressed in dollars, as follows: prices received by domestic producers of a sample of final demand goods have risen from \$100 in November 2009 to \$105.50. Likewise, a current index of 90.0 would indicate that prices received by producers of final demand goods are 10 percent lower than they were in November 2009.

Movements of price indexes from one month to another are usually expressed as percent changes, rather than as changes in index points. Index point changes are affected by the level of the index in relation to its base period, whereas percent changes are not. The following example shows the computation of index point and percent changes.

Index point change

Final Demand Goods Price Index	107.5
Less previous index	104.0
Equals index point change	3.5

Index percent change

Index point change	3.5
Divided by the previous index	104.0
Equals	0.034
Result multiplied by 100	0.034 x 100
Equals percent change	3.4

Seasonally Adjusted and Unadjusted Data

Because price data are used for different purposes by different groups, BLS publishes seasonally adjusted and unadjusted changes each month. Seasonally adjusted data are preferred for analyzing general price trends in the economy because these data eliminate the effect of changes that normally occur at about the same time, and in about the same magnitude, every year—such as price movements resulting from normal weather patterns, regular production and marketing cycles, model changeovers, seasonal discounts, and holidays. For these reasons, seasonally adjusted data more clearly reveal underlying trends. Unadjusted data are of primary interest to users who need information that can be related to actual dollar values of transactions. Individuals requiring this information include marketing specialists, purchasing agents, budget and cost analysts, contract specialists, and commodity traders. It is the unadjusted data that are generally cited when escalating long-term contracts

such as purchasing agreements or real estate leases. For more information, see *Escalation Guide for Contracting Parties*, on the Web at www.bls.gov/ppi/ppiescalation.htm.

In 1998, the PPI implemented the X-12-ARIMA Seasonal Adjustment Method; prior to that year, PPI employed the X-11 method. Each year, the seasonal status of most commodity indexes is reevaluated to reflect more recent price behavior. Industry net output indexes are not seasonally adjusted. For time series that exhibit seasonal pricing patterns, new seasonal factors are estimated and applied to the unadjusted data from the prior 5 years. Updated seasonally adjusted indexes replace the most recent 5 years of seasonal data.

Seasonal factors may be applied to series using either a direct or an aggregative method. Generally, commodity indexes are seasonally adjusted using direct seasonal adjustment, which produces a more complete elimination of seasonal movements than does the aggregative method. However, the direct seasonal adjustment process may not yield figures that possess additive consistency. Thus, a seasonally adjusted index for a broad category that is directly adjusted may not be logically consistent with all seasonally adjusted indexes for its components. Seasonal movements for FD-ID indexes are derived indirectly through an aggregative method that combines movements of a wide variety of subproduct class (six-digit) series.

Seasonally adjusted indexes can become problematic when previously stable and predictable price patterns abruptly change. If the new pattern persists, the seasonal adjustment method will eventually reflect it; if the pattern keeps shifting, however, seasonally adjusted data will become chronically troublesome. This problem occurs relatively infrequently for farm and food-related products, but has more often affected manufactured products such as automobiles and steel.

Since January 1988, the PPI has used Intervention Analysis Seasonal Adjustment methods to enhance the calculation of seasonal factors. With this technique, outlier values that may distort the seasonal pattern are removed from the data prior to applying the standard seasonal factor estimation procedure. For example, a possible economic cause for large price movements for petroleum-based products might have been the Persian Gulf War. In this case, intervention techniques allowed for better estimates of seasonally adjusted data. On the whole, very few series have required intervention. Out of almost 300 seasonally adjusted series, only 31 were subject to intervention in 2013.

For more information relating to seasonal adjustment methods, see (1) “Appendix A: Seasonal Adjustment Methodology at BLS,” in the *BLS Handbook of Methods* (July 2010), (2) “Summary of Changes to the PPI’s Seasonal Adjustment Methodology” in the January 1995 issue of *Producer Price Indexes*, and (3) “PPI and CPI Seasonal Adjustment: an Update” in the July 2010 *Monthly Labor Review*.

Producer Price Index Data on the Internet

In 1995, the BLS began posting PPI series, news releases, and technical information to both a World Wide Web (WWW) site and a file transfer protocol (FTP) site. During the years following the introduction of PPI Internet services, use of these sites eclipsed more traditional methods of data

dissemination, such as subscriptions to the *PPI Detailed Report*. There were more than 5 million instances of PPI data and tables being downloaded from the Internet during the 12 months ended December 31, 2012.

Retrieving PPI data from the PPI Web site

PPI data can be obtained from the WWW address (www.bls.gov/ppi). On this page, under the tab labeled “Featured PPI databases” links provide the following methods of data retrieval:

- **Top Picks** is a form-based application for both Industry Data and Commodity Data that allows the user to quickly obtain PPI time series data by selecting the high-level aggregate and other commonly requested time series, including the All Commodities Index and the FD-ID indexes (for example, Final Demand). Within each list, any one—or all—of the time series shown can be selected. A user can modify the date range and output options after executing the query, using the reformat button above the data output table.
- **One-Screen Data Search and Multi-Screen Data Search** are form-based query applications for both Industry Data and Commodity Data designed for users unfamiliar with the PPI coding structure. These applications guide a user through the PPI classification by listing index titles and do not require knowledge of commodity or industry codes. Data retrieved are based on a query formulated by selecting data characteristics from lists provided. Two options are available to create customized tables, depending on a user’s browser capability. The one-screen option is a JavaScript application that uses a single screen to guide a user through the available time series data. The second option is a multiple-screen, non-Java-based application. Both methods allow a user to browse the PPI coding structure and select multiple series. Users can modify the date range and output options after executing the query using the reformat button above the data output table.
- **Series Report** is a form-based application that allows users to input multiple, formatted PPI time series identifiers (commodity or industry codes) as inputs in extracting data according to a specified set of date ranges and output options. This application provides the most efficient path for users who are familiar with the format of PPI time series identifiers. There are five alphabetic prefixes used to create unique PPI time series identifiers: WP, WD, PC, PD, and ND. Each provides the user access to a different PPI database. Adding either a “u” (not seasonally adjusted) or an “s” (seasonally adjusted) to the end of these prefixes further specifies the type of data needed.

EXAMPLES

For commodity and FD-ID indexes, series identifiers combine a “wpu” prefix (not seasonally adjusted) or a

“wps” prefix (seasonally adjusted) with a commodity code.

<u>Commodity code</u>	<u>Provides data for:</u>
wps141101	Passenger cars, seasonally adjusted
wpu141101	Passenger cars, not seasonally adjusted
wpufd4	Final demand, not seasonally adjusted
wpsid63	Services for intermediate demand, seasonally adjusted

For discontinued commodity indexes, series identifiers combine a “wdu” prefix (not seasonally adjusted) or a “wds” prefix (seasonally adjusted) with a commodity code.

<u>Commodity code</u>	<u>Provides data for:</u>
wds019	Other farm products, seasonally adjusted
wdu0635	Preparations, ethical (prescription), not seasonally adjusted
wdusi138011	Stainless steel mill products, not seasonally adjusted

Current price indexes grouped by industry according to NAICS have series identifiers that begin with the prefix “pcu.” After the prefix, there are 12 digits (the 6-digit industry code is listed twice) followed by up to 7 alphanumeric characters identifying product detail. Dashes are used as placeholders for higher-level industry group codes.

<u>Industry-product code, current NAICS series</u>	<u>Provides data for:</u>
pcu325---325---	Chemical manufacturing
pcu336110336110	Automobile and light duty motor vehicle manufacturing
pcu621111621111411	Offices of physicians, one- and two-physician practices and single-specialty group practices, general/family practice

Discontinued industry-product codes based on SIC combine a “pdu” prefix and “#” between the fourth and fifth characters of the product code. Series identifiers for the discontinued dataset use underscores as placeholders to complete a reference to an SIC industry group code of fewer than four digits. (All PPI industry-based indexes organized by SIC were discontinued with the introduction of NAICS in 2004.)

<u>Industry-product code, discontinued SIC series</u>	<u>Provides data for:</u>
pdu28_#	Chemicals and allied products
pdu331_#	Blast furnaces, steel works, and rolling and finishing mills
pdu3711#111	Passenger cars

Price indexes for discontinued series grouped by industry according to NAICS have identifiers that begin with the prefix “ndu.” After the prefix, there are 12 numeric digits (the 6-digit industry code is listed twice), and up to 7 additional alphanumeric characters that identify product detail. Dashes are used as placeholders for higher-level group codes.

*Industry-product code,
discontinued NAICS series*

ndu212231212231
ndu2122312122312
ndu212231212231214

Provides data for

Lead and zinc ore mining
Lead, zinc concentrates
Lead concentrates

- **Text Files** are best suited for users requiring access to either a large volume of time series data or other PPI-related documentation, such as seasonal factor tables and relative importance tables. The text files can be accessed at <http://download.bls.gov/> or directly from links on the “PPI Databases” page or the PPI homepage. Data and documentation available for download include the following:

Industry Data	<u>Directory:</u> /pub/time.series/pc
Industry Data - Discontinued (NAICS basis)	/pub/time.series/nd
(SIC basis)	/pub/time.series/pd
Commodity Data (incl. FD-ID)	/pub/time.series/wp
Commodity Data – Discontinued	/pub/time.series/wd
Special requests	/pub/special.requests/ppi

Additional information

The PPI homepage (www.bls.gov/ppi) contains additional information regarding PPI data and methodology. The top section of the homepage provides PPI news releases, both current and archived, as well as general PPI information. The “PPI Tables” section found beneath the statistics section provides relative importance and seasonal factor tables. The remaining sections offer special notices and publications pertaining to PPI methodology and applications.

For questions or comments regarding PPI data classification, methodology, or data availability on the Internet, call or e-mail the Section of Index Analysis and Public Information at (202) 691-7705 or ppi-info@bls.gov.

Table 1. Producer price indexes and percent changes for final demand¹
 [Nov 2009=100, unless otherwise indicated]

Grouping	Other index base	Relative Importance Dec. 2013 ²	Unadjusted index			Unadjusted percent change to Feb. 2014 from:		Seasonally adjusted percent change from:		
			Oct. 2013 ³	Jan. 2014 ³	Feb. 2014 ³	Feb. 2013	Jan. 2014	Nov. to Dec.	Dec. to Jan.	Jan. to Feb.
Final demand.....		100.000	109.7	109.6	109.8	0.9	0.2	0.1	0.2	-0.1
Final demand goods.....		34.370	112.5	112.9	113.5	0.6	0.5	0.4	0.4	0.4
Final demand foods.....		5.479	117.3	117.6	118.0	0.6	0.3	-0.4	1.0	0.6
Finished consumer foods ⁴	00/82	4.513	204.4	204.9	205.7	2.0	0.4	-0.5	1.1	0.7
Finished consumer foods, crude.....	00/82	0.342	195.1	190.2	190.7	7.9	0.3	-7.0	3.8	2.2
Finished consumer foods, processed.....	00/82	4.172	205.4	206.3	207.2	1.6	0.4	0.0	0.9	0.6
Government purchased foods.....		0.226	120.2	121.7	122.6	3.9	0.7	0.2	1.4	1.1
Foods for export.....		0.740	127.0	127.1	127.5	-7.8	0.3	-0.2	0.7	0.2
Final demand energy.....		6.785	124.3	123.1	125.5	-1.3	1.9	1.5	0.3	0.5
Finished consumer energy goods ⁴	00/82	5.358	190.3	188.8	192.5	-0.4	2.0	1.1	0.4	0.5
Government purchased energy.....		1.050	138.0	136.3	138.5	-4.1	1.6	2.7	0.4	0.4
Energy for export.....		0.378	143.2	140.8	143.6	-6.8	2.0	3.9	-0.6	1.0
Final demand goods less foods and energy.....		22.106	108.2	109.0	109.2	1.2	0.2	0.3	0.4	0.2
Finished goods less foods and energy ⁴	00/82	13.725	185.9	187.7	187.9	1.7	0.1	0.3	0.5	0.1
Finished consumer goods less foods and energy.....	00/82	7.653	201.4	204.3	204.5	2.1	0.1	0.4	0.7	0.2
Nondurable consumer goods less foods and energy.....	00/82	4.391	245.3	250.9	251.3	2.9	0.2	0.7	1.0	0.2
Durable consumer goods.....	00/82	3.263	153.4	153.9	153.9	1.1	0.0	0.1	0.2	0.1
Private capital equipment.....	00/82	6.072	165.2	165.8	165.9	1.2	0.1	0.1	0.2	0.1
Private capital equipment for manufacturing industries.....	00/82	1.453	167.1	167.7	168.0	1.1	0.2	0.1	0.2	0.2
Private capital equipment for nonmanufacturing industries.....	00/82	4.619	164.3	165.0	165.1	1.3	0.1	0.1	0.3	0.1
Government purchased goods, excluding foods and energy.....		2.403	107.8	108.3	108.6	0.7	0.3	0.1	0.3	0.3
Government purchased goods excluding foods, energy, and capital equipment.....		1.459	109.3	109.8	110.2	0.6	0.4	0.2	0.3	0.4
Government purchased capital equipment.....		0.944	104.6	104.9	105.1	0.9	0.2	0.2	0.2	0.2
Goods for export, excluding foods and energy.....		5.978	109.6	110.2	110.6	0.5	0.4	0.2	0.3	0.3
Final demand services.....		63.545	108.0	107.6	107.6	1.0	0.0	-0.1	0.1	-0.3
Final demand trade services ⁵		19.904	109.5	107.7	107.3	-0.1	-0.4	-0.8	0.1	-1.0
Trade of finished goods ⁴		17.356	109.5	107.5	107.1	-0.3	-0.4	-1.0	0.1	-1.0
Trade of personal consumption goods.....		14.493	109.9	107.3	107.0	-0.7	-0.3	-1.2	0.1	-1.2
Trade of private capital equipment.....		2.863	107.6	107.6	107.1	1.8	-0.5	0.1	0.2	-0.6
Trade of government purchased goods.....		0.802	108.2	108.3	108.1	1.8	-0.2	0.6	-0.1	-0.2
Trade of government purchased goods, excluding capital equipment.....		0.526	107.7	107.8	107.9	1.4	0.1	0.6	-0.2	0.1
Trade of government purchased capital equipment.....		0.276	109.3	109.4	108.7	3.0	-0.6	0.4	0.2	-0.6
Trade of exports.....		1.745	109.6	109.4	109.1	1.6	-0.3	0.2	0.1	-0.3
Final demand transportation and warehousing services.....		4.896	115.3	115.6	115.5	0.4	-0.1	1.2	-1.1	-0.2
Transportation of passengers for final demand.....		1.396	116.1	117.0	114.1	-1.3	-2.5	4.2	-4.2	-2.7
Transportation of private passengers.....		1.170	116.1	117.0	114.1	-1.3	-2.5	4.2	-4.2	-2.7
Transportation of government passengers.....		0.191	116.1	117.0	114.1	-1.3	-2.5	4.1	-4.1	-2.7
Transportation of passengers for export.....		0.034	116.1	117.1	114.1	-1.4	-2.6	4.3	-4.3	-2.7
Transportation and warehousing of goods for final demand.....		3.500	114.9	114.9	116.0	1.1	1.0	0.0	0.3	0.8
Transportation and warehousing of finished goods ⁴		2.230	114.5	114.4	115.3	1.1	0.8	0.0	0.3	0.6
Transportation and warehousing of personal consumption goods.....		1.769	114.6	114.6	115.6	1.2	0.9	0.1	0.3	0.6
Transportation and warehousing of private capital equipment.....		0.461	113.9	113.8	114.3	0.9	0.4	0.1	0.4	0.2
Transportation and warehousing of government purchased goods.....		0.401	113.3	113.4	115.3	1.7	1.7	0.0	0.2	1.6
Transportation and warehousing of exports.....		0.869	116.8	117.0	118.1	0.9	0.9	0.0	-0.1	0.9
Final demand services less trade, transportation, and warehousing.....		38.746	106.4	106.8	106.9	1.7	0.1	0.2	0.1	0.1
Finished services less trade, transportation, and warehousing ⁴		34.460	106.8	107.1	107.3	1.8	0.2	0.3	0.1	0.1
Finished consumer services less trade, transportation, and warehousing.....		32.432	106.7	107.1	107.2	1.7	0.1	0.3	0.1	0.1
Private capital investment services less trade, transportation, and warehousing.....		2.029	108.5	108.2	108.9	2.6	0.6	-0.1	-0.3	0.6
Government purchased services less trade, transportation, and warehousing.....		2.861	103.2	103.5	103.7	1.0	0.2	0.2	0.2	0.1
Gov. purchased services less trade, transportation, and warehousing, excl. capital investment.....		2.774	103.4	103.7	103.9	1.1	0.2	0.2	0.2	0.1
Government purchased capital investment services less trade, transportation, and warehousing.....		0.088	97.3	96.7	97.4	0.4	0.7	-0.3	-0.3	0.7
Services for export less trade, transportation, and warehousing.....		1.424	104.2	104.7	104.5	0.6	-0.2	0.2	0.3	-0.2
Final demand construction.....		2.085	109.0	109.7	109.8	3.2	0.1	0.0	0.6	0.1
Construction for private capital investment.....		1.434	108.9	109.5	109.6	3.3	0.1	0.1	0.6	0.1
Construction for government.....		0.651	109.2	110.0	110.0	2.9	0.0	0.0	0.6	0.0
Special groupings										
Final demand less exports.....	04/10	88.866	107.9	107.7	107.9	1.0	0.2	0.1	0.2	-0.1
Final demand less government.....	04/10	91.606	107.9	107.9	108.0	0.9	0.1	0.0	0.2	0.0
Final demand less foods, food and nonalcoholic beverages for immediate consumption, and energy ⁶	04/10	87.213	107.0	107.0	107.0	1.1	0.0	0.0	0.1	-0.1
Final demand less foods and energy ⁶	04/10	87.736	106.9	106.9	106.9	1.1	0.0	0.0	0.2	-0.2

See footnotes at end of table.

Table 1. Producer price indexes and percent changes for final demand¹ — Continued
 [Nov 2009=100, unless otherwise indicated]

Grouping	Other index base	Relative Importance Dec. 2013 ²	Unadjusted index			Unadjusted percent change to Feb. 2014 from:		Seasonally adjusted percent change from:		
			Oct. 2013 ³	Jan. 2014 ³	Feb. 2014 ³	Feb. 2013	Jan. 2014	Nov. to Dec.	Dec. to Jan.	Jan. to Feb.
Final demand less foods and food and nonalcoholic beverages for immediate consumption ⁶	04/10	93.998	107.7	107.6	107.8	0.9	0.2	0.2	0.2	-0.2
Final demand less foods ⁶	04/10	94.521	107.6	107.5	107.7	0.9	0.2	0.1	0.2	-0.1
Final demand less energy.....	04/10	93.215	107.3	107.3	107.3	1.0	0.0	-0.1	0.2	-0.1
Final demand less trade services.....	01/10	80.096	108.5	108.9	109.2	1.2	0.3	0.3	0.3	0.2
Final demand less distributive services ⁷	01/10	76.596	108.3	108.7	109.0	1.2	0.3	0.3	0.3	0.1
Final demand goods less energy.....	01/10	27.585	108.9	109.7	109.9	1.1	0.2	0.1	0.6	0.3
Final demand goods less foods.....	04/10	28.891	109.0	109.4	110.1	0.6	0.6	0.5	0.4	0.3
Final demand services less trade services.....	04/10	43.641	106.5	106.8	106.9	1.5	0.1	0.4	-0.1	0.1
Final demand distributive services ⁷	04/10	23.404	108.2	106.7	106.5	0.1	-0.2	-0.6	0.1	-0.7
Final demand goods plus final demand distributive services ⁷	04/10	57.774	109.2	108.8	109.1	0.5	0.3	-0.1	0.4	-0.1
Final demand less foods, energy, and trade services ⁶	08/13	67.832	100.3	100.8	100.9	-	0.1	0.3	0.1	0.1
Private and government purchased capital equipment.....	08/13	7.016	100.8	101.2	101.2	-	0.0	0.1	0.2	0.2
Private and government purchased capital investment services.....	08/13	5.717	99.6	99.5	99.5	-	0.0	0.0	0.0	0.0
Total private and government purchased capital investment.....	08/13	12.733	100.4	100.7	100.7	-	0.0	0.1	0.2	0.0
Total finished ⁴	01/10	80.246	108.4	108.3	108.4	1.1	0.1	0.0	0.3	-0.2
Total finished less foods, food and nonalcoholic beverages for immediate consumption, and energy ^{4, 6}	12/10	69.852	106.5	106.4	106.4	1.2	0.0	0.0	0.1	-0.2
Total finished less foods and energy ^{4, 6}	01/10	70.375	107.4	107.3	107.2	1.1	-0.1	0.0	0.1	-0.2
Total finished less foods and food and nonalcoholic beverages for immediate consumption ^{4, 6}	12/10	75.210	106.8	106.7	106.8	1.1	0.1	0.1	0.2	-0.2
Total finished less foods ^{4, 6}	01/10	75.733	108.1	107.9	108.0	1.0	0.1	0.1	0.1	-0.1
Total finished less energy ⁴	01/10	74.888	107.7	107.7	107.7	1.3	0.0	-0.1	0.2	-0.1
Finished goods ⁴	00/82	23.596	196.9	197.8	198.9	1.3	0.6	0.4	0.6	0.4
Finished goods less energy ⁴	00/82	18.238	190.0	191.5	191.9	1.8	0.2	0.1	0.7	0.3
Finished goods, excluding foods ^{4, 6}	00/82	19.083	194.3	195.2	196.4	1.1	0.6	0.5	0.5	0.3
Finished services ⁴	01/10	55.216	107.3	106.8	106.8	1.0	0.0	-0.1	0.0	-0.3
Private capital investment services.....	04/10	5.353	107.2	107.1	107.1	2.1	0.0	0.1	-0.1	0.0
Finished distributive services ^{4, 7}	04/10	19.586	107.9	106.1	105.9	-0.2	-0.2	-0.8	0.1	-0.8
Finished services less trade services ⁴	04/10	37.860	106.6	107.0	107.1	1.7	0.1	0.4	0.0	0.0
Finished services less distributive services ^{4, 7}	04/10	35.631	106.3	106.7	106.7	1.7	0.0	0.4	-0.1	0.0
Total private capital investment (goods, services, and construction).....	04/10	12.859	106.2	106.4	106.4	1.7	0.0	0.1	0.2	0.1
Finished goods plus finished distributive services ⁴	04/10	43.182	109.0	108.4	108.7	0.6	0.3	-0.2	0.4	-0.2
Total exports.....	04/10	11.169	108.6	108.9	109.2	-0.3	0.3	0.3	0.2	0.2
Goods for export.....	00/82	7.095	188.9	189.7	190.4	-0.9	0.4	0.3	0.3	0.3
Services for export.....	04/10	4.073	108.1	108.3	108.3	1.0	0.0	0.1	0.1	0.0
Total government purchases.....	04/10	8.585	107.8	108.0	108.4	0.6	0.4	0.6	0.2	0.2
Government purchased goods.....	00/82	3.679	191.1	191.1	192.3	-0.7	0.6	0.9	0.4	0.3
Government purchased services.....	04/10	4.255	104.8	105.0	105.2	1.2	0.2	0.4	0.0	0.1
Total government purchased capital investment (goods, services, construction).....	08/13	1.959	100.5	100.9	100.9	-	0.0	0.1	0.3	0.0
Personal consumption.....	01/10	67.388	108.8	108.6	108.7	0.9	0.1	0.0	0.3	-0.2
Personal consumption goods (finished consumer goods).....	00/82	17.524	210.2	211.1	212.7	1.3	0.8	0.4	0.7	0.4
Personal consumption goods less energy.....	00/82	12.167	202.2	204.2	204.6	2.0	0.2	0.0	0.8	0.4
Personal consumption goods less foods.....	00/82	13.011	211.1	212.1	214.0	1.0	0.9	0.7	0.6	0.3
Personal consumption nondurable goods less foods.....	00/82	9.748	236.6	238.0	240.8	1.1	1.2	0.9	0.7	0.3
Personal consumption services.....	04/10	49.863	106.9	106.4	106.4	0.9	0.0	-0.1	0.0	-0.3
Personal consumption less trade services.....	04/10	52.895	108.3	108.7	109.0	1.5	0.3	0.4	0.2	0.1
Personal consumption less distributive services ⁷	04/10	51.126	108.1	108.6	108.8	1.5	0.2	0.4	0.3	0.1
Personal consumption goods plus personal consumption distributive services ⁷	08/13	33.786	100.2	99.4	99.7	-	0.3	-0.2	0.4	-0.3

¹ Further information about the Final Demand-Intermediate Demand Aggregation system is available online at <http://www.bls.gov/ppi/fdidaggregation.htm>.

² Comprehensive relative importance figures are initially computed after the publication of December indexes and are recalculated after final December indexes are available. Individual items and subtotals may not add exactly to totals because of rounding differences.

³ The indexes for October 2013 have been recalculated to incorporate late reports and corrections by respondents. All indexes are subject to revision 4 months after original publication.

⁴ PPI defines Total finished as including only the personal consumption and private capital investment portions of final demand.

⁵ Trade indexes measure changes in margins received by wholesalers and retailers.

⁶ The PPI definition of foods does not include food and beverages for immediate consumption. PPI defines food and beverages for immediate consumption as the service of preparing meals, snacks, and beverages to customer order for immediate on-premises and off-premises consumption.

⁷ Distributive services include transportation, warehousing, and trade of goods.

"-" Data not available.

Table 2. Producer price indexes and percent changes for intermediate demand by commodity type¹
 [Nov. 2009=100, unless otherwise indicated]

Grouping	Other index base	Relative Importance Dec. 2013 ²	Unadjusted index			Unadjusted percent change to Feb. 2014 from:		Seasonally adjusted percent change from:		
			Oct. 2013 ³	Jan. 2014 ³	Feb. 2014 ³	Feb. 2013	Jan. 2014	Nov. to Dec.	Dec. to Jan.	Jan. to Feb.
Processed goods										
Processed goods for intermediate demand.....	00/82	100.000	200.1	200.6	202.4	0.0	0.9	0.5	0.6	0.7
Materials and components for manufacturing.....	00/82	44.528	187.0	187.6	189.0	-0.7	0.7	0.2	0.3	0.7
Materials for manufacturing.....		28.204	116.8	117.2	118.5	-1.7	1.1	0.3	0.5	1.0
Materials for food manufacturing.....	00/82	3.326	199.9	199.8	201.3	1.7	0.8	0.1	1.0	0.9
Materials for nondurable manufacturing.....	00/82	15.795	239.8	239.9	243.4	-2.9	1.5	0.5	0.2	1.4
Materials for durable manufacturing.....	00/82	9.084	193.2	195.2	196.3	-0.7	0.6	-0.1	0.8	0.4
Components for manufacturing.....	00/82	16.323	149.3	149.5	149.7	0.8	0.1	0.1	-0.1	0.1
Components for nondurable manufacturing.....		0.485	109.5	110.1	110.0	1.9	-0.1	0.0	0.9	0.0
Components for durable manufacturing.....		15.839	105.7	105.8	106.0	0.9	0.2	0.0	-0.1	0.2
Materials and components for construction.....	00/82	9.596	222.9	224.5	225.5	1.5	0.4	-0.1	0.5	0.4
Materials for construction.....		5.411	111.3	111.9	112.6	1.9	0.6	-0.1	0.5	0.5
Components for construction.....		4.185	109.5	110.5	110.8	1.0	0.3	-0.2	0.5	0.2
Processed fuels and lubricants for intermediate demand.....	00/82	20.113	208.1	207.6	212.0	-0.9	2.1	1.4	1.5	1.0
Processed fuels and lubricants to manufacturing industries.....	00/82	5.148	201.8	206.3	210.2	2.0	1.9	0.5	3.7	0.8
Processed fuels and lubricants to nonmanufacturing industries.....	00/82	14.965	210.9	208.6	213.1	-1.9	2.2	1.7	0.7	1.1
Containers for intermediate demand.....	00/82	2.677	220.4	218.3	218.4	3.7	0.0	0.1	-1.2	0.0
Supplies for intermediate demand.....	00/82	23.086	191.3	192.4	193.4	1.0	0.5	0.3	0.7	0.6
Supplies to manufacturing industries.....	00/82	2.919	186.1	186.7	187.6	1.8	0.5	-0.1	0.4	0.4
Supplies to nonmanufacturing industries.....	00/82	20.167	190.6	191.7	192.8	1.0	0.6	0.3	0.8	0.6
Supplies to nonmanufacturing industries, feeds.....	00/82	1.730	221.9	223.1	225.8	-5.1	1.2	1.2	3.8	1.2
Supplies to nonmanufacturing industries, other than feeds.....	00/82	18.437	189.7	190.8	191.7	1.6	0.5	0.2	0.5	0.5
Unprocessed goods										
Unprocessed goods for intermediate demand.....	00/82	100.000	241.2	245.1	259.3	5.4	5.8	2.3	0.9	5.7
Unprocessed foodstuffs and feedstuffs.....	00/82	37.026	192.9	198.1	200.3	-0.9	1.1	-0.5	3.5	0.5
Unprocessed nonfood materials.....	00/82	62.974	265.6	268.3	291.3	9.3	8.6	3.9	-0.7	8.8
Unprocessed nonfood materials except fuel.....	00/82	47.624	324.9	315.4	329.4	-0.1	4.4	3.5	-3.2	4.8
Unprocessed nonfood materials except fuel to manufacturing industries.....	00/82	45.663	307.1	297.5	311.3	-0.2	4.6	3.7	-3.4	5.0
Unprocessed nonfood materials except fuel to nonmanufacturing industries.....	00/82	1.961	218.5	221.2	222.8	3.5	0.7	0.0	0.6	0.8
Unprocessed fuel.....	00/82	15.350	162.7	185.7	223.1	41.7	20.1	5.1	7.3	20.5
Unprocessed fuel to manufacturing industries.....	00/82	0.561	191.4	205.6	225.5	17.6	9.7	2.9	1.5	10.0
Unprocessed fuel to nonmanufacturing industries.....	00/82	14.789	165.0	188.7	227.5	42.7	20.6	5.2	7.6	20.8
Services										
Services for intermediate demand.....		100.000	107.6	107.8	108.0	1.2	0.2	0.1	0.0	0.2
Trade services for intermediate demand ⁴		17.041	109.3	109.1	109.1	0.6	0.0	-0.3	-0.3	-0.1
Trade services for manufacturing industries.....	12/12	9.062	97.7	97.9	98.0	1.3	0.1	-0.5	0.1	0.1
Trade services for nonmanufacturing industries.....	12/12	7.979	99.2	98.6	98.7	-0.2	0.1	0.0	-0.7	-0.2
Transportation and warehousing services for intermediate demand.....		14.303	116.3	117.4	118.5	2.3	0.9	0.3	-0.3	1.0
Transportation of passengers for intermediate demand.....		1.048	116.1	117.0	114.1	-1.3	-2.5	4.2	-4.2	-2.7
Transportation of passengers for manufacturing industries.....		0.204	116.1	117.1	114.1	-1.4	-2.6	4.3	-4.3	-2.7
Transportation of passengers for nonmanufacturing industries.....		0.844	116.1	117.0	114.0	-1.3	-2.6	4.1	-4.1	-2.7
Transportation and warehousing of goods for intermediate demand.....		13.255	116.3	117.4	118.8	2.6	1.2	0.1	0.0	1.3
Transportation and warehousing of goods for manufacturing industries.....	12/12	4.304	100.5	100.4	101.0	0.9	0.6	0.1	0.2	0.4
Transportation and warehousing of goods for nonmanufacturing industries.....	12/12	8.951	102.9	104.4	105.9	3.4	1.4	0.0	-0.2	1.7
Services less trade, transportation, and warehousing for intermediate demand.....		68.656	105.6	105.7	105.7	1.1	0.0	0.1	0.3	0.0
Services less trade, transportation, and warehousing for manufacturing industries.....		2.003	102.0	102.2	102.3	0.3	0.1	0.6	-0.2	0.0
Services less trade, transportation, and warehousing for nonmanufacturing industries.....		66.653	105.7	105.8	105.8	1.1	0.0	0.1	0.3	0.0
Construction										
Construction for intermediate demand.....		100.000	106.1	106.6	106.8	1.4	0.2	-0.1	0.1	0.2
Special groupings										
Processed materials less foods and feeds.....	00/82	92.071	200.1	200.6	202.4	-0.1	0.9	0.5	0.5	0.6
Processed foods and feeds.....	00/82	7.929	202.2	202.9	204.8	0.5	0.9	0.4	1.7	1.1
Processed energy goods.....	00/82	21.372	212.3	211.7	215.9	-1.5	2.0	1.4	1.4	1.0
Processed materials less energy.....	00/82	78.628	194.5	195.3	196.5	0.4	0.6	0.2	0.4	0.6
Processed materials less foods and energy.....	00/82	70.699	193.4	194.2	195.4	0.4	0.6	0.2	0.3	0.6
Intermediate distributive services ⁵	04/10	31.344	109.8	110.1	110.6	1.4	0.5	-0.2	-0.2	0.5
Processed goods plus intermediate distributive services.....	04/10	-	109.5	109.8	110.7	0.4	0.8	0.3	0.5	0.6
Unprocessed materials less agricultural products.....	00/82	60.342	269.1	272.5	297.1	11.4	9.0	4.1	-0.6	9.3

See footnotes at end of table.

Table 2. Producer price indexes and percent changes for intermediate demand by commodity type¹ — Continued
 [Nov. 2009=100, unless otherwise indicated]

Grouping	Other index base	Relative Importance Dec. 2013 ²	Unadjusted index			Unadjusted percent change to Feb. 2014 from:		Seasonally adjusted percent change from:		
			Oct. 2013 ³	Jan. 2014 ³	Feb. 2014 ³	Feb. 2013	Jan. 2014	Nov. to Dec.	Dec. to Jan.	Jan. to Feb.
Unprocessed energy materials ⁶	00/82	39.707	234.4	234.3	267.4	18.3	14.1	5.8	-1.5	14.7
Unprocessed materials less energy.....	00/82	60.293	230.8	238.0	239.4	-1.8	0.6	-0.1	2.7	0.1
Unprocessed nonfood materials less energy ⁷	00/82	23.267	338.7	351.9	350.9	-3.3	-0.3	0.6	1.4	-0.7

¹ Further information about the Final Demand-Intermediate Demand Aggregation system is available online at <http://www.bls.gov/ppi/fdidaggregation.htm>

² Comprehensive relative importance figures are initially computed after the publication of December indexes and are recalculated after final December indexes are available. Individual items and subtotals may not add exactly to totals because of rounding differences.

³ The indexes for October 2013 have been recalculated to incorporate late reports and corrections by respondents. All indexes are subject to revision 4 months after original publication.

⁴ Trade indexes measure changes in margins received by wholesalers and retailers.

⁵ Includes intermediate trade, transportation, and warehousing services.

⁶ Includes crude petroleum.

⁷ Excludes crude petroleum.

"-" Data not available.

Table 3. Producer price indexes and percent changes for intermediate demand by production flow¹
 [Nov. 2009=100, unless otherwise indicated]

Grouping	Other index base	Relative Importance Dec. 2013 ²	Unadjusted index			Unadjusted percent change to Feb. 2014 from:		Seasonally adjusted percent change from:		
			Oct. 2013 ³	Jan. 2014 ³	Feb. 2014 ³	Feb. 2013	Jan. 2014	Nov. to Dec.	Dec. to Jan.	Jan. to Feb.
Stage 4										
Stage 4 intermediate demand.....		100.000	110.1	110.2	110.6	0.7	0.4	0.3	0.2	0.3
Inputs to stage 4 goods producers.....		25.296	109.2	109.1	109.4	0.1	0.3	0.1	0.0	0.2
Goods.....		19.604	109.5	109.5	109.8	-0.2	0.3	0.1	0.0	0.3
Foods.....		1.718	121.1	119.0	119.7	-8.8	0.6	0.2	-0.6	0.6
Energy.....		0.220	131.0	128.1	129.7	-5.5	1.2	1.1	-0.9	-0.2
Goods excluding foods and energy.....		17.666	108.1	108.3	108.6	0.8	0.3	0.1	0.1	0.2
Services.....		5.692	107.8	107.6	107.5	1.0	-0.1	0.0	0.1	-0.2
Trade services.....		4.200	109.3	109.1	108.9	1.2	-0.2	-0.2	0.2	-0.2
Transportation and warehousing services.....		0.187	115.0	115.3	115.0	0.4	-0.3	1.1	-0.8	-0.5
Transportation of passengers.....		0.044	116.1	117.1	114.1	-1.4	-2.6	4.3	-4.3	-2.7
Transportation and warehousing of goods.....		0.143	114.5	114.5	115.0	1.0	0.4	0.1	0.3	0.3
Services less trade, transportation, and warehousing.....		1.305	101.6	101.8	101.9	0.5	0.1	0.2	-0.1	0.2
Inputs to stage 4 services producers.....		54.207	110.1	110.4	110.7	1.1	0.3	0.5	0.3	0.3
Goods.....		18.149	115.1	115.3	115.8	-0.1	0.4	0.6	1.0	0.3
Foods.....		2.917	120.7	122.5	122.9	2.5	0.3	-0.2	2.5	0.5
Energy.....		6.061	121.0	119.8	120.7	-3.1	0.8	1.8	1.3	0.2
Goods excluding foods and energy.....		9.172	109.8	110.4	110.8	1.4	0.4	0.2	0.4	0.5
Services.....		35.706	107.5	107.7	108.0	1.6	0.3	0.2	0.0	0.2
Trade services.....		3.109	107.1	107.0	106.7	-0.9	-0.3	1.2	-1.1	-0.3
Transportation and warehousing services.....		4.880	113.0	113.5	115.2	2.2	1.5	0.3	-0.4	1.5
Transportation of passengers.....		0.164	116.0	116.9	114.0	-1.3	-2.5	4.0	-4.0	-2.7
Transportation and warehousing of goods.....		4.716	112.9	113.4	115.3	2.4	1.7	0.1	-0.2	1.7
Services less trade, transportation, and warehousing.....		27.716	106.8	107.0	107.1	1.8	0.1	0.2	0.1	0.0
Construction.....		0.352	106.1	106.6	106.8	1.4	0.2	-0.1	0.1	0.2
Inputs to stage 4 construction producers.....		20.496	111.0	111.0	111.6	0.5	0.5	0.2	0.2	0.2
Goods.....		13.913	113.3	113.3	114.1	0.3	0.7	0.2	0.2	0.4
Energy.....		2.057	136.7	131.6	134.8	-6.5	2.4	2.0	-1.1	-0.4
Goods excluding foods and energy.....		11.856	110.5	111.3	111.8	1.5	0.4	-0.1	0.5	0.4
Services.....		6.583	105.8	105.7	105.9	0.8	0.2	-0.1	0.0	0.1
Trade services.....		1.040	107.1	105.2	106.2	0.4	1.0	-0.6	-1.8	1.0
Transportation and warehousing services.....		1.056	113.7	113.6	114.0	0.8	0.4	0.3	0.2	0.1
Transportation of passengers.....		0.035	115.6	116.4	113.9	-0.9	-2.1	3.5	-3.5	-2.4
Transportation and warehousing of goods.....		1.021	113.6	113.4	114.0	0.9	0.5	0.1	0.4	0.2
Services less trade, transportation, and warehousing.....		4.487	103.8	104.2	104.0	0.9	-0.2	0.0	0.4	-0.1
Stage 3										
Stage 3 intermediate demand.....		100.000	113.8	114.9	115.9	1.4	0.9	0.1	1.0	0.6
Inputs to stage 3 goods producers.....		44.662	119.6	121.7	123.1	2.8	1.2	0.1	1.8	0.9
Goods.....		42.586	120.1	122.2	123.7	2.9	1.2	0.0	2.0	1.0
Foods.....		11.769	144.0	149.7	152.1	7.0	1.6	-0.3	5.0	1.2
Energy.....		4.613	111.4	115.3	120.2	6.2	4.2	1.2	3.5	3.8
Goods excluding foods and energy.....		26.205	112.2	112.8	113.4	0.5	0.5	0.1	0.3	0.4
Services.....		1.985	108.8	109.5	109.2	0.8	-0.3	0.5	-0.5	-0.3
Trade services.....		0.586	107.2	107.9	107.3	1.5	-0.6	-0.4	-0.6	-0.6
Transportation and warehousing services.....		0.607	116.1	116.6	116.5	0.6	-0.1	1.0	-0.9	-0.1
Transportation of passengers.....		0.133	116.1	117.1	114.1	-1.4	-2.6	4.3	-4.3	-2.7
Transportation and warehousing of goods.....		0.474	116.1	116.5	117.2	1.2	0.6	0.2	0.0	0.6
Services less trade, transportation, and warehousing.....		0.792	105.2	105.8	105.5	0.2	-0.3	1.0	-0.3	-0.2
Construction.....		0.091	106.1	106.6	106.8	1.4	0.2	-0.1	0.1	0.2
Inputs to stage 3 services producers.....		54.861	108.9	109.1	109.8	0.3	0.6	0.3	0.2	0.4
Goods.....		11.644	115.7	114.1	115.4	-2.1	1.1	0.9	-0.1	0.1
Foods.....		0.050	131.2	139.6	131.2	-2.8	-6.0	-2.9	5.1	-7.5
Energy.....		6.356	126.5	123.0	125.4	-4.5	2.0	1.7	-0.2	0.0
Goods excluding foods and energy.....		5.238	106.5	106.6	107.0	1.1	0.4	0.0	0.2	0.3
Services.....		42.805	106.9	107.7	108.1	0.8	0.4	0.0	0.3	0.5
Trade services.....		0.374	111.2	109.6	108.6	0.5	-0.9	-6.3	0.3	-0.9
Transportation and warehousing services.....		9.292	118.7	120.9	122.6	3.5	1.4	0.3	-0.3	1.8
Transportation of passengers.....		0.429	115.9	116.8	114.0	-1.1	-2.4	3.9	-3.9	-2.6
Transportation and warehousing of goods.....		8.863	118.8	121.1	123.1	3.8	1.7	0.0	-0.1	1.9
Services less trade, transportation, and warehousing.....		33.139	103.7	104.1	104.3	0.1	0.2	0.0	0.4	0.2
Construction.....		0.412	106.1	106.6	106.8	1.4	0.2	-0.1	0.1	0.2
Inputs to stage 3 construction producers.....		0.477	120.8	118.4	119.6	-3.3	1.0	0.7	-1.0	-0.6
Goods.....		0.269	126.4	123.0	125.5	-4.2	2.0	1.1	-0.8	-0.3
Energy.....		0.171	136.4	129.9	133.4	-7.6	2.7	1.6	-1.6	-0.9
Goods excluding foods and energy.....		0.098	112.4	113.6	114.6	2.2	0.9	0.1	0.7	0.9
Services.....		0.208	113.5	112.3	111.9	-2.2	-0.4	0.0	-1.1	-1.0
Trade services.....		0.185	114.3	113.1	112.9	-2.3	-0.2	0.0	-1.0	-0.9
Transportation and warehousing services.....		0.001	116.1	117.1	114.1	-1.4	-2.6	4.3	-4.3	-2.7

See footnotes at end of table.

Table 3. Producer price indexes and percent changes for intermediate demand by production flow¹ — Continued
 [Nov. 2009=100, unless otherwise indicated]

Grouping	Other index base	Relative Importance Dec. 2013 ²	Unadjusted index			Unadjusted percent change to Feb. 2014 from:		Seasonally adjusted percent change from:		
			Oct. 2013 ³	Jan. 2014 ³	Feb. 2014 ³	Feb. 2013	Jan. 2014	Nov. to Dec.	Dec. to Jan.	Jan. to Feb.
Transportation of passengers.....		0.001	116.1	117.1	114.1	-1.4	-2.6	4.3	-4.3	-2.7
Services less trade, transportation, and warehousing.....		0.021	105.9	104.6	102.5	-1.9	-2.0	0.3	-1.5	-1.9
Stage 2										
Stage 2 intermediate demand.....		100.000	112.0	112.1	116.7	3.7	4.1	1.5	0.1	4.2
Inputs to stage 2 goods producers.....		66.546	115.0	115.2	122.1	5.1	6.0	2.3	0.0	6.1
Goods.....		53.994	115.8	115.8	124.4	6.1	7.4	3.0	-0.1	7.5
Foods.....		2.715	134.4	131.3	133.8	-23.4	1.9	0.4	-1.3	1.4
Energy.....		24.218	112.8	112.6	130.0	19.7	15.5	6.4	-0.8	15.8
Goods excluding foods and energy.....		27.061	116.7	117.3	118.0	-1.8	0.6	0.4	0.6	0.5
Services.....		12.128	109.2	109.8	110.1	1.4	0.3	-0.8	0.6	0.2
Trade services.....		8.136	109.7	110.4	110.8	1.7	0.4	-1.3	0.5	0.4
Transportation and warehousing services.....		1.442	127.6	127.7	128.9	4.5	0.9	0.1	0.2	0.8
Transportation of passengers.....		0.002	116.1	117.1	114.1	-1.4	-2.6	4.3	-4.3	-2.7
Transportation and warehousing of goods.....		1.440	127.6	127.7	128.9	4.5	0.9	0.1	0.2	0.8
Services less trade, transportation, and warehousing.....		2.550	98.2	99.0	98.5	-1.0	-0.5	-0.2	1.1	-0.6
Construction.....		0.424	106.1	106.6	106.8	1.4	0.2	-0.1	0.1	0.2
Inputs to stage 2 services producers.....		33.454	106.0	105.8	106.0	0.7	0.2	0.1	0.3	0.2
Goods.....		3.572	111.7	111.5	112.0	-1.1	0.4	0.8	0.2	0.2
Foods.....		-	-	-	-	-	-	-	-	-
Energy.....		0.875	138.8	136.5	138.6	-5.9	1.5	3.4	0.2	0.3
Goods excluding foods and energy.....		2.698	105.5	105.7	105.9	0.6	0.2	0.1	0.1	0.1
Services.....		29.654	105.2	105.0	105.2	0.9	0.2	0.1	0.3	0.2
Trade services.....		1.135	108.0	107.4	107.6	0.9	0.2	-0.9	0.0	0.2
Transportation and warehousing services.....		1.661	109.6	109.6	113.6	3.9	3.6	0.1	0.0	3.6
Transportation of passengers.....		0.013	116.1	117.1	114.1	-1.4	-2.6	4.3	-4.3	-2.7
Transportation and warehousing of goods.....		1.648	109.6	109.5	113.6	3.9	3.7	0.0	0.0	3.6
Services less trade, transportation, and warehousing.....		26.858	104.8	104.6	104.6	0.8	0.0	0.1	0.4	-0.1
Construction.....		0.227	106.1	106.6	106.8	1.4	0.2	-0.1	0.1	0.2
Stage 1										
Stage 1 intermediate demand.....		100.000	114.4	115.8	116.8	1.2	0.9	0.4	1.0	0.4
Inputs to stage 1 goods producers.....		47.436	117.2	120.7	122.1	0.4	1.2	0.8	1.8	0.8
Goods.....		37.987	118.5	122.7	124.4	-0.1	1.4	1.0	2.3	1.1
Foods.....		0.670	130.1	127.8	128.5	-5.2	0.5	-0.8	0.3	0.1
Energy.....		11.705	112.2	116.4	118.9	4.1	2.1	0.9	4.4	1.6
Goods excluding foods and energy.....		25.612	121.8	126.1	127.4	-1.8	1.0	1.1	1.4	0.8
Services.....		9.429	110.0	110.6	111.0	2.2	0.4	-0.1	0.1	0.3
Trade services.....		5.786	109.5	110.3	111.1	3.2	0.7	-0.4	0.1	0.7
Transportation and warehousing services.....		1.802	119.0	119.6	119.9	1.4	0.3	0.3	0.0	0.2
Transportation of passengers.....		0.055	116.1	117.1	114.1	-1.3	-2.6	4.2	-4.2	-2.7
Transportation and warehousing of goods.....		1.748	119.1	119.7	120.1	1.5	0.3	0.2	0.2	0.3
Services less trade, transportation, and warehousing.....		1.841	102.4	102.5	101.8	-0.2	-0.7	0.5	-0.2	-0.6
Construction.....		0.020	106.1	106.6	106.8	1.4	0.2	-0.1	0.1	0.2
Inputs to stage 1 services producers.....		45.049	111.8	111.6	112.1	2.4	0.4	0.3	0.2	0.1
Goods.....		14.782	113.5	112.8	113.6	1.0	0.7	0.1	1.0	0.2
Foods.....		0.064	117.4	113.8	114.9	4.3	1.0	-0.6	-2.7	1.0
Energy.....		11.347	114.7	113.5	114.4	0.7	0.8	0.2	1.2	0.1
Goods excluding foods and energy.....		3.372	109.6	110.6	111.1	2.0	0.5	0.0	0.3	0.4
Services.....		30.238	110.9	110.9	111.2	3.1	0.3	0.4	-0.2	0.1
Trade services.....		0.929	108.8	108.3	108.8	1.5	0.5	-0.4	-0.2	0.4
Transportation and warehousing services.....		1.982	123.4	126.3	126.0	2.4	-0.2	0.9	-1.0	0.2
Transportation of passengers.....		0.419	116.1	117.0	114.1	-1.3	-2.5	4.1	-4.1	-2.7
Transportation and warehousing of goods.....		1.564	125.4	128.8	129.3	3.5	0.4	0.0	-0.1	0.8
Services less trade, transportation, and warehousing.....		27.326	110.1	109.9	110.2	3.1	0.3	0.3	-0.1	0.1
Construction.....		0.029	106.1	106.6	106.8	1.4	0.2	-0.1	0.1	0.2
Inputs to stage 1 construction producers.....		7.515	113.2	112.9	113.6	-0.2	0.6	0.1	0.1	0.2
Goods.....		5.120	114.7	114.4	115.4	-0.3	0.9	0.3	0.3	0.3
Energy.....		1.002	137.4	132.6	135.6	-6.2	2.3	1.8	-0.9	-0.2
Goods excluding foods and energy.....		4.118	111.0	111.6	112.3	1.3	0.6	-0.2	0.5	0.5
Services.....		2.396	109.6	109.1	109.1	-0.1	0.0	-0.1	-0.4	-0.2
Trade services.....		1.057	110.2	109.3	109.4	-1.0	0.1	-0.3	-0.9	-0.3
Transportation and warehousing services.....		0.505	113.1	112.9	113.3	0.7	0.4	0.2	0.2	0.1
Transportation of passengers.....		0.017	116.1	117.1	114.1	-1.4	-2.6	4.3	-4.3	-2.7
Transportation and warehousing of goods.....		0.488	113.0	112.8	113.3	0.8	0.4	0.1	0.4	0.2
Services less trade, transportation, and warehousing.....		0.834	106.5	106.4	106.0	0.6	-0.4	0.1	-0.1	-0.4
Special groupings										
Total goods inputs to stage 4 intermediate demand.....	04/10	51.666	109.5	109.5	110.1	0.0	0.5	0.4	0.4	0.4

See footnotes at end of table.

Table 3. Producer price indexes and percent changes for intermediate demand by production flow¹ — Continued

[Nov. 2009=100, unless otherwise indicated]

Grouping	Other index base	Relative Importance Dec. 2013 ²	Unadjusted index			Unadjusted percent change to Feb. 2014 from:		Seasonally adjusted percent change from:		
			Oct. 2013 ³	Jan. 2014 ³	Feb. 2014 ³	Feb. 2013	Jan. 2014	Nov. to Dec.	Dec. to Jan.	Jan. to Feb.
Total services inputs to stage 4 intermediate demand.....	04/10	47.981	106.8	107.0	107.1	1.3	0.1	0.2	-0.1	0.2
Total construction inputs to stage 4 intermediate demand.....	04/10	0.352	105.2	105.7	105.9	1.4	0.2	-0.2	0.2	0.1
Total foods inputs to stage 4 intermediate demand.....	04/10	4.635	116.9	117.2	117.7	-2.0	0.4	-0.1	1.4	0.5
Total energy goods inputs to stage 4 intermediate demand.....	04/10	8.338	116.2	114.2	115.5	-4.0	1.1	1.9	0.6	0.1
Total goods less foods and energy inputs to stage 4 intermediate demand. ...	04/10	38.694	107.3	107.7	108.1	1.1	0.4	0.1	0.3	0.3
Total goods inputs to stage 3 intermediate demand.....	04/10	54.499	112.2	113.4	114.8	1.8	1.2	0.3	1.5	0.8
Total services inputs to stage 3 intermediate demand.....	04/10	44.998	106.0	106.7	107.1	0.8	0.4	0.0	0.3	0.4
Total construction inputs to stage 3 intermediate demand.....	04/10	0.503	105.2	105.7	105.9	1.4	0.2	-0.2	0.2	0.1
Total foods inputs to stage 3 intermediate demand.....	04/10	11.819	128.2	133.3	135.4	7.0	1.6	-0.3	5.0	1.2
Total energy goods inputs to stage 3 intermediate demand.....	04/10	11.140	113.4	113.1	116.4	-0.3	2.9	1.5	1.2	1.5
Total goods less foods and energy inputs to stage 3 intermediate demand. ...	04/10	31.541	106.5	107.1	107.6	0.7	0.5	0.0	0.3	0.4
Total goods inputs to stage 2 intermediate demand.....	04/10	57.566	110.4	110.4	118.1	5.6	7.0	2.9	-0.1	7.0
Total services inputs to stage 2 intermediate demand.....	04/10	41.782	105.9	105.9	106.1	1.0	0.2	-0.2	0.4	0.2
Total construction inputs to stage 2 intermediate demand.....	04/10	0.651	105.2	105.7	105.9	1.4	0.2	-0.2	0.2	0.1
Total foods inputs to stage 2 intermediate demand.....	04/10	2.715	134.8	131.8	134.3	-23.3	1.9	0.3	-1.2	1.3
Total energy goods inputs to stage 2 intermediate demand.....	04/10	25.093	110.2	110.0	126.5	18.8	15.0	6.3	-0.8	15.2
Total goods less foods and energy inputs to stage 2 intermediate demand. ...	04/10	29.759	108.3	108.8	109.4	-1.6	0.6	0.4	0.6	0.5
Total goods inputs to stage 1 intermediate demand.....	04/10	57.889	104.9	107.1	108.4	0.2	1.2	0.7	1.8	0.7
Total services inputs to stage 1 intermediate demand.....	04/10	42.063	109.6	109.8	110.0	2.6	0.2	0.2	-0.2	0.2
Total construction inputs to stage 1 intermediate demand.....	04/10	0.049	107.2	106.8	107.2	1.4	0.4	-0.4	-0.1	0.4
Total foods inputs to stage 1 intermediate demand.....	04/10	0.734	121.4	119.2	119.9	-4.5	0.6	-0.8	0.1	0.2
Total energy goods inputs to stage 1 intermediate demand.....	04/10	24.054	109.7	110.9	112.7	2.1	1.6	0.6	2.6	0.8
Total goods less foods and energy inputs to stage 1 intermediate demand. ...	04/10	33.102	100.7	103.6	104.5	-1.0	0.9	0.9	1.2	0.7

¹ Further information about the Final Demand-Intermediate Demand Aggregation system is available online at <http://www.bls.gov/ppi/fdidaggregation.htm>

² Comprehensive relative importance figures are initially computed after the publication of December indexes and are recalculated after final December indexes are available. Individual items and subtotals may not add exactly to totals because of rounding differences.

³ The indexes for October 2013 have been recalculated to incorporate late reports and corrections by respondents. All indexes are subject to revision 4 months after original publication.

"-" Data not available.

Table 4. Producer price indexes and percent changes for selected commodity groupings by final demand category¹

[1982=100, unless otherwise indicated]

Grouping	Commodity code	Other index base	Unadjusted index			Unadjusted percent change to Feb. 2014 from:		Seasonally adjusted percent change from:		
			Oct. 2013 ²	Jan. 2014 ²	Feb. 2014 ²	Feb. 2013	Jan. 2014	Nov. to Dec.	Dec. to Jan.	Jan. to Feb.
Final demand.....		11/09	109.7	109.6	109.8	0.9	0.2	0.1	0.2	-0.1
Final demand goods.....		11/09	112.5	112.9	113.5	0.6	0.5	0.4	0.4	0.4
Final demand foods.....		11/09	117.3	117.6	118.0	0.6	0.3	-0.4	1.0	0.6
Fresh fruits and melons ³	01-11		124.9	124.2	123.5	2.5	-0.6	0.2	0.1	-0.6
Fresh and dry vegetables ³	01-13		209.9	192.2	189.8	13.6	-1.2	-13.4	6.9	-1.2
Grains.....	01-2		182.4	177.0	181.4	-32.3	2.5	1.6	-3.2	1.7
Eggs for fresh use.....	01-71-07	12/91	143.5	148.6	171.3	23.4	15.3	4.2	-9.0	19.0
Oilseeds.....	01-83-01		241.9	242.5	243.9	-7.2	0.6	1.3	-3.2	0.2
Bakery products.....	02-11		270.4	272.1	268.5	1.1	-1.3	0.6	0.6	-1.4
Milled rice ³	02-13		209.6	210.9	214.0	2.1	1.5	-0.1	0.9	1.5
Pasta products.....	02-14-02	06/85	202.1	202.0	202.2	-0.9	0.1	-0.5	-1.0	-0.2
Beef and veal.....	02-21-01		197.6	206.5	211.5	7.0	2.4	-0.7	5.2	1.6
Pork.....	02-21-04		163.2	160.4	160.9	6.7	0.3	-2.3	0.6	0.7
Processed young chickens ³	02-22-03		170.2	168.2	162.6	-6.5	-3.3	-1.5	3.3	-3.3
Processed turkeys.....	02-22-06		161.3	158.7	157.9	9.7	-0.5	2.0	-1.3	-0.6
Finfish and shellfish.....	02-23		307.8	348.1	312.4	5.4	-10.3	-4.7	15.1	-11.5
Dairy products.....	02-3		202.1	211.2	219.8	12.0	4.1	1.5	5.0	4.9
Processed fruits and vegetables ³	02-4		191.9	192.3	191.8	-1.0	-0.3	0.4	0.2	-0.3
Confectionery end products ³	02-55		269.5	271.4	271.1	2.4	-0.1	-0.1	0.7	-0.1
Soft drinks ³	02-62		193.3	190.6	195.1	-0.4	2.4	0.2	-1.4	2.4
Roasted coffee ³	02-63-01		194.7	190.4	191.1	-7.3	0.4	-0.5	-1.8	0.4
Shortening and cooking oils.....	02-78		270.3	264.6	259.3	-8.5	-2.0	-0.9	0.6	-2.3
Frozen specialty food ³	02-85		186.4	186.6	187.3	1.0	0.4	-0.9	0.5	0.4
Final demand energy.....		11/09	124.3	123.1	125.5	-1.3	1.9	1.5	0.3	0.5
Liquefied petroleum gas ³	05-32		284.4	304.8	337.5	18.6	10.7	4.0	3.8	10.7
Residential electric power.....	05-41	12/90	163.9	165.5	165.8	3.0	0.2	0.2	1.2	0.2
Residential natural gas.....	05-51	12/90	192.4	203.4	211.6	13.4	4.0	0.2	4.2	4.6
Gasoline.....	05-71		285.0	270.7	277.2	-8.2	2.4	1.4	-1.3	-1.1
Home heating oil and distillates.....	05-73-02		281.4	274.5	277.5	-4.3	1.1	5.8	2.3	-3.9
No. 2 diesel fuel.....	05-73-03		318.4	308.4	322.0	-6.0	4.4	6.2	-1.8	1.9
Final demand goods less foods and energy.....		11/09	108.2	109.0	109.2	1.2	0.2	0.3	0.4	0.2
Alcoholic beverages.....	02-61		191.4	191.5	191.5	0.8	0.0	0.6	-0.2	0.1
Pet food ³	02-94-02		251.5	249.8	250.2	1.1	0.2	0.0	-0.6	0.2
Women's, girls', and infants' apparel ³	03-81-06	12/03	105.4	105.3	105.5	-0.2	0.2	-0.1	-0.4	0.2
Men's and boys' apparel ³	03-81-07	12/03	114.0	114.1	114.2	-1.1	0.1	0.0	0.0	0.1
Textile housefurnishings ³	03-82		143.5	144.5	168.4	17.2	16.5	0.5	0.1	16.5
Footwear ³	04-3		186.9	188.0	190.5	5.5	1.3	-0.1	0.6	1.3
Industrial chemicals ³	06-1		294.5	294.0	299.6	-5.1	1.9	0.9	-0.1	1.9
Pharmaceutical preparations.....	06-38	06/01	182.1	190.8	192.4	6.3	0.8	0.6	2.7	0.9
Soaps and detergents ³	06-71		173.6	177.6	174.0	-1.7	-2.0	0.1	0.1	-2.0
Cleaning and polishing products ³	06-72	06/83	171.9	173.1	172.9	1.5	-0.1	0.1	0.3	-0.1
Cosmetics and other toiletries ³	06-75		155.6	161.5	159.9	3.1	-1.0	-0.1	3.2	-1.0
Tires ³	07-12-01		151.6	153.0	152.4	-0.9	-0.4	-0.1	-0.3	-0.4
Consumer, institutional, and commercial products, n.e.c. ³	07-2B	12/06	127.0	127.5	127.4	0.7	-0.1	-0.2	0.3	-0.1
Sanitary paper products ³	09-15-01		185.1	184.9	183.2	-1.2	-0.9	0.4	-0.3	-0.9
Agricultural machinery and equipment ³	11-1		216.5	220.9	219.8	2.2	-0.5	0.1	1.1	-0.5
Construction machinery and equipment.....	11-2		211.2	212.9	213.0	1.4	0.0	0.0	0.5	0.0
Metal cutting machine tools ³	11-37		194.5	194.9	194.9	1.0	0.0	0.0	0.4	0.0
Metal forming machine tools ³	11-38		215.2	216.9	218.1	2.0	0.6	0.0	0.4	0.6
Tools, dies, jigs, fixtures, and industrial molds ³	11-39		150.9	150.4	150.9	0.6	0.3	-0.5	0.1	0.3
Pumps, compressors, and equipment.....	11-41		235.7	238.3	239.2	2.1	0.4	0.2	0.3	0.1
Industrial material handling equipment ³	11-44		198.4	199.2	200.6	1.7	0.7	0.2	0.2	0.7
Electronic computers and computer equipment ³	11-5	12/98	30.6	30.6	30.5	-3.2	-0.3	-0.3	0.0	-0.3
Textile machinery and equipment ³	11-62		173.8	174.4	174.2	1.5	-0.1	-0.1	0.2	-0.1
Paper industries machinery ³	11-64	06/82	209.9	210.9	210.9	1.8	0.0	0.3	0.1	0.0
Printing trades machinery and equipment ³	11-65		161.2	161.2	159.1	-1.2	-1.3	0.0	0.0	-1.3
Transformers and power regulators ³	11-74		224.0	223.0	223.4	-0.8	0.2	-0.2	0.3	0.2
Communication and related equipment ³	11-76	12/85	107.7	107.4	107.8	0.7	0.4	0.3	0.1	0.4
Electronic components and accessories ³	11-78		69.2	68.8	68.7	0.1	-0.1	0.1	-1.1	-0.1
X-ray and electromedical equipment.....	11-79-05		88.2	88.1	87.6	-0.9	-0.6	0.1	0.1	-0.6
Oil field and gas field machinery ³	11-91		213.4	215.3	218.3	2.5	1.4	0.0	0.6	1.4
Mining machinery and equipment.....	11-92		254.1	254.8	255.9	1.5	0.4	0.5	-0.4	0.5
Office and store machines and equipment ³	11-93		118.4	117.1	118.3	0.8	1.0	0.1	-0.3	1.0
Household furniture.....	12-1		199.7	199.4	199.5	0.5	0.1	-0.1	0.0	-0.1
Commercial furniture ³	12-2		206.3	207.0	207.3	1.8	0.1	-0.2	0.4	0.1
Floor coverings ³	12-3		183.9	184.8	186.7	5.1	1.0	-1.3	2.0	1.0
Household appliances ³	12-4		117.0	116.9	117.5	0.7	0.5	0.2	0.0	0.5

See footnotes at end of table.

Table 4. Producer price indexes and percent changes for selected commodity groupings by final demand category¹ — Continued
 [1982=100, unless otherwise indicated]

Grouping	Commodity code	Other index base	Unadjusted index			Unadjusted percent change to Feb. 2014 from:		Seasonally adjusted percent change from:		
			Oct. 2013 ²	Jan. 2014 ²	Feb. 2014 ²	Feb. 2013	Jan. 2014	Nov. to Dec.	Dec. to Jan.	Jan. to Feb.
Home electronic equipment ³	12-5		51.0	51.0	51.0	0.4	0.0	0.2	0.0	0.0
Silverware and hollowware ³	12-6A	12/11	99.2	99.1	99.1	-1.0	0.0	0.0	-0.1	0.0
Lawn and garden equipment excl. garden tractors ³	12-66		143.4	143.5	143.5	0.8	0.0	-0.1	0.9	0.0
Passenger cars.....	14-11-01		132.1	131.7	131.4	0.1	-0.2	0.2	0.5	-0.2
Light motor trucks.....	14-11-05		165.6	167.4	166.8	2.0	-0.4	0.4	0.1	0.1
Heavy motor trucks ³	14-11-06		211.1	212.6	212.8	2.3	0.1	0.2	0.4	0.1
Motor vehicles parts ³	14-12		125.5	125.5	125.7	-0.1	0.2	0.0	-0.1	0.2
Truck trailers ³	14-14		195.6	196.1	195.7	0.6	-0.2	-0.1	0.4	-0.2
Travel trailers and campers ³	14-16	06/84	183.7	184.5	184.7	2.8	0.1	0.0	0.2	0.1
Aircraft.....	14-21		284.5	286.0	285.8	1.5	-0.1	0.1	0.5	0.0
Ships ³	14-31	12/85	223.6	223.4	223.5	1.6	0.0	0.0	0.0	0.0
Railroad equipment ³	14-4		195.1	196.1	195.5	0.2	-0.3	0.4	-0.6	-0.3
Toys, games, and children's vehicles ³	15-11		150.7	150.7	150.5	0.3	-0.1	0.0	-0.1	-0.1
Sporting and athletic goods ³	15-12		133.8	136.0	135.9	2.3	-0.1	0.3	1.3	-0.1
Cigarettes ³	15-21		797.7	829.3	829.3	4.7	0.0	4.0	0.0	0.0
Mobile homes.....	15-5		260.0	260.1	260.6	2.6	0.2	0.2	0.7	0.2
Medical, surgical & personal aid devices.....	15-6		174.4	174.3	174.8	0.0	0.3	-0.3	-0.1	0.1
Jewelry, platinum and karat gold ³	15-94-02		239.0	237.5	238.9	-1.0	0.6	0.0	-0.3	0.6
Costume jewelry and novelties ³	15-94-04		170.9	171.0	170.9	1.1	-0.1	0.0	0.0	-0.1
Final demand services.....		11/09	108.0	107.6	107.6	1.0	0.0	-0.1	0.1	-0.3
Final demand trade services ⁴		11/09	109.5	107.7	107.3	-0.1	-0.4	-0.8	0.1	-1.0
Machinery and equipment wholesaling ³	57-11-01	03/09	111.3	111.1	110.4	2.2	-0.6	0.2	0.2	-0.6
Furnishings wholesaling ³	57-2	03/09	87.6	90.8	90.1	19.8	-0.8	1.0	2.0	-0.8
Chemicals and allied products wholesaling.....	57-5	03/09	108.6	108.8	111.7	7.0	2.7	1.1	-0.3	2.6
Paper and plastics products wholesaling ³	57-6	03/09	108.8	111.3	110.6	3.9	-0.6	1.0	0.8	-0.6
Apparel wholesaling ³	57-7	03/09	115.0	113.8	115.1	0.2	1.1	-8.1	3.7	1.1
Food and alcohol wholesaling ³	57-8	06/09	97.7	95.6	94.5	-7.6	-1.2	-3.6	1.8	-1.2
Food and alcohol retailing.....	58-1	03/09	117.7	114.2	115.4	0.6	1.1	0.5	-1.8	-1.0
Health, beauty, and optical goods retailing ³	58-2	03/09	122.4	120.1	122.6	1.2	2.1	-0.4	-1.4	2.1
Apparel, jewelry, footwear, and accessories retailing.....	58-3	06/09	120.3	107.2	102.9	-6.0	-4.0	-1.5	3.3	-8.1
Computer hardware, software, and supplies retailing ³	58-4	03/09	87.1	87.7	87.8	-4.5	0.1	0.0	0.1	0.1
TV, video, and photographic equipment and supplies retailing ³	58-5	03/09	90.4	76.7	78.4	16.0	2.2	-33.8	17.5	2.2
Automobiles and automobile parts retailing ³	58-6	06/09	104.4	104.8	103.7	2.2	-1.0	-0.1	-1.6	-1.0
Manufactured (mobile) homes retailing ³	58-7	03/09	99.3	102.5	100.8	3.6	-1.7	-5.6	7.2	-1.7
RVs, trailers, and campers retailing ³	58-8	03/09	114.0	114.5	120.9	11.6	5.6	-0.4	3.1	5.6
Sporting goods, including boats, retailing ³	58-9	03/09	104.2	109.8	114.0	15.3	3.8	1.9	3.9	3.8
Lawn, garden, and farm equipment and supplies retailing ³	58-A	03/09	97.8	98.6	98.6	-4.6	0.0	-0.4	-1.0	0.0
Furniture retailing ³	58-B	03/09	98.4	100.9	97.7	-5.5	-3.2	1.8	-0.1	-3.2
Flooring and floor coverings retailing ³	58-C	03/09	93.2	94.8	98.5	5.5	3.9	10.0	-8.1	3.9
Hardware, building materials, and supplies retailing.....	58-D	03/09	112.9	111.0	110.7	-2.6	-0.3	-0.4	-1.0	-1.3
Major household appliances retailing ³	58-E	03/09	85.9	81.6	83.7	-7.4	2.6	-4.5	1.4	2.6
Fuels and lubricants retailing ³	58-F	06/09	118.5	115.3	112.2	-0.4	-2.7	-15.2	1.9	-2.7
Cleaning supplies and paper products retailing ³	58-G	03/09	140.4	131.2	136.1	-0.7	3.7	-4.2	-1.4	3.7
Book retailing ³	58-H	03/09	123.6	125.3	122.5	1.7	-2.2	0.1	0.7	-2.2
Final demand transportation and warehousing services.....		11/09	115.3	115.6	115.5	0.4	-0.1	1.2	-1.1	-0.2
Rail transportation of freight and mail.....	30-11	12/08	119.2	120.1	120.4	1.7	0.2	0.2	0.1	0.3
Truck transportation of freight.....	30-12	06/09	113.6	113.4	114.0	0.8	0.5	0.1	0.4	0.1
Air transportation of freight ³	30-14	12/08	116.4	117.3	116.6	1.7	-0.6	-1.1	2.4	-0.6
Courier, messenger, and U.S. postal services.....	30-16	06/09	123.0	126.1	129.2	5.0	2.5	0.2	0.1	1.8
Rail transportation of passengers ³	30-21	12/08	113.3	113.4	112.7	1.1	-0.6	0.0	0.0	-0.6
Airline passenger services.....	30-22	12/08	114.1	115.1	112.1	-1.4	-2.6	4.3	-4.3	-2.7
Final demand services less trade, transportation, and warehousing.....		11/09	106.4	106.8	106.9	1.7	0.1	0.2	0.1	0.1
Sales of books ³	33-11		345.9	348.7	348.3	1.8	-0.1	0.1	0.2	-0.1
Sales and subscriptions of periodicals and newspapers ³	33-12	06/09	107.0	106.4	104.4	-1.1	-1.9	-0.2	-0.4	-1.9
Application software publishing ³	34-2	06/09	100.4	98.8	100.4	1.3	1.6	-0.8	-0.8	1.6
Advertising space sales in periodicals, newspapers, directories, and mailing lists.....	36-1	06/09	103.8	105.4	105.3	1.7	-0.1	0.7	0.0	-0.1
Residential wired telecommunication services.....	37-11	06/09	117.8	120.4	120.3	5.3	-0.1	0.3	1.8	0.5
Cellular phone and other wireless telecommunication services.....	37-21	03/09	87.2	86.4	85.9	-3.0	-0.6	0.8	-0.6	-0.9
Cable and satellite subscriber services.....	37-3	12/08	110.3	110.0	110.5	1.1	0.5	0.0	-0.3	0.4
Internet access services ³	37-4	03/09	97.6	97.5	97.3	-0.5	-0.2	0.0	-0.1	-0.2
Bundled wired telecommunications access services ³	37-5	12/11	100.5	100.4	100.5	0.5	0.1	0.0	-0.2	0.1
Consumer loans (partial) ³	39-12	06/09	118.9	120.3	120.2	-3.0	-0.1	1.5	0.7	-0.1
Deposit services (partial) ³	39-2	04/09	56.7	58.6	58.7	2.4	0.2	1.2	1.7	0.2
Other credit intermediation, incl. trust services (partial) ³	39-3	04/09	102.5	101.5	101.7	-0.3	0.2	0.1	-0.2	0.2
Securities brokerage, dealing, investment advice, and related services ³	40-11	06/09	104.9	101.4	101.6	0.5	0.2	-0.5	-2.5	0.2
Portfolio management ³	40-2	12/08	161.1	168.3	168.9	15.8	0.4	1.2	1.8	0.4

See footnotes at end of table.

Table 4. Producer price indexes and percent changes for selected commodity groupings by final demand category¹ — Continued
 [1982=100, unless otherwise indicated]

Grouping	Commodity code	Other index base	Unadjusted index			Unadjusted percent change to Feb. 2014 from:		Seasonally adjusted percent change from:		
			Oct. 2013 ²	Jan. 2014 ²	Feb. 2014 ²	Feb. 2013	Jan. 2014	Nov. to Dec.	Dec. to Jan.	Jan. to Feb.
Life insurance.....	41-11-01	03/09	103.8	103.9	103.9	0.0	0.0	-0.1	0.0	-0.1
Disability insurance, including accidental death.....	41-11-02	03/09	103.7	103.7	103.8	0.1	0.1	0.1	-0.8	0.1
Health and medical insurance.....	41-11-03	03/09	115.5	115.7	115.9	1.2	0.2	0.3	-1.0	0.3
Property and casualty insurance.....	41-11-04	03/09	109.4	109.6	109.7	1.1	0.1	0.2	0.3	0.1
Annuities ³	41-2	03/09	109.2	109.3	109.4	3.7	0.1	-0.4	0.6	0.1
Residential property sales and leases, brokerage fees and commissions.....	43-21	12/08	106.4	111.5	109.8	10.2	-1.5	1.3	2.6	-1.4
Passenger car rental ³	44-1	03/09	93.5	97.5	95.3	-3.2	-2.3	10.2	-4.7	-2.3
Legal services.....	45-1	03/09	113.7	115.0	115.7	2.9	0.6	0.4	-0.1	0.7
Tax preparation and planning ³	45-21-02	04/09	102.9	105.0	105.9	1.5	0.9	1.1	1.4	0.9
Architectural and engineering services.....	45-3	06/09	104.2	104.6	104.8	1.5	0.2	-0.1	0.7	0.2
Management, scientific, and technical consulting services ³	45-4	06/09	103.0	102.8	103.2	-2.2	0.4	-0.4	0.2	0.4
Arrangement of flights (partial) ³	47-1	06/09	108.5	110.3	110.1	5.6	-0.2	-0.3	0.5	-0.2
Arrangement of vehicle rentals and lodging.....	47-2	12/08	90.0	88.1	91.2	4.7	3.5	0.6	-0.6	5.3
Arrangement of cruises and tours ³	47-3	12/08	108.8	112.3	104.7	-1.9	-6.8	0.6	1.8	-6.8
Physician care.....	51-11-01	03/09	106.2	106.6	106.5	0.1	-0.1	-0.2	-0.2	0.0
Medical laboratory and diagnostic imaging care ³	51-11-02	03/09	97.9	97.9	97.8	-1.0	-0.1	0.0	-0.3	-0.1
Home health and hospice care ³	51-11-03	12/08	102.2	102.6	102.5	-0.3	-0.1	0.0	0.4	-0.1
Hospital outpatient care.....	51-11-04	12/08	119.6	120.1	120.7	3.5	0.5	0.0	0.8	0.5
Dental care.....	51-11-05	06/10	106.2	106.5	106.7	1.4	0.2	0.2	-0.2	0.1
Hospital inpatient care.....	51-21-01	12/08	116.4	116.3	116.6	1.4	0.3	0.3	-0.1	0.3
Nursing home care.....	51-21-02	12/08	109.5	110.0	109.6	0.6	-0.4	0.0	-0.3	-0.4
Computer training school services ³	52-1	12/08	102.4	101.3	101.3	-0.4	0.0	0.0	-1.1	0.0
Traveler accommodation services.....	53-11	06/09	105.3	103.0	104.9	4.0	1.8	-0.5	3.5	-1.1
Food and beverages for immediate consumption services (partial).....	54-1	06/09	109.6	109.8	110.1	1.6	0.3	0.5	-0.6	0.1
Motor vehicle repair and maintenance (partial).....	55-2	12/08	118.0	118.0	118.0	0.5	0.0	0.2	-0.7	0.1
Membership dues and admissions and recreation facility use fees (partial).....	56-1	06/09	109.1	109.3	109.3	2.6	0.0	0.1	-0.2	0.3
Recreational activity instruction fees (partial).....	56-2	12/08	113.1	113.1	113.1	1.5	0.0	0.2	-0.1	-0.1
Gaming receipts (partial) ³	56-3	12/08	108.2	106.1	105.7	1.6	-0.4	-1.1	-1.3	-0.4
Mining services ³	60-1	06/85	261.2	259.1	261.5	5.1	0.9	0.2	-0.9	0.9
Final demand construction.....		11/09	109.0	109.7	109.8	3.2	0.1	0.0	0.6	0.1
New warehouse building construction ³	80-11-01	12/04	135.5	136.4	136.4	2.6	0.0	0.0	0.3	0.0
New school building construction ³	80-11-02	12/05	144.4	145.9	145.6	3.6	-0.2	0.1	1.0	-0.2
New office building construction ³	80-11-03	06/06	121.4	122.1	122.1	2.9	0.0	0.0	0.6	0.0
New industrial building construction ³	80-11-04	06/07	114.9	115.6	115.6	4.0	0.0	0.1	0.5	0.0
New health care building construction ³	80-11-05	06/12	103.2	103.0	103.8	3.7	0.8	0.0	0.4	0.8

¹ Further information about the Final Demand-Intermediate Demand Aggregation system is available online at <http://www.bls.gov/ppi/fdidaggregation.htm>

² The indexes for October 2013 have been recalculated to incorporate late reports and corrections by respondents. All indexes are subject to revision 4 months after original publication.

³ Not seasonally adjusted.

⁴ Trade indexes measure changes in margins received by wholesalers and retailers.

"-" Data not available.

NOTE: The term "(partial)" denotes incomplete coverage of the index category.

Table 5. Producer price indexes and percent changes for selected commodity groupings of intermediate demand by commodity type category¹
 [1982=100, unless otherwise indicated]

Grouping	Commodity code	Other index base	Unadjusted index			Unadjusted percent change to Feb. 2014 from:		Seasonally adjusted percent change from:		
			Oct. 2013 ²	Jan. 2014 ²	Feb. 2014 ²	Feb. 2013	Jan. 2014	Nov. to Dec.	Dec. to Jan.	Jan. to Feb.
Processed goods for intermediate demand.....			200.1	200.6	202.4	0.0	0.9	0.5	0.6	0.7
Processed foods and feeds.....			202.2	202.9	204.8	0.5	0.9	0.4	1.7	1.1
Meats.....	02-21		180.6	182.2	184.0	4.5	1.0	-0.8	1.8	0.9
Processed poultry.....	02-22		163.4	161.2	156.8	-3.3	-2.7	-0.7	1.1	-3.4
Dairy products.....	02-3		202.1	211.2	219.8	12.0	4.1	1.5	5.0	4.9
Processed fruits and vegetables ³	02-4		191.9	192.3	191.8	-1.0	-0.3	0.4	0.2	-0.3
Refined sugar and byproducts ³	02-53		163.6	164.1	162.1	-14.5	-1.2	0.4	5.7	-1.2
Fats and oils ³	02-7		273.1	267.0	263.1	-8.0	-1.5	-0.3	0.0	-1.5
Prepared animal feeds ³	02-9		220.7	221.8	224.2	-3.3	1.1	0.9	3.0	1.1
Processed materials less foods and feeds.....			200.1	200.6	202.4	-0.1	0.9	0.5	0.5	0.6
Synthetic fibers ³	03-1		123.7	126.8	126.3	2.7	-0.4	1.4	1.0	-0.4
Processed yarns and threads ³	03-2		140.8	140.4	140.4	-1.3	0.0	-0.5	0.3	0.0
Finished fabrics ³	03-4		151.1	151.0	151.3	0.3	0.2	-0.3	0.3	0.2
Liquefied petroleum gas ³	05-32		284.4	304.8	337.5	18.6	10.7	4.0	3.8	10.7
Commercial electric power.....	05-42		189.6	189.5	190.4	4.0	0.5	0.1	2.0	0.4
Industrial electric power.....	05-43		201.2	215.3	218.0	9.3	1.3	-0.1	8.2	1.1
Commercial natural gas ³	05-52	12/90	183.6	195.3	201.4	8.6	3.1	2.3	2.5	3.1
Industrial natural gas.....	05-53	12/90	170.8	184.6	194.4	9.5	5.3	-0.6	2.5	5.9
Natural gas to electric utilities.....	05-54	12/90	161.9	168.9	181.8	11.5	7.6	-0.8	2.6	8.7
Gasoline.....	05-71		285.0	270.7	277.2	-8.2	2.4	1.4	-1.3	-1.1
Jet fuel.....	05-72-03		294.2	298.5	297.5	-10.1	-0.3	6.1	1.5	0.0
No. 2 diesel fuel.....	05-73-03		318.4	308.4	322.0	-6.0	4.4	6.2	-1.8	1.9
Residual fuels ³	05-74		267.0	262.6	260.6	-10.8	-0.8	1.5	0.8	-0.8
Finished lubricants ³	05-76		399.8	400.9	402.3	-0.4	0.3	0.4	-0.8	0.3
Lubricating oil base stocks ³	05-78	06/09	183.5	180.6	181.0	-10.3	0.2	1.6	0.2	0.2
Asphalt.....	05-81-02	06/85	264.9	242.8	251.3	3.4	3.5	2.0	-0.9	1.2
Basic inorganic chemicals ³	06-13		277.9	273.3	269.7	-5.1	-1.3	-1.1	0.1	-1.3
Basic organic chemicals ³	06-14		298.7	299.0	306.4	-5.1	2.5	1.3	-0.1	2.5
Prepared paint ³	06-21		273.4	272.1	273.9	0.0	0.7	1.1	-1.6	0.7
Paint materials ³	06-22		271.4	258.4	259.5	-8.0	0.4	-2.0	-0.8	0.4
Medicinal and botanical chemicals ³	06-31		183.0	183.1	184.1	6.7	0.5	0.0	1.2	0.5
Biological products, including diagnostics ³	06-37		248.4	249.8	253.3	4.6	1.4	3.5	0.5	1.4
Fats and oils, inedible.....	06-4		274.9	258.7	257.5	-20.5	-0.5	-1.4	-2.7	-2.8
Nitrogenates.....	06-52-01		317.4	315.5	328.1	-13.3	4.0	-0.6	-0.6	3.9
Phosphates ³	06-52-02		213.8	199.1	210.1	-18.5	5.5	-2.6	-1.0	5.5
Other agricultural chemicals ³	06-53		186.5	185.9	187.0	1.8	0.6	0.8	0.4	0.6
Plastic resins and materials ³	06-6		245.8	250.0	254.5	4.3	1.8	-0.4	1.0	1.8
Industrial gases ³	06-79-03		210.7	217.8	218.6	5.7	0.4	1.3	2.4	0.4
Adhesives and sealants ³	06-79-04	10/83	247.0	249.8	249.7	0.8	0.0	0.1	0.8	0.0
Synthetic rubber ³	07-11-02		217.8	223.7	228.5	-4.8	2.1	0.0	0.5	2.1
Tires ³	07-12-01		151.6	153.0	152.4	-0.9	-0.4	-0.1	-0.3	-0.4
Plastic construction products ³	07-21		206.9	208.7	210.2	-0.2	0.7	0.0	0.7	0.7
Unsupported plastic film, sheet, other shapes ³	07-22		215.9	217.3	216.9	2.0	-0.2	0.0	1.3	-0.2
Parts for manufacturing from plastics ³	07-26		148.1	147.9	148.0	4.7	0.1	0.0	-0.1	0.1
Plastic packaging products ³	07-2A	12/06	116.4	115.6	117.1	2.6	1.3	-0.5	-0.2	1.3
Softwood lumber.....	08-11		194.5	204.0	208.5	1.2	2.2	-1.6	-0.6	0.5
Hardwood lumber ³	08-12		221.2	234.7	238.5	24.2	1.6	2.0	2.6	1.6
Millwork.....	08-2		226.9	229.3	230.3	3.0	0.4	0.1	0.7	0.1
Plywood ³	08-3		197.9	193.3	195.1	-2.8	0.9	-2.8	0.4	0.9
Paper.....	09-13		191.0	191.2	192.4	1.1	0.6	0.5	0.2	1.0
Paperboard ³	09-14		249.0	249.0	248.8	5.5	-0.1	0.2	-0.1	-0.1
Paper boxes and containers ³	09-15-03		250.0	244.5	245.1	5.0	0.2	-0.2	-2.2	0.2
Building paper and board ³	09-2		190.2	187.8	187.4	-18.5	-0.2	-2.1	0.3	-0.2
Commercial printing ³	09-47	06/82	170.1	170.5	170.9	0.6	0.2	0.0	0.4	0.2
Foundry and forge shop products ³	10-15		209.2	208.2	209.3	0.4	0.5	-0.3	0.0	0.5
Steel mill products ³	10-17		194.5	198.7	200.1	1.9	0.7	0.3	1.2	0.7
Primary nonferrous metals ³	10-22		195.5	189.1	189.2	-14.4	0.1	-0.1	-1.9	0.1
Secondary nonferrous metals ³	10-24		225.8	226.0	228.3	-8.7	1.0	-0.6	1.1	1.0
Aluminum mill shapes ³	10-25-01		169.4	170.6	174.8	-2.2	2.5	-0.1	0.6	2.5
Copper and brass mill shapes ³	10-25-02		408.3	413.0	406.6	-6.8	-1.5	1.0	1.2	-1.5
Nonferrous wire and cable ³	10-26		254.9	256.2	255.2	-4.3	-0.4	-1.4	1.7	-0.4
Nonferrous foundry shop products ³	10-28		211.5	212.4	213.1	0.8	0.3	-0.1	0.3	0.3
Metal containers ³	10-3		152.2	151.8	150.4	-1.4	-0.9	0.2	-0.1	-0.9
Hardware ³	10-4		204.9	206.1	206.4	1.1	0.1	-0.2	0.5	0.1
Plumbing fixtures and brass fittings.....	10-5		246.5	247.1	251.2	3.1	1.7	0.1	0.0	1.5
Heating equipment ³	10-6		240.1	241.5	241.9	1.3	0.2	0.3	0.1	0.2
Fabricated structural metal products.....	10-7		212.3	213.7	214.2	0.4	0.2	0.1	-0.4	0.1

See footnotes at end of table.

Table 5. Producer price indexes and percent changes for selected commodity groupings of intermediate demand by commodity type category¹ — Continued
 [1982=100, unless otherwise indicated]

Grouping	Commodity code	Other index base	Unadjusted index			Unadjusted percent change to Feb. 2014 from:		Seasonally adjusted percent change from:		
			Oct. 2013 ²	Jan. 2014 ²	Feb. 2014 ²	Feb. 2013	Jan. 2014	Nov. to Dec.	Dec. to Jan.	Jan. to Feb.
Bolts, nuts, screws, rivets, and washers ³	10-81	00/82	186.6	189.0	188.9	0.5	-0.1	0.1	1.3	-0.1
Lighting fixtures ³	10-83	00/82	164.4	165.2	164.7	0.5	-0.3	0.1	0.4	-0.3
Fabricated ferrous wire products.....	10-88	06/82	221.4	221.7	221.7	0.9	0.0	0.3	0.0	-0.4
Other miscellaneous metal products ³	10-89		160.8	160.1	160.2	-0.1	0.1	0.1	-0.4	0.1
Fluid power equipment ³	11-43		239.7	241.2	241.8	1.1	0.2	0.3	0.4	0.2
Mechanical power transmission equipment ³	11-45		256.3	257.1	257.1	1.3	0.0	0.1	0.2	0.0
Air conditioning and refrigeration equipment ³	11-48		174.8	177.2	177.8	2.4	0.3	-0.3	0.7	0.3
Metal valves, except fluid power.....	11-49-02	12/82	287.1	293.4	294.5	4.5	0.4	0.4	1.6	0.1
Ball and roller bearings ³	11-49-05		251.3	250.7	250.8	1.8	0.0	0.1	-0.2	0.0
Wiring devices ³	11-71		227.2	230.3	232.5	2.0	1.0	0.3	0.8	1.0
Motors, generators, motor generator sets ³	11-73		209.0	213.3	211.2	1.6	-1.0	0.0	2.1	-1.0
Switchgear, switchboard, and industrial controls equip. ³	11-75		217.9	219.3	219.4	1.2	0.0	0.2	0.1	0.0
Electronic components and accessories ³	11-78		69.2	68.8	68.7	0.1	-0.1	0.1	-1.1	-0.1
Internal combustion engines ³	11-94		166.7	166.2	166.5	0.8	0.2	0.0	-0.3	0.2
Machine shop products ³	11-95		183.3	183.2	183.2	-0.1	0.0	-0.1	0.1	0.0
Flat glass ³	13-11		118.4	118.1	118.3	1.4	0.2	-0.4	-0.6	0.2
Cement ³	13-22		200.4	204.4	202.8	2.8	-0.8	-0.1	2.0	-0.8
Concrete products.....	13-3		222.3	224.6	226.6	3.7	0.9	0.0	0.6	0.9
Asphalt felts and coatings.....	13-6		242.5	228.9	227.9	-1.3	-0.4	-0.6	-0.4	2.3
Paving mixtures and blocks ³	13-94		320.2	322.3	321.8	1.6	-0.2	-0.3	1.0	-0.2
Motor vehicle parts ³	14-12		125.5	125.5	125.7	-0.1	0.2	0.0	-0.1	0.2
Aircraft engines and engine parts.....	14-23	12/85	215.1	218.2	219.6	1.8	0.6	0.2	-0.1	0.6
Aircraft parts and auxiliary equipment, n.e.c. ³	14-25	06/85	178.1	180.3	180.7	3.1	0.2	0.1	0.6	0.2
Medical, surgical, and personal aid devices.....	15-6		174.4	174.3	174.8	0.0	0.3	-0.3	-0.1	0.1
Unprocessed goods for intermediate demand.....			241.2	245.1	259.3	5.4	5.8	2.3	0.9	5.7
Unprocessed foodstuffs and feedstuffs.....			192.9	198.1	200.3	-0.9	1.1	-0.5	3.5	0.5
Wheat ³	01-21		201.7	189.4	191.3	-10.8	1.0	-0.4	-2.6	1.0
Corn.....	01-22-02		175.4	170.6	174.7	-39.0	2.4	0.7	-3.3	1.8
Slaughter cattle ³	01-31		196.4	209.5	211.7	14.9	1.1	0.0	7.5	1.1
Slaughter hogs.....	01-32		117.5	102.1	107.1	-0.1	4.9	-5.6	-0.8	0.8
Slaughter chickens.....	01-41-02		249.6	270.4	251.2	-11.5	-7.1	-3.0	-0.6	-8.9
Slaughter turkeys.....	01-42		211.3	190.8	193.8	5.7	1.6	4.3	6.3	-2.0
Raw milk.....	01-6		154.7	173.4	184.6	26.6	6.5	4.4	11.4	9.5
Alfalfa hay.....	01-81		356.0	341.3	346.8	-13.8	1.6	-0.4	1.9	0.6
Oilseeds.....	01-83-01		241.9	242.5	243.9	-7.2	0.6	1.3	-3.2	0.2
Raw cane sugar and byproducts.....	02-52-01		151.8	135.2	135.0	-14.3	-0.1	-7.0	-4.9	-0.1
Unprocessed nonfood materials.....			265.6	268.3	291.3	9.3	8.6	3.9	-0.7	8.8
Raw cotton ³	01-51		129.8	126.6	127.8	1.8	0.9	-5.3	2.0	0.9
Hides and skins ³	04-1		298.1	310.4	302.1	-0.1	-2.7	1.7	0.8	-2.7
Coal.....	05-1		203.5	204.7	202.8	-3.0	-0.9	0.6	-4.3	-0.6
Natural gas ³	05-31		149.5	182.8	240.4	74.0	31.5	7.8	14.5	31.5
Crude petroleum.....	05-61		285.9	259.2	284.3	3.4	9.7	6.8	-7.6	10.6
Logs, bolts, timber, pulpwood, and woodchips ³	08-5		239.9	241.6	241.9	2.4	0.1	0.0	0.3	0.1
Wastepaper.....	09-12		373.7	352.7	357.0	0.1	1.2	-4.1	0.4	-2.5
Iron ore ³	10-11		127.6	133.3	133.3	9.3	0.0	-0.1	4.5	0.0
Iron and steel scrap ³	10-12		513.7	603.0	581.9	13.0	-3.5	5.9	4.8	-3.5
Nonferrous metal ores ³	10-21	12/83	315.5	308.2	311.2	-14.8	1.0	-3.4	0.9	1.0
Copper base scrap.....	10-23-01		572.6	577.1	569.9	-8.5	-1.2	-2.2	0.1	-3.9
Aluminum base scrap.....	10-23-02		218.3	222.2	227.2	-5.8	2.3	-1.0	2.9	0.3
Construction sand, gravel, and crushed stone.....	13-21		281.0	284.4	286.6	3.7	0.8	0.0	0.7	0.8
Services for intermediate demand.....			107.6	107.8	108.0	1.2	0.2	0.1	0.0	0.2
Trade services for intermediate demand ⁴			109.3	109.1	109.1	0.6	0.0	-0.3	-0.3	-0.1
Machinery and equipment parts and supplies wholesaling ³	57-11-02	03/09	108.8	108.7	108.0	2.2	-0.6	0.5	0.5	-0.6
Building materials, paint, and hardware wholesaling ³	57-3	03/09	91.6	87.0	88.7	-3.4	2.0	0.3	-4.9	2.0
Metals, minerals, and ores wholesaling ³	57-4	03/09	134.1	138.7	139.0	0.1	0.2	-3.1	1.7	0.2
Chemicals and allied products wholesaling.....	57-5	03/09	108.6	108.8	111.7	7.0	2.7	1.1	-0.3	2.6
Paper and plastics products wholesaling ³	57-6	03/09	108.8	111.3	110.6	3.9	-0.6	1.0	0.8	-0.6
Food wholesaling ³	57-81-01	03/09	95.3	93.2	91.9	-7.9	-1.4	-3.6	1.7	-1.4
Automotive parts, including tires, retailing ³	58-61-02	03/09	110.9	112.6	111.9	5.6	-0.6	0.5	-2.1	-0.6
Hardware, building material, and supplies retailing.....	58-D	03/09	112.9	111.0	110.7	-2.6	-0.3	-0.4	-1.0	-1.3
Transportation and warehousing services for intermediate demand.....			116.3	117.4	118.5	2.3	0.9	0.3	-0.3	1.0
Rail transportation of freight and mail.....	30-11	12/08	119.2	120.1	120.4	1.7	0.2	0.2	0.1	0.3
Truck transportation of freight.....	30-12	06/09	113.6	113.4	114.0	0.8	0.5	0.1	0.4	0.1
Water transportation of freight ³	30-13	06/09	118.6	115.3	120.4	-2.8	4.4	-3.1	0.6	-0.9
Air transportation of freight ³	30-14	12/08	116.4	117.3	116.6	1.7	-0.6	-1.1	2.4	-0.6
Pipeline transportation of petroleum products ³	30-15-01	06/09	138.4	138.7	140.1	6.2	1.0	0.0	0.1	1.0
U.S. Postal Service ³	30-16-01	06/89	203.0	203.0	214.2	5.5	5.5	0.0	0.0	5.5

See footnotes at end of table.

Table 5. Producer price indexes and percent changes for selected commodity groupings of intermediate demand by commodity type category¹ — Continued
 [1982=100, unless otherwise indicated]

Grouping	Commodity code	Other index base	Unadjusted index			Unadjusted percent change to Feb. 2014 from:		Seasonally adjusted percent change from:		
			Oct. 2013 ²	Jan. 2014 ²	Feb. 2014 ²	Feb. 2013	Jan. 2014	Nov. to Dec.	Dec. to Jan.	Jan. to Feb.
Courier and messenger services, except air mail.....	30-16-02	04/09	132.3	139.3	139.3	4.8	0.0	0.2	-0.1	0.6
Air mail and package delivery services, excluding by USPS.....	30-16-03	04/09	142.6	147.2	148.4	4.6	0.8	-0.1	-0.3	1.8
Transportation of passengers (partial).....	30-2	06/09	123.8	124.7	121.6	-1.3	-2.5	4.7	-4.4	-2.8
Services related to water transportation ³	31-1	06/09	111.6	113.1	113.0	1.3	-0.1	-0.4	0.4	-0.1
Arrangement of freight and cargo ³	31-31	12/08	106.0	106.1	106.1	1.1	0.0	-0.1	0.0	0.0
Warehousing, storage, and related services ³	32-1	12/08	96.7	96.1	97.5	0.1	1.5	0.1	0.0	1.5
Services less trade, transportation, and warehousing for intermediate demand.....		11/09	105.6	105.7	105.7	1.1	0.0	0.1	0.3	0.0
Network compensation from broadcast TV, cable TV, radio ³	35	06/09	110.2	110.2	110.2	-0.4	0.0	0.0	0.0	0.0
Advertising space sales in periodicals and newspapers.....	36-11	06/09	102.7	104.7	104.6	2.0	-0.1	0.8	-0.1	-0.1
Advertising space sales in directories and mail lists.....	36-12	12/08	109.4	109.4	109.5	0.6	0.1	0.2	0.0	0.1
Television advertising time sales.....	36-2	06/09	112.5	107.9	107.8	-3.0	-0.1	0.4	1.4	0.0
Radio advertising time sales ³	36-3	03/09	105.5	99.5	99.9	0.8	0.4	0.4	-3.5	0.4
Internet advertising space sales, excluding Internet ads sold by print publishers ³	36-5	12/09	84.7	86.2	84.5	-4.5	-2.0	-0.7	1.4	-2.0
Business wired telecommunication services ³	37-12	06/09	96.0	95.9	95.9	-0.4	0.0	0.1	-0.1	0.0
Cellular phone and other wireless telecommunication services.....	37-21	03/09	87.2	86.4	85.9	-3.0	-0.6	0.8	-0.6	-0.9
Cable and satellite subscriber services.....	37-3	12/08	110.3	110.0	110.5	1.1	0.5	0.0	-0.3	0.4
Bundled wired telecommunication access services ³	37-5	12/11	100.5	100.4	100.5	0.5	0.1	0.0	-0.2	0.1
Data processing and related services ³	38-1	06/09	100.8	100.8	100.9	0.4	0.1	0.0	0.0	0.1
Business loans (partial) ³	39-11	04/09	212.8	215.3	210.5	-6.5	-2.2	-1.8	3.6	-2.2
Deposit services (partial) ³	39-2	04/09	56.7	58.6	58.7	2.4	0.2	1.2	1.7	0.2
Other credit intermediation, incl. trust services (partial) ³	39-3	04/09	102.5	101.5	101.7	-0.3	0.2	0.1	-0.2	0.2
Securities brokerage, dealing, investment advice, and related ³	40-11	06/09	104.9	101.4	101.6	0.5	0.2	-0.5	-2.5	0.2
Portfolio management ³	40-2	12/08	161.1	168.3	168.9	15.8	0.4	1.2	1.8	0.4
Investment banking ³	40-3	12/08	133.4	133.2	133.2	3.9	0.0	3.3	0.1	0.0
Life insurance.....	41-11-01	03/09	103.8	103.9	103.9	0.0	0.0	-0.1	0.0	-0.1
Health and medical insurance.....	41-11-03	03/09	115.5	115.7	115.9	1.2	0.2	0.3	-1.0	0.3
Property and casualty insurance.....	41-11-04	03/09	109.4	109.6	109.7	1.1	0.1	0.2	0.3	0.1
Annuities ³	41-2	03/09	109.2	109.3	109.4	3.7	0.1	-0.4	0.6	0.1
Commissions from sales of insurance ³	42-1	06/09	101.7	101.7	102.0	0.6	0.3	0.0	0.1	0.3
Nonresidential real estate rents.....	43-11	06/09	103.9	103.8	104.4	2.8	0.6	0.1	0.2	0.9
Nonresidential property sales and leases ³	43-12	12/08	103.5	104.9	104.6	2.1	-0.3	-0.2	0.7	-0.3
Residential property management fees ³	43-22	12/08	105.5	105.9	105.9	1.2	0.0	0.1	0.4	0.0
Passenger car rental ³	44-1	03/09	93.5	97.5	95.3	-3.2	-2.3	10.2	-4.7	-2.3
Truck, utility trailer, and RV rental and leasing ³	44-2	06/09	109.9	109.9	105.4	-3.2	-4.1	0.0	-0.1	-4.1
Metal treatment services ³	59-1	12/84	177.0	177.4	178.4	0.7	0.6	0.1	0.1	0.6
Construction, mining, and forestry machinery and equipment rental and leasing ³	44-3	03/09	106.9	103.4	98.7	-5.8	-4.5	0.7	-3.9	-4.5
Legal services.....	45-1	03/09	113.7	115.0	115.7	2.9	0.6	0.4	-0.1	0.7
Accounting services (partial).....	45-2	06/09	100.4	101.0	101.4	1.7	0.4	0.1	0.3	0.5
Architectural and engineering services.....	45-3	06/09	104.2	104.6	104.8	1.5	0.2	-0.1	0.7	0.2
Management, scientific, and technical consulting ³	45-4	06/09	103.0	102.8	103.2	-2.2	0.4	-0.4	0.2	0.4
Advertising and related services (partial) ³	45-5	12/08	103.1	103.7	103.6	1.4	-0.1	0.0	0.5	-0.1
Permanent placement services ³	46-1	03/09	105.5	105.1	104.9	3.2	-0.2	-0.8	0.8	-0.2
Executive search services ³	46-2	12/08	99.1	99.1	99.1	0.1	0.0	0.0	0.0	0.0
Staffing services ³	46-3	06/09	104.7	105.0	105.8	2.2	0.8	0.5	0.1	0.8
Security guard services ³	48-1	03/09	102.1	102.2	103.4	2.1	1.2	0.3	0.0	1.2
Janitorial services ³	49-1	03/09	104.9	105.1	105.5	1.5	0.4	0.1	0.1	0.4
Waste collection.....	50-1	12/08	112.4	113.2	113.5	2.0	0.3	0.3	0.5	0.1
Traveler accommodation services.....	53-11	06/09	105.3	103.0	104.9	4.0	1.8	-0.5	3.5	-1.1
Commercial and industrial machinery and equipment repair and maintenance ³	55-1	03/09	113.4	113.7	113.9	3.0	0.2	-0.1	0.3	0.2
Aircraft repair and maintenance.....	55-4	04/09	109.7	109.8	109.8	0.7	0.0	0.1	-0.6	0.0
Construction for intermediate demand.....		11/09	106.1	106.6	106.8	1.4	0.2	-0.1	0.1	0.2
Maintenance and repair of non-residential buildings (partial).....	80-2	12/10	107.2	107.7	108.0	1.5	0.3	-0.2	0.2	0.1

¹ Further information about the Final Demand-Intermediate Demand Aggregation system is available online at <http://www.bls.gov/ppi/fdidaggregation.htm>

² The indexes for October 2013 have been recalculated to incorporate late reports and corrections by respondents. All indexes are subject to revision 4 months after original publication.

³ Not seasonally adjusted.

⁴ Trade indexes measure changes in margins received by wholesalers and retailers.

"-" Data not available.

NOTE: The term "(partial)" denotes incomplete coverage of the index category.

Table 6. Producer price indexes and percent changes for selected commodity groupings of intermediate demand by production flow category¹
 [1982=100, unless otherwise indicated]

Grouping	Commodity code	Other index base	Unadjusted index			Unadjusted percent change to Feb. 2014 from:		Seasonally adjusted percent change from:		
			Oct. 2013 ²	Jan. 2014 ²	Feb. 2014 ²	Feb. 2013	Jan. 2014	Nov. to Dec.	Dec. to Jan.	Jan. to Feb.
Stage 4 intermediate demand.....		11/09	110.1	110.2	110.6	0.7	0.4	0.3	0.2	0.3
Stage 4 intermediate demand goods.....		04/10	109.5	109.5	110.1	0.0	0.5	0.4	0.4	0.4
Grains.....	01-2		182.4	177.0	181.4	-32.3	2.5	1.6	-3.2	1.7
Meats.....	02-21		180.6	182.2	184.0	4.5	1.0	-0.8	1.8	0.9
Unprocessed and packaged fish.....	02-23		307.8	348.1	312.4	5.4	-10.3	-4.7	15.1	-11.5
Dairy products.....	02-3		202.1	211.2	219.8	12.0	4.1	1.5	5.0	4.9
Commercial electric power.....	05-42		189.6	189.5	190.4	4.0	0.5	0.1	2.0	0.4
Commercial natural gas ³	05-52	12/90	183.6	195.3	201.4	8.6	3.1	2.3	2.5	3.1
Gasoline.....	05-71		285.0	270.7	277.2	-8.2	2.4	1.4	-1.3	-1.1
Jet fuel.....	05-72-03		294.2	298.5	297.5	-10.1	-0.3	6.1	1.5	0.0
No. 2 diesel fuel.....	05-73-03		318.4	308.4	322.0	-6.0	4.4	6.2	-1.8	1.9
Basic organic chemicals ³	06-14		298.7	299.0	306.4	-5.1	2.5	1.3	-0.1	2.5
Prepared paint ³	06-21		273.4	272.1	273.9	0.0	0.7	1.1	-1.6	0.7
Medicinal and botanical chemicals ³	06-31		183.0	183.1	184.1	6.7	0.5	0.0	1.2	0.5
Biological products for human use ³	06-37-19	06/09	116.1	115.8	116.7	2.3	0.8	-0.3	0.2	0.8
Pharmaceutical preparations.....	06-38	06/01	182.1	190.8	192.4	6.3	0.8	0.6	2.7	0.9
Plastic construction products ³	07-21	00/82	206.9	208.7	210.2	-0.2	0.7	0.0	0.7	0.7
Unsupported plastic film, sheet, and other shapes ³	07-22		215.9	217.3	216.9	2.0	-0.2	0.0	1.3	-0.2
Parts for manufacturing from plastics ³	07-26		148.1	147.9	148.0	4.7	0.1	0.0	-0.1	0.1
Plastic packaging products ³	07-2A	12/06	116.4	115.6	117.1	2.6	1.3	-0.5	-0.2	1.3
Lumber.....	08-1	00/82	200.4	211.2	215.4	9.8	2.0	-0.7	1.4	0.9
Millwork.....	08-2		226.9	229.3	230.3	3.0	0.4	0.1	0.7	0.1
Sanitary paper products ³	09-15-01		185.1	184.9	183.2	-1.2	-0.9	0.4	-0.3	-0.9
Paper boxes and containers ³	09-15-03		250.0	244.5	245.1	5.0	0.2	-0.2	-2.2	0.2
Commercial printing ³	09-47	06/82	170.1	170.5	170.9	0.6	0.2	0.0	0.4	0.2
Steel mill products ³	10-17		194.5	198.7	200.1	1.9	0.7	0.3	1.2	0.7
Nonferrous wire and cable ³	10-26		254.9	256.2	255.2	-4.3	-0.4	-1.4	1.7	-0.4
Fabricated structural metal products.....	10-7		212.3	213.7	214.2	0.4	0.2	0.1	-0.4	0.1
Other miscellaneous metal products ³	10-89		160.8	160.1	160.2	-0.1	0.1	0.1	-0.4	0.1
Air conditioning and refrigeration equipment ³	11-48		174.8	177.2	177.8	2.4	0.3	-0.3	0.7	0.3
Electronic components and accessories ³	11-78		69.2	68.8	68.7	0.1	-0.1	0.1	-1.1	-0.1
Miscellaneous electrical machinery and equipment ³	11-79		118.5	118.3	118.0	-0.7	-0.3	-0.1	0.0	-0.3
Internal combustion engines ³	11-94		166.7	166.2	166.5	0.8	0.2	0.0	-0.3	0.2
Machine shop products ³	11-95		183.3	183.2	183.2	-0.1	0.0	-0.1	0.1	0.0
Concrete ingredients and related products.....	13-2		246.7	250.2	251.2	3.4	0.4	0.0	1.0	0.4
Concrete products.....	13-3		222.3	224.6	226.6	3.7	0.9	0.0	0.6	0.9
Prepared asphalt, tar roofing and siding products.....	13-61		235.7	221.3	220.2	-0.4	-0.5	-0.9	-0.4	1.4
Paving mixtures and blocks ³	13-94		320.2	322.3	321.8	1.6	-0.2	-0.3	1.0	-0.2
Motor vehicle parts ³	14-12		125.5	125.5	125.7	-0.1	0.2	0.0	-0.1	0.2
Aircraft engines and engine parts.....	14-23	12/85	215.1	218.2	219.6	1.8	0.6	0.2	-0.1	0.6
Aircraft parts and auxiliary equipment, n.e.c. ³	14-25	06/85	178.1	180.3	180.7	3.1	0.2	0.1	0.6	0.2
Medical, surgical and personal aid devices.....	15-6		174.4	174.3	174.8	0.0	0.3	-0.3	-0.1	0.1
Stage 4 intermediate demand services.....		04/10	106.8	107.0	107.1	1.3	0.1	0.2	-0.1	0.2
Truck transportation of freight.....	30-12	06/09	113.6	113.4	114.0	0.8	0.5	0.1	0.4	0.1
Courier, messenger, and U.S. postal services.....	30-16	06/09	123.0	126.1	129.2	5.0	2.5	0.2	0.1	1.8
Warehousing, storage, and related services ³	32-1	12/08	96.7	96.1	97.5	0.1	1.5	0.1	0.0	1.5
Advertising space sales in periodicals and newspapers.....	36-11	06/09	102.7	104.7	104.6	2.0	-0.1	0.8	-0.1	-0.1
Business wired telecommunication services ³	37-12	06/09	96.0	95.9	95.9	-0.4	0.0	0.1	-0.1	0.0
Wireless telecommunication services.....	37-2	06/09	89.3	88.5	87.9	-3.0	-0.7	1.0	-0.7	-0.8
Data processing and related services ³	38-1	06/09	100.8	100.8	100.9	0.4	0.1	0.0	0.0	0.1
Business loans (partial) ³	39-11	04/09	212.8	215.3	210.5	-6.5	-2.2	-1.8	3.6	-2.2
Deposit services (partial) ³	39-2	04/09	56.7	58.6	58.7	2.4	0.2	1.2	1.7	0.2
Securities brokerage, dealing, investment advice, and related services ³	40-11	06/09	104.9	101.4	101.6	0.5	0.2	-0.5	-2.5	0.2
Portfolio management ³	40-2	12/08	161.1	168.3	168.9	15.8	0.4	1.2	1.8	0.4
Investment banking ³	40-3	12/08	133.4	133.2	133.2	3.9	0.0	3.3	0.1	0.0
Insurance.....	41-11	06/09	110.2	110.3	110.5	1.0	0.2	0.1	-0.3	0.1
Annuities ³	41-2	03/09	109.2	109.3	109.4	3.7	0.1	-0.4	0.6	0.1
Nonresidential real estate rents.....	43-11	06/09	103.9	103.8	104.4	2.8	0.6	0.1	0.2	0.9
Nonresidential property sales and leases ³	43-12	12/08	103.5	104.9	104.6	2.1	-0.3	-0.2	0.7	-0.3
Nonresidential property management fees ³	43-13	12/08	93.3	93.8	94.6	2.9	0.9	-0.2	-0.1	0.9
Residential property management fees ³	43-22	12/08	105.5	105.9	105.9	1.2	0.0	0.1	0.4	0.0
Construction, mining, and forestry machinery and equipment rental and leasing ³	44-3	03/09	106.9	103.4	98.7	-5.8	-4.5	0.7	-3.9	-4.5
Legal services.....	45-1	03/09	113.7	115.0	115.7	2.9	0.6	0.4	-0.1	0.7
Accounting services (partial).....	45-2	06/09	100.4	101.0	101.4	1.7	0.4	0.1	0.3	0.5
Architectural and engineering services.....	45-3	06/09	104.2	104.6	104.8	1.5	0.2	-0.1	0.7	0.2
Management, scientific, and technical consulting ³	45-4	06/09	103.0	102.8	103.2	-2.2	0.4	-0.4	0.2	0.4

See footnotes at end of table.

Table 6. Producer price indexes and percent changes for selected commodity groupings of intermediate demand by production flow category¹ — Continued
 [1982=100, unless otherwise indicated]

Grouping	Commodity code	Other index base	Unadjusted index			Unadjusted percent change to Feb. 2014 from:		Seasonally adjusted percent change from:		
			Oct. 2013 ²	Jan. 2014 ²	Feb. 2014 ²	Feb. 2013	Jan. 2014	Nov. to Dec.	Dec. to Jan.	Jan. to Feb.
Advertising agency services ³	45-51	12/08	103.1	103.7	103.6	1.4	-0.1	0.0	0.5	-0.1
Staffing services ³	46-3	06/09	104.7	105.0	105.8	2.2	0.8	0.5	0.1	0.8
Janitorial services ³	49-1	03/09	104.9	105.1	105.5	1.5	0.4	0.1	0.1	0.4
Commercial and industrial machinery and equipment repair and maintenance ³	55-1	03/09	113.4	113.7	113.9	3.0	0.2	-0.1	0.3	0.2
Aircraft repair and maintenance.....	55-4	04/09	109.7	109.8	109.8	0.7	0.0	0.1	-0.6	0.0
Machinery and equipment parts and supplies wholesaling ³	57-11-02	03/09	108.8	108.7	108.0	2.2	-0.6	0.5	0.5	-0.6
Building materials, paint, and hardware wholesaling ³	57-3	03/09	91.6	87.0	88.7	-3.4	2.0	0.3	-4.9	2.0
Metals, minerals, and ores wholesaling ³	57-4	03/09	134.1	138.7	139.0	0.1	0.2	-3.1	1.7	0.2
Chemicals and allied products wholesaling.....	57-5	03/09	108.6	108.8	111.7	7.0	2.7	1.1	-0.3	2.6
Paper and plastics products wholesaling ³	57-6	03/09	108.8	111.3	110.6	3.9	-0.6	1.0	0.8	-0.6
Food and alcohol wholesaling ³	57-8	06/09	97.7	95.6	94.5	-7.6	-1.2	-3.6	1.8	-1.2
Metal treatment services ³	59-1	12/84	177.0	177.4	178.4	0.7	0.6	0.1	0.1	0.6
Stage 3 intermediate demand.....		11/09	113.8	114.9	115.9	1.4	0.9	0.1	1.0	0.6
Stage 3 intermediate demand goods.....		04/10	112.2	113.4	114.8	1.8	1.2	0.3	1.5	0.8
Corn.....	01-22-02		175.4	170.6	174.7	-39.0	2.4	0.7	-3.3	1.8
Slaughter cattle ³	01-31		196.4	209.5	211.7	14.9	1.1	0.0	7.5	1.1
Slaughter hogs.....	01-32		117.5	102.1	107.1	-0.1	4.9	-5.6	-0.8	0.8
Slaughter poultry.....	01-4		237.2	249.4	235.3	-8.8	-5.7	-1.8	0.4	-7.5
Raw milk.....	01-6		154.7	173.4	184.6	26.6	6.5	4.4	11.4	9.5
Bituminous coal and lignite.....	05-12		203.4	204.6	202.7	-3.0	-0.9	0.6	-4.3	-0.6
Natural gas ³	05-31		149.5	182.8	240.4	74.0	31.5	7.8	14.5	31.5
Commercial electric power.....	05-42		189.6	189.5	190.4	4.0	0.5	0.1	2.0	0.4
Industrial electric power.....	05-43		201.2	215.3	218.0	9.3	1.3	-0.1	8.2	1.1
Commercial natural gas ³	05-52	12/90	183.6	195.3	201.4	8.6	3.1	2.3	2.5	3.1
Natural gas to electric utilities.....	05-54	12/90	161.9	168.9	181.8	11.5	7.6	-0.8	2.6	8.7
Gasoline.....	05-71		285.0	270.7	277.2	-8.2	2.4	1.4	-1.3	-1.1
No. 2 diesel fuel.....	05-73-03		318.4	308.4	322.0	-6.0	4.4	6.2	-1.8	1.9
Lubricating oil base stocks ³	05-78	06/09	183.5	180.6	181.0	-10.3	0.2	1.6	0.2	0.2
Basic inorganic chemicals ³	06-13		277.9	273.3	269.7	-5.1	-1.3	-1.1	0.1	-1.3
Basic organic chemicals ³	06-14		298.7	299.0	306.4	-5.1	2.5	1.3	-0.1	2.5
Paints and allied products ³	06-2		277.3	273.1	274.6	-2.2	0.5	0.3	-1.3	0.5
Plastic resins and materials ³	06-6		245.8	250.0	254.5	4.3	1.8	-0.4	1.0	1.8
Synthetic rubber ³	07-11-02		217.8	223.7	228.5	-4.8	2.1	0.0	0.5	2.1
Unsupported plastic film, sheet, and other shapes ³	07-22		215.9	217.3	216.9	2.0	-0.2	0.0	1.3	-0.2
Paper.....	09-13		191.0	191.2	192.4	1.1	0.6	0.5	0.2	1.0
Paperboard ³	09-14		249.0	249.0	248.8	5.5	-0.1	0.2	-0.1	-0.1
Converted paper and paperboard products ³	09-15		228.9	228.0	227.7	2.9	-0.1	0.2	-0.7	-0.1
Commercial printing ³	09-47	06/82	170.1	170.5	170.9	0.6	0.2	0.0	0.4	0.2
Foundry and forge shop products ³	10-15		209.2	208.2	209.3	0.4	0.5	-0.3	0.0	0.5
Steel mill products ³	10-17		194.5	198.7	200.1	1.9	0.7	0.3	1.2	0.7
Nonferrous metal ores ³	10-21	12/83	315.5	308.2	311.2	-14.8	1.0	-3.4	0.9	1.0
Nonferrous mill shapes ³	10-25		197.7	197.9	200.1	-3.8	1.1	0.0	0.6	1.1
Nonferrous foundry shop products ³	10-28		211.5	212.4	213.1	0.8	0.3	-0.1	0.3	0.3
Metal containers ³	10-3		152.2	151.8	150.4	-1.4	-0.9	0.2	-0.1	-0.9
Structural, architectural, and pre-engineered metal products ³	10-74		208.2	210.2	209.4	-0.1	-0.4	-0.5	-0.5	-0.4
Bolts, nuts, screws, rivets, and washers ³	10-81		186.6	189.0	188.9	0.5	-0.1	0.1	1.3	-0.1
Other miscellaneous metal products ³	10-89		160.8	160.1	160.2	-0.1	0.1	0.1	-0.4	0.1
General purpose machinery and equipment ³	11-4		219.2	221.2	221.8	2.1	0.3	0.1	0.6	0.3
Electrical machinery and equipment ³	11-7		113.9	113.8	113.8	0.4	0.0	0.3	-0.3	0.0
Construction sand, gravel, and crushed stone.....	13-21		281.0	284.4	286.6	3.7	0.8	0.0	0.7	0.8
Cement ³	13-22		200.4	204.4	202.8	2.8	-0.8	-0.1	2.0	-0.8
Motor vehicle parts ³	14-12		125.5	125.5	125.7	-0.1	0.2	0.0	-0.1	0.2
Stage 3 intermediate demand services.....		04/10	106.0	106.7	107.1	0.8	0.4	0.0	0.3	0.4
Rail transportation of freight and mail.....	30-11	12/08	119.2	120.1	120.4	1.7	0.2	0.2	0.1	0.3
Courier, messenger, and U.S. postal services.....	30-16	06/09	123.0	126.1	129.2	5.0	2.5	0.2	0.1	1.8
Airline passenger services.....	30-22	12/08	114.1	115.1	112.1	-1.4	-2.6	4.3	-4.3	-2.7
Arrangement of freight and cargo ³	31-31	12/08	106.0	106.1	106.1	1.1	0.0	-0.1	0.0	0.0
Freight forwarding ³	31-32-01	12/08	97.4	97.4	98.4	2.7	1.0	0.0	0.0	1.0
Warehousing, storage, and related services ³	32-1	12/08	96.7	96.1	97.5	0.1	1.5	0.1	0.0	1.5
Advertising space sales in periodicals, newspapers, directories, and mailing lists.....	36-1	06/09	103.8	105.4	105.3	1.7	-0.1	0.7	0.0	-0.1
Cable network advertising time sales.....	36-21-02	12/08	108.2	108.1	110.4	-9.4	2.1	-1.1	2.3	1.5
Data processing and related services ³	38-1	06/09	100.8	100.8	100.9	0.4	0.1	0.0	0.0	0.1
Business loans (partial) ³	39-11	04/09	212.8	215.3	210.5	-6.5	-2.2	-1.8	3.6	-2.2
Deposit services (partial) ³	39-2	04/09	56.7	58.6	58.7	2.4	0.2	1.2	1.7	0.2
Securities brokerage, dealing, investment advice, and related services ³	40-11	06/09	104.9	101.4	101.6	0.5	0.2	-0.5	-2.5	0.2

See footnotes at end of table.

Table 6. Producer price indexes and percent changes for selected commodity groupings of intermediate demand by production flow category¹ — Continued
 [1982=100, unless otherwise indicated]

Grouping	Commodity code	Other index base	Unadjusted index			Unadjusted percent change to Feb. 2014 from:		Seasonally adjusted percent change from:		
			Oct. 2013 ²	Jan. 2014 ²	Feb. 2014 ²	Feb. 2013	Jan. 2014	Nov. to Dec.	Dec. to Jan.	Jan. to Feb.
Insurance.....	41-11	06/09	110.2	110.3	110.5	1.0	0.2	0.1	-0.3	0.1
Commissions from sales of insurance ³	42-1	06/09	101.7	101.7	102.0	0.6	0.3	0.0	0.1	0.3
Nonresidential real estate rents.....	43-11	06/09	103.9	103.8	104.4	2.8	0.6	0.1	0.2	0.9
Legal services.....	45-1	03/09	113.7	115.0	115.7	2.9	0.6	0.4	-0.1	0.7
Accounting services (partial).....	45-2	06/09	100.4	101.0	101.4	1.7	0.4	0.1	0.3	0.5
Management, scientific, and technical consulting ³	45-4	06/09	103.0	102.8	103.2	-2.2	0.4	-0.4	0.2	0.4
Advertising agency services ³	45-51	12/08	103.1	103.7	103.6	1.4	-0.1	0.0	0.5	-0.1
Permanent placement services ³	46-1	03/09	105.5	105.1	104.9	3.2	-0.2	-0.8	0.8	-0.2
Staffing services ³	46-3	06/09	104.7	105.0	105.8	2.2	0.8	0.5	0.1	0.8
Security guard services ³	48-1	03/09	102.1	102.2	103.4	2.1	1.2	0.3	0.0	1.2
Janitorial services ³	49-1	03/09	104.9	105.1	105.5	1.5	0.4	0.1	0.1	0.4
Metal treatment services ³	59-1	12/84	177.0	177.4	178.4	0.7	0.6	0.1	0.1	0.6
Stage 2 intermediate demand.....		11/09	112.0	112.1	116.7	3.7	4.1	1.5	0.1	4.2
Stage 2 intermediate demand goods.....		04/10	110.4	110.4	118.1	5.6	7.0	2.9	-0.1	7.0
Corn.....	01-22-02		175.4	170.6	174.7	-39.0	2.4	0.7	-3.3	1.8
Alfalfa hay.....	01-81		356.0	341.3	346.8	-13.8	1.6	-0.4	1.9	0.6
Prepared animal feeds ³	02-9		220.7	221.8	224.2	-3.3	1.1	0.9	3.0	1.1
Natural gas ³	05-31		149.5	182.8	240.4	74.0	31.5	7.8	14.5	31.5
Liquefied petroleum gas ³	05-32		284.4	304.8	337.5	18.6	10.7	4.0	3.8	10.7
Crude petroleum.....	05-61		285.9	259.2	284.3	3.4	9.7	6.8	-7.6	10.6
No. 2 diesel fuel.....	05-73-03		318.4	308.4	322.0	-6.0	4.4	6.2	-1.8	1.9
Industrial chemicals ³	06-1		294.5	294.0	299.6	-5.1	1.9	0.9	-0.1	1.9
Plastic resins and materials ³	06-6		245.8	250.0	254.5	4.3	1.8	-0.4	1.0	1.8
Logs, bolts, timber, pulpwood, and wood chips ³	08-5		239.9	241.6	241.9	2.4	0.1	0.0	0.3	0.1
Paper.....	09-13		191.0	191.2	192.4	1.1	0.6	0.5	0.2	1.0
Paperboard, excluding corrugated paperboard ³	09-14-11	12/82	264.5	264.5	264.3	5.3	-0.1	0.2	-0.2	-0.1
Iron and steel scrap ³	10-12		513.7	603.0	581.9	13.0	-3.5	5.9	4.8	-3.5
Steel mill products ³	10-17		194.5	198.7	200.1	1.9	0.7	0.3	1.2	0.7
Nonferrous metal ores ³	10-21	12/83	315.5	308.2	311.2	-14.8	1.0	-3.4	0.9	1.0
Nonferrous mill shapes ³	10-25		197.7	197.9	200.1	-3.8	1.1	0.0	0.6	1.1
Electrical machinery and equipment ³	11-7		113.9	113.8	113.8	0.4	0.0	0.3	-0.3	0.0
Electronic components and accessories ³	11-78		69.2	68.8	68.7	0.1	-0.1	0.1	-1.1	-0.1
Stage 2 intermediate demand services.....		04/10	105.9	105.9	106.1	1.0	0.2	-0.2	0.4	0.2
Truck transportation of freight.....	30-12	06/09	113.6	113.4	114.0	0.8	0.5	0.1	0.4	0.1
Pipeline transportation of petroleum products ³	30-15-01	12/08	138.4	138.7	140.1	6.2	1.0	0.0	0.1	1.0
U.S. Postal Service ³	30-16-01	06/89	203.0	203.0	214.2	5.5	5.5	0.0	0.0	5.5
Television advertising time sales.....	36-21	06/09	112.5	107.9	107.8	-3.0	-0.1	0.4	1.4	0.0
Radio advertising time sales ³	36-3	03/09	105.5	99.5	99.9	0.8	0.4	0.4	-3.5	0.4
Business wired telecommunication services ³	37-12	06/09	96.0	95.9	95.9	-0.4	0.0	0.1	-0.1	0.0
Wireless telecommunication services.....	37-2	06/09	89.3	88.5	87.9	-3.0	-0.7	1.0	-0.7	-0.8
Bundled wired telecommunications access services ³	37-5	12/11	100.5	100.4	100.5	0.5	0.1	0.0	-0.2	0.1
Loan services (partial) ³	39-1	06/09	140.9	142.2	140.5	-5.4	-1.2	-0.5	2.1	-1.2
Deposit services (partial) ³	39-2	04/09	56.7	58.6	58.7	2.4	0.2	1.2	1.7	0.2
Securities brokerage, dealing, investment advice, and related services ³	40-11	06/09	104.9	101.4	101.6	0.5	0.2	-0.5	-2.5	0.2
Portfolio management ³	40-2	12/08	161.1	168.3	168.9	15.8	0.4	1.2	1.8	0.4
Insurance.....	41-11	06/09	110.2	110.3	110.5	1.0	0.2	0.1	-0.3	0.1
Nonresidential real estate services ³	43-1	06/09	103.6	103.9	104.3	2.7	0.4	0.1	0.2	0.4
Legal services.....	45-1	03/09	113.7	115.0	115.7	2.9	0.6	0.4	-0.1	0.7
Accounting services (partial).....	45-2	06/09	100.4	101.0	101.4	1.7	0.4	0.1	0.3	0.5
Architectural and engineering services.....	45-3	06/09	104.2	104.6	104.8	1.5	0.2	-0.1	0.7	0.2
Management, scientific, and technical consulting ³	45-4	06/09	103.0	102.8	103.2	-2.2	0.4	-0.4	0.2	0.4
Staffing services ³	46-3	06/09	104.7	105.0	105.8	2.2	0.8	0.5	0.1	0.8
Traveler accommodation services.....	53-1	06/09	105.3	103.0	104.9	4.0	1.8	-0.5	3.5	-1.1
Commercial and industrial machinery and equipment repair and maintenance ³	55-1	03/09	113.4	113.7	113.9	3.0	0.2	-0.1	0.3	0.2
Machinery and equipment parts and supplies wholesaling ³	57-11-02	03/09	108.8	108.7	108.0	2.2	-0.6	0.5	0.5	-0.6
Building materials, paint, and hardware wholesaling ³	57-3	03/09	91.6	87.0	88.7	-3.4	2.0	0.3	-4.9	2.0
Metals, minerals, and ores wholesaling ³	57-4	03/09	134.1	138.7	139.0	0.1	0.2	-3.1	1.7	0.2
Chemicals and allied products wholesaling.....	57-5	03/09	108.6	108.8	111.7	7.0	2.7	1.1	-0.3	2.6
Paper and plastics products wholesaling ³	57-6	03/09	108.8	111.3	110.6	3.9	-0.6	1.0	0.8	-0.6
Food and alcohol wholesaling ³	57-8	06/09	97.7	95.6	94.5	-7.6	-1.2	-3.6	1.8	-1.2
Stage 1 intermediate demand.....		11/09	114.4	115.8	116.8	1.2	0.9	0.4	1.0	0.4
Stage 1 intermediate demand goods.....		04/10	104.9	107.1	108.4	0.2	1.2	0.7	1.8	0.7
Bituminous coal and lignite.....	05-12		203.4	204.6	202.7	-3.0	-0.9	0.6	-4.3	-0.6
Commercial electric power.....	05-42		189.6	189.5	190.4	4.0	0.5	0.1	2.0	0.4
Industrial electric power.....	05-43		201.2	215.3	218.0	9.3	1.3	-0.1	8.2	1.1
Industrial natural gas.....	05-53	12/90	170.8	184.6	194.4	9.5	5.3	-0.6	2.5	5.9

See footnotes at end of table.

Table 6. Producer price indexes and percent changes for selected commodity groupings of intermediate demand by production flow category¹ — Continued
 [1982=100, unless otherwise indicated]

Grouping	Commodity code	Other index base	Unadjusted index			Unadjusted percent change to Feb. 2014 from:		Seasonally adjusted percent change from:		
			Oct. 2013 ²	Jan. 2014 ²	Feb. 2014 ²	Feb. 2013	Jan. 2014	Nov. to Dec.	Dec. to Jan.	Jan. to Feb.
Gasoline.....	05-71		285.0	270.7	277.2	-8.2	2.4	1.4	-1.3	-1.1
No. 2 diesel fuel.....	05-73-03		318.4	308.4	322.0	-6.0	4.4	6.2	-1.8	1.9
Lubricating oil base stocks ³	05-78	06/09	183.5	180.6	181.0	-10.3	0.2	1.6	0.2	0.2
Industrial chemicals ³	06-1		294.5	294.0	299.6	-5.1	1.9	0.9	-0.1	1.9
Plastic construction products ³	07-21		206.9	208.7	210.2	-0.2	0.7	0.0	0.7	0.7
Wastepaper.....	09-12		373.7	352.7	357.0	0.1	1.2	-4.1	0.4	-2.5
Commercial printing ³	09-47	06/82	170.1	170.5	170.9	0.6	0.2	0.0	0.4	0.2
Iron and steel scrap ³	10-12		513.7	603.0	581.9	13.0	-3.5	5.9	4.8	-3.5
Steel mill products ³	10-17		194.5	198.7	200.1	1.9	0.7	0.3	1.2	0.7
Primary nonferrous metals ³	10-22		195.5	189.1	189.2	-14.4	0.1	-0.1	-1.9	0.1
Nonferrous scrap.....	10-23		367.5	370.4	374.0	-7.1	1.0	-1.1	1.2	-0.7
Nonferrous wire and cable ³	10-26		254.9	256.2	255.2	-4.3	-0.4	-1.4	1.7	-0.4
Fabricated structural metal products.....	10-7		212.3	213.7	214.2	0.4	0.2	0.1	-0.4	0.1
General purpose machinery and equipment ³	11-4		219.2	221.2	221.8	2.1	0.3	0.1	0.6	0.3
Construction sand, gravel, and crushed stone.....	13-21		281.0	284.4	286.6	3.7	0.8	0.0	0.7	0.8
Stage 1 intermediate demand services.....		04/10	109.6	109.8	110.0	2.6	0.2	0.2	-0.2	0.2
Rail transportation of freight and mail.....	30-11	12/08	119.2	120.1	120.4	1.7	0.2	0.2	0.1	0.3
Truck transportation of freight.....	30-12	06/09	113.6	113.4	114.0	0.8	0.5	0.1	0.4	0.1
Courier, messenger, and U.S. postal services.....	30-16	06/09	123.0	126.1	129.2	5.0	2.5	0.2	0.1	1.8
Book, periodical, and newspaper publishing sales and subscriptions ³	33-1	06/09	109.7	109.8	108.6	0.2	-1.1	0.0	-0.1	-1.1
Advertising space sales in periodicals, newspapers, directories, and mailing lists.....	36-1	06/09	103.8	105.4	105.3	1.7	-0.1	0.7	0.0	-0.1
Business wired telecommunication services ³	37-12	06/09	96.0	95.9	95.9	-0.4	0.0	0.1	-0.1	0.0
Wireless telecommunication services.....	37-2	06/09	89.3	88.5	87.9	-3.0	-0.7	1.0	-0.7	-0.8
Data processing and related services ³	38-1	06/09	100.8	100.8	100.9	0.4	0.1	0.0	0.0	0.1
Securities brokerage, dealing, investment advice, and related services ³	40-11	06/09	104.9	101.4	101.6	0.5	0.2	-0.5	-2.5	0.2
Portfolio management ³	40-2	12/08	161.1	168.3	168.9	15.8	0.4	1.2	1.8	0.4
Investment banking ³	40-3	12/08	133.4	133.2	133.2	3.9	0.0	3.3	0.1	0.0
Insurance.....	41-11	06/09	110.2	110.3	110.5	1.0	0.2	0.1	-0.3	0.1
Architectural and engineering services.....	45-3	06/09	104.2	104.6	104.8	1.5	0.2	-0.1	0.7	0.2
Janitorial services ³	49-1	03/09	104.9	105.1	105.5	1.5	0.4	0.1	0.1	0.4
Waste collection.....	50-1	12/08	112.4	113.2	113.5	2.0	0.3	0.3	0.5	0.1
Traveler accommodation services.....	53-11	06/09	105.3	103.0	104.9	4.0	1.8	-0.5	3.5	-1.1
Commercial and industrial machinery and equipment repair and maintenance ³	55-1	03/09	113.4	113.7	113.9	3.0	0.2	-0.1	0.3	0.2
Machinery and equipment parts and supplies wholesaling ³	57-11-02	03/09	108.8	108.7	108.0	2.2	-0.6	0.5	0.5	-0.6
Building materials, paint, and hardware wholesaling ³	57-3	03/09	91.6	87.0	88.7	-3.4	2.0	0.3	-4.9	2.0
Metals, minerals, and ores wholesaling ³	57-4	03/09	134.1	138.7	139.0	0.1	0.2	-3.1	1.7	0.2
Chemicals and allied products wholesaling.....	57-5	03/09	108.6	108.8	111.7	7.0	2.7	1.1	-0.3	2.6
Paper and plastics products wholesaling ³	57-6	03/09	108.8	111.3	110.6	3.9	-0.6	1.0	0.8	-0.6
Mining services ³	60-1	06/85	261.2	259.1	261.5	5.1	0.9	0.2	-0.9	0.9

¹ Further information about the Final Demand-Intermediate Demand Aggregation system is available online at <http://www.bls.gov/ppi/fdidaggregation.htm>

² The indexes for October 2013 have been recalculated to incorporate late reports and corrections by respondents. All indexes are subject to revision 4 months after original publication.

³ Not seasonally adjusted.

"-" Data not available.

NOTE: The term "(partial)" denotes incomplete coverage of the index category.

Table 7. Producer price indexes for selected final demand and intermediate demand categories, seasonally adjusted

[Nov 2009=100, unless otherwise indicated]

Grouping	Other index base	Index ¹					
		Sept. 2013	Oct. 2013	Nov. 2013	Dec. 2013	Jan. 2014	Feb. 2014
Final demand.....		109.4	109.7	109.6	109.7	109.9	109.8
Final demand goods.....		112.6	112.7	112.5	113.0	113.5	113.9
Final demand foods.....		117.0	117.4	117.1	116.6	117.8	118.5
Final demand energy.....		125.9	125.9	124.8	126.7	127.1	127.7
Final demand goods less foods and energy.....		108.0	108.0	108.1	108.4	108.8	109.0
Final demand services.....		107.6	107.9	107.8	107.7	107.8	107.5
Final demand trade services.....		108.7	108.9	109.2	108.3	108.4	107.3
Final demand transportation and warehousing services.....		115.8	116.1	115.5	116.9	115.6	115.4
Final demand services less trade, transportation, and warehousing.....		106.1	106.4	106.3	106.5	106.6	106.7
Intermediate demand by commodity type							
Processed goods for intermediate demand.....	00/82	200.9	200.6	199.8	200.7	201.9	203.3
Materials and components for manufacturing.....	00/82	187.3	187.1	186.8	187.2	187.7	189.1
Materials and components for construction.....	00/82	223.0	223.2	223.8	223.6	224.7	225.6
Processed fuels and lubricants for intermediate demand.....	00/82	210.2	210.3	207.8	210.8	213.9	216.0
Containers for intermediate demand.....	00/82	217.3	220.4	220.6	220.9	218.3	218.4
Supplies for intermediate demand.....	00/82	192.5	191.3	190.5	191.0	192.4	193.5
Unprocessed goods for intermediate demand.....	00/82	245.6	244.4	239.5	244.9	247.0	261.1
Unprocessed foodstuffs and feedstuffs.....	00/82	193.5	195.7	194.3	193.4	200.2	201.3
Unprocessed nonfood materials except fuel.....	00/82	335.3	329.5	317.9	329.1	318.5	333.7
Unprocessed fuel.....	00/82	164.6	164.1	163.4	171.7	184.3	222.0
Services for intermediate demand.....		107.5	107.7	107.7	107.8	107.8	108.0
Trade services for intermediate demand.....		109.5	109.2	109.8	109.5	109.2	109.1
Transportation and warehousing services for intermediate demand.....		116.7	117.0	116.9	117.3	116.9	118.1
Services less trade, transportation, and warehousing for intermediate demand.....		105.3	105.5	105.4	105.5	105.8	105.8
Intermediate demand by production flow							
Stage 4 intermediate demand.....		110.0	110.2	110.0	110.3	110.5	110.8
Inputs to stage 4 goods producers.....		109.4	109.3	109.1	109.2	109.2	109.4
Inputs to stage 4 services producers.....		109.8	110.2	109.9	110.4	110.7	111.0
Inputs to stage 4 construction producers.....		111.4	111.3	111.3	111.5	111.7	111.9
Stage 3 intermediate demand.....		114.0	114.2	114.1	114.2	115.3	116.0
Inputs to stage 3 goods producers.....		119.3	120.0	119.9	120.0	122.2	123.3
Inputs to stage 3 services producers.....		109.3	109.2	109.0	109.3	109.5	109.9
Inputs to stage 3 construction producers.....		122.7	122.3	121.9	122.7	121.5	120.8
Stage 2 intermediate demand.....		113.5	112.5	110.8	112.5	112.6	117.3
Inputs to stage 2 goods producers.....		117.3	115.7	113.3	115.9	115.9	123.0
Inputs to stage 2 services producers.....		105.8	105.9	105.7	105.8	106.1	106.3
Stage 1 intermediate demand.....		114.8	114.7	115.0	115.5	116.7	117.2
Inputs to stage 1 goods producers.....		118.4	117.7	118.2	119.2	121.4	122.4
Inputs to stage 1 services producers.....		111.3	112.0	112.0	112.3	112.5	112.6
Inputs to stage 1 construction producers.....		113.7	113.6	113.6	113.7	113.8	114.0
Special groupings							
Final demand less foods and energy.....	04/10	106.6	106.8	106.8	106.8	107.0	106.8
Final demand less foods.....	04/10	107.4	107.6	107.6	107.7	107.9	107.8
Final demand less energy.....	04/10	106.9	107.2	107.2	107.1	107.3	107.2
Total finished ²	01/10	108.1	108.4	108.3	108.3	108.6	108.4
Total exports.....	04/10	109.0	108.8	108.6	108.9	109.1	109.3
Total Government purchases.....	04/10	107.8	108.0	107.7	108.3	108.5	108.7
Total private capital investment (goods, services, and construction).....	04/10	106.0	106.0	106.0	106.1	106.3	106.4
Finished goods ²	00/82	197.0	197.3	197.1	197.8	198.9	199.6
Processed materials less foods and feeds.....	00/82	200.6	200.7	200.0	200.9	202.0	203.3
Processed foods and feeds.....	00/82	205.4	201.8	199.4	200.2	203.6	205.8
Processed energy goods.....	00/82	214.4	214.4	211.7	214.7	217.7	219.8
Processed materials less foods and energy.....	00/82	193.5	193.6	193.5	193.8	194.3	195.4
Unprocessed materials less agricultural products.....	00/82	276.1	272.4	264.7	275.6	274.0	299.4
Unprocessed energy materials.....	00/82	242.5	238.2	226.5	239.7	236.1	270.7
Unprocessed nonfood materials less energy.....	00/82	342.7	340.8	345.0	347.1	352.0	349.7
Total goods inputs to stage 4 intermediate demand.....	04/10	109.7	109.7	109.4	109.8	110.2	110.6
Total services inputs to stage 4 intermediate demand.....	04/10	106.5	106.8	106.8	107.0	106.9	107.1
Total goods inputs to stage 3 intermediate demand.....	04/10	112.2	112.7	112.4	112.7	114.4	115.3
Total services inputs to stage 3 intermediate demand.....	04/10	106.3	106.2	106.2	106.2	106.5	106.9
Total goods inputs to stage 2 intermediate demand.....	04/10	112.8	111.2	108.2	111.3	111.2	119.0
Total services inputs to stage 2 intermediate demand.....	04/10	106.0	105.8	105.9	105.7	106.1	106.3
Total goods inputs to stage 1 intermediate demand.....	04/10	105.8	105.4	105.7	106.4	108.3	109.1
Total services inputs to stage 1 intermediate demand.....	04/10	109.2	109.7	109.9	110.1	109.9	110.1

¹ All seasonally adjusted indexes are subject to change up to 5 years after original publication due to the recalculation of seasonal factors each January. The indexes for October 2013 have been recalculated to incorporate late reports and corrections by respondents.

² PPI defines Total finished as including only the personal consumption and private capital investment portions of final demand.

Table 8. Producer price indexes for selected commodity groupings, not seasonally adjusted
 [1982=100, unless otherwise indicated]

Grouping	Commodity code	Other index base	Index			Percent change to Feb. 2014 from:	
			Oct. 2013 ¹	Jan. 2014 ¹	Feb. 2014 ¹	Feb. 2013	Jan. 2014
Goods							
All commodities.....			202.5	203.5	206.0	0.8	1.2
Farm products, processed foods and feeds.....			200.6	202.1	203.4	-0.2	0.6
Farm products.....	01		186.3	188.2	191.2	-3.2	1.6
Processed foods and feeds.....	02		208.1	209.4	210.0	1.2	0.3
Industrial commodities.....			202.5	203.4	206.1	1.0	1.3
Textile products and apparel.....	03		143.3	143.7	145.3	1.6	1.1
Hides, skins, leather, and related products.....	04		216.7	221.2	220.8	3.2	-0.2
Fuels and related products and power.....	05		210.4	209.4	217.7	1.7	4.0
Chemicals and allied products.....	06		276.2	279.4	282.6	-0.4	1.1
Rubber and plastic products.....	07		188.8	189.3	190.0	1.0	0.4
Lumber and wood products.....	08		215.9	219.9	221.8	4.1	0.9
Pulp, paper, and allied products.....	09		250.7	250.0	250.4	1.4	0.2
Metals and metal products.....	10		211.8	215.2	215.3	-0.6	0.0
Machinery and equipment.....	11		135.4	135.8	136.0	0.9	0.1
Furniture and household durables.....	12		161.8	162.0	162.5	1.5	0.3
Nonmetallic mineral products.....	13		218.4	219.9	221.0	2.8	0.5
Transportation equipment.....	14		173.0	173.9	173.8	1.2	-0.1
Miscellaneous products.....	15		239.6	241.9	242.6	1.6	0.3
Industrial commodities less fuels.....			195.4	196.9	197.6	0.8	0.4
Other commodity groupings							
Petroleum products, refined.....	057		290.8	281.1	287.2	-7.7	2.2
Industrial chemicals.....	061		294.5	294.0	299.6	-5.1	1.9
Rubber and rubber products.....	071		179.8	181.3	181.8	-1.8	0.3
Lumber.....	081		200.4	211.2	215.4	9.8	2.0
Iron and steel.....	101		224.9	236.8	235.8	4.3	-0.4
Nonferrous metals.....	102		239.0	238.2	239.7	-7.1	0.6
General purpose machinery and equipment.....	114		219.2	221.2	221.8	2.1	0.3
Electrical machinery and equipment.....	117		113.9	113.8	113.8	0.4	0.0
Electronic components and accessories.....	1178		69.2	68.8	68.7	0.1	-0.1
Aircraft and aircraft equipment.....	142		258.6	261.0	261.5	2.0	0.2
Services and construction							
Transportation services.....	30	06/09	119.8	120.7	121.2	1.5	0.4
Services related to transportation activities.....	31	06/09	109.0	108.6	109.1	0.9	0.5
Warehousing, storage, and related activities.....	32	12/08	96.7	96.1	97.5	0.1	1.5
Publishing sales, excluding software.....	33	06/09	109.1	109.3	108.4	0.5	-0.8
Software publishing.....	34	06/09	90.9	90.1	91.1	0.6	1.1
Network compensation from broadcast and cable television and radio.....	35	06/09	110.2	110.2	110.2	-0.4	0.0
Advertising space and time sales.....	36	06/09	104.7	103.7	103.4	-0.7	-0.3
Telecommunication, cable, and internet user services.....	37	06/09	101.5	101.5	101.4	0.0	-0.1
Data processing and related services.....	38	06/09	100.8	100.8	100.9	0.4	0.1
Credit intermediation services (partial).....	39	06/09	89.1	90.5	89.7	-3.3	-0.9
Investment services.....	40	06/09	123.8	123.3	123.6	5.8	0.2
Insurance and annuities.....	41	06/09	109.6	109.8	109.9	1.3	0.1
Commissions and fees from sales and administration of insurance policies (partial).....	42	06/09	101.7	101.7	102.0	0.6	0.3
Real estate services (partial).....	43	06/09	105.0	106.8	106.5	4.6	-0.3
Rental and leasing of goods (partial).....	44	06/09	100.9	101.7	98.1	-4.0	-3.5
Professional services (partial).....	45	06/09	107.1	107.8	108.3	1.5	0.5
Employment services.....	46	06/09	104.7	105.0	105.7	2.2	0.7
Travel arrangement services.....	47	06/09	105.7	106.6	105.6	2.5	-0.9
Selected security services (partial).....	48	03/09	102.1	102.2	103.4	2.1	1.2
Cleaning and building maintenance services (partial).....	49	03/09	104.9	105.1	105.5	1.5	0.4
Waste collection and remediation services (partial).....	50	12/08	112.4	113.2	113.5	2.0	0.3
Health care services.....	51	06/09	111.3	111.6	111.7	1.4	0.1
Education services (partial).....	52	12/08	102.4	101.3	101.3	-0.4	0.0
Accommodation services.....	53	06/09	105.3	103.0	104.9	4.0	1.8
Food and beverages for immediate consumption services (partial).....	54	06/09	109.6	109.8	110.1	1.6	0.3
Repair and maintenance services (partial).....	55	06/09	113.6	113.7	113.8	1.1	0.1
Entertainment services (partial).....	56	06/09	108.0	107.2	107.0	2.2	-0.2
Wholesale trade services.....	57	06/09	107.6	107.5	107.3	0.6	-0.2
Retail trade services.....	58	06/09	111.8	108.5	108.1	-0.7	-0.4
Metal treatment services.....	59	12/84	177.0	177.4	178.4	0.7	0.6
Mining services.....	60	06/85	261.2	259.1	261.5	5.1	0.9
Contract work on textile products, apparel, and leather.....	61	06/10	104.3	104.1	104.0	-0.1	-0.1
Construction (partial).....	80	06/09	105.8	106.4	106.6	3.0	0.2

¹ The indexes for October 2013 have been recalculated to incorporate late reports and corrections by respondents. All indexes are subject to revision 4 months after original publication.
 "—" Data not available.

NOTE: The term "(partial)" denotes incomplete coverage of the index category.