

Transmission of material in this release is embargoed until
8:30 a.m. (EDT) Thursday, May 10, 2012

USDL-12-0894

Technical information: (202) 691-7101 • MXPinfo@bls.gov • www.bls.gov/mxp
Media contact: (202) 691-5902 • PressOffice@bls.gov

U.S. IMPORT AND EXPORT PRICE INDEXES – APRIL 2012

U.S. import prices declined 0.5 percent in April, the U.S. Bureau of Labor Statistics reported today, following a 1.5 percent increase in March. The April decrease was driven by lower fuel prices which more than offset a small increase in nonfuel prices. The price index for overall exports rose 0.4 percent in April after a 0.8 percent increase the previous month.

Chart 1. One-month percent change in the Import Price Index: April 2011– April 2012

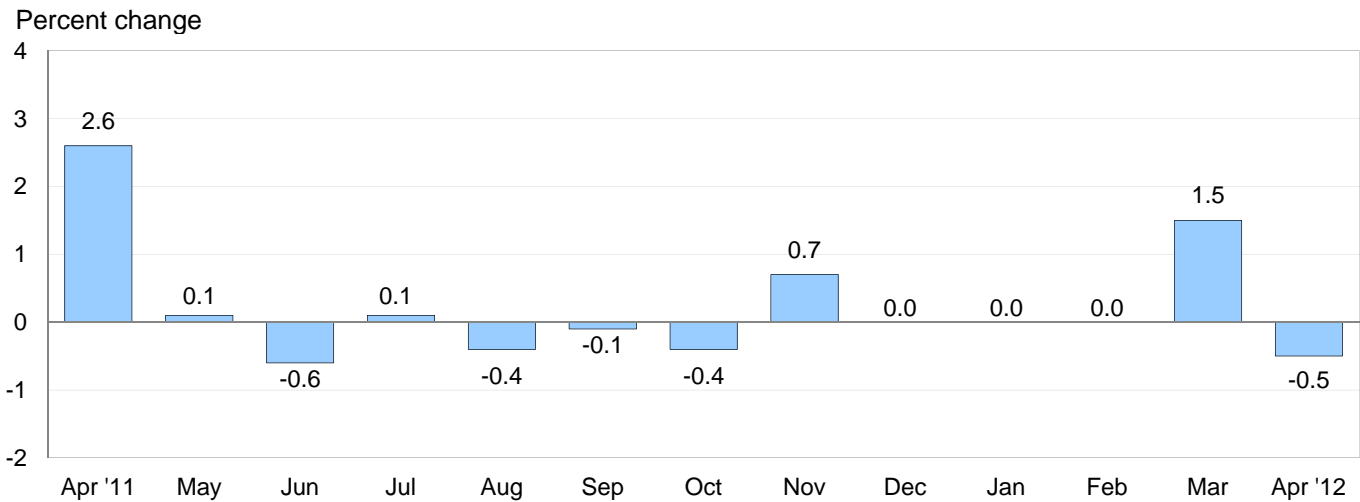
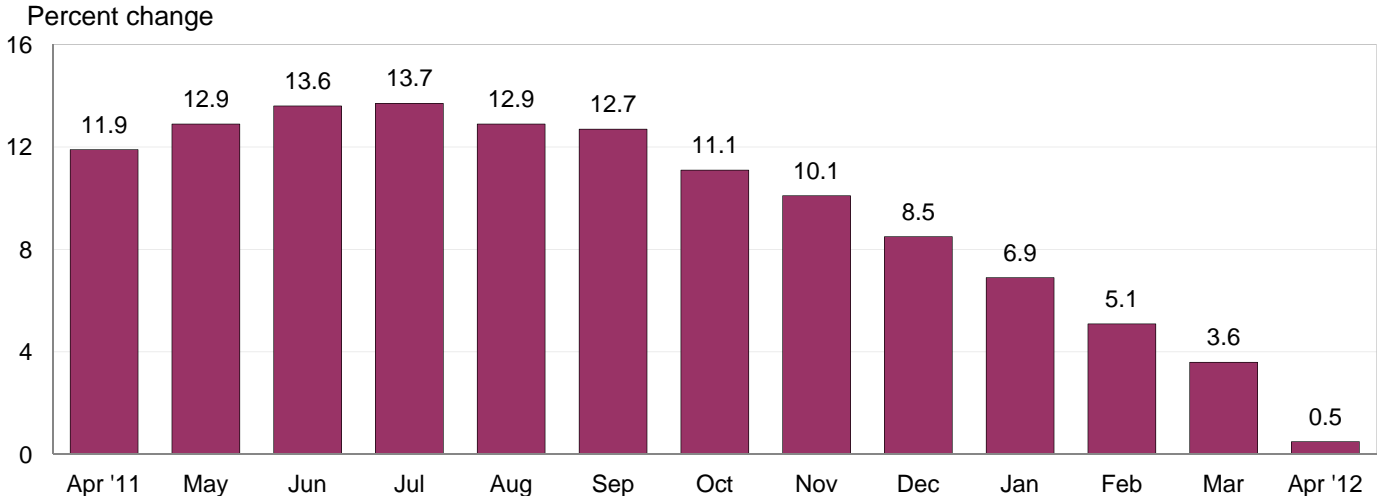


Chart 2. 12-month percent change in the Import Price Index: April 2011– April 2012



All Imports: Prices for U.S. imports fell 0.5 percent in April, the first monthly decrease since a 0.4 percent decline in October 2011 and the largest one-month drop since the index decreased 0.6 percent in June 2011. Despite the April decline, import prices rose 0.5 percent over the past year, although that was the smallest 12-month advance since the index last recorded a year-over-year decrease in October 2009.

Fuel Imports: A 2.1 percent drop in fuel prices led the overall decline in import prices in April. The decrease in fuel prices followed a 4.4 percent increase in March and was the largest decline for the index since a similar 2.1 percent decrease in August 2011. A 1.8 percent decline in petroleum prices and a 14.1 percent drop in natural gas prices each contributed to the April decrease in overall fuel prices. Fuel prices also fell over the past 12 months as a 45.3 percent decline in natural gas prices more than offset higher petroleum prices that ticked up 0.1 percent from April 2011 to April 2012. The decrease in overall fuel prices was the first 12-month decline since the index fell 14.2 percent for the year ended in October 2009.

All Imports Excluding Fuel: The price index for nonfuel prices ticked up 0.1 percent in April after rising 0.5 percent the previous month. Higher prices for nonfuel industrial supplies and materials, automotive vehicles, consumer goods, and foods, feeds, and beverages all contributed to the increase in overall nonfuel prices. Capital goods prices were unchanged. Nonfuel prices rose 1.3 percent over the past 12 months.

Table A. Percent changes

Month	IMPORTS			EXPORTS		
	All imports	Fuel imports	Nonfuel imports	All exports	Agricultural exports	Non-agricultural exports
2011						
April.....	2.6	7.6	0.8	0.8	-0.5	0.9
May.....	0.1	-0.6	0.3	0.4	-1.1	0.5
June.....	-0.6	-2.3	0.0	0.1	0.8	0.2
July.....	0.1	0.1	0.2	-0.4	-4.0	0.1
August.....	-0.4	-2.1	0.2	0.4	1.6	0.3
September.....	-0.1	-1.0	0.2	0.5	1.9	0.3
October.....	-0.4	-0.6	-0.2	-2.0	-6.5	-1.4
November.....	0.7	3.4	-0.2	0.1	1.7	-0.2
December.....	0.0	-0.4	0.1	-0.5	-2.3	-0.2
2012						
January.....	0.0	-0.2	0.2 ^r	0.3 ^r	1.1 ^r	0.2 ^r
February.....	0.0 ^r	-0.1 ^r	0.0	0.5 ^r	-0.4 ^r	0.6 ^r
March.....	1.5 ^r	4.4 ^r	0.5	0.8	2.5 ^r	0.5
April.....	-0.5	-2.1	0.1	0.4	2.0	0.2
Apr. 2010 to 2011.....	11.9	37.3	4.6	9.2	33.9	6.8
Apr. 2011 to 2012.....	0.5	-1.7	1.3	0.7	-3.1	1.2

r Revised

Chart 3. One-month percent change in the Export Price Index: April 2011– April 2012

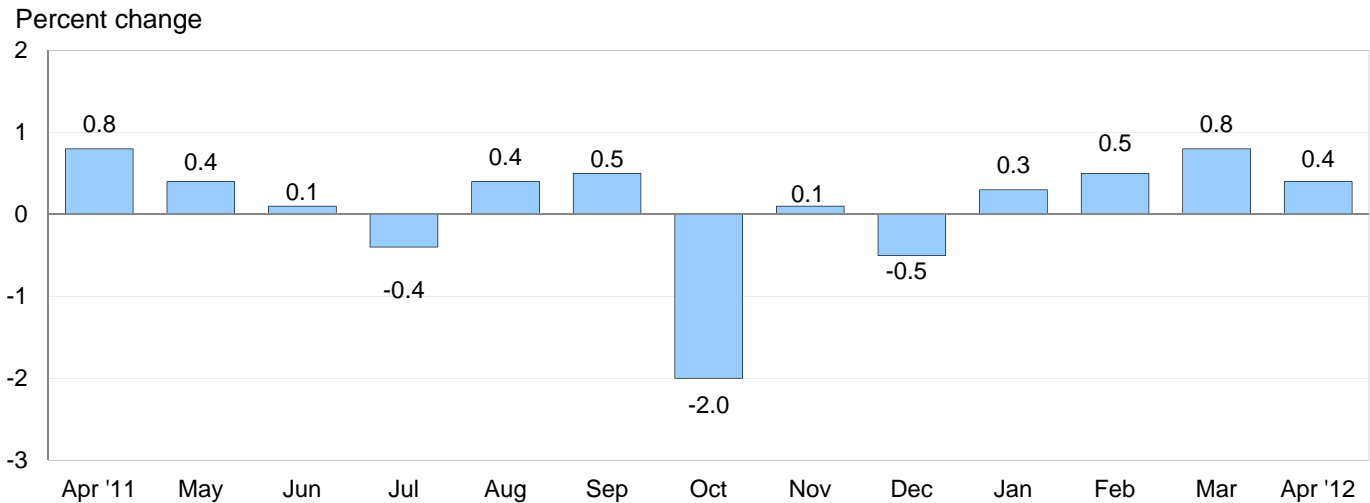
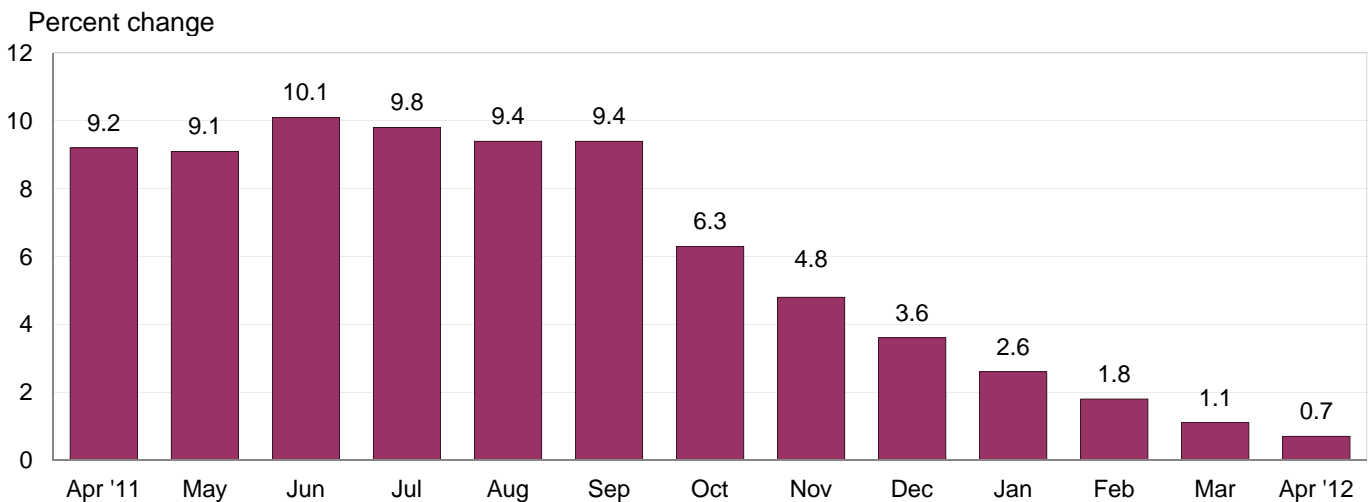


Chart 4. 12-month percent change in the Export Price Index: April 2011– April 2012



All Exports: U.S. export prices increased 0.4 percent in April as agricultural and nonagricultural prices each contributed to the advance. The April rise in overall export prices followed a 1.5 percent increase in the first quarter of 2012. Export prices advanced 0.7 percent for the April 2011-12 period, the smallest year-over-year increase since the index rose 0.4 percent between November 2008 and November 2009. The 12-month increase in April was led by higher nonagricultural prices which more than offset declining agricultural prices over the past year.

Agricultural Exports: Agricultural prices rose 2.0 percent in April after rising 2.5 percent in March. The April advance was led by a 7.4 percent increase in soybean prices. Despite the increases in the past two months, agricultural prices fell 3.1 percent over the past 12 months. That decline was driven by falling cotton, corn, and wheat prices between April 2011 and April 2012.

All Exports Excluding Agriculture: The price index for nonagricultural prices advanced 0.2 percent in April following a 0.5 percent rise the previous month. Rising prices for nonagricultural industrial supplies and materials, as well as automotive vehicles, more than offset lower consumer goods prices. Overall nonagricultural prices increased 1.2 percent for the year ended in April.

SELECTED APRIL HIGHLIGHTS

Import Prices

Nonfuel Industrial Supplies and Materials: Nonfuel industrial supplies and materials prices advanced 0.3 percent in April after increasing 1.6 percent in March. In April, a 13.6 percent increase in agricultural products prices and a 1.5 percent advance in chemicals prices more than offset a 2.3 percent decline in unfinished metals prices. The price index for nonfuel industrial supplies and materials rose 1.5 percent over the past year.

Finished Goods: Prices for imported finished goods were up overall in April, led by a 0.4 percent increase in automotive vehicles prices and a 0.1 percent advance in the price index for consumer goods. Capital goods prices were unchanged in April as a 0.3 percent increase in capital goods prices excluding computers was offset by a 0.5 percent drop in computers, peripherals, and semiconductors prices.

Foods, Feeds, and Beverages: Foods, feeds, and beverages prices ticked up 0.1 percent in April following a 1.8 percent increase the previous month. In April, rising prices for vegetables, coffee, and food oils, up 4.7 percent, 1.4 percent, and 1.3 percent, respectively, more than offset a 2.7 percent drop in meat prices and a 4.1 percent decline in the price index for dairy products.

Imports by Locality of Origin: The price index for imports from China fell 0.3 percent in April, the first monthly decrease since the index fell 0.2 percent in June 2010. Despite the monthly decline, import prices from China have risen 2.0 percent over the past year. Import prices from Canada, the European Union, Mexico, and Japan decreased 1.0 percent, 0.1 percent, 0.5 percent, and 0.4 percent, respectively, in April.

Transportation Services: Import air passenger fares rose 0.7 percent in April after falling 1.0 percent in March. Higher European, Latin American/Caribbean, and Asian fares all contributed to the April increase. The index for import air passenger fares advanced 10.3 percent for the year ended in April. Import air freight prices rose 2.3 percent in April and 1.5 percent over the past year.

Export Prices

Nonagricultural Industrial Supplies and Materials: Nonagricultural industrial supplies and materials prices increased 0.4 percent in April following a 1.2 percent advance in March. The April rise was driven by a 1.5 percent increase in fuel prices and a 0.6 percent rise in chemicals prices.

Finished Goods: Finished goods prices were mixed in April. Automotive vehicles prices rose 0.5 percent, led by a 0.5 percent advance in the price index for parts, engines, bodies and chassis. In contrast, consumer goods prices decreased 0.2 percent in April, while prices for capital goods were unchanged.

Transportation Services: The index for export air passenger fares advanced 1.2 percent in April, driven by a 9.5 percent rise in European fares. Export air passenger fares rose 6.7 percent over the past year. Prices for export air freight increased 0.8 percent in April and 5.1 percent over the past 12 months.

Import and Export Price Index data for May 2012 are scheduled for release on Tuesday, June 12, 2012 at 8:30 a.m. (EDT).

Table 1. U.S. import price indexes and percent changes for selected categories of goods: April 2011 to April 2012

[2000=100, unless otherwise noted]

Description	End Use	Relative importance Mar. 2012 ¹	Index		Percent change				
			Mar. 2012	Apr. 2012	Annual	Monthly			
					Apr. 2011 to Apr. 2012	Dec. 2011 to Jan. 2012	Jan. 2012 to Feb. 2012	Feb. 2012 to Mar. 2012	Mar. 2012 to Apr. 2012
All commodities		100.000	144.3	143.6	0.5	0.0	0.0	1.5	-0.5
All imports excluding food and fuels (Dec. 2010=100)		69.903	103.9	104.0	1.8	0.0	0.2	0.4	0.1
All imports excluding petroleum		75.887	116.7	116.7	0.7	0.0	-0.1	0.3	0.0
All imports excluding fuels (Dec. 2001=100) ..		74.956	121.2	121.3	1.3	0.2	0.0	0.5	0.1
Foods, feeds, & beverages	0	5.053	174.3	174.4	-2.7	2.3	-2.8	1.8	0.1
Agricultural foods, feeds & beverages, excluding distilled beverages.....	00	3.917	196.2	196.4	-3.8	2.5	-3.4	2.1	0.1
Nonagricultural foods (fish, distilled beverages).....	01	1.136	124.6	124.8	1.5	1.4	-0.9	0.2	0.2
Industrial supplies & materials	1	38.208	272.1	268.7	-0.7	-0.5	0.3	3.4	-1.2
Industrial supplies & materials excluding petroleum.....		14.095	167.7	167.1	-2.2	-1.3	0.3	0.9	-0.4
Industrial supplies & materials excluding fuels (Dec. 2001=100).....		13.164	193.0	193.6	1.5	-0.9	1.0	1.6	0.3
Industrial supplies & materials, durable.....		7.867	183.4	181.2	-1.4	-1.0	1.2	1.8	-1.2
Industrial supplies & materials nondurable excluding petroleum.....		5.296	149.7	150.7	-3.1	-1.6	-0.8	-0.1	0.7
Fuels & lubricants.....	10	25.044	371.1	363.4	-1.7	-0.2	-0.1	4.4	-2.1
Petroleum & petroleum products.....	100	24.113	418.5	411.1	0.1	0.0	0.3	4.9	-1.8
Crude.....	10000	18.325	432.7	418.8	-0.9	-0.4	2.3	4.0	-3.2
Fuels, n.e.s.-coals & gas.....	101	0.634	88.2	77.6	-40.4	-5.6	-10.0	-9.7	-12.0
Gas-natural.....	10110	0.528	73.5	63.1	-45.3	-6.6	-10.9	-13.0	-14.1
Paper & paper base stocks.....	11	0.579	114.0	113.0	-4.9	-2.0	0.0	1.3	-0.9
Materials associated with nondurable supplies & materials.....	12	4.823	177.9	182.6	7.8	-0.2	0.6	1.2	2.6
Selected building materials.....	13	0.978	134.4	135.2	2.4	0.5	0.5	1.8	0.6
Unfinished metals related to durable goods.....	14	3.796	284.1	277.6	-6.0	-2.5	1.8	3.1	-2.3
Finished metals related to durable goods. . .	15	1.520	163.9	164.0	3.2	-0.2	1.5	-0.2	0.1
Nonmetals related to durable goods.....	16	1.468	115.3	115.4	2.2	-0.4	0.0	0.5	0.1
Capital goods	2	21.835	93.6	93.6	1.1	0.4	-0.1	0.2	0.0
Electric generating equipment.....	20	2.832	119.5	119.7	2.7	0.4	0.2	0.3	0.2
Nonelectrical machinery.....	21	17.395	86.6	86.5	0.2	0.3	-0.1	0.0	-0.1
Transportation equipment excluding motor vehicles (Dec. 2001=100).....	22	1.608	133.1	133.7	6.1	1.2	0.2	0.9	0.5
Automotive vehicles, parts & engines	3	11.258	113.7	114.1	2.1	0.3	0.1	0.3	0.4
Consumer goods, excluding automotives ..	4	23.646	107.7	107.8	2.4	-0.2	0.1	0.1	0.1
Nondurables, manufactured.....	40	11.319	114.5	115.0	3.8	0.1	-0.1	0.1	0.4
Durables, manufactured.....	41	11.065	100.3	100.0	0.5	-0.3	0.1	0.2	-0.3
Nonmanufactured consumer goods.....	42	1.262	118.0	119.2	8.9	-0.6	1.0	-1.5	1.0

¹ Relative importance figures are based on 2010 trade values.

NOTES: Data may be revised in each of the three months after original publication.

Dash = Not available

Table 2. U.S. export price indexes and percent changes for selected categories of goods: April 2011 to April 2012

[2000=100, unless otherwise noted]

Description	End Use	Relative importance Mar. 2012 ¹	Index		Percent change				
			Mar. 2012	Apr. 2012	Annual Apr. 2011 to Apr. 2012	Monthly			
						Dec. 2011 to Jan. 2012	Jan. 2012 to Feb. 2012	Feb. 2012 to Mar. 2012	Mar. 2012 to Apr. 2012
All commodities		100.000	134.1	134.7	0.7	0.3	0.5	0.8	0.4
Agricultural commodities		10.813	206.9	211.1	-3.1	1.1	-0.4	2.5	2.0
All exports excluding food and fuels (Dec. 2010=100)		81.128	103.5	103.5	0.8	0.1	0.6	0.4	0.0
Nonagricultural commodities		89.189	129.0	129.2	1.2	0.2	0.6	0.5	0.2
Foods, feeds, & beverages	0	9.880	206.0	210.7	1.2	1.3	-0.5	2.7	2.3
Agricultural foods, feeds & beverages, excluding distilled beverages.....	00	9.180	208.6	213.5	0.1	1.3	-0.6	3.0	2.3
Nonagricultural foods (fish, distilled beverages).....	01	0.700	186.1	190.1	18.3	1.1	0.5	-0.4	2.1
Industrial supplies & materials	1	34.925	188.3	189.0	-1.4	-0.4	1.3	1.1	0.4
Industrial supplies & materials, durable.....		12.492	191.2	189.8	0.9	-1.8	2.2	1.2	-0.7
Industrial supplies & materials, nondurable.....		22.433	187.6	189.5	-2.5	0.4	0.8	1.1	1.0
Agricultural industrial supplies & materials..	10	1.633	201.7	202.5	-17.7	0.0	0.6	-0.1	0.4
Nonagricultural industrial supplies & materials		33.293	188.1	188.8	-0.3	-0.4	1.3	1.2	0.4
Fuels & lubricants.....	11	8.994	280.9	285.1	-0.7	1.1	0.1	2.5	1.5
Nonagricultural supplies & materials excluding fuels & building materials.....	12	23.367	176.4	176.3	-0.2	-1.0	1.7	0.8	-0.1
Selected building materials.....	13	0.932	117.2	117.8	0.9	0.2	1.0	0.2	0.5
Capital goods	2	34.359	105.9	105.9	1.6	0.8	0.3	0.2	0.0
Electrical generating equipment.....	20	3.496	113.0	113.0	1.3	-0.4	0.3	0.4	0.0
Nonelectrical machinery.....	21	24.941	95.3	95.3	1.4	1.0	0.0	0.1	0.0
Transportation equipment excluding motor vehicles (Dec. 2001=100).....	22	5.922	148.7	149.2	3.2	0.8	1.0	0.3	0.3
Automotive vehicles, parts & engines	3	8.145	112.5	113.1	2.9	0.2	0.2	0.2	0.5
Consumer goods, excluding automotives ..	4	12.692	116.8	116.6	2.0	0.1	0.0	0.1	-0.2
Nondurables, manufactured.....	40	5.891	115.0	115.1	1.3	0.6	0.1	0.3	0.1
Durables, manufactured.....	41	5.331	114.3	114.0	1.4	0.1	0.5	0.3	-0.3

¹ Relative importance figures are based on 2010 trade values.

NOTES: Data may be revised in each of the three months after original publication.

Dash = Not available

Table 3. U.S. import price indexes and percent changes for selected categories of goods: April 2011 to April 2012

[December 2005=100, unless otherwise noted]

Description	NAICS	Relative importance Mar. 2012 ¹	Index		Percent change				
			Mar. 2012	Apr. 2012	Annual Apr. 2011 to Apr. 2012	Monthly			
						Dec. 2011 to Jan. 2012	Jan. 2012 to Feb. 2012	Feb. 2012 to Mar. 2012	Mar. 2012 to Apr. 2012
Nonmanufactured articles.....		21.512	181.8	176.5	-3.6	-0.6	1.1	3.6	-2.9
Agriculture, forestry, fishing and hunting...	11	1.809	173.4	176.7	-10.3	1.1	-5.3	3.4	1.9
Crop production.....	111	1.277	179.0	183.9	-11.2	2.8	-7.9	4.1	2.7
Mining.....	21	19.703	182.2	176.1	-2.9	-0.7	1.7	3.7	-3.3
Mining (except oil and gas) (Dec. 2006=100).....	212	0.325	146.2	145.6	-5.1	0.3	-1.8	1.2	-0.4
Manufactured articles.....		78.022	118.8	119.1	1.8	0.2	-0.3	0.8	0.3
Manufactured goods, part 1.....	31	10.648	125.3	126.1	5.1	0.8	0.2	0.2	0.6
Food manufacturing.....	311	3.000	161.5	164.6	7.0	1.6	-0.1	1.2	1.9
Beverage and tobacco product manufacturing.....	312	0.823	111.6	111.5	0.6	0.1	-0.2	-0.3	-0.1
Textile product mills.....	314	0.847	115.5	116.5	0.8	-0.6	-0.1	-1.9	0.9
Apparel manufacturing.....	315	3.994	112.0	112.1	5.0	0.4	0.2	-0.1	0.1
Leather and allied product manufacturing. . .	316	1.590	119.4	119.5	6.9	1.4	0.7	0.1	0.1
Manufactured goods, part 2.....	32	17.789	141.0	142.8	2.7	0.4	-1.9	2.5	1.3
Wood product manufacturing.....	321	0.587	112.2	113.3	1.9	0.7	0.7	3.0	1.0
Paper manufacturing.....	322	1.067	111.4	110.7	-1.3	-1.3	0.0	1.0	-0.6
Petroleum and coal products manufacturing.....	324	4.842	182.0	187.2	2.7	2.0	-7.0	7.2	2.9
Chemical manufacturing.....	325	8.549	134.7	136.0	3.3	-0.6	0.1	0.8	1.0
Plastics and rubber products manufacturing.....	326	1.843	127.0	127.3	4.3	1.1	-0.2	0.0	0.2
Nonmetallic mineral product manufacturing.....	327	0.813	129.5	129.6	2.0	0.4	0.2	0.2	0.1
Manufactured goods, part 3.....	33	49.585	110.6	110.3	0.6	0.0	0.2	0.5	-0.3
Primary metal manufacturing.....	331	4.389	186.1	182.8	-3.7	-2.4	2.0	2.8	-1.8
Fabricated metal product manufacturing. . .	332	2.492	129.8	129.4	4.2	0.1	0.4	0.0	-0.3
Machinery manufacturing.....	333	5.484	120.7	121.1	2.9	0.7	0.2	0.2	0.3
Computer and electronic product manufacturing.....	334	15.220	83.0	82.5	-1.9	0.2	-0.2	0.1	-0.6
Electrical equipment, appliance, and component manufacturing.....	335	3.761	118.7	118.9	3.3	0.3	0.3	0.4	0.2
Transportation equipment manufacturing....	336	11.919	111.0	111.3	2.5	0.4	0.1	0.5	0.3
Furniture and related product manufacturing.....	337	1.276	113.2	113.2	3.1	0.1	-0.2	0.4	0.0
Miscellaneous manufacturing.....	339	5.044	122.2	122.3	2.1	-1.0	0.2	-0.1	0.1

¹ Relative importance figures are based on 2010 trade values.

NOTES: Data may be revised in each of the three months after original publication.

Dash = Not available

Table 4. U.S. export price indexes and percent changes for selected categories of goods: April 2011 to April 2012

[December 2005=100, unless otherwise noted]

Description	NAICS	Relative importance Mar. 2012 ¹	Index		Percent change				
			Mar. 2012	Apr. 2012	Annual Apr. 2011 to Apr. 2012	Monthly			
						Dec. 2011 to Jan. 2012	Jan. 2012 to Feb. 2012	Feb. 2012 to Mar. 2012	Mar. 2012 to Apr. 2012
Nonmanufactured articles.....		8.240	165.5	168.1	-9.1	0.2	-1.3	0.8	1.6
Agriculture, forestry, fishing and hunting...	11	6.187	195.1	201.5	-6.3	2.1	-0.4	2.8	3.3
Crop production.....	111	5.771	202.5	208.7	-7.1	2.5	-0.7	3.0	3.1
Mining.....	21	2.053	104.5	100.9	-16.7	-4.6	-3.8	-4.7	-3.4
Mining (except oil and gas).....	212	1.487	132.0	126.6	-8.9	-2.3	0.7	-5.1	-4.1
Manufactured articles.....		88.650	121.8	122.2	2.1	0.3	0.5	0.7	0.3
Manufactured goods, part 1.....	31	7.039	145.5	146.5	2.4	-0.6	0.6	1.3	0.7
Food manufacturing.....	311	4.895	166.1	167.7	5.3	-0.1	0.6	1.5	1.0
Beverage and tobacco product manufacturing.....	312	0.560	118.8	119.1	2.7	-0.7	1.4	2.6	0.3
Apparel manufacturing.....	315	0.415	119.8	119.8	8.4	1.0	0.0	0.0	0.0
Manufactured goods, part 2.....	32	26.801	136.7	138.3	2.1	0.7	1.0	1.5	1.2
Wood product manufacturing.....	321	0.400	114.1	115.3	-2.9	0.0	0.4	-0.4	1.1
Paper manufacturing.....	322	1.809	118.3	119.9	-5.7	-0.8	-0.1	-0.3	1.4
Petroleum and coal products manufacturing.....	324	6.569	178.3	183.7	2.6	2.4	2.0	4.3	3.0
Chemical manufacturing.....	325	15.113	133.3	134.1	2.4	0.2	0.9	0.8	0.6
Plastics and rubber products manufacturing.....	326	2.162	117.1	117.6	6.9	0.6	0.2	0.2	0.4
Nonmetallic mineral product manufacturing.....	327	0.749	111.7	111.4	0.7	0.4	0.0	0.5	-0.3
Manufactured goods, part 3.....	33	54.810	113.7	113.6	2.1	0.3	0.3	0.4	-0.1
Primary metal manufacturing.....	331	4.981	179.6	176.4	0.7	-3.8	1.4	2.4	-1.8
Fabricated metal product manufacturing.	332	2.591	129.0	129.3	1.4	0.4	-0.9	0.5	0.2
Machinery manufacturing.....	333	10.986	120.2	120.4	3.6	1.7	0.0	0.3	0.2
Computer and electronic product manufacturing.....	334	14.392	90.5	90.2	0.3	1.1	-0.1	0.0	-0.3
Electrical equipment, appliance, and component manufacturing.....	335	3.176	112.0	112.4	1.3	0.0	0.5	0.4	0.4
Transportation equipment manufacturing....	336	13.284	116.5	117.0	2.8	0.4	0.5	0.3	0.4
Miscellaneous manufacturing.....	339	5.108	122.1	121.6	3.4	-0.9	-0.2	-0.1	-0.4

¹ Relative importance figures are based on 2010 trade values.

NOTES: Data may be revised in each of the three months after original publication.

Dash = Not available

Table 5. U.S. import price indexes and percent changes for selected categories of goods: April 2011 to April 2012

[2000=100, unless otherwise noted]

Description	Harmonized system	Relative importance Mar. 2012 ¹	Index		Percent change				
			Mar. 2012	Apr. 2012	Annual Apr. 2011 to Apr. 2012	Monthly			
						Dec. 2011 to Jan. 2012	Jan. 2012 to Feb. 2012	Feb. 2012 to Mar. 2012	Mar. 2012 to Apr. 2012
Live animals; animal products.....	I	1.168	170.6	168.5	-1.1	2.0	-0.9	1.4	-1.2
Meat and edible meat offal.....	02	0.272	222.3	212.0	-2.4	2.6	-1.3	2.0	-4.6
Fish and crustaceans, molluscs and other aquatic invertebrates.....	03	0.608	123.0	122.5	-2.9	2.1	-1.5	0.7	-0.4
Vegetable products.....	II	1.653	214.7	227.6	-0.3	3.1	-5.8	4.4	6.0
Edible vegetables, roots, and tubers.....	07	0.288	293.1	314.5	-24.4	19.4	-32.0	17.8	7.3
Edible fruit and nuts; peel of citrus fruit or melons.....	08	0.496	127.7	127.8	-1.5	2.9	1.9	7.2	0.1
Coffee, tea, mate and spices.....	09	0.412	273.7	276.5	-8.0	1.0	-2.3	-6.2	1.0
Animal or vegetable fats and oils (Dec. 2009=100).....	III	0.258	134.7	135.9	-11.4	1.2	-2.8	2.1	0.9
Prepared foodstuffs, beverages, and tobacco.....	IV	2.333	157.8	157.6	2.4	0.6	0.0	-0.2	-0.1
Cocoa and cocoa preparations (Dec. 2009=100).....	18	0.185	88.0	86.6	-13.3	0.6	1.8	1.3	-1.6
Preparations of cereals, flour, starch or milk; bakers' wares (Dec. 2007=100).....	19	0.221	126.0	126.1	-0.2	0.4	0.0	0.2	0.1
Preparations of vegetables, fruit, nuts, or other parts of plants.....	20	0.347	175.5	174.9	11.9	1.4	-0.2	-0.5	-0.3
Beverages, spirits, and vinegar.....	22	0.779	122.0	121.9	0.9	0.2	-0.2	-0.5	-0.1
Mineral products.....	V	24.708	372.6	364.4	-1.7	-0.2	-0.1	4.4	-2.2
Mineral fuels, oils and residuals, bituminous substances and mineral waxes.....	27	24.404	368.9	360.7	-1.7	-0.2	-0.1	4.4	-2.2
Products of the chemical or allied industries.....	VI	8.011	148.3	149.8	2.7	-0.7	-0.5	0.4	1.0
Inorganic chemicals.....	28	0.831	341.5	340.3	-9.4	-4.7	-3.3	-3.9	-0.4
Organic chemicals.....	29	2.418	140.4	141.2	3.8	0.4	0.1	1.9	0.6
Pharmaceutical products.....	30	2.919	115.5	117.6	4.7	-0.6	-0.5	0.3	1.8
Fertilizers (Dec. 2009=100).....	31	0.443	142.5	146.8	18.3	-3.7	1.2	1.0	3.0
Tanning extracts; dye, pigments, varnish, paints & putty (Dec. 2011=100).....	32	0.176	103.5	107.9	-	3.1	-0.5	0.9	4.3
Essential oils and resinoids (Dec. 2001=100).....	33	0.405	124.7	125.8	1.2	0.2	-0.9	0.8	0.9
Miscellaneous chemical products.....	38	0.468	103.9	103.9	-3.3	-1.2	0.0	0.5	0.0
Plastics and articles thereof; rubber and articles thereof.....	VII	3.040	152.8	153.2	1.8	-0.1	0.3	0.3	0.3
Plastics and articles thereof.....	39	1.841	143.7	144.3	3.4	0.2	-0.1	0.4	0.4
Rubber and articles thereof.....	40	1.199	170.2	170.3	-0.8	-0.4	0.8	0.1	0.1
Raw hides, skins, leather, furskins, travel goods, etc.....	VIII	0.577	126.8	127.1	6.4	1.9	1.0	0.0	0.2
Articles of leather; travel goods, bags, etc. of various materials.....	42	0.530	127.6	127.9	6.8	2.0	1.0	0.0	0.2
Wood, wood charcoal, cork, straw, basketware and wickerwork.....	IX	0.618	135.8	137.1	2.5	0.6	0.8	3.1	1.0
Woodpulp, recovered paper, and paper products.....	X	1.167	113.9	113.4	-1.5	-1.1	0.3	0.6	-0.4
Pulp wood, waste paper, and paperboard (Dec. 2011=100).....	47	0.176	100.9	99.3	-	-4.4	0.5	5.0	-1.6
Paper and paperboard; articles of paper pulp, paper or paperboard.....	48	0.782	108.9	108.6	0.6	-0.6	0.0	-0.1	-0.3
Textile and textile articles.....	XI	5.113	115.5	115.6	4.1	0.3	0.2	-0.4	0.1
Articles of apparel and clothing accessories, knitted or crocheted.....	61	1.986	106.7	106.6	3.2	0.3	0.0	-0.1	-0.1

See footnotes at end of table.

Table 5. U.S. import price indexes and percent changes for selected categories of goods: April 2011 to April 2012 — Continued

[2000=100, unless otherwise noted]

Description	Harmonized system	Relative importance Mar. 2012 ¹	Index		Percent change				
			Mar. 2012	Apr. 2012	Annual Apr. 2011 to Apr. 2012	Monthly			
						Dec. 2011 to Jan. 2012	Jan. 2012 to Feb. 2012	Feb. 2012 to Mar. 2012	Mar. 2012 to Apr. 2012
Articles of apparel and clothing accessories, not knitted or crocheted.....	62	1.878	117.9	118.0	8.1	0.6	0.3	0.1	0.1
Made-up or worn textile articles.....	63	0.618	108.9	109.3	-1.4	-0.7	0.0	-2.8	0.4
Headgear, umbrellas, artificial flowers, etc. . .	XII	1.301	118.4	118.5	6.2	0.9	0.3	0.1	0.1
Footwear and parts of such articles.....	64	1.106	117.4	117.5	6.3	0.8	0.3	0.1	0.1
Stone, plaster, cement, asbestos, ceramics, glass etc.....	XIII	0.737	131.5	131.4	2.3	0.2	-0.1	0.3	-0.1
Articles of stone, plaster, cement, asbestos, or mica (Dec. 2001=100).....	68	0.236	124.6	124.5	3.0	-0.1	0.2	0.2	-0.1
Ceramic products.....	69	0.222	142.1	142.1	0.7	0.0	0.0	0.6	0.0
Glass and glassware.....	70	0.279	126.4	126.2	2.9	0.6	-0.3	0.2	-0.2
Pearls, stones, precious metals, imitation jewelry, and coins.....	XIV	3.362	211.3	207.2	8.0	-1.9	1.5	2.5	-1.9
Base metals and articles of base metals.....	XV	4.862	193.1	192.4	-3.9	0.3	1.1	0.8	-0.4
Iron and steel.....	72	1.116	246.2	246.4	-5.4	0.2	-0.5	0.3	0.1
Articles of iron or steel.....	73	1.392	161.9	161.9	2.7	0.1	-0.2	0.4	0.0
Copper and articles thereof.....	74	0.471	375.8	369.3	-10.5	2.6	6.2	1.4	-1.7
Nickel and articles thereof (Dec. 2009=100)...	75	0.149	118.0	110.5	-24.5	-1.6	6.0	6.1	-6.4
Aluminum and articles thereof.....	76	0.707	142.6	143.2	-7.1	-1.3	2.0	1.1	0.4
Tools, implements, cutlery, spoons and forks, of base metal; parts thereof.....	82	0.351	126.8	127.0	3.8	2.1	0.2	-0.2	0.2
Miscellaneous articles of base metal.....	83	0.393	132.7	132.7	2.4	0.5	0.5	-0.2	0.0
Machinery, electrical equipment, TV image and sound recorders, parts, etc.....	XVI	24.336	86.2	86.0	0.1	0.3	0.0	0.0	-0.2
Machinery and mechanical appliances; parts thereof.....	84	12.219	89.9	89.9	1.4	0.8	0.0	0.2	0.0
Electrical machinery and equip, sound and TV recorders & reproducers, parts.....	85	12.117	82.7	82.2	-1.2	-0.1	-0.1	0.0	-0.6
Vehicles, aircraft, vessels and associated transport equipment.....	XVII	9.960	115.3	115.7	2.6	0.3	0.1	0.5	0.3
Motor vehicles and their parts.....	87	9.181	114.3	114.8	2.6	0.2	0.1	0.4	0.4
Aircraft, spacecraft, and parts thereof (Dec. 2002=100).....	88	0.688	117.9	117.9	2.2	0.3	0.0	1.6	0.0
Optical, photo, measuring, medical & musical instruments; & timepieces.....	XVIII	3.140	104.3	104.4	-0.3	-1.9	0.2	0.2	0.1
Optical, photographic, measuring and medical instruments.....	90	2.893	101.8	101.9	-0.6	-2.1	0.3	0.1	0.1
Clocks and watches and parts thereof.....	91	0.188	128.2	128.2	1.8	0.1	0.2	0.2	0.0
Miscellaneous manufactured articles.....	XX	3.602	112.2	112.2	2.8	0.0	0.2	0.4	0.0
Furniture & stuffed furnishings; lamps & lighting fittings, nesoi; prefab bldgs.....	94	1.921	115.9	115.9	3.2	-0.3	0.3	0.4	0.0
Toys, games and sports equipment; parts and accessories thereof.....	95	1.487	104.9	105.1	2.4	0.2	0.1	0.0	0.2
Miscellaneous manufactured articles.....	96	0.194	133.2	133.3	3.7	-0.1	0.4	0.0	0.1

¹ Relative importance figures are based on 2010 trade values.

NOTES: Data may be revised in each of the three months after original publication.

Dash = Not available

Table 6. U.S. export price indexes and percent changes for selected categories of goods: April 2011 to April 2012

[2000=100, unless otherwise noted]

Description	Harmoni- zied system	Relative importance Mar. 2012 ¹	Index		Percent change				
			Mar. 2012	Apr. 2012	Annual Apr. 2011 to Apr. 2012	Monthly			
						Dec. 2011 to Jan. 2012	Jan. 2012 to Feb. 2012	Feb. 2012 to Mar. 2012	Mar. 2012 to Apr. 2012
Live animals; animal products.....	I	1.887	203.1	203.6	2.9	-0.9	-0.5	-0.9	0.2
Meat & edible meat offal (Dec. 2006=100). . .	02	1.105	169.0	167.1	4.4	-0.8	0.3	-0.2	-1.1
Fish and crustaceans, molluscs and other aquatic invertebrates.....	03	0.394	199.3	203.9	17.3	0.9	0.2	-1.9	2.3
Vegetable products.....	II	5.692	243.4	251.1	-1.0	1.7	-0.8	3.9	3.2
Edible fruit and nuts; peel of citrus fruit or melons.....	08	0.832	134.3	138.3	5.3	-4.7	-2.5	4.2	3.0
Cereals.....	10	2.181	285.0	286.7	-8.6	3.2	-0.1	2.0	0.6
Oilseeds and misc. grains, seeds, fruits, plants, straw and fodder.....	12	2.100	261.9	277.8	4.7	5.2	0.5	7.1	6.1
Animal or vegetable fats and oils (Dec. 2009=100).....	III	0.481	151.7	154.7	-2.8	1.1	-1.3	4.3	2.0
Prepared foodstuffs, beverages, and tobacco.....	IV	2.650	154.2	156.4	5.0	0.1	1.0	2.5	1.4
Preparations of vegetables, fruit, nuts or other parts of plants (Dec. 2009=100).....	20	0.319	110.3	110.6	3.5	0.4	0.4	0.3	0.3
Beverages, spirits, and vinegar (Dec. 2008=100).....	22	0.398	109.5	109.8	4.4	1.0	0.4	2.7	0.3
Residues and waste from the food industries; prepared animal feed.....	23	0.752	217.7	226.3	1.8	-1.4	2.2	5.0	4.0
Mineral products.....	V	8.975	331.3	337.5	-1.0	0.8	0.5	2.6	1.9
Mineral fuels, oils and residuals, bituminous substances and mineral waxes.....	27	8.339	327.5	334.0	-0.7	1.0	0.2	2.7	2.0
Products of the chemical or allied industries.....	VI	12.216	155.5	155.6	2.0	-0.3	0.4	0.3	0.1
Inorganic chemicals.....	28	0.993	184.4	184.6	-6.3	-6.4	0.2	-0.6	0.1
Organic chemicals.....	29	3.484	170.5	170.9	2.3	0.1	1.6	0.5	0.2
Pharmaceutical products.....	30	3.151	125.1	125.0	0.3	0.6	0.0	0.5	-0.1
Essential oils and resinoids; perfumery cosmetic or toilet preparations.....	33	0.754	135.6	135.9	6.3	0.9	0.3	0.4	0.2
Soap; lubricants; waxes, polishing or scouring products; candles, pastes.....	34	0.463	122.9	123.0	-0.4	-0.5	-0.9	-0.1	0.1
Miscellaneous chemical products.....	38	1.757	153.3	152.9	4.1	1.3	0.0	0.6	-0.3
Plastics and articles thereof; rubber and articles thereof.....	VII	5.518	151.2	153.3	3.2	0.3	1.4	0.9	1.4
Plastics and articles thereof.....	39	4.411	141.3	142.5	1.3	0.7	1.4	0.3	0.8
Rubber and articles thereof.....	40	1.107	198.4	205.9	11.7	-1.2	1.4	3.6	3.8
Raw hides, skins, leather, furskins, travel goods, etc.....	VIII	0.368	130.7	133.5	-2.4	2.2	2.2	3.6	2.1
Wood, wood charcoal, cork, straw, basketware and wickerwork.....	IX	0.527	107.3	110.0	-0.2	-1.8	1.4	-0.3	2.5
Woodpulp, recovered paper, and paper products.....	X	2.306	118.1	119.2	-7.0	0.3	0.3	0.4	0.9
Woodpulp and recovered paper.....	47	0.642	126.9	127.9	-18.1	0.7	2.3	1.3	0.8
Paper and paperboard; articles of paper pulp, paper or paperboard.....	48	1.218	116.9	118.1	-1.9	0.1	-0.4	0.0	1.0
Printed material.....	49	0.446	119.5	120.6	2.1	0.3	-0.1	0.0	0.9
Textile and textile articles.....	XI	1.973	131.2	131.0	-16.7	0.2	0.2	-1.4	-0.2
Cotton, including yarns and woven fabrics thereof.....	52	0.634	159.1	157.1	-40.4	-1.5	-0.2	-4.7	-1.3
Stone, plaster, cement, asbestos, ceramics, glass etc. (Dec. 2008=100).....	XIII	0.738	117.7	117.7	1.6	0.3	0.3	0.4	0.0
Glass and glassware.....	70	0.399	98.8	98.4	-0.9	-0.1	-0.1	0.2	-0.4

See footnotes at end of table.

Table 6. U.S. export price indexes and percent changes for selected categories of goods: April 2011 to April 2012 — Continued

[2000=100, unless otherwise noted]

Description	Harmonized system	Relative importance Mar. 2012 ¹	Index		Percent change				
			Mar. 2012	Apr. 2012	Annual Apr. 2011 to Apr. 2012	Monthly			
						Dec. 2011 to Jan. 2012	Jan. 2012 to Feb. 2012	Feb. 2012 to Mar. 2012	Mar. 2012 to Apr. 2012
Pearls, stones, precious metals, imitation jewelry, and coins.....	XIV	5.462	292.2	284.5	10.3	-4.2	1.8	1.7	-2.6
Base metals and articles of base metals.....	XV	5.652	179.4	178.8	-4.8	1.1	1.8	0.3	-0.3
Iron and steel.....	72	1.775	225.6	223.9	-8.7	3.5	3.4	-0.8	-0.8
Articles of iron or steel.....	73	1.352	172.6	172.6	1.0	0.2	-0.8	0.8	0.0
Copper and articles thereof.....	74	0.692	266.8	265.7	-6.9	-0.4	5.4	2.0	-0.4
Aluminum and articles thereof.....	76	0.840	128.9	128.8	-6.7	0.5	1.7	0.2	-0.1
Tools, implements, cutlery, spoons and forks, of base metal; parts thereof.....	82	0.375	129.2	129.2	3.0	0.3	0.2	0.0	0.0
Miscellaneous articles of base metal.....	83	0.319	138.0	138.0	2.3	-0.1	0.4	1.0	0.0
Machinery, electrical equipment, TV image and sound recorders, parts, etc.....	XVI	27.494	97.3	97.2	1.4	0.8	0.0	0.2	-0.1
Machinery and mechanical appliances; parts thereof.....	84	15.948	110.5	110.6	2.4	1.3	0.3	0.2	0.1
Electrical machinery and equipment and parts and accessories thereof.....	85	11.546	82.9	82.7	0.0	0.1	-0.2	0.0	-0.2
Vehicles, aircraft, vessels and associated transport equipment.....	XVII	10.859	126.3	126.8	2.9	0.9	0.2	0.2	0.4
Motor vehicles and their parts.....	87	7.188	112.8	113.2	3.4	1.0	0.3	0.2	0.4
Optical, photo, measuring, medical & musical instruments; & timepieces.....	XVIII	5.734	105.5	105.7	0.0	-0.8	0.6	0.2	0.2
Miscellaneous manufactured articles.....	XX	1.322	109.0	110.9	1.7	0.2	0.4	0.0	1.7
Furniture; stuffed furnishings; lamps and lighting fittings nesoi;.....	94	0.689	119.5	119.9	1.3	-0.3	0.5	0.1	0.3
Toys, games and sports equipment; parts and accessories thereof.....	95	0.516	91.2	91.2	-1.3	0.9	0.3	0.1	0.0

1 Relative importance figures are based on 2010 trade values.

NOTES: Data may be revised in each of the three months after original publication.

Dash = Not available

Table 7. U.S. import price indexes and percent changes by locality of origin: April 2011 to April 2012
 [2000=100, unless otherwise noted]

Description	Percent of U.S. imports ¹	Index		Percent change				
		Mar. 2012	Apr. 2012	Annual	Monthly			
				Apr. 2011 to Apr. 2012	Dec. 2011 to Jan. 2012	Jan. 2012 to Feb. 2012	Feb. 2012 to Mar. 2012	Mar. 2012 to Apr. 2012
Industrialized Countries²	38.296	133.0	132.3	-1.1	-0.5	-0.2	0.6	-0.5
Nonmanufactured articles.....	4.447	231.0	222.1	-14.7	-1.5	-1.8	-3.1	-3.9
Manufactured articles.....	33.487	124.9	124.8	1.2	-0.3	-0.1	1.2	-0.1
Other Countries³	61.704	145.2	144.4	1.0	0.1	0.6	1.5	-0.6
Nonmanufactured articles.....	12.907	387.1	376.2	-1.1	-0.3	2.0	4.5	-2.8
Manufactured articles.....	48.593	112.7	113.0	2.0	0.3	0.2	0.4	0.3
Canada	14.414	154.2	152.7	-5.6	-0.6	0.1	-0.3	-1.0
Nonmanufactured articles.....	4.027	219.3	210.5	-16.3	-1.7	-2.4	-3.3	-4.0
Manufactured articles.....	10.122	140.6	141.1	-0.4	-0.1	1.2	1.0	0.4
European Union⁴	15.813	136.2	136.1	1.6	-0.9	-0.1	0.9	-0.1
Nonmanufactured articles.....	0.262	393.0	382.6	9.1	2.1	5.6	0.2	-2.6
Manufactured articles.....	15.467	132.4	132.4	1.5	-0.9	-0.2	0.9	0.0
France (Dec. 2003=100)	1.736	121.5	121.8	2.5	0.0	-0.2	0.4	0.2
Germany (Dec. 2003=100)	4.265	115.1	115.0	-0.3	-0.9	0.1	0.8	-0.1
United Kingdom (Dec. 2003=100)	2.397	136.0	135.3	1.0	0.9	0.9	0.9	-0.5
Latin America⁵	19.049	186.0	184.2	-0.9	0.7	0.4	1.4	-1.0
Nonmanufactured articles.....	5.633	416.0	405.8	-1.8	0.5	0.1	3.5	-2.5
Manufactured articles.....	13.328	136.3	136.3	-0.3	0.7	0.4	0.3	0.0
Mexico (Dec. 2003=100)	12.091	149.8	149.1	-3.1	1.0	-0.2	0.5	-0.5
Nonmanufactured articles (Dec. 2008=100).....	2.017	220.3	215.7	-5.3	3.5	-1.8	2.8	-2.1
Manufactured articles (Dec. 2008=100)....	10.028	96.4	96.3	-2.2	0.3	0.2	0.0	-0.1
Pacific Rim (Dec. 2003=100)⁶	34.659	104.9	104.7	0.7	0.2	0.0	0.0	-0.2
China (Dec. 2003=100)	19.583	105.5	105.2	2.0	0.3	0.1	0.0	-0.3
Japan	6.349	102.4	102.0	0.6	0.2	0.2	-0.1	-0.4
Asian NICs⁷	5.471	90.6	90.8	-1.6	0.0	0.0	0.0	0.2
ASEAN (Dec. 2003=100)⁸	5.652	106.0	106.3	2.0	0.2	0.6	0.3	0.3
Asia Near East (Dec. 2003=100)⁹	3.948	288.5	284.1	3.2	0.1	2.1	3.4	-1.5

1 Percentage of trade figures are based on 2010 trade values.

2 Includes Western Europe, Canada, Japan, Australia, New Zealand and South Africa.

3 Includes Eastern Europe, Latin America, OPEC countries, and other countries in Asia, Africa and the Western Hemisphere.

4 Includes European Union countries.

5 Includes Mexico, Central America, South America and the Caribbean.

6 Includes China, Japan, Australia, Brunei, Indonesia, Macao, Malaysia, New Zealand, Papua New Guinea, Philippines and Asian Newly Industrialized Countries.

7 Asian Newly Industrialized Countries. Includes Hong Kong, Singapore, South Korea and Taiwan.

8 Association of Southeast Asian Nations. Includes Brunei, Cambodia, Indonesia, Laos, Malaysia, Myanmar, Philippines, Singapore, Thailand and Vietnam.

9 Includes Bahrain, Iran, Iraq, Israel, Jordan, Kuwait, Lebanon, Oman, Qatar, Saudi Arabia, Syria, United Arab Emirates and Yemen.

NOTES: Data may be revised in each of the three months after original publication.

Regions are not mutually exclusive.

Dash = Not available

Table 8. U.S. international price indexes and percent changes for selected transportation services: April 2011 to April 2012

[2000=100, unless otherwise noted]

Description	Relative importance Mar. 2012 ¹	Index		Percent change				
		Mar. 2012	Apr. 2012	Annual Apr. 2011 to Apr. 2012	Monthly			
					Dec. 2011 to Jan. 2012	Jan. 2012 to Feb. 2012	Feb. 2012 to Mar. 2012	Mar. 2012 to Apr. 2012
Air Freight								
Import Air Freight	100.000	173.4	177.4	1.5	-3.3	-1.2	2.5	2.3
Europe (Dec. 2003=100).....	24.958	166.6	166.7	4.5	-2.3	-1.6	3.0	0.1
Asia.....	70.463	152.1	157.1	0.3	-3.8	-1.2	2.4	3.3
Export Air Freight	100.000	149.0	150.2	5.1	1.6	0.3	1.4	0.8
Europe (Dec. 2006=100).....	36.077	134.2	135.7	5.1	1.5	0.5	1.5	1.1
Inbound Air Freight	100.000	158.4	161.4	1.4	-2.1	-1.1	1.9	1.9
Europe (Dec. 2003=100).....	25.410	149.6	151.1	3.3	-1.6	-1.0	2.7	1.0
Asia.....	63.018	141.2	144.7	1.5	-2.6	-1.6	1.9	2.5
Outbound Air Freight	100.000	146.5	150.2	7.6	-0.3	0.4	1.2	2.5
Europe (Dec. 2003=100).....	31.014	165.3	166.8	5.4	-0.4	0.7	1.2	0.9
Asia.....	49.039	137.4	143.5	9.7	-0.1	0.2	1.6	4.4
Air Passenger Fares								
Import Air Passenger Fares	100.000	178.7	180.0	10.3	0.2	0.3	-1.0	0.7
Europe.....	38.049	180.7	187.5	9.8	4.8	0.2	-2.4	3.8
Asia.....	25.938	147.5	148.7	9.3	-4.1	1.3	-6.6	0.8
Latin America/Caribbean.....	12.457	178.2	181.9	5.9	-4.4	-0.6	0.3	2.1
Export Air Passenger Fares	100.000	185.1	187.3	6.7	2.3	-4.5	-0.8	1.2
Europe.....	26.381	209.0	228.9	15.0	0.8	5.1	-4.7	9.5
Asia.....	28.156	166.9	167.9	7.6	6.2	-14.7	3.0	0.6
Latin America/Caribbean.....	26.352	236.3	224.7	17.8	3.7	12.3	-0.9	-4.9

¹ Relative importance figures are based on 2010 trade values.

NOTES: Data may be revised in each of the three months after original publication.

Dash = Not available

TECHNICAL NOTE

Import and Export Merchandise and Services Price Indexes -- All indexes use a modified Laspeyres formula and are not seasonally adjusted. Price indexes are reweighted annually, with a two-year lag in the weights. Published series use a base year of 2000=100 where possible. More detailed index series and additional information may be obtained at <http://www.bls.gov/mxp>, or by calling (202) 691-7101.

Merchandise Goods Classification Systems -- The merchandise price indexes are published using three classification systems. Items are classified by end use according to the Bureau of Economic Analysis Classification System, by industry according to the North American Industry Classification System (NAICS), and by product category according to the Harmonized System (HS). While classification by end use and product category are self-explanatory, some notes are in order for classifying items by industry. In the NAICS imports and exports tables, items are classified by output industry, not input industry. As an example, NAICS import index 326 (plastics and rubber products manufacturing) include outputs such as manufactured plastic rather than inputs such as petroleum. The NAICS classification structure also matches the classification system used by the PPI (Producer Price Index) to produce the NAICS primary products indexes.

Import Price Indexes -- Products have been classified by the Harmonized Tariff Schedule of the United States Annotated (TSUSA). Import prices are based on U.S. dollar prices paid by the U.S. importer. The prices are generally either "free on board" (f.o.b.) foreign port or "cost, insurance, and freight" (c.i.f.) U.S. port transaction prices, depending on the practices of the individual industry. The index for crude petroleum is calculated from data collected by the U.S. Department of Energy.

Export Price Indexes -- Products have been classified by the Harmonized Schedule B classification system of the U.S. Bureau of the Census. The prices used are generally either "free alongside ship" (f.a.s.) factory or "free on board" (f.o.b.) transaction prices, depending on the practices of the individual industry. Prices used in the grain index, excluding rice, are obtained from the U.S. Department of Agriculture.

Services Price Indexes -- Starting in September 2008 the Import Air Passenger Fares Indexes represent changes in the average revenue per passenger received by foreign carriers from U.S. residents and are calculated from data obtained from an airline consulting service. These data include tickets sold by travel agencies and travel websites. Tickets sold directly by the airlines are excluded, as are frequent flyer tickets generally. Starting in January 2008 the Export Air Passenger Fares Indexes represent changes in the average revenue per passenger received by U.S. carriers from foreign residents and are calculated from data collected directly from airlines. These data include frequent flyer tickets and those sold by consolidators. Taxes and fees are included in the Import Air Passenger Fares Index and excluded from the Export Air Passenger Fares Index. The Air Freight Indexes are calculated from data collected directly from airlines. These data exclude mail and passenger baggage. The scope of the service being priced is the movement of freight from airport to airport only, and does not include any ground transportation or port service. The Air Freight Indexes are presented using two definitions: Balance of Payments (which represent transactions between U.S. and foreign residents) and International (which represent transactions inbound to and outbound from the U.S.). Fact sheets specifying detailed information for each services industry are available at <http://www.bls.gov/mxp> under "MXP Publications."

Import Indexes by Locality of Origin -- Prices used in these indexes are a subset of the data collected for the Import Price Indexes. Beginning with January 2002, the indexes are defined by locality of origin using a nomenclature based upon the North American Industry Classification System (NAICS). Nonmanufactured goods are defined as NAICS 11 and 21 and manufactured goods are defined as NAICS 31-33.

Revision Policy -- To reflect the availability of late reports and corrections by respondents, monthly data may be revised in each of the three months after original publication. After three months, no further data revisions take place. So, for example, data released in the January release will be subject to revision in the releases for February, March, and April.

Uses of the Data -- The primary use of the indexes is to deflate trade statistics, notably the foreign trade sector of the National Income and Product Accounts constructed by the Department of Commerce. Other published indexes are useful for general market analysis. For trade in international services, Balance of Payments indexes are used for deflating National Income and Product Accounts, while International indexes are more appropriate for market analysis. Merchandise and services indexes also can be used to study U.S. competitiveness and to compute price elasticities, and the merchandise import indexes by country or region of origin are useful in terms of trade analysis.

E-Mail Subscription -- The U.S. Import and Export Price Indexes news release is available through an e-mail subscription service at (<http://www.bls.gov/bls/list.htm>).

Additional Information -- More detailed data are available on the Import/Export Price Indexes home page at (<http://www.bls.gov/mxp>). Flat Files and the FTP server are available for users requiring access to either a large volume of time series data or other related documentation. The FTP site can be accessed at <ftp://ftp.bls.gov>. For technical assistance in using the BLS Internet site, send e-mail to (labstat.helpdesk@bls.gov). For Import/Export Price Index data requests, send e-mail to (mxpinfo@bls.gov).

Information from this release will be made available to sensory impaired individuals upon request. Voice phone: 202-691-5200; Federal Relay Service: 1-800-877-8339.