

Transmission of material in this release is embargoed until
8:30 a.m. (EDT) Tuesday, June 12, 2012

USDL-12-1180

Technical information: (202) 691-7101 • MXPinfo@bls.gov • www.bls.gov/mxp
Media contact: (202) 691-5902 • PressOffice@bls.gov

U.S. IMPORT AND EXPORT PRICE INDEXES – MAY 2012

U.S. import prices decreased 1.0 percent in May, the U.S. Bureau of Labor Statistics reported today, after no change the previous month. Lower fuel and nonfuel prices each contributed to the May decrease in overall import prices. U.S. export prices also declined in May, falling 0.4 percent after a 0.4 percent increase in April.

Chart 1. One-month percent change in the Import Price Index: May 2011– May 2012

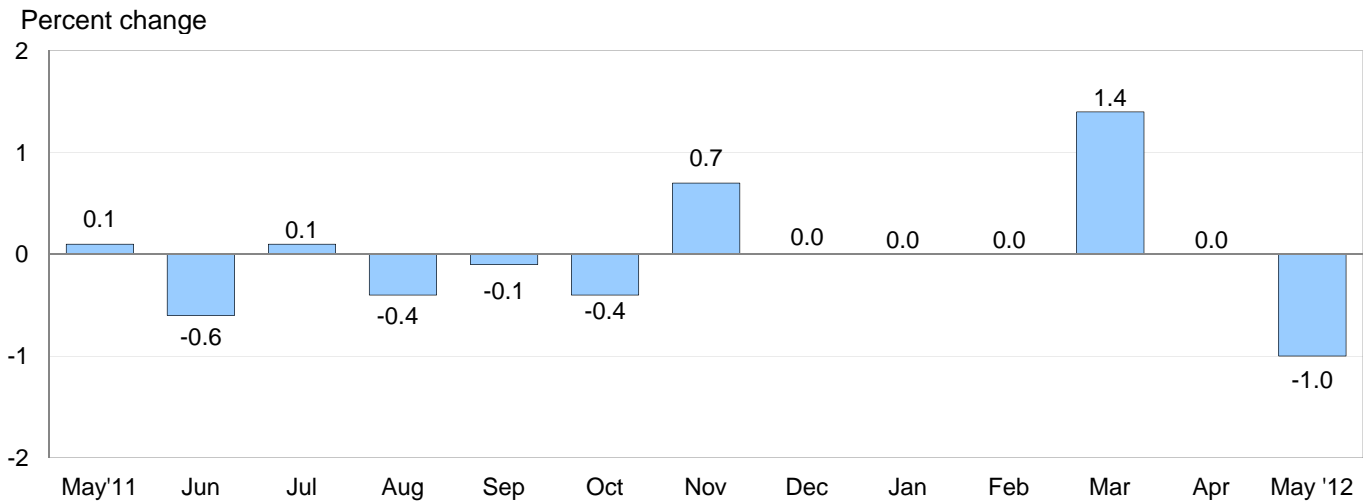
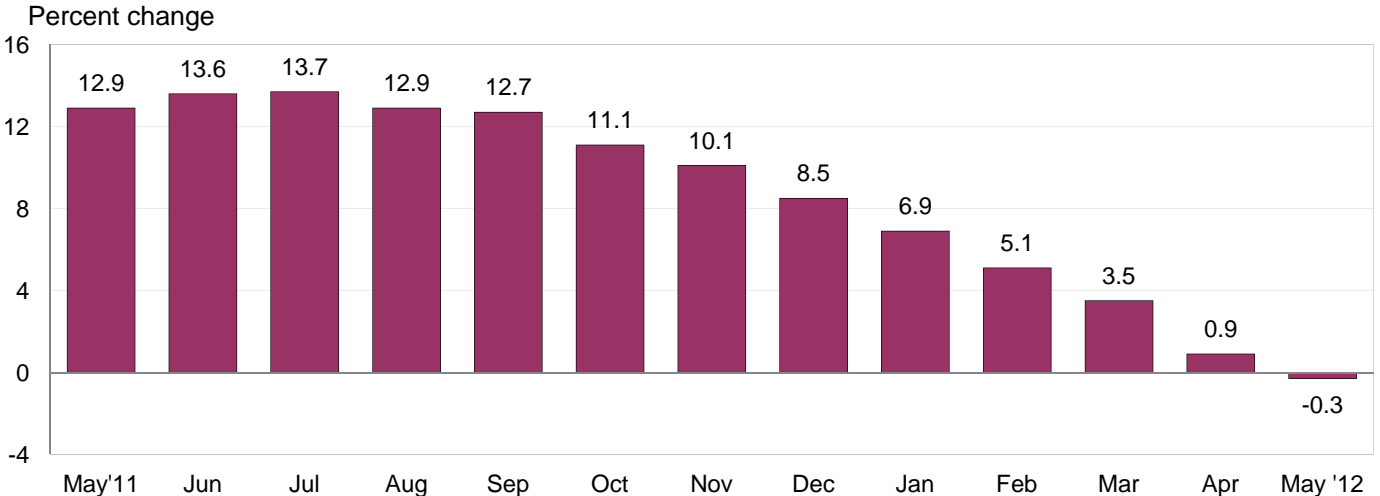


Chart 2. 12-month percent change in the Import Price Index: May 2011– May 2012



All Imports: The price index for overall imports fell 1.0 percent in May, the largest one-month drop since the index declined 1.2 percent in June 2010. Prices for U.S. imports also decreased over the past 12 months, falling 0.3 percent, the first year-over-year decline for the index since import prices fell 5.6 percent between October 2008 and October 2009. The decrease over the May 2011-12 period was led by lower fuel prices which more than offset an increase in nonfuel prices.

Fuel Imports: Fuel prices fell 4.2 percent in May, the largest monthly drop for the index since a 5.1 percent decrease in May 2010. The price index for import fuels declined 3.9 percent over the past year after rising 43.7 percent for the year ended May 2011. The decline over the past year was the largest 12-month drop in fuel prices since the index fell 14.2 percent for the October 2008-09 period. Decreasing petroleum and natural gas prices each factored into the declines in overall fuel prices in May and over the past 12 months. Petroleum prices fell 4.2 percent for the month and 2.0 percent for the year ended in May, while prices for natural gas decreased 4.8 percent and 49.6 percent, respectively, over the same periods.

All Imports Excluding Fuel: Prices for nonfuel imports edged down 0.1 percent in May, the first monthly decline since the index fell 0.2 percent in November 2011. The May decrease followed increases of 0.2 percent in April and 0.5 percent in March. Lower prices for foods, feeds, and beverages; consumer goods; and automotive vehicles more than offset a 0.1 percent advance in nonfuel industrial supplies and materials prices. Despite the May decline, the price index for nonfuel imports rose 1.0 percent over the past year.

Table A. Percent changes

Month	IMPORTS			EXPORTS		
	All imports	Fuel imports	Nonfuel imports	All exports	Agricultural exports	Non-agricultural exports
2011						
May.....	0.1	-0.6	0.3	0.4	-1.1	0.5
June.....	-0.6	-2.3	0.0	0.1	0.8	0.2
July.....	0.1	0.1	0.2	-0.4	-4.0	0.1
August.....	-0.4	-2.1	0.2	0.4	1.6	0.3
September.....	-0.1	-1.0	0.2	0.5	1.9	0.3
October.....	-0.4	-0.6	-0.2	-2.0	-6.5	-1.4
November.....	0.7	3.4	-0.2	0.1	1.7	-0.2
December.....	0.0	-0.4	0.1	-0.5	-2.3	-0.2
2012						
January.....	0.0	-0.2	0.2	0.3	1.1	0.2
February.....	0.0	-0.1	0.0	0.5	-0.4	0.6
March.....	1.4 ^r	4.4	0.5	0.8	2.4 ^r	0.5
April.....	0.0 ^r	-0.7 ^r	0.2 ^r	0.4	2.0	0.2
May.....	-1.0	-4.2	-0.1	-0.4	0.7	-0.5
May 2010 to 2011.....	12.9	43.7	4.5	9.1	30.4	7.0
May 2011 to 2012.....	-0.3	-3.9	1.0	-0.1	-1.3	0.1

r Revised

Chart 3. One-month percent change in the Export Price Index: May 2011– May 2012

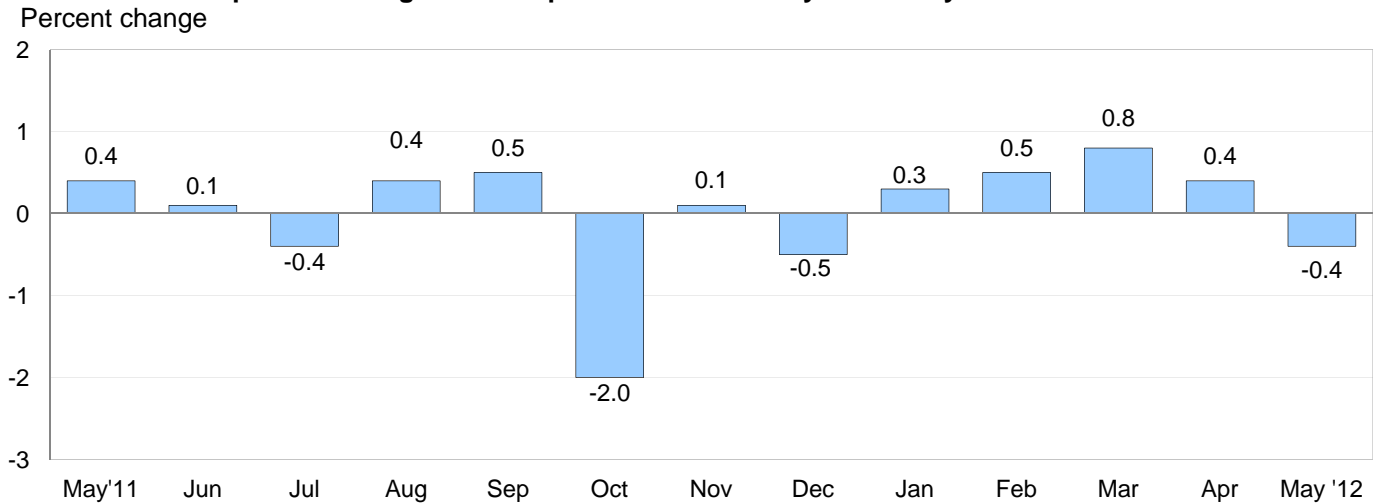
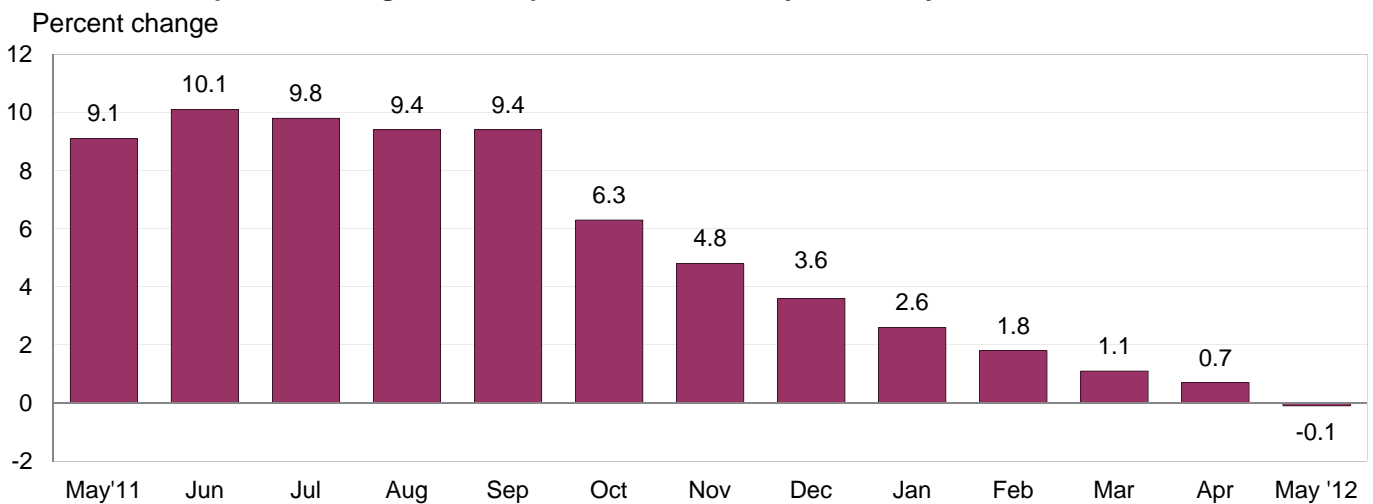


Chart 4. 12-month percent change in the Export Price Index: May 2011– May 2012



All Exports: Export prices fell 0.4 percent in May after increasing 2.0 percent over the first four months of 2012. The May decline was driven by lower prices for nonagricultural exports, which more than offset increasing agricultural prices. Overall export prices edged down 0.1 percent between May 2011 and May 2012, the first 12-month drop in the index since a 3.6 percent decrease for the year ended October 2009. The 12-month decline was led by lower agricultural prices.

Agricultural Exports: Led by a 5.1 percent rise in soybean prices, the index for agricultural exports rose 0.7 percent in May following a 2.0 percent increase the previous month. Despite the recent advances, agricultural prices fell 1.3 percent over the past 12 months. Lower prices for cotton, wheat, and corn over the past year all contributed to the decline.

All Exports Excluding Agriculture: The price index for nonagricultural exports fell 0.5 percent in May, the first monthly decline since a 0.2 percent decrease in December 2011 and the largest since a 1.4 percent drop in October 2011. In May, falling nonagricultural industrial supplies and materials prices more than offset higher finished goods prices. Overall nonagricultural prices ticked up 0.1 percent over the past year.

SELECTED MAY HIGHLIGHTS

Import Prices

Nonfuel Industrial Supplies and Materials: Nonfuel industrial supplies and materials prices edged up 0.1 percent in May after rising 0.5 percent in April. An 8.0 percent rise in fertilizer prices was the largest contributor to the May advance.

Finished Goods: Prices for import finished goods recorded little movement in May, with the price indexes for consumer goods and automotive vehicles each edging down 0.1 percent and capital goods prices remaining unchanged.

Foods, Feeds, and Beverages: Foods, feeds, and beverages prices decreased 0.7 percent in May after ticking up 0.1 percent the previous month. The May decline was led by a 4.1 percent drop in fruit prices and a 2.5 percent decrease in the price index for fish and shellfish. In contrast, vegetable prices advanced 3.2 percent in May.

Imports by Locality of Origin: The price indexes for imports from Canada, Mexico, and the European Union decreased in May, falling 1.3 percent, 0.7 percent, and 0.1 percent, respectively. Each index was driven by lower fuel prices. In contrast, import prices from Japan rose 0.2 percent in May and increased by 1.1 percent over the past year. Prices for imports from China were unchanged in May after declining 0.3 percent in April and recording no change in March. Despite falling over the past three months, import prices from China increased 1.7 percent for the year ended in May.

Transportation Services: The index for import air passenger fares advanced 0.6 percent in May, led by a 6.1 percent increase in Asian fares. Import air passenger fares rose 5.1 percent over the past year, driven by a 10.2 percent jump in Asian fares. European fares ticked up 0.2 percent over the May 2011-12 period, while Latin American/Caribbean fares advanced 0.8 percent. Import air freight prices rose 0.3 percent in May, but fell 4.1 percent over the past 12 months.

Export Prices

Nonagricultural Industrial Supplies and Materials: Prices for nonagricultural industrial supplies and materials fell 1.7 percent in May following a 0.5 percent increase the previous month. The May decline was led by a 4.6 percent drop in fuel prices, although a 0.8 percent decrease in chemical prices and a 1.5 percent decline in prices for nonferrous metals also contributed to the overall decrease.

Finished Goods: Finished goods prices were mixed in May. Prices for consumer goods rose 0.7 percent and automotive vehicles prices ticked up 0.1 percent. The price index for capital goods was unchanged as a 0.3 percent drop in computers, peripherals, and semiconductor prices offset a 0.2 percent increase in prices for capital goods excluding computers.

Transportation Services: Export air passenger fares increased 3.2 percent in May, driven by a 6.6 percent increase in Asian fares. Export air passenger fares rose 4.9 percent over the past year. Export air freight prices advanced 0.2 percent in May and 1.7 percent over the past 12 months.

Import and Export Price Index data for June 2012 are scheduled for release on Thursday, July 12, 2012 at 8:30 a.m. (EDT).

Table 1. U.S. import price indexes and percent changes for selected categories of goods: May 2011 to May 2012

[2000=100, unless otherwise noted]

Description	End Use	Relative importance Apr. 2012 ¹	Index		Percent change				
			Apr. 2012	May 2012	Annual May 2011 to May 2012	Monthly			
						Jan. 2012 to Feb. 2012	Feb. 2012 to Mar. 2012	Mar. 2012 to Apr. 2012	Apr. 2012 to May 2012
All commodities.....		100.000	144.2	142.7	-0.3	0.0	1.4	0.0	-1.0
All imports excluding food and fuels (Dec. 2010=100).....		70.069	104.1	104.1	1.3	0.2	0.4	0.2	0.0
All imports excluding petroleum.....		75.974	116.8	116.7	0.3	-0.1	0.3	0.1	-0.1
All imports excluding fuels (Dec. 2001=100)..		75.129	121.4	121.3	1.0	0.0	0.5	0.2	-0.1
Foods, feeds, & beverages.....	0	5.060	174.5	173.3	-2.6	-2.8	1.7	0.1	-0.7
Agricultural foods, feeds & beverages, excluding distilled beverages.....	00	3.922	196.5	195.7	-3.0	-3.4	2.2	0.1	-0.4
Nonagricultural foods (fish, distilled beverages).....	01	1.138	124.7	122.4	-1.2	-0.9	0.2	0.2	-1.8
Industrial supplies & materials.....	1	38.098	271.3	264.0	-2.5	0.3	3.4	-0.3	-2.7
Industrial supplies & materials excluding petroleum.....		14.072	167.3	167.1	-3.6	0.2	0.9	-0.2	-0.1
Industrial supplies & materials excluding fuels (Dec. 2001=100).....		13.227	193.8	194.0	0.2	1.0	1.5	0.5	0.1
Industrial supplies & materials, durable.....		7.781	181.3	180.2	-3.6	1.2	1.8	-1.1	-0.6
Industrial supplies & materials nondurable excluding petroleum.....		5.446	151.0	151.8	-3.6	-0.9	-0.1	0.9	0.5
Fuels & lubricants.....	10	24.872	368.5	353.2	-3.9	-0.1	4.4	-0.7	-4.2
Petroleum & petroleum products.....	100	24.027	416.9	399.5	-2.0	0.3	4.9	-0.4	-4.2
Crude.....	10000	18.096	427.2	412.2	-1.6	2.3	4.0	-1.3	-3.5
Fuels, n.e.s.-coals & gas.....	101	0.558	77.5	74.6	-44.3	-10.0	-9.7	-12.1	-3.7
Gas-natural.....	10110	0.453	63.0	60.0	-49.6	-10.9	-12.9	-14.4	-4.8
Paper & paper base stocks.....	11	0.575	113.1	114.4	-4.3	-0.1	1.4	-0.8	1.1
Materials associated with nondurable supplies & materials.....	12	4.959	182.9	184.8	7.9	0.6	1.1	2.9	1.0
Selected building materials.....	13	0.984	135.1	137.1	4.4	0.5	1.8	0.5	1.5
Unfinished metals related to durable goods.....	14	3.712	277.7	273.5	-10.2	1.7	3.0	-2.2	-1.5
Finished metals related to durable goods. ...	15	1.521	164.0	163.5	2.0	1.5	-0.2	0.1	-0.3
Nonmetals related to durable goods.....	16	1.476	115.8	115.9	2.3	0.1	0.5	0.3	0.1
Capital goods.....	2	21.826	93.5	93.5	0.9	0.0	0.1	-0.1	0.0
Electric generating equipment.....	20	2.837	119.7	119.6	2.2	-0.2	0.4	0.4	-0.1
Nonelectrical machinery.....	21	17.375	86.5	86.5	0.1	-0.1	0.1	-0.2	0.0
Transportation equipment excluding motor vehicles (Dec. 2001=100).....	22	1.614	133.6	133.8	6.2	0.2	0.9	0.4	0.1
Automotive vehicles, parts & engines.....	3	11.337	114.5	114.4	1.4	0.1	0.3	0.7	-0.1
Consumer goods, excluding automotives..	4	23.679	107.8	107.7	2.1	0.1	0.1	0.1	-0.1
Nondurables, manufactured.....	40	11.383	115.1	115.0	3.7	-0.1	0.1	0.5	-0.1
Durables, manufactured.....	41	11.021	99.9	99.8	-0.1	0.1	0.2	-0.4	-0.1
Nonmanufactured consumer goods.....	42	1.274	119.2	119.7	9.4	1.0	-1.5	1.0	0.4

¹ Relative importance figures are based on 2010 trade values.

NOTES: Data may be revised in each of the three months after original publication.

Dash = Not available

Table 2. U.S. export price indexes and percent changes for selected categories of goods: May 2011 to May 2012

[2000=100, unless otherwise noted]

Description	End Use	Relative importance Apr. 2012 ¹	Index		Percent change				
			Apr. 2012	May 2012	Annual	Monthly			
					May 2011 to May 2012	Jan. 2012 to Feb. 2012	Feb. 2012 to Mar. 2012	Mar. 2012 to Apr. 2012	Apr. 2012 to May 2012
All commodities.....		100.000	134.7	134.1	-0.1	0.5	0.8	0.4	-0.4
Agricultural commodities.....		10.986	211.1	212.6	-1.3	-0.4	2.4	2.0	0.7
All exports excluding food and fuels (Dec. 2010=100).....		80.839	103.5	103.4	0.2	0.6	0.4	0.0	-0.1
Nonagricultural commodities.....		89.014	129.2	128.5	0.1	0.6	0.5	0.2	-0.5
Foods, feeds, & beverages.....	0	10.068	210.7	212.4	2.4	-0.5	2.7	2.3	0.8
Agricultural foods, feeds & beverages, excluding distilled beverages.....	00	9.356	213.4	215.8	2.0	-0.6	3.0	2.3	1.1
Nonagricultural foods (fish, distilled beverages).....	01	0.712	190.1	184.6	8.5	0.5	-0.2	2.0	-2.9
Industrial supplies & materials.....	1	34.946	189.2	185.9	-3.7	1.2	1.1	0.5	-1.7
Industrial supplies & materials, durable.....		12.342	189.6	188.6	-0.7	2.2	1.2	-0.8	-0.5
Industrial supplies & materials, nondurable.....		22.605	189.8	185.2	-5.4	0.7	1.1	1.3	-2.4
Agricultural industrial supplies & materials..	10	1.630	202.2	199.0	-17.3	0.6	-0.2	0.3	-1.6
Nonagricultural industrial supplies & materials.....		33.316	188.9	185.6	-2.9	1.2	1.2	0.5	-1.7
Fuels & lubricants.....	11	9.093	285.1	271.9	-5.5	0.0	2.5	1.7	-4.6
Nonagricultural supplies & materials excluding fuels & building materials.....	12	23.291	176.5	175.3	-2.0	1.7	0.7	0.1	-0.7
Selected building materials.....	13	0.932	117.7	117.3	0.8	1.1	0.1	0.4	-0.3
Capital goods.....	2	34.259	106.0	106.0	1.5	0.3	0.2	0.1	0.0
Electrical generating equipment.....	20	3.485	113.0	113.8	0.4	0.4	0.3	0.0	0.7
Nonelectrical machinery.....	21	24.863	95.4	95.3	1.4	0.0	0.1	0.1	-0.1
Transportation equipment excluding motor vehicles (Dec. 2001=100).....	22	5.911	149.0	149.2	2.8	1.0	0.3	0.3	0.1
Automotive vehicles, parts & engines.....	3	8.153	113.1	113.2	2.7	0.2	0.2	0.5	0.1
Consumer goods, excluding automotives..	4	12.574	116.2	117.0	1.8	0.0	0.1	-0.5	0.7
Nondurables, manufactured.....	40	5.862	114.9	115.0	0.8	0.1	0.3	-0.1	0.1
Durables, manufactured.....	41	5.291	113.9	115.6	3.8	0.5	0.3	-0.3	1.5

¹ Relative importance figures are based on 2010 trade values.

NOTES: Data may be revised in each of the three months after original publication.

Dash = Not available

Table 3. U.S. import price indexes and percent changes for selected categories of goods: May 2011 to May 2012

[December 2005=100, unless otherwise noted]

Description	NAICS	Relative importance Apr. 2012 ¹	Index		Percent change				
			Apr. 2012	May 2012	Annual	Monthly			
					May 2011 to May 2012	Jan. 2012 to Feb. 2012	Feb. 2012 to Mar. 2012	Mar. 2012 to Apr. 2012	Apr. 2012 to May 2012
Nonmanufactured articles.....		21.251	179.5	173.2	-4.6	1.1	3.6	-1.3	-3.5
Agriculture, forestry, fishing and hunting...	11	1.852	177.4	176.1	-7.6	-5.3	3.5	2.2	-0.7
Crop production.....	111	1.317	184.4	184.0	-7.9	-7.9	4.2	2.8	-0.2
Mining.....	21	19.399	179.3	172.6	-4.2	1.7	3.7	-1.6	-3.7
Mining (except oil and gas) (Dec. 2006=100).....	212	0.324	145.7	145.6	-6.1	-1.8	1.3	-0.4	-0.1
Manufactured articles.....		78.288	119.1	118.6	1.0	-0.3	0.8	0.3	-0.4
Manufactured goods, part 1.....	31	10.728	126.2	125.8	4.3	0.2	0.2	0.6	-0.3
Food manufacturing.....	311	3.058	164.5	163.4	5.6	-0.1	1.1	1.9	-0.7
Beverage and tobacco product manufacturing.....	312	0.823	111.5	111.8	1.1	-0.2	-0.3	-0.1	0.3
Textile mills (Dec. 2011=100).....	313	0.394	101.7	101.8	-	0.1	0.2	0.2	0.1
Textile product mills.....	314	0.862	117.5	117.0	0.5	-0.1	-1.1	0.9	-0.4
Apparel manufacturing.....	315	4.002	112.2	111.9	4.3	0.2	0.0	0.1	-0.3
Leather and allied product manufacturing. .	316	1.590	119.3	119.4	6.0	0.7	0.0	0.0	0.1
Manufactured goods, part 2.....	32	18.025	142.9	140.9	1.4	-1.9	2.5	1.3	-1.4
Wood product manufacturing.....	321	0.591	113.1	114.6	4.1	0.7	2.9	0.9	1.3
Paper manufacturing.....	322	1.061	110.7	111.3	-1.2	0.0	1.0	-0.6	0.5
Petroleum and coal products manufacturing.....	324	4.973	186.9	175.3	-2.7	-7.0	7.2	2.7	-6.2
Chemical manufacturing.....	325	8.646	136.2	136.8	3.4	0.0	0.8	1.2	0.4
Plastics and rubber products manufacturing.....	326	1.852	127.6	128.0	4.2	-0.2	0.2	0.3	0.3
Nonmetallic mineral product manufacturing.....	327	0.814	129.6	130.3	2.2	0.2	0.2	0.1	0.5
Manufactured goods, part 3.....	33	49.536	110.4	110.2	0.0	0.2	0.4	-0.1	-0.2
Primary metal manufacturing.....	331	4.312	182.8	180.0	-7.7	1.9	2.8	-1.7	-1.5
Fabricated metal product manufacturing. . .	332	2.493	129.7	129.8	3.6	0.4	0.0	-0.1	0.1
Machinery manufacturing.....	333	5.505	121.2	121.4	2.5	0.3	0.2	0.2	0.2
Computer and electronic product manufacturing.....	334	15.135	82.5	82.4	-1.8	-0.1	-0.1	-0.5	-0.1
Electrical equipment, appliance, and component manufacturing.....	335	3.772	119.0	119.1	3.2	0.1	0.5	0.4	0.1
Transportation equipment manufacturing....	336	11.988	111.6	111.6	1.9	0.0	0.5	0.6	0.0
Furniture and related product manufacturing.....	337	1.277	113.2	113.2	2.7	-0.2	0.4	0.0	0.0
Miscellaneous manufacturing.....	339	5.055	122.5	122.4	1.9	0.2	0.0	0.2	-0.1

¹ Relative importance figures are based on 2010 trade values.

NOTES: Data may be revised in each of the three months after original publication.

Dash = Not available

Table 4. U.S. export price indexes and percent changes for selected categories of goods: May 2011 to May 2012

[December 2005=100, unless otherwise noted]

Description	NAICS	Relative importance Apr. 2012 ¹	Index		Percent change				
			Apr. 2012	May 2012	Annual	Monthly			
					May 2011 to May 2012	Jan. 2012 to Feb. 2012	Feb. 2012 to Mar. 2012	Mar. 2012 to Apr. 2012	Apr. 2012 to May 2012
Nonmanufactured articles.....		8.305	167.4	167.9	-8.9	-1.6	0.7	1.5	0.3
Agriculture, forestry, fishing and hunting...	11	6.349	201.0	202.4	-4.2	-0.4	2.8	3.0	0.7
Crop production.....	111	5.908	208.1	210.6	-4.4	-0.7	3.0	2.8	1.2
Mining.....	21	1.956	100.0	98.9	-21.4	-4.8	-5.1	-2.9	-1.1
Mining (except oil and gas).....	212	1.403	125.1	122.3	-13.7	-0.9	-5.5	-3.3	-2.2
Manufactured articles.....		88.627	122.2	121.7	1.2	0.5	0.7	0.3	-0.4
Manufactured goods, part 1.....	31	7.061	146.6	147.3	2.4	0.6	1.3	0.8	0.5
Food manufacturing.....	311	4.924	167.7	168.8	5.4	0.5	1.5	1.0	0.7
Beverage and tobacco product manufacturing.....	312	0.560	119.1	119.8	3.0	1.4	2.6	0.3	0.6
Apparel manufacturing.....	315	0.413	119.8	119.8	7.7	0.0	0.0	0.0	0.0
Manufactured goods, part 2.....	32	27.051	138.5	136.0	-0.3	1.0	1.4	1.3	-1.8
Wood product manufacturing.....	321	0.402	115.3	114.9	-1.0	0.4	-0.5	1.1	-0.3
Paper manufacturing.....	322	1.823	119.7	118.1	-7.2	0.0	-0.3	1.1	-1.3
Petroleum and coal products manufacturing.....	324	6.742	183.7	174.3	-2.2	2.0	4.2	3.1	-5.1
Chemical manufacturing.....	325	15.173	134.3	133.3	0.5	0.9	0.8	0.8	-0.7
Plastics and rubber products manufacturing.....	326	2.166	117.8	118.0	6.1	0.2	0.2	0.6	0.2
Nonmetallic mineral product manufacturing.....	327	0.744	111.4	111.4	0.9	0.1	0.4	-0.3	0.0
Manufactured goods, part 3.....	33	54.515	113.5	113.6	1.6	0.3	0.4	-0.2	0.1
Primary metal manufacturing.....	331	4.875	176.5	174.5	-2.3	1.4	2.4	-1.7	-1.1
Fabricated metal product manufacturing.	332	2.588	129.3	129.3	1.4	-0.9	0.5	0.2	0.0
Machinery manufacturing.....	333	10.966	120.4	120.5	3.5	0.1	0.3	0.2	0.1
Computer and electronic product manufacturing.....	334	14.300	90.2	90.3	0.7	-0.1	0.0	-0.3	0.1
Electrical equipment, appliance, and component manufacturing.....	335	3.177	112.4	112.6	-0.2	0.5	0.4	0.4	0.2
Transportation equipment manufacturing....	336	13.271	116.9	117.0	2.5	0.5	0.3	0.3	0.1
Furniture and related product manufacturing (Dec. 2011=100).....	337	0.294	102.6	102.6	-	1.5	0.2	0.9	0.0
Miscellaneous manufacturing.....	339	5.043	121.0	122.5	3.1	-0.2	-0.1	-0.9	1.2

1 Relative importance figures are based on 2010 trade values.

NOTES: Data may be revised in each of the three months after original publication.

Dash = Not available

Table 5. U.S. import price indexes and percent changes for selected categories of goods: May 2011 to May 2012

[2000=100, unless otherwise noted]

Description	Harmonized system	Relative importance Apr. 2012 ¹	Index		Percent change				
			Apr. 2012	May 2012	Annual	Monthly			
					May 2011 to May 2012	Jan. 2012 to Feb. 2012	Feb. 2012 to Mar. 2012	Mar. 2012 to Apr. 2012	Apr. 2012 to May 2012
Live animals; animal products.....	I	1.153	168.3	165.2	-2.8	-0.9	1.3	-1.2	-1.8
Meat and edible meat offal.....	02	0.260	212.0	211.7	-1.1	-1.3	2.0	-4.6	-0.1
Fish and crustaceans, molluscs and other aquatic invertebrates.....	03	0.604	122.2	119.2	-6.1	-1.5	0.4	-0.5	-2.5
Vegetable products.....	II	1.758	228.2	226.2	1.7	-5.7	4.5	6.1	-0.9
Edible vegetables, roots, and tubers.....	07	0.314	319.2	323.8	-12.3	-32.0	18.8	7.9	1.4
Edible fruit and nuts; peel of citrus fruit or melons.....	08	0.497	127.8	122.4	-5.3	1.9	7.2	0.1	-4.2
Coffee, tea, mate and spices.....	09	0.416	276.5	271.2	-9.8	-2.3	-6.2	1.0	-1.9
Animal or vegetable fats and oils (Dec. 2009=100).....	III	0.260	135.9	136.7	-11.5	-2.8	2.1	0.9	0.6
Prepared foodstuffs, beverages, and tobacco.....	IV	2.328	157.4	157.2	1.6	0.0	-0.2	-0.3	-0.1
Cocoa and cocoa preparations (Dec. 2009=100).....	18	0.182	86.6	85.4	-16.2	1.8	1.3	-1.6	-1.4
Preparations of cereals, flour, starch or milk; bakers' wares (Dec. 2007=100).....	19	0.221	126.1	126.2	-1.7	0.0	0.2	0.1	0.1
Preparations of vegetables, fruit, nuts, or other parts of plants.....	20	0.344	173.8	172.7	9.9	-0.2	-0.7	-0.7	-0.6
Beverages, spirits, and vinegar.....	22	0.778	121.8	122.4	1.7	-0.2	-0.5	-0.2	0.5
Mineral products.....	V	24.527	369.6	354.7	-3.7	-0.1	4.3	-0.8	-4.0
Mineral fuels, oils and residuals, bituminous substances and mineral waxes.....	27	24.223	365.9	351.0	-3.7	-0.1	4.4	-0.8	-4.1
Products of the chemical or allied industries.....	VI	8.104	149.9	151.2	3.3	-0.5	0.3	1.1	0.9
Inorganic chemicals.....	28	0.838	344.1	359.8	-5.5	-3.1	-3.5	0.2	4.6
Organic chemicals.....	29	2.429	140.9	140.9	3.1	0.1	1.8	0.5	0.0
Pharmaceutical products.....	30	2.973	117.6	117.6	5.2	-0.5	0.4	1.7	0.0
Fertilizers (Dec. 2009=100).....	31	0.462	148.7	160.2	27.1	0.4	0.2	6.0	7.7
Tanning extracts; dye, pigments, varnish, paints & putty (Dec. 2011=100).....	32	0.182	107.1	106.9	-	-0.5	0.6	3.8	-0.2
Essential oils and resinoids (Dec. 2001=100).....	33	0.409	125.8	125.2	-0.4	-0.8	0.7	0.9	-0.5
Miscellaneous chemical products.....	38	0.469	103.9	104.0	-4.1	0.0	0.5	0.0	0.1
Plastics and articles thereof; rubber and articles thereof.....	VII	3.064	153.9	153.7	1.7	0.3	0.3	0.7	-0.1
Plastics and articles thereof.....	39	1.853	144.6	144.3	2.4	0.0	0.4	0.6	-0.2
Rubber and articles thereof.....	40	1.211	171.8	171.6	0.6	0.8	0.2	0.9	-0.1
Raw hides, skins, leather, furskins, travel goods, etc.....	VIII	0.574	126.1	126.3	5.2	0.7	-0.2	-0.2	0.2
Articles of leather; travel goods, bags, etc. of various materials.....	42	0.527	126.9	127.1	5.6	0.8	-0.2	-0.1	0.2
Wood, wood charcoal, cork, straw, basketware and wickerwork.....	IX	0.624	137.0	138.7	4.6	0.8	3.0	1.0	1.2
Woodpulp, recovered paper, and paper products.....	X	1.163	113.5	114.1	-1.3	0.3	0.6	-0.4	0.5
Pulp wood, waste paper, and paperboard (Dec. 2011=100).....	47	0.173	99.3	103.5	-	0.5	5.0	-1.6	4.2
Paper and paperboard; articles of paper pulp, paper or paperboard.....	48	0.780	108.7	108.5	0.5	0.0	-0.1	-0.2	-0.2
Textile and textile articles.....	XI	5.133	115.9	115.6	3.6	0.2	-0.2	0.1	-0.3
Articles of apparel and clothing accessories, knitted or crocheted.....	61	1.989	106.7	106.1	2.1	0.0	-0.1	0.0	-0.6

See footnotes at end of table.

Table 5. U.S. import price indexes and percent changes for selected categories of goods: May 2011 to May 2012 — Continued

[2000=100, unless otherwise noted]

Description	Harmonized system	Relative importance Apr. 2012 ¹	Index		Percent change				
			Apr. 2012	May 2012	Annual	Monthly			
					May 2011 to May 2012	Jan. 2012 to Feb. 2012	Feb. 2012 to Mar. 2012	Mar. 2012 to Apr. 2012	Apr. 2012 to May 2012
Articles of apparel and clothing accessories, not knitted or crocheted.....	62	1.884	118.2	118.2	7.7	0.4	0.1	0.1	0.0
Made-up or worn textile articles.....	63	0.627	110.5	109.9	-1.2	0.0	-1.8	0.5	-0.5
Headgear, umbrellas, artificial flowers, etc. . .	XII	1.303	118.5	118.7	5.9	0.3	0.1	0.1	0.2
Footwear and parts of such articles.....	64	1.108	117.5	117.7	5.8	0.3	0.1	0.1	0.2
Stone, plaster, cement, asbestos, ceramics, glass etc.....	XIII	0.737	131.4	132.0	2.4	-0.1	0.3	-0.1	0.5
Articles of stone, plaster, cement, asbestos, or mica (Dec. 2001=100).....	68	0.236	124.5	124.4	2.4	0.2	0.2	-0.1	-0.1
Ceramic products.....	69	0.222	142.1	142.1	0.6	0.0	0.6	0.0	0.0
Glass and glassware.....	70	0.279	126.3	127.7	3.7	-0.2	0.1	0.0	1.1
Pearls, stones, precious metals, imitation jewelry, and coins.....	XIV	3.298	207.2	204.4	2.8	1.5	2.5	-1.9	-1.4
Base metals and articles of base metals.....	XV	4.858	192.8	191.9	-5.1	1.1	0.7	-0.1	-0.5
Iron and steel.....	72	1.119	246.7	247.7	-6.1	-0.6	0.2	0.4	0.4
Articles of iron or steel.....	73	1.394	162.1	161.9	1.8	-0.2	0.4	0.1	-0.1
Copper and articles thereof.....	74	0.463	369.3	364.3	-10.5	6.2	1.4	-1.7	-1.4
Nickel and articles thereof (Dec. 2009=100)...	75	0.140	110.5	104.4	-26.8	6.0	6.1	-6.4	-5.5
Aluminum and articles thereof.....	76	0.710	143.2	140.6	-11.5	2.0	1.1	0.4	-1.8
Tools, implements, cutlery, spoons and forks, of base metal; parts thereof.....	82	0.354	127.7	128.5	4.5	0.2	-0.2	0.7	0.6
Miscellaneous articles of base metal.....	83	0.400	134.8	135.1	4.2	0.5	-0.2	1.6	0.2
Machinery, electrical equipment, TV image and sound recorders, parts, etc.....	XVI	24.294	86.0	86.0	0.0	0.0	0.0	-0.2	0.0
Machinery and mechanical appliances; parts thereof.....	84	12.239	90.0	90.1	1.6	0.1	0.1	0.1	0.1
Electrical machinery and equip, sound and TV recorders & reproducers, parts.....	85	12.055	82.2	82.1	-1.4	-0.1	-0.1	-0.5	-0.1
Vehicles, aircraft, vessels and associated transport equipment.....	XVII	10.015	115.8	115.8	1.6	0.0	0.5	0.5	0.0
Motor vehicles and their parts.....	87	9.235	114.9	114.9	1.5	0.1	0.4	0.5	0.0
Aircraft, spacecraft, and parts thereof (Dec. 2002=100).....	88	0.688	117.9	118.0	2.3	0.0	1.6	0.0	0.1
Optical, photo, measuring, medical & musical instruments; & timepieces.....	XVIII	3.147	104.4	104.2	-0.6	0.2	0.2	0.1	-0.2
Optical, photographic, measuring and medical instruments.....	90	2.900	102.0	101.8	-0.7	0.3	0.2	0.1	-0.2
Clocks and watches and parts thereof.....	91	0.188	128.2	128.2	0.9	0.2	0.2	0.0	0.0
Miscellaneous manufactured articles.....	XX	3.606	112.2	112.3	2.7	0.2	0.4	0.0	0.1
Furniture & stuffed furnishings; lamps & lighting fittings, nesoi; prefab bldgs.....	94	1.922	116.0	116.0	2.8	0.3	0.5	0.0	0.0
Toys, games and sports equipment; parts and accessories thereof.....	95	1.489	105.1	105.3	2.4	0.0	0.1	0.2	0.2
Miscellaneous manufactured articles.....	96	0.195	133.3	133.3	3.5	0.4	0.0	0.1	0.0

¹ Relative importance figures are based on 2010 trade values.

NOTES: Data may be revised in each of the three months after original publication.

Dash = Not available

Table 6. U.S. export price indexes and percent changes for selected categories of goods: May 2011 to May 2012

[2000=100, unless otherwise noted]

Description	Harmoni- zied system	Relative importance Apr. 2012 ¹	Index		Percent change				
			Apr. 2012	May 2012	Annual	Monthly			
					May 2011 to May 2012	Jan. 2012 to Feb. 2012	Feb. 2012 to Mar. 2012	Mar. 2012 to Apr. 2012	Apr. 2012 to May 2012
Live animals; animal products.....	I	1.890	204.1	201.2	1.3	-0.5	-0.9	0.5	-1.4
Meat & edible meat offal (Dec. 2006=100). . .	02	1.091	167.4	167.8	3.3	0.3	-0.3	-0.8	0.2
Fish and crustaceans, molluscs and other aquatic invertebrates.....	03	0.403	204.5	199.3	7.8	0.2	-1.6	2.3	-2.5
Vegetable products.....	II	5.830	250.2	255.0	1.6	-0.8	3.8	3.0	1.9
Edible fruit and nuts; peel of citrus fruit or melons.....	08	0.848	137.3	137.9	7.6	-2.5	4.2	2.2	0.4
Cereals.....	10	2.186	286.7	280.6	-9.3	-0.1	2.0	0.6	-2.1
Oilseeds and misc. grains, seeds, fruits, plants, straw and fodder.....	12	2.219	277.8	290.3	10.8	0.5	7.1	6.1	4.5
Animal or vegetable fats and oils (Dec. 2009=100).....	III	0.489	154.7	157.8	0.3	-1.3	4.3	2.0	2.0
Prepared foodstuffs, beverages, and tobacco.....	IV	2.673	156.2	158.0	5.2	1.0	2.5	1.3	1.2
Preparations of vegetables, fruit, nuts or other parts of plants (Dec. 2009=100).....	20	0.319	110.7	111.1	3.5	0.4	0.3	0.4	0.4
Beverages, spirits, and vinegar (Dec. 2008=100).....	22	0.397	109.8	110.4	5.3	0.4	2.7	0.3	0.5
Residues and waste from the food industries; prepared animal feed.....	23	0.777	225.9	236.6	4.0	2.2	4.9	3.8	4.7
Mineral products.....	V	9.103	337.3	321.2	-6.1	0.3	2.5	2.1	-4.8
Mineral fuels, oils and residuals, bituminous substances and mineral waxes.....	27	8.482	334.4	317.3	-6.2	0.0	2.7	2.3	-5.1
Products of the chemical or allied industries.....	VI	12.163	155.5	155.2	0.9	0.4	0.3	0.0	-0.2
Inorganic chemicals.....	28	0.992	184.8	184.1	-6.2	0.2	-0.5	0.1	-0.4
Organic chemicals.....	29	3.470	170.4	169.1	0.2	1.4	0.6	0.0	-0.8
Pharmaceutical products.....	30	3.128	124.7	124.8	-0.3	0.0	0.3	-0.2	0.1
Essential oils and resinoids; perfumery cosmetic or toilet preparations.....	33	0.754	136.0	136.2	5.7	0.4	0.5	0.1	0.1
Soap; lubricants; waxes, polishing or scouring products; candles, pastes.....	34	0.462	123.1	123.4	0.8	-0.9	-0.1	0.2	0.2
Miscellaneous chemical products.....	38	1.748	153.1	152.9	2.1	0.1	0.6	-0.2	-0.1
Plastics and articles thereof; rubber and articles thereof.....	VII	5.600	154.1	153.1	0.7	1.4	1.0	1.9	-0.6
Plastics and articles thereof.....	39	4.460	143.5	142.8	-1.0	1.3	0.4	1.6	-0.5
Rubber and articles thereof.....	40	1.140	205.1	203.1	8.0	1.4	3.6	3.4	-1.0
Raw hides, skins, leather, furskins, travel goods, etc.....	VIII	0.372	132.9	134.2	-2.9	2.0	3.3	2.1	1.0
Wood, wood charcoal, cork, straw, basketware and wickerwork.....	IX	0.538	110.0	109.3	-0.4	1.5	-0.3	2.4	-0.6
Woodpulp, recovered paper, and paper products.....	X	2.316	119.0	118.1	-7.5	0.4	0.3	0.8	-0.8
Woodpulp and recovered paper.....	47	0.642	127.4	126.9	-17.7	2.3	1.3	0.4	-0.4
Paper and paperboard; articles of paper pulp, paper or paperboard.....	48	1.226	118.2	116.6	-3.3	-0.3	0.0	1.0	-1.4
Printed material.....	49	0.448	120.4	120.4	1.9	-0.1	0.0	0.8	0.0
Textile and textile articles.....	XI	1.961	131.0	128.6	-16.7	0.2	-1.4	-0.2	-1.8
Cotton, including yarns and woven fabrics thereof.....	52	0.647	157.0	148.5	-40.8	-0.2	-4.9	-1.2	-5.4
Stone, plaster, cement, asbestos, ceramics, glass etc. (Dec. 2008=100).....	XIII	0.735	117.7	117.7	1.6	0.3	0.5	-0.1	0.0
Glass and glassware.....	70	0.396	98.5	98.5	-0.9	-0.1	0.2	-0.3	0.0

See footnotes at end of table.

Table 6. U.S. export price indexes and percent changes for selected categories of goods: May 2011 to May 2012 — Continued

[2000=100, unless otherwise noted]

Description	Harmonized system	Relative importance Apr. 2012 ¹	Index		Percent change				
			Apr. 2012	May 2012	Annual	Monthly			
					May 2011 to May 2012	Jan. 2012 to Feb. 2012	Feb. 2012 to Mar. 2012	Mar. 2012 to Apr. 2012	Apr. 2012 to May 2012
Pearls, stones, precious metals, imitation jewelry, and coins.....	XIV	5.273	283.2	281.1	5.2	1.8	1.7	-3.1	-0.7
Base metals and articles of base metals.....	XV	5.618	179.0	178.7	-4.5	1.8	0.3	-0.2	-0.2
Iron and steel.....	72	1.758	224.4	226.0	-7.1	3.4	-0.7	-0.6	0.7
Articles of iron or steel.....	73	1.348	172.7	172.5	0.5	-0.8	0.8	0.1	-0.1
Copper and articles thereof.....	74	0.687	265.7	261.2	-5.5	5.4	2.0	-0.4	-1.7
Aluminum and articles thereof.....	76	0.837	129.0	127.8	-8.8	1.7	0.2	0.1	-0.9
Tools, implements, cutlery, spoons and forks, of base metal; parts thereof.....	82	0.374	129.2	129.2	3.0	0.2	0.0	0.0	0.0
Miscellaneous articles of base metal.....	83	0.318	138.0	138.0	2.1	0.4	1.0	0.0	0.0
Machinery, electrical equipment, TV image and sound recorders, parts, etc.....	XVI	27.383	97.3	97.3	1.4	0.1	0.1	0.0	0.0
Machinery and mechanical appliances; parts thereof.....	84	15.903	110.6	110.5	2.2	0.3	0.2	0.1	-0.1
Electrical machinery and equipment and parts and accessories thereof.....	85	11.480	82.8	83.0	0.2	-0.1	0.0	-0.2	0.2
Vehicles, aircraft, vessels and associated transport equipment.....	XVII	10.855	126.8	126.9	2.8	0.2	0.2	0.4	0.1
Motor vehicles and their parts.....	87	7.185	113.2	113.3	3.3	0.3	0.2	0.4	0.1
Optical, photo, measuring, medical & musical instruments; & timepieces.....	XVIII	5.723	105.7	106.8	1.3	0.6	0.2	0.2	1.0
Miscellaneous manufactured articles.....	XX	1.334	110.4	110.4	0.4	0.4	0.0	1.3	0.0
Furniture; stuffed furnishings; lamps and lighting fittings nesoi;.....	94	0.689	119.9	119.9	0.8	0.5	0.1	0.3	0.0
Toys, games and sports equipment; parts and accessories thereof.....	95	0.514	91.2	91.2	-1.6	0.3	0.1	0.0	0.0

1 Relative importance figures are based on 2010 trade values.

NOTES: Data may be revised in each of the three months after original publication.

Dash = Not available

Table 7. U.S. import price indexes and percent changes by locality of origin: May 2011 to May 2012
 [2000=100, unless otherwise noted]

Description	Percent of U.S. imports ¹	Index		Percent change				
		Apr. 2012	May 2012	Annual	Monthly			
				May 2011 to May 2012	Jan. 2012 to Feb. 2012	Feb. 2012 to Mar. 2012	Mar. 2012 to Apr. 2012	Apr. 2012 to May 2012
Industrialized Countries²	38.296	132.3	131.5	-2.5	-0.2	0.5	-0.5	-0.6
Nonmanufactured articles.....	4.447	222.3	213.6	-18.4	-1.8	-3.6	-3.2	-3.9
Manufactured articles.....	33.487	124.8	124.7	0.3	-0.1	1.2	-0.1	-0.1
Other Countries³	61.704	145.4	143.8	1.4	0.3	1.7	0.3	-1.1
Nonmanufactured articles.....	12.907	390.0	376.9	0.4	2.0	5.2	0.1	-3.4
Manufactured articles.....	48.593	112.6	112.4	1.9	-0.3	0.4	0.4	-0.2
Canada	14.414	152.4	150.4	-7.8	0.1	-0.6	-0.8	-1.3
Nonmanufactured articles.....	4.027	209.6	200.9	-20.6	-2.4	-4.3	-3.4	-4.2
Manufactured articles.....	10.122	140.9	140.7	-1.7	1.2	1.1	0.1	-0.1
European Union⁴	15.813	136.3	136.1	0.7	-0.1	1.0	0.0	-0.1
Nonmanufactured articles.....	0.262	403.4	391.6	13.0	5.6	2.8	0.0	-2.9
Manufactured articles.....	15.467	132.4	132.3	0.4	-0.2	0.9	0.0	-0.1
France (Dec. 2003=100)	1.736	121.7	121.7	1.9	-0.2	0.4	0.2	0.0
Germany (Dec. 2003=100)	4.265	115.0	114.9	-1.1	0.1	0.8	-0.1	-0.1
United Kingdom (Dec. 2003=100)	2.397	136.6	133.8	-0.2	0.9	1.3	0.0	-2.0
Latin America⁵	19.049	185.1	182.8	-0.4	-0.2	1.6	-0.1	-1.2
Nonmanufactured articles.....	5.633	416.6	403.6	0.4	0.0	4.0	-0.2	-3.1
Manufactured articles.....	13.328	135.1	135.0	-1.0	-0.4	0.3	-0.1	-0.1
Mexico (Dec. 2003=100)	12.091	148.9	147.9	-2.8	-1.0	1.1	-0.3	-0.7
Nonmanufactured articles (Dec. 2008=100).....	2.017	221.8	214.7	-1.2	-1.8	4.9	-1.3	-3.2
Manufactured articles (Dec. 2008=100)....	10.028	95.4	95.5	-3.1	-0.7	-0.1	0.0	0.1
Pacific Rim (Dec. 2003=100)⁶	34.659	104.8	104.8	0.6	0.0	0.0	-0.1	0.0
China (Dec. 2003=100)	19.583	105.2	105.2	1.7	0.1	0.0	-0.3	0.0
Japan	6.349	102.4	102.6	1.1	0.2	-0.1	0.0	0.2
Asian NICs⁷	5.471	91.0	91.1	-1.7	0.0	0.0	0.4	0.1
ASEAN (Dec. 2003=100)⁸	5.652	106.5	106.2	1.8	0.6	0.5	0.3	-0.3
Asia Near East (Dec. 2003=100)⁹	3.948	293.8	290.4	5.4	2.2	4.6	0.7	-1.2

1 Percentage of trade figures are based on 2010 trade values.

2 Includes Western Europe, Canada, Japan, Australia, New Zealand and South Africa.

3 Includes Eastern Europe, Latin America, OPEC countries, and other countries in Asia, Africa and the Western Hemisphere.

4 Includes European Union countries.

5 Includes Mexico, Central America, South America and the Caribbean.

6 Includes China, Japan, Australia, Brunei, Indonesia, Macao, Malaysia, New Zealand, Papua New Guinea, Philippines and Asian Newly Industrialized Countries.

7 Asian Newly Industrialized Countries. Includes Hong Kong, Singapore, South Korea and Taiwan.

8 Association of Southeast Asian Nations. Includes Brunei, Cambodia, Indonesia, Laos, Malaysia, Myanmar, Philippines, Singapore, Thailand and Vietnam.

9 Includes Bahrain, Iran, Iraq, Israel, Jordan, Kuwait, Lebanon, Oman, Qatar, Saudi Arabia, Syria, United Arab Emirates and Yemen.

NOTES: Data may be revised in each of the three months after original publication.

Regions are not mutually exclusive.

Dash = Not available

Table 8. U.S. international price indexes and percent changes for selected transportation services: May 2011 to May 2012

[2000=100, unless otherwise noted]

Description	Relative importance Apr. 2012 ¹	Index		Percent change				
		Apr. 2012	May 2012	Annual	Monthly			
				May 2011 to May 2012	Jan. 2012 to Feb. 2012	Feb. 2012 to Mar. 2012	Mar. 2012 to Apr. 2012	Apr. 2012 to May 2012
Air Freight								
Import Air Freight	100.000	177.0	177.5	-4.1	-1.1	2.6	1.9	0.3
Europe (Dec. 2003=100).....	23.971	163.4	165.3	-2.7	-1.6	3.0	-1.9	1.2
Asia.....	71.558	157.7	157.8	-4.7	-1.1	2.6	3.4	0.1
Export Air Freight	100.000	150.2	150.5	1.7	0.1	1.5	0.9	0.2
Europe (Dec. 2006=100).....	36.187	135.7	136.0	1.6	0.5	1.5	1.1	0.2
Inbound Air Freight	100.000	161.1	161.4	-2.2	-1.1	2.1	1.4	0.2
Europe (Dec. 2003=100).....	24.896	149.0	149.8	-2.6	-1.0	2.7	-0.4	0.5
Asia.....	63.675	145.0	145.1	-2.0	-1.6	2.2	2.3	0.1
Outbound Air Freight	100.000	149.9	150.2	4.7	0.3	1.2	2.5	0.2
Europe (Dec. 2003=100).....	30.379	165.7	166.6	4.4	0.7	1.2	0.2	0.5
Asia.....	50.019	143.5	143.4	5.3	0.2	1.4	4.6	-0.1
Air Passenger Fares								
Import Air Passenger Fares	100.000	180.0	181.1	5.1	0.3	-1.0	0.7	0.6
Europe.....	39.190	187.5	185.3	0.2	0.2	-2.4	3.8	-1.2
Asia.....	25.944	148.7	157.8	10.2	1.3	-6.6	0.8	6.1
Latin America/Caribbean.....	12.617	181.9	171.0	0.8	-0.6	0.3	2.1	-6.0
Export Air Passenger Fares	100.000	186.4	192.3	4.9	-4.5	-0.8	0.7	3.2
Europe.....	28.202	225.0	221.0	4.0	5.1	-4.7	7.7	-1.8
Asia.....	28.157	168.1	179.2	1.8	-14.7	3.0	0.7	6.6
Latin America/Caribbean.....	24.151	218.1	206.7	13.3	12.3	-0.9	-7.7	-5.2

¹ Relative importance figures are based on 2010 trade values.

NOTES: Data may be revised in each of the three months after original publication.

Dash = Not available

TECHNICAL NOTE

Import and Export Merchandise and Services Price Indexes -- All indexes use a modified Laspeyres formula and are not seasonally adjusted. Price indexes are reweighted annually, with a two-year lag in the weights. Published series use a base year of 2000=100 where possible. More detailed index series and additional information may be obtained at <http://www.bls.gov/mxp>, or by calling (202) 691-7101.

Merchandise Goods Classification Systems -- The merchandise price indexes are published using three classification systems. Items are classified by end use according to the Bureau of Economic Analysis Classification System, by industry according to the North American Industry Classification System (NAICS), and by product category according to the Harmonized System (HS). While classification by end use and product category are self-explanatory, some notes are in order for classifying items by industry. In the NAICS imports and exports tables, items are classified by output industry, not input industry. As an example, NAICS import index 326 (plastics and rubber products manufacturing) include outputs such as manufactured plastic rather than inputs such as petroleum. The NAICS classification structure also matches the classification system used by the PPI (Producer Price Index) to produce the NAICS primary products indexes.

Import Price Indexes -- Products have been classified by the Harmonized Tariff Schedule of the United States Annotated (TSUSA). Import prices are based on U.S. dollar prices paid by the U.S. importer. The prices are generally either "free on board" (f.o.b.) foreign port or "cost, insurance, and freight" (c.i.f.) U.S. port transaction prices, depending on the practices of the individual industry. The index for crude petroleum is calculated from data collected by the U.S. Department of Energy.

Export Price Indexes -- Products have been classified by the Harmonized Schedule B classification system of the U.S. Bureau of the Census. The prices used are generally either "free alongside ship" (f.a.s.) factory or "free on board" (f.o.b.) transaction prices, depending on the practices of the individual industry. Prices used in the grain index, excluding rice, are obtained from the U.S. Department of Agriculture.

Services Price Indexes -- Starting in September 2008 the Import Air Passenger Fares Indexes represent changes in the average revenue per passenger received by foreign carriers from U.S. residents and are calculated from data obtained from an airline consulting service. These data include tickets sold by travel agencies and travel websites. Tickets sold directly by the airlines are excluded, as are frequent flyer tickets generally. Starting in January 2008 the Export Air Passenger Fares Indexes represent changes in the average revenue per passenger received by U.S. carriers from foreign residents and are calculated from data collected directly from airlines. These data include frequent flyer tickets and those sold by consolidators. Taxes and fees are included in the Import Air Passenger Fares Index and excluded from the Export Air Passenger Fares Index. The Air Freight Indexes are calculated from data collected directly from airlines. These data exclude mail and passenger baggage. The scope of the service being priced is the movement of freight from airport to airport only, and does not include any ground transportation or port service. The Air Freight Indexes are presented using two definitions: Balance of Payments (which represent transactions between U.S. and foreign residents) and International (which represent transactions inbound to and outbound from the U.S.). Fact sheets specifying detailed information for each services industry are available at <http://www.bls.gov/mxp> under "MXP Publications."

Import Indexes by Locality of Origin -- Prices used in these indexes are a subset of the data collected for the Import Price Indexes. Beginning with January 2002, the indexes are defined by locality of origin using a nomenclature based upon the North American Industry Classification System (NAICS). Nonmanufactured goods are defined as NAICS 11 and 21 and manufactured goods are defined as NAICS 31-33.

Revision Policy -- To reflect the availability of late reports and corrections by respondents, monthly data may be revised in each of the three months after original publication. After three months, no further data revisions take place. So, for example, data released in the January release will be subject to revision in the releases for February, March, and April.

Uses of the Data -- The primary use of the indexes is to deflate trade statistics, notably the foreign trade sector of the National Income and Product Accounts constructed by the Department of Commerce. Other published indexes are useful for general market analysis. For trade in international services, Balance of Payments indexes are used for deflating National Income and Product Accounts, while International indexes are more appropriate for market analysis. Merchandise and services indexes also can be used to study U.S. competitiveness and to compute price elasticities, and the merchandise import indexes by country or region of origin are useful in terms of trade analysis.

E-Mail Subscription -- The U.S. Import and Export Price Indexes news release is available through an e-mail subscription service at (<http://www.bls.gov/bls/list.htm>).

Additional Information -- More detailed data are available on the Import/Export Price Indexes home page at (<http://www.bls.gov/mxp>). Flat Files and the FTP server are available for users requiring access to either a large volume of time series data or other related documentation. The FTP site can be accessed at <ftp://ftp.bls.gov>. For technical assistance in using the BLS Internet site, send e-mail to (labstat.helpdesk@bls.gov). For Import/Export Price Index data requests, send e-mail to (mxpinfo@bls.gov).

Information from this release will be made available to sensory impaired individuals upon request. Voice phone: 202-691-5200; Federal Relay Service: 1-800-877-8339.