

Transmission of material in this release is embargoed until  
8:30 a.m. (EDT) Thursday, June 13, 2013

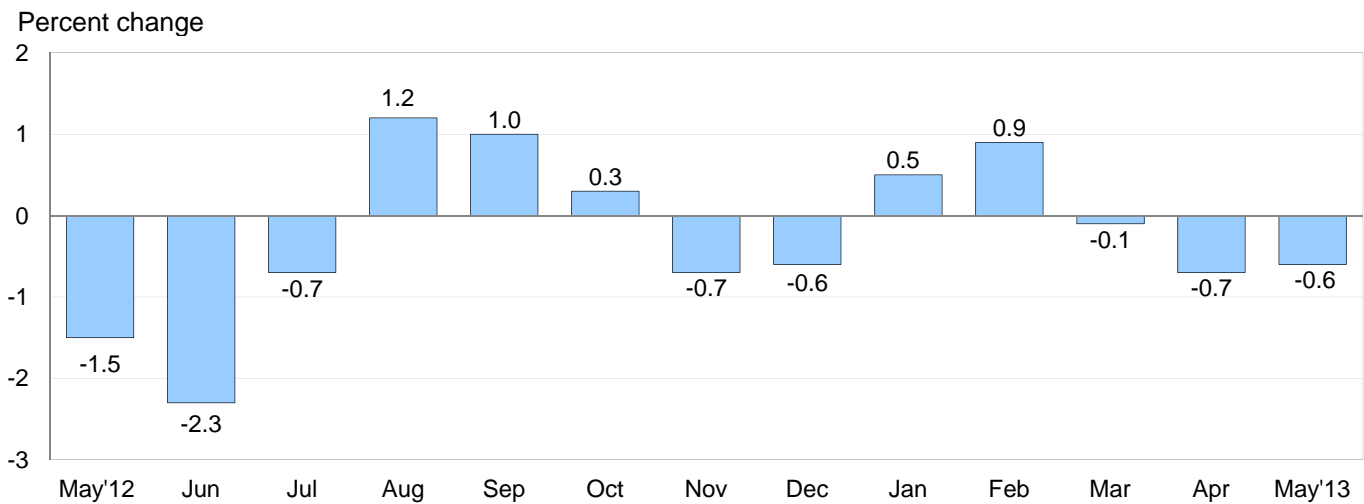
USDL-13-1142

Technical information: (202) 691-7101 • MXPinfo@bls.gov • www.bls.gov/mxp  
Media contact: (202) 691-5902 • PressOffice@bls.gov

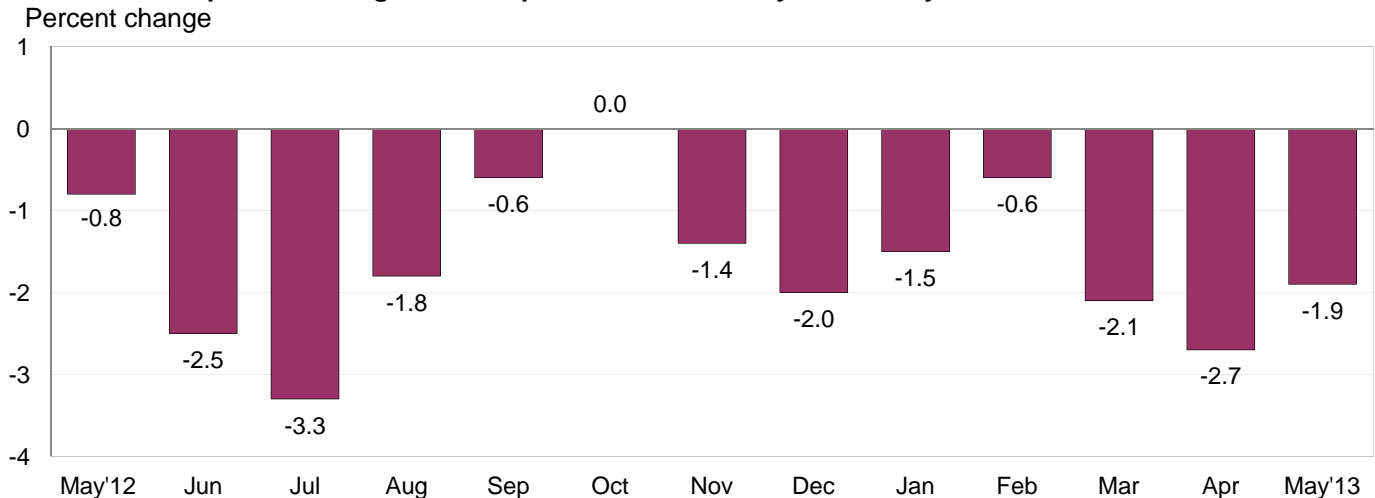
**U.S. IMPORT AND EXPORT PRICE INDEXES – MAY 2013**

Prices for U.S. imports declined 0.6 percent in May, the U.S. Bureau of Labor Statistics reported today, after a 0.7 percent drop the previous month. Falling fuel and nonfuel prices contributed to the decreases in both months. U.S. export prices fell 0.5 percent in May following declines of 0.7 percent in April and 0.5 percent in March.

**Chart 1. One-month percent change in the Import Price Index: May 2012 – May 2013**



**Chart 2. 12-month percent change in the Import Price Index: May 2012 – May 2013**



**All Imports:** U.S. import prices decreased for the third consecutive month in May, falling 0.6 percent, after declines of 0.7 percent in April and 0.1 percent in March. The 1.4 percent drop in import prices over the past three months followed a 1.4 percent increase for the first two months of 2013. Overall import prices fell 1.9 percent for the year ended in May, and have not recorded a 12-month advance since the index rose 0.8 percent between April 2011 and April 2012.

**Fuel Imports:** Import fuel prices fell 1.9 percent in May; the decline was the largest contributor to the drop in import prices and followed a 2.5 percent decrease the previous month. For the year, the price index for import fuel decreased 4.4 percent. Both the May decline and the decrease over the past 12 months were led by falling petroleum prices, which more than offset rising natural gas prices. Prices for petroleum declined 2.0 percent in May and 6.2 percent for the May 2012-13 period. In contrast, natural gas prices rose 1.2 percent in May after advancing 7.9 percent in April. Prices for natural gas increased 97.0 percent over the past year, after decreasing 49.0 percent between May 2011 and May 2012.

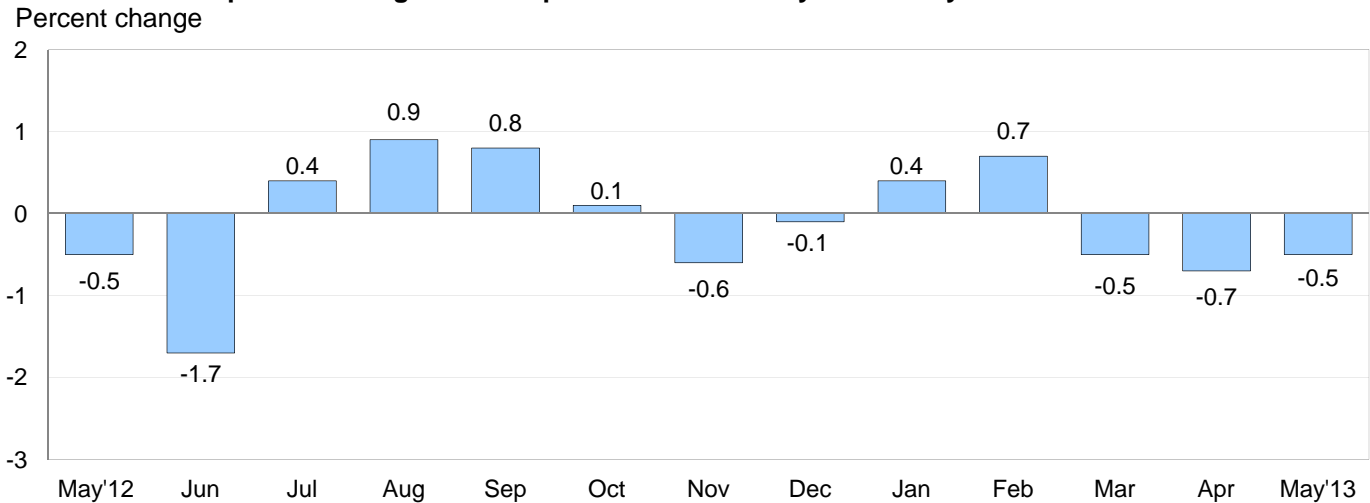
**All Imports Excluding Fuel:** The price index for nonfuel imports also fell in May, declining 0.3 percent following drops of 0.2 percent in April and 0.1 percent in March. The decline in nonfuel import prices was led by falling prices for nonfuel industrial supplies and materials, although declining finished goods prices also contributed to the decrease. In contrast, foods, feeds, and beverages prices rose in May. Nonfuel import prices fell 1.1 percent over the past 12 months.

**Table A. Import and export price indexes, selected categories**  
Percent changes

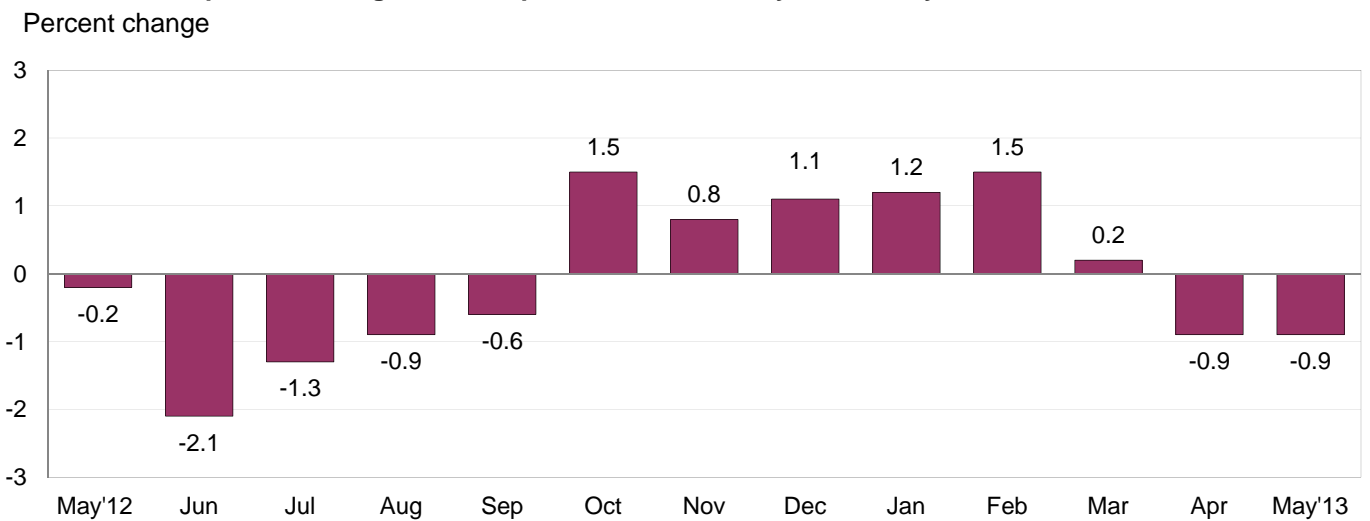
Month	IMPORTS			EXPORTS		
	All imports	Fuel imports	Nonfuel imports	All exports	Agricultural exports	Non-agricultural exports
<b>2012</b>						
May.....	-1.5	-5.6	-0.1	-0.5	0.5	-0.6
June.....	-2.3	-8.5	-0.3	-1.7	-3.5	-1.5
July.....	-0.7	-2.0	-0.4	0.4	6.0	-0.2
August.....	1.2	6.1	-0.2	0.9	4.8	0.4
September.....	1.0	3.9	0.2	0.8	1.3	0.7
October.....	0.3	0.1	0.2	0.1	-1.7	0.3
November.....	-0.7	-2.2	-0.2	-0.6	0.5	-0.7
December.....	-0.6	-2.2	-0.1	-0.1	0.1	-0.2
<b>2013</b>						
January.....	0.5	1.9	0.2	0.4	-1.2	0.5
February.....	0.9	3.6 <sup>r</sup>	0.1	0.7	2.0	0.6
March.....	-0.1 <sup>r</sup>	0.2 <sup>r</sup>	-0.1	-0.5	-1.8 <sup>r</sup>	-0.3
April.....	-0.7 <sup>r</sup>	-2.5 <sup>r</sup>	-0.2	-0.7	-2.3 <sup>r</sup>	-0.5
May.....	-0.6	-1.9	-0.3	-0.5	1.0	-0.7
May 2011 to 2012.....	-0.8	-5.5	0.9	-0.2	-1.6	0.0
May 2012 to 2013.....	-1.9	-4.4	-1.1	-0.9	4.7	-1.6

r Revised

**Chart 3. One-month percent change in the Export Price Index: May 2012 – May 2013**



**Chart 4. 12-month percent change in the Export Price Index: May 2012 – May 2013**



**All Exports:** Prices for U.S. exports decreased 0.5 percent in May, driven by lower nonagricultural prices which more than offset higher agricultural prices. The May decrease in export prices marked the first time the index has declined for at least three consecutive months since the end of 2008. The price index for exports fell 0.9 percent over the past year, led by falling nonagricultural prices. In contrast, agricultural prices rose over the same period.

**Agricultural Exports:** Agricultural exports advanced 1.0 percent in May, after falling 2.3 percent in April. The May increase was driven by rising prices for fruit, soybeans, wheat, and corn. Prices for agricultural exports rose 4.7 percent from May 2012 to May 2013, resulting from a 12.4 percent increase for the third quarter of 2012.

**All Exports Excluding Agriculture:** Prices for nonagricultural exports fell 0.7 percent in May, the largest monthly decline for the index since a 0.7 percent decrease in November 2012. The May decline was led by a drop in the price index for nonagricultural industrial supplies and materials, although finished goods prices also decreased for the month. Nonagricultural export prices fell over the past 12 months, declining 1.6 percent.

## SELECTED MAY HIGHLIGHTS

### Import Prices

**Imports by Locality of Origin:** Import prices from Japan continued a recent downward trend in May, falling 0.4 percent. The decline followed decreases of 0.6 percent in April, 0.2 percent in March, and 0.5 percent in February. Overall, prices for imports from Japan fell 1.4 percent over the past year, the largest 12-month drop for the index since a 1.5 percent decrease in November 2006. The price index for imports from China also declined in May, falling 0.2 percent. Import prices from China have not recorded a monthly increase since February 2012 and decreased 1.0 percent for the year ended in May. Prices for imports from Canada and the European Union also fell in May, declining 0.9 percent and 0.1 percent respectively, while import prices from Mexico ticked up 0.1 percent.

**Nonfuel Industrial Supplies and Materials:** Nonfuel industrial supplies and materials prices declined 1.4 percent in May, driven by a 3.9 percent drop in unfinished metals prices. A 1.1 percent decline in chemical prices and a 1.8 percent fall in the price index for selected building materials also contributed to the decrease.

**Finished Goods:** Consumer goods prices declined 0.3 percent in May, offsetting a 0.3 percent advance the previous month. The May drop was the largest monthly decrease since the index fell 0.5 percent in October 2010 and was led by lower prices for medicinal, dental, and pharmaceutical products. Prices for automotive vehicles also fell in May, declining 0.2 percent after drops of 0.3 percent in April and 0.2 percent in March. The price index for capital goods recorded no change in May.

**Foods, Feeds, and Beverages:** The price index for foods, feeds, and beverages increased 0.4 percent in May, after a 0.5 percent decline in April. The May advance was led by a 4.1 percent rise in vegetable prices which had dropped 8.3 percent the previous month.

**Transportation Services:** Import air passenger fares rose 2.0 percent in May, led by a 3.2 percent advance in Asian fares. The May increase in import air passenger fares followed a 0.3 percent rise in April. The index for import air passenger fares rose 2.6 percent over the past year, driven by a 12.4 percent advance in European fares. Import air freight prices fell 0.3 percent in May and 2.9 percent over the past 12 months.

### Export Prices

**Nonagricultural Industrial Supplies and Materials:** Nonagricultural industrial supplies and materials prices declined 1.8 percent in May following a 1.0 percent drop the previous month. A 5.5 percent fall in nonferrous metals prices and a 2.3 percent decline in fuel prices drove the May decrease.

**Finished Goods:** Capital goods prices and prices for automotive vehicles edged down 0.1 percent in May, while consumer goods prices were unchanged. The decrease in capital goods prices was led by a 0.5 percent drop in the price index for computers, peripherals, and semiconductors, while the decline in automotive vehicles prices was driven by a 0.3 percent decrease in passenger car prices.

**Transportation Services:** Export air passenger fares rose 5.9 percent in May after declining 2.6 percent the previous month. The May increase was led by a 9.1 percent advance in Asian fares and a 4.5 percent rise in European fares. Despite the May advance, export air passenger fares fell 3.7 percent over the past 12 months. Export air freight prices declined 1.1 percent in May and 2.0 percent over the past year.

---

**Import and Export Price Index data for June 2013 are scheduled for release on Thursday, July 11, 2013 at 8:30 a.m. (EDT).**

**Table 1. U.S. import price indexes and percent changes for selected categories of goods: May 2012 to May 2013**

[2000=100, unless otherwise noted]

Description	End Use	Relative importance Apr. 2013 <sup>1</sup>	Index		Percent change				
			Apr. 2013	May 2013	Annual	Monthly			
					May 2012 to May 2013	Jan. 2013 to Feb. 2013	Feb. 2013 to Mar. 2013	Mar. 2013 to Apr. 2013	Apr. 2013 to May 2013
<b>All commodities</b> .....		100.000	140.2	139.3	-1.9	0.9	-0.1	-0.7	-0.6
<b>All imports excluding food and fuels (Dec. 2010=100)</b> .....		73.781	103.2	102.8	-1.2	0.0	-0.2	-0.2	-0.4
<b>All imports excluding petroleum</b> .....		79.798	116.4	116.0	-0.5	0.0	-0.1	-0.1	-0.3
<b>All imports excluding fuels (Dec. 2001=100)</b> ..		78.799	120.3	119.9	-1.1	0.1	-0.1	-0.2	-0.3
<b>Foods, feeds, &amp; beverages</b> .....	0	5.018	172.8	173.5	0.2	1.2	1.6	-0.5	0.4
Agricultural foods, feeds & beverages, excluding distilled beverages.....	00	3.859	192.0	192.7	-1.3	1.1	1.4	-1.3	0.4
Nonagricultural foods (fish, distilled beverages).....	01	1.159	129.1	130.1	5.8	1.5	2.7	2.1	0.8
<b>Industrial supplies &amp; materials</b> .....	1	34.645	253.3	249.0	-4.6	2.3	-0.1	-1.8	-1.7
Industrial supplies & materials excluding petroleum.....		14.443	166.5	164.3	-1.7	-0.1	-0.4	-0.3	-1.3
Industrial supplies & materials excluding fuels (Dec. 2001=100).....		13.444	187.2	184.5	-4.8	0.1	-0.4	-0.7	-1.4
Industrial supplies & materials, durable.....		7.990	176.2	172.4	-4.2	-0.1	-0.1	-1.0	-2.2
Industrial supplies & materials nondurable excluding petroleum.....		5.455	154.6	154.3	1.5	-0.1	-0.7	0.5	-0.2
Fuels & lubricants.....	10	21.201	338.3	332.0	-4.4	3.6	0.2	-2.5	-1.9
Petroleum & petroleum products.....	100	20.202	375.3	367.9	-6.2	3.9	0.2	-2.8	-2.0
Crude.....	10000	15.321	385.2	383.1	-5.8	4.2	-0.3	-3.1	-0.5
Fuels, n.e.s.-coals & gas.....	101	0.790	131.7	132.5	76.0	-2.1	0.2	6.3	0.6
Gas-natural.....	10110	0.662	118.2	119.6	97.0	-2.1	-0.2	7.9	1.2
Paper & paper base stocks.....	11	0.557	112.7	113.5	-0.8	1.0	-0.3	0.0	0.7
Materials associated with nondurable supplies & materials.....	12	4.976	174.3	173.5	-6.1	0.2	-1.0	-0.3	-0.5
Selected building materials.....	13	1.063	151.0	148.3	8.6	0.5	0.9	1.4	-1.8
Unfinished metals related to durable goods.....	14	3.733	258.1	248.0	-9.3	0.1	-0.4	-2.1	-3.9
Finished metals related to durable goods. . .	15	1.585	159.5	158.9	-2.8	-0.8	-0.2	-0.6	-0.4
Nonmetals related to durable goods.....	16	1.530	114.2	113.8	-1.6	-0.1	-0.1	-0.2	-0.4
<b>Capital goods</b> .....	2	23.939	92.8	92.8	-0.5	-0.1	-0.1	-0.2	0.0
Electric generating equipment.....	20	2.986	119.4	119.1	-0.1	-0.1	-0.2	0.0	-0.3
Nonelectrical machinery.....	21	19.098	85.5	85.5	-0.9	-0.2	-0.1	-0.3	0.0
Transportation equipment excluding motor vehicles (Dec. 2001=100).....	22	1.855	135.8	135.8	1.6	0.1	0.4	0.1	0.0
<b>Automotive vehicles, parts &amp; engines</b> .....	3	12.165	114.4	114.2	-0.2	0.0	-0.2	-0.3	-0.2
<b>Consumer goods, excluding automotives</b> ..	4	24.233	108.0	107.7	0.0	0.1	-0.2	0.3	-0.3
Nondurables, manufactured.....	40	11.828	116.6	116.1	1.0	0.3	-0.3	0.7	-0.4
Durables, manufactured.....	41	11.088	99.1	99.0	-0.8	-0.3	-0.2	-0.1	-0.1
Nonmanufactured consumer goods.....	42	1.318	116.6	116.9	-2.3	0.3	0.6	0.2	0.3

<sup>1</sup> Relative importance figures are based on 2011 trade values.

NOTES: Data may be revised in each of the three months after original publication.

Dash = Not available

**Table 2. U.S. export price indexes and percent changes for selected categories of goods: May 2012 to May 2013**

[2000=100, unless otherwise noted]

Description	End Use	Relative importance Apr. 2013 <sup>1</sup>	Index		Percent change				
			Apr. 2013	May 2013	Annual	Monthly			
					May 2012 to May 2013	Jan. 2013 to Feb. 2013	Feb. 2013 to Mar. 2013	Mar. 2013 to Apr. 2013	Apr. 2013 to May 2013
<b>All commodities</b> .....		100.000	133.5	132.8	-0.9	0.7	-0.5	-0.7	-0.5
<b>Agricultural commodities</b> .....		10.349	219.7	222.0	4.7	2.0	-1.8	-2.3	1.0
<b>All exports excluding food and fuels (Dec. 2010=100)</b> .....		81.129	102.9	102.4	-0.9	0.2	-0.3	-0.2	-0.5
<b>Nonagricultural commodities</b> .....		89.651	127.2	126.3	-1.6	0.6	-0.3	-0.5	-0.7
<b>Foods, feeds, &amp; beverages</b> .....	0	9.613	219.9	221.7	4.5	1.8	-1.9	-2.5	0.8
Agricultural foods, feeds & beverages, excluding distilled beverages.....	00	8.924	223.3	226.1	5.1	1.9	-2.1	-2.7	1.3
Nonagricultural foods (fish, distilled beverages).....	01	0.689	190.4	182.1	-3.3	-0.1	0.6	-0.4	-4.4
<b>Industrial supplies &amp; materials</b> .....	1	34.276	181.2	178.1	-4.1	1.4	-0.7	-1.0	-1.7
Industrial supplies & materials, durable.....		12.190	182.0	177.4	-5.8	0.4	-1.5	-0.4	-2.5
Industrial supplies & materials, nondurable.....		22.088	181.6	179.3	-3.1	2.0	-0.2	-1.3	-1.3
Agricultural industrial supplies & materials...	10	1.425	204.8	204.4	3.1	2.4	0.0	-0.1	-0.2
<b>Nonagricultural industrial supplies &amp; materials</b> .....		32.851	180.5	177.3	-4.4	1.4	-0.7	-1.0	-1.8
Fuels & lubricants.....	11	9.258	256.9	250.9	-7.7	3.7	-0.5	-2.8	-2.3
Nonagricultural supplies & materials excluding fuels & building materials.....	12	22.570	171.7	168.8	-3.5	0.5	-0.9	-0.4	-1.7
Selected building materials.....	13	1.023	122.1	122.9	4.8	0.6	1.0	1.2	0.7
<b>Capital goods</b> .....	2	35.287	106.5	106.4	0.4	0.3	-0.1	-0.1	-0.1
Electrical generating equipment.....	20	3.485	114.9	115.1	0.9	0.3	-0.2	0.0	0.2
Nonelectrical machinery.....	21	25.644	95.4	95.2	0.0	0.2	-0.1	-0.2	-0.2
Transportation equipment excluding motor vehicles (Dec. 2001=100).....	22	6.159	151.6	151.6	1.7	0.7	0.2	0.0	0.0
<b>Automotive vehicles, parts &amp; engines</b> .....	3	8.919	113.5	113.4	0.4	0.3	0.0	0.0	-0.1
<b>Consumer goods, excluding automotives</b> ..	4	11.905	115.4	115.4	-1.3	-0.3	-0.3	-0.3	0.0
Nondurables, manufactured.....	40	5.419	114.3	114.8	-0.1	-0.3	-0.3	-0.6	0.4
Durables, manufactured.....	41	5.091	112.3	111.8	-2.9	-0.4	-0.4	0.0	-0.4

<sup>1</sup> Relative importance figures are based on 2011 trade values.

NOTES: Data may be revised in each of the three months after original publication.

Dash = Not available

**Table 3. U.S. import price indexes and percent changes for selected categories of goods: May 2012 to May 2013**

[December 2005=100, unless otherwise noted]

Description	NAICS	Relative importance Apr. 2013 <sup>1</sup>	Index		Percent change				
			Apr. 2013	May 2013	Annual	Monthly			
					May 2012 to May 2013	Jan. 2013 to Feb. 2013	Feb. 2013 to Mar. 2013	Mar. 2013 to Apr. 2013	Apr. 2013 to May 2013
<b>Nonmanufactured articles.....</b>		18.445	166.8	166.2	-2.7	3.8	0.3	-2.6	-0.4
<b>Agriculture, forestry, fishing and hunting...</b>	11	1.819	172.8	175.0	-0.1	3.4	4.2	-2.3	1.3
Crop production.....	111	1.265	176.3	180.6	-1.1	4.4	5.0	-3.5	2.4
Forestry and logging (Dec. 2012=100).....	113	0.200	103.3	105.4	—	0.6	-1.3	-1.7	2.0
<b>Mining.....</b>	21	16.626	165.8	164.9	-3.0	3.9	-0.2	-2.6	-0.5
Mining (except oil and gas) (Dec. 2006=100).....	212	0.321	133.5	134.0	-7.8	-0.1	-0.5	-0.4	0.4
<b>Manufactured articles.....</b>		81.088	117.3	116.5	-1.5	0.1	-0.1	-0.3	-0.7
<b>Manufactured goods, part 1.....</b>	31	10.463	123.6	123.8	-1.7	0.0	-0.2	0.1	0.2
Food manufacturing.....	311	2.846	154.2	155.5	-5.1	-0.3	-0.8	0.3	0.8
Beverage and tobacco product manufacturing.....	312	0.870	113.3	113.4	1.3	0.1	0.0	-0.2	0.1
Textile mills (Dec. 2011=100).....	313	0.389	101.9	101.8	0.0	0.1	-0.1	0.0	-0.1
Textile product mills.....	314	0.784	115.4	115.5	-0.5	0.0	-0.3	0.1	0.1
Apparel manufacturing.....	315	3.920	110.5	110.4	-1.4	0.3	0.0	-0.1	-0.1
Leather and allied product manufacturing. . .	316	1.653	121.6	121.5	1.8	0.1	0.1	0.2	-0.1
<b>Manufactured goods, part 2.....</b>	32	18.103	139.6	136.5	-2.4	1.0	0.1	-0.2	-2.2
Wood product manufacturing.....	321	0.652	133.1	129.3	12.8	0.9	1.2	2.3	-2.9
Paper manufacturing.....	322	1.026	110.1	110.6	-0.7	0.5	-0.3	0.0	0.5
Petroleum and coal products manufacturing.....	324	4.324	167.2	156.1	-8.7	2.7	1.4	-2.1	-6.6
Chemical manufacturing.....	325	9.253	136.9	135.5	-0.8	0.6	-0.3	0.4	-1.0
Plastics and rubber products manufacturing.....	326	1.935	126.3	126.0	-1.4	0.1	-0.1	-0.6	-0.2
Nonmetallic mineral product manufacturing.....	327	0.830	129.0	129.0	-0.7	-0.4	-0.1	0.1	0.0
<b>Manufactured goods, part 3.....</b>	33	52.521	109.2	108.8	-1.2	-0.2	-0.1	-0.4	-0.4
Primary metal manufacturing.....	331	4.349	168.9	163.0	-9.4	-0.2	-0.5	-2.2	-3.5
Fabricated metal product manufacturing. . .	332	2.667	129.2	128.2	-1.1	0.0	-0.4	-0.2	-0.8
Machinery manufacturing.....	333	6.575	121.3	121.8	0.4	-0.2	-0.3	-0.3	0.4
Computer and electronic product manufacturing.....	334	15.953	81.1	81.1	-1.5	-0.2	-0.2	-0.1	0.0
Electrical equipment, appliance, and component manufacturing.....	335	3.997	119.4	119.2	0.7	0.0	0.0	-0.3	-0.2
Transportation equipment manufacturing. . .	336	12.913	112.3	112.1	0.5	0.0	-0.1	-0.2	-0.2
Furniture and related product manufacturing.....	337	1.249	114.4	114.4	1.0	-0.1	0.4	0.1	0.0
Miscellaneous manufacturing.....	339	4.817	120.8	120.6	-1.4	-0.1	0.2	0.0	-0.2

<sup>1</sup> Relative importance figures are based on 2011 trade values.

NOTES: Data may be revised in each of the three months after original publication.

Dash = Not available

**Table 4. U.S. export price indexes and percent changes for selected categories of goods: May 2012 to May 2013**

[December 2005=100, unless otherwise noted]

Description	NAICS	Relative importance Apr. 2013 <sup>1</sup>	Index		Percent change				
			Apr. 2013	May 2013	Annual	Monthly			
					May 2012 to May 2013	Jan. 2013 to Feb. 2013	Feb. 2013 to Mar. 2013	Mar. 2013 to Apr. 2013	Apr. 2013 to May 2013
<b>Nonmanufactured articles.....</b>		7.756	168.8	171.2	2.1	2.6	-1.6	-3.0	1.4
<b>Agriculture, forestry, fishing and hunting...</b>	11	5.643	206.7	210.3	4.1	3.2	-2.0	-4.0	1.7
Crop production.....	111	5.172	213.3	218.8	4.0	3.0	-2.1	-4.8	2.6
<b>Mining.....</b>	21	2.113	93.4	93.8	-5.0	0.8	-0.4	0.0	0.4
Mining (except oil and gas).....	212	1.425	106.2	105.4	-13.6	0.7	-1.1	-0.7	-0.8
<b>Manufactured articles.....</b>		89.764	121.1	120.3	-1.1	0.5	-0.2	-0.5	-0.7
<b>Manufactured goods, part 1.....</b>	31	7.010	151.5	150.8	2.4	0.1	-0.4	-0.3	-0.5
Food manufacturing.....	311	4.929	173.8	172.5	2.3	0.2	-0.5	-0.5	-0.7
Beverage and tobacco product manufacturing.....	312	0.570	127.3	126.6	5.9	0.7	-0.3	-0.7	-0.5
<b>Manufactured goods, part 2.....</b>	32	26.443	133.6	132.4	-2.5	1.5	-0.2	-1.1	-0.9
Wood product manufacturing.....	321	0.418	117.2	118.3	3.3	0.6	1.5	1.0	0.9
Paper manufacturing.....	322	1.807	121.1	121.8	3.0	0.1	0.5	0.2	0.6
Petroleum and coal products manufacturing.....	324	6.936	164.0	158.7	-8.8	4.6	-0.3	-4.0	-3.2
Chemical manufacturing.....	325	14.258	131.4	131.1	-1.4	0.3	-0.2	-0.4	-0.2
Plastics and rubber products manufacturing.....	326	2.233	120.7	121.3	3.0	0.1	-0.2	0.9	0.5
Nonmetallic mineral product manufacturing.....	327	0.791	112.4	112.0	0.4	0.1	1.2	0.5	-0.4
<b>Manufactured goods, part 3.....</b>	33	56.311	113.3	112.7	-0.8	0.2	-0.2	-0.2	-0.5
Primary metal manufacturing.....	331	5.093	165.7	158.9	-8.7	-0.4	-1.4	-1.0	-4.1
Fabricated metal product manufacturing. . .	332	2.764	132.2	131.4	0.5	0.2	-0.2	0.2	-0.6
Machinery manufacturing.....	333	11.598	122.0	122.0	1.3	0.2	-0.1	0.0	0.0
Computer and electronic product manufacturing.....	334	14.160	88.8	88.6	-1.8	0.1	-0.1	-0.4	-0.2
Electrical equipment, appliance, and component manufacturing.....	335	3.305	114.0	114.3	1.4	0.1	-0.1	0.3	0.3
Transportation equipment manufacturing. . .	336	14.122	117.9	117.9	0.9	0.4	0.1	0.0	0.0
Furniture and related product manufacturing (Dec. 2011=100).....	337	0.315	105.8	105.4	2.7	0.3	0.1	0.3	-0.4
Miscellaneous manufacturing.....	339	4.955	122.3	121.8	-0.7	0.1	-0.5	0.0	-0.4

1 Relative importance figures are based on 2011 trade values.

NOTES: Data may be revised in each of the three months after original publication.

Dash = Not available



**Table 5. U.S. import price indexes and percent changes for selected categories of goods: May 2012 to May 2013**

[2000=100, unless otherwise noted]

Description	Harmonized system	Relative importance Apr. 2013 <sup>1</sup>	Index		Percent change				
			Apr. 2013	May 2013	Annual	Monthly			
					May 2012 to May 2013	Jan. 2013 to Feb. 2013	Feb. 2013 to Mar. 2013	Mar. 2013 to Apr. 2013	Apr. 2013 to May 2013
<b>Live animals; animal products.....</b>	I	1.124	175.4	176.1	6.9	1.6	2.9	1.7	0.4
Meat and edible meat offal.....	02	0.251	219.1	219.9	3.5	0.4	-2.0	1.0	0.4
Fish and crustaceans, molluscs and other aquatic invertebrates.....	03	0.619	128.9	130.5	9.5	3.0	5.7	2.8	1.2
<b>Vegetable products.....</b>	II	1.619	208.7	212.3	-5.9	3.0	2.5	-2.7	1.7
Edible vegetables, roots, and tubers.....	07	0.339	330.7	353.3	10.7	6.3	13.4	-12.5	6.8
Edible fruit and nuts; peel of citrus fruit or melons.....	08	0.452	122.4	121.0	-1.1	4.2	2.2	3.3	-1.1
Coffee, tea, mate and spices.....	09	0.369	240.1	240.2	-11.6	3.6	1.1	-4.2	0.0
<b>Animal or vegetable fats and oils (Dec. 2009=100).....</b>	III	0.252	117.9	116.5	-15.0	1.4	-1.6	-1.2	-1.2
<b>Prepared foodstuffs, beverages, and tobacco.....</b>	IV	2.382	156.8	157.6	-0.1	-0.4	0.1	-0.4	0.5
Sugars and sugar confectionary (Dec. 2012=100).....	17	0.207	98.2	96.9	-	-0.3	0.5	-2.9	-1.3
Cocoa and cocoa preparations (Dec. 2009=100).....	18	0.192	85.6	87.4	2.1	-4.7	-1.3	-0.8	2.1
Preparations of cereals, flour, starch or milk; bakers' wares (Dec. 2007=100).....	19	0.240	132.1	132.1	4.5	0.8	0.5	0.2	0.0
Preparations of vegetables, fruit, nuts, or other parts of plants.....	20	0.306	160.5	163.5	-5.3	-0.6	-0.5	-0.3	1.9
Beverages, spirits, and vinegar.....	22	0.859	124.1	124.5	1.7	0.0	0.0	-0.2	0.3
<b>Mineral products.....</b>	V	21.115	340.3	334.4	-4.3	3.7	0.1	-2.5	-1.7
Mineral fuels, oils and residuals, bituminous substances and mineral waxes.....	27	20.833	337.1	331.0	-4.2	3.7	0.1	-2.5	-1.8
<b>Products of the chemical or allied industries.....</b>	VI	8.675	151.9	150.6	-0.4	0.2	-0.5	0.3	-0.9
Inorganic chemicals.....	28	0.801	356.8	350.2	-5.4	-1.1	-2.8	-2.2	-1.8
Organic chemicals.....	29	2.627	136.8	135.8	-2.9	0.1	-1.8	-1.0	-0.7
Pharmaceutical products.....	30	3.424	126.4	125.3	6.6	0.7	0.7	2.4	-0.9
Fertilizers (Dec. 2009=100).....	31	0.404	128.1	123.6	-22.8	-0.8	1.6	-1.3	-3.5
Tanning extracts; dye, pigments, varnish, paints & putty (Dec. 2011=100).....	32	0.163	93.8	93.9	-11.6	0.1	-0.1	-0.1	0.1
Miscellaneous chemical products.....	38	0.482	102.1	102.4	-1.2	-0.1	0.2	-0.7	0.3
<b>Plastics and articles thereof; rubber and articles thereof.....</b>	VII	3.209	152.9	151.8	-1.1	0.3	-0.5	-0.3	-0.7
Plastics and articles thereof.....	39	1.966	148.7	147.0	1.8	0.7	-0.5	0.4	-1.1
Rubber and articles thereof.....	40	1.243	161.6	161.6	-5.5	-0.2	-0.4	-1.2	0.0
<b>Raw hides, skins, leather, furskins, travel goods, etc.....</b>	VIII	0.597	126.3	125.7	-0.4	0.0	-0.2	0.1	-0.5
Articles of leather; travel goods, bags, etc. of various materials.....	42	0.551	127.3	127.2	0.2	0.0	0.0	0.1	-0.1
<b>Wood, wood charcoal, cork, straw, basketware and wickerwork.....</b>	IX	0.695	162.7	158.4	14.2	1.2	1.2	2.8	-2.6
<b>Woodpulp, recovered paper, and paper products.....</b>	X	1.124	113.3	113.6	-0.4	0.5	-0.1	0.0	0.3
Pulp wood, waste paper, and paperboard (Dec. 2011=100).....	47	0.177	102.3	104.7	1.1	2.7	0.5	0.7	2.3
Paper and paperboard; articles of paper pulp, paper or paperboard.....	48	0.748	107.1	106.9	-1.6	0.1	-0.3	-0.2	-0.2
<b>Textile and textile articles.....</b>	XI	4.941	114.1	114.0	-1.3	0.2	0.0	-0.1	-0.1
Articles of apparel and clothing accessories, knitted or crocheted.....	61	1.944	104.0	103.5	-2.5	0.0	-0.3	0.0	-0.5

See footnotes at end of table.

**Table 5. U.S. import price indexes and percent changes for selected categories of goods: May 2012 to May 2013 — Continued**

[2000=100, unless otherwise noted]

Description	Harmonized system	Relative importance Apr. 2013 <sup>1</sup>	Index		Percent change				
			Apr. 2013	May 2013	Annual	Monthly			
					May 2012 to May 2013	Jan. 2013 to Feb. 2013	Feb. 2013 to Mar. 2013	Mar. 2013 to Apr. 2013	Apr. 2013 to May 2013
Articles of apparel and clothing accessories, not knitted or crocheted.....	62	1.814	117.1	117.4	-0.6	0.4	0.3	-0.1	0.3
Made-up or worn textile articles.....	63	0.547	108.2	108.3	-0.5	0.0	-0.5	0.4	0.1
<b>Headgear, umbrellas, artificial flowers, etc. . .</b>	XII	1.359	121.2	121.2	2.1	0.1	0.2	0.2	0.0
Footwear and parts of such articles.....	64	1.165	120.5	120.4	2.3	0.1	0.2	0.2	-0.1
<b>Stone, plaster, cement, asbestos, ceramics, glass etc.....</b>	XIII	0.763	131.9	131.9	0.0	-0.2	0.1	-0.2	0.0
Articles of stone, plaster, cement, asbestos, or mica (Dec. 2001=100).....	68	0.246	125.3	125.5	0.6	0.1	0.4	-0.1	0.2
Ceramic products.....	69	0.239	140.5	140.2	-1.3	0.0	-0.1	0.1	-0.2
Glass and glassware.....	70	0.278	128.0	127.9	0.5	-0.6	0.0	-0.3	-0.1
<b>Pearls, stones, precious metals, imitation jewelry, and coins.....</b>	XIV	3.266	198.6	190.8	-6.7	-0.6	-0.8	-1.3	-3.9
<b>Base metals and articles of base metals.....</b>	XV	5.003	183.4	181.6	-5.3	0.2	0.2	-1.3	-1.0
Iron and steel.....	72	1.148	219.0	216.7	-12.5	0.8	0.5	-0.6	-1.1
Articles of iron or steel.....	73	1.493	156.5	156.4	-3.3	-0.2	-0.1	-0.6	-0.1
Copper and articles thereof.....	74	0.470	342.0	332.0	-8.8	-0.9	-1.4	-4.0	-2.9
Nickel and articles thereof (Dec. 2009=100)...	75	0.147	100.1	95.7	-8.2	0.2	1.9	-4.2	-4.4
Aluminum and articles thereof.....	76	0.676	138.4	136.5	-2.9	0.1	0.4	-1.8	-1.4
Tools, implements, cutlery, spoons and forks, of base metal; parts thereof.....	82	0.384	129.3	129.3	0.7	-0.1	0.1	-0.3	0.0
Miscellaneous articles of base metal.....	83	0.432	136.6	136.5	1.0	0.1	0.0	0.1	-0.1
<b>Machinery, electrical equipment, TV image and sound recorders, parts, etc.....</b>	XVI	26.358	85.2	85.1	-0.8	-0.1	-0.2	-0.2	-0.1
Machinery and mechanical appliances; parts thereof.....	84	13.634	89.8	90.0	0.2	-0.1	-0.1	-0.2	0.2
Electrical machinery and equip, sound and TV recorders & reproducers, parts.....	85	12.724	80.8	80.5	-1.8	-0.2	-0.4	-0.2	-0.4
<b>Vehicles, aircraft, vessels and associated transport equipment.....</b>	XVII	10.678	116.4	116.3	0.4	0.0	0.0	-0.3	-0.1
Motor vehicles and their parts.....	87	9.745	115.2	115.1	0.2	0.0	-0.1	-0.3	-0.1
Aircraft, spacecraft, and parts thereof (Dec. 2002=100).....	88	0.865	119.9	119.8	1.5	0.1	0.4	0.0	-0.1
<b>Optical, photo, measuring, medical &amp; musical instruments; &amp; timepieces.....</b>	XVIII	3.330	103.9	103.9	-0.5	0.0	0.0	0.2	0.0
Optical, photographic, measuring and medical instruments.....	90	3.020	100.8	100.7	-1.2	0.0	0.1	0.3	-0.1
Clocks and watches and parts thereof.....	91	0.252	141.2	141.5	9.3	0.1	0.0	-0.7	0.2
<b>Miscellaneous manufactured articles.....</b>	XX	3.451	113.1	113.1	0.7	-0.1	0.2	0.0	0.0
Furniture & stuffed furnishings; lamps & lighting fittings, nesoi; prefab bldgs.....	94	1.930	117.1	117.2	1.0	-0.2	0.4	0.0	0.1
Toys, games and sports equipment; parts and accessories thereof.....	95	1.328	105.1	105.1	-0.2	-0.1	0.0	-0.1	0.0
Miscellaneous manufactured articles.....	96	0.193	138.4	138.3	3.9	-0.6	0.4	0.0	-0.1

<sup>1</sup> Relative importance figures are based on 2011 trade values.

NOTES: Data may be revised in each of the three months after original publication.

Dash = Not available

**Table 6. U.S. export price indexes and percent changes for selected categories of goods: May 2012 to May 2013**

[2000=100, unless otherwise noted]

Description	Harmoni- zied system	Relative importance Apr. 2013 <sup>1</sup>	Index		Percent change				
			Apr. 2013	May 2013	Annual	Monthly			
					May 2012 to May 2013	Jan. 2013 to Feb. 2013	Feb. 2013 to Mar. 2013	Mar. 2013 to Apr. 2013	Apr. 2013 to May 2013
<b>Live animals; animal products.....</b>	I	2.077	219.6	214.8	5.9	1.9	-1.8	0.7	-2.2
Meat & edible meat offal (Dec. 2006=100). . .	02	1.186	168.9	167.0	-0.5	1.1	0.1	-0.2	-1.1
Fish and crustaceans, molluscs and other aquatic invertebrates.....	03	0.403	202.7	188.9	-8.5	-0.7	0.6	-0.3	-6.8
<b>Vegetable products.....</b>	II	5.173	260.6	267.4	5.0	1.4	-1.8	-4.7	2.6
Edible fruit and nuts; peel of citrus fruit or melons.....	08	0.944	147.9	155.1	13.3	1.7	-4.8	-4.9	4.9
Cereals.....	10	2.020	297.4	305.5	8.9	4.1	-2.8	-5.1	2.7
Oilseeds and misc. grains, seeds, fruits, plants, straw and fodder.....	12	1.643	280.2	287.0	-1.1	3.1	-0.1	-5.4	2.4
<b>Animal or vegetable fats and oils (Dec. 2009=100).....</b>	III	0.311	136.4	135.9	-13.4	2.6	-0.8	1.0	-0.4
<b>Prepared foodstuffs, beverages, and tobacco.....</b>	IV	2.995	166.8	165.6	5.5	0.8	-0.7	-0.1	-0.7
Preparations of vegetables, fruit, nuts or other parts of plants (Dec. 2009=100).....	20	0.346	113.0	113.4	2.2	0.1	0.3	0.6	0.4
Beverages, spirits, and vinegar (Dec. 2008=100).....	22	0.633	113.3	113.3	3.1	1.2	-0.5	-0.1	0.0
Residues and waste from the food industries; prepared animal feed.....	23	0.775	267.3	256.3	10.5	0.3	-2.2	0.4	-4.1
<b>Mineral products.....</b>	V	9.149	299.1	292.0	-9.0	3.5	-0.3	-3.2	-2.4
Ores, slag and ash (Dec. 2012=100).....	26	0.464	95.4	91.7	-	1.9	-2.2	-2.4	-3.9
Mineral fuels, oils and residuals, bituminous substances and mineral waxes.....	27	8.504	296.0	289.0	-8.9	3.7	-0.1	-3.3	-2.4
<b>Products of the chemical or allied industries.....</b>	VI	11.470	154.2	154.4	-0.2	0.0	-0.5	-0.1	0.1
Inorganic chemicals.....	28	1.030	186.5	189.5	3.0	-0.2	0.2	0.9	1.6
Organic chemicals.....	29	3.259	166.7	164.7	-1.8	0.8	-0.4	-0.8	-1.2
Pharmaceutical products.....	30	2.663	122.4	122.8	-1.4	-0.9	-0.8	-1.0	0.3
Fertilizers (Dec. 2012=100).....	31	0.387	98.2	96.3	-	-2.5	1.7	1.1	-1.9
Essential oils and resinoids; perfumery cosmetic or toilet preparations.....	33	0.722	138.6	138.5	2.3	0.0	1.2	-0.1	-0.1
Soap; lubricants; waxes, polishing or scouring products; candles, pastes.....	34	0.447	119.7	119.4	-3.1	0.0	-1.6	0.3	-0.3
Miscellaneous chemical products.....	38	1.733	152.3	155.6	1.6	0.8	-1.5	-0.1	2.2
<b>Plastics and articles thereof; rubber and articles thereof.....</b>	VII	5.294	150.4	149.7	-2.1	0.9	0.1	0.1	-0.5
Plastics and articles thereof.....	39	4.262	143.2	142.3	-0.4	1.4	0.4	0.2	-0.6
Rubber and articles thereof.....	40	1.032	183.4	183.3	-8.8	-1.2	-1.2	-0.1	-0.1
<b>Raw hides, skins, leather, furskins, travel goods, etc.....</b>	VIII	0.403	146.0	146.4	9.4	1.3	1.0	1.1	0.3
<b>Wood, wood charcoal, cork, straw, basketware and wickerwork.....</b>	IX	0.583	113.6	114.2	4.5	0.5	1.4	1.2	0.5
<b>Woodpulp, recovered paper, and paper products.....</b>	X	2.233	120.4	120.3	2.0	0.0	0.5	-0.1	-0.1
Woodpulp and recovered paper.....	47	0.604	125.6	124.4	-1.3	-2.4	2.2	-0.5	-1.0
Paper and paperboard; articles of paper pulp, paper or paperboard.....	48	1.188	118.6	119.0	2.1	0.5	-0.3	0.1	0.3
Printed material.....	49	0.441	128.9	128.9	7.1	1.7	0.5	0.0	0.0
<b>Textile and textile articles.....</b>	XI	1.819	130.2	131.0	1.6	1.7	0.0	0.2	0.6
Cotton, including yarns and woven fabrics thereof.....	52	0.538	144.6	144.4	-2.8	7.1	-0.5	-0.3	-0.1
<b>Stone, plaster, cement, asbestos, ceramics, glass etc.....</b>	XIII	0.758	118.2	118.2	0.3	0.1	0.1	0.2	0.0

See footnotes at end of table.

**Table 6. U.S. export price indexes and percent changes for selected categories of goods: May 2012 to May 2013 — Continued**

[2000=100, unless otherwise noted]

Description	Harmonized system	Relative importance Apr. 2013 <sup>1</sup>	Index		Percent change				
			Apr. 2013	May 2013	Annual	Monthly			
					May 2012 to May 2013	Jan. 2013 to Feb. 2013	Feb. 2013 to Mar. 2013	Mar. 2013 to Apr. 2013	Apr. 2013 to May 2013
Glass and glassware.....	70	0.388	97.5	97.5	-1.1	0.0	0.2	0.1	0.0
<b>Pearls, stones, precious metals, imitation jewelry, and coins.....</b>	XIV	5.153	273.7	261.4	-7.2	-0.1	-1.9	-1.2	-4.5
<b>Base metals and articles of base metals.....</b>	XV	5.361	168.5	165.5	-7.6	1.1	-1.8	-0.6	-1.8
Iron and steel.....	72	1.510	192.4	186.5	-17.0	2.2	-3.9	-1.3	-3.1
Articles of iron or steel.....	73	1.329	170.5	169.5	-2.2	0.5	0.1	0.5	-0.6
Copper and articles thereof.....	74	0.620	245.4	231.6	-11.4	2.1	-3.6	-2.2	-5.6
Aluminum and articles thereof.....	76	0.847	124.0	123.0	-3.7	0.0	-1.5	-0.7	-0.8
Tools, implements, cutlery, spoons and forks, of base metal; parts thereof.....	82	0.403	132.4	132.4	2.5	0.0	-0.1	0.5	0.0
Miscellaneous articles of base metal.....	83	0.323	146.3	147.1	0.9	0.8	-0.3	0.0	0.5
<b>Machinery, electrical equipment, TV image and sound recorders, parts, etc.....</b>	XVI	27.873	97.2	97.1	-0.3	0.3	-0.1	-0.3	-0.1
Machinery and mechanical appliances; parts thereof.....	84	16.679	111.4	111.2	0.6	0.3	-0.1	0.0	-0.2
Electrical machinery and equipment and parts and accessories thereof.....	85	11.194	81.9	81.8	-1.6	0.2	-0.1	-0.6	-0.1
<b>Vehicles, aircraft, vessels and associated transport equipment.....</b>	XVII	11.972	128.0	128.0	0.9	0.2	0.1	0.1	0.0
Motor vehicles and their parts.....	87	8.118	113.9	113.8	0.6	0.3	0.0	0.2	-0.1
<b>Optical, photo, measuring, medical &amp; musical instruments; &amp; timepieces.....</b>	XVIII	5.884	107.2	107.0	0.8	0.0	-0.1	-0.1	-0.2
<b>Miscellaneous manufactured articles.....</b>	XX	1.340	110.9	110.7	0.4	-0.2	0.1	0.0	-0.2
Furniture; stuffed furnishings; lamps and lighting fittings nesoi;.....	94	0.722	121.3	121.1	1.1	-0.3	0.1	0.2	-0.2
Toys, games and sports equipment; parts and accessories thereof.....	95	0.511	90.9	90.6	-0.7	0.0	0.1	-0.1	-0.3

<sup>1</sup> Relative importance figures are based on 2011 trade values.

NOTES: Data may be revised in each of the three months after original publication.

Dash = Not available

**Table 7. U.S. import price indexes and percent changes by locality of origin: May 2012 to May 2013**  
 [2000=100, unless otherwise noted]

Description	Relative importance Apr. 2013 <sup>1</sup>	Index		Percent change				
		Apr. 2013	May 2013	Annual	Monthly			
				May 2012 to May 2013	Jan. 2013 to Feb. 2013	Feb. 2013 to Mar. 2013	Mar. 2013 to Apr. 2013	Apr. 2013 to May 2013
<b>Industrialized Countries<sup>2</sup></b> .....	100.000	132.5	131.9	0.2	0.6	0.1	0.0	-0.5
Nonmanufactured articles.....	11.872	234.2	233.5	10.1	2.5	1.5	5.3	-0.3
Manufactured articles.....	87.527	124.4	123.8	-1.0	0.3	0.0	-0.6	-0.5
<b>Other Countries<sup>3</sup></b> .....	100.000	139.1	138.6	-2.7	1.2	-0.1	-1.3	-0.4
Nonmanufactured articles.....	22.422	347.1	346.2	-6.0	4.3	-0.4	-4.7	-0.3
Manufactured articles.....	77.228	110.6	110.2	-1.5	0.4	-0.1	-0.2	-0.4
<b>Canada</b> .....	100.000	153.5	152.1	1.2	0.8	0.7	1.1	-0.9
Nonmanufactured articles.....	29.663	224.6	223.3	12.2	2.7	1.7	5.7	-0.6
Manufactured articles.....	69.279	138.8	137.4	-2.6	0.0	0.4	-0.7	-1.0
<b>European Union<sup>4</sup></b> .....	100.000	135.7	135.6	-0.3	0.7	-0.7	-0.1	-0.1
Nonmanufactured articles.....	1.050	364.8	364.0	-4.5	0.0	-2.0	-3.3	-0.2
Manufactured articles.....	98.440	132.0	131.9	-0.2	0.6	-0.7	-0.1	-0.1
<b>France (Dec. 2003=100)</b> .....	100.000	121.7	121.9	0.5	0.0	0.9	-0.3	0.2
<b>Germany (Dec. 2003=100)</b> .....	100.000	115.8	115.8	0.9	0.8	-0.3	-0.1	0.0
<b>United Kingdom (Dec. 2003=100)</b> .....	100.000	128.1	128.2	-5.0	0.1	-3.3	-0.7	0.1
<b>Latin America<sup>5</sup></b> .....	100.000	175.3	174.7	-3.5	2.4	-0.8	-1.9	-0.3
Nonmanufactured articles.....	32.254	376.0	375.5	-4.4	6.6	-1.7	-3.5	-0.1
Manufactured articles.....	67.331	131.9	131.4	-2.7	0.5	-0.3	-1.1	-0.4
<b>Mexico (Dec. 2003=100)</b> .....	100.000	144.4	144.5	-1.8	1.8	-0.2	-1.1	0.1
Nonmanufactured articles (Dec. 2008=100).....	19.201	203.7	204.5	-2.9	8.4	-0.6	-4.3	0.4
Manufactured articles (Dec. 2008=100) ...	80.471	94.1	94.1	-1.3	0.3	-0.1	-0.3	0.0
<b>Pacific Rim (Dec. 2003=100)<sup>6</sup></b> .....	100.000	103.8	103.7	-1.0	-0.1	-0.1	-0.1	-0.1
<b>China (Dec. 2003=100)</b> .....	100.000	104.1	103.9	-1.0	-0.1	-0.2	0.0	-0.2
<b>Japan</b> .....	100.000	101.5	101.1	-1.4	-0.5	-0.2	-0.6	-0.4
<b>Asian NICs<sup>7</sup></b> .....	100.000	90.9	91.2	0.7	0.1	0.1	1.0	0.3
<b>ASEAN (Dec. 2003=100)<sup>8</sup></b> .....	100.000	104.7	104.9	-0.9	0.0	-0.4	0.8	0.2
<b>Asia Near East (Dec. 2003=100)<sup>9</sup></b> .....	100.000	269.3	267.0	-9.0	1.8	0.7	-3.3	-0.9

1 Relative figures are based on 2011 trade values.

2 Western Europe, Canada, Japan, Australia, New Zealand and South Africa.

3 Eastern Europe, Latin America, OPEC countries, and other countries in Asia, Africa and the Western Hemisphere.

4 European Union countries.

5 Mexico, Central America, South America and the Caribbean.

6 China, Japan, Australia, Brunei, Indonesia, Macao, Malaysia, New Zealand, Papua New Guinea, Philippines and the Asian Newly Industrialized Countries.

7 Asian Newly Industrialized Countries - Hong Kong, Singapore, South Korea and Taiwan.

8 Association of Southeast Asian Nations - Brunei, Cambodia, Indonesia, Laos, Malaysia, Myanmar, Philippines, Singapore, Thailand and Vietnam.

9 Bahrain, Iran, Iraq, Israel, Jordan, Kuwait, Lebanon, Oman, Qatar, Saudi Arabia, Syria, United Arab Emirates and Yemen.

NOTES: Data may be revised in each of the three months after original publication.

Regions are not mutually exclusive.

Dash = Not available

**Table 8. U.S. international price indexes and percent changes for selected transportation services: May 2012 to May 2013**

[2000=100, unless otherwise noted]

Description	Relative importance Apr. 2013 <sup>1</sup>	Index		Percent change				
		Apr. 2013	May 2013	Annual	Monthly			
				May 2012 to May 2013	Jan. 2013 to Feb. 2013	Feb. 2013 to Mar. 2013	Mar. 2013 to Apr. 2013	Apr. 2013 to May 2013
<b>Air Freight</b>								
<b>Import Air Freight</b> .....	100.000	173.0	172.4	-2.9	-0.4	-0.6	-0.8	-0.3
Europe (Dec. 2003=100).....	21.915	164.7	165.1	-0.2	1.4	0.3	-2.0	0.2
Asia.....	73.727	152.6	151.8	-3.8	-1.0	-1.0	-0.5	-0.5
<b>Export Air Freight</b> .....	100.000	149.4	147.7	-2.0	-0.3	0.1	0.3	-1.1
Europe (Dec. 2006=100).....	35.833	134.1	132.8	-2.4	0.0	0.3	0.5	-1.0
<b>Inbound Air Freight</b> .....	100.000	163.1	162.1	0.3	-0.7	-0.5	-0.4	-0.6
Europe (Dec. 2003=100).....	21.985	149.5	149.2	-0.7	0.5	-0.5	-1.3	-0.2
Asia.....	67.423	148.1	146.8	1.1	-1.2	-0.6	-0.1	-0.9
<b>Outbound Air Freight</b> .....	100.000	148.7	147.4	-1.9	0.1	0.4	0.1	-0.9
Europe (Dec. 2003=100).....	27.615	161.3	161.0	-3.5	0.0	-0.3	0.1	-0.2
Asia.....	52.733	143.0	141.0	-1.7	0.1	1.1	0.1	-1.4
<b>Air Passenger Fares</b>								
<b>Import Air Passenger Fares</b> .....	100.000	182.2	185.8	2.6	-1.2	-1.6	0.3	2.0
Europe.....	44.121	209.2	208.3	12.4	2.4	-4.4	1.4	-0.4
Asia.....	25.781	150.4	155.2	-1.6	-6.4	-0.3	1.9	3.2
Latin America/Caribbean.....	9.543	167.9	165.0	-3.5	0.1	2.6	0.0	-1.7
<b>Export Air Passenger Fares</b> .....	100.000	180.7	191.3	-3.7	-8.2	0.9	-2.6	5.9
Europe.....	28.019	212.8	222.4	-0.4	0.8	1.5	-4.1	4.5
Asia.....	27.667	151.2	165.0	-8.0	-18.0	-1.4	-5.7	9.1
Latin America/Caribbean.....	22.485	193.3	191.2	-16.8	-8.6	2.8	-3.2	-1.1

<sup>1</sup> Relative importance figures are based on 2011 trade values.

NOTES: Data may be revised in each of the three months after original publication.

Dash = Not available

## TECHNICAL NOTE

**Import and Export Merchandise and Services Price Indexes** -- All indexes use a modified Laspeyres formula and are not seasonally adjusted. Price indexes are reweighted annually, with a two-year lag in the weights. Published series use a base year of 2000=100 where possible. More detailed index series and additional information may be obtained at <http://www.bls.gov/mxp>, or by calling (202) 691-7101.

**Merchandise Goods Classification Systems** -- The merchandise price indexes are published using three classification systems. Items are classified by end use according to the Bureau of Economic Analysis Classification System, by industry according to the North American Industry Classification System (NAICS), and by product category according to the Harmonized System (HS). While classification by end use and product category are self-explanatory, some notes are in order for classifying items by industry. In the NAICS imports and exports tables, items are classified by output industry, not input industry. As an example, NAICS import index 326 (plastics and rubber products manufacturing) include outputs such as manufactured plastic rather than inputs such as petroleum. The NAICS classification structure also matches the classification system used by the PPI (Producer Price Index) to produce the NAICS primary products indexes.

**Import Price Indexes** -- Products have been classified by the Harmonized Tariff Schedule of the United States Annotated (TSUSA). Import prices are based on U.S. dollar prices paid by the U.S. importer. The prices are generally either "free on board" (f.o.b.) foreign port or "cost, insurance, and freight" (c.i.f.) U.S. port transaction prices, depending on the practices of the individual industry. The index for crude petroleum is calculated from data collected by the U.S. Department of Energy.

**Export Price Indexes** -- Products have been classified by the Harmonized Schedule B classification system of the U.S. Bureau of the Census. The prices used are generally either "free alongside ship" (f.a.s.) factory or "free on board" (f.o.b.) transaction prices, depending on the practices of the individual industry. Prices used in the grain index, excluding rice, are obtained from the U.S. Department of Agriculture.

**Services Price Indexes** -- Starting in September 2008 the Import Air Passenger Fares Indexes represent changes in the average revenue per passenger received by foreign carriers from U.S. residents and are calculated from data obtained from an airline consulting service. These data include tickets sold by travel agencies and travel websites. Tickets sold directly by the airlines are excluded, as are frequent flyer tickets generally. Starting in January 2008 the Export Air Passenger Fares Indexes represent changes in the average revenue per passenger received by U.S. carriers from foreign residents and are calculated from data collected directly from airlines. These data include frequent flyer tickets and those sold by consolidators. Taxes and fees are included in the Import Air Passenger Fares Index and excluded from the Export Air Passenger Fares Index. The Air Freight Indexes are calculated from data collected directly from airlines. These data exclude mail and passenger baggage. The scope of the service being priced is the movement of freight from airport to airport only, and does not include any ground transportation or port service. The Air Freight Indexes are presented using two definitions: Balance of Payments (which represent transactions between U.S. and foreign residents) and International (which represent transactions inbound to and outbound from the U.S.). Fact sheets specifying detailed information for each services industry are available at <http://www.bls.gov/mxp> under "MXP Publications."

**Import Indexes by Locality of Origin** -- Prices used in these indexes are a subset of the data collected for the Import Price Indexes. Beginning with January 2002, the indexes are defined by locality of origin using a nomenclature based upon the North American Industry Classification System (NAICS). Nonmanufactured goods are defined as NAICS 11 and 21 and manufactured goods are defined as NAICS 31-33.

**Revision Policy** -- To reflect the availability of late reports and corrections by respondents, monthly data may be revised in each of the three months after original publication. After three months, no further data revisions take place. So, for example, data released in the January release will be subject to revision in the releases for February, March, and April.

**Uses of the Data** -- The primary use of the indexes is to deflate trade statistics, notably the foreign trade sector of the National Income and Product Accounts constructed by the Department of Commerce. Other published indexes are useful for general market analysis. For trade in international services, Balance of Payments indexes are used for deflating National Income and Product Accounts, while International indexes are more appropriate for market analysis. Merchandise and services indexes also can be used to study U.S. competitiveness and to compute price elasticities, and the merchandise import indexes by country or region of origin are useful in terms of trade analysis.

**E-Mail Subscription** -- The U.S. Import and Export Price Indexes news release is available through an e-mail subscription service at (<http://www.bls.gov/bls/list.htm>).

**Additional Information** -- More detailed data are available on the Import/Export Price Indexes home page at (<http://www.bls.gov/mxp>). Flat Files and the FTP server are available for users requiring access to either a large volume of time series data or other related documentation. The FTP site can be accessed at <ftp://ftp.bls.gov>. For technical assistance in using the BLS Internet site, send e-mail to ([labstat.helpdesk@bls.gov](mailto:labstat.helpdesk@bls.gov)). For Import/Export Price Index data requests, send e-mail to ([mxpinfo@bls.gov](mailto:mxpinfo@bls.gov)).

Information from this release will be made available to sensory impaired individuals upon request. Voice phone: 202-691-5200; Federal Relay Service: 1-800-877-8339.