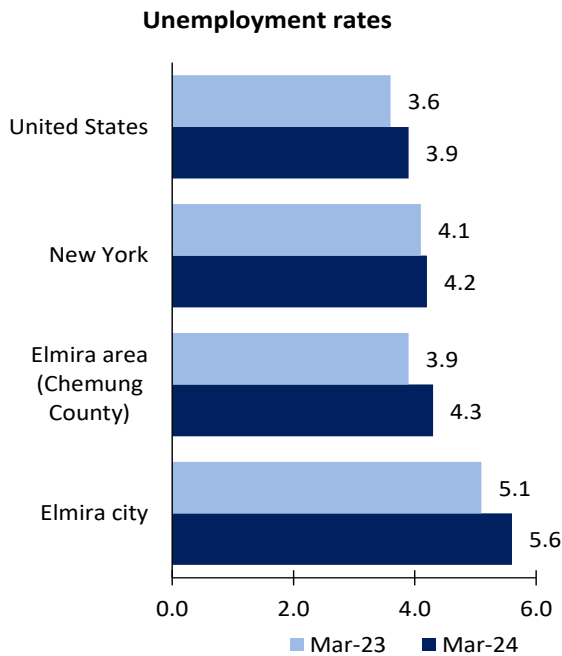


Elmira Area Economic Summary

Updated May 06, 2024

This summary presents a sampling of economic information for the area; supplemental data are provided for regions and the nation. Subjects include **unemployment, employment, wages, prices, spending, and benefits**. All data are not seasonally adjusted and some may be subject to revision. Area definitions may differ by subject. For more area summaries and geographic definitions, see www.bls.gov/regions/economic-summaries.htm.

Unemployment rates for the nation and selected areas

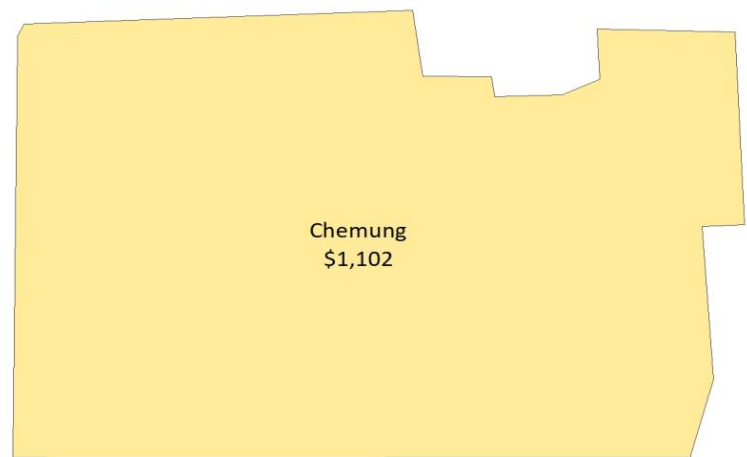


Source: U.S. BLS, Local Area Unemployment Statistics.

Average weekly wages for all industries by county

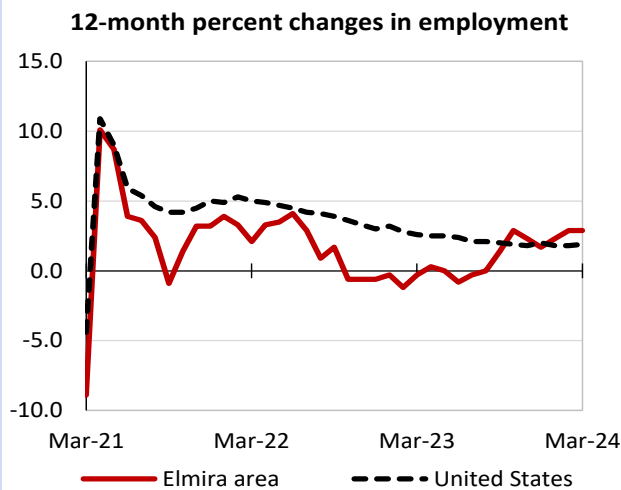
Elmira area, third quarter 2023

(U.S. = \$1,334; Area = \$1,102)



Source: U.S. BLS, Quarterly Census of Employment and Wages.

Over-the-year changes in employment on nonfarm payrolls and employment by major industry sector



Source: U.S. BLS, Current Employment Statistics.

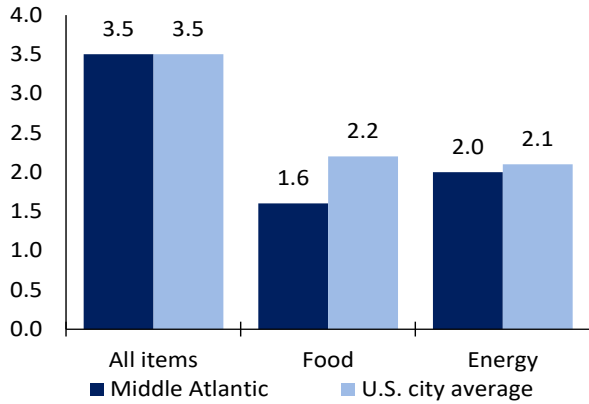
| Elmira area employment (number in thousands) | Mar. 2024 | Change from Mar. 2023 to Mar. 2024 | |
|--|-----------|------------------------------------|---------|
| | | Number | Percent |
| Total nonfarm | 35.4 | 1.0 | 2.9 |
| Mining, logging, and construction | 1.4 | 0.2 | 16.7 |
| Manufacturing | 4.9 | -0.1 | -2.0 |
| Trade, transportation, and utilities | 7.4 | -0.2 | -2.6 |
| Information | 0.4 | 0.0 | 0.0 |
| Financial activities | 1.0 | 0.0 | 0.0 |
| Professional and business services | 2.1 | 0.1 | 5.0 |
| Education and health services | 6.8 | 0.4 | 6.3 |
| Leisure and hospitality | 3.6 | 0.4 | 12.5 |
| Other services | 1.4 | 0.0 | 0.0 |
| Government | 6.4 | 0.2 | 3.2 |

Source: U.S. BLS, Current Employment Statistics.



Over-the-year change in the prices paid by urban consumers for selected categories

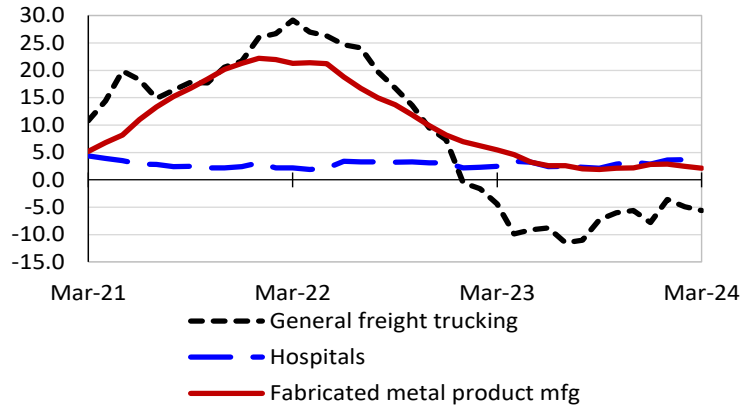
12-month percent change in CPI-U, March 2024



Source: U.S. BLS, Consumer Price Index.

Over-the-year changes in the selling prices received by producers for selected industries nationwide

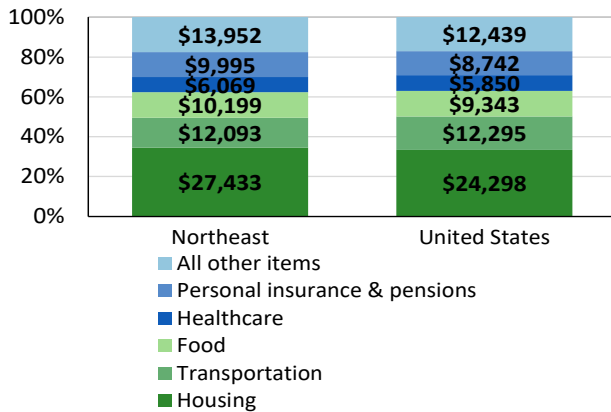
12-month percent changes in PPI



Source: U.S. BLS, Producer Price Index.

Average annual spending and percent distribution for selected categories

Average annual expenditures, United States and Northeast, 2022



Source: U.S. BLS, Consumer Expenditure Survey.

Average hourly wages for selected occupations

| Occupation | Elmira area | United States |
|-------------------------------|-------------|---------------|
| All occupations | \$27.59 | \$31.48 |
| Industrial engineers | 40.68 | 49.59 |
| Registered nurses | 36.93 | 45.42 |
| Machinists | 25.46 | 26.25 |
| Stockers and order fillers | 19.07 | 18.27 |
| Retail salespersons | 18.18 | 17.64 |
| Fast food and counter workers | 15.65 | 14.48 |

Source: U.S. BLS, Occupational Employment and Wage Statistics, May 2023.

Employer costs per hour worked for wages and selected employee benefits by geographic division

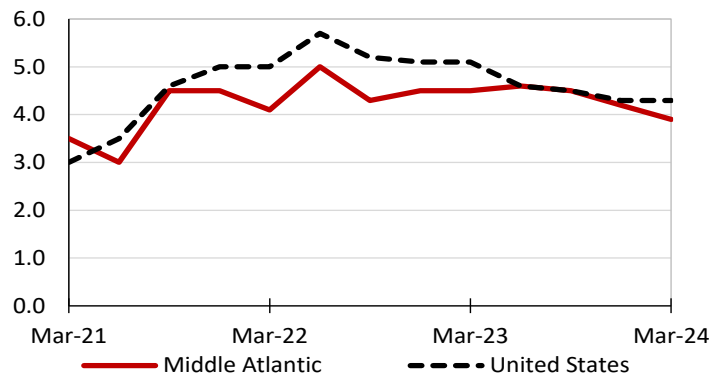
| Private industry, December 2023 | Middle Atlantic | United States |
|---------------------------------|-----------------|---------------|
| Total compensation | \$52.53 | \$43.11 |
| Wages and salaries | 36.44 | 30.33 |
| Total benefits | 16.09 | 12.77 |
| Paid leave | 4.34 | 3.26 |
| Vacation | 2.19 | 1.67 |
| Supplemental pay | 1.79 | 1.71 |
| Insurance | 3.94 | 3.14 |
| Retirement and savings | 2.16 | 1.50 |
| Legally required benefits | 3.86 | 3.17 |

(1) The states that compose the Middle Atlantic census division are: NJ, NY, and PA.

Source: U.S. BLS, Employer Costs for Employee Compensation.

Over-the-year changes in wages and salaries

12-month percent changes in ECI



Source: U.S. BLS, Employment Cost Index.

