

# News

United States  
Department  
of Labor



Bureau of Labor Statistics

Washington, D.C. 2012

## Technical information:

Household data: (202) 691-6378  
<http://www.bls.gov/cps/>

USDL 09-0004

Establishment data: (202) 691-6555  
<http://www.bls.gov/ces/>

Transmission of material in this release  
is embargoed until 8:30 A.M. (EST),  
Friday, January 9, 2009.

Media contact: (202) 691-5902

## THE EMPLOYMENT SITUATION: DECEMBER 2008

Nonfarm payroll employment declined sharply in December, and the unemployment rate rose from 6.8 to 7.2 percent, the Bureau of Labor Statistics of the U.S. Department of Labor reported today. Payroll employment fell by 524,000 over the month and by 1.9 million over the last 4 months of 2008. In December, job losses were large and widespread across most major industry sectors.

Chart 1. Unemployment rate, seasonally adjusted,  
January 2006 – December 2008

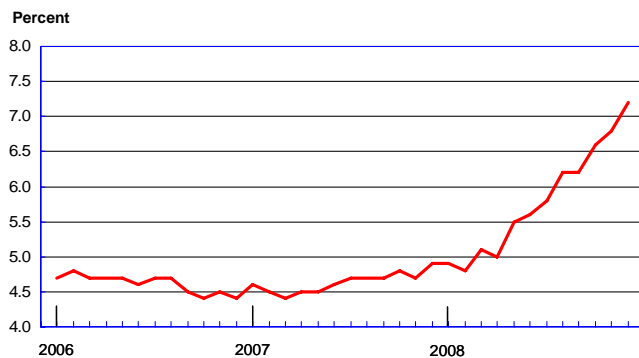
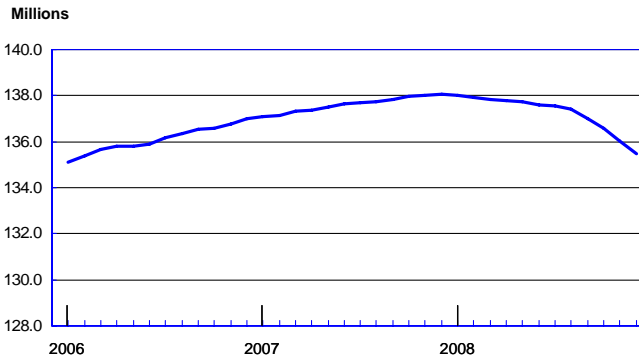


Chart 2. Nonfarm payroll employment, seasonally adjusted,  
January 2006 – December 2008



### Unemployment (Household Survey Data)

In December, the number of unemployed persons increased by 632,000 to 11.1 million and the unemployment rate rose to 7.2 percent. Since the start of the recession in December 2007, the number of

#### **Revision of Seasonally Adjusted Household Survey Data**

Seasonally adjusted household survey data have been revised using updated seasonal adjustment factors, a procedure done at the end of each calendar year. Seasonally adjusted estimates back to January 2004 were subject to revision. The unemployment rates for January-November 2008 (as originally published and as revised) appear on page 5, along with additional information about the revisions.

**Table A. Major indicators of labor market activity, seasonally adjusted**

(Numbers in thousands)

Category	Quarterly averages		Monthly data			Nov.-Dec. change
	III 2008	IV 2008	Oct. 2008	Nov. 2008	Dec. 2008	
<b>HOUSEHOLD DATA</b>	<b>Labor force status</b>					
Civilian labor force .....	154,650	154,648	154,878	154,620	154,447	-173
Employment .....	145,299	144,046	144,657	144,144	143,338	-806
Unemployment .....	9,350	10,602	10,221	10,476	11,108	632
Not in labor force .....	79,460	80,177	79,734	80,208	80,588	380
	<b>Unemployment rates</b>					
All workers .....	6.0	6.9	6.6	6.8	7.2	0.4
Adult men .....	5.8	6.8	6.4	6.7	7.2	.5
Adult women .....	5.0	5.6	5.4	5.6	5.9	.3
Teenagers .....	19.7	20.7	20.7	20.4	20.8	.4
White .....	5.4	6.3	6.0	6.2	6.6	.4
Black or African American .....	10.7	11.5	11.3	11.3	11.9	.6
Hispanic or Latino ethnicity .....	7.8	8.9	8.8	8.6	9.2	.6
<b>ESTABLISHMENT DATA</b>	<b>Employment</b>					
Nonfarm employment .....	137,331	p 136,033	136,597	p 136,013	p 135,489	p -524
Goods-producing <sup>1</sup> .....	21,351	p 20,844	21,049	p 20,867	p 20,616	p -251
Construction .....	7,141	p 6,929	7,019	p 6,934	p 6,833	p -101
Manufacturing .....	13,423	p 13,115	13,234	p 13,130	p 12,981	p -149
Service-providing <sup>1</sup> .....	115,980	p 115,189	115,548	p 115,146	p 114,873	p -273
Retail trade <sup>2</sup> .....	15,259	p 15,043	15,132	p 15,032	p 14,966	p -67
Professional and business service .....	17,849	p 17,574	17,708	p 17,563	p 17,450	p -113
Education and health services .....	18,975	p 19,058	19,012	p 19,059	p 19,104	p 45
Leisure and hospitality .....	13,627	p 13,505	13,557	p 13,490	p 13,468	p -22
Government .....	22,504	p 22,510	22,510	p 22,507	p 22,514	p 7
	<b>Hours of work <sup>3</sup></b>					
Total private .....	33.7	p 33.4	33.5	p 33.5	p 33.3	p -0.2
Manufacturing .....	40.8	p 40.2	40.4	p 40.3	p 39.9	p -4
Overtime .....	3.7	p 3.3	3.5	p 3.3	p 3.0	p -3
	<b>Indexes of aggregate weekly hours (2002=100) <sup>3</sup></b>					
Total private .....	106.6	p 104.5	105.3	p 104.7	p 103.5	p -1.2
	<b>Earnings <sup>3</sup></b>					
Average hourly earnings, total private .....	\$18.12	p \$18.30	\$18.23	p \$18.31	p \$18.36	p \$0.05
Average weekly earnings, total private .....	610.15	p 611.83	610.71	p 613.39	p 611.39	p -2.00

<sup>1</sup> Includes other industries, not shown separately.<sup>2</sup> Quarterly averages and the over-the-month change are calculated using unrounded data.<sup>3</sup> Data relate to private production and nonsupervisory workers.

p = preliminary.

NOTE: Seasonally adjusted household data have been revised. See note on page 5.

unemployed persons has grown by 3.6 million, and the unemployment rate has risen by 2.3 percentage points. (See table A-1.)

The unemployment rates for adult men (7.2 percent), adult women (5.9 percent), and whites (6.6 percent) increased in December. The jobless rates for teenagers (20.8 percent), blacks (11.9 percent), and Hispanics (9.2 percent) were little changed over the month. The unemployment rate for Asians was 5.1 percent in December, not seasonally adjusted. (See tables A-1, A-2, and A-3.)

Among the unemployed, the number of job losers and persons who completed temporary jobs rose by 315,000 to 6.5 million in December. Over the past 12 months, the size of this group has increased by 2.7 million. (See table A-8.) The number of long-term unemployed (those jobless for 27 weeks or more) rose to 2.6 million in December and was up by 1.3 million in 2008. (See table A-9.)

#### Total Employment and the Labor Force (Household Survey Data)

The civilian labor force (154.4 million) and the labor force participation rate (65.7 percent) were little changed in December. The employment-population ratio fell by 0.4 percentage point to 61.0 percent over the month and by 1.7 percentage points in 2008. (See table A-1.)

In December, the number of persons who worked part time for economic reasons (sometimes referred to as involuntary part-time workers) continued to increase, reaching 8.0 million. The number of such workers rose by 3.4 million over the past 12 months. This category includes persons who would like to work full time but were working part time because their hours had been cut back or because they were unable to find full-time jobs. (See table A-5.)

#### Persons Not in the Labor Force (Household Survey Data)

About 1.9 million persons (not seasonally adjusted) were marginally attached to the labor force in December, 564,000 more than 12 months earlier. These individuals wanted and were available for work and had looked for a job sometime in the prior 12 months. They were not counted as unemployed because they had not searched for work in the 4 weeks preceding the survey. Among the marginally attached, there were 642,000 discouraged workers in December, up by 279,000 from a year earlier. Discouraged workers are persons not currently looking for work specifically because they believe no jobs are available for them. The other 1.3 million persons marginally attached to the labor force in December had not searched for work in the 4 weeks preceding the survey for reasons such as school attendance or family responsibilities. (See table A-13.)

#### Industry Payroll Employment (Establishment Survey Data)

Total nonfarm payroll employment declined sharply (-524,000) in December. Over the past 4 months, payroll employment has fallen by 1.9 million, or 1.4 percent. In December, large job losses continued in manufacturing, construction, and employment services, while health care continued to add jobs. (See table B-1.)

Manufacturing employment fell by 149,000 in December, the largest over-the-month decline since August 2001. Factory job losses totaled 791,000 in 2008, with nearly half of the decrease occurring in the fourth quarter. In December, declines were widespread among the component industries. The largest job losses occurred in fabricated metal products (-28,000) and motor vehicles and parts (-21,000).

Employment in construction continued to decline (-101,000) in December and has fallen by 899,000 since peaking in September 2006. Over the month, job losses occurred throughout the industry.

Within professional and business services, the temporary help industry lost 81,000 jobs in December, bringing job losses in 2008 to 490,000. In December, employment also fell in the management of companies and enterprises (-8,000) and in architectural and engineering services (-7,000).

Employment in retail trade declined by 67,000 in December and by 522,000 for all of 2008. More than half of the losses in 2008 occurred in the last 4 months of the year. In December, employment decreased in automobile dealerships (-22,000), furniture and home furnishing stores (-8,000), and electronics and appliance stores (-5,000). Wholesale trade employment fell by 30,000 over the month and by 164,000 in 2008.

Elsewhere in the service-providing sector, employment in transportation and warehousing declined by 24,000 in December, with losses in truck transportation (-16,000) and air transportation (-4,000). The information industry lost 20,000 jobs over the month. Food services employment continued to trend downward (-20,000) and has decreased by 104,000 since its recent peak in June 2008. Employment in financial activities edged down in December and fell by 148,000 in 2008.

Health care employment continued to grow in December (32,000), with over-the-month job gains in ambulatory services (14,000) and hospitals (12,000). In 2008, health care added 372,000 jobs.

The change in total nonfarm employment for October was revised from -320,000 to -423,000, and the change for November was revised from -533,000 to -584,000. Monthly revisions result from additional sample reports and the monthly recalculation of seasonal factors.

#### Weekly Hours (Establishment Survey Data)

In December, the average workweek for production and nonsupervisory workers on private nonfarm payrolls fell by 0.2 hour to 33.3 hours, seasonally adjusted—the lowest level on record for the series, which began in 1964. The manufacturing workweek, at 39.9 hours, declined by 0.4 hour over the month, and factory overtime, at 3.0 hours, declined by 0.3 hour. (See table B-2.)

The index of aggregate weekly hours of production and nonsupervisory workers on private nonfarm payrolls fell by 1.1 percent in December and 4.0 percent since peaking in December 2007. The manufacturing index declined by 2.4 percent over the month. (See table B-5.)

#### Hourly and Weekly Earnings (Establishment Survey Data)

In December, average hourly earnings of production and nonsupervisory workers on private nonfarm payrolls rose by 5 cents, or 0.3 percent, seasonally adjusted. This followed gains of 8 cents in

November and 6 cents in October. For all of 2008, average hourly earnings increased by 3.7 percent and average weekly earnings rose by 2.2 percent. (See table B-3.)

The Employment Situation for January 2009 is scheduled to be released on Friday, February 6, at 8:30 A.M. (EST).

### **Revision of Seasonally Adjusted Household Survey Data**

At the end of each calendar year, BLS routinely updates the seasonal adjustment factors for the labor force series derived from the Current Population Survey (CPS), or household survey. As a result of this process, seasonally adjusted data for January 2004–November 2008 were subject to revision.

Table B shows the unemployment rates for January to November 2008, as first published and as revised. The rates were unchanged in 5 of the 11 months and changed by one-tenth of a percentage point in the remaining 6 months. Revised seasonally adjusted data for other major labor force series beginning in December 2007 appear in table C.

An article describing the seasonal adjustment methodology for the household survey data and revised data for January 2008–November 2008 is available at <http://www.bls.gov/cps/cpsrs2009.pdf>.

Historical data for the household series contained in the A tables of this release can be accessed at <http://www.bls.gov/cps/cpsatabs.htm>. Revised historical seasonally adjusted monthly and quarterly data for additional series are available on the Internet at <ftp://ftp.bls.gov/pub/special.requests/lf/>.

**Table B. Seasonally adjusted unemployment rates and changes due to revision, January–November 2008**

Year and month	As first published	As revised	Change
<b>2008</b>			
January .....	4.9	4.9	0.0
February .....	4.8	4.8	.0
March .....	5.1	5.1	.0
April .....	5.0	5.0	.0
May .....	5.5	5.5	.0
June .....	5.5	5.6	.1
July .....	5.7	5.8	.1
August .....	6.1	6.2	.1
September .....	6.1	6.2	.1
October .....	6.5	6.6	.1
November .....	6.7	6.8	.1

## HOUSEHOLD DATA

## HOUSEHOLD DATA

Table C. Employment status of the civilian population by sex and age, seasonally adjusted

Employment status, sex, and age	2007	2008											
	Dec.	Jan.	Feb.	Mar.	Apr.	May	June	July	Aug.	Sept.	Oct.	Nov.	Dec.
<b>TOTAL</b>													
Civilian noninstitutional population <sup>1</sup> .....	233,156	232,616	232,809	232,995	233,198	233,405	233,627	233,864	234,107	234,360	234,612	234,828	235,035
Civilian labor force .....	153,836	153,873	153,498	153,843	153,932	154,510	154,400	154,506	154,823	154,621	154,878	154,620	154,447
Participation rate .....	66.0	66.1	65.9	66.0	66.0	66.2	66.1	66.1	66.1	66.0	66.0	65.8	65.7
Employed .....	146,294	146,317	146,075	146,023	146,257	145,974	145,738	145,596	145,273	145,029	144,657	144,144	143,338
Employment-population ratio .....	62.7	62.9	62.7	62.7	62.7	62.5	62.4	62.3	62.1	61.9	61.7	61.4	61.0
Unemployed .....	7,541	7,555	7,423	7,820	7,675	8,536	8,662	8,910	9,550	9,592	10,221	10,476	11,108
Unemployment rate .....	4.9	4.9	4.8	5.1	5.0	5.5	5.6	5.8	6.2	6.2	6.6	6.8	7.2
<b>Men, 20 years and over</b>													
Civilian noninstitutional population <sup>1</sup> .....	104,197	103,866	103,961	104,052	104,152	104,258	104,371	104,490	104,613	104,741	104,869	104,978	105,083
Civilian labor force .....	78,943	78,907	78,806	78,866	78,820	78,913	79,055	79,286	79,308	79,392	79,380	79,335	78,998
Participation rate .....	75.8	76.0	75.8	75.8	75.7	75.7	75.7	75.9	75.8	75.8	75.7	75.6	75.2
Employed .....	75,496	75,474	75,395	75,216	75,147	74,992	74,949	74,973	74,737	74,503	74,292	74,045	73,285
Employment-population ratio .....	72.5	72.7	72.5	72.3	72.2	71.9	71.8	71.8	71.4	71.1	70.8	70.5	69.7
Unemployed .....	3,446	3,433	3,412	3,650	3,673	3,921	4,106	4,313	4,572	4,889	5,088	5,290	5,714
Unemployment rate .....	4.4	4.4	4.3	4.6	4.7	5.0	5.2	5.4	5.8	6.2	6.4	6.7	7.2
<b>Women, 20 years and over</b>													
Civilian noninstitutional population <sup>1</sup> .....	111,903	111,739	111,822	111,902	111,990	112,083	112,183	112,290	112,401	112,518	112,633	112,731	112,825
Civilian labor force .....	67,888	67,982	67,879	68,174	68,118	68,367	68,421	68,273	68,666	68,385	68,700	68,753	68,891
Participation rate .....	60.7	60.8	60.7	60.9	60.8	61.0	61.0	60.8	61.1	60.8	61.0	61.0	61.1
Employed .....	64,976	65,101	64,993	65,079	65,196	65,114	65,169	65,103	65,003	65,008	64,975	64,902	64,860
Employment-population ratio .....	58.1	58.3	58.1	58.2	58.2	58.1	58.1	58.0	57.8	57.8	57.7	57.6	57.5
Unemployed .....	2,912	2,881	2,886	3,095	2,923	3,252	3,252	3,170	3,662	3,377	3,725	3,851	4,031
Unemployment rate .....	4.3	4.2	4.3	4.5	4.3	4.8	4.8	4.6	5.3	4.9	5.4	5.6	5.9
<b>Both sexes, 16 to 19 years</b>													
Civilian noninstitutional population <sup>1</sup> .....	17,056	17,012	17,027	17,041	17,056	17,064	17,073	17,084	17,092	17,101	17,110	17,118	17,126
Civilian labor force .....	7,005	6,984	6,813	6,803	6,993	7,231	6,924	6,947	6,849	6,844	6,799	6,531	6,557
Participation rate .....	41.1	41.1	40.0	39.9	41.0	42.4	40.6	40.7	40.1	40.0	39.7	38.2	38.3
Employed .....	5,822	5,742	5,688	5,729	5,914	5,868	5,620	5,520	5,533	5,518	5,390	5,196	5,194
Employment-population ratio .....	34.1	33.8	33.4	33.6	34.7	34.4	32.9	32.3	32.4	32.3	31.5	30.4	30.3
Unemployed .....	1,183	1,241	1,125	1,075	1,079	1,363	1,304	1,427	1,316	1,326	1,408	1,335	1,363
Unemployment rate .....	16.9	17.8	16.5	15.8	15.4	18.9	18.8	20.5	19.2	19.4	20.7	20.4	20.8

<sup>1</sup> The population figures are not adjusted for seasonal variation.

NOTE: Seasonally adjusted data have been revised to reflect updated seasonal adjustment factors.

### **Changes to Household Data Table A-13**

Effective with this release, the wording was changed in one of the categories in table A-13. "Searched for work and available to work now," was changed to "Marginally attached to the labor force." This is strictly a change in title, and not in definition; the data shown are not affected. This change is being made to correspond with the text in the release.

### **Revisions in the Establishment Survey Data**

With the release of January 2009 data on February 6, 2009, the Current Employment Statistics survey will introduce revisions to the nonfarm payroll employment, hours, and earnings data to reflect the annual benchmark adjustments for March 2008 and updated seasonal adjustment factors. Not seasonally adjusted data beginning with April 2007 and seasonally adjusted data beginning with January 2004 are subject to revision.

### **Planned Changes in the Household Survey**

Effective with the release of data for January 2009, revisions will be introduced into the population controls for the household survey. These changes reflect the routine annual updating of intercensal population estimates by the U.S. Census Bureau.

In addition, the Current Population Survey (household data) will change its industry classification from the 2002 Census Industry Classification to an updated version derived from the 2007 North American Industry Classification System. Several industry titles will be updated. In addition, the new classification reflects minor definitional changes within the information sector. Historical data will not be revised.

## **Frequently Asked Questions about Employment and Unemployment Estimates**

### **Why are there two monthly measures of employment?**

The household survey and establishment survey both produce sample-based estimates of employment and both have strengths and limitations. The establishment survey employment series has a smaller margin of error on the measurement of month-to-month change than the household survey because of its much larger sample size. An over-the-month employment change of 104,000 is statistically significant in the establishment survey, while the threshold for a statistically significant change in the household survey is about 400,000. However, the household survey has a more expansive scope than the establishment survey because it includes the self-employed, unpaid family workers, agricultural workers, and private household workers, who are excluded by the establishment survey. The household survey also provides estimates of employment for demographic groups.

### **Are undocumented immigrants counted in the surveys?**

Neither the establishment nor household survey is designed to identify the legal status of workers. Thus, while it is likely that both surveys include at least some undocumented immigrants, it is not possible to determine how many are counted in either survey. The household survey does include questions about whether respondents were born outside the United States. Data from these questions show that foreign-born workers accounted for 15.7 percent of the labor force in 2007 and 47.7 percent of the net increase in the labor force from 2000 to 2007.

### **Why does the establishment survey have revisions?**

The establishment survey revises published estimates to improve its data series by incorporating additional information that was not available at the time of the initial publication of the estimates. The establishment survey revises its initial monthly estimates twice, in the immediately succeeding 2 months, to incorporate additional sample receipts from respondents in the survey and recalculated seasonal adjustment factors. For more information on the monthly revisions, please visit <http://www.bls.gov/ces/cesreinfo.htm>.

On an annual basis, the establishment survey incorporates a benchmark revision that re-anchors estimates to nearly complete employment counts available from unemployment insurance tax records. The benchmark helps to control for sampling and modeling errors in the estimates. For more information on the annual benchmark revision, please visit <http://www.bls.gov/web/cesbmart.htm>.

### **Does the establishment survey sample include small firms?**

Yes; about 40 percent of the establishment survey sample is comprised of business establishments with fewer than 20 employees. The establishment survey sample is designed to maximize the reliability of the total nonfarm employment estimate; firms from all size classes and industries are appropriately sampled to achieve that goal.

### **Does the establishment survey account for employment from new businesses?**

Yes; monthly establishment survey estimates include an adjustment to account for the net employment change generated by business births and deaths. The adjustment comes from an econometric model that forecasts the monthly net jobs impact of business births and deaths based on the actual past



values of the net impact that can be observed with a lag from the Quarterly Census of Employment and Wages. The establishment survey uses modeling rather than sampling for this purpose because the survey is not immediately able to bring new businesses into the sample. There is an unavoidable lag between the birth of a new firm and its appearance on the sampling frame and availability for selection. BLS adds new businesses to the survey twice a year.

**Is the count of unemployed persons limited to just those people receiving unemployment insurance benefits?**

No; the estimate of unemployment is based on a monthly sample survey of households. All persons who are without jobs and are actively seeking and available to work are included among the unemployed. (People on temporary layoff are included even if they do not actively seek work.) There is no requirement or question relating to unemployment insurance benefits in the monthly survey.

**Does the official unemployment rate exclude people who have stopped looking for work?**

Yes; however, there are separate estimates of persons outside the labor force who want a job, including those who have stopped looking because they believe no jobs are available (discouraged workers). In addition, alternative measures of labor underutilization (discouraged workers and other groups not officially counted as unemployed) are published each month in the Employment Situation news release.

# Technical Note

This news release presents statistics from two major surveys, the Current Population Survey (household survey) and the Current Employment Statistics survey (establishment survey). The household survey provides the information on the labor force, employment, and unemployment that appears in the A tables, marked HOUSEHOLD DATA. It is a sample survey of about 60,000 households conducted by the U.S. Census Bureau for the Bureau of Labor Statistics (BLS).

The establishment survey provides the information on the employment, hours, and earnings of workers on nonfarm payrolls that appears in the B tables, marked ESTABLISHMENT DATA. This information is collected from payroll records by BLS in cooperation with state agencies. The sample includes about 160,000 businesses and government agencies covering approximately 400,000 individual worksites. The active sample includes about one-third of all nonfarm payroll workers. The sample is drawn from a sampling frame of unemployment insurance tax accounts.

For both surveys, the data for a given month relate to a particular week or pay period. In the household survey, the reference week is generally the calendar week that contains the 12th day of the month. In the establishment survey, the reference period is the pay period including the 12th, which may or may not correspond directly to the calendar week.

## Coverage, definitions, and differences between surveys

**Household survey.** The sample is selected to reflect the entire civilian noninstitutional population. Based on responses to a series of questions on work and job search activities, each person 16 years and over in a sample household is classified as employed, unemployed, or not in the labor force.

People are classified as *employed* if they did any work at all as paid employees during the reference week; worked in their own business, profession, or on their own farm; or worked without pay at least 15 hours in a family business or farm. People are also counted as employed if they were temporarily absent from their jobs because of illness, bad weather, vacation, labor-management disputes, or personal reasons.

People are classified as *unemployed* if they meet all of the following criteria: They had no employment during the reference week; they were available for work at that time; and they made specific efforts to find employment sometime during the 4-week period ending with the reference week. Persons laid off from a job and expecting recall need not be looking for work to be counted as unemployed. The unemployment data derived from the household survey in no way depend upon the eligibility for or receipt of unemployment insurance benefits.

The *civilian labor force* is the sum of employed and unemployed persons. Those not classified as employed or unemployed are *not in the labor force*. The *unemployment rate* is the number unemployed as a percent of the labor force. The *labor force participation rate* is the labor force as a percent of the population, and the *employment-population ratio* is the employed as a percent of the population.

**Establishment survey.** The sample establishments are drawn from private nonfarm businesses such as factories, offices, and stores, as well as federal, state, and local government entities. *Employees on nonfarm payrolls* are those who received pay for any part of the reference pay period, including persons on paid leave. Persons are counted in each job they hold. *Hours and earnings* data are for private businesses and relate only to production workers in the goods-producing sector and nonsupervisory workers in the service-providing sector. Industries are classified on the basis of their principal activity in accordance with the 2007 version of the North American Industry Classification System.

**Differences in employment estimates.** The numerous conceptual and methodological differences between the household and establishment surveys result in important distinctions in the employment estimates derived from the surveys. Among these are:

- The household survey includes agricultural workers, the self-employed, unpaid family workers, and private household workers among the employed. These groups are excluded from the establishment survey.
- The household survey includes people on unpaid leave among the employed. The establishment survey does not.
- The household survey is limited to workers 16 years of age and older. The establishment survey is not limited by age.
- The household survey has no duplication of individuals, because individuals are counted only once, even if they hold more than one job. In the establishment survey, employees working at more than one job and thus appearing on more than one payroll would be counted separately for each appearance.

## Seasonal adjustment

Over the course of a year, the size of the nation's labor force and the levels of employment and unemployment undergo sharp fluctuations due to such seasonal events as changes in weather, reduced or expanded production, harvests, major holidays, and the opening and closing of schools. The effect of such seasonal variation can be very large; seasonal fluctuations may account for as much as 95 percent of the month-to-month changes in unemployment.

Because these seasonal events follow a more or less regular pattern each year, their influence on statistical trends can be eliminated by adjusting the statistics from month to month. These adjustments make nonseasonal developments, such as declines in economic activity or increases in the participation of women in the labor force, easier to spot. For example, the large number of youth entering the labor force each June is likely to obscure any other changes that have taken place relative to May, making it difficult to determine if the level of economic activity has risen or declined. However, because the effect of students finishing school in previous years is known, the statistics for the current year can be adjusted to allow for a comparable change. Insofar as the seasonal adjustment is made correctly, the adjusted figure provides a more useful tool with which to analyze changes in economic activity.

Most seasonally adjusted series are independently adjusted in both the household and establishment surveys. However, the ad-

justed series for many major estimates, such as total payroll employment, employment in most supersectors, total employment, and unemployment are computed by aggregating independently adjusted component series. For example, total unemployment is derived by summing the adjusted series for four major age-sex components; this differs from the unemployment estimate that would be obtained by directly adjusting the total or by combining the duration, reasons, or more detailed age categories.

For both the household and establishment surveys, a concurrent seasonal adjustment methodology is used in which new seasonal factors are calculated each month, using all relevant data, up to and including the data for the current month. In the household survey, new seasonal factors are used to adjust only the current month's data. In the establishment survey, however, new seasonal factors are used each month to adjust the three most recent monthly estimates. In both surveys, revisions to historical data are made once a year.

### **Reliability of the estimates**

Statistics based on the household and establishment surveys are subject to both sampling and nonsampling error. When a sample rather than the entire population is surveyed, there is a chance that the sample estimates may differ from the "true" population values they represent. The exact difference, or *sampling error*, varies depending on the particular sample selected, and this variability is measured by the standard error of the estimate. There is about a 90-percent chance, or level of confidence, that an estimate based on a sample will differ by no more than 1.6 standard errors from the "true" population value because of sampling error. BLS analyses are generally conducted at the 90-percent level of confidence.

For example, the confidence interval for the monthly change in total employment from the household survey is on the order of plus or minus 430,000. Suppose the estimate of total employment increases by 100,000 from one month to the next. The 90-percent confidence interval on the monthly change would range from -330,000 to 530,000 (100,000 +/- 430,000). These figures do not mean that the sample results are off by these magnitudes, but rather that there is about a 90-percent chance that the "true" over-the-month change lies within this interval. Since this range includes values of less than zero, we could not say with confidence that employment had, in fact, increased. If, however, the reported employment rise was half a million, then all of the values within the 90-percent confidence interval would be greater than zero. In this case, it is likely (at least a 90-percent chance) that an employment rise had, in fact, occurred. At an unemployment rate of around 5.5 percent, the 90-percent confidence interval for the monthly change in unemployment is about +/- 280,000, and for the monthly change in the unemployment rate it is about +/- .19 percentage point.

In general, estimates involving many individuals or establishments have lower standard errors (relative to the size of the estimate) than estimates which are based on a small number of observations. The precision of estimates is also improved when the data are cumulated over time such as for quarterly and annual averages. The seasonal adjustment process can also improve the stability of the monthly estimates.

The household and establishment surveys are also affected by *nonsampling error*. Nonsampling errors can occur for many reasons, including the failure to sample a segment of the population, inability to obtain information for all respondents in the sample, inability or unwillingness of respondents to provide correct information on a timely basis, mistakes made by respondents, and errors made in the collection or processing of the data.

For example, in the establishment survey, estimates for the most recent 2 months are based on incomplete returns; for this reason, these estimates are labeled preliminary in the tables. It is only after two successive revisions to a monthly estimate, when nearly all sample reports have been received, that the estimate is considered final.

Another major source of nonsampling error in the establishment survey is the inability to capture, on a timely basis, employment generated by new firms. To correct for this systematic underestimation of employment growth, an estimation procedure with two components is used to account for business births. The first component uses business deaths to impute employment for business births. This is incorporated into the sample-based link relative estimate procedure by simply not reflecting sample units going out of business, but imputing to them the same trend as the other firms in the sample. The second component is an ARIMA time series model designed to estimate the residual net birth/death employment not accounted for by the imputation. The historical time series used to create and test the ARIMA model was derived from the unemployment insurance universe micro-level database, and reflects the actual residual net of births and deaths over the past five years.

The sample-based estimates from the establishment survey are adjusted once a year (on a lagged basis) to universe counts of payroll employment obtained from administrative records of the unemployment insurance program. The difference between the March sample-based employment estimates and the March universe counts is known as a benchmark revision, and serves as a rough proxy for total survey error. The new benchmarks also incorporate changes in the classification of industries. Over the past decade, the benchmark revision for total nonfarm employment has averaged 0.2 percent, ranging from less than 0.1 percent to 0.6 percent.

### **Other information**

Information in this release will be made available to sensory impaired individuals upon request. Voice phone: (202) 691-5200; TDD message referral phone: 1-800-877-8339.

Table A-1. Employment status of the civilian population by sex and age

(Numbers in thousands)

Employment status, sex, and age	Not seasonally adjusted			Seasonally adjusted <sup>1</sup>					
	Dec. 2007	Nov. 2008	Dec. 2008	Dec. 2007	Aug. 2008	Sept. 2008	Oct. 2008	Nov. 2008	Dec. 2008
<b>TOTAL</b>									
Civilian noninstitutional population .....	233,156	234,828	235,035	233,156	234,107	234,360	234,612	234,828	235,035
Civilian labor force .....	153,705	154,624	154,349	153,836	154,823	154,621	154,878	154,620	154,447
Participation rate .....	65.9	65.8	65.7	66.0	66.1	66.0	66.0	65.8	65.7
Employed .....	146,334	144,609	143,350	146,294	145,273	145,029	144,657	144,144	143,338
Employment-population ratio .....	62.8	61.6	61.0	62.7	62.1	61.9	61.7	61.4	61.0
Unemployed .....	7,371	10,015	10,999	7,541	9,550	9,592	10,221	10,476	11,108
Unemployment rate .....	4.8	6.5	7.1	4.9	6.2	6.2	6.6	6.8	7.2
Not in labor force .....	79,451	80,204	80,686	79,320	79,284	79,739	79,734	80,208	80,588
Persons who currently want a job .....	4,398	5,077	5,180	4,666	4,836	5,140	5,065	5,393	5,488
<b>Men, 16 years and over</b>									
Civilian noninstitutional population .....	112,852	113,660	113,769	112,852	113,281	113,414	113,546	113,660	113,769
Civilian labor force .....	82,171	82,415	82,226	82,398	82,790	82,885	82,892	82,666	82,338
Participation rate .....	72.8	72.5	72.3	73.0	73.1	73.1	73.0	72.7	72.4
Employed .....	77,970	76,690	75,548	78,275	77,484	77,249	76,938	76,577	75,847
Employment-population ratio .....	69.1	67.5	66.4	69.4	68.4	68.1	67.8	67.4	66.7
Unemployed .....	4,201	5,725	6,678	4,123	5,306	5,636	5,954	6,089	6,491
Unemployment rate .....	5.1	6.9	8.1	5.0	6.4	6.8	7.2	7.4	7.9
Not in labor force .....	30,680	31,245	31,543	30,453	30,491	30,529	30,654	30,994	31,431
<b>Men, 20 years and over</b>									
Civilian noninstitutional population .....	104,197	104,978	105,083	104,197	104,613	104,741	104,869	104,978	105,083
Civilian labor force .....	78,893	79,243	79,071	78,943	79,308	79,392	79,380	79,335	78,998
Participation rate .....	75.7	75.5	75.2	75.8	75.8	75.8	75.7	75.6	75.2
Employed .....	75,296	74,283	73,088	75,496	74,737	74,503	74,292	74,045	73,285
Employment-population ratio .....	72.3	70.8	69.6	72.5	71.4	71.1	70.8	70.5	69.7
Unemployed .....	3,597	4,960	5,984	3,446	4,572	4,889	5,088	5,290	5,714
Unemployment rate .....	4.6	6.3	7.6	4.4	5.8	6.2	6.4	6.7	7.2
Not in labor force .....	25,305	25,735	26,012	25,255	25,305	25,349	25,489	25,643	26,085
<b>Women, 16 years and over</b>									
Civilian noninstitutional population .....	120,304	121,168	121,266	120,304	120,825	120,946	121,066	121,168	121,266
Civilian labor force .....	71,534	72,209	72,122	71,437	72,033	71,735	71,986	71,954	72,109
Participation rate .....	59.5	59.6	59.5	59.4	59.6	59.3	59.5	59.4	59.5
Employed .....	68,364	67,919	67,802	68,020	67,789	67,780	67,720	67,567	67,491
Employment-population ratio .....	56.8	56.1	55.9	56.5	56.1	56.0	55.9	55.8	55.7
Unemployed .....	3,170	4,290	4,320	3,418	4,244	3,956	4,267	4,387	4,618
Unemployment rate .....	4.4	5.9	6.0	4.8	5.9	5.5	5.9	6.1	6.4
Not in labor force .....	48,771	48,959	49,143	48,867	48,792	49,210	49,080	49,214	49,157
<b>Women, 20 years and over</b>									
Civilian noninstitutional population .....	111,903	112,731	112,825	111,903	112,401	112,518	112,633	112,731	112,825
Civilian labor force .....	68,116	69,108	69,042	67,888	68,666	68,385	68,700	68,753	68,891
Participation rate .....	60.9	61.3	61.2	60.7	61.1	60.8	61.0	61.0	61.1
Employed .....	65,359	65,317	65,204	64,976	65,003	65,008	64,975	64,902	64,860
Employment-population ratio .....	58.4	57.9	57.8	58.1	57.8	57.8	57.7	57.6	57.5
Unemployed .....	2,757	3,791	3,838	2,912	3,662	3,377	3,725	3,851	4,031
Unemployment rate .....	4.0	5.5	5.6	4.3	5.3	4.9	5.4	5.6	5.9
Not in labor force .....	43,787	43,623	43,784	44,015	43,736	44,133	43,933	43,978	43,935
<b>Both sexes, 16 to 19 years</b>									
Civilian noninstitutional population .....	17,056	17,118	17,126	17,056	17,092	17,101	17,110	17,118	17,126
Civilian labor force .....	6,696	6,272	6,235	7,005	6,849	6,844	6,799	6,531	6,557
Participation rate .....	39.3	36.6	36.4	41.1	40.1	40.0	39.7	38.2	38.3
Employed .....	5,679	5,008	5,058	5,822	5,533	5,518	5,390	5,196	5,194
Employment-population ratio .....	33.3	29.3	29.5	34.1	32.4	32.3	31.5	30.4	30.3
Unemployed .....	1,017	1,264	1,177	1,183	1,316	1,326	1,408	1,335	1,363
Unemployment rate .....	15.2	20.2	18.9	16.9	19.2	19.4	20.7	20.4	20.8
Not in labor force .....	10,359	10,846	10,891	10,051	10,243	10,257	10,311	10,587	10,568

<sup>1</sup> The population figures are not adjusted for seasonal variation; therefore, identical numbers appear in the unadjusted and seasonally adjusted columns.

NOTE: Updated population controls are introduced annually with the release of January data. Seasonally adjusted household data have been revised to reflect updated seasonal adjustment factors.

Table A-2. Employment status of the civilian population by race, sex, and age

(Numbers in thousands)

Employment status, race, sex, and age	Not seasonally adjusted			Seasonally adjusted <sup>1</sup>					
	Dec. 2007	Nov. 2008	Dec. 2008	Dec. 2007	Aug. 2008	Sept. 2008	Oct. 2008	Nov. 2008	Dec. 2008
<b>WHITE</b>									
Civilian noninstitutional population .....	189,093	190,221	190,351	189,093	189,747	189,916	190,085	190,221	190,351
Civilian labor force .....	125,334	126,057	125,588	125,403	125,987	125,844	126,298	126,029	125,634
Participation rate .....	66.3	66.3	66.0	66.3	66.4	66.3	66.4	66.3	66.0
Employed .....	120,004	118,721	117,409	119,947	119,082	118,964	118,722	118,226	117,357
Employment-population ratio .....	63.5	62.4	61.7	63.4	62.8	62.6	62.5	62.2	61.7
Unemployed .....	5,331	7,336	8,179	5,456	6,904	6,880	7,577	7,803	8,277
Unemployment rate .....	4.3	5.8	6.5	4.4	5.5	5.5	6.0	6.2	6.6
Not in labor force .....	63,759	64,165	64,763	63,690	63,761	64,072	63,787	64,193	64,718
<b>Men, 20 years and over</b>									
Civilian labor force .....	65,462	65,681	65,424	65,471	65,680	65,718	65,792	65,762	65,331
Participation rate .....	76.2	76.0	75.6	76.3	76.2	76.2	76.2	76.1	75.5
Employed .....	62,789	61,995	60,965	62,929	62,336	62,125	61,972	61,761	61,101
Employment-population ratio .....	73.1	71.7	70.5	73.3	72.3	72.0	71.8	71.5	70.7
Unemployed .....	2,674	3,686	4,459	2,542	3,344	3,593	3,821	4,001	4,230
Unemployment rate .....	4.1	5.6	6.8	3.9	5.1	5.5	5.8	6.1	6.5
<b>Women, 20 years and over</b>									
Civilian labor force .....	54,465	55,131	55,033	54,249	54,703	54,543	54,891	54,810	54,878
Participation rate .....	60.4	60.8	60.6	60.2	60.5	60.2	60.6	60.4	60.5
Employed .....	52,517	52,454	52,199	52,148	52,113	52,233	52,178	52,014	51,846
Employment-population ratio .....	58.3	57.8	57.5	57.8	57.6	57.7	57.6	57.3	57.1
Unemployed .....	1,948	2,677	2,833	2,101	2,590	2,310	2,714	2,796	3,031
Unemployment rate .....	3.6	4.9	5.1	3.9	4.7	4.2	4.9	5.1	5.5
<b>Both sexes, 16 to 19 years</b>									
Civilian labor force .....	5,406	5,245	5,131	5,683	5,604	5,583	5,615	5,457	5,425
Participation rate .....	41.3	40.0	39.1	43.4	42.8	42.6	42.9	41.6	41.4
Employed .....	4,698	4,272	4,245	4,870	4,634	4,605	4,572	4,451	4,409
Employment-population ratio .....	35.9	32.6	32.4	37.2	35.4	35.2	34.9	34.0	33.6
Unemployed .....	709	973	886	813	970	978	1,043	1,006	1,016
Unemployment rate .....	13.1	18.6	17.3	14.3	17.3	17.5	18.6	18.4	18.7
<b>BLACK OR AFRICAN AMERICAN</b>									
Civilian noninstitutional population .....	27,704	28,021	28,059	27,704	27,896	27,939	27,982	28,021	28,059
Civilian labor force .....	17,498	17,683	17,720	17,574	17,949	17,733	17,768	17,708	17,796
Participation rate .....	63.2	63.1	63.2	63.4	64.3	63.5	63.5	63.2	63.4
Employed .....	15,999	15,705	15,649	16,013	16,026	15,709	15,762	15,703	15,674
Employment-population ratio .....	57.7	56.0	55.8	57.8	57.4	56.2	56.3	56.0	55.9
Unemployed .....	1,499	1,979	2,071	1,561	1,923	2,024	2,006	2,005	2,122
Unemployment rate .....	8.6	11.2	11.7	8.9	10.7	11.4	11.3	11.3	11.9
Not in labor force .....	10,206	10,338	10,339	10,129	9,947	10,206	10,214	10,313	10,263
<b>Men, 20 years and over</b>									
Civilian labor force .....	7,858	7,957	7,981	7,888	8,072	8,000	7,961	7,954	7,999
Participation rate .....	70.4	70.6	70.7	70.7	72.0	71.2	70.7	70.5	70.8
Employed .....	7,196	7,013	6,879	7,244	7,213	7,049	7,019	6,989	6,930
Employment-population ratio .....	64.5	62.2	60.9	64.9	64.3	62.7	62.3	62.0	61.4
Unemployed .....	662	944	1,102	644	859	952	942	965	1,069
Unemployment rate .....	8.4	11.9	13.8	8.2	10.6	11.9	11.8	12.1	13.4
<b>Women, 20 years and over</b>									
Civilian labor force .....	8,814	9,069	9,031	8,830	9,036	8,931	9,016	9,069	9,060
Participation rate .....	63.5	64.5	64.2	63.6	64.6	63.7	64.2	64.5	64.4
Employed .....	8,212	8,234	8,264	8,203	8,218	8,097	8,213	8,249	8,256
Employment-population ratio .....	59.1	58.6	58.7	59.1	58.7	57.8	58.5	58.7	58.7
Unemployed .....	602	836	767	627	818	834	804	820	804
Unemployment rate .....	6.8	9.2	8.5	7.1	9.1	9.3	8.9	9.0	8.9
<b>Both sexes, 16 to 19 years</b>									
Civilian labor force .....	826	657	708	856	842	802	790	685	736
Participation rate .....	31.0	24.4	26.3	32.2	31.4	29.9	29.4	25.5	27.4
Employed .....	590	457	506	567	595	563	531	464	488
Employment-population ratio .....	22.2	17.0	18.8	21.3	22.2	21.0	19.8	17.3	18.1
Unemployed .....	235	199	202	289	247	239	260	221	248
Unemployment rate .....	28.5	30.4	28.5	33.8	29.3	29.8	32.9	32.2	33.7

See footnotes at end of table.

**Table A-2. Employment status of the civilian population by race, sex, and age — Continued**

(Numbers in thousands)

Employment status, race, sex, and age	Not seasonally adjusted			Seasonally adjusted <sup>1</sup>					
	Dec. 2007	Nov. 2008	Dec. 2008	Dec. 2007	Aug. 2008	Sept. 2008	Oct. 2008	Nov. 2008	Dec. 2008
<b>ASIAN</b>									
Civilian noninstitutional population .....	10,801	10,811	10,873	(2)	(2)	(2)	(2)	(2)	(2)
Civilian labor force .....	7,225	7,134	7,223	(2)	(2)	(2)	(2)	(2)	(2)
Participation rate .....	66.9	66.0	66.4	(2)	(2)	(2)	(2)	(2)	(2)
Employed .....	6,958	6,791	6,857	(2)	(2)	(2)	(2)	(2)	(2)
Employment-population ratio .....	64.4	62.8	63.1	(2)	(2)	(2)	(2)	(2)	(2)
Unemployed .....	267	343	365	(2)	(2)	(2)	(2)	(2)	(2)
Unemployment rate .....	3.7	4.8	5.1	(2)	(2)	(2)	(2)	(2)	(2)
Not in labor force .....	3,577	3,677	3,651	(2)	(2)	(2)	(2)	(2)	(2)

<sup>1</sup> The population figures are not adjusted for seasonal variation; therefore, identical numbers appear in the unadjusted and seasonally adjusted columns.

<sup>2</sup> Data not available.

NOTE: Estimates for the above race groups will not sum to totals shown in

table A-1 because data are not presented for all races. Updated population controls are introduced annually with the release of January data. Seasonally adjusted household data have been revised to reflect updated seasonal adjustment factors.

**Table A-3. Employment status of the Hispanic or Latino population by sex and age**

(Numbers in thousands)

Employment status, sex, and age	Not seasonally adjusted			Seasonally adjusted <sup>1</sup>					
	Dec. 2007	Nov. 2008	Dec. 2008	Dec. 2007	Aug. 2008	Sept. 2008	Oct. 2008	Nov. 2008	Dec. 2008
<b>HISPANIC OR LATINO ETHNICITY</b>									
Civilian noninstitutional population .....	31,903	32,558	32,649	31,903	32,273	32,369	32,465	32,558	32,649
Civilian labor force .....	21,924	22,137	22,221	21,861	22,201	22,259	22,187	22,074	22,134
Participation rate .....	68.7	68.0	68.1	68.5	68.8	68.8	68.3	67.8	67.8
Employed .....	20,534	20,263	20,129	20,504	20,404	20,506	20,232	20,168	20,096
Employment-population ratio .....	64.4	62.2	61.7	64.3	63.2	63.4	62.3	61.9	61.6
Unemployed .....	1,390	1,874	2,093	1,357	1,797	1,752	1,955	1,906	2,038
Unemployment rate .....	6.3	8.5	9.4	6.2	8.1	7.9	8.8	8.6	9.2
Not in labor force .....	9,980	10,421	10,428	10,042	10,073	10,111	10,278	10,484	10,515
<b>Men, 20 years and over</b>									
Civilian labor force .....	12,654	12,760	12,752	(2)	(2)	(2)	(2)	(2)	(2)
Participation rate .....	85.0	84.1	83.8	(2)	(2)	(2)	(2)	(2)	(2)
Employed .....	11,921	11,777	11,558	(2)	(2)	(2)	(2)	(2)	(2)
Employment-population ratio .....	80.0	77.7	76.0	(2)	(2)	(2)	(2)	(2)	(2)
Unemployed .....	733	983	1,194	(2)	(2)	(2)	(2)	(2)	(2)
Unemployment rate .....	5.8	7.7	9.4	(2)	(2)	(2)	(2)	(2)	(2)
<b>Women, 20 years and over</b>									
Civilian labor force .....	8,206	8,362	8,430	(2)	(2)	(2)	(2)	(2)	(2)
Participation rate .....	58.6	58.5	58.8	(2)	(2)	(2)	(2)	(2)	(2)
Employed .....	7,707	7,745	7,765	(2)	(2)	(2)	(2)	(2)	(2)
Employment-population ratio .....	55.0	54.2	54.2	(2)	(2)	(2)	(2)	(2)	(2)
Unemployed .....	498	618	665	(2)	(2)	(2)	(2)	(2)	(2)
Unemployment rate .....	6.1	7.4	7.9	(2)	(2)	(2)	(2)	(2)	(2)
<b>Both sexes, 16 to 19 years</b>									
Civilian labor force .....	1,064	1,015	1,039	(2)	(2)	(2)	(2)	(2)	(2)
Participation rate .....	35.5	32.8	33.5	(2)	(2)	(2)	(2)	(2)	(2)
Employed .....	906	741	805	(2)	(2)	(2)	(2)	(2)	(2)
Employment-population ratio .....	30.2	24.0	26.0	(2)	(2)	(2)	(2)	(2)	(2)
Unemployed .....	158	274	234	(2)	(2)	(2)	(2)	(2)	(2)
Unemployment rate .....	14.9	27.0	22.6	(2)	(2)	(2)	(2)	(2)	(2)

<sup>1</sup> The population figures are not adjusted for seasonal variation; therefore, identical numbers appear in the unadjusted and seasonally adjusted columns.

<sup>2</sup> Data not available.

NOTE: Persons whose ethnicity is identified as Hispanic or Latino may be of

any race. Updated population controls are introduced annually with the release of January data. Seasonally adjusted household data have been revised to reflect updated seasonal adjustment factors.

Table A-4. Employment status of the civilian population 25 years and over by educational attainment

(Numbers in thousands)

Educational attainment	Not seasonally adjusted			Seasonally adjusted					
	Dec. 2007	Nov. 2008	Dec. 2008	Dec. 2007	Aug. 2008	Sept. 2008	Oct. 2008	Nov. 2008	Dec. 2008
<b>Less than a high school diploma</b>									
Civilian labor force .....	12,283	12,137	12,136	12,283	12,203	12,165	12,390	12,185	12,108
Participation rate .....	46.4	47.0	46.5	46.4	47.5	47.0	48.3	47.2	46.4
Employed .....	11,280	10,865	10,719	11,356	11,014	10,977	11,106	10,899	10,793
Employment-population ratio .....	42.6	42.1	41.1	42.9	42.9	42.5	43.3	42.2	41.4
Unemployed .....	1,003	1,272	1,417	927	1,189	1,187	1,284	1,286	1,315
Unemployment rate .....	8.2	10.5	11.7	7.5	9.7	9.8	10.4	10.6	10.9
<b>High school graduates, no college <sup>1</sup></b>									
Civilian labor force .....	38,850	38,586	38,838	38,714	38,323	38,264	38,428	38,271	38,656
Participation rate .....	62.9	62.8	62.7	62.7	62.8	62.4	62.6	62.3	62.5
Employed .....	37,036	36,009	35,815	36,928	36,084	35,851	35,939	35,643	35,683
Employment-population ratio .....	60.0	58.6	57.9	59.8	59.1	58.5	58.5	58.1	57.6
Unemployed .....	1,814	2,577	3,023	1,786	2,239	2,413	2,489	2,628	2,972
Unemployment rate .....	4.7	6.7	7.8	4.6	5.8	6.3	6.5	6.9	7.7
<b>Some college or associate degree</b>									
Civilian labor force .....	36,269	37,342	36,867	36,428	36,736	36,952	36,820	37,120	37,049
Participation rate .....	72.0	72.1	71.7	72.3	71.6	71.8	71.5	71.6	72.0
Employed .....	34,932	35,380	34,819	35,071	34,913	35,053	34,867	35,077	34,969
Employment-population ratio .....	69.3	68.3	67.7	69.6	68.0	68.1	67.7	67.7	68.0
Unemployed .....	1,337	1,961	2,048	1,356	1,823	1,898	1,954	2,043	2,080
Unemployment rate .....	3.7	5.3	5.6	3.7	5.0	5.1	5.3	5.5	5.6
<b>Bachelor's degree and higher <sup>2</sup></b>									
Civilian labor force .....	44,620	45,272	45,202	44,552	45,327	45,183	45,454	45,232	45,182
Participation rate .....	78.2	77.8	77.9	78.1	77.4	77.6	77.7	77.7	77.9
Employed .....	43,725	43,900	43,619	43,606	44,082	44,011	44,044	43,794	43,517
Employment-population ratio .....	76.6	75.4	75.2	76.4	75.3	75.6	75.3	75.3	75.0
Unemployed .....	895	1,372	1,583	946	1,244	1,172	1,410	1,438	1,665
Unemployment rate .....	2.0	3.0	3.5	2.1	2.7	2.6	3.1	3.2	3.7

<sup>1</sup> Includes persons with a high school diploma or equivalent.<sup>2</sup> Includes persons with bachelor's, master's, professional, and doctoral degrees.

NOTE: Updated population controls are introduced annually with the release of January data. Seasonally adjusted household data have been revised to reflect updated seasonal adjustment factors.

Table A-5. Employed persons by class of worker and part-time status

(In thousands)

Category	Not seasonally adjusted			Seasonally adjusted					
	Dec. 2007	Nov. 2008	Dec. 2008	Dec. 2007	Aug. 2008	Sept. 2008	Oct. 2008	Nov. 2008	Dec. 2008
<b>CLASS OF WORKER</b>									
Agriculture and related industries .....	2,078	2,141	2,068	2,211	2,138	2,199	2,177	2,206	2,191
Wage and salary workers .....	1,235	1,198	1,162	1,350	1,292	1,323	1,313	1,267	1,264
Self-employed workers .....	825	920	883	866	822	824	827	915	925
Unpaid family workers .....	17	23	23	( <sup>1</sup> )	( <sup>1</sup> )	( <sup>1</sup> )	( <sup>1</sup> )	( <sup>1</sup> )	( <sup>1</sup> )
Nonagricultural industries .....	144,256	142,468	141,282	143,992	143,111	142,851	142,566	141,901	141,047
Wage and salary workers .....	135,125	133,697	132,518	134,659	133,727	133,582	133,694	132,983	132,082
Government .....	20,836	21,613	21,415	20,807	21,257	21,183	21,539	21,431	21,395
Private industries .....	114,289	112,084	111,103	113,846	112,489	112,407	112,170	111,542	110,684
Private households .....	803	836	782	( <sup>1</sup> )	( <sup>1</sup> )	( <sup>1</sup> )	( <sup>1</sup> )	( <sup>1</sup> )	( <sup>1</sup> )
Other industries .....	113,486	111,247	110,321	113,005	111,721	111,591	111,279	110,677	109,863
Self-employed workers .....	9,049	8,706	8,701	9,291	9,313	9,178	8,852	8,816	8,940
Unpaid family workers .....	81	65	62	( <sup>1</sup> )	( <sup>1</sup> )	( <sup>1</sup> )	( <sup>1</sup> )	( <sup>1</sup> )	( <sup>1</sup> )
<b>PERSONS AT WORK PART TIME <sup>2</sup></b>									
All industries:									
Part time for economic reasons .....	4,750	7,135	8,250	4,638	5,879	6,292	6,848	7,323	8,038
Slack work or business conditions .....	3,308	5,354	6,340	3,154	4,240	4,418	4,953	5,399	6,020
Could only find part-time work .....	1,172	1,509	1,562	1,223	1,412	1,514	1,514	1,585	1,617
Part time for noneconomic reasons .....	20,361	19,892	19,719	19,536	19,690	19,275	19,083	18,886	18,922
Nonagricultural industries:									
Part time for economic reasons .....	4,639	7,001	8,110	4,548	5,802	6,167	6,742	7,209	7,932
Slack work or business conditions .....	3,250	5,251	6,250	3,101	4,171	4,279	4,889	5,304	5,938
Could only find part-time work .....	1,153	1,497	1,553	1,206	1,385	1,541	1,499	1,579	1,619
Part time for noneconomic reasons .....	20,074	19,592	19,405	19,251	19,269	18,930	18,808	18,635	18,642

<sup>1</sup> Data not available.

<sup>2</sup> Persons at work excludes employed persons who were absent from their jobs during the entire reference week for reasons such as vacation, illness, or industrial dispute. Part time for noneconomic reasons excludes persons who usually work full time but worked only 1 to 34 hours during the reference week for reasons such as holidays, illness, and bad weather.

NOTE: Detail for the seasonally adjusted data shown in this table will not necessarily add to totals because of the independent seasonal adjustment of the various series. Updated population controls are introduced annually with the release of January data. Seasonally adjusted household data have been revised to reflect updated seasonal adjustment factors.



Table A-6. Selected employment indicators

(In thousands)

Characteristic	Not seasonally adjusted			Seasonally adjusted					
	Dec. 2007	Nov. 2008	Dec. 2008	Dec. 2007	Aug. 2008	Sept. 2008	Oct. 2008	Nov. 2008	Dec. 2008
<b>AGE AND SEX</b>									
Total, 16 years and over .....	146,334	144,609	143,350	146,294	145,273	145,029	144,657	144,144	143,338
16 to 19 years .....	5,679	5,008	5,058	5,822	5,533	5,518	5,390	5,196	5,194
16 to 17 years .....	2,132	1,771	1,743	2,171	1,984	2,023	1,933	1,791	1,779
18 to 19 years .....	3,547	3,237	3,314	3,646	3,549	3,525	3,469	3,408	3,413
20 years and over .....	140,655	139,601	138,292	140,473	139,740	139,511	139,267	138,948	138,144
20 to 24 years .....	13,682	13,446	13,320	13,731	13,649	13,625	13,528	13,443	13,374
25 years and over .....	126,973	126,155	124,972	126,737	126,140	125,950	125,833	125,422	124,748
25 to 54 years .....	100,653	98,921	97,781	100,519	99,217	99,086	98,803	98,373	97,651
25 to 34 years .....	31,672	31,298	30,885	31,652	31,425	31,352	31,122	31,070	30,864
35 to 44 years .....	34,163	33,007	32,731	34,116	33,254	33,250	33,176	32,883	32,691
45 to 54 years .....	34,818	34,616	34,165	34,751	34,538	34,485	34,505	34,420	34,097
55 years and over .....	26,320	27,233	27,191	26,218	26,923	26,863	27,029	27,049	27,096
Men, 16 years and over .....	77,970	76,690	75,548	78,275	77,484	77,249	76,938	76,577	75,847
16 to 19 years .....	2,674	2,406	2,460	2,779	2,748	2,746	2,646	2,531	2,562
16 to 17 years .....	932	769	797	989	939	958	895	800	847
18 to 19 years .....	1,742	1,638	1,663	1,787	1,818	1,797	1,751	1,728	1,712
20 years and over .....	75,296	74,283	73,088	75,496	74,737	74,503	74,292	74,045	73,285
20 to 24 years .....	7,180	6,939	6,760	7,279	7,134	7,153	6,974	6,965	6,863
25 years and over .....	68,116	67,344	66,328	68,258	67,653	67,365	67,372	67,039	66,456
25 to 54 years .....	54,240	52,983	52,031	54,355	53,385	53,136	53,090	52,740	52,128
25 to 34 years .....	17,430	17,076	16,784	17,442	17,195	17,112	17,064	16,979	16,789
35 to 44 years .....	18,433	17,871	17,581	18,514	18,068	18,001	17,962	17,816	17,663
45 to 54 years .....	18,377	18,036	17,666	18,399	18,121	18,023	18,065	17,944	17,676
55 years and over .....	13,876	14,361	14,297	13,902	14,268	14,230	14,282	14,299	14,328
Women, 16 years and over .....	68,364	67,919	67,802	68,020	67,789	67,780	67,720	67,567	67,491
16 to 19 years .....	3,005	2,602	2,598	3,043	2,785	2,772	2,744	2,665	2,632
16 to 17 years .....	1,200	1,002	946	1,182	1,045	1,065	1,038	990	932
18 to 19 years .....	1,805	1,600	1,651	1,860	1,731	1,728	1,718	1,680	1,701
20 years and over .....	65,359	65,317	65,204	64,976	65,003	65,008	64,975	64,902	64,860
20 to 24 years .....	6,502	6,507	6,560	6,452	6,514	6,472	6,553	6,478	6,510
25 years and over .....	58,857	58,810	58,644	58,480	58,487	58,585	58,460	58,383	58,292
25 to 54 years .....	46,413	45,938	45,750	46,164	45,832	45,951	45,713	45,634	45,523
25 to 34 years .....	14,242	14,223	14,101	14,210	14,230	14,240	14,058	14,091	14,075
35 to 44 years .....	15,729	15,135	15,150	15,601	15,186	15,249	15,215	15,067	15,027
45 to 54 years .....	16,441	16,580	16,499	16,353	16,417	16,462	16,440	16,476	16,421
55 years and over .....	12,444	12,872	12,894	12,316	12,655	12,634	12,747	12,750	12,769
<b>MARITAL STATUS</b>									
Married men, spouse present .....	46,281	45,781	45,215	46,233	45,804	45,887	45,787	45,610	45,182
Married women, spouse present .....	35,898	35,937	35,835	35,662	35,994	35,864	35,590	35,649	35,632
Women who maintain families .....	9,049	9,314	8,987	( <sup>1</sup> )	( <sup>1</sup> )	( <sup>1</sup> )	( <sup>1</sup> )	( <sup>1</sup> )	( <sup>1</sup> )
<b>FULL- OR PART-TIME STATUS</b>									
Full-time workers <sup>2</sup> .....	121,042	118,432	116,422	121,501	119,643	119,661	119,304	118,413	116,865
Part-time workers <sup>3</sup> .....	25,291	26,176	26,927	24,701	25,649	25,411	25,452	25,577	26,250
<b>MULTIPLE JOBHOLDERS</b>									
Total multiple jobholders .....	7,577	7,539	7,432	7,479	8,013	7,612	7,551	7,410	7,352
Percent of total employed .....	5.2	5.2	5.2	5.1	5.5	5.2	5.2	5.1	5.1

<sup>1</sup> Data not available.<sup>2</sup> Employed full-time workers are persons who usually work 35 hours or more per week.<sup>3</sup> Employed part-time workers are persons who usually work less than 35 hours per week.

NOTE: Detail for the seasonally adjusted data shown in this table will not necessarily add to totals because of the independent seasonal adjustment of the various series. Updated population controls are introduced annually with the release of January data. Seasonally adjusted household data have been revised to reflect updated seasonal adjustment factors.

Table A-7. Selected unemployment indicators, seasonally adjusted

Characteristic	Number of unemployed persons (in thousands)			Unemployment rates <sup>1</sup>					
	Dec. 2007	Nov. 2008	Dec. 2008	Dec. 2007	Aug. 2008	Sept. 2008	Oct. 2008	Nov. 2008	Dec. 2008
<b>AGE AND SEX</b>									
Total, 16 years and over .....	7,541	10,476	11,108	4.9	6.2	6.2	6.6	6.8	7.2
16 to 19 years .....	1,183	1,335	1,363	16.9	19.2	19.4	20.7	20.4	20.8
16 to 17 years .....	535	567	564	19.8	22.2	21.7	23.1	24.1	24.1
18 to 19 years .....	654	765	806	15.2	17.4	17.8	18.4	18.3	19.1
20 years and over .....	6,358	9,141	9,745	4.3	5.6	5.6	6.0	6.2	6.6
20 to 24 years .....	1,391	1,684	1,843	9.2	10.7	10.8	10.6	11.1	12.1
25 years and over .....	4,981	7,421	7,903	3.8	5.0	5.0	5.3	5.6	6.0
25 to 54 years .....	4,159	6,074	6,526	4.0	5.2	5.3	5.5	5.8	6.3
25 to 34 years .....	1,601	2,341	2,490	4.8	6.3	6.2	6.7	7.0	7.5
35 to 44 years .....	1,314	1,874	2,041	3.7	5.0	5.2	5.4	5.4	5.9
45 to 54 years .....	1,245	1,859	1,995	3.5	4.4	4.5	4.6	5.1	5.5
55 years and over .....	843	1,350	1,409	3.1	4.1	4.2	4.6	4.8	4.9
Men, 16 years and over .....	4,123	6,089	6,491	5.0	6.4	6.8	7.2	7.4	7.9
16 to 19 years .....	677	799	777	19.6	21.1	21.4	24.7	24.0	23.3
16 to 17 years .....	282	324	313	22.2	24.5	23.2	27.3	28.8	27.0
18 to 19 years .....	398	466	468	18.2	19.0	20.4	21.7	21.2	21.5
20 years and over .....	3,446	5,290	5,714	4.4	5.8	6.2	6.4	6.7	7.2
20 to 24 years .....	780	1,027	1,137	9.7	11.7	11.9	12.9	12.9	14.2
25 years and over .....	2,659	4,218	4,545	3.7	5.1	5.5	5.6	5.9	6.4
25 to 54 years .....	2,212	3,448	3,770	3.9	5.3	5.8	5.8	6.1	6.7
25 to 34 years .....	902	1,373	1,510	4.9	6.5	6.9	7.1	7.5	8.3
35 to 44 years .....	682	1,008	1,117	3.6	5.0	5.6	5.6	5.4	5.9
45 to 54 years .....	627	1,068	1,144	3.3	4.5	5.0	4.8	5.6	6.1
55 years and over .....	447	770	775	3.1	4.3	4.5	4.7	5.1	5.1
Women, 16 years and over .....	3,418	4,387	4,618	4.8	5.9	5.5	5.9	6.1	6.4
16 to 19 years .....	506	536	587	14.3	17.3	17.3	16.5	16.7	18.2
16 to 17 years .....	253	243	251	17.6	20.1	20.3	19.2	19.7	21.2
18 to 19 years .....	256	299	339	12.1	15.6	14.9	14.7	15.1	16.6
20 years and over .....	2,912	3,851	4,031	4.3	5.3	4.9	5.4	5.6	5.9
20 to 24 years .....	611	657	707	8.6	9.5	9.4	8.1	9.2	9.8
25 years and over .....	2,322	3,202	3,358	3.8	4.9	4.4	5.1	5.2	5.4
25 to 54 years .....	1,947	2,625	2,756	4.0	5.1	4.6	5.2	5.4	5.7
25 to 34 years .....	698	968	981	4.7	6.0	5.3	6.3	6.4	6.5
35 to 44 years .....	631	866	924	3.9	5.0	4.8	5.2	5.4	5.8
45 to 54 years .....	617	791	852	3.6	4.3	3.8	4.4	4.6	4.9
55 years and over <sup>2</sup> .....	366	577	583	2.9	4.5	3.9	4.3	4.3	4.3
<b>MARITAL STATUS</b>									
Married men, spouse present .....	1,255	2,003	2,077	2.6	3.7	3.9	4.1	4.2	4.4
Married women, spouse present .....	1,105	1,590	1,672	3.0	3.7	3.5	4.2	4.3	4.5
Women who maintain families <sup>2</sup> .....	669	953	948	6.9	9.6	8.2	8.8	9.3	9.5
<b>FULL- OR PART-TIME STATUS</b>									
Full-time workers <sup>3</sup> .....	6,147	8,940	9,537	4.8	6.3	6.3	6.8	7.0	7.5
Part-time workers <sup>4</sup> .....	1,429	1,566	1,632	5.5	5.7	5.9	5.7	5.8	5.9

<sup>1</sup> Unemployment as a percent of the civilian labor force.<sup>2</sup> Not seasonally adjusted.<sup>3</sup> Full-time workers are unemployed persons who have expressed a desire to work full time (35 hours or more per week) or are on layoff from full-time jobs.<sup>4</sup> Part-time workers are unemployed persons who have expressed a desire to work part time (less than 35 hours per week) or are on layoff from part-time jobs.

NOTE: Detail for the seasonally adjusted data shown in this table will not necessarily add to totals because of the independent seasonal adjustment of the various series. Updated population controls are introduced annually with the release of January data. Data have been revised to reflect updated seasonal adjustment factors.

Table A-8. Unemployed persons by reason for unemployment

(Numbers in thousands)

Reason	Not seasonally adjusted			Seasonally adjusted					
	Dec. 2007	Nov. 2008	Dec. 2008	Dec. 2007	Aug. 2008	Sept. 2008	Oct. 2008	Nov. 2008	Dec. 2008
<b>NUMBER OF UNEMPLOYED</b>									
Job losers and persons who completed temporary jobs	4,013	5,746	6,878	3,785	4,994	5,348	5,811	6,156	6,471
On temporary layoff .....	1,061	1,166	1,675	966	1,279	1,396	1,367	1,413	1,524
Not on temporary layoff .....	2,952	4,580	5,203	2,820	3,715	3,952	4,443	4,744	4,946
Permanent job losers .....	2,066	3,520	4,034	(1)	(1)	(1)	(1)	(1)	(1)
Persons who completed temporary jobs .....	887	1,060	1,169	(1)	(1)	(1)	(1)	(1)	(1)
Job leavers .....	724	916	928	787	999	982	946	940	1,007
Reentrants .....	2,078	2,659	2,523	2,302	2,678	2,587	2,650	2,655	2,777
New entrants .....	556	694	670	693	829	822	825	760	829
<b>PERCENT DISTRIBUTION</b>									
Total unemployed .....	100.0	100.0	100.0	100.0	100.0	100.0	100.0	100.0	100.0
Job losers and persons who completed temporary jobs .....	54.4	57.4	62.5	50.0	52.6	54.9	56.8	58.6	58.4
On temporary layoff .....	14.4	11.6	15.2	12.8	13.5	14.3	13.4	13.4	13.8
Not on temporary layoff .....	40.1	45.7	47.3	37.3	39.1	40.6	43.4	45.1	44.6
Job leavers .....	9.8	9.1	8.4	10.4	10.5	10.1	9.2	8.9	9.1
Reentrants .....	28.2	26.6	22.9	30.4	28.2	26.6	25.9	25.3	25.1
New entrants .....	7.5	6.9	6.1	9.2	8.7	8.4	8.1	7.2	7.5
<b>UNEMPLOYED AS A PERCENT OF THE CIVILIAN LABOR FORCE</b>									
Job losers and persons who completed temporary jobs .....	2.6	3.7	4.5	2.5	3.2	3.5	3.8	4.0	4.2
Job leavers .....	.5	.6	.6	.5	.6	.6	.6	.6	.7
Reentrants .....	1.4	1.7	1.6	1.5	1.7	1.7	1.7	1.7	1.8
New entrants .....	.4	.4	.4	.5	.5	.5	.5	.5	.5

<sup>1</sup> Data not available.

NOTE: Updated population controls are introduced annually with the release of January data. Seasonally adjusted household data have been revised to reflect updated seasonal adjustment factors.

Table A-9. Unemployed persons by duration of unemployment

(Numbers in thousands)

Duration	Not seasonally adjusted			Seasonally adjusted					
	Dec. 2007	Nov. 2008	Dec. 2008	Dec. 2007	Aug. 2008	Sept. 2008	Oct. 2008	Nov. 2008	Dec. 2008
<b>NUMBER OF UNEMPLOYED</b>									
Less than 5 weeks .....	2,666	3,079	3,227	2,718	3,242	2,864	3,108	3,255	3,267
5 to 14 weeks .....	2,302	3,130	3,390	2,314	2,874	3,083	3,055	3,141	3,398
15 weeks and over .....	2,403	3,806	4,381	2,484	3,447	3,662	4,109	3,964	4,517
15 to 26 weeks .....	1,128	1,614	1,869	1,169	1,568	1,621	1,834	1,757	1,927
27 weeks and over .....	1,275	2,192	2,512	1,315	1,878	2,041	2,275	2,207	2,591
Average (mean) duration, in weeks .....	16.4	19.2	19.5	16.5	17.6	18.7	19.8	18.9	19.7
Median duration, in weeks .....	8.3	9.9	10.5	8.4	9.3	10.3	10.6	10.0	10.6
<b>PERCENT DISTRIBUTION</b>									
Total unemployed .....	100.0	100.0	100.0	100.0	100.0	100.0	100.0	100.0	100.0
Less than 5 weeks .....	36.2	30.7	29.3	36.2	33.9	29.8	30.3	31.4	29.2
5 to 14 weeks .....	31.2	31.3	30.8	30.8	30.1	32.1	29.7	30.3	30.4
15 weeks and over .....	32.6	38.0	39.8	33.1	36.0	38.1	40.0	38.3	40.4
15 to 26 weeks .....	15.3	16.1	17.0	15.6	16.4	16.9	17.9	17.0	17.2
27 weeks and over .....	17.3	21.9	22.8	17.5	19.6	21.2	22.1	21.3	23.2

NOTE: Updated population controls are introduced annually with the release of January data. Seasonally adjusted household data have been revised to reflect updated seasonal adjustment factors.

Table A-10. Employed and unemployed persons by occupation, not seasonally adjusted

(Numbers in thousands)

Occupation	Employed		Unemployed		Unemployment rates	
	Dec. 2007	Dec. 2008	Dec. 2007	Dec. 2008	Dec. 2007	Dec. 2008
Total, 16 years and over <sup>1</sup> .....	146,334	143,350	7,371	10,999	4.8	7.1
Management, professional, and related occupations .....	52,324	52,548	1,041	1,802	2.0	3.3
Management, business, and financial operations occupations .....	21,699	21,928	461	888	2.1	3.9
Professional and related occupations .....	30,625	30,619	580	915	1.9	2.9
Service occupations .....	23,551	24,371	1,571	2,057	6.3	7.8
Sales and office occupations .....	36,467	34,987	1,717	2,448	4.5	6.5
Sales and related occupations .....	16,654	16,354	903	1,233	5.1	7.0
Office and administrative support occupations .....	19,812	18,633	814	1,215	3.9	6.1
Natural resources, construction, and maintenance occupations .....	15,459	14,202	1,286	2,063	7.7	12.7
Farming, fishing, and forestry occupations .....	931	901	101	201	9.8	18.3
Construction and extraction occupations .....	9,302	8,025	990	1,522	9.6	15.9
Installation, maintenance, and repair occupations .....	5,226	5,276	195	339	3.6	6.0
Production, transportation, and material moving occupations .....	18,533	17,242	1,174	1,928	6.0	10.1
Production occupations .....	9,458	8,421	600	992	6.0	10.5
Transportation and material moving occupations .....	9,075	8,821	575	936	6.0	9.6

<sup>1</sup> Persons with no previous work experience and persons whose last job was in the Armed Forces are included in the unemployed total.

NOTE: Updated population controls are introduced annually with the release of January data.

Table A-11. Unemployed persons by industry and class of worker, not seasonally adjusted

Industry and class of worker	Number of unemployed persons (in thousands)		Unemployment rates	
	Dec. 2007	Dec. 2008	Dec. 2007	Dec. 2008
Total, 16 years and over <sup>1</sup> .....	7,371	10,999	4.8	7.1
Nonagricultural private wage and salary workers .....	5,943	9,030	4.9	7.5
Mining .....	24	46	3.4	5.2
Construction .....	968	1,438	9.4	15.3
Manufacturing .....	772	1,315	4.6	8.3
Durable goods .....	459	839	4.3	8.0
Nondurable goods .....	313	477	5.1	8.8
Wholesale and retail trade .....	1,009	1,535	4.8	7.2
Transportation and utilities .....	210	421	3.4	6.7
Information .....	125	219	3.7	6.9
Financial activities .....	315	540	3.2	5.6
Professional and business services .....	803	1,147	5.7	8.1
Education and health services .....	521	791	2.6	3.8
Leisure and hospitality .....	961	1,210	7.9	9.5
Other services .....	235	367	3.9	6.1
Agriculture and related private wage and salary workers .....	96	229	7.5	17.0
Government workers .....	451	511	2.1	2.3
Self employed and unpaid family workers .....	326	559	3.2	5.5

<sup>1</sup> Persons with no previous work experience are included in the unemployed total.

NOTE: Updated population controls are introduced annually with the release of January data.

Table A-12. Alternative measures of labor underutilization

(Percent)

Measure	Not seasonally adjusted			Seasonally adjusted					
	Dec. 2007	Nov. 2008	Dec. 2008	Dec. 2007	Aug. 2008	Sept. 2008	Oct. 2008	Nov. 2008	Dec. 2008
U-1 Persons unemployed 15 weeks or longer, as a percent of the civilian labor force .....	1.6	2.5	2.8	1.6	2.2	2.4	2.7	2.6	2.9
U-2 Job losers and persons who completed temporary jobs, as a percent of the civilian labor force .....	2.6	3.7	4.5	2.5	3.2	3.5	3.8	4.0	4.2
<b>U-3 Total unemployed, as a percent of the civilian labor force (official unemployment rate) .....</b>	<b>4.8</b>	<b>6.5</b>	<b>7.1</b>	<b>4.9</b>	<b>6.2</b>	<b>6.2</b>	<b>6.6</b>	<b>6.8</b>	<b>7.2</b>
U-4 Total unemployed plus discouraged workers, as a percent of the civilian labor force plus discouraged workers .....	5.0	6.8	7.5	5.1	6.4	6.5	6.9	7.1	7.6
U-5 Total unemployed, plus discouraged workers, plus all other marginally attached workers, as a percent of the civilian labor force plus all marginally attached workers .....	5.6	7.6	8.3	5.7	7.2	7.2	7.6	7.9	8.3
U-6 Total unemployed, plus all marginally attached workers, plus total employed part time for economic reasons, as a percent of the civilian labor force plus all marginally attached workers .....	8.7	12.2	13.5	8.7	10.9	11.2	12.0	12.6	13.5

NOTE: Marginally attached workers are persons who currently are neither working nor looking for work but indicate that they want and are available for a job and have looked for work sometime in the recent past. Discouraged workers, a subset of the marginally attached, have given a job-market related reason for not looking currently for a job. Persons employed part time for economic reasons are those who want and are available for full-time work but have had to settle for a

part-time schedule. For more information, see "BLS introduces new range of alternative unemployment measures," in the October 1995 issue of the Monthly Labor Review. Updated population controls are introduced annually with the release of January data. Seasonally adjusted household data have been revised to reflect updated seasonal adjustment factors.

Table A-13. Persons not in the labor force and multiple jobholders by sex, not seasonally adjusted

(Numbers in thousands)

Category	Total		Men		Women	
	Dec. 2007	Dec. 2008	Dec. 2007	Dec. 2008	Dec. 2007	Dec. 2008
<b>NOT IN THE LABOR FORCE</b>						
Total not in the labor force .....	79,451	80,686	30,680	31,543	48,771	49,143
Persons who currently want a job .....	4,398	5,180	2,039	2,432	2,359	2,748
Marginally attached to the labor force <sup>1</sup> .....	1,344	1,908	755	1,000	589	908
Reason not currently looking:						
Discouragement over job prospects <sup>2</sup> .....	363	642	238	367	125	276
Reasons other than discouragement <sup>3</sup> .....	981	1,266	516	634	464	632
<b>MULTIPLE JOBHOLDERS</b>						
Total multiple jobholders <sup>4</sup> .....	7,577	7,432	3,734	3,743	3,843	3,689
Percent of total employed .....	5.2	5.2	4.8	5.0	5.6	5.4
Primary job full time, secondary job part time .....	4,067	4,176	2,239	2,288	1,828	1,888
Primary and secondary jobs both part time .....	1,868	1,774	565	638	1,303	1,136
Primary and secondary jobs both full time .....	252	218	166	143	86	75
Hours vary on primary or secondary job .....	1,344	1,215	746	653	598	562

<sup>1</sup> Data refer to persons who have searched for work sometime during the prior 12 months and were available to take a job during the reference week.

<sup>2</sup> Includes thinks no work available, could not find work, lacks schooling or training, employer thinks too young or old, and other types of discrimination.

<sup>3</sup> Includes those who did not actively look for work in the prior 4 weeks for such reasons as school or family responsibilities, ill health, and transportation problems, as

well as a small number for which reason for nonparticipation was not determined.

<sup>4</sup> Includes persons who work part time on their primary job and full time on their secondary job(s), not shown separately.

NOTE: Updated population controls are introduced annually with the release of January data.

Table B-1. Employees on nonfarm payrolls by industry sector and selected industry detail

(In thousands)

Industry	Not seasonally adjusted				Seasonally adjusted						
	Dec. 2007	Oct. 2008	Nov. 2008 <sup>P</sup>	Dec. 2008 <sup>P</sup>	Dec. 2007	Aug. 2008	Sept. 2008	Oct. 2008	Nov. 2008 <sup>P</sup>	Dec. 2008 <sup>P</sup>	Change from: Nov. 2008-Dec. 2008 <sup>P</sup>
Total nonfarm .....	138,934	137,715	137,073	136,119	138,078	137,423	137,020	136,597	136,013	135,489	-524
Total private .....	116,232	114,843	114,081	113,247	115,745	114,909	114,525	114,087	113,506	112,975	-531
Goods-producing .....	21,875	21,363	21,024	20,485	21,976	21,367	21,250	21,049	20,867	20,616	-251
Natural resources and mining .....	735	806	807	799	739	788	795	796	803	802	-1
Logging .....	61.2	61.9	61.4	58.8	60.6	58.1	58.9	59.1	59.7	58.1	-1.6
Mining .....	674.0	743.6	746.0	739.8	677.9	729.6	736.2	737.3	743.0	744.2	1.2
Oil and gas extraction .....	152.6	166.3	167.2	168.5	153.1	164.1	165.8	166.2	167.4	168.8	1.4
Mining, except oil and gas <sup>1</sup> .....	221.4	240.3	237.2	230.3	225.2	233.8	234.1	234.5	235.3	234.7	-0.6
Coal mining .....	78.5	85.7	86.6	86.7	78.3	83.5	84.4	85.2	86.1	86.3	0.2
Support activities for mining .....	300.0	337.0	341.6	341.0	299.6	331.7	336.3	336.6	340.3	340.7	0.4
Construction .....	7,353	7,266	7,049	6,706	7,465	7,153	7,098	7,019	6,934	6,833	-101
Construction of buildings .....	1,691.9	1,617.5	1,573.7	1,516.9	1,702.4	1,612.8	1,592.1	1,573.9	1,554.6	1,528.6	-26.0
Residential building .....	899.5	833.5	813.2	778.0	902.0	831.9	823.3	809.7	800.8	781.6	-19.2
Nonresidential building .....	792.4	784.0	760.5	738.9	800.4	780.9	768.8	764.2	753.8	747.0	-6.8
Heavy and civil engineering construction .....	960.6	996.1	954.3	872.3	993.8	952.8	943.6	932.6	920.1	907.5	-12.6
Specialty trade contractors .....	4,700.4	4,652.4	4,520.9	4,316.5	4,768.4	4,587.8	4,562.5	4,512.6	4,458.9	4,397.0	-61.9
Residential specialty trade contractors .....	2,163.0	2,079.3	2,006.2	1,911.9	2,201.1	2,055.6	2,046.5	2,020.1	1,989.3	1,954.9	-34.4
Nonresidential specialty trade contractors .....	2,537.4	2,573.1	2,514.7	2,404.6	2,567.3	2,532.2	2,516.0	2,492.5	2,469.6	2,442.1	-27.5
Manufacturing .....	13,787	13,291	13,168	12,980	13,772	13,426	13,357	13,234	13,130	12,981	-149
Production workers .....	9,952	9,504	9,387	9,214	9,933	9,636	9,572	9,451	9,355	9,221	-134
Durable goods .....	8,755	8,359	8,283	8,152	8,739	8,482	8,433	8,336	8,259	8,145	-114
Production workers .....	6,240	5,855	5,783	5,662	6,220	5,980	5,930	5,834	5,765	5,659	-106
Wood products .....	505.3	457.9	443.5	428.6	507.2	467.6	462.2	453.5	443.2	431.4	-11.8
Nonmetallic mineral products .....	490.9	477.4	465.7	445.6	496.4	475.8	471.0	468.6	459.4	451.5	-7.9
Primary metals .....	451.8	441.0	434.6	427.0	452.2	443.0	442.7	440.6	434.4	427.7	-6.7
Fabricated metal products .....	1,565.6	1,515.2	1,495.3	1,463.0	1,562.7	1,534.3	1,524.2	1,507.6	1,488.9	1,460.6	-28.3
Machinery .....	1,191.2	1,182.0	1,171.0	1,163.7	1,191.0	1,193.0	1,187.2	1,182.8	1,171.4	1,164.5	-6.9
Computer and electronic products <sup>1</sup> .....	1,260.3	1,238.3	1,232.4	1,225.1	1,257.6	1,247.4	1,245.5	1,239.3	1,231.3	1,223.1	-8.2
Computer and peripheral equipment .....	186.0	184.8	184.2	183.8	185.4	185.4	185.3	185.0	184.0	183.3	-0.7
Communications equipment .....	129.7	132.1	129.3	127.9	129.0	131.2	131.7	131.3	129.0	127.3	-1.7
Semiconductors and electronic components .....	435.1	417.9	416.3	411.5	434.9	423.4	422.1	419.1	415.9	411.2	-4.7
Electronic instruments .....	444.2	441.7	441.2	440.9	443.7	444.7	444.5	442.6	441.5	440.8	-0.7
Electrical equipment and appliances .....	424.3	416.7	411.9	406.6	423.8	419.4	416.8	415.8	411.2	406.5	-4.7
Transportation equipment <sup>1</sup> .....	1,698.0	1,526.3	1,539.6	1,520.6	1,684.7	1,584.0	1,572.2	1,529.3	1,534.8	1,510.5	-24.3
Motor vehicles and parts <sup>2</sup> .....	974.1	834.2	825.7	808.7	962.6	866.2	850.1	838.3	822.5	801.1	-21.4
Furniture and related products .....	524.1	471.5	461.6	451.8	523.8	487.4	482.4	470.9	461.9	452.6	-9.3
Miscellaneous manufacturing .....	643.5	632.5	627.0	619.6	639.9	630.1	628.9	627.9	622.1	617.0	-5.1
Nondurable goods .....	5,032	4,932	4,885	4,828	5,033	4,944	4,924	4,898	4,871	4,836	-35
Production workers .....	3,712	3,649	3,604	3,552	3,713	3,656	3,642	3,617	3,590	3,562	-28
Food manufacturing .....	1,488.8	1,500.1	1,494.1	1,473.9	1,486.3	1,474.0	1,476.7	1,477.7	1,481.0	1,472.7	-8.3
Beverages and tobacco products .....	189.2	193.3	189.4	186.8	192.0	191.3	191.3	189.1	189.9	190.0	0.1
Textile mills .....	162.4	147.5	141.6	138.0	163.0	150.6	148.3	146.5	141.7	138.8	-2.9
Textile product mills .....	155.8	147.3	145.5	143.1	155.7	147.9	147.9	146.7	145.2	143.5	-1.7
Apparel .....	203.6	190.0	188.2	184.1	204.8	196.1	193.1	189.5	188.1	185.3	-2.8
Leather and allied products .....	33.9	34.6	34.4	34.0	33.7	35.1	35.0	34.4	34.1	34.0	-0.1
Paper and paper products .....	460.2	447.5	444.0	442.1	460.3	453.4	449.8	447.5	444.7	442.7	-2.0
Printing and related support activities .....	622.8	590.8	586.2	577.6	619.5	599.2	595.2	588.9	582.5	576.1	-6.4
Petroleum and coal products .....	109.2	115.2	114.4	111.4	111.7	114.1	114.2	114.0	114.6	114.3	-0.3
Chemicals .....	862.7	849.8	847.9	846.5	862.0	855.4	852.5	851.6	849.8	847.0	-2.8
Plastics and rubber products .....	743.3	715.7	699.5	690.1	744.2	726.4	720.0	711.7	699.4	692.0	-7.4

See footnotes at the end of table.

Table B-1. Employees on nonfarm payrolls by industry sector and selected industry detail—Continued

(In thousands)

Industry	Not seasonally adjusted				Seasonally adjusted						
	Dec. 2007	Oct. 2008	Nov. 2008 <sup>P</sup>	Dec. 2008 <sup>P</sup>	Dec. 2007	Aug. 2008	Sept. 2008	Oct. 2008	Nov. 2008 <sup>P</sup>	Dec. 2008 <sup>P</sup>	Change from: Nov. 2008-Dec. 2008 <sup>P</sup>
Service-providing .....	117,059	116,352	116,049	115,634	116,102	116,056	115,770	115,548	115,146	114,873	-273
Private service-providing .....	94,357	93,480	93,057	92,762	93,769	93,542	93,275	93,038	92,639	92,359	-280
Trade, transportation, and utilities .....	27,328	26,229	26,360	26,435	26,658	26,346	26,225	26,118	25,954	25,833	-121
Wholesale trade .....	6,085.1	5,987.4	5,950.7	5,917.7	6,072.9	6,007.1	5,999.5	5,972.2	5,939.4	5,909.4	-30.0
Durable goods .....	3,150.6	3,064.1	3,038.1	3,019.5	3,145.0	3,084.9	3,080.1	3,058.9	3,036.4	3,015.4	-21.0
Nondurable goods .....	2,094.3	2,076.6	2,068.3	2,054.6	2,089.3	2,075.2	2,070.0	2,066.6	2,058.9	2,052.4	-6.5
Electronic markets and agents and brokers .....	840.2	846.7	844.3	843.6	838.6	847.0	849.4	846.7	844.1	841.6	-2.5
Retail trade .....	16,085.9	15,179.2	15,387.6	15,506.9	15,487.8	15,274.7	15,199.1	15,132.1	15,032.1	14,965.5	-66.6
Motor vehicle and parts dealers <sup>1</sup> .....	1,898.9	1,823.3	1,774.7	1,739.5	1,909.3	1,853.2	1,837.4	1,809.8	1,779.7	1,754.7	-25.0
Automobile dealers .....	1,240.8	1,162.0	1,126.0	1,100.2	1,244.6	1,189.6	1,177.1	1,152.9	1,127.1	1,105.6	-21.5
Furniture and home furnishings stores .....	612.0	560.7	560.5	560.9	584.5	566.4	561.7	555.5	545.6	537.6	-8.0
Electronics and appliance stores .....	564.8	532.1	541.5	538.8	540.4	535.3	530.3	527.3	522.9	517.5	-5.4
Building material and garden supply stores .....	1,237.3	1,228.1	1,206.6	1,190.0	1,271.6	1,237.0	1,235.9	1,233.8	1,225.6	1,221.0	-4.6
Food and beverage stores .....	2,907.7	2,860.4	2,885.0	2,880.2	2,871.9	2,871.5	2,863.2	2,864.6	2,856.7	2,848.4	-8.3
Health and personal care stores .....	1,016.2	981.7	987.9	999.3	999.9	985.1	984.4	983.0	978.0	982.3	4.3
Gasoline stations .....	848.1	834.3	832.1	830.5	850.5	839.8	834.2	834.7	834.1	832.8	-1.3
Clothing and clothing accessories stores .....	1,674.4	1,484.2	1,536.2	1,595.4	1,508.6	1,495.8	1,482.9	1,478.2	1,457.2	1,453.2	-4.0
Sporting goods, hobby, book, and music stores .....	721.4	656.6	667.8	681.0	661.6	659.5	650.1	648.1	635.5	629.2	-6.3
General merchandise stores <sup>1</sup> .....	3,223.4	2,910.4	3,068.8	3,159.5	2,976.7	2,941.1	2,929.8	2,911.7	2,919.1	2,922.1	3.0
Department stores .....	1,756.0	1,481.5	1,591.0	1,648.8	1,568.4	1,507.0	1,494.2	1,477.6	1,475.0	1,472.6	-2.4
Miscellaneous store retailers .....	895.7	865.2	862.7	861.9	866.3	856.4	855.5	854.5	846.5	835.7	-10.8
Nonstore retailers .....	486.0	442.2	463.8	469.9	446.5	433.6	433.7	430.9	431.2	431.0	-2
Transportation and warehousing .....	4,600.9	4,499.4	4,457.8	4,445.7	4,539.9	4,505.1	4,465.9	4,450.2	4,417.7	4,393.8	-23.9
Air transportation .....	500.8	483.2	482.2	477.8	502.1	490.9	487.4	484.3	483.0	479.2	-3.8
Rail transportation .....	232.4	232.2	232.2	232.2	232.5	230.6	229.2	231.3	232.0	232.0	.0
Water transportation .....	63.4	60.9	58.5	57.0	64.4	60.7	60.3	59.7	58.9	57.9	-1.0
Truck transportation .....	1,424.6	1,399.1	1,374.7	1,349.8	1,423.1	1,400.1	1,387.3	1,379.0	1,366.4	1,350.8	-15.6
Transit and ground passenger transportation .....	427.9	421.7	420.5	417.1	411.8	416.5	408.2	406.6	405.2	402.8	-2.4
Pipeline transportation .....	40.9	43.3	44.1	44.2	40.8	43.0	43.7	43.8	44.1	44.2	.1
Scenic and sightseeing transportation .....	27.0	31.4	26.0	24.6	31.3	30.9	29.5	30.2	29.2	28.7	-5
Support activities for transportation .....	589.2	591.0	578.2	575.6	587.1	590.8	587.2	585.8	577.6	574.9	-2.7
Couriers and messengers .....	625.1	576.4	579.1	610.6	588.1	585.8	580.2	578.6	572.6	575.8	3.2
Warehousing and storage .....	669.6	660.2	662.3	656.8	658.7	655.8	652.9	650.9	648.7	647.5	-1.2
Utilities .....	556.3	562.7	564.1	564.4	557.1	559.2	560.8	563.2	564.5	564.4	-.1
Information .....	3,032	2,960	2,955	2,942	3,018	2,984	2,978	2,972	2,953	2,933	-20
Publishing industries, except Internet .....	893.8	864.4	858.3	852.7	889.7	870.4	867.0	863.7	855.3	849.9	-5.4
Motion picture and sound recording industries .....	381.7	374.0	376.3	374.1	376.3	379.4	379.4	383.1	378.2	371.1	-7.1
Broadcasting, except Internet .....	324.3	318.3	318.6	314.7	321.9	318.4	317.7	317.9	317.3	313.4	-3.9
Telecommunications .....	1,029.6	1,004.4	1,003.6	1,002.0	1,026.8	1,016.0	1,014.4	1,008.0	1,003.7	1,000.2	-3.5
Data processing, hosting and related services .....	273.7	266.4	265.6	267.1	273.5	268.0	267.4	267.3	266.0	266.5	.5
Other information services .....	128.8	132.8	132.5	131.7	129.3	131.7	131.7	132.3	132.5	132.1	-.4
Financial activities .....	8,249	8,140	8,096	8,090	8,252	8,196	8,173	8,146	8,118	8,104	-14
Finance and insurance .....	6,113.4	6,036.1	6,015.5	6,009.8	6,111.2	6,075.1	6,062.2	6,044.9	6,024.7	6,015.1	-9.6
Monetary authorities - central bank .....	20.6	20.1	20.5	20.2	20.7	20.8	20.9	20.4	20.6	20.4	-.2
Credit intermediation and related activities <sup>1</sup> .....	2,827.8	2,764.0	2,746.0	2,746.4	2,829.2	2,784.7	2,785.3	2,770.7	2,755.2	2,751.0	-4.2
Depository credit intermediation <sup>1</sup> .....	1,824.7	1,804.3	1,796.2	1,797.8	1,824.6	1,813.2	1,808.9	1,805.2	1,800.9	1,799.6	-1.3
Commercial banking .....	1,345.2	1,332.9	1,327.8	1,328.3	1,345.9	1,339.4	1,337.2	1,334.3	1,331.5	1,330.2	-1.3
Securities, commodity contracts, investments .....	855.7	847.0	844.3	842.6	856.7	860.9	851.5	847.5	845.7	845.9	.2
Insurance carriers and related activities .....	2,320.9	2,316.4	2,316.4	2,311.7	2,316.8	2,320.3	2,316.2	2,317.5	2,314.7	2,309.5	-5.2
Funds, trusts, and other financial vehicles .....	88.4	88.6	88.3	88.9	87.8	88.4	88.3	88.8	88.5	88.3	-.2
Real estate and rental and leasing .....	2,135.6	2,103.6	2,080.3	2,080.0	2,140.6	2,121.3	2,110.7	2,100.6	2,093.0	2,088.7	-4.3
Real estate .....	1,476.3	1,457.2	1,446.3	1,450.7	1,476.4	1,465.6	1,457.9	1,454.9	1,452.6	1,451.6	-1.0
Rental and leasing services .....	628.5	614.8	602.4	596.9	633.6	623.8	620.6	613.8	608.5	604.8	-3.7
Lessors of nonfinancial intangible assets .....	30.8	31.6	31.6	32.4	30.6	31.9	32.2	31.9	31.9	32.3	.4

See footnotes at the end of table.



Table B-1. Employees on nonfarm payrolls by industry sector and selected industry detail—Continued

(In thousands)

Industry	Not seasonally adjusted				Seasonally adjusted						Change from: Nov. 2008-Dec. 2008 <sup>P</sup>
	Dec. 2007	Oct. 2008	Nov. 2008 <sup>P</sup>	Dec. 2008 <sup>P</sup>	Dec. 2007	Aug. 2008	Sept. 2008	Oct. 2008	Nov. 2008 <sup>P</sup>	Dec. 2008 <sup>P</sup>	
Professional and business services .....	18,163	17,929	17,664	17,438	18,131	17,854	17,789	17,708	17,563	17,450	-113
Professional and technical services <sup>1</sup> .....	7,845.9	7,841.1	7,828.6	7,847.8	7,820.5	7,859.5	7,860.8	7,864.4	7,845.9	7,827.8	-18.1
Legal services .....	1,176.0	1,167.8	1,165.6	1,169.0	1,173.9	1,166.6	1,166.2	1,166.9	1,165.8	1,167.1	1.3
Accounting and bookkeeping services .....	1,003.3	906.1	915.4	974.1	993.3	977.7	975.3	971.3	968.3	964.9	-3.4
Architectural and engineering services .....	1,456.1	1,465.0	1,453.1	1,435.1	1,460.4	1,464.2	1,457.0	1,454.1	1,447.3	1,440.6	-6.7
Computer systems design and related services .....	1,397.4	1,436.9	1,439.3	1,434.8	1,391.4	1,424.5	1,427.4	1,430.4	1,431.4	1,428.5	-2.9
Management and technical consulting services .....	1,004.3	1,036.4	1,039.0	1,035.4	994.3	1,019.8	1,029.6	1,028.9	1,027.8	1,026.0	-1.8
Management of companies and enterprises .....	1,860.8	1,822.8	1,808.8	1,800.6	1,847.8	1,832.1	1,823.7	1,818.3	1,805.6	1,797.2	-8.4
Administrative and waste services .....	8,456.3	8,264.6	8,026.6	7,789.4	8,462.8	8,162.7	8,104.6	8,025.3	7,911.4	7,824.6	-86.8
Administrative and support services <sup>1</sup> .....	8,094.1	7,891.6	7,657.2	7,425.3	8,099.3	7,793.5	7,735.8	7,654.8	7,542.3	7,459.0	-83.3
Employment services <sup>1</sup> .....	3,634.1	3,334.4	3,177.2	3,031.1	3,566.9	3,285.8	3,236.2	3,168.2	3,068.1	2,987.5	-80.6
Temporary help services .....	2,640.3	2,387.4	2,254.4	2,114.1	2,578.5	2,353.5	2,308.6	2,255.1	2,169.4	2,088.5	-80.9
Business support services .....	817.7	793.0	797.4	797.9	803.7	785.6	787.7	786.8	788.9	783.6	-5.3
Services to buildings and dwellings .....	1,788.9	1,897.8	1,842.0	1,757.2	1,872.0	1,861.8	1,855.9	1,849.1	1,839.9	1,842.3	2.4
Waste management and remediation services .....	362.2	373.0	369.4	364.1	363.5	369.2	368.8	370.5	369.1	365.6	-3.5
Education and health services .....	18,741	19,207	19,281	19,265	18,568	18,997	18,993	19,012	19,059	19,104	45
Educational services .....	3,124.9	3,236.2	3,262.0	3,209.3	2,984.5	3,126.6	3,082.3	3,066.9	3,074.1	3,081.1	7.0
Health care and social assistance .....	15,616.5	15,971.2	16,018.8	16,055.3	15,583.2	15,870.8	15,910.5	15,945.4	15,985.2	16,022.7	37.5
Health care <sup>3</sup> .....	13,133.9	13,438.0	13,470.7	13,503.7	13,109.6	13,363.4	13,388.0	13,417.1	13,449.6	13,481.2	31.6
Ambulatory health care services <sup>1</sup> .....	5,583.3	5,748.4	5,761.3	5,775.6	5,566.0	5,703.8	5,721.1	5,732.4	5,746.9	5,761.1	14.2
Offices of physicians .....	2,246.2	2,302.6	2,309.6	2,319.0	2,235.6	2,282.7	2,289.7	2,295.2	2,301.5	2,307.1	5.6
Outpatient care centers .....	513.9	521.6	524.2	522.0	513.0	522.2	519.9	521.5	522.8	521.7	-1.1
Home health care services .....	933.2	975.6	980.5	983.8	930.9	963.4	967.0	972.0	977.7	982.7	5.0
Hospitals .....	4,574.5	4,694.5	4,702.6	4,713.6	4,572.4	4,669.1	4,677.0	4,689.7	4,699.4	4,711.3	11.9
Nursing and residential care facilities <sup>1</sup> .....	2,976.1	2,995.1	3,006.8	3,014.5	2,971.2	2,990.5	2,989.9	2,995.0	3,003.3	3,008.8	5.5
Nursing care facilities .....	1,611.3	1,607.1	1,610.4	1,614.9	1,608.2	1,607.4	1,603.5	1,606.1	1,607.9	1,611.1	3.2
Social assistance <sup>1</sup> .....	2,482.6	2,533.2	2,548.1	2,551.6	2,473.6	2,507.4	2,522.5	2,528.3	2,535.6	2,541.5	5.9
Child day care services .....	867.7	871.2	875.3	873.6	857.1	850.5	861.5	860.1	862.1	862.6	.5
Leisure and hospitality .....	13,358	13,490	13,213	13,151	13,635	13,639	13,587	13,557	13,490	13,468	-22
Arts, entertainment, and recreation .....	1,860.7	1,946.8	1,834.4	1,827.1	2,010.3	2,004.0	1,988.7	1,993.3	1,982.0	1,979.1	-2.9
Performing arts and spectator sports .....	416.7	425.8	410.7	404.7	429.9	429.9	427.6	429.3	422.4	420.5	-1.9
Museums, historical sites, zoos, and parks .....	125.3	130.0	125.2	122.2	131.5	131.7	130.3	129.5	129.5	129.3	-.2
Amusements, gambling, and recreation .....	1,318.7	1,391.0	1,298.5	1,300.2	1,448.9	1,439.4	1,430.8	1,434.5	1,430.1	1,429.3	-.8
Accommodation and food services .....	11,496.9	11,543.6	11,378.8	11,324.2	11,624.7	11,634.6	11,598.3	11,564.1	11,507.9	11,488.7	-19.2
Accommodation .....	1,803.0	1,800.8	1,707.1	1,707.1	1,858.1	1,824.9	1,810.6	1,802.9	1,767.7	1,768.9	1.2
Food services and drinking places .....	9,693.9	9,742.8	9,672.1	9,617.1	9,766.6	9,809.7	9,787.7	9,761.2	9,740.2	9,719.8	-20.4
Other services .....	5,486	5,525	5,488	5,441	5,507	5,526	5,530	5,525	5,502	5,467	-35
Repair and maintenance .....	1,246.5	1,228.8	1,208.6	1,196.1	1,255.5	1,233.9	1,232.7	1,228.0	1,217.1	1,208.1	-9.0
Personal and laundry services .....	1,304.3	1,315.2	1,304.6	1,306.4	1,306.9	1,318.5	1,319.4	1,315.1	1,310.4	1,310.7	.3
Membership associations and organizations .....	2,935.2	2,981.2	2,974.9	2,938.1	2,944.4	2,973.6	2,977.5	2,982.2	2,974.8	2,947.7	-27.1
Government .....	22,702	22,872	22,992	22,872	22,333	22,514	22,495	22,510	22,507	22,514	7
Federal .....	2,740	2,767	2,758	2,763	2,735	2,748	2,750	2,758	2,757	2,755	-2
Federal, except U.S. Postal Service .....	1,960.8	2,043.8	2,045.7	2,047.5	1,972.3	2,025.2	2,033.6	2,045.3	2,052.7	2,056.7	4.0
U.S. Postal Service .....	779.1	723.3	712.1	715.7	763.1	722.4	716.8	712.8	704.3	698.4	-5.9
State government .....	5,250	5,350	5,379	5,323	5,153	5,210	5,206	5,208	5,215	5,221	6
State government education .....	2,447.5	2,535.6	2,564.1	2,509.4	2,332.5	2,378.8	2,378.8	2,378.4	2,384.9	2,389.4	4.5
State government, excluding education .....	2,802.6	2,814.6	2,815.1	2,813.8	2,820.9	2,831.2	2,826.7	2,829.2	2,829.9	2,831.6	1.7
Local government .....	14,712	14,755	14,855	14,786	14,445	14,556	14,539	14,544	14,535	14,538	3
Local government education .....	8,360.4	8,302.2	8,393.8	8,371.7	8,016.5	8,058.6	8,043.7	8,052.6	8,044.1	8,041.9	-2.2
Local government, excluding education .....	6,351.9	6,453.2	6,461.3	6,414.3	6,428.2	6,497.4	6,495.1	6,491.8	6,490.7	6,496.3	5.6

<sup>1</sup> Includes other industries, not shown separately.<sup>2</sup> Includes motor vehicles, motor vehicle bodies and trailers, and motor vehicle parts.<sup>3</sup> Includes ambulatory health care services, hospitals, and nursing and residential care facilities.<sup>P</sup> = preliminary.

NOTE: Data reflect the conversion to the 2007 version of the North

American Industry Classification System (NAICS) as the basis for the assignment and tabulation of economic data by industry, replacing NAICS 2002. See <http://www.bls.gov/ces/cesnaics07.htm> for more details.

Table B-2. Average weekly hours of production and nonsupervisory workers<sup>1</sup> on private nonfarm payrolls by industry sector and selected industry detail

Industry	Not seasonally adjusted				Seasonally adjusted						Change from: Nov. 2008- Dec. 2008 <sup>P</sup>
	Dec. 2007	Oct. 2008	Nov. 2008 <sup>P</sup>	Dec. 2008 <sup>P</sup>	Dec. 2007	Aug. 2008	Sept. 2008	Oct. 2008	Nov. 2008 <sup>P</sup>	Dec. 2008 <sup>P</sup>	
Total private .....	34.1	33.6	33.7	33.3	33.8	33.7	33.6	33.5	33.5	33.3	-0.2
Goods-producing .....	40.7	40.2	39.8	39.5	40.5	40.3	39.9	39.8	39.6	39.3	-.3
Natural resources and mining .....	45.8	45.2	44.9	44.0	45.8	45.3	44.5	44.6	44.5	44.0	-.5
Construction .....	38.6	38.8	37.8	37.3	39.0	38.7	38.4	38.1	37.8	37.8	.0
Manufacturing .....	41.6	40.7	40.5	40.3	41.1	40.9	40.5	40.4	40.3	39.9	-.4
Overtime hours .....	4.3	3.6	3.4	3.2	4.0	3.7	3.5	3.5	3.3	3.0	-.3
Durable goods .....	41.8	40.8	40.6	40.5	41.3	41.2	40.7	40.6	40.4	40.0	-.4
Overtime hours .....	4.4	3.5	3.2	3.1	4.0	3.7	3.5	3.4	3.1	2.9	-.2
Wood products .....	39.4	38.2	38.3	37.5	39.2	38.9	38.4	38.1	38.0	37.4	-.6
Nonmetallic mineral products .....	41.1	42.5	41.4	41.0	41.5	42.3	42.0	41.9	41.5	41.6	.1
Primary metals .....	42.8	41.6	40.8	40.2	42.2	42.7	42.1	41.4	40.6	39.9	-.7
Fabricated metal products .....	42.1	41.1	40.8	40.4	41.6	41.3	41.0	40.7	40.5	40.0	-.5
Machinery .....	43.5	42.1	41.8	41.5	42.9	42.7	42.2	41.9	41.5	41.0	-.5
Computer and electronic products .....	41.4	40.9	41.5	41.3	40.5	41.0	40.9	40.8	41.1	40.5	-.6
Electrical equipment and appliances .....	42.7	40.8	40.8	41.0	41.6	41.0	41.0	40.5	40.3	40.0	-.3
Transportation equipment .....	42.9	41.6	40.9	41.5	42.1	41.8	40.8	41.3	40.9	40.8	-.1
Motor vehicles and parts <sup>2</sup> .....	42.3	40.7	40.0	40.5	41.6	40.4	40.9	40.6	40.2	39.9	-.3
Furniture and related products .....	39.9	37.3	37.2	37.8	39.1	38.1	37.5	37.4	37.3	37.2	-.1
Miscellaneous manufacturing .....	39.3	38.7	38.8	39.1	38.8	39.5	38.8	38.8	38.8	38.8	.0
Nondurable goods .....	41.3	40.4	40.5	40.1	40.8	40.4	40.2	40.2	40.1	39.7	-.4
Overtime hours .....	4.2	3.8	3.7	3.3	4.0	3.7	3.6	3.6	3.5	3.2	-.3
Food manufacturing .....	41.0	40.8	40.9	40.0	40.4	40.5	40.4	40.4	40.3	39.5	-.8
Beverages and tobacco products .....	40.3	37.6	38.4	37.3	40.8	38.2	38.2	38.0	38.1	37.6	-.5
Textile mills .....	41.1	38.3	38.3	37.5	40.2	39.5	39.0	38.2	37.9	36.8	-1.1
Textile product mills .....	40.7	37.7	37.9	37.7	39.9	38.8	38.2	37.9	37.8	37.2	-.6
Apparel .....	37.5	36.2	37.1	37.2	37.5	36.4	36.0	36.2	36.8	37.0	.2
Leather and allied products .....	40.0	36.9	36.0	37.2	39.1	37.6	37.5	37.0	36.2	36.5	.3
Paper and paper products .....	44.6	42.5	42.0	41.9	44.0	43.0	42.4	42.2	41.7	41.3	-.4
Printing and related support activities .....	39.3	38.9	38.8	38.8	38.8	38.3	38.3	38.5	38.4	38.3	-.1
Petroleum and coal products .....	43.1	46.1	45.2	44.5	44.0	45.5	45.3	45.3	44.6	45.2	.6
Chemicals .....	41.8	41.4	41.6	41.5	41.5	41.5	41.3	41.5	41.3	41.2	-.1
Plastics and rubber products .....	42.0	40.7	40.7	40.7	41.4	41.0	40.8	40.6	40.5	40.2	-.3
Private service-providing .....	32.7	32.2	32.5	32.1	32.4	32.4	32.3	32.3	32.3	32.2	-.1
Trade, transportation, and utilities .....	33.7	33.0	33.0	33.0	33.3	33.2	33.2	33.1	33.0	32.9	-.1
Wholesale trade .....	38.8	38.2	38.5	37.9	38.3	38.3	38.1	38.2	38.1	38.0	-.1
Retail trade .....	30.5	29.8	29.7	29.9	30.1	30.0	30.1	29.9	29.8	29.7	-.1
Transportation and warehousing .....	37.6	36.2	36.3	36.5	36.8	36.4	36.3	36.3	36.0	36.3	.3
Utilities .....	42.7	42.6	42.9	42.7	42.8	42.2	42.6	42.5	42.5	42.8	.3
Information .....	36.7	36.9	37.4	36.8	36.3	36.8	36.9	36.9	37.0	37.0	.0
Financial activities .....	36.4	35.7	36.6	35.7	35.8	36.1	36.0	35.9	36.0	35.9	-.1
Professional and business services .....	35.2	35.0	35.3	34.6	34.8	34.9	34.8	34.9	35.0	34.7	-.3
Education and health services .....	32.8	32.4	32.7	32.3	32.6	32.6	32.5	32.5	32.5	32.4	-.1
Leisure and hospitality .....	25.3	25.0	25.0	24.6	25.3	25.2	25.2	25.1	25.1	25.0	-.1
Other services .....	31.0	30.7	30.9	30.5	30.8	30.9	30.8	30.7	30.7	30.6	-.1

<sup>1</sup> Data relate to production workers in natural resources and mining and manufacturing, construction workers in construction, and nonsupervisory workers in the service-providing industries. These groups account for approximately four-fifths of the total employment on private nonfarm payrolls.

<sup>2</sup> Includes motor vehicles, motor vehicle bodies and trailers, and motor vehicle parts.

<sup>P</sup> = preliminary.

NOTE: Data reflect the conversion to the 2007 version of the North American Industry Classification System (NAICS) as the basis for the assignment and tabulation of economic data by industry, replacing NAICS 2002. See <http://www.bls.gov/ces/cesnaics07.htm> for more details.

Table B-3. Average hourly and weekly earnings of production and nonsupervisory workers<sup>1</sup> on private nonfarm payrolls by industry sector and selected industry detail

Industry	Average hourly earnings				Average weekly earnings			
	Dec. 2007	Oct. 2008	Nov. 2008 <sup>P</sup>	Dec. 2008 <sup>P</sup>	Dec. 2007	Oct. 2008	Nov. 2008 <sup>P</sup>	Dec. 2008 <sup>P</sup>
Total private .....	\$17.75	\$18.23	\$18.38	\$18.37	\$605.28	\$612.53	\$619.41	\$611.72
Seasonally adjusted .....	17.70	18.23	18.31	18.36	598.26	610.71	613.39	611.39
Goods-producing .....	18.96	19.59	19.64	19.69	771.67	787.52	781.67	777.76
Natural resources and mining .....	21.68	22.96	23.08	22.99	992.94	1,037.79	1,036.29	1,011.56
Construction .....	21.38	22.27	22.32	22.48	825.27	864.08	843.70	838.50
Manufacturing .....	17.51	17.84	17.94	18.03	728.42	726.09	726.57	726.61
Durable goods .....	18.46	18.78	18.90	19.01	771.63	766.22	767.34	769.91
Wood products .....	13.88	14.41	14.45	14.58	546.87	550.46	553.44	546.75
Nonmetallic mineral products .....	16.94	16.93	16.74	16.58	696.23	719.53	693.04	679.78
Primary metals .....	19.73	20.00	20.05	20.08	844.44	832.00	818.04	807.22
Fabricated metal products .....	16.82	17.18	17.22	17.38	708.12	706.10	702.58	702.15
Machinery .....	17.95	18.09	18.21	18.29	780.83	761.59	761.18	759.04
Computer and electronic products .....	20.33	21.46	21.54	21.58	841.66	877.71	893.91	891.25
Electrical equipment and appliances .....	15.73	15.85	15.83	15.98	671.67	646.68	645.86	655.18
Transportation equipment .....	23.46	24.01	24.26	24.37	1,006.43	998.82	992.23	1,011.36
Furniture and related products .....	14.50	14.55	14.58	14.63	578.55	542.72	542.38	553.01
Miscellaneous manufacturing .....	15.00	15.33	15.44	15.56	589.50	593.27	599.07	608.40
Nondurable goods .....	15.90	16.31	16.39	16.44	656.67	658.92	663.80	659.24
Food manufacturing .....	13.70	14.09	14.21	14.26	561.70	574.87	581.19	570.40
Beverages and tobacco products .....	19.69	19.24	19.72	19.67	793.51	723.42	757.25	733.69
Textile mills .....	13.13	13.72	13.88	13.89	539.64	525.48	531.60	520.88
Textile product mills .....	11.75	11.62	11.63	11.83	478.23	438.07	440.78	445.99
Apparel .....	11.28	11.38	11.42	11.38	423.00	411.96	423.68	423.34
Leather and allied products .....	12.12	13.14	13.26	13.30	484.80	484.87	477.36	494.76
Paper and paper products .....	18.71	19.06	18.94	19.13	834.47	810.05	795.48	801.55
Printing and related support activities .....	16.65	17.00	17.01	17.17	654.35	661.30	659.99	666.20
Petroleum and coal products .....	25.52	28.86	28.53	28.13	1,099.91	1,330.45	1,289.56	1,251.79
Chemicals .....	19.57	19.71	20.02	19.86	818.03	815.99	832.83	824.19
Plastics and rubber products .....	15.65	16.01	16.03	16.10	657.30	651.61	652.42	655.27
Private service-providing .....	17.45	17.89	18.07	18.06	570.62	576.06	587.28	579.73
Trade, transportation, and utilities .....	15.89	16.26	16.30	16.17	535.49	536.58	537.90	533.61
Wholesale trade .....	20.10	20.21	20.40	20.27	779.88	772.02	785.40	768.23
Retail trade .....	12.64	12.91	12.92	12.83	385.52	384.72	383.72	383.62
Transportation and warehousing .....	18.04	18.53	18.56	18.55	678.30	670.79	673.73	677.08
Utilities .....	28.61	29.00	29.15	29.23	1,221.65	1,235.40	1,250.54	1,248.12
Information .....	24.34	25.01	25.14	24.96	893.28	922.87	940.24	918.53
Financial activities .....	19.97	20.42	20.54	20.51	726.91	728.99	751.76	732.21
Professional and business services .....	20.67	21.39	22.00	22.09	727.58	748.65	776.60	764.31
Education and health services .....	18.51	18.92	18.96	19.08	607.13	613.01	619.99	616.28
Leisure and hospitality .....	10.77	10.92	10.93	11.04	272.48	273.00	273.25	271.58
Other services .....	15.75	15.91	15.97	16.02	488.25	488.44	493.47	488.61

<sup>1</sup> See footnote 1, table B-2.

P = preliminary.

NOTE: Data reflect the conversion to the 2007 version of the North American Industry Classification System (NAICS) as the basis for

the assignment and tabulation of economic data by industry, replacing NAICS 2002. See <http://www.bls.gov/ces/cesnaics07.htm> for more details.

**Table B-4. Average hourly earnings of production and nonsupervisory workers<sup>1</sup> on private nonfarm payrolls by industry sector and selected industry detail, seasonally adjusted**

Industry	Dec. 2007	Aug. 2008	Sept. 2008	Oct. 2008	Nov. 2008 <sup>P</sup>	Dec. 2008 <sup>P</sup>	Percent change from: Nov. 2008-Dec. 2008 <sup>P</sup>
Total Private:							
Current dollars .....	\$17.70	\$18.14	\$18.17	\$18.23	\$18.31	\$18.36	0.3
Constant (1982) dollars <sup>2</sup> .....	8.27	8.17	8.19	8.32	8.54	N.A.	( <sup>3</sup> )
Goods-producing .....	18.90	19.41	19.47	19.52	19.60	19.63	.2
Natural resources and mining .....	21.54	23.02	23.17	23.06	23.05	22.85	-9
Construction .....	21.30	22.01	22.09	22.15	22.27	22.37	.4
Manufacturing .....	17.41	17.76	17.79	17.86	17.94	17.92	-.1
Excluding overtime <sup>4</sup> .....	16.60	16.99	17.05	17.12	17.23	17.27	.2
Durable goods .....	18.33	18.70	18.72	18.80	18.89	18.88	-.1
Nondurable goods .....	15.86	16.18	16.27	16.34	16.39	16.39	.0
Private service-providing .....	17.39	17.82	17.85	17.92	18.00	18.06	.3
Trade, transportation, and utilities .....	16.00	16.26	16.23	16.27	16.31	16.33	.1
Wholesale trade .....	19.93	20.29	20.23	20.23	20.25	20.22	-.1
Retail trade .....	12.81	12.93	12.93	12.92	12.98	13.00	.2
Transportation and warehousing .....	18.07	18.47	18.45	18.55	18.56	18.59	.2
Utilities .....	28.52	28.88	28.84	28.92	29.00	29.12	.4
Information .....	24.18	24.91	24.86	24.95	25.06	25.00	-.2
Financial activities .....	19.91	20.38	20.42	20.44	20.42	20.55	.6
Professional and business services .....	20.46	21.30	21.40	21.56	21.83	22.03	.9
Education and health services .....	18.48	18.85	18.91	18.95	18.99	19.04	.3
Leisure and hospitality .....	10.65	10.89	10.89	10.91	10.90	10.92	.2
Other services .....	15.71	15.92	15.93	15.95	15.97	16.00	.2

<sup>1</sup> See footnote 1, table B-2.

<sup>2</sup> The Consumer Price Index for Urban Wage Earners and Clerical Workers (CPI-W) is used to deflate this series.

<sup>3</sup> Change was 2.6 percent from Oct. 2008 to Nov. 2008, the latest month available.

<sup>4</sup> Derived by assuming that overtime hours are paid at the rate of time and one-half.

N.A. = not available.

<sup>P</sup> = preliminary.

NOTE: Data reflect the conversion to the 2007 version of the North American Industry Classification System (NAICS) as the basis for the assignment and tabulation of economic data by industry, replacing NAICS 2002. See <http://www.bls.gov/ces/cesnaics07.htm> for more details.

**Table B-5. Indexes of aggregate weekly hours of production and nonsupervisory workers<sup>1</sup> on private nonfarm payrolls by industry sector and selected industry detail**

(2002=100)

Industry	Not seasonally adjusted				Seasonally adjusted						Percent change from: Nov. 2008- Dec. 2008 <sup>P</sup>
	Dec. 2007	Oct. 2008	Nov. 2008 <sup>P</sup>	Dec. 2008 <sup>P</sup>	Dec. 2007	Aug. 2008	Sept. 2008	Oct. 2008	Nov. 2008 <sup>P</sup>	Dec. 2008 <sup>P</sup>	
Total private .....	109.2	106.4	106.0	103.8	107.8	106.8	106.1	105.3	104.7	103.5	-1.1
Goods-producing .....	100.6	96.6	93.8	90.0	100.6	96.9	95.3	93.9	92.4	90.3	-2.3
Natural resources and mining .....	135.1	145.8	144.6	139.4	135.6	143.0	141.9	141.5	142.1	139.8	-1.6
Construction .....	109.4	109.2	102.8	95.3	112.7	106.8	104.9	102.8	100.5	98.9	-1.6
Manufacturing .....	95.0	88.8	87.3	85.2	93.7	90.5	89.0	87.6	86.5	84.4	-2.4
Durable goods .....	98.0	89.7	88.2	86.1	96.5	92.6	90.7	89.0	87.5	85.0	-2.9
Wood products .....	86.9	76.2	73.9	69.7	86.9	79.4	77.4	75.2	73.4	70.1	-4.5
Nonmetallic mineral products .....	92.4	95.4	89.8	84.6	94.4	94.3	92.4	92.0	89.2	87.6	-1.8
Primary metals .....	90.9	85.8	82.4	78.9	89.6	88.7	87.2	85.2	81.9	78.4	-4.3
Fabricated metal products .....	106.3	99.4	97.1	94.0	104.8	101.6	100.0	97.9	95.9	92.8	-3.2
Machinery .....	106.7	100.7	98.1	96.7	105.0	103.7	101.4	100.1	97.4	95.6	-1.8
Computer and electronic products .....	104.3	99.5	100.1	98.2	101.7	101.3	100.2	99.1	98.8	96.0	-2.8
Electrical equipment and appliances .....	92.0	87.3	86.2	85.1	89.2	88.0	87.5	86.3	84.8	83.0	-2.1
Transportation equipment .....	98.0	81.3	81.4	80.9	95.2	86.4	83.5	81.1	81.0	78.9	-2.6
Motor vehicles and parts <sup>2</sup> .....	84.1	66.5	64.9	63.7	81.6	69.2	68.8	66.8	64.8	62.0	-4.3
Furniture and related products .....	86.2	71.6	69.0	68.4	84.2	75.5	73.9	71.6	69.6	67.8	-2.6
Miscellaneous manufacturing .....	92.7	89.1	88.1	87.8	91.0	90.9	89.0	88.7	87.4	86.9	-6
Nondurable goods .....	90.3	86.9	86.0	83.9	89.3	87.0	86.3	85.7	84.8	83.3	-1.8
Food manufacturing .....	102.7	103.0	102.7	98.9	101.0	100.2	100.2	100.2	99.9	97.5	-2.4
Beverages and tobacco products .....	89.1	89.8	89.9	86.3	92.3	87.6	87.8	87.6	88.9	88.7	-2
Textile mills .....	54.8	46.1	43.7	41.6	53.8	48.9	47.3	45.5	43.4	41.2	-5.1
Textile product mills .....	77.7	69.1	67.7	65.8	76.4	70.9	70.2	69.0	67.6	65.5	-3.1
Apparel .....	59.7	54.2	54.9	53.7	60.3	56.3	54.7	54.0	54.3	53.9	-7
Leather and allied products .....	74.0	71.5	68.5	69.8	71.5	74.3	73.4	70.9	68.4	68.5	.1
Paper and paper products .....	89.0	83.5	81.9	81.4	87.9	85.3	83.7	83.1	81.6	80.4	-1.5
Printing and related support activities .....	92.4	86.6	85.8	84.2	90.6	86.6	86.3	85.3	84.2	82.8	-1.7
Petroleum and coal products .....	90.3	103.2	99.0	92.6	95.1	102.4	102.0	99.8	97.9	97.9	.0
Chemicals .....	96.2	94.3	94.3	93.7	95.6	95.5	94.6	95.0	94.3	93.3	-1.1
Plastics and rubber products .....	91.2	84.6	82.5	81.2	90.1	87.1	85.7	84.0	82.2	80.6	-1.9
Private service-providing .....	111.4	108.9	109.3	107.6	109.7	109.6	108.9	108.6	108.1	107.4	-6
Trade, transportation, and utilities .....	109.4	102.5	103.1	103.5	105.1	103.6	103.1	102.3	101.2	100.4	-8
Wholesale trade .....	112.8	109.3	109.4	107.0	111.1	110.0	109.1	108.9	108.0	107.1	-8
Retail trade .....	107.2	98.3	99.6	101.2	101.4	99.7	99.5	98.3	97.1	96.4	-7
Transportation and warehousing .....	113.6	107.4	106.4	106.7	109.5	107.7	106.7	106.3	104.3	104.6	.3
Utilities .....	97.1	99.1	99.8	99.2	97.5	97.4	98.8	98.9	98.9	99.8	.9
Information .....	101.3	99.8	101.1	99.4	99.7	100.2	100.3	100.4	100.0	99.5	-5
Financial activities .....	110.0	107.5	109.5	106.6	108.2	109.2	108.6	108.1	108.0	107.4	-6
Professional and business services .....	118.1	115.9	114.8	110.8	116.7	115.0	114.2	113.9	113.0	111.2	-1.6
Education and health services .....	115.8	117.5	119.0	117.5	114.1	116.9	116.6	116.7	116.9	116.9	.0
Leisure and hospitality .....	109.2	109.3	106.9	104.7	111.6	111.4	111.0	110.3	109.8	109.1	-6
Other services .....	99.3	99.5	99.4	97.1	99.2	100.0	99.8	99.5	99.0	98.1	-9

<sup>1</sup> See footnote 1, table B-2.<sup>2</sup> Includes motor vehicles, motor vehicle bodies and trailers, and motor vehicle parts.<sup>P</sup> = preliminary.

NOTE: The indexes of aggregate weekly hours are calculated by dividing the current months estimates of aggregate hours by the corresponding 2002 annual average levels. Aggregate hours

estimates are the product of estimates of average weekly hours and production and nonsupervisory worker employment.

Data reflect the conversion to the 2007 version of the North American Industry Classification System (NAICS) as the basis for the assignment and tabulation of economic data by industry, replacing NAICS 2002. See <http://www.bls.gov/ces/cesnaics07.htm> for more details.

**Table B-6. Indexes of aggregate weekly payrolls of production and nonsupervisory workers<sup>1</sup> on private nonfarm payrolls by industry sector and selected industry detail**

(2002=100)

Industry	Not seasonally adjusted				Seasonally adjusted						Percent change from: Nov. 2008- Dec. 2008 <sup>P</sup>
	Dec. 2007	Oct. 2008	Nov. 2008 <sup>P</sup>	Dec. 2008 <sup>P</sup>	Dec. 2007	Aug. 2008	Sept. 2008	Oct. 2008	Nov. 2008 <sup>P</sup>	Dec. 2008 <sup>P</sup>	
Total private .....	129.6	129.6	130.1	127.5	127.5	129.4	128.8	128.3	128.1	127.0	-0.9
Goods-producing .....	116.8	115.9	112.8	108.6	116.5	115.2	113.6	112.2	110.9	108.6	-2.1
Natural resources and mining .....	170.3	194.7	194.1	186.3	169.8	191.4	191.2	189.8	190.5	185.8	-2.5
Construction .....	126.3	131.3	123.9	115.7	129.6	126.9	125.1	123.0	120.9	119.4	-1.2
Manufacturing .....	108.8	103.6	102.4	100.5	106.7	105.1	103.5	102.4	101.5	99.0	-2.5
Durable goods .....	112.9	105.2	104.1	102.2	110.4	108.1	106.0	104.4	103.2	100.2	-2.9
Nondurable goods .....	101.5	100.1	99.6	97.5	100.0	99.5	99.2	98.9	98.2	96.5	-1.7
Private service-providing .....	133.3	133.5	135.5	133.3	130.8	133.9	133.3	133.5	133.4	133.0	-.3
Trade, transportation, and utilities .....	124.0	118.9	119.9	119.4	119.9	120.2	119.4	118.7	117.7	117.0	-6
Wholesale trade .....	133.6	130.1	131.5	127.8	130.4	131.5	130.0	129.8	128.8	127.6	-9
Retail trade .....	116.2	108.8	110.3	111.2	111.3	110.5	110.3	108.8	108.1	107.4	-6
Transportation and warehousing .....	130.0	126.3	125.3	125.6	125.5	126.2	124.9	125.0	122.9	123.4	.4
Utilities .....	115.9	119.9	121.4	121.1	116.1	117.5	119.0	119.4	119.7	121.3	1.3
Information .....	122.1	123.6	125.9	122.9	119.4	123.6	123.5	124.0	124.0	123.2	-6
Financial activities .....	135.8	135.7	139.1	135.2	133.2	137.6	137.1	136.6	136.4	136.4	.0
Professional and business services .....	145.3	147.5	150.3	145.7	142.1	145.7	145.5	146.1	146.8	145.7	-7
Education and health services .....	141.0	146.1	148.3	147.4	138.6	144.9	144.9	145.3	146.0	146.3	.2
Leisure and hospitality .....	133.6	135.6	132.7	131.3	135.0	137.8	137.3	136.6	135.9	135.3	-4
Other services .....	114.0	115.3	115.6	113.4	113.6	116.0	115.8	115.6	115.2	114.4	-7

<sup>1</sup> See footnote 1, table B-2.

<sup>P</sup> = preliminary.

NOTE: The indexes of aggregate weekly payrolls are calculated by dividing the current months estimates of aggregate payrolls by the corresponding 2002 annual average levels. Aggregate payroll estimates are the product of estimates of average hourly earnings, average weekly hours, and production and nonsupervisory

worker employment.

Data reflect the conversion to the 2007 version of the North American Industry Classification System (NAICS) as the basis for the assignment and tabulation of economic data by industry, replacing NAICS 2002. See <http://www.bls.gov/ces/cesnaics07.htm> for more details.

Table B-7. Diffusion indexes of employment change

(Percent)

Time span	Jan.	Feb.	Mar.	Apr.	May	June	July	Aug.	Sept.	Oct.	Nov.	Dec.
	Private nonfarm payrolls, 274 industries <sup>1</sup>											
Over 1-month span:												
2004 .....	50.5	50.5	64.1	62.6	61.7	58.9	56.0	50.0	56.9	56.9	51.3	51.8
2005 .....	52.2	60.6	54.2	58.2	55.8	58.2	58.0	61.3	54.7	53.6	62.4	54.7
2006 .....	65.1	60.9	64.4	59.3	53.3	52.7	60.4	58.9	53.5	55.8	57.1	56.0
2007 .....	51.6	51.8	52.7	51.1	56.6	50.4	52.2	51.6	56.4	54.6	48.2	48.5
2008 .....	45.4	41.4	47.4	45.6	46.4	42.3	38.3	46.2	35.9	34.1	P 27.2	P 25.4
Over 3-month span:												
2004 .....	54.4	52.9	57.3	63.5	68.8	66.6	61.3	56.4	57.7	59.5	61.9	54.6
2005 .....	52.2	55.5	57.5	60.8	58.9	61.9	60.4	63.9	61.1	54.4	54.9	61.3
2006 .....	67.2	66.2	66.6	65.5	60.6	58.2	56.0	58.9	55.7	56.4	57.1	58.4
2007 .....	58.4	54.7	55.3	54.7	56.2	53.3	53.1	54.7	58.4	56.8	54.7	52.4
2008 .....	46.7	42.7	42.3	44.0	43.1	44.0	36.3	37.4	34.1	33.0	P 28.3	P 24.1
Over 6-month span:												
2004 .....	50.0	51.6	55.3	60.9	63.7	65.1	65.1	63.9	60.4	61.7	58.2	56.0
2005 .....	54.6	57.3	56.8	57.5	57.5	58.2	64.4	62.8	62.0	59.3	61.5	62.0
2006 .....	63.1	64.4	67.2	67.0	64.4	66.4	61.5	61.7	60.4	59.7	60.8	56.0
2007 .....	59.1	56.4	57.5	56.8	58.8	58.2	56.2	58.0	58.2	57.1	54.6	53.8
2008 .....	51.5	49.8	44.7	46.5	43.6	39.1	37.6	39.1	33.6	31.6	P 28.3	P 26.8
Over 12-month span:												
2004 .....	40.5	42.3	45.1	48.9	51.3	58.2	57.5	55.7	57.3	58.8	60.6	60.8
2005 .....	60.6	60.8	59.7	58.9	58.0	60.0	60.9	63.3	60.4	58.9	59.5	61.7
2006 .....	67.2	65.1	65.5	62.6	64.8	66.4	64.4	64.4	66.2	65.1	64.4	65.5
2007 .....	62.6	59.1	60.4	58.9	59.5	58.4	57.5	58.8	61.7	60.4	59.9	57.7
2008 .....	53.8	54.6	52.6	50.4	49.3	45.8	44.7	42.5	41.4	38.0	P 31.8	P 30.5
	Manufacturing payrolls, 84 industries <sup>1</sup>											
Over 1-month span:												
2004 .....	43.5	47.6	47.0	63.7	50.6	51.2	58.3	42.9	42.9	48.2	42.3	39.9
2005 .....	36.3	48.8	42.9	44.6	42.3	35.1	38.1	47.0	45.8	46.4	47.0	47.0
2006 .....	57.7	45.8	54.8	48.8	38.1	53.0	50.6	44.0	36.3	40.5	38.1	39.3
2007 .....	47.6	35.7	30.4	29.8	37.5	39.3	41.7	33.3	40.5	45.2	44.6	36.3
2008 .....	40.5	28.6	38.1	35.1	44.6	30.4	26.8	37.5	25.0	18.5	P 18.5	P 11.3
Over 3-month span:												
2004 .....	41.1	40.5	43.5	56.5	58.9	61.3	57.7	47.0	46.4	41.7	44.6	38.7
2005 .....	38.1	39.3	42.3	44.6	36.3	37.5	33.3	39.9	45.8	41.7	38.7	49.4
2006 .....	54.8	52.4	47.6	48.8	44.6	50.6	42.9	47.6	36.3	37.5	32.1	34.5
2007 .....	33.9	28.6	32.1	27.4	29.8	32.7	31.0	34.5	32.1	39.3	44.0	41.7
2008 .....	35.7	27.4	26.8	29.2	29.8	35.7	24.4	22.6	21.4	22.6	P 18.5	P 14.3
Over 6-month span:												
2004 .....	29.2	31.5	32.7	44.6	49.4	54.8	59.5	56.0	51.2	51.8	44.0	38.7
2005 .....	33.9	38.1	35.1	36.9	32.1	32.1	41.7	35.7	36.3	36.9	37.5	42.3
2006 .....	42.9	45.2	50.6	47.6	48.2	47.6	46.4	48.8	43.5	41.7	38.7	29.8
2007 .....	34.5	27.4	23.8	27.4	31.5	34.5	33.3	31.0	29.2	35.1	34.5	32.7
2008 .....	34.5	33.9	32.1	28.0	26.8	20.8	19.6	24.4	17.3	17.9	P 15.5	P 15.5
Over 12-month span:												
2004 .....	13.1	14.3	13.1	20.2	23.2	35.7	36.9	38.1	36.9	44.0	44.6	44.6
2005 .....	44.6	43.5	41.7	40.5	36.3	35.1	32.1	33.9	32.7	33.3	33.3	38.1
2006 .....	44.6	40.5	40.5	39.3	39.3	44.6	41.7	42.3	46.4	48.2	45.2	44.0
2007 .....	39.3	36.3	36.9	28.6	29.8	26.2	26.8	29.2	30.4	29.8	33.3	33.9
2008 .....	29.8	29.8	29.8	24.4	27.4	24.4	23.8	21.4	22.6	20.2	P 17.9	P 17.9

<sup>1</sup> Based on seasonally adjusted data for 1-, 3-, and 6-month spans and unadjusted data for the 12-month span.

P = preliminary.

NOTE: Figures are the percent of industries with employment increasing plus one-half of the industries with unchanged employment, where 50 percent indicates an equal balance between industries with increasing

and decreasing employment.

Data reflect the conversion to the 2007 version of the North American Industry Classification System (NAICS) as the basis for the assignment and tabulation of economic data by industry, replacing NAICS 2002. See <http://www.bls.gov/ces/cesnaics07.htm> for more details.