

News

United States
Department
of Labor



Bureau of Labor Statistics

Washington, D.C. 2012

Technical information:

Employment: (202) 691-6559

USDL 09-03

<http://www.bls.gov/sae/>

Unemployment: (202) 691-6392

<http://www.bls.gov/lau/>

For release: 10:00 A.M. (EST)

Media contact: (202) 691-5902

Tuesday, January 6, 2009

METROPOLITAN AREA EMPLOYMENT AND UNEMPLOYMENT: NOVEMBER 2008

Unemployment rates were higher in November than a year earlier in 364 of the 369 metropolitan areas, lower in 4 areas, and unchanged in 1 area, the Bureau of Labor Statistics of the U.S. Department of Labor reported today. Twenty-three areas recorded jobless rates of at least 10.0 percent, while eight areas registered rates below 3.0 percent. The national unemployment rate in November was 6.5 percent, not seasonally adjusted, up from 4.5 percent a year earlier.

Metropolitan Area Unemployment (Not Seasonally Adjusted)

In November, 121 metropolitan areas reported jobless rates of at least 7.0 percent, up from 18 areas a year earlier, while 34 areas posted rates below 4.0 percent, down from 133 areas in November 2007. El Centro, Calif., and neighboring Yuma, Ariz., continued to record the highest unemployment rates, 23.4 and 17.9 percent, respectively. Logan, Utah-Idaho, registered the lowest jobless rate, 2.4 percent. Overall, 140 areas posted unemployment rates above the U.S. figure of 6.5 percent, 218 areas reported rates below it, and 11 areas had the same rate. (See table 1 and the map.)

Elkhart-Goshen, Ind., recorded the largest jobless rate increase from November 2007 (+7.9 percentage points), followed by Danville, Va. (+6.5 points). Both areas experienced layoffs in manufacturing. An additional 56 areas registered over-the-year unemployment rate increases of 3.0 percentage points or more, and another 112 areas had rate increases of 2.0 to 2.9 points. No area had a jobless rate decrease of more than 0.3 percentage point from a year earlier.

Of the 49 metropolitan areas with a Census 2000 population of 1 million or more, Detroit-Warren-Livonia, Mich., and Riverside-San Bernardino-Ontario, Calif., reported the highest unemployment rates in November 2008, 9.5 percent each. Twelve additional large areas posted rates of 7.0 percent or more. The large areas with the lowest jobless rates in November were Oklahoma City, Okla., and Washington-Arlington-Alexandria, D.C.-Va.-Md.-W.Va., 4.4 percent each. All 49 large areas registered higher unemployment rates than in November 2007. Providence-Fall River-Warwick, R.I.-Mass., had the largest jobless rate increase from a year earlier (+3.6 percentage points), followed by Charlotte-Gastonia-Concord, N.C.-S.C., and Tampa-St. Petersburg-Clearwater, Fla. (+3.3 points each). Seventeen additional large areas recorded over-the-year unemployment rate increases of 2.0 percentage points or more, and 27 other areas had rate increases of at least 1.0 point.

Metropolitan Division Unemployment (Not Seasonally Adjusted)

Eleven of the most populous metropolitan areas are composed of 34 metropolitan divisions, which are essentially separately identifiable employment centers. In November, Detroit-Livonia-Dearborn, Mich., again registered the highest division jobless rate, 10.6 percent, followed by Los Angeles-Long Beach-Glendale, Calif., and Warren-Troy-Farmington Hills, Mich., at 8.7 percent each. Bethesda-Frederick-Gaithersburg, Md., continued to report the lowest unemployment rate among the divisions, 3.8 percent. Nashua, N.H.-Mass., posted the next lowest rate, 4.0 percent. (See table 2.)

In November, all 34 metropolitan divisions again recorded over-the-year jobless rate increases. Los Angeles-Long Beach-Glendale, Calif., experienced the largest rate increase (+3.6 percentage points). West Palm Beach-Boca Raton-Boynton Beach, Fla., registered the next largest unemployment rate increase (+3.0 percentage points). Nine additional divisions reported over-the-year rate increases of 2.0 percentage points or more.

In 7 of the 11 metropolitan areas that contain divisions, the ranges between the highest and lowest division jobless rates were 1.0 percentage point or more in November. Boston-Cambridge-Quincy, Mass.-N.H., posted the largest rate difference among its divisions, 4.3 percentage points (Lawrence-Methuen-Salem, Mass.-N.H., 8.3 percent, compared with Nashua, N.H.-Mass., 4.0 percent).

Metropolitan Area Nonfarm Employment (Not Seasonally Adjusted)

Among the 310 metropolitan areas for which nonfarm payroll data were available in November 2008, 93 metropolitan areas recorded over-the-year employment gains, 210 reported losses, and 7 were unchanged. The largest over-the-year employment increase was recorded in Houston-Sugar Land-Baytown, Texas (+54,300), followed by Dallas-Fort Worth-Arlington, Texas (+46,900), Washington-Arlington-Alexandria, D.C.-Va.-Md.-W.Va. (+31,100), and Seattle-Tacoma-Bellevue, Wash. (+19,900). The largest over-the-year percentage increase in employment was recorded in McAllen-Edinburg-Mission, Texas (+3.9 percent), followed by Grand Junction, Colo. (+3.4 percent), Laredo, Texas (+3.0 percent), and College Station-Bryan, Texas (+2.8 percent). (See table 3.)

The largest over-the-year decreases in employment occurred in Detroit-Warren-Livonia, Mich. (-72,600), Atlanta-Sandy Springs-Marietta, Ga. (-67,800), Miami-Fort Lauderdale-Pompano Beach, Fla. (-59,300), Los Angeles-Long Beach-Santa Ana, Calif. (-58,800), and Phoenix-Mesa-Scottsdale, Ariz. (-57,600). The largest over-the-year percentage decreases in employment were experienced in Flint, Mich. (-6.3 percent), Lake Havasu City-Kingman, Ariz. (-6.1 percent), Elkhart-Goshen, Ind. (-5.4 percent), Yuma, Ariz. (-5.3 percent), and St. George, Utah (-4.6 percent).

Over the year, nonfarm employment increased in 11 of the 38 metropolitan areas with annual average employment levels above 750,000 in 2007. The largest over-the-year percentage gain in employment was recorded in Houston-Sugar Land-Baytown, Texas (+2.1 percent), followed by San Antonio, Texas (+2.0 percent), Austin-Round Rock, Texas, and Dallas-Fort Worth-Arlington, Texas (+1.6 percent each), and Virginia Beach-Norfolk-Newport News, Va.-N.C. (+1.5 percent). Among the large areas, the largest over-the-year percentage decrease in employment was experienced in Detroit-Warren-Livonia, Mich. (-3.7 percent), followed by Phoenix-Mesa-Scottsdale, Ariz. (-3.0 percent), Atlanta-Sandy Springs-Marietta, Ga., and Riverside-San Bernardino-Ontario, Calif. (-2.7 percent each), and Miami-Fort Lauderdale-Pompano Beach Fla., and Tampa-St. Petersburg-Clearwater, Fla. (-2.4 percent each).

Metropolitan Division Nonfarm Employment (Not Seasonally Adjusted)

Nonfarm payroll employment data were available in November 2008 for 32 metropolitan divisions, which are essentially separately identifiable employment centers within a metropolitan area. Ten of the 32 metropolitan divisions reported over-the-year employment increases while 22 reported losses. The largest over-the-year employment increase in the metropolitan divisions occurred in Dallas-Plano-Irving, Texas (+31,100), followed by Washington-Arlington-Alexandria, D.C.-Va.-Md.-W.Va. (+27,000), Seattle-Bellevue-Everett, Wash. (+23,900), and Fort Worth-Arlington, Texas (+15,800). Of the 22 metropolitan divisions that reported losses, the largest over-the-year employment decreases were experienced in Warren-Troy-Farmington Hills, Mich. (-39,200), Santa Ana-Anaheim-Irvine, Calif. (-38,400), Chicago-Naperville-Joliet, Ill. (-34,400), Detroit-Livonia-Dearborn, Mich. (-33,400), and Miami-Miami Beach-Kendall, Fla. (-23,700). (See table 4.)

The largest over-the-year percentage gains in employment among the metropolitan divisions were recorded in Fort Worth-Arlington, Texas (+1.8 percent), Seattle-Bellevue-Everett, Wash. (+1.6 percent), Dallas-Plano-Irving, Texas (+1.5 percent), and Washington-Arlington-Alexandria, D.C.-Va.-Md.-W.Va. (+1.1 percent). Of the metropolitan divisions that experienced over-the-year decreases in employment, the largest decreases were in Detroit-Livonia-Dearborn, Mich. (-4.3 percent), Warren-Troy-Farmington Hills, Mich. (-3.3 percent), Fort Lauderdale-Pompano Beach-Deerfield Beach, Fla. (-2.8 percent), and Santa Ana-Anaheim-Irvine, Calif. (-2.5 percent).

The Regional and State Employment and Unemployment release for December is scheduled to be issued on Tuesday, January 27. The Metropolitan Area Employment and Unemployment release for December is scheduled to be issued on Wednesday, February 4.

Hurricane Katrina

For November, BLS and its state partners continued to make modifications to the usual estimation procedures for the LAUS program to reflect the impact of Hurricane Katrina on the labor force statistics in affected areas. These modifications included: (1) modifying the state population controls to account for displacement due to Katrina; (2) developing labor force estimates for the New Orleans-Metairie-Kenner metropolitan area using an alternative to the model-based method; and (3) not publishing labor force estimates for the months immediately following the hurricane for the parishes within the New Orleans-Metairie-Kenner metropolitan area and cities within those parishes, where the quality of input data was severely compromised by the hurricane.

For more information on LAUS procedures and estimates for November 2008, see *Hurricane Information: Katrina and Rita* at <http://www.bls.gov/Katrina/home.htm> or call (202) 691-6392.

Technical Note

This release presents labor force and unemployment data from the Local Area Unemployment Statistics (LAUS) program (tables 1 and 2) for 369 metropolitan statistical areas and metropolitan New England City and Town Areas (NECTAs), plus 8 areas in Puerto Rico. Estimates for 34 metropolitan and NECTA divisions also are presented. Nonfarm payroll employment estimates from the Current Employment Statistics (CES) program (tables 3 and 4) are provided for most of the same areas. State estimates were previously published in the news release, *Regional and State Employment and Unemployment*, and are republished in this release for ease of reference. The LAUS and CES programs are both federal-state cooperative endeavors.

Labor force and unemployment—from the LAUS program

Definitions. The labor force and unemployment data are based on the same concepts and definitions as those used for the official national estimates obtained from the Current Population Survey (CPS), a sample survey of households that is conducted for the Bureau of Labor Statistics (BLS) by the U.S. Census Bureau. The LAUS program measures employment and unemployment on a place-of-residence basis. The universe for each is the civilian noninstitutional population 16 years of age and over. *Employed* persons are those who did any work at all for pay or profit in the reference week (the week including the 12th of the month) or worked 15 hours or more without pay in a family business or farm, plus those not working who had a job from which they were temporarily absent, whether or not paid, for such reasons as labor-management dispute, illness, or vacation. *Unemployed* persons are those who were not employed during the reference week (based on the definition above), had actively looked for a job sometime in the 4-week period ending with the reference week, and were currently available for work; persons on layoff expecting recall need not be looking for work to be counted as unemployed. The *labor force* is the sum of employed and unemployed persons. The *unemployment rate* is the number of unemployed as a percent of the labor force.

Method of estimation. Estimates for states, the District of Columbia, the Los Angeles-Long Beach-Glendale metropolitan division, and New York City are produced using time-series models with real-time benchmarking to national CPS totals. Model-based estimation was extended to the following areas and their respective balances of state in 2005: the Chicago-Naperville-Joliet, IL Metropolitan Division; Cleveland-Elyria-Mentor, OH Metropolitan Statistical Area; Detroit-Warren-Livonia, MI Metropolitan Statistical Area; Miami-Miami Beach-Kendall, FL Metropolitan Division; New Orleans-Metairie-Kenner, LA Metropolitan Statistical Area; and Seattle-Bellevue-Everett, WA Metropolitan Division. (Model-based estimation of the New Orleans-Metairie-Kenner metropolitan area was suspended following

Hurricane Katrina; the indirect estimation methods described below will be used for this area until further notice.) Modeling improves the statistical basis of the estimation for these areas and provides important tools for analysis, such as measures of errors and seasonally adjusted series. For all other substate areas in this release, estimates are prepared through indirect estimation procedures using a building-block approach. Employment estimates, which are based largely on “place of work” estimates from the CES program, are adjusted to refer to place of residence as used in the CPS. Unemployment estimates are aggregates of persons previously employed in industries covered by state unemployment insurance (UI) laws and entrants to the labor force data from the CPS. The substate estimates of employment and unemployment, which geographically exhaust the entire state, are adjusted proportionally to ensure that they add to the independently estimated state or balance-of-state totals. A detailed description of the estimation procedures is available from BLS upon request.

Annual revisions. Labor force and unemployment data shown for the prior year reflect adjustments made at the end of each year, usually implemented with January estimates. The adjusted model-based estimates reflect updated population data from the U.S. Census Bureau, any revisions in the other data sources, and model reestimation. All substate estimates are reestimated and adjusted to add to the revised model-based estimates.

Employment—from the CES program

Definitions. Employment data refer to persons on establishment payrolls who receive pay for any part of the pay period that includes the 12th of the month. Persons are counted at their place of work rather than at their place of residence; those appearing on more than one payroll are counted on each payroll. Industries are classified on the basis of their principal activity in accordance with the 2007 version of the North American Industry Classification System.

Method of estimation. The employment data are estimated using a “link relative” technique in which a ratio (link relative) of current-month employment to that of the previous month is computed from a sample of establishments reporting for both months. The estimates of employment for the current month are obtained by multiplying the estimates for the previous month by these ratios. Small-domain models are used as the official estimators for the approximately 39 percent of CES published series which have insufficient sample for direct sample-based estimates.

Annual revisions. Employment estimates are adjusted annually to a complete count of jobs, called benchmarks, derived principally from tax reports that are submitted by employers who are covered under state unemployment insurance (UI) laws. The benchmark information is used to

adjust the monthly estimates between the new benchmark and the preceding one and also to establish the level of employment for the new benchmark month. Thus, the benchmarking process establishes the level of employment, and the sample is used to measure the month-to-month changes in the level for the subsequent months.

Reliability of the estimates

The estimates presented in this release are based on sample surveys, administrative data, and modeling and, thus, are subject to sampling and other types of errors. Sampling error is a measure of sampling variability—that is, variation that occurs by chance because a sample rather than the entire population is surveyed. Survey data also are subject to nonsampling errors, such as those which can be introduced into the data collection and processing operations. Estimates not directly derived from sample surveys are subject to additional errors resulting from the particular estimation processes used. The sums of individual items may not always equal the totals shown in the same tables because of rounding. Unemployment rates are computed from unrounded data and thus may differ slightly from rates computed using the rounded data displayed in the tables.

Labor force and unemployment estimates. Model-based error measures are available for states on the BLS Web site at <http://www.bls.gov/lau/lastderr.htm>. Measures of nonsampling error are not available, but additional information on the subject is provided in *Employment and Earnings Online* at <http://www.bls.gov/opub/ee/home.htm>.

Employment estimates. Measures of sampling error for state CES data at the supersector level and for metro-

politan area CES data at the total nonfarm level are available online at <http://www.bls.gov/sae/790stderr.htm>. Information on recent benchmark revisions for states is available on the BLS Web site at <http://www.bls.gov/sae/>.

Area definitions

The substate area data published in this release reflect the standards and definitions established by the U.S. Office of Management and Budget on November 20, 2007. Data reflect New England City and Town Area (NECTA) definitions, rather than county-based definitions, in the six New England States. A detailed list of the geographic definitions is available at <http://www.bls.gov/lau/lausmsa.htm>.

Additional information

More complete information on the technical procedures used to develop these estimates and additional data appear in *Employment and Earnings Online*.

Estimates of unadjusted and seasonally adjusted labor force and unemployment data for states, census regions and divisions, and seven substate areas are available in the news release, *Regional and State Employment and Unemployment*. Estimates of labor force and unemployment for all states, metropolitan areas, labor market areas, counties, cities with a population of 25,000 or more, and other areas used in the administration of various federal economic assistance programs are available on the Internet at <http://www.bls.gov/lau/>. Employment data from the CES program are available on the BLS Web site at <http://www.bls.gov/sae/>.

Information in this release will be made available to sensory impaired individuals upon request. Voice phone: (202) 691-5200; TDD message referral phone: 1-800-877-8339.

Table 1. Civilian labor force and unemployment by state and metropolitan area

(Numbers in thousands)

Table with 13 columns: State and area, Civilian labor force (October, November), Unemployed (Number, Percent of labor force). Rows include Alabama, Alaska, Arizona, Arkansas, California, Colorado, Connecticut, etc., with data for 2007, 2008, and 2008P.

See footnotes at end of table.

Table 1. Civilian labor force and unemployment by state and metropolitan area—Continued

(Numbers in thousands)

State and area	Civilian labor force				Unemployed							
	October		November		Number				Percent of labor force			
					October		November		October		November	
	2007	2008	2007	2008 ^P	2007	2008	2007	2008 ^P	2007	2008	2007	2008 ^P
Texas—Continued												
College Station-Bryan	104.3	107.6	104.5	108.0	3.5	4.5	3.6	4.7	3.4	4.1	3.4	4.4
Corpus Christi	197.6	201.2	198.0	201.2	8.1	10.5	8.4	10.7	4.1	5.2	4.2	5.3
Dallas-Fort Worth-Arlington	3,115.5	3,176.6	3,127.4	3,187.2	126.0	173.4	129.4	182.0	4.0	5.5	4.1	5.7
El Paso	294.2	302.0	295.0	302.6	15.7	20.1	16.1	21.0	5.3	6.7	5.4	6.9
Houston-Sugar Land-Baytown	2,756.5	2,828.4	2,768.7	2,832.8	109.2	152.5	112.8	157.0	4.0	5.4	4.1	5.5
Killeen-Temple-Fort Hood	152.2	155.8	153.4	156.8	6.6	8.4	6.9	8.8	4.4	5.4	4.5	5.6
Laredo	88.2	91.4	88.9	91.8	3.8	5.2	4.1	5.5	4.3	5.6	4.6	6.0
Longview	106.5	108.9	106.8	108.9	3.9	4.9	3.9	5.0	3.6	4.5	3.7	4.6
Lubbock	138.8	140.5	139.7	141.0	4.6	5.5	4.7	5.8	3.3	3.9	3.4	4.1
McAllen-Edinburg-Mission	269.2	284.1	271.9	286.7	15.2	21.9	16.7	23.6	5.7	7.7	6.1	8.2
Midland	71.9	72.8	72.2	73.1	2.0	2.3	2.0	2.4	2.7	3.1	2.7	3.3
Odessa	68.0	69.3	68.1	69.3	2.1	2.6	2.2	2.7	3.1	3.7	3.2	3.9
San Angelo	52.3	52.0	52.7	52.5	1.9	2.3	1.9	2.5	3.5	4.5	3.6	4.7
San Antonio	928.5	953.0	931.9	953.6	35.3	48.8	36.4	51.5	3.8	5.1	3.9	5.4
Sherman-Denison	56.0	57.9	56.0	57.9	2.6	3.1	2.6	3.3	4.6	5.4	4.6	5.7
Texarkana	62.1	64.0	62.4	63.7	2.8	3.2	2.8	3.3	4.4	5.0	4.5	5.1
Tyler	97.0	99.8	97.3	98.4	3.9	6.4	4.0	5.2	4.0	6.4	4.1	5.3
Victoria	57.4	57.9	57.7	58.1	2.0	2.6	2.0	2.7	3.5	4.4	3.5	4.7
Waco	113.7	115.3	114.1	115.4	4.5	5.3	4.6	5.7	3.9	4.6	4.0	4.9
Wichita Falls	74.0	75.6	74.4	76.1	2.8	4.0	2.9	4.2	3.8	5.2	3.9	5.5
Utah												
Logan	68.5	69.2	69.1	69.3	1.3	1.7	1.3	1.7	1.9	2.4	1.9	2.4
Ogden-Clearfield	264.5	265.2	264.6	264.0	7.7	9.5	7.6	9.7	2.9	3.6	2.9	3.7
Provo-Orem	231.7	229.4	232.9	229.9	5.7	6.9	5.5	7.4	2.5	3.0	2.4	3.2
St. George	63.6	62.6	63.5	62.0	1.8	3.0	1.9	3.2	2.8	4.8	3.0	5.2
Salt Lake City	605.3	608.8	610.9	612.4	15.6	19.7	16.1	20.8	2.6	3.2	2.6	3.4
Vermont												
Burlington-South Burlington	353.3	357.3	351.9	356.0	11.6	16.4	12.3	19.4	3.3	4.6	3.5	5.5
	112.7	114.3	112.5	113.8	3.5	4.9	3.4	5.4	3.1	4.3	3.0	4.8
Virginia												
Blacksburg-Christiansburg-Radford	78.6	80.3	78.3	79.6	2.6	4.1	2.7	4.5	3.3	5.1	3.5	5.6
Charlottesville	106.6	106.9	106.8	106.6	2.5	3.7	2.5	4.0	2.3	3.4	2.4	3.8
Danville	53.2	51.6	54.2	52.3	2.9	5.0	2.9	6.2	5.4	9.7	5.3	11.8
Harrisonburg	65.2	66.8	65.8	67.0	1.6	2.4	1.7	2.7	2.4	3.5	2.5	4.0
Lynchburg	122.2	125.7	123.2	126.0	3.8	5.4	4.0	5.8	3.2	4.3	3.2	4.6
Richmond	641.7	650.0	642.9	649.1	19.9	28.9	20.4	32.3	3.1	4.5	3.2	5.0
Roanoke	154.9	158.0	155.9	158.0	4.7	6.4	4.9	7.2	3.0	4.1	3.2	4.6
Virginia Beach-Norfolk-Newport News	812.7	840.6	816.3	839.3	25.6	36.7	26.5	40.5	3.2	4.4	3.2	4.8
Winchester	65.8	66.5	66.0	66.5	2.0	2.8	2.0	3.4	3.0	4.2	3.0	5.1
Washington												
Bellingham	107.6	110.7	109.2	112.2	4.0	5.6	4.4	6.3	3.7	5.1	4.0	5.6
Bremerton-Silverdale	123.6	126.6	125.5	126.7	5.0	6.9	5.4	7.3	4.0	5.4	4.3	5.8
Kennewick-Pasco-Richland	121.3	126.4	119.8	124.2	5.0	6.5	6.4	7.6	4.1	5.2	5.4	6.1
Longview	43.9	45.2	44.1	46.2	2.6	3.8	2.8	4.4	6.0	8.4	6.3	9.5
Mount Vernon-Anacortes	58.2	59.4	58.4	59.2	2.4	3.5	2.8	4.1	4.1	5.9	4.8	6.9
Olympia	129.0	133.9	131.1	136.1	5.2	7.3	5.6	7.9	4.0	5.4	4.3	5.8
Seattle-Tacoma-Bellevue	1,835.6	1,873.7	1,855.2	1,879.6	70.1	102.7	72.5	109.1	3.8	5.5	3.9	5.8
Spokane	235.9	238.7	239.7	243.6	9.7	13.5	11.0	15.6	4.1	5.7	4.6	6.4
Wenatchee	64.2	64.8	58.3	59.9	2.3	2.9	2.9	3.8	3.6	4.4	5.0	6.3
Yakima	125.9	127.8	115.9	119.7	5.3	7.2	7.8	9.2	4.2	5.6	6.8	7.7
West Virginia												
Charleston	139.0	138.8	138.1	137.2	5.2	4.6	5.1	4.7	3.7	3.3	3.7	3.4
Huntington-Ashland	133.8	133.1	134.7	133.1	5.5	6.2	5.7	6.4	4.1	4.7	4.3	4.8
Morgantown	63.5	64.2	63.6	63.7	2.0	1.7	1.9	1.8	3.1	2.7	2.9	2.8
Parkersburg-Marietta-Vienna	81.7	80.4	82.1	80.5	3.4	3.8	3.5	4.0	4.2	4.7	4.3	5.0
Wheeling	68.5	69.8	68.5	69.4	3.1	3.7	3.1	3.7	4.6	5.3	4.6	5.3
Wisconsin												
Appleton	121.3	120.4	121.5	120.6	4.9	5.1	5.0	6.1	4.1	4.3	4.1	5.0
Eau Claire	90.2	90.0	90.7	90.3	3.3	3.5	3.5	4.3	3.7	3.8	3.8	4.8
Fond du Lac	56.3	56.9	56.1	57.2	2.3	2.5	2.2	3.3	4.0	4.4	4.0	5.8
Green Bay	169.3	169.2	169.5	169.2	7.1	7.5	7.4	8.9	4.2	4.4	4.4	5.2
Janesville	83.9	82.8	83.9	82.9	4.3	5.5	4.2	6.1	5.2	6.6	5.0	7.4
La Crosse	75.2	74.2	75.3	74.2	2.6	2.9	2.7	3.3	3.5	3.9	3.6	4.5
Madison	335.6	333.7	338.0	334.5	10.9	11.6	11.1	12.9	3.2	3.5	3.3	3.9
Milwaukee-Waukesha-West Allis	798.6	792.2	800.0	790.6	36.8	38.2	37.6	43.4	4.6	4.8	4.7	5.5
Oshkosh-Neenah	92.4	92.2	92.7	92.5	3.7	3.8	3.8	4.5	4.0	4.1	4.1	4.8
Racine	98.6	97.1	98.9	97.2	5.1	5.2	5.3	6.1	5.2	5.4	5.3	6.3
Sheboygan	65.0	64.3	65.0	64.2	2.6	2.7	2.7	3.4	3.9	4.3	4.1	5.3
Wausau	74.6	73.6	74.9	73.6	2.8	3.0	2.9	3.5	3.7	4.1	3.9	4.8
Wyoming												
Casper	39.8	40.3	40.5	40.7	0.9	1.0	1.1	1.1	2.2	2.6	2.6	2.7
Cheyenne	42.2	42.4	42.8	42.7	1.3	1.5	1.5	1.6	3.0	3.4	3.6	3.7

See footnotes at end of table.

Table 1. Civilian labor force and unemployment by state and metropolitan area—Continued

(Numbers in thousands)

State and area	Civilian labor force				Unemployed							
					Number				Percent of labor force			
	October		November		October		November		October		November	
	2007	2008	2007	2008 ^P	2007	2008	2007	2008 ^P	2007	2008	2007	2008 ^P
Puerto Rico	1,366.5	1,357.6	1,365.8	1,371.0	162.5	171.9	149.5	169.8	11.9	12.7	10.9	12.4
Aguadilla-Isabela-San Sebastian	112.0	112.4	112.6	112.7	14.6	15.4	13.2	15.3	13.1	13.7	11.7	13.6
Fajardo	28.9	29.0	29.0	29.6	4.3	4.3	4.0	4.2	14.7	14.7	13.7	14.2
Guayama	26.7	27.6	27.0	27.4	4.2	4.5	3.9	4.4	15.6	16.4	14.5	16.1
Mayaguez	37.2	37.1	37.5	37.4	4.8	5.3	4.4	5.1	13.0	14.1	11.8	13.7
Ponce	90.6	91.0	91.0	92.1	11.4	12.0	10.5	11.8	12.6	13.2	11.6	12.8
San German-Cabo Rojo	53.1	51.9	53.4	52.8	6.4	7.0	5.8	6.9	12.1	13.5	10.9	13.2
San Juan-Caguas-Guaynabo	923.5	908.7	919.6	918.9	102.5	108.4	94.4	107.2	11.1	11.9	10.3	11.7
Yauco	38.1	39.3	38.2	39.6	5.6	5.9	5.3	5.8	14.8	15.1	13.8	14.5

P = preliminary.

¹ Area boundaries do not reflect official OMB definitions.

NOTE: Data refer to place of residence. Data for Puerto Rico are derived from a monthly household survey similar to the Current Population Survey. Area definitions are based on Office of Management and Budget Bulletin No. 08-01, dated November 20, 2007, and are available at <http://www.bls.gov/lau/lausmsa.htm>. Areas in the six New England states are Metropolitan New England

City and Town Areas (NECTAs), while areas in other states are county-based. Some metropolitan areas lie in two or more states. They are listed under the state that appears first in their titles. Davenport-Moline-Rock Island, Iowa-Ill., and Weirton-Steubenville, W.Va.-Ohio, are the exceptions in that they are listed under Illinois and Ohio, respectively, for operational reasons. Estimates for the latest month are subject to revision the following month.

Table 2. Civilian labor force and unemployment by state, selected metropolitan area, and metropolitan division ¹

(Numbers in thousands)

State, area, and division	Civilian labor force				Unemployed							
					Number				Percent of labor force			
	October		November		October		November		October		November	
	2007	2008	2007	2008P	2007	2008	2007	2008P	2007	2008	2007	2008P
California	18,277.9	18,607.9	18,342.2	18,575.1	986.6	1,490.4	1,021.2	1,542.6	5.4	8.0	5.6	8.3
Los Angeles-Long Beach-Santa Ana	6,594.1	6,624.3	6,629.0	6,633.7	318.0	509.2	321.9	535.4	4.8	7.7	4.9	8.1
Los Angeles-Long Beach-Glendale	4,960.8	4,979.0	4,994.5	4,995.0	249.5	408.6	252.5	435.0	5.0	8.2	5.1	8.7
Santa Ana-Anaheim-Irvine	1,633.3	1,645.3	1,634.5	1,638.7	68.4	100.6	69.4	100.3	4.2	6.1	4.2	6.1
San Francisco-Oakland-Fremont	2,243.8	2,289.0	2,252.7	2,288.8	101.2	148.2	102.3	150.7	4.5	6.5	4.5	6.6
Oakland-Fremont-Hayward	1,287.7	1,308.2	1,292.0	1,308.9	62.9	93.3	63.5	94.6	4.9	7.1	4.9	7.2
San Francisco-San Mateo-Redwood City	956.0	980.8	960.7	979.9	38.4	54.9	38.9	56.1	4.0	5.6	4.0	5.7
District of Columbia	325.1	329.3	327.1	328.6	17.8	24.3	18.6	27.6	5.5	7.4	5.7	8.4
Washington-Arlington-Alexandria ²	2,984.1	3,025.6	2,991.1	3,014.0	88.6	124.6	88.7	131.8	3.0	4.1	3.0	4.4
Bethesda-Frederick-Gaithersburg ³	636.3	638.0	636.3	633.8	17.2	23.7	16.4	24.1	2.7	3.7	2.6	3.8
Washington-Arlington-Alexandria ²	2,347.9	2,387.6	2,354.8	2,380.2	71.5	100.9	72.3	107.7	3.0	4.2	3.1	4.5
Florida	9,205.4	9,382.9	9,224.1	9,303.7	400.5	663.8	398.0	677.4	4.4	7.1	4.3	7.3
Miami-Fort Lauderdale-Pompano Beach	2,846.3	2,882.4	2,851.6	2,850.2	118.3	187.5	112.4	181.8	4.2	6.5	3.9	6.4
Fort Lauderdale-Pompano Beach-Deerfield Beach	1,000.8	1,010.7	1,004.4	1,001.1	38.4	63.8	38.9	66.1	3.8	6.3	3.9	6.6
Miami-Miami Beach-Kendall	1,200.7	1,216.0	1,201.2	1,200.5	49.4	74.7	44.0	66.2	4.1	6.1	3.7	5.5
West Palm Beach-Boca Raton-Boynton Beach	644.9	655.8	646.0	648.6	30.5	48.9	29.6	49.5	4.7	7.5	4.6	7.6
Illinois	6,719.0	6,635.0	6,748.4	6,638.6	322.1	448.7	324.6	459.5	4.8	6.8	4.8	6.9
Chicago-Naperville-Joliet ²	4,894.6	4,841.7	4,929.9	4,857.3	222.9	309.2	228.8	314.8	4.6	6.4	4.6	6.5
Chicago-Naperville-Joliet	4,107.0	4,046.9	4,142.5	4,066.6	188.6	258.7	191.9	258.0	4.6	6.4	4.6	6.3
Gary ³	329.3	335.8	330.7	334.6	13.8	19.0	15.2	22.7	4.2	5.6	4.6	6.8
Lake County-Kenosha County ²	458.3	459.0	456.7	456.1	20.6	31.6	21.7	34.1	4.5	6.9	4.8	7.5
Massachusetts	3,389.1	3,411.4	3,406.9	3,419.1	130.7	169.7	131.0	188.6	3.9	5.0	3.8	5.5
Boston-Cambridge-Quincy ²	2,473.9	2,498.3	2,494.4	2,509.8	89.5	114.8	88.8	126.5	3.6	4.6	3.6	5.0
Boston-Cambridge-Quincy	1,496.6	1,512.7	1,509.4	1,519.3	52.1	66.0	51.4	73.2	3.5	4.4	3.4	4.8
Brockton-Bridgewater-Easton	124.3	124.9	125.3	125.7	5.5	6.9	5.4	7.7	4.4	5.6	4.3	6.1
Framingham	145.4	146.8	146.6	147.6	4.5	5.8	4.4	6.3	3.1	3.9	3.0	4.3
Haverhill-North Andover-Amesbury ²	120.2	120.9	120.8	121.1	4.5	5.9	4.5	6.4	3.8	4.9	3.8	5.3
Lawrence-Methuen-Salem ²	68.8	69.7	69.3	70.0	4.1	5.6	4.1	5.8	6.0	8.1	5.9	8.3
Lowell-Billerica-Chelmsford ²	151.0	152.6	152.1	153.6	6.0	7.9	5.9	8.7	4.0	5.1	3.9	5.7
Nashua ²	178.7	180.5	180.5	181.3	5.4	6.8	5.6	7.3	3.0	3.8	3.1	4.0
Peabody	126.0	127.0	126.9	127.7	5.0	6.6	4.9	7.2	4.0	5.2	3.9	5.6
Taunton-Norton-Raynham	62.8	63.2	63.5	63.5	2.4	3.4	2.5	3.8	3.9	5.4	3.9	5.9
Michigan	4,998.0	4,931.4	5,005.0	4,917.3	336.7	422.5	341.9	449.1	6.7	8.6	6.8	9.1
Detroit-Warren-Livonia	2,138.9	2,126.7	2,132.5	2,098.7	166.8	161.2	161.2	198.9	7.8	8.8	7.6	9.5
Detroit-Livonia-Dearborn	879.6	868.2	875.2	858.4	81.7	87.3	76.8	91.2	9.3	10.1	8.8	10.6
Warren-Troy-Farmington Hills	1,259.3	1,258.5	1,257.3	1,240.3	85.2	99.6	84.4	107.8	6.8	7.9	6.7	8.7
New York	9,506.2	9,638.1	9,544.1	9,602.0	417.5	524.2	422.0	567.3	4.4	5.4	4.4	5.9
New York-Northern New Jersey-Long Island ²	9,312.8	9,468.9	9,359.3	9,432.8	400.3	516.6	397.8	542.9	4.3	5.5	4.2	5.8
Edison-New Brunswick ³	1,188.2	1,210.4	1,195.0	1,204.1	40.6	62.8	42.6	64.1	3.4	5.2	3.6	5.3
Nassau-Suffolk	1,481.8	1,501.7	1,490.8	1,493.7	52.6	74.1	54.5	78.0	3.5	4.9	3.7	5.2
New York-White Plains-Wayne ²	5,558.0	5,649.3	5,582.9	5,634.0	265.1	317.7	258.2	338.8	4.8	5.6	4.6	6.0
Newark-Union ³	1,084.9	1,107.6	1,090.6	1,100.9	42.0	62.1	42.5	62.1	3.9	5.6	3.9	5.6
Pennsylvania	6,290.1	6,446.1	6,318.3	6,423.6	255.0	347.9	258.4	378.6	4.1	5.4	4.1	5.9
Philadelphia-Camden-Wilmington ²	2,953.2	3,010.5	2,971.5	3,001.0	121.0	169.7	119.3	176.3	4.1	5.6	4.0	5.9
Camden ³	656.9	671.6	661.7	668.5	25.5	38.5	26.1	38.8	3.9	5.7	3.9	5.8
Philadelphia	1,936.3	1,975.2	1,946.2	1,969.0	82.7	111.5	81.6	118.0	4.3	5.6	4.2	6.0
Wilmington ³	360.1	363.6	363.5	363.4	12.8	19.8	11.6	19.5	3.6	5.4	3.2	5.4
Texas	11,533.3	11,830.5	11,590.2	11,863.9	465.6	636.5	481.5	664.1	4.0	5.4	4.2	5.6
Dallas-Fort Worth-Arlington	3,115.5	3,176.6	3,127.4	3,187.2	126.0	173.4	129.4	182.0	4.0	5.5	4.1	5.7
Dallas-Plano-Irving	2,081.6	2,120.6	2,091.0	2,129.7	85.6	118.3	87.8	123.9	4.1	5.6	4.2	5.8
Fort Worth-Arlington	1,033.9	1,056.1	1,036.4	1,057.6	40.5	55.1	41.6	58.2	3.9	5.2	4.0	5.5
Washington	3,447.8	3,523.2	3,455.0	3,519.8	139.6	201.8	154.9	222.6	4.0	5.7	4.5	6.3
Seattle-Tacoma-Bellevue	1,835.6	1,873.7	1,855.2	1,879.6	70.1	102.7	72.5	109.1	3.8	5.5	3.9	5.8
Seattle-Bellevue-Everett	1,443.9	1,470.4	1,455.5	1,470.0	53.1	77.7	53.9	81.9	3.7	5.3	3.7	5.6
Tacoma	391.7	403.3	399.8	409.6	17.0	25.1	18.6	27.2	4.3	6.2	4.6	6.6

P = preliminary.

¹ These 11 areas contain all of the 34 metropolitan divisions.² Part of the area (or division) is in one or more adjacent states.³ All of the division is in one or more adjacent states.

NOTE: Data refer to place of residence. Area definitions are based on Office of Management and Budget Bulletin No. 08-01, dated November 20, 2007, and are available at <http://www.bls.gov/lau/lausmsa.htm>. Areas in the six New England states are Metropolitan New England City and Town Areas (NECTAs), while areas in other states are county-based. Some metropolitan areas lie in two or more states. They are listed under the state that corresponds to the first city in their title.

Metropolitan divisions are listed under their metropolitan areas. Some divisions lie in more than one state, and some, like Camden, N.J., are totally outside the states under which their metropolitan areas are listed. Three sets of metropolitan areas and divisions have similar or identical titles. For Washington-Arlington-Alexandria, D.C.-Va.-Md.-W.Va., the metropolitan area and division titles are identical. For the Boston-Cambridge-Quincy, Mass.-N.H., and Chicago-Naperville-Joliet, Ill.-Ind.-Wis., metropolitan areas, the division titles are similar but include only Massachusetts and Illinois, respectively. Estimates for the latest month are subject to revision the following month.

**ESTABLISHMENT DATA
NOT SEASONALLY ADJUSTED**

**ESTABLISHMENT DATA
NOT SEASONALLY ADJUSTED**

Table 3. Employees on nonfarm payrolls by state and metropolitan area

(Numbers in thousands)

State and area	October		November		Change from November 2007 to November 2008 P	
	2007	2008	2007	2008P	Number	Percent
Alabama	2,014.2	2,011.0	2,023.2	2,007.8	-15.4	-0.8
Anniston-Oxford	53.4	53.5	53.8	53.7	-.1	-.2
Auburn-Opelika	56.1	56.9	56.5	56.6	.1	.2
Birmingham-Hoover	534.4	532.2	535.6	532.7	-2.9	-.5
Decatur	59.4	58.6	59.6	58.5	-1.1	-1.8
Dothan	62.8	62.2	63.2	62.3	-.9	-1.4
Florence-Muscle Shoals	57.7	58.2	57.9	58.2	.3	.5
Huntsville	211.6	215.2	213.5	215.7	2.2	1.0
Mobile	183.8	184.3	184.3	184.5	.2	.1
Montgomery	180.4	182.0	181.1	182.1	1.0	.6
Tuscaloosa	98.5	98.6	98.7	98.5	-.2	-.2
Alaska	314.6	317.7	307.3	310.7	3.4	1.1
Anchorage	168.8	170.4	166.9	169.2	2.3	1.4
Arizona	2,679.8	2,606.5	2,692.8	2,609.7	-83.1	-3.1
Flagstaff	65.5	64.8	64.9	64.7	-.2	-.3
Lake Havasu City-Kingman	54.0	50.7	54.1	50.8	-3.3	-6.1
Phoenix-Mesa-Scottsdale	1,917.6	1,866.1	1,927.3	1,869.7	-57.6	-3.0
Prescott	65.7	63.7	65.7	63.4	-2.3	-3.5
Tucson	384.8	371.5	386.9	371.2	-15.7	-4.1
Yuma	53.2	51.7	54.6	51.7	-2.9	-5.3
Arkansas	1,211.9	1,212.2	1,211.9	1,210.9	-1.0	-.1
Fayetteville-Springdale-Rogers	209.3	210.6	210.2	211.1	.9	.4
Fort Smith	126.3	126.5	125.9	125.7	-.2	-.2
Little Rock-North Little Rock-Conway	348.7	348.9	349.4	349.1	-.3	-.1
California	15,228.6	15,126.3	15,266.6	15,129.5	-137.1	-.9
Bakersfield	240.4	243.5	241.8	244.2	2.4	1.0
Chico	76.6	76.5	77.2	76.4	-.8	-1.0
Fresno	306.9	306.1	307.1	303.1	-4.0	-1.3
Los Angeles-Long Beach-Santa Ana	5,639.9	5,588.9	5,650.6	5,591.8	-58.8	-1.0
Merced	59.4	60.7	59.6	60.6	1.0	1.7
Modesto	159.0	157.4	159.4	158.0	-1.4	-.9
Napa	64.4	64.3	64.0	63.4	-.6	-.9
Oxnard-Thousand Oaks-Ventura	293.8	288.2	295.3	288.6	-6.7	-2.3
Redding	66.5	65.0	66.7	64.3	-2.4	-3.6
Riverside-San Bernardino-Ontario	1,266.4	1,239.9	1,272.5	1,238.7	-33.8	-2.7
Sacramento-Arden-Arcade-Roseville	905.9	894.2	909.1	895.4	-13.7	-1.5
Salinas	129.4	130.5	130.2	130.5	.3	.2
San Diego-Carlsbad-San Marcos	1,313.1	1,303.8	1,316.9	1,301.6	-15.3	-1.2
San Francisco-Oakland-Fremont	2,049.7	2,029.0	2,057.5	2,033.5	-24.0	-1.2
San Jose-Sunnyvale-Santa Clara	913.2	914.5	915.4	911.1	-4.3	-.5
San Luis Obispo-Paso Robles	105.6	103.9	105.9	103.2	-2.7	-2.5
Santa Barbara-Santa Maria-Goleta	175.4	173.9	176.0	175.5	-.5	-.3
Santa Cruz-Watsonville	98.6	97.9	98.6	97.3	-1.3	-1.3
Santa Rosa-Petaluma	192.7	192.7	193.0	192.0	-1.0	-.5
Stockton	214.8	212.1	215.5	211.7	-3.8	-1.8
Vallejo-Fairfield	127.5	125.9	127.1	125.8	-1.3	-1.0
Visalia-Porterville	114.4	112.8	114.5	113.3	-1.2	-1.0
Colorado	2,348.5	2,363.1	2,353.0	2,357.6	4.6	.2
Boulder	168.3	171.4	168.9	171.0	2.1	1.2
Colorado Springs	262.7	260.8	263.7	260.2	-3.5	-1.3
Denver-Aurora	1,254.7	1,257.9	1,257.1	1,256.1	-1.0	-.1
Fort Collins-Loveland	139.5	139.8	139.6	139.0	-.6	-.4
Grand Junction	64.1	66.5	64.5	66.7	2.2	3.4
Greeley	84.0	84.6	83.9	84.2	.3	.4
Pueblo	59.1	59.5	59.3	59.3	.0	.0
Connecticut	1,712.5	1,708.7	1,722.0	1,711.3	-10.7	-.6
Bridgeport-Stamford-Norwalk	422.9	424.2	426.1	424.9	-1.2	-.3
Danbury	70.2	71.4	71.0	72.0	1.0	1.4
Hartford-West Hartford-East Hartford	562.6	570.5	565.3	570.2	4.9	.9
New Haven	280.2	279.6	281.7	281.0	-.7	-.2
Norwich-New London	137.0	136.4	136.8	135.7	-1.1	-.8
Waterbury	68.7	68.9	69.8	68.9	-.9	-1.3
Delaware	438.4	438.0	442.3	439.2	-3.1	-.7
Dover	66.4	66.0	66.1	65.6	-.5	-.8
District of Columbia	699.5	708.7	702.5	707.9	5.4	.8
Washington-Arlington-Alexandria	3,005.2	3,040.8	3,019.4	3,050.5	31.1	1.0
Florida	8,022.4	7,876.3	8,074.4	7,871.8	-202.6	-2.5
Bradenton-Sarasota-Venice	292.2	284.0	294.7	284.7	-10.0	-3.4
Cape Coral-Fort Myers	223.1	215.1	225.0	215.5	-9.5	-4.2
Deltona-Daytona Beach-Ormond Beach	172.0	169.5	172.9	169.8	-3.1	-1.8
Fort Walton Beach-Crestview-Destin	85.0	83.2	85.4	83.5	-1.9	-2.2
Gainesville	136.7	136.8	137.3	136.7	-.6	-.4
Jacksonville	633.3	624.5	636.7	625.8	-10.9	-1.7
Lakeland-Winter Haven	213.9	209.3	214.3	209.5	-4.8	-2.2
Miami-Fort Lauderdale-Pompano Beach	2,431.6	2,390.4	2,451.7	2,392.4	-59.3	-2.4

See footnotes at end of table.

Table 3. Employees on nonfarm payrolls by state and metropolitan area—Continued

(Numbers in thousands)

State and area	October		November		Change from November 2007 to November 2008 P	
	2007	2008	2007	2008P	Number	Percent
Florida—Continued						
Naples-Marco Island	127.2	123.6	129.6	125.9	-3.7	-2.9
Ocala	105.6	103.3	105.9	103.4	-2.5	-2.4
Orlando-Kissimmee	1,101.6	1,097.5	1,105.6	1,098.1	-7.5	-7
Palm Bay-Melbourne-Titusville	211.3	207.9	212.8	207.8	-5.0	-2.3
Panama City-Lynn Haven	76.9	75.3	77.2	74.6	-2.6	-3.4
Pensacola-Ferry Pass-Brent	175.2	173.7	175.8	174.4	-1.4	-8
Port St. Lucie	132.7	132.7	134.5	132.7	-1.8	-1.3
Tallahassee	181.0	178.8	181.4	178.9	-2.5	-1.4
Tampa-St. Petersburg-Clearwater	1,292.1	1,270.4	1,299.5	1,268.9	-30.6	-2.4
Georgia						
Albany	4,171.4	4,112.1	4,186.0	4,091.6	-94.4	-2.3
Athens-Clarke County	64.5	64.1	64.9	64.0	-.9	-1.4
Athens-Clarke County	84.3	84.3	84.7	84.6	-.1	-.1
Atlanta-Sandy Springs-Marietta	2,479.5	2,433.7	2,489.8	2,422.0	-67.8	-2.7
Augusta-Richmond County	217.0	214.0	217.9	213.6	-4.3	-2.0
Columbus	122.0	120.1	122.5	120.3	-2.2	-1.8
Dalton	78.0	75.2	78.4	75.1	-3.3	-4.2
Gainesville	77.6	77.3	77.8	77.1	-.7	-.9
Macon	100.8	100.4	101.3	99.9	-1.4	-1.4
Savannah	162.4	160.3	163.0	160.2	-2.8	-1.7
Valdosta	56.7	55.7	56.9	55.5	-1.4	-2.5
Warner Robins	59.2	58.5	59.2	57.8	-1.4	-2.4
Hawaii						
Honolulu	623.4	620.5	629.6	627.3	-2.3	-.4
Honolulu	455.3	454.0	460.3	459.1	-1.2	-.3
Idaho						
Boise City-Nampa	664.5	652.4	662.6	645.0	-17.6	-2.7
Boise City-Nampa	279.0	273.3	279.3	270.5	-8.8	-3.2
Coeur d'Alene	58.6	58.6	58.4	57.9	-.5	-.9
Illinois						
Bloomington-Normal	6,029.2	6,010.9	6,042.1	5,994.3	-47.8	-.8
Bloomington-Normal	92.6	92.8	93.2	93.3	.1	.1
Champaign-Urbana	115.9	116.1	116.2	116.3	.1	.1
Chicago-Naperville-Joliet	4,588.5	4,575.9	4,595.6	4,561.9	-33.7	-7.7
Davenport-Moline-Rock Island	189.1	189.7	190.1	190.4	.3	.2
Decatur	56.0	55.8	56.1	55.6	-.5	-.9
Peoria	189.0	190.5	189.2	190.5	1.3	.7
Rockford	160.5	162.3	163.8	162.3	-1.5	-.9
Springfield	112.3	112.5	112.6	112.7	.1	.1
Indiana						
Bloomington	3,025.9	2,994.8	3,030.6	2,984.0	-46.6	-1.5
Bloomington	86.0	86.2	85.7	85.7	.0	.0
Elkhart-Goshen	130.1	124.4	129.8	122.8	-7.0	-5.4
Evansville	181.3	180.4	181.4	180.1	-1.3	-.7
Fort Wayne	219.6	217.2	218.2	218.1	-.1	-.0
Indianapolis-Carmel	927.0	930.0	930.3	927.1	-3.2	-.3
Lafayette	96.5	96.7	96.4	96.0	-.4	-.4
Muncie	54.8	54.3	54.9	54.1	-.8	-1.5
South Bend-Mishawaka	147.2	144.5	147.1	143.5	-3.6	-2.4
Terre Haute	75.2	73.7	75.2	73.3	-1.9	-2.5
Iowa						
Cedar Rapids	1,534.5	1,541.2	1,536.9	1,540.7	3.8	.2
Cedar Rapids	138.2	139.7	138.9	139.7	.8	.6
Des Moines-West Des Moines	325.1	326.6	325.3	327.0	1.7	.5
Dubuque	56.3	55.8	56.2	55.3	-.9	-1.6
Iowa City	92.1	91.3	92.4	91.6	-.8	-.9
Sioux City	74.9	73.9	74.8	74.3	-.5	-.7
Waterloo-Cedar Falls	91.6	92.2	91.9	91.5	-.4	-.4
Kansas						
Topeka	1,393.7	1,402.6	1,399.6	1,406.9	7.3	.5
Topeka	110.5	110.9	110.9	111.0	.1	.1
Wichita	306.5	305.5	308.0	308.0	.0	.0
Kentucky						
Bowling Green	1,885.3	1,875.5	1,893.7	1,873.0	-20.7	-1.1
Bowling Green	63.1	62.7	63.6	63.9	.3	.5
Lexington-Fayette	258.2	258.1	259.6	257.6	-2.0	-.8
Louisville-Jefferson County	632.8	625.5	634.6	623.8	-10.8	-1.7
Louisiana						
Alexandria	1,941.2	1,951.3	1,948.7	1,957.3	8.6	.4
Alexandria	65.8	65.9	65.9	66.1	.2	.3
Baton Rouge	375.3	377.7	375.7	378.5	2.8	.7
Houma-Bayou Cane-Thibodaux	96.6	96.0	96.4	96.2	-.2	-.2
Lafayette	150.8	153.3	150.8	153.3	2.5	1.7
Lake Charles	92.7	92.7	92.5	92.5	.0	.0
Monroe	79.7	79.3	80.1	79.6	-.5	-.6
New Orleans-Metairie-Kenner	521.4	530.9	523.5	531.5	8.0	1.5
Shreveport-Bossier City	180.6	182.8	180.9	182.8	1.9	1.1
Maine						
Bangor	626.3	622.5	625.0	617.8	-7.2	-1.2
Bangor	67.4	67.2	67.8	67.0	-.8	-1.2
Portland-South Portland-Biddeford	197.6	196.5	197.9	195.6	-2.3	-1.2

See footnotes at end of table.

Table 3. Employees on nonfarm payrolls by state and metropolitan area—Continued

(Numbers in thousands)

State and area	October		November		Change from November 2007 to November 2008 P	
	2007	2008	2007	2008P	Number	Percent
Maryland	2,627.9	2,649.4	2,638.9	2,651.6	12.7	0.5
Baltimore-Towson	1,328.4	1,334.9	1,334.9	1,336.1	1.2	.1
Hagerstown-Martinsburg	102.5	103.7	102.8	103.8	1.0	1.0
Salisbury	56.1	56.6	56.7	57.0	.3	.5
Massachusetts	3,310.0	3,313.5	3,314.7	3,306.0	-8.7	-.3
Barnstable Town	101.1	100.9	97.4	96.8	-6	-6
Boston-Cambridge-Quincy	2,504.7	2,519.7	2,514.3	2,522.8	8.5	.3
New Bedford	67.5	66.3	67.4	66.3	-1.1	-1.6
Springfield	299.9	298.5	300.4	297.7	-2.7	-.9
Worcester	249.4	246.5	249.6	246.5	-3.1	-1.2
Michigan	4,282.8	4,209.1	4,285.9	4,171.9	-114.0	-2.7
Ann Arbor	202.0	200.0	203.1	199.7	-3.4	-1.7
Battle Creek	58.9	57.6	58.9	57.6	-1.3	-2.2
Detroit-Warren-Livonia	1,964.4	1,907.7	1,972.8	1,900.2	-72.6	-3.7
Flint	148.3	139.8	149.1	139.7	-9.4	-6.3
Grand Rapids-Wyoming	397.6	397.1	399.6	397.0	-2.6	-.7
Holland-Grand Haven	115.0	112.3	114.9	112.1	-2.8	-2.4
Jackson	58.3	57.4	58.4	57.4	-1.0	-1.7
Kalamazoo-Portage	148.6	147.1	149.0	147.4	-1.6	-1.1
Lansing-East Lansing	228.8	224.0	229.4	224.0	-5.4	-2.4
Muskegon-Norton Shores	65.6	64.6	65.7	64.4	-1.3	-2.0
Niles-Benton Harbor	66.4	66.2	66.2	65.9	-.3	-.5
Saginaw-Saginaw Township North	90.4	87.3	90.2	87.0	-3.2	-3.5
Minnesota	2,796.9	2,778.0	2,799.8	2,769.3	-30.5	-1.1
Duluth	136.1	134.5	136.0	134.1	-1.9	-1.4
Minneapolis-St. Paul-Bloomington	1,812.8	1,797.4	1,817.0	1,794.8	-22.2	-1.2
Rochester	108.0	108.9	107.9	108.4	.5	.5
St. Cloud	104.8	104.4	105.2	103.8	-1.4	-1.3
Mississippi	1,159.0	1,143.9	1,162.2	1,144.1	-18.1	-1.6
Gulfport-Biloxi	111.3	110.1	111.7	109.7	-2.0	-1.8
Hattiesburg	61.8	60.6	62.0	61.1	-.9	-1.5
Jackson	263.5	261.0	264.3	261.7	-2.6	-1.0
Pascagoula	58.6	59.2	58.8	59.5	.7	1.2
Missouri	2,819.1	2,804.6	2,822.9	2,799.7	-23.2	-.8
Columbia	95.2	95.3	95.3	94.8	-.5	-.5
Jefferson City	80.1	79.5	80.4	79.3	-1.1	-1.4
Joplin	80.8	81.4	81.0	81.5	.5	.6
Kansas City	1,022.4	1,017.2	1,026.7	1,017.8	-8.9	-.9
St. Joseph	59.9	59.8	59.8	59.8	.0	.0
St. Louis ¹	1,365.2	1,353.9	1,367.5	1,350.6	-16.9	-1.2
Springfield	203.7	203.8	204.5	204.1	-.4	-.2
Montana	449.2	451.2	447.8	446.9	-.9	-.2
Billings	81.4	82.2	81.6	81.5	-.1	-.1
Missoula	57.8	57.5	57.8	57.3	-.5	-.9
Nebraska	972.1	980.0	975.1	976.3	1.2	.1
Lincoln	176.1	177.0	176.7	176.2	-.5	-.3
Omaha-Council Bluffs	468.5	471.5	468.8	469.2	.4	.1
Nevada	1,294.1	1,286.9	1,299.5	1,284.2	-15.3	-1.2
Las Vegas-Paradise	927.1	928.7	932.2	927.9	-4.3	-.5
Reno-Sparks	226.3	220.6	226.7	219.8	-6.9	-3.0
New Hampshire	658.1	661.3	656.7	660.6	3.9	.6
Manchester	101.9	101.7	102.5	102.2	-.3	-.3
Portsmouth	56.5	57.2	56.3	57.0	.7	1.2
Rochester-Dover	57.7	58.7	58.4	59.2	.8	1.4
New Jersey	4,093.7	4,074.4	4,108.5	4,080.5	-28.0	-.7
Atlantic City-Hammonton	149.3	148.9	149.2	147.7	-1.5	-1.0
Trenton-Ewing	239.3	237.8	240.2	238.2	-2.0	-.8
Vineland-Millville-Bridgeton	62.5	61.5	62.5	61.5	-1.0	-1.6
New Mexico	849.9	850.7	850.3	847.8	-2.5	-.3
Albuquerque	396.4	394.9	399.0	396.3	-2.7	-.7
Las Cruces	69.3	70.7	69.7	71.0	1.3	1.9
Santa Fe	65.5	65.6	65.7	65.1	-.6	-.9
New York	8,831.5	8,829.3	8,874.0	8,841.3	-32.7	-.4
Albany-Schenectady-Troy	453.3	453.7	454.0	452.8	-1.2	-.3
Binghamton	116.5	115.6	117.2	116.2	-1.0	-.9
Buffalo-Niagara Falls	554.7	555.0	556.5	554.0	-2.5	-.4
Glens Falls	54.8	54.8	54.3	53.5	-.8	-1.5
Ithaca	65.6	65.5	65.6	65.5	-.1	-.2
Kingston	65.1	65.0	65.2	65.2	.0	.0
New York-Northern New Jersey-Long Island	8,647.6	8,645.2	8,698.0	8,669.7	-28.3	-.3
Poughkeepsie-Newburgh-Middletown	257.8	258.0	258.2	258.5	.3	.1
Rochester	520.4	516.8	522.1	518.2	-.9	-.7
Syracuse	328.7	328.6	329.3	328.0	-1.3	-.4
Utica-Rome	135.1	134.2	134.8	134.0	-.8	-.6

See footnotes at end of table.

Table 3. Employees on nonfarm payrolls by state and metropolitan area—Continued

(Numbers in thousands)

State and area	October		November		Change from November 2007 to November 2008 P	
	2007	2008	2007	2008P	Number	Percent
North Carolina	4,198.1	4,179.7	4,208.2	4,135.8	-72.4	-1.7
Asheville	180.9	181.7	181.8	180.0	-1.8	-1.0
Burlington	61.9	61.3	62.1	61.5	-.6	-1.0
Charlotte-Gastonia-Concord	871.5	877.9	873.4	873.9	.5	.1
Durham	291.2	294.8	292.3	295.6	3.3	1.1
Fayetteville	129.2	129.9	129.7	129.6	-.1	-.1
Greensboro-High Point	375.3	377.8	376.9	377.7	.8	.2
Greenville	78.5	79.2	79.0	79.1	.1	.1
Hickory-Lenoir-Morganton	164.2	161.7	164.9	161.7	-3.2	-1.9
Raleigh-Cary	525.5	533.6	528.0	533.5	5.5	1.0
Rocky Mount	65.3	64.7	65.4	64.6	-.8	-1.2
Wilmington	148.6	150.1	148.7	148.6	-.1	-.1
Winston-Salem	220.7	224.4	222.0	224.9	2.9	1.3
North Dakota	365.0	369.7	364.1	369.1	5.0	1.4
Bismarck	60.8	61.9	60.5	62.1	1.6	2.6
Fargo	121.3	122.5	120.9	122.1	1.2	1.0
Grand Forks	55.2	55.8	55.2	56.0	.8	1.4
Ohio	5,456.6	5,439.9	5,473.1	5,445.9	-27.2	-.5
Akron	342.5	341.4	344.3	341.8	-2.5	-.7
Canton-Massillon	173.1	173.2	174.0	173.4	-.6	-.3
Cincinnati-Middletown	1,051.6	1,047.3	1,053.7	1,049.3	-4.4	-.4
Cleveland-Elyria-Mentor	1,075.8	1,068.9	1,076.4	1,065.4	-11.0	-1.0
Columbus	951.8	956.1	957.8	959.8	2.0	.2
Dayton	405.1	400.5	406.4	400.5	-5.9	-1.5
Lima	55.9	55.5	56.1	55.6	-.5	-.9
Mansfield	57.3	56.6	57.5	56.5	-1.0	-1.7
Springfield	52.1	52.1	52.2	52.1	-.1	-.2
Toledo	330.0	324.7	331.5	324.1	-7.4	-2.2
Youngstown-Warren-Boardman	240.7	242.3	242.0	242.7	.7	.3
Oklahoma	1,582.6	1,598.1	1,586.0	1,603.5	17.5	1.1
Oklahoma City	572.6	580.3	575.4	581.4	6.0	1.0
Tulsa	429.0	428.3	428.5	428.0	-.5	-.1
Oregon	1,753.9	1,731.8	1,755.6	1,723.7	-31.9	-1.8
Bend	72.3	72.4	72.4	72.3	-.1	-.1
Eugene-Springfield	157.8	155.0	158.4	155.5	-2.9	-1.8
Medford	87.2	86.0	87.9	86.2	-1.7	-1.9
Portland-Vancouver-Beaverton	1,050.2	1,039.9	1,054.9	1,042.2	-12.7	-1.2
Salem	155.0	153.6	153.7	151.7	-2.0	-1.3
Pennsylvania	5,851.0	5,837.0	5,859.7	5,817.4	-42.3	-.7
Allentown-Bethlehem-Easton	346.5	345.8	346.3	343.7	-2.6	-.8
Altoona	63.2	62.9	63.2	62.6	-.6	-.9
Erie	135.2	134.8	135.4	134.4	-1.0	-.7
Harrisburg-Carlisle	333.0	332.3	333.6	330.3	-3.3	-1.0
Johnstown	62.0	61.2	62.5	61.2	-1.3	-2.1
Lancaster	240.2	241.4	240.7	240.5	-.2	-.1
Philadelphia-Camden-Wilmington	2,835.6	2,832.5	2,851.4	2,835.5	-15.9	-.6
Pittsburgh	1,156.5	1,161.6	1,157.5	1,157.0	-.5	-.0
Reading	175.0	173.5	175.2	173.0	-2.2	-1.3
Scranton—Wilkes-Barre	264.7	264.4	265.3	264.0	-1.3	-.5
State College	76.9	76.6	77.2	76.7	-.5	-.6
Williamsport	54.1	53.5	54.3	53.1	-1.2	-2.2
York-Hanover	185.0	184.3	185.5	184.2	-1.3	-.7
Rhode Island	497.1	482.3	496.1	478.1	-18.0	-3.6
Providence-Fall River-Warwick	587.5	572.7	587.3	568.8	-18.5	-3.2
South Carolina	1,970.0	1,941.5	1,972.4	1,929.6	-42.8	-2.2
Anderson	64.5	63.6	64.8	63.2	-1.6	-2.5
Charleston-North Charleston-Summerville	300.6	298.8	301.1	297.3	-3.8	-1.3
Columbia	371.7	367.2	373.1	368.6	-4.5	-1.2
Florence	91.0	91.0	91.5	91.6	.1	.1
Greenville-Mauldin-Easley	323.4	323.7	324.0	323.0	-1.0	-.3
Myrtle Beach-North Myrtle Beach-Conway	128.0	124.7	125.4	120.8	-4.6	-3.7
Spartanburg	126.0	127.7	126.6	126.8	.2	.2
South Dakota	410.2	415.4	409.0	413.3	4.3	1.1
Rapid City	61.1	62.0	60.4	60.9	.5	.8
Sioux Falls	134.9	137.1	135.2	137.1	1.9	1.4
Tennessee	2,808.5	2,785.7	2,823.7	2,794.7	-29.0	-1.0
Chattanooga	249.8	248.1	250.4	248.3	-2.1	-.8
Clarksville	85.8	85.0	86.1	85.0	-1.1	-1.3
Jackson	62.4	62.5	62.9	62.4	-.5	-.8
Johnson City	82.6	82.6	82.9	82.3	-.6	-.7
Kingsport-Bristol-Bristol	122.5	123.4	122.9	123.7	.8	.7
Knoxville	339.8	338.7	340.7	337.6	-3.1	-.9
Memphis	647.5	636.5	652.8	639.4	-13.4	-2.1
Nashville-Davidson-Murfreesboro-Franklin	767.4	765.0	772.6	766.3	-6.3	-.8

See footnotes at end of table.

Table 3. Employees on nonfarm payrolls by state and metropolitan area—Continued

(Numbers in thousands)

State and area	October		November		Change from November 2007 to November 2008 P	
	2007	2008	2007	2008 ^P	Number	Percent
Texas	10,470.4	10,701.7	10,511.5	10,734.4	222.9	2.1
Abilene	66.1	67.0	66.4	67.3	.9	1.4
Amarillo	112.4	113.5	112.6	113.7	1.1	1.0
Austin-Round Rock	766.3	780.6	769.7	782.3	12.6	1.6
Beaumont-Port Arthur	165.0	165.5	165.5	166.2	.7	.4
Brownsville-Harlingen	123.5	125.9	124.0	126.1	2.1	1.7
College Station-Bryan	92.9	95.3	93.2	95.8	2.6	2.8
Corpus Christi	176.6	179.1	177.2	179.8	2.6	1.5
Dallas-Fort Worth-Arlington	2,976.5	3,021.2	2,984.1	3,031.0	46.9	1.6
El Paso	275.1	280.7	275.6	282.0	6.4	2.3
Houston-Sugar Land-Baytown	2,582.6	2,636.6	2,595.8	2,650.1	54.3	2.1
Killeen-Temple-Fort Hood	122.8	125.4	123.4	126.0	2.6	2.1
Laredo	86.4	89.3	87.2	89.8	2.6	3.0
Longview	97.0	99.1	97.3	99.6	2.3	2.4
Lubbock	129.3	130.5	129.8	130.8	1.0	.8
McAllen-Edinburg-Mission	211.6	219.3	212.9	221.2	8.3	3.9
Midland	66.6	68.3	66.9	68.4	1.5	2.2
Odessa	60.8	62.1	60.9	62.2	1.3	2.1
San Antonio	839.1	856.6	842.5	859.1	16.6	2.0
Texarkana	56.7	57.8	57.0	58.0	1.0	1.8
Tyler	93.9	94.9	94.4	95.3	.9	1.0
Waco	110.2	111.7	110.7	112.0	1.3	1.2
Wichita Falls	63.3	63.9	63.4	64.3	.9	1.4
Utah	1,262.6	1,259.1	1,271.6	1,260.9	-10.7	-8
Ogden-Clearfield	202.7	200.8	203.5	200.7	-2.8	-1.4
Provo-Orem	193.5	190.1	195.0	190.5	-4.5	-2.3
St. George	54.1	51.8	53.8	51.3	-2.5	-4.6
Salt Lake City	640.7	640.9	648.5	644.1	-4.4	-7
Vermont	312.1	311.2	310.5	308.8	-1.7	-5
Burlington-South Burlington	115.3	115.2	115.7	115.0	-.7	-6
Virginia	3,777.6	3,796.8	3,791.5	3,794.7	3.2	.1
Blacksburg-Christiansburg-Radford	72.8	72.8	72.2	72.0	-.2	-.3
Charlottesville	104.0	103.0	104.1	103.2	-.9	-.9
Harrisonburg	64.8	65.9	64.9	66.1	1.2	1.8
Lynchburg	110.3	112.3	110.9	112.7	1.8	1.6
Richmond	636.9	634.0	638.3	634.3	-4.0	-6
Roanoke	163.5	164.5	164.4	165.0	.6	.4
Virginia Beach-Norfolk-Newport News	777.3	791.3	781.1	792.5	11.4	1.5
Winchester	59.3	59.0	59.3	58.7	-.6	-1.0
Washington	2,972.8	2,956.6	2,975.0	2,972.7	-2.3	-.1
Bellingham	86.6	87.0	87.1	87.4	.3	.3
Bremerton-Silverdale	87.1	86.4	87.4	87.0	-.4	-.5
Kennewick-Pasco-Richland	93.5	95.7	93.9	95.8	1.9	2.0
Olympia	102.8	104.7	103.4	105.2	1.8	1.7
Seattle-Tacoma-Bellevue	1,761.6	1,760.1	1,768.6	1,788.5	19.9	1.1
Spokane	221.7	218.9	222.2	219.3	-2.9	-1.3
Yakima	80.6	80.7	80.1	79.9	-.2	-.2
West Virginia	763.8	763.9	765.9	765.4	-.5	-.1
Charleston	150.5	151.1	150.4	151.0	.6	.4
Huntington-Ashland	121.9	120.9	122.5	121.6	-.9	-.7
Morgantown	62.9	63.9	63.4	64.1	.7	1.1
Parkersburg-Marietta-Vienna	75.8	74.3	76.3	74.9	-1.4	-1.8
Wheeling	68.2	69.3	68.4	69.5	1.1	1.6
Wisconsin	2,909.8	2,879.6	2,904.4	2,872.0	-32.4	-1.1
Appleton	119.5	118.7	119.9	118.5	-1.4	-1.2
Eau Claire	84.4	84.5	84.9	84.4	-.5	-.6
Green Bay	171.3	171.3	171.1	170.9	-.2	-.1
Janesville	70.5	68.0	70.4	68.0	-2.4	-3.4
La Crosse	75.8	74.6	75.9	74.3	-1.6	-2.1
Madison	350.7	348.4	352.6	349.9	-2.7	-.8
Milwaukee-Waukesha-West Allis	863.3	853.7	862.5	851.3	-11.2	-1.3
Oshkosh-Neenah	93.8	93.7	93.8	93.8	.0	.0
Racine	80.7	78.8	80.6	78.4	-2.2	-2.7
Sheboygan	64.4	63.4	64.1	63.0	-1.1	-1.7
Wausau	73.2	72.4	73.4	72.0	-1.4	-1.9
Wyoming	292.7	301.7	289.3	297.5	8.2	2.8
Cheyenne	44.8	45.3	44.9	45.5	.6	1.3
Puerto Rico	1,023.4	991.8	1,026.0	995.1	-30.9	-3.0
Ponce	65.5	64.3	66.3	64.8	-1.5	-2.3
San Juan-Caguas-Guaynabo	766.2	740.4	766.7	743.4	-23.3	-3.0
Virgin Islands	45.9	46.3	45.9	46.6	.7	1.5

¹ Area boundaries do not reflect official OMB definitions.
^P = preliminary.

NOTE: Data are counts of jobs by place of work. Estimates subsequent to the current benchmark are provisional and will be revised when new information becomes available. Area definitions are based on Office of Management and Budget Bulletin No. 08-01, dated November 20, 2007, and are available at <http://www.bls.gov/lau/lausmsa.htm>. Areas in the six New England states are Metropolitan New England City and Town Areas (NECTAs), while areas in other states are county-based. Some metropolitan

areas lie in two or more states. They are listed under the state that appears first in their titles. Davenport-Moline-Rock Island, Iowa-Ill., and Weirton-Stuebenville, W. Va.-Ohio, are the exceptions in that they are listed under Illinois and Ohio, respectively, for operational reasons. Data reflect the conversion to the 2007 version of the North American Industry Classification System (NAICS) as the basis for the assignment and tabulation of economic data by industry, replacing NAICS 2002. For more details, see <http://www.bls.gov/sae/saenaics07.htm>.

Table 4. Employees on nonfarm payrolls by state, selected metropolitan area, and metropolitan division

(Numbers in thousands)

State, area, and division	October		November		Change from November 2007 to November 2008 ^P	
	2007	2008	2007	2008 ^P	Number	Percent
California	15,228.6	15,126.3	15,266.6	15,129.5	-137.1	-0.9
Los Angeles-Long Beach-Santa Ana	5,639.9	5,588.9	5,650.6	5,591.8	-58.8	-1.0
Los Angeles-Long Beach-Glendale	4,128.1	4,113.7	4,139.1	4,118.7	-20.4	-0.5
Santa Ana-Anaheim-Irvine	1,511.8	1,475.2	1,511.5	1,473.1	-38.4	-2.5
San Francisco-Oakland-Fremont	2,049.7	2,029.0	2,057.5	2,033.5	-24.0	-1.2
Oakland-Fremont-Hayward	1,052.7	1,029.9	1,054.9	1,032.4	-22.5	-2.1
San Francisco-San Mateo-Redwood City	997.0	999.1	1,002.6	1,001.1	-1.5	-0.1
District of Columbia	699.5	708.7	702.5	707.9	5.4	.8
Washington-Arlington-Alexandria ¹	3,005.2	3,040.8	3,019.4	3,050.5	31.1	1.0
Bethesda-Frederick-Gaithersburg ²	578.5	583.3	581.9	586.0	4.1	.7
Washington-Arlington-Alexandria ¹	2,426.7	2,457.5	2,437.5	2,464.5	27.0	1.1
Florida	8,022.4	7,876.3	8,074.4	7,871.8	-202.6	-2.5
Miami-Fort Lauderdale-Pompano Beach	2,431.6	2,390.4	2,451.7	2,392.4	-59.3	-2.4
Fort Lauderdale-Pompano Beach-Deerfield Beach	787.7	771.6	792.4	770.0	-22.4	-2.8
Miami-Miami Beach-Kendall	1,063.7	1,047.2	1,073.5	1,049.8	-23.7	-2.2
West Palm Beach-Boca Raton-Boynton Beach	580.2	571.6	585.8	572.6	-13.2	-2.3
Illinois	6,029.2	6,010.9	6,042.1	5,994.3	-47.8	-0.8
Chicago-Naperville-Joliet ¹	4,588.5	4,575.9	4,595.6	4,561.9	-33.7	-0.7
Chicago-Naperville-Joliet	3,901.6	3,885.8	3,909.9	3,875.5	-34.4	-0.9
Gary ²	284.0	285.9	284.6	284.7	.1	.0
Lake County-Kenosha County ¹	402.9	404.2	401.3	401.7	.4	.1
Massachusetts	3,310.0	3,313.5	3,314.7	3,306.0	-8.7	-0.3
Boston-Cambridge-Quincy ¹	2,504.7	2,519.7	2,514.3	2,522.8	8.5	.3
Boston-Cambridge-Quincy	1,719.3	1,734.6	1,727.7	1,735.5	7.8	.5
Brockton-Bridgewater-Easton	91.2	90.2	91.4	90.0	-1.4	-1.5
Framingham	158.8	160.2	159.5	160.8	1.3	.8
Haverhill-North Andover-Amesbury ¹	79.0	78.8	78.6	78.3	-0.3	-0.4
Lowell-Billerica-Chelmsford ¹	120.2	120.2	120.3	120.2	-0.1	-0.1
Nashua ¹	134.5	135.4	135.1	135.9	.8	.6
Peabody	102.0	102.0	102.4	102.1	-0.3	-0.3
Michigan	4,282.8	4,209.1	4,285.9	4,171.9	-114.0	-2.7
Detroit-Warren-Livonia	1,964.4	1,907.7	1,972.8	1,900.2	-72.6	-3.7
Detroit-Livonia-Dearborn	781.1	751.4	785.2	751.8	-33.4	-4.3
Warren-Troy-Farmington Hills	1,183.3	1,156.3	1,187.6	1,148.4	-39.2	-3.3
New York	8,831.5	8,829.3	8,874.0	8,841.3	-32.7	-0.4
New York-Northern New Jersey-Long Island ¹	8,647.6	8,645.2	8,698.0	8,669.7	-28.3	-0.3
Edison-New Brunswick ²	1,046.3	1,040.9	1,049.0	1,044.7	-4.3	-0.4
Nassau-Suffolk	1,282.4	1,282.9	1,288.8	1,284.0	-4.8	-0.4
New York-White Plains-Wayne ¹	5,278.7	5,282.6	5,316.3	5,298.2	-18.1	-0.3
Newark-Union ²	1,040.2	1,038.8	1,043.9	1,042.8	-1.1	-0.1
Pennsylvania	5,851.0	5,837.0	5,859.7	5,817.4	-42.3	-0.7
Philadelphia-Camden-Wilmington ¹	2,835.6	2,832.5	2,851.4	2,835.5	-15.9	-0.6
Camden ²	545.1	543.9	548.2	547.3	-0.9	-0.2
Philadelphia	1,933.0	1,933.0	1,942.3	1,930.9	-11.4	-0.6
Wilmington ²	357.5	355.6	360.9	357.3	-3.6	-1.0
Texas	10,470.4	10,701.7	10,511.5	10,734.4	222.9	2.1
Dallas-Fort Worth-Arlington	2,976.5	3,021.2	2,984.1	3,031.0	46.9	1.6
Dallas-Plano-Irving	2,100.3	2,129.6	2,105.1	2,136.2	31.1	1.5
Fort Worth-Arlington	876.2	891.6	879.0	894.8	15.8	1.8
Washington	2,972.8	2,956.6	2,975.0	2,972.7	-2.3	-0.1
Seattle-Tacoma-Bellevue	1,761.6	1,760.1	1,768.6	1,788.5	19.9	1.1
Seattle-Bellevue-Everett	1,474.5	1,475.1	1,478.5	1,502.4	23.9	1.6
Tacoma	286.5	285.0	288.9	286.1	-2.8	-1.0

¹ Part of the area is in one or more adjacent states.

² All of the area is in one or more adjacent states.

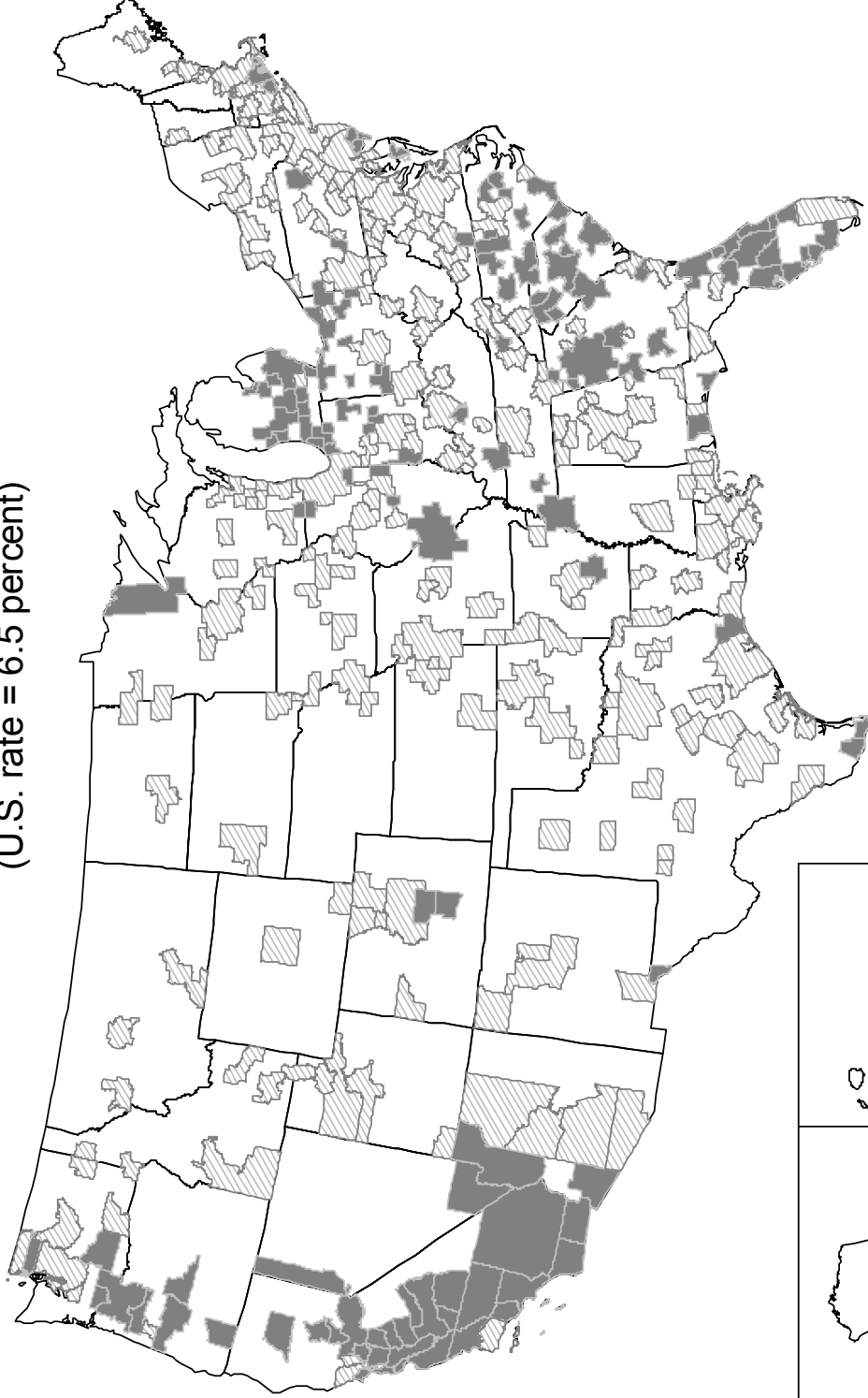
^P = preliminary.

NOTE: Data are counts of jobs by place of work. Estimates subsequent to the current benchmark are provisional and will be revised when new information becomes available. Area definitions are based on Office of Management and Budget Bulletin No. 08-01, dated November 20, 2007, and are available at <http://www.bls.gov/lau/lausmsa.htm>. Areas in the six New England states are Metropolitan New England City and Town

Areas (NECTAs), while areas in other states are county-based. Some metropolitan areas lie in two or more states. They are listed under the state that appears first in their titles. Some divisions lie in more than one state, and some, like Camden, N.J., are totally outside the states under which their metropolitan areas are listed. Data reflect the conversion to the 2007 version of the North American Industry Classification System (NAICS) as the basis for the assignment and tabulation of economic data by industry, replacing NAICS 2002. For more details, see <http://www.bls.gov/sae/saenacs07.htm>.

Unemployment rates for metropolitan areas, not seasonally adjusted, November 2008

(U.S. rate = 6.5 percent)



NOTE: Map includes data for 369 metropolitan areas based on Office of Management and Budget Bulletin No. 08-01. Areas in the six New England states are Metropolitan New England City and Town areas (NECTAs), while areas in other states are county-based.

