

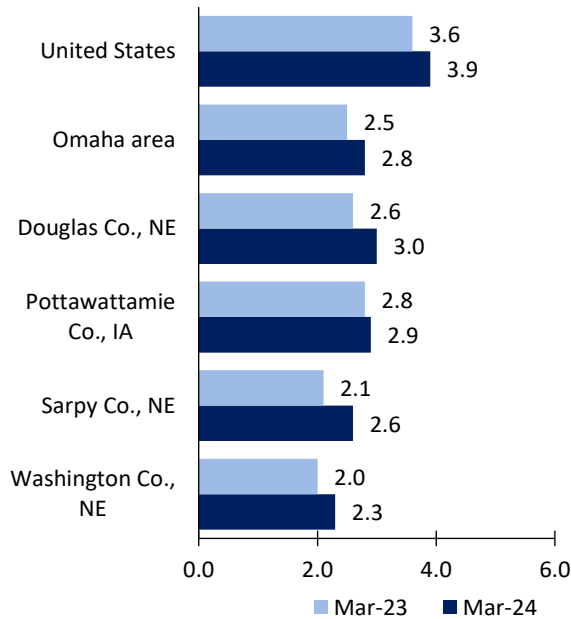
Omaha Area Economic Summary

Updated May 06, 2024

This summary presents a sampling of economic information for the area; supplemental data are provided for regions and the nation. Subjects include **unemployment, employment, wages, prices, spending, and benefits**. All data are not seasonally adjusted and some may be subject to revision. Area definitions may differ by subject. For more area summaries and geographic definitions, see www.bls.gov/regions/economic-summaries.htm.

Unemployment rates for the nation and selected areas

Unemployment rates

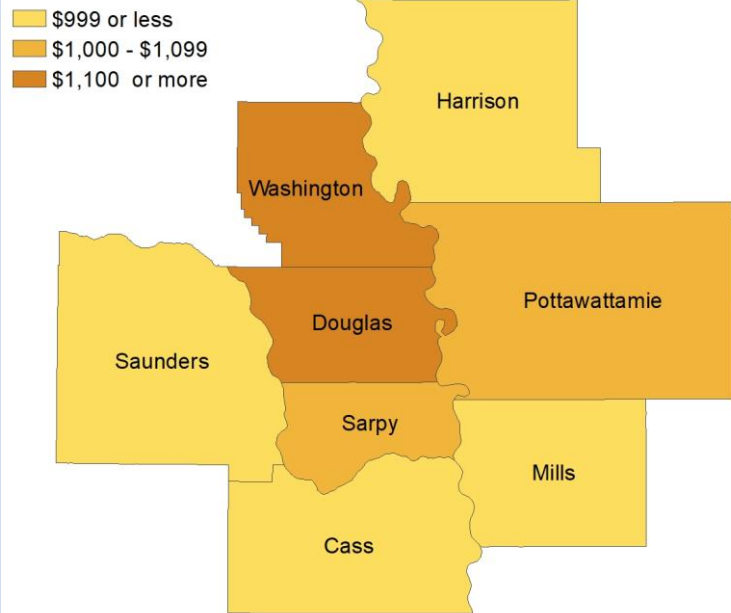


Source: U.S. BLS, Local Area Unemployment Statistics.

Average weekly wages for all industries by county

Omaha area, third quarter 2023

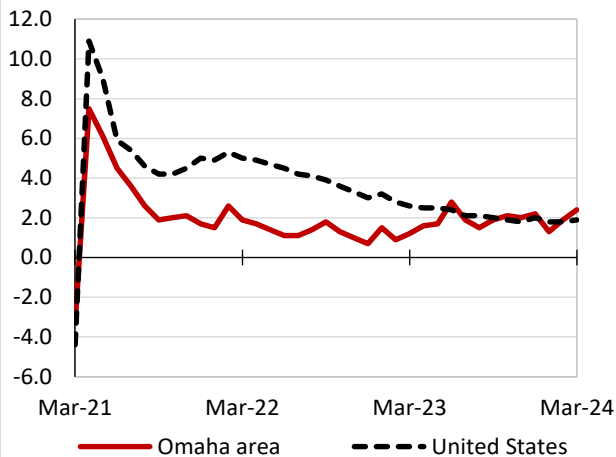
(U.S. = \$1,334; Area = \$1,185)



Source: U.S. BLS, Quarterly Census of Employment and Wages.

Over-the-year changes in employment on nonfarm payrolls and employment by major industry sector

12-month percent changes in employment



Source: U.S. BLS, Current Employment Statistics.

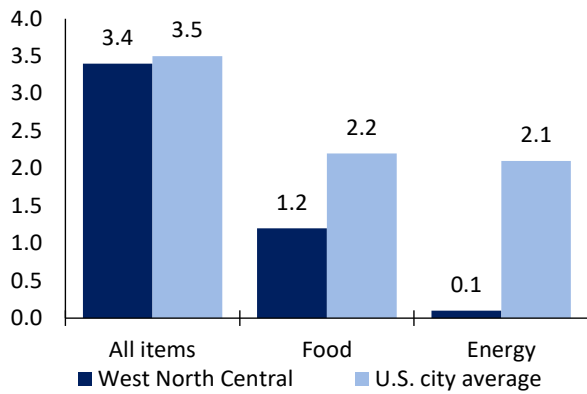
Omaha area employment (number in thousands)	Mar. 2024	Change from Mar. 2023 to Mar. 2024	
		Number	Percent
Total nonfarm	512.6	12.1	2.4
Mining, logging, and construction	32.5	0.7	2.2
Manufacturing	36.4	0.5	1.4
Trade, transportation, and utilities	96.1	3.5	3.8
Information	9.2	-0.1	-1.1
Financial activities	38.3	-1.2	-3.0
Professional and business services	73.5	0.2	0.3
Education and health services	88.9	5.9	7.1
Leisure and hospitality	52.6	1.8	3.5
Other services	16.8	0.0	0.0
Government	68.3	0.8	1.2

Source: U.S. BLS, Current Employment Statistics.



Over-the-year change in the prices paid by urban consumers for selected categories

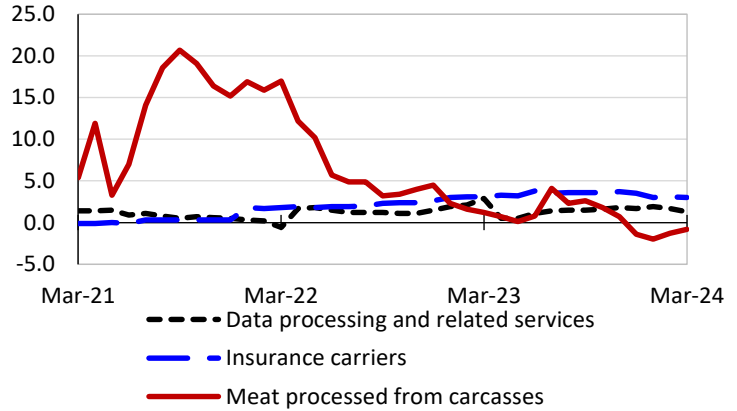
12-month percent change in CPI-U, March 2024



Source: U.S. BLS, Consumer Price Index.

Over-the-year changes in the selling prices received by producers for selected industries nationwide

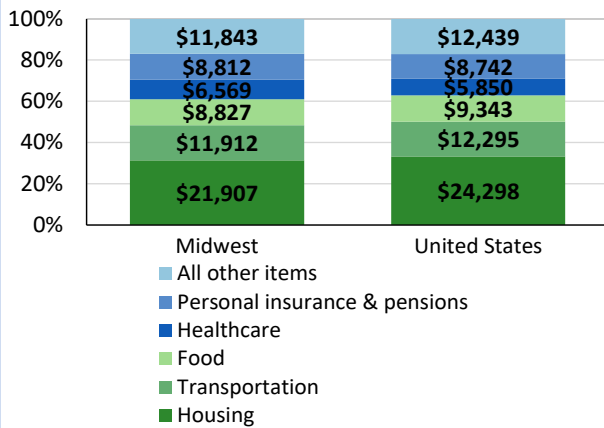
12-month percent changes in PPI



Source: U.S. BLS, Producer Price Index.

Average annual spending and percent distribution for selected categories

Average annual expenditures, United States and Midwest, 2022



Source: U.S. BLS, Consumer Expenditure Survey.

Average hourly wages for selected occupations

Occupation	Omaha area	United States
All occupations	\$29.34	\$31.48
Registered nurses	39.29	45.42
Compliance officers	32.77	38.55
Heavy and tractor-trailer truck drivers	26.43	26.92
Packaging and filling machine operators and tenders	21.44	19.81
Customer service representatives	20.02	20.92
Retail salespersons	16.67	17.64

Source: U.S. BLS, Occupational Employment and Wage Statistics, May 2023.

Employer costs per hour worked for wages and selected employee benefits by geographic division

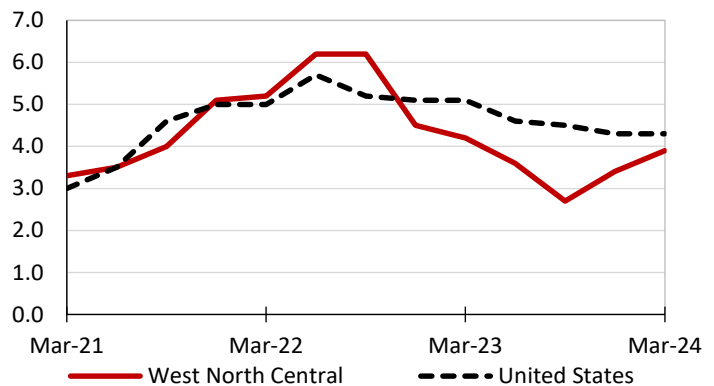
Private industry, December 2023	West North Central (1)	United States
Total compensation	\$38.45	\$43.11
Wages and salaries	26.65	30.33
Total benefits	11.80	12.77
Paid leave	2.71	3.26
Vacation	1.43	1.67
Supplemental pay	1.71	1.71
Insurance	3.37	3.14
Retirement and savings	1.17	1.50
Legally required benefits	2.83	3.17

(1) The states that compose the West North Central census division are: IA, KS, MN, MO, NE, ND, and SD.

Source: U.S. BLS, Employer Costs for Employee Compensation.

Over-the-year changes in wages and salaries

12-month percent changes in ECI



Source: U.S. BLS, Employment Cost Index.

