



**Transmission of material in this news release is embargoed until 8:30 a.m. (ET) Friday, June 2, 2023**

USDL-23-1196

Technical information:

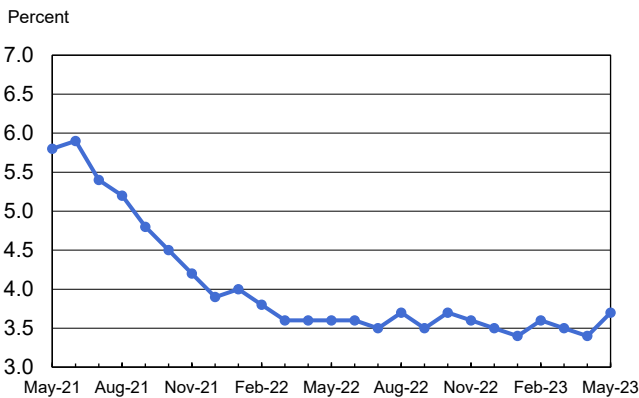
Household data: (202) 691-6378 • [cpsinfo@bls.gov](mailto:cpsinfo@bls.gov) • [www.bls.gov/cps](http://www.bls.gov/cps)  
 Establishment data: (202) 691-6555 • [cesinfo@bls.gov](mailto:cesinfo@bls.gov) • [www.bls.gov/ces](http://www.bls.gov/ces)

Media contact: (202) 691-5902 • [PressOffice@bls.gov](mailto:PressOffice@bls.gov)

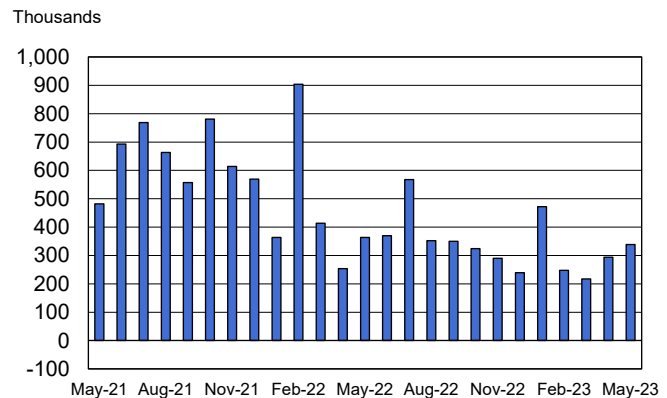
**THE EMPLOYMENT SITUATION — MAY 2023**

Total **nonfarm payroll employment** increased by 339,000 in May, and the **unemployment rate** rose by 0.3 percentage point to 3.7 percent, the U.S. Bureau of Labor Statistics reported today. Job gains occurred in professional and business services, government, health care, construction, transportation and warehousing, and social assistance.

**Chart 1. Unemployment rate, seasonally adjusted, May 2021 – May 2023**



**Chart 2. Nonfarm payroll employment over-the-month change, seasonally adjusted, May 2021 – May 2023**



This news release presents statistics from two monthly surveys. The household survey measures labor force status, including unemployment, by demographic characteristics. The establishment survey measures nonfarm employment, hours, and earnings by industry. For more information about the concepts and statistical methodology used in these two surveys, see the Technical Note.

**Household Survey Data**

The **unemployment rate** increased by 0.3 percentage point to 3.7 percent in May, and the number of **unemployed persons** rose by 440,000 to 6.1 million. The unemployment rate has ranged from 3.4 percent to 3.7 percent since March 2022. (See table A-1.)

Among the **major worker groups**, the unemployment rates for adult women (3.3 percent) and Blacks (5.6 percent) rose in May. The jobless rates for adult men (3.5 percent), teenagers (10.3 percent), Whites (3.3 percent), Asians (2.9 percent), and Hispanics (4.0 percent) showed little change over the month. (See tables A-1, A-2, and A-3.)

The number of **job losers and persons who completed temporary jobs** increased by 318,000 to 3.0 million in May, offsetting a decrease in the previous month. (See table A-11.)

In May, the number of persons **jobless less than 5 weeks** edged up by 217,000 to 2.1 million, partially offsetting a decrease in the prior month. The number of persons **jobless 15 to 26 weeks** increased by 179,000 to 858,000 in May. The number of **long-term unemployed** (those jobless for 27 weeks or more) was essentially unchanged at 1.2 million and accounted for 19.8 percent of the total unemployed. (See table A-12.)

The **labor force participation rate** held at 62.6 percent in May, and the **employment-population ratio**, at 60.3 percent, was little changed. (See table A-1.)

The number of persons employed **part time for economic reasons**, at 3.7 million, changed little in May. These individuals, who would have preferred full-time employment, were working part time because their hours had been reduced or they were unable to find full-time jobs. (See table A-8.)

The number of persons **not in the labor force who currently want a job** was 5.5 million in May, little different from the prior month. These individuals were not counted as unemployed because they were not actively looking for work during the 4 weeks preceding the survey or were unavailable to take a job. (See table A-1.)

Among those not in the labor force who wanted a job, the number of persons **marginally attached to the labor force** was little changed at 1.5 million in May. These individuals wanted and were available for work and had looked for a job sometime in the prior 12 months but had not looked for work in the 4 weeks preceding the survey. The number of **discouraged workers**, a subset of the marginally attached who believed that no jobs were available for them, was little changed over the month at 422,000. (See Summary table A.)

### **Establishment Survey Data**

Total **nonfarm payroll employment** increased by 339,000 in May, in line with the average monthly gain of 341,000 over the prior 12 months. In May, job gains occurred in professional and business services, government, health care, construction, transportation and warehousing, and social assistance. (See table B-1.)

In May, **professional and business services** added 64,000 jobs, following an increase of similar size in April. Employment growth continued in professional, scientific, and technical services, which added 43,000 jobs in May.

**Government** employment increased by 56,000 in May, compared with the average monthly gain of 42,000 over the prior 12 months. Employment in government is below its pre-pandemic February 2020 level by 209,000, or 0.9 percent.

**Health care** added 52,000 jobs in May, similar to the average monthly gain of 50,000 over the prior 12 months. In May, job growth occurred in ambulatory health care services (+24,000), hospitals (+20,000), and nursing and residential care facilities (+9,000).

Employment in **leisure and hospitality** continued to trend up in May (+48,000), largely in food services and drinking places (+33,000). Leisure and hospitality had added an average of 77,000 jobs per month over the prior 12 months. Employment in this industry remains below its February 2020 level by 349,000, or 2.1 percent.

In May, **construction** added 25,000 jobs, including 11,000 jobs in heavy and civil engineering construction. Over the prior 12 months, construction had added an average of 17,000 jobs per month.

Employment in **transportation and warehousing** increased by 24,000 in May. Transit and ground passenger transportation added 12,000 jobs, offsetting a decrease in the prior month. In May, employment also increased in couriers and messengers (+8,000) and air transportation (+3,000). Employment in transportation and warehousing has shown no clear trend in recent months.

In May, employment in **social assistance** rose by 22,000, in line with the average monthly gain of 23,000 over the prior 12 months. Over the month, individual and family services added 17,000 jobs.

Employment was little changed over the month in other major industries, including **mining, quarrying, and oil and gas extraction; manufacturing; wholesale trade; retail trade; information; financial activities; and other services**.

In May, **average hourly earnings for all employees** on private nonfarm payrolls rose by 11 cents, or 0.3 percent, to \$33.44. Over the past 12 months, average hourly earnings have increased by 4.3 percent. In May, average hourly earnings of private-sector **production and nonsupervisory employees** rose by 13 cents, or 0.5 percent, to \$28.75. (See tables B-3 and B-8.)

The **average workweek for all employees** on private nonfarm payrolls edged down by 0.1 hour to 34.3 hours in May. In manufacturing, the average workweek was unchanged at 40.1 hours, and overtime edged up by 0.1 hour to 3.0 hours. The average workweek for **production and nonsupervisory employees** on private nonfarm payrolls remained at 33.8 hours. (See tables B-2 and B-7.)

The change in total nonfarm payroll employment for March was revised up by 52,000, from +165,000 to +217,000, and the change for April was revised up by 41,000, from +253,000 to +294,000. With these revisions, employment in March and April combined is 93,000 higher than previously reported. (Monthly revisions result from additional reports received from businesses and government agencies since the last published estimates and from the recalculation of seasonal factors.)

---

**The Employment Situation for June is scheduled to be released on Friday, July 7, 2023, at 8:30 a.m. (ET).**

# HOUSEHOLD DATA

## Summary table A. Household data, seasonally adjusted

[Numbers in thousands]

Category	May 2022	Mar. 2023	Apr. 2023	May 2023	Change from: Apr. 2023-May 2023
<b>Employment status</b>					
Civilian noninstitutional population.....	263,679	266,272	266,443	266,618	175
Civilian labor force.....	164,278	166,731	166,688	166,818	130
Participation rate.....	62.3	62.6	62.6	62.6	0.0
Employed.....	158,299	160,892	161,031	160,721	-310
Employment-population ratio.....	60.0	60.4	60.4	60.3	-0.1
Unemployed.....	5,979	5,839	5,657	6,097	440
Unemployment rate.....	3.6	3.5	3.4	3.7	0.3
Not in labor force.....	99,400	99,541	99,755	99,800	45
<b>Unemployment rates</b>					
Total, 16 years and over.....	3.6	3.5	3.4	3.7	0.3
Adult men (20 years and over).....	3.4	3.4	3.3	3.5	0.2
Adult women (20 years and over).....	3.4	3.1	3.1	3.3	0.2
Teenagers (16 to 19 years).....	10.5	9.8	9.2	10.3	1.1
White.....	3.2	3.2	3.1	3.3	0.2
Black or African American.....	6.2	5.0	4.7	5.6	0.9
Asian.....	2.4	2.8	2.8	2.9	0.1
Hispanic or Latino ethnicity.....	4.4	4.6	4.4	4.0	-0.4
Total, 25 years and over.....	3.0	2.9	2.9	3.0	0.1
Less than a high school diploma.....	5.2	4.8	5.4	5.7	0.3
High school graduates, no college.....	3.8	4.0	3.9	3.9	0.0
Some college or associate degree.....	3.4	3.0	2.9	3.2	0.3
Bachelor's degree and higher.....	2.0	2.0	1.9	2.1	0.2
<b>Reason for unemployment</b>					
Job losers and persons who completed temporary jobs.....	2,732	2,949	2,642	2,960	318
Job leavers.....	766	845	790	765	-25
Reentrants.....	1,944	1,665	1,761	1,821	60
New entrants.....	530	492	531	508	-23
<b>Duration of unemployment</b>					
Less than 5 weeks.....	2,052	2,272	1,866	2,083	217
5 to 14 weeks.....	1,771	1,733	1,915	1,865	-50
15 to 26 weeks.....	687	734	679	858	179
27 weeks and over.....	1,349	1,104	1,156	1,188	32
<b>Employed persons at work part time</b>					
Part time for economic reasons.....	4,317	4,102	3,903	3,739	-164
Slack work or business conditions.....	3,000	2,873	2,760	2,582	-178
Could only find part-time work.....	984	882	817	824	7
Part time for noneconomic reasons.....	20,822	21,433	21,796	21,864	68
<b>Persons not in the labor force</b>					
Marginally attached to the labor force.....	1,477	1,289	1,480	1,508	28
Discouraged workers.....	418	351	364	422	58

NOTE: Persons whose ethnicity is identified as Hispanic or Latino may be of any race. Detail for the seasonally adjusted data shown in this table will not necessarily add to totals because of the independent seasonal adjustment of the various series. Updated population controls are introduced annually with the release of January data.

**ESTABLISHMENT DATA**  
**Summary table B. Establishment data, seasonally adjusted**

Category	May 2022	Mar. 2023	Apr. 2023 <sup>p</sup>	May 2023 <sup>p</sup>
<b>EMPLOYMENT BY SELECTED INDUSTRY</b> (Over-the-month change, in thousands)				
Total nonfarm.....	364	217	294	339
Total private.....	343	157	253	283
Goods-producing.....	61	-19	28	26
Mining and logging.....	2	2	5	3
Construction.....	38	-9	13	25
Manufacturing.....	21	-12	10	-2
Durable goods <sup>1</sup> .....	8	-5	11	3
Motor vehicles and parts.....	-6.4	4.8	9.0	6.8
Nondurable goods.....	13	-7	-1	-5
Private service-providing.....	282	176	225	257
Wholesale trade.....	18.3	3.5	2.4	1.1
Retail trade.....	-51.4	-18.9	10.0	11.6
Transportation and warehousing.....	45.3	16.2	3.7	24.2
Utilities.....	0.7	1.7	1.5	0.1
Information.....	32	3	1	-9
Financial activities.....	6	-5	25	10
Professional and business services <sup>1</sup> .....	72	45	65	64
Temporary help services.....	3.6	-3.3	-6.9	7.7
Private education and health services <sup>1</sup> .....	76	70	85	97
Health care and social assistance.....	56.9	55.9	69.1	74.6
Leisure and hospitality.....	73	46	30	48
Other services.....	10	14	2	10
Government.....	21	60	41	56
<b>(3-month average change, in thousands)</b>				
Total nonfarm.....	344	312	253	283
Total private.....	331	234	201	231
<b>WOMEN AND PRODUCTION AND NONSUPERVISORY EMPLOYEES</b> AS A PERCENT OF ALL EMPLOYEES <sup>2</sup>				
Total nonfarm women employees.....	49.7	49.8	49.8	49.8
Total private women employees.....	48.3	48.3	48.3	48.3
Total private production and nonsupervisory employees.....	81.5	81.4	81.4	81.4
<b>HOURS AND EARNINGS</b> <b>ALL EMPLOYEES</b> <b>Total private</b>				
Average weekly hours.....	34.6	34.4	34.4	34.3
Average hourly earnings.....	\$32.06	\$33.20	\$33.33	\$33.44
Average weekly earnings.....	\$1,109.28	\$1,142.08	\$1,146.55	\$1,146.99
Index of aggregate weekly hours (2007=100) <sup>3</sup> .....	112.8	114.8	115.0	114.9
Over-the-month percent change.....	0.3	-0.2	0.2	-0.1
Index of aggregate weekly payrolls (2007=100) <sup>4</sup> .....	173.0	182.2	183.2	183.7
Over-the-month percent change.....	0.6	0.1	0.5	0.3
<b>DIFFUSION INDEX</b> (Over 1-month span) <sup>5</sup>				
Total private (250 industries).....	70.6	57.0	58.8	60.2
Manufacturing (72 industries).....	68.1	43.8	44.4	47.2

<sup>1</sup> Includes other industries, not shown separately.

<sup>2</sup> Data relate to production employees in mining and logging and manufacturing, construction employees in construction, and nonsupervisory employees in the service-providing industries.

<sup>3</sup> The indexes of aggregate weekly hours are calculated by dividing the current month's estimates of aggregate hours by the corresponding annual average aggregate hours.

<sup>4</sup> The indexes of aggregate weekly payrolls are calculated by dividing the current month's estimates of aggregate weekly payrolls by the corresponding annual average aggregate weekly payrolls.

<sup>5</sup> Figures are the percent of industries with employment increasing plus one-half of the industries with unchanged employment, where 50 percent indicates an equal balance between industries with increasing and decreasing employment.

p Preliminary

NOTE: Data have been revised to reflect March 2022 benchmark levels and updated seasonal adjustment factors.

# Frequently Asked Questions about Employment and Unemployment Estimates

## 1. Why are there two monthly measures of employment?

The household survey and establishment survey both produce sample-based estimates of employment, and both have strengths and limitations. The establishment survey employment series has a smaller margin of error on the measurement of month-to-month change than the household survey because of its much larger sample size. An over-the-month employment change of about 130,000 is statistically significant in the establishment survey, while the threshold for a statistically significant change in the household survey is about 600,000. However, the household survey has a more expansive scope than the establishment survey because it includes self-employed workers whose businesses are unincorporated, unpaid family workers, agricultural workers, and private household workers, who are excluded by the establishment survey. The household survey also provides estimates of employment for demographic groups. For more information on the differences between the two surveys, please visit [www.bls.gov/web/empsit/ces\\_cps\\_trends.htm](http://www.bls.gov/web/empsit/ces_cps_trends.htm).

## 2. Are undocumented immigrants counted in the surveys?

It is likely that both surveys include at least some undocumented immigrants. However, neither the establishment nor the household survey is designed to identify the legal status of workers. Therefore, it is not possible to determine how many are counted in either survey. The establishment survey does not collect data on the legal status of workers. The household survey does include questions which identify the foreign and native born, but it does not include questions about the legal status of the foreign born. Data on the foreign and native born are published each month in table A-7 of The Employment Situation news release.

## 3. Why does the establishment survey have revisions?

The establishment survey revises published estimates to improve its data series by incorporating additional information that was not available at the time of the initial publication of the estimates. The establishment survey revises its initial monthly estimates twice, in the immediately succeeding 2 months, to incorporate additional sample receipts from respondents in the survey and recalculated seasonal adjustment factors. For more information on the monthly revisions, please visit [www.bls.gov/web/empsit/cestn.htm#section7](http://www.bls.gov/web/empsit/cestn.htm#section7).

On an annual basis, the establishment survey incorporates a benchmark revision that re-anchors estimates to nearly complete employment counts available from unemployment insurance tax records. The benchmark helps to control for sampling and modeling errors in the estimates. For more information on the annual benchmark revision, please visit [www.bls.gov/web/empsit/cesbmart.htm](http://www.bls.gov/web/empsit/cesbmart.htm).

## 4. Does the establishment survey sample include small firms?

Yes; about 40 percent of the establishment survey sample is comprised of business establishments with fewer than 20 employees. The establishment survey sample is designed to maximize the reliability of the statewide total nonfarm employment estimate; firms from all states, size classes, and industries are appropriately sampled to achieve that goal.

## **5. Does the establishment survey account for employment from new businesses?**

Yes; monthly establishment survey estimates include an adjustment to account for the net employment change generated by business births and deaths. The adjustment comes from an econometric model that forecasts the monthly net jobs impact of business births and deaths based on the actual past values of the net impact that can be observed with a lag from the Quarterly Census of Employment and Wages. The establishment survey uses modeling rather than sampling for this purpose because the survey is not immediately able to bring new businesses into the sample. There is an unavoidable lag between the birth of a new firm and its appearance on the sampling frame and availability for selection. BLS adds new businesses to the survey twice a year.

## **6. Is the count of unemployed persons limited to just those people receiving unemployment insurance benefits?**

No; the estimate of unemployment is based on a monthly sample survey of households. All persons who are without jobs and are actively seeking and available to work are included among the unemployed. (People on temporary layoff are included even if they do not actively seek work.) There is no requirement or question relating to unemployment insurance benefits in the monthly survey.

## **7. Does the official unemployment rate exclude people who want a job but are not currently looking for work?**

Yes; however, there are separate estimates of persons outside the labor force who want a job, including those who are not currently looking because they believe no jobs are available (discouraged workers). In addition, alternative measures of labor underutilization (some of which include discouraged workers and other groups not officially counted as unemployed) are published each month in table A-15 of The Employment Situation news release. For more information about these alternative measures, please visit [www.bls.gov/cps/lfcharacteristics.htm#altmeasures](http://www.bls.gov/cps/lfcharacteristics.htm#altmeasures).

## **8. How can unusually severe weather affect employment and hours estimates?**

In the establishment survey, the reference period is the pay period that includes the 12th of the month. Unusually severe weather is more likely to have an impact on average weekly hours than on employment. Average weekly hours are estimated for paid time during the pay period, including pay for holidays, sick leave, or other time off. The impact of severe weather on hours estimates typically, but not always, results in a reduction in average weekly hours. For example, some employees may be off work for part of the pay period and not receive pay for the time missed, while some workers, such as those dealing with cleanup or repair, may work extra hours.

Typically, it is not possible to precisely quantify the effect of extreme weather on payroll employment estimates. In order for severe weather conditions to reduce employment estimates, employees have to be off work without pay for the entire pay period. Employees who receive pay for any part of the pay period, even 1 hour, are counted in the payroll employment figures. For more information on how often employees are paid, please visit [www.bls.gov/ces/publications/length-pay-period.htm](http://www.bls.gov/ces/publications/length-pay-period.htm).

In the household survey, the reference period is generally the calendar week that includes the 12th of the month. Persons who miss the entire week's work for weather-related events are counted as employed whether or not they are paid for the time off. The household survey collects data on the number of persons who had a job but were not at work due to bad weather. It also provides a measure of the number of persons who usually work full time but had reduced hours due to bad weather. Current and historical data are available on the household survey's most requested statistics page, please visit [data.bls.gov/cgi-bin/surveymost?ln](http://data.bls.gov/cgi-bin/surveymost?ln).

# Technical Note

This news release presents statistics from two major surveys, the Current Population Survey (CPS; household survey) and the Current Employment Statistics survey (CES; establishment survey). The household survey provides information on the labor force, employment, and unemployment that appears in the "A" tables, marked HOUSEHOLD DATA. It is a sample survey of about 60,000 eligible households conducted by the U.S. Census Bureau for the U.S. Bureau of Labor Statistics (BLS).

The establishment survey provides information on employment, hours, and earnings of employees on nonfarm payrolls; the data appear in the "B" tables, marked ESTABLISHMENT DATA. BLS collects these data each month from the payroll records of a sample of nonagricultural business establishments. Each month the CES program surveys about 122,000 businesses and government agencies, representing approximately 666,000 individual worksites, in order to provide detailed industry data on employment, hours, and earnings of workers on nonfarm payrolls. The active sample includes approximately one-third of all nonfarm payroll jobs.

For both surveys, the data for a given month relate to a particular week or pay period. In the household survey, the reference period is generally the calendar week that contains the 12th day of the month. In the establishment survey, the reference period is the pay period including the 12th, which may or may not correspond directly to the calendar week.

## Coverage, definitions, and differences between surveys

**Household survey.** The sample is selected to reflect the entire civilian noninstitutional population. Based on responses to a series of questions on work and job search activities, each person 16 years and over in a sample household is classified as employed, unemployed, or not in the labor force.

People are classified as *employed* if they did any work at all as paid employees during the reference week; worked in their own business, profession, or on their own farm; or worked without pay at least 15 hours in a family business or farm. People are also counted as employed if they were temporarily absent from their jobs because of illness, bad weather, vacation, labor-management disputes, or personal reasons.

People are classified as *unemployed* if they meet all of the following criteria: they had no employment during the reference week; they were available for work at that time; and they made specific active efforts to find employment sometime during the 4-week period ending with the reference week. Persons laid off from a job and expecting recall need not be looking for work to be counted as unemployed. The unemployment data derived from the household survey in no way depend upon the eligibility for or receipt of unemployment insurance benefits.

The *civilian labor force* is the sum of employed and unemployed persons. Those persons not classified as employed or unemployed are *not in the labor force*. The

*unemployment rate* is the number unemployed as a percent of the labor force. The *labor force participation rate* is the labor force as a percent of the population, and the *employment-population ratio* is the employed as a percent of the population. Additional information about the household survey can be found at [www.bls.gov/cps/documentation.htm](http://www.bls.gov/cps/documentation.htm).

**Establishment survey.** The sample establishments are drawn from private nonfarm businesses such as factories, offices, and stores, as well as from federal, state, and local government entities. *Employees on nonfarm payrolls* are those who worked or received pay for any part of the reference pay period, including persons on paid leave. Persons are counted in each job they hold. *Hours and earnings* data are produced for the private sector for all employees and for production and nonsupervisory employees. *Production and nonsupervisory* employees are defined as production and related employees in manufacturing and mining and logging, construction workers in construction, and non-supervisory employees in private service-providing industries.

Industries are classified on the basis of an establishment's principal activity in accordance with the 2022 version of the North American Industry Classification System. Additional information about the establishment survey can be found at [www.bls.gov/ces/](http://www.bls.gov/ces/).

**Differences in employment estimates.** The numerous conceptual and methodological differences between the household and establishment surveys result in important distinctions in the employment estimates derived from the surveys. Among these are:

- The household survey includes agricultural workers, self-employed workers whose businesses are unincorporated, unpaid family workers, and private household workers among the employed. These groups are excluded from the establishment survey.
- The household survey includes people on unpaid leave among the employed. The establishment survey does not.
- The household survey is limited to workers 16 years of age and older. The establishment survey is not limited by age.
- The household survey has no duplication of individuals, because individuals are counted only once, even if they hold more than one job. In the establishment survey, employees working at more than one job and thus appearing on more than one payroll are counted separately for each appearance.



## Seasonal adjustment

Over the course of a year, the size of the nation's labor force and the levels of employment and unemployment undergo regularly occurring fluctuations. These events may result from seasonal changes in weather, major holidays, and the opening and closing of schools. The effect of such seasonal variation can be very large.

Because these seasonal events follow a more or less regular pattern each year, their influence on the level of a series can be tempered by adjusting for regular seasonal variation. These adjustments make nonseasonal developments, such as declines in employment or increases in the participation of women in the labor force, easier to spot. For example, in the household survey, the large number of youth entering the labor force each June is likely to obscure any other changes that have taken place relative to May, making it difficult to determine if the level of economic activity has risen or declined. Similarly, in the establishment survey, payroll employment in education declines by about 20 percent at the end of the spring term and later rises with the start of the fall term, obscuring the underlying employment trends in the industry. Because seasonal employment changes at the end and beginning of the school year can be estimated, the statistics can be adjusted to make underlying employment patterns more discernable. The seasonally adjusted figures provide a more useful tool with which to analyze changes in month-to-month economic activity.

Many seasonally adjusted series are independently adjusted in both the household and establishment surveys. However, the adjusted series for many major estimates, such as total payroll employment, employment in most major sectors, total employment, and unemployment are computed by aggregating independently adjusted component series. For example, total unemployment is derived by summing the adjusted series for four major age-sex components; this differs from the unemployment estimate that would be obtained by directly adjusting the total or by combining the duration, reasons, or more detailed age categories. Percentage distributions of unemployment by reason and duration are derived from the sum of the independently seasonally adjusted component series and will not necessarily match calculations made using the seasonally adjusted total unemployment level. Additional information about seasonal adjustment in the household survey can be found at [www.bls.gov/cps/documentation.htm#sa](http://www.bls.gov/cps/documentation.htm#sa).

For both the household and establishment surveys, a concurrent seasonal adjustment methodology is used in which new seasonal factors are calculated each month using all relevant data, up to and including the data for the current month. In the household survey, new seasonal factors are used to adjust only the current month's data. In the establishment survey, however, new seasonal factors are used each month to adjust the three most recent monthly estimates. The prior 2 months are routinely revised to incorporate additional sample reports and recalculated seasonal adjustment factors. In both surveys, 5-year revisions to historical data are made once a year.

## Reliability of the estimates

Statistics based on the household and establishment surveys are subject to both sampling and nonsampling error. When a sample, rather than the entire population, is surveyed, there is a chance that the sample estimates may differ from the true population values they represent. The component of this difference that occurs because samples differ by chance is known as *sampling error*, and its variability is measured by the standard error of the estimate. There is about a 90-percent chance, or level of confidence, that an estimate based on a sample will differ by no more than 1.6 standard errors from the true population value because of sampling error. BLS analyses are generally conducted at the 90-percent level of confidence.

For example, the confidence interval for the monthly change in total nonfarm employment from the establishment survey is on the order of plus or minus 130,000. Suppose the estimate of nonfarm employment increases by 50,000 from one month to the next. The 90-percent confidence interval on the monthly change would range from -80,000 to +180,000 (50,000 +/- 130,000). These figures do not mean that the sample results are off by these magnitudes, but rather that there is about a 90-percent chance that the true over-the-month change lies within this interval. Since this range includes values of less than zero, we could not say with confidence that nonfarm employment had, in fact, increased that month. If, however, the reported nonfarm employment rise was 250,000, then all of the values within the 90-percent confidence interval would be greater than zero. In this case, it is likely (at least a 90-percent chance) that nonfarm employment had, in fact, risen that month. At an unemployment rate of around 6.0 percent, the 90-percent confidence interval for the monthly change in unemployment as measured by the household survey is about +/- 300,000, and for the monthly change in the unemployment rate it is about +/- 0.2 percentage point.

In general, estimates involving many individuals or establishments have lower standard errors (relative to the size of the estimate) than estimates which are based on a small number of observations. The precision of estimates also is improved when the data are cumulated over time, such as for quarterly and annual averages.

The household and establishment surveys are also affected by *nonsampling error*, which can occur for many reasons, including the failure to sample a segment of the population, inability to obtain information for all respondents in the sample, inability or unwillingness of respondents to provide correct information on a timely basis, mistakes made by respondents, and errors made in the collection or processing of the data.

For example, in the establishment survey, estimates for the most recent 2 months are based on incomplete returns; for this reason, these estimates are labeled preliminary in the tables. It is only after two successive revisions to a monthly estimate, when nearly all sample reports have been received, that the estimate is considered final.

Another major source of nonsampling error in the establishment survey is the inability to capture, on a timely

basis, employment generated by new firms. To correct for this systematic underestimation of employment growth, an estimation procedure with two components is used to account for business births. The first component excludes employment losses from business deaths from sample-based estimation in order to offset the missing employment gains from business births. This is incorporated into the sample-based estimation procedure by simply not reflecting sample units going out of business, but imputing to them the same employment trend as the other firms in the sample. This procedure accounts for most of the net birth/death employment.

The second component is an ARIMA time series model designed to estimate the residual net birth/death employment not accounted for by the imputation. The historical time series used to create and test the ARIMA model was derived from the unemployment insurance universe micro-level database, and reflects the actual residual net of births and deaths over the past 5 years.

The sample-based estimates from the establishment survey are adjusted once a year (on a lagged basis) to universe counts of payroll employment obtained from administrative records of the unemployment insurance program. The difference between the March sample-based employment estimates and the March universe counts is known as a benchmark revision, and serves as a rough proxy for total survey error. The new benchmarks also incorporate changes in the classification of industries. Over the past decade, absolute benchmark revisions for total nonfarm employment have averaged 0.1 percent, with a range from -0.3 percent to 0.3 percent.

#### **Other information**

If you are deaf, hard of hearing, or have a speech disability, please dial 7-1-1 to access telecommunications relay services.

# HOUSEHOLD DATA

## Table A-1. Employment status of the civilian population by sex and age

[Numbers in thousands]

Employment status, sex, and age	Not seasonally adjusted			Seasonally adjusted <sup>1</sup>					
	May 2022	Apr. 2023	May 2023	May 2022	Jan. 2023	Feb. 2023	Mar. 2023	Apr. 2023	May 2023
<b>TOTAL</b>									
Civilian noninstitutional population.....	263,679	266,443	266,618	263,679	265,962	266,112	266,272	266,443	266,618
Civilian labor force.....	164,157	166,221	166,702	164,278	165,832	166,251	166,731	166,688	166,818
Participation rate.....	62.3	62.4	62.5	62.3	62.4	62.5	62.6	62.6	62.6
Employed.....	158,609	161,075	161,002	158,299	160,138	160,315	160,892	161,031	160,721
Employment-population ratio.....	60.2	60.5	60.4	60.0	60.2	60.2	60.4	60.4	60.3
Unemployed.....	5,548	5,146	5,700	5,979	5,694	5,936	5,839	5,657	6,097
Unemployment rate.....	3.4	3.1	3.4	3.6	3.4	3.6	3.5	3.4	3.7
Not in labor force.....	99,521	100,222	99,916	99,400	100,130	99,861	99,541	99,755	99,800
Persons who currently want a job.....	6,180	5,145	6,004	5,678	5,314	5,103	4,925	5,271	5,477
<b>Men, 16 years and over</b>									
Civilian noninstitutional population.....	128,470	130,234	130,319	128,470	129,998	130,072	130,150	130,234	130,319
Civilian labor force.....	87,312	88,437	88,701	87,288	88,334	88,474	88,999	88,686	88,704
Participation rate.....	68.0	67.9	68.1	67.9	67.9	68.0	68.4	68.1	68.1
Employed.....	84,379	85,534	85,626	84,124	85,186	85,266	85,776	85,611	85,410
Employment-population ratio.....	65.7	65.7	65.7	65.5	65.5	65.6	65.9	65.7	65.5
Unemployed.....	2,933	2,903	3,075	3,163	3,147	3,208	3,223	3,075	3,294
Unemployment rate.....	3.4	3.3	3.5	3.6	3.6	3.6	3.6	3.5	3.7
Not in labor force.....	41,158	41,797	41,618	41,182	41,665	41,597	41,151	41,548	41,616
<b>Men, 20 years and over</b>									
Civilian noninstitutional population.....	119,831	121,488	121,565	119,831	121,283	121,346	121,415	121,488	121,565
Civilian labor force.....	84,273	85,396	85,576	84,165	85,084	85,210	85,696	85,439	85,487
Participation rate.....	70.3	70.3	70.4	70.2	70.2	70.2	70.6	70.3	70.3
Employed.....	81,649	82,743	82,810	81,331	82,324	82,407	82,816	82,661	82,526
Employment-population ratio.....	68.1	68.1	68.1	67.9	67.9	67.9	68.2	68.0	67.9
Unemployed.....	2,624	2,653	2,765	2,834	2,760	2,803	2,880	2,778	2,961
Unemployment rate.....	3.1	3.1	3.2	3.4	3.2	3.3	3.4	3.3	3.5
Not in labor force.....	35,558	36,092	35,989	35,665	36,199	36,136	35,718	36,049	36,078
<b>Women, 16 years and over</b>									
Civilian noninstitutional population.....	135,209	136,209	136,299	135,209	135,963	136,040	136,122	136,209	136,299
Civilian labor force.....	76,845	77,784	78,001	76,990	77,498	77,777	77,732	78,002	78,114
Participation rate.....	56.8	57.1	57.2	56.9	57.0	57.2	57.1	57.3	57.3
Employed.....	74,230	75,541	75,376	74,174	74,952	75,049	75,115	75,420	75,311
Employment-population ratio.....	54.9	55.5	55.3	54.9	55.1	55.2	55.2	55.4	55.3
Unemployed.....	2,615	2,243	2,625	2,816	2,546	2,728	2,617	2,582	2,803
Unemployment rate.....	3.4	2.9	3.4	3.7	3.3	3.5	3.4	3.3	3.6
Not in labor force.....	58,364	58,425	58,298	58,218	58,465	58,264	58,390	58,207	58,185
<b>Women, 20 years and over</b>									
Civilian noninstitutional population.....	126,802	127,761	127,845	126,802	127,546	127,613	127,684	127,761	127,845
Civilian labor force.....	73,782	74,818	74,941	73,877	74,379	74,606	74,612	74,868	75,005
Participation rate.....	58.2	58.6	58.6	58.3	58.3	58.5	58.4	58.6	58.7
Employed.....	71,488	72,824	72,634	71,388	72,104	72,189	72,284	72,575	72,518
Employment-population ratio.....	56.4	57.0	56.8	56.3	56.5	56.6	56.6	56.8	56.7
Unemployed.....	2,293	1,994	2,307	2,489	2,275	2,417	2,328	2,293	2,486
Unemployment rate.....	3.1	2.7	3.1	3.4	3.1	3.2	3.1	3.1	3.3
Not in labor force.....	53,020	52,943	52,904	52,924	53,167	53,007	53,072	52,893	52,840
<b>Both sexes, 16 to 19 years</b>									
Civilian noninstitutional population.....	17,046	17,194	17,208	17,046	17,133	17,153	17,173	17,194	17,208
Civilian labor force.....	6,103	6,007	6,185	6,235	6,368	6,435	6,423	6,382	6,326
Participation rate.....	35.8	34.9	35.9	36.6	37.2	37.5	37.4	37.1	36.8
Employed.....	5,472	5,508	5,558	5,579	5,710	5,719	5,792	5,796	5,676
Employment-population ratio.....	32.1	32.0	32.3	32.7	33.3	33.3	33.7	33.7	33.0
Unemployed.....	631	499	628	656	658	716	631	586	650
Unemployment rate.....	10.3	8.3	10.1	10.5	10.3	11.1	9.8	9.2	10.3
Not in labor force.....	10,943	11,187	11,023	10,811	10,765	10,718	10,750	10,813	10,882

<sup>1</sup> The population figures are not adjusted for seasonal variation; therefore, identical numbers appear in the unadjusted and seasonally adjusted columns.

NOTE: Updated population controls are introduced annually with the release of January data.

**HOUSEHOLD DATA**

**Table A-2. Employment status of the civilian population by race, sex, and age**

[Numbers in thousands]

Employment status, race, sex, and age	Not seasonally adjusted			Seasonally adjusted <sup>1</sup>					
	May 2022	Apr. 2023	May 2023	May 2022	Jan. 2023	Feb. 2023	Mar. 2023	Apr. 2023	May 2023
<b>WHITE</b>									
Civilian noninstitutional population.....	203,039	204,261	204,345	203,039	204,062	204,118	204,186	204,261	204,345
Civilian labor force.....	125,560	126,873	127,111	125,721	126,699	126,756	126,933	127,174	127,273
Participation rate.....	61.8	62.1	62.2	61.9	62.1	62.1	62.2	62.3	62.3
Employed.....	121,823	123,300	123,247	121,669	122,776	122,738	122,831	123,224	123,112
Employment-population ratio.....	60.0	60.4	60.3	59.9	60.2	60.1	60.2	60.3	60.2
Unemployed.....	3,737	3,574	3,864	4,052	3,924	4,017	4,102	3,950	4,161
Unemployment rate.....	3.0	2.8	3.0	3.2	3.1	3.2	3.2	3.1	3.3
Not in labor force.....	77,479	77,388	77,233	77,318	77,362	77,362	77,253	77,087	77,072
<b>Men, 20 years and over</b>									
Civilian labor force.....	65,632	66,340	66,450	65,618	66,118	66,083	66,304	66,299	66,433
Participation rate.....	70.1	70.2	70.3	70.0	70.0	69.9	70.2	70.1	70.2
Employed.....	63,780	64,496	64,521	63,589	64,210	64,125	64,287	64,363	64,343
Employment-population ratio.....	68.1	68.2	68.2	67.9	68.0	67.9	68.0	68.1	68.0
Unemployed.....	1,852	1,844	1,928	2,029	1,908	1,958	2,018	1,936	2,089
Unemployment rate.....	2.8	2.8	2.9	3.1	2.9	3.0	3.0	2.9	3.1
<b>Women, 20 years and over</b>									
Civilian labor force.....	55,208	55,825	55,878	55,299	55,637	55,733	55,656	55,882	55,950
Participation rate.....	57.0	57.4	57.5	57.1	57.3	57.4	57.3	57.5	57.5
Employed.....	53,754	54,463	54,379	53,715	54,093	54,142	53,994	54,304	54,323
Employment-population ratio.....	55.5	56.0	55.9	55.4	55.7	55.7	55.6	55.9	55.9
Unemployed.....	1,455	1,361	1,499	1,585	1,544	1,591	1,661	1,578	1,627
Unemployment rate.....	2.6	2.4	2.7	2.9	2.8	2.9	3.0	2.8	2.9
<b>Both sexes, 16 to 19 years</b>									
Civilian labor force.....	4,719	4,709	4,784	4,803	4,944	4,940	4,973	4,993	4,890
Participation rate.....	37.8	37.7	38.2	38.5	39.6	39.6	39.8	39.9	39.1
Employed.....	4,289	4,340	4,347	4,366	4,472	4,471	4,550	4,557	4,445
Employment-population ratio.....	34.4	34.7	34.7	35.0	35.8	35.8	36.4	36.4	35.5
Unemployed.....	430	369	437	438	472	469	423	436	445
Unemployment rate.....	9.1	7.8	9.1	9.1	9.5	9.5	8.5	8.7	9.1
<b>BLACK OR AFRICAN AMERICAN</b>									
Civilian noninstitutional population.....	34,079	34,583	34,613	34,079	34,487	34,519	34,550	34,583	34,613
Civilian labor force.....	21,441	21,756	21,878	21,464	21,697	21,893	22,152	21,790	21,874
Participation rate.....	62.9	62.9	63.2	63.0	62.9	63.4	64.1	63.0	63.2
Employed.....	20,147	20,809	20,662	20,125	20,535	20,654	21,037	20,766	20,641
Employment-population ratio.....	59.1	60.2	59.7	59.1	59.5	59.8	60.9	60.0	59.6
Unemployed.....	1,294	947	1,216	1,339	1,162	1,239	1,114	1,025	1,234
Unemployment rate.....	6.0	4.4	5.6	6.2	5.4	5.7	5.0	4.7	5.6
Not in labor force.....	12,638	12,827	12,735	12,615	12,790	12,626	12,399	12,793	12,738
<b>Men, 20 years and over</b>									
Civilian labor force.....	9,993	9,986	10,103	9,975	10,115	10,218	10,400	10,005	10,084
Participation rate.....	69.0	67.6	68.4	68.9	68.7	69.3	70.5	67.8	68.2
Employed.....	9,430	9,540	9,536	9,409	9,579	9,700	9,860	9,556	9,519
Employment-population ratio.....	65.1	64.6	64.5	65.0	65.0	65.8	66.8	64.7	64.4
Unemployed.....	563	447	567	567	535	518	539	449	565
Unemployment rate.....	5.6	4.5	5.6	5.7	5.3	5.1	5.2	4.5	5.6
<b>Women, 20 years and over</b>									
Civilian labor force.....	10,705	11,082	11,058	10,725	10,804	10,877	10,986	11,054	11,051
Participation rate.....	62.5	64.1	63.9	62.7	62.6	63.0	63.6	63.9	63.9
Employed.....	10,115	10,658	10,491	10,095	10,301	10,319	10,522	10,573	10,469
Employment-population ratio.....	59.1	61.6	60.6	59.0	59.7	59.8	60.9	61.1	60.5
Unemployed.....	590	423	567	630	504	558	464	481	582
Unemployment rate.....	5.5	3.8	5.1	5.9	4.7	5.1	4.2	4.4	5.3
<b>Both sexes, 16 to 19 years</b>									
Civilian labor force.....	743	688	717	764	778	797	766	732	740
Participation rate.....	30.0	27.2	28.3	30.9	31.0	31.7	30.4	29.0	29.2
Employed.....	602	611	635	622	655	635	655	637	653
Employment-population ratio.....	24.3	24.2	25.1	25.1	26.1	25.2	26.0	25.2	25.8
Unemployed.....	140	77	82	142	123	163	111	95	87
Unemployment rate.....	18.9	11.2	11.4	18.6	15.8	20.4	14.5	12.9	11.7

See footnotes at end of table.

**HOUSEHOLD DATA**

**Table A-2. Employment status of the civilian population by race, sex, and age — Continued**

[Numbers in thousands]

Employment status, race, sex, and age	Not seasonally adjusted			Seasonally adjusted <sup>1</sup>					
	May 2022	Apr. 2023	May 2023	May 2022	Jan. 2023	Feb. 2023	Mar. 2023	Apr. 2023	May 2023
<b>ASIAN</b>									
Civilian noninstitutional population.....	16,815	17,557	17,511	16,815	17,541	17,444	17,545	17,557	17,511
Civilian labor force.....	10,854	11,319	11,348	10,916	11,240	11,348	11,390	11,396	11,408
Participation rate.....	64.5	64.5	64.8	64.9	64.1	65.1	64.9	64.9	65.1
Employed.....	10,613	11,017	11,034	10,652	10,926	10,962	11,067	11,073	11,073
Employment-population ratio.....	63.1	62.7	63.0	63.4	62.3	62.8	63.1	63.1	63.2
Unemployed.....	241	302	315	263	313	386	323	323	335
Unemployment rate.....	2.2	2.7	2.8	2.4	2.8	3.4	2.8	2.8	2.9
Not in labor force.....	5,961	6,238	6,163	5,899	6,301	6,096	6,154	6,162	6,104

<sup>1</sup> The population figures are not adjusted for seasonal variation; therefore, identical numbers appear in the unadjusted and seasonally adjusted columns.

NOTE: Estimates for the above race groups will not sum to totals shown in table A-1 because data are not presented for all races. Updated population controls are introduced annually with the release of January data.

**HOUSEHOLD DATA**

**Table A-3. Employment status of the Hispanic or Latino population by sex and age**

[Numbers in thousands]

Employment status, sex, and age	Not seasonally adjusted			Seasonally adjusted <sup>1</sup>					
	May 2022	Apr. 2023	May 2023	May 2022	Jan. 2023	Feb. 2023	Mar. 2023	Apr. 2023	May 2023
<b>HISPANIC OR LATINO ETHNICITY</b>									
Civilian noninstitutional population.....	46,039	47,288	47,380	46,039	47,010	47,103	47,194	47,288	47,380
Civilian labor force.....	30,512	31,506	31,612	30,622	31,153	31,444	31,517	31,589	31,690
Participation rate.....	66.3	66.6	66.7	66.5	66.3	66.8	66.8	66.8	66.9
Employed.....	29,305	30,234	30,471	29,270	29,737	29,789	30,071	30,185	30,407
Employment-population ratio.....	63.7	63.9	64.3	63.6	63.3	63.2	63.7	63.8	64.2
Unemployed.....	1,207	1,273	1,140	1,352	1,416	1,655	1,446	1,404	1,283
Unemployment rate.....	4.0	4.0	3.6	4.4	4.5	5.3	4.6	4.4	4.0
Not in labor force.....	15,527	15,782	15,768	15,417	15,857	15,659	15,677	15,699	15,690
<b>Men, 20 years and over</b>									
Civilian labor force.....	16,693	16,970	17,113	16,725	16,795	16,882	16,969	16,956	17,123
Participation rate.....	80.0	79.0	79.5	80.2	78.6	78.8	79.1	78.9	79.5
Employed.....	16,199	16,316	16,512	16,133	16,073	16,036	16,293	16,260	16,434
Employment-population ratio.....	77.7	75.9	76.7	77.3	75.2	74.9	76.0	75.7	76.3
Unemployed.....	494	654	601	592	722	846	676	696	690
Unemployment rate.....	3.0	3.9	3.5	3.5	4.3	5.0	4.0	4.1	4.0
<b>Women, 20 years and over</b>									
Civilian labor force.....	12,430	13,071	13,120	12,472	13,024	13,085	13,069	13,111	13,150
Participation rate.....	59.4	61.0	61.1	59.6	61.1	61.3	61.1	61.2	61.2
Employed.....	11,874	12,583	12,707	11,885	12,447	12,460	12,482	12,576	12,700
Employment-population ratio.....	56.7	58.7	59.2	56.8	58.4	58.4	58.4	58.7	59.1
Unemployed.....	556	489	413	587	577	626	587	534	450
Unemployment rate.....	4.5	3.7	3.1	4.7	4.4	4.8	4.5	4.1	3.4
<b>Both sexes, 16 to 19 years</b>									
Civilian labor force.....	1,389	1,465	1,379	1,425	1,334	1,477	1,479	1,522	1,417
Participation rate.....	32.6	33.6	31.5	33.5	30.8	34.0	34.0	34.9	32.4
Employed.....	1,231	1,335	1,253	1,252	1,217	1,294	1,296	1,349	1,273
Employment-population ratio.....	29.0	30.6	28.6	29.4	28.1	29.8	29.8	30.9	29.1
Unemployed.....	157	130	126	173	116	183	183	174	144
Unemployment rate.....	11.3	8.9	9.2	12.2	8.7	12.4	12.4	11.4	10.1

<sup>1</sup> The population figures are not adjusted for seasonal variation; therefore, identical numbers appear in the unadjusted and seasonally adjusted columns.

NOTE: Persons whose ethnicity is identified as Hispanic or Latino may be of any race. Updated population controls are introduced annually with the release of January data.

**HOUSEHOLD DATA**

**Table A-4. Employment status of the civilian population 25 years and over by educational attainment**

[Numbers in thousands]

Educational attainment	Not seasonally adjusted			Seasonally adjusted					
	May 2022	Apr. 2023	May 2023	May 2022	Jan. 2023	Feb. 2023	Mar. 2023	Apr. 2023	May 2023
<b>Less than a high school diploma</b>									
Civilian labor force.....	9,399	9,194	9,381	9,166	8,814	9,165	9,203	9,082	9,140
Participation rate.....	45.0	46.9	46.9	43.9	46.0	48.3	46.6	46.3	45.7
Employed.....	8,975	8,705	8,907	8,691	8,417	8,629	8,762	8,595	8,621
Employment-population ratio.....	43.0	44.4	44.6	41.6	43.9	45.5	44.3	43.8	43.1
Unemployed.....	425	489	474	475	397	536	441	487	519
Unemployment rate.....	4.5	5.3	5.1	5.2	4.5	5.8	4.8	5.4	5.7
<b>High school graduates, no college<sup>1</sup></b>									
Civilian labor force.....	36,088	35,840	36,087	36,040	36,189	35,850	35,680	35,752	36,022
Participation rate.....	56.8	56.5	56.9	56.7	56.4	56.0	56.1	56.4	56.8
Employed.....	34,826	34,491	34,767	34,684	34,836	34,574	34,246	34,345	34,611
Employment-population ratio.....	54.8	54.4	54.9	54.5	54.3	54.0	53.8	54.2	54.6
Unemployed.....	1,262	1,349	1,320	1,356	1,353	1,276	1,433	1,407	1,411
Unemployment rate.....	3.5	3.8	3.7	3.8	3.7	3.6	4.0	3.9	3.9
<b>Some college or associate degree</b>									
Civilian labor force.....	35,739	35,685	35,277	35,787	36,082	35,962	35,944	35,668	35,407
Participation rate.....	63.4	63.0	62.9	63.5	63.5	63.6	63.6	63.0	63.1
Employed.....	34,600	34,730	34,203	34,570	35,046	34,796	34,877	34,650	34,273
Employment-population ratio.....	61.4	61.3	61.0	61.3	61.7	61.5	61.8	61.2	61.1
Unemployed.....	1,139	955	1,073	1,217	1,036	1,167	1,067	1,018	1,134
Unemployment rate.....	3.2	2.7	3.0	3.4	2.9	3.2	3.0	2.9	3.2
<b>Bachelor's degree and higher<sup>2</sup></b>									
Civilian labor force.....	62,162	64,050	64,067	62,347	62,854	63,140	63,632	64,077	64,201
Participation rate.....	73.2	73.2	73.0	73.4	72.7	72.3	73.1	73.3	73.1
Employed.....	61,069	62,929	62,857	61,125	61,591	61,858	62,355	62,835	62,879
Employment-population ratio.....	71.9	71.9	71.6	72.0	71.2	70.9	71.6	71.8	71.6
Unemployed.....	1,093	1,120	1,210	1,222	1,263	1,282	1,278	1,241	1,322
Unemployment rate.....	1.8	1.7	1.9	2.0	2.0	2.0	2.0	1.9	2.1

<sup>1</sup> Includes persons with a high school diploma or equivalent.

<sup>2</sup> Includes persons with bachelor's, master's, professional, and doctoral degrees.

NOTE: Detail for the seasonally adjusted data shown in this table will not necessarily add to totals for those 25 years and over because of the independent seasonal adjustment of the various series. Updated population controls are introduced annually with the release of January data.

# HOUSEHOLD DATA

**Table A-5. Employment status of the civilian population 18 years and over by veteran status, period of service, and sex, not seasonally adjusted**

[Numbers in thousands]

Employment status, veteran status, and period of service	Total		Men		Women	
	May 2022	May 2023	May 2022	May 2023	May 2022	May 2023
<b>VETERANS, 18 years and over</b>						
Civilian noninstitutional population.....	18,403	17,940	16,378	15,901	2,025	2,039
Civilian labor force.....	8,790	8,653	7,605	7,525	1,185	1,128
Participation rate.....	47.8	48.2	46.4	47.3	58.5	55.3
Employed.....	8,548	8,437	7,381	7,327	1,168	1,111
Employment-population ratio.....	46.4	47.0	45.1	46.1	57.7	54.5
Unemployed.....	242	215	224	198	18	17
Unemployment rate.....	2.7	2.5	2.9	2.6	1.5	1.5
Not in labor force.....	9,613	9,287	8,773	8,376	840	911
<b>Gulf War-era II veterans</b>						
Civilian noninstitutional population.....	4,936	5,048	4,031	4,132	906	915
Civilian labor force.....	3,928	3,992	3,292	3,349	636	643
Participation rate.....	79.6	79.1	81.7	81.0	70.2	70.2
Employed.....	3,801	3,924	3,180	3,285	621	639
Employment-population ratio.....	77.0	77.7	78.9	79.5	68.6	69.8
Unemployed.....	126	68	112	64	15	4
Unemployment rate.....	3.2	1.7	3.4	1.9	2.3	0.7
Not in labor force.....	1,009	1,056	739	783	270	272
<b>Gulf War-era I veterans</b>						
Civilian noninstitutional population.....	3,182	2,929	2,722	2,481	459	449
Civilian labor force.....	2,267	2,119	1,955	1,815	312	304
Participation rate.....	71.3	72.3	71.8	73.2	68.0	67.8
Employed.....	2,210	2,050	1,900	1,753	310	297
Employment-population ratio.....	69.5	70.0	69.8	70.7	67.6	66.2
Unemployed.....	57	69	55	62	2	7
Unemployment rate.....	2.5	3.3	2.8	3.4	0.7	2.2
Not in labor force.....	914	810	767	665	147	145
<b>World War II, Korean War, and Vietnam-era veterans</b>						
Civilian noninstitutional population.....	6,274	6,009	6,024	5,754	250	255
Civilian labor force.....	926	828	881	807	44	21
Participation rate.....	14.8	13.8	14.6	14.0	17.7	8.4
Employed.....	899	790	855	769	44	21
Employment-population ratio.....	14.3	13.1	14.2	13.4	17.7	8.4
Unemployed.....	26	38	26	38	0	0
Unemployment rate.....	2.8	4.6	3.0	4.7	-	-
Not in labor force.....	5,348	5,181	5,143	4,947	206	234
<b>Veterans of other service periods</b>						
Civilian noninstitutional population.....	4,011	3,954	3,601	3,534	410	420
Civilian labor force.....	1,669	1,714	1,477	1,554	193	160
Participation rate.....	41.6	43.3	41.0	44.0	47.0	38.0
Employed.....	1,637	1,674	1,446	1,520	192	153
Employment-population ratio.....	40.8	42.3	40.1	43.0	46.8	36.5
Unemployed.....	32	40	31	34	1	6
Unemployment rate.....	1.9	2.3	2.1	2.2	0.5	3.8
Not in labor force.....	2,342	2,240	2,124	1,980	217	260
<b>NONVETERANS, 18 years and over</b>						
Civilian noninstitutional population.....	236,329	239,361	107,735	109,797	128,593	129,564
Civilian labor force.....	153,054	155,701	78,607	80,099	74,448	75,602
Participation rate.....	64.8	65.0	73.0	73.0	57.9	58.4
Employed.....	147,993	150,450	75,999	77,309	71,995	73,141
Employment-population ratio.....	62.6	62.9	70.5	70.4	56.0	56.5
Unemployed.....	5,061	5,251	2,608	2,790	2,453	2,461
Unemployment rate.....	3.3	3.4	3.3	3.5	3.3	3.3
Not in labor force.....	83,274	83,660	29,129	29,698	54,146	53,962

NOTE: Veterans served on active duty in the U.S. Armed Forces and were not on active duty at the time of the survey. Nonveterans never served on active duty in the U.S. Armed Forces. Veterans could have served anywhere in the world during these periods of service: Gulf War era II (September 2001-present), Gulf War era I (August 1990-August 2001), Vietnam era (August 1964-April 1975), Korean War (July 1950-January 1955), World War II (December 1941-December 1946), and other service periods (all other time periods). Veterans who served in more than one wartime period are classified only in the most recent one. Veterans who served during one of the selected wartime periods and another period are classified only in the wartime period. Dash indicates no data or data that do not meet publication criteria (values not shown where base is less than 75,000).



**HOUSEHOLD DATA**

**Table A-6. Employment status of the civilian population by sex, age, and disability status, not seasonally adjusted**

[Numbers in thousands]

Employment status, sex, and age	Persons with a disability		Persons with no disability	
	May 2022	May 2023	May 2022	May 2023
<b>TOTAL, 16 years and over</b>				
Civilian noninstitutional population.....	32,686	33,295	230,993	233,323
Civilian labor force.....	7,497	8,098	156,661	158,604
Participation rate.....	22.9	24.3	67.8	68.0
Employed.....	6,961	7,463	151,649	153,540
Employment-population ratio.....	21.3	22.4	65.7	65.8
Unemployed.....	536	635	5,012	5,064
Unemployment rate.....	7.1	7.8	3.2	3.2
Not in labor force.....	25,189	25,197	74,332	74,719
<b>Men, 16 to 64 years</b>				
Civilian labor force.....	3,086	3,330	78,119	79,343
Participation rate.....	38.3	41.0	82.5	82.7
Employed.....	2,834	3,075	75,607	76,703
Employment-population ratio.....	35.2	37.9	79.9	80.0
Unemployed.....	252	255	2,512	2,640
Unemployment rate.....	8.2	7.7	3.2	3.3
Not in labor force.....	4,974	4,785	16,558	16,586
<b>Women, 16 to 64 years</b>				
Civilian labor force.....	3,074	3,320	69,039	69,631
Participation rate.....	36.2	39.4	71.9	72.4
Employed.....	2,842	3,022	66,794	67,444
Employment-population ratio.....	33.5	35.9	69.6	70.2
Unemployed.....	232	299	2,245	2,187
Unemployment rate.....	7.5	9.0	3.3	3.1
Not in labor force.....	5,406	5,105	26,978	26,510
<b>Both sexes, 65 years and over</b>				
Civilian labor force.....	1,337	1,448	9,502	9,631
Participation rate.....	8.3	8.6	23.6	23.3
Employed.....	1,285	1,366	9,248	9,393
Employment-population ratio.....	8.0	8.2	22.9	22.8
Unemployed.....	52	82	255	238
Unemployment rate.....	3.9	5.6	2.7	2.5
Not in labor force.....	14,810	15,307	30,796	31,623

NOTE: A person with a disability has at least one of the following conditions: is deaf or has serious difficulty hearing; is blind or has serious difficulty seeing even when wearing glasses; has serious difficulty concentrating, remembering, or making decisions because of a physical, mental, or emotional condition; has serious difficulty walking or climbing stairs; has difficulty dressing or bathing; or has difficulty doing errands alone such as visiting a doctor's office or shopping because of a physical, mental, or emotional condition. Updated population controls are introduced annually with the release of January data.

**HOUSEHOLD DATA**

**Table A-7. Employment status of the civilian population by nativity and sex, not seasonally adjusted**

[Numbers in thousands]

Employment status and nativity	Total		Men		Women	
	May 2022	May 2023	May 2022	May 2023	May 2022	May 2023
<b>Foreign born, 16 years and over</b>						
Civilian noninstitutional population.....	45,230	46,769	22,058	22,952	23,172	23,818
Civilian labor force.....	29,648	31,249	16,949	17,763	12,699	13,486
Participation rate.....	65.5	66.8	76.8	77.4	54.8	56.6
Employed.....	28,690	30,259	16,432	17,216	12,258	13,043
Employment-population ratio.....	63.4	64.7	74.5	75.0	52.9	54.8
Unemployed.....	958	990	516	547	441	443
Unemployment rate.....	3.2	3.2	3.0	3.1	3.5	3.3
Not in labor force.....	15,582	15,520	5,110	5,188	10,473	10,332
<b>Native born, 16 years and over</b>						
Civilian noninstitutional population.....	218,448	219,849	106,412	107,368	112,037	112,481
Civilian labor force.....	134,509	135,453	70,364	70,938	64,146	64,516
Participation rate.....	61.6	61.6	66.1	66.1	57.3	57.4
Employed.....	129,919	130,744	67,947	68,410	61,972	62,333
Employment-population ratio.....	59.5	59.5	63.9	63.7	55.3	55.4
Unemployed.....	4,590	4,710	2,417	2,527	2,173	2,182
Unemployment rate.....	3.4	3.5	3.4	3.6	3.4	3.4
Not in labor force.....	83,939	84,396	36,048	36,430	47,891	47,966

NOTE: The foreign born are those residing in the United States who were not U.S. citizens at birth. That is, they were born outside the United States or one of its outlying areas such as Puerto Rico or Guam, to parents neither of whom was a U.S. citizen. The native born are persons who were born in the United States or one of its outlying areas such as Puerto Rico or Guam or who were born abroad of at least one parent who was a U.S. citizen. Updated population controls are introduced annually with the release of January data.

# HOUSEHOLD DATA

## Table A-8. Employed persons by class of worker and part-time status

[In thousands]

Category	Not seasonally adjusted			Seasonally adjusted					
	May 2022	Apr. 2023	May 2023	May 2022	Jan. 2023	Feb. 2023	Mar. 2023	Apr. 2023	May 2023
<b>CLASS OF WORKER</b>									
Agriculture and related industries.....	2,399	2,231	2,358	2,339	2,245	2,346	2,226	2,301	2,301
Wage and salary workers <sup>1</sup> .....	1,574	1,472	1,615	1,544	1,485	1,521	1,509	1,536	1,569
Self-employed workers, unincorporated.....	801	713	694	775	720	781	666	715	672
Unpaid family workers.....	24	46	50	-	-	-	-	-	-
Nonagricultural industries.....	156,210	158,844	158,644	155,987	157,645	157,743	158,318	158,639	158,416
Wage and salary workers <sup>1</sup> .....	146,725	149,752	149,753	146,484	148,822	148,723	149,479	149,383	149,512
Government.....	20,985	21,893	21,487	20,909	21,548	21,501	21,467	21,678	21,434
Private industries.....	125,740	127,860	128,266	125,592	126,981	126,967	127,750	127,655	128,050
Private households.....	610	613	643	-	-	-	-	-	-
Other industries.....	125,130	127,247	127,624	124,922	126,248	126,261	127,055	126,942	127,337
Self-employed workers, unincorporated.....	9,410	9,035	8,820	9,280	9,217	9,338	9,173	9,100	8,731
Unpaid family workers.....	75	57	71	-	-	-	-	-	-
<b>PERSONS AT WORK PART TIME<sup>2</sup></b>									
<b>  All industries</b>									
Part time for economic reasons <sup>3</sup> .....	4,115	3,692	3,535	4,317	4,050	4,067	4,102	3,903	3,739
Slack work or business conditions.....	2,858	2,612	2,435	3,000	2,685	2,840	2,873	2,760	2,582
Could only find part-time work.....	1,002	823	835	984	999	859	882	817	824
Part time for noneconomic reasons <sup>4</sup> .....	20,822	22,453	21,884	20,822	22,083	21,856	21,433	21,796	21,864
<b>    Nonagricultural industries</b>									
Part time for economic reasons <sup>3</sup> .....	4,033	3,627	3,518	4,223	3,959	3,964	4,037	3,841	3,725
Slack work or business conditions.....	2,796	2,570	2,428	2,929	2,646	2,750	2,822	2,715	2,566
Could only find part-time work.....	993	813	835	974	988	842	872	807	821
Part time for noneconomic reasons <sup>4</sup> .....	20,447	22,058	21,515	20,453	21,674	21,453	21,069	21,400	21,496

<sup>1</sup> Includes self-employed workers whose businesses are incorporated.

<sup>2</sup> Refers to those who worked 1 to 34 hours during the survey reference week and excludes employed persons who were absent from their jobs for the entire week.

<sup>3</sup> Refers to those who worked 1 to 34 hours during the reference week for an economic reason such as slack work or unfavorable business conditions, inability to find full-time work, or seasonal declines in demand.

<sup>4</sup> Refers to persons who usually work part time for noneconomic reasons such as childcare problems, family or personal obligations, school or training, retirement or Social Security limits on earnings, and other reasons. This excludes persons who usually work full time but worked only 1 to 34 hours during the reference week for reasons such as vacations, holidays, illness, and bad weather.

- Data not available.

NOTE: Detail for the seasonally adjusted data shown in this table will not necessarily add to totals because of the independent seasonal adjustment of the various series. Updated population controls are introduced annually with the release of January data.

# HOUSEHOLD DATA

## Table A-9. Selected employment indicators

[Numbers in thousands]

Characteristic	Not seasonally adjusted			Seasonally adjusted					
	May 2022	Apr. 2023	May 2023	May 2022	Jan. 2023	Feb. 2023	Mar. 2023	Apr. 2023	May 2023
<b>AGE AND SEX</b>									
Total, 16 years and over.....	158,609	161,075	161,002	158,299	160,138	160,315	160,892	161,031	160,721
16 to 19 years.....	5,472	5,508	5,558	5,579	5,710	5,719	5,792	5,796	5,676
16 to 17 years.....	2,068	2,027	2,115	2,186	2,265	2,200	2,227	2,209	2,240
18 to 19 years.....	3,404	3,481	3,443	3,402	3,462	3,534	3,589	3,594	3,450
20 years and over.....	153,137	155,567	155,445	152,719	154,428	154,597	155,100	155,236	155,045
20 to 24 years.....	13,667	14,711	14,711	13,766	14,705	14,831	14,896	14,843	14,816
25 years and over.....	139,471	140,856	140,734	139,050	139,834	139,939	140,372	140,452	140,314
25 to 54 years.....	101,954	103,484	103,443	101,752	102,366	102,838	103,121	103,220	103,209
25 to 34 years.....	35,609	35,957	35,897	35,535	35,594	35,799	35,780	35,866	35,814
35 to 44 years.....	34,773	35,385	35,343	34,683	35,010	35,243	35,492	35,285	35,257
45 to 54 years.....	31,573	32,142	32,202	31,534	31,762	31,796	31,849	32,069	32,138
55 years and over.....	37,516	37,372	37,291	37,298	37,468	37,100	37,250	37,232	37,105
Men, 16 years and over.....	84,379	85,534	85,626	84,124	85,186	85,266	85,776	85,611	85,410
16 to 19 years.....	2,730	2,791	2,816	2,793	2,862	2,859	2,961	2,951	2,884
16 to 17 years.....	1,000	1,007	991	1,046	1,039	1,020	1,134	1,079	1,043
18 to 19 years.....	1,730	1,784	1,825	1,748	1,838	1,851	1,850	1,878	1,844
20 years and over.....	81,649	82,743	82,810	81,331	82,324	82,407	82,816	82,661	82,526
20 to 24 years.....	6,991	7,424	7,489	7,011	7,354	7,484	7,687	7,491	7,509
25 years and over.....	74,658	75,319	75,321	74,426	75,036	75,070	75,249	75,207	75,088
25 to 54 years.....	54,412	55,247	55,321	54,286	54,708	55,033	55,232	55,184	55,174
25 to 34 years.....	18,832	19,148	19,184	18,803	18,916	19,167	19,140	19,134	19,145
35 to 44 years.....	18,708	19,036	19,060	18,646	18,896	18,965	19,115	18,997	18,998
45 to 54 years.....	16,872	17,062	17,078	16,837	16,896	16,901	16,977	17,053	17,031
55 years and over.....	20,246	20,072	20,000	20,139	20,328	20,037	20,017	20,023	19,914
Women, 16 years and over.....	74,230	75,541	75,376	74,174	74,952	75,049	75,115	75,420	75,311
16 to 19 years.....	2,742	2,716	2,742	2,786	2,848	2,860	2,831	2,845	2,793
16 to 17 years.....	1,068	1,020	1,124	1,140	1,226	1,179	1,093	1,130	1,196
18 to 19 years.....	1,674	1,696	1,618	1,654	1,624	1,683	1,738	1,716	1,606
20 years and over.....	71,488	72,824	72,634	71,388	72,104	72,189	72,284	72,575	72,518
20 to 24 years.....	6,676	7,287	7,222	6,755	7,351	7,347	7,209	7,353	7,307
25 years and over.....	64,813	65,537	65,413	64,624	64,798	64,868	65,123	65,245	65,226
25 to 54 years.....	47,543	48,237	48,121	47,465	47,658	47,805	47,889	48,036	48,035
25 to 34 years.....	16,777	16,808	16,714	16,731	16,678	16,633	16,640	16,732	16,669
35 to 44 years.....	16,065	16,349	16,283	16,037	16,114	16,278	16,377	16,288	16,259
45 to 54 years.....	14,701	15,080	15,124	14,697	14,866	14,895	14,872	15,016	15,107
55 years and over.....	17,270	17,300	17,291	17,158	17,140	17,063	17,234	17,209	17,191
<b>MARITAL STATUS</b>									
Married men, spouse present <sup>1</sup> .....	45,531	46,330	45,758	45,327	46,119	46,387	46,341	46,124	45,647
Married women, spouse present <sup>1</sup> .....	36,455	37,358	37,072	36,364	36,490	36,883	36,759	37,140	36,964
Women who maintain families <sup>2</sup> .....	10,019	9,648	9,683	-	-	-	-	-	-
<b>FULL- OR PART-TIME STATUS</b>									
Full-time workers <sup>3</sup> .....	132,820	133,886	134,581	132,743	132,577	133,184	134,339	134,500	134,477
Part-time workers <sup>4</sup> .....	25,789	27,189	26,421	25,770	27,400	27,089	26,747	26,663	26,443
<b>MULTIPLE JOBHOLDERS</b>									
Total multiple jobholders.....	7,313	7,676	7,718	7,334	8,001	7,904	7,979	7,707	7,762
Percent of total employed.....	4.6	4.8	4.8	4.6	5.0	4.9	5.0	4.8	4.8
<b>SELF-EMPLOYMENT</b>									
Self-employed workers, incorporated.....	6,823	6,404	6,706	-	-	-	-	-	-
Self-employed workers, unincorporated.....	10,211	9,748	9,514	10,054	9,937	10,119	9,839	9,815	9,403

<sup>1</sup> Beginning with data for January 2020, refers to persons in both opposite-sex and same-sex married couples. Prior to January 2020, referred to persons in opposite-sex married couples only.

<sup>2</sup> Beginning with data for January 2020, refers to female householders residing with one or more family members, but not a spouse of either sex. Prior to January 2020, referred to female householders residing with one or more family members, but not an opposite-sex spouse.

<sup>3</sup> Employed full-time workers are persons who usually work 35 hours or more per week.

<sup>4</sup> Employed part-time workers are persons who usually work less than 35 hours per week.

- Data not available.

NOTE: Detail for the seasonally adjusted data shown in this table will not necessarily add to totals because of the independent seasonal adjustment of the various series. Updated population controls are introduced annually with the release of January data.

# HOUSEHOLD DATA

## Table A-10. Selected unemployment indicators, seasonally adjusted

Characteristic	Number of unemployed persons (in thousands)			Unemployment rates					
	May 2022	Apr. 2023	May 2023	May 2022	Jan. 2023	Feb. 2023	Mar. 2023	Apr. 2023	May 2023
<b>AGE AND SEX</b>									
Total, 16 years and over.....	5,979	5,657	6,097	3.6	3.4	3.6	3.5	3.4	3.7
16 to 19 years.....	656	586	650	10.5	10.3	11.1	9.8	9.2	10.3
16 to 17 years.....	251	230	235	10.3	10.9	9.0	9.1	9.4	9.5
18 to 19 years.....	396	374	407	10.4	10.0	12.1	10.3	9.4	10.6
20 years and over.....	5,323	5,071	5,447	3.4	3.2	3.3	3.2	3.2	3.4
20 to 24 years.....	996	843	990	6.7	7.1	6.9	6.5	5.4	6.3
25 years and over.....	4,268	4,174	4,401	3.0	2.8	2.9	2.9	2.9	3.0
25 to 54 years.....	3,249	3,281	3,355	3.1	3.0	3.1	2.9	3.1	3.1
25 to 34 years.....	1,450	1,421	1,441	3.9	3.9	3.9	3.8	3.8	3.9
35 to 44 years.....	1,045	1,064	1,052	2.9	2.6	2.6	2.5	2.9	2.9
45 to 54 years.....	755	796	862	2.3	2.3	2.6	2.4	2.4	2.6
55 years and over.....	1,038	894	1,056	2.7	2.3	2.5	2.6	2.3	2.8
Men, 16 years and over.....	3,163	3,075	3,294	3.6	3.6	3.6	3.6	3.5	3.7
16 to 19 years.....	329	297	333	10.6	11.9	12.4	10.4	9.1	10.4
16 to 17 years.....	105	101	91	9.1	15.0	11.4	9.5	8.6	8.0
18 to 19 years.....	225	210	239	11.4	10.1	12.9	10.6	10.1	11.5
20 years and over.....	2,834	2,778	2,961	3.4	3.2	3.3	3.4	3.3	3.5
20 to 24 years.....	533	477	570	7.1	7.8	7.9	6.9	6.0	7.1
25 years and over.....	2,242	2,261	2,332	2.9	2.9	2.9	3.0	2.9	3.0
25 to 54 years.....	1,693	1,783	1,743	3.0	3.1	3.1	3.0	3.1	3.1
25 to 34 years.....	772	806	744	3.9	4.3	3.9	4.0	4.0	3.7
35 to 44 years.....	542	561	534	2.8	2.5	2.7	2.8	2.9	2.7
45 to 54 years.....	379	416	465	2.2	2.2	2.5	2.1	2.4	2.7
55 years and over.....	549	478	589	2.7	2.4	2.5	2.8	2.3	2.9
Women, 16 years and over.....	2,816	2,582	2,803	3.7	3.3	3.5	3.4	3.3	3.6
16 to 19 years.....	327	289	317	10.5	8.7	9.8	9.3	9.2	10.2
16 to 17 years.....	146	128	144	11.3	7.1	6.8	8.7	10.2	10.7
18 to 19 years.....	172	164	168	9.4	9.8	11.2	9.9	8.7	9.5
20 years and over.....	2,489	2,293	2,486	3.4	3.1	3.2	3.1	3.1	3.3
20 to 24 years.....	463	366	420	6.4	6.3	5.9	6.1	4.7	5.4
25 years and over.....	2,026	1,913	2,068	3.0	2.7	3.0	2.7	2.8	3.1
25 to 54 years.....	1,557	1,498	1,612	3.2	2.9	3.0	2.8	3.0	3.2
25 to 34 years.....	678	615	698	3.9	3.5	3.9	3.4	3.5	4.0
35 to 44 years.....	503	503	517	3.0	2.7	2.4	2.3	3.0	3.1
45 to 54 years.....	376	379	397	2.5	2.4	2.8	2.8	2.5	2.6
55 years and over.....	478	425	460	2.7	2.2	2.7	2.4	2.4	2.6
<b>MARITAL STATUS</b>									
Married men, spouse present <sup>1</sup> .....	914	806	948	2.0	1.8	1.9	1.9	1.7	2.0
Married women, spouse present <sup>1</sup> .....	840	747	867	2.3	1.9	2.0	2.0	2.0	2.3
Women who maintain families <sup>2</sup> .....	525	489	468	5.0	3.8	5.0	4.6	4.8	4.6
<b>FULL- OR PART-TIME STATUS</b>									
Full-time workers <sup>3</sup> .....	4,759	4,655	4,953	3.5	3.4	3.5	3.4	3.3	3.6
Part-time workers <sup>4</sup> .....	1,155	991	1,095	4.3	3.8	4.0	3.9	3.6	4.0

<sup>1</sup> Beginning with data for January 2020, refers to persons in both opposite-sex and same-sex married couples. Prior to January 2020, referred to persons in opposite-sex married couples only.

<sup>2</sup> Data are not seasonally adjusted. Beginning with data for January 2020, refers to female householders residing with one or more family members, but not a spouse of either sex. Prior to January 2020, referred to female householders residing with one or more family members, but not an opposite-sex spouse.

<sup>3</sup> Full-time workers are unemployed persons who have expressed a desire to work full time (35 hours or more per week) or are on layoff from full-time jobs.

<sup>4</sup> Part-time workers are unemployed persons who have expressed a desire to work part time (less than 35 hours per week) or are on layoff from part-time jobs.

NOTE: Detail for the seasonally adjusted data shown in this table will not necessarily add to totals because of the independent seasonal adjustment of the various series. Updated population controls are introduced annually with the release of January data.

**HOUSEHOLD DATA**

**Table A-11. Unemployed persons by reason for unemployment**

[Numbers in thousands]

Reason	Not seasonally adjusted			Seasonally adjusted					
	May 2022	Apr. 2023	May 2023	May 2022	Jan. 2023	Feb. 2023	Mar. 2023	Apr. 2023	May 2023
<b>NUMBER OF UNEMPLOYED</b>									
Job losers and persons who completed temporary jobs.....	2,323	2,391	2,610	2,732	2,529	2,752	2,949	2,642	2,960
On temporary layoff.....	545	568	503	815	734	816	833	709	767
Not on temporary layoff.....	1,778	1,824	2,107	1,916	1,795	1,935	2,117	1,933	2,193
Permanent job losers.....	1,304	1,391	1,567	1,375	1,257	1,380	1,552	1,445	1,588
Persons who completed temporary jobs....	474	433	540	541	538	555	564	488	605
Job leavers.....	719	746	715	766	884	891	845	790	765
Reentrants.....	1,989	1,581	1,880	1,944	1,817	1,847	1,665	1,761	1,821
New entrants.....	516	428	495	530	531	515	492	531	508
<b>PERCENT DISTRIBUTION</b>									
Job losers and persons who completed temporary jobs.....	41.9	46.5	45.8	45.7	43.9	45.8	49.6	46.2	48.9
On temporary layoff.....	9.8	11.0	8.8	13.6	12.7	13.6	14.0	12.4	12.7
Not on temporary layoff.....	32.0	35.4	37.0	32.1	31.2	32.2	35.6	33.8	36.2
Job leavers.....	13.0	14.5	12.5	12.8	15.3	14.8	14.2	13.8	12.6
Reentrants.....	35.9	30.7	33.0	32.6	31.5	30.8	28.0	30.8	30.1
New entrants.....	9.3	8.3	8.7	8.9	9.2	8.6	8.3	9.3	8.4
<b>UNEMPLOYED AS A PERCENT OF THE CIVILIAN LABOR FORCE</b>									
Job losers and persons who completed temporary jobs.....	1.4	1.4	1.6	1.7	1.5	1.7	1.8	1.6	1.8
Job leavers.....	0.4	0.4	0.4	0.5	0.5	0.5	0.5	0.5	0.5
Reentrants.....	1.2	1.0	1.1	1.2	1.1	1.1	1.0	1.1	1.1
New entrants.....	0.3	0.3	0.3	0.3	0.3	0.3	0.3	0.3	0.3

NOTE: Detail for the seasonally adjusted data shown in this table will not necessarily add to total unemployed in table A-1 because of the independent seasonal adjustment of the various series. Updated population controls are introduced annually with the release of January data.

**HOUSEHOLD DATA**

**Table A-12. Unemployed persons by duration of unemployment**

[Numbers in thousands]

Duration	Not seasonally adjusted			Seasonally adjusted					
	May 2022	Apr. 2023	May 2023	May 2022	Jan. 2023	Feb. 2023	Mar. 2023	Apr. 2023	May 2023
<b>NUMBER OF UNEMPLOYED</b>									
Less than 5 weeks.....	1,994	1,484	2,044	2,052	1,946	2,289	2,272	1,866	2,083
5 to 14 weeks.....	1,449	1,607	1,536	1,771	1,785	1,845	1,733	1,915	1,865
15 weeks and over.....	2,105	2,055	2,120	2,035	2,001	1,862	1,838	1,835	2,046
15 to 26 weeks.....	826	958	992	687	890	805	734	679	858
27 weeks and over.....	1,279	1,098	1,127	1,349	1,111	1,057	1,104	1,156	1,188
Average (mean) duration, in weeks.....	23.2	22.4	21.9	22.5	20.4	19.3	19.5	20.9	21.2
Median duration, in weeks.....	9.4	10.5	9.4	8.7	9.1	8.3	8.1	8.4	8.6
<b>PERCENT DISTRIBUTION</b>									
Less than 5 weeks.....	35.9	28.8	35.9	35.0	33.9	38.2	38.9	33.2	34.8
5 to 14 weeks.....	26.1	31.2	27.0	30.2	31.1	30.8	29.7	34.1	31.1
15 weeks and over.....	37.9	39.9	37.2	34.7	34.9	31.1	31.5	32.7	34.1
15 to 26 weeks.....	14.9	18.6	17.4	11.7	15.5	13.4	12.6	12.1	14.3
27 weeks and over.....	23.1	21.3	19.8	23.0	19.4	17.6	18.9	20.6	19.8

NOTE: Detail for the seasonally adjusted data shown in this table will not necessarily add to total unemployed in table A-1 because of the independent seasonal adjustment of the various series. Updated population controls are introduced annually with the release of January data.

**HOUSEHOLD DATA**

**Table A-13. Employed and unemployed persons by occupation, not seasonally adjusted**

[Numbers in thousands]

Occupation	Employed		Unemployed		Unemployment rates	
	May 2022	May 2023	May 2022	May 2023	May 2022	May 2023
Total, 16 years and over <sup>1</sup> .....	158,609	161,002	5,548	5,700	3.4	3.4
Management, professional, and related occupations.....	67,652	70,388	1,098	1,281	1.6	1.8
Management, business, and financial operations occupations.....	28,870	30,830	422	616	1.4	2.0
Professional and related occupations.....	38,782	39,557	677	665	1.7	1.7
Service occupations.....	26,025	26,426	1,153	1,264	4.2	4.6
Sales and office occupations.....	30,434	30,205	1,267	1,102	4.0	3.5
Sales and related occupations.....	14,477	14,202	633	598	4.2	4.0
Office and administrative support occupations.....	15,957	16,002	635	504	3.8	3.1
Natural resources, construction, and maintenance occupations.....	14,290	14,363	535	516	3.6	3.5
Farming, fishing, and forestry occupations.....	1,002	984	54	51	5.1	4.9
Construction and extraction occupations.....	8,514	8,437	403	337	4.5	3.8
Installation, maintenance, and repair occupations.....	4,774	4,942	78	127	1.6	2.5
Production, transportation, and material moving occupations.....	20,209	19,621	968	1,025	4.6	5.0
Production occupations.....	8,281	8,024	334	341	3.9	4.1
Transportation and material moving occupations.....	11,928	11,597	634	684	5.0	5.6

<sup>1</sup> Persons with no previous work experience and persons whose last job was in the U.S. Armed Forces are included in the unemployed total.

NOTE: Updated population controls are introduced annually with the release of January data. Effective with January 2020 data, occupations reflect the introduction of the 2018 Census occupational classification system into the Current Population Survey, or household survey. This classification system is derived from the 2018 Standard Occupational Classification (SOC). No historical data have been revised. Data for 2020 are not strictly comparable with earlier years.



**HOUSEHOLD DATA**

**Table A-14. Unemployed persons by industry and class of worker, not seasonally adjusted**

Industry and class of worker	Number of unemployed persons (in thousands)		Unemployment rates	
	May 2022	May 2023	May 2022	May 2023
Total, 16 years and over <sup>1</sup> .....	5,548	5,700	3.4	3.4
Nonagricultural private wage and salary workers.....	4,353	4,483	3.3	3.4
Mining, quarrying, and oil and gas extraction.....	24	10	4.1	1.8
Construction.....	392	355	3.8	3.5
Manufacturing.....	422	409	2.8	2.7
Durable goods.....	256	245	2.7	2.5
Nondurable goods.....	166	164	2.9	3.0
Wholesale and retail trade.....	819	855	4.2	4.4
Transportation and utilities.....	348	282	4.1	3.3
Information.....	70	73	2.9	2.5
Financial activities.....	193	240	1.9	2.3
Professional and business services.....	583	750	3.1	3.9
Education and health services.....	620	595	2.5	2.3
Leisure and hospitality.....	681	717	5.1	5.2
Other services.....	200	195	3.1	2.9
Agriculture and related private wage and salary workers.....	49	75	3.1	4.6
Government workers.....	356	386	1.7	1.8
Self-employed workers, unincorporated, and unpaid family workers.....	273	261	2.6	2.6

<sup>1</sup> Persons with no previous work experience and persons whose last job was in the U.S. Armed Forces are included in the unemployed total.

NOTE: Updated population controls are introduced annually with the release of January data. Effective with January 2020 data, industries reflect the introduction of the 2017 Census industry classification system into the Current Population Survey. This industry classification system is derived from the 2017 North American Industry Classification System (NAICS). No historical data have been revised.

**HOUSEHOLD DATA**

**Table A-15. Alternative measures of labor underutilization**

[Percent]

Measure	Not seasonally adjusted			Seasonally adjusted					
	May 2022	Apr. 2023	May 2023	May 2022	Jan. 2023	Feb. 2023	Mar. 2023	Apr. 2023	May 2023
U-1 Persons unemployed 15 weeks or longer, as a percent of the civilian labor force.....	1.3	1.2	1.3	1.2	1.2	1.1	1.1	1.1	1.2
U-2 Job losers and persons who completed temporary jobs, as a percent of the civilian labor force.....	1.4	1.4	1.6	1.7	1.5	1.7	1.8	1.6	1.8
U-3 Total unemployed, as a percent of the civilian labor force (official unemployment rate).....	3.4	3.1	3.4	3.6	3.4	3.6	3.5	3.4	3.7
U-4 Total unemployed plus discouraged workers, as a percent of the civilian labor force plus discouraged workers.....	3.6	3.3	3.6	3.9	3.6	3.8	3.7	3.6	3.9
U-5 Total unemployed, plus discouraged workers, plus all other persons marginally attached to the labor force, as a percent of the civilian labor force plus all persons marginally attached to the labor force.....	4.2	3.9	4.3	4.5	4.2	4.4	4.2	4.2	4.5
U-6 Total unemployed, plus all persons marginally attached to the labor force, plus total employed part time for economic reasons, as a percent of the civilian labor force plus all persons marginally attached to the labor force.....	6.7	6.1	6.4	7.1	6.6	6.8	6.7	6.6	6.7

NOTE: Persons marginally attached to the labor force are those who currently are neither working nor looking for work but indicate that they want and are available for a job and have looked for work sometime in the past 12 months. Discouraged workers, a subset of the marginally attached, have given a job-market related reason for not currently looking for work. Persons employed part time for economic reasons are those who want and are available for full-time work but have had to settle for a part-time schedule. Updated population controls are introduced annually with the release of January data.

**HOUSEHOLD DATA**

**Table A-16. Persons not in the labor force and multiple jobholders by sex, not seasonally adjusted**

[Numbers in thousands]

Category	Total		Men		Women	
	May 2022	May 2023	May 2022	May 2023	May 2022	May 2023
<b>NOT IN THE LABOR FORCE</b>						
Total not in the labor force.....	99,521	99,916	41,158	41,618	58,364	58,298
Persons who currently want a job.....	6,180	6,004	2,996	2,902	3,184	3,101
Marginally attached to the labor force <sup>1</sup> .....	1,417	1,477	758	766	659	711
Discouraged workers <sup>2</sup> .....	379	396	207	232	172	165
Other persons marginally attached to the labor force <sup>3</sup> ..	1,038	1,080	551	534	487	547
<b>MULTIPLE JOBHOLDERS</b>						
Total multiple jobholders <sup>4</sup> .....	7,313	7,718	3,545	3,740	3,768	3,978
Percent of total employed.....	4.6	4.8	4.2	4.4	5.1	5.3
Primary job full time, secondary job part time.....	4,295	4,480	2,184	2,326	2,112	2,154
Primary and secondary jobs both part time.....	1,714	1,898	607	717	1,107	1,181
Primary and secondary jobs both full time.....	372	375	261	204	110	171
Hours vary on primary or secondary job.....	868	932	462	482	406	451

<sup>1</sup> Data refer to persons who want a job, have searched for work during the prior 12 months, and were available to take a job during the reference week, but had not looked for work in the past 4 weeks.

<sup>2</sup> Includes those who did not actively look for work in the prior 4 weeks for reasons such as thinks no work available, could not find work, lacks schooling or training, employer thinks too young or old, and other types of discrimination.

<sup>3</sup> Includes those who did not actively look for work in the prior 4 weeks for such reasons as school or family responsibilities, ill health, and transportation problems, as well as a number for whom reason for nonparticipation was not determined.

<sup>4</sup> Includes a small number of persons who work part time on their primary job and full time on their secondary job(s), not shown separately.

NOTE: Updated population controls are introduced annually with the release of January data.

**ESTABLISHMENT DATA**

**Table B-1. Employees on nonfarm payrolls by industry sector and selected industry detail**

[In thousands]

Industry	Not seasonally adjusted				Seasonally adjusted				Change from: Apr.2023 - May2023 <sup>P</sup>
	May 2022	Mar. 2023	Apr. 2023 <sup>P</sup>	May 2023 <sup>P</sup>	May 2022	Mar. 2023	Apr. 2023 <sup>P</sup>	May 2023 <sup>P</sup>	
Total nonfarm.....	152,291	154,440	155,386	156,306	152,042	155,472	155,766	156,105	339
Total private.....	129,929	131,616	132,483	133,382	129,920	132,907	133,160	133,443	283
Goods-producing.....	21,148	21,218	21,400	21,566	21,125	21,501	21,529	21,555	26
Mining and logging.....	597	628	634	640	600	635	640	643	3
Logging.....	41.7	45.7	43.8	44.4	43.9	46.3	46.6	46.6	0.0
Mining, quarrying, and oil and gas extraction..	555.3	582.3	590.2	595.8	556.1	588.8	593.7	596.5	2.8
Oil and gas extraction.....	119.2	116.9	117.2	117.8	120.4	117.7	118.4	119.0	0.6
Mining (except oil and gas).....	184.0	183.2	186.1	188.7	181.8	187.2	187.3	186.8	-0.5
Coal mining.....	40.5	41.3	41.4	41.4	40.4	41.2	41.3	41.3	0.0
Metal ore mining.....	42.9	43.6	43.9	44.1	42.9	43.9	44.0	44.1	0.1
Nonmetallic mineral mining and quarrying.....	100.6	98.3	100.8	103.2	98.5	102.2	102.0	101.5	-0.5
Support activities for mining.....	252.1	282.2	286.9	289.3	253.9	283.9	288.0	290.7	2.7
Construction.....	7,783	7,657	7,824	7,973	7,736	7,890	7,903	7,928	25
Construction of buildings.....	1,751.4	1,754.9	1,765.4	1,792.0	1,752.6	1,790.4	1,787.7	1,794.3	6.6
Residential building construction.....	926.6	911.7	917.1	932.8	925.1	931.6	930.2	932.6	2.4
Nonresidential building construction.....	824.8	843.2	848.3	859.2	827.5	858.8	857.5	861.7	4.2
Heavy and civil engineering construction.....	1,099.5	1,042.2	1,094.4	1,134.1	1,073.2	1,103.6	1,095.5	1,106.2	10.7
Specialty trade contractors.....	4,932.5	4,860.1	4,964.2	5,046.8	4,909.7	4,996.1	5,019.9	5,027.2	7.3
Residential specialty trade contractors.....	2,315.8	2,255.3	2,309.1	2,344.3	2,296.7	2,314.8	2,328.2	2,328.3	0.1
Nonresidential specialty trade contractors...	2,616.7	2,604.8	2,655.1	2,702.5	2,613.0	2,681.3	2,691.7	2,698.9	7.2
Manufacturing.....	12,768	12,933	12,942	12,953	12,789	12,976	12,986	12,984	-2
Durable goods.....	7,937	8,077	8,088	8,095	7,943	8,092	8,103	8,106	3
Wood product manufacturing.....	431.5	424.7	422.8	425.0	430.9	426.0	424.2	425.0	0.8
Nonmetallic mineral product manufacturing.....	421.9	425.5	427.3	430.8	417.4	431.2	429.3	427.5	-1.8
Primary metal manufacturing.....	359.7	368.2	367.1	368.5	361.1	367.7	367.8	369.8	2.0
Fabricated metal product manufacturing...	1,428.1	1,444.7	1,449.8	1,447.4	1,428.8	1,446.0	1,451.1	1,448.8	-2.3
Machinery manufacturing.....	1,100.9	1,124.9	1,124.0	1,121.1	1,100.7	1,125.0	1,124.2	1,121.8	-2.4
Computer and electronic product manufacturing.....	1,082.4	1,095.6	1,098.3	1,098.9	1,085.1	1,099.0	1,102.1	1,101.8	-0.3
Computer and peripheral equipment manufacturing.....	160.3	167.2	167.7	167.3	161.0	168.2	168.5	168.4	-0.1
Communications equipment manufacturing.....	85.4	84.2	84.3	84.9	85.6	84.1	84.4	84.9	0.5
Semiconductor and other electronic component manufacturing.....	382.8	388.4	388.4	386.9	384.3	389.3	390.2	388.8	-1.4
Navigational, measuring, electromedical, and control instruments manufacturing.....	423.0	423.2	425.2	426.7	422.8	424.3	425.7	426.2	0.5
Manufacturing and reproducing magnetic and optical media and audio and video equipment manufacturing.....	30.9	32.6	32.7	33.1	31.4	33.1	33.3	33.5	0.2
Electrical equipment, appliance, and component manufacturing.....	402.7	404.5	402.8	405.3	403.6	405.3	403.9	406.0	2.1
Transportation equipment manufacturing <sup>1</sup> ...	1,699.1	1,790.0	1,799.5	1,806.5	1,706.4	1,790.4	1,801.0	1,811.5	10.5
Motor vehicles and parts <sup>2</sup> .....	995.9	1,051.2	1,063.4	1,065.5	1,002.2	1,052.1	1,061.1	1,067.9	6.8
Furniture and related product manufacturing.....	383.7	368.3	366.2	362.2	382.7	368.1	367.2	363.2	-4.0
Miscellaneous manufacturing.....	626.7	630.9	630.2	629.3	626.5	633.1	632.0	630.2	-1.8
Nondurable goods.....	4,831	4,856	4,854	4,858	4,846	4,884	4,883	4,878	-5
Food manufacturing.....	1,677.6	1,716.1	1,712.2	1,710.5	1,695.9	1,729.0	1,729.8	1,729.7	-0.1
Textile mills.....	99.2	95.4	95.6	93.5	99.0	95.4	95.5	93.5	-2.0
Textile product mills.....	105.4	102.5	101.0	100.8	105.3	102.2	101.1	100.7	-0.4
Apparel manufacturing.....	93.4	93.4	94.0	92.8	93.4	93.6	93.5	92.8	-0.7
Paper manufacturing.....	363.1	356.4	352.9	351.7	362.9	356.0	353.7	352.1	-1.6
Printing and related support activities.....	380.9	380.8	379.9	378.7	381.4	382.0	381.3	379.3	-2.0
Petroleum and coal products manufacturing.....	107.6	102.6	105.5	107.3	106.4	105.5	106.3	105.9	-0.4
Chemical manufacturing.....	899.1	913.7	914.0	916.0	900.8	914.7	916.5	918.2	1.7
Plastics and rubber products manufacturing.....	756.0	747.1	747.2	748.1	753.6	748.6	747.9	747.2	-0.7

See footnotes at end of table.

**ESTABLISHMENT DATA**

**Table B-1. Employees on nonfarm payrolls by industry sector and selected industry detail**

— Continued

[In thousands]

Industry	Not seasonally adjusted				Seasonally adjusted				Change from: Apr.2023 - May2023P
	May 2022	Mar. 2023	Apr. 2023P	May 2023P	May 2022	Mar. 2023	Apr. 2023P	May 2023P	
Nondurable goods - Continued									
Beverage, tobacco, and leather and allied product manufacturing.....	348.2	348.1	351.7	358.7	347.2	357.2	357.8	358.1	0.3
Private service-providing.....	108,781	110,398	111,083	111,816	108,795	111,406	111,631	111,888	257
Trade, transportation, and utilities.....	28,423	28,588	28,583	28,716	28,634	28,867	28,884	28,921	37
Wholesale trade.....	5,965.3	6,022.3	6,035.3	6,054.7	5,961.1	6,047.9	6,050.3	6,051.4	1.1
Merchant wholesalers, durable goods.....	3,287.2	3,333.5	3,335.5	3,347.8	3,285.5	3,342.3	3,342.6	3,347.0	4.4
Merchant wholesalers, nondurable goods....	2,159.7	2,166.2	2,174.6	2,186.3	2,157.1	2,180.6	2,180.9	2,183.3	2.4
Wholesale trade agents and brokers.....	518.4	522.6	525.2	520.6	518.5	525.0	526.8	521.1	-5.7
Retail trade.....	15,344.5	15,348.2	15,375.5	15,450.9	15,453.2	15,529.2	15,539.2	15,550.8	11.6
Motor vehicle and parts dealers.....	2,010.9	2,014.8	2,020.4	2,030.9	2,005.0	2,021.3	2,019.0	2,024.9	5.9
Automobile dealers.....	1,255.0	1,250.4	1,251.1	1,253.9	1,253.5	1,251.7	1,250.9	1,253.1	2.2
Other motor vehicle dealers.....	178.9	173.5	176.8	182.4	173.9	177.4	176.3	177.5	1.2
Automotive parts, accessories, and tire retailers.....	577.0	590.9	592.5	594.6	577.6	592.3	591.8	594.4	2.6
Building material and garden equipment and supplies dealers.....	1,455.4	1,383.1	1,407.7	1,431.7	1,393.7	1,386.7	1,383.3	1,378.5	-4.8
Food and beverage retailers.....	3,160.1	3,219.1	3,215.4	3,227.5	3,177.4	3,240.8	3,241.4	3,246.5	5.1
Furniture, home furnishings, electronics, and appliance retailers.....	904.4	866.0	855.6	852.9	912.9	870.9	866.3	862.4	-3.9
Furniture and home furnishings retailers...	459.2	443.8	435.7	436.2	463.6	444.6	441.4	440.5	-0.9
Electronics and appliance retailers.....	445.2	422.2	419.9	416.7	452.9	427.0	426.1	424.1	-2.0
General merchandise retailers.....	3,072.2	3,099.8	3,099.2	3,096.3	3,166.0	3,145.1	3,156.4	3,166.7	10.3
Department stores.....	921.7	924.6	920.4	915.6	970.2	958.3	958.8	958.1	-0.7
Warehouse clubs, supercenters, and other general merchandise retailers....	2,150.5	2,175.2	2,178.8	2,180.7	2,195.8	2,186.8	2,197.5	2,208.6	11.1
Health and personal care retailers.....	1,082.8	1,099.9	1,094.5	1,092.9	1,093.0	1,104.2	1,105.0	1,104.5	-0.5
Gasoline stations and fuel dealers.....	1,032.4	1,047.3	1,061.0	1,065.6	1,033.4	1,060.0	1,069.0	1,066.9	-2.1
Clothing, clothing accessories, shoe, and jewelry retailers.....	1,109.7	1,121.5	1,114.5	1,126.4	1,141.4	1,161.0	1,157.8	1,159.1	1.3
Sporting goods, hobby, musical instrument, book, and miscellaneous retailers.....	1,516.6	1,496.7	1,507.2	1,526.7	1,530.4	1,539.2	1,541.0	1,541.3	0.3
Transportation and warehousing.....	6,561.4	6,664.5	6,617.1	6,655.8	6,667.2	6,735.1	6,738.8	6,763.0	24.2
Air transportation.....	498.2	533.3	535.2	541.2	496.6	533.8	536.8	539.9	3.1
Rail transportation.....	146.4	149.8	150.4	150.4	146.7	149.9	150.4	150.3	-0.1
Water transportation.....	63.5	64.0	65.3	69.1	63.4	66.7	67.3	68.7	1.4
Truck transportation.....	1,579.7	1,581.6	1,590.1	1,603.2	1,583.8	1,607.6	1,608.6	1,609.2	0.6
Transit and ground passenger transportation.....	424.4	449.7	435.8	450.4	411.6	436.8	424.8	436.6	11.8
Pipeline transportation.....	50.5	47.9	48.0	48.2	50.4	48.0	48.1	48.0	-0.1
Scenic and sightseeing transportation.....	33.8	29.4	32.7	33.8	33.4	34.2	35.3	34.3	-1.0
Support activities for transportation.....	783.0	811.8	806.2	808.3	789.6	813.8	813.6	815.8	2.2
Couriers and messengers.....	1,055.4	1,081.7	1,049.5	1,062.6	1,136.2	1,126.1	1,133.0	1,141.2	8.2
Warehousing and storage.....	1,926.5	1,915.3	1,903.9	1,888.6	1,955.5	1,918.2	1,920.9	1,919.0	-1.9
Utilities.....	551.5	552.9	554.8	554.9	552.5	554.3	555.8	555.9	0.1
Information.....	3,056	3,072	3,074	3,066	3,067	3,092	3,093	3,084	-9
Motion picture and sound recording industries.....	463.2	446.7	455.0	460.8	463.0	460.5	461.9	461.6	-0.3
Publishing industries.....	933.9	932.9	932.6	926.5	939.7	937.7	938.8	936.3	-2.5
Broadcasting and content providers.....	355.1	356.7	354.8	354.5	355.7	356.6	355.9	355.5	-0.4
Telecommunications.....	661.4	652.7	648.8	645.5	664.7	651.9	651.7	649.2	-2.5
Computing infrastructure providers, data processing, web hosting, and related services.....	460.0	482.7	489.2	488.8	459.8	483.8	489.7	489.0	-0.7
Web search portals, libraries, archives, and other information services.....	182.1	200.6	193.3	189.9	183.7	201.0	194.8	192.8	-2.0
Financial activities.....	9,015	9,039	9,075	9,099	9,040	9,095	9,120	9,130	10
Finance and insurance.....	6,648.2	6,669.9	6,679.3	6,685.3	6,669.8	6,685.6	6,702.7	6,709.8	7.1
Monetary authorities-central bank.....	21.0	21.8	21.9	21.9	21.2	21.9	22.0	22.0	0.0
Credit intermediation and related activities.....	2,697.6	2,666.9	2,665.2	2,662.0	2,701.4	2,669.9	2,671.0	2,668.2	-2.8

See footnotes at end of table.

**ESTABLISHMENT DATA**

**Table B-1. Employees on nonfarm payrolls by industry sector and selected industry detail**

— Continued

[In thousands]

Industry	Not seasonally adjusted				Seasonally adjusted				Change from: Apr.2023 - May2023 <sup>P</sup>
	May 2022	Mar. 2023	Apr. 2023 <sup>P</sup>	May 2023 <sup>P</sup>	May 2022	Mar. 2023	Apr. 2023 <sup>P</sup>	May 2023 <sup>P</sup>	
Credit intermediation and related - Continued									
Depository credit intermediation <sup>1</sup> .....	1,751.8	1,786.0	1,784.3	1,777.5	1,753.0	1,785.1	1,786.8	1,780.9	-5.9
Commercial banking.....	1,359.4	1,377.8	1,376.5	1,368.3	1,361.0	1,375.9	1,377.2	1,371.4	-5.8
Nondepository credit intermediation.....	611.9	568.0	567.2	570.2	614.6	571.4	570.9	572.8	1.9
Activities related to credit intermediation...	333.9	312.9	313.7	314.3	333.9	313.4	313.3	314.5	1.2
Securities, commodity contracts, funds, trusts, and other financial vehicles, investments, and related activities.....	1,034.7	1,067.6	1,071.0	1,072.8	1,041.7	1,075.7	1,077.7	1,080.4	2.7
Insurance carriers and related activities.....	2,894.9	2,913.6	2,921.2	2,928.6	2,905.5	2,918.1	2,932.0	2,939.2	7.2
Real estate and rental and leasing.....	2,366.6	2,369.0	2,395.4	2,413.6	2,370.5	2,409.4	2,417.6	2,420.4	2.8
Real estate.....	1,808.4	1,822.0	1,841.9	1,845.8	1,814.3	1,847.0	1,854.2	1,855.4	1.2
Rental and leasing services.....	535.7	524.9	531.2	545.3	533.6	539.9	540.9	542.4	1.5
Lessors of nonfinancial intangible assets (except copyrighted works).....	22.5	22.1	22.3	22.5	22.6	22.5	22.5	22.6	0.1
Professional and business services.....	22,455	22,665	22,889	22,993	22,493	22,924	22,989	23,053	64
Professional, scientific, and technical services.....	10,400.9	10,778.3	10,854.6	10,808.3	10,465.5	10,784.4	10,829.6	10,872.3	42.7
Legal services.....	1,173.3	1,169.2	1,171.0	1,173.3	1,178.8	1,177.4	1,179.7	1,180.4	0.7
Accounting, tax preparation, bookkeeping, and payroll services.....	1,078.2	1,220.4	1,219.0	1,130.5	1,114.0	1,141.7	1,148.8	1,159.6	10.8
Architectural, engineering, and related services.....	1,587.8	1,642.5	1,654.8	1,670.5	1,594.8	1,666.2	1,670.8	1,677.8	7.0
Specialized design services.....	152.5	157.4	158.4	159.5	152.3	159.6	159.0	159.1	0.1
Computer systems design and related services.....	2,452.5	2,470.3	2,502.3	2,503.4	2,450.5	2,488.1	2,501.1	2,503.6	2.5
Management, scientific, and technical consulting services.....	1,765.1	1,839.0	1,853.8	1,858.2	1,772.6	1,854.3	1,861.1	1,869.3	8.2
Scientific research and development services.....	883.4	921.5	925.3	929.7	888.3	928.4	931.4	934.5	3.1
Advertising, public relations, and related services.....	481.5	490.1	492.5	495.6	482.4	492.3	494.0	496.6	2.6
Other professional, scientific, and technical services.....	826.6	867.9	877.5	887.6	831.8	876.4	883.8	891.3	7.5
Management of companies and enterprises.....	2,470.6	2,507.5	2,512.2	2,514.7	2,477.3	2,517.3	2,522.5	2,522.4	-0.1
Administrative and support and waste management and remediation services.....	9,583.2	9,379.1	9,522.4	9,670.2	9,550.1	9,622.1	9,636.4	9,657.9	21.5
Administrative and support services.....	9,112.5	8,894.6	9,032.6	9,176.0	9,075.5	9,132.0	9,142.2	9,162.1	19.9
Office administrative services.....	586.9	611.3	618.1	623.9	585.6	618.4	620.9	623.7	2.8
Facilities support services.....	152.0	161.4	160.5	160.6	153.9	161.0	160.6	162.7	2.1
Employment services <sup>1</sup> .....	3,870.5	3,741.0	3,724.0	3,784.8	3,898.0	3,827.6	3,825.7	3,835.0	9.3
Temporary help services.....	3,109.6	2,968.8	2,959.1	3,015.7	3,125.2	3,041.6	3,034.7	3,042.4	7.7
Business support services.....	795.8	759.5	758.3	757.1	801.2	764.1	762.8	761.6	-1.2
Travel arrangement and reservation services.....	171.5	176.7	179.7	181.3	170.0	178.8	180.1	180.1	0.0
Investigation and security services.....	946.8	969.1	975.9	977.8	946.7	972.7	976.2	978.4	2.2
Services to buildings and dwellings.....	2,256.0	2,138.1	2,277.4	2,351.5	2,186.9	2,267.3	2,275.0	2,280.2	5.2
Other support services.....	333.0	337.5	338.7	339.0	333.1	342.0	341.0	340.3	-0.7
Waste management and remediation services.....	470.7	484.5	489.8	494.2	474.6	490.1	494.2	495.8	1.6
Private education and health services.....	24,196	25,179	25,269	25,274	24,181	25,072	25,157	25,254	97
Private educational services.....	3,791.4	4,051.7	4,067.7	3,977.2	3,772.2	3,914.4	3,930.3	3,952.6	22.3
Health care and social assistance.....	20,405.0	21,127.3	21,201.2	21,297.2	20,408.7	21,157.9	21,227.0	21,301.6	74.6
Health care <sup>3</sup> .....	16,158.3	16,682.2	16,728.1	16,782.3	16,187.9	16,718.0	16,759.8	16,812.2	52.4
Ambulatory health care services.....	8,062.1	8,315.3	8,347.9	8,373.7	8,064.7	8,329.3	8,353.3	8,377.2	23.9
Offices of physicians.....	2,790.8	2,859.9	2,878.0	2,886.3	2,792.7	2,866.5	2,879.2	2,887.4	8.2
Offices of dentists.....	1,003.7	1,027.4	1,032.6	1,040.0	1,004.0	1,030.8	1,035.5	1,039.7	4.2
Offices of other health practitioners.....	1,076.1	1,118.2	1,123.5	1,125.7	1,076.5	1,122.3	1,124.6	1,127.8	3.2
Outpatient care centers.....	1,024.9	1,062.0	1,060.5	1,064.6	1,026.3	1,061.5	1,062.5	1,066.3	3.8
Medical and diagnostic laboratories.....	321.8	321.8	325.3	322.9	321.8	322.5	323.6	323.2	-0.4
Home health care services.....	1,522.5	1,589.8	1,592.9	1,601.2	1,521.2	1,590.9	1,593.0	1,598.8	5.8
Other ambulatory health care services.....	322.3	336.2	335.1	333.0	322.2	334.8	335.0	333.9	-1.1
Hospitals.....	5,114.8	5,263.8	5,266.3	5,279.8	5,132.3	5,270.6	5,279.8	5,299.4	19.6

See footnotes at end of table.

**ESTABLISHMENT DATA**

**Table B-1. Employees on nonfarm payrolls by industry sector and selected industry detail**

— Continued

[In thousands]

Industry	Not seasonally adjusted				Seasonally adjusted				Change from: Apr.2023 - May2023 <sup>p</sup>
	May 2022	Mar. 2023	Apr. 2023 <sup>p</sup>	May 2023 <sup>p</sup>	May 2022	Mar. 2023	Apr. 2023 <sup>p</sup>	May 2023 <sup>p</sup>	
Health care - Continued									
Nursing and residential care facilities.....	2,981.4	3,103.1	3,113.9	3,128.8	2,990.9	3,118.1	3,126.7	3,135.6	8.9
Skilled nursing care facilities.....	1,339.5	1,387.4	1,392.5	1,397.0	1,347.1	1,396.5	1,399.1	1,402.0	2.9
Residential intellectual and developmental disability, mental health, and substance abuse facilities.....	602.2	622.7	625.1	631.0	602.4	624.5	627.3	631.0	3.7
Continuing care retirement communities and assisted living facilities for the elderly.....	890.3	937.5	942.3	945.7	891.0	941.5	944.9	946.6	1.7
Other residential care facilities.....	149.4	155.5	154.0	155.1	150.5	155.7	155.4	156.0	0.6
Social assistance.....	4,246.7	4,445.1	4,473.1	4,514.9	4,220.8	4,439.9	4,467.2	4,489.4	22.2
Individual and family services.....	2,808.0	2,952.5	2,979.0	3,004.5	2,800.3	2,954.0	2,978.2	2,995.4	17.2
Community food and housing, and emergency and other relief services....	200.7	213.9	213.8	215.0	201.6	212.5	213.4	215.4	2.0
Vocational rehabilitation services.....	269.4	277.9	278.0	278.7	269.7	279.6	279.4	278.8	-0.6
Child care services.....	968.6	1,000.8	1,002.3	1,016.7	949.2	993.9	996.2	999.8	3.6
Leisure and hospitality.....	15,938	16,060	16,366	16,800	15,699	16,518	16,548	16,596	48
Arts, entertainment, and recreation.....	2,347.0	2,255.9	2,372.6	2,515.9	2,277.8	2,428.1	2,437.6	2,451.3	13.7
Performing arts, spectator sports, and related industries.....	534.9	491.2	543.4	575.2	503.6	524.5	529.5	540.1	10.6
Museums, historical sites, and similar institutions.....	158.2	160.9	166.2	173.8	156.9	170.3	171.0	172.1	1.1
Amusement, gambling, and recreation industries.....	1,653.9	1,603.8	1,663.0	1,766.9	1,617.3	1,733.3	1,737.1	1,739.1	2.0
Accommodation and food services.....	13,590.6	13,803.7	13,993.1	14,283.7	13,420.7	14,090.0	14,110.6	14,145.0	34.4
Accommodation.....	1,774.9	1,792.8	1,811.6	1,863.5	1,758.1	1,858.3	1,856.5	1,857.8	1.3
Food services and drinking places.....	11,815.7	12,010.9	12,181.5	12,420.2	11,662.6	12,231.7	12,254.1	12,287.2	33.1
Other services.....	5,698	5,795	5,827	5,868	5,681	5,838	5,840	5,850	10
Repair and maintenance.....	1,392.9	1,425.8	1,436.4	1,447.8	1,388.6	1,433.0	1,437.5	1,442.4	4.9
Personal and laundry services.....	1,476.6	1,517.4	1,532.2	1,544.2	1,460.0	1,530.4	1,530.0	1,530.6	0.6
Religious, grantmaking, civic, professional, and similar organizations.....	2,828.7	2,851.5	2,858.6	2,876.0	2,831.9	2,874.9	2,872.5	2,876.7	4.2
Government.....	22,362	22,824	22,903	22,924	22,122	22,565	22,606	22,662	56
Federal.....	2,865	2,890	2,902	2,921	2,868	2,906	2,911	2,918	7
Federal, except U.S. Postal Service.....	2,266.4	2,285.0	2,291.4	2,316.2	2,264.8	2,301.2	2,304.8	2,310.1	5.3
U.S. Postal Service.....	598.4	604.5	610.7	604.8	603.1	604.4	606.3	607.6	1.3
State government.....	5,091	5,313	5,348	5,240	5,092	5,195	5,207	5,226	19
State government education.....	2,443.8	2,638.9	2,662.6	2,541.2	2,444.3	2,512.0	2,520.1	2,529.8	9.7
State government, excluding education.....	2,646.7	2,674.2	2,685.3	2,699.1	2,647.4	2,682.7	2,687.0	2,696.6	9.6
Local government.....	14,406	14,621	14,653	14,763	14,162	14,464	14,488	14,518	30
Local government education.....	8,029.0	8,178.7	8,168.1	8,193.1	7,777.8	7,919.4	7,924.3	7,938.9	14.6
Local government, excluding education.....	6,376.9	6,442.0	6,485.1	6,570.3	6,384.0	6,545.0	6,563.3	6,578.8	15.5

<sup>1</sup> Includes other industries, not shown separately.

<sup>2</sup> Includes motor vehicle manufacturing, motor vehicle body and trailer manufacturing, and motor vehicle parts manufacturing.

<sup>3</sup> Includes ambulatory health care services, hospitals, and nursing and residential care facilities.

p Preliminary

NOTE: Data have been revised to reflect March 2022 benchmark levels and updated seasonal adjustment factors.

**ESTABLISHMENT DATA**

**Table B-2. Average weekly hours and overtime of all employees on private nonfarm payrolls by industry sector, seasonally adjusted**

Industry	May 2022	Mar. 2023	Apr. 2023 <sup>p</sup>	May 2023 <sup>p</sup>
<b>AVERAGE WEEKLY HOURS</b>				
Total private.....	34.6	34.4	34.4	34.3
Goods-producing.....	40.0	39.9	39.9	39.9
Mining and logging.....	46.1	46.1	45.9	47.5
Construction.....	38.9	38.9	38.9	38.8
Manufacturing.....	40.4	40.3	40.1	40.1
Durable goods.....	40.7	40.7	40.5	40.6
Nondurable goods.....	39.8	39.6	39.5	39.3
Private service-providing.....	33.5	33.3	33.3	33.3
Trade, transportation, and utilities.....	34.1	34.0	33.9	33.9
Wholesale trade.....	39.0	38.8	38.8	38.9
Retail trade.....	30.1	30.1	30.0	30.0
Transportation and warehousing.....	38.2	38.1	37.9	37.7
Utilities.....	42.9	42.4	42.3	42.0
Information.....	36.7	36.2	36.3	36.0
Financial activities.....	37.5	37.4	37.5	37.5
Professional and business services.....	36.5	36.4	36.4	36.3
Private education and health services.....	33.5	33.4	33.3	33.3
Leisure and hospitality.....	25.8	25.4	25.4	25.4
Other services.....	32.3	32.3	32.3	32.3
<b>AVERAGE OVERTIME HOURS</b>				
Manufacturing.....	3.3	3.0	2.9	3.0
Durable goods.....	3.3	3.1	3.1	3.1
Nondurable goods.....	3.2	2.8	2.7	2.8

p Preliminary

NOTE: Data have been revised to reflect March 2022 benchmark levels and updated seasonal adjustment factors.



**ESTABLISHMENT DATA**

**Table B-3. Average hourly and weekly earnings of all employees on private nonfarm payrolls by industry sector, seasonally adjusted**

Industry	Average hourly earnings				Average weekly earnings			
	May 2022	Mar. 2023	Apr. 2023 <sup>p</sup>	May 2023 <sup>p</sup>	May 2022	Mar. 2023	Apr. 2023 <sup>p</sup>	May 2023 <sup>p</sup>
Total private.....	\$32.06	\$33.20	\$33.33	\$33.44	\$1,109.28	\$1,142.08	\$1,146.55	\$1,146.99
Goods-producing.....	32.32	33.53	33.70	33.81	1,292.80	1,337.85	1,344.63	1,349.02
Mining and logging.....	35.58	37.28	37.69	37.82	1,640.24	1,718.61	1,729.97	1,796.45
Construction.....	34.53	35.99	36.14	36.29	1,343.22	1,400.01	1,405.85	1,408.05
Manufacturing.....	30.86	31.88	32.03	32.11	1,246.74	1,284.76	1,284.40	1,287.61
Durable goods.....	32.48	33.42	33.58	33.69	1,321.94	1,360.19	1,359.99	1,367.81
Nondurable goods.....	28.14	29.25	29.39	29.39	1,119.97	1,158.30	1,160.91	1,155.03
Private service-providing.....	32.00	33.13	33.25	33.36	1,072.00	1,103.23	1,107.23	1,110.89
Trade, transportation, and utilities.....	27.60	28.66	28.83	28.88	941.16	974.44	977.34	979.03
Wholesale trade.....	34.75	36.41	36.58	36.61	1,355.25	1,412.71	1,419.30	1,424.13
Retail trade.....	22.82	23.76	23.85	23.89	686.88	715.18	715.50	716.70
Transportation and warehousing.....	27.97	28.61	28.88	28.97	1,068.45	1,090.04	1,094.55	1,092.17
Utilities.....	47.32	49.29	49.52	49.76	2,030.03	2,089.90	2,094.70	2,089.92
Information.....	46.03	48.06	47.70	48.48	1,689.30	1,739.77	1,731.51	1,745.28
Financial activities.....	41.18	42.71	42.56	42.78	1,544.25	1,597.35	1,596.00	1,604.25
Professional and business services.....	38.57	39.95	40.15	40.25	1,407.81	1,454.18	1,461.46	1,461.08
Private education and health services.....	31.67	32.65	32.77	32.87	1,060.95	1,090.51	1,091.24	1,094.57
Leisure and hospitality.....	19.98	20.93	21.00	21.07	515.48	531.62	533.40	535.18
Other services.....	28.39	29.31	29.55	29.66	917.00	946.71	954.47	958.02

p Preliminary

NOTE: Data have been revised to reflect March 2022 benchmark levels and updated seasonal adjustment factors.

**ESTABLISHMENT DATA**

**Table B-4. Indexes of aggregate weekly hours and payrolls for all employees on private nonfarm payrolls by industry sector, seasonally adjusted**

[2007=100]

Industry	Index of aggregate weekly hours <sup>1</sup>					Index of aggregate weekly payrolls <sup>2</sup>				
	May 2022	Mar. 2023	Apr. 2023 <sup>p</sup>	May 2023 <sup>p</sup>	Percent change from: Apr. 2023 - May 2023 <sup>p</sup>	May 2022	Mar. 2023	Apr. 2023 <sup>p</sup>	May 2023 <sup>p</sup>	Percent change from: Apr. 2023 - May 2023 <sup>p</sup>
Total private.....	112.8	114.8	115.0	114.9	-0.1	173.0	182.2	183.2	183.7	0.3
Goods-producing.....	96.3	97.7	97.9	98.0	0.1	140.6	148.1	149.1	149.7	0.4
Mining and logging.....	86.9	92.0	92.3	96.0	4.0	124.2	137.7	139.7	145.7	4.3
Construction.....	103.7	105.8	106.0	106.0	0.0	155.6	165.4	166.4	167.2	0.5
Manufacturing.....	93.0	94.1	93.7	93.7	0.0	133.4	139.5	139.5	139.9	0.3
Durable goods.....	91.0	92.7	92.4	92.7	0.3	131.3	137.6	137.8	138.6	0.6
Nondurable goods.....	96.3	96.5	96.3	95.7	-0.6	137.5	143.3	143.6	142.7	-0.6
Private service-providing.....	117.3	119.4	119.7	120.0	0.3	182.5	192.3	193.4	194.5	0.6
Trade, transportation, and utilities.....	106.7	107.2	107.0	107.1	0.1	158.8	165.7	166.3	166.8	0.3
Wholesale trade.....	102.6	103.5	103.6	103.8	0.2	149.1	157.6	158.4	159.0	0.4
Retail trade.....	94.7	95.1	94.9	94.9	0.0	142.9	149.5	149.6	150.0	0.3
Transportation and warehousing.....	146.3	147.4	146.7	146.5	-0.1	208.2	214.6	215.6	215.9	0.1
Utilities.....	102.5	101.7	101.7	101.0	-0.7	160.3	165.6	166.4	166.1	-0.2
Information.....	102.8	102.2	102.6	101.4	-1.2	168.5	174.9	174.2	175.0	0.5
Financial activities.....	111.0	111.4	112.0	112.2	0.2	178.4	185.6	186.0	187.1	0.6
Professional and business services.....	128.4	130.5	130.9	130.9	0.0	200.7	211.3	212.9	213.5	0.3
Private education and health services..	132.3	136.7	136.8	137.3	0.4	201.5	214.8	215.6	217.1	0.7
Leisure and hospitality.....	115.6	119.7	119.9	120.3	0.3	186.3	202.1	203.2	204.5	0.6
Other services.....	105.8	108.7	108.8	108.9	0.1	164.6	174.7	176.2	177.1	0.5

<sup>1</sup> The indexes of aggregate weekly hours are calculated by dividing the current month's estimates of aggregate hours by the corresponding 2007 annual average aggregate hours. Aggregate hours estimates are the product of estimates of average weekly hours and employment.

<sup>2</sup> The indexes of aggregate weekly payrolls are calculated by dividing the current month's estimates of aggregate weekly payrolls by the corresponding 2007 annual average aggregate weekly payrolls. Aggregate payrolls estimates are the product of estimates of average hourly earnings, average weekly hours, and employment.

p Preliminary

NOTE: Data have been revised to reflect March 2022 benchmark levels and updated seasonal adjustment factors.

**ESTABLISHMENT DATA**

**Table B-5. Employment of women on nonfarm payrolls by industry sector, seasonally adjusted**

Industry	Women employees (in thousands)				Percent of all employees			
	May 2022	Mar. 2023	Apr. 2023 <sup>p</sup>	May 2023 <sup>p</sup>	May 2022	Mar. 2023	Apr. 2023 <sup>p</sup>	May 2023 <sup>p</sup>
Total nonfarm.....	75,613	77,413	77,568	77,745	49.7	49.8	49.8	49.8
Total private.....	62,766	64,252	64,373	64,498	48.3	48.3	48.3	48.3
Goods-producing.....	4,862	4,976	4,984	4,994	23.0	23.1	23.2	23.2
Mining and logging.....	76	82	82	82	12.7	12.9	12.8	12.8
Construction.....	1,082	1,119	1,118	1,120	14.0	14.2	14.1	14.1
Manufacturing.....	3,704	3,775	3,784	3,792	29.0	29.1	29.1	29.2
Durable goods.....	1,963	2,016	2,022	2,028	24.7	24.9	25.0	25.0
Nondurable goods.....	1,741	1,759	1,762	1,764	35.9	36.0	36.1	36.2
Private service-providing.....	57,904	59,276	59,389	59,504	53.2	53.2	53.2	53.2
Trade, transportation, and utilities.....	11,275	11,357	11,361	11,370	39.4	39.3	39.3	39.3
Wholesale trade.....	1,820.1	1,865.1	1,862.3	1,855.9	30.5	30.8	30.8	30.7
Retail trade.....	7,523.7	7,515.3	7,519.3	7,531.8	48.7	48.4	48.4	48.4
Transportation and warehousing.....	1,791.3	1,830.5	1,833.6	1,836.3	26.9	27.2	27.2	27.2
Utilities.....	139.6	145.7	146.0	146.4	25.3	26.3	26.3	26.3
Information.....	1,222	1,254	1,253	1,248	39.8	40.6	40.5	40.5
Financial activities.....	5,043	5,063	5,077	5,081	55.8	55.7	55.7	55.7
Professional and business services.....	10,411	10,558	10,575	10,602	46.3	46.1	46.0	46.0
Private education and health services.....	18,605	19,254	19,325	19,394	76.9	76.8	76.8	76.8
Leisure and hospitality.....	8,311	8,660	8,662	8,666	52.9	52.4	52.3	52.2
Other services.....	3,037	3,130	3,136	3,143	53.5	53.6	53.7	53.7
Government.....	12,847	13,161	13,195	13,247	58.1	58.3	58.4	58.5

p Preliminary

NOTE: Data have been revised to reflect March 2022 benchmark levels and updated seasonal adjustment factors.

**ESTABLISHMENT DATA**

**Table B-6. Employment of production and nonsupervisory employees on private nonfarm payrolls by industry sector, seasonally adjusted<sup>1</sup>**

[In thousands]

Industry	May 2022	Mar. 2023	Apr. 2023 <sup>p</sup>	May 2023 <sup>p</sup>
Total private.....	105,885	108,166	108,398	108,654
Goods-producing.....	15,141	15,427	15,450	15,460
Mining and logging.....	455	480	483	488
Construction.....	5,711	5,811	5,823	5,821
Manufacturing.....	8,975	9,136	9,144	9,151
Durable goods.....	5,496	5,626	5,624	5,634
Nondurable goods.....	3,479	3,510	3,520	3,517
Private service-providing.....	90,744	92,739	92,948	93,194
Trade, transportation, and utilities.....	24,172	24,340	24,364	24,381
Wholesale trade.....	4,743.1	4,795.1	4,792.4	4,792.3
Retail trade.....	13,172.7	13,223.1	13,237.4	13,249.6
Transportation and warehousing.....	5,814.6	5,881.2	5,891.1	5,896.8
Utilities.....	441.7	440.7	443.4	442.7
Information.....	2,436	2,469	2,470	2,465
Financial activities.....	6,805	6,847	6,852	6,854
Professional and business services.....	18,026	18,221	18,267	18,330
Private education and health services.....	21,037	21,790	21,878	21,967
Leisure and hospitality.....	13,666	14,325	14,377	14,452
Other services.....	4,602	4,747	4,740	4,745

<sup>1</sup> Data relate to production employees in mining and logging and manufacturing, construction employees in construction, and nonsupervisory employees in the service-providing industries. These groups account for approximately four-fifths of the total employment on private nonfarm payrolls.

<sup>p</sup> Preliminary

NOTE: Data have been revised to reflect March 2022 benchmark levels and updated seasonal adjustment factors.

**ESTABLISHMENT DATA**

**Table B-7. Average weekly hours and overtime of production and nonsupervisory employees on private nonfarm payrolls by industry sector, seasonally adjusted<sup>1</sup>**

Industry	May 2022	Mar. 2023	Apr. 2023 <sup>p</sup>	May 2023 <sup>p</sup>
<b>AVERAGE WEEKLY HOURS</b>				
Total private.....	34.1	33.9	33.8	33.8
Goods-producing.....	40.8	40.4	40.5	40.5
Mining and logging.....	47.4	47.8	47.7	48.9
Construction.....	39.7	39.5	39.5	39.4
Manufacturing.....	41.2	40.6	40.7	40.7
Durable goods.....	41.5	40.8	40.9	41.0
Nondurable goods.....	40.7	40.3	40.3	40.2
Private service-providing.....	32.9	32.8	32.7	32.7
Trade, transportation, and utilities.....	34.2	34.0	33.9	33.9
Wholesale trade.....	39.2	38.7	38.8	38.8
Retail trade.....	30.5	30.3	30.2	30.2
Transportation and warehousing.....	37.8	37.7	37.5	37.4
Utilities.....	42.8	42.7	42.6	42.7
Information.....	36.5	35.8	35.8	35.6
Financial activities.....	37.2	37.2	37.1	37.2
Professional and business services.....	36.2	36.3	36.2	36.2
Private education and health services.....	32.7	32.7	32.6	32.6
Leisure and hospitality.....	24.6	24.2	24.2	24.2
Other services.....	31.2	31.2	31.2	31.3
<b>AVERAGE OVERTIME HOURS</b>				
Manufacturing.....	4.1	3.7	3.6	3.6
Durable goods.....	4.3	3.9	3.8	3.8
Nondurable goods.....	3.8	3.3	3.4	3.3

<sup>1</sup> Data relate to production employees in mining and logging and manufacturing, construction employees in construction, and nonsupervisory employees in the service-providing industries. These groups account for approximately four-fifths of the total employment on private nonfarm payrolls.

p Preliminary

NOTE: Data have been revised to reflect March 2022 benchmark levels and updated seasonal adjustment factors.

**ESTABLISHMENT DATA**

**Table B-8. Average hourly and weekly earnings of production and nonsupervisory employees on private nonfarm payrolls by industry sector, seasonally adjusted<sup>1</sup>**

Industry	Average hourly earnings				Average weekly earnings			
	May 2022	Mar. 2023	Apr. 2023 <sup>p</sup>	May 2023 <sup>p</sup>	May 2022	Mar. 2023	Apr. 2023 <sup>p</sup>	May 2023 <sup>p</sup>
Total private.....	\$27.39	\$28.52	\$28.62	\$28.75	\$934.00	\$966.83	\$967.36	\$971.75
Goods-producing.....	27.85	29.12	29.22	29.36	1,136.28	1,176.45	1,183.41	1,189.08
Mining and logging.....	32.28	33.63	33.90	33.71	1,530.07	1,607.51	1,617.03	1,648.42
Construction.....	32.15	33.79	33.92	34.07	1,276.36	1,334.71	1,339.84	1,342.36
Manufacturing.....	24.96	25.95	26.03	26.19	1,028.35	1,053.57	1,059.42	1,065.93
Durable goods.....	26.21	27.09	27.22	27.40	1,087.72	1,105.27	1,113.30	1,123.40
Nondurable goods.....	22.96	24.09	24.10	24.20	934.47	970.83	971.23	972.84
Private service-providing.....	27.29	28.39	28.50	28.62	897.84	931.19	931.95	935.87
Trade, transportation, and utilities.....	23.84	24.95	25.05	25.12	815.33	848.30	849.20	851.57
Wholesale trade.....	28.94	30.20	30.20	30.26	1,134.45	1,168.74	1,171.76	1,174.09
Retail trade.....	19.47	20.33	20.37	20.40	593.84	616.00	615.17	616.08
Transportation and warehousing.....	25.92	27.30	27.55	27.71	979.78	1,029.21	1,033.13	1,036.35
Utilities.....	42.25	43.72	44.17	44.33	1,808.30	1,866.84	1,881.64	1,892.89
Information.....	37.69	39.08	39.23	39.44	1,375.69	1,399.06	1,404.43	1,404.06
Financial activities.....	32.10	33.33	33.35	33.60	1,194.12	1,239.88	1,237.29	1,249.92
Professional and business services.....	32.29	33.81	33.99	34.12	1,168.90	1,227.30	1,230.44	1,235.14
Private education and health services.....	28.78	29.77	29.86	29.98	941.11	973.48	973.44	977.35
Leisure and hospitality.....	17.78	18.48	18.53	18.66	437.39	447.22	448.43	451.57
Other services.....	24.72	25.17	25.34	25.48	771.26	785.30	790.61	797.52

<sup>1</sup> Data relate to production employees in mining and logging and manufacturing, construction employees in construction, and nonsupervisory employees in the service-providing industries. These groups account for approximately four-fifths of the total employment on private nonfarm payrolls.

p Preliminary

NOTE: Data have been revised to reflect March 2022 benchmark levels and updated seasonal adjustment factors.

**ESTABLISHMENT DATA**

**Table B-9. Indexes of aggregate weekly hours and payrolls for production and nonsupervisory employees on private nonfarm payrolls by industry sector, seasonally adjusted<sup>1</sup>**

[2002=100]

Industry	Index of aggregate weekly hours <sup>2</sup>					Index of aggregate weekly payrolls <sup>3</sup>				
	May 2022	Mar. 2023	Apr. 2023 <sup>p</sup>	May 2023 <sup>p</sup>	Percent change from: Apr. 2023 - May 2023 <sup>p</sup>	May 2022	Mar. 2023	Apr. 2023 <sup>p</sup>	May 2023 <sup>p</sup>	Percent change from: Apr. 2023 - May 2023 <sup>p</sup>
Total private.....	120.3	122.2	122.1	122.4	0.2	220.3	232.9	233.5	235.2	0.7
Goods-producing.....	94.4	95.2	95.6	95.7	0.1	161.0	169.8	171.1	172.0	0.5
Mining and logging.....	114.6	121.9	122.4	126.8	3.6	215.2	238.5	241.4	248.6	3.0
Construction.....	113.5	114.9	115.2	114.8	-0.3	197.1	209.7	210.9	211.3	0.2
Manufacturing.....	84.9	85.1	85.4	85.5	0.1	138.6	144.5	145.4	146.4	0.7
Durable goods.....	85.7	86.2	86.4	86.8	0.5	140.2	145.8	146.8	148.4	1.1
Nondurable goods.....	83.4	83.3	83.6	83.3	-0.4	135.4	141.9	142.3	142.5	0.1
Private service-providing.....	127.2	129.6	129.5	129.8	0.2	238.1	252.4	253.1	254.9	0.7
Trade, transportation, and utilities.....	115.7	115.8	115.6	115.7	0.1	197.2	206.6	207.0	207.7	0.3
Wholesale trade.....	110.3	110.1	110.4	110.4	0.0	188.5	196.3	196.7	197.1	0.2
Retail trade.....	101.9	101.6	101.4	101.5	0.1	170.1	177.1	177.0	177.5	0.3
Transportation and warehousing.....	166.3	167.8	167.2	166.9	-0.2	274.4	291.6	293.2	294.4	0.4
Utilities.....	96.7	96.2	96.6	96.7	0.1	170.5	175.6	178.1	178.9	0.4
Information.....	101.5	100.9	100.9	100.2	-0.7	189.4	195.2	196.0	195.6	-0.2
Financial activities.....	119.1	119.9	119.6	120.0	0.3	235.3	245.8	245.5	248.1	1.1
Professional and business services.....	145.7	147.7	147.6	148.1	0.3	279.8	296.9	298.4	300.6	0.7
Private education and health services..	146.7	151.9	152.1	152.7	0.4	278.6	298.5	299.7	302.1	0.8
Leisure and hospitality.....	123.1	127.0	127.4	128.1	0.5	248.6	266.5	268.2	271.5	1.2
Other services.....	100.7	103.9	103.7	104.2	0.5	181.4	190.5	191.5	193.4	1.0

<sup>1</sup> Data relate to production employees in mining and logging and manufacturing, construction employees in construction, and nonsupervisory employees in the service-providing industries. These groups account for approximately four-fifths of the total employment on private nonfarm payrolls.

<sup>2</sup> The indexes of aggregate weekly hours are calculated by dividing the current month's estimates of aggregate hours by the corresponding 2002 annual average aggregate hours. Aggregate hours estimates are the product of estimates of average weekly hours and employment.

<sup>3</sup> The indexes of aggregate weekly payrolls are calculated by dividing the current month's estimates of aggregate weekly payrolls by the corresponding 2002 annual average aggregate weekly payrolls. Aggregate payrolls estimates are the product of estimates of average hourly earnings, average weekly hours, and employment.

p Preliminary

NOTE: Data have been revised to reflect March 2022 benchmark levels and updated seasonal adjustment factors.