



**Transmission of material in this release is embargoed until  
 8:30 a.m. (ET) Friday, February 16, 2024**

USDL 24-0269

Technical information: (202) 691-7705 • [ppi-info@bls.gov](mailto:ppi-info@bls.gov) • [www.bls.gov/ppi](http://www.bls.gov/ppi)  
 Media contact: (202) 691-5902 • [PressOffice@bls.gov](mailto:PressOffice@bls.gov)

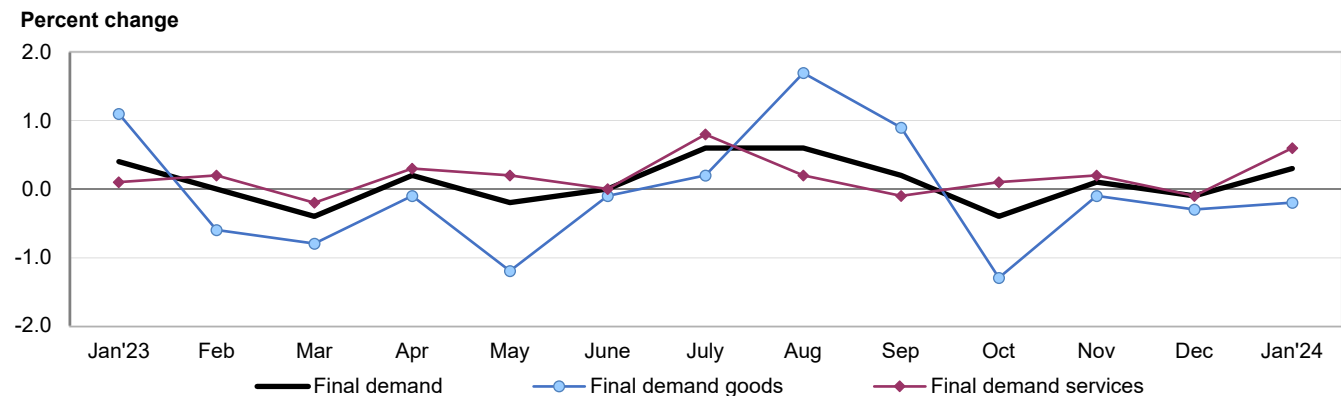
## PRODUCER PRICE INDEXES – JANUARY 2024

The Producer Price Index for final demand increased 0.3 percent in January, seasonally adjusted, the U.S. Bureau of Labor Statistics reported today. Final demand prices declined 0.1 percent in December 2023 and advanced 0.1 percent in November. (See table A.) On an unadjusted basis, the index for final demand rose 0.9 percent for the 12 months ended January 2024.

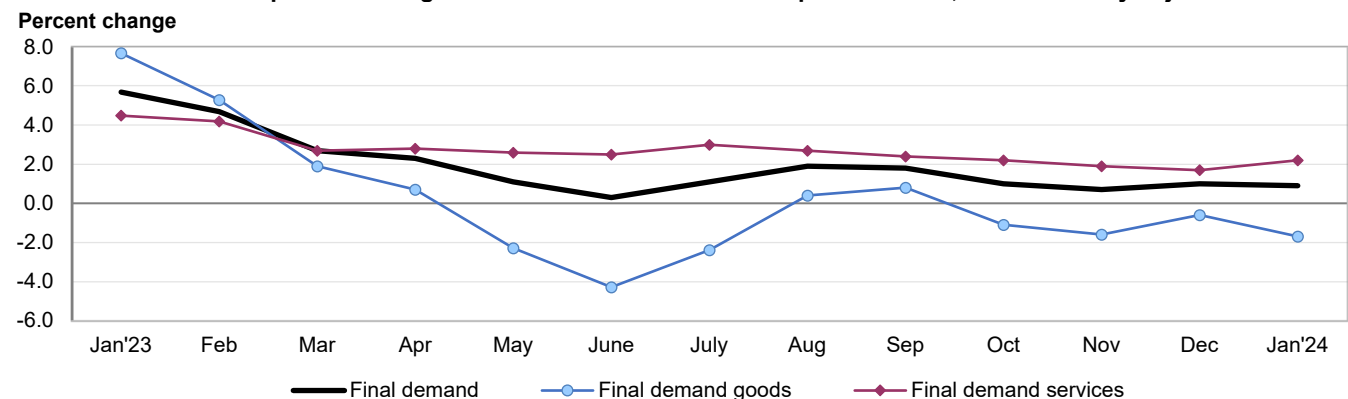
In January, the advance in the index for final demand can be traced to a 0.6-percent rise in prices for final demand services. In contrast, the index for final demand goods decreased 0.2 percent.

The index for final demand less foods, energy, and trade services rose 0.6 percent in January 2024, the largest advance since moving up 0.6 percent in January 2023. For the 12 months ended January 2024, prices for final demand less foods, energy, and trade services increased 2.6 percent.

**Chart 1. One-month percent changes in selected PPI final demand price indexes, seasonally adjusted**



**Chart 2. Twelve-month percent changes in selected PPI final demand price indexes, not seasonally adjusted**



## Final Demand

**Final demand services:** The index for final demand services moved up 0.6 percent in January, the largest increase since rising 0.8 percent in July 2023. In January, most of the advance is attributable to prices for final demand services less trade, transportation, and warehousing, which climbed 0.8 percent. The index for final demand trade services moved up 0.2 percent. (Trade indexes measure changes in margins received by wholesalers and retailers.) Conversely, prices for final demand transportation and warehousing services fell 0.4 percent.

*Product detail:* A 2.2-percent increase in the index for hospital outpatient care was a major factor in the January rise in prices for final demand services. The indexes for chemicals and allied products wholesaling, machinery and equipment wholesaling, portfolio management, traveler accommodation services, and legal services also moved higher. In contrast, prices for long-distance motor carrying decreased 1.0 percent. The indexes for computer hardware, software, and supplies retailing and for engineering services also moved lower. (See table 2.)

**Final demand goods:** The index for final demand goods moved down 0.2 percent in January, the fourth consecutive decline. Most of the January decrease is attributable to a 1.7-percent drop in prices for final demand energy. The index for final demand foods fell 0.3 percent. Conversely, prices for final demand goods less foods and energy increased 0.3 percent.

*Product detail:* Leading the January decline in the index for final demand goods, prices for gasoline fell 3.6 percent. The indexes for electric power; hay, hayseeds, and oilseeds; beef and veal; ethanol; and iron and steel scrap also moved lower. In contrast, prices for communication and related equipment increased 2.4 percent. The indexes for soft drinks and for liquified petroleum gas also moved higher.

**Table A. Monthly and 12-month percent changes in selected final demand price indexes, seasonally adjusted**

Month	Total final demand	Final demand less foods, energy, and trade	Final demand goods				Final demand services				Change in final demand from 12 months ago (unadj.)	Change in final demand less foods, energy, and trade from 12 mo. ago (unadj.)
			Total	Foods	Energy	Less foods and energy	Total	Trade	Transportation and warehousing	Other		
<b>2023</b>												
Jan...	0.4	0.6	1.1	-1.4	4.7	0.6	0.1	-0.9	-0.5	0.6	5.7	4.4
Feb...	0.0	0.3	-0.6	-2.3	-1.7	0.3	0.2	-0.1	-0.6	0.5	4.7	4.5
Mar...	-0.4	0.1	-0.8	0.3	-4.6	0.2	-0.2	-0.7	-0.7	0.1	2.7	3.7
Apr....	0.2	0.2	-0.1	-0.7	-0.1	0.1	0.3	0.5	-2.2	0.5	2.3	3.4
May. ...	-0.2	0.0	-1.2	-0.8	-5.4	0.1	0.2	0.7	-0.7	0.1	1.1	2.9
June...	0.0	0.2	-0.1	-0.4	0.4	-0.1	0.0	-0.8	-0.3	0.5	0.3	2.9
July....	0.6	0.2	0.2	0.3	0.8	0.0	0.8	1.7	0.2	0.4	1.1	2.9
Aug....	0.6	0.2	1.7	-0.4	8.9	0.1	0.2	-0.1	0.0	0.3	1.9	2.9
Sept. <sup>1</sup> ..	0.2	0.3	0.9	0.4	3.2	0.3	-0.1	-1.1	0.4	0.3	1.8	2.9
Oct. <sup>1</sup> ...	-0.4	0.1	-1.3	0.2	-6.5	0.1	0.1	0.0	0.5	0.0	1.0	2.8
Nov. <sup>1</sup> ..	0.1	0.1	-0.1	0.7	-1.8	0.1	0.2	0.4	-0.2	0.1	0.7	2.5
Dec. <sup>1</sup> ..	-0.1	0.2	-0.3	-0.7	-1.0	0.1	-0.1	-1.0	-0.2	0.3	1.0	2.6
<b>2024</b>												
Jan. ...	0.3	0.6	-0.2	-0.3	-1.7	0.3	0.6	0.2	-0.4	0.8	0.9	2.6

<sup>1</sup> Some of the percent changes shown here and elsewhere in this release may differ from those previously reported because seasonal adjustment factors have been recalculated to reflect developments during 2023. In addition, indexes for September 2023 through December 2023 have been recalculated to incorporate late reports and corrections by respondents. All indexes are subject to monthly revisions up to 4 months after original publication.

## Intermediate Demand by Commodity Type

Within intermediate demand in January, the index for processed goods fell 0.2 percent, prices for unprocessed goods edged up 0.1 percent, and the index for services rose 0.5 percent. (See tables B and C.)

**Processed goods for intermediate demand:** The index for processed goods for intermediate demand fell 0.2 percent in January, the fourth consecutive decrease. Leading the January decline, prices for processed energy goods dropped 1.7 percent. The index for processed foods and feeds moved down 1.5 percent. Conversely, prices for processed materials less foods and energy advanced 0.3 percent. For the 12 months ended in January, the index for processed goods for intermediate demand decreased 3.8 percent.

*Product detail:* Leading the decline in prices for processed goods for intermediate demand, the index for electric power fell 2.1 percent. Prices for basic organic chemicals, gasoline, meats, prepared animal feeds, and lubricating oil base stocks also moved lower. In contrast, the index for inedible fats and oils jumped 23.3 percent. Prices for utility natural gas and for cold rolled steel sheet and strip also increased.

**Unprocessed goods for intermediate demand:** The index for unprocessed goods for intermediate demand inched up 0.1 percent in January following three straight declines. The increase is attributable to prices for unprocessed energy materials, which rose 3.8 percent. Conversely, the index for unprocessed foodstuffs and feedstuffs fell 2.2 percent, and prices for unprocessed nonfood materials less energy moved down 1.7 percent. For the 12 months ended in January, the index for unprocessed goods for intermediate demand declined 15.0 percent.

*Product detail:* Leading the rise in prices for unprocessed goods for intermediate demand in January, the index for crude petroleum advanced 6.1 percent. Prices for slaughter steers and heifers; construction sand, gravel, and crushed stone; slaughter turkeys; and unprocessed finfish also increased. In contrast, the index for corn declined 6.5 percent. Prices for hay, hayseeds, and oilseeds; iron and steel scrap; and natural gas also moved lower.

**Table B. Monthly and 12-month percent changes in selected intermediate demand price indexes for goods by commodity type, seasonally adjusted**

Month	Processed goods for intermediate demand					Unprocessed goods for intermediate demand				
	Total	Foods and feeds	Energy goods	Less foods and energy	Total, change from 12 months ago (unadj.)	Total	Food-stuffs and feed-stuffs	Energy materials	Nonfood materials less energy	Total, change from 12 months ago (unadj.)
<b>2023</b>										
Jan.....	1.0	0.2	4.4	0.1	3.9	-4.2	-4.8	-7.0	2.5	2.8
Feb.....	-0.4	-1.9	-1.8	0.2	2.1	-5.2	-1.3	-10.9	-0.6	-10.4
Mar.....	-0.8	-0.2	-3.1	-0.2	-1.0	-4.6	-0.6	-11.1	-0.6	-16.8
Apr.....	-0.7	-1.3	-3.4	0.2	-3.4	0.6	-2.2	3.7	1.0	-20.3
May.....	-1.4	-1.3	-5.9	-0.1	-7.2	-4.9	-4.1	-8.0	-1.7	-28.2
June.....	-0.5	-1.3	-0.6	-0.4	-9.4	-1.2	0.3	-2.8	-1.4	-32.1
July.....	-0.3	1.0	-0.2	-0.5	-7.6	2.5	-0.8	10.1	-2.9	-24.1
Aug.....	2.0	0.6	11.2	-0.2	-4.4	2.1	-0.1	6.0	-0.2	-26.2
Sept. <sup>1</sup> ....	0.5	0.7	2.1	0.0	-3.7	2.9	1.2	6.8	-0.4	-21.5
Oct. <sup>1</sup> ....	-1.0	-0.2	-4.3	-0.1	-4.6	-1.6	-2.1	-2.1	0.0	-14.8
Nov. <sup>1</sup> ....	-0.5	-0.5	-1.8	-0.2	-4.5	-2.1	-0.4	-5.4	0.8	-14.0
Dec. <sup>1</sup> ....	-0.5	-0.6	-2.8	0.2	-2.7	-4.4	-3.3	-8.6	0.6	-19.0
<b>2024</b>										
Jan.....	-0.2	-1.5	-1.7	0.3	-3.8	0.1	-2.2	3.8	-1.7	-15.0

<sup>1</sup> Some of the percent changes shown here and elsewhere in this release may differ from those previously reported because seasonal adjustment factors have been recalculated to reflect developments during 2023. In addition, indexes for September 2023 through December 2023 have been recalculated to incorporate late reports and corrections by respondents. All indexes are subject to monthly revisions up to 4 months after original publication.

**Services for intermediate demand:** In January, the index for services for intermediate demand moved up 0.5 percent, the third consecutive advance. Leading the January increase, prices for services less trade, transportation, and warehousing for intermediate demand rose 0.7 percent. The index for trade services for intermediate demand edged up 0.1 percent. Conversely, prices for transportation and warehousing for intermediate demand declined 0.1 percent. For the 12 months ended in January, the index for services for intermediate demand advanced 3.1 percent.

*Product detail:* A 1.6-percent increase in the index for nonresidential real estate rents was a major factor in the January advance in prices for services for intermediate demand. The indexes for chemicals and allied products wholesaling; portfolio management; legal services; residential property management fees; and metals, minerals, and ores wholesaling also moved higher. In contrast, prices for long-distance motor carrying declined 1.0 percent. The indexes for food and alcohol wholesaling and for radio advertising time sales also decreased.

**Table C. Monthly and 12-month percent changes in selected intermediate demand price indexes for services by commodity type, seasonally adjusted**

Month	Services for intermediate demand				Total, change from 12 months ago (unadj.)
	Total	Trade	Transportation and warehousing	Other	
<b>2023</b>					
Jan.....	0.9	0.8	0.5	1.1	6.3
Feb.....	0.3	-0.7	0.0	0.6	6.2
Mar.....	-0.2	0.9	-0.9	-0.4	4.5
Apr.....	0.6	0.9	-1.0	0.9	4.4
May.....	0.1	-0.3	-0.4	0.4	3.9
June.....	0.0	-0.9	-0.2	0.3	4.4
July.....	0.7	2.1	0.9	0.2	4.7
Aug.....	-0.1	-0.6	-0.7	0.1	4.2
Sept. <sup>1</sup> ....	0.3	-0.4	0.8	0.4	4.0
Oct. <sup>1</sup> ....	-0.1	1.4	0.4	-0.5	3.4
Nov. <sup>1</sup> ....	0.5	1.3	-0.1	0.4	3.1
Dec. <sup>1</sup> ....	0.4	-0.3	0.8	0.5	3.5
<b>2024</b>					
Jan.....	0.5	0.1	-0.1	0.7	3.1

<sup>1</sup> Some of the percent changes shown here and elsewhere in this release may differ from those previously reported because seasonal adjustment factors have been recalculated to reflect developments during 2023. In addition, indexes for September 2023 through December 2023 have been recalculated to incorporate late reports and corrections by respondents. All indexes are subject to monthly revisions up to 4 months after original publication.

### **Intermediate Demand by Production Flow**

**Stage 4 intermediate demand:** The index for stage 4 intermediate demand moved up 0.4 percent in January, the largest increase since a 0.4-percent rise in August 2023. In January, prices for total services inputs to stage 4 intermediate demand advanced 0.8 percent. Conversely, the index for total goods inputs declined 0.2 percent. (See table D.) Increases in the indexes for chemicals and allied products wholesaling, portfolio management, nonresidential real estate rents, legal services, residential property management fees, and inedible fats and oils outweighed decreasing prices for electric power, engineering services, and meats. For the 12 months ended in January, the index for stage 4 intermediate demand rose 1.5 percent.

**Stage 3 intermediate demand:** Prices for stage 3 intermediate demand were unchanged in January following three consecutive declines. In January, a 0.2-percent advance in the index for total services inputs to stage 3 intermediate demand offset a 0.3-percent decrease in prices for total goods inputs. Increases in the indexes for chemicals and allied products wholesaling, legal services, nonresidential real estate rents, slaughter steers and heifers, and inedible fats and oils offset falling prices for corn, raw milk, slaughter chickens, cable network advertising time sales, and primary basic organic chemicals. For the 12 months ended in January, the index for stage 3 intermediate demand moved down 2.6 percent.

**Stage 2 intermediate demand:** Prices for stage 2 intermediate demand increased 0.5 percent in January following a 1.4-percent decline in December. The index for total goods inputs to stage 2 intermediate demand advanced 0.6 percent, and prices for total services inputs moved up 0.4 percent. Increases in the indexes for crude petroleum, legal services, chemicals and allied products wholesaling, loan services (partial), liquefied petroleum gas, and traveler accommodation services outweighed declines in the indexes for basic organic chemicals, oilseeds, and fuels and lubricants retailing. For the 12 months ended in January, prices for stage 2 intermediate demand decreased 3.8 percent.

**Stage 1 intermediate demand:** Prices for stage 1 intermediate demand rose 0.2 percent in January following three consecutive declines. In January, the index for total services inputs to stage 1 intermediate demand increased 0.7 percent. In contrast, prices for total goods inputs fell 0.3 percent. Advances in the indexes for chemicals and allied products wholesaling; inedible fats and oils; traveler accommodation services; portfolio management; metals, minerals, and ores wholesaling; and utility natural gas outweighed decreasing prices for basic organic chemicals, electric power, and engineering services. For the 12 months ended in January, the index for stage 1 intermediate demand moved down 0.7 percent.

**Table D. Monthly percent changes in selected intermediate demand price indexes by production flow, seasonally adjusted**

Month	Stage 4 intermediate demand			Stage 3 intermediate demand			Stage 2 intermediate demand			Stage 1 intermediate demand		
	Total	Goods inputs	Ser-vices inputs	Total	Goods inputs	Ser-vices inputs	Total	Goods inputs	Ser-vices inputs	Total	Goods inputs	Ser-vices inputs
<b>2023</b>												
Jan.....	1.0	0.7	1.2	0.3	-0.2	0.8	-0.9	-2.8	0.8	0.8	0.8	0.8
Feb.....	0.0	-0.1	0.2	-0.3	-0.8	0.0	-1.5	-4.7	1.0	-0.3	-0.5	-0.1
Mar.....	-0.2	-0.4	0.0	-0.6	-0.9	-0.3	-2.5	-4.9	-0.6	-0.3	-0.8	0.1
Apr.....	0.2	-0.2	0.6	-0.4	-1.6	0.6	0.9	1.1	0.7	-0.2	-0.9	0.5
May.....	-0.1	-0.5	0.2	-1.2	-2.6	-0.1	-1.4	-4.0	0.5	-0.8	-1.5	-0.2
June.....	0.0	-0.1	0.0	-0.3	-0.4	-0.2	-1.0	-2.0	-0.2	-0.3	-0.6	0.1
July.....	0.4	-0.1	0.8	-0.3	-1.3	0.6	1.9	3.9	0.6	0.1	-0.7	0.9
Aug.....	0.4	0.6	0.3	1.0	3.1	-0.6	0.7	2.2	-0.4	1.3	2.4	0.2
Sept. <sup>1</sup> ....	0.3	0.3	0.3	0.5	0.9	0.3	1.2	3.0	-0.1	0.3	0.3	0.2
Oct. <sup>1</sup> .....	-0.3	-0.5	-0.2	-0.6	-1.8	0.4	-0.3	-1.2	0.3	-0.4	-0.8	-0.1
Nov. <sup>1</sup> .....	0.2	-0.1	0.5	-0.2	-1.1	0.6	-0.9	-2.4	0.2	-0.1	-0.7	0.6
Dec. <sup>1</sup> .....	0.2	0.0	0.3	-0.4	-1.6	0.6	-1.4	-3.8	0.4	-0.2	-0.7	0.2
<b>2024</b>												
Jan.....	0.4	-0.2	0.8	0.0	-0.3	0.2	0.5	0.6	0.4	0.2	-0.3	0.7

<sup>1</sup> Some of the percent changes shown here and elsewhere in this release may differ from those previously reported because seasonal adjustment factors have been recalculated to reflect developments during 2023. In addition, indexes for September 2023 through December 2023 have been recalculated to incorporate late reports and corrections by respondents. All indexes are subject to monthly revisions up to 4 months after original publication.

**The Producer Price Index for February 2024 is scheduled to be released on Thursday, March 14, 2024, at 8:30 a.m. (ET).**

\*\*\*\*\*

## Recalculation of Seasonal Adjustment Factors

Effective with this release, seasonal adjustment factors have been recalculated to reflect price-movement patterns during 2023 for the Final Demand-Intermediate Demand (FD-ID) system and commodity-grouping indexes. This routine annual recalculation may affect previously published seasonally adjusted indexes and percent changes for January 2019 through December 2023.

Revised seasonally adjusted data for this period, as well as seasonal adjustment factors for directly adjusted commodity indexes to be used through December 2024, were released February 14, 2024. To obtain this information, contact the Producer Price Index Section of Index Analysis and Public Information at [ppi-info@bls.gov](mailto:ppi-info@bls.gov) or (202) 691-7705, or visit the Producer Price Index homepage at [www.bls.gov/ppi](http://www.bls.gov/ppi).

Tables E and F below provide monthly seasonally adjusted percent changes for major FD-ID system indexes in 2023, based on former and recalculated seasonal factors. These percent changes include final price data through August 2023 and may differ from values shown in tables A through C of this release, which include final price data through September 2023 and revised interim data for October through December.

**Table E. Over-the-month percent changes in major final demand indexes, seasonally adjusted, using former and recalculated seasonal factors for 2023**

Month	Final demand		Final demand goods		Final demand services		Final demand less foods, energy, and trade services	
	Former	Recalculated	Former	Recalculated	Former	Recalculated	Former	Recalculated
January	0.4	0.4	1.3	1.1	0.0	0.1	0.5	0.6
February	0.0	0.0	-0.4	-0.6	0.2	0.2	0.3	0.3
March	-0.4	-0.4	-1.1	-0.8	-0.1	-0.2	0.1	0.1
April	0.2	0.2	0.1	-0.1	0.2	0.3	0.2	0.2
May	-0.3	-0.2	-1.5	-1.2	0.2	0.2	0.0	0.0
June	0.1	0.0	0.0	-0.1	0.1	0.0	0.3	0.2
July	0.5	0.6	0.3	0.2	0.7	0.8	0.2	0.2
August	0.7	0.6	1.9	1.7	0.2	0.2	0.2	0.2
September	0.4	0.4	0.8	0.8	0.2	0.2	0.3	0.3
October	-0.4	-0.4	-1.4	-1.3	0.0	0.0	0.1	0.1
November	-0.1	-0.1	-0.3	-0.2	0.0	0.0	0.1	0.0
December	-0.1	-0.2	-0.4	-0.3	0.0	-0.1	0.2	0.2

**Table F. Over-the-month percent changes in major intermediate demand indexes, seasonally adjusted, using former and recalculated seasonal factors for 2023**

Month	Processed goods for intermediate demand		Unprocessed goods for intermediate demand		Services for intermediate demand	
	Former	Recalculated	Former	Recalculated	Former	Recalculated
January	1.1	1.0	-4.7	-4.2	1.0	0.9
February	-0.4	-0.4	-4.9	-5.2	0.3	0.3
March	-1.0	-0.8	-4.7	-4.6	-0.3	-0.2
April	-0.5	-0.7	1.1	0.6	0.7	0.6
May	-1.6	-1.4	-5.2	-4.9	0.2	0.1
June	-0.5	-0.5	-1.0	-1.2	0.1	0.0
July	-0.3	-0.3	2.4	2.5	0.6	0.7
August	2.1	2.0	2.3	2.1	-0.1	-0.1
September	0.6	0.5	3.3	2.9	0.2	0.2
October	-1.0	-1.0	-2.0	-1.6	0.0	0.0
November	-0.4	-0.6	-2.4	-2.3	0.3	0.3
December	-0.6	-0.5	-4.4	-4.3	0.4	0.4

# Technical Note

## Brief Explanation of Producer Price Indexes

The Producer Price Index (PPI) of the Bureau of Labor Statistics (BLS) is a family of indexes that measures the average change over time in prices received (price changes) by producers for domestically produced goods, services, and construction. PPIs measure price change from the perspective of the seller. This contrasts with other measures, such as the Consumer Price Index (CPI). CPIs measure price change from the purchaser's perspective.

More than 10,000 PPIs for individual products and groups of products are released each month. PPIs are available for the products of virtually every industry in the mining and manufacturing sectors. Over time, new PPIs have been introduced for products of industries in the services and construction sectors of the U.S. economy. As of January 2023, the PPI covered 69 percent of services as measured by 2017 Census revenue, and 17 percent of construction.

More than 64,000 price quotations per month are organized into three sets of PPIs: (1) Final demand-Intermediate demand (FD-ID) indexes, (2) commodity indexes, and (3) indexes for the net output of industries and their products. The FD-ID structure organizes products by class of buyer and degree of fabrication as well as by stage of production. The commodity structure organizes products by similarity of end use or product type. The entire output of various industries is sampled to derive price indexes for the net output of industries and their products.

### Final Demand–Intermediate Demand Indexes

The PPI FD-ID structure measures price change for goods, services, and construction sold to final demand and to intermediate demand. The FD-ID system replaced the PPI stage-of-processing (SOP) system as PPI's primary aggregation model with the release of data for January 2014. The FD-ID model expands coverage beyond that of the SOP system through the addition of services, construction, exports, and government purchases.

Compared with finished goods under the SOP system, the PPI for final demand goods includes nearly a 50 percent expansion of coverage. This increase can be traced to the addition of government purchases and exports. For overall final demand, expansion to include final demand services represents an even larger increase in coverage. In December 2022, final demand goods were about 30.7 percent of overall final demand, final demand services were roughly 66.6 percent, and final demand construction was about 2.7 percent of final demand. Within intermediate demand, coverage of services for intermediate demand resulted in about a 45 percent increase in coverage of the intermediate demand portion of the economy.

FD-ID indexes are constructed from commodity-based producer output price indexes. Commodities are allocated to aggregate indexes primarily based on the type of buyer. The main source of data used to determine the type of buyer is the "Use of commodities by industries, before redefinition," table

from the Benchmark Input-Output Accounts of the U.S. In many cases, the same commodity is purchased by different types of buyers. As a result, commodities are often included in several FD-ID indexes. For example, regular gasoline is purchased for personal consumption, export, government use, and business use. The PPI program publishes only one commodity index for regular gasoline (wpu057104), reflecting sales to all types of buyers, and this index is used in all aggregations regardless of whether the gasoline is sold for personal consumption, as an export, to government, or to businesses. Proportions based on BEA "Use of Commodities" data are used to allocate the correct portion of the total weight of gasoline to each use category. In cases when buyer type is an important price determining characteristic, indexes are created based on specific buyer type. For example, within the PPI category for loan services, separate indexes for consumer loans and business loans were constructed. For more information relating to the FD-ID structure, see "A new, experimental system of indexes from the PPI program" in the February 2011 *Monthly Labor Review*.

**Final Demand:** The final demand portion of the FD-ID structure measures price change for commodities sold for personal consumption, capital investment, government, and export. The system is composed of six main price indexes: final demand goods; final demand trade services; final demand transportation and warehousing services; final demand services less trade, transportation, and warehousing; final demand construction; and overall final demand.

The final demand goods index measures price change for both unprocessed and processed goods sold to final demand. Fresh fruits sold to consumers and computers sold for capital investment are examples of transactions included in the final demand goods price index. The final demand trade services index measures price change for the retailing and wholesaling of merchandise sold to final demand, generally without transformation. (Trade indexes measure changes in margins received by wholesalers and retailers.) The final demand transportation and warehousing services index tracks price change for transportation of passengers, as well as, transportation of cargo sold to final demand, and also includes prices for warehousing and storage of goods sold to final demand. The final demand services less trade, transportation, and warehousing index measures price change for all services other than trade and transportation sold to final demand. Publishing, banking, lodging, and health care are examples of these services. The final demand construction index tracks price change for new construction, as well as maintenance and repair construction sold to final demand. Construction of office buildings is an example of a commodity that would be included in the final demand construction index. Lastly, the overall final demand index tracks price change for all types of commodities sold to final demand by combining the five final demand component indexes described above.

**Intermediate Demand:** The intermediate demand portion of the FD-ID system tracks price change for goods, services, and construction products sold to businesses as inputs to

production, excluding capital investment. The system includes two parallel treatments of intermediate demand. The first treatment organizes intermediate demand commodities by type. The second organizes intermediate demand commodities into production stages, with the explicit goal of developing a forward-flow model of production and price change.

The intermediate demand by commodity type portion of the system organizes commodities by similarity of product. The system is composed of six main price indexes: unprocessed goods for intermediate demand; processed goods for intermediate demand; intermediate demand trade services; intermediate demand transportation and warehousing services; intermediate demand services less trade, transportation, and warehousing; and intermediate demand construction.

The unprocessed goods for intermediate demand price index measures price change for goods sold to businesses as inputs to production that have undergone no fabrication. Crude petroleum sold to refineries is an example of an unprocessed good sold to intermediate demand. The processed goods for intermediate demand index tracks price change for fabricated goods sold as business inputs. Examples include car parts sold to car manufacturers and gasoline sold to trucking companies. The index for trade services for intermediate demand measures price change for the services of retailing and wholesaling goods purchased by businesses as inputs to production. The intermediate demand transportation and warehousing services index measures price change for business travel, as well as, transportation and warehousing of cargo sold to intermediate demand. The intermediate demand services less trade, transportation, and warehousing index measures price change for services other than trade, transportation, and warehousing sold as inputs to production. Legal and accounting services purchased by businesses are examples of intermediate demand services excluding trade, transportation, and warehousing. Finally, the construction for intermediate demand index measures price change for construction purchased by firms as inputs to production. The index for construction for intermediate demand tracks price change for maintenance and repair construction purchased by firms.

The production flow treatment of intermediate demand is a stage-based system of price indexes. These indexes can be used to study price transmission across stages of production and final demand. This system is constructed in a manner that maximizes forward flow of production between stages, while minimizing back-flow of production. The production flow treatment contains four main indexes: intermediate demand stage 1, intermediate demand stage 2, intermediate demand stage 3, and intermediate demand stage 4.

Indexes for the four stages were developed by first assigning each industry in the economy to one of four stages of production, where industries assigned to the fourth stage primarily produce output consumed as final demand, industries in the third stage primarily produce output consumed by stage 4 industries, industries assigned to the second stage primarily produce output consumed by stage 3 industries, and industries assigned to the first stage produce output primarily consumed by stage 2 industries. The four indexes then track prices for the net inputs consumed by industries in each of the four stages of production. The stage 4

intermediate demand index, for example, tracks price change for inputs consumed, but not produced, by industries included in the fourth stage of production. Hence, the index tracks price change in inputs to industries that primarily produce final demand commodities (stage 4 producers primarily produce commodities sold to final demand).

Examples of heavily weighted goods-producing industries in stage 4 include the manufacture of light trucks and utility vehicles, automobiles, and pharmaceuticals. Retail trade, food service and drinking places, and hospitals are examples of heavily weighted service industries included in stage 4. Stage 4 also includes all new construction industries. Examples of goods consumed by stage 4 industries include motor vehicle parts, commercial electric power, plastic construction products, biological products, and beef and veal. Engineering services, machinery and equipment wholesaling, long distance motor carrying, and legal services constitute examples of services consumed by stage 4 industries.

Examples of highly weighted goods-producing industries included in stage 3 are motor vehicle parts manufacturing, animal (except poultry) slaughtering and processing, and semiconductor manufacturing. Services industries classified in stage 3 include wholesale trade; insurance carriers; architecture, engineering, and related services; and hotels and motels. Examples of goods consumed by stage 3 industries include slaughter steers and heifers, industrial electric power, and hot rolled steel bars, plates, and structural shapes. Services commonly consumed by stage 3 industries include commissions from sales of property and casualty insurance, business loans, temporary help services, and administrative and general management consulting services.

Petroleum refineries; electricity generation, transmission, and distribution; natural gas distribution; cattle ranching and farming; and plastic materials and resin manufacturing are among the goods-based industries assigned to stage 2. Services industries that are heavily weighted in stage 2 include management of companies and enterprises; non-depository credit intermediation; insurance agencies and brokerages; and services to buildings and dwellings. Goods commonly purchased by stage 2 industries include crude oil, natural gas, formula feeds, and primary basic organic chemicals. Services that are heavily weighted in the intermediate demand stage 2 index are legal services, business loans, and cellular phone and other wireless telecommunication.

Goods producing industries in stage 1 include oil and gas extraction, paper mills, and grain farming. Real estate, legal services, and advertising services are examples of highly weighted services industries included in stage 1. Examples of goods consumed by stage 1 industries are commercial and industrial electric power and gasoline. Services commonly consumed by stage 1 industries include solid waste collection, chemicals and allied products wholesaling, and guestroom or unit rental. It should be noted that all inputs purchased by stage 1 industries are by definition produced either within stage 1 or by latter stages of processing, leaving stage 1 less useful for price transmission analysis. For additional information on industry stage assignments, see [www.bls.gov/ppi/fd-id/ppi-intermediate-demand-by-production-flow-industry-stage-assignments.htm](http://www.bls.gov/ppi/fd-id/ppi-intermediate-demand-by-production-flow-industry-stage-assignments.htm).



## Comparing the PPI with CPI

Although some data users utilize the PPI as a potential indicator of the Consumer Price Index (CPI), there are many reasons why the PPI and the CPI may diverge. The scope of the personal consumption portion of the PPI includes all marketable output sold by domestic producers for households. The scope of the CPI includes goods and services provided by business or government, where explicit user charges are paid by consumers. For example, the most heavily weighted item in the CPI, owners' equivalent rent, is excluded from the PPI. The scope of the CPI includes imports. The PPI excludes imports. The CPI only includes components of personal consumption directly paid for by the consumers, while the PPI includes components of personal consumption that may not be paid for by consumers. For example, the PPI includes medical services paid for by third parties. In contrast to CPI, PPI does not completely cover services. PPIs exclude taxes, since they do not represent producer revenue. Conversely, sales and other taxes paid by consumers are part of household expenditure and are included in the CPI. Additional technical differences between PPI and CPI also exist. For more information see "Comparing new final demand producer price indexes with other Government price indexes," *Monthly Labor Review*, January 2014, at [www.bls.gov/opub/mlr/](http://www.bls.gov/opub/mlr/).

## Commodity Indexes

The commodity classification of the PPI organizes goods, services, and construction by similarity of product or end use, disregarding industry of origin. With the release of data for July 2009, PPI expanded its commodity structure to include indexes for services and construction products. Prior to this date, the PPI commodity structure only included products from goods producing sectors. Table 9 of the *PPI Detailed Report* includes data for commodity indexes, organized in a hierarchal structure, including major groupings, subgroups, product classes, sub-product classes, and individual items.

## Industry Net-Output Price Indexes

PPIs for the net output of industries and their products are grouped according to the North American Industry Classification System (NAICS). Prior to the release of January 2004, industry-based PPIs were published according to the Standard Industrial Classification (SIC) system. Industry price indexes are compatible with other economic time series organized by industry, such as data on employment, wages, and productivity. Table 11 of the *PPI Detailed Report* includes data for NAICS industries and industry groups (3-, 4-, 5-, and 6-digit codes), Census product classes (7- and 8-digit codes), products (9-digit codes), more detailed sub-products (11-digit codes), and, for some industries, indexes for other sources of revenue.

Indexes may represent one of three kinds of product categories. Every industry has primary product indexes that show changes in prices received by establishments classified in the industry for products made primarily, but not necessarily exclusively, by that industry. The industry classification of an establishment is determined by which products make up a plurality of its total shipment value. In

addition, most industries have secondary product indexes that show changes in prices received by establishments for products chiefly made in some other industry. Some industries have miscellaneous receipts indexes that track price changes for other sources of revenue received by establishments within the industry that are not derived from sales of their products; for example, resales of purchased materials, or revenues from parking lots owned by a manufacturing plant.

## Data Collection

PPIs are constructed using selling prices reported by establishments of all sizes, selected by probability sampling, with the probability of selection proportionate to size. Individual items and transaction terms also are chosen by probability proportionate to size. BLS strongly encourages cooperating companies to supply actual transaction prices at the time of shipment to minimize the use of list prices. Prices submitted by survey respondents are effective on the Tuesday of the week containing the 13th day of the month. The survey is conducted online via the BLS Internet Data Collection Facility (IDCF). Data provided by survey respondents are supplemented with data from other sources for some areas.

Price data are provided by survey respondents on a voluntary and confidential basis; only sworn BLS employees are allowed access to individual company price reports. BLS publishes price indexes, not actual prices. All PPIs are subject to monthly revisions up to 4 months after original publication to reflect the availability of late reports and corrections by respondents.

BLS periodically updates the PPI sample of survey respondents to better reflect current conditions when the structure, membership, technology, or product mix of an industry shifts significantly and to spread reporting burden among smaller firms. Information on these resampling efforts are noted in the *PPI News Release* and *PPI Detailed Report* in the months they occur.

As part of an ongoing effort to expand coverage to sectors of the economy other than mining and manufacturing, an increasing number of service and construction sector industries have been introduced into the PPI. The following list of industries introduced since the mid-1990s includes the month and year in which an article describing the industry's content appeared in the *PPI Detailed Report*.

### Service and construction sector industries introduced into the Producer Price Index, by SIC or NAICS code at their date of introduction and the *PPI Detailed Report* issue that announces their introduction

Title	Code	<i>PPI Detailed Report</i> Issue
	<b>SIC</b>	
Wireless telecommunications .....	4812	July 1999
Telephone communications, except radio telephone .....	4813	July 1995
Television broadcasting .....	4833	July 2002
Grocery stores .....	5411	July 2000
Meat and fish (seafood) markets .....	5421	July 2000
Fruit and vegetable markets .....	5431	July 2000

Title	Code	PPI Detailed Report Issue
Candy, nut, and confectionery stores	5441	July 2000
<b>SIC</b>		
Retail bakeries	5461	July 2000
Miscellaneous food stores	5499	July 2000
New car dealers	5511	July 2000
Gasoline service stations	5541	January 2002
Boat dealers	5551	January 2002
Recreational vehicle dealers	5561	January 2002
Miscellaneous retail	59	January 2001
Security brokers, dealers, and investment bankers	6211	January 2001
Investment advice	6282	January 2003
Life insurance carriers	6311	January 1999
Property and casualty insurance	6331	July 1998
Insurance agencies and brokerages	6412	January 2003
Operators and lessors of nonresidential buildings	6512	January 1996
Real estate agents and managers	6531	January 1996
Prepackaged software	7372	January 1998
Data processing services	7374	January 2002
Home health care services	8082	January 1997
Legal services	8111	January 1997
Engineering design, analysis, and consulting services	8711	January 1997
Architectural design, analysis, and consulting services	8712	January 1997
Premiums for property and casualty insurance	9331	July 1998
<b>NAICS</b>		
New Industrial building construction	236211	January 2008
New warehouse building construction	236221	July 2005
New school construction	236222	July 2006
New office construction	236223	January 2007
New health care building construction	236224	January 2013
Concrete contractors, nonresidential building work	23811X	July 2008
Roofing contractors, nonresidential building work	23816X	July 2008
Electrical contractors, nonresidential building work	23821X	July 2008
Plumbing / HVAC contractors, nonresidential building work	23822X	July 2008
Merchant wholesalers, durable goods	423	July 2005
Merchant wholesalers, nondurable goods	424	July 2005

Electronics and appliance stores	443	January 2004
Building material and garden equipment and supplies dealers	444	January 2004
Sporting goods, hobby, book, and music stores	451	January 2004
General merchandise stores	452	January 2004
Miscellaneous store retailers	453	January 2004
Pipeline transportation of natural gas	486210	June 2022
Internet service providers	518111	July 2005
Internet publishing and web search portals	519130	January 2010
Commercial banking	522110	January 2005
Savings institutions	522120	January 2005
Direct health and medical insurance carriers	524114	July 2004

Title	Code	PPI Detailed Report Issue
<b>NAICS</b>		
Construction, mining, and forestry machinery and equipment rental and leasing	532412	January 2005
Management consulting services	541610	January 2007
Security guards and patrol services	561612	July 2005
Offices of dentists	621210	January 2011
Blood and organ banks	621991	January 2007
Amusement and theme parks	713110	July 2006
Golf courses and country clubs	713910	July 2006
Fitness and recreational sports centers	713940	July 2005
Commercial machinery repair and maintenance	811310	July 2007

## Weights

Weights for most commodity groupings of the PPI, as well as, weights for commodity-based aggregate indexes calculated from commodity groupings, such as FD-ID indexes, currently reflect 2017 values of shipments as reported in the *Census of Manufactures* and other sources. From January 2018 to December 2022, PPI weights were derived from 2012 shipment values. Industry indexes now are calculated under the 2022 NAICS structure utilizing 2017 value of shipment weights and 2012 net output ratios. The periodic update of the value weights used to calculate the PPI is done to more accurately reflect changes in production and marketing patterns in the economy.

Net output values of shipments are used as weights for industry indexes. Net output values refer to the value of shipments from establishments within the industry to buyers outside the industry. However, weights for commodity indexes are based on gross shipment values, including values of shipments between establishments within the same industry. As a result, broad commodity grouping indexes, such as the PPI for All Commodities (which is composed of major commodity groupings 01 through 15), are affected by the

multiple counting of price change at successive stages of processing, which can lead to exaggerated or misleading signals about inflation. The intermediate demand by commodity type FD-ID indexes partially correct for this defect, but industry indexes, final demand FD-ID indexes, and intermediate demand by production flow FD-ID indexes consistently correct for this at all levels of aggregation. Therefore, industry and FD-ID indexes are more appropriate than broad commodity groupings for analysis of general price trends.

### Price Index Reference Base

Effective with publication of January 1988 data, many important PPI series (including most commodity groups and individual items) were placed on a new reference base, 1982 = 100. From 1971 through 1987, the standard reference base for most PPI series was 1967 = 100. Except for rounding differences, the shift to the new reference base did not alter any previously published percent changes for affected PPI series. (See “Calculating Index Changes,” below.) The 1982 reference base is not used for commodity indexes with a base later than December 1981 or for industry net output indexes and their products. The FD-ID indexes typically have a reference base of November 2009 = 100.

For further information on the underlying concepts and methodology of the Producer Price Index, see chapter 14, “Producer Prices,” in the *BLS Handbook of Methods*. This chapter can be downloaded from the BLS Web site at [www.bls.gov/opub/hom/homch14.htm](http://www.bls.gov/opub/hom/homch14.htm).

### Calculating Index Changes

Each PPI measures price changes from a reference period that equals 100.0. An increase of 5.5 percent from the reference period in the Final Demand Goods Price Index, for example, is shown as 105.5. This change also can be expressed in dollars, as follows: prices received by domestic producers of a sample of final demand goods have risen from \$100 in November 2009 to \$105.50. Likewise, a current index of 90.0 would indicate that prices received by producers of final demand goods are 10 percent lower than they were in November 2009.

Movements of price indexes from one month to another are usually expressed as percent changes, rather than as changes in index points. Index point changes are affected by the level of the index in relation to its base period, whereas percent changes are not. The following example shows the computation of index point and percent changes.

#### *Index point change*

Final Demand Goods Price Index	107.5
Less previous index	104.0
Equals index point change	3.5

#### *Index percent change*

Index point change	3.5
Divided by the previous index	104.0
Equals	0.034
Result multiplied by 100	0.034 x 100

## Seasonally Adjusted and Unadjusted Data

Because price data are used for different purposes by different groups, BLS publishes seasonally adjusted and unadjusted changes each month. Seasonally adjusted data are preferred for analyzing general price trends in the economy because these data eliminate the effect of changes that normally occur at about the same time, and in about the same magnitude, every year—such as price movements resulting from normal weather patterns, regular production and marketing cycles, model changeovers, seasonal discounts, and holidays. For these reasons, seasonally adjusted data more clearly reveal underlying trends. Unadjusted data are of primary interest to users who need information that can be related to actual dollar values of transactions. Individuals requiring this information include marketing specialists, purchasing agents, budget and cost analysts, contract specialists, and commodity traders. It is the unadjusted data that are generally cited when escalating long-term contracts such as purchasing agreements or real estate leases. For more information, see *Price Adjustment Guide for Contracting Parties*, on the Web at: [www.bls.gov/ppi/publications/price-adjustment-guide-for-contracting-parties.htm](http://www.bls.gov/ppi/publications/price-adjustment-guide-for-contracting-parties.htm).

Seasonal adjustment is accomplished using X-13 ARIMA, a software package published by the U.S. Census Bureau. Each year, the seasonal status of most commodity indexes is reevaluated to reflect more recent price behavior. Industry net output indexes are not seasonally adjusted. For time series that exhibit seasonal pricing patterns, new seasonal factors are estimated and applied to the unadjusted data from the prior 5 years. Updated seasonally adjusted indexes replace the most recent 5 years of seasonal data.

Seasonal factors may be applied to series using either a direct or an aggregative method. Generally, commodity indexes are seasonally adjusted using direct seasonal adjustment, which produces a more complete elimination of seasonal movements than does the aggregative method. However, the direct seasonal adjustment process may not yield figures that possess additive consistency. Thus, a seasonally adjusted index for a broad category that is directly adjusted may not be logically consistent with all seasonally adjusted indexes for its components. Seasonal movements for FD-ID indexes are derived indirectly through an aggregative method that combines movements of a wide variety of subproduct class (six-digit) series.

Seasonally adjusted indexes can become problematic when previously stable and predictable price patterns abruptly change. If the new pattern persists, the seasonal adjustment method will eventually reflect it; if the pattern keeps shifting, however, seasonally adjusted data will become chronically troublesome. This problem occurs relatively infrequently for farm and food-related products, but has more often affected manufactured products such as automobiles and steel.

Since January 1988, the PPI has used Intervention Analysis Seasonal Adjustment methods to enhance the calculation of seasonal factors. With this technique, outlier values that may distort the seasonal pattern are removed from the data prior to applying the standard seasonal factor estimation procedure. For example, a possible economic

cause for large price movements for petroleum-based products might have been the COVID-19 pandemic. In this case, intervention techniques allowed for better estimates of seasonally adjusted data. On the whole, very few series have required intervention. Out of over 400 seasonally adjusted commodity series, 69 were subject to intervention in 2023.

For more information relating to seasonal adjustment methods, see “PPI and CPI Seasonal Adjustment: an Update” in the July 2010 *Monthly Labor Review*, and “PPI and CPI Seasonal Adjustment During the COVID-19 Pandemic” in the May 2022 *Monthly Labor Review*.

## Producer Price Index Data on the Internet

In 1995, the BLS began posting PPI series, news releases, and technical information to the internet. There were more than 13 million instances of PPI data being downloaded from the BLS website during 2022.

### Retrieving PPI data from the PPI Web site

PPI data can be obtained online ([www.bls.gov/ppi](http://www.bls.gov/ppi)). On this page, under the tab labeled “Featured PPI databases” links provide the following methods of data retrieval:

- **Top Picks** is a form-based application for both Industry Data and Commodity Data that allows the user to quickly obtain PPI time series data by selecting the high-level aggregate and other commonly requested time series, including the All Commodities Index and the FD-ID indexes (for example, Final Demand). Within each list, any one—or all—of the time series shown can be selected. A user can modify the date range and output options after executing the query, using the reformat button above the data output table.
- **One-Screen Data Search and Multi-Screen Data Search** are form-based query applications for both Industry Data and Commodity Data designed for users unfamiliar with the PPI coding structure. These applications guide a user through the PPI classification by listing index titles and do not require knowledge of commodity or industry codes. Data retrieved are based on a query formulated by selecting data characteristics from lists provided. Two options are available to create customized tables, depending on a user’s browser capability. The one-screen option is a JavaScript application that uses a single screen to guide a user through the available time series data. The second option is a multiple-screen, non-Java-based application. Both methods allow a user to browse the PPI coding structure and select multiple series. Users can modify the date range and output options after executing the query using the reformat button above the data output table.
- **Series Report** is a form-based application that allows users to input multiple, formatted PPI time series identifiers (commodity or industry codes) as inputs in extracting data according to a specified set of date ranges and output options. This application provides the most efficient path for users who are familiar with the format of

PPI time series identifiers. There are five alphabetic prefixes used to create unique PPI time series identifiers: WP, WD, PC, PD, and ND. Each provides the user access to a different PPI database. Adding either a “u” (not seasonally adjusted) or an “s” (seasonally adjusted) to the end of these prefixes further specifies the type of data needed.

### EXAMPLES

**For commodity and FD-ID indexes**, series identifiers combine a “wpu” prefix (not seasonally adjusted) or a “wps” prefix (seasonally adjusted) with a commodity code.

<u>Commodity code</u>	<u>Provides data for:</u>
wps141101	Passenger cars, seasonally adjusted
wpu141101	Passenger cars, not seasonally adjusted
wpufd4	Final demand, not seasonally adjusted
wpsid63	Services for intermediate demand, seasonally adjusted

**For discontinued commodity indexes**, series identifiers combine a “wdu” prefix (not seasonally adjusted) or a “wds” prefix (seasonally adjusted) with a commodity code.

<u>Commodity code</u>	<u>Provides data for:</u>
wds019	Other farm products, seasonally adjusted
wdu0635	Preparations, ethical (prescription), not seasonally adjusted
wdusi138011	Stainless steel mill products, not seasonally adjusted

**Current price indexes grouped by industry according to NAICS** have series identifiers that begin with the prefix “pcu.” After the prefix, there are 12 digits (the 6-digit industry code is listed twice) followed by up to 7 alphanumeric characters identifying product detail. Dashes are used as placeholders for higher-level industry group codes.

<u>Industry-product code, current NAICS series</u>	<u>Provides data for:</u>
pcu325---325---	Chemical manufacturing
pcu336110336110	Automobile and light duty motor vehicle manufacturing
pcu621111621111411	Offices of physicians, one- and two-physician practices and single-specialty group practices, general/family practice

**Discontinued industry-product codes based on SIC** combine a “pdu” prefix and “#” between the fourth and fifth characters of the product code. Series identifiers for the discontinued dataset use underscores as placeholders to complete a reference to an SIC industry group code of fewer than four digits. (All PPI industry-based indexes organized by SIC were discontinued with the introduction of NAICS in 2004.)

*Industry-product code,  
discontinued SIC series*

pdu28\_#  
pdu331\_#  
  
pdu3711#111

*Provides data for:*

Chemicals and allied products  
Blast furnaces, steel works,  
and rolling and finishing mills  
Passenger cars

**Price indexes for discontinued series grouped by industry according to NAICS** have identifiers that begin with the prefix “ndu”. After the prefix, there are 12 numeric digits (the 6-digit industry code is listed twice), and up to 7 additional alphanumeric characters that identify product detail. Dashes are used as placeholders for higher-level group codes.

*Industry-product code,  
discontinued NAICS series*

ndu212231212231  
ndu2122312122312  
ndu212231212231214

*Provides data for*

Lead and zinc ore mining  
Lead, zinc concentrates  
Lead concentrates

- **Text Files** are best suited for users requiring access to either a large volume of time series data or other PPI-related documentation, such as seasonal factor tables and relative importance tables. The text files can be accessed at [download.bls.gov/](http://download.bls.gov/) or directly from links on the “PPI Databases” page or the PPI homepage. Data and documentation available for download include the following:

Industry Data	<u>Directory:</u> <a href="http://pub.time.series/pc">/pub/time.series/pc</a>
Industry Data - Discontinued (NAICS basis)	<a href="http://pub.time.series/nd">/pub/time.series/nd</a>
(SIC basis)	<a href="http://pub.time.series/pd">/pub/time.series/pd</a>
Commodity Data (incl. FD-ID)	<a href="http://pub.time.series/wp">/pub/time.series/wp</a>
Commodity Data – Discontinued	<a href="http://pub.time.series/wd">/pub/time.series/wd</a>
Special requests	<a href="http://pub.special.requests/ppi">/pub/special.requests/ppi</a>

### Additional information

The PPI homepage ([www.bls.gov/ppi](http://www.bls.gov/ppi)) contains additional information regarding PPI data and methodology. The “PPI Publications” section of the homepage provides PPI news releases, both current and archived, as well as general PPI information. The “PPI Tables” section provides relative importance and seasonal factor tables. The remaining sections offer special notices and publications pertaining to PPI methodology and applications.

For questions or comments regarding PPI data classification, methodology, or data availability on the Internet, call or e-mail the Section of Index Analysis and Public Information at (202) 691-7705 or [ppi-info@bls.gov](mailto:ppi-info@bls.gov). If you are deaf, hard of hearing, or have a speech disability, please dial 7-1-1 to access telecommunications relay services.

**Table 1. Producer price index percentage changes and weights for Final Demand-Intermediate Demand groupings, seasonally adjusted**  
[January 2024]

Grouping	Commodity code		Relative Importance Dec. 2023 <sup>1</sup>	Unadjusted 12-month percent change <sup>2</sup> Jan. 2023 to Jan. 2024 <sup>P</sup>	Seasonally adjusted 1-month percent change <sup>2</sup>				
	Group code	Item code			Aug. to Sept.	Sept. to Oct. <sup>P</sup>	Oct. to Nov. <sup>P</sup>	Nov. to Dec. <sup>P</sup>	Dec. to Jan. <sup>P</sup>
<b>Final Demand</b>									
Final demand.....	FD	4	100.000	0.9	0.2	-0.4	0.1	-0.1	0.3
Final demand goods.....	FD	41	30.099	-1.7	0.9	-1.3	-0.1	-0.3	-0.2
Final demand foods.....	FD	411	5.587	-3.6	0.4	0.2	0.7	-0.7	-0.3
Finished consumer foods <sup>3</sup> .....	FD	4111	4.272	-2.3	0.4	0.3	0.8	-0.6	0.4
Finished consumer foods, crude.....	FD	41113	0.351	-23.5	-4.0	-2.8	19.4	-6.3	7.9
Finished consumer foods, processed.....	FD	41112	3.921	0.4	0.7	0.6	-0.7	0.0	-0.3
Government purchased foods.....	FD	4112	0.405	-0.4	1.1	1.1	-0.1	-0.6	-1.3
Foods for export.....	FD	4113	0.910	-10.7	0.0	-0.6	0.7	-1.3	-2.9
Final demand energy.....	FD	412	5.515	-9.8	3.2	-6.5	-1.8	-1.0	-1.7
Finished consumer energy goods <sup>3</sup> .....	FD	4121	4.287	-7.8	3.2	-7.2	-1.4	0.4	-1.7
Government purchased energy.....	FD	4122	0.837	-16.8	2.8	-4.6	-2.8	-5.0	-1.7
Energy for export.....	FD	4123	0.391	-15.0	3.6	-1.9	-4.0	-7.1	-0.9
Final demand goods less foods and energy.....	FD	413	18.996	1.6	0.3	0.1	0.1	0.1	0.3
Finished goods less foods and energy <sup>3</sup> .....	FD	4131	10.931	2.4	0.1	0.1	0.2	0.0	0.4
Finished consumer goods less foods and energy.....	FD	41311	5.809	2.1	0.1	0.1	0.2	0.1	0.2
Nondurable consumer goods less foods and energy.....	FD	413111	3.519	3.0	0.1	0.2	0.2	0.1	0.3
Durable consumer goods.....	FD	413112	2.290	0.8	0.2	-0.2	0.2	0.0	0.2
Private capital equipment.....	FD	41312	5.122	2.6	0.2	0.1	0.2	0.0	0.6
Private capital equipment for manufacturing industries.....	FD	413121	1.254	3.6	0.1	0.1	0.2	0.2	0.8
Private capital equipment for nonmanufacturing industries.....	FD	413122	3.868	2.4	0.2	0.1	0.2	0.0	0.5
Government purchased goods, excluding foods and energy.....	FD	4132	1.959	1.5	0.8	0.1	0.0	0.0	0.5
Government purchased goods excluding foods, energy, and capital equipment.....	FD	41321	1.146	-0.4	0.2	0.1	-0.1	0.0	0.1
Government purchased capital equipment.....	FD	41322	0.813	4.1	1.6	0.1	0.2	0.1	1.0
Goods for export, excluding foods and energy.....	FD	4133	6.106	0.2	0.3	0.0	0.1	0.1	0.0
Final demand services.....	FD	42	67.245	2.2	-0.1	0.1	0.2	-0.1	0.6
Final demand trade services <sup>4</sup> .....	FD	423	19.337	-0.2	-1.1	0.0	0.4	-1.0	0.2
Trade of finished goods <sup>3</sup> .....	FD	4231	16.652	-0.7	-0.9	-0.2	0.1	-0.7	0.0
Trade of personal consumption goods.....	FD	42311	13.614	-0.4	-0.2	-0.2	-0.5	0.2	-0.3
Trade of private capital equipment.....	FD	42312	3.038	-1.9	-3.8	-0.2	2.8	-4.7	1.7
Trade of government purchased goods.....	FD	4232	0.758	2.7	-2.4	1.3	1.9	-2.8	0.9
Trade of government purchased goods, excluding capital equipment.....	FD	42321	0.478	4.2	-0.2	1.2	0.4	-0.5	-0.8
Trade of government purchased capital equipment.....	FD	42322	0.280	0.2	-6.1	1.4	4.4	-6.6	3.7
Trade of exports.....	FD	4233	1.927	2.9	-2.4	1.5	2.3	-2.9	2.0
Final demand transportation and warehousing services.....	FD	422	4.925	-4.3	0.4	0.5	-0.2	-0.2	-0.4
Transportation of passengers for final demand.....	FD	4221	1.262	-2.3	-2.2	1.2	-0.5	2.3	-0.5
Transportation of private passengers.....	FD	42211	0.851	-2.3	-2.2	1.2	-0.5	2.3	-0.5
Transportation of government passengers.....	FD	42212	0.102	-2.3	-2.2	1.2	-0.5	2.2	-0.5
Transportation of passengers for export.....	FD	42213	0.309	-2.4	-2.2	1.2	-0.5	2.3	-0.5
Transportation and warehousing of goods for final demand.....	FD	4222	3.663	-4.9	1.3	0.2	-0.1	-1.0	-0.3
Transportation and warehousing of finished goods <sup>3</sup> .....	FD	42221	2.370	-5.5	1.3	0.2	-0.1	-1.1	-0.4
Transportation and warehousing of personal consumption goods.....	FD	422211	1.910	-5.3	1.3	0.2	-0.1	-1.1	-0.4
Transportation and warehousing of private capital equipment.....	FD	422212	0.460	-6.3	1.4	0.2	-0.1	-1.3	-0.5
Transportation and warehousing of government purchased goods.....	FD	42222	0.220	-4.1	1.2	0.1	-0.1	-0.9	-0.3
Transportation and warehousing of exports.....	FD	42223	1.073	-3.7	1.2	0.3	-0.2	-0.8	-0.2
Final demand services less trade, transportation, and warehousing.....	FD	421	42.982	4.1	0.3	0.0	0.1	0.3	0.8
Finished services less trade, transportation, and warehousing <sup>3</sup> .....	FD	4211	37.459	4.0	0.3	0.1	0.1	0.3	0.8
Finished consumer services less trade, transportation, and warehousing.....	FD	42111	32.980	4.2	0.3	0.1	0.1	0.3	1.0
Private capital investment services less trade, transportation, and warehousing.....	FD	42112	4.479	2.9	0.1	0.3	0.0	0.3	-0.2
Government purchased services less trade, transportation, and warehousing.....	FD	4212	2.807	3.6	0.3	-0.4	0.2	0.5	0.8
Gov. purchased services less trade, transportation, and warehousing, excl. capital investment.....	FD	42121	2.644	3.7	0.3	-0.4	0.2	0.5	0.8
Government purchased capital investment services less trade, transportation, and warehousing.....	FD	42122	0.163	1.9	-0.3	0.5	-0.7	0.5	0.1
Services for export less trade, transportation, and warehousing.....	FD	4213	2.716	5.5	0.6	-0.6	-0.1	1.0	0.8
Final demand construction.....	FD	43	2.656	-1.0	0.1	-0.3	-0.1	0.1	0.3
Construction for private capital investment.....	FD	431	1.846	-1.1	0.1	-0.3	-0.2	0.1	0.3
Construction for government.....	FD	432	0.810	-0.7	0.0	-0.2	-0.1	0.0	0.4
<b>Special Groupings of Final Demand</b>									
Final demand less exports.....	FD	49101	86.568	1.1	0.2	-0.4	0.0	-0.1	0.3
Final demand less government.....	FD	49102	92.102	1.0	0.2	-0.3	0.1	-0.1	0.3

See footnotes at end of table.

**Table 1. Producer price index percentage changes and weights for Final Demand-Intermediate Demand groupings, seasonally adjusted — Continued**  
[January 2024]

Grouping	Commodity code		Relative Importance Dec. 2023 <sup>1</sup>	Unadjusted 12-month percent change <sup>2</sup> Jan. 2023 to Jan. 2024 <sup>P</sup>	Seasonally adjusted 1-month percent change <sup>2</sup>				
	Group code	Item code			Aug. to Sept.	Sept. to Oct. <sup>P</sup>	Oct. to Nov. <sup>P</sup>	Nov. to Dec. <sup>P</sup>	Dec. to Jan. <sup>P</sup>
Final demand less foods, food and nonalcoholic beverages for immediate consumption, and energy <sup>5</sup> .....	FD	49103	88.469	1.9	0.0	0.0	0.1	-0.1	0.5
Final demand less foods and energy <sup>5</sup> .....	FD	49104	88.898	2.0	0.0	0.0	0.1	-0.1	0.5
Final demand less foods and food and nonalcoholic beverages for immediate consumption <sup>5</sup> .....	FD	49105	93.984	1.1	0.2	-0.4	0.0	-0.1	0.4
Final demand less foods <sup>5</sup> .....	FD	49106	94.413	1.2	0.2	-0.4	0.0	-0.1	0.4
Final demand less energy.....	FD	49107	94.485	1.6	0.0	0.1	0.2	-0.1	0.5
Final demand less trade services.....	FD	49108	80.663	1.2	0.5	-0.4	0.0	0.1	0.3
Final demand less distributive services <sup>6</sup> .....	FD	49109	77.000	1.5	0.5	-0.5	0.0	0.1	0.4
Final demand goods less energy.....	FD	49111	24.583	0.3	0.3	0.1	0.3	-0.1	0.2
Final demand goods less foods.....	FD	49112	24.511	-1.2	1.0	-1.6	-0.3	-0.2	-0.2
Final demand services less trade services.....	FD	49113	47.907	3.2	0.3	0.1	0.1	0.3	0.7
Final demand distributive services <sup>6</sup> .....	FD	49114	23.000	-1.0	-0.7	0.0	0.3	-1.0	0.2
Final demand goods plus final demand distributive services <sup>6</sup> .....	FD	49115	53.098	-1.4	0.2	-0.7	0.1	-0.6	0.0
Final demand less foods, energy, and trade services <sup>5</sup> .....	FD	49116	69.561	2.6	0.3	0.1	0.1	0.2	0.6
Private and government purchased capital equipment.....	FD	49117	5.935	2.9	0.4	0.1	0.2	0.0	0.6
Private and government purchased capital investment services.....	FD	49118	8.420	0.5	-1.5	0.2	1.1	-1.8	0.6
Total private and government purchased capital investment.....	FD	49119	14.355	1.1	-0.6	0.1	0.6	-0.9	0.6
Total finished <sup>3</sup> .....	FD	49201	78.668	1.2	0.2	-0.4	0.0	0.0	0.4
Total finished less foods, food and nonalcoholic beverages for immediate consumption, and energy <sup>3, 5</sup> .....	FD	49202	69.684	2.1	0.0	0.0	0.1	0.0	0.5
Total finished less foods and energy <sup>3, 5</sup> .....	FD	49203	70.109	2.1	0.0	0.0	0.1	0.0	0.5
Total finished less foods and food and nonalcoholic beverages for immediate consumption <sup>3, 5</sup> .....	FD	49204	73.971	1.4	0.2	-0.5	0.0	0.0	0.4
Total finished less foods <sup>3, 5</sup> .....	FD	49205	74.396	1.4	0.2	-0.5	0.0	0.0	0.4
Total finished less energy <sup>3</sup> .....	FD	49206	74.381	1.8	0.0	0.0	0.1	-0.1	0.5
Finished goods <sup>3</sup> .....	FD	49207	19.490	-1.1	0.9	-1.7	-0.1	0.0	-0.1
Finished goods less energy <sup>3</sup> .....	FD	49208	15.203	1.0	0.2	0.2	0.4	-0.1	0.4
Finished goods, excluding foods <sup>3, 5</sup> .....	FD	49209	15.218	-0.7	1.1	-2.2	-0.3	0.1	-0.2
Finished services <sup>3</sup> .....	FD	49210	57.332	2.1	0.0	0.0	0.1	-0.1	0.5
Private capital investment services.....	FD	49211	7.977	0.5	-1.4	0.1	1.1	-1.7	0.5
Finished distributive services <sup>3, 6</sup> .....	FD	49212	19.022	-1.3	-0.6	-0.2	0.1	-0.8	0.0
Finished services less trade services <sup>3</sup> .....	FD	49213	40.680	3.3	0.3	0.1	0.1	0.2	0.7
Finished services less distributive services <sup>3, 6</sup> .....	FD	49214	38.310	3.9	0.3	0.1	0.1	0.3	0.8
Total private capital investment (goods, services, and construction).....	FD	49215	14.945	1.0	-0.7	0.1	0.6	-0.9	0.5
Finished goods plus finished distributive services <sup>3, 6</sup> .....	FD	49216	38.512	-1.2	0.2	-1.0	0.0	-0.4	-0.1
Total exports.....	FD	49301	13.432	-0.1	0.1	0.0	0.2	-0.5	0.2
Goods for export.....	FD	49302	7.407	-2.2	0.4	-0.2	-0.1	-0.4	-0.4
Services for export.....	FD	49303	6.025	2.5	-0.4	0.3	0.6	-0.5	0.9
Total government purchases.....	FD	49401	7.898	-0.5	0.5	-0.5	-0.1	-0.7	0.2
Government purchased goods.....	FD	49402	3.201	-4.2	1.4	-1.2	-0.8	-1.4	-0.3
Government purchased services.....	FD	49403	3.887	2.8	-0.3	0.0	0.5	-0.2	0.7
Total government purchased capital investment (goods, services, construction).....	FD	49404	2.066	1.5	-0.2	0.2	0.6	-0.9	1.0
Government purchases, defense.....	FD	49405	2.345	-0.7	0.8	-0.3	-0.2	-1.5	0.4
Government purchases, non-defense.....	FD	49406	5.553	-0.4	0.3	-0.6	-0.1	-0.3	0.2
Personal consumption.....	FD	49501	63.723	1.3	0.4	-0.5	-0.1	0.2	0.3
Personal consumption goods (finished consumer goods).....	FD	49502	14.368	-2.3	1.2	-2.3	-0.1	0.0	-0.3
Personal consumption goods less energy.....	FD	49503	10.081	0.2	0.2	0.2	0.4	-0.2	0.3
Personal consumption goods less foods.....	FD	49504	10.096	-2.4	1.6	-3.3	-0.5	0.2	-0.6
Personal consumption nondurable goods less foods.....	FD	49508	7.806	-3.3	1.9	-4.2	-0.7	0.3	-0.8
Personal consumption services.....	FD	49505	49.355	2.4	0.2	0.0	-0.1	0.2	0.5
Personal consumption less trade services.....	FD	49506	50.109	1.7	0.6	-0.6	0.0	0.2	0.5
Personal consumption less distributive services <sup>6</sup> .....	FD	49507	48.199	2.0	0.6	-0.6	0.0	0.2	0.5
Personal consumption less foods and energy.....	FD	49510	55.164	2.4	0.2	0.0	0.0	0.2	0.5
Personal consumption less foods, energy, and trade services <sup>4</sup> .....	FD	49511	41.550	3.3	0.3	0.1	0.1	0.2	0.8
Personal consumption less foods, energy, and distributive services <sup>6</sup> .....	FD	49512	39.640	3.7	0.3	0.1	0.1	0.3	0.8
Personal consumption goods plus personal consumption distributive services <sup>6</sup> .....	FD	49509	29.892	-1.7	0.6	-1.2	-0.3	0.0	-0.3
<b>Intermediate Demand by Commodity Type</b>									
<b>Processed goods</b>									
Processed goods for intermediate demand.....	ID6	1	100.000	-3.8	0.5	-1.0	-0.5	-0.5	-0.2
Materials and components for manufacturing.....	ID6	11	43.089	-2.1	0.1	-0.1	-0.4	0.1	0.3
Materials for manufacturing.....	ID6	111	26.451	-4.4	0.0	-0.3	-0.6	0.1	0.2
Materials for food manufacturing.....	ID6	1111	4.344	-6.4	0.8	0.5	-0.6	-0.3	-1.5
Materials for nondurable manufacturing.....	ID6	1112	11.712	-7.8	0.7	0.4	-0.7	-0.6	-0.7
Materials for durable manufacturing.....	ID6	1113	10.395	0.6	-1.0	-1.4	-0.7	1.0	1.9
Components for manufacturing.....	ID6	112	16.638	1.7	0.1	0.1	0.1	0.3	0.4

See footnotes at end of table.

**Table 1. Producer price index percentage changes and weights for Final Demand-Intermediate Demand groupings, seasonally adjusted — Continued**  
[January 2024]

Grouping	Commodity code		Relative Importance Dec. 2023 <sup>1</sup>	Unadjusted 12-month percent change <sup>2</sup> Jan. 2023 to Jan. 2024 <sup>P</sup>	Seasonally adjusted 1-month percent change <sup>2</sup>				
	Group code	Item code			Aug. to Sept.	Sept. to Oct. <sup>P</sup>	Oct. to Nov. <sup>P</sup>	Nov. to Dec. <sup>P</sup>	Dec. to Jan. <sup>P</sup>
Components for nondurable manufacturing.....	ID6	1121	0.801	-1.0	-0.4	0.0	0.0	0.3	0.2
Components for durable manufacturing.....	ID6	1122	15.837	1.8	0.1	0.1	0.1	0.3	0.4
Materials and components for construction.....	ID6	12	10.771	1.4	0.3	0.0	0.1	0.2	0.3
Materials for construction.....	ID6	121	4.730	1.7	0.4	-0.4	0.0	0.0	0.3
Components for construction.....	ID6	122	6.041	1.2	0.2	0.4	0.2	0.3	0.2
Processed fuels and lubricants for intermediate demand.....	ID6	13	18.764	-12.6	2.1	-4.3	-1.8	-2.8	-1.7
Processed fuels and lubricants to manufacturing industries.....	ID6	131	4.777	-10.4	1.3	0.0	-0.8	-1.9	-2.2
Processed fuels and lubricants to nonmanufacturing industries.....	ID6	132	13.987	-13.3	2.3	-5.7	-2.2	-3.0	-1.5
Containers for intermediate demand.....	ID6	14	3.103	-3.2	-0.3	-0.2	-0.3	0.0	-0.2
Supplies for intermediate demand.....	ID6	15	24.273	-1.4	0.1	-0.1	-0.1	-0.1	-0.2
Supplies to manufacturing industries.....	ID6	151	3.228	-0.2	0.0	0.0	0.0	0.1	0.5
Supplies to nonmanufacturing industries.....	ID6	152	21.045	-1.5	0.2	-0.1	-0.1	-0.1	-0.3
Supplies to nonmanufacturing industries, feeds.....	ID6	1521	2.214	-11.0	0.2	-2.0	0.1	-1.7	-2.4
Supplies to nonmanufacturing industries, other than feeds.....	ID6	1522	18.831	-0.3	0.2	0.1	-0.2	0.0	0.0
<b>Unprocessed goods</b>									
Unprocessed goods for intermediate demand.....	ID6	2	100.000	-15.0	2.9	-1.6	-2.1	-4.4	0.1
Unprocessed foodstuffs and feedstuffs.....	ID6	21	38.165	-14.5	1.2	-2.1	-0.4	-3.3	-2.2
Unprocessed nonfood materials.....	ID6	22	61.836	-15.3	4.0	-1.4	-3.1	-5.1	1.6
Unprocessed nonfood materials except fuel.....	ID6	221	50.586	-4.2	5.3	-1.9	-5.0	-5.5	2.2
Unprocessed nonfood materials except fuel to manufacturing industries.....	ID6	2211	47.969	-4.7	5.6	-2.0	-5.3	-5.8	2.2
Unprocessed nonfood materials except fuel to nonmanufacturing industries.....	ID6	2212	2.617	-8.0	0.4	0.4	0.5	0.4	3.2
Unprocessed fuel.....	ID6	222	11.250	-46.2	-2.9	1.6	7.6	-3.1	-1.5
Unprocessed fuel to manufacturing industries.....	ID6	2221	1.006	-14.9	-3.3	2.5	3.7	-1.0	0.0
Unprocessed fuel to nonmanufacturing industries.....	ID6	2222	10.244	-48.2	-2.8	1.5	8.0	-3.3	-1.7
<b>Services</b>									
Services for intermediate demand.....	ID6	3	100.000	3.1	0.3	-0.1	0.5	0.4	0.5
Trade services for intermediate demand <sup>4</sup> .....	ID6	33	18.328	3.7	-0.4	1.4	1.3	-0.3	0.1
Trade services for manufacturing industries.....	ID6	331	9.049	3.9	-0.7	1.4	2.1	-0.5	1.1
Trade services for nonmanufacturing industries.....	ID6	332	9.279	3.5	-0.1	1.5	0.7	0.0	-0.8
Transportation and warehousing services for intermediate demand.....	ID6	32	13.925	-0.5	0.8	0.4	-0.1	0.8	-0.1
Transportation of passengers for intermediate demand.....	ID6	321	1.033	-2.3	-2.2	1.2	-0.5	2.2	-0.5
Transportation of passengers for manufacturing industries.....	ID6	3211	0.123	-2.3	-2.2	1.2	-0.5	2.3	-0.5
Transportation of passengers for nonmanufacturing industries.....	ID6	3212	0.910	-2.3	-2.2	1.2	-0.5	2.2	-0.5
Transportation and warehousing of goods for intermediate demand.....	ID6	322	12.892	-0.3	1.1	0.4	-0.1	0.6	-0.1
Transportation and warehousing of goods for manufacturing industries.....	ID6	3221	2.732	-3.1	0.9	0.2	0.1	-0.7	-0.1
Transportation and warehousing of goods for nonmanufacturing industries.....	ID6	3222	10.160	0.4	1.1	0.4	-0.2	1.0	-0.1
Services less trade, transportation, and warehousing for intermediate demand.....	ID6	31	67.747	3.6	0.4	-0.5	0.4	0.5	0.7
Services less trade, transportation, and warehousing for manufacturing industries.....	ID6	311	2.130	4.6	0.2	0.3	0.1	0.4	1.6
Services less trade, transportation, and warehousing for nonmanufacturing industries.....	ID6	312	65.617	3.6	0.4	-0.6	0.4	0.5	0.7
<b>Construction</b>									
Construction for intermediate demand.....	ID6	4	100.000	2.9	0.0	0.1	0.0	0.0	0.4
<b>Special Groupings of Intermediate Demand by Commodity Type</b>									
Processed materials less foods and feeds.....	ID6	9111	91.153	-3.5	0.5	-1.1	-0.6	-0.5	-0.1
Processed foods and feeds.....	ID6	9112	8.847	-6.5	0.7	-0.2	-0.5	-0.6	-1.5
Processed energy goods.....	ID6	9113	18.764	-12.6	2.1	-4.3	-1.8	-2.8	-1.7
Processed materials less energy.....	ID6	9118	81.236	-1.5	0.1	-0.1	-0.2	0.1	0.1
Processed materials less foods and energy.....	ID6	9115	72.389	-0.8	0.0	-0.1	-0.2	0.2	0.3
Intermediate distributive services <sup>7</sup> .....	ID6	9116	31.220	2.0	0.2	1.0	0.7	0.1	0.1
Processed goods plus intermediate distributive services.....	ID6	9117	-	-2.0	0.4	-0.4	-0.2	-0.3	-0.1
Unprocessed materials less agricultural products.....	ID6	9211	56.663	-13.7	4.8	-1.2	-3.1	-5.5	2.2
Unprocessed energy materials <sup>8</sup> .....	ID6	9212	36.891	-19.6	6.8	-2.1	-5.4	-8.6	3.8
Unprocessed materials less energy.....	ID6	9213	63.109	-11.6	0.6	-1.3	0.0	-1.8	-2.0
Unprocessed nonfood materials less energy <sup>9</sup> .....	ID6	9216	24.944	-6.9	-0.4	0.0	0.8	0.6	-1.7
<b>Intermediate Demand by Production Flow</b>									
<b>Stage 4 Intermediate Demand</b>									
Stage 4 intermediate demand.....	ID5	4	100.000	1.5	0.3	-0.3	0.2	0.2	0.4
Inputs to stage 4 goods producers.....	ID5	41	29.665	-0.1	-0.1	0.0	0.3	-0.2	0.2
Goods.....	ID5	411	21.643	-1.6	-0.1	-0.2	-0.1	-0.1	0.1

See footnotes at end of table.



**Table 1. Producer price index percentage changes and weights for Final Demand-Intermediate Demand groupings, seasonally adjusted — Continued**  
[January 2024]

Grouping	Commodity code		Relative Importance Dec. 2023 <sup>1</sup>	Unadjusted 12-month percent change <sup>2</sup> Jan. 2023 to Jan. 2024 <sup>P</sup>	Seasonally adjusted 1-month percent change <sup>2</sup>				
	Group code	Item code			Aug. to Sept.	Sept. to Oct. <sup>P</sup>	Oct. to Nov. <sup>P</sup>	Nov. to Dec. <sup>P</sup>	Dec. to Jan. <sup>P</sup>
Foods.....	ID5	4111	2.941	-10.5	-0.8	-1.4	0.5	-0.5	-1.9
Energy.....	ID5	4112	0.170	-17.2	4.8	4.2	-6.7	-5.5	-1.9
Goods excluding foods and energy.....	ID5	4113	18.532	0.2	0.0	-0.1	-0.2	0.0	0.4
Services.....	ID5	412	8.022	3.9	-0.2	0.8	1.5	-0.3	0.5
Trade services.....	ID5	4123	6.017	4.5	-0.4	0.9	1.9	-0.4	0.6
Transportation and warehousing services.....	ID5	4122	0.492	-2.4	0.5	0.8	0.2	-0.1	0.0
Transportation of passengers.....	ID5	41221	0.076	-2.4	-2.2	1.2	-0.5	2.3	-0.5
Transportation and warehousing of goods.....	ID5	41222	0.416	-2.4	1.0	0.7	0.3	-0.6	0.1
Services less trade, transportation, and warehousing.....	ID5	4121	1.513	3.6	0.7	0.2	0.3	0.3	0.3
Inputs to stage 4 services producers.....	ID5	42	55.644	2.6	0.4	-0.5	0.2	0.4	0.6
Goods.....	ID5	421	13.716	-1.8	0.5	-0.4	0.0	0.0	-0.8
Foods.....	ID5	4211	2.241	-3.8	1.2	0.3	-1.1	-0.7	-1.1
Energy.....	ID5	4212	4.062	-4.8	0.9	-1.5	0.4	-0.1	-2.3
Goods excluding foods and energy.....	ID5	4213	7.413	0.6	0.1	0.0	0.1	0.2	0.2
Services.....	ID5	422	41.875	4.1	0.3	-0.5	0.3	0.5	1.0
Trade services.....	ID5	4223	4.149	3.3	-0.4	1.2	0.9	-0.9	0.9
Transportation and warehousing services.....	ID5	4222	3.724	0.4	0.7	0.3	-0.2	0.7	-0.1
Transportation of passengers.....	ID5	42221	0.480	-2.3	-2.2	1.2	-0.5	2.3	-0.5
Transportation and warehousing of goods.....	ID5	42222	3.244	0.8	1.1	0.2	-0.2	0.5	0.0
Services less trade, transportation, and warehousing.....	ID5	4221	34.002	4.6	0.4	-0.8	0.2	0.6	1.1
Construction.....	ID5	423	0.053	2.9	0.0	0.1	0.0	0.0	0.4
Inputs to stage 4 construction producers.....	ID5	43	14.690	0.7	0.6	-0.5	0.1	0.2	0.0
Goods.....	ID5	431	10.712	0.6	0.7	-1.0	-0.1	0.2	0.2
Energy.....	ID5	4312	0.762	-14.8	4.7	-11.1	-3.5	-1.0	-2.6
Goods excluding foods and energy.....	ID5	4313	9.950	2.0	0.4	0.0	0.2	0.3	0.4
Services.....	ID5	432	3.978	1.1	0.3	0.9	0.7	0.0	-0.4
Trade services.....	ID5	4323	1.728	2.9	-0.1	1.5	1.5	0.3	-0.3
Transportation and warehousing services.....	ID5	4322	0.661	-5.7	1.3	0.3	-0.1	-1.1	-0.4
Transportation of passengers.....	ID5	43221	0.015	-2.3	-2.2	1.2	-0.5	2.3	-0.5
Transportation and warehousing of goods.....	ID5	43222	0.646	-5.8	1.4	0.3	0.0	-1.2	-0.3
Services less trade, transportation, and warehousing.....	ID5	4321	1.589	2.1	0.3	0.5	0.0	0.1	-0.5
<b>Stage 3 Intermediate Demand</b>									
Stage 3 intermediate demand.....	ID5	3	100.000	-2.6	0.5	-0.6	-0.2	-0.4	0.0
Inputs to stage 3 goods producers.....	ID5	31	43.800	-4.9	0.4	-0.5	-0.2	-0.7	0.1
Goods.....	ID5	311	33.969	-6.4	0.5	-1.0	-0.7	-0.8	-0.1
Foods.....	ID5	3111	10.337	-15.2	1.5	-2.2	-1.6	-2.8	-2.3
Energy.....	ID5	3112	1.164	-12.5	3.5	1.1	-3.3	-3.3	0.1
Goods excluding foods and energy.....	ID5	3113	22.468	-1.6	-0.1	-0.6	-0.2	0.3	0.9
Services.....	ID5	312	9.831	0.7	-0.2	1.1	1.5	-0.3	0.8
Trade services.....	ID5	3123	5.506	2.9	-0.9	1.7	2.6	-0.2	1.6
Transportation and warehousing services.....	ID5	3122	2.865	-4.5	1.0	0.3	0.0	-0.8	-0.2
Transportation of passengers.....	ID5	31221	0.149	-2.3	-2.2	1.2	-0.5	2.3	-0.5
Transportation and warehousing of goods.....	ID5	31222	2.716	-4.6	1.2	0.2	0.0	-0.9	-0.2
Services less trade, transportation, and warehousing.....	ID5	3121	1.460	3.4	0.2	0.5	0.0	0.2	0.0
Inputs to stage 3 services producers.....	ID5	32	55.023	-0.8	0.7	-0.7	-0.2	-0.2	-0.1
Goods.....	ID5	321	9.949	-13.2	2.0	-4.2	-2.3	-4.3	-0.9
Foods.....	ID5	3211	0.088	-6.2	-0.5	0.0	0.6	-0.7	-0.6
Energy.....	ID5	3212	5.884	-20.4	3.1	-6.6	-3.7	-7.0	-1.7
Goods excluding foods and energy.....	ID5	3213	3.977	-0.3	0.3	0.0	0.0	0.0	0.3
Services.....	ID5	322	44.469	2.3	0.3	0.2	0.4	0.8	0.1
Trade services.....	ID5	3223	2.814	4.1	-0.2	1.4	0.0	0.5	-1.6
Transportation and warehousing services.....	ID5	3222	10.389	1.7	1.1	0.6	-0.2	1.6	-0.1
Transportation of passengers.....	ID5	32221	0.021	-0.1	-0.1	0.1	0.1	0.2	-0.1
Transportation and warehousing of goods.....	ID5	32222	10.368	1.7	1.1	0.6	-0.2	1.6	-0.1
Services less trade, transportation, and warehousing.....	ID5	3221	31.266	2.4	0.1	0.0	0.6	0.5	0.4
Construction.....	ID5	323	0.605	2.9	0.0	0.1	0.0	0.0	0.4
Inputs to stage 3 construction producers.....	ID5	33	1.176	1.3	0.7	-0.1	0.4	0.1	-0.3
Goods.....	ID5	331	0.568	-0.8	0.2	-0.8	0.0	0.2	0.3
Goods excluding foods and energy.....	ID5	3313	0.568	-0.8	0.2	-0.8	0.0	0.2	0.3
Services.....	ID5	332	0.608	3.4	1.2	0.6	0.7	0.0	-0.9
Trade services.....	ID5	3323	0.561	3.5	1.2	0.6	0.8	0.0	-1.0
Transportation and warehousing services.....	ID5	3322	0.016	0.9	0.5	0.5	0.6	-0.1	0.4
Transportation and warehousing of goods.....	ID5	33222	0.016	0.9	0.5	0.5	0.6	-0.1	0.4
Services less trade, transportation, and warehousing.....	ID5	3321	0.031	2.7	0.0	0.4	-0.4	0.5	0.9
<b>Stage 2 Intermediate Demand</b>									

See footnotes at end of table.

**Table 1. Producer price index percentage changes and weights for Final Demand-Intermediate Demand groupings, seasonally adjusted — Continued**  
 [January 2024]

Grouping	Commodity code		Relative Importance Dec. 2023 <sup>1</sup>	Unadjusted 12-month percent change <sup>2</sup> Jan. 2023 to Jan. 2024 <sup>P</sup>	Seasonally adjusted 1-month percent change <sup>2</sup>				
	Group code	Item code			Aug. to Sept.	Sept. to Oct. <sup>P</sup>	Oct. to Nov. <sup>P</sup>	Nov. to Dec. <sup>P</sup>	Dec. to Jan. <sup>P</sup>
Stage 2 intermediate demand.....	ID5	2	100.000	-3.8	1.2	-0.3	-0.9	-1.4	0.5
Inputs to stage 2 goods producers.....	ID5	21	50.555	-9.0	2.4	-0.8	-1.7	-3.1	0.6
Goods.....	ID5	211	35.815	-13.0	3.4	-1.3	-2.7	-4.2	0.8
Foods.....	ID5	2111	4.080	-13.7	0.7	-1.2	0.6	-2.3	-4.6
Energy.....	ID5	2112	15.983	-19.4	6.9	-2.5	-5.4	-8.3	3.8
Goods excluding foods and energy.....	ID5	2113	15.752	-4.8	0.2	0.1	-0.3	-0.3	-0.9
Services.....	ID5	212	14.451	2.7	-0.1	0.6	0.7	-0.2	0.3
Trade services.....	ID5	2123	5.731	3.0	-0.5	1.0	1.6	-0.9	0.0
Transportation and warehousing services.....	ID5	2122	4.784	1.5	0.2	0.3	0.2	0.3	0.3
Transportation of passengers.....	ID5	21221	0.180	-2.2	-2.1	1.2	-0.5	2.2	-0.4
Transportation and warehousing of goods.....	ID5	21222	4.604	1.7	0.3	0.3	0.3	0.3	0.4
Services less trade, transportation, and warehousing.....	ID5	2121	3.936	3.8	0.0	0.2	0.0	0.3	0.7
Construction.....	ID5	213	0.289	2.9	0.0	0.1	0.0	0.0	0.4
Inputs to stage 2 services producers.....	ID5	22	49.447	2.1	-0.1	0.2	0.0	0.4	0.3
Goods.....	ID5	221	5.262	-2.8	0.3	-0.3	-0.3	-0.3	-0.4
Foods.....	ID5	2211	0.051	-12.9	0.1	-0.7	1.7	-0.5	-1.1
Energy.....	ID5	2212	0.322	-19.0	2.2	-7.6	-2.5	-2.9	-0.3
Goods excluding foods and energy.....	ID5	2213	4.889	-1.4	0.2	0.3	-0.2	-0.1	-0.4
Services.....	ID5	222	43.220	2.7	-0.1	0.2	0.0	0.5	0.4
Trade services.....	ID5	2223	2.383	1.3	-1.0	5.3	-1.3	1.4	-3.3
Transportation and warehousing services.....	ID5	2222	2.817	-2.8	1.5	0.9	-0.2	4.5	-0.5
Transportation of passengers.....	ID5	22221	0.417	-2.3	-2.2	1.2	-0.5	2.3	-0.5
Transportation and warehousing of goods.....	ID5	22222	2.400	-2.9	2.2	0.8	-0.1	4.8	-0.5
Services less trade, transportation, and warehousing.....	ID5	2221	38.020	3.3	-0.2	-0.1	0.1	0.2	0.7
Construction.....	ID5	223	0.965	2.9	0.0	0.1	0.0	0.0	0.4
<b>Stage 1 Intermediate Demand</b>									
Stage 1 intermediate demand.....	ID5	1	100.000	-0.7	0.3	-0.4	-0.1	-0.2	0.2
Inputs to stage 1 goods producers.....	ID5	11	32.376	-4.1	-0.2	0.2	-0.3	-0.5	0.1
Goods.....	ID5	111	23.318	-6.5	0.0	-0.2	-1.1	-0.5	-0.4
Foods.....	ID5	1111	2.758	-20.5	-2.4	-1.6	-1.0	-1.3	-3.7
Energy.....	ID5	1112	3.446	-13.8	2.1	-0.4	-3.0	-3.3	-0.6
Goods excluding foods and energy.....	ID5	1113	17.114	-2.2	-0.1	0.1	-0.7	0.2	0.1
Services.....	ID5	112	9.057	2.6	-0.5	1.3	1.6	-0.4	1.6
Trade services.....	ID5	1123	5.505	2.9	-1.1	2.4	2.4	-0.9	2.6
Transportation and warehousing services.....	ID5	1122	0.603	0.5	-0.3	-0.5	0.7	0.3	-0.5
Transportation of passengers.....	ID5	11221	0.103	-2.4	-2.2	1.2	-0.5	2.3	-0.5
Transportation and warehousing of goods.....	ID5	11222	0.500	1.2	0.1	-0.8	0.9	-0.1	-0.6
Services less trade, transportation, and warehousing.....	ID5	1121	2.949	2.6	0.4	-0.4	0.3	0.3	0.2
Construction.....	ID5	113	0.001	2.9	0.0	0.1	0.0	0.0	0.4
Inputs to stage 1 services producers.....	ID5	12	54.733	1.3	0.4	-0.8	0.1	0.0	0.3
Goods.....	ID5	121	16.086	-4.2	0.6	-1.7	-0.6	-1.0	-0.4
Foods.....	ID5	1211	0.064	-42.9	-0.9	-2.7	0.6	0.0	-0.2
Energy.....	ID5	1212	5.040	-13.7	1.4	-5.1	-1.9	-3.6	-1.9
Goods excluding foods and energy.....	ID5	1213	10.982	1.2	0.2	0.2	0.0	0.2	0.3
Services.....	ID5	122	38.644	3.7	0.3	-0.5	0.4	0.4	0.7
Trade services.....	ID5	1223	3.829	4.5	-0.3	1.5	0.5	0.7	-1.2
Transportation and warehousing services.....	ID5	1222	4.412	-0.5	-0.1	0.6	-0.3	0.6	-0.2
Transportation of passengers.....	ID5	12221	1.343	-2.3	-2.2	1.2	-0.5	2.3	-0.5
Transportation and warehousing of goods.....	ID5	12222	3.069	0.3	0.8	0.3	-0.2	-0.1	0.0
Services less trade, transportation, and warehousing.....	ID5	1221	30.403	4.3	0.5	-0.9	0.5	0.3	1.0
Construction.....	ID5	123	0.003	2.9	0.0	0.1	0.0	0.0	0.4
Inputs to stage 1 construction producers.....	ID5	13	12.891	-0.1	0.6	-0.3	0.0	-0.4	-0.1
Goods.....	ID5	131	9.205	-0.6	0.4	-0.7	-0.2	-0.5	0.3
Energy.....	ID5	1312	0.754	-24.4	1.2	-7.9	-4.2	-8.1	-1.4
Goods excluding foods and energy.....	ID5	1313	8.451	2.2	0.3	0.1	0.2	0.3	0.4
Services.....	ID5	132	3.686	1.3	1.1	0.6	0.7	-0.2	-0.9
Trade services.....	ID5	1323	2.807	3.7	1.0	0.8	0.9	0.1	-1.0
Transportation and warehousing services.....	ID5	1322	0.783	-6.9	1.5	0.1	-0.1	-1.4	-0.6
Transportation and warehousing of goods.....	ID5	13222	0.783	-6.9	1.5	0.1	-0.1	-1.4	-0.6
Services less trade, transportation, and warehousing.....	ID5	1321	0.096	3.6	0.9	-0.2	0.1	0.4	1.1
<b>Special Groupings of Intermediate Demand by Production Flow</b>									
Total goods inputs to stage 4 intermediate demand.....	ID5	9411	46.071	-1.1	0.3	-0.5	-0.1	0.0	-0.2
Total services inputs to stage 4 intermediate demand.....	ID5	9412	53.875	3.8	0.3	-0.2	0.5	0.3	0.8
Total construction inputs to stage 4 intermediate demand.....	ID5	9413	0.053	2.9	0.0	0.1	0.0	0.0	0.4
Total foods inputs to stage 4 intermediate demand.....	ID5	9414	5.182	-7.7	0.1	-0.7	-0.2	-0.6	-1.5

See footnotes at end of table.

**Table 1. Producer price index percentage changes and weights for Final Demand-Intermediate Demand groupings, seasonally adjusted — Continued**  
 [January 2024]

Grouping	Commodity code		Relative Importance Dec. 2023 <sup>1</sup>	Unadjusted 12-month percent change <sup>2</sup> Jan. 2023 to Jan. 2024 <sup>p</sup>	Seasonally adjusted 1-month percent change <sup>2</sup>				
	Group code	Item code			Aug. to Sept.	Sept. to Oct. <sup>p</sup>	Oct. to Nov. <sup>p</sup>	Nov. to Dec. <sup>p</sup>	Dec. to Jan. <sup>p</sup>
Total energy goods inputs to stage 4 intermediate demand.....	ID5	9415	4.994	-6.9	1.7	-3.1	-0.6	-0.5	-2.3
Total goods less foods and energy inputs to stage 4 intermediate demand. ....	ID5	9416	35.895	0.8	0.1	0.0	0.0	0.1	0.3
Total goods inputs to stage 3 intermediate demand.....	ID5	9311	44.486	-7.9	0.9	-1.8	-1.1	-1.6	-0.3
Total services inputs to stage 3 intermediate demand.....	ID5	9312	54.908	2.0	0.3	0.4	0.6	0.6	0.2
Total construction inputs to stage 3 intermediate demand.....	ID5	9313	0.605	2.9	0.0	0.1	0.0	0.0	0.4
Total foods inputs to stage 3 intermediate demand.....	ID5	9314	10.425	-15.2	1.5	-2.2	-1.5	-2.8	-2.2
Total energy goods inputs to stage 3 intermediate demand.....	ID5	9315	7.048	-19.2	3.1	-5.4	-3.6	-6.4	-1.4
Total goods less foods and energy inputs to stage 3 intermediate demand. ....	ID5	9316	27.013	-1.4	-0.1	-0.5	-0.1	0.3	0.8
Total goods inputs to stage 2 intermediate demand.....	ID5	9211	41.077	-11.9	3.0	-1.2	-2.4	-3.8	0.6
Total services inputs to stage 2 intermediate demand.....	ID5	9212	57.671	2.7	-0.1	0.3	0.2	0.4	0.4
Total construction inputs to stage 2 intermediate demand.....	ID5	9213	1.254	2.9	0.0	0.1	0.0	0.0	0.4
Total foods inputs to stage 2 intermediate demand.....	ID5	9214	4.131	-13.7	0.7	-1.2	0.6	-2.2	-4.5
Total energy goods inputs to stage 2 intermediate demand.....	ID5	9215	16.305	-19.4	6.8	-2.6	-5.4	-8.2	3.7
Total goods less foods and energy inputs to stage 2 intermediate demand. ....	ID5	9216	20.641	-4.0	0.2	0.2	-0.3	-0.2	-0.8
Total goods inputs to stage 1 intermediate demand.....	ID5	9111	48.609	-4.7	0.3	-0.8	-0.7	-0.7	-0.3
Total services inputs to stage 1 intermediate demand.....	ID5	9112	51.387	3.3	0.2	-0.1	0.6	0.2	0.7
Total construction inputs to stage 1 intermediate demand.....	ID5	9117	0.004	2.9	0.0	0.1	0.0	0.0	0.4
Total foods inputs to stage 1 intermediate demand.....	ID5	9114	2.822	-21.2	-2.3	-1.7	-0.9	-1.3	-3.7
Total energy goods inputs to stage 1 intermediate demand.....	ID5	9115	9.240	-14.7	1.6	-3.7	-2.5	-3.9	-1.4
Total goods less foods and energy inputs to stage 1 intermediate demand. ....	ID5	9116	36.547	-0.2	0.1	0.1	-0.3	0.2	0.2

<sup>1</sup> Comprehensive relative importance figures are initially computed after the publication of December indexes and are recalculated after final December indexes are available. Individual items and subtotals may not add exactly to totals because of rounding differences.

<sup>2</sup> All indexes are subject to revision for 4 months after their originally scheduled publication to incorporate late reports and corrections by survey respondents. In addition, seasonally adjusted indexes are subject to change for up to 5 years due to the recalculation of seasonal factors published each January.

<sup>3</sup> PPI defines Total finished as including only the personal consumption and private capital investment portions of final demand.

<sup>4</sup> Trade indexes measure changes in margins received by wholesalers and retailers.

<sup>5</sup> The PPI definition of foods does not include food and beverages for immediate consumption. PPI defines food and beverages for immediate consumption as the service of preparing meals, snacks, and beverages to customer order for immediate on-premises and off-premises consumption.

<sup>6</sup> Distributive services include transportation, warehousing, and trade of goods.

<sup>7</sup> Includes intermediate trade, transportation, and warehousing services.

<sup>8</sup> Includes crude petroleum.

<sup>9</sup> Excludes crude petroleum.

<sup>p</sup> Preliminary

"/" Data not available.

**Table 2. Producer price index percentage changes for selected commodity groupings by Final Demand-Intermediate Demand category, seasonally adjusted**  
[January 2024]

Grouping	Commodity code		Unadjusted 12-month percent change <sup>1</sup>	Seasonally adjusted 1-month percent change <sup>1</sup>				
	Group code	Item code		Jan. 2023 to Jan. 2024 <sup>P</sup>	Aug. to Sept.	Sept. to Oct. <sup>P</sup>	Oct. to Nov. <sup>P</sup>	Nov. to Dec. <sup>P</sup>
<b>Final Demand</b>								
Final demand.....	FD	4	0.9	0.2	-0.4	0.1	-0.1	0.3
Final demand goods.....	FD	41	-1.7	0.9	-1.3	-0.1	-0.3	-0.2
Final demand foods.....	FD	411	-3.6	0.4	0.2	0.7	-0.7	-0.3
Fresh fruits and melons <sup>2</sup> .....	01	11	-0.8	0.2	-6.2	18.2	-0.6	3.7
Fresh and dry vegetables <sup>2</sup> .....	01	13	-19.6	-13.9	-1.7	11.2	-5.6	9.6
Grains.....	01	2	-32.0	-5.3	-3.0	-3.0	-1.4	-5.4
Eggs for fresh use <sup>2</sup> .....	01	7107	-49.5	8.1	-12.9	71.2	-20.5	14.6
Oilseeds.....	01	8301	-16.9	1.9	-0.9	2.2	-3.8	-9.2
Bakery products <sup>2</sup> .....	02	11	3.5	1.0	0.3	0.1	0.0	0.1
Milled rice <sup>2</sup> .....	02	13	-8.6	-2.7	-1.6	-1.4	-0.1	-1.6
Pasta products <sup>2</sup> .....	02	1402	-9.7	0.0	1.2	0.0	0.0	-1.8
Beef and veal.....	02	2101	9.7	3.2	2.3	0.4	0.4	-4.4
Pork.....	02	2104	-8.4	0.5	1.0	0.3	0.5	-4.4
Processed young chickens.....	02	2203	5.8	4.3	4.2	-3.2	3.8	1.3
Processed turkeys <sup>2</sup> .....	02	2206	-37.9	-2.5	-1.4	-1.6	-2.3	4.3
Finfish and shellfish.....	02	23	0.4	-1.5	-0.9	0.5	0.2	5.8
Dairy products <sup>2</sup> .....	02	3	-6.8	1.7	1.6	-0.6	-1.4	-1.4
Processed fruits and vegetables <sup>2</sup> .....	02	4	8.9	2.0	0.6	0.2	0.3	0.3
Confectionery end products <sup>2</sup> .....	02	55	2.4	-0.4	0.0	0.3	0.2	0.0
Soft drinks <sup>2</sup> .....	02	62	2.0	-0.8	0.3	-0.6	-1.1	3.6
Roasted coffee <sup>2</sup> .....	02	6301	6.0	0.3	-0.2	0.0	0.2	-0.3
Shortening and cooking oils <sup>2</sup> .....	02	78	-10.4	-3.9	-2.7	1.3	-1.8	-2.4
Frozen specialty food <sup>2</sup> .....	02	85	2.0	-0.2	0.0	0.2	0.0	-0.1
Final demand energy.....	FD	412	-9.8	3.2	-6.5	-1.8	-1.0	-1.7
Liquefied petroleum gas <sup>2</sup> .....	05	32	-13.0	9.7	-7.0	-5.7	-2.5	4.5
Residential electric power.....	05	41	2.5	0.8	0.3	0.5	0.5	-1.2
Residential natural gas.....	05	51	-17.7	0.1	-0.5	1.8	0.4	1.0
Gasoline.....	05	71	-13.1	6.1	-15.0	-4.0	1.6	-3.6
Home heating oil and distillates.....	05	7302	-19.5	8.8	-13.2	-5.0	-6.1	1.8
No. 2 diesel fuel.....	05	7303	-27.0	0.8	-11.8	-3.7	-9.3	-0.4
Final demand goods less foods and energy.....	FD	413	1.6	0.3	0.1	0.1	0.1	0.3
Alcoholic beverages.....	02	61	1.3	0.3	0.2	0.1	0.1	0.2
Pet food <sup>2</sup> .....	02	9402	5.4	0.0	0.0	0.0	0.0	-0.3
Women's, girls', and infants' apparel <sup>2</sup> .....	03	8106	0.0	0.0	-1.0	0.0	0.0	2.2
Men's and boys' apparel <sup>2</sup> .....	03	8107	2.4	0.0	-0.4	0.0	0.0	1.0
Textile housefurnishings <sup>2</sup> .....	03	82	-0.1	0.0	0.0	0.0	0.0	0.0
Footwear <sup>2</sup> .....	04	3	1.5	0.0	0.0	0.1	0.0	0.2
Industrial chemicals.....	06	1	-13.4	1.2	1.9	-2.1	-1.9	-3.7
Pharmaceutical preparations.....	06	38	2.5	0.2	0.3	0.1	0.2	0.2
Soaps and detergents <sup>2</sup> .....	06	71	2.1	-0.1	0.1	-0.2	1.5	0.3
Cleaning and polishing products <sup>2</sup> .....	06	72	1.8	0.0	0.1	-0.1	0.0	0.1
Cosmetics and other toiletries <sup>2</sup> .....	06	75	3.7	-0.1	0.3	0.0	0.0	0.0
Tires <sup>2</sup> .....	07	1201	-0.8	-0.2	-0.1	-0.1	0.0	0.1
Consumer, institutional, and commercial products, n.e.c. <sup>2</sup> .....	07	2B	-0.3	-0.3	0.2	-0.1	-0.1	-0.1
Sanitary paper products <sup>2</sup> .....	09	1501	-1.3	0.1	-0.9	-0.4	-0.5	-0.2
Iron and steel scrap.....	10	12	7.7	1.4	1.5	5.0	0.5	-6.2
Agricultural machinery and equipment <sup>2</sup> .....	11	1	1.4	0.4	0.4	-0.5	0.1	0.0
Construction machinery and equipment <sup>2</sup> .....	11	2	4.5	0.2	0.0	0.9	0.1	0.6
Metal cutting machine tools <sup>2</sup> .....	11	37	2.4	0.0	0.0	0.0	0.0	0.3
Metal forming machine tools.....	11	38	10.5	6.9	0.1	-0.4	0.6	0.4
Tools, dies, jigs, fixtures, and industrial molds <sup>2</sup> .....	11	39	8.2	0.1	0.2	0.4	0.2	3.5
Pumps, compressors, and equipment <sup>2</sup> .....	11	41	5.2	-0.3	0.0	0.1	0.1	1.5
Industrial material handling equipment <sup>2</sup> .....	11	44	3.4	0.0	0.2	0.1	0.0	1.5
Electronic computers and computer equipment <sup>2</sup> .....	11	5	-2.1	-0.1	-0.7	0.3	0.4	0.1
Textile machinery and equipment <sup>2</sup> .....	11	62	0.0	0.0	0.0	0.0	0.0	0.0
Paper industries machinery <sup>2</sup> .....	11	64	3.2	-0.1	0.0	0.0	0.2	0.6
Printing trades machinery and equipment <sup>2</sup> .....	11	65	3.0	-0.4	2.2	-0.3	0.7	-0.1
Transformers and power regulators <sup>2</sup> .....	11	74	4.6	0.0	0.2	0.0	1.6	0.8
Communication and related equipment.....	11	76	4.3	0.1	0.1	0.2	0.2	2.4
Electronic components and accessories.....	11	78	0.7	0.4	0.0	0.1	0.0	0.5
X-ray and electromedical equipment <sup>2</sup> .....	11	7905	1.4	0.0	0.0	0.0	0.0	0.2
Oil field and gas field machinery <sup>2</sup> .....	11	91	3.9	0.7	0.0	-0.3	0.0	2.7
Mining machinery and equipment <sup>2</sup> .....	11	92	9.6	0.3	0.2	2.4	0.0	0.2
Internal combustion engines <sup>2</sup> .....	11	94	4.7	0.1	-0.1	0.1	0.0	2.4

See footnotes at end of table.

**Table 2. Producer price index percentage changes for selected commodity groupings by Final Demand-Intermediate Demand category, seasonally adjusted — Continued**  
[January 2024]

Grouping	Commodity code		Unadjusted 12-month percent change <sup>1</sup>	Seasonally adjusted 1-month percent change <sup>1</sup>				
	Group code	Item code		Jan. 2023 to Jan. 2024 <sup>P</sup>	Aug. to Sept.	Sept. to Oct. <sup>P</sup>	Oct. to Nov. <sup>P</sup>	Nov. to Dec. <sup>P</sup>
Household furniture <sup>2</sup> .....	12	1	-1.7	-0.4	-1.2	-0.1	0.0	0.1
Commercial furniture <sup>2</sup> .....	12	2	2.4	0.2	0.0	0.6	-0.6	0.6
Floor coverings <sup>2</sup> .....	12	3	-0.5	1.6	-0.9	-1.4	-0.4	0.2
Household appliances <sup>2</sup> .....	12	4	1.3	0.0	0.1	0.4	-0.2	0.1
Home electronic equipment <sup>2</sup> .....	12	5	0.8	0.0	0.0	0.2	0.0	0.0
Lawn and garden equipment excl. garden tractors <sup>2</sup> .....	12	66	1.9	0.0	0.5	0.6	0.6	0.1
Passenger cars.....	14	1101	-3.3	0.0	0.8	-0.2	-2.4	0.0
Light motor trucks.....	14	1105	1.2	0.3	-0.2	0.3	0.0	0.3
Heavy motor trucks <sup>2</sup> .....	14	1106	1.7	0.2	0.0	0.0	0.1	0.0
Motor vehicles parts <sup>2</sup> .....	14	12	0.8	0.1	0.0	0.1	-0.2	0.0
Truck trailers <sup>2</sup> .....	14	14	-1.8	-0.2	-0.3	0.0	0.0	-0.3
Travel trailers and campers <sup>2</sup> .....	14	16	0.6	0.1	-0.2	0.0	0.0	0.0
Aircraft.....	14	21	4.9	1.8	0.1	0.1	0.0	0.3
Ships <sup>2</sup> .....	14	31	2.3	0.0	0.5	0.0	0.0	0.0
Railroad equipment <sup>2</sup> .....	14	4	2.0	0.0	-0.1	0.8	0.0	0.1
Toys, games, and children's vehicles <sup>2</sup> .....	15	11	0.3	0.0	0.0	0.0	0.0	0.0
Sporting and athletic goods <sup>2</sup> .....	15	12	10.0	1.1	0.0	2.2	2.1	1.1
Cigarettes <sup>2</sup> .....	15	21	10.7	0.4	1.2	1.4	0.0	0.9
Mobile homes.....	15	5	-2.2	-0.3	0.3	0.4	-0.1	0.3
Medical, surgical & personal aid devices.....	15	6	2.2	0.1	0.0	0.2	0.4	0.4
Jewelry, platinum and karat gold <sup>2</sup> .....	15	9402	2.0	0.5	-2.2	2.4	2.6	0.5
Costume jewelry and novelties <sup>2</sup> .....	15	9404	3.6	0.0	0.0	0.0	0.0	0.7
Final demand services.....	FD	42	2.2	-0.1	0.1	0.2	-0.1	0.6
Final demand trade services <sup>3</sup> .....	FD	423	-0.2	-1.1	0.0	0.4	-1.0	0.2
Machinery and equipment parts and supplies wholesaling <sup>2</sup> .....	57	1102	7.0	-0.1	0.7	1.5	-0.2	0.1
Machinery and vehicle wholesaling <sup>2</sup> .....	57	1103	-1.2	-7.7	1.4	5.8	-8.5	4.4
Professional and commercial equipment wholesaling <sup>2</sup> .....	57	1104	5.9	0.5	1.4	-1.6	1.2	1.4
Furnishings wholesaling <sup>2</sup> .....	57	2	-7.5	2.1	-3.7	1.0	0.1	-0.5
Chemicals and allied products wholesaling <sup>2</sup> .....	57	5	0.9	-2.4	4.8	1.2	-5.8	11.6
Paper and plastics products wholesaling <sup>2</sup> .....	57	6	2.4	-1.0	0.6	-0.2	0.7	0.8
Apparel wholesaling <sup>2</sup> .....	57	7	-2.0	2.4	1.1	0.6	-8.6	-3.8
Food and alcohol wholesaling <sup>2</sup> .....	57	8	1.5	0.0	-0.7	2.4	-1.1	-1.6
Food and alcohol retailing.....	58	1	4.1	-0.5	-0.8	-0.4	0.9	0.5
Health, beauty, and optical goods retailing <sup>2</sup> .....	58	2	1.8	1.3	-2.2	-1.0	3.0	0.0
Apparel, jewelry, footwear, and accessories retailing.....	58	3	6.4	1.8	-4.0	-0.2	5.7	2.7
Computer hardware, software, and supplies retailing <sup>2</sup> .....	58	4	-38.5	20.3	-27.9	6.4	12.6	-28.1
TV, video, and photographic equipment and supplies retailing.....	58	5	-2.5	9.9	8.1	3.9	-6.8	0.8
Automobiles retailing (partial).....	58	6101	-26.8	-2.5	-5.1	-4.3	-5.3	-0.6
Automotive parts, including tires, retailing <sup>2</sup> .....	58	6102	0.1	-1.0	-1.5	3.8	1.3	0.5
RVs, trailers, and campers retailing <sup>2</sup> .....	58	8	-10.4	-4.8	-0.3	3.6	-10.9	1.8
Sporting goods, including boats, retailing.....	58	9	0.8	0.6	-1.1	-3.0	4.7	2.2
Lawn, garden, and farm equipment and supplies retailing <sup>2</sup> .....	58	A	16.7	1.8	-0.4	-0.4	0.3	-0.9
Furniture retailing <sup>2</sup> .....	58	B	-4.0	-0.3	0.3	-5.6	0.0	-2.1
Flooring and floor coverings retailing <sup>2</sup> .....	58	C	3.2	0.5	0.7	0.6	0.2	-0.2
Hardware, building materials, and supplies retailing.....	58	D	7.7	3.2	0.8	0.0	-0.6	-1.4
Major household appliances retailing.....	58	E	-1.9	4.2	-4.4	2.9	-4.0	-4.9
Fuels and lubricants retailing.....	58	F	-8.3	-3.7	16.4	-5.1	4.4	-7.7
Cleaning supplies and paper products retailing <sup>2</sup> .....	58	G	18.2	0.9	0.1	-1.8	-0.1	2.4
Book retailing <sup>2</sup> .....	58	H	-2.8	0.7	0.5	-3.2	0.1	1.9
Final demand transportation and warehousing services.....	FD	422	-4.3	0.4	0.5	-0.2	-0.2	-0.4
Rail transportation of freight and mail <sup>2</sup> .....	30	11	0.9	0.7	1.2	0.4	-0.1	0.9
Truck transportation of freight <sup>2</sup> .....	30	12	-7.3	1.6	0.1	-0.2	-1.4	-0.6
Air transportation of freight <sup>2</sup> .....	30	14	-0.5	1.4	0.7	2.1	-0.9	-0.9
Courier, messenger, and U.S. postal services.....	30	16	3.7	0.5	0.5	-0.3	0.3	0.3
Rail transportation of passengers.....	30	21	0.0	0.0	0.0	0.1	0.1	-0.1
Airline passenger services.....	30	22	-2.3	-2.2	1.2	-0.5	2.3	-0.5
Final demand services less trade, transportation, and warehousing.....	FD	421	4.1	0.3	0.0	0.1	0.3	0.8
Sales of books.....	33	11	7.9	0.5	0.8	1.0	0.8	0.9
Sales and subscriptions of periodicals and newspapers.....	33	12	2.4	0.1	0.0	-0.1	1.5	-0.3
Application software publishing <sup>2</sup> .....	34	2	4.2	2.8	0.8	-1.6	1.2	1.6
Advertising space sales in periodicals, newspapers, directories, and mailing lists <sup>2</sup> .....	36	1	0.0	-0.4	-0.3	-0.2	0.0	0.3
Residential wired telecommunication services <sup>2</sup> .....	37	11	5.0	0.5	0.1	0.1	0.1	0.3
Wireless telecommunication services.....	37	2	1.1	0.1	0.1	0.1	0.1	0.1
Cable and satellite subscriber services.....	37	3	6.1	0.5	0.5	0.4	0.3	-0.6
Internet access services <sup>2</sup> .....	37	4	-0.2	-1.4	0.0	1.0	-0.2	0.7

See footnotes at end of table.

**Table 2. Producer price index percentage changes for selected commodity groupings by Final Demand-Intermediate Demand category, seasonally adjusted — Continued**  
 [January 2024]

Grouping	Commodity code		Unadjusted 12-month percent change <sup>1</sup>	Seasonally adjusted 1-month percent change <sup>1</sup>				
	Group code	Item code		Jan. 2023 to Jan. 2024 <sup>P</sup>	Aug. to Sept.	Sept. to Oct. <sup>P</sup>	Oct. to Nov. <sup>P</sup>	Nov. to Dec. <sup>P</sup>
Bundled wired telecommunications access services <sup>2</sup> .....	37	5	1.5	-2.9	0.2	-0.2	1.9	2.7
Consumer loans (partial).....	39	12	6.8	0.9	-0.5	0.3	4.2	0.8
Deposit services (partial) <sup>2</sup> .....	39	2	15.6	4.3	0.8	2.7	1.9	1.2
Other credit intermediation, incl. trust services (partial) <sup>2</sup> .....	39	3	1.7	0.0	0.0	-3.7	-0.2	0.0
Securities brokerage, dealing, investment advice, and related services <sup>2</sup> ...	40	1	11.5	-0.1	-1.9	0.1	2.9	0.7
Portfolio management <sup>2</sup> .....	40	2	7.2	-0.5	-3.0	-1.7	1.4	5.5
Life insurance <sup>2</sup> .....	41	1101	-1.2	-0.4	0.1	0.0	0.0	0.0
Disability insurance, including accidental death <sup>2</sup> .....	41	1102	0.0	0.0	0.0	0.0	0.0	0.0
Health and medical insurance.....	41	1103	1.1	0.3	0.2	0.2	0.1	-1.1
Property and casualty insurance <sup>2</sup> .....	41	1104	5.3	0.8	0.0	0.0	0.1	0.1
Annuities <sup>2</sup> .....	41	2	0.7	0.0	-0.3	0.0	0.0	0.2
Residential property sales and leases, brokerage fees and commissions..	43	21	5.6	0.1	0.4	0.3	0.5	-0.1
Passenger car rental.....	44	1	-7.6	0.6	0.8	-2.1	1.3	-3.7
Legal services.....	45	1	7.0	0.3	0.9	0.3	0.4	2.0
Tax preparation and planning.....	45	2102	-3.0	1.7	-4.0	-0.7	-0.2	-0.3
Architectural and engineering services.....	45	3	2.0	0.2	0.8	0.0	0.1	-1.0
Management, scientific, and technical consulting services <sup>2</sup> .....	45	4	3.7	5.1	-3.6	2.1	0.9	0.1
Arrangement of flights (partial).....	47	1	4.4	0.0	-0.4	0.2	-0.2	-1.2
Arrangement of vehicle rentals and lodging <sup>2</sup> .....	47	2	-3.3	-0.2	-0.8	-0.1	-0.1	-0.9
Arrangement of cruises and tours <sup>2</sup> .....	47	3	-0.6	-0.4	0.6	-0.7	-1.5	-0.9
Physician care.....	51	1101	1.4	0.0	0.1	0.0	0.1	0.5
Medical laboratory and diagnostic imaging care <sup>2</sup> .....	51	1102	0.0	0.0	0.0	-0.1	0.0	-0.1
Home health and hospice care.....	51	1103	4.5	0.4	0.2	0.1	0.2	-0.4
Hospital outpatient care <sup>2</sup> .....	51	1104	5.7	0.2	0.8	-0.2	-0.4	2.2
Dental care.....	51	1105	2.9	0.0	0.0	0.2	0.1	0.0
Hospital inpatient care.....	51	2101	4.8	1.3	0.7	0.1	0.7	0.3
Nursing home care.....	51	2102	3.7	0.3	0.2	0.1	0.2	0.4
Traveler accommodation services.....	53	11	2.1	0.9	-2.8	1.6	-6.0	4.7
Food and beverages for immediate consumption services (partial) <sup>2</sup> .....	54	1	3.7	0.1	1.0	0.3	0.0	0.1
Motor vehicle repair and maintenance (partial) <sup>2</sup> .....	55	2	4.1	-2.2	0.3	0.5	0.2	0.0
Membership dues and admissions and recreation facility use fees (partial) <sup>2</sup> .....	56	1	4.7	0.0	1.8	1.8	2.3	0.1
Recreational activity instruction fees (partial) <sup>2</sup> .....	56	2	0.9	0.0	0.0	0.0	0.0	0.6
Gaming receipts (partial) <sup>2</sup> .....	56	3	0.0	0.6	1.7	-0.2	1.8	-1.6
Mining services <sup>2</sup> .....	60	1	1.5	0.8	-0.7	1.2	0.1	0.0
Final demand construction.....	FD	43	-1.0	0.1	-0.3	-0.1	0.1	0.3
New warehouse building construction <sup>2</sup> .....	80	1101	-1.5	0.0	-0.5	-0.2	0.1	0.0
New school building construction <sup>2</sup> .....	80	1102	-1.1	0.1	-0.2	0.0	-0.2	0.5
New office building construction <sup>2</sup> .....	80	1103	-1.2	-0.1	-0.5	-0.1	0.2	0.2
New industrial building construction <sup>2</sup> .....	80	1104	-0.1	0.6	0.0	-0.1	0.0	0.8
New health care building construction <sup>2</sup> .....	80	1105	-1.2	0.0	0.0	-0.5	0.2	0.1
<b>Intermediate Demand by Commodity Type</b>								
Processed goods for intermediate demand.....	ID6	1	-3.8	0.5	-1.0	-0.5	-0.5	-0.2
Processed foods and feeds.....	ID6	9112	-6.5	0.7	-0.2	-0.5	-0.6	-1.5
Meats.....	02	21	1.8	1.5	1.3	0.1	0.2	-3.5
Processed poultry.....	02	22	-8.2	4.7	2.0	-6.5	1.4	0.6
Dairy products <sup>2</sup> .....	02	3	-6.8	1.7	1.6	-0.6	-1.4	-1.4
Processed fruits and vegetables <sup>2</sup> .....	02	4	8.9	2.0	0.6	0.2	0.3	0.3
Refined sugar and byproducts <sup>2</sup> .....	02	53	9.9	-2.3	0.9	3.3	0.0	0.9
Fats and oils <sup>2</sup> .....	02	7	-20.5	-0.8	-0.2	-0.4	-1.7	-2.6
Prepared animal feeds.....	02	9	-7.9	0.0	-0.8	-0.2	-0.7	-2.4
Processed materials less foods and feeds.....	ID6	9111	-3.5	0.5	-1.1	-0.6	-0.5	-0.1
Synthetic fibers <sup>2</sup> .....	03	1	-4.3	2.4	2.3	-0.6	-3.2	-0.8
Processed yarns and threads <sup>2</sup> .....	03	2	-2.9	0.3	-0.6	-1.1	0.2	0.3
Finished fabrics <sup>2</sup> .....	03	4	-0.9	0.1	-0.1	-0.1	0.2	0.0
Liquefied petroleum gas <sup>2</sup> .....	05	32	-13.0	9.7	-7.0	-5.7	-2.5	4.5
Commercial electric power.....	05	42	1.0	0.5	0.2	1.5	1.1	-3.3
Industrial electric power.....	05	43	-0.8	0.3	0.6	1.6	1.1	-1.9
Commercial natural gas.....	05	52	-24.7	-1.3	1.1	2.7	2.0	0.0
Industrial natural gas.....	05	53	-21.6	-1.9	-1.8	2.2	0.0	2.2
Natural gas to electric utilities.....	05	54	-13.9	0.0	-2.0	-0.1	-0.3	4.3
Gasoline.....	05	71	-13.1	6.1	-15.0	-4.0	1.6	-3.6
Jet fuel <sup>2</sup> .....	05	7203	-24.3	7.1	-3.2	-5.8	-12.2	-1.6
No. 2 diesel fuel.....	05	7303	-27.0	0.8	-11.8	-3.7	-9.3	-0.4
Residual fuels <sup>2</sup> .....	05	74	17.1	5.7	4.0	-5.2	-6.8	-0.4

See footnotes at end of table.

**Table 2. Producer price index percentage changes for selected commodity groupings by Final Demand-Intermediate Demand category, seasonally adjusted — Continued**  
 [January 2024]

Grouping	Commodity code		Unadjusted 12-month percent change <sup>1</sup>	Seasonally adjusted 1-month percent change <sup>1</sup>				
	Group code	Item code		Jan. 2023 to Jan. 2024 <sup>P</sup>	Aug. to Sept.	Sept. to Oct. <sup>P</sup>	Oct. to Nov. <sup>P</sup>	Nov. to Dec. <sup>P</sup>
Finished lubricants <sup>2</sup> .....	05	76	0.4	-1.1	-0.2	0.2	0.7	0.3
Lubricating oil base stocks <sup>2</sup> .....	05	78	-12.0	-0.1	11.9	2.1	0.6	-12.1
Asphalt.....	05	8102	15.7	5.0	2.9	2.3	4.4	2.6
Basic inorganic chemicals <sup>2</sup> .....	06	13	-12.2	-0.2	-1.9	-0.1	-0.2	-0.5
Basic organic chemicals.....	06	14	-13.7	1.5	2.8	-2.5	-2.3	-4.4
Prepared paint <sup>2</sup> .....	06	21	-0.6	0.0	-0.4	0.0	0.0	0.3
Paint materials <sup>2</sup> .....	06	22	-0.8	-0.8	-4.0	0.1	0.9	-0.4
Medicinal and botanical chemicals <sup>2</sup> .....	06	31	0.9	0.0	0.9	0.0	-0.2	0.4
Biological products, including diagnostics.....	06	37	2.4	0.4	0.3	0.3	0.0	-1.6
Fats and oils, inedible <sup>2</sup> .....	06	4	2.0	0.0	-6.5	-5.5	-1.8	23.3
Nitrogenates.....	06	5201	-31.7	0.8	1.4	-0.7	4.9	-2.0
Phosphates.....	06	5202	-9.1	0.9	4.6	1.9	2.9	3.9
Other agricultural chemicals <sup>2</sup> .....	06	53	-14.6	-4.2	0.2	-0.1	0.0	-0.4
Plastic resins and materials.....	06	6	-5.1	0.3	-2.3	1.8	1.1	0.6
Industrial gases <sup>2</sup> .....	06	7903	0.6	1.5	0.8	-1.7	-0.1	-0.8
Adhesives and sealants <sup>2</sup> .....	06	7904	1.2	0.1	0.1	0.0	-0.2	0.0
Synthetic rubber <sup>2</sup> .....	07	1102	-7.0	1.1	2.4	0.2	-1.5	-1.5
Tires <sup>2</sup> .....	07	1201	-0.8	-0.2	-0.1	-0.1	0.0	0.1
Plastic construction products <sup>2</sup> .....	07	21	-2.9	0.2	0.0	0.0	-0.4	0.3
Unsupported plastic film, sheet, other shapes <sup>2</sup> .....	07	22	-5.5	-1.5	0.5	0.0	0.7	0.0
Parts for manufacturing from plastics <sup>2</sup> .....	07	26	-1.8	-0.2	-0.2	-0.3	2.0	0.1
Plastic packaging products <sup>2</sup> .....	07	2A	-1.6	0.0	-0.4	0.3	-0.4	1.2
Softwood lumber.....	08	11	-9.0	-0.3	-2.3	-4.2	-1.7	-1.8
Hardwood lumber <sup>2</sup> .....	08	12	-2.7	3.5	-4.9	1.3	4.1	0.1
Millwork.....	08	2	-3.1	0.2	0.2	0.3	0.0	-0.1
Plywood <sup>2</sup> .....	08	3	-2.6	1.4	1.6	-1.3	-0.1	-0.1
Paper <sup>2</sup> .....	09	13	-0.2	0.6	-0.5	-0.1	0.2	0.5
Paperboard <sup>2</sup> .....	09	14	-7.7	0.5	-0.4	-0.1	-1.5	0.4
Paper boxes and containers <sup>2</sup> .....	09	1503	-4.0	-0.2	-0.1	-0.2	-0.1	-0.5
Building paper and board <sup>2</sup> .....	09	2	10.0	-0.2	-18.4	-2.4	3.0	-0.2
Commercial printing <sup>2</sup> .....	09	47	1.9	0.2	0.0	0.1	0.0	0.8
Foundry and forge shop products <sup>2</sup> .....	10	15	2.0	-0.1	-0.6	-0.2	0.9	1.0
Steel mill products <sup>2</sup> .....	10	17	4.4	-3.5	-2.5	-1.9	2.4	5.4
Primary nonferrous metals <sup>2</sup> .....	10	22	-2.2	1.9	-2.0	0.6	-1.0	0.6
Secondary nonferrous metals <sup>2</sup> .....	10	24	-5.6	-0.3	-1.4	0.2	0.0	0.8
Aluminum mill shapes <sup>2</sup> .....	10	2501	-5.5	-0.9	-0.4	-0.2	-0.1	-1.7
Copper and brass mill shapes <sup>2</sup> .....	10	2502	-2.2	0.2	-1.3	-0.3	1.0	1.0
Nonferrous wire and cable <sup>2</sup> .....	10	26	-6.4	-1.5	-0.5	0.0	0.4	0.8
Nonferrous foundry shop products.....	10	28	3.0	0.1	0.4	-0.3	0.7	0.2
Metal containers <sup>2</sup> .....	10	3	-3.1	-0.2	-0.9	-0.5	0.0	0.3
Hardware <sup>2</sup> .....	10	4	0.2	0.0	0.0	0.1	-0.1	-0.3
Plumbing fixtures and brass fittings.....	10	5	1.2	-0.1	0.0	0.2	-0.3	0.7
Heating equipment <sup>2</sup> .....	10	6	2.8	-0.1	0.7	0.0	0.2	0.7
Fabricated structural metal products.....	10	7	2.4	0.5	0.7	0.5	1.1	0.5
Bolts, nuts, screws, rivets, and washers <sup>2</sup> .....	10	81	9.0	2.9	-0.5	0.4	0.0	1.9
Lighting fixtures <sup>2</sup> .....	10	83	2.7	0.2	0.0	0.1	0.1	0.0
Fabricated ferrous wire products.....	10	88	-7.9	-0.4	-1.3	0.7	-0.3	0.2
Other miscellaneous metal products <sup>2</sup> .....	10	89	1.7	0.0	0.2	0.1	0.0	0.5
Fluid power equipment <sup>2</sup> .....	11	43	9.5	0.5	2.1	-1.9	0.0	0.7
Mechanical power transmission equipment <sup>2</sup> .....	11	45	2.9	0.3	0.4	0.6	0.0	0.5
Air conditioning and refrigeration equipment.....	11	48	3.6	0.2	0.5	0.6	0.0	-0.6
Metal valves, except fluid power.....	11	4902	2.4	0.3	0.8	0.3	0.5	-1.7
Ball and roller bearings <sup>2</sup> .....	11	4905	2.9	0.1	0.0	0.2	-0.2	1.0
Wiring devices <sup>2</sup> .....	11	71	-4.6	0.0	0.2	-0.3	-0.4	-0.6
Motors, generators, motor generator sets <sup>2</sup> .....	11	73	4.2	0.1	0.1	-0.3	0.0	-0.1
Switchgear, switchboard, and industrial controls equip. <sup>2</sup> .....	11	75	6.2	0.1	0.4	0.9	0.2	1.3
Electronic components and accessories.....	11	78	0.7	0.4	0.0	0.1	0.0	0.5
Internal combustion engines <sup>2</sup> .....	11	94	4.7	0.1	-0.1	0.1	0.0	2.4
Machine shop products <sup>2</sup> .....	11	95	1.5	0.0	-0.2	0.0	-0.2	0.1
Flat glass <sup>2</sup> .....	13	11	2.4	0.3	0.2	0.2	0.6	-0.2
Cement.....	13	22	8.2	0.6	0.9	0.6	0.8	1.2
Concrete products.....	13	3	6.2	0.9	0.6	0.4	-0.6	0.8
Asphalt felts and coatings <sup>2</sup> .....	13	6	4.8	0.6	0.6	-0.3	0.3	-0.3
Paving mixtures and blocks.....	13	94	3.9	0.9	1.1	1.3	0.9	0.3
Motor vehicle parts <sup>2</sup> .....	14	12	0.8	0.1	0.0	0.1	-0.2	0.0
Aircraft engines and engine parts.....	14	23	3.4	0.1	0.2	0.9	0.4	0.5

See footnotes at end of table.

**Table 2. Producer price index percentage changes for selected commodity groupings by Final Demand-Intermediate Demand category, seasonally adjusted — Continued**  
 [January 2024]

Grouping	Commodity code		Unadjusted 12-month percent change <sup>1</sup>	Seasonally adjusted 1-month percent change <sup>1</sup>				
	Group code	Item code		Jan. 2023 to Jan. 2024 <sup>P</sup>	Aug. to Sept.	Sept. to Oct. <sup>P</sup>	Oct. to Nov. <sup>P</sup>	Nov. to Dec. <sup>P</sup>
Aircraft parts and auxiliary equipment, n.e.c.....	14	25	4.0	0.0	0.1	0.1	0.0	0.1
Medical, surgical, and personal aid devices.....	15	6	2.2	0.1	0.0	0.2	0.4	0.4
Unprocessed goods for intermediate demand.....	ID6	2	-15.0	2.9	-1.6	-2.1	-4.4	0.1
Unprocessed foodstuffs and feedstuffs.....	ID6	21	-14.5	1.2	-2.1	-0.4	-3.3	-2.2
Wheat <sup>2</sup> .....	01	21	-24.2	-5.2	-6.0	-1.2	2.4	-3.3
Corn.....	01	2202	-34.5	-5.3	-2.9	-3.5	-2.0	-6.5
Slaughter cattle.....	01	31	12.0	1.6	0.2	-4.4	-3.2	1.3
Slaughter hogs.....	01	32	-37.6	-3.0	-5.1	-4.4	-18.8	-2.9
Slaughter chickens.....	01	4102	6.8	8.2	-1.0	-1.3	4.8	-3.3
Slaughter turkeys.....	01	42	-29.4	-4.2	-14.1	4.7	1.3	14.1
Raw milk.....	01	6	-16.6	5.2	-2.4	-1.4	-5.1	-3.1
Hay and hayseeds <sup>2</sup> .....	01	81	-31.7	5.4	-4.7	7.1	-17.5	-2.0
Oilseeds.....	01	8301	-16.9	1.9	-0.9	2.2	-3.8	-9.2
Raw cane sugar and byproducts <sup>2</sup> .....	02	5201	6.7	-0.3	4.1	-0.7	-0.3	-2.3
Unprocessed nonfood materials.....	ID6	22	-15.3	4.0	-1.4	-3.1	-5.1	1.6
Raw cotton <sup>2</sup> .....	01	51	-10.0	1.6	-1.5	-6.2	3.6	-0.4
Hides and skins.....	04	1	-4.6	-0.9	-5.7	1.3	-3.0	0.0
Coal <sup>2</sup> .....	05	1	0.1	-3.4	2.7	2.7	-0.5	0.4
Natural gas <sup>2</sup> .....	05	31	-55.8	-2.6	1.2	9.9	-4.2	-2.4
Crude petroleum <sup>2</sup> .....	05	61	-1.6	10.3	-3.4	-9.6	-10.8	6.1
Logs, bolts, timber, pulpwood, and woodchips <sup>2</sup> .....	08	5	-4.4	0.0	-0.1	-1.1	-0.3	0.2
Recyclable paper <sup>2</sup> .....	09	12	74.4	9.6	10.8	4.0	1.9	8.2
Iron ores <sup>2</sup> .....	10	11	-5.4	0.5	-1.1	-0.7	-0.3	0.6
Iron and steel scrap.....	10	12	7.7	1.4	1.5	5.0	0.5	-6.2
Nonferrous metal ores <sup>2</sup> .....	10	21	-5.4	0.5	1.8	3.4	1.2	-1.1
Copper base scrap <sup>2</sup> .....	10	2301	-4.2	-0.6	-2.7	0.5	1.8	-0.8
Aluminum base scrap.....	10	2302	-2.5	0.3	0.4	2.3	-0.9	-5.0
Construction sand, gravel, and crushed stone.....	13	21	8.1	0.4	0.5	0.5	0.5	3.3
Services for intermediate demand.....	ID6	3	3.1	0.3	-0.1	0.5	0.4	0.5
Trade services for intermediate demand <sup>3</sup> .....	ID6	33	3.7	-0.4	1.4	1.3	-0.3	0.1
Machinery and equipment parts and supplies wholesaling <sup>2</sup> .....	57	1102	7.0	-0.1	0.7	1.5	-0.2	0.1
Building materials, paint, and hardware wholesaling.....	57	3	-7.8	0.5	0.1	-1.1	-1.5	-0.1
Metals, minerals, and ores wholesaling <sup>2</sup> .....	57	4	12.4	-2.5	4.6	10.5	3.4	2.5
Chemicals and allied products wholesaling <sup>2</sup> .....	57	5	0.9	-2.4	4.8	1.2	-5.8	11.6
Paper and plastics products wholesaling <sup>2</sup> .....	57	6	2.4	-1.0	0.6	-0.2	0.7	0.8
Food wholesaling <sup>2</sup> .....	57	8101	1.5	0.0	-0.9	2.6	-1.3	-1.8
Automotive parts, including tires, retailing <sup>2</sup> .....	58	6102	0.1	-1.0	-1.5	3.8	1.3	0.5
Hardware, building material, and supplies retailing.....	58	D	7.7	3.2	0.8	0.0	-0.6	-1.4
Transportation and warehousing services for intermediate demand.....	ID6	32	-0.5	0.8	0.4	-0.1	0.8	-0.1
Rail transportation of freight and mail <sup>2</sup> .....	30	11	0.9	0.7	1.2	0.4	-0.1	0.9
Truck transportation of freight <sup>2</sup> .....	30	12	-7.3	1.6	0.1	-0.2	-1.4	-0.6
Water transportation of freight <sup>2</sup> .....	30	13	1.7	-0.8	-2.3	0.4	0.3	-0.7
Air transportation of freight <sup>2</sup> .....	30	14	-0.5	1.4	0.7	2.1	-0.9	-0.9
U.S. Postal Service <sup>2</sup> .....	30	1601	3.8	0.0	0.0	0.0	0.0	0.0
Courier and messenger services, except air mail.....	30	1602	4.4	0.6	0.4	0.0	0.5	0.1
Air mail and package delivery services, excluding by USPS.....	30	1603	2.5	1.0	1.3	-1.0	0.3	0.9
Pipeline transportation <sup>2</sup> .....	30	17	2.7	-0.2	-0.2	-0.1	0.0	0.1
Transportation of passengers (partial).....	30	2	-2.3	-2.2	1.2	-0.5	2.3	-0.5
Services related to water transportation <sup>2</sup> .....	31	1	3.2	0.1	1.2	0.3	0.4	0.8
Arrangement of freight and cargo <sup>2</sup> .....	31	31	-8.7	5.6	1.6	-0.3	12.3	-0.1
Warehousing, storage, and related services <sup>2</sup> .....	32	1	0.5	2.0	-0.3	-0.5	0.0	-0.1
Services less trade, transportation, and warehousing for intermediate demand.....	ID6	31	3.6	0.4	-0.5	0.4	0.5	0.7
Network compensation from broadcast TV, cable TV, radio <sup>2</sup> .....	35	-	0.6	0.0	0.0	0.0	0.0	0.2
Advertising space sales in periodicals and newspapers <sup>2</sup> .....	36	11	-0.1	-0.4	-0.4	-0.2	0.0	0.3
Advertising space sales in directories and mail lists <sup>2</sup> .....	36	12	0.1	0.0	0.0	0.0	0.0	0.0
Television advertising time sales.....	36	2	-15.1	-3.5	0.6	6.3	1.7	-0.9
Radio advertising time sales.....	36	3	-6.2	-0.7	-0.7	4.7	1.5	-16.3
Internet advertising sales <sup>2</sup> .....	36	6	1.4	0.0	0.0	0.0	0.0	-0.2
Business wired telecommunication services <sup>2</sup> .....	37	12	2.7	0.2	-0.5	0.2	-0.1	-0.5
Wireless telecommunication services.....	37	2	1.1	0.1	0.1	0.1	0.1	0.1
Cable and satellite subscriber services.....	37	3	6.1	0.5	0.5	0.4	0.3	-0.6
Bundled wired telecommunication access services <sup>2</sup> .....	37	5	1.5	-2.9	0.2	-0.2	1.9	2.7
Data processing and related services <sup>2</sup> .....	38	1	2.4	-0.2	0.2	0.3	0.3	0.4
Business loans (partial).....	39	11	3.8	-1.9	0.5	-1.2	-0.2	0.7

See footnotes at end of table.



**Table 2. Producer price index percentage changes for selected commodity groupings by Final Demand-Intermediate Demand category, seasonally adjusted — Continued**  
 [January 2024]

Grouping	Commodity code		Unadjusted 12-month percent change <sup>1</sup>	Seasonally adjusted 1-month percent change <sup>1</sup>				
	Group code	Item code		Jan. 2023 to Jan. 2024 <sup>P</sup>	Aug. to Sept.	Sept. to Oct. <sup>P</sup>	Oct. to Nov. <sup>P</sup>	Nov. to Dec. <sup>P</sup>
Deposit services (partial) <sup>2</sup> .....	39	2	15.6	4.3	0.8	2.7	1.9	1.2
Other credit intermediation, incl. trust services (partial) <sup>2</sup> .....	39	3	1.7	0.0	0.0	-3.7	-0.2	0.0
Securities brokerage, dealing, investment advice, and related services <sup>2</sup> .....	40	1	11.5	-0.1	-1.9	0.1	2.9	0.7
Portfolio management <sup>2</sup> .....	40	2	7.2	-0.5	-3.0	-1.7	1.4	5.5
Investment banking <sup>2</sup> .....	40	3	8.1	2.9	-0.1	-0.7	-0.7	0.3
Life insurance <sup>2</sup> .....	41	1101	-1.2	-0.4	0.1	0.0	0.0	0.0
Health and medical insurance.....	41	1103	1.1	0.3	0.2	0.2	0.1	-1.1
Property and casualty insurance <sup>2</sup> .....	41	1104	5.3	0.8	0.0	0.0	0.1	0.1
Annuities <sup>2</sup> .....	41	2	0.7	0.0	-0.3	0.0	0.0	0.2
Commissions from sales of insurance <sup>2</sup> .....	42	1	-0.1	0.0	0.0	0.0	0.1	-0.1
Nonresidential real estate rents <sup>2</sup> .....	43	11	3.4	2.0	-3.0	1.4	1.1	1.6
Nonresidential property sales and leases <sup>2</sup> .....	43	12	-6.0	0.0	-0.2	-0.2	-1.9	-1.5
Residential property management fees <sup>2</sup> .....	43	22	4.2	-0.5	-0.7	1.1	-0.4	3.3
Passenger car rental.....	44	1	-7.6	0.6	0.8	-2.1	1.3	-3.7
Truck, utility trailer, and RV rental and leasing <sup>2</sup> .....	44	2	-1.0	0.9	-0.6	0.1	-0.9	0.0
Construction, mining, and forestry machinery and equipment rental and leasing <sup>2</sup> .....	44	3	-0.1	0.4	0.2	-0.5	0.4	0.2
Legal services.....	45	1	7.0	0.3	0.9	0.3	0.4	2.0
Accounting services (partial).....	45	2	4.9	1.1	-2.7	-0.7	0.3	1.2
Architectural and engineering services.....	45	3	2.0	0.2	0.8	0.0	0.1	-1.0
Management, scientific, and technical consulting services <sup>2</sup> .....	45	4	3.7	5.1	-3.6	2.1	0.9	0.1
Advertising and related services (partial) <sup>2</sup> .....	45	5	0.5	0.0	0.0	0.0	0.0	0.1
Permanent placement services <sup>2</sup> .....	46	1	2.0	0.4	-0.5	0.7	0.2	0.6
Executive search services <sup>2</sup> .....	46	2	8.6	1.3	0.8	-0.9	3.6	1.0
Staffing services.....	46	3	0.7	0.0	0.2	0.2	0.1	-0.1
Security guard services <sup>2</sup> .....	48	1	11.6	-0.1	0.8	-0.2	2.4	2.8
Janitorial services <sup>2</sup> .....	49	1	-0.6	-2.4	0.1	0.4	0.0	0.6
Waste collection.....	50	1	7.2	1.0	-0.2	0.9	-0.3	-0.1
Traveler accommodation services.....	53	11	2.1	0.9	-2.8	1.6	-6.0	4.7
Commercial and industrial machinery and equipment repair and maintenance.....	55	1	7.6	1.6	-0.6	0.7	0.4	1.9
Aircraft repair and maintenance.....	55	4	8.8	3.7	0.3	0.5	0.2	0.0
Metal treatment services <sup>2</sup> .....	59	1	4.6	-0.3	0.5	-0.3	0.5	1.3
Construction for intermediate demand.....	ID6	4	2.9	0.0	0.1	0.0	0.0	0.4
Maintenance and repair of non-residential buildings (partial) <sup>2</sup> .....	80	2	2.9	0.0	0.1	0.0	0.0	0.4
<b>Intermediate Demand by Production Flow</b>								
Stage 4 intermediate demand.....	ID5	4	1.5	0.3	-0.3	0.2	0.2	0.4
Stage 4 intermediate demand goods.....	ID5	9411	-1.1	0.3	-0.5	-0.1	0.0	-0.2
Grains.....	01	2	-32.0	-5.3	-3.0	-3.0	-1.4	-5.4
Meats.....	02	21	1.8	1.5	1.3	0.1	0.2	-3.5
Unprocessed and packaged fish.....	02	23	0.4	-1.5	-0.9	0.5	0.2	5.8
Dairy products <sup>2</sup> .....	02	3	-6.8	1.7	1.6	-0.6	-1.4	-1.4
Commercial electric power.....	05	42	1.0	0.5	0.2	1.5	1.1	-3.3
Industrial electric power.....	05	43	-0.8	0.3	0.6	1.6	1.1	-1.9
Gasoline.....	05	71	-13.1	6.1	-15.0	-4.0	1.6	-3.6
No. 2 diesel fuel.....	05	7303	-27.0	0.8	-11.8	-3.7	-9.3	-0.4
Basic organic chemicals.....	06	14	-13.7	1.5	2.8	-2.5	-2.3	-4.4
Prepared paint <sup>2</sup> .....	06	21	-0.6	0.0	-0.4	0.0	0.0	0.3
Medicinal and botanical chemicals <sup>2</sup> .....	06	31	0.9	0.0	0.9	0.0	-0.2	0.4
Biological products, including diagnostics.....	06	37	2.4	0.4	0.3	0.3	0.0	-1.6
Pharmaceutical preparations.....	06	38	2.5	0.2	0.3	0.1	0.2	0.2
Plastic construction products <sup>2</sup> .....	07	21	-2.9	0.2	0.0	0.0	-0.4	0.3
Unsupported plastic film, sheet, and other shapes <sup>2</sup> .....	07	22	-5.5	-1.5	0.5	0.0	0.7	0.0
Parts for manufacturing from plastics <sup>2</sup> .....	07	26	-1.8	-0.2	-0.2	-0.3	2.0	0.1
Plastic packaging products <sup>2</sup> .....	07	2A	-1.6	0.0	-0.4	0.3	-0.4	1.2
Lumber.....	08	1	-6.4	1.1	-3.3	-2.1	0.7	-1.0
Millwork.....	08	2	-3.1	0.2	0.2	0.3	0.0	-0.1
Paper boxes and containers <sup>2</sup> .....	09	1503	-4.0	-0.2	-0.1	-0.2	-0.1	-0.5
Commercial printing <sup>2</sup> .....	09	47	1.9	0.2	0.0	0.1	0.0	0.8
Steel mill products <sup>2</sup> .....	10	17	4.4	-3.5	-2.5	-1.9	2.4	5.4
Nonferrous wire and cable <sup>2</sup> .....	10	26	-6.4	-1.5	-0.5	0.0	0.4	0.8
Fabricated structural metal products.....	10	7	2.4	0.5	0.7	0.5	1.1	0.5
Other miscellaneous metal products <sup>2</sup> .....	10	89	1.7	0.0	0.2	0.1	0.0	0.5
Air conditioning and refrigeration equipment.....	11	48	3.6	0.2	0.5	0.6	0.0	-0.6
Wiring devices <sup>2</sup> .....	11	71	-4.6	0.0	0.2	-0.3	-0.4	-0.6

See footnotes at end of table.

**Table 2. Producer price index percentage changes for selected commodity groupings by Final Demand-Intermediate Demand category, seasonally adjusted — Continued**  
 [January 2024]

Grouping	Commodity code		Unadjusted 12-month percent change <sup>1</sup>	Seasonally adjusted 1-month percent change <sup>1</sup>				
	Group code	Item code		Jan. 2023 to Jan. 2024 <sup>P</sup>	Aug. to Sept.	Sept. to Oct. <sup>P</sup>	Oct. to Nov. <sup>P</sup>	Nov. to Dec. <sup>P</sup>
Electronic components and accessories.....	11	78	0.7	0.4	0.0	0.1	0.0	0.5
Miscellaneous electrical machinery and equipment <sup>2</sup> .....	11	79	0.7	0.0	-0.1	-0.1	0.0	0.3
Internal combustion engines <sup>2</sup> .....	11	94	4.7	0.1	-0.1	0.1	0.0	2.4
Machine shop products <sup>2</sup> .....	11	95	1.5	0.0	-0.2	0.0	-0.2	0.1
Concrete ingredients and related products.....	13	2	8.1	0.5	0.6	0.5	0.6	2.7
Concrete products.....	13	3	6.2	0.9	0.6	0.4	-0.6	0.8
Prepared asphalt, tar roofing and siding products <sup>2</sup> .....	13	61	5.7	0.7	0.7	-0.3	0.3	-0.4
Paving mixtures and blocks.....	13	94	3.9	0.9	1.1	1.3	0.9	0.3
Motor vehicle parts <sup>2</sup> .....	14	12	0.8	0.1	0.0	0.1	-0.2	0.0
Aircraft engines and engine parts.....	14	23	3.4	0.1	0.2	0.9	0.4	0.5
Aircraft parts and auxiliary equipment, n.e.c.....	14	25	4.0	0.0	0.1	0.1	0.0	0.1
Medical, surgical and personal aid devices.....	15	6	2.2	0.1	0.0	0.2	0.4	0.4
Stage 4 intermediate demand services.....	ID5	9412	3.8	0.3	-0.2	0.5	0.3	0.8
Truck transportation of freight <sup>2</sup> .....	30	12	-7.3	1.6	0.1	-0.2	-1.4	-0.6
Courier, messenger, and U.S. postal services.....	30	16	3.7	0.5	0.5	-0.3	0.3	0.3
Airline passenger services.....	30	22	-2.3	-2.2	1.2	-0.5	2.3	-0.5
Warehousing, storage, and related services <sup>2</sup> .....	32	1	0.5	2.0	-0.3	-0.5	0.0	-0.1
Advertising space sales in periodicals and newspapers <sup>2</sup> .....	36	11	-0.1	-0.4	-0.4	-0.2	0.0	0.3
Data processing and related services <sup>2</sup> .....	38	1	2.4	-0.2	0.2	0.3	0.3	0.4
Business loans (partial).....	39	11	3.8	-1.9	0.5	-1.2	-0.2	0.7
Deposit services (partial) <sup>2</sup> .....	39	2	15.6	4.3	0.8	2.7	1.9	1.2
Securities brokerage, dealing, investment advice, and related services <sup>2</sup> .....	40	1	11.5	-0.1	-1.9	0.1	2.9	0.7
Portfolio management <sup>2</sup> .....	40	2	7.2	-0.5	-3.0	-1.7	1.4	5.5
Investment banking <sup>2</sup> .....	40	3	8.1	2.9	-0.1	-0.7	-0.7	0.3
Insurance.....	41	11	2.6	0.4	0.2	0.1	0.1	-0.4
Annuities <sup>2</sup> .....	41	2	0.7	0.0	-0.3	0.0	0.0	0.2
Nonresidential real estate rents <sup>2</sup> .....	43	11	3.4	2.0	-3.0	1.4	1.1	1.6
Nonresidential property sales and leases <sup>2</sup> .....	43	12	-6.0	0.0	-0.2	-0.2	-1.9	-1.5
Nonresidential property management fees <sup>2</sup> .....	43	13	7.0	0.1	0.8	-0.4	1.0	-0.8
Residential property management fees <sup>2</sup> .....	43	22	4.2	-0.5	-0.7	1.1	-0.4	3.3
Construction, mining, and forestry machinery and equipment rental and leasing <sup>2</sup> .....	44	3	-0.1	0.4	0.2	-0.5	0.4	0.2
Legal services.....	45	1	7.0	0.3	0.9	0.3	0.4	2.0
Advertising agency services <sup>2</sup> .....	45	51	0.5	0.0	0.0	0.0	0.0	0.1
Accounting services (partial).....	45	2	4.9	1.1	-2.7	-0.7	0.3	1.2
Architectural and engineering services.....	45	3	2.0	0.2	0.8	0.0	0.1	-1.0
Management, scientific, and technical consulting services <sup>2</sup> .....	45	4	3.7	5.1	-3.6	2.1	0.9	0.1
Staffing services.....	46	3	0.7	0.0	0.2	0.2	0.1	-0.1
Janitorial services <sup>2</sup> .....	49	1	-0.6	-2.4	0.1	0.4	0.0	0.6
Commercial and industrial machinery and equipment repair and maintenance.....	55	1	7.6	1.6	-0.6	0.7	0.4	1.9
Machinery and equipment parts and supplies wholesaling <sup>2</sup> .....	57	1102	7.0	-0.1	0.7	1.5	-0.2	0.1
Building materials, paint, and hardware wholesaling.....	57	3	-7.8	0.5	0.1	-1.1	-1.5	-0.1
Metals, minerals, and ores wholesaling <sup>2</sup> .....	57	4	12.4	-2.5	4.6	10.5	3.4	2.5
Chemicals and allied products wholesaling <sup>2</sup> .....	57	5	0.9	-2.4	4.8	1.2	-5.8	11.6
Paper and plastics products wholesaling <sup>2</sup> .....	57	6	2.4	-1.0	0.6	-0.2	0.7	0.8
Food and alcohol wholesaling <sup>2</sup> .....	57	8	1.5	0.0	-0.7	2.4	-1.1	-1.6
Hardware and building materials and supplies retailing.....	58	D	7.7	3.2	0.8	0.0	-0.6	-1.4
Metal treatment services <sup>2</sup> .....	59	1	4.6	-0.3	0.5	-0.3	0.5	1.3
Stage 3 intermediate demand.....	ID5	3	-2.6	0.5	-0.6	-0.2	-0.4	0.0
Stage 3 intermediate demand goods.....	ID5	9311	-7.9	0.9	-1.8	-1.1	-1.6	-0.3
Slaughter cattle.....	01	31	12.0	1.6	0.2	-4.4	-3.2	1.3
Slaughter hogs.....	01	32	-37.6	-3.0	-5.1	-4.4	-18.8	-2.9
Slaughter poultry.....	01	4	0.4	6.3	-2.6	-0.6	4.3	-1.4
Raw milk.....	01	6	-16.6	5.2	-2.4	-1.4	-5.1	-3.1
Commercial electric power.....	05	42	1.0	0.5	0.2	1.5	1.1	-3.3
Industrial electric power.....	05	43	-0.8	0.3	0.6	1.6	1.1	-1.9
Gasoline.....	05	71	-13.1	6.1	-15.0	-4.0	1.6	-3.6
Jet fuel <sup>2</sup> .....	05	7203	-24.3	7.1	-3.2	-5.8	-12.2	-1.6
No. 2 diesel fuel.....	05	7303	-27.0	0.8	-11.8	-3.7	-9.3	-0.4
Finished lubricants <sup>2</sup> .....	05	76	0.4	-1.1	-0.2	0.2	0.7	0.3
Lubricating oil base stocks <sup>2</sup> .....	05	78	-12.0	-0.1	11.9	2.1	0.6	-12.1
Asphalt.....	05	8102	15.7	5.0	2.9	2.3	4.4	2.6
Basic inorganic chemicals <sup>2</sup> .....	06	13	-12.2	-0.2	-1.9	-0.1	-0.2	-0.5
Basic organic chemicals.....	06	14	-13.7	1.5	2.8	-2.5	-2.3	-4.4
Paints and allied products <sup>2</sup> .....	06	2	-0.8	-0.3	-1.2	0.1	0.2	0.0

See footnotes at end of table.

**Table 2. Producer price index percentage changes for selected commodity groupings by Final Demand-Intermediate Demand category, seasonally adjusted — Continued**  
 [January 2024]

Grouping	Commodity code		Unadjusted 12-month percent change <sup>1</sup>	Seasonally adjusted 1-month percent change <sup>1</sup>				
	Group code	Item code		Jan. 2023 to Jan. 2024 <sup>P</sup>	Aug. to Sept.	Sept. to Oct. <sup>P</sup>	Oct. to Nov. <sup>P</sup>	Nov. to Dec. <sup>P</sup>
Agricultural chemicals and chemical products.....	06	5	-17.1	-0.9	1.3	-0.7	1.6	0.3
Plastic resins and materials.....	06	6	-5.1	0.3	-2.3	1.8	1.1	0.6
Synthetic rubber <sup>2</sup> .....	07	1102	-7.0	1.1	2.4	0.2	-1.5	-1.5
Unsupported plastic film, sheet, and other shapes <sup>2</sup> .....	07	22	-5.5	-1.5	0.5	0.0	0.7	0.0
Paper <sup>2</sup> .....	09	13	-0.2	0.6	-0.5	-0.1	0.2	0.5
Paperboard <sup>2</sup> .....	09	14	-7.7	0.5	-0.4	-0.1	-1.5	0.4
Converted paper and paperboard products <sup>2</sup> .....	09	15	-2.0	0.0	-0.3	-0.2	0.0	-0.4
Commercial printing <sup>2</sup> .....	09	47	1.9	0.2	0.0	0.1	0.0	0.8
Foundry and forge shop products <sup>2</sup> .....	10	15	2.0	-0.1	-0.6	-0.2	0.9	1.0
Steel mill products <sup>2</sup> .....	10	17	4.4	-3.5	-2.5	-1.9	2.4	5.4
Nonferrous mill shapes <sup>2</sup> .....	10	25	-3.9	-0.5	-0.7	-0.2	0.2	-0.8
Nonferrous foundry shop products.....	10	28	3.0	0.1	0.4	-0.3	0.7	0.2
Metal containers <sup>2</sup> .....	10	3	-3.1	-0.2	-0.9	-0.5	0.0	0.3
Structural, architectural, and pre-engineered metal products.....	10	74	2.4	0.5	0.9	0.8	1.8	1.0
Bolts, nuts, screws, rivets, and washers <sup>2</sup> .....	10	81	9.0	2.9	-0.5	0.4	0.0	1.9
Other miscellaneous metal products <sup>2</sup> .....	10	89	1.7	0.0	0.2	0.1	0.0	0.5
General purpose machinery and equipment.....	11	4	4.4	0.5	0.5	0.1	0.3	-0.1
Electrical machinery and equipment.....	11	7	2.1	0.2	0.1	0.1	0.1	0.9
Construction sand, gravel, and crushed stone.....	13	21	8.1	0.4	0.5	0.5	0.5	3.3
Cement.....	13	22	8.2	0.6	0.9	0.6	0.8	1.2
Motor vehicle parts <sup>2</sup> .....	14	12	0.8	0.1	0.0	0.1	-0.2	0.0
Aircraft and aircraft equipment.....	14	2	4.5	1.2	0.1	0.2	0.1	0.3
Stage 3 intermediate demand services.....	ID5	9312	2.0	0.3	0.4	0.6	0.6	0.2
Rail transportation of freight and mail <sup>2</sup> .....	30	11	0.9	0.7	1.2	0.4	-0.1	0.9
Courier, messenger, and U.S. postal services.....	30	16	3.7	0.5	0.5	-0.3	0.3	0.3
Arrangement of freight and cargo <sup>2</sup> .....	31	31	-8.7	5.6	1.6	-0.3	12.3	-0.1
Freight forwarding <sup>2</sup> .....	31	3201	-0.9	0.0	0.0	0.0	0.0	-1.0
Warehousing, storage, and related services <sup>2</sup> .....	32	1	0.5	2.0	-0.3	-0.5	0.0	-0.1
Advertising space sales in periodicals, newspapers, directories, and mailing lists <sup>2</sup> .....	36	1	0.0	-0.4	-0.3	-0.2	0.0	0.3
Wired telephone services <sup>2</sup> .....	37	1	3.3	0.3	-0.2	0.1	0.0	-0.1
Bundled wired telecommunications access services <sup>2</sup> .....	37	5	1.5	-2.9	0.2	-0.2	1.9	2.7
Data processing and related services <sup>2</sup> .....	38	1	2.4	-0.2	0.2	0.3	0.3	0.4
Business loans (partial).....	39	11	3.8	-1.9	0.5	-1.2	-0.2	0.7
Deposit services (partial) <sup>2</sup> .....	39	2	15.6	4.3	0.8	2.7	1.9	1.2
Securities brokerage, dealing, investment advice, and related services <sup>2</sup> .....	40	1	11.5	-0.1	-1.9	0.1	2.9	0.7
Insurance.....	41	11	2.6	0.4	0.2	0.1	0.1	-0.4
Nonresidential real estate rents <sup>2</sup> .....	43	11	3.4	2.0	-3.0	1.4	1.1	1.6
Legal services.....	45	1	7.0	0.3	0.9	0.3	0.4	2.0
Accounting services (partial).....	45	2	4.9	1.1	-2.7	-0.7	0.3	1.2
Architectural and engineering services.....	45	3	2.0	0.2	0.8	0.0	0.1	-1.0
Management, scientific, and technical consulting services <sup>2</sup> .....	45	4	3.7	5.1	-3.6	2.1	0.9	0.1
Advertising agency services <sup>2</sup> .....	45	51	0.5	0.0	0.0	0.0	0.0	0.1
Staffing services.....	46	3	0.7	0.0	0.2	0.2	0.1	-0.1
Aircraft repair maintenance.....	55	4	8.8	3.7	0.3	0.5	0.2	0.0
Machinery and equipment parts and supplies wholesaling <sup>2</sup> .....	57	1102	7.0	-0.1	0.7	1.5	-0.2	0.1
Building materials, paint, and hardware wholesaling.....	57	3	-7.8	0.5	0.1	-1.1	-1.5	-0.1
Metals, minerals, and ores wholesaling <sup>2</sup> .....	57	4	12.4	-2.5	4.6	10.5	3.4	2.5
Chemicals and allied products wholesaling <sup>2</sup> .....	57	5	0.9	-2.4	4.8	1.2	-5.8	11.6
Paper and plastics products wholesaling <sup>2</sup> .....	57	6	2.4	-1.0	0.6	-0.2	0.7	0.8
Food wholesaling <sup>2</sup> .....	57	8101	1.5	0.0	-0.9	2.6	-1.3	-1.8
Metal treatment services <sup>2</sup> .....	59	1	4.6	-0.3	0.5	-0.3	0.5	1.3
Stage 2 intermediate demand.....	ID5	2	-3.8	1.2	-0.3	-0.9	-1.4	0.5
Stage 2 intermediate demand goods.....	ID5	9211	-11.9	3.0	-1.2	-2.4	-3.8	0.6
Corn.....	01	2202	-34.5	-5.3	-2.9	-3.5	-2.0	-6.5
Oilseeds.....	01	83	-16.9	1.9	-0.9	2.2	-3.8	-9.2
Prepared animal feeds.....	02	9	-7.9	0.0	-0.8	-0.2	-0.7	-2.4
Coal <sup>2</sup> .....	05	1	0.1	-3.4	2.7	2.7	-0.5	0.4
Natural gas <sup>2</sup> .....	05	31	-55.8	-2.6	1.2	9.9	-4.2	-2.4
Liquefied petroleum gas <sup>2</sup> .....	05	32	-13.0	9.7	-7.0	-5.7	-2.5	4.5
Crude petroleum <sup>2</sup> .....	05	61	-1.6	10.3	-3.4	-9.6	-10.8	6.1
No. 2 diesel fuel.....	05	7303	-27.0	0.8	-11.8	-3.7	-9.3	-0.4
Industrial chemicals.....	06	1	-13.4	1.2	1.9	-2.1	-1.9	-3.7
Plastic resins and materials.....	06	6	-5.1	0.3	-2.3	1.8	1.1	0.6
Plastic products <sup>2</sup> .....	07	2	-1.8	-0.3	0.0	0.1	0.2	0.4
Logs, bolts, timber, pulpwood, and wood chips <sup>2</sup> .....	08	5	-4.4	0.0	-0.1	-1.1	-0.3	0.2

See footnotes at end of table.

**Table 2. Producer price index percentage changes for selected commodity groupings by Final Demand-Intermediate Demand category, seasonally adjusted — Continued**  
 [January 2024]

Grouping	Commodity code		Unadjusted 12-month percent change <sup>1</sup>	Seasonally adjusted 1-month percent change <sup>1</sup>				
	Group code	Item code		Jan. 2023 to Jan. 2024 <sup>P</sup>	Aug. to Sept.	Sept. to Oct. <sup>P</sup>	Oct. to Nov. <sup>P</sup>	Nov. to Dec. <sup>P</sup>
Paper <sup>2</sup> .....	09	13	-0.2	0.6	-0.5	-0.1	0.2	0.5
Paperboard, excluding corrugated paperboard <sup>2</sup> .....	09	1411	-7.7	0.9	-0.7	0.0	-2.0	0.2
Commercial printing <sup>2</sup> .....	09	47	1.9	0.2	0.0	0.1	0.0	0.8
Iron and steel scrap.....	10	12	7.7	1.4	1.5	5.0	0.5	-6.2
Steel mill products <sup>2</sup> .....	10	17	4.4	-3.5	-2.5	-1.9	2.4	5.4
Nonferrous mill shapes <sup>2</sup> .....	10	25	-3.9	-0.5	-0.7	-0.2	0.2	-0.8
Electrical machinery and equipment.....	11	7	2.1	0.2	0.1	0.1	0.1	0.9
Electronic components and accessories.....	11	78	0.7	0.4	0.0	0.1	0.0	0.5
Stage 2 intermediate demand services.....	ID5	9212	2.7	-0.1	0.3	0.2	0.4	0.4
Rail transportation of freight and mail <sup>2</sup> .....	30	11	0.9	0.7	1.2	0.4	-0.1	0.9
Truck transportation of freight <sup>2</sup> .....	30	12	-7.3	1.6	0.1	-0.2	-1.4	-0.6
U.S. Postal Service <sup>2</sup> .....	30	1601	3.8	0.0	0.0	0.0	0.0	0.0
Courier and messenger services, except air.....	30	1602	4.4	0.6	0.4	0.0	0.5	0.1
Air mail and package delivery services, excluding by USPS.....	30	1603	2.5	1.0	1.3	-1.0	0.3	0.9
Pipeline transportation <sup>2</sup> .....	30	17	2.7	-0.2	-0.2	-0.1	0.0	0.1
Airline passenger services.....	30	22	-2.3	-2.2	1.2	-0.5	2.3	-0.5
Arrangement of freight and cargo <sup>2</sup> .....	31	31	-8.7	5.6	1.6	-0.3	12.3	-0.1
Television advertising time sales.....	36	21	-15.1	-3.5	0.6	6.3	1.7	-0.9
Wireless telecommunication services.....	37	2	1.1	0.1	0.1	0.1	0.1	0.1
Data processing and related services <sup>2</sup> .....	38	1	2.4	-0.2	0.2	0.3	0.3	0.4
Securities brokerage, dealing, investment advice, and related services <sup>2</sup> .....	40	1	11.5	-0.1	-1.9	0.1	2.9	0.7
Portfolio management <sup>2</sup> .....	40	2	7.2	-0.5	-3.0	-1.7	1.4	5.5
Investment banking <sup>2</sup> .....	40	31	8.1	2.9	-0.1	-0.7	-0.7	0.3
Insurance.....	41	11	2.6	0.4	0.2	0.1	0.1	-0.4
Commissions from sales of insurance <sup>2</sup> .....	42	11	-0.1	0.0	0.0	0.0	0.1	-0.1
Legal services.....	45	1	7.0	0.3	0.9	0.3	0.4	2.0
Accounting services (partial).....	45	2	4.9	1.1	-2.7	-0.7	0.3	1.2
Management, scientific, and technical consulting services <sup>2</sup> .....	45	4	3.7	5.1	-3.6	2.1	0.9	0.1
Advertising agency services <sup>2</sup> .....	45	51	0.5	0.0	0.0	0.0	0.0	0.1
Staffing services.....	46	3	0.7	0.0	0.2	0.2	0.1	-0.1
Security guard services <sup>2</sup> .....	48	1	11.6	-0.1	0.8	-0.2	2.4	2.8
Janitorial services <sup>2</sup> .....	49	1	-0.6	-2.4	0.1	0.4	0.0	0.6
Traveler accommodation services.....	53	1	2.1	0.9	-2.8	1.6	-6.0	4.7
Commercial and industrial machinery and equipment repair and maintenance.....	55	1	7.6	1.6	-0.6	0.7	0.4	1.9
Hardware and building materials and supplies retailing.....	58	D	7.7	3.2	0.8	0.0	-0.6	-1.4
Stage 1 intermediate demand.....	ID5	1	-0.7	0.3	-0.4	-0.1	-0.2	0.2
Stage 1 intermediate demand goods.....	ID5	9111	-4.7	0.3	-0.8	-0.7	-0.7	-0.3
Prepared animal feeds.....	02	9	-7.9	0.0	-0.8	-0.2	-0.7	-2.4
Commercial electric power.....	05	42	1.0	0.5	0.2	1.5	1.1	-3.3
Industrial electric power.....	05	43	-0.8	0.3	0.6	1.6	1.1	-1.9
Commercial natural gas.....	05	52	-24.7	-1.3	1.1	2.7	2.0	0.0
Industrial natural gas.....	05	53	-21.6	-1.9	-1.8	2.2	0.0	2.2
Gasoline.....	05	71	-13.1	6.1	-15.0	-4.0	1.6	-3.6
No. 2 diesel fuel.....	05	7303	-27.0	0.8	-11.8	-3.7	-9.3	-0.4
Industrial chemicals.....	06	1	-13.4	1.2	1.9	-2.1	-1.9	-3.7
Prepared paint <sup>2</sup> .....	06	21	-0.6	0.0	-0.4	0.0	0.0	0.3
Plastic construction products <sup>2</sup> .....	07	21	-2.9	0.2	0.0	0.0	-0.4	0.3
Recyclable paper <sup>2</sup> .....	09	12	74.4	9.6	10.8	4.0	1.9	8.2
Paper <sup>2</sup> .....	09	13	-0.2	0.6	-0.5	-0.1	0.2	0.5
Converted paper and paperboard products <sup>2</sup> .....	09	15	-2.0	0.0	-0.3	-0.2	0.0	-0.4
Iron and steel scrap.....	10	12	7.7	1.4	1.5	5.0	0.5	-6.2
Steel mill products <sup>2</sup> .....	10	17	4.4	-3.5	-2.5	-1.9	2.4	5.4
Primary nonferrous metals <sup>2</sup> .....	10	22	-2.2	1.9	-2.0	0.6	-1.0	0.6
Nonferrous scrap.....	10	23	-10.7	-0.6	-1.2	-0.7	2.1	-3.4
Nonferrous wire and cable <sup>2</sup> .....	10	26	-6.4	-1.5	-0.5	0.0	0.4	0.8
Fabricated structural metal products.....	10	7	2.4	0.5	0.7	0.5	1.1	0.5
General purpose machinery and equipment.....	11	4	4.4	0.5	0.5	0.1	0.3	-0.1
Construction sand, gravel, and crushed stone.....	13	21	8.1	0.4	0.5	0.5	0.5	3.3
Stage 1 intermediate demand services.....	ID5	9112	3.3	0.2	-0.1	0.6	0.2	0.7
Truck transportation of freight <sup>2</sup> .....	30	12	-7.3	1.6	0.1	-0.2	-1.4	-0.6
Airline passenger services.....	30	22	-2.3	-2.2	1.2	-0.5	2.3	-0.5
Advertising space sales in periodicals, newspapers, directories, and mailing lists <sup>2</sup> .....	36	1	0.0	-0.4	-0.3	-0.2	0.0	0.3
Business wired telecommunication services <sup>2</sup> .....	37	12	2.7	0.2	-0.5	0.2	-0.1	-0.5
Wireless telecommunication services.....	37	2	1.1	0.1	0.1	0.1	0.1	0.1

See footnotes at end of table.

**Table 2. Producer price index percentage changes for selected commodity groupings by Final Demand-Intermediate Demand category, seasonally adjusted — Continued**  
 [January 2024]

Grouping	Commodity code		Unadjusted 12-month percent change <sup>1</sup>	Seasonally adjusted 1-month percent change <sup>1</sup>				
	Group code	Item code		Jan. 2023 to Jan. 2024 <sup>p</sup>	Aug. to Sept.	Sept. to Oct. <sup>p</sup>	Oct. to Nov. <sup>p</sup>	Nov. to Dec. <sup>p</sup>
Bundled wired telecommunications access services <sup>2</sup> .....	37	5	1.5	-2.9	0.2	-0.2	1.9	2.7
Business loans (partial).....	39	11	3.8	-1.9	0.5	-1.2	-0.2	0.7
Deposit services (partial) <sup>2</sup> .....	39	2	15.6	4.3	0.8	2.7	1.9	1.2
Securities brokerage, dealing, investment advice, and related services <sup>2</sup> .....	40	1	11.5	-0.1	-1.9	0.1	2.9	0.7
Portfolio management <sup>2</sup> .....	40	2	7.2	-0.5	-3.0	-1.7	1.4	5.5
Investment banking <sup>2</sup> .....	40	3	8.1	2.9	-0.1	-0.7	-0.7	0.3
Insurance.....	41	11	2.6	0.4	0.2	0.1	0.1	-0.4
Nonresidential real estate rents <sup>2</sup> .....	43	11	3.4	2.0	-3.0	1.4	1.1	1.6
Architectural and engineering services.....	45	3	2.0	0.2	0.8	0.0	0.1	-1.0
Management consulting services <sup>2</sup> .....	45	41	3.7	5.1	-3.6	2.1	0.9	0.1
Waste collection.....	50	1	7.2	1.0	-0.2	0.9	-0.3	-0.1
Traveler accommodation services.....	53	11	2.1	0.9	-2.8	1.6	-6.0	4.7
Commercial and industrial machinery and equipment repair and maintenance.....	55	1	7.6	1.6	-0.6	0.7	0.4	1.9
Machinery and equipment parts and supplies wholesaling <sup>2</sup> .....	57	1102	7.0	-0.1	0.7	1.5	-0.2	0.1
Building materials, paint, and hardware wholesaling.....	57	3	-7.8	0.5	0.1	-1.1	-1.5	-0.1
Metals, minerals, and ores wholesaling <sup>2</sup> .....	57	4	12.4	-2.5	4.6	10.5	3.4	2.5
Chemicals and allied products wholesaling <sup>2</sup> .....	57	5	0.9	-2.4	4.8	1.2	-5.8	11.6
Paper and plastics products wholesaling <sup>2</sup> .....	57	6	2.4	-1.0	0.6	-0.2	0.7	0.8
Hardware and building materials and supplies retailing.....	58	D	7.7	3.2	0.8	0.0	-0.6	-1.4
Mining services <sup>2</sup> .....	60	1	1.5	0.8	-0.7	1.2	0.1	0.0

<sup>1</sup> All indexes are subject to revision for 4 months after their originally scheduled publication to incorporate late reports and corrections by survey respondents. In addition, seasonally adjusted indexes are subject to change for up to 5 years due to the recalculation of seasonal factors published each January.

<sup>2</sup> Seasonal tests did not indicate the presence of seasonality. Data shown is not seasonally adjusted.

<sup>3</sup> Trade indexes measure changes in margins received by wholesalers and retailers.

p Preliminary

"-" Data not available.

NOTE: The term "(partial)" denotes incomplete coverage of the index category.

**Table 3. Producer price indexes for Final Demand-Intermediate Demand groupings, seasonally adjusted**  
 [January 2024, Index base Nov. 2009=100, unless otherwise indicated]

Grouping	Other index base	Commodity code		Seasonally adjusted index <sup>1</sup>				
		Group code	Item code	Sept. 2023	Oct. 2023 <sup>p</sup>	Nov. 2023 <sup>p</sup>	Dec. 2023 <sup>p</sup>	Jan. 2024 <sup>p</sup>
<b>Final Demand</b>								
Final demand.....		FD	4	142.658	142.144	142.229	142.020	142.488
Final demand goods.....		FD	41	145.037	143.193	142.983	142.600	142.333
Final demand foods.....		FD	411	149.456	149.763	150.786	149.763	149.387
Finished consumer foods <sup>2</sup> .....	00/82	FD	4111	263.936	264.741	266.756	265.267	266.365
Finished consumer foods, crude.....	00/82	FD	41113	228.312	221.837	264.871	248.171	267.898
Finished consumer foods, processed.....	00/82	FD	41112	266.186	267.681	265.778	265.745	265.063
Government purchased foods.....		FD	4112	154.974	156.678	156.497	155.546	153.578
Foods for export.....		FD	4113	149.216	148.269	149.268	147.384	143.114
Final demand energy.....		FD	412	153.943	144.003	141.380	139.993	137.667
Finished consumer energy goods <sup>2</sup> .....	00/82	FD	4121	240.470	223.102	219.923	220.734	216.965
Government purchased energy.....		FD	4122	166.246	158.537	154.147	146.513	143.959
Energy for export.....		FD	4123	146.473	143.721	137.962	128.163	126.949
Final demand goods less foods and energy.....		FD	413	141.135	141.218	141.417	141.527	141.933
Finished goods less foods and energy <sup>2</sup> .....	00/82	FD	4131	248.345	248.574	249.063	249.172	250.161
Finished consumer goods less foods and energy.....	00/82	FD	41311	275.915	276.111	276.701	276.886	277.550
Nondurable consumer goods less foods and energy.....	00/82	FD	413111	358.014	358.802	359.621	360.112	361.124
Durable consumer goods.....	00/82	FD	413112	191.727	191.426	191.791	191.713	192.052
Private capital equipment.....	00/82	FD	41312	213.280	213.528	213.907	213.944	215.175
Private capital equipment for manufacturing industries.....	00/82	FD	413121	228.999	229.287	229.691	230.083	231.896
Private capital equipment for nonmanufacturing industries.....	00/82	FD	413122	208.579	208.815	209.186	209.119	210.177
Government purchased goods, excluding foods and energy.....		FD	4132	137.482	137.620	137.594	137.655	138.298
Government purchased goods excluding foods, energy, and capital equipment.....		FD	41321	145.662	145.831	145.616	145.670	145.837
Government purchased capital equipment.....		FD	41322	125.141	125.240	125.439	125.508	126.711
Goods for export, excluding foods and energy.....		FD	4133	137.186	137.168	137.296	137.501	137.545
Final demand services.....		FD	42	140.449	140.530	140.757	140.615	141.412
Final demand trade services <sup>3</sup> .....		FD	423	151.396	151.386	152.000	150.456	150.828
Trade of finished goods <sup>2</sup> .....		FD	4231	150.066	149.717	149.908	148.834	148.867
Trade of personal consumption goods.....		FD	42311	150.506	150.140	149.455	149.744	149.241
Trade of private capital equipment.....		FD	42312	146.415	146.142	150.209	143.112	145.519
Trade of government purchased goods.....		FD	4232	160.933	162.976	166.065	161.448	162.822
Trade of government purchased goods, excluding capital equipment.....		FD	42321	169.071	171.125	171.864	171.075	169.764
Trade of government purchased capital equipment.....		FD	42322	147.229	149.237	155.808	145.518	150.888
Trade of exports.....		FD	4233	160.244	162.682	166.369	161.535	164.748
Final demand transportation and warehousing services.....		FD	422	149.372	150.058	149.715	149.413	148.854
Transportation of passengers for final demand.....		FD	4221	132.680	134.290	133.584	136.600	135.977
Transportation of private passengers.....		FD	42211	132.687	134.294	133.589	136.600	135.978
Transportation of government passengers.....		FD	42212	132.492	134.084	133.387	136.371	135.754
Transportation of passengers for export.....		FD	42213	132.658	134.282	133.569	136.610	135.983
Transportation and warehousing of goods for final demand.....		FD	4222	155.064	155.386	155.187	153.591	153.060
Transportation and warehousing of finished goods <sup>2</sup> .....		FD	42221	153.064	153.327	153.143	151.387	150.770
Transportation and warehousing of personal consumption goods.....		FD	422211	153.601	153.869	153.678	151.961	151.360
Transportation and warehousing of private capital equipment.....		FD	422212	150.891	151.133	150.977	149.063	148.378
Transportation and warehousing of government purchased goods.....		FD	42222	153.791	153.977	153.866	152.455	151.989
Transportation and warehousing of exports.....		FD	42223	161.104	161.594	161.340	160.065	159.715
Final demand services less trade, transportation, and warehousing.....		FD	421	134.487	134.541	134.670	135.110	136.214
Finished services less trade, transportation, and warehousing <sup>2</sup> .....		FD	4211	134.690	134.846	134.990	135.349	136.465
Finished consumer services less trade, transportation, and warehousing.....		FD	42111	133.995	134.118	134.276	134.624	135.921
Private capital investment services less trade, transportation, and warehousing.....		FD	42112	141.239	141.652	141.691	142.143	141.846
Government purchased services less trade, transportation, and warehousing.....		FD	4212	125.533	125.048	125.238	125.835	126.789
Gov. purchased services less trade, transportation, and warehousing, excl. capital investment.....		FD	42121	126.176	125.617	125.876	126.474	127.485
Government purchased capital investment services less trade, transportation, and warehousing.....		FD	42122	110.303	110.896	110.083	110.647	110.746
Services for export less trade, transportation, and warehousing.....		FD	4213	142.631	141.823	141.667	143.097	144.224
Final demand construction.....		FD	43	174.862	174.378	174.130	174.249	174.752
Construction for private capital investment.....		FD	431	179.053	178.498	178.176	178.377	178.824
Construction for government.....		FD	432	167.044	166.707	166.616	166.560	167.184
<b>Final Demand Special Groupings</b>								
Final demand less exports.....	04/10	FD	49101	140.401	139.809	139.856	139.721	140.210
Final demand less government.....	04/10	FD	49102	140.613	140.124	140.229	140.087	140.560
Final demand less foods, food and nonalcoholic beverages for immediate consumption, and energy <sup>1</sup> .....	04/10	FD	49103	139.965	140.029	140.235	140.117	140.875
Final demand less foods and energy <sup>4</sup> .....	04/10	FD	49104	139.766	139.832	140.040	139.959	140.656
Final demand less foods and food and nonalcoholic beverages for immediate consumption <sup>4</sup> .....	04/10	FD	49105	140.448	139.855	139.875	139.675	140.227

See footnotes at end of table.

**Table 3. Producer price indexes for Final Demand-Intermediate Demand groupings, seasonally adjusted — Continued**

[January 2024, Index base Nov. 2009=100, unless otherwise indicated]

Grouping	Other index base	Commodity code		Seasonally adjusted index <sup>1</sup>				
		Group code	Item code	Sept. 2023	Oct. 2023 <sup>P</sup>	Nov. 2023 <sup>P</sup>	Dec. 2023 <sup>P</sup>	Jan. 2024 <sup>P</sup>
Final demand less foods <sup>4</sup> .....	04/10	FD	49106	140.163	139.611	139.642	139.481	139.989
Final demand less energy.....	04/10	FD	49107	140.063	140.143	140.395	140.262	140.898
Final demand less trade services.....	01/10	FD	49108	138.966	138.348	138.316	138.401	138.885
Final demand less distributive services <sup>5</sup> .....	01/10	FD	49109	138.442	137.784	137.759	137.915	138.443
Final demand goods less energy.....	01/10	FD	49111	141.445	141.576	141.952	141.815	142.048
Final demand goods less foods.....	04/10	FD	49112	140.973	138.721	138.259	138.018	137.779
Final demand services less trade services.....	04/10	FD	49113	134.702	134.814	134.898	135.265	136.204
Final demand distributive services <sup>5</sup> .....	04/10	FD	49114	148.903	148.945	149.421	147.900	148.125
Final demand goods plus final demand distributive services <sup>5</sup> .....	04/10	FD	49115	144.542	143.506	143.584	142.735	142.675
Final demand less foods, energy, and trade services <sup>4</sup> .....	08/13	FD	49116	128.885	128.966	129.064	129.337	130.071
Private and government purchased capital equipment.....	08/13	FD	49117	128.786	128.929	129.154	129.184	129.995
Private and government purchased capital investment services.....	08/13	FD	49118	132.768	132.969	134.490	132.002	132.771
Total private and government purchased capital investment.....	08/13	FD	49119	134.148	134.242	135.052	133.837	134.577
Total finished <sup>2</sup> .....	01/10	FD	49201	141.320	140.736	140.804	140.751	141.260
Total finished less foods, food and nonalcoholic beverages for immediate consumption, and energy <sup>2, 4</sup> .....	12/10	FD	49202	139.539	139.575	139.717	139.672	140.368
Total finished less foods and energy <sup>2, 4</sup> .....	01/10	FD	49203	140.387	140.432	140.576	140.531	141.227
Total finished less foods and food and nonalcoholic beverages for immediate consumption <sup>2, 4</sup> .....	12/10	FD	49204	139.547	138.900	138.908	138.898	139.399
Total finished less foods <sup>2, 4</sup> .....	01/10	FD	49205	140.949	140.309	140.319	140.309	140.812
Total finished less energy <sup>2</sup> .....	01/10	FD	49206	140.821	140.888	141.087	140.999	141.689
Finished goods <sup>2</sup> .....	00/82	FD	49207	259.117	254.755	254.598	254.566	254.340
Finished goods less energy <sup>2</sup> .....	00/82	FD	49208	251.676	252.060	252.959	252.636	253.651
Finished goods, excluding foods <sup>2, 4</sup> .....	00/82	FD	49209	257.179	251.468	250.739	251.090	250.516
Finished services <sup>2</sup> .....	01/10	FD	49210	138.883	138.927	139.058	138.987	139.711
Private capital investment services.....	04/10	FD	49211	142.991	143.136	144.666	142.169	142.860
Finished distributive services <sup>2, 5</sup> .....	04/10	FD	49212	147.336	147.067	147.209	146.075	146.030
Finished services less trade services <sup>2</sup> .....	04/10	FD	49213	134.519	134.709	134.817	135.119	136.099
Finished services less distributive services <sup>2, 5</sup> .....	04/10	FD	49214	133.765	133.952	134.077	134.492	135.562
Total private capital investment (goods, services, and construction).....	04/10	FD	49215	142.135	142.214	143.078	141.785	142.476
Finished goods plus finished distributive services <sup>2</sup> .....	04/10	FD	49216	145.832	144.443	144.466	143.910	143.823
Total exports.....	04/10	FD	49301	140.104	140.154	140.476	139.809	140.086
Goods for export.....	00/82	FD	49302	233.314	232.838	232.654	231.623	230.731
Services for export.....	04/10	FD	49303	150.293	150.799	151.725	150.946	152.335
Total government purchases.....	04/10	FD	49401	138.348	137.653	137.493	136.555	136.876
Government purchased goods.....	00/82	FD	49402	238.552	235.795	233.904	230.605	229.830
Government purchased services.....	04/10	FD	49403	133.256	133.259	133.872	133.605	134.518
Total government purchased capital investment (goods, services, construction).....	08/13	FD	49404	132.011	132.241	132.997	131.845	133.188
Government purchases, defense.....	05/15	FD	49405	125.622	125.196	125.000	123.066	123.504
Government purchases, non-defense.....	05/15	FD	49406	132.471	131.705	131.578	131.159	131.410
Personal consumption.....	01/10	FD	49501	141.051	140.316	140.202	140.433	140.900
Personal consumption goods (finished consumer goods).....	00/82	FD	49502	278.596	272.218	271.825	271.762	270.895
Personal consumption goods less energy.....	00/82	FD	49503	271.277	271.740	272.956	272.408	273.264
Personal consumption goods less foods.....	00/82	FD	49504	282.877	273.484	272.069	272.614	270.916
Personal consumption nondurable goods less foods.....	00/82	FD	49508	322.820	309.367	307.155	307.978	305.370
Personal consumption services.....	04/10	FD	49505	137.728	137.757	137.671	137.975	138.703
Personal consumption less trade services.....	04/10	FD	49506	138.099	137.275	137.304	137.519	138.226
Personal consumption less distributive services <sup>5</sup> .....	04/10	FD	49507	137.774	136.910	136.947	137.231	137.985
Personal consumption less foods and energy.....	04/14	FD	49510	129.066	129.100	129.057	129.321	129.964
Personal consumption less foods, energy, and trade services <sup>3</sup> .....	04/14	FD	49511	126.098	126.244	126.379	126.642	127.618
Personal consumption less foods, energy, and distributive services <sup>5</sup> .....	04/14	FD	49512	125.980	126.122	126.271	126.616	127.663
Personal consumption goods plus personal consumption distributive services <sup>5</sup> .....	08/13	FD	49509	134.747	133.101	132.723	132.730	132.290
<b>Intermediate Demand by Commodity Type</b>								
<b>Processed goods</b>								
Processed goods for intermediate demand.....	00/82	ID6	1	259.969	257.408	256.001	254.757	254.171
Materials and components for manufacturing.....	00/82	ID6	11	232.278	231.948	231.079	231.422	232.007
Materials for manufacturing.....		ID6	111	143.789	143.362	142.432	142.520	142.783
Materials for food manufacturing.....	00/82	ID6	1111	249.178	250.427	248.914	248.044	244.386
Materials for nondurable manufacturing.....	00/82	ID6	1112	261.948	262.966	261.230	259.615	257.845
Materials for durable manufacturing.....	00/82	ID6	1113	278.576	274.665	272.867	275.647	280.786
Components for manufacturing.....	00/82	ID6	112	188.022	188.226	188.351	188.892	189.577
Components for nondurable manufacturing.....		ID6	1121	145.116	145.138	145.106	145.598	145.892
Components for durable manufacturing.....		ID6	1122	132.750	132.900	132.994	133.372	133.867
Materials and components for construction.....	00/82	ID6	12	352.280	352.394	352.916	353.561	354.481
Materials for construction.....		ID6	121	168.369	167.689	167.771	167.807	168.309
Components for construction.....		ID6	122	178.379	179.057	179.464	180.020	180.433
Processed fuels and lubricants for intermediate demand.....	00/82	ID6	13	265.775	254.259	249.603	242.700	238.622
Processed fuels and lubricants to manufacturing industries.....	00/82	ID6	131	262.911	262.944	260.733	255.656	250.032

See footnotes at end of table.

**Table 3. Producer price indexes for Final Demand-Intermediate Demand groupings, seasonally adjusted — Continued**

[January 2024, Index base Nov. 2009=100, unless otherwise indicated]

Grouping	Other index base	Commodity code		Seasonally adjusted index <sup>1</sup>				
		Group code	Item code	Sept. 2023	Oct. 2023 <sup>P</sup>	Nov. 2023 <sup>P</sup>	Dec. 2023 <sup>P</sup>	Jan. 2024 <sup>P</sup>
Processed fuels and lubricants to nonmanufacturing industries.....	00/82	ID6	132	266.995	251.816	246.382	238.894	235.300
Containers for intermediate demand.....	00/82	ID6	14	306.243	305.747	304.712	304.810	304.296
Supplies for intermediate demand.....	00/82	ID6	15	251.270	250.963	250.675	250.418	250.027
Supplies to manufacturing industries.....	00/82	ID6	151	245.547	245.455	245.335	245.598	246.744
Supplies to nonmanufacturing industries.....	00/82	ID6	152	250.165	249.826	249.515	249.179	248.553
Supplies to nonmanufacturing industries, feeds.....	00/82	ID6	1521	239.228	234.491	234.789	230.899	225.356
Supplies to nonmanufacturing industries, other than feeds.....	00/82	ID6	1522	253.599	253.831	253.438	253.564	253.578
<b>Unprocessed goods</b>								
Unprocessed goods for intermediate demand.....	00/82	ID6	2	260.916	256.642	251.263	240.187	240.495
Unprocessed foodstuffs and feedstuffs.....	00/82	ID6	21	224.899	220.155	219.195	211.988	207.367
Unprocessed nonfood materials.....	00/82	ID6	22	275.770	272.026	263.658	250.243	254.135
Unprocessed nonfood materials except fuel.....	00/82	ID6	221	352.655	346.013	328.626	310.538	317.394
Unprocessed nonfood materials except fuel to manufacturing industries.....	00/82	ID6	2211	327.113	320.602	303.647	286.018	292.181
Unprocessed nonfood materials except fuel to nonmanufacturing industries.....	00/82	ID6	2212	354.255	355.722	357.413	359.003	370.419
Unprocessed fuel.....	00/82	ID6	222	117.228	119.143	128.225	124.285	122.388
Unprocessed fuel to manufacturing industries.....	00/82	ID6	2221	213.012	218.249	226.375	224.054	224.124
Unprocessed fuel to nonmanufacturing industries.....	00/82	ID6	2222	115.174	116.957	126.351	122.207	120.146
<b>Services</b>								
Services for intermediate demand.....		ID6	3	146.741	146.667	147.370	147.927	148.684
Trade services for intermediate demand <sup>5</sup> .....		ID6	33	171.689	174.173	176.522	176.053	176.301
Trade services for manufacturing industries.....	12/12	ID6	331	155.792	157.997	161.242	160.439	162.231
Trade services for nonmanufacturing industries.....	12/12	ID6	332	153.799	156.072	157.115	157.055	155.781
Transportation and warehousing services for intermediate demand.....		ID6	32	155.510	156.199	155.977	157.161	156.997
Transportation of passengers for intermediate demand.....		ID6	321	132.557	134.148	133.451	136.434	135.817
Transportation of passengers for manufacturing industries.....		ID6	3211	132.637	134.260	133.547	136.586	135.959
Transportation of passengers for nonmanufacturing industries.....		ID6	3212	132.608	134.196	133.500	136.477	135.861
Transportation and warehousing of goods for intermediate demand.....		ID6	322	157.979	158.585	158.407	159.425	159.303
Transportation and warehousing of goods for manufacturing industries.....	12/12	ID6	3221	130.682	130.960	131.108	130.203	130.036
Transportation and warehousing of goods for nonmanufacturing industries.....	12/12	ID6	3222	141.295	141.902	141.657	143.075	142.986
Services less trade, transportation, and warehousing for intermediate demand.....		ID6	31	138.378	137.620	138.135	138.791	139.817
Services less trade, transportation, and warehousing for manufacturing industries.....		ID6	311	129.111	129.512	129.591	130.163	132.293
Services less trade, transportation, and warehousing for nonmanufacturing industries.....		ID6	312	138.676	137.878	138.408	139.066	140.054
<b>Construction</b>								
Construction for intermediate demand.....		ID6	4	145.826	145.907	145.964	146.010	146.550
<b>Intermediate Demand by Commodity Type Special Groupings</b>								
Processed materials less foods and feeds.....	00/82	ID6	9111	261.486	258.706	257.268	256.051	255.785
Processed foods and feeds.....	00/82	ID6	9112	245.383	244.966	243.854	242.354	238.668
Processed energy goods.....	00/82	ID6	9113	267.008	255.444	250.768	243.834	239.736
Processed materials less energy.....	00/82	ID6	9118	255.100	254.810	254.233	254.419	254.714
Processed materials less foods and energy.....	00/82	ID6	9115	255.860	255.588	255.081	255.486	256.298
Intermediate distributive services <sup>6</sup> .....	04/10	ID6	9116	163.289	164.923	166.142	166.325	166.409
Processed goods plus intermediate distributive services.....	04/10	ID6	9117	147.244	146.670	146.440	145.996	145.786
Unprocessed materials less agricultural products.....	00/82	ID6	9211	282.364	278.925	270.184	255.435	261.018
Unprocessed energy materials <sup>7</sup> .....	00/82	ID6	9212	219.870	215.161	203.624	186.164	193.238
Unprocessed materials less energy.....	00/82	ID6	9213	277.002	273.375	273.454	268.559	263.172
Unprocessed nonfood materials less energy <sup>8</sup> .....	00/82	ID6	9216	432.037	431.982	435.305	437.803	430.179
<b>Intermediate Demand by Production Flow</b>								
<b>Stage 4 Intermediate Demand</b>								
Stage 4 intermediate demand.....		ID5	4	149.267	148.766	149.081	149.347	149.888
Inputs to stage 4 goods producers.....		ID5	41	145.598	145.646	146.085	145.863	146.119
Goods.....		ID5	411	139.034	138.705	138.510	138.367	138.448
Foods.....		ID5	4111	146.076	143.972	144.645	143.907	141.187
Energy.....		ID5	4112	155.243	161.768	150.872	142.533	139.826
Goods excluding foods and energy.....		ID5	4113	137.914	137.794	137.564	137.588	138.124
Services.....		ID5	412	167.447	168.751	171.300	170.814	171.655
Trade services.....		ID5	4123	178.869	180.554	184.051	183.230	184.302
Transportation and warehousing services.....		ID5	4122	135.333	136.358	136.631	136.432	136.479
Transportation of passengers.....		ID5	41221	132.657	134.281	133.568	136.609	135.982
Transportation and warehousing of goods.....		ID5	41222	144.819	145.795	146.279	145.431	145.613
Services less trade, transportation, and warehousing.....		ID5	4121	131.063	131.262	131.615	132.031	132.392
Inputs to stage 4 services producers.....		ID5	42	147.089	146.381	146.678	147.204	148.016

See footnotes at end of table.



**Table 3. Producer price indexes for Final Demand-Intermediate Demand groupings, seasonally adjusted — Continued**

[January 2024, Index base Nov. 2009=100, unless otherwise indicated]

Grouping	Other index base	Commodity code		Seasonally adjusted index <sup>1</sup>				
		Group code	Item code	Sept. 2023	Oct. 2023 <sup>P</sup>	Nov. 2023 <sup>P</sup>	Dec. 2023 <sup>P</sup>	Jan. 2024 <sup>P</sup>
Goods.....		ID5	421	147.364	146.795	146.775	146.726	145.576
Foods.....		ID5	4211	148.826	149.302	147.705	146.651	145.039
Energy.....		ID5	4212	145.124	142.973	143.500	143.335	140.043
Goods excluding foods and energy.....		ID5	4213	147.352	147.389	147.536	147.867	148.122
Services.....		ID5	422	146.777	146.024	146.426	147.144	148.609
Trade services.....		ID5	4223	161.381	163.299	164.838	163.280	164.749
Transportation and warehousing services.....		ID5	4222	151.086	151.609	151.251	152.334	152.243
Transportation of passengers.....		ID5	42221	132.166	133.774	133.068	136.081	135.459
Transportation and warehousing of goods.....		ID5	42222	154.929	155.270	154.970	155.730	155.729
Services less trade, transportation, and warehousing.....		ID5	4221	143.716	142.551	142.907	143.824	145.441
Construction.....		ID5	423	145.826	145.907	145.964	146.010	146.550
Inputs to stage 4 construction producers.....		ID5	43	164.011	163.152	163.264	163.526	163.560
Goods.....		ID5	431	169.113	167.369	167.119	167.486	167.762
Energy.....		ID5	4312	175.066	155.575	150.065	148.584	144.776
Goods excluding foods and energy.....		ID5	4313	172.389	172.390	172.663	173.225	173.918
Services.....		ID5	432	150.953	152.295	153.307	153.306	152.741
Trade services.....		ID5	4323	168.520	171.004	173.624	174.165	173.701
Transportation and warehousing services.....		ID5	4322	147.213	147.697	147.622	145.967	145.456
Transportation of passengers.....		ID5	43221	138.287	139.977	139.235	142.399	141.746
Transportation and warehousing of goods.....		ID5	43222	148.210	148.668	148.608	146.828	146.318
Services less trade, transportation, and warehousing.....		ID5	4321	131.984	132.648	132.691	132.865	132.216
<b>Stage 3 Intermediate Demand</b>								
Stage 3 intermediate demand.....		ID5	3	147.174	146.272	145.991	145.397	145.421
Inputs to stage 3 goods producers.....		ID5	31	154.748	153.915	153.541	152.523	152.702
Goods.....		ID5	311	150.509	149.013	147.940	146.811	146.676
Foods.....		ID5	3111	166.324	162.686	160.141	155.699	152.178
Energy.....		ID5	3112	145.294	146.934	142.053	137.391	137.527
Goods excluding foods and energy.....		ID5	3113	148.277	147.456	147.216	147.704	149.025
Services.....		ID5	312	160.685	162.466	164.824	164.306	165.684
Trade services.....		ID5	3123	165.518	168.394	172.851	172.475	175.249
Transportation and warehousing services.....		ID5	3122	149.706	150.119	150.057	148.895	148.557
Transportation of passengers.....		ID5	31221	141.244	142.972	142.213	145.449	144.782
Transportation and warehousing of goods.....		ID5	31222	149.962	150.292	150.270	148.861	148.542
Services less trade, transportation, and warehousing.....		ID5	3121	135.009	135.643	135.626	135.938	135.959
Inputs to stage 3 services producers.....		ID5	32	140.400	139.439	139.211	138.914	138.836
Goods.....		ID5	321	136.779	131.033	128.013	122.491	121.376
Foods.....		ID5	3211	156.199	156.234	157.238	156.174	155.307
Energy.....		ID5	3212	143.698	134.255	129.280	120.238	118.142
Goods excluding foods and energy.....		ID5	3213	135.775	135.765	135.757	135.708	136.172
Services.....		ID5	322	141.192	141.480	141.984	143.060	143.247
Trade services.....		ID5	3223	197.253	200.011	200.092	201.056	197.753
Transportation and warehousing services.....		ID5	3222	162.449	163.380	163.006	165.650	165.447
Transportation of passengers.....		ID5	32221	104.229	104.295	104.350	104.579	104.450
Transportation and warehousing of goods.....		ID5	32222	162.951	163.887	163.510	166.167	165.964
Services less trade, transportation, and warehousing.....		ID5	3221	132.486	132.451	133.223	133.880	134.382
Construction.....		ID5	323	145.826	145.907	145.964	146.010	146.550
Inputs to stage 3 construction producers.....		ID5	33	141.706	141.580	142.093	142.235	141.817
Goods.....		ID5	331	134.575	133.486	133.481	133.744	134.181
Goods excluding foods and energy.....		ID5	3313	171.481	170.093	170.086	170.422	170.979
Services.....		ID5	332	168.993	169.984	171.178	171.195	169.712
Trade services.....		ID5	3323	174.036	175.081	176.421	176.399	174.644
Transportation and warehousing services.....		ID5	3322	115.270	115.812	116.528	116.410	116.822
Transportation and warehousing of goods.....		ID5	33222	121.672	122.244	122.999	122.876	123.310
Services less trade, transportation, and warehousing.....		ID5	3321	126.013	126.492	125.978	126.582	127.686
<b>Stage 2 Intermediate Demand</b>								
Stage 2 intermediate demand.....		ID5	2	137.233	136.804	135.553	133.674	134.321
Inputs to stage 2 goods producers.....		ID5	21	127.370	126.388	124.189	120.339	121.097
Goods.....		ID5	211	124.385	122.804	119.543	114.466	115.340
Foods.....		ID5	2111	160.075	158.128	159.016	155.434	148.338
Energy.....		ID5	2112	97.735	95.339	90.167	82.677	85.837
Goods excluding foods and energy.....		ID5	2113	142.186	142.375	141.983	141.592	140.250
Services.....		ID5	212	149.792	150.671	151.719	151.458	151.911
Trade services.....		ID5	2123	167.239	168.995	171.661	170.105	170.072
Transportation and warehousing services.....		ID5	2122	168.132	168.682	169.063	169.646	170.223
Transportation of passengers.....		ID5	21221	133.181	134.736	134.058	136.977	136.370
Transportation and warehousing of goods.....		ID5	21222	170.148	170.645	171.079	171.548	172.184
Services less trade, transportation, and warehousing.....		ID5	2121	136.636	136.962	136.961	137.332	138.305
Construction.....		ID5	213	145.826	145.907	145.964	146.010	146.550

See footnotes at end of table.

**Table 3. Producer price indexes for Final Demand-Intermediate Demand groupings, seasonally adjusted — Continued**  
 [January 2024, Index base Nov. 2009=100, unless otherwise indicated]

Grouping	Other index base	Commodity code		Seasonally adjusted index <sup>1</sup>				
		Group code	Item code	Sept. 2023	Oct. 2023 <sup>P</sup>	Nov. 2023 <sup>P</sup>	Dec. 2023 <sup>P</sup>	Jan. 2024 <sup>P</sup>
Inputs to stage 2 services producers.....		ID5	22	144.681	144.949	144.915	145.539	146.027
Goods.....		ID5	221	145.180	144.739	144.247	143.782	143.187
Foods.....		ID5	2211	112.921	112.145	114.103	113.555	112.277
Energy.....		ID5	2212	168.480	155.648	151.698	147.269	146.808
Goods excluding foods and energy.....		ID5	2213	144.388	144.766	144.469	144.264	143.669
Services.....		ID5	222	144.174	144.532	144.551	145.320	145.939
Trade services.....		ID5	2223	182.648	192.265	189.822	192.533	186.162
Transportation and warehousing services.....		ID5	2222	141.968	143.182	142.918	149.290	148.505
Transportation of passengers.....		ID5	22221	133.094	134.711	134.001	137.031	136.405
Transportation and warehousing of goods.....		ID5	22222	144.160	145.288	145.106	152.128	151.311
Services less trade, transportation, and warehousing.....		ID5	2221	143.401	143.269	143.424	143.695	144.746
Construction.....		ID5	223	145.826	145.907	145.964	146.010	146.550
<b>Stage 1 Intermediate Demand</b>								
Stage 1 intermediate demand.....		ID5	1	146.400	145.766	145.678	145.358	145.674
Inputs to stage 1 goods producers.....		ID5	11	143.807	144.098	143.626	142.958	143.135
Goods.....		ID5	111	142.266	141.987	140.488	139.807	139.201
Foods.....		ID5	1111	146.247	143.852	142.452	140.624	135.359
Energy.....		ID5	1112	132.285	131.768	127.824	123.551	122.778
Goods excluding foods and energy.....		ID5	1113	147.644	147.775	146.810	147.172	147.383
Services.....		ID5	112	151.898	153.840	156.316	155.667	158.107
Trade services.....		ID5	1123	163.958	167.968	172.024	170.500	174.860
Transportation and warehousing services.....		ID5	1122	158.594	157.841	158.897	159.392	158.525
Transportation of passengers.....		ID5	11221	132.632	134.256	133.542	136.583	135.956
Transportation and warehousing of goods.....		ID5	11222	163.226	161.891	163.375	163.232	162.315
Services less trade, transportation, and warehousing.....		ID5	1121	110.911	110.412	110.765	111.120	111.302
Construction.....		ID5	113	145.826	145.907	145.964	146.010	146.550
Inputs to stage 1 services producers.....		ID5	12	146.663	145.438	145.547	145.495	145.985
Goods.....		ID5	121	149.574	147.100	146.196	144.675	144.052
Foods.....		ID5	1211	130.764	127.236	127.941	127.965	127.771
Energy.....		ID5	1212	167.013	158.485	155.536	149.988	147.114
Goods excluding foods and energy.....		ID5	1213	149.676	149.931	149.933	150.218	150.622
Services.....		ID5	122	144.762	144.069	144.603	145.169	146.125
Trade services.....		ID5	1223	174.320	176.947	177.784	178.951	176.806
Transportation and warehousing services.....		ID5	1222	143.165	143.978	143.561	144.489	144.258
Transportation of passengers.....		ID5	12221	132.553	134.176	133.463	136.502	135.875
Transportation and warehousing of goods.....		ID5	12222	164.061	164.535	164.229	164.144	164.098
Services less trade, transportation, and warehousing.....		ID5	1221	140.399	139.173	139.806	140.255	141.674
Construction.....		ID5	123	145.826	145.907	145.964	146.010	146.550
Inputs to stage 1 construction producers.....		ID5	13	164.039	163.525	163.593	162.969	162.884
Goods.....		ID5	131	165.916	164.782	164.431	163.666	164.141
Energy.....		ID5	1312	155.614	143.277	137.291	126.183	124.423
Goods excluding foods and energy.....		ID5	1313	169.865	170.064	170.388	170.860	171.612
Services.....		ID5	132	160.481	161.485	162.581	162.297	160.838
Trade services.....		ID5	1323	170.084	171.472	173.067	173.314	171.501
Transportation and warehousing services.....		ID5	1322	122.194	122.257	122.079	120.388	119.667
Transportation and warehousing of goods.....		ID5	13222	126.394	126.459	126.275	124.526	123.780
Services less trade, transportation, and warehousing.....		ID5	1321	139.101	138.855	138.966	139.535	141.004
<b>Intermediate Demand by Production Flow Special Groupings</b>								
Total goods inputs to stage 4 intermediate demand.....	04/10	ID5	9411	144.517	143.841	143.691	143.681	143.436
Total services inputs to stage 4 intermediate demand.....	04/10	ID5	9412	149.878	149.552	150.284	150.789	152.022
Total construction inputs to stage 4 intermediate demand.....	04/10	ID5	9413	144.618	144.698	144.755	144.801	145.336
Total foods inputs to stage 4 intermediate demand.....	04/10	ID5	9414	144.030	143.056	142.761	141.906	139.712
Total energy goods inputs to stage 4 intermediate demand.....	04/10	ID5	9415	137.853	133.620	132.866	132.267	129.190
Total goods less foods and energy inputs to stage 4 intermediate demand.....	04/10	ID5	9416	146.644	146.586	146.554	146.767	147.278
Total goods inputs to stage 3 intermediate demand.....	04/10	ID5	9311	139.644	137.192	135.711	133.585	133.226
Total services inputs to stage 3 intermediate demand.....	04/10	ID5	9312	143.585	144.120	144.929	145.728	146.091
Total construction inputs to stage 3 intermediate demand.....	04/10	ID5	9313	144.618	144.698	144.755	144.801	145.336
Total foods inputs to stage 3 intermediate demand.....	04/10	ID5	9314	147.960	144.750	142.512	138.585	135.471
Total energy goods inputs to stage 3 intermediate demand.....	04/10	ID5	9315	141.183	133.566	128.701	120.482	118.757
Total goods less foods and energy inputs to stage 3 intermediate demand.....	04/10	ID5	9316	140.505	139.832	139.641	140.024	141.146
Total goods inputs to stage 2 intermediate demand.....	04/10	ID5	9211	120.445	119.054	116.226	111.852	112.538
Total services inputs to stage 2 intermediate demand.....	04/10	ID5	9212	145.981	146.464	146.726	147.254	147.836
Total construction inputs to stage 2 intermediate demand.....	04/10	ID5	9213	144.618	144.698	144.755	144.801	145.336
Total foods inputs to stage 2 intermediate demand.....	04/10	ID5	9214	160.388	158.447	159.358	155.802	148.755
Total energy goods inputs to stage 2 intermediate demand.....	04/10	ID5	9215	96.482	94.020	88.970	81.670	84.724
Total goods less foods and energy inputs to stage 2 intermediate demand.....	04/10	ID5	9216	134.558	134.778	134.429	134.101	133.000
Total goods inputs to stage 1 intermediate demand.....	04/10	ID5	9111	132.124	131.095	130.112	129.244	128.862

See footnotes at end of table.

**Table 3. Producer price indexes for Final Demand-Intermediate Demand groupings, seasonally adjusted — Continued**

[January 2024, Index base Nov. 2009=100, unless otherwise indicated]

Grouping	Other index base	Commodity code		Seasonally adjusted index <sup>1</sup>				
		Group code	Item code	Sept. 2023	Oct. 2023 <sup>p</sup>	Nov. 2023 <sup>p</sup>	Dec. 2023 <sup>p</sup>	Jan. 2024 <sup>p</sup>
Total services inputs to stage 1 intermediate demand.....	04/10	ID5	9112	146.258	146.131	147.031	147.331	148.380
Total construction inputs to stage 1 intermediate demand.....	04/10	ID5	9117	144.618	144.698	144.755	144.801	145.336
Total foods inputs to stage 1 intermediate demand.....	04/10	ID5	9114	137.176	134.897	133.630	131.953	127.120
Total energy goods inputs to stage 1 intermediate demand.....	04/10	ID5	9115	146.570	141.180	137.684	132.362	130.511
Total goods less foods and energy inputs to stage 1 intermediate demand.....	04/10	ID5	9116	126.712	126.864	126.530	126.830	127.147

<sup>1</sup> All indexes are subject to revision for 4 months after their originally scheduled publication to incorporate late reports and corrections by survey respondents. In addition, seasonally adjusted indexes are subject to change for up to 5 years due to the recalculation of seasonal factors published each January.

<sup>2</sup> PPI defines Total finished as including only the personal consumption and private capital investment portions of final demand.

<sup>3</sup> Trade indexes measure changes in margins received by wholesalers and retailers.

<sup>4</sup> The PPI definition of foods does not include food and beverages for immediate consumption. PPI defines food and beverages for immediate consumption as the service of preparing meals, snacks, and beverages to customer order for immediate on-premises and off-premises consumption.

<sup>5</sup> Distributive services include transportation, warehousing, and trade of goods.

<sup>6</sup> Includes intermediate trade, transportation, and warehousing services.

<sup>7</sup> Includes crude petroleum.

<sup>8</sup> Excludes crude petroleum.

p Preliminary

"/" Data not available.