

**Transmission of material in this release is embargoed until 8:30 a.m. (EDT) Tuesday, August 9, 2011**

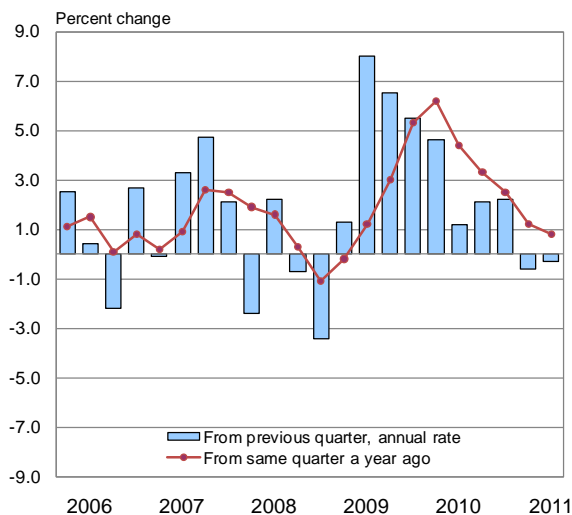
USDL-11-1185

Technical information: (202) 691-5606 • dprweb@bls.gov • www.bls.gov/lpc  
Media contact: (202) 691-5902 • PressOffice@bls.gov

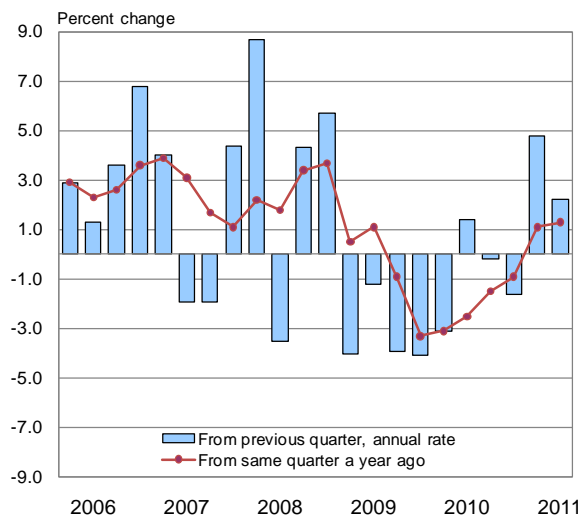
**PRODUCTIVITY AND COSTS**  
Second Quarter 2011, Preliminary

**Nonfarm business sector labor productivity** decreased at a 0.3 percent annual rate during the second quarter of 2011, the U.S. Bureau of Labor Statistics reported today, with output and hours worked rising 1.8 percent and 2.0 percent, respectively. (All quarterly percent changes in this release are seasonally adjusted annual rates.) From the second quarter of 2010 to the second quarter of 2011, output increased 2.5 percent while hours rose 1.6 percent, yielding an increase in productivity of 0.8 percent. (See chart 1, tables A and 2.)

**Chart 1. Output per hour, nonfarm business, all persons, 2006Q1 – 2011Q2**



**Chart 2. Unit labor costs, nonfarm business, all persons, 2006Q1 – 2011Q2**



Labor productivity, or output per hour, is calculated by dividing an index of real output by an index of hours worked of all persons, including employees, proprietors, and unpaid family workers.

**Unit labor costs in nonfarm businesses** rose 2.2 percent in the second quarter of 2011, because hourly compensation increased 1.9 percent while productivity decreased 0.3 percent. Over the last four quarters, hourly compensation increased more than output per hour, and unit labor costs rose 1.3 percent. (See chart 2, tables A and 2.)

BLS defines unit labor costs as the ratio of hourly compensation to labor productivity; increases in hourly compensation tend to increase unit labor costs and increases in output per hour tend to reduce them.

Data in this release reflect the regular multi-year revision to the National Income and Product Accounts (NIPA) released by the Bureau of Economic Analysis of the U.S. Department of Commerce on July 29, 2011. See Revised Measures (page 2).

**Manufacturing sector productivity** fell 2.0 percent in the second quarter of 2011, as output rose 0.6 percent and hours increased 2.6 percent. Over the last four quarters, manufacturing productivity increased 2.3 percent. **Unit labor costs in manufacturing** increased 4.4 percent in the second quarter of 2011 and were unchanged (0.0 percent) over the last four quarters. (See tables A and 3.)

Productivity fell 3.5 percent in the durable goods sector in the second quarter of 2011 as a 5.1 percent increase in hours outpaced a 1.4 percent increase in output. In contrast, nondurable goods manufacturing productivity increased 1.2 percent as hours decreased faster than output. (See tables A, 4 and 5.)

The data sources and methods used in the preparation of the manufacturing output series differ from those used in preparing the business and nonfarm business output series, and these measures are not directly comparable. See Technical Notes for further information on data sources. (See page 6.)

**Nonfinancial corporate sector** productivity increased 1.4 percent in the first quarter of 2011 as output and hours rose 3.6 percent and 2.1 percent, respectively. (See tables D and 6.)

### Revised Measures

Measures of output for the business, nonfarm business, and nonfinancial corporate (NFC) sectors, and compensation for all sectors incorporate the revised National Income and Product Accounts (NIPA) data released on July 29 by the Bureau of Economic Analysis, U.S. Department of Commerce. As a result, output and related series, including productivity and unit labor costs, were revised back to 1947 for the business and nonfarm business sectors, and back to 2000 for the NFC sector. Hours and related measures were revised back to 2002 for the business and nonfarm business sectors, and back to 1997 for nonfinancial corporations. These revisions were due to the incorporation of 2007 Economic Census final data on employment, as well as revised NIPA data on compensation of all employees and employment in government enterprises.

Table B presents previous and revised productivity and related measures for the nonfarm business, business, and manufacturing sectors for the first quarter of 2011 and table C presents annual data for nonfarm business and total manufacturing from 2008 to 2010. Table D presents revised and previous measures for nonfinancial corporations for the first quarter of 2011, in addition to annual data from 2008 to 2010. Revised quarterly and annual series for recent years appear in tables 1-6. All index measures in the business, nonfarm business, and NFC sectors show historical revisions because the 2005 base year values were revised; resulting revisions to percent changes are small. The annual indexes appear in appendix tables 1-3. Full historical annual and quarterly measures can be found on the productivity and costs home page <http://www.bls.gov/lpc/#data>.

**In the first quarter of 2011, nonfarm business** productivity declined 0.6 percent, rather than increasing 1.8 percent, reflecting a downward revision of 2.3 percentage points to output. Hourly compensation increased 4.2 percent in the first quarter, a larger gain than reported June 2. Consequently, unit labor costs were revised upward to 4.8 percent. **In the manufacturing sector,** productivity growth in the first quarter remained at 4.2 percent, due to offsetting upward revisions to output and hours. Unit labor costs declined 1.1 percent rather than 1.4 percent as reported June 2.

For the year **2010, nonfarm business** productivity growth was revised up to 4.1 percent from the 3.9 percent increase reported June 2, the result of a larger upward revision to output than hours. (See table C.) Unit labor costs declined 2.0 percent—the largest decline in the annual series which begins in 1948. **In manufacturing,** productivity growth was unchanged at 5.9 percent. Unit labor costs fell 4.0 percent, the largest decline in the series which extends back to 1988.

For the year **2009, nonfarm business** productivity growth was revised down to 2.3 percent from the previous estimate of 3.7 percent due to a downward revision in output. (See table C.) Unit labor costs declined 0.7 percent, a smaller decline than reported June 2. **Manufacturing** productivity declined 0.4 percent, as reported previously. The 4.9 percent increase in unit labor costs was less than the 6.1 percent increase published June 2, due to a downward revision to hourly compensation.

For the year **2008, nonfarm business** productivity was revised down to 0.6 percent from 1.0 percent as output was revised downward. Unit labor costs were revised up to 2.8 percent. **In manufacturing,** productivity, hours and output changed at the same rates reported previously. Unit labor costs were revised upward to 4.7 percent.

Nonfarm business productivity increased at an average annual rate of 2.5 percent from 2000 to 2010 rather than the 2.7 percent rate reported June 2. Manufacturing productivity grew at an annual average rate of 3.2 percent from 2000 to 2010, as previously reported.

**In the nonfinancial corporate sector,** first-quarter 2011 productivity growth was revised down to 1.4 percent from the preliminary estimate of 4.1 percent. For the year **2010,** productivity was revised down to 5.3 percent due to a downward revision in output. (See tables D and 6.) In **2009** productivity was revised down to 1.6 percent as the downward revision to output was greater than the downward revision to hours. Unit labor costs were unchanged by revisions in 2010 and 2009 because downward revisions to productivity were offset by downward revisions to hourly compensation. (See table 6 and appendix table 3.)

---

**The revised Productivity and Costs press release for second-quarter 2011 is scheduled to be released on Thursday, September 1, 2011 at 8:30 a.m. (EDT).**

**Table A. Preliminary second-quarter 2011 measures: percent change from previous quarter, annual rate (Q to Q) and from same quarter a year ago (Y to Y)**

Sector	Nonfarm Business		Business		Manufacturing		Durable Manufacturing		Nondurable Manufacturing	
	Q to Q	Y to Y	Q to Q	Y to Y	Q to Q	Y to Y	Q to Q	Y to Y	Q to Q	Y to Y
Productivity	<b>-0.3</b>	0.8	<b>0.0</b>	0.7	<b>-2.0</b>	2.3	<b>-3.5</b>	2.5	<b>1.2</b>	3.5
Output	<b>1.8</b>	2.5	<b>1.6</b>	2.2	<b>0.6</b>	4.4	<b>1.4</b>	7.2	<b>-0.2</b>	1.7
Hours	<b>2.0</b>	1.6	<b>1.7</b>	1.5	<b>2.6</b>	2.1	<b>5.1</b>	4.6	<b>-1.4</b>	-1.8
Hourly compensation	<b>1.9</b>	2.1	<b>2.3</b>	2.2	<b>2.3</b>	2.3	<b>1.6</b>	1.9	<b>3.0</b>	2.5
Real hourly compensation	<b>-2.1</b>	-1.2	<b>-1.7</b>	-1.1	<b>-1.7</b>	-1.0	<b>-2.4</b>	-1.4	<b>-1.0</b>	-0.8
Unit labor costs	<b>2.2</b>	1.3	<b>2.4</b>	1.5	<b>4.4</b>	0.0	<b>5.3</b>	-0.6	<b>1.8</b>	-1.0

**Table B. Revised and previous measures: first quarter 2011**

Sector	Nonfarm Business		Business		Manufacturing		Durable Manufacturing		Nondurable Manufacturing	
	Revised	Previous	Revised	Previous	Revised	Previous	Revised	Previous	Revised	Previous
Percent change, annual rate, first quarter 2011										
Productivity	<b>-0.6</b>	1.8	<b>-1.4</b>	0.9	<b>4.2</b>	4.2	<b>6.9</b>	7.5	<b>3.4</b>	2.6
Output	<b>0.9</b>	3.2	<b>0.3</b>	2.6	<b>7.8</b>	7.7	<b>13.8</b>	14.0	<b>2.0</b>	1.5
Hours	<b>1.5</b>	1.4	<b>1.7</b>	1.7	<b>3.4</b>	3.3	<b>6.4</b>	6.1	<b>-1.3</b>	-1.1
Hourly compensation	<b>4.2</b>	2.5	<b>4.0</b>	2.3	<b>3.1</b>	2.8	<b>4.9</b>	2.9	<b>-0.8</b>	2.1
Real hourly compensation	<b>-1.0</b>	-2.6	<b>-1.2</b>	-2.8	<b>-2.1</b>	-2.4	<b>-0.4</b>	-2.3	<b>-5.8</b>	-3.0
Unit labor costs	<b>4.8</b>	0.7	<b>5.4</b>	1.5	<b>-1.1</b>	-1.4	<b>-1.9</b>	-4.3	<b>-4.0</b>	-0.5

**Table C. Revised and previous annual average measures: 2008-2010**

Sector	Nonfarm Business						Manufacturing					
	2010		2009		2008		2010		2009		2008	
	Revised	Previous	Revised	Previous	Revised	Previous	Revised	Previous	Revised	Previous	Revised	Previous
Percent change												
Productivity	<b>4.1</b>	3.9	<b>2.3</b>	3.7	<b>0.6</b>	1.0	<b>5.9</b>	5.9	<b>-0.4</b>	-0.4	<b>-0.4</b>	-0.4
Output	<b>4.0</b>	3.7	<b>-5.1</b>	-3.8	<b>-1.5</b>	-1.1	<b>5.8</b>	5.8	<b>-13.3</b>	-13.3	<b>-4.4</b>	-4.4
Hours	<b>-0.1</b>	-0.2	<b>-7.2</b>	-7.2	<b>-2.1</b>	-2.1	<b>0.0</b>	0.0	<b>-13.0</b>	-13.0	<b>-4.0</b>	-4.0
Hourly compensation	<b>2.1</b>	2.2	<b>1.6</b>	2.0	<b>3.4</b>	3.3	<b>1.6</b>	2.0	<b>4.5</b>	5.7	<b>4.3</b>	3.9
Real hourly compensation	<b>0.4</b>	0.6	<b>2.0</b>	2.4	<b>-0.4</b>	-0.6	<b>0.0</b>	0.4	<b>4.9</b>	6.1	<b>0.4</b>	0.1
Unit labor costs	<b>-2.0</b>	-1.6	<b>-0.7</b>	-1.6	<b>2.8</b>	2.2	<b>-4.0</b>	-3.6	<b>4.9</b>	6.1	<b>4.7</b>	4.3

<b>Table D. Nonfinancial corporations: Revised and previous first-quarter 2011 measures, and revised annual measures 2008-2010</b>								
	Productivity	Output	Hours	Hourly compensation	Real hourly compensation	Unit labor costs	Unit profits	Implicit price deflator
	Percent change, annual rate, first quarter 2011							
<b>Revised</b>	<b>1.4</b>	<b>3.6</b>	<b>2.1</b>	<b>3.1</b>	<b>-2.1</b>	<b>1.6</b>	<b>4.6</b>	<b>2.0</b>
Previous	4.1	6.2	2.0	2.4	-2.7	-1.6	15.4	0.1
	Percent change, annual average							
2010	5.3	5.4	0.1	1.9	0.3	-3.2	40.6	-0.7
2009	1.6	-6.3	-7.8	2.0	2.4	0.4	-9.2	0.6
2008	0.3	-1.4	-1.7	3.6	-0.2	3.3	-8.4	2.1

## TECHNICAL NOTES

**Labor Hours:** Hours data for the labor productivity and cost measures include hours for all persons working in the sector—wage and salary workers, the self-employed and unpaid family workers. The primary source of hours and employment data is the BLS Current Employment Statistics (CES) program, which provides monthly survey data on the number of jobs held by wage and salary workers in nonfarm establishments. The CES also provides average weekly paid hours of production and nonsupervisory workers in these establishments. Weekly paid hours are adjusted to hours at work using data from the National Compensation Survey (NCS). The BLS Hours at Work survey, conducted for this purpose, was used for earlier years. The Office of Productivity and Technology estimates average weekly hours at work for nonproduction and supervisory workers using information from the Current Population Survey (CPS), the CES, and the NCS.

Data from the CPS are used for farm labor, nonfarm proprietors, and nonfarm unpaid family workers. Estimates of labor input for government enterprises are derived from the CPS, the CES, and the National Income and Product Accounts (NIPA) prepared by the Bureau of Economic Analysis (BEA) of the Department of Commerce.

The CES measures jobs, counting a person who is employed by two or more establishments at each place of employment. In contrast, the CPS features measures of employment that count each person only once and classify each person according to his or her primary job; hours worked at all jobs by that person accrue to his or her primary job. However, the CPS also collects more detailed information on employment and hours worked at primary jobs and all other jobs, separately. The BLS productivity measures use the more detailed information on employment and hours to assign all hours worked to the correct industrial sector and avoid duplicating hours data from the CES.

**Output:** Business sector output is a chain-type, current-weighted index constructed after excluding from gross domestic product (GDP) the following outputs: general government, nonprofit institutions, and private households (including owner-occupied housing). Corresponding exclusions also are made in labor inputs. Business output accounted for about 75 percent of the value of GDP in 2009. Nonfarm business, which excludes farming, accounted for about 74 percent of GDP in 2009.

Annual indexes for manufacturing and its durable and nondurable goods components are constructed by deflating current-dollar industry value of production data from the U.S. Bureau of the Census with deflators from the BLS. These deflators are based on data from the BLS producer price program and other sources. The industry shipments are aggregated using annual weights, and intrasector transactions are removed. Quarterly manufacturing output measures are based on the index of industrial production prepared monthly by the Board of Governors of the Federal Reserve System, adjusted to be consistent with annual indexes of manufacturing sector output prepared by BLS. Durables include the following 3-digit NAICS industries: wood product manufacturing; nonmetallic mineral product manufacturing; primary metal manufacturing; fabricated metal product manufacturing; machinery manufacturing; computer and electronic product manufacturing; electrical equipment and appliance manufacturing; transportation equipment manufacturing; furniture and related product manufacturing; and miscellaneous manufacturing. Nondurables include: food manufacturing; beverage and tobacco product manufacturing; textile mills; textile product mills; apparel manufacturing; leather and allied product manufacturing; paper manufacturing; printing and related support activities; petroleum and coal products manufacturing; chemical manufacturing; and plastics and rubber products manufacturing.

Nonfinancial corporate output is a chain-type, current-weighted index calculated on the basis of the costs incurred and the incomes earned from production. The output measure excludes the following outputs from GDP: general government; nonprofit institutions; private households; unincorporated business; and those corporations classified as offices of bank holding companies, offices of other holding companies, or offices in the finance and insurance sector. Nonfinancial corporations accounted for about 47 percent of the value of GDP in 2009.

**Productivity:** These productivity measures describe the relationship between real output and the labor time involved in its production. They show the changes from period to period in the amount of goods and services produced per hour. Although these measures relate output to hours at work of all persons engaged in a sector, they do not measure the specific contribution of labor, capital, or any other factor of production. Rather, they reflect the joint effects of many influences, including changes in technology;

capital investment; level of output; utilization of capacity, energy, and materials; the organization of production; managerial skill; and the characteristics and effort of the work force.

**Labor Compensation:** The measure includes accrued wages and salaries, supplements, employer contributions to employee benefit plans, and taxes. Estimates of labor compensation by major sector, required for measures of hourly compensation and unit labor costs, are based primarily on employee compensation data from the NIPA, prepared by the BEA. The compensation of employees in general government, nonprofit institutions and private households are subtracted from compensation of domestic employees to derive employee compensation for the business sector. The labor compensation of proprietors cannot be explicitly identified and must be estimated. This is done by assuming that proprietors have the same hourly compensation as employees in the same sector. The quarterly labor productivity and cost measures do not contain estimates of compensation for unpaid family workers.

**Unit Labor Costs:** The measures of unit labor costs in this release describe the relationship between compensation per hour and productivity, or real output per hour, and can be used as an indicator of inflationary pressure on producers. Increases in hourly compensation increase unit labor costs; labor productivity increases offset compensation increases and lower unit labor costs.

**Presentation of the data:** The quarterly data in this release are presented in three ways: as percent changes from the previous quarter presented at a compound annual rate, as percent changes from the corresponding quarter of the previous year, and as index number series where 2005=100. Annual data are presented both as index number series and percent changes from the previous year.

The index numbers and rates of change reported in the productivity and costs news release are rounded to one decimal place. All percent changes in this release and on the BLS web site are calculated using index numbers to three decimal places. These index numbers are available at the BLS web site, [www.bls.gov/data/home.htm](http://www.bls.gov/data/home.htm), or by contacting the BLS Division of Major Sector Productivity. (Telephone 202-691-5606 or email [DPRWEB@BLS.GOV](mailto:DPRWEB@BLS.GOV))

Information in this release will be made available to sensory-impaired individuals upon request. Voice phone: 202-691-5606; Federal Relay Service number: 1-800-877-8339.

Table 1. Business sector: Productivity, hourly compensation, unit labor costs, and prices, seasonally adjusted

Year and quarter	Output per hour of all persons	Output	Hours of all persons	Compensation per hour (1)	Real compensation per hour (2)	Unit labor costs	Unit nonlabor payments (3)	Implicit price deflator (4)
-----								
Percent change from previous quarter at annual rate(5)								
2011 II	0.0	1.6	1.7	2.3	-1.7	2.4	2.6	2.5
I	-1.4 r	0.3 r	1.7	4.0 r	-1.2 r	5.4 r	-0.4 r	2.9 r
2010 ANNUAL	4.1 r	3.9 r	-0.1 r	2.0 r	0.4 r	-2.0 r	6.1 r	1.3 r
2010 IV	1.7 r	3.2 r	1.5	0.4 r	-2.2 r	-1.3 r	7.3 r	2.2 r
III	2.5 r	3.7 r	1.2	2.2 r	0.7 r	-0.3 r	3.2 r	1.1 r
II	1.1 r	4.7 r	3.6 r	2.4 r	2.9 r	1.2 r	2.8 r	1.9 r
I	4.3 r	5.1 r	0.8 r	1.2 r	0.0 r	-2.9 r	9.0 r	1.8 r
2009 ANNUAL	2.4 r	-4.9 r	-7.1	1.6 r	2.0 r	-0.8 r	3.1 r	0.7 r
2009 IV	5.3 r	5.0 r	-0.3	1.2 r	-1.6 r	-3.9 r	9.0 r	1.1 r
III	7.0 r	1.8 r	-4.9	2.7 r	-0.9 r	-4.0 r	7.3 r	0.3 r
II	8.0 r	-1.0 r	-8.4	6.6 r	4.6 r	-1.3 r	-1.0 r	-1.2 r
I	1.5 r	-8.5 r	-9.8 r	-2.7 r	-0.4 r	-4.1 r	10.5 r	1.4 r
-----								
Percent change from corresponding quarter of previous year								
2011 II	0.7	2.2	1.5	2.2	-1.1	1.5	3.1	2.2
I	1.0 r	3.0 r	2.0	2.2 r	0.0 r	1.2 r	3.2 r	2.0 r
2010 ANNUAL	4.1 r	3.9 r	-0.1 r	2.0 r	0.4 r	-2.0 r	6.1 r	1.3 r
2010 IV	2.4 r	4.2 r	1.8 r	1.5 r	0.3 r	-0.8 r	5.5 r	1.8 r
III	3.3 r	4.6 r	1.3	1.7 r	0.5 r	-1.5 r	6.0 r	1.5 r
II	4.4 r	4.1 r	-0.3	1.9 r	0.1 r	-2.4 r	7.0 r	1.3 r
I	6.2 r	2.7 r	-3.3	2.9 r	0.5 r	-3.1 r	6.0 r	0.5 r
2009 ANNUAL	2.4 r	-4.9 r	-7.1	1.6 r	2.0 r	-0.8 r	3.1 r	0.7 r
2009 IV	5.4 r	-0.8 r	-5.9	1.9 r	0.4 r	-3.3 r	6.3 r	0.4 r
III	3.3 r	-5.1 r	-8.1 r	2.0 r	3.7 r	-1.2 r	1.8 r	0.0 r
II	1.3 r	-6.8 r	-8.0	2.2 r	3.2 r	0.9 r	0.5 r	0.8 r
I	-0.1 r	-6.5 r	-6.4	0.3 r	0.5 r	0.4 r	4.0 r	1.8
-----								
Indexes 2005=100								
2011 II	110.4	104.4	94.6	118.2	102.7	107.1	119.1	111.8
I	110.4 r	104.0 r	94.2 r	117.5 r	103.2 r	106.4 r	118.4 r	111.2 r
2010 ANNUAL	110.0 r	102.5 r	93.2 r	115.8 r	103.6 r	105.3 r	116.3 r	109.6 r
2010 IV	110.7 r	103.9 r	93.8 r	116.3 r	103.5 r	105.0 r	118.5 r	110.4 r
III	110.3 r	103.1 r	93.5 r	116.2 r	104.1 r	105.4 r	116.4 r	109.7 r
II	109.6 r	102.1 r	93.2 r	115.6 r	103.9 r	105.5 r	115.5 r	109.4 r
I	109.3 r	101.0 r	92.4 r	114.9 r	103.1 r	105.1 r	114.7 r	108.9 r
2009 ANNUAL	105.7 r	98.7 r	93.4 r	113.5 r	103.3 r	107.4 r	109.6 r	108.3 r
2009 IV	108.2 r	99.7 r	92.2 r	114.6 r	103.1 r	105.9 r	112.3 r	108.4 r
III	106.8 r	98.5 r	92.3 r	114.2 r	103.5 r	107.0 r	109.9 r	108.1 r
II	105.0 r	98.1 r	93.4 r	113.5 r	103.8 r	108.1 r	108.0 r	108.1 r
I	103.0 r	98.3 r	95.5 r	111.7 r	102.6 r	108.5 r	108.2 r	108.4 r
-----								

See footnotes following Table 6.  
r=revised

August 9, 2011  
Source: Bureau of Labor Statistics



Table 2. Nonfarm business sector: Productivity, hourly compensation, unit labor costs, and prices, seasonally adjusted

Year and quarter	Output per hour of all persons	Output	Hours of all persons	Compensation per hour (1)	Real compensation per hour (2)	Unit labor costs	Unit nonlabor payments (3)	Implicit price deflator (4)
-----								
Percent change from previous quarter at annual rate(5)								
2011 II	-0.3	1.8	2.0	1.9	-2.1	2.2	2.3	2.2
I	-0.6 r	0.9 r	1.5 r	4.2 r	-1.0 r	4.8 r	-1.3 r	2.2 r
2010 ANNUAL	4.1 r	4.0 r	-0.1 r	2.1 r	0.4 r	-2.0 r	5.7 r	1.1 r
2010 IV	2.2 r	3.8 r	1.5	0.6 r	-2.1 r	-1.6 r	6.4 r	1.7 r
III	2.1 r	3.5 r	1.4	1.9 r	0.4 r	-0.2 r	2.0 r	0.7 r
II	1.2 r	4.6 r	3.4 r	2.6 r	3.1 r	1.4 r	3.0 r	2.0 r
I	4.6	5.2 r	0.5 r	1.4 r	0.2 r	-3.1 r	8.8 r	1.6 r
2009 ANNUAL	2.3 r	-5.1 r	-7.2	1.6 r	2.0 r	-0.7 r	3.8 r	1.1 r
2009 IV	5.5 r	5.6 r	0.1	1.2 r	-1.5 r	-4.1	7.7 r	0.5 r
III	6.5	1.4	-4.8	2.3 r	-1.3 r	-3.9 r	8.1	0.6 r
II	8.0 r	-1.1 r	-8.4	6.7 r	4.7 r	-1.2 r	-1.3 r	-1.2 r
I	1.3 r	-8.7 r	-9.9 r	-2.7 r	-0.4 r	-4.0 r	12.1 r	2.0 r
-----								
Percent change from corresponding quarter of previous year								
2011 II	0.8	2.5	1.6	2.1	-1.2	1.3	2.3	1.7
I	1.2 r	3.2	1.9	2.3 r	0.1 r	1.1 r	2.5 r	1.7 r
2010 ANNUAL	4.1 r	4.0 r	-0.1 r	2.1 r	0.4 r	-2.0 r	5.7 r	1.1 r
2010 IV	2.5 r	4.3 r	1.7	1.6 r	0.4 r	-0.9 r	5.0 r	1.5 r
III	3.3 r	4.7 r	1.3	1.8 r	0.5 r	-1.5 r	5.3 r	1.2 r
II	4.4 r	4.2 r	-0.3	1.9 r	0.1 r	-2.5 r	6.9 r	1.2 r
I	6.2 r	2.7 r	-3.2	2.9 r	0.5 r	-3.1 r	5.7 r	0.4 r
2009 ANNUAL	2.3 r	-5.1 r	-7.2	1.6 r	2.0 r	-0.7 r	3.8 r	1.1 r
2009 IV	5.3 r	-0.9 r	-5.9 r	1.8 r	0.3 r	-3.3 r	6.5 r	0.5 r
III	3.0 r	-5.5 r	-8.2	2.1 r	3.7 r	-0.9 r	2.5 r	0.4 r
II	1.2 r	-7.1 r	-8.2 r	2.4 r	3.4 r	1.1 r	1.2 r	1.2 r
I	-0.2 r	-6.7 r	-6.5	0.4 r	0.5 r	0.5 r	5.0 r	2.2
-----								
Indexes 2005=100								
2011 II	110.4	104.5	94.6	118.1	102.7	107.0	118.3	111.4
I	110.5 r	104.0 r	94.2 r	117.5 r	103.2 r	106.4 r	117.6 r	110.8 r
2010 ANNUAL	109.8 r	102.4 r	93.2 r	115.8 r	103.7 r	105.4 r	116.1 r	109.6 r
2010 IV	110.7 r	103.8 r	93.8 r	116.3 r	103.5 r	105.1 r	118.0 r	110.2 r
III	110.1 r	102.9 r	93.5 r	116.2 r	104.0 r	105.6 r	116.1 r	109.7 r
II	109.5 r	102.0 r	93.1 r	115.6 r	103.9 r	105.6 r	115.6 r	109.5 r
I	109.2 r	100.8 r	92.4 r	114.9 r	103.1 r	105.3 r	114.7 r	109.0 r
2009 ANNUAL	105.5 r	98.5 r	93.3 r	113.4 r	103.3 r	107.5 r	109.8 r	108.4 r
2009 IV	107.9 r	99.6 r	92.2 r	114.5 r	103.1 r	106.1 r	112.3 r	108.5 r
III	106.5 r	98.2 r	92.2 r	114.2 r	103.5 r	107.2 r	110.3 r	108.4 r
II	104.8 r	97.9 r	93.4 r	113.5 r	103.8 r	108.3 r	108.1 r	108.2 r
I	102.8 r	98.2 r	95.5 r	111.7 r	102.6 r	108.6 r	108.5 r	108.6 r
-----								

See footnotes following Table 6.  
r=revised

August 9, 2011  
Source: Bureau of Labor Statistics

Table 3. Manufacturing sector: Productivity, hourly compensation, and unit labor costs, seasonally adjusted

Year and quarter	Output per hour of all persons	Output	Hours of all persons	Compensation per hour (1)	Real compensation per hour (2)	Unit labor costs
Percent change from previous quarter at annual rate(5)						
2011 II	-2.0	0.6	2.6	2.3	-1.7	4.4
I	4.2	7.8 r	3.4 r	3.1 r	-2.1 r	-1.1 r
2010 ANNUAL	5.9	5.8	0.0	1.6 r	0.0 r	-4.0 r
2010 IV	4.9	3.8 r	-1.0	2.3 r	-0.4 r	-2.5 r
III	2.1	5.6	3.4	1.7 r	0.2 r	-0.5 r
II	5.2	9.2	3.8	3.8 r	4.3 r	-1.3 r
I	4.7	7.8	3.0	-2.7 r	-3.9 r	-7.1 r
2009 ANNUAL	-0.4	-13.3	-13.0	4.5 r	4.9 r	4.9 r
2009 IV	6.9	6.1	-0.8	3.1 r	0.3 r	-3.6 r
III	12.4	6.8	-4.9	1.4 r	-2.2 r	-9.8 r
II	5.3	-11.0	-15.4	7.9 r	5.9 r	2.5 r
I	-2.9	-22.3	-20.0	0.5 r	2.9 r	3.6 r
Percent change from corresponding quarter of previous year						
2011 II	2.3	4.4	2.1	2.3	-1.0	0.0
I	4.1	6.6	2.4	2.7 r	0.5 r	-1.4 r
2010 ANNUAL	5.9	5.8	0.0	1.6 r	0.0 r	-4.0 r
2010 IV	4.2	6.6	2.3	1.2 r	0.0 r	-2.9 r
III	4.7	7.2	2.3	1.4 r	0.2 r	-3.1 r
II	7.2	7.5	0.2	1.4 r	-0.4 r	-5.5 r
I	7.3	2.2	-4.8	2.4 r	0.0 r	-4.6 r
2009 ANNUAL	-0.4	-13.3	-13.0	4.5 r	4.9 r	4.9 r
2009 IV	5.3	-5.9	-10.6	3.2 r	1.7 r	-2.0 r
III	1.7	-12.8	-14.2	4.8 r	6.6 r	3.1 r
II	-2.6	-17.3	-15.1	5.8 r	6.9 r	8.7 r
I	-5.5	-16.6	-11.8	4.0 r	4.2 r	10.1 r
Indexes 2005=100						
2011 II	112.5	94.9	84.3	119.2	103.6	106.0
I	113.1 r	94.7 r	83.8 r	118.5 r	104.1 r	104.8 r
2010 ANNUAL	110.3 r	91.2 r	82.7	116.6 r	104.4 r	105.8 r
2010 IV	111.9 r	93.0 r	83.1	117.6 r	104.6 r	105.1 r
III	110.6	92.1	83.3	117.0 r	104.7 r	105.8 r
II	110.0	90.9	82.6	116.5 r	104.7 r	105.9 r
I	108.6	88.9	81.8	115.4 r	103.6 r	106.3 r
2009 ANNUAL	104.2	86.2	82.7	114.8 r	104.5 r	110.2 r
2009 IV	107.4	87.2	81.2	116.2 r	104.6 r	108.2 r
III	105.6	85.9	81.4	115.3 r	104.5 r	109.2 r
II	102.6	84.5	82.4	114.9 r	105.1 r	112.1 r
I	101.2	87.0	86.0	112.8 r	103.6 r	111.4 r

See footnotes following Table 6.  
r=revised

August 9, 2011  
Source: Bureau of Labor Statistics

Table 4. Durable manufacturing sector: Productivity, hourly compensation, and unit labor costs, seasonally adjusted

Year and quarter	Output per hour of all persons	Output	Hours of all persons	Compensation per hour (1)	Real compensation per hour (2)	Unit labor costs
-----						
Percent change from previous quarter at annual rate(5)						
2011 II	-3.5	1.4	5.1	1.6	-2.4	5.3
I	6.9 r	13.8 r	6.4 r	4.9 r	-0.4 r	-1.9 r
2010 ANNUAL	8.1	7.9 r	-0.1	2.1 r	0.4 r	-5.5 r
2010 IV	5.3 r	5.7 r	0.4	2.2 r	-0.5 r	-3.0 r
III	1.7	8.3	6.5	-0.8 r	-2.2 r	-2.5 r
II	11.3	14.5	2.8	7.1 r	7.7 r	-3.7 r
I	6.2	10.2	3.8	-3.1 r	-4.3 r	-8.7 r
2009 ANNUAL	-3.5	-18.4	-15.5	5.7 r	6.1 r	9.5 r
2009 IV	6.8	6.4	-0.4	3.8 r	1.0 r	-2.8 r
III	19.4	11.5	-6.6	1.0 r	-2.6 r	-15.4 r
II	3.7	-17.5	-20.5	11.6 r	9.5 r	7.6 r
I	-8.8	-30.3	-23.6	3.1 r	5.5 r	13.0 r
-----						
Percent change from corresponding quarter of previous year						
2011 II	2.5	7.2	4.6	1.9	-1.4	-0.6
I	6.3 r	10.5 r	4.0 r	3.3 r	1.1 r	-2.8 r
2010 ANNUAL	8.1	7.9 r	-0.1	2.1 r	0.4 r	-5.5 r
2010 IV	6.1	9.6 r	3.4	1.3 r	0.1 r	-4.5 r
III	6.5	9.8	3.2	1.7 r	0.4 r	-4.5 r
II	10.8	10.6	-0.2	2.1 r	0.3 r	-7.8 r
I	8.9	1.9	-6.4	3.2 r	0.8 r	-5.2 r
2009 ANNUAL	-3.5	-18.4	-15.5	5.7 r	6.1 r	9.5 r
2009 IV	4.8	-9.1	-13.3	4.8 r	3.3 r	0.0 r
III	-1.2	-17.8	-16.8	5.9 r	7.7 r	7.2 r
II	-6.6	-23.4	-18.0	7.4	8.4	15.0
I	-9.7	-21.9	-13.4	4.6 r	4.8 r	15.9 r
-----						
Indexes 2005=100						
2011 II	113.6	94.6	83.2	120.8	105.1	106.4
I	114.6 r	94.2 r	82.2 r	120.4 r	105.7 r	105.0 r
2010 ANNUAL	110.7 r	88.7 r	80.1	118.1 r	105.7 r	106.7 r
2010 IV	112.7 r	91.2 r	80.9	118.9 r	105.8 r	105.5 r
III	111.3	90.0	80.9	118.3 r	105.9 r	106.3 r
II	110.8	88.2	79.6	118.5 r	106.5 r	107.0 r
I	107.9	85.3	79.0	116.5 r	104.6 r	108.0 r
2009 ANNUAL	102.4	82.1	80.2	115.7 r	105.3 r	112.9 r
2009 IV	106.3	83.2	78.3	117.4 r	105.7 r	110.5 r
III	104.5	81.9	78.4	116.4 r	105.5 r	111.3 r
II	100.0	79.7	79.7	116.1 r	106.2 r	116.1 r
I	99.1	83.7	84.4	112.9 r	103.8 r	114.0 r
-----						

See footnotes following Table 6.  
r=revised

August 9, 2011  
Source: Bureau of Labor Statistics

Table 5. Nondurable manufacturing sector: Productivity, hourly compensation, and unit labor costs, seasonally adjusted

Year and quarter	Output per hour of all persons	Output	Hours of all persons	Compensation per hour (1)	Real compensation per hour (2)	Unit labor costs
-----						
Percent change from previous quarter at annual rate(5)						
2011 II	1.2	-0.2	-1.4	3.0	-1.0	1.8
I	3.4 r	2.0 r	-1.3 r	-0.8 r	-5.8 r	-4.0 r
2010 ANNUAL	3.6	3.7	0.1	0.8 r	-0.9 r	-2.8 r
2010 IV	5.3	2.0 r	-3.2	2.2 r	-0.5 r	-3.0 r
III	4.2	2.8	-1.3	5.7 r	4.2 r	1.4 r
II	-1.4	4.0	5.4	-1.9 r	-1.4 r	-0.5 r
I	3.6	5.4	1.7	-2.2 r	-3.4 r	-5.6 r
2009 ANNUAL	1.3	-7.5	-8.7	2.9 r	3.2 r	1.5 r
2009 IV	7.3	5.8	-1.4	1.9 r	-0.9 r	-5.1 r
III	4.5	2.3	-2.2	2.5 r	-1.1 r	-1.9 r
II	3.2	-3.6	-6.5	2.8 r	0.8 r	-0.4 r
I	1.2	-12.6	-13.6	-3.3 r	-1.0 r	-4.4 r
-----						
Percent change from corresponding quarter of previous year						
2011 II	3.5	1.7	-1.8	2.5	-0.8	-1.0
I	2.9 r	2.7 r	-0.2 r	1.2 r	-0.9 r	-1.6 r
2010 ANNUAL	3.6	3.7	0.1	0.8 r	-0.9 r	-2.8 r
2010 IV	2.9	3.5	0.6	0.9 r	-0.3 r	-2.0 r
III	3.4	4.5	1.1	0.8 r	-0.4 r	-2.5 r
II	3.5	4.4	0.8	0.1 r	-1.7 r	-3.3 r
I	4.6	2.4	-2.1	1.2 r	-1.1 r	-3.3 r
2009 ANNUAL	1.3	-7.5	-8.7	2.9 r	3.2 r	1.5 r
2009 IV	4.0	-2.3	-6.0	0.9 r	-0.5 r	-3.0 r
III	3.3	-6.8	-9.8	3.5 r	5.2 r	0.1 r
II	-0.1	-10.0	-9.9	3.7 r	4.7 r	3.8 r
I	-1.8	-10.4	-8.8	3.3 r	3.4 r	5.1 r
-----						
Indexes 2005=100						
2011 II	110.4	95.2	86.3	116.5	101.3	105.5
I	110.0 r	95.3 r	86.6 r	115.6 r	101.5 r	105.0 r
2010 ANNUAL	107.6 r	93.9 r	87.2	114.7 r	102.7 r	106.6 r
2010 IV	109.1 r	94.8 r	86.9	115.8 r	103.0 r	106.1 r
III	107.7	94.3	87.6	115.2 r	103.2 r	106.9 r
II	106.6	93.7	87.9	113.6 r	102.1 r	106.6 r
I	107.0	92.8	86.7	114.2 r	102.5 r	106.7 r
2009 ANNUAL	103.9	90.5	87.2	113.8 r	103.6 r	109.6 r
2009 IV	106.0	91.5	86.3	114.8 r	103.3 r	108.3 r
III	104.2	90.3	86.6	114.3 r	103.6 r	109.7 r
II	103.0	89.8	87.1	113.5 r	103.8 r	110.2 r
I	102.2	90.6	88.6	112.8 r	103.6 r	110.3 r
-----						

See footnotes following Table 6.  
r=revised

August 9, 2011  
Source: Bureau of Labor Statistics

Table 6. Nonfinancial corporate sector: Productivity, hourly compensation, unit labor costs, unit profits, and prices, seasonally adjusted

Year and quarter	Output per all-employee hour	Output	Employee hours	Hourly compensation (1)	Real hourly compensation (2)	Unit labor costs	Unit non-labor costs (6)	Total unit cost (7)	Unit profits (8)	Implicit price deflator (4)
Percent change from previous quarter at annual rate(5)										
2011 I	1.4 r	3.6 r	2.1 r	3.1 r	-2.1 r	1.6 r	1.5 r	1.6 r	4.6 r	2.0 r
2010 ANNUAL	5.3 r	5.4 r	0.1	1.9 r	0.3 r	-3.2	-9.7 r	-5.1 r	40.6 r	-0.7 r
2010 IV	-3.1 r	-1.3 r	1.9 r	-0.3 r	-3.0 r	2.9 r	1.8 r	2.6 r	-0.8 r	2.1 r
III	-0.1 r	2.3 r	2.3	2.6 r	1.2 r	2.7 r	-4.6 r	0.6 r	13.3 r	2.3 r
II	-1.2 r	2.9 r	4.2 r	1.4 r	2.0 r	2.7 r	-7.8 r	-0.4 r	10.2 r	0.9 r
I	9.3 r	10.6 r	1.2	0.9 r	-0.4 r	-7.7 r	-15.0 r	-9.9 r	101.8 r	-0.5 r
2009 ANNUAL	1.6 r	-6.3 r	-7.8 r	2.0 r	2.4 r	0.4	5.3 r	1.8 r	-9.2 r	0.6
2009 IV	10.5 r	9.9 r	-0.6	1.6 r	-1.1 r	-8.1 r	-10.4 r	-8.7 r	74.1 r	-2.4 r
III	9.3 r	3.8 r	-5.0 r	3.0 r	-0.7 r	-5.7 r	-13.5 r	-8.1 r	52.8 r	-3.7 r
II	7.2 r	-3.2 r	-9.7 r	7.4 r	5.4 r	0.2 r	-3.3 r	-0.9 r	-28.2 r	-3.7 r
I	-8.1 r	-18.6 r	-11.5 r	-6.3 r	-4.0 r	2.0 r	21.4 r	7.4 r	-29.7 r	3.0 r
Percent change from corresponding quarter of previous year										
2011 I	-0.8 r	1.8 r	2.6	1.7 r	-0.5 r	2.5 r	-2.3 r	1.1 r	6.7 r	1.8 r
2010 ANNUAL	5.3 r	5.4 r	0.1	1.9 r	0.3 r	-3.2	-9.7 r	-5.1 r	40.6 r	-0.7 r
2010 IV	1.1 r	3.5 r	2.4 r	1.1 r	-0.1 r	0.0 r	-6.6 r	-1.9 r	25.7 r	1.2 r
III	4.5 r	6.4 r	1.8 r	1.6 r	0.4 r	-2.7 r	-9.5 r	-4.7 r	44.7 r	0.1 r
II	6.8 r	6.8 r	-0.1	1.7 r	0.0 r	-4.8	-11.7 r	-6.9 r	56.0 r	-1.4 r
I	9.1 r	5.1 r	-3.6	3.2 r	0.8 r	-5.4 r	-10.7 r	-7.0 r	40.1 r	-2.6 r
2009 ANNUAL	1.6 r	-6.3 r	-7.8 r	2.0 r	2.4 r	0.4	5.3 r	1.8 r	-9.2 r	0.6
2009 IV	4.5 r	-2.6 r	-6.8 r	1.3 r	-0.1 r	-3.0 r	-2.3 r	-2.8 r	7.6 r	-1.7 r
III	1.3 r	-7.6 r	-8.8 r	2.5 r	4.1 r	1.2 r	4.9 r	2.2 r	-19.2 r	-0.3 r
II	1.1 r	-7.7 r	-8.7 r	2.9 r	3.9	1.7 r	8.7 r	3.7 r	-16.2 r	1.6 r
I	-0.3 r	-7.2 r	-6.9 r	1.5	1.6	1.8 r	10.4 r	4.3 r	-7.8 r	3.0 r
Indexes 2005=100										
2011 I	109.9 r	103.3 r	94.0 r	116.9 r	102.7 r	106.4 r	107.6 r	106.7 r	120.4 r	108.5 r
2010 ANNUAL	110.3 r	102.2 r	92.7 r	115.6 r	103.5 r	104.9 r	108.0 r	105.7 r	116.7 r	107.1 r
2010 IV	109.5 r	102.4 r	93.5 r	116.0 r	103.2 r	106.0 r	107.2 r	106.3 r	119.0 r	107.9 r
III	110.4 r	102.8 r	93.1 r	116.1 r	104.0 r	105.2 r	106.7 r	105.6 r	119.3 r	107.3 r
II	110.4 r	102.2 r	92.6 r	115.4 r	103.7 r	104.5 r	107.9 r	105.5 r	115.6 r	106.8 r
I	110.7 r	101.5 r	91.6 r	115.0 r	103.2 r	103.8 r	110.2 r	105.6 r	112.8 r	106.5 r
2009 ANNUAL	104.7 r	97.0 r	92.6 r	113.4 r	103.2 r	108.4 r	119.5 r	111.5 r	83.0 r	107.9
2009 IV	108.3 r	98.9 r	91.3 r	114.7 r	103.3 r	105.9 r	114.7 r	108.4 r	94.7 r	106.6 r
III	105.6 r	96.6 r	91.5 r	114.3 r	103.6 r	108.2 r	117.9 r	110.9 r	82.4 r	107.3 r
II	103.3 r	95.7 r	92.7 r	113.4 r	103.7 r	109.8 r	122.3 r	113.2 r	74.1 r	108.3 r
I	101.5 r	96.5 r	95.1 r	111.4 r	102.4 r	109.7 r	123.3 r	113.5 r	80.5 r	109.3 r

See footnotes following Table 6.  
r=revised

August 9, 2011  
Source: Bureau of Labor Statistics

**SOURCES:** Output data are from the Bureau of Economic Analysis and the Census Bureau of the U.S. Department of Commerce; the Bureau of Labor Statistics, U.S. Department of Labor; and the Federal Reserve Board. Compensation and hours data are from the Bureau of Labor Statistics and the Bureau of Economic Analysis.

**RELIABILITY:** Productivity and cost measures are regularly revised as more complete information becomes available. The measures are first published within 40 days of the close of the reference period; revisions appear 30 days later, and second revisions after an additional 60 days. In the business sector, the third publication (second revision) of a quarterly index of output per hour of all persons has differed from the initial value by between -1.8 and 1.6 index points approximately 95 percent of the time. This interval is based on the performance of this measure between the fourth quarter of 1995 and the first quarter of 2011.

### Table Footnotes

- (1) Wages and salaries of employees plus employers' contributions for social insurance and private benefit plans. Except for nonfinancial corporations, where there are no self-employed, data also include an estimate of wages, salaries, and supplemental payments for the self-employed.
- (2) The change for recent quarters is based on the Consumer Price Index for all urban consumers (CPI-U). The trend from 1978-2010 is based on the Consumer Price Index research series (CPI-U-RS).
- (3) Unit nonlabor payments include profits, consumption of fixed capital, taxes on production and imports less subsidies, net interest and miscellaneous payments, business current transfer payments, rental income of persons, and the current surplus of government enterprises.
- (4) Current dollar output divided by the output index.
- (5) Quarterly changes: Percent change compounded at annual rate is calculated using index numbers to three decimal places. Indexes published in the news release are rounded to one decimal place for convenience. Annual changes: Percent change is calculated using annual average indexes to three decimal places.
- (6) Unit nonlabor costs include consumption of fixed capital, taxes on production and imports less subsidies, net interest and miscellaneous payments, and business current transfer payments.
- (7) Total unit costs are the sum of unit labor and nonlabor costs.
- (8) Unit profits include corporate profits before tax with inventory valuation and capital consumption adjustments.

Appendix table 1.

Business sector: Productivity, hourly compensation, unit labor costs, and prices

Year	Output per hour of all persons	Output	Hours of all persons	Compensation per hour (1)	Real compensation per hour (2)	Unit labor costs	Unit nonlabor payments (3)	Implicit price deflator (4)
Indexes 2005=100								
2010	110.0 r	102.5 r	93.2 r	115.8 r	103.6 r	105.3 r	116.3 r	109.6 r
2009	105.7 r	98.7 r	93.4 r	113.5 r	103.3 r	107.4 r	109.6 r	108.3 r
2008	103.2 r	103.7 r	100.5 r	111.7 r	101.2 r	108.2 r	106.3 r	107.5 r
2007	102.4 r	105.1 r	102.6 r	108.1 r	101.7 r	105.5 r	105.6 r	105.6 r
2006	100.9 r	103.0 r	102.1 r	103.8 r	100.5 r	102.8 r	103.0 r	102.9 r
2005	100.0	100.0	100.0	100.0	100.0	100.0	100.0	100.0
2004	98.4 r	96.7 r	98.3 r	96.2 r	99.5 r	97.8 r	95.4 r	96.9 r
2003	95.7 r	93.0 r	97.2 r	93.0 r	98.7 r	97.2 r	90.3 r	94.5 r
2002	92.2 r	90.2 r	97.8 r	88.8 r	96.4 r	96.4 r	88.4 r	93.2 r
2001	88.2 r	88.4 r	100.3 r	86.1 r	95.0 r	97.7 r	84.5 r	92.5 r
2000	85.6 r	87.7 r	102.4 r	82.3 r	93.3 r	96.1 r	82.9 r	90.9 r
1999	82.7 r	83.9 r	101.4 r	76.6 r	89.8 r	92.6 r	84.0 r	89.2 r
1998	79.9 r	79.5 r	99.4 r	73.3 r	87.7 r	91.7 r	83.6 r	88.5 r
1997	77.6 r	75.7 r	97.5 r	69.1 r	83.8 r	89.1 r	86.2 r	87.9 r
1996	76.3 r	72.0 r	94.4 r	66.9 r	82.9 r	87.8 r	84.7 r	86.6 r
1995	74.1 r	68.8 r	92.9 r	64.7 r	82.4 r	87.4 r	81.9 r	85.2 r
1994	74.1 r	67.0 r	90.4 r	63.4 r	82.6 r	85.6 r	80.7 r	83.7 r
1993	73.4 r	63.8 r	86.9 r	62.5 r	83.1 r	85.1 r	77.9 r	82.3 r
1992	73.0 r	61.8 r	84.7 r	61.1 r	83.3 r	83.7 r	76.1 r	80.7 r
1991	70.1 r	59.5 r	84.9 r	58.0 r	81.1 r	82.8 r	73.6 r	79.2 r
1990	69.0 r	60.0 r	86.9 r	55.2 r	80.0 r	80.0 r	71.6 r	76.7 r
1989	67.6 r	59.1 r	87.4 r	51.9 r	78.9 r	76.7 r	69.9 r	74.0 r
1988	66.9 r	57.0 r	85.2 r	50.5 r	80.1 r	75.5 r	65.1 r	71.4 r
1987	65.9 r	54.6 r	82.9 r	48.0 r	79.0 r	72.9 r	63.7 r	69.2 r
1986	65.7 r	52.9 r	80.5 r	46.4 r	78.8 r	70.5 r	63.1 r	67.6 r
1985	63.9 r	51.0 r	79.8 r	44.1 r	76.3 r	69.0 r	62.7 r	66.5 r
1984	62.5 r	48.7 r	78.0 r	42.1 r	75.4 r	67.4 r	61.2 r	65.0 r
1983	60.8 r	44.8 r	73.7 r	40.4 r	75.3 r	66.4 r	58.1 r	63.1 r
1982	58.7 r	42.6 r	72.5 r	38.8 r	75.4 r	66.1 r	53.3 r	61.1 r
1981	59.2 r	43.9 r	74.1 r	36.2 r	74.5 r	61.1 r	52.6 r	57.8 r
1980	58.0 r	42.7 r	73.6 r	33.1 r	74.6 r	57.0 r	46.6 r	52.9 r
1979	58.1 r	43.2 r	74.3 r	29.9 r	74.9 r	51.4 r	44.1 r	48.5 r
1978	58.2 r	41.8 r	71.8 r	27.3 r	74.9 r	46.9 r	41.4 r	44.7 r
1977	57.5 r	39.3 r	68.3 r	25.1 r	73.7 r	43.6 r	39.0 r	41.8 r
1976	56.6 r	37.2 r	65.8 r	23.2 r	72.7 r	41.1 r	36.8 r	39.4 r
1975	54.8 r	34.9 r	63.7 r	21.4 r	70.8 r	39.0 r	35.0 r	37.4 r
1974	53.0 r	35.3 r	66.6 r	19.4 r	70.1 r	36.6 r	30.2 r	34.1 r
1973	53.9 r	35.8 r	66.5 r	17.7 r	71.0 r	32.9 r	28.4 r	31.1 r
1972	52.3 r	33.5 r	64.0 r	16.3 r	69.6 r	31.2 r	27.0 r	29.6 r
1971	50.6 r	31.4 r	62.1 r	15.4 r	67.5 r	30.3 r	25.8 r	28.5 r
1970	48.6 r	30.3 r	62.2 r	14.5 r	66.3 r	29.7 r	23.8 r	27.4 r
1969	47.7 r	30.3 r	63.5 r	13.4 r	65.1 r	28.1 r	23.3 r	26.2 r
1968	47.4 r	29.4 r	61.9 r	12.5	64.2 r	26.4 r	23.0 r	25.1 r
1967	45.9 r	28.0 r	61.0 r	11.6	61.9 r	25.3 r	22.3 r	24.1 r
1966	44.9 r	27.5 r	61.2 r	11.0	60.4 r	24.5 r	22.0 r	23.5 r
1965	43.1 r	25.7 r	59.6 r	10.3 r	58.2 r	23.9 r	21.5 r	22.9 r
1964	41.7 r	24.0 r	57.7 r	9.9 r	57.0 r	23.8 r	20.7 r	22.6 r
1963	40.3 r	22.6 r	56.1 r	9.6 r	55.6 r	23.7 r	20.2 r	22.3 r
1962	38.8 r	21.6 r	55.7 r	9.2 r	54.4 r	23.8 r	19.7 r	22.2 r
1961	37.1 r	20.3 r	54.7 r	8.8	52.6 r	23.8 r	19.1 r	22.0 r
1960	35.8 r	19.9 r	55.5 r	8.5 r	51.2 r	23.7 r	18.8 r	21.8 r
1959	35.2 r	19.5 r	55.4 r	8.2 r	50.0 r	23.2 r	19.1 r	21.6 r
1958	33.9 r	18.0 r	53.2 r	7.8	48.3 r	23.1 r	18.7 r	21.4 r
1957	33.0 r	18.4 r	55.7 r	7.5	47.6 r	22.8 r	18.3 r	21.0 r
1956	32.0 r	18.1 r	56.5 r	7.1 r	46.2 r	22.1 r	17.8 r	20.4 r
1955	31.9 r	17.8 r	55.7 r	6.6 r	44.0 r	20.7 r	18.2 r	19.7 r
1954	30.6 r	16.4 r	53.7 r	6.5	42.7 r	21.1 r	17.1 r	19.5 r
1953	30.0 r	16.7 r	55.5 r	6.3 r	41.7 r	20.9 r	17.2 r	19.4 r
1952	28.9 r	15.9 r	54.8 r	5.9 r	39.5 r	20.3 r	17.6 r	19.2 r
1951	28.1 r	15.4 r	54.7 r	5.5 r	37.9 r	19.7 r	18.0 r	19.0 r
1950	27.3 r	14.5 r	53.0 r	5.1	37.3 r	18.5 r	16.3 r	17.7 r

1949	25.2 r	13.2 r	52.3 r	4.7	35.3 r	18.7 r	15.5 r	17.5 r
1948	24.6 r	13.3 r	54.0 r	4.7 r	34.4 r	18.9 r	15.7 r	17.6 r
1947	23.5 r	12.6 r	53.6 r	4.3 r	34.3 r	18.2 r	14.1 r	16.6 r

---

See footnotes following Table 6.  
r=revised

August 9, 2011  
Source: Bureau of Labor Statistics



Appendix table 2.

Nonfarm business sector: Productivity, hourly compensation, unit labor costs, and prices

Year	Output per hour of all persons	Output	Hours of all persons	Compensation per hour (1)	Real compensation per hour (2)	Unit labor costs	Unit nonlabor payments (3)	Implicit price deflator (4)
Indexes 2005=100								
2010	109.8 r	102.4 r	93.2 r	115.8 r	103.7 r	105.4 r	116.1 r	109.6 r
2009	105.5 r	98.5 r	93.3 r	113.4 r	103.3 r	107.5 r	109.8 r	108.4 r
2008	103.1 r	103.7 r	100.6 r	111.6 r	101.2 r	108.2 r	105.8 r	107.3 r
2007	102.4 r	105.3 r	102.7 r	107.9 r	101.6 r	105.3 r	105.4 r	105.4 r
2006	100.9 r	103.1 r	102.2 r	103.8 r	100.5 r	102.8 r	103.2 r	103.0 r
2005	100.0	100.0	100.0	100.0	100.0	100.0	100.0	100.0
2004	98.4 r	96.7 r	98.3 r	96.2 r	99.4 r	97.8 r	94.8 r	96.6 r
2003	95.8 r	93.0 r	97.1 r	93.1 r	98.8 r	97.1 r	90.1 r	94.4 r
2002	92.4 r	90.3 r	97.6 r	88.9 r	96.5 r	96.2 r	88.7 r	93.2 r
2001	88.4 r	88.6 r	100.2 r	86.2 r	95.0 r	97.5 r	84.6 r	92.4 r
2000	85.9 r	87.8 r	102.2 r	82.5 r	93.5 r	96.0 r	83.0 r	90.9 r
1999	83.1 r	84.1 r	101.2 r	76.8 r	89.9 r	92.4 r	84.1 r	89.1 r
1998	80.4 r	79.6 r	99.0 r	73.6 r	88.0 r	91.5 r	83.3 r	88.3 r
1997	78.1 r	75.7 r	96.9 r	69.4 r	84.2 r	88.9 r	85.6 r	87.6 r
1996	76.9 r	72.1 r	93.7 r	67.4 r	83.4 r	87.5 r	83.7 r	86.0 r
1995	75.0 r	69.0 r	92.0 r	65.2 r	82.9 r	86.9 r	81.6 r	84.8 r
1994	74.7 r	66.9 r	89.6 r	63.9 r	83.2 r	85.5 r	80.1 r	83.4 r
1993	73.9 r	63.9 r	86.4 r	62.7 r	83.5 r	84.9 r	77.3 r	81.9 r
1992	73.5 r	61.8 r	84.0 r	61.5 r	83.9 r	83.7 r	75.1 r	80.3 r
1991	70.7 r	59.5 r	84.2 r	58.4 r	81.6 r	82.6 r	72.8 r	78.7 r
1990	69.6 r	60.1 r	86.3 r	55.5 r	80.3 r	79.7 r	70.5 r	76.1 r
1989	68.4 r	59.2 r	86.6 r	52.2 r	79.4 r	76.4 r	68.7 r	73.4 r
1988	67.9 r	57.2 r	84.3 r	50.9 r	80.8 r	75.1 r	64.2 r	70.8 r
1987	66.8 r	54.7 r	81.9 r	48.5 r	79.7 r	72.7 r	62.7 r	68.7 r
1986	66.6 r	52.9 r	79.5 r	46.8 r	79.5 r	70.3 r	62.1 r	67.1 r
1985	64.6 r	51.0 r	78.9 r	44.5 r	76.9 r	68.9 r	61.5 r	66.0 r
1984	63.5 r	48.9 r	76.9 r	42.6 r	76.2 r	67.0 r	59.7 r	64.1 r
1983	62.3 r	45.1 r	72.5 r	40.9 r	76.2 r	65.7 r	57.2 r	62.4 r
1982	59.7 r	42.4 r	71.1 r	39.3 r	76.3 r	65.8 r	52.1 r	60.4 r
1981	60.3 r	43.8 r	72.7 r	36.7 r	75.5 r	60.8 r	50.9 r	56.9 r
1980	59.5 r	42.9 r	72.2 r	33.4 r	75.4 r	56.2 r	45.3 r	51.9 r
1979	59.6 r	43.4 r	72.8 r	30.2 r	75.7 r	50.7 r	42.3 r	47.4 r
1978	59.9 r	42.1 r	70.3 r	27.6 r	75.8 r	46.1 r	39.9 r	43.7 r
1977	59.1 r	39.5 r	66.8 r	25.4 r	74.5 r	42.9 r	37.8 r	40.9 r
1976	58.2 r	37.4 r	64.2 r	23.5 r	73.4 r	40.3 r	35.7 r	38.5 r
1975	56.3 r	34.9 r	62.0 r	21.6 r	71.6 r	38.4 r	33.5 r	36.5 r
1974	54.8 r	35.5 r	64.8 r	19.7 r	71.0 r	35.9 r	28.4 r	32.9 r
1973	55.7 r	36.0 r	64.7 r	17.9 r	71.8 r	32.2 r	26.3 r	29.9 r
1972	54.0 r	33.6 r	62.2 r	16.6 r	70.5 r	30.7 r	26.0 r	28.8 r
1971	52.3 r	31.5 r	60.2 r	15.5 r	68.4 r	29.8 r	25.2 r	28.0 r
1970	50.2 r	30.3 r	60.4 r	14.6 r	67.1 r	29.1 r	23.3 r	26.8 r
1969	49.5 r	30.4 r	61.3 r	13.6 r	66.2 r	27.5 r	22.8 r	25.7 r
1968	49.4 r	29.5 r	59.6 r	12.8 r	65.3 r	25.8 r	22.6 r	24.6 r
1967	47.8 r	28.0 r	58.6 r	11.8 r	63.1 r	24.8 r	21.9 r	23.6 r
1966	47.0 r	27.5 r	58.6 r	11.2 r	61.5 r	23.8 r	21.5 r	22.9 r
1965	45.4 r	25.7 r	56.6 r	10.6 r	59.7 r	23.3 r	21.0 r	22.4 r
1964	44.0 r	24.0 r	54.5 r	10.2 r	58.7 r	23.2 r	20.3 r	22.1 r
1963	42.7 r	22.5 r	52.6 r	9.9 r	57.7 r	23.2 r	19.7 r	21.8 r
1962	41.3 r	21.5 r	52.0 r	9.6 r	56.5 r	23.2 r	19.3 r	21.7 r
1961	39.5 r	20.1 r	50.9 r	9.2 r	54.9 r	23.3 r	18.6 r	21.5 r
1960	38.3 r	19.7 r	51.4 r	8.9 r	53.7 r	23.3 r	18.2 r	21.3 r
1959	37.9 r	19.4 r	51.1 r	8.6 r	52.3 r	22.6 r	18.7 r	21.0 r
1958	36.5 r	17.8 r	48.9 r	8.2 r	50.7 r	22.6 r	18.0 r	20.8 r
1957	35.7 r	18.2 r	51.0 r	7.9 r	50.2 r	22.2 r	17.9 r	20.5 r
1956	34.8 r	17.8 r	51.3 r	7.5 r	49.0 r	21.5 r	17.3 r	19.9 r
1955	35.0 r	17.5 r	50.1 r	7.1 r	46.9 r	20.1 r	17.7 r	19.2 r
1954	33.6 r	16.2 r	48.1 r	6.8 r	45.0 r	20.2 r	16.7 r	18.8 r
1953	33.0 r	16.4 r	49.8 r	6.6 r	44.0 r	20.0 r	16.6 r	18.7 r
1952	32.2 r	15.7 r	48.6 r	6.2 r	42.0 r	19.4 r	16.7 r	18.3 r
1951	31.7 r	15.2 r	48.1 r	5.9 r	40.5 r	18.7 r	16.8 r	18.0 r
1950	30.8 r	14.2 r	45.9 r	5.4 r	40.2 r	17.7 r	15.6 r	16.9 r

1949	28.9 r	12.9 r	44.5 r	5.1	38.5 r	17.8 r	15.0 r	16.7 r
1948	28.0 r	12.9 r	46.3 r	5.0	36.9 r	17.9 r	14.5 r	16.5 r
1947	27.2 r	12.4 r	45.5 r	4.6 r	36.7 r	16.9 r	13.4 r	15.5 r

See footnotes following Table 6.  
r=revised

August 9, 2011  
Source: Bureau of Labor Statistics

Appendix table 3.

Nonfinancial corporate sector: Productivity, hourly compensation, unit labor costs, unit profits, and prices

Year	Output per all-employee hour	Output	Employee hours	Hourly compensation (1)	Real hourly compensation (2)	Unit labor costs	Unit non-labor costs (6)	Total unit cost (7)	Unit profits (8)	Implicit price deflator (4)
Indexes 2005=100										
2010	110.3 r	102.2 r	92.7 r	115.6 r	103.5 r	104.9 r	108.0 r	105.7 r	116.7 r	107.1 r
2009	104.7 r	97.0 r	92.6 r	113.4 r	103.2 r	108.4 r	119.5 r	111.5 r	83.0 r	107.9
2008	103.0 r	103.5 r	100.5 r	111.2 r	100.8 r	108.0 r	113.5 r	109.5 r	91.5 r	107.2
2007	102.7 r	105.0	102.2 r	107.3 r	101.0 r	104.5	109.0	105.7	99.8	105.0
2006	101.9 r	103.8	101.9 r	103.3 r	100.0 r	101.3	103.0	101.8	111.6	103.0
2005	100.0	100.0	100.0	100.0	100.0	100.0	100.0	100.0	100.0	100.0
2004	97.8 r	96.5	98.7 r	96.5 r	99.7 r	98.6	95.7	97.8	88.0	96.6
2003	94.4 r	92.3	97.8 r	93.9 r	99.7 r	99.5	96.8	98.7	66.0	94.6
2002	90.5 r	90.1	99.6 r	89.5 r	97.1 r	98.9	97.0	98.4	59.4	93.5
2001	87.1 r	89.5	102.7 r	87.1 r	96.1 r	100.0	96.7	99.1	51.8	93.1
2000	86.4 r	91.2	105.6 r	84.4 r	95.6 r	97.6	91.1	95.8	64.3	91.8
1999	83.0 r	86.6	104.3 r	78.6 r	92.0 r	94.6	88.1	92.8	77.3	90.8
1998	80.5 r	82.0	102.0 r	75.2 r	90.0 r	93.5	85.7	91.3	83.1	90.3
1997	77.8 r	77.6	99.8 r	71.0 r	86.0 r	91.2	85.3	89.6	94.7	90.2
1996	75.8 r	72.9	96.1 r	68.9 r	85.3 r	90.8	85.4	89.3	92.5	89.7
1995	73.1 r	69.0	94.4 r	66.9 r	85.1 r	91.5	85.8	89.9	85.4	89.3
1994	72.4 r	66.0	91.1 r	65.7 r	85.6 r	90.8	85.5	89.3	82.4	88.4
1993	70.9 r	62.0	87.4 r	64.6 r	85.9 r	91.0	85.1	89.4	70.3	87.0
1992	70.8 r	60.4	85.4 r	63.4 r	86.5 r	89.6	85.8	88.6	61.4	85.1
1991	69.0 r	58.7	85.0 r	60.5 r	84.6 r	87.6	87.9	87.7	58.0	83.9
1990	67.4 r	59.0	87.5 r	57.6 r	83.4 r	85.6	83.5	85.0	58.9	81.7
1989	66.6 r	58.1	87.2 r	55.0 r	83.6 r	82.5	80.0	81.8	61.2	79.2
1988	67.6 r	57.1	84.6 r	53.7 r	85.1 r	79.4	75.1	78.2	66.8	76.8
1987	65.9 r	54.0	82.0 r	51.5 r	84.6 r	78.1	74.2	77.0	60.3	74.9
1986	64.6 r	51.4	79.5 r	49.8 r	84.7 r	77.1	74.9	76.5	53.6	73.6
1985	63.3 r	50.1	79.3 r	47.5 r	82.1 r	75.0	71.5	74.1	62.4	72.6
1984	62.0 r	48.1	77.5 r	45.4 r	81.3 r	73.2	69.6	72.2	65.2	71.3
1983	60.6 r	44.2	72.8 r	43.6 r	81.3 r	71.9	70.3	71.5	54.3	69.3
1982	58.7 r	42.1	71.8 r	42.1 r	81.7 r	71.7	70.2	71.3	44.7	67.9
1981	58.5 r	43.1	73.8 r	39.5 r	81.3 r	67.5	63.3	66.3	48.5	64.1
1980	57.1 r	41.5	72.7 r	36.2 r	81.7 r	63.5	55.6	61.3	40.7	58.7
1979	57.2 r	41.9	73.2 r	32.9 r	82.5 r	57.5	47.5	54.7	45.4	53.5
1978	57.7 r	40.6	70.4 r	30.2 r	82.9 r	52.3	43.6	49.9	48.4	49.7
1977	57.0 r	38.2	66.9 r	27.6 r	81.2 r	48.5	41.5	46.5	46.6	46.6
1976	55.5 r	35.5	64.0 r	25.6 r	80.1 r	46.1	40.0	44.4	42.7	44.2
1975	53.7 r	32.8	61.2 r	23.7 r	78.3 r	44.1	40.3	43.0	37.8	42.4
1974	51.7 r	33.3	64.5 r	21.5 r	77.8 r	41.7	35.4	39.9	29.1	38.6
1973	52.8 r	33.9	64.2 r	19.7 r	78.9 r	37.3	30.8	35.5	32.9	35.2
1972	52.2 r	31.9	61.1 r	18.3 r	77.9 r	35.0	29.3	33.4	32.5	33.3
1971	51.2 r	29.6	57.9 r	17.3 r	76.3 r	33.9	29.3	32.6	30.0	32.3
1970	49.1 r	28.5	58.0 r	16.3 r	74.9 r	33.3	28.0	31.8	26.5	31.1
1969	48.7 r	28.7	58.9 r	15.3 r	74.0 r	31.3	24.8	29.5	32.5	29.9
1968	48.7 r	27.6	56.7 r	14.3 r	73.1 r	29.4	23.0	27.6	35.9	28.6
1967	47.0 r	25.9	55.1 r	13.3 r	70.8 r	28.3	21.7	26.4	36.0	27.6
1966	46.2 r	25.2	54.6 r	12.6 r	69.1 r	27.2	20.4	25.3	38.5	27.0
1965	45.4 r	23.5	51.8 r	11.9 r	67.3 r	26.2	20.3	24.6	38.7	26.4
1964	44.3 r	21.7	49.0 r	11.6 r	66.5 r	26.1	20.5	24.6	36.0	26.0
1963	43.6 r	20.3	46.5 r	11.4 r	66.1 r	26.0	20.5	24.5	34.7	25.8
1962	42.1 r	19.1	45.5 r	11.0 r	65.0 r	26.2	20.6	24.6	32.8	25.7
1961	40.3 r	17.6	43.8 r	10.6 r	63.2 r	26.3	21.0	24.8	30.4	25.5
1960	39.0 r	17.2	44.2 r	10.3 r	61.8 r	26.3	20.6	24.7	30.3	25.4
1959	38.4 r	16.7	43.5 r	9.9 r	60.5 r	25.7	20.1	24.2	32.9	25.3
1958	36.6 r	15.0	41.0 r	9.5 r	58.7 r	26.0	21.0	24.6	28.3	25.1

See footnotes following Table 6.  
r=revised

August 9, 2011  
Source: Bureau of Labor Statistics