

# NEWS RELEASE

BUREAU OF LABOR STATISTICS  
U. S. D E P A R T M E N T O F L A B O R



Transmission of material in this release is embargoed until  
8:30 a.m. (ET) Friday, May 14, 2021

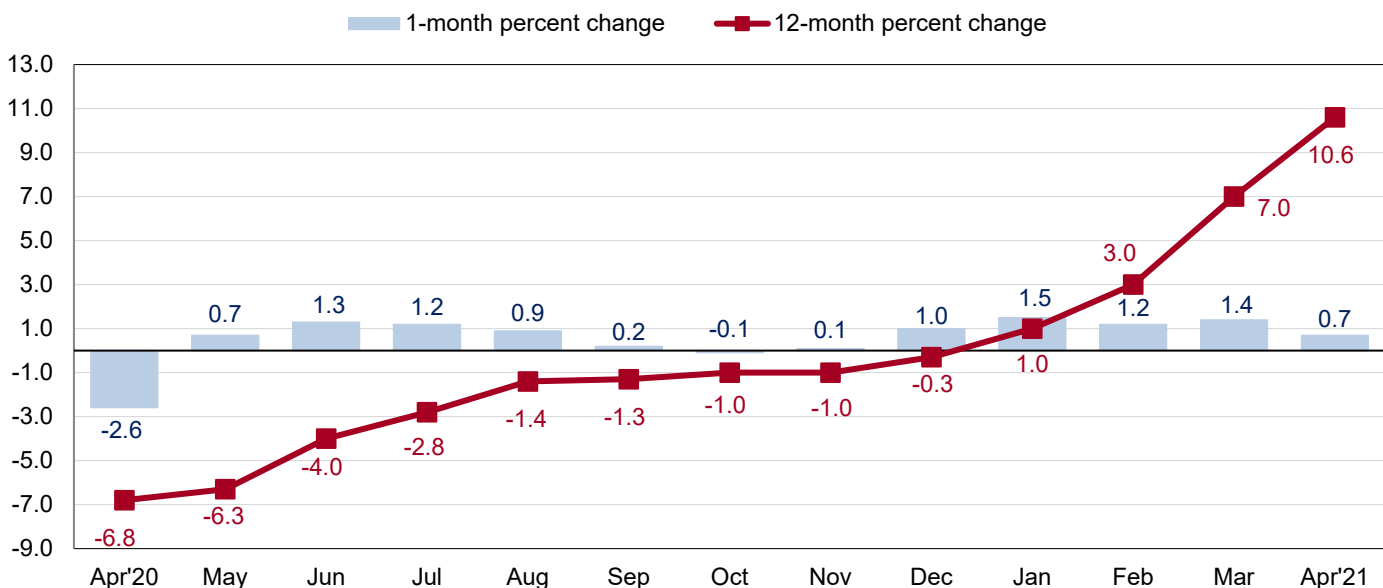
USDL-21-0860

Technical information: (202) 691-7101 • [MXPinfo@bls.gov](mailto:MXPinfo@bls.gov) • [www.bls.gov/mxp](http://www.bls.gov/mxp)  
Media contact: (202) 691-5902 • [PressOffice@bls.gov](mailto:PressOffice@bls.gov)

## U.S. IMPORT AND EXPORT PRICE INDEXES – APRIL 2021

U.S. import prices advanced 0.7 percent in April following a 1.4-percent increase in March, the U.S. Bureau of Labor Statistics reported today. Higher prices for fuel and nonfuel imports contributed to both the April and March advances. Prices for U.S. exports increased 0.8 percent in April, after rising 2.4 percent the previous month.

Chart 1. One-month and 12-month percent changes in the Import Price Index: April 2020 – April 2021



### Imports

The price index for U.S. imports continued to rise in April, advancing 0.7 percent. The April increase followed advances of 1.4 percent in March, 1.2 percent in February, and 1.5 percent in January. In April, a 0.7-percent rise in nonfuel import prices and a 0.5-percent increase in fuel prices both contributed to the overall advance. U.S. import prices rose 10.6 percent from April 2020 to April 2021, the largest over-the-year increase for the index since an 11.1-percent advance for the year ended October 2011. (See table 1.)

#### **Coronavirus (COVID-19) Pandemic Impact on April 2021 Import and Export Price Index Data**

The Bureau of Labor Statistics did not make changes to either the collection method or estimation methodology for the April 2021 release of U.S. Import and Export Price Indexes. Survey response rates for April 2021 were 2.3-percentage points lower than those in April 2020. Additional information is available at [www.bls.gov/covid19/import-export-price-indexes-covid19-impacts-april-2021.htm](http://www.bls.gov/covid19/import-export-price-indexes-covid19-impacts-april-2021.htm).

**Fuel Imports:** Prices for import fuel rose 0.5 percent in April, after increasing 7.5 percent in March, 11.0 percent in February, and 9.0 percent in January. In April, increasing petroleum prices more than offset decreasing natural gas prices. The price index for import petroleum rose 1.2 percent in April following an 8.4-percent increase the previous month. Prices for import natural gas declined 12.1 percent in April, after a 4.8-percent drop in March. The April decrease was the largest decline since the index fell 14.7 percent in October 2020. Import fuel prices advanced 126.5 percent over the past year, the largest 12-month increase for the index since a 145.1-percent rise for the year ended in February 2000. Prices for petroleum and natural gas also advanced for the year ended in April, rising 133.7 percent and 59.6 percent, respectively.

**All Imports Excluding Fuel:** Import prices excluding fuel increased 0.7 percent in April following a 0.9-percent advance the previous month. Higher prices for nonfuel industrial supplies and materials; foods, feeds, and beverages; capital goods; and automotive vehicles all contributed to the April rise in nonfuel import prices. Prices for nonfuel imports advanced 5.0 percent over the past 12 months, the largest over-the-year increase since the index rose 5.4 percent in September 2011.

*Nonfuel Industrial Supplies and Materials:* The price index for nonfuel industrial supplies and materials advanced 2.4 percent in April, after increasing 4.0 percent in March. The April rise was driven by higher prices for building materials, chemicals, and unfinished metals.

*Finished Goods:* Prices for most of the major finished goods categories advanced in April. Capital goods prices increased 0.3 percent, the largest advance since the index rose 0.3 percent in February 2018. Prices for automotive vehicles increased 0.2 percent in April following 0.1-percent advances the previous 2 months. Consumer goods prices recorded no change in April.

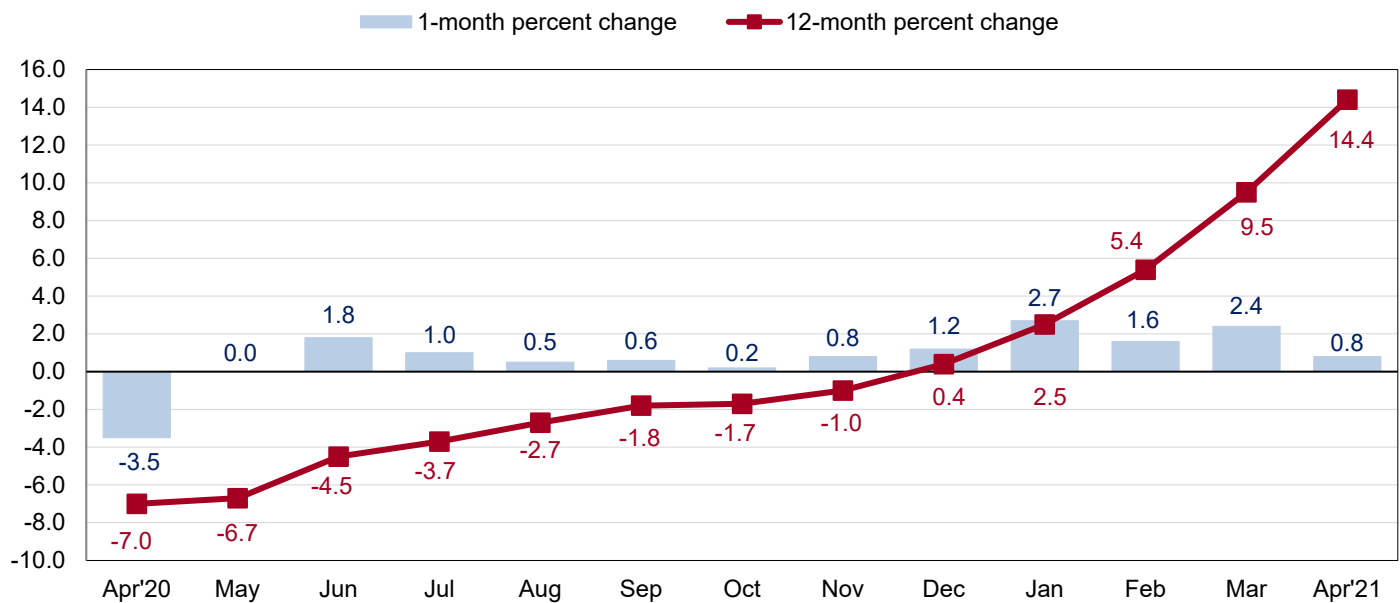
*Foods, Feeds, and Beverages:* Foods, feeds, and beverages prices rose 2.0 percent in April, after increasing 2.1 percent the previous month. The April advance was led by higher fruit and meat prices.

**Table A. Percent change in Import and Export Price Indexes, selected categories**

Month	IMPORTS			EXPORTS		
	All imports	Fuel imports	Nonfuel imports	All exports	Agricultural exports	Non-agricultural exports
<b>2020</b>						
April.....	-2.6	-30.9	-0.5	-3.5	-3.3	-3.5
May.....	0.7	13.9	0.1	0.0	-0.4	0.0
June.....	1.3	20.6	0.3	1.8	1.6	1.7
July.....	1.2	15.2	0.2	1.0	1.6	0.9
August.....	0.9	3.7	0.7	0.5	-2.2	0.9
September.....	0.2	-4.7	0.5	0.6	2.8	0.3
October.....	-0.1	-1.0	0.0	0.2	3.5	-0.2
November.....	0.1	4.4	-0.2	0.8	3.5	0.5
December.....	1.0	7.3	0.4	1.2	1.0	1.3
<b>2021</b>						
January.....	1.5 <sup>r</sup>	9.0 <sup>r</sup>	0.9	2.7 <sup>r</sup>	6.0	2.3
February.....	1.2 <sup>r</sup>	11.0 <sup>r</sup>	0.4 <sup>r</sup>	1.6	2.7 <sup>r</sup>	1.5
March.....	1.4 <sup>r</sup>	7.5 <sup>r</sup>	0.9 <sup>r</sup>	2.4 <sup>r</sup>	2.4	2.4 <sup>r</sup>
April.....	0.7	0.5	0.7	0.8	0.6	0.9
Apr. 2019 to 2020.....	-6.8	-56.6	-1.0	-7.0	-4.3	-7.2
Apr. 2020 to 2021.....	10.6	126.5	5.0	14.4	25.2	13.1

r Revised

**Chart 2. One-month and 12-month percent changes in the Export Price Index: April 2020 – April 2021**



## Exports

U.S. export prices rose 0.8 percent in April, after increasing 2.4 percent in March, 1.6 percent in February, and 2.7 percent in January. The price index for U.S. exports has not recorded a monthly decline since a 3.5-percent drop in April 2020. A 0.9-percent advance in nonagricultural prices and a 0.6-percent rise in agricultural prices both contributed to the April increase in U.S. export prices. Prices for U.S. exports rose 14.4 percent for the year ended in April, the largest 12-month increase since the index was first published in September 1983. (See table 2.)

**Agricultural Exports:** The price index for agricultural exports advanced 0.6 percent in April following rises of 2.4 percent in March, 2.7 percent in February, and 6.0 percent in January. In April, higher prices for other animal feeds, meat, dairy products, and vegetables more than offset lower prices for wheat, nuts, fruit, and cotton. Agricultural export prices increased 25.2 percent for the year ended in April, the largest 12-month advance since the index rose 26.4 percent in July 2011. Higher prices for soybeans, corn, cotton, fruit, vegetables, and meat primarily drove the increase in agricultural exports over the past 12 months.

**All Exports Excluding Agriculture:** Prices for nonagricultural exports advanced 0.9 percent in April, after increases of 2.4 percent, 1.5 percent, and 2.3 percent the previous 3 months. The rise in April was led by higher prices for nonagricultural industrial supplies and materials, capital goods, and automotive vehicles which more than offset lower prices for consumer goods. Nonagricultural prices advanced 13.1 percent from April 2020 to April 2021, the largest over-the-year increase since the index was first published in March 1985.

*Nonagricultural Industrial Supplies and Materials:* Nonagricultural industrial supplies and materials prices rose 1.8 percent in April following a 6.0-percent advance the previous month. The April increase was driven by a 6.9-percent rise in chemical prices which more than offset a 1.9-percent drop in fuel prices.

*Finished Goods:* Prices for the major finished goods categories were mostly up in April. Capital goods prices advanced 0.3 percent in April, after increasing 0.2 percent in March. The April rise was led by higher prices for industrial and service machinery and computers, peripherals, and semiconductors. The price index for automotive vehicles advanced 0.2 percent in April following a 0.1-percent increase the previous month. In contrast, consumer goods prices edged down 0.1 percent in April.

## **Measures of Import and Export Prices by Locality**

**Imports by Locality of Origin:** Import prices from China rose 0.4 percent in April, after advancing 1.5 percent from November to March. Prices for imports from China increased 2.1 percent for the year ended in April, the largest 12-month advance since a 2.6-percent rise in March 2012. The price index for imports from Japan advanced 0.4 percent in April following a 0.3-percent increase the previous month. The April rise was the largest 1-month advance since the index rose 0.5 percent in January 2018. Import prices from Japan increased 1.7 percent over the past 12 months, the largest over-the-year advance since a 1.9-percent rise in January 2012. Prices for imports from Canada increased 1.1 percent in April and import prices from Mexico advanced 0.7 percent. The April rises followed advances in March of 4.4 percent for import prices from Canada and 0.9 percent for import prices from Mexico. The price index for imports from the European Union also rose in April, ticking up 0.1 percent. (See table 7.)

**Exports by Locality of Destination:** Prices for exports to China advanced 0.6 percent in April, after increasing 3.8 percent in March. Export prices to China advanced 16.0 percent from April 2020 to April 2021, the largest 12-month increase since the index was first published in December 2017. The price index for exports to Japan ticked up 0.1 percent in April following increases of 1.3 percent in March, 1.6 percent in February, and 2.2 percent in January. Prices for exports to Japan rose 15.2 percent over the past 12 months, the largest over-the-year advance since the index was first published in December 2017. Export prices to Canada and Mexico also increased in April, rising 1.3 percent and 2.5 percent, respectively. The price index for exports to the European Union advanced 0.2 percent in April, after increasing 1.1 percent the previous month. (See table 8.)

**Terms of Trade Indexes:** Terms of trade indexes are based on country, region, or grouping and measure the change in the purchasing power of exports relative to imports. U.S. terms of trade with China rose 0.2 percent in April following a 3.4-percent advance the previous month. In April, increasing export prices to China more than offset rising import prices from China. The index for U.S. terms of trade with China advanced 13.6 percent from April 2020 to April 2021, the largest 12-month increase since the index was first published in December 2017. In contrast, U.S. terms of trade with Japan declined 0.4 percent in April, the first monthly decrease since the index fell 3.4 percent in April 2020. The index for U.S. terms of trade with Canada rose 0.2 percent in April, after falling 2.8 percent in March. In April, U.S. terms of trade advanced 1.8 percent with Mexico and 0.1 percent with the European Union. (See table 9.)

## **Import and Export Services**

**Imports:** The index for import air passenger fares advanced 0.9 percent in April, after decreasing 3.6 percent in March. In April, higher European and Latin American/Caribbean fares more than offset falling Asian fares. Import air passenger fares rose 8.0 percent over the past year, the first 12-month increase since the index advanced 1.2 percent in January 2019. Import air freight prices increased 8.3 percent in April following a 1.9-percent drop in March. The April advance was the largest rise since a 9.8-percent increase in November 2020, and import air freight prices rose 28.0 percent over the past 12 months. (See table 10.)

**Exports:** Export air passenger fares rose 0.2 percent in April, after declining 1.5 percent in March and 4.7 percent in February. The index for export air passenger fares increased 26.9 percent over the past 12 months, the largest over-the-year advance since a 30.5-percent rise in July 2010. Prices for export air freight fell 2.8 percent in April. Despite the decrease, export air freight prices increased 0.6 percent over the past year.

---

**U.S. Import and Export Price Index data for May are scheduled for release on Wednesday, June 16, 2021 at 8:30 a.m. (ET).**

**Table 1. U.S. import price indexes and percent changes for selected categories of goods: April 2020 to April 2021**

[2000=100, unless otherwise noted]

Description	End Use	Relative importance Mar. 2021 <sup>1</sup>	Index		Percent change				
			Mar. 2021	Apr. 2021	Annual Apr. 2020 to Apr. 2021	Monthly			
						Dec. 2020 to Jan. 2021	Jan. 2021 to Feb. 2021	Feb. 2021 to Mar. 2021	Mar. 2021 to Apr. 2021
<b>All commodities</b> .....		100.000	129.8	130.7	10.6	1.5	1.2	1.4	0.7
<b>All imports excluding food and fuels (Dec. 2010=100)</b> .....		84.828	102.9	103.5	4.9	0.8	0.4	0.8	0.6
<b>All imports excluding petroleum</b> .....		91.842	116.6	117.4	5.3	0.9	0.5	0.8	0.7
<b>All imports excluding fuels (Dec. 2001=100)</b> .....		91.215	120.6	121.4	5.0	0.9	0.4	0.9	0.7
<b>Foods, feeds, &amp; beverages</b> .....	0	6.388	185.6	189.3	7.5	1.8	1.3	2.1	2.0
Agricultural foods, feeds & beverages, excluding distilled beverages.....	00	4.995	202.2	205.8	8.1	1.8	1.6	2.3	1.8
Nonagricultural foods (fish, distilled beverages).....	01	1.393	148.2	152.3	5.0	1.7	0.3	1.5	2.8
<b>Industrial supplies &amp; materials</b> .....	1	23.993	212.1	215.8	50.7	5.8	4.7	5.2	1.7
Industrial supplies & materials excluding petroleum.....		16.047	185.2	188.7	26.0	4.0	2.0	3.6	1.9
Industrial supplies & materials excluding fuels (Dec. 2001=100).....		15.286	208.5	213.6	25.5	4.3	1.5	4.0	2.4
Industrial supplies & materials, durable....		10.122	212.7	218.0	33.1	5.7	1.3	4.6	2.5
Industrial supplies & materials nondurable excluding petroleum.....		5.713	150.8	152.3	15.2	1.3	3.3	1.8	1.0
Fuels & lubricants.....	10	8.785	220.5	221.5	126.5	9.0	11.0	7.5	0.5
Petroleum & petroleum products.....	100	8.158	236.3	239.1	133.7	9.9	10.8	8.4	1.2
Crude.....	10000	5.499	252.0	249.9	188.2	10.5	12.1	9.4	-0.8
Fuels, n.e.s.-coals & gas.....	101	0.536	151.1	136.0	51.3	-1.2	16.1	-4.5	-10.0
Gas-natural.....	10110	0.458	142.3	125.1	59.6	-1.9	18.0	-4.8	-12.1
Paper & paper base stocks.....	11	0.478	113.5	114.5	6.8	-0.8	1.3	3.0	0.9
Materials associated with nondurable supplies & materials.....	12	4.608	166.7	171.0	13.3	2.0	1.9	2.7	2.6
Selected building materials.....	13	2.101	212.7	225.1	59.1	12.9	0.6	6.4	5.8
Unfinished metals related to durable goods.....	14	4.365	330.5	336.6	47.6	6.8	1.6	6.7	1.8
Finished metals related to durable goods.....	15	1.929	175.2	178.9	15.1	1.7	2.5	2.6	2.1
Nonmetals related to durable goods.....	16	1.728	114.4	114.8	2.3	0.4	0.0	0.2	0.3
<b>Capital goods</b> .....	2	27.689	88.8	89.1	1.3	0.2	0.1	0.1	0.3
Electric generating equipment.....	20	3.399	121.5	122.4	0.7	-0.1	0.1	0.2	0.7
Nonelectrical machinery.....	21	21.714	80.6	80.8	1.1	0.2	0.0	0.1	0.2
Transportation equipment excluding motor vehicles (Dec. 2001=100).....	22	2.576	137.8	138.1	2.1	0.5	0.4	0.1	0.2
<b>Automotive vehicles, parts &amp; engines</b> .....	3	15.590	111.6	111.8	0.9	0.5	0.1	0.1	0.2
<b>Consumer goods, excluding automobiles</b> .....	4	26.341	107.2	107.2	0.8	0.0	0.1	0.1	0.0
Nondurables, manufactured.....	40	13.404	124.3	124.2	0.2	-0.5	0.2	0.2	-0.1
Durables, manufactured.....	41	11.880	91.2	91.4	0.9	0.4	0.0	-0.1	0.2
Nonmanufactured consumer goods.....	42	1.058	118.6	118.8	-	0.3	0.0	0.9	0.2

<sup>1</sup> Relative importance figures are based on 2019 trade values.

NOTES: Data may be revised in each of the 3 months after original publication.

Dash = Not available

**Table 2. U.S. export price indexes and percent changes for selected categories of goods: April 2020 to April 2021**

[2000=100, unless otherwise noted]

Description	End Use	Relative importance Mar. 2021 <sup>1</sup>	Index		Percent change				
			Mar. 2021	Apr. 2021	Annual Apr. 2020 to Apr. 2021	Monthly			
						Dec. 2020 to Jan. 2021	Jan. 2021 to Feb. 2021	Feb. 2021 to Mar. 2021	Mar. 2021 to Apr. 2021
<b>All commodities</b> .....		100.000	134.1	135.2	14.4	2.7	1.6	2.4	0.8
<b>Agricultural commodities</b> .....		10.253	212.2	213.4	25.2	6.0	2.7	2.4	0.6
<b>All exports excluding food and fuels (Dec. 2010=100)</b> .....		77.467	106.9	108.2	7.0	1.5	0.5	1.5	1.2
<b>Nonagricultural commodities</b> .....		89.747	128.2	129.3	13.1	2.3	1.5	2.4	0.9
<b>Foods, feeds, &amp; beverages</b> .....	0	9.431	216.3	217.8	24.7	5.7	2.6	2.8	0.7
Agricultural foods, feeds & beverages, excluding distilled beverages.....	00	8.948	216.4	217.7	26.1	6.0	2.6	2.7	0.6
Nonagricultural foods (fish, distilled beverages).....	01	0.483	218.5	222.6	4.2	0.9	1.4	4.5	1.9
<b>Industrial supplies &amp; materials</b> .....	1	36.099	174.1	177.1	39.2	6.1	3.7	5.8	1.7
Industrial supplies & materials, durable....		10.992	199.6	202.5	20.9	7.0	-1.0	1.9	1.5
Industrial supplies & materials, nondurable.....		25.107	162.7	165.6	49.7	5.7	6.0	7.5	1.8
Agricultural industrial supplies & materials.....	10	1.278	193.5	193.7	20.3	6.3	3.8	0.3	0.1
Nonagricultural industrial supplies & materials.....		34.821	173.5	176.6	40.0	6.1	3.7	6.0	1.8
Fuels & lubricants.....	11	13.102	184.6	181.1	85.4	8.8	9.1	7.7	-1.9
Nonagricultural supplies & materials excluding fuels & building materials....	12	20.774	185.2	192.5	24.6	4.7	0.8	5.0	3.9
Selected building materials.....	13	0.945	144.7	149.7	27.4	4.3	1.7	3.1	3.5
<b>Capital goods</b> .....	2	33.381	112.3	112.6	1.0	0.4	0.4	0.2	0.3
Electrical generating equipment.....	20	3.429	120.2	120.6	0.6	0.1	0.2	0.0	0.3
Nonelectrical machinery.....	21	21.845	95.1	95.5	0.4	0.3	0.2	0.2	0.4
Transportation equipment excluding motor vehicles (Dec. 2001=100).....	22	8.107	189.6	189.6	2.8	1.0	0.9	0.1	0.0
<b>Automotive vehicles, parts &amp; engines</b> .....	3	9.401	115.0	115.2	0.8	0.3	0.0	0.1	0.2
<b>Consumer goods, excluding automotives</b> .....	4	11.688	110.7	110.6	1.0	-0.5	0.2	0.6	-0.1
Nondurables, manufactured.....	40	5.909	109.0	108.7	1.2	-1.0	0.3	0.8	-0.3
Durables, manufactured.....	41	4.582	108.0	108.2	0.5	-0.1	0.0	0.3	0.2
Nonmanufactured consumer goods (Dec. 2018=100).....	42	1.196	95.5	95.7	-	0.0	0.0	1.1	0.2

<sup>1</sup> Relative importance figures are based on 2019 trade values.

NOTES: Data may be revised in each of the 3 months after original publication.

Dash = Not available

**Table 3. U.S. import price indexes and percent changes for selected industries: April 2020 to April 2021**  
 [December 2005=100, unless otherwise noted]

Description	NAICS	Relative importance Mar. 2021 <sup>1</sup>	Index		Percent change				
			Mar. 2021	Apr. 2021	Annual Apr. 2020 to Apr. 2021	Monthly			
						Dec. 2020 to Jan. 2021	Jan. 2021 to Feb. 2021	Feb. 2021 to Mar. 2021	Mar. 2021 to Apr. 2021
<b>Nonmanufacturing.....</b>		8.119	120.7	119.8	103.7	7.5	9.7	6.6	-0.7
<b>Agriculture, forestry, fishing and hunting.....</b>	11	1.974	185.8	189.9	12.4	3.0	1.3	3.9	2.2
Crop production.....	111	1.599	196.4	201.2	11.9	3.0	1.8	3.6	2.4
<b>Mining.....</b>	21	6.145	115.4	113.5	162.7	9.2	12.8	7.5	-1.6
Oil and gas extraction.....	211	5.880	114.9	112.9	176.7	9.5	13.0	8.0	-1.7
Mining (except oil and gas) (Dec. 2020=100).....	212	0.265	112.1	112.3	—	3.1	9.7	-0.9	0.2
<b>Manufacturing.....</b>		91.495	114.7	115.6	5.9	1.0	0.6	0.9	0.8
<b>Manufacturing, part 1.....</b>	31	11.326	128.0	128.9	3.0	0.5	0.6	0.6	0.7
Food manufacturing.....	311	3.641	161.5	165.0	8.3	1.3	0.9	1.4	2.2
Beverage and tobacco product manufacturing.....	312	1.197	131.8	132.1	2.2	0.1	1.9	0.5	0.2
Textile mills (Dec. 2011=100).....	313	0.348	102.6	103.2	4.9	0.0	0.7	0.6	0.6
Textile product mills.....	314	0.930	107.2	107.6	0.7	0.1	0.1	0.3	0.4
Apparel manufacturing.....	315	3.639	113.1	113.0	0.1	0.1	0.1	0.2	-0.1
Leather and allied product manufacturing.....	316	1.571	123.9	123.9	-0.3	0.1	0.2	0.2	0.0
<b>Manufacturing, part 2.....</b>	32	19.203	131.7	134.4	15.2	2.4	1.6	2.3	2.1
Wood product manufacturing (Dec. 2019=100).....	321	1.444	192.7	208.6	113.9	21.6	0.7	9.7	8.3
Paper manufacturing.....	322	0.937	109.4	110.2	4.4	-0.5	0.6	1.9	0.7
Petroleum and coal products manufacturing.....	324	2.419	93.6	99.2	61.3	8.1	7.1	6.8	6.0
Chemical manufacturing.....	325	10.786	142.6	144.3	5.9	0.4	1.1	1.4	1.2
Plastics and rubber products manufacturing.....	326	2.435	123.7	123.4	4.0	0.2	0.6	-0.1	-0.2
Nonmetallic mineral product manufacturing.....	327	0.996	131.9	132.2	0.7	0.5	-0.2	0.4	0.2
<b>Manufacturing, part 3.....</b>	33	60.966	106.8	107.2	3.8	0.8	0.2	0.6	0.4
Primary metal manufacturing.....	331	4.842	212.7	217.0	42.6	5.7	1.7	6.0	2.0
Fabricated metal product manufacturing.....	332	3.228	132.0	133.3	5.6	0.9	1.4	1.2	1.0
Machinery manufacturing.....	333	7.716	120.9	121.4	1.8	0.2	0.1	0.2	0.4
Computer and electronic product manufacturing.....	334	16.113	71.9	72.0	0.1	0.1	0.1	0.1	0.1
Electrical equipment, appliance, and component manufacturing.....	335	5.149	117.8	118.3	0.3	-0.2	-0.1	0.3	0.4
Transportation equipment manufacturing.....	336	16.890	111.0	111.2	1.3	0.5	0.1	0.1	0.2
Furniture and related product manufacturing.....	337	1.729	116.5	116.8	1.3	0.5	0.2	0.3	0.3
Miscellaneous manufacturing.....	339	5.300	120.3	119.8	2.1	0.5	-0.4	-0.3	-0.4

<sup>1</sup> Relative importance figures are based on 2019 trade values.

NOTES: Data may be revised in each of the 3 months after original publication.

Dash = Not available

**Table 4. U.S. export price indexes and percent changes for selected industries: April 2020 to April 2021**  
 [December 2005=100, unless otherwise noted]

Description	NAICS	Relative importance Mar. 2021 <sup>1</sup>	Index		Percent change				
			Mar. 2021	Apr. 2021	Annual Apr. 2020 to Apr. 2021	Monthly			
						Dec. 2020 to Jan. 2021	Jan. 2021 to Feb. 2021	Feb. 2021 to Mar. 2021	Mar. 2021 to Apr. 2021
<b>Nonmanufacturing.....</b>		12.807	150.9	148.3	59.3	9.3	6.7	3.6	-1.7
<b>Agriculture, forestry, fishing and hunting.....</b>	11	5.459	191.2	189.9	34.6	10.0	3.8	2.4	-0.7
Crop production.....	111	5.216	201.3	199.7	35.6	10.6	3.6	2.1	-0.8
<b>Mining.....</b>	21	7.348	86.3	84.0	93.5	8.8	9.0	4.6	-2.7
Mining (except oil and gas).....	212	1.054	100.2	102.8	9.0	4.0	1.3	2.7	2.6
<b>Manufacturing.....</b>		85.262	121.7	123.1	9.2	1.5	1.0	2.0	1.2
<b>Manufacturing, part 1.....</b>	31	6.680	151.5	154.0	11.8	1.4	1.3	2.2	1.7
Food manufacturing.....	311	4.694	173.0	176.6	14.5	1.5	1.7	3.0	2.1
Beverage and tobacco product manufacturing.....	312	0.620	138.9	140.2	14.2	3.4	0.7	0.7	0.9
<b>Manufacturing, part 2.....</b>	32	24.713	121.8	124.9	25.5	2.5	3.1	6.2	2.5
Wood product manufacturing (Dec. 2017=100).....	321	0.509	120.3	126.6	31.6	4.9	2.2	4.7	5.2
Paper manufacturing.....	322	1.429	124.1	130.0	9.9	1.9	1.7	1.2	4.8
Petroleum and coal products manufacturing.....	324	5.820	111.5	110.4	80.1	9.7	9.2	11.9	-1.0
Chemical manufacturing.....	325	13.935	130.0	135.2	18.7	0.4	1.7	5.9	4.0
Plastics and rubber products manufacturing.....	326	2.081	116.9	118.3	0.8	0.1	0.1	0.4	1.2
Nonmetallic mineral product manufacturing.....	327	0.764	123.1	123.8	5.0	1.2	0.2	0.0	0.6
<b>Manufacturing, part 3.....</b>	33	53.869	118.6	119.1	2.7	1.0	0.1	0.3	0.4
Primary metal manufacturing.....	331	4.202	193.8	197.7	24.7	8.0	-1.6	1.5	2.0
Fabricated metal product manufacturing.....	332	2.819	154.4	155.1	3.7	2.1	0.5	0.2	0.5
Machinery manufacturing.....	333	8.752	131.3	132.2	1.3	0.7	0.2	0.2	0.7
Computer and electronic product manufacturing.....	334	12.795	81.6	81.8	-0.8	0.1	0.1	0.0	0.2
Electrical equipment, appliance, and component manufacturing.....	335	3.501	118.7	119.1	1.1	0.1	0.2	0.4	0.3
Transportation equipment manufacturing.....	336	16.483	131.8	132.0	1.7	0.7	0.4	0.1	0.2
Furniture and related product manufacturing (Dec. 2011=100).....	337	0.372	130.2	130.1	4.2	2.2	0.0	0.3	-0.1
Miscellaneous manufacturing.....	339	4.945	120.4	120.6	2.0	0.0	0.1	0.5	0.2

<sup>1</sup> Relative importance figures are based on 2019 trade values.

NOTES: Data may be revised in each of the 3 months after original publication.

Dash = Not available



**Table 5. U.S. import price indexes and percent changes for selected categories of goods: April 2020 to April 2021**

[2000=100, unless otherwise noted]

Description	Harmonized system	Relative importance Mar. 2021 <sup>1</sup>	Index		Percent change				
			Mar. 2021	Apr. 2021	Annual Apr. 2020 to Apr. 2021	Monthly			
						Dec. 2020 to Jan. 2021	Jan. 2021 to Feb. 2021	Feb. 2021 to Mar. 2021	Mar. 2021 to Apr. 2021
<b>Live animals; animal products.....</b>	I	1.394	205.1	211.9	11.9	2.4	0.4	3.1	3.3
Meat and edible meat offal.....	02	0.403	301.4	316.0	25.8	1.3	4.1	4.4	4.8
Fish and crustaceans, molluscs and other aquatic invertebrates.....	03	0.712	139.6	144.5	5.9	3.1	-2.3	3.7	3.5
<b>Vegetable products.....</b>	II	1.994	217.9	222.9	11.4	3.0	1.8	3.5	2.3
Edible vegetables, roots, and tubers.....	07	0.341	388.1	399.9	-7.1	3.8	-1.6	-8.9	3.0
Edible fruit and nuts; peel of citrus fruit or melons.....	08	0.785	122.6	127.9	17.8	5.5	5.5	12.2	4.3
Coffee, tea, mate and spices.....	09	0.371	230.8	224.9	6.2	-0.2	0.9	2.9	-2.6
<b>Animal or vegetable fats and oils (Dec. 2009=100).....</b>	III	0.343	116.7	124.1	46.5	2.8	1.4	7.2	6.3
<b>Prepared foodstuffs, beverages, and tobacco.....</b>	IV	3.045	172.5	173.5	2.5	0.4	1.1	0.3	0.6
Cocoa and cocoa preparations (Dec. 2009=100).....	18	0.209	99.7	98.0	-2.6	-1.4	0.6	-0.1	-1.7
Preparations of vegetables, fruit, nuts, or other parts of plants.....	20	0.349	173.4	174.1	2.0	-0.1	2.7	0.0	0.4
Beverages, spirits, and vinegar.....	22	1.160	144.2	144.7	3.4	0.3	1.8	0.5	0.3
<b>Mineral products.....</b>	V	8.904	222.9	223.8	118.6	8.8	11.2	7.1	0.4
Mineral fuels, oils and residuals, bituminous substances and mineral waxes.....	27	8.554	218.8	219.8	126.8	9.1	11.3	7.4	0.5
<b>Products of the chemical or allied industries.....</b>	VI	10.146	160.9	162.9	5.4	0.0	1.0	1.6	1.2
Inorganic chemicals.....	28	0.584	342.9	371.9	34.9	2.6	6.3	12.8	8.5
Organic chemicals.....	29	2.270	131.5	134.7	10.5	0.8	0.2	2.7	2.4
Pharmaceutical products.....	30	5.196	153.3	153.4	-0.7	-1.3	0.3	0.2	0.1
Fertilizers (Dec. 2020=100).....	31	0.318	122.6	127.8	—	4.4	6.0	10.7	4.2
Miscellaneous chemical products.....	38	0.606	107.9	107.9	7.7	2.2	0.0	-0.1	0.0
<b>Plastics and articles thereof; rubber and articles thereof.....</b>	VII	3.774	150.8	150.8	9.7	0.8	0.5	0.2	0.0
Plastics and articles thereof.....	39	2.488	151.7	152.5	9.5	1.2	1.5	0.5	0.5
Rubber and articles thereof.....	40	1.285	151.5	150.0	10.3	0.3	-1.5	-0.4	-1.0
Articles of leather; travel goods, bags, etc. of various materials.....	42	0.530	131.8	131.8	-0.2	0.1	0.2	0.2	0.0
<b>Wood, wood charcoal, cork, straw, basketware and wickerwork.....</b>	IX	1.482	278.9	303.1	113.6	20.2	1.0	9.8	8.7
Wood and articles of wood; wood charcoal (Dec. 2019=100).....	44	1.438	195.5	213.0	118.0	20.6	1.0	10.1	9.0
<b>Woodpulp, recovered paper, and paper products.....</b>	X	0.957	114.2	114.5	3.4	0.3	0.4	1.7	0.3
Paper and paperboard; articles of paper pulp, paper or paperboard.....	48	0.636	105.5	106.2	0.5	0.5	0.3	0.8	0.7
<b>Textile and textile articles.....</b>	XI	4.724	114.8	114.9	0.4	0.1	0.1	0.3	0.1
Articles of apparel and clothing accessories, knitted or crocheted.....	61	1.911	105.1	105.1	-0.1	0.2	0.0	0.2	0.0
Articles of apparel and clothing accessories, not knitted or crocheted.....	62	1.582	122.4	122.2	0.2	-0.1	0.0	0.2	-0.2
Made-up or worn textile articles.....	63	0.640	100.3	100.3	-0.7	0.0	0.0	0.3	0.0
<b>Headgear, umbrellas, artificial flowers, etc.....</b>	XII	1.350	123.7	123.7	-0.6	0.0	0.1	0.1	0.0
Footwear and parts of such articles.....	64	1.130	122.0	122.0	-0.7	0.0	0.2	0.1	0.0

See footnotes at end of table.

**Table 5. U.S. import price indexes and percent changes for selected categories of goods: April 2020 to April 2021 — Continued**  
 [2000=100, unless otherwise noted]

Description	Harmonized system	Relative importance Mar. 2021 <sup>1</sup>	Index		Percent change				
			Mar. 2021	Apr. 2021	Annual Apr. 2020 to Apr. 2021	Monthly			
						Dec. 2020 to Jan. 2021	Jan. 2021 to Feb. 2021	Feb. 2021 to Mar. 2021	Mar. 2021 to Apr. 2021
<b>Stone, plaster, cement, asbestos, ceramics, glass etc.....</b>	XIII	0.885	131.1	131.6	-0.4	0.2	-0.8	-0.1	0.4
Articles of stone, plaster, cement, asbestos, or mica (Dec. 2020=100).....	68	0.317	98.0	99.0	—	0.2	-1.9	-0.3	1.0
<b>Pearls, stones, precious metals, imitation jewelry, and coins.....</b>	XIV	3.118	243.9	246.6	26.5	4.6	-0.3	3.5	1.1
<b>Base metals and articles of base metals. ...</b>	XV	5.824	196.9	199.3	22.0	3.4	2.4	3.3	1.2
Iron and steel.....	72	1.112	248.2	248.9	28.1	9.2	2.9	4.0	0.3
Articles of iron or steel.....	73	1.678	156.7	159.9	9.5	1.1	2.1	2.5	2.0
Copper and articles thereof.....	74	0.545	386.9	386.5	64.0	2.8	4.1	7.7	-0.1
Aluminum and articles thereof.....	76	1.063	157.6	163.3	35.6	3.3	0.1	3.3	3.6
Tools, implements, cutlery, spoons and forks, of base metal; parts thereof.....	82	0.426	123.4	123.6	0.6	0.3	0.2	0.2	0.2
Miscellaneous articles of base metal.....	83	0.525	137.3	138.3	3.1	1.5	0.4	0.7	0.7
<b>Machinery, electrical equipment, TV image and sound recorders, parts, etc.....</b>	XVI	29.246	79.4	79.6	0.8	0.3	0.1	0.1	0.3
Machinery and mechanical appliances; parts thereof.....	84	15.081	85.3	85.6	1.3	0.2	0.1	0.1	0.4
Electrical machinery and equip, sound and TV recorders & reproducers, parts.....	85	14.165	73.8	74.0	0.4	0.1	0.1	0.1	0.3
<b>Vehicles, aircraft, vessels and associated transport equipment.....</b>	XVII	13.912	115.5	115.8	1.0	0.4	0.1	0.1	0.3
Motor vehicles and their parts.....	87	12.706	114.7	115.0	1.1	0.4	0.0	0.1	0.3
Aircraft, spacecraft, and parts thereof (Dec. 2020=100).....	88	1.109	100.7	100.8	—	-0.1	0.4	0.4	0.1
<b>Optical, photo, measuring, medical &amp; musical instruments; &amp; timepieces.....</b>	XVIII	4.161	102.6	102.2	0.0	0.2	0.1	0.0	-0.4
Optical, photographic, measuring and medical instruments.....	90	3.884	98.7	98.2	-0.1	0.1	0.1	0.0	-0.5
<b>Miscellaneous manufactured articles.....</b>	XX	4.114	111.5	111.6	0.5	0.3	0.0	0.4	0.1
Furniture & stuffed furnishings; lamps & lighting fittings, nesoi; prefab bldgs.....	94	2.541	118.0	117.9	0.9	0.5	0.1	0.4	-0.1
Toys, games and sports equipment; parts and accessories thereof.....	95	1.308	100.8	101.0	-0.7	-0.1	-0.2	0.3	0.2
Miscellaneous manufactured articles.....	96	0.265	127.8	128.4	0.9	0.6	0.0	0.2	0.5

<sup>1</sup> Relative importance figures are based on 2019 trade values.

NOTES: Data may be revised in each of the 3 months after original publication.

Dash = Not available

**Table 6. U.S. export price indexes and percent changes for selected categories of goods: April 2020 to April 2021**

[2000=100, unless otherwise noted]

Description	Harmonized system	Relative importance Mar. 2021 <sup>1</sup>	Index		Percent change				
			Mar. 2021	Apr. 2021	Annual	Monthly			
					Apr. 2020 to Apr. 2021	Dec. 2020 to Jan. 2021	Jan. 2021 to Feb. 2021	Feb. 2021 to Mar. 2021	Mar. 2021 to Apr. 2021
<b>Live animals; animal products.....</b>	I	1.992	234.6	240.9	17.9	1.0	1.9	6.2	2.7
Meat & edible meat offal (Dec. 2006=100)...	02	1.286	192.2	196.6	25.9	3.0	1.1	9.0	2.3
Fish and crustaceans, mollusks and aquatic invertebrates (Dec. 2016=100).....	03	0.300	116.9	120.7	2.6	1.2	0.9	5.1	3.3
Dairy products, eggs and honey (Dec. 2020=100).....	04	0.337	98.7	103.0	-	-5.5	6.0	-1.5	4.4
<b>Vegetable products.....</b>	II	5.002	250.9	248.9	35.0	9.8	3.4	2.1	-0.8
Edible fruit and nuts; peel of citrus fruit or melons.....	08	0.982	146.4	142.4	11.4	4.6	3.2	4.7	-2.7
Cereals.....	10	1.393	257.8	254.7	37.2	11.5	6.2	-0.3	-1.2
Oilseeds and misc. grains, seeds, fruits, plants, straw and fodder.....	12	2.202	281.3	280.0	50.1	11.8	2.0	2.7	-0.5
<b>Prepared foodstuffs, beverages, and tobacco.....</b>	IV	2.947	165.7	168.7	13.1	2.4	0.8	0.9	1.8
Miscellaneous edible preparations (Dec. 2017=100).....	21	0.590	100.9	101.0	1.8	0.3	-0.2	0.1	0.1
Beverages, spirits, and vinegar (Dec. 2008=100).....	22	0.497	110.0	110.6	17.5	0.3	0.4	0.0	0.5
Residues and waste from the food industries; prepared animal feed.....	23	0.827	284.2	297.6	38.2	8.3	3.0	3.2	4.7
<b>Mineral products.....</b>	V	13.102	223.7	219.7	85.9	9.0	8.9	7.6	-1.8
Ores, slag and ash (Dec. 2012=100).....	26	0.536	116.7	122.5	43.1	5.4	1.2	3.1	5.0
Mineral fuels, oils and residuals, bituminous substances and mineral waxes.....	27	12.407	213.6	209.0	91.2	9.4	9.4	7.9	-2.2
<b>Products of the chemical or allied industries.....</b>	VI	11.036	145.0	147.8	9.3	-0.4	0.9	2.5	1.9
Inorganic chemicals.....	28	0.654	139.4	139.8	1.5	1.5	0.9	0.7	0.3
Organic chemicals.....	29	2.785	168.2	177.8	32.3	0.2	3.1	5.4	5.7
Pharmaceutical products.....	30	3.331	110.1	109.4	2.9	-1.1	0.3	1.5	-0.6
Essential oils and resinoids; perfumery cosmetic or toilet preparations.....	33	0.833	130.0	131.4	2.7	1.1	0.1	0.1	1.1
Soap; lubricants; waxes, polishing or scouring products; candles, pastes.....	34	0.428	125.7	125.7	0.1	-0.2	0.6	0.0	0.0
Miscellaneous chemical products.....	38	1.927	161.4	166.7	6.2	-0.7	0.1	3.9	3.3
<b>Plastics and articles thereof; rubber and articles thereof.....</b>	VII	5.516	165.0	175.3	25.9	2.1	3.0	7.9	6.2
Plastics and articles thereof.....	39	4.709	166.2	178.2	31.0	2.4	3.5	9.3	7.2
Rubber and articles thereof.....	40	0.807	152.9	153.9	1.8	0.3	0.3	0.4	0.7
<b>Wood, wood charcoal, cork, straw, baskets and wickerwork (Dec. 2014=100).....</b>	IX	0.607	117.1	122.4	28.8	4.5	2.1	3.8	4.5
<b>Woodpulp, recovered paper, and paper products.....</b>	X	1.777	130.1	136.4	12.9	2.7	0.2	1.7	4.8
Woodpulp and recovered paper (Dec. 2019=100).....	47	0.615	139.3	153.8	37.9	4.4	3.3	5.0	10.4
Paper and paperboard; articles of paper pulp, paper or paperboard.....	48	0.917	125.9	128.8	4.5	2.0	0.5	0.1	2.3
<b>Textile and textile articles.....</b>	XI	1.659	126.0	125.2	8.4	2.1	2.0	1.0	-0.6
Cotton, including yarns and woven fabrics thereof.....	52	0.560	138.1	134.9	32.0	7.5	5.8	2.9	-2.3
<b>Stone, plaster, cement, asbestos, ceramics, glass etc.....</b>	XIII	0.768	135.0	135.2	7.0	1.8	0.0	0.2	0.1
Glass and glassware (Dec. 2019=100).....	70	0.418	99.4	99.6	-0.3	-0.1	0.0	0.3	0.2

See footnotes at end of table.

**Table 6. U.S. export price indexes and percent changes for selected categories of goods: April 2020 to April 2021 — Continued**

[2000=100, unless otherwise noted]

Description	Harmonized system	Relative importance Mar. 2021 <sup>1</sup>	Index		Percent change				
			Mar. 2021	Apr. 2021	Annual	Monthly			
					Apr. 2020 to Apr. 2021	Dec. 2020 to Jan. 2021	Jan. 2021 to Feb. 2021	Feb. 2021 to Mar. 2021	Mar. 2021 to Apr. 2021
<b>Pearls, stones, precious metals, imitation jewelry, and coins.....</b>	XIV	4.489	310.2	315.0	16.5	4.6	-1.5	0.3	1.5
<b>Base metals and articles of base metals. ...</b>	XV	4.970	189.5	189.7	26.2	10.0	-0.7	3.7	0.1
Iron and steel (Dec. 2020=100).....	72	1.193	136.9	134.6	—	33.1	-3.7	6.8	-1.7
Copper and articles thereof.....	74	0.629	251.7	252.4	65.7	5.2	-1.2	11.2	0.3
Aluminum and articles thereof.....	76	0.866	133.5	135.2	43.4	8.4	0.0	3.6	1.3
<b>Machinery, electrical equipment, TV image and sound recorders, parts, etc.....</b>	XVI	26.542	98.4	98.8	0.7	0.5	0.3	0.1	0.4
Machinery and mechanical appliances; parts thereof.....	84	15.881	117.0	117.7	1.3	1.0	0.4	0.2	0.6
Electrical machinery and equipment and parts and accessories thereof.....	85	10.661	78.4	78.4	-0.4	-0.3	0.0	0.0	0.0
<b>Vehicles, aircraft, vessels and associated transport equipment.....</b>	XVII	12.042	139.4	139.7	1.3	0.4	0.1	0.1	0.2
Motor vehicles and their parts.....	87	7.799	117.3	117.7	1.0	0.4	0.1	0.1	0.3
<b>Optical, photo, measuring, medical &amp; musical instruments; &amp; timepieces.....</b>	XVIII	5.736	110.3	110.3	0.1	0.0	0.1	-0.1	0.0
<b>Miscellaneous manufactured articles.....</b>	XX	1.229	116.6	116.8	2.4	1.7	0.7	0.2	0.2
Furniture; stuffed furnishings; lamps and lighting fittings nesoi;.....	94	0.692	137.7	137.7	3.7	2.5	0.1	0.3	0.0
Toys, games and sports equipment; parts and accessories thereof.....	95	0.388	89.0	89.6	0.6	0.8	1.3	0.0	0.7

<sup>1</sup> Relative importance figures are based on 2019 trade values.

NOTES: Data may be revised in each of the 3 months after original publication.

Dash = Not available

**Table 7. U.S. import price indexes and percent changes by locality of origin: April 2020 to April 2021**  
 [2000=100, unless otherwise noted]

Description	Relative importance Mar. 2021 <sup>1</sup>	Index		Percent change				
		Mar. 2021	Apr. 2021	Annual Apr. 2020 to Apr. 2021	Monthly			
					Dec. 2020 to Jan. 2021	Jan. 2021 to Feb. 2021	Feb. 2021 to Mar. 2021	Mar. 2021 to Apr. 2021
<b>Industrialized Countries<sup>2</sup></b> .....	100.000	135.3	136.0	16.9	2.3	1.6	2.0	0.5
Nonmanufacturing.....	9.491	203.3	200.0	189.9	6.2	11.5	8.0	-1.6
Manufacturing.....	89.655	129.0	130.1	8.7	1.7	0.8	1.4	0.9
<b>Canada</b> .....	100.000	157.7	159.4	50.0	5.4	3.8	4.4	1.1
Nonmanufacturing.....	25.971	200.3	196.8	214.9	6.4	12.0	8.2	-1.7
Manufacturing.....	72.706	149.0	152.2	22.5	4.6	1.5	3.0	2.1
<b>European Union</b> .....	100.000	143.6	143.7	5.6	0.8	0.8	1.1	0.1
Manufacturing.....	98.780	139.3	139.6	5.5	0.7	0.6	1.0	0.2
<b>France (Dec. 2003=100)</b> .....	100.000	132.4	132.3	4.7	-0.2	1.6	0.4	-0.1
<b>Germany (Dec. 2003=100)</b> .....	100.000	118.2	117.6	3.6	1.0	0.5	1.2	-0.5
<b>United Kingdom (Dec. 2003=100)</b> .....	100.000	130.3	130.0	9.9	1.5	1.4	2.4	-0.2
<b>Latin America<sup>3</sup></b> .....	100.000	150.9	151.8	10.9	1.2	1.2	1.3	0.6
Nonmanufacturing.....	13.441	264.0	265.7	70.0	5.6	6.9	6.1	0.6
Manufacturing.....	86.284	123.7	124.4	4.8	0.7	0.4	0.7	0.6
<b>Mexico (Dec. 2003=100)</b> .....	100.000	130.3	131.2	5.9	0.8	0.8	0.9	0.7
Nonmanufacturing (Dec. 2008=100).....	8.182	146.3	152.4	72.8	5.5	10.1	10.8	4.2
Manufacturing (Dec. 2008=100).....	91.572	89.4	89.7	2.3	0.5	0.1	0.1	0.3
<b>Pacific Rim (Dec. 2003=100)<sup>4</sup></b> .....	100.000	99.4	99.7	2.2	0.4	0.3	0.4	0.3
<b>China (Dec. 2003=100)</b> .....	100.000	99.8	100.2	2.1	0.4	0.3	0.4	0.4
<b>Japan</b> .....	100.000	97.9	98.3	1.7	0.3	0.1	0.3	0.4
<b>Taiwan (Dec. 2018=100)</b> .....	100.000	100.5	101.4	3.9	0.4	0.6	1.0	0.9
<b>Asian NICs<sup>5</sup></b> .....	100.000	89.0	89.5	5.2	0.9	0.9	1.1	0.6
<b>ASEAN (Dec. 2003=100)<sup>6</sup></b> .....	100.000	99.1	99.0	1.5	0.4	-0.1	0.0	-0.1
<b>Asia Near East (Dec. 2003=100)<sup>7</sup></b> .....	100.000	182.2	182.9	40.7	7.0	3.0	4.6	0.4

<sup>1</sup> Relative importance figures are based on 2019 trade values.

<sup>2</sup> Western Europe, Canada, Japan, Australia, New Zealand, and South Africa.

<sup>3</sup> Mexico, Central America, South America, and the Caribbean.

<sup>4</sup> China, Japan, Australia, Brunei, Indonesia, Macao, Malaysia, New Zealand, Papua New Guinea, Philippines, and the Asian Newly Industrialized Countries.

<sup>5</sup> Asian Newly Industrialized Countries - Hong Kong, Singapore, South Korea, and Taiwan.

<sup>6</sup> Association of Southeast Asian Nations - Brunei, Cambodia, Indonesia, Laos, Malaysia, Myanmar, Philippines, Singapore, Thailand, and Vietnam.

<sup>7</sup> Bahrain, Iran, Iraq, Israel, Jordan, Kuwait, Lebanon, Oman, Qatar, Saudi Arabia, Syria, United Arab Emirates, and Yemen.

NOTES: Data may be revised in each of the 3 months after original publication.

Regions are not mutually exclusive.

Dash = Not available

**Table 8. U.S. export price indexes and percent changes by locality of destination: April 2020 to April 2021**  
 [December 2017=100, unless otherwise noted]

Description	Relative importance Mar. 2021 <sup>1</sup>	Index		Percent change				
		Mar. 2021	Apr. 2021	Annual Apr. 2020 to Apr. 2021	Monthly			
					Dec. 2020 to Jan. 2021	Jan. 2021 to Feb. 2021	Feb. 2021 to Mar. 2021	Mar. 2021 to Apr. 2021
<b>Industrialized Countries<sup>2</sup></b> .....	100.000	107.8	108.4	10.3	1.3	0.8	1.1	0.6
Nonmanufacturing.....	11.478	116.5	115.2	66.2	8.3	6.7	2.6	-1.1
Manufacturing.....	86.880	106.6	107.6	5.6	0.5	0.1	0.9	0.9
<b>Canada</b> .....	100.000	110.8	112.2	14.1	2.1	1.5	1.4	1.3
Nonmanufacturing (Dec. 2020=100).....	9.376	120.8	120.2	–	10.7	8.0	1.0	-0.5
Manufacturing (Dec. 2020=100).....	89.283	103.7	105.3	–	1.3	0.9	1.5	1.5
<b>European Union</b> .....	100.000	108.9	109.1	9.1	1.5	1.5	1.1	0.2
Nonmanufacturing.....	13.110	114.1	112.4	74.0	10.7	8.5	5.2	-1.5
Manufacturing.....	85.406	107.2	107.7	3.6	0.3	0.6	0.5	0.5
<b>Germany</b> .....	100.000	108.7	108.3	4.0	0.9	0.0	0.2	-0.4
<b>Latin America<sup>3</sup></b> .....	100.000	110.2	111.4	21.2	4.2	2.6	4.5	1.1
Nonmanufacturing.....	9.661	141.2	136.8	51.8	12.0	6.5	1.6	-3.1
Manufacturing.....	89.939	107.7	109.4	18.9	3.3	2.2	4.8	1.6
<b>Mexico</b> .....	100.000	108.8	111.5	20.0	3.2	2.4	3.6	2.5
Nonmanufacturing.....	8.031	128.9	127.0	43.8	8.1	6.3	-2.9	-1.5
Manufacturing.....	91.602	107.5	110.6	18.8	2.9	2.1	4.3	2.9
<b>Pacific Rim<sup>4</sup></b> .....	100.000	106.7	107.0	12.2	2.0	1.1	2.4	0.3
Nonmanufacturing.....	16.896	110.0	110.1	54.4	9.6	5.5	3.0	0.1
Manufacturing.....	80.254	105.2	105.4	5.0	0.2	0.2	2.1	0.2
<b>China</b> .....	100.000	105.9	106.5	16.0	0.3	1.0	3.8	0.6
Nonmanufacturing.....	15.179	110.1	109.9	102.0	12.7	4.0	4.0	-0.2
Manufacturing.....	82.863	106.5	107.2	7.5	-1.7	0.6	3.7	0.7
<b>Japan</b> .....	100.000	107.3	107.4	15.2	2.2	1.6	1.3	0.1
Nonmanufacturing.....	22.472	116.7	115.6	86.2	10.7	8.1	2.9	-0.9
Manufacturing.....	75.080	102.5	102.7	2.2	0.1	-0.1	0.2	0.2

<sup>1</sup> Relative importance figures are based on 2019 trade values.

<sup>2</sup> Western Europe, Canada, Japan, Australia, New Zealand, and South Africa.

<sup>3</sup> Mexico, Central America, South America, and the Caribbean.

<sup>4</sup> China, Japan, Australia, Brunei, Indonesia, Macao, Malaysia, New Zealand, Papua New Guinea, Philippines, and the Asian Newly Industrialized Countries.

NOTES: Data may be revised in each of the 3 months after original publication.

Regions are not mutually exclusive.

Dash = Not available

**Table 9. U.S. terms of trade indexes and percent changes by locality: April 2020 to April 2021<sup>1</sup>**  
 [December 2017=100, unless otherwise noted]

Description	Index		Percent change				
	Mar. 2021	Apr. 2021	Annual	Monthly			
			Apr. 2020 to Apr. 2021	Dec. 2020 to Jan. 2021	Jan. 2021 to Feb. 2021	Feb. 2021 to Mar. 2021	Mar. 2021 to Apr. 2021
<b>Industrialized Countries<sup>2</sup></b> .....	97.5	97.6	-5.7	-0.9	-0.8	-0.9	0.1
<b>Canada</b> .....	92.3	92.5	-23.9	-3.1	-2.3	-2.8	0.2
<b>European Union</b> .....	102.1	102.2	3.3	0.8	0.7	0.1	0.1
<b>Germany</b> .....	105.8	106.0	0.4	-0.1	-0.6	-1.0	0.2
<b>Latin America<sup>3</sup></b> .....	108.7	109.3	9.3	3.0	1.3	3.0	0.6
<b>Mexico</b> .....	107.7	109.6	13.3	2.4	1.6	2.8	1.8
<b>Pacific Rim<sup>4</sup></b> .....	105.6	105.6	9.8	1.6	0.8	1.9	0.0
<b>China</b> .....	106.2	106.4	13.6	-0.1	0.7	3.4	0.2
<b>Japan</b> .....	104.7	104.3	13.4	1.9	1.5	1.1	-0.4

<sup>1</sup> Terms of trade indexes are derived by dividing the export price index by the corresponding import price index and multiplying by 100.

<sup>2</sup> Western Europe, Canada, Japan, Australia, New Zealand, and South Africa.

<sup>3</sup> Mexico, Central America, South America, and the Caribbean.

<sup>4</sup> China, Japan, Australia, Brunei, Indonesia, Macao, Malaysia, New Zealand, Papua New Guinea, Philippines, and the Asian Newly Industrialized Countries.

NOTES: Data may be revised in each of the 3 months after original publication.

Regions are not mutually exclusive.

Dash = Not available

**Table 10. U.S. international price indexes and percent changes for selected transportation services: April 2020 to April 2021**

[2000=100, unless otherwise noted]

Description	Relative importance Mar. 2021 <sup>1</sup>	Index		Percent change					
		Mar. 2021	Apr. 2021	Annual Apr. 2020 to Apr. 2021	Monthly				
					Dec. 2020 to Jan. 2021	Jan. 2021 to Feb. 2021	Feb. 2021 to Mar. 2021	Mar. 2021 to Apr. 2021	
<b>Air Freight</b>									
<b>Import Air Freight</b> .....	100.000	298.7	323.6	28.0	-5.8	0.7	-1.9	8.3	
Europe (Dec. 2003=100).....	25.408	246.4	248.8	14.0	2.4	0.0	-0.6	1.0	
Asia.....	67.028	307.2	330.8	34.1	-9.2	1.1	-2.6	7.7	
<b>Export Air Freight</b> .....	100.000	169.0	164.3	0.6	1.4	-0.7	1.2	-2.8	
Europe (Dec. 2006=100).....	32.579	153.0	140.8	-7.2	-4.5	8.2	0.3	-8.0	
Asia (Dec. 2011=100).....	39.955	117.8	117.1	1.4	0.2	-4.6	3.0	-0.6	
<b>Inbound Air Freight</b> .....	100.000	232.6	245.9	18.5	-1.4	-1.9	-1.3	5.7	
Europe (Dec. 2003=100).....	24.139	173.0	173.8	4.8	5.4	-2.4	-0.4	0.5	
Asia.....	65.998	239.3	251.5	24.8	-3.8	-1.9	-1.8	5.1	
<b>Outbound Air Freight</b> .....	100.000	163.6	161.1	2.4	-0.1	7.6	0.6	-1.5	
Europe (Dec. 2003=100).....	30.738	172.4	162.0	-8.1	-3.9	7.0	0.2	-6.0	
Asia.....	49.977	164.4	163.6	8.0	0.0	12.4	1.1	-0.5	
<b>Air Passenger Fares</b>									
<b>Import Air Passenger Fares</b> .....	100.000	145.9	147.2	8.0	-5.6	1.9	-3.6	0.9	
Europe.....	40.076	143.6	146.4	8.9	-4.4	6.5	2.2	1.9	
Asia.....	31.987	165.2	160.4	27.8	-5.4	-4.2	-9.1	-2.9	
Latin America/Caribbean.....	6.063	98.8	111.1	-23.3	-17.4	-0.2	-0.7	12.4	
<b>Export Air Passenger Fares</b> .....	100.000	160.0	160.3	26.9	11.2	-4.7	-1.5	0.2	
Europe.....	28.215	188.1	183.8	28.1	3.7	5.3	-4.6	-2.3	
Asia.....	32.176	186.6	170.8	51.7	23.4	-6.9	-1.2	-8.5	
Latin America/Caribbean.....	19.490	127.4	145.1	-2.5	11.0	-17.3	-1.0	13.9	

<sup>1</sup> Relative importance figures are based on 2019 trade values.

NOTES: Data may be revised in each of the 3 months after original publication.

Dash = Not available



## TECHNICAL NOTE

**Import and Export Goods and Services Price Indexes** - All indexes use a modified Laspeyres formula and are not seasonally adjusted. Price indexes are reweighted annually, with a 2-year lag in the weights. Published series use a base year of 2000=100 where possible. More detailed index series and additional information may be obtained at [www.bls.gov/mxp](http://www.bls.gov/mxp) or by calling (202) 691-7101.

**Merchandise Goods Classification Systems** - The merchandise price indexes are published using three classification systems. Items are classified by end use according to the Bureau of Economic Analysis Classification System, by industry according to the North American Industry Classification System (NAICS), and by product category according to the Harmonized System (HS). While classification by end use and product category are self-explanatory, some notes are in order for classifying items by industry. In the NAICS imports and exports tables, items are classified by output industry, not input industry. As an example, NAICS import index 326 (plastics and rubber products manufacturing) includes outputs such as manufactured plastic rather than inputs such as petroleum. The NAICS classification structure also matches the classification system used by the Producer Price Index (PPI) to produce the NAICS primary products indexes.

**Import Price Goods Indexes** - Items are classified by the Harmonized Tariff Schedule of the United States Annotated (TSUSA). Import prices are based on U.S. dollar prices paid by the U.S. importer. The prices are generally either "free on board" (f.o.b.) foreign port or "cost, insurance, and freight" (c.i.f.) U.S. port transaction prices, depending on the practices of the individual industry. The index for crude petroleum is calculated from data collected by the U.S. Department of Energy.

**Export Price Goods Indexes** - Items are classified by the Harmonized Schedule B classification system of the U.S. Bureau of the Census. The prices used are generally either "free alongside ship" (f.a.s.) factory or "free on board" (f.o.b.) transaction prices, depending on the practices of the individual industry. Prices used in the grain index, excluding rice, are obtained from the U.S. Department of Agriculture.

**Services Price Indexes** - Indexes for import and export air passenger fares calculate changes in the average revenue received per passenger by foreign carriers from U.S. residents and by U.S. carriers from foreign residents, respectively. Data are obtained from an airline consulting service and report on tickets sold by travel agencies, travel websites, and directly by the airlines. Taxes and fees are included in both the import and export air passenger fares indexes. Import air passenger fares data have used the airline consulting service source since September 2008. Before April 2018, the export air passenger fares data were collected directly by BLS from U.S. airlines. The air freight indexes are calculated from data collected directly from airlines. These data exclude mail and passenger baggage. The scope of the service being priced is the movement of freight from airport to airport only, and does not include any ground transportation or port service. The air freight indexes are presented using two definitions: balance of payments (which represents transactions between U.S. and foreign residents) and international (which represents transactions inbound to and outbound from the United States.) Fact sheets specifying detailed information for each services industry are available at [www.bls.gov/mxp](http://www.bls.gov/mxp) under "MXP Publications."

**Import Price Indexes by Locality of Origin** - Prices used in these indexes are a subset of the data collected for the import price indexes. The indexes are specific to a country, region, or grouping and, beginning with January 2002, are based on the North American Industry Classification System (NAICS) covering goods-producing industries. Nonmanufactured goods are defined as NAICS 11 and 21, and manufactured goods are defined as NAICS 31-33.

**Export Price Indexes by Locality of Destination** - Prices used in these indexes are a subset of the data collected for the export price indexes. The indexes are specific to a country, region, or grouping and are based on the North American Industry Classification System (NAICS) covering goods-producing industries. Nonmanufactured goods are defined as NAICS 11 and 21, and manufactured goods are defined as NAICS 31-33.

**Terms of Trade Indexes** - Terms of trade indexes measure the relative price of exports in terms of import prices for a specific country, region, or grouping. The indexes are calculated as one country, region, or grouping's all-export goods price index divided by the corresponding all-import goods price index on a scale of 100.

**Relative Importance** - A relative importance is a specific index's price-updated value share (expressed as a percentage) of overall imports or exports at a specific point in time. Relative importance values are affected by the trade weights at the point indexes are reweighted and index changes relative to other indexes since the reweight point. If an index is rising in value relative to other indexes over time, the relative importance will increase as well.

**Revision Policy** - To reflect the availability of late reports and corrections by respondents, monthly data may be revised in each of the 3 months after original publication. After 3 months, no further data revisions take place. For example, data first published in the January release will be subject to revision in the releases for February, March, and April.

**Rounding Policy** - Index values are rounded to the tenth decimal place after being calculated. All percent changes are then derived from the rounded index values and subsequently rounded to the tenth decimal place.

**Uses of the Data** - The primary use of the indexes is to deflate trade statistics, notably the foreign trade sector of the National Income and Product Accounts (NIPA) constructed by the Department of Commerce. Other published indexes are useful for general market analysis. For trade in international services, balance of payments indexes are used for deflating NIPA, while international indexes are more appropriate for market analysis.

**Email Subscription** - The U.S. import and export price indexes news release is available through an email subscription service at [www.bls.gov/bls/list.htm](http://www.bls.gov/bls/list.htm).

**Additional Information** - More detailed data are available on the Import/Export Price Indexes home page at [www.bls.gov/mxp](http://www.bls.gov/mxp). For import and export price indexes data requests, send an email to [mxpinfo@bls.gov](mailto:mxpinfo@bls.gov).

Information from this release will be made available to sensory impaired individuals upon request. Voice phone: (202)-691-5200; Federal Relay Service: 1-(800)-877-8339.