

Transmission of material in this release is embargoed until
8:30 a.m. (EDT) Thursday, July 11, 2013

USDL-13-1312

Technical information: (202) 691-7101 • MXPinfo@bls.gov • www.bls.gov/mxp
Media contact: (202) 691-5902 • PressOffice@bls.gov

U.S. IMPORT AND EXPORT PRICE INDEXES – JUNE 2013

Prices for U.S. imports decreased 0.2 percent in June, the U.S. Bureau of Labor Statistics reported today, following a 0.7 percent decline in May. In June, a drop in nonfuel prices more than offset increasing fuel prices. The price index for U.S. exports edged down 0.1 percent in June, after a 0.5 percent decrease the previous month.

Chart 1. One-month percent change in the Import Price Index: June 2012 – June 2013

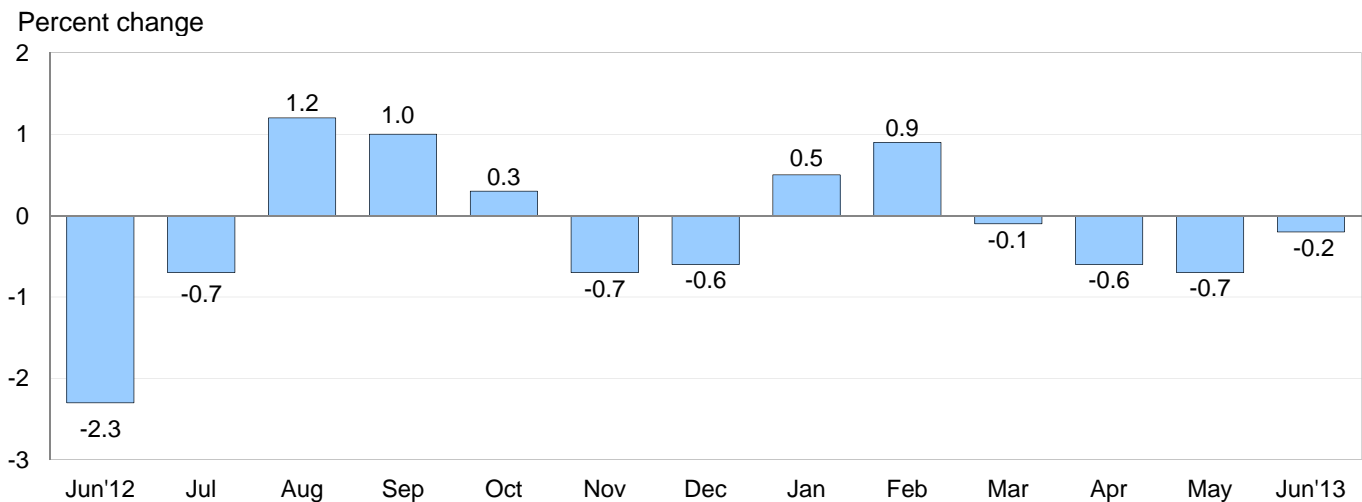
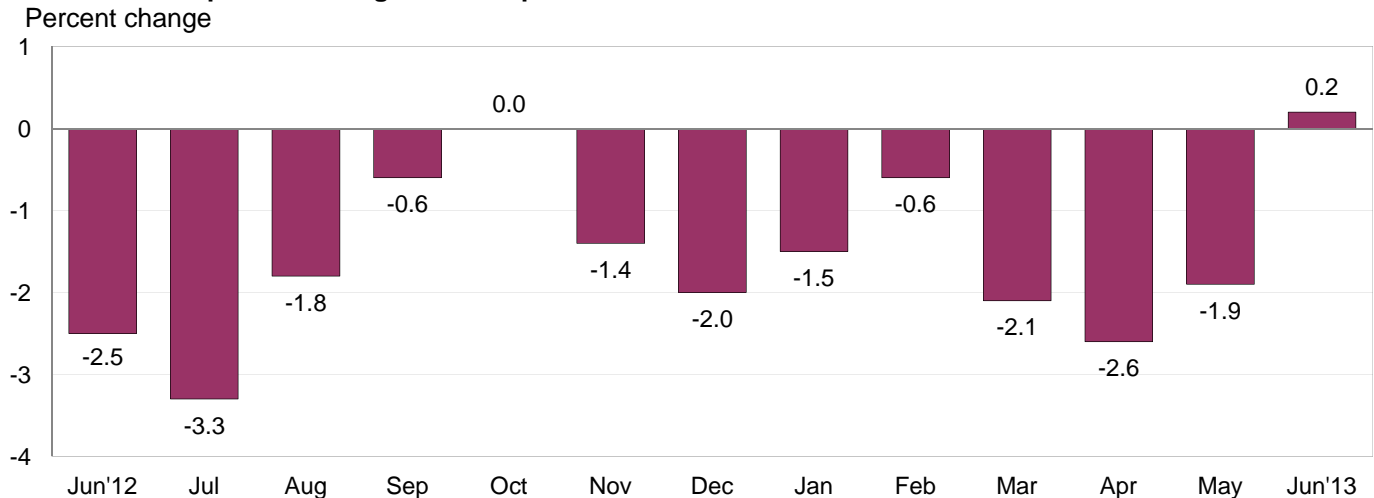


Chart 2. 12-month percent change in the Import Price Index: June 2012 – June 2013



All Imports: Import prices fell 0.2 percent in June following decreases of 0.7 percent in May, 0.6 percent in April, and 0.1 percent in March. Unlike the May and April declines where lower fuel prices contributed to the decreases, the June drop resulted solely from lower nonfuel prices. Despite the decline over the past four months, overall import prices rose 0.2 percent for the year ended in June following a 1.9 percent decrease from May 2012 to May 2013.

Fuel Imports: Import fuel prices ticked up 0.1 percent in June following a 1.9 percent drop in May and a 2.4 percent decline in April. The June rise was led by a 0.2 percent advance in petroleum prices, following a 2.0 percent drop the previous month. In contrast, natural gas prices decreased 1.2 percent in June. Prices for import fuel rose 4.6 percent over the past year, after falling 11.5 percent between June 2011 and June 2012. A 2.9 percent rise in petroleum prices and a 93.3 percent advance in natural gas prices each contributed to the 12-month increase in fuel prices.

All Imports Excluding Fuel: In contrast to fuel prices, nonfuel prices continued to decline in June, falling 0.3 percent, after decreases of 0.3 percent in May, 0.2 percent in April, and 0.1 percent in March. In June, lower prices for nonfuel industrial supplies and materials; foods, feeds, and beverages; and each of the major finished goods categories all contributed to the overall decline in nonfuel prices. The price index for nonfuel imports fell 1.0 percent over the past year, primarily driven by a 4.2 percent drop in nonfuel industrial supplies and materials prices.

Table A. Import and export price indexes, selected categories
Percent changes

Month	IMPORTS			EXPORTS		
	All imports	Fuel imports	Nonfuel imports	All exports	Agricultural exports	Non-agricultural exports
2012						
June.....	-2.3	-8.5	-0.3	-1.7	-3.5	-1.5
July.....	-0.7	-2.0	-0.4	0.4	6.0	-0.2
August.....	1.2	6.1	-0.2	0.9	4.8	0.4
September.....	1.0	3.9	0.2	0.8	1.3	0.7
October.....	0.3	0.1	0.2	0.1	-1.7	0.3
November.....	-0.7	-2.2	-0.2	-0.6	0.5	-0.7
December.....	-0.6	-2.2	-0.1	-0.1	0.1	-0.2
2013						
January.....	0.5	1.9	0.2	0.4	-1.2	0.5
February.....	0.9	3.6	0.1	0.7	2.0	0.6
March.....	-0.1	0.0 ^r	-0.1	-0.5	-1.8	-0.3
April.....	-0.6 ^r	-2.4 ^r	-0.2	-0.7	-2.3	-0.5
May.....	-0.7 ^r	-1.9	-0.3	-0.5	1.1 ^r	-0.7
June.....	-0.2	0.1	-0.3	-0.1	0.6	-0.2
June 2011 to 2012.....	-2.5	-11.5	0.6	-2.1	-5.8	-1.6
June 2012 to 2013.....	0.2	4.6	-1.0	0.8	9.3	-0.3

r Revised

Chart 3. One-month percent change in the Export Price Index: June 2012 – June 2013

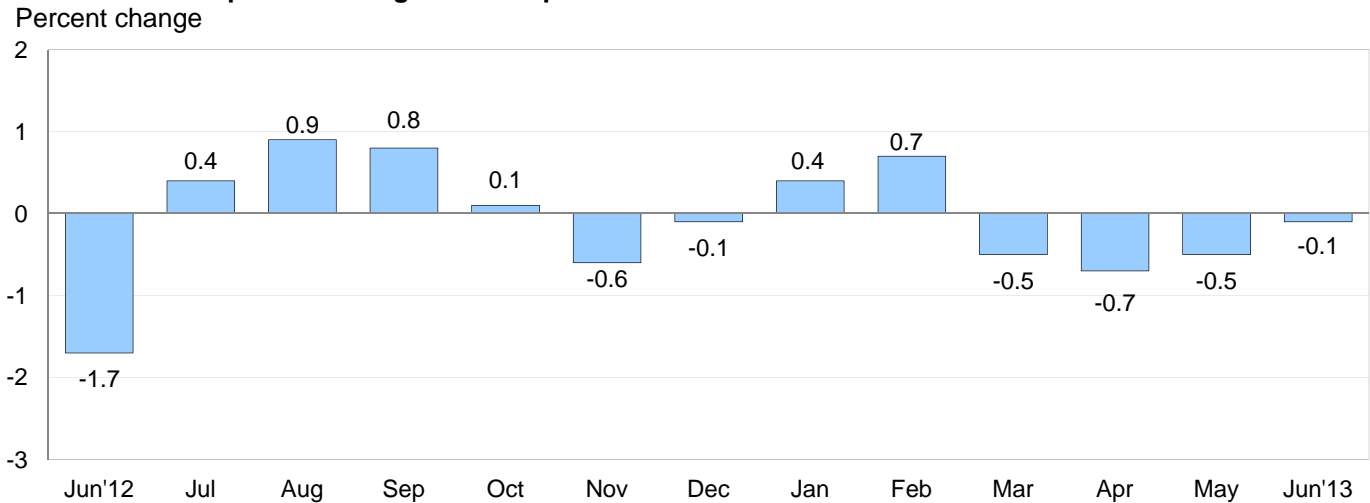
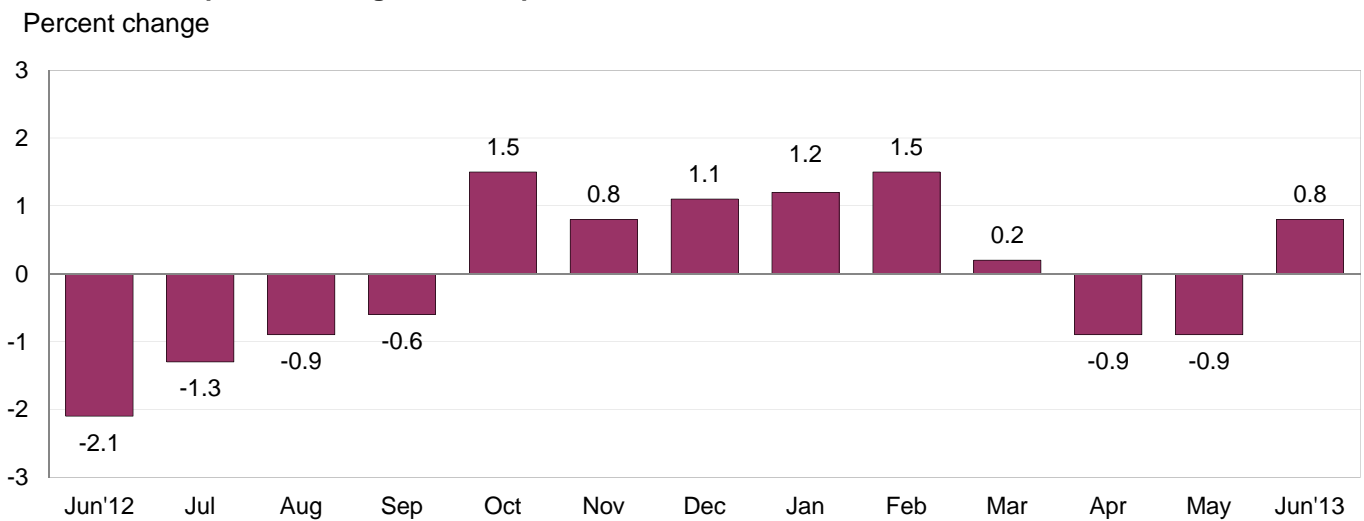


Chart 4. 12-month percent change in the Export Price Index: June 2012 – June 2013



All Exports: U.S. export prices edged down 0.1 percent in June following declines of 0.5 percent, 0.7 percent, and 0.5 percent the three previous months. In June, decreasing nonagricultural prices more than offset an increase in the price index for agricultural exports. Overall export prices increased 0.8 percent for the year ended in June, after decreasing 0.9 percent for the year ended in May.

Agricultural Exports: Agricultural prices advanced 0.6 percent in June following a 1.1 percent increase in May. The June rise was led by a 5.3 percent advance in soybean prices, a 2.3 percent increase in corn prices, and a 4.7 percent rise in nut prices. Prices for agricultural exports increased 9.3 percent between June 2012 and June 2013.

All Exports Excluding Agriculture: The price index for nonagricultural exports declined 0.2 percent in June, driven by a 0.5 percent drop in nonagricultural industrial supplies and materials prices. The June decline followed decreases of 0.7 percent in May and 0.5 percent in April. Nonagricultural prices also fell for the year ended in June, declining 0.3 percent.

SELECTED JUNE HIGHLIGHTS

Import Prices

Imports by Locality of Origin: Import prices from Japan continued to fall in June, declining 0.5 percent. Prices for imports from Japan have decreased 2.2 percent over the first half of 2013, and have paralleled the drop in the value of the yen compared to the U.S. dollar. The price index for imports from China edged down 0.1 percent for the third consecutive month in June, and has not recorded a monthly advance since February 2012. Import prices from China fell 1.0 percent over the past 12 months. Prices for imports from Mexico, Canada, and the European Union also decreased in June, falling 0.5 percent, 0.2 percent, and 0.1 percent, respectively.

Nonfuel Industrial Supplies and Materials: The price index for nonfuel industrial supplies and materials declined 1.0 percent in June following a 1.3 percent drop in May. In June, a 1.7 percent drop in unfinished metals prices was the largest contributor to the decline. Building materials prices also fell in June, down 3.4 percent, led by lower lumber prices.

Finished Goods: Each of the major finished goods categories recorded decreases in June. Automotive vehicles prices fell 0.3 percent, driven by a 0.6 percent decline in parts prices. The price indexes for consumer goods and capital goods both edged down 0.1 percent.

Foods, Feeds, and Beverages: Foods, feeds, and beverages prices declined 1.2 percent in June, after rising 0.4 percent in May. The June decrease was led by a 7.0 percent drop in fruit prices. Lower coffee and vegetable prices also contributed to the decline.

Transportation Services: Import air passenger fares rose 10.7 percent in June following increases of 2.0 percent in May and 0.3 percent in April. The June advance was driven by a 14.6 percent jump in European fares and an 11.4 percent rise in Asian fares. The recent increases led import air passenger fares up 2.9 percent over the past year. In contrast, import air freight prices fell 0.3 percent in June and 3.8 percent over the past 12 months.

Export Prices

Nonagricultural Industrial Supplies and Materials: Prices for nonagricultural industrial supplies and materials decreased 0.5 percent in June, after a 1.7 percent decline the previous month. The drop was driven by a 2.5 percent decrease in nonferrous metals prices; lower chemicals prices were also a contributing factor.

Finished Goods: The major finished goods categories recorded little price movement in June; consumer goods prices fell 0.1 percent, and the price indexes for capital goods and automotive vehicles were both unchanged, after each of the major finished goods categories edged down 0.1 percent in May.

Transportation Services: Export air passenger fares increased 2.1 percent in June following a 6.0 percent advance in May. The June increase was driven by a 16.4 percent rise in European fares. Despite the recent increases, export air passenger fares fell 3.6 percent for the year ended in June. Export air freight prices declined 0.9 percent in June and 1.1 percent over the past year.

Import and Export Price Index data for July 2013 are scheduled for release on Tuesday, August 13, 2013 at 8:30 a.m. (EDT).

Table 1. U.S. import price indexes and percent changes for selected categories of goods: June 2012 to June 2013

[2000=100, unless otherwise noted]

Description	End Use	Relative importance May 2013 ¹	Index		Percent change				
			May 2013	June 2013	Annual	Monthly			
					June 2012 to June 2013	Feb. 2013 to Mar. 2013	Mar. 2013 to Apr. 2013	Apr. 2013 to May 2013	May 2013 to June 2013
All commodities		100.000	139.3	139.0	0.2	-0.1	-0.6	-0.7	-0.2
All imports excluding food and fuels (Dec. 2010=100)		73.989	102.8	102.6	-1.1	-0.2	-0.2	-0.4	-0.2
All imports excluding petroleum		80.130	116.1	115.7	-0.5	-0.1	0.0	-0.3	-0.3
All imports excluding fuels (Dec. 2001=100) ..		79.072	120.0	119.6	-1.0	-0.1	-0.2	-0.3	-0.3
Foods, feeds, & beverages	0	5.083	173.9	171.8	0.0	1.6	-0.3	0.4	-1.2
Agricultural foods, feeds & beverages, excluding distilled beverages.....	00	3.904	193.0	190.2	-1.7	1.4	-1.0	0.3	-1.5
Nonagricultural foods (fish, distilled beverages).....	01	1.179	130.5	130.3	6.0	2.6	2.4	0.9	-0.2
Industrial supplies & materials	1	34.286	249.0	248.3	1.1	-0.2	-1.7	-1.7	-0.3
Industrial supplies & materials excluding petroleum.....		14.417	165.2	163.6	-1.0	-0.4	0.0	-1.1	-1.0
Industrial supplies & materials excluding fuels (Dec. 2001=100).....		13.359	184.8	183.0	-4.2	-0.4	-0.7	-1.3	-1.0
Industrial supplies & materials, durable.....		7.867	172.4	170.0	-3.8	-0.1	-1.0	-2.2	-1.4
Industrial supplies & materials nondurable excluding petroleum.....		5.492	156.0	155.3	2.4	-0.7	1.2	0.1	-0.4
Fuels & lubricants.....	10	20.927	331.8	332.2	4.6	0.0	-2.4	-1.9	0.1
Petroleum & petroleum products.....	100	19.869	366.8	367.4	2.9	0.0	-2.9	-2.0	0.2
Crude.....	10000	15.369	384.0	385.6	4.2	-0.3	-3.0	-0.4	0.4
Fuels, n.e.s.-coals & gas.....	101	0.847	140.4	138.9	74.7	0.2	12.6	0.6	-1.1
Gas-natural.....	10110	0.721	128.1	126.6	93.3	-0.2	15.5	1.3	-1.2
Paper & paper base stocks.....	11	0.563	113.3	113.1	-0.9	-0.3	0.0	0.5	-0.2
Materials associated with nondurable supplies & materials.....	12	5.008	174.4	173.7	-5.2	-0.9	-0.3	0.0	-0.4
Selected building materials.....	13	1.052	148.3	143.3	3.8	0.9	1.4	-1.8	-3.4
Unfinished metals related to durable goods.....	14	3.611	248.0	243.8	-7.5	-0.4	-2.1	-3.9	-1.7
Finished metals related to durable goods. ...	15	1.591	159.0	157.7	-2.5	-0.2	-0.6	-0.4	-0.8
Nonmetals related to durable goods.....	16	1.534	113.8	113.8	-1.0	-0.1	-0.2	-0.4	0.0
Capital goods	2	24.092	92.8	92.7	-0.5	-0.1	-0.2	0.0	-0.1
Electric generating equipment.....	20	3.005	119.4	119.2	0.3	-0.1	0.2	-0.3	-0.2
Nonelectrical machinery.....	21	19.218	85.5	85.4	-0.9	-0.1	-0.3	0.0	-0.1
Transportation equipment excluding motor vehicles (Dec. 2001=100).....	22	1.869	136.0	136.0	1.6	0.4	0.1	0.1	0.0
Automotive vehicles, parts & engines	3	12.220	114.2	113.9	-0.4	-0.1	-0.3	-0.3	-0.3
Consumer goods, excluding automotives ..	4	24.318	107.7	107.6	0.0	-0.2	0.3	-0.3	-0.1
Nondurables, manufactured.....	40	11.835	115.9	116.1	1.1	-0.3	0.7	-0.6	0.2
Durables, manufactured.....	41	11.153	99.1	98.9	-0.8	-0.2	0.0	-0.1	-0.2
Nonmanufactured consumer goods.....	42	1.330	116.9	116.4	-2.4	0.6	0.2	0.3	-0.4

¹ Relative importance figures are based on 2011 trade values.

NOTES: Data may be revised in each of the three months after original publication.

Dash = Not available

Table 2. U.S. export price indexes and percent changes for selected categories of goods: June 2012 to June 2013

[2000=100, unless otherwise noted]

Description	End Use	Relative importance May 2013 ¹	Index		Percent change				
			May 2013	June 2013	Annual	Monthly			
					June 2012 to June 2013	Feb. 2013 to Mar. 2013	Mar. 2013 to Apr. 2013	Apr. 2013 to May 2013	May 2013 to June 2013
All commodities.....		100.000	132.8	132.7	0.8	-0.5	-0.7	-0.5	-0.1
Agricultural commodities.....		10.521	222.2	223.6	9.3	-1.8	-2.3	1.1	0.6
All exports excluding food and fuels (Dec. 2010=100).....		81.147	102.4	102.2	-0.3	-0.3	-0.2	-0.5	-0.2
Nonagricultural commodities.....		89.478	126.4	126.1	-0.3	-0.3	-0.5	-0.7	-0.2
Foods, feeds, & beverages.....	0	9.746	221.8	223.1	8.4	-1.9	-2.4	0.8	0.6
Agricultural foods, feeds & beverages, excluding distilled beverages.....	00	9.084	226.2	228.1	9.7	-2.1	-2.6	1.2	0.8
Nonagricultural foods (fish, distilled beverages).....	01	0.662	182.0	177.4	-6.7	0.6	-0.4	-4.4	-2.5
Industrial supplies & materials.....	1	33.903	178.3	177.5	-0.5	-0.7	-1.0	-1.6	-0.4
Industrial supplies & materials, durable.....		11.932	177.2	175.6	-4.3	-1.5	-0.5	-2.6	-0.9
Industrial supplies & materials, nondurable.....		21.971	179.7	179.3	1.7	-0.2	-1.4	-1.0	-0.2
Agricultural industrial supplies & materials..	10	1.437	205.5	204.2	7.9	0.0	-0.1	0.3	-0.6
Nonagricultural industrial supplies & materials.....		32.466	177.5	176.7	-0.8	-0.7	-1.1	-1.7	-0.5
Fuels & lubricants.....	11	9.106	251.4	250.8	1.0	-0.5	-2.8	-2.2	-0.2
Nonagricultural supplies & materials excluding fuels & building materials.....	12	22.331	169.0	168.0	-1.8	-0.9	-0.4	-1.6	-0.6
Selected building materials.....	13	1.029	122.2	122.4	3.6	1.0	1.2	0.1	0.2
Capital goods.....	2	35.436	106.4	106.4	0.6	0.0	-0.2	-0.1	0.0
Electrical generating equipment.....	20	3.505	115.0	114.3	0.0	-0.2	0.0	0.1	-0.6
Nonelectrical machinery.....	21	25.740	95.3	95.4	0.4	-0.1	-0.2	-0.1	0.1
Transportation equipment excluding motor vehicles (Dec. 2001=100).....	22	6.191	151.6	151.6	1.7	0.2	0.0	0.0	0.0
Automotive vehicles, parts & engines.....	3	8.956	113.4	113.4	0.4	0.0	0.0	-0.1	0.0
Consumer goods, excluding automotives..	4	11.958	115.3	115.2	-1.5	-0.2	-0.3	-0.1	-0.1
Nondurables, manufactured.....	40	5.473	114.8	114.7	-0.2	-0.3	-0.5	0.3	-0.1
Durables, manufactured.....	41	5.084	111.6	111.4	-3.0	-0.4	0.0	-0.6	-0.2

1 Relative importance figures are based on 2011 trade values.

NOTES: Data may be revised in each of the three months after original publication.

Dash = Not available

Table 3. U.S. import price indexes and percent changes for selected categories of goods: June 2012 to June 2013

[December 2005=100, unless otherwise noted]

Description	NAICS	Relative importance May 2013 ¹	Index		Percent change				
			May 2013	June 2013	Annual June 2012 to June 2013	Monthly			
						Feb. 2013 to Mar. 2013	Mar. 2013 to Apr. 2013	Apr. 2013 to May 2013	May 2013 to June 2013
Nonmanufactured articles.....		18.588	167.1	167.2	6.2	0.3	-2.2	-0.2	0.1
Agriculture, forestry, fishing and hunting...	11	1.866	176.2	173.1	0.8	4.2	-1.8	1.4	-1.8
Crop production.....	111	1.309	181.2	177.3	-0.6	5.1	-3.0	2.1	-2.2
Forestry and logging (Dec. 2012=100).....	113	0.205	105.4	105.3	-	-1.3	-1.7	2.0	-0.1
Mining.....	21	16.722	165.8	166.2	6.8	-0.2	-2.2	-0.4	0.2
Mining (except oil and gas) (Dec. 2006=100).....	212	0.324	134.0	134.0	-6.9	-0.5	-0.4	0.4	0.0
Manufactured articles.....		80.951	116.4	116.0	-1.2	-0.1	-0.3	-0.7	-0.3
Manufactured goods, part 1.....	31	10.540	123.7	123.5	-1.7	-0.2	0.0	0.2	-0.2
Food manufacturing.....	311	2.882	155.2	153.9	-5.5	-0.8	0.4	0.6	-0.8
Beverage and tobacco product manufacturing.....	312	0.877	113.5	113.3	1.3	0.0	-0.2	0.2	-0.2
Textile mills (Dec. 2011=100).....	313	0.390	101.6	101.2	-0.3	-0.1	-0.1	-0.2	-0.4
Textile product mills.....	314	0.790	115.5	115.5	-0.4	-0.3	0.1	0.1	0.0
Apparel manufacturing.....	315	3.938	110.3	110.5	-1.3	0.0	-0.2	-0.1	0.2
Leather and allied product manufacturing. . .	316	1.663	121.5	121.8	1.9	0.2	0.2	-0.1	0.2
Manufactured goods, part 2.....	32	17.730	135.9	135.4	-0.8	-0.1	-0.4	-2.3	-0.4
Wood product manufacturing.....	321	0.637	129.3	122.9	5.7	1.1	2.4	-2.9	-4.9
Paper manufacturing.....	322	1.036	110.5	110.4	-0.7	-0.3	0.0	0.4	-0.1
Petroleum and coal products manufacturing.....	324	3.970	152.6	151.9	-3.4	0.5	-2.7	-7.4	-0.5
Chemical manufacturing.....	325	9.226	135.7	135.5	0.0	-0.3	0.4	-0.9	-0.1
Plastics and rubber products manufacturing.....	326	1.943	126.0	125.6	-1.6	-0.1	-0.6	-0.2	-0.3
Nonmetallic mineral product manufacturing.....	327	0.835	129.0	129.0	-0.7	-0.1	0.1	0.0	0.0
Manufactured goods, part 3.....	33	52.682	108.8	108.5	-1.2	-0.1	-0.4	-0.4	-0.3
Primary metal manufacturing.....	331	4.225	163.1	160.3	-7.8	-0.5	-2.2	-3.4	-1.7
Fabricated metal product manufacturing. . .	332	2.664	128.3	127.7	-1.3	-0.4	-0.2	-0.7	-0.5
Machinery manufacturing.....	333	6.633	121.6	121.5	0.3	-0.4	-0.4	0.4	-0.1
Computer and electronic product manufacturing.....	334	16.062	81.1	81.0	-1.5	-0.2	-0.1	0.0	-0.1
Electrical equipment, appliance, and component manufacturing.....	335	4.021	119.4	119.4	0.9	0.1	-0.2	-0.2	0.0
Transportation equipment manufacturing. . .	336	12.975	112.1	111.8	0.3	0.0	-0.3	-0.2	-0.3
Furniture and related product manufacturing.....	337	1.257	114.4	114.0	-0.1	0.4	0.1	0.0	-0.3
Miscellaneous manufacturing.....	339	4.844	120.8	120.7	-1.4	0.2	0.1	-0.2	-0.1

¹ Relative importance figures are based on 2011 trade values.

NOTES: Data may be revised in each of the three months after original publication.

Dash = Not available

Table 4. U.S. export price indexes and percent changes for selected categories of goods: June 2012 to June 2013

[December 2005=100, unless otherwise noted]

Description	NAICS	Relative importance May 2013 ¹	Index		Percent change				
			May 2013	June 2013	Annual	Monthly			
					June 2012 to June 2013	Feb. 2013 to Mar. 2013	Mar. 2013 to Apr. 2013	Apr. 2013 to May 2013	May 2013 to June 2013
Nonmanufactured articles.....		7.917	171.5	171.6	8.4	-1.5	-3.0	1.6	0.1
Agriculture, forestry, fishing and hunting...	11	5.778	210.5	212.1	11.4	-2.0	-4.0	1.8	0.8
Crop production.....	111	5.341	219.1	222.0	12.7	-2.1	-4.8	2.7	1.3
Mining.....	21	2.139	94.1	92.4	-1.7	-0.3	-0.1	0.7	-1.8
Mining (except oil and gas).....	212	1.424	105.7	105.0	-12.1	-0.9	-0.7	-0.6	-0.7
Manufactured articles.....		89.687	120.4	120.3	0.2	-0.2	-0.5	-0.6	-0.1
Manufactured goods, part 1.....	31	7.020	151.0	151.5	3.2	-0.3	-0.3	-0.4	0.3
Food manufacturing.....	311	4.926	172.9	173.5	3.3	-0.5	-0.5	-0.6	0.3
Beverage and tobacco product manufacturing.....	312	0.571	127.1	128.7	7.3	-0.3	-0.7	-0.2	1.3
Manufactured goods, part 2.....	32	26.363	132.5	132.5	0.8	-0.2	-1.2	-0.7	0.0
Wood product manufacturing.....	321	0.421	117.5	117.9	3.4	1.5	1.0	0.3	0.3
Paper manufacturing.....	322	1.827	121.8	122.3	2.9	0.5	0.2	0.6	0.4
Petroleum and coal products manufacturing.....	324	6.763	159.1	159.4	0.7	-0.3	-4.1	-2.9	0.2
Chemical manufacturing.....	325	14.316	131.3	131.1	0.4	-0.2	-0.3	-0.2	-0.2
Plastics and rubber products manufacturing.....	326	2.250	121.0	121.2	2.9	-0.2	0.8	0.4	0.2
Nonmetallic mineral product manufacturing.....	327	0.786	111.1	111.1	-0.9	0.4	0.3	-0.1	0.0
Manufactured goods, part 3.....	33	56.304	112.7	112.5	-0.6	-0.2	-0.2	-0.5	-0.2
Primary metal manufacturing.....	331	4.905	158.9	155.1	-8.1	-1.4	-1.0	-4.1	-2.4
Fabricated metal product manufacturing. ...	332	2.763	131.5	131.4	0.5	-0.2	0.2	-0.5	-0.1
Machinery manufacturing.....	333	11.661	122.0	122.0	1.3	-0.1	0.0	0.0	0.0
Computer and electronic product manufacturing.....	334	14.192	88.6	88.7	-1.2	-0.1	-0.4	-0.2	0.1
Electrical equipment, appliance, and component manufacturing.....	335	3.326	114.2	113.7	0.8	-0.1	0.3	0.2	-0.4
Transportation equipment manufacturing....	336	14.183	117.9	117.9	0.9	0.1	0.1	-0.1	0.0
Furniture and related product manufacturing (Dec. 2011=100).....	337	0.315	105.4	105.6	2.5	0.1	0.3	-0.4	0.2
Miscellaneous manufacturing.....	339	4.960	121.8	122.0	-0.7	-0.5	0.0	-0.4	0.2

1 Relative importance figures are based on 2011 trade values.

NOTES: Data may be revised in each of the three months after original publication.

Dash = Not available

Table 5. U.S. import price indexes and percent changes for selected categories of goods: June 2012 to June 2013

[2000=100, unless otherwise noted]

Description	Harmonized system	Relative importance May 2013 ¹	Index		Percent change				
			May 2013	June 2013	Annual	Monthly			
					June 2012 to June 2013	Feb. 2013 to Mar. 2013	Mar. 2013 to Apr. 2013	Apr. 2013 to May 2013	May 2013 to June 2013
Live animals; animal products.....	I	1.136	176.2	177.8	7.9	2.8	1.8	0.4	0.9
Meat and edible meat offal.....	02	0.253	219.1	218.4	2.0	-1.9	1.0	-0.1	-0.3
Fish and crustaceans, molluscs and other aquatic invertebrates.....	03	0.633	130.8	133.0	12.1	5.6	3.0	1.5	1.7
Vegetable products.....	II	1.663	213.1	204.1	-7.6	2.5	-2.1	1.4	-4.2
Edible vegetables, roots, and tubers.....	07	0.364	353.3	347.5	7.9	13.4	-12.5	6.8	-1.6
Edible fruit and nuts; peel of citrus fruit or melons.....	08	0.456	122.6	110.2	-6.4	2.2	5.6	-2.2	-10.1
Coffee, tea, mate and spices.....	09	0.372	240.2	235.8	-11.7	1.1	-4.2	0.0	-1.8
Animal or vegetable fats and oils (Dec. 2009=100).....	III	0.250	116.7	116.4	-10.9	-1.6	-1.2	-1.0	-0.3
Prepared foodstuffs, beverages, and tobacco.....	IV	2.411	157.7	156.6	-0.5	0.1	-0.3	0.4	-0.7
Sugars and sugar confectionary (Dec. 2012=100).....	17	0.202	95.6	93.6	-	0.2	-3.4	-1.8	-2.1
Cocoa and cocoa preparations (Dec. 2009=100).....	18	0.197	87.4	90.1	6.5	-1.3	-0.8	2.1	3.1
Preparations of cereals, flour, starch or milk; bakers' wares (Dec. 2007=100).....	19	0.242	132.1	132.1	4.7	0.5	0.2	0.0	0.0
Preparations of vegetables, fruit, nuts, or other parts of plants.....	20	0.316	164.8	165.0	-3.5	-0.4	0.0	2.3	0.1
Beverages, spirits, and vinegar.....	22	0.868	124.6	124.2	1.6	0.1	-0.3	0.4	-0.3
Mineral products.....	V	20.871	334.3	334.9	4.6	-0.1	-2.4	-1.8	0.2
Mineral fuels, oils and residuals, bituminous substances and mineral waxes.....	27	20.583	330.9	331.5	4.8	-0.1	-2.4	-1.8	0.2
Products of the chemical or allied industries.....	VI	8.654	150.6	150.3	-0.3	-0.5	0.4	-0.9	-0.2
Inorganic chemicals.....	28	0.796	352.3	348.0	-9.3	-2.7	-2.1	-1.6	-1.2
Organic chemicals.....	29	2.619	135.6	135.3	-2.0	-1.9	-0.9	-0.9	-0.2
Pharmaceutical products.....	30	3.407	125.0	125.0	6.5	0.7	2.4	-1.1	0.0
Fertilizers (Dec. 2009=100).....	31	0.399	125.9	126.3	-18.9	1.7	-1.0	-2.1	0.3
Tanning extracts; dye, pigments, varnish, paints & putty (Dec. 2011=100).....	32	0.164	93.9	93.8	-11.0	-0.1	-0.1	0.1	-0.1
Miscellaneous chemical products.....	38	0.486	102.4	101.7	-0.7	0.2	-0.7	0.3	-0.7
Plastics and articles thereof; rubber and articles thereof.....	VII	3.222	152.5	152.3	-0.3	-0.5	-0.3	-0.3	-0.1
Plastics and articles thereof.....	39	1.968	147.9	148.1	2.9	-0.5	0.3	-0.5	0.1
Rubber and articles thereof.....	40	1.254	162.0	161.2	-5.0	-0.3	-1.1	0.0	-0.5
Raw hides, skins, leather, furskins, travel goods, etc.....	VIII	0.598	125.8	125.3	-0.9	-0.1	0.1	-0.6	-0.4
Articles of leather; travel goods, bags, etc. of various materials.....	42	0.555	127.4	126.8	-0.3	0.2	0.1	-0.1	-0.5
Wood, wood charcoal, cork, straw, basketware and wickerwork.....	IX	0.680	158.4	150.3	6.8	1.2	2.8	-2.6	-5.1
Woodpulp, recovered paper, and paper products.....	X	1.133	113.5	113.6	-0.4	-0.2	0.1	0.2	0.1
Pulp wood, waste paper, and paperboard (Dec. 2011=100).....	47	0.182	104.7	104.4	0.4	0.5	0.7	2.3	-0.3
Paper and paperboard; articles of paper pulp, paper or paperboard.....	48	0.750	106.9	107.0	-1.1	-0.4	-0.1	-0.2	0.1
Textile and textile articles.....	XI	4.964	113.9	114.2	-1.0	0.0	-0.2	-0.1	0.3
Articles of apparel and clothing accessories, knitted or crocheted.....	61	1.945	103.4	103.6	-2.3	-0.3	-0.1	-0.5	0.2

See footnotes at end of table.

Table 5. U.S. import price indexes and percent changes for selected categories of goods: June 2012 to June 2013 — Continued

[2000=100, unless otherwise noted]

Description	Harmonized system	Relative importance May 2013 ¹	Index		Percent change				
			May 2013	June 2013	Annual	Monthly			
					June 2012 to June 2013	Feb. 2013 to Mar. 2013	Mar. 2013 to Apr. 2013	Apr. 2013 to May 2013	May 2013 to June 2013
Articles of apparel and clothing accessories, not knitted or crocheted.....	62	1.828	117.3	117.9	-0.2	0.3	-0.1	0.2	0.5
Made-up or worn textile articles.....	63	0.551	108.3	108.5	-0.2	-0.5	0.4	0.1	0.2
Headgear, umbrellas, artificial flowers, etc. . .	XII	1.364	120.9	121.2	2.1	0.2	0.2	-0.2	0.2
Footwear and parts of such articles.....	64	1.169	120.1	120.4	2.3	0.2	0.2	-0.3	0.2
Stone, plaster, cement, asbestos, ceramics, glass etc.....	XIII	0.768	131.9	131.8	-0.2	0.1	-0.2	0.0	-0.1
Articles of stone, plaster, cement, asbestos, or mica (Dec. 2001=100).....	68	0.248	125.5	125.6	0.2	0.4	-0.2	0.2	0.1
Ceramic products.....	69	0.241	140.3	140.1	-1.4	-0.1	0.1	-0.1	-0.1
Glass and glassware.....	70	0.280	127.9	127.8	0.6	0.0	-0.3	-0.1	-0.1
Pearls, stones, precious metals, imitation jewelry, and coins.....	XIV	3.157	190.8	186.0	-6.6	-0.8	-1.3	-3.9	-2.5
Base metals and articles of base metals.....	XV	4.985	181.6	181.2	-4.0	0.1	-1.2	-1.0	-0.2
Iron and steel.....	72	1.143	216.7	215.3	-10.9	0.5	-0.5	-1.1	-0.6
Articles of iron or steel.....	73	1.502	156.6	156.0	-3.0	-0.1	-0.5	-0.1	-0.4
Copper and articles thereof.....	74	0.460	332.2	335.8	-3.9	-1.4	-4.0	-2.9	1.1
Nickel and articles thereof (Dec. 2009=100)...	75	0.141	95.7	91.4	-9.4	1.9	-4.2	-4.4	-4.5
Aluminum and articles thereof.....	76	0.671	136.5	137.6	-0.1	0.4	-1.8	-1.4	0.8
Tools, implements, cutlery, spoons and forks, of base metal; parts thereof.....	82	0.386	129.2	129.4	0.9	0.0	-0.3	0.0	0.2
Miscellaneous articles of base metal.....	83	0.433	135.9	135.8	0.2	-0.2	-0.1	-0.1	-0.1
Machinery, electrical equipment, TV image and sound recorders, parts, etc.....	XVI	26.512	85.2	85.1	-0.7	-0.2	-0.2	0.0	-0.1
Machinery and mechanical appliances; parts thereof.....	84	13.729	89.8	89.8	0.0	-0.2	-0.2	0.1	0.0
Electrical machinery and equip, sound and TV recorders & reproducers, parts.....	85	12.783	80.7	80.6	-1.5	-0.4	-0.1	-0.2	-0.1
Vehicles, aircraft, vessels and associated transport equipment.....	XVII	10.749	116.4	116.1	0.3	0.0	-0.3	0.0	-0.3
Motor vehicles and their parts.....	87	9.809	115.2	114.9	0.1	-0.1	-0.3	0.0	-0.3
Aircraft, spacecraft, and parts thereof (Dec. 2002=100).....	88	0.871	120.0	120.0	1.5	0.6	0.0	-0.1	0.0
Optical, photo, measuring, medical & musical instruments; & timepieces.....	XVIII	3.349	103.8	103.8	-0.5	0.0	0.2	-0.1	0.0
Optical, photographic, measuring and medical instruments.....	90	3.038	100.7	100.7	-1.1	0.1	0.3	-0.1	0.0
Clocks and watches and parts thereof.....	91	0.252	140.8	140.1	8.3	0.0	-1.0	0.0	-0.5
Miscellaneous manufactured articles.....	XX	3.473	113.1	112.8	0.0	0.2	0.0	0.0	-0.3
Furniture & stuffed furnishings; lamps & lighting fittings, nesoi; prefab bldgs.....	94	1.942	117.2	116.6	0.1	0.4	0.0	0.1	-0.5
Toys, games and sports equipment; parts and accessories thereof.....	95	1.336	105.1	105.2	-0.2	0.0	0.0	-0.1	0.1
Miscellaneous manufactured articles.....	96	0.195	138.3	138.3	1.1	0.4	0.0	-0.1	0.0

¹ Relative importance figures are based on 2011 trade values.

NOTES: Data may be revised in each of the three months after original publication.

Dash = Not available

Table 6. U.S. export price indexes and percent changes for selected categories of goods: June 2012 to June 2013

[2000=100, unless otherwise noted]

Description	Harmonized system	Relative importance May 2013 ¹	Index		Percent change				
			May 2013	June 2013	Annual	Monthly			
					June 2012 to June 2013	Feb. 2013 to Mar. 2013	Mar. 2013 to Apr. 2013	Apr. 2013 to May 2013	May 2013 to June 2013
Live animals; animal products.....	I	2.035	214.1	211.5	4.3	-1.8	0.7	-2.5	-1.2
Meat & edible meat offal (Dec. 2006=100). . .	02	1.174	166.5	168.0	1.4	0.1	-0.2	-1.4	0.9
Fish and crustaceans, molluscs and other aquatic invertebrates.....	03	0.378	188.9	182.4	-12.3	0.6	-0.3	-6.8	-3.4
Vegetable products.....	II	5.333	267.4	271.5	12.5	-1.8	-4.7	2.6	1.5
Edible fruit and nuts; peel of citrus fruit or melons.....	08	0.995	155.2	154.3	10.7	-4.7	-4.9	4.9	-0.6
Cereals.....	10	2.085	305.5	307.0	16.2	-2.8	-5.1	2.7	0.5
Oilseeds and misc. grains, seeds, fruits, plants, straw and fodder.....	12	1.691	287.0	299.5	11.9	-0.1	-5.4	2.4	4.4
Animal or vegetable fats and oils (Dec. 2009=100).....	III	0.313	136.6	132.3	-10.7	-0.7	1.7	-0.7	-3.1
Prepared foodstuffs, beverages, and tobacco.....	IV	2.996	166.1	167.6	6.2	-0.7	-0.1	-0.5	0.9
Preparations of vegetables, fruit, nuts or other parts of plants (Dec. 2009=100).....	20	0.334	113.2	113.1	2.0	0.5	0.6	-0.1	-0.1
Beverages, spirits, and vinegar (Dec. 2008=100).....	22	0.610	113.3	113.2	3.0	-0.5	-0.1	0.0	-0.1
Residues and waste from the food industries; prepared animal feed.....	23	0.724	259.1	269.7	12.9	-2.2	0.4	-3.1	4.1
Mineral products.....	V	8.995	292.7	292.4	-0.9	-0.3	-3.2	-2.1	-0.1
Ores, slag and ash (Dec. 2012=100).....	26	0.448	91.7	91.7	-	-2.2	-2.4	-3.9	0.0
Mineral fuels, oils and residuals, bituminous substances and mineral waxes.....	27	8.364	289.7	289.4	-0.4	-0.1	-3.4	-2.1	-0.1
Products of the chemical or allied industries.....	VI	11.555	154.6	154.2	0.1	-0.4	-0.2	0.3	-0.3
Inorganic chemicals.....	28	1.051	189.3	186.0	1.5	0.2	0.8	1.6	-1.7
Organic chemicals.....	29	3.241	165.0	164.6	-0.2	-0.4	-0.8	-1.0	-0.2
Pharmaceutical products.....	30	2.682	122.7	122.5	-1.3	-0.8	-0.9	0.2	-0.2
Fertilizers (Dec. 2012=100).....	31	0.381	96.3	96.8	-	1.7	1.1	-1.9	0.5
Essential oils and resinoids; perfumery cosmetic or toilet preparations.....	33	0.725	138.5	138.5	1.8	1.2	-0.1	-0.1	0.0
Soap; lubricants; waxes, polishing or scouring products; candles, pastes.....	34	0.448	119.4	119.5	-3.0	-1.6	0.3	-0.3	0.1
Miscellaneous chemical products.....	38	1.783	156.0	156.0	2.0	-1.4	-0.1	2.2	0.0
Plastics and articles thereof; rubber and articles thereof.....	VII	5.300	149.9	150.2	1.4	0.1	0.1	-0.3	0.2
Plastics and articles thereof.....	39	4.264	142.6	142.9	3.1	0.4	0.1	-0.3	0.2
Rubber and articles thereof.....	40	1.036	183.3	183.3	-5.4	-1.2	-0.1	-0.1	0.0
Raw hides, skins, leather, furskins, travel goods, etc.....	VIII	0.407	146.6	146.5	12.6	1.0	1.1	0.4	-0.1
Wood, wood charcoal, cork, straw, basketware and wickerwork.....	IX	0.586	113.5	113.4	2.8	1.4	1.2	-0.1	-0.1
Woodpulp, recovered paper, and paper products.....	X	2.252	120.8	121.1	2.8	0.7	0.0	0.1	0.2
Woodpulp and recovered paper.....	47	0.604	125.1	126.0	-0.1	2.2	-0.5	-0.4	0.7
Paper and paperboard; articles of paper pulp, paper or paperboard.....	48	1.198	119.0	119.0	2.1	-0.3	0.1	0.3	0.0
Printed material.....	49	0.450	130.7	130.7	8.6	1.2	0.7	0.0	0.0
Textile and textile articles.....	XI	1.838	131.0	130.0	4.1	-0.1	0.2	0.7	-0.8
Cotton, including yarns and woven fabrics thereof.....	52	0.511	145.5	142.4	7.9	-0.5	-0.3	0.6	-2.1
Stone, plaster, cement, asbestos, ceramics, glass etc.....	XIII	0.761	118.2	118.2	0.4	0.1	0.2	0.0	0.0

See footnotes at end of table.

Table 6. U.S. export price indexes and percent changes for selected categories of goods: June 2012 to June 2013 — Continued

[2000=100, unless otherwise noted]

Description	Harmonized system	Relative importance May 2013 ¹	Index		Percent change				
			May 2013	June 2013	Annual	Monthly			
					June 2012 to June 2013	Feb. 2013 to Mar. 2013	Mar. 2013 to Apr. 2013	Apr. 2013 to May 2013	May 2013 to June 2013
Glass and glassware.....	70	0.390	97.5	97.5	-1.0	0.2	0.1	0.0	0.0
Pearls, stones, precious metals, imitation jewelry, and coins.....	XIV	4.946	261.4	254.8	-8.2	-1.9	-1.2	-4.5	-2.5
Base metals and articles of base metals.....	XV	5.291	165.5	165.6	-4.2	-1.8	-0.6	-1.8	0.1
Iron and steel.....	72	1.467	186.5	185.9	-11.2	-3.9	-1.3	-3.1	-0.3
Articles of iron or steel.....	73	1.328	169.9	169.2	-1.9	0.1	0.5	-0.4	-0.4
Copper and articles thereof.....	74	0.584	230.8	236.9	-2.3	-3.6	-2.2	-5.9	2.6
Aluminum and articles thereof.....	76	0.842	123.0	122.8	-1.7	-1.5	-0.7	-0.8	-0.2
Tools, implements, cutlery, spoons and forks, of base metal; parts thereof.....	82	0.404	132.4	132.4	2.5	-0.1	0.5	0.0	0.0
Miscellaneous articles of base metal.....	83	0.326	147.1	147.3	1.0	-0.3	0.0	0.5	0.1
Machinery, electrical equipment, TV image and sound recorders, parts, etc.....	XVI	27.973	97.1	97.1	-0.1	-0.1	-0.2	-0.2	0.0
Machinery and mechanical appliances; parts thereof.....	84	16.741	111.3	111.3	0.6	-0.1	0.0	-0.1	0.0
Electrical machinery and equipment and parts and accessories thereof.....	85	11.232	81.8	81.8	-1.1	-0.1	-0.6	-0.1	0.0
Vehicles, aircraft, vessels and associated transport equipment.....	XVII	12.023	128.0	128.0	1.0	0.1	0.2	-0.1	0.0
Motor vehicles and their parts.....	87	8.149	113.8	113.7	0.6	0.0	0.2	-0.1	-0.1
Optical, photo, measuring, medical & musical instruments; & timepieces.....	XVIII	5.899	106.9	107.1	1.0	-0.1	-0.1	-0.3	0.2
Miscellaneous manufactured articles.....	XX	1.344	110.7	110.3	-0.1	0.1	0.0	-0.2	-0.4
Furniture; stuffed furnishings; lamps and lighting fittings nesoi;.....	94	0.724	121.1	121.3	1.2	0.1	0.1	-0.1	0.2
Toys, games and sports equipment; parts and accessories thereof.....	95	0.512	90.6	89.6	-1.8	0.1	-0.1	-0.3	-1.1

¹ Relative importance figures are based on 2011 trade values.

NOTES: Data may be revised in each of the three months after original publication.

Dash = Not available

Table 7. U.S. import price indexes and percent changes by locality of origin: June 2012 to June 2013
 [2000=100, unless otherwise noted]

Description	Relative importance May 2013 ¹	Index		Percent change				
		May 2013	June 2013	Annual	Monthly			
				June 2012 to June 2013	Feb. 2013 to Mar. 2013	Mar. 2013 to Apr. 2013	Apr. 2013 to May 2013	May 2013 to June 2013
Industrialized Countries²	100.000	132.5	132.0	1.4	0.1	-0.2	0.2	-0.4
Nonmanufactured articles.....	12.414	244.8	244.6	20.7	1.6	2.4	7.4	-0.1
Manufactured articles.....	87.002	123.5	123.0	-1.0	0.0	-0.6	-0.7	-0.4
Other Countries³	100.000	138.1	138.0	-0.5	-0.1	-1.2	-0.8	-0.1
Nonmanufactured articles.....	22.195	341.1	341.5	1.3	-0.3	-4.1	-2.5	0.1
Manufactured articles.....	77.461	110.1	109.9	-1.2	-0.1	-0.4	-0.3	-0.2
Canada	100.000	154.4	154.1	4.5	0.7	0.3	1.4	-0.2
Nonmanufactured articles.....	30.788	234.3	234.1	21.9	1.7	2.7	7.4	-0.1
Manufactured articles.....	68.218	137.4	137.1	-1.6	0.4	-0.7	-1.0	-0.2
European Union⁴	100.000	135.4	135.2	0.1	-0.7	-0.1	-0.2	-0.1
Nonmanufactured articles.....	1.049	363.8	364.4	7.0	-2.0	-3.3	-0.3	0.2
Manufactured articles.....	98.437	131.7	131.5	-0.1	-0.7	-0.2	-0.2	-0.2
France (Dec. 2003=100)	100.000	121.8	121.7	0.7	0.9	-0.3	0.1	-0.1
Germany (Dec. 2003=100)	100.000	115.8	115.7	1.1	-0.3	-0.1	0.0	-0.1
United Kingdom (Dec. 2003=100)	100.000	128.1	128.2	-3.0	-3.3	-0.7	0.0	0.1
Latin America⁵	100.000	173.8	173.6	0.2	-0.7	-2.0	-0.9	-0.1
Nonmanufactured articles.....	31.967	369.5	369.2	4.3	-1.4	-3.7	-1.8	-0.1
Manufactured articles.....	67.638	131.4	131.2	-1.8	-0.3	-1.1	-0.4	-0.2
Mexico (Dec. 2003=100)	100.000	144.5	143.8	0.4	-0.1	-1.2	0.0	-0.5
Nonmanufactured articles (Dec. 2008=100).....	19.235	204.2	200.9	6.6	0.1	-4.3	-0.4	-1.6
Manufactured articles (Dec. 2008=100) ...	80.437	94.1	93.9	-1.1	-0.1	-0.3	0.0	-0.2
Pacific Rim (Dec. 2003=100)⁶	100.000	103.7	103.6	-0.9	-0.1	-0.1	-0.1	-0.1
China (Dec. 2003=100)	100.000	103.9	103.8	-1.0	-0.2	-0.1	-0.1	-0.1
Japan	100.000	101.0	100.5	-2.0	-0.2	-0.7	-0.4	-0.5
Asian NICs⁷	100.000	91.2	91.3	0.6	0.1	1.1	0.2	0.1
ASEAN (Dec. 2003=100)⁸	100.000	104.7	104.6	-0.4	-0.4	0.6	0.2	-0.1
Asia Near East (Dec. 2003=100)⁹	100.000	266.2	266.8	-1.3	0.7	-2.6	-1.8	0.2

1 Relative figures are based on 2011 trade values.

2 Western Europe, Canada, Japan, Australia, New Zealand and South Africa.

3 Eastern Europe, Latin America, OPEC countries, and other countries in Asia, Africa and the Western Hemisphere.

4 European Union countries.

5 Mexico, Central America, South America and the Caribbean.

6 China, Japan, Australia, Brunei, Indonesia, Macao, Malaysia, New Zealand, Papua New Guinea, Philippines and the Asian Newly Industrialized Countries.

7 Asian Newly Industrialized Countries - Hong Kong, Singapore, South Korea and Taiwan.

8 Association of Southeast Asian Nations - Brunei, Cambodia, Indonesia, Laos, Malaysia, Myanmar, Philippines, Singapore, Thailand and Vietnam.

9 Bahrain, Iran, Iraq, Israel, Jordan, Kuwait, Lebanon, Oman, Qatar, Saudi Arabia, Syria, United Arab Emirates and Yemen.

NOTES: Data may be revised in each of the three months after original publication.

Regions are not mutually exclusive.

Dash = Not available

Table 8. U.S. international price indexes and percent changes for selected transportation services: June 2012 to June 2013

[2000=100, unless otherwise noted]

Description	Relative importance May 2013 ¹	Index		Percent change				
		May 2013	June 2013	Annual	Monthly			
				June 2012 to June 2013	Feb. 2013 to Mar. 2013	Mar. 2013 to Apr. 2013	Apr. 2013 to May 2013	May 2013 to June 2013
Air Freight								
Import Air Freight	100.000	172.3	171.8	-3.8	-0.5	-1.1	-0.2	-0.3
Europe (Dec. 2003=100).....	21.927	164.0	163.6	1.0	1.3	-3.9	0.6	-0.2
Asia.....	73.688	151.9	151.5	-5.5	-1.0	-0.4	-0.5	-0.3
Export Air Freight	100.000	147.6	146.3	-1.1	0.1	0.3	-1.2	-0.9
Europe (Dec. 2006=100).....	35.911	132.8	131.9	-1.2	0.3	0.5	-1.0	-0.7
Inbound Air Freight	100.000	161.9	160.6	-1.6	-0.4	-0.5	-0.6	-0.8
Europe (Dec. 2003=100).....	21.998	148.4	147.8	0.8	0.0	-2.5	0.1	-0.4
Asia.....	67.343	146.9	145.5	-2.5	-0.6	-0.1	-0.9	-1.0
Outbound Air Freight	100.000	147.2	145.4	-2.4	0.4	0.1	-0.9	-1.2
Europe (Dec. 2003=100).....	27.782	160.6	160.5	-2.7	-0.3	-0.1	-0.2	-0.1
Asia.....	52.504	140.9	138.4	-2.9	1.1	0.1	-1.4	-1.8
Air Passenger Fares								
Import Air Passenger Fares	100.000	185.8	205.6	2.9	-1.6	0.3	2.0	10.7
Europe.....	43.085	208.3	238.8	7.4	-4.4	1.4	-0.4	14.6
Asia.....	26.082	155.2	172.9	2.1	-0.3	1.9	3.2	11.4
Latin America/Caribbean.....	9.196	165.0	173.2	-0.4	2.6	0.0	-1.7	5.0
Export Air Passenger Fares	100.000	191.4	195.5	-3.6	0.7	-2.6	6.0	2.1
Europe.....	27.649	222.4	258.8	1.9	1.5	-4.1	4.5	16.4
Asia.....	28.494	165.0	164.6	-8.0	-1.4	-5.7	9.1	-0.2
Latin America/Caribbean.....	21.057	191.8	190.7	-14.9	2.3	-3.3	-0.2	-0.6

¹ Relative importance figures are based on 2011 trade values.

NOTES: Data may be revised in each of the three months after original publication.

Dash = Not available

TECHNICAL NOTE

Import and Export Merchandise and Services Price Indexes -- All indexes use a modified Laspeyres formula and are not seasonally adjusted. Price indexes are reweighted annually, with a two-year lag in the weights. Published series use a base year of 2000=100 where possible. More detailed index series and additional information may be obtained at <http://www.bls.gov/mxp>, or by calling (202) 691-7101.

Merchandise Goods Classification Systems -- The merchandise price indexes are published using three classification systems. Items are classified by end use according to the Bureau of Economic Analysis Classification System, by industry according to the North American Industry Classification System (NAICS), and by product category according to the Harmonized System (HS). While classification by end use and product category are self-explanatory, some notes are in order for classifying items by industry. In the NAICS imports and exports tables, items are classified by output industry, not input industry. As an example, NAICS import index 326 (plastics and rubber products manufacturing) include outputs such as manufactured plastic rather than inputs such as petroleum. The NAICS classification structure also matches the classification system used by the PPI (Producer Price Index) to produce the NAICS primary products indexes.

Import Price Indexes -- Products have been classified by the Harmonized Tariff Schedule of the United States Annotated (TSUSA). Import prices are based on U.S. dollar prices paid by the U.S. importer. The prices are generally either "free on board" (f.o.b.) foreign port or "cost, insurance, and freight" (c.i.f.) U.S. port transaction prices, depending on the practices of the individual industry. The index for crude petroleum is calculated from data collected by the U.S. Department of Energy.

Export Price Indexes -- Products have been classified by the Harmonized Schedule B classification system of the U.S. Bureau of the Census. The prices used are generally either "free alongside ship" (f.a.s.) factory or "free on board" (f.o.b.) transaction prices, depending on the practices of the individual industry. Prices used in the grain index, excluding rice, are obtained from the U.S. Department of Agriculture.

Services Price Indexes -- Starting in September 2008 the Import Air Passenger Fares Indexes represent changes in the average revenue per passenger received by foreign carriers from U.S. residents and are calculated from data obtained from an airline consulting service. These data include tickets sold by travel agencies and travel websites. Tickets sold directly by the airlines are excluded, as are frequent flyer tickets generally. Starting in January 2008 the Export Air Passenger Fares Indexes represent changes in the average revenue per passenger received by U.S. carriers from foreign residents and are calculated from data collected directly from airlines. These data include frequent flyer tickets and those sold by consolidators. Taxes and fees are included in the Import Air Passenger Fares Index and excluded from the Export Air Passenger Fares Index. The Air Freight Indexes are calculated from data collected directly from airlines. These data exclude mail and passenger baggage. The scope of the service being priced is the movement of freight from airport to airport only, and does not include any ground transportation or port service. The Air Freight Indexes are presented using two definitions: Balance of Payments (which represent transactions between U.S. and foreign residents) and International (which represent transactions inbound to and outbound from the U.S.). Fact sheets specifying detailed information for each services industry are available at <http://www.bls.gov/mxp> under "MXP Publications."

Import Indexes by Locality of Origin -- Prices used in these indexes are a subset of the data collected for the Import Price Indexes. Beginning with January 2002, the indexes are defined by locality of origin using a nomenclature based upon the North American Industry Classification System (NAICS). Nonmanufactured goods are defined as NAICS 11 and 21 and manufactured goods are defined as NAICS 31-33.

Revision Policy -- To reflect the availability of late reports and corrections by respondents, monthly data may be revised in each of the three months after original publication. After three months, no further data revisions take place. So, for example, data released in the January release will be subject to revision in the releases for February, March, and April.

Uses of the Data -- The primary use of the indexes is to deflate trade statistics, notably the foreign trade sector of the National Income and Product Accounts constructed by the Department of Commerce. Other published indexes are useful for general market analysis. For trade in international services, Balance of Payments indexes are used for deflating National Income and Product Accounts, while International indexes are more appropriate for market analysis. Merchandise and services indexes also can be used to study U.S. competitiveness and to compute price elasticities, and the merchandise import indexes by country or region of origin are useful in terms of trade analysis.

E-Mail Subscription -- The U.S. Import and Export Price Indexes news release is available through an e-mail subscription service at (<http://www.bls.gov/bls/list.htm>).

Additional Information -- More detailed data are available on the Import/Export Price Indexes home page at (<http://www.bls.gov/mxp>). Flat Files and the FTP server are available for users requiring access to either a large volume of time series data or other related documentation. The FTP site can be accessed at <ftp://ftp.bls.gov>. For technical assistance in using the BLS Internet site, send e-mail to (labstat.helpdesk@bls.gov). For Import/Export Price Index data requests, send e-mail to (mxpinfo@bls.gov).

Information from this release will be made available to sensory impaired individuals upon request. Voice phone: 202-691-5200; Federal Relay Service: 1-800-877-8339.