

Transmission of material in this release is embargoed until
8:30 a.m. (EST) Friday, November 9, 2012

USDL-12-2205

Technical information: (202) 691-7101 • MXPinfo@bls.gov • www.bls.gov/mxp
Media contact: (202) 691-5902 • PressOffice@bls.gov

U.S. IMPORT AND EXPORT PRICE INDEXES – OCTOBER 2012

The price index for U.S. imports rose 0.5 percent in October, the U.S. Bureau of Labor Statistics reported today, following increases for each of the previous two months. Higher fuel and nonfuel prices each contributed to the October advance. U.S. export prices were unchanged in October after increasing 0.8 percent in September.

Chart 1. One-month percent change in the Import Price Index: October 2011 – October 2012

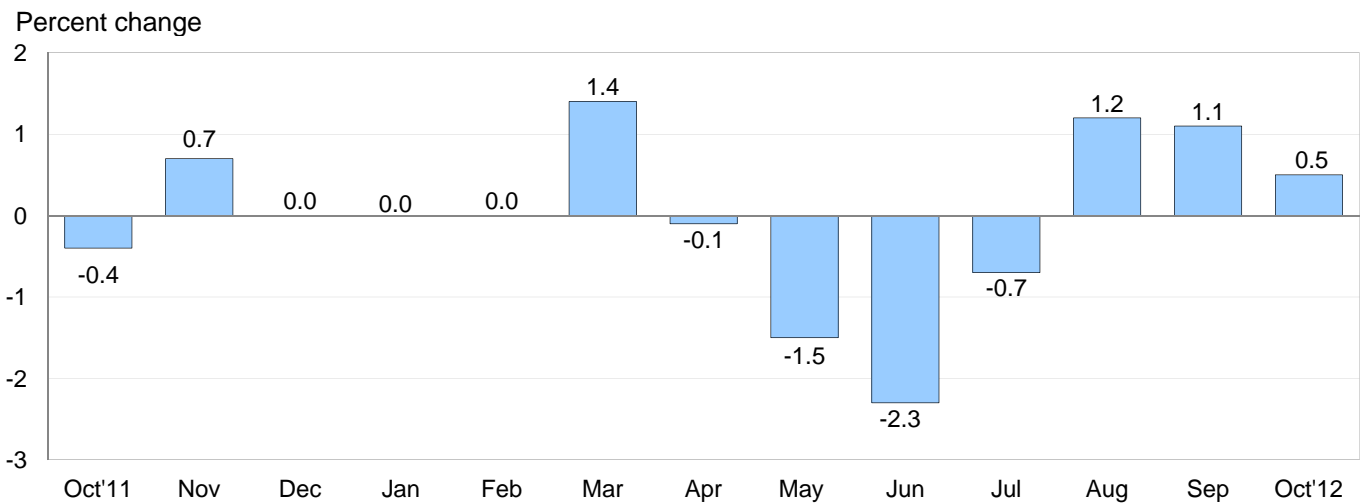
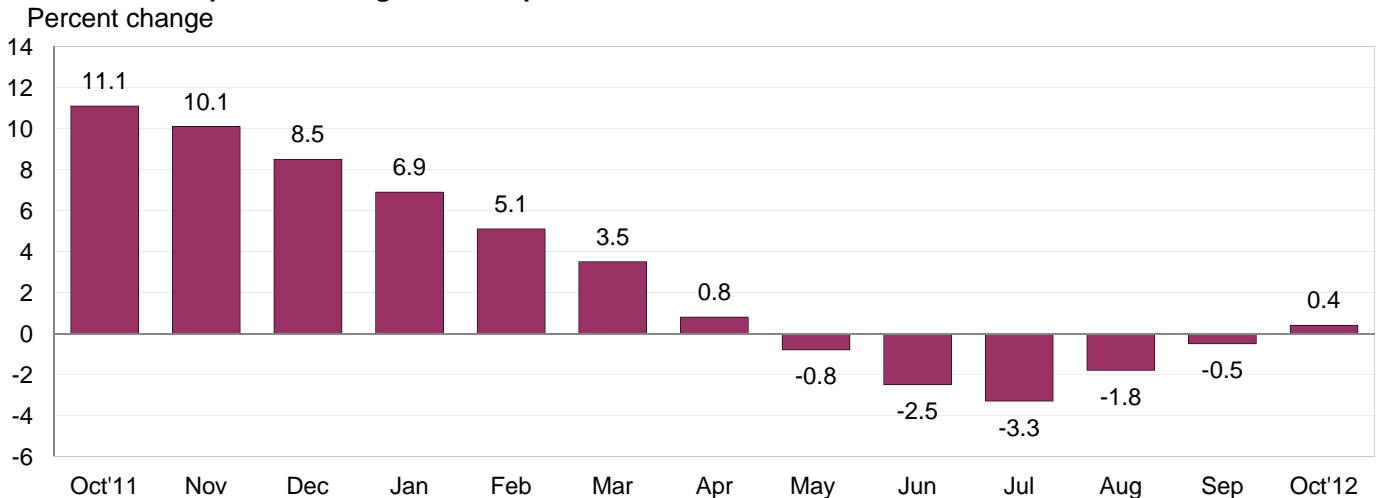


Chart 2. 12-month percent change in the Import Price Index: October 2011 – October 2012



All Imports: Import prices rose for the third consecutive month in October, increasing 0.5 percent after a 1.1 percent advance in September and a 1.2 percent rise in August. This upturn was largely driven by higher fuel prices, although nonfuel prices also increased in October and September. Led by the recent advances, overall import prices ticked up 0.4 percent for the year ended in October, which was the first 12-month rise in import prices since April.

Fuel Imports: Fuel prices increased 1.2 percent in October following advances of 4.5 percent in September and 6.1 percent in August. Prior to August, fuel prices had trended down overall in 2012. The recent increases helped drive the price index for import fuel up 1.0 percent over the past 12 months. Both the October increase in fuel prices and the advance over the past year were led by higher petroleum prices, which rose 1.3 percent for the month and 1.9 percent for the year ended in October. A 4.9 percent increase in natural gas prices also contributed to the October advance in fuel prices. Despite the October rise, natural gas prices fell 20.5 percent for the October 2011-12 period.

All Imports Excluding Fuel: The price index for nonfuel imports advanced 0.3 percent in October following a 0.2 percent rise the previous month. Those were the first monthly increases for the index since April, and each of the major finished goods categories contributed to the rise in October. Nonfuel import prices also rose over the past 12 months, ticking up 0.1 percent. Rising prices for finished goods over the year more than offset lower prices for nonfuel industrial supplies and materials and foods, feeds, and beverages.

Table A. Percent changes

Month	IMPORTS			EXPORTS		
	All imports	Fuel imports	Nonfuel imports	All exports	Agricultural exports	Non-agricultural exports
2011						
October.....	-0.4	-0.6	-0.2	-2.0	-6.5	-1.4
November.....	0.7	3.4	-0.2	0.1	1.7	-0.2
December.....	0.0	-0.4	0.1	-0.5	-2.3	-0.2
2012						
January.....	0.0	-0.2	0.2	0.3	1.1	0.2
February.....	0.0	-0.1	0.0	0.5	-0.4	0.6
March.....	1.4	4.4	0.4	0.8	2.4	0.5
April.....	-0.1	-0.9	0.2	0.4	2.0	0.2
May.....	-1.5	-5.6	-0.1	-0.5	0.5	-0.6
June.....	-2.3	-8.5	-0.3	-1.7	-3.5	-1.5
July.....	-0.7	-2.0	-0.4	0.4	6.0	-0.2
August.....	1.2 ^r	6.1 ^r	-0.2	0.9 ^r	4.7 ^r	0.4
September.....	1.1	4.5 ^r	0.2	0.8	1.2 ^r	0.7
October.....	0.5	1.2	0.3	0.0	-1.9	0.2
Oct. 2010 to 2011.....	11.1	34.3	4.8	6.3	11.5	5.8
Oct. 2011 to 2012.....	0.4	1.0	0.1	1.4	11.6	0.2

r Revised

Chart 3. One-month percent change in the Export Price Index: October 2011 – October 2012

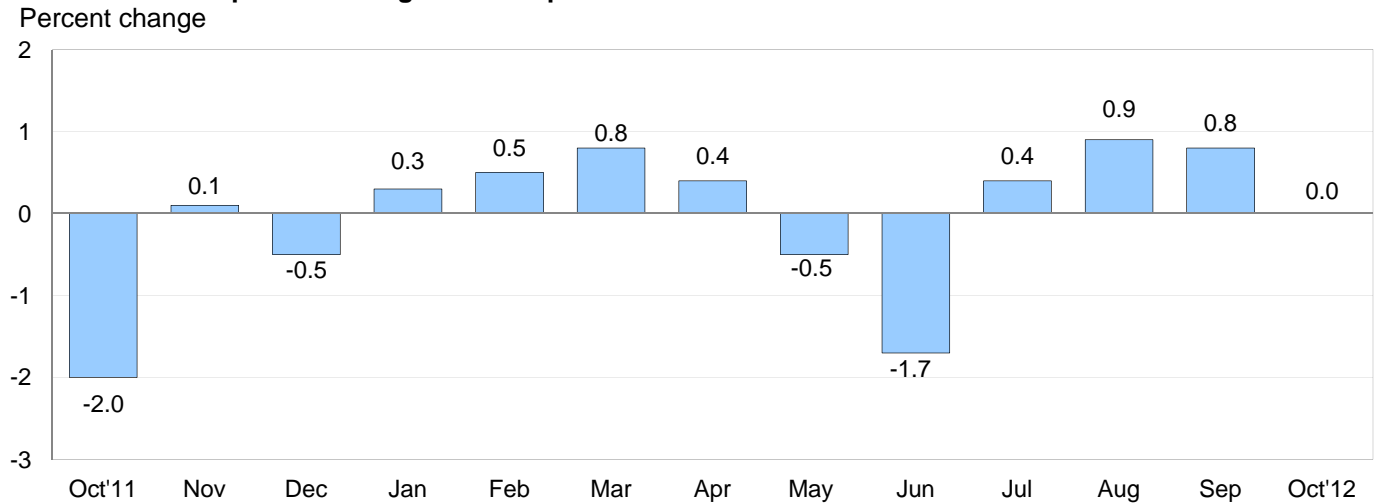
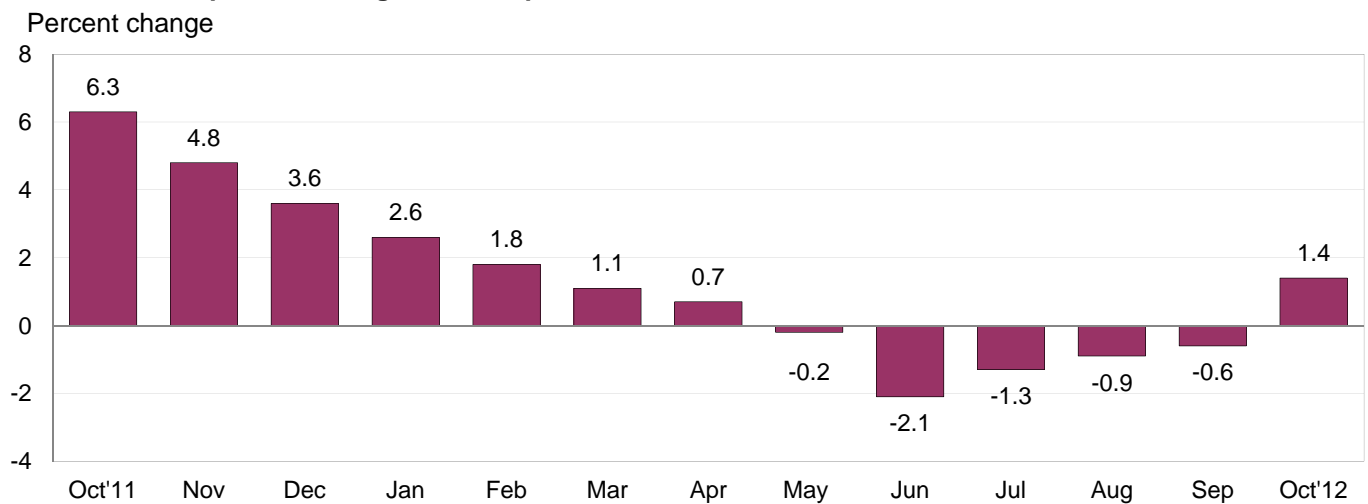


Chart 4. 12-month percent change in the Export Price Index: October 2011 – October 2012



All Exports: Export prices recorded no change in October as rising nonagricultural prices were offset by a downturn in prices for agricultural exports. The price index for overall exports had risen in each of the previous three months, advancing 2.1 percent overall for the third quarter of 2012. Prices for overall exports increased 1.4 percent over the past year, the first 12-month advance for the index since April.

Agricultural Exports: Agricultural export prices declined 1.9 percent in October, led by a 10.4 percent drop in soybeans prices. The October drop in agricultural prices followed increases of 1.2 percent, 4.7 percent, and 6.0 percent in the three previous months and the index advanced 11.6 percent for the year ended in October. 12-month advances of 37.1 percent for soybeans prices, 26.0 percent for corn prices, and 20.2 percent for wheat prices all contributed to the year-over-year rise in agricultural prices.

All Exports Excluding Agriculture: The price index for nonagricultural exports increased a relatively modest 0.2 percent in October after a 0.7 percent advance the previous month that was driven by a 4.5 percent rise in fuel prices. In contrast, fuel prices in October declined 0.8 percent. Prices for nonagricultural exports advanced 0.2 percent over the past year.

SELECTED OCTOBER HIGHLIGHTS

Import Prices

Imports by Locality of Origin: Import prices from China fell 0.3 percent in October, the largest monthly drop for the index since a 0.4 percent decline in April. The October decrease followed a 0.2 percent decline in September and for the second consecutive month was driven by lower prices for computer and electronic products, down 0.4 percent in October after declining 0.6 percent the previous month. Prices for imports from China decreased 0.4 percent over the past year, the first 12-month decline for the index since August 2010. In contrast, import prices from the European Union, Canada, Mexico, and Japan all rose in October. Import prices from the European Union increased 0.6 percent in October, paralleling a recent rise in the Euro relative to the U.S. dollar. Prices for imports from Canada rose 0.5 percent in October, while import prices from Mexico advanced 0.4 percent. The price index for imports from Japan increased 0.3 percent, the largest rise since the index advanced a similar 0.3 percent in August 2011.

Nonfuel Industrial Supplies and Materials: Nonfuel industrial supplies and materials prices rose 1.1 percent in October following a 0.2 percent decline the previous month, led by a 4.4 percent advance in unfinished metals prices.

Finished Goods: Prices for each of the major finished goods indexes advanced in October. Consumer goods prices rose 0.2 percent, led by a 0.7 percent increase for medicinal, dental, and pharmaceutical prices. The price index for automotive vehicles advanced 0.3 percent driven by a 0.6 percent increase in prices for passenger cars. Prices for capital goods also rose in October, ticking up 0.1 percent.

Foods, Feeds, and Beverages: Foods, feeds, and beverages prices advanced 0.2 percent in October after rising 1.7 percent in September. Despite the recent increases, prices for foods, feeds, and beverages fell 0.8 percent over the past 12 months.

Transportation Services: Import air passenger fares rose 2.0 percent in October following declines in each of the previous three months. The October advance was led by a 3.7 percent increase in European fares. Overall, import air passenger fares advanced 3.1 percent between October 2011 and October 2012. The price index for import air freight increased 1.3 percent in October, while decreasing 2.7 percent over the past year.

Export Prices

Nonagricultural Industrial Supplies and Materials: The price index for nonagricultural industrial supplies and materials increased 0.5 percent in October following a 1.8 percent advance the previous month. The October increase was led by a 5.4 percent rise in nonferrous metals prices.

Finished Goods: Finished goods prices were flat overall in October. Capital goods prices and prices for consumer goods each ticked up 0.1 percent, while the price index for automotive vehicles edged down 0.1 percent.

Transportation Services: Export air passenger fares fell 2.2 percent in October after decreasing 12.4 percent in September. Those declines drove the index down 2.5 percent over the past year. Prices for export air freight advanced 1.6 percent in October and 2.7 percent over the past 12 months.

Import and Export Price Index data for November 2012 are scheduled for release on Wednesday, December 12, 2012 at 8:30 a.m. (EST).

Table 1. U.S. import price indexes and percent changes for selected categories of goods: October 2011 to October 2012

[2000=100, unless otherwise noted]

Description	End Use	Relative importance Sept. 2012 ¹	Index		Percent change				
			Sept. 2012	Oct. 2012	Annual	Monthly			
					Oct. 2011 to Oct. 2012	June 2012 to July 2012	July 2012 to Aug. 2012	Aug. 2012 to Sept. 2012	Sept. 2012 to Oct. 2012
All commodities.....		100.000	141.0	141.7	0.4	-0.7	1.2	1.1	0.5
All imports excluding food and fuels (Dec. 2010=100).....		71.057	103.2	103.5	0.1	-0.4	-0.1	0.0	0.3
All imports excluding petroleum.....		77.126	115.9	116.3	-0.3	-0.3	-0.1	0.1	0.3
All imports excluding fuels (Dec. 2001=100)..		76.156	120.3	120.7	0.1	-0.4	-0.2	0.2	0.3
Foods, feeds, & beverages.....	0	5.099	171.8	172.2	-0.8	-1.0	-0.6	1.7	0.2
Agricultural foods, feeds & beverages, excluding distilled beverages.....	00	3.977	194.7	195.0	0.1	-1.0	-0.6	2.3	0.2
Nonagricultural foods (fish, distilled beverages).....	01	1.122	120.2	120.6	-4.0	-1.3	-0.7	-0.2	0.3
Industrial supplies & materials.....	1	36.888	256.7	259.8	-0.1	-1.9	3.7	2.8	1.2
Industrial supplies & materials excluding petroleum.....		14.013	162.9	164.8	-3.6	-1.3	0.0	-0.1	1.2
Industrial supplies & materials excluding fuels (Dec. 2001=100).....		13.043	186.8	188.9	-2.5	-1.8	-0.3	-0.2	1.1
Industrial supplies & materials, durable.....		7.673	174.8	178.7	-3.2	-1.0	-0.5	0.4	2.2
Industrial supplies & materials nondurable excluding petroleum.....		5.370	148.9	148.6	-4.2	-1.6	0.5	-0.7	-0.2
Fuels & lubricants.....	10	23.846	345.3	349.6	1.0	-2.0	6.1	4.5	1.2
Petroleum & petroleum products.....	100	22.876	388.0	393.0	1.9	-2.4	6.2	4.7	1.3
Crude.....	10000	17.195	396.8	402.5	3.2	-3.6	6.4	4.5	1.4
Fuels, n.e.s.-coals & gas.....	101	0.676	91.9	95.3	-18.7	10.2	4.5	0.4	3.7
Gas-natural.....	10110	0.568	77.3	81.1	-20.5	12.4	5.3	-0.3	4.9
Paper & paper base stocks.....	11	0.587	112.9	112.7	-3.9	-0.1	-0.5	-0.4	-0.2
Materials associated with nondurable supplies & materials.....	12	4.872	175.6	174.7	-1.0	-3.4	0.2	-1.0	-0.5
Selected building materials.....	13	1.049	141.0	141.3	8.4	0.5	0.6	0.9	0.2
Unfinished metals related to durable goods.....	14	3.513	256.9	268.1	-8.2	-2.0	-1.0	0.5	4.4
Finished metals related to durable goods. . .	15	1.534	161.7	163.8	0.9	0.1	-0.4	0.2	1.3
Nonmetals related to durable goods.....	16	1.488	114.1	114.1	-1.9	-0.5	-0.2	-0.1	0.0
Capital goods.....	2	22.283	93.3	93.4	0.8	0.1	-0.1	0.1	0.1
Electric generating equipment.....	20	2.893	119.3	119.5	0.8	0.3	0.0	0.1	0.2
Nonelectrical machinery.....	21	17.738	86.3	86.3	0.2	0.0	-0.1	0.2	0.0
Transportation equipment excluding motor vehicles (Dec. 2001=100).....	22	1.652	133.7	133.8	4.9	0.1	0.0	-0.2	0.1
Automotive vehicles, parts & engines.....	3	11.635	114.8	115.2	1.8	0.1	0.1	0.2	0.3
Consumer goods, excluding automotives..	4	24.096	107.2	107.4	0.2	-0.1	-0.2	-0.1	0.2
Nondurables, manufactured.....	40	11.601	114.6	114.8	0.5	0.1	-0.1	-0.2	0.2
Durables, manufactured.....	41	11.231	99.5	99.8	-0.1	-0.1	-0.1	0.0	0.3
Nonmanufactured consumer goods.....	42	1.264	115.5	115.6	0.4	-0.8	-2.5	0.1	0.1

¹ Relative importance figures are based on 2010 trade values.

NOTES: Data may be revised in each of the three months after original publication.

Dash = Not available

Table 2. U.S. export price indexes and percent changes for selected categories of goods: October 2011 to October 2012

[2000=100, unless otherwise noted]

Description	End Use	Relative importance Sept. 2012 ¹	Index		Percent change				
			Sept. 2012	Oct. 2012	Annual	Monthly			
					Oct. 2011 to Oct. 2012	June 2012 to July 2012	July 2012 to Aug. 2012	Aug. 2012 to Sept. 2012	Sept. 2012 to Oct. 2012
All commodities		100.000	134.5	134.5	1.4	0.4	0.9	0.8	0.0
Agricultural commodities		11.974	229.7	225.4	11.6	6.0	4.7	1.2	-1.9
All exports excluding food and fuels (Dec. 2010=100)		80.205	102.6	102.9	0.0	-0.4	0.1	0.4	0.3
Nonagricultural commodities		88.025	127.6	127.9	0.2	-0.2	0.4	0.7	0.2
Foods, feeds, & beverages	0	11.070	231.4	227.3	14.2	6.5	4.5	1.0	-1.8
Agricultural foods, feeds & beverages, excluding distilled beverages.....	00	10.350	235.8	231.3	15.0	7.0	4.8	1.1	-1.9
Nonagricultural foods (fish, distilled beverages).....	01	0.720	191.9	192.9	4.4	0.5	1.1	-0.6	0.5
Industrial supplies & materials	1	33.933	183.4	184.2	-1.1	-0.4	1.4	1.8	0.4
Industrial supplies & materials, durable.....		11.953	183.4	187.0	-1.6	-0.5	-0.5	1.0	2.0
Industrial supplies & materials, nondurable.....		21.979	184.3	183.5	-0.8	-0.2	2.5	2.2	-0.4
Agricultural industrial supplies & materials..	10	1.624	201.1	197.2	-6.0	-0.1	4.3	1.9	-1.9
Nonagricultural industrial supplies & materials		32.309	183.0	184.0	-0.8	-0.4	1.2	1.8	0.5
Fuels & lubricants.....	11	8.724	273.2	270.9	0.7	0.7	4.6	4.5	-0.8
Nonagricultural supplies & materials excluding fuels & building materials.....	12	22.643	171.3	173.2	-1.5	-0.8	0.1	0.9	1.1
Selected building materials.....	13	0.942	118.8	117.9	1.5	0.3	0.2	0.1	-0.8
Capital goods	2	34.185	105.6	105.7	1.1	-0.2	-0.1	0.1	0.1
Electrical generating equipment.....	20	3.516	113.9	114.2	0.4	-0.7	0.1	0.3	0.3
Nonelectrical machinery.....	21	24.744	94.8	94.9	0.6	-0.1	-0.1	0.0	0.1
Transportation equipment excluding motor vehicles (Dec. 2001=100).....	22	5.925	149.2	149.2	2.8	0.1	0.0	0.0	0.0
Automotive vehicles, parts & engines	3	8.169	113.2	113.1	1.1	0.2	-0.2	0.3	-0.1
Consumer goods, excluding automotives ..	4	12.642	116.7	116.8	-0.1	-0.6	0.0	0.3	0.1
Nondurables, manufactured.....	40	5.888	115.3	115.8	1.8	-0.2	0.2	0.3	0.4
Durables, manufactured.....	41	5.341	114.8	114.3	0.8	-0.3	-0.1	0.3	-0.4

¹ Relative importance figures are based on 2010 trade values.

NOTES: Data may be revised in each of the three months after original publication.

Dash = Not available

Table 3. U.S. import price indexes and percent changes for selected categories of goods: October 2011 to October 2012

[December 2005=100, unless otherwise noted]

Description	NAICS	Relative importance Sept. 2012 ¹	Index		Percent change				
			Sept. 2012	Oct. 2012	Annual Oct. 2011 to Oct. 2012	Monthly			
						June 2012 to July 2012	July 2012 to Aug. 2012	Aug. 2012 to Sept. 2012	Sept. 2012 to Oct. 2012
Nonmanufactured articles.....		20.354	168.1	170.7	1.1	-3.0	5.5	4.4	1.5
Agriculture, forestry, fishing and hunting...	11	1.851	173.3	175.2	-1.9	-1.5	-1.1	3.5	1.1
Crop production.....	111	1.336	182.9	183.3	-0.3	-1.5	-0.3	4.5	0.2
Mining.....	21	18.503	167.2	169.9	1.5	-3.1	6.2	4.5	1.6
Mining (except oil and gas) (Dec. 2006=100).....	212	0.329	144.5	140.2	-9.5	-0.3	-0.1	0.8	-3.0
Manufactured articles.....		79.185	117.8	118.2	0.1	-0.2	0.2	0.3	0.3
Manufactured goods, part 1.....	31	10.760	123.7	123.4	-0.1	-0.8	-0.2	-0.6	-0.2
Food manufacturing.....	311	2.951	155.2	154.1	-1.0	-2.9	-0.4	-1.5	-0.7
Beverage and tobacco product manufacturing.....	312	0.844	111.8	112.0	0.1	-0.4	0.0	0.4	0.2
Textile mills (Dec. 2011=100).....	313	0.405	102.4	102.4	-	0.2	0.2	0.5	0.0
Textile product mills.....	314	0.868	115.6	115.7	-2.5	-0.2	0.0	-0.2	0.1
Apparel manufacturing.....	315	4.046	110.9	110.7	-0.8	0.0	-0.4	-0.5	-0.2
Leather and allied product manufacturing. .	316	1.646	120.7	120.7	4.6	0.6	0.5	-0.1	0.0
Manufactured goods, part 2.....	32	18.138	140.5	140.6	-0.1	0.0	1.6	1.3	0.1
Wood product manufacturing.....	321	0.641	119.9	120.1	11.5	1.0	1.0	1.0	0.2
Paper manufacturing.....	322	1.085	110.7	110.6	-1.8	0.0	-0.4	-0.1	-0.1
Petroleum and coal products manufacturing.....	324	4.865	178.8	179.4	-0.4	2.7	5.6	4.7	0.3
Chemical manufacturing.....	325	8.727	134.4	134.3	-0.9	-1.3	0.4	0.1	-0.1
Plastics and rubber products manufacturing.....	326	1.894	127.5	127.7	1.4	-0.2	-0.1	0.2	0.2
Nonmetallic mineral product manufacturing.....	327	0.837	130.3	129.7	1.6	0.2	-0.1	0.2	-0.5
Manufactured goods, part 3.....	33	50.287	109.6	110.1	0.1	-0.1	-0.3	0.2	0.5
Primary metal manufacturing.....	331	4.087	169.4	176.8	-6.5	-1.8	-1.2	0.4	4.4
Fabricated metal product manufacturing. . .	332	2.555	130.0	130.5	1.8	0.3	-0.2	0.3	0.4
Machinery manufacturing.....	333	5.637	121.3	121.9	2.3	-0.1	0.0	0.2	0.5
Computer and electronic product manufacturing.....	334	15.451	82.3	82.3	-0.4	0.1	-0.1	0.1	0.0
Electrical equipment, appliance, and component manufacturing.....	335	3.838	118.4	118.4	1.1	0.2	0.0	-0.1	0.0
Transportation equipment manufacturing. . .	336	12.304	112.0	112.3	2.2	0.2	0.1	0.2	0.3
Furniture and related product manufacturing.....	337	1.312	113.7	113.4	0.4	-0.4	-0.2	0.3	-0.3
Miscellaneous manufacturing.....	339	5.104	120.9	121.0	-1.0	-0.1	-1.1	-0.1	0.1

¹ Relative importance figures are based on 2010 trade values.

NOTES: Data may be revised in each of the three months after original publication.

Dash = Not available

Table 4. U.S. export price indexes and percent changes for selected categories of goods: October 2011 to October 2012

[December 2005=100, unless otherwise noted]

Description	NAICS	Relative importance Sept. 2012 ¹	Index		Percent change				
			Sept. 2012	Oct. 2012	Annual Oct. 2011 to Oct. 2012	Monthly			Sept. 2012 to Oct. 2012
						June 2012 to July 2012	July 2012 to Aug. 2012	Aug. 2012 to Sept. 2012	
Nonmanufactured articles.....		8.968	180.4	174.5	5.1	8.0	4.9	0.6	-3.3
Agriculture, forestry, fishing and hunting...	11	7.121	224.9	217.0	16.4	10.1	6.0	1.2	-3.5
Crop production.....	111	6.670	234.5	225.4	17.7	11.0	5.5	1.7	-3.9
Mining.....	21	1.847	94.2	91.9	-23.5	1.0	1.3	-2.0	-2.4
Mining (except oil and gas).....	212	1.319	117.4	109.2	-24.2	-0.3	0.1	-1.5	-7.0
Manufactured articles.....		88.190	121.4	121.7	1.2	-0.2	0.5	0.8	0.2
Manufactured goods, part 1.....	31	7.245	150.0	150.4	3.7	-0.1	1.4	0.9	0.3
Food manufacturing.....	311	5.058	171.9	172.8	4.7	-0.2	1.6	1.1	0.5
Beverage and tobacco product manufacturing.....	312	0.604	128.4	127.5	11.7	1.3	3.4	2.2	-0.7
Apparel manufacturing.....	315	0.425	122.8	122.8	6.2	-0.2	0.0	1.1	0.0
Manufactured goods, part 2.....	32	26.542	135.6	135.8	2.2	-0.5	1.7	2.0	0.1
Wood product manufacturing.....	321	0.399	114.2	113.4	-0.8	-0.4	0.5	0.0	-0.7
Paper manufacturing.....	322	1.826	119.6	119.3	-3.6	0.4	0.3	-0.1	-0.3
Petroleum and coal products manufacturing.....	324	6.548	178.0	178.2	9.4	0.5	5.5	6.0	0.1
Chemical manufacturing.....	325	14.838	131.1	131.4	0.2	-1.1	0.7	0.8	0.2
Plastics and rubber products manufacturing.....	326	2.183	118.5	118.3	1.8	-0.3	-0.1	1.0	-0.2
Nonmetallic mineral product manufacturing.....	327	0.747	111.7	111.9	0.7	0.0	-0.4	0.0	0.2
Manufactured goods, part 3.....	33	54.404	113.0	113.4	0.4	-0.3	-0.2	0.3	0.4
Primary metal manufacturing.....	331	4.675	168.9	175.6	-3.7	-0.5	-1.3	1.9	4.0
Fabricated metal product manufacturing. ...	332	2.645	131.9	132.3	3.2	0.5	0.3	0.1	0.3
Machinery manufacturing.....	333	11.026	120.8	120.9	2.8	0.1	0.2	0.1	0.1
Computer and electronic product manufacturing.....	334	14.147	89.1	89.2	-0.6	-0.3	-0.3	-0.1	0.1
Electrical equipment, appliance, and component manufacturing.....	335	3.186	112.5	112.7	0.7	-0.6	0.1	0.3	0.2
Transportation equipment manufacturing....	336	13.313	117.0	117.0	1.9	0.1	-0.1	0.2	0.0
Furniture and related product manufacturing (Dec. 2011=100).....	337	0.296	103.1	104.5	-	0.0	0.0	0.1	1.4
Miscellaneous manufacturing.....	339	5.115	122.5	121.8	-2.2	-0.9	-0.1	0.7	-0.6

1 Relative importance figures are based on 2010 trade values.

NOTES: Data may be revised in each of the three months after original publication.

Dash = Not available

Table 5. U.S. import price indexes and percent changes for selected categories of goods: October 2011 to October 2012

[2000=100, unless otherwise noted]

Description	Harmoni- zied system	Relative importance Sept. 2012 ¹	Index		Percent change				
			Sept. 2012	Oct. 2012	Annual Oct. 2011 to Oct. 2012	Monthly			
						June 2012 to July 2012	July 2012 to Aug. 2012	Aug. 2012 to Sept. 2012	Sept. 2012 to Oct. 2012
Live animals; animal products.....	I	1.125	160.9	161.4	-3.8	-1.2	-1.7	0.5	0.3
Meat and edible meat offal.....	02	0.274	219.4	217.7	3.8	1.2	0.9	0.4	-0.8
Fish and crustaceans, molluscs and other aquatic invertebrates.....	03	0.568	112.6	112.8	-10.1	-2.4	-1.6	-1.2	0.2
Vegetable products.....	II	1.695	215.6	212.9	1.3	-3.4	-0.5	1.5	-1.3
Edible vegetables, roots, and tubers.....	07	0.374	373.5	380.5	19.7	-6.1	-1.9	25.8	1.9
Edible fruit and nuts; peel of citrus fruit or melons.....	08	0.456	115.2	112.2	-2.0	-0.8	-0.4	-0.9	-2.6
Coffee, tea, mate and spices.....	09	0.398	260.0	261.7	-9.9	2.2	-1.0	-3.8	0.7
Animal or vegetable fats and oils (Dec. 2009=100).....	III	0.250	127.8	126.4	-2.2	-2.5	-1.4	1.8	-1.1
Prepared foodstuffs, beverages, and tobacco.....	IV	2.380	157.6	158.0	0.1	-0.5	0.3	0.4	0.3
Cocoa and cocoa preparations (Dec. 2009=100).....	18	0.182	84.5	86.9	-7.9	-4.8	3.9	1.1	2.8
Preparations of cereals, flour, starch or milk; bakers' wares (Dec. 2007=100).....	19	0.231	128.8	129.8	3.3	1.2	0.3	0.5	0.8
Preparations of vegetables, fruit, nuts, or other parts of plants.....	20	0.343	169.9	167.6	2.7	-0.1	-0.5	0.1	-1.4
Beverages, spirits, and vinegar.....	22	0.796	122.0	122.4	-0.2	-0.6	0.0	0.4	0.3
Mineral products.....	V	23.540	347.6	352.0	1.2	-2.0	6.0	4.5	1.3
Mineral fuels, oils and residuals, bituminous substances and mineral waxes.....	27	23.234	343.9	348.5	1.4	-2.0	6.1	4.6	1.3
Products of the chemical or allied industries.....	VI	8.302	150.5	150.7	0.5	-0.7	0.3	0.2	0.1
Inorganic chemicals.....	28	0.988	397.4	393.3	2.9	1.8	1.2	0.6	-1.0
Organic chemicals.....	29	2.435	138.5	139.1	0.8	0.1	0.5	-0.3	0.4
Pharmaceutical products.....	30	3.019	117.0	118.3	1.7	-0.4	0.0	0.1	1.1
Fertilizers (Dec. 2009=100).....	31	0.433	136.4	134.7	-10.3	-12.6	0.1	0.0	-1.2
Tanning extracts; dye, pigments, varnish, paints & putty (Dec. 2011=100).....	32	0.180	103.5	93.2	-	-1.5	-0.3	0.0	-10.0
Essential oils and resinoids (Dec. 2001=100).....	33	0.416	125.4	126.1	-0.1	0.2	0.4	-0.2	0.6
Miscellaneous chemical products.....	38	0.469	101.8	100.7	-5.1	-0.2	-0.3	-0.1	-1.1
Plastics and articles thereof; rubber and articles thereof.....	VII	3.070	151.1	151.9	-1.0	-1.0	0.0	-0.1	0.5
Plastics and articles thereof.....	39	1.868	142.8	142.9	0.3	-1.1	0.1	0.3	0.1
Rubber and articles thereof.....	40	1.202	167.1	169.0	-3.1	-0.7	-0.2	-0.5	1.1
Raw hides, skins, leather, furskins, travel goods, etc.....	VIII	0.586	126.2	126.2	2.9	-0.1	0.0	-0.1	0.0
Articles of leather; travel goods, bags, etc. of various materials.....	42	0.539	126.9	126.9	3.2	-0.1	-0.1	-0.1	0.0
Wood, wood charcoal, cork, straw, basketware and wickerwork.....	IX	0.675	145.4	146.0	12.1	1.2	1.0	1.1	0.4
Woodpulp, recovered paper, and paper products.....	X	1.189	113.7	113.7	-1.1	-0.1	-0.1	-0.1	0.0
Pulp wood, waste paper, and paperboard (Dec. 2011=100).....	47	0.178	99.8	98.6	-	-0.1	-1.9	-2.1	-1.2
Paper and paperboard; articles of paper pulp, paper or paperboard.....	48	0.795	108.5	108.9	-0.5	-0.1	0.1	0.3	0.4
Textile and textile articles.....	XI	5.175	114.5	114.3	-1.3	0.0	-0.3	-0.3	-0.2
Articles of apparel and clothing accessories, knitted or crocheted.....	61	1.993	104.8	104.4	-2.3	0.3	-0.6	-0.9	-0.4

See footnotes at end of table.

Table 5. U.S. import price indexes and percent changes for selected categories of goods: October 2011 to October 2012 — Continued
 [2000=100, unless otherwise noted]

Description	Harmonized system	Relative importance Sept. 2012 ¹	Index		Percent change				
			Sept. 2012	Oct. 2012	Annual	Monthly			
					Oct. 2011 to Oct. 2012	June 2012 to July 2012	July 2012 to Aug. 2012	Aug. 2012 to Sept. 2012	Sept. 2012 to Oct. 2012
Articles of apparel and clothing accessories, not knitted or crocheted.....	62	1.908	117.3	117.2	0.3	-0.3	-0.3	-0.1	-0.1
Made-up or worn textile articles.....	63	0.629	108.5	108.6	-3.9	-0.3	0.0	0.1	0.1
Headgear, umbrellas, artificial flowers, etc. . .	XII	1.348	120.1	120.0	4.3	0.7	0.6	-0.1	-0.1
Footwear and parts of such articles.....	64	1.150	119.6	119.5	4.6	0.8	0.8	0.0	-0.1
Stone, plaster, cement, asbestos, ceramics, glass etc.....	XIII	0.758	132.4	132.1	1.4	0.1	-0.2	0.3	-0.2
Articles of stone, plaster, cement, asbestos, or mica (Dec. 2001=100).....	68	0.245	126.5	125.3	1.1	0.2	-0.2	0.8	-0.9
Ceramic products.....	69	0.227	142.1	142.2	0.8	0.0	0.0	0.0	0.1
Glass and glassware.....	70	0.287	127.1	127.1	2.0	0.0	-0.2	0.2	0.0
Pearls, stones, precious metals, imitation jewelry, and coins.....	XIV	3.240	199.4	208.1	1.0	-0.2	-1.6	2.0	4.4
Base metals and articles of base metals.....	XV	4.729	183.9	185.5	-4.5	-1.4	-0.5	-0.6	0.9
Iron and steel.....	72	1.055	227.7	220.5	-13.6	-2.4	-1.4	-2.1	-3.2
Articles of iron or steel.....	73	1.402	159.7	159.7	-1.1	0.2	-0.4	-0.5	0.0
Copper and articles thereof.....	74	0.438	342.7	365.1	1.9	-4.2	1.5	0.9	6.5
Nickel and articles thereof (Dec. 2009=100)...	75	0.123	95.0	101.6	-13.9	-2.3	-1.2	-2.5	6.9
Aluminum and articles thereof.....	76	0.671	132.6	138.1	-6.3	-2.0	-1.1	-0.6	4.1
Tools, implements, cutlery, spoons and forks, of base metal; parts thereof.....	82	0.363	128.6	128.1	3.6	0.0	0.0	0.3	-0.4
Miscellaneous articles of base metal.....	83	0.412	136.2	135.3	2.7	0.0	0.4	0.1	-0.7
Machinery, electrical equipment, TV image and sound recorders, parts, etc.....	XVI	24.747	85.9	85.9	0.4	0.0	0.0	0.2	0.0
Machinery and mechanical appliances; parts thereof.....	84	12.509	90.1	90.1	1.7	0.0	-0.1	0.4	0.0
Electrical machinery and equip, sound and TV recorders & reproducers, parts.....	85	12.238	81.8	81.9	-1.0	0.0	0.0	0.0	0.1
Vehicles, aircraft, vessels and associated transport equipment.....	XVII	10.249	116.2	116.6	1.7	0.3	0.0	0.1	0.3
Motor vehicles and their parts.....	87	9.452	115.2	115.7	1.7	0.3	0.1	0.0	0.4
Aircraft, spacecraft, and parts thereof (Dec. 2002=100).....	88	0.703	118.0	118.1	2.0	0.4	0.0	-0.6	0.1
Optical, photo, measuring, medical & musical instruments; & timepieces.....	XVIII	3.199	104.0	104.3	-0.9	0.2	-0.6	0.1	0.3
Optical, photographic, measuring and medical instruments.....	90	2.944	101.4	101.7	-1.3	0.2	-0.6	0.0	0.3
Clocks and watches and parts thereof.....	91	0.195	130.1	130.9	2.3	0.5	-0.1	0.2	0.6
Miscellaneous manufactured articles.....	XX	3.685	112.4	112.8	1.1	-0.2	0.0	-0.2	0.4
Furniture & stuffed furnishings; lamps & lighting fittings, nesoi; prefab bldgs.....	94	1.972	116.6	116.8	1.3	-0.1	-0.1	0.3	0.2
Toys, games and sports equipment; parts and accessories thereof.....	95	1.512	104.5	105.0	0.6	-0.4	0.0	-0.5	0.5
Miscellaneous manufactured articles.....	96	0.202	135.5	135.7	1.9	-0.1	0.0	-0.9	0.1

¹ Relative importance figures are based on 2010 trade values.

NOTES: Data may be revised in each of the three months after original publication.

Dash = Not available

Table 6. U.S. export price indexes and percent changes for selected categories of goods: October 2011 to October 2012

[2000=100, unless otherwise noted]

Description	Harmoni- zied system	Relative importance Sept. 2012 ¹	Index		Percent change				
			Sept. 2012	Oct. 2012	Annual Oct. 2011 to Oct. 2012	Monthly			
						June 2012 to July 2012	July 2012 to Aug. 2012	Aug. 2012 to Sept. 2012	Sept. 2012 to Oct. 2012
Live animals; animal products.....	I	1.921	207.0	212.0	1.8	-0.9	5.1	-1.9	2.4
Meat & edible meat offal (Dec. 2006=100). . .	02	1.128	166.6	168.6	-1.2	-1.3	1.2	0.8	1.2
Fish and crustaceans, molluscs and other aquatic invertebrates.....	03	0.427	208.6	209.9	5.5	-0.5	1.5	-0.7	0.6
Vegetable products.....	II	6.701	287.0	276.7	21.9	11.2	5.3	1.6	-3.6
Edible fruit and nuts; peel of citrus fruit or melons.....	08	0.846	136.7	143.0	15.3	-2.4	-2.4	2.9	4.6
Cereals.....	10	2.566	335.8	332.5	21.2	17.4	9.4	-1.1	-1.0
Oilseeds and misc. grains, seeds, fruits, plants, straw and fodder.....	12	2.685	335.4	304.5	32.6	14.0	5.4	4.4	-9.2
Animal or vegetable fats and oils (Dec. 2009=100).....	III	0.466	147.2	143.4	-5.0	-2.1	-0.3	1.7	-2.6
Prepared foodstuffs, beverages, and tobacco.....	IV	2.860	166.7	167.4	9.8	0.9	3.0	1.6	0.4
Preparations of vegetables, fruit, nuts or other parts of plants (Dec. 2009=100).....	20	0.310	112.5	110.8	0.7	0.5	0.7	0.3	-1.5
Beverages, spirits, and vinegar (Dec. 2008=100).....	22	0.381	109.9	110.9	5.2	-0.1	0.0	0.1	0.9
Residues and waste from the food industries; prepared animal feed.....	23	0.927	281.6	285.1	28.8	3.8	8.2	5.0	1.2
Mineral products.....	V	8.667	320.4	317.8	0.0	-0.1	4.4	4.1	-0.8
Mineral fuels, oils and residuals, bituminous substances and mineral waxes.....	27	8.079	317.8	314.8	0.3	0.0	4.8	4.4	-0.9
Products of the chemical or allied industries.....	VI	12.126	154.6	155.0	0.5	-0.5	0.5	0.3	0.3
Inorganic chemicals.....	28	0.996	185.2	183.3	-6.1	0.8	-0.1	0.4	-1.0
Organic chemicals.....	29	3.376	165.5	166.5	1.2	-2.1	1.6	0.8	0.6
Pharmaceutical products.....	30	3.134	124.6	125.1	0.6	-0.2	0.2	0.4	0.4
Essential oils and resinoids; perfumery cosmetic or toilet preparations.....	33	0.759	136.8	136.3	2.0	0.7	0.1	-0.2	-0.4
Soap; lubricants; waxes, polishing or scouring products; candles, pastes.....	34	0.463	123.0	123.0	-0.2	-0.1	-0.1	0.0	0.0
Miscellaneous chemical products.....	38	1.760	153.8	153.5	2.2	0.3	0.0	0.3	-0.2
Plastics and articles thereof; rubber and articles thereof.....	VII	5.418	148.7	148.7	-1.5	-1.7	0.8	1.4	0.0
Plastics and articles thereof.....	39	4.362	140.0	139.9	-0.5	-1.7	1.0	1.7	-0.1
Rubber and articles thereof.....	40	1.056	189.6	189.5	-5.6	-1.9	-0.1	-0.2	-0.1
Raw hides, skins, leather, furskins, travel goods, etc.....	VIII	0.370	131.8	133.1	2.1	-0.1	1.6	-0.2	1.0
Wood, wood charcoal, cork, straw, basketware and wickerwork.....	IX	0.543	110.9	110.6	1.2	-0.3	0.0	0.8	-0.3
Woodpulp, recovered paper, and paper products.....	X	2.234	114.5	115.8	-7.1	-0.2	-1.5	-1.1	1.1
Woodpulp and recovered paper.....	47	0.562	111.2	113.6	-22.0	-1.3	-6.4	-4.5	2.2
Paper and paperboard; articles of paper pulp, paper or paperboard.....	48	1.219	117.2	117.4	-1.3	0.2	0.3	0.1	0.2
Printed material.....	49	0.453	121.3	124.3	4.2	0.7	0.1	0.1	2.5
Textile and textile articles.....	XI	1.894	126.2	124.6	-8.3	-0.3	0.8	0.6	-1.3
Cotton, including yarns and woven fabrics thereof.....	52	0.533	134.4	130.1	-29.0	-2.0	2.8	1.1	-3.2
Stone, plaster, cement, asbestos, ceramics, glass etc.....	XIII	0.737	117.8	119.0	1.9	0.1	0.0	0.0	1.0
Glass and glassware.....	70	0.397	98.5	98.9	-0.5	-0.1	0.1	0.0	0.4

See footnotes at end of table.

Table 6. U.S. export price indexes and percent changes for selected categories of goods: October 2011 to October 2012 — Continued
 [2000=100, unless otherwise noted]

Description	Harmonized system	Relative importance Sept. 2012 ¹	Index		Percent change				
			Sept. 2012	Oct. 2012	Annual	Monthly			
					Oct. 2011 to Oct. 2012	June 2012 to July 2012	July 2012 to Aug. 2012	Aug. 2012 to Sept. 2012	Sept. 2012 to Oct. 2012
Pearls, stones, precious metals, imitation jewelry, and coins.....	XIV	5.229	280.2	289.9	-2.0	-0.9	-1.2	3.1	3.5
Base metals and articles of base metals.....	XV	5.372	170.8	171.5	-2.7	-0.6	-0.1	-0.5	0.4
Iron and steel.....	72	1.558	199.0	195.5	-12.8	-3.1	0.6	-2.5	-1.8
Articles of iron or steel.....	73	1.350	173.1	173.1	1.1	0.6	-0.2	0.0	0.0
Copper and articles thereof.....	74	0.638	247.2	257.9	10.4	1.5	-1.5	2.0	4.3
Aluminum and articles thereof.....	76	0.805	124.2	127.1	-2.0	-1.0	-0.2	0.6	2.3
Tools, implements, cutlery, spoons and forks, of base metal; parts thereof.....	82	0.381	131.7	133.1	3.7	1.9	0.1	0.0	1.1
Miscellaneous articles of base metal.....	83	0.336	146.0	146.0	7.6	0.0	0.1	0.0	0.0
Machinery, electrical equipment, TV image and sound recorders, parts, etc.....	XVI	27.335	96.9	96.9	0.5	-0.2	-0.2	0.1	0.0
Machinery and mechanical appliances; parts thereof.....	84	15.932	110.6	110.6	1.9	-0.1	0.0	0.1	0.0
Electrical machinery and equipment and parts and accessories thereof.....	85	11.403	82.1	82.1	-1.3	-0.5	-0.2	0.0	0.0
Vehicles, aircraft, vessels and associated transport equipment.....	XVII	10.885	126.9	126.8	2.0	0.2	-0.2	0.1	-0.1
Motor vehicles and their parts.....	87	7.192	113.0	113.0	1.7	0.2	-0.1	-0.1	0.0
Optical, photo, measuring, medical & musical instruments; & timepieces.....	XVIII	5.761	106.2	106.5	0.8	0.0	0.0	0.2	0.3
Miscellaneous manufactured articles.....	XX	1.336	110.3	110.7	1.9	0.0	-0.1	0.0	0.4
Furniture; stuffed furnishings; lamps and lighting fittings nesoi;.....	94	0.691	120.0	120.9	1.2	0.1	-0.1	0.1	0.8
Toys, games and sports equipment; parts and accessories thereof.....	95	0.514	90.9	90.9	1.1	0.0	-0.3	0.0	0.0

1 Relative importance figures are based on 2010 trade values.

NOTES: Data may be revised in each of the three months after original publication.

Dash = Not available

Table 7. U.S. import price indexes and percent changes by locality of origin: October 2011 to October 2012
 [2000=100, unless otherwise noted]

Description	Relative importance Sept. 2012 ¹	Index		Percent change				
		Sept. 2012	Oct. 2012	Annual	Monthly			
				Oct. 2011 to Oct. 2012	June 2012 to July 2012	July 2012 to Aug. 2012	Aug. 2012 to Sept. 2012	Sept. 2012 to Oct. 2012
Industrialized Countries²	100.000	131.5	132.1	-0.4	-0.6	0.3	1.3	0.5
Nonmanufactured articles.....	12.583	227.2	229.6	-1.9	-2.2	6.0	8.1	1.1
Manufactured articles.....	86.791	123.7	124.2	-0.2	-0.4	-0.5	0.5	0.4
Other Countries³	100.000	140.9	141.4	0.5	-0.7	1.5	0.9	0.4
Nonmanufactured articles.....	25.329	355.1	361.3	2.3	-3.3	5.5	3.3	1.7
Manufactured articles.....	74.323	111.6	111.4	-0.4	0.2	0.1	0.1	-0.2
Canada	100.000	151.1	151.8	-1.0	-1.7	1.7	2.6	0.5
Nonmanufactured articles.....	29.113	213.1	215.7	-3.1	-2.6	5.2	8.2	1.2
Manufactured articles.....	69.865	138.6	139.0	-0.1	-1.4	0.4	0.4	0.3
European Union⁴	100.000	134.3	135.1	-1.5	-0.2	-0.1	-0.1	0.6
Nonmanufactured articles.....	2.364	377.5	382.1	3.3	-0.4	11.2	0.1	1.2
Manufactured articles.....	97.423	130.5	131.3	-1.6	-0.2	-0.4	-0.2	0.6
France (Dec. 2003=100)	100.000	119.8	119.7	-0.7	-0.5	-0.3	0.0	-0.1
Germany (Dec. 2003=100)	100.000	114.3	114.7	-0.8	0.1	-0.4	0.3	0.3
United Kingdom (Dec. 2003=100)	100.000	134.5	135.3	1.7	-0.2	1.5	0.4	0.6
Latin America⁵	100.000	179.0	180.3	1.3	-0.3	1.9	1.6	0.7
Nonmanufactured articles.....	35.716	387.0	393.7	4.8	-0.3	5.4	4.1	1.7
Manufactured articles.....	63.837	133.7	134.0	-0.9	-0.4	0.2	0.3	0.2
Mexico (Dec. 2003=100)	100.000	145.7	146.3	-0.2	-0.1	1.0	0.8	0.4
Nonmanufactured articles (Dec. 2008=100).....	21.618	206.5	210.9	4.7	-0.5	6.5	3.4	2.1
Manufactured articles (Dec. 2008=100)....	78.045	94.7	94.6	-1.7	0.0	-0.3	0.1	-0.1
Pacific Rim (Dec. 2003=100)⁶	100.000	104.3	104.4	-0.1	0.0	-0.1	-0.1	0.1
China (Dec. 2003=100)	100.000	104.7	104.4	-0.4	0.0	0.0	-0.2	-0.3
Japan	100.000	102.8	103.1	1.2	0.0	0.1	0.1	0.3
Asian NICs⁷	100.000	91.0	91.3	0.4	0.0	0.0	0.2	0.3
ASEAN (Dec. 2003=100)⁸	100.000	104.6	104.5	-0.2	-0.2	-0.3	0.1	-0.1
Asia Near East (Dec. 2003=100)⁹	100.000	262.6	265.7	-4.0	-5.1	3.2	-0.8	1.2

1 Relative figures are based on 2010 trade values.

2 Includes Western Europe, Canada, Japan, Australia, New Zealand and South Africa.

3 Includes Eastern Europe, Latin America, OPEC countries, and other countries in Asia, Africa and the Western Hemisphere.

4 Includes European Union countries.

5 Includes Mexico, Central America, South America and the Caribbean.

6 Includes China, Japan, Australia, Brunei, Indonesia, Macao, Malaysia, New Zealand, Papua New Guinea, Philippines and Asian Newly Industrialized Countries.

7 Asian Newly Industrialized Countries. Includes Hong Kong, Singapore, South Korea and Taiwan.

8 Association of Southeast Asian Nations. Includes Brunei, Cambodia, Indonesia, Laos, Malaysia, Myanmar, Philippines, Singapore, Thailand and Vietnam.

9 Includes Bahrain, Iran, Iraq, Israel, Jordan, Kuwait, Lebanon, Oman, Qatar, Saudi Arabia, Syria, United Arab Emirates and Yemen.

NOTES: Data may be revised in each of the three months after original publication.

Regions are not mutually exclusive.

Dash = Not available

Table 8. U.S. international price indexes and percent changes for selected transportation services: October 2011 to October 2012

[2000=100, unless otherwise noted]

Description	Relative importance Sept. 2012 ¹	Index		Percent change				
		Sept. 2012	Oct. 2012	Annual	Monthly			
				Oct. 2011 to Oct. 2012	June 2012 to July 2012	July 2012 to Aug. 2012	Aug. 2012 to Sept. 2012	Sept. 2012 to Oct. 2012
Air Freight								
Import Air Freight	100.000	173.9	176.2	-2.7	-1.4	-1.6	0.3	1.3
Europe (Dec. 2003=100).....	23.546	157.7	164.4	-5.8	-2.7	-0.9	1.0	4.2
Asia.....	71.907	155.7	156.5	-1.7	-1.1	-2.0	0.1	0.5
Export Air Freight	100.000	146.8	149.2	2.7	-2.2	-1.0	2.5	1.6
Europe (Dec. 2006=100).....	36.080	132.2	130.5	-1.0	-1.6	-1.0	1.7	-1.3
Inbound Air Freight	100.000	163.2	165.3	1.2	-1.0	-0.3	1.4	1.3
Europe (Dec. 2003=100).....	23.946	145.2	150.3	-1.8	-1.4	-1.0	1.4	3.5
Asia.....	64.860	149.7	150.6	2.4	-0.9	-0.1	1.4	0.6
Outbound Air Freight	100.000	146.8	147.8	2.3	-2.8	0.0	1.4	0.7
Europe (Dec. 2003=100).....	30.754	164.3	162.5	-0.8	-1.2	0.1	0.7	-1.1
Asia.....	49.359	138.7	140.1	3.8	-4.2	-0.1	1.8	1.0
Air Passenger Fares								
Import Air Passenger Fares	100.000	179.8	183.4	3.1	-3.2	-5.5	-1.6	2.0
Europe.....	40.000	191.2	198.2	6.3	-7.1	-8.0	0.6	3.7
Asia.....	26.651	152.6	152.1	0.5	-1.2	-3.5	-5.4	-0.3
Latin America/Caribbean.....	10.891	156.8	159.2	-6.9	1.3	-2.0	-9.1	1.5
Export Air Passenger Fares	100.000	187.9	183.7	-2.5	4.8	0.8	-12.4	-2.2
Europe.....	27.261	219.2	212.6	-7.4	1.1	-5.3	-9.8	-3.0
Asia.....	28.280	170.2	166.9	-2.7	3.2	24.4	-25.9	-1.9
Latin America/Caribbean.....	24.300	221.2	216.8	15.6	6.0	-6.6	-0.3	-2.0

¹ Relative importance figures are based on 2010 trade values.

NOTES: Data may be revised in each of the three months after original publication.

Dash = Not available

TECHNICAL NOTE

Import and Export Merchandise and Services Price Indexes -- All indexes use a modified Laspeyres formula and are not seasonally adjusted. Price indexes are reweighted annually, with a two-year lag in the weights. Published series use a base year of 2000=100 where possible. More detailed index series and additional information may be obtained at <http://www.bls.gov/mxp>, or by calling (202) 691-7101.

Merchandise Goods Classification Systems -- The merchandise price indexes are published using three classification systems. Items are classified by end use according to the Bureau of Economic Analysis Classification System, by industry according to the North American Industry Classification System (NAICS), and by product category according to the Harmonized System (HS). While classification by end use and product category are self-explanatory, some notes are in order for classifying items by industry. In the NAICS imports and exports tables, items are classified by output industry, not input industry. As an example, NAICS import index 326 (plastics and rubber products manufacturing) include outputs such as manufactured plastic rather than inputs such as petroleum. The NAICS classification structure also matches the classification system used by the PPI (Producer Price Index) to produce the NAICS primary products indexes.

Import Price Indexes -- Products have been classified by the Harmonized Tariff Schedule of the United States Annotated (TSUSA). Import prices are based on U.S. dollar prices paid by the U.S. importer. The prices are generally either "free on board" (f.o.b.) foreign port or "cost, insurance, and freight" (c.i.f.) U.S. port transaction prices, depending on the practices of the individual industry. The index for crude petroleum is calculated from data collected by the U.S. Department of Energy.

Export Price Indexes -- Products have been classified by the Harmonized Schedule B classification system of the U.S. Bureau of the Census. The prices used are generally either "free alongside ship" (f.a.s.) factory or "free on board" (f.o.b.) transaction prices, depending on the practices of the individual industry. Prices used in the grain index, excluding rice, are obtained from the U.S. Department of Agriculture.

Services Price Indexes -- Starting in September 2008 the Import Air Passenger Fares Indexes represent changes in the average revenue per passenger received by foreign carriers from U.S. residents and are calculated from data obtained from an airline consulting service. These data include tickets sold by travel agencies and travel websites. Tickets sold directly by the airlines are excluded, as are frequent flyer tickets generally. Starting in January 2008 the Export Air Passenger Fares Indexes represent changes in the average revenue per passenger received by U.S. carriers from foreign residents and are calculated from data collected directly from airlines. These data include frequent flyer tickets and those sold by consolidators. Taxes and fees are included in the Import Air Passenger Fares Index and excluded from the Export Air Passenger Fares Index. The Air Freight Indexes are calculated from data collected directly from airlines. These data exclude mail and passenger baggage. The scope of the service being priced is the movement of freight from airport to airport only, and does not include any ground transportation or port service. The Air Freight Indexes are presented using two definitions: Balance of Payments (which represent transactions between U.S. and foreign residents) and International (which represent transactions inbound to and outbound from the U.S.). Fact sheets specifying detailed information for each services industry are available at <http://www.bls.gov/mxp> under "MXP Publications."

Import Indexes by Locality of Origin -- Prices used in these indexes are a subset of the data collected for the Import Price Indexes. Beginning with January 2002, the indexes are defined by locality of origin using a nomenclature based upon the North American Industry Classification System (NAICS). Nonmanufactured goods are defined as NAICS 11 and 21 and manufactured goods are defined as NAICS 31-33.

Revision Policy -- To reflect the availability of late reports and corrections by respondents, monthly data may be revised in each of the three months after original publication. After three months, no further data revisions take place. So, for example, data released in the January release will be subject to revision in the releases for February, March, and April.

Uses of the Data -- The primary use of the indexes is to deflate trade statistics, notably the foreign trade sector of the National Income and Product Accounts constructed by the Department of Commerce. Other published indexes are useful for general market analysis. For trade in international services, Balance of Payments indexes are used for deflating National Income and Product Accounts, while International indexes are more appropriate for market analysis. Merchandise and services indexes also can be used to study U.S. competitiveness and to compute price elasticities, and the merchandise import indexes by country or region of origin are useful in terms of trade analysis.

E-Mail Subscription -- The U.S. Import and Export Price Indexes news release is available through an e-mail subscription service at (<http://www.bls.gov/bls/list.htm>).

Additional Information -- More detailed data are available on the Import/Export Price Indexes home page at (<http://www.bls.gov/mxp>). Flat Files and the FTP server are available for users requiring access to either a large volume of time series data or other related documentation. The FTP site can be accessed at <ftp://ftp.bls.gov>. For technical assistance in using the BLS Internet site, send e-mail to (labstat.helpdesk@bls.gov). For Import/Export Price Index data requests, send e-mail to (mxpinfo@bls.gov).

Information from this release will be made available to sensory impaired individuals upon request. Voice phone: 202-691-5200; Federal Relay Service: 1-800-877-8339.