

Transmission of material in this release is embargoed until  
8:30 a.m. (EST) Friday, December 11, 2009

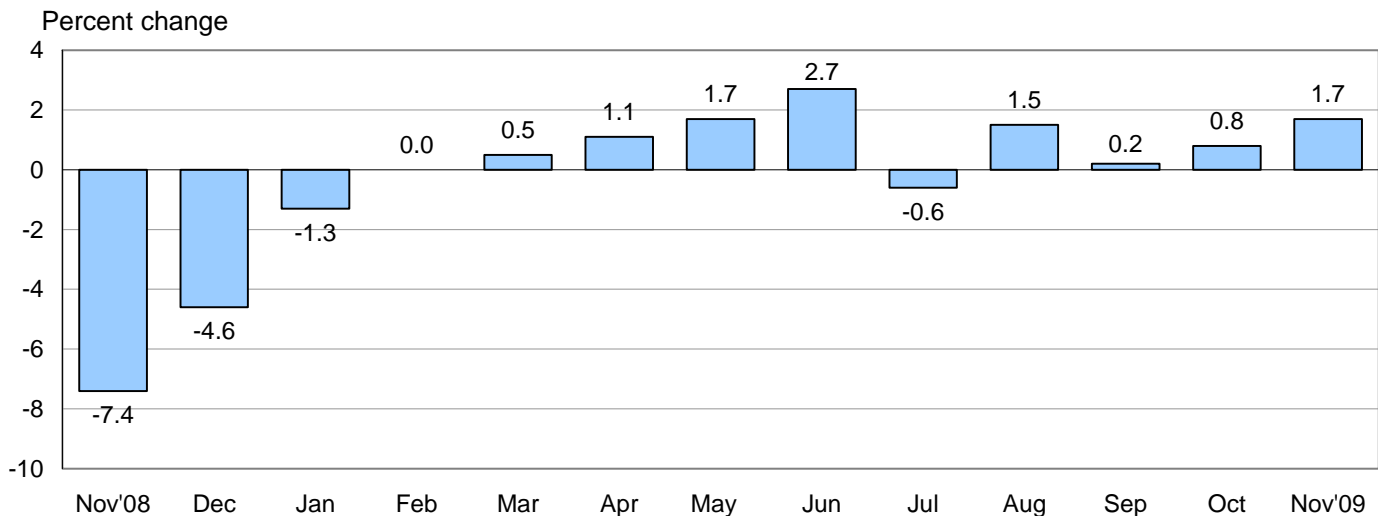
USDL-09-1504

Technical information: (202) 691-7101 • MXPinfo@bls.gov • www.bls.gov/mxp  
Media contact: (202) 691-5902 • PressOffice@bls.gov

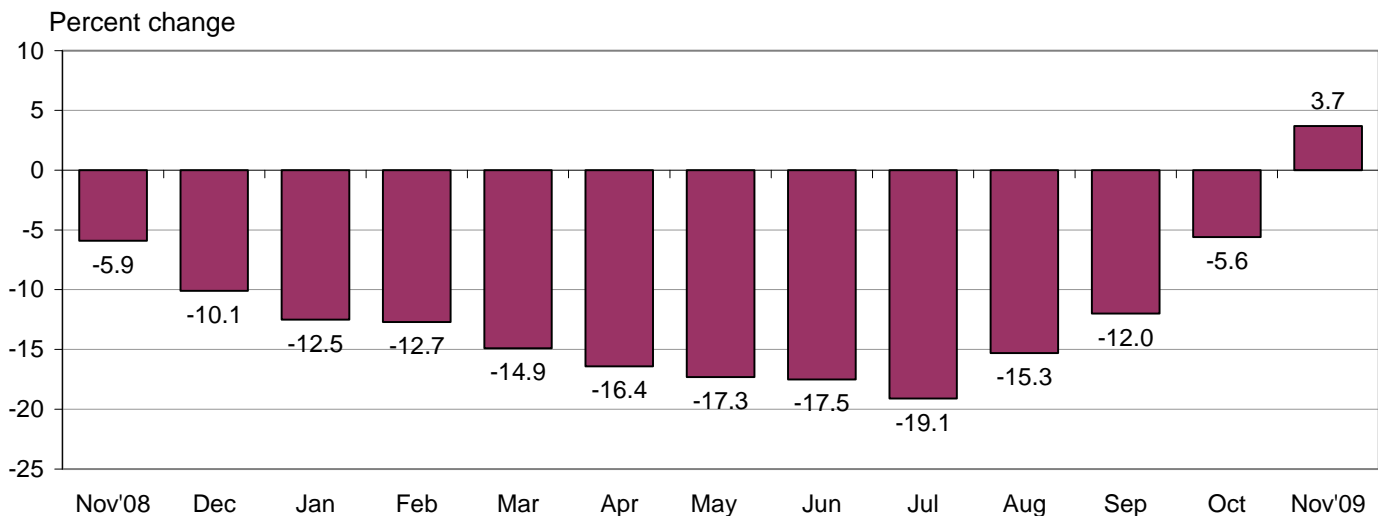
### U.S. IMPORT AND EXPORT PRICE INDEXES – NOVEMBER 2009

The U.S. Import Price Index advanced 1.7 percent in November, the U.S. Bureau of Labor Statistics reported today, led by a 7.3 percent rise in fuel prices. The increase followed a 0.8 percent advance in October. U.S. export prices rose 0.8 percent in November after a 0.2 percent increase the previous month.

**Chart 1. One-month percent change in the Import Price Index: November 2008 – November 2009**



**Chart 2. 12-month percent change in the Import Price Index: November 2008 – November 2009**



**All Imports:** The 1.7 percent increase in U.S. imports in November continued the upward trend for the index. Import prices have risen in eight of the past nine months, increasing 10.1 percent over that period. The November advance for overall import prices was driven by higher fuel prices, which accounted for approximately 80 percent of the increase. The price index for U.S. imports advanced 3.7 percent for the year ended in November, the first time the index increased over a 12-month period since a 4.9 percent advance for the October 2007-2008 period.

**Fuel Imports:** Prices for import fuel rose 7.3 percent in November after a 2.5 percent increase the previous month. A 6.2 percent increase for petroleum prices and a 30.0 percent increase for natural gas prices led the overall advance in November. Over the past 12 months, fuel prices increased 27.0 percent. A 35.5 percent rise in petroleum prices more than offset declining natural gas prices, which fell 31.3 percent despite the advance in November.

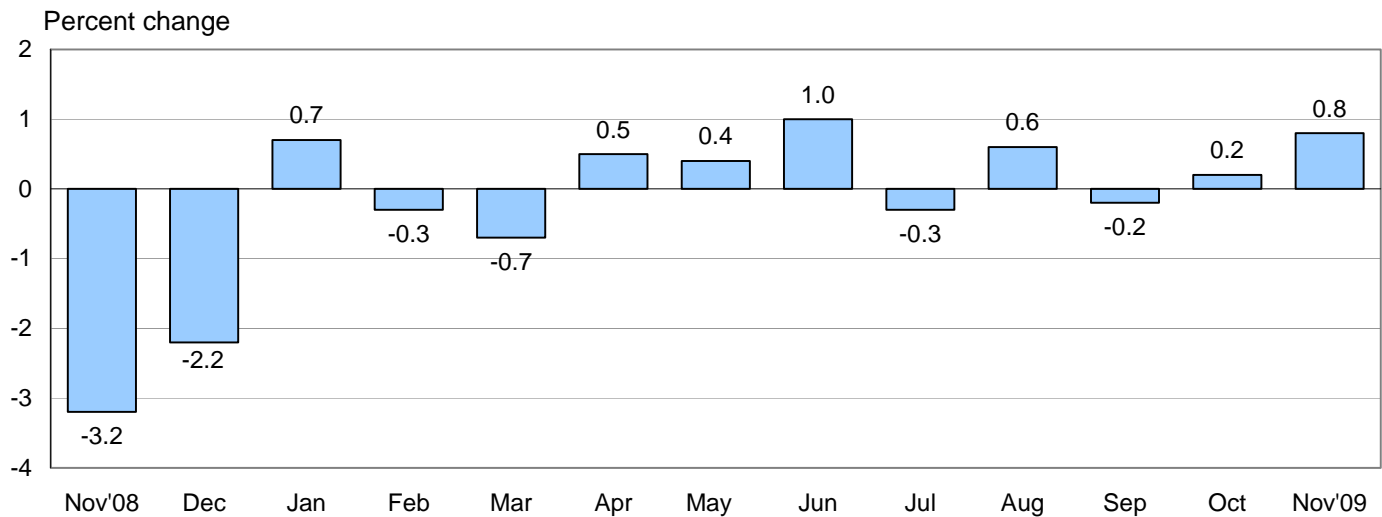
**All Imports Excluding Fuel:** Nonfuel import prices rose 0.4 percent in November as higher prices for nonfuel industrial supplies and materials, capital goods, and foods, feeds, and beverages contributed to the advance. Prices for nonfuel imports rose between 0.4 percent and 0.5 percent in each of the past four months. The index declined 1.0 percent over the past 12 months as decreases from November 2008 to March 2009 more than offset the recent increases.

**Table A. Percent changes**

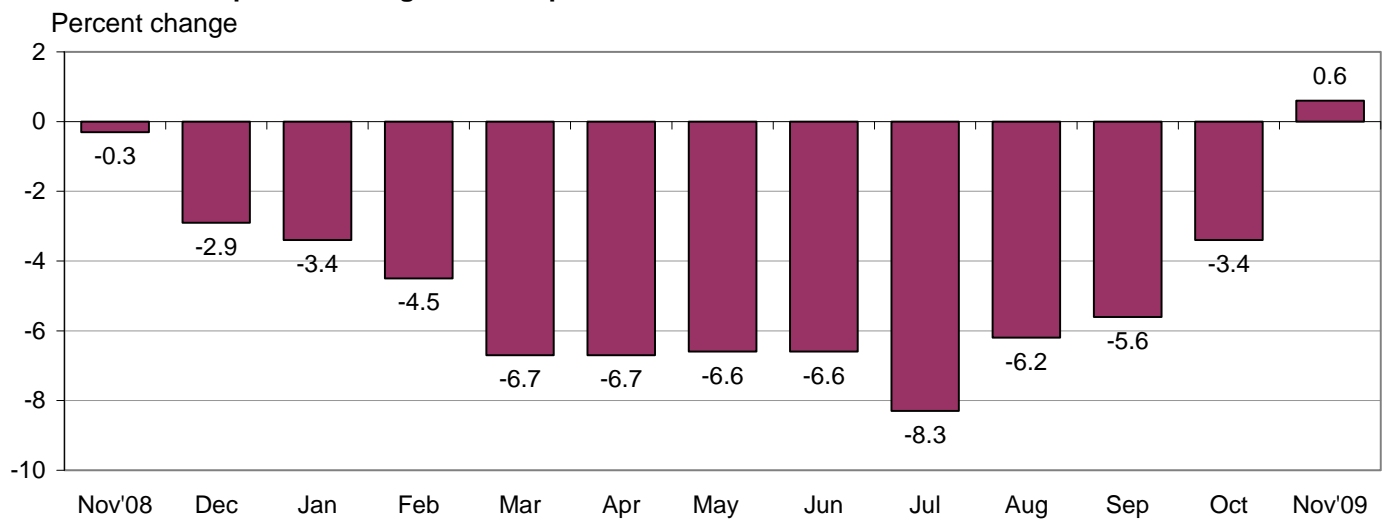
Month	IMPORTS			EXPORTS		
	All imports	Fuel imports	Nonfuel imports	All exports	Agricultural exports	Non-agricultural exports
<b>2008</b>						
November.....	-7.4	-27.8	-1.7	-3.2	-6.9	-2.8
December.....	-4.6	-22.2	-1.1	-2.2	-6.1	-1.9
<b>2009</b>						
January.....	-1.3	-4.7	-0.7	0.7	5.9	0.3
February.....	0.0	2.7	-0.4	-0.3	-1.7	-0.2
March.....	0.5	7.8	-0.6	-0.7	-3.4	-0.4
April.....	1.1	7.5	0.1	0.5	3.7	0.2
May.....	1.7	9.8	0.2	0.4	3.6	0.3
June.....	2.7	16.0	0.2	1.0	4.2	0.6
July.....	-0.6	-2.6	-0.2	-0.3	-4.9	0.1
August.....	1.5	7.0 <sup>r</sup>	0.4	0.6	0.2	0.7
September.....	0.2	-1.3 <sup>r</sup>	0.5	-0.2	-2.9 <sup>r</sup>	0.1
October.....	0.8 <sup>r</sup>	2.5 <sup>r</sup>	0.4	0.2 <sup>r</sup>	-0.7 <sup>r</sup>	0.2 <sup>r</sup>
November.....	1.7	7.3	0.4	0.8	3.7	0.7
Nov. 2007 to 2008.....	-5.9	-32.9	2.6	-0.3	-2.7	0.0
Nov. 2008 to 2009.....	3.7	27.0	-1.0	0.6	0.6	0.6

r Revised

**Chart 3. One-month percent change in the Export Price Index: November 2008 – November 2009**



**Chart 4. 12-month percent change in the Export Price Index: November 2008 – November 2009**



**All Exports:** Export prices advanced 0.8 percent in November after rising 0.2 percent in October. Higher nonagricultural prices accounted for approximately two thirds of the increase. Prices for overall exports rose 0.6 percent over the past year, the first time the index increased over a 12-month period since a 4.0 percent advance for the October 2007-2008 period.

**Agricultural Exports:** Agricultural prices rose 3.7 percent in November after declining 0.7 percent and 2.9 percent in October and September, respectively. Higher prices for soybeans, corn, and wheat led the upturn in agricultural prices. The November increase led the price index for overall agricultural prices up 0.6 percent over the past 12 months, the first year-over-year increase since a 6.0 percent advance for the year ended in October 2008.

**All Exports Excluding Agriculture:** Prices for nonagricultural exports increased for the eighth consecutive month, rising 0.7 percent in November. Higher prices for nonagricultural industrial supplies and materials and finished goods contributed to the advance. The index rose 0.6 percent over the past 12 months.

## SELECTED NOVEMBER HIGHLIGHTS

### Import Prices

**Nonfuel Industrial Supplies and Materials:** The price index for nonfuel industrial supplies and materials increased 1.4 percent in November after rising 1.6 percent the previous month. Rising prices for metals and chemicals were the largest contributors to the increases in both November and October.

**Finished Goods:** Finished goods prices were mixed in November. Prices for capital goods and automotive vehicles increased 0.2 percent and 0.1 percent, respectively. In contrast, consumer goods prices edged down 0.1 percent.

**Foods, Feeds, and Beverages:** Prices for foods, feeds, and beverages rose 0.5 percent in November, following increases of 0.3 percent in October and 0.5 percent in September.

**Imports by Locality of Origin:** Import prices from Canada rose 2.9 percent in November, led by higher fuel prices. The November increase followed advances of 1.1 percent in each of the previous two months. The price indexes for imports from the European Union and Mexico also rose in November, increasing 0.6 percent and 0.3 percent, respectively.

**Transportation Services:** Import air freight prices rose for the sixth consecutive month, increasing 1.0 percent in November. Import air passenger fares advanced 0.5 percent in November after rising 6.4 percent in October. The November increase was led by an 8.2 percent rise in Latin America/Caribbean fares.

### Export Prices

**Nonagricultural Industrial Supplies and Materials:** The price index for nonagricultural industrial supplies and materials increased 1.7 percent in November after rising 0.5 percent in October. The November advance was driven by higher prices for fuel, metals, and chemicals.

**Finished Goods:** Prices for capital goods and for consumer goods rose 0.3 percent and 0.2 percent, respectively. Higher prices for computers and semiconductors were the largest contributors to the increase in capital goods prices and rising prices for medicinal, dental, and pharmaceutical materials drove the rise in the price index for consumer goods. Prices for automotive vehicles were unchanged.

**Transportation Services:** Export air passenger fares fell 1.6 percent in November following an increase of 1.2 percent in October. Falling prices for Asian fares contributed to the November decline. In contrast, export air freight prices rose for the fourth time in five months, increasing 0.6 percent in November.

---

**Import and Export Price Index data for December 2009 are scheduled for release on Thursday, January 14, 2010 at 8:30 a.m. (EST).**

**Table 1. U.S. import price indexes and percent changes for selected categories of goods: November 2008 to November 2009**

[2000=100, unless otherwise noted]

Description	End Use	Relative importance Oct. 2009 <sup>1</sup>	Index		Percent change				
			Oct. 2009	Nov. 2009	Annual Nov. 2008 to Nov. 2009	Monthly			
						July 2009 to Aug. 2009	Aug. 2009 to Sept. 2009	Sept. 2009 to Oct. 2009	Oct. 2009 to Nov. 2009
<b>All commodities</b> .....		100.000	122.3	124.4	3.7	1.5	0.2	0.8	1.7
<b>All imports excluding petroleum</b> .....		82.083	108.5	109.3	-1.6	0.4	0.3	0.6	0.7
<b>All imports excluding fuels (Dec. 2001=100)</b> ..		80.784	112.4	112.8	-1.0	0.4	0.5	0.4	0.4
<b>Foods, feeds, &amp; beverages</b> .....	0	4.661	141.1	141.8	1.6	1.3	0.5	0.3	0.5
Agricultural foods, feeds & beverages, excluding distilled beverages.....	00	3.618	157.4	158.6	2.7	1.6	0.7	0.4	0.8
Nonagricultural foods (fish, distilled beverages).....	01	1.043	104.3	103.7	-2.0	0.3	-0.4	0.2	-0.6
<b>Industrial supplies &amp; materials</b> .....	1	33.358	187.0	195.9	12.2	4.6	0.3	2.2	4.8
Industrial supplies & materials excluding petroleum.....		15.441	137.8	142.1	-7.4	1.1	1.5	2.4	3.1
Industrial supplies & materials excluding fuels (Dec. 2001=100).....		14.142	154.4	156.5	-4.6	1.3	2.7	1.6	1.4
Industrial supplies & materials, durable.....		8.999	147.5	149.4	-1.2	1.8	3.4	1.2	1.3
Industrial supplies & materials nondurable excluding petroleum.....		5.143	126.2	133.3	-14.2	0.4	-1.2	4.1	5.6
Fuels & lubricants.....	10	19.216	234.2	251.2	27.0	7.0	-1.3	2.5	7.3
Petroleum & petroleum products.....	100	17.917	257.1	273.1	35.5	7.6	-0.6	2.0	6.2
Crude.....	10000	13.127	266.0	279.2	38.4	7.1	-0.5	3.2	5.0
Fuels, n.e.s.-coals & gas.....	101	1.122	104.8	130.6	-27.0	0.0	-11.9	13.8	24.6
Gas-natural.....	10110	0.922	89.7	116.6	-31.3	-0.1	-14.1	17.1	30.0
Paper & paper base stocks.....	11	0.670	100.2	102.1	-11.3	-0.7	0.5	1.3	1.9
Materials associated with nondurable supplies & materials.....	12	4.549	138.6	140.6	-9.3	0.8	1.4	2.5	1.4
Selected building materials.....	13	1.637	118.5	118.3	-0.4	1.0	-0.3	-0.3	-0.2
Unfinished metals related to durable goods.....	14	3.887	209.3	214.9	2.7	3.1	7.3	2.3	2.7
Finished metals related to durable goods. ...	15	1.863	137.9	138.9	-5.8	1.0	1.6	0.6	0.7
Nonmetals related to durable goods.....	16	1.536	104.9	105.0	-4.9	0.7	0.8	0.6	0.1
<b>Capital goods</b> .....	2	23.240	92.0	92.2	-0.8	0.0	0.0	0.1	0.2
Electric generating equipment.....	20	3.005	110.8	111.2	-0.5	0.1	0.0	0.5	0.4
Nonelectrical machinery.....	21	18.155	86.6	86.7	-1.1	0.0	0.0	0.1	0.1
Transportation equipment excluding motor vehicles (Dec. 2001=100).....	22	2.080	123.1	122.8	2.2	0.1	0.0	-0.1	-0.2
<b>Automotive vehicles, parts &amp; engines</b> .....	3	13.833	108.9	109.0	1.0	0.2	0.2	0.3	0.1
<b>Consumer goods, excluding automotives</b> ..	4	24.908	104.3	104.2	-0.4	0.0	0.0	0.2	-0.1
Nondurables, manufactured.....	40	11.456	107.8	107.7	-0.3	0.0	0.0	0.0	-0.1
Durables, manufactured.....	41	12.257	100.9	100.9	-0.2	0.0	0.1	0.2	0.0
Nonmanufactured consumer goods.....	42	1.196	101.6	101.1	-2.0	-0.5	0.4	0.4	-0.5

<sup>1</sup> Relative importance figures are based on 2007 trade values.

NOTES: Data may be revised in each of the three months after original publication.

Dash = Not available

**Table 2. U.S. export price indexes and percent changes for selected categories of goods: November 2008 to November 2009**

[2000=100, unless otherwise noted]

Description	End Use	Relative importance Oct. 2009 <sup>1</sup>	Index		Percent change				
			Oct. 2009	Nov. 2009	Annual Nov. 2008 to Nov. 2009	Monthly			
						July 2009 to Aug. 2009	Aug. 2009 to Sept. 2009	Sept. 2009 to Oct. 2009	Oct. 2009 to Nov. 2009
<b>All commodities</b> .....		100.000	118.1	119.1	0.6	0.6	-0.2	0.2	0.8
<b>Agricultural commodities</b> .....		8.479	155.8	161.5	0.6	0.2	-2.9	-0.7	3.7
<b>Nonagricultural commodities</b> .....		91.522	115.3	116.1	0.6	0.7	0.1	0.2	0.7
<b>Foods, feeds, &amp; beverages</b> .....	0	7.739	156.5	161.7	-1.9	-0.2	-3.8	-1.1	3.3
Agricultural foods, feeds & beverages, excluding distilled beverages.....	00	7.121	159.1	164.3	-1.6	-0.2	-3.9	-1.0	3.3
Nonagricultural foods (fish, distilled beverages).....	01	0.618	134.6	140.0	-5.6	-1.0	-2.4	-2.0	4.0
<b>Industrial supplies &amp; materials</b> .....	1	27.771	144.7	147.4	-0.5	2.1	0.2	0.6	1.9
Industrial supplies & materials, durable.....		11.044	152.1	153.9	3.1	2.0	1.8	1.0	1.2
Industrial supplies & materials, nondurable.....		16.727	140.9	144.1	-2.9	2.2	-0.7	0.2	2.3
Agricultural industrial supplies & materials.....	10	1.358	143.5	151.4	12.8	2.3	3.0	0.9	5.5
<b>Nonagricultural industrial supplies &amp; materials</b> .....		26.413	145.0	147.4	-1.2	2.1	0.1	0.5	1.7
Fuels & lubricants.....	11	3.860	174.9	185.2	-4.2	9.4	-5.3	1.7	5.9
Nonagricultural supplies & materials excluding fuels & building materials.....	12	21.537	143.2	144.6	-0.7	0.9	1.1	0.4	1.0
Selected building materials.....	13	1.016	112.6	113.0	-2.2	0.8	0.3	-1.2	0.4
<b>Capital goods</b> .....	2	41.286	103.6	103.9	2.3	0.2	0.1	0.1	0.3
Electrical generating equipment.....	20	3.742	108.0	108.2	-0.9	0.3	0.2	0.5	0.2
Nonelectrical machinery.....	21	28.619	95.0	95.5	2.1	0.2	0.2	0.1	0.5
Transportation equipment excluding motor vehicles (Dec. 2001=100).....	22	8.925	137.1	136.4	4.1	0.1	-0.2	-0.1	-0.5
<b>Automotive vehicles, parts &amp; engines</b> .....	3	10.321	108.1	108.1	0.0	0.0	0.1	0.1	0.0
<b>Consumer goods, excluding automotives</b> .....	4	12.884	109.2	109.4	0.3	0.2	0.1	0.0	0.2
Nondurables, manufactured.....	40	5.729	109.2	109.7	2.1	0.3	0.4	-0.2	0.5
Durables, manufactured.....	41	6.054	109.6	109.5	-0.3	0.1	-0.1	0.1	-0.1

<sup>1</sup> Relative importance figures are based on 2007 trade values.

NOTES: Data may be revised in each of the three months after original publication.

Dash = Not available

**Table 3. U.S. import price indexes and percent changes for selected categories of goods: November 2008 to November 2009**

[December 2005=100, unless otherwise noted]

Description	NAICS	Relative importance Oct. 2009 <sup>1</sup>	Index		Percent change				
			Oct. 2009	Nov. 2009	Annual	Monthly			
					Nov. 2008 to Nov. 2009	July 2009 to Aug. 2009	Aug. 2009 to Sept. 2009	Sept. 2009 to Oct. 2009	Oct. 2009 to Nov. 2009
<b>Nonmanufactured articles.....</b>		16.541	116.8	123.9	24.6	5.6	-0.7	3.5	6.1
<b>Agriculture, forestry, fishing and hunting...</b>	11	1.697	132.7	133.2	6.1	2.0	1.2	-0.1	0.4
Crop production.....	111	1.216	139.7	140.0	8.7	1.9	1.4	-0.1	0.2
<b>Mining.....</b>	21	14.844	115.0	122.8	27.1	6.0	-0.9	3.9	6.8
Mining (except oil and gas) (Dec. 2006=100).....	212	0.449	131.5	131.7	2.1	0.9	0.8	1.4	0.2
<b>Manufactured articles.....</b>		82.904	108.1	108.9	0.1	0.7	0.3	0.3	0.7
<b>Manufactured goods, part 1.....</b>	31	10.296	107.3	107.6	-0.1	0.3	0.1	0.3	0.3
Food manufacturing.....	311	2.437	118.7	119.9	-1.2	1.0	0.4	0.8	1.0
Beverage and tobacco product manufacturing.....	312	0.929	107.7	108.2	2.3	0.0	0.1	0.3	0.5
Textile mills.....	313	0.448	113.7	113.9	1.7	0.3	-0.2	1.1	0.2
Textile product mills.....	314	0.799	100.4	100.3	-1.8	0.0	0.0	1.0	-0.1
Apparel manufacturing.....	315	4.138	101.8	101.7	-0.2	0.0	-0.1	-0.1	-0.1
Leather and allied product manufacturing. . .	316	1.546	107.2	107.1	0.7	0.1	0.0	0.0	-0.1
<b>Manufactured goods, part 2.....</b>	32	17.790	115.4	118.2	2.0	2.5	-0.3	0.2	2.4
Wood product manufacturing.....	321	0.991	94.0	93.7	0.0	1.6	-0.5	-0.3	-0.3
Paper manufacturing.....	322	1.195	99.2	100.3	-9.9	-0.7	0.6	0.3	1.1
Petroleum and coal products manufacturing.....	324	4.007	114.8	125.1	23.5	10.7	-2.8	-1.5	9.0
Chemical manufacturing.....	325	8.520	120.8	121.6	-4.3	0.3	0.6	1.2	0.7
Plastics and rubber products manufacturing.....	326	1.826	112.0	112.5	-0.7	0.2	-0.1	0.0	0.4
Nonmetallic mineral product manufacturing.....	327	1.143	119.3	119.2	1.0	-0.2	0.0	-0.3	-0.1
<b>Manufactured goods, part 3.....</b>	33	54.818	105.9	106.2	-0.6	0.3	0.6	0.3	0.3
Primary metal manufacturing.....	331	4.382	137.8	141.5	-3.0	2.6	6.0	1.5	2.7
Fabricated metal product manufacturing. . .	332	2.773	116.3	116.3	-3.6	-0.1	-0.1	0.5	0.0
Machinery manufacturing.....	333	6.888	113.0	113.0	2.3	0.2	0.2	0.5	0.0
Computer and electronic product manufacturing.....	334	14.998	89.1	89.1	-2.4	0.0	0.0	0.1	0.0
Electrical equipment, appliance, and component manufacturing.....	335	3.987	112.8	113.0	-1.0	0.0	0.1	0.2	0.2
Transportation equipment manufacturing. . .	336	15.027	106.3	106.4	1.4	0.3	0.1	0.3	0.1
Furniture and related product manufacturing.....	337	1.549	108.7	108.4	-1.6	-0.2	0.5	-0.5	-0.3
Miscellaneous manufacturing.....	339	5.214	112.2	112.6	2.0	-0.1	0.1	0.3	0.4

<sup>1</sup> Relative importance figures are based on 2007 trade values.

NOTES: Data may be revised in each of the three months after original publication.

Dash = Not available

**Table 4. U.S. export price indexes and percent changes for selected categories of goods: November 2008 to November 2009**

[December 2005=100, unless otherwise noted]

Description	NAICS	Relative importance Oct. 2009 <sup>1</sup>	Index		Percent change				
			Oct. 2009	Nov. 2009	Annual	Monthly			
					Nov. 2008 to Nov. 2009	July 2009 to Aug. 2009	Aug. 2009 to Sept. 2009	Sept. 2009 to Oct. 2009	Oct. 2009 to Nov. 2009
<b>Nonmanufactured articles.....</b>		6.004	118.9	123.3	0.6	1.2	-5.0	3.4	3.7
<b>Agriculture, forestry, fishing and hunting...</b>	11	4.542	132.0	140.0	0.9	0.4	-6.5	0.5	6.1
Crop production.....	111	4.202	135.6	144.2	1.1	0.1	-6.9	0.7	6.3
<b>Mining.....</b>	21	1.462	89.4	86.0	-0.3	4.4	0.5	13.6	-3.8
Mining (except oil and gas).....	212	0.992	91.1	89.7	-2.1	2.3	1.9	0.9	-1.5
<b>Manufactured articles.....</b>		92.025	109.0	109.7	0.5	0.5	0.1	0.0	0.6
<b>Manufactured goods, part 1.....</b>	31	6.586	120.7	121.4	0.8	-0.1	0.9	-0.7	0.6
Food manufacturing.....	311	4.416	135.0	135.9	1.5	-0.2	1.1	-1.2	0.7
Beverage and tobacco product manufacturing.....	312	0.521	108.0	108.1	4.5	0.1	0.0	0.9	0.1
Apparel manufacturing.....	315	0.389	102.8	102.8	1.3	0.0	0.1	0.1	0.0
<b>Manufactured goods, part 2.....</b>	32	21.760	110.4	112.0	-2.5	1.5	-0.5	-0.6	1.4
Wood product manufacturing.....	321	0.460	107.5	107.9	-2.8	1.2	0.6	0.6	0.4
Paper manufacturing.....	322	1.888	110.8	111.0	-4.1	-0.1	0.5	0.9	0.2
Petroleum and coal products manufacturing.....	324	2.269	102.8	112.6	-5.9	13.5	-7.0	0.7	9.5
Chemical manufacturing.....	325	14.152	112.7	113.5	-1.8	0.3	0.2	-1.1	0.7
Plastics and rubber products manufacturing.....	326	2.142	107.0	107.3	-3.0	-0.1	0.0	-0.7	0.3
Nonmetallic mineral product manufacturing.....	327	0.849	111.7	111.9	0.0	0.1	0.5	-0.2	0.2
<b>Manufactured goods, part 3.....</b>	33	63.679	107.2	107.6	1.7	0.2	0.2	0.3	0.4
Primary metal manufacturing.....	331	4.463	129.0	132.5	4.9	1.2	2.8	3.0	2.7
Fabricated metal product manufacturing. ....	332	2.826	121.3	121.4	2.3	0.3	0.2	-0.3	0.1
Machinery manufacturing.....	333	12.758	112.9	112.9	1.3	0.0	0.1	0.3	0.0
Computer and electronic product manufacturing.....	334	16.535	94.1	94.9	1.9	0.2	0.2	0.2	0.9
Electrical equipment, appliance, and component manufacturing.....	335	3.589	107.0	107.2	0.1	0.1	0.0	-0.3	0.2
Transportation equipment manufacturing....	336	18.221	110.3	110.0	2.0	0.0	-0.1	0.1	-0.3
Miscellaneous manufacturing.....	339	4.931	110.4	110.3	-1.2	0.0	0.1	-0.3	-0.1

<sup>1</sup> Relative importance figures are based on 2007 trade values.

NOTES: Data may be revised in each of the three months after original publication.

Dash = Not available



**Table 5. U.S. import price indexes and percent changes for selected categories of goods: November 2008 to November 2009**

[2000=100, unless otherwise noted]

Description	Harmoni- zied system	Relative importance Oct. 2009 <sup>1</sup>	Index		Percent change				
			Oct. 2009	Nov. 2009	Annual	Monthly			
					Nov. 2008 to Nov. 2009	July 2009 to Aug. 2009	Aug. 2009 to Sept. 2009	Sept. 2009 to Oct. 2009	Oct. 2009 to Nov. 2009
<b>Live animals; animal products.....</b>	I	1.154	133.9	134.9	3.8	0.7	1.0	1.7	0.7
Meat and edible meat offal.....	02	0.256	155.3	157.6	0.8	1.7	0.8	-1.3	1.5
Fish and crustaceans, molluscs and other aquatic invertebrates.....	03	0.557	100.7	100.3	-2.0	0.5	-0.5	1.5	-0.4
<b>Vegetable products.....</b>	II	1.414	158.2	156.6	4.2	1.9	1.3	-0.2	-1.0
Edible vegetables, roots, and tubers.....	07	0.424	294.5	287.3	21.0	-1.1	5.0	0.4	-2.4
Edible fruit and nuts; peel of citrus fruit or melons.....	08	0.420	101.8	95.5	-7.1	2.5	0.3	2.9	-6.2
Coffee, tea, mate and spices.....	09	0.259	157.1	160.9	9.2	10.1	-4.5	1.4	2.4
<b>Prepared foodstuffs, beverages, and tobacco.....</b>	IV	2.278	136.4	137.8	2.6	0.7	0.4	0.0	1.0
Preparations of cereals, flour, starch or milk; bakers' wares (Dec. 2007=100).....	19	0.244	110.7	112.0	3.0	0.3	0.9	-1.9	1.2
Preparations of vegetables, fruit, nuts, or other parts of plants.....	20	0.276	125.5	126.1	-6.8	0.4	-0.2	0.1	0.5
Beverages, spirits, and vinegar.....	22	0.934	117.0	118.1	3.0	0.0	0.3	0.3	0.9
<b>Mineral products.....</b>	V	19.379	236.5	253.2	26.7	6.8	-1.2	2.6	7.1
Mineral fuels, oils and residuals, bituminous substances and mineral waxes.....	27	18.996	233.3	250.1	27.0	6.9	-1.3	2.7	7.2
<b>Products of the chemical or allied industries.....</b>	VI	7.753	132.8	133.9	-5.0	0.5	0.5	1.4	0.8
Inorganic chemicals.....	28	0.862	244.0	250.1	-12.5	-3.9	10.6	12.8	2.5
Organic chemicals.....	29	2.441	126.4	128.2	0.6	1.7	-1.1	0.2	1.4
Pharmaceutical products.....	30	2.698	114.1	114.2	0.9	0.0	0.1	-0.1	0.1
Tanning & dyeing extracts; dye & pigments; varnish & paints; putty.....	32	0.171	105.5	105.4	0.1	0.0	2.0	-1.0	-0.1
Essential oils and resinoids (Dec. 2001=100).....	33	0.424	121.7	119.4	-2.3	0.2	0.4	0.6	-1.9
Miscellaneous chemical products.....	38	0.419	90.0	90.4	-8.2	0.1	0.4	-0.1	0.4
<b>Plastics and articles thereof; rubber and articles thereof.....</b>	VII	2.892	127.9	128.6	-3.1	0.3	0.6	0.6	0.5
Plastics and articles thereof.....	39	1.869	124.5	125.0	-3.4	0.2	0.1	0.5	0.4
Rubber and articles thereof.....	40	1.023	134.4	135.7	-2.4	0.7	1.3	0.8	1.0
<b>Raw hides, skins, leather, furskins, travel goods, etc.....</b>	VIII	0.617	113.7	113.7	-0.3	0.2	0.3	0.0	0.0
Articles of leather; travel goods, bags, etc. of various materials.....	42	0.556	114.7	114.7	0.2	0.2	0.1	0.2	0.0
<b>Wood, wood charcoal, cork, straw, basketware and wickerwork.....</b>	IX	1.014	114.1	113.8	-0.6	1.6	-0.5	-0.6	-0.3
<b>Woodpulp, recovered paper, and paper products.....</b>	X	1.372	104.8	105.7	-8.0	-0.7	0.2	0.4	0.9
Paper and paperboard; articles of paper pulp, paper or paperboard.....	48	0.927	100.9	101.1	-11.4	-1.4	-0.3	-0.4	0.2
Printed matter.....	49	0.281	120.0	120.0	0.6	0.0	-0.1	0.0	0.0
<b>Textile and textile articles.....</b>	XI	5.222	103.2	103.1	-0.4	0.1	0.0	0.3	-0.1
Articles of apparel and clothing accessories, knitted or crocheted.....	61	1.962	99.6	99.4	-0.9	0.0	-0.1	0.0	-0.2
Articles of apparel and clothing accessories, not knitted or crocheted.....	62	1.984	102.6	102.6	0.1	-0.1	-0.1	-0.3	0.0
Made-up or worn textile articles.....	63	0.540	91.8	91.7	-3.9	0.0	0.0	1.2	-0.1
<b>Headgear, umbrellas, artificial flowers, etc..</b>	XII	1.258	107.5	107.5	0.7	0.1	-0.1	-0.1	0.0
Footwear and parts of such articles.....	64	1.060	106.5	106.5	0.6	0.1	-0.1	-0.2	0.0

See footnotes at end of table.

**Table 5. U.S. import price indexes and percent changes for selected categories of goods: November 2008 to November 2009 — Continued**  
 [2000=100, unless otherwise noted]

Description	Harmonized system	Relative importance Oct. 2009 <sup>1</sup>	Index		Percent change				
			Oct. 2009	Nov. 2009	Annual	Monthly			
					Nov. 2008 to Nov. 2009	July 2009 to Aug. 2009	Aug. 2009 to Sept. 2009	Sept. 2009 to Oct. 2009	Oct. 2009 to Nov. 2009
<b>Stone, plaster, cement, asbestos, ceramics, glass etc.....</b>	XIII	1.021	124.6	124.5	1.5	-0.2	0.1	0.0	-0.1
Articles of stone, plaster, cement, asbestos, or mica (Dec. 2001=100).....	68	0.381	118.0	118.0	-0.8	-0.1	0.2	0.3	0.0
Ceramic products.....	69	0.323	139.5	139.6	5.8	0.0	0.0	0.1	0.1
Glass and glassware.....	70	0.317	116.2	115.9	0.6	-0.6	0.1	-0.4	-0.3
<b>Pearls, stones, precious metals, imitation jewelry, and coins.....</b>	XIV	2.708	146.5	150.0	13.3	-0.1	1.4	3.0	2.4
<b>Base metals and articles of base metals.....</b>	XV	5.795	163.4	165.0	-6.9	1.8	4.0	0.7	1.0
Iron and steel.....	72	1.277	195.1	198.1	-22.3	3.4	4.0	1.5	1.5
Articles of iron or steel.....	73	1.733	138.1	138.4	-14.2	-0.9	0.4	1.3	0.2
Copper and articles thereof.....	74	0.690	295.1	302.3	40.3	7.1	11.1	1.1	2.4
Aluminum and articles thereof.....	76	0.777	121.1	123.0	-2.7	5.1	7.2	-1.8	1.6
Tools, implements, cutlery, spoons and forks, of base metal; parts thereof.....	82	0.386	116.8	116.7	-0.1	-0.2	0.0	-0.3	-0.1
Miscellaneous articles of base metal.....	83	0.461	128.0	127.5	-3.3	-1.2	0.0	-0.5	-0.4
<b>Machinery, electrical equipment, TV image and sound recorders, parts, etc.....</b>	XVI	25.752	87.4	87.5	-0.6	0.2	0.0	0.2	0.1
Machinery and mechanical appliances; parts thereof.....	84	12.957	88.4	88.4	0.2	0.1	0.0	0.0	0.0
Electrical machinery and equip, sound and TV recorders & reproducers, parts.....	85	12.795	86.4	86.5	-1.6	0.4	0.1	0.3	0.1
<b>Vehicles, aircraft, vessels and associated transport equipment.....</b>	XVII	12.778	110.4	110.6	1.2	0.2	0.2	0.2	0.2
Motor vehicles and their parts.....	87	11.597	109.4	109.5	1.2	0.1	0.2	0.3	0.1
Aircraft, spacecraft, and parts thereof (Dec. 2002=100).....	88	1.067	115.7	115.6	0.0	0.1	0.0	0.0	-0.1
<b>Optical, photo, measuring, medical &amp; musical instruments; &amp; timepieces.....</b>	XVIII	3.189	102.6	102.5	1.2	0.0	0.1	0.2	-0.1
Optical, photographic, measuring and medical instruments.....	90	2.861	100.2	100.1	0.9	0.0	0.1	0.1	-0.1
Clocks and watches and parts thereof.....	91	0.248	124.5	125.0	2.8	0.0	0.2	0.4	0.4
<b>Miscellaneous manufactured articles.....</b>	XX	4.192	107.5	107.4	0.2	0.0	0.0	-0.4	-0.1
Furniture & stuffed furnishings; lamps & lighting fittings, nesoi; prefab bldgs.....	94	2.278	111.7	111.5	-0.9	-0.1	0.3	-0.5	-0.2
Toys, games and sports equipment; parts and accessories thereof.....	95	1.702	101.2	101.1	1.4	0.2	-0.3	-0.2	-0.1
Miscellaneous manufactured articles.....	96	0.212	116.2	116.3	3.5	-0.1	0.0	0.2	0.1

<sup>1</sup> Relative importance figures are based on 2007 trade values.

NOTES: Data may be revised in each of the three months after original publication.

Dash = Not available

**Table 6. U.S. export price indexes and percent changes for selected categories of goods: November 2008 to November 2009**

[2000=100, unless otherwise noted]

Description	Harmonized system	Relative importance Oct. 2009 <sup>1</sup>	Index		Percent change				
			Oct. 2009	Nov. 2009	Annual	Monthly			
					Nov. 2008 to Nov. 2009	July 2009 to Aug. 2009	Aug. 2009 to Sept. 2009	Sept. 2009 to Oct. 2009	Oct. 2009 to Nov. 2009
<b>Live animals; animal products.....</b>	I	1.444	150.0	150.7	-6.5	-0.9	-1.6	-2.2	0.5
Meat & edible meat offal (Dec. 2006=100). . .	02	0.750	120.6	120.6	-3.7	-0.9	-2.1	-2.7	0.0
Fish and crustaceans, molluscs and other aquatic invertebrates.....	03	0.357	130.8	134.4	-12.6	-1.5	-3.2	-2.6	2.8
<b>Vegetable products.....</b>	II	4.328	175.7	184.2	-1.8	0.2	-5.8	-0.7	4.8
Edible fruit and nuts; peel of citrus fruit or melons.....	08	0.625	111.2	107.9	-1.6	3.2	1.3	3.5	-3.0
Cereals.....	10	1.701	172.1	187.2	-8.2	0.2	-8.4	2.3	8.8
Oilseeds and misc. grains, seeds, fruits, plants, straw and fodder.....	12	1.371	198.7	209.5	7.5	0.0	-7.5	-6.0	5.4
<b>Prepared foodstuffs, beverages, and tobacco.....</b>	IV	2.518	140.9	141.9	6.4	-0.1	0.6	0.1	0.7
Miscellaneous edible preparations.....	21	0.371	119.7	119.9	-1.5	-0.1	0.3	1.4	0.2
Beverages, spirits, and vinegar (Dec.2008=100).....	22	0.288	103.5	103.7	-	0.2	0.0	1.6	0.2
Residues and waste from the food industries; prepared animal feed.....	23	0.515	191.9	197.2	11.7	-2.6	0.0	-6.8	2.8
<b>Mineral products.....</b>	V	3.887	209.7	218.9	-6.6	10.3	-4.0	4.5	4.4
Mineral fuels, oils and residuals, bituminous substances and mineral waxes.....	27	3.340	202.4	213.9	-5.9	11.4	-5.2	4.9	5.7
<b>Products of the chemical or allied industries.....</b>	VI	11.572	134.6	135.7	-1.7	-0.1	-0.3	-1.1	0.8
Inorganic chemicals.....	28	1.106	167.6	167.8	-18.9	-0.9	-6.3	-5.4	0.1
Organic chemicals.....	29	3.270	138.3	142.1	1.8	0.6	0.1	-1.6	2.7
Pharmaceutical products.....	30	2.683	116.4	117.1	2.4	0.2	0.3	-0.1	0.6
Tanning or dyeing extracts, dyes, paints, varnish, putty, & inks.....	32	0.542	114.6	114.6	0.6	0.0	0.2	0.2	0.0
Essential oils and resinoids; perfumery cosmetic or toilet preparations.....	33	0.742	126.2	127.1	2.9	0.9	0.2	0.1	0.7
Soap; lubricants; waxes, polishing or scouring products; candles, pastes.....	34	0.408	114.6	115.2	-5.5	0.0	0.7	-1.3	0.5
Miscellaneous chemical products.....	38	1.819	133.1	133.4	1.9	-0.1	0.6	0.2	0.2
<b>Plastics and articles thereof; rubber and articles thereof.....</b>	VII	5.339	133.5	133.6	-5.5	0.5	0.9	-1.0	0.1
Plastics and articles thereof.....	39	4.315	127.8	127.8	-4.8	0.2	0.5	-1.2	0.0
Rubber and articles thereof.....	40	1.024	158.6	159.5	-8.1	1.8	2.6	-0.3	0.6
<b>Raw hides, skins, leather, furskins, travel goods, etc.....</b>	VIII	0.330	98.7	101.2	-8.3	8.8	5.0	0.4	2.5
<b>Wood, wood charcoal, cork, straw, basketware and wickerwork.....</b>	IX	0.567	103.1	103.5	-5.7	1.5	0.2	0.4	0.4
<b>Woodpulp, recovered paper, and paper products.....</b>	X	2.389	108.3	108.8	-1.1	0.5	0.5	0.4	0.5
Woodpulp and recovered paper.....	47	0.562	102.8	104.9	5.7	2.4	2.8	3.3	2.0
Paper and paperboard; articles of paper pulp, paper or paperboard.....	48	1.301	109.9	109.8	-4.0	-0.2	-0.5	0.3	-0.1
Printed material.....	49	0.527	115.3	115.6	-0.2	0.2	0.4	-2.0	0.3
<b>Textile and textile articles.....</b>	XI	2.022	105.5	109.2	4.6	-0.3	0.5	2.0	3.5
Cotton, including yarns and woven fabrics thereof.....	52	0.600	102.4	113.8	19.8	-0.6	1.3	6.6	11.1
<b>Stone, plaster, cement, asbestos, ceramics, glass etc. (Dec.2008=100).....</b>	XIII	0.829	114.6	114.6	0.6	0.0	0.0	0.2	0.0
Glass and glassware.....	70	0.433	97.6	97.6	-1.9	0.1	0.0	0.0	0.0
<b>Pearls, stones, precious metals, imitation jewelry, and coins.....</b>	XIV	4.033	181.9	186.8	12.7	0.0	1.7	2.8	2.7

See footnotes at end of table.

**Table 6. U.S. export price indexes and percent changes for selected categories of goods: November 2008 to November 2009 — Continued**  
 [2000=100, unless otherwise noted]

Description	Harmonized system	Relative importance Oct. 2009 <sup>1</sup>	Index		Percent change				
			Oct. 2009	Nov. 2009	Annual	Monthly			
					Nov. 2008 to Nov. 2009	July 2009 to Aug. 2009	Aug. 2009 to Sept. 2009	Sept. 2009 to Oct. 2009	Oct. 2009 to Nov. 2009
<b>Base metals and articles of base metals.....</b>	XV	5.299	152.1	153.3	-0.5	3.5	1.4	0.1	0.8
Iron and steel.....	72	1.385	174.9	175.6	-4.8	8.5	3.3	0.2	0.4
Articles of iron or steel.....	73	1.440	157.1	157.5	-1.3	0.1	-1.4	-0.4	0.3
Copper and articles thereof.....	74	0.530	195.2	203.8	13.2	7.6	4.0	0.5	4.4
Aluminum and articles thereof.....	76	0.771	112.4	113.5	4.3	4.1	4.2	-0.4	1.0
Tools, implements, cutlery, spoons and forks, of base metal; parts thereof.....	82	0.407	123.8	123.8	1.6	0.0	0.0	0.6	0.0
Miscellaneous articles of base metal.....	83	0.338	122.1	122.1	-5.4	-0.2	0.0	0.3	0.0
<b>Machinery, electrical equipment, TV image and sound recorders, parts, etc.....</b>	XVI	31.356	95.9	96.3	1.6	0.1	0.2	0.2	0.4
Machinery and mechanical appliances; parts thereof.....	84	18.083	106.0	106.6	2.0	0.1	0.2	0.3	0.6
Electrical machinery and equipment and parts and accessories thereof.....	85	13.273	84.9	85.2	1.1	0.1	0.1	0.1	0.4
<b>Vehicles, aircraft, vessels and associated transport equipment.....</b>	XVII	15.795	120.4	120.1	2.0	0.0	-0.2	0.1	-0.2
Motor vehicles and their parts.....	87	9.068	107.8	107.8	0.2	0.0	-0.1	0.3	0.0
<b>Optical, photo, measuring, medical &amp; musical instruments; &amp; timepieces.....</b>	XVIII	6.297	108.5	108.5	2.4	0.5	0.2	-0.1	0.0
<b>Miscellaneous manufactured articles.....</b>	XX	1.581	108.2	108.4	0.6	0.2	0.6	0.0	0.2
Furniture; stuffed furnishings; lamps and lighting fittings nesoi;.....	94	0.781	119.2	119.4	1.9	0.5	1.3	0.3	0.2
Toys, games and sports equipment; parts and accessories thereof.....	95	0.676	93.0	93.0	-0.9	-0.1	0.0	-0.3	0.0

<sup>1</sup> Relative importance figures are based on 2007 trade values.

NOTES: Data may be revised in each of the three months after original publication.

Dash = Not available

**Table 7. U.S. import price indexes and percent changes by locality of origin: November 2008 to November 2009**  
 [2000=100, unless otherwise noted]

Description	Percent of U.S. imports <sup>1</sup>	Index		Percent change				
		Oct. 2009	Nov. 2009	Annual	Monthly			
				Nov. 2008 to Nov. 2009	July 2009 to Aug. 2009	Aug. 2009 to Sept. 2009	Sept. 2009 to Oct. 2009	Oct. 2009 to Nov. 2009
<b>Industrialized Countries<sup>2</sup></b> .....	42.434	121.5	123.1	0.3	0.7	0.4	0.9	1.3
Nonmanufactured articles.....	4.390	179.0	197.6	7.8	1.0	-0.6	5.9	10.4
Manufactured articles.....	37.621	116.6	117.1	-0.5	0.7	0.4	0.4	0.4
<b>Other Countries<sup>3</sup></b> .....	57.566	120.9	122.6	4.5	2.1	0.2	0.4	1.4
Nonmanufactured articles.....	12.442	236.5	247.9	30.9	6.8	-0.7	2.3	4.8
Manufactured articles.....	44.910	104.6	105.0	-1.3	0.9	0.5	-0.2	0.4
<b>Canada</b> .....	15.963	132.6	136.5	0.5	1.2	1.1	1.1	2.9
Nonmanufactured articles.....	3.979	172.0	192.1	7.3	0.9	-0.7	6.4	11.7
Manufactured articles.....	11.678	125.5	126.0	-2.1	1.2	1.5	-0.3	0.4
<b>European Union<sup>4</sup></b> .....	17.447	126.3	127.0	0.6	0.2	0.6	0.6	0.6
Nonmanufactured articles.....	0.222	238.4	246.1	10.3	4.9	-2.0	1.3	3.2
Manufactured articles.....	17.133	123.9	124.6	0.6	0.2	0.6	0.6	0.6
<b>France (Dec. 2003=100)</b> .....	1.954	123.1	124.0	4.3	0.3	0.8	0.1	0.7
<b>Germany (Dec. 2003=100)</b> .....	4.735	111.0	111.5	2.2	0.5	0.4	0.8	0.5
<b>United Kingdom (Dec. 2003=100)</b> .....	2.660	122.8	123.6	1.6	0.6	0.2	0.8	0.7
<b>Latin America<sup>5</sup></b> .....	17.808	151.8	153.9	6.7	2.6	0.7	1.7	1.4
Nonmanufactured articles.....	5.160	263.7	273.2	39.7	6.6	-0.8	2.6	3.6
Manufactured articles.....	12.547	129.0	129.4	-4.6	1.0	1.4	1.1	0.3
<b>Mexico (Dec. 2003=100)</b> .....	10.785	135.0	135.4	5.0	1.7	0.5	0.9	0.3
Nonmanufactured articles (Dec. 2008=100).....	1.947	140.5	143.7	-	7.1	0.1	3.4	2.3
Manufactured articles (Dec. 2008=100)....	8.788	96.5	96.2	-	0.1	0.7	0.1	-0.3
<b>Pacific Rim (Dec. 2003=100)<sup>6</sup></b> .....	33.590	99.8	99.9	-1.8	0.4	0.1	-0.1	0.1
<b>China (Dec. 2003=100)</b> .....	16.852	100.4	100.4	-2.4	0.3	-0.1	-0.1	0.0
<b>Japan</b> .....	7.488	97.5	97.5	1.9	0.1	0.1	0.3	0.0
<b>Asian NICs<sup>7</sup></b> .....	5.647	85.9	85.9	-6.6	0.5	0.2	-0.2	0.0
<b>ASEAN (Dec. 2003=100)<sup>8</sup></b> .....	5.729	96.6	96.9	-1.7	0.4	-0.1	-0.5	0.3
<b>Asia Near East (Dec. 2003=100)<sup>9</sup></b> .....	3.992	197.5	204.6	21.4	5.6	0.1	2.4	3.6

1 Percentage of trade figures are based on 2007 trade values.

2 Includes Western Europe, Canada, Japan, Australia, New Zealand and South Africa.

3 Includes Eastern Europe, Latin America, OPEC countries, and other countries in Asia, Africa and the Western Hemisphere.

4 Includes European Union countries.

5 Includes Mexico, Central America, South America and the Caribbean.

6 Includes China, Japan, Australia, Brunei, Indonesia, Macao, Malaysia, New Zealand, Papua New Guinea, Philippines and Asian Newly Industrialized Countries.

7 Asian Newly Industrialized Countries. Includes Hong Kong, Singapore, South Korea and Taiwan.

8 Association of Southeast Asian Nations. Includes Brunei, Cambodia, Indonesia, Laos, Malaysia, Myanmar, Philippines, Singapore, Thailand and Vietnam.

9 Includes Bahrain, Iran, Iraq, Israel, Jordan, Kuwait, Lebanon, Oman, Qatar, Saudi Arabia, Syria, United Arab Emirates and Yemen.

NOTES: Data may be revised in each of the three months after original publication.

Regions are not mutually exclusive.

Dash = Not available

**Table 8. U.S. international price indexes and percent changes for selected transportation services: November 2008 to November 2009**

[2000=100, unless otherwise noted]

Description	Relative importance Oct. 2009 <sup>1</sup>	Index		Percent change				
		Oct. 2009	Nov. 2009	Annual	Monthly			
				Nov. 2008 to Nov. 2009	July 2009 to Aug. 2009	Aug. 2009 to Sept. 2009	Sept. 2009 to Oct. 2009	Oct. 2009 to Nov. 2009
<b>Air Freight</b>								
<b>Import Air Freight</b> .....	100.000	136.4	137.7	-5.4	0.1	0.7	1.5	1.0
Europe (Dec. 2003=100).....	23.489	135.9	137.8	-2.5	1.1	1.1	2.1	1.4
Asia.....	66.895	117.5	117.9	-6.3	-0.3	0.7	1.5	0.3
<b>Export Air Freight</b> .....	100.000	121.3	122.0	-12.4	0.5	1.3	-0.2	0.6
Europe (Dec. 2006=100).....	41.570	111.0	111.0	-14.7	0.0	2.5	0.0	0.0
<b>Inbound Air Freight</b> .....	100.000	129.3	133.0	-6.9	0.5	1.0	1.7	2.9
Europe (Dec. 2003=100).....	25.050	126.4	127.7	-9.6	0.6	1.1	1.4	1.0
Asia.....	63.228	112.5	116.9	-4.2	0.6	1.4	2.1	3.9
<b>Outbound Air Freight</b> .....	100.000	112.2	113.0	-18.5	-1.2	0.8	0.3	0.7
Europe (Dec. 2003=100).....	40.013	129.4	129.8	-17.8	0.3	1.1	0.0	0.3
Asia.....	41.331	102.7	103.6	-16.5	-0.1	0.6	-0.1	0.9
<b>Air Passenger Fares</b>								
<b>Import Air Passenger Fares</b> .....	100.000	146.7	147.5	-6.4	-2.2	-1.1	6.4	0.5
Europe.....	45.511	159.6	159.6	-2.5	-5.3	2.8	8.6	0.0
Asia.....	27.495	129.5	126.5	-8.5	-4.0	-4.3	4.1	-2.3
Latin America/Caribbean.....	11.165	120.3	130.2	0.6	4.5	-8.3	2.3	8.2
<b>Export Air Passenger Fares</b> .....	100.000	143.0	140.7	-11.9	9.1	-9.1	1.2	-1.6
Europe.....	31.796	170.7	172.2	-11.0	-0.3	-10.1	2.3	0.9
Asia.....	34.852	123.6	114.7	-15.8	22.7	-11.4	1.1	-7.2
Latin America/Caribbean.....	20.269	142.7	147.9	-9.8	3.9	-7.3	-1.0	3.6

<sup>1</sup> Relative importance figures are based on 2007 trade values.

NOTES: Data may be revised in each of the three months after original publication.

Dash = Not available

## TECHNICAL NOTE

**Import and Export Merchandise and Services Price Indexes** -- All indexes use a modified Laspeyres formula and are not seasonally adjusted. Price indexes are reweighted annually, with a two-year lag in the weights. Published series use a base year of 2000=100 where possible. More detailed index series and additional information may be obtained at <http://www.bls.gov/mxp>, or by calling (202) 691-7101.

**Merchandise Goods Classification Systems** -- The merchandise price indexes are published using three classification systems. Items are classified by end use according to the Bureau of Economic Analysis Classification System, by industry according to the North American Industry Classification System (NAICS), and by product category according to the Harmonized System (HS). While classification by end use and product category are self-explanatory, some notes are in order for classifying items by industry. In the NAICS imports and exports tables, items are classified by output industry, not input industry. As an example, NAICS import index 326 (plastics and rubber products manufacturing) include outputs such as manufactured plastic rather than inputs such as petroleum. The NAICS classification structure also matches the classification system used by the PPI (Producer Price Index) to produce the NAICS primary products indexes.

**Import Price Indexes** -- Products have been classified by the Harmonized Tariff Schedule of the United States Annotated (TSUSA). Import prices are based on U.S. dollar prices paid by the U.S. importer. The prices are generally either "free on board" (f.o.b.) foreign port or "cost, insurance, and freight" (c.i.f.) U.S. port transaction prices, depending on the practices of the individual industry. The index for crude petroleum is calculated from data collected by the U.S. Department of Energy.

**Export Price Indexes** -- Products have been classified by the Harmonized Schedule B classification system of the U.S. Bureau of the Census. The prices used are generally either "free alongside ship" (f.a.s.) factory or "free on board" (f.o.b.) transaction prices, depending on the practices of the individual industry. Prices used in the grain index, excluding rice, are obtained from the U.S. Department of Agriculture.

**Services Price Indexes** -- Starting in September 2008 the Import Air Passenger Fares Indexes represent changes in the average revenue per passenger received by foreign carriers from U.S. residents and are calculated from data obtained from an airline consulting service. These data include tickets sold by travel agencies and travel websites. Tickets sold directly by the airlines are excluded, as are frequent flyer tickets generally. Starting in January 2008 the Export Air Passenger Fares Indexes represent changes in the average revenue per passenger received by U.S. carriers from foreign residents and are calculated from data collected directly from airlines. These data include frequent flyer tickets and those sold by consolidators. Taxes and fees are included in the Import Air Passenger Fares Index and excluded from the Export Air Passenger Fares Index. The Air Freight Indexes are calculated from data collected directly from airlines. These data exclude mail and passenger baggage. The scope of the service being priced is the movement of freight from airport to airport only, and does not include any ground transportation or port service. The Air Freight Indexes are presented using two definitions: Balance of Payments (which represent transactions between U.S. and foreign residents) and International (which represent transactions inbound to and outbound from the U.S.). Fact sheets specifying detailed information for each services industry are available at <http://www.bls.gov/mxp> under "MXP Publications."

**Import Indexes by Locality of Origin** -- Prices used in these indexes are a subset of the data collected for the Import Price Indexes. Beginning with January 2002, the indexes are defined by locality of origin using a nomenclature based upon the North American Industry Classification System (NAICS). Nonmanufactured goods are defined as NAICS 11 and 21 and manufactured goods are defined as NAICS 31-33.

**Revision Policy** -- To reflect the availability of late reports and corrections by respondents, monthly data may be revised in each of the three months after original publication. After three months, no further data revisions take place. So, for example, data released in the January release will be subject to revision in the releases for February, March, and April.

**Uses of the Data** -- The primary use of the indexes is to deflate trade statistics, notably the foreign trade sector of the National Income and Product Accounts constructed by the Department of Commerce. Other published indexes are useful for general market analysis. For trade in international services, Balance of Payments indexes are used for deflating National Income and Product Accounts, while International indexes are more appropriate for market analysis. Merchandise and services indexes also can be used to study U.S. competitiveness and to compute price elasticities, and the merchandise import indexes by country or region of origin are useful in terms of trade analysis.

**E-Mail Subscription** -- The U.S. Import and Export Price Indexes news release is available through an e-mail subscription service at (<http://www.bls.gov/bls/list.htm>).

**Additional Information** -- More detailed data are available on the Import/Export Price Indexes home page at (<http://www.bls.gov/mxp>). Flat Files and the FTP server are available for users requiring access to either a large volume of time series data or other related documentation. The FTP site can be accessed at <ftp://ftp.bls.gov>. For technical assistance in using the BLS Internet site, send e-mail to ([labstat.helpdesk@bls.gov](mailto:labstat.helpdesk@bls.gov)). For Import/Export Price Index data requests, send e-mail to ([mxpinfo@bls.gov](mailto:mxpinfo@bls.gov)).

Information from this release will be made available to sensory impaired individuals upon request. Voice phone: 202-691-5200; Federal Relay Service: 1-800-877-8339.