

Transmission of material in this release is embargoed until  
8:30 a.m. (EST) Wednesday, December 12, 2012

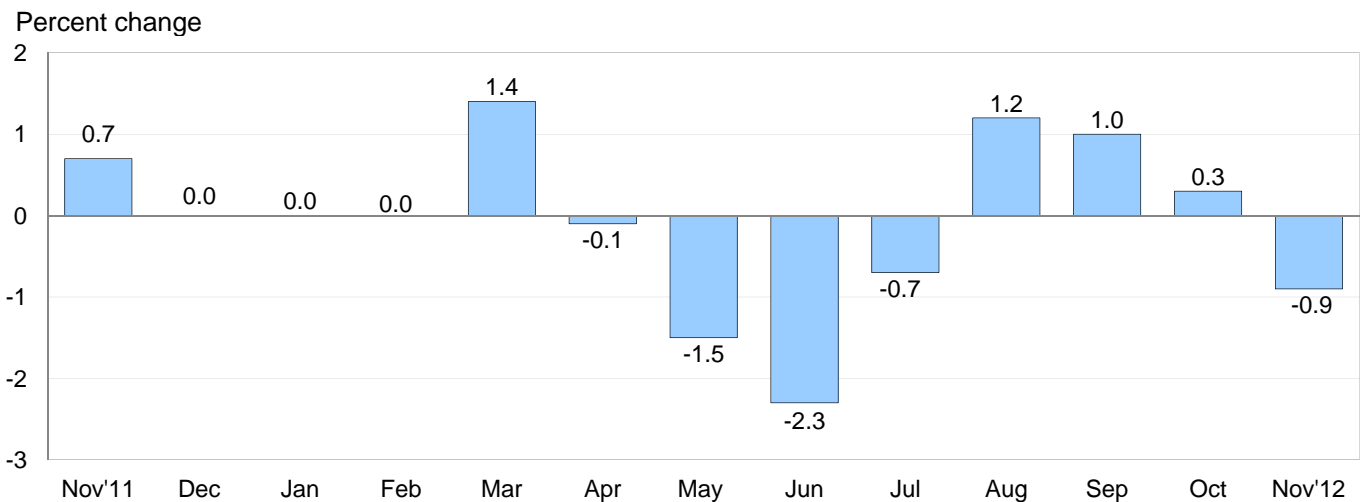
USDL-12-2406

Technical information: (202) 691-7101 • MXPinfo@bls.gov • www.bls.gov/mxp  
Media contact: (202) 691-5902 • PressOffice@bls.gov

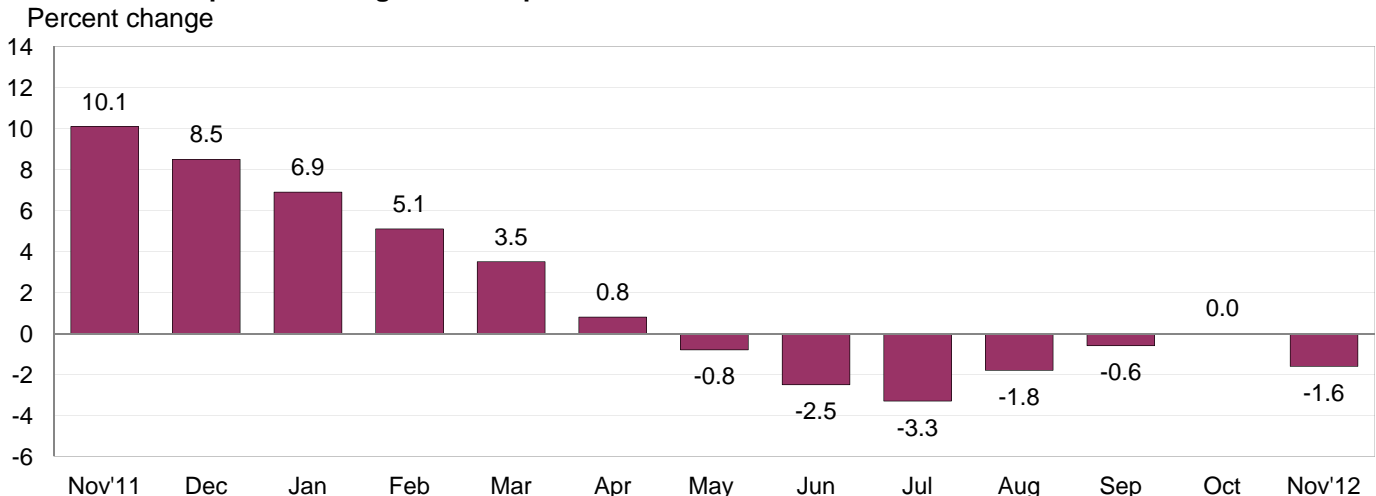
## U.S. IMPORT AND EXPORT PRICE INDEXES – NOVEMBER 2012

U.S. import prices decreased 0.9 percent in November, the U.S. Bureau of Labor Statistics reported today, following increases in each of the three previous months. The decline was primarily led by lower fuel prices. The price index for U.S. exports also fell in November, decreasing 0.7 percent after remaining unchanged in October.

**Chart 1. One-month percent change in the Import Price Index: November 2011 – November 2012**



**Chart 2. 12-month percent change in the Import Price Index: November 2011 – November 2012**



**All Imports:** Import prices fell for the first time since July after rising 2.5 percent over the previous three months. A 3.0 percent decline in fuel prices mainly drove the November decrease in import prices, although nonfuel prices also decreased for the month. The price index for overall imports fell 1.6 percent over the past 12 months, a contrast to the previous 12-month period ended in November 2011 when import prices rose 10.1 percent.

**Fuel Imports:** Import fuel prices fell 3.0 percent in November after edging down 0.1 percent the previous month. The November decline was the largest downturn since an 8.5 percent drop in June. A 3.6 percent decline in petroleum prices in November more than offset an 18.2 percent advance in natural gas prices. Fuel prices decreased 7.0 percent for the year ended in November following a 32.4 percent rise for the November 2010-11 period. Falling prices for both petroleum and natural gas over the past year, down 7.0 percent and 7.4 percent, respectively, each contributed to the 12-month drop in overall fuel prices.

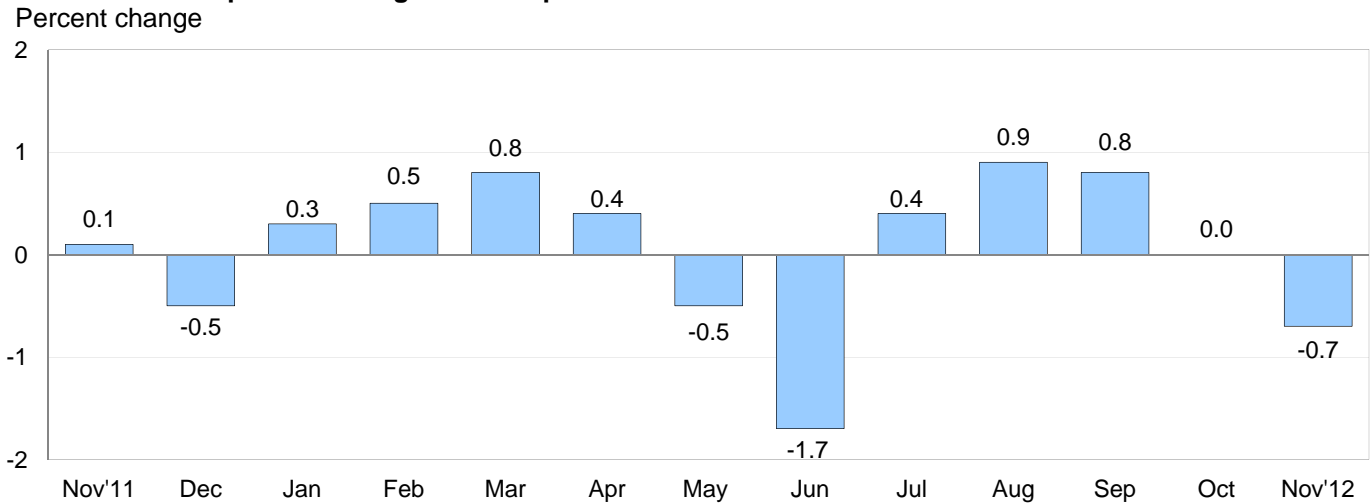
**All Imports Excluding Fuel:** The price index for nonfuel imports fell 0.2 percent in November after rising 0.4 percent in October and 0.2 percent in September. In November, most of the major finished goods categories contributed to the decline as prices for capital goods; foods, feeds, and beverages; nonfuel industrial supplies and materials; and consumer goods all fell. Despite the November decrease, prices for nonfuel imports rose 0.2 percent over the past year as higher finished goods prices more than offset lower prices for nonfuel industrial supplies and materials and foods, feeds, and beverages.

**Table A. Percent changes**

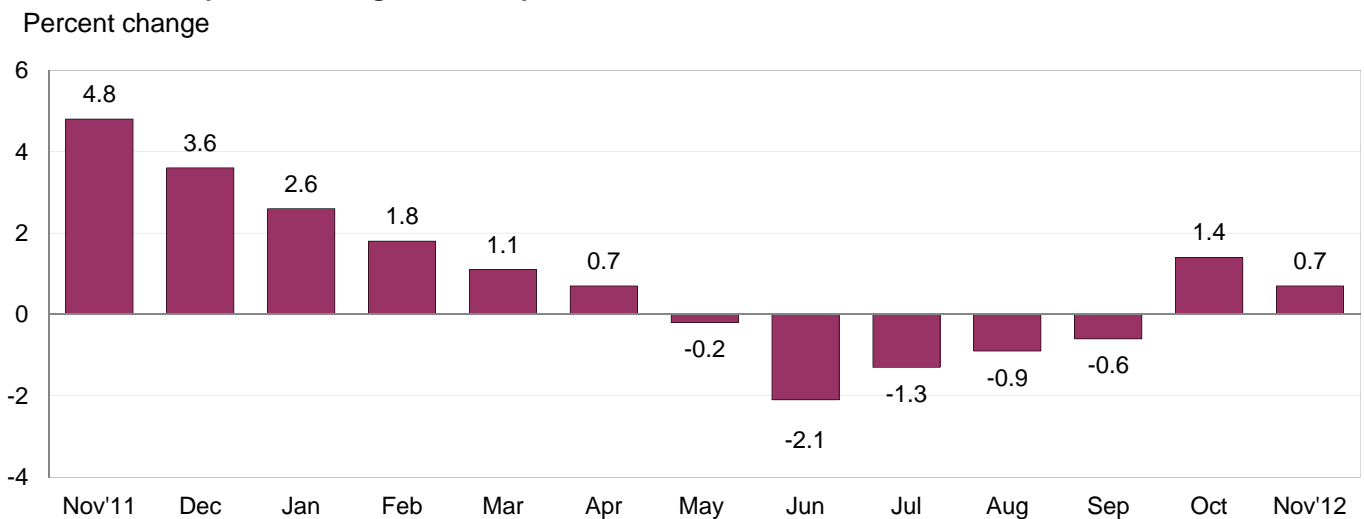
Month	IMPORTS			EXPORTS		
	All imports	Fuel imports	Nonfuel imports	All exports	Agricultural exports	Non-agricultural exports
<b>2011</b>						
November.....	0.7	3.4	-0.2	0.1	1.7	-0.2
December.....	0.0	-0.4	0.1	-0.5	-2.3	-0.2
<b>2012</b>						
January.....	0.0	-0.2	0.2	0.3	1.1	0.2
February.....	0.0	-0.1	0.0	0.5	-0.4	0.6
March.....	1.4	4.4	0.4	0.8	2.4	0.5
April.....	-0.1	-0.9	0.2	0.4	2.0	0.2
May.....	-1.5	-5.6	-0.1	-0.5	0.5	-0.6
June.....	-2.3	-8.5	-0.3	-1.7	-3.5	-1.5
July.....	-0.7	-2.0	-0.4	0.4	6.0	-0.2
August.....	1.2	6.1	-0.2	0.9	4.8 <sup>r</sup>	0.4
September.....	1.0 <sup>r</sup>	3.8 <sup>r</sup>	0.2	0.8	1.3 <sup>r</sup>	0.7
October.....	0.3 <sup>r</sup>	-0.1 <sup>r</sup>	0.4 <sup>r</sup>	0.0	-1.9	0.2
November.....	-0.9	-3.0	-0.2	-0.7	0.1	-0.7
Nov. 2010 to 2011.....	10.1	32.4	3.7	4.8	5.4	4.8
Nov. 2011 to 2012.....	-1.6	-7.0	0.2	0.7	10.0	-0.4

r Revised

**Chart 3. One-month percent change in the Export Price Index: November 2011 – November 2012**



**Chart 4. 12-month percent change in the Export Price Index: November 2011 – November 2012**



**All Exports:** Prices for overall exports decreased 0.7 percent in November after recording no change in October. The decline was driven by lower nonagricultural prices which more than offset a 0.1 percent uptick in agricultural prices. Despite the November decline, the price index for overall exports rose 0.7 percent over the past year.

**Agricultural Exports:** Agricultural prices advanced 0.1 percent in November, led by a 5.9 percent increase in fruit prices and a 2.4 percent rise in wheat prices. In contrast, prices for fish, corn, and soybeans all declined for the month. Prices for agricultural exports increased 10.0 percent over the past 12 months. That advance was driven by a 30.2 percent rise in soybeans prices, a 14.5 percent increase in corn prices, and a 19.8 percent advance in wheat prices.

**All Exports Excluding Agriculture:** The price index for nonagricultural exports declined 0.7 percent in November following increases over the three previous months. The November drop was led by lower prices for nonagricultural industrial supplies and materials and consumer goods. The decrease in November helped drive nonagricultural prices down 0.4 percent over the past 12 months.

## SELECTED NOVEMBER HIGHLIGHTS

### Import Prices

**Imports by Locality of Origin:** Prices for imports from China fell for the third consecutive month in November, edging down 0.1 percent following 0.2 percent declines in October and September. Import prices from China have not recorded a monthly advance since a 0.1 percent rise in February and decreased 0.7 percent over the past year. The index had previously increased 4.0 percent between November 2010 and November 2011. The price index for imports from Mexico also decreased in November falling 1.3 percent. In contrast, the price for imports from Canada ticked up 0.1 percent. Import prices from the European Union and Japan were unchanged in November.

**Nonfuel Industrial Supplies and Materials:** The price index for nonfuel industrial supplies and materials declined 0.4 percent in November after rising 1.2 percent the previous month. Both the November decrease and October advance were led by unfinished metals prices which fell 0.7 percent in November following a 4.5 percent increase the previous month.

**Finished Goods:** Finished goods prices were mostly down in November as capital goods prices decreased 0.3 percent and consumer goods edged down 0.1 percent. Prices for automotive vehicles were unchanged. The November drop in capital goods prices was driven by a 0.6 percent decline in the price index for computers, peripherals, and semiconductors.

**Foods, Feeds, and Beverages:** Prices for import foods, feeds, and beverages decreased 1.3 percent in November following a 0.2 percent rise in October. The November decline was driven by a 14.5 percent drop in coffee prices and a 5.9 percent decrease in vegetable prices.

**Transportation Services:** Import air passenger fares fell 0.9 percent in November after rising 2.0 percent the previous month. Lower Asian fares more than offset increasing European and Latin American/Caribbean fares. Despite the decline, import air passenger fares rose 2.9 percent for the year ended in November. Prices for import air freight advanced 0.5 percent in November but decreased 0.5 percent over the past 12 months.

### Export Prices

**Nonagricultural Industrial Supplies and Materials:** Nonagricultural industrial supplies and materials prices fell 2.0 percent in November following a 0.5 percent increase in October. The November drop was driven by a 6.0 percent decrease in export fuel prices.

**Finished Goods:** Finished goods prices were mixed in November; capital goods prices rose 0.2 percent, consumer goods prices fell 0.2 percent, and the price index for automotive vehicles remained unchanged. The increase in capital goods prices was led by a 3.3 percent advance in the price index for computer peripherals.

**Transportation Services:** Export air passenger fares rose 0.4 percent in November, led by higher Latin American/Caribbean and European fares. The index for export air passenger fares advanced 0.9 percent for the November 2011-12 period. Export air freight prices declined 0.3 percent in November.

---

**Import and Export Price Index data for December 2012 are scheduled for release on Friday, January 11, 2013 at 8:30 a.m. (EST).**

**Table 1. U.S. import price indexes and percent changes for selected categories of goods: November 2011 to November 2012**

[2000=100, unless otherwise noted]

Description	End Use	Relative importance Oct. 2012 <sup>1</sup>	Index		Percent change				
			Oct. 2012	Nov. 2012	Annual Nov. 2011 to Nov. 2012	Monthly			
						July 2012 to Aug. 2012	Aug. 2012 to Sept. 2012	Sept. 2012 to Oct. 2012	Oct. 2012 to Nov. 2012
<b>All commodities</b> .....		100.000	141.2	139.9	-1.6	1.2	1.0	0.3	-0.9
<b>All imports excluding food and fuels (Dec. 2010=100)</b> .....		71.266	103.6	103.5	0.3	-0.1	0.0	0.4	-0.1
<b>All imports excluding petroleum</b> .....		77.353	116.4	116.3	0.0	-0.1	0.1	0.4	-0.1
<b>All imports excluding fuels (Dec. 2001=100)</b> ..		76.359	120.8	120.5	0.2	-0.2	0.2	0.4	-0.2
<b>Foods, feeds, &amp; beverages</b> .....	0	5.093	171.9	169.6	-2.1	-0.5	1.4	0.2	-1.3
Agricultural foods, feeds & beverages, excluding distilled beverages.....	00	3.971	194.7	190.9	-2.1	-0.4	1.9	0.2	-2.0
Nonagricultural foods (fish, distilled beverages).....	01	1.122	120.3	121.6	-2.0	-0.7	-0.3	0.2	1.1
<b>Industrial supplies &amp; materials</b> .....	1	36.828	256.6	251.4	-4.9	3.7	2.4	0.4	-2.0
Industrial supplies & materials excluding petroleum.....		14.181	165.1	165.9	-1.6	-0.1	0.0	1.3	0.5
Industrial supplies & materials excluding fuels (Dec. 2001=100).....		13.187	189.2	188.5	-1.0	-0.3	0.0	1.2	-0.4
Industrial supplies & materials, durable.....		7.846	179.0	178.1	-1.0	-0.6	0.5	2.3	-0.5
Industrial supplies & materials nondurable excluding petroleum.....		5.341	149.1	151.4	-2.4	0.5	-0.6	0.0	1.5
Fuels & lubricants.....	10	23.641	342.8	332.5	-7.0	6.1	3.8	-0.1	-3.0
Petroleum & petroleum products.....	100	22.648	384.6	370.8	-7.0	6.2	4.0	-0.2	-3.6
Crude.....	10000	17.048	393.9	382.3	-6.2	6.4	4.2	-0.5	-2.9
Fuels, n.e.s.-coals & gas.....	101	0.713	96.9	111.6	-7.1	4.5	0.2	5.7	15.2
Gas-natural.....	10110	0.608	82.8	97.9	-7.4	5.3	-0.5	7.4	18.2
Paper & paper base stocks.....	11	0.583	112.3	112.2	-3.4	-0.7	-0.5	-0.3	-0.1
Materials associated with nondurable supplies & materials.....	12	4.847	175.0	174.6	-0.7	0.2	-0.7	-0.6	-0.2
Selected building materials.....	13	1.053	141.6	141.0	8.3	0.6	1.3	0.1	-0.4
Unfinished metals related to durable goods.....	14	3.662	268.1	266.2	-4.0	-1.2	0.6	4.5	-0.7
Finished metals related to durable goods. .	15	1.556	164.2	163.5	0.6	-0.2	0.2	1.4	-0.4
Nonmetals related to durable goods.....	16	1.486	114.2	114.4	-1.2	-0.1	-0.1	0.0	0.2
<b>Capital goods</b> .....	2	22.258	93.4	93.1	0.3	-0.1	0.2	0.0	-0.3
Electric generating equipment.....	20	2.900	119.8	119.9	1.2	0.1	0.3	0.2	0.1
Nonelectrical machinery.....	21	17.704	86.3	86.0	-0.1	-0.1	0.2	0.0	-0.3
Transportation equipment excluding motor vehicles (Dec. 2001=100).....	22	1.654	134.0	134.0	4.0	0.1	-0.1	0.1	0.0
<b>Automotive vehicles, parts &amp; engines</b> .....	3	11.647	115.1	115.1	1.6	0.1	0.2	0.3	0.0
<b>Consumer goods, excluding automotives</b> ..	4	24.174	107.7	107.6	0.3	-0.2	0.0	0.4	-0.1
Nondurables, manufactured.....	40	11.643	115.2	115.3	0.9	-0.1	-0.1	0.4	0.1
Durables, manufactured.....	41	11.267	100.0	99.7	-0.3	-0.1	0.0	0.5	-0.3
Nonmanufactured consumer goods.....	42	1.264	115.6	115.7	1.0	-2.5	0.1	0.1	0.1

<sup>1</sup> Relative importance figures are based on 2010 trade values.

NOTES: Data may be revised in each of the three months after original publication.

Dash = Not available

**Table 2. U.S. export price indexes and percent changes for selected categories of goods: November 2011 to November 2012**

[2000=100, unless otherwise noted]

Description	End Use	Relative importance Oct. 2012 <sup>1</sup>	Index		Percent change				
			Oct. 2012	Nov. 2012	Annual Nov. 2011 to Nov. 2012	Monthly			
						July 2012 to Aug. 2012	Aug. 2012 to Sept. 2012	Sept. 2012 to Oct. 2012	Oct. 2012 to Nov. 2012
<b>All commodities</b> .....		100.000	134.5	133.6	0.7	0.9	0.8	0.0	-0.7
<b>Agricultural commodities</b> .....		11.760	225.6	225.8	10.0	4.8	1.3	-1.9	0.1
<b>All exports excluding food and fuels (Dec. 2010=100)</b> .....		80.468	102.9	102.7	0.3	0.1	0.4	0.3	-0.2
<b>Nonagricultural commodities</b> .....		88.241	127.9	127.0	-0.4	0.4	0.7	0.2	-0.7
<b>Foods, feeds, &amp; beverages</b> .....	0	10.895	227.7	228.3	12.4	4.6	1.0	-1.7	0.3
Agricultural foods, feeds & beverages, excluding distilled beverages.....	00	10.166	231.5	232.7	13.1	4.8	1.2	-1.9	0.5
Nonagricultural foods (fish, distilled beverages).....	01	0.729	194.4	189.6	3.8	1.3	-0.3	0.7	-2.5
<b>Industrial supplies &amp; materials</b> .....	1	34.129	184.5	180.8	-2.7	1.4	1.9	0.4	-2.0
Industrial supplies & materials, durable.....		12.218	187.4	186.5	-0.4	-0.5	1.2	2.0	-0.5
Industrial supplies & materials, nondurable.....		21.913	183.7	178.5	-4.0	2.5	2.3	-0.4	-2.8
Agricultural industrial supplies & materials..	10	1.594	197.5	192.6	-6.9	4.3	2.0	-1.8	-2.5
<b>Nonagricultural industrial supplies &amp; materials</b> .....		32.536	184.2	180.6	-2.5	1.3	1.9	0.5	-2.0
Fuels & lubricants.....	11	8.638	270.4	254.3	-8.6	4.6	4.3	-0.9	-6.0
Nonagricultural supplies & materials excluding fuels & building materials.....	12	22.963	173.7	172.8	-0.3	0.2	1.1	1.2	-0.5
Selected building materials.....	13	0.935	117.8	117.8	1.3	0.2	0.1	-0.8	0.0
<b>Capital goods</b> .....	2	34.210	105.6	105.8	1.2	-0.1	0.1	0.0	0.2
Electrical generating equipment.....	20	3.522	114.1	114.0	1.0	0.1	0.3	0.2	-0.1
Nonelectrical machinery.....	21	24.760	94.8	95.0	0.8	-0.2	0.0	0.1	0.2
Transportation equipment excluding motor vehicles (Dec. 2001=100).....	22	5.927	149.2	149.2	2.8	0.0	0.0	0.0	0.0
<b>Automotive vehicles, parts &amp; engines</b> .....	3	8.118	112.4	112.4	0.4	-0.3	-0.2	-0.2	0.0
<b>Consumer goods, excluding automotives</b> ..	4	12.648	116.7	116.5	-0.2	0.0	0.3	0.0	-0.2
Nondurables, manufactured.....	40	5.914	115.8	115.7	1.8	0.2	0.3	0.4	-0.1
Durables, manufactured.....	41	5.315	114.3	113.9	0.5	0.0	0.3	-0.4	-0.3

<sup>1</sup> Relative importance figures are based on 2010 trade values.

NOTES: Data may be revised in each of the three months after original publication.

Dash = Not available

**Table 3. U.S. import price indexes and percent changes for selected categories of goods: November 2011 to November 2012**

[December 2005=100, unless otherwise noted]

Description	NAICS	Relative importance Oct. 2012 <sup>1</sup>	Index		Percent change				
			Oct. 2012	Nov. 2012	Annual Nov. 2011 to Nov. 2012	Monthly			
						July 2012 to Aug. 2012	Aug. 2012 to Sept. 2012	Sept. 2012 to Oct. 2012	Oct. 2012 to Nov. 2012
<b>Nonmanufactured articles.....</b>		20.273	167.6	164.1	-6.1	5.5	4.2	-0.1	-2.1
<b>Agriculture, forestry, fishing and hunting...</b>	11	1.859	174.3	165.4	-5.8	-0.7	2.7	1.0	-5.1
Crop production.....	111	1.336	183.1	171.0	-5.7	-0.3	3.5	1.0	-6.6
<b>Mining.....</b>	21	18.414	166.6	163.6	-6.1	6.2	4.3	-0.1	-1.8
Mining (except oil and gas) (Dec. 2006=100).....	212	0.319	140.2	139.0	-7.8	-0.1	0.8	-3.0	-0.9
<b>Manufactured articles.....</b>		79.267	118.1	117.4	-0.5	0.2	0.3	0.3	-0.6
<b>Manufactured goods, part 1.....</b>	31	10.716	123.4	123.4	-0.2	-0.2	-0.6	-0.2	0.0
Food manufacturing.....	311	2.917	153.6	153.6	-1.9	-0.4	-1.6	-0.9	0.0
Beverage and tobacco product manufacturing.....	312	0.844	112.0	112.1	0.1	0.0	0.4	0.2	0.1
Textile mills (Dec. 2011=100).....	313	0.405	102.3	102.3	-	0.2	0.5	-0.1	0.0
Textile product mills.....	314	0.867	115.7	115.8	-2.4	0.0	-0.2	0.1	0.1
Apparel manufacturing.....	315	4.038	110.8	111.0	-0.4	-0.4	-0.4	-0.2	0.2
Leather and allied product manufacturing. . .	316	1.645	120.8	120.8	3.8	0.4	0.0	0.1	0.0
<b>Manufactured goods, part 2.....</b>	32	18.053	140.1	137.3	-2.6	1.5	0.9	0.2	-2.0
Wood product manufacturing.....	321	0.642	120.1	120.3	12.3	1.0	1.0	0.2	0.2
Paper manufacturing.....	322	1.081	110.4	110.5	-1.7	-0.4	-0.2	-0.1	0.1
Petroleum and coal products manufacturing.....	324	4.768	175.4	162.3	-10.9	5.6	2.6	0.2	-7.5
Chemical manufacturing.....	325	8.750	134.9	135.0	0.0	0.3	0.2	0.4	0.1
Plastics and rubber products manufacturing.....	326	1.892	127.6	127.5	1.2	0.0	0.1	0.1	-0.1
Nonmetallic mineral product manufacturing.....	327	0.832	129.6	129.4	1.0	-0.1	0.2	-0.5	-0.2
<b>Manufactured goods, part 3.....</b>	33	50.498	110.2	109.9	0.2	-0.3	0.2	0.5	-0.3
Primary metal manufacturing.....	331	4.260	176.8	175.0	-3.4	-1.2	0.5	4.3	-1.0
Fabricated metal product manufacturing. . .	332	2.566	130.7	130.4	1.2	-0.2	0.5	0.4	-0.2
Machinery manufacturing.....	333	5.656	121.9	121.8	2.0	0.0	0.3	0.4	-0.1
Computer and electronic product manufacturing.....	334	15.411	82.2	81.7	-1.1	-0.1	0.1	-0.1	-0.6
Electrical equipment, appliance, and component manufacturing.....	335	3.849	118.9	119.5	2.0	0.1	-0.1	0.3	0.5
Transportation equipment manufacturing. . .	336	12.330	112.3	112.5	2.1	0.1	0.2	0.3	0.2
Furniture and related product manufacturing.....	337	1.311	113.8	113.8	0.7	-0.1	0.5	-0.3	0.0
Miscellaneous manufacturing.....	339	5.115	121.3	121.3	-1.1	-1.1	-0.1	0.3	0.0

<sup>1</sup> Relative importance figures are based on 2010 trade values.

NOTES: Data may be revised in each of the three months after original publication.

Dash = Not available

**Table 4. U.S. export price indexes and percent changes for selected categories of goods: November 2011 to November 2012**

[December 2005=100, unless otherwise noted]

Description	NAICS	Relative importance Oct. 2012 <sup>1</sup>	Index		Percent change				
			Oct. 2012	Nov. 2012	Annual Nov. 2011 to Nov. 2012	Monthly			
						July 2012 to Aug. 2012	Aug. 2012 to Sept. 2012	Sept. 2012 to Oct. 2012	Oct. 2012 to Nov. 2012
<b>Nonmanufactured articles.....</b>		8.693	174.9	175.2	3.0	5.0	0.8	-3.3	0.2
<b>Agriculture, forestry, fishing and hunting...</b>	11	6.895	217.9	217.3	12.8	6.1	1.5	-3.5	-0.3
Crop production.....	111	6.440	226.4	226.5	13.4	5.5	2.0	-3.8	0.0
<b>Mining.....</b>	21	1.798	91.7	93.4	-22.1	1.3	-2.0	-2.7	1.9
Mining (except oil and gas).....	212	1.223	108.8	107.3	-24.9	0.1	-1.5	-7.3	-1.4
<b>Manufactured articles.....</b>		88.399	121.7	120.8	0.6	0.5	0.8	0.2	-0.7
<b>Manufactured goods, part 1.....</b>	31	7.280	150.8	150.4	4.2	1.5	0.9	0.4	-0.3
Food manufacturing.....	311	5.092	173.1	172.8	5.2	1.6	1.1	0.6	-0.2
Beverage and tobacco product manufacturing.....	312	0.601	127.7	125.3	8.3	3.4	2.2	-0.5	-1.9
Apparel manufacturing.....	315	0.425	122.8	122.8	5.0	0.0	1.1	0.0	0.0
<b>Manufactured goods, part 2.....</b>	32	26.609	136.0	133.0	-0.4	1.8	2.1	0.1	-2.2
Wood product manufacturing.....	321	0.396	113.4	113.9	-0.2	0.5	0.0	-0.7	0.4
Paper manufacturing.....	322	1.825	119.6	119.1	-2.1	0.3	-0.1	0.0	-0.4
Petroleum and coal products manufacturing.....	324	6.520	177.3	163.6	-3.7	5.5	5.7	-0.1	-7.7
Chemical manufacturing.....	325	14.893	131.6	130.8	0.2	0.8	0.9	0.2	-0.6
Plastics and rubber products manufacturing.....	326	2.229	121.0	121.8	4.9	-0.1	2.6	0.6	0.7
Nonmetallic mineral product manufacturing.....	327	0.745	111.4	111.5	0.5	-0.4	0.0	-0.3	0.1
<b>Manufactured goods, part 3.....</b>	33	54.510	113.3	113.2	0.6	-0.2	0.2	0.4	-0.1
Primary metal manufacturing.....	331	4.857	175.5	173.5	-2.3	-1.3	1.8	3.9	-1.1
Fabricated metal product manufacturing. ....	332	2.648	132.1	132.1	2.6	0.2	0.1	0.3	0.0
Machinery manufacturing.....	333	11.039	121.0	121.2	2.9	0.2	0.1	0.1	0.2
Computer and electronic product manufacturing.....	334	14.137	89.0	89.1	-0.4	-0.3	-0.2	0.0	0.1
Electrical equipment, appliance, and component manufacturing.....	335	3.189	112.6	112.7	1.1	0.1	0.3	0.1	0.1
Transportation equipment manufacturing....	336	13.255	116.5	116.5	1.4	-0.2	-0.1	-0.1	0.0
Furniture and related product manufacturing (Dec. 2011=100).....	337	0.300	104.5	104.6	-	0.0	0.1	1.4	0.1
Miscellaneous manufacturing.....	339	5.086	121.8	121.9	-1.9	-0.1	0.6	-0.5	0.1

1 Relative importance figures are based on 2010 trade values.

NOTES: Data may be revised in each of the three months after original publication.

Dash = Not available



**Table 5. U.S. import price indexes and percent changes for selected categories of goods: November 2011 to November 2012**

[2000=100, unless otherwise noted]

Description	Harmonized system	Relative importance Oct. 2012 <sup>1</sup>	Index		Percent change				
			Oct. 2012	Nov. 2012	Annual	Monthly			
					Nov. 2011 to Nov. 2012	July 2012 to Aug. 2012	Aug. 2012 to Sept. 2012	Sept. 2012 to Oct. 2012	Oct. 2012 to Nov. 2012
<b>Live animals; animal products.....</b>	I	1.127	161.4	164.2	-1.5	-1.0	0.3	-0.2	1.7
Meat and edible meat offal.....	02	0.272	217.7	219.3	1.5	0.9	0.4	-0.8	0.7
Fish and crustaceans, molluscs and other aquatic invertebrates.....	03	0.567	112.5	114.8	-6.3	-1.6	-1.2	-0.1	2.0
<b>Vegetable products.....</b>	II	1.671	212.8	203.6	-2.0	-0.5	0.9	-0.7	-4.3
Edible vegetables, roots, and tubers.....	07	0.375	375.3	369.3	15.6	-1.9	25.8	0.5	-1.6
Edible fruit and nuts; peel of citrus fruit or melons.....	08	0.445	112.5	107.8	-5.3	-0.4	-0.6	-2.6	-4.2
Coffee, tea, mate and spices.....	09	0.402	262.8	233.0	-18.9	-1.0	-6.5	4.0	-11.3
<b>Animal or vegetable fats and oils (Dec. 2009=100).....</b>	III	0.242	123.9	121.2	-8.2	-1.4	1.2	-2.5	-2.2
<b>Prepared foodstuffs, beverages, and tobacco.....</b>	IV	2.375	157.6	157.5	-0.5	0.3	0.3	0.1	-0.1
Cocoa and cocoa preparations (Dec. 2009=100).....	18	0.186	86.9	88.3	-8.5	3.9	1.1	2.8	1.6
Preparations of cereals, flour, starch or milk; bakers' wares (Dec. 2007=100).....	19	0.231	129.3	129.4	3.1	0.3	0.5	0.4	0.1
Preparations of vegetables, fruit, nuts, or other parts of plants.....	20	0.338	167.9	168.9	-0.7	-0.5	-0.1	-1.0	0.6
Beverages, spirits, and vinegar.....	22	0.797	122.3	122.4	-0.2	0.0	0.3	0.3	0.1
<b>Mineral products.....</b>	V	23.347	345.2	334.1	-7.0	6.0	3.9	-0.1	-3.2
Mineral fuels, oils and residuals, bituminous substances and mineral waxes.....	27	23.053	341.7	330.6	-7.0	6.1	4.0	0.0	-3.2
<b>Products of the chemical or allied industries.....</b>	VI	8.328	151.2	151.6	0.9	0.3	0.1	0.5	0.3
Inorganic chemicals.....	28	0.977	393.4	393.6	0.3	1.1	0.5	-0.9	0.1
Organic chemicals.....	29	2.438	138.8	140.3	2.0	0.4	-0.3	0.3	1.1
Pharmaceutical products.....	30	3.081	119.6	119.7	2.9	0.0	0.1	2.2	0.1
Fertilizers (Dec. 2009=100).....	31	0.426	134.3	131.8	-12.8	0.1	-0.2	-1.3	-1.9
Tanning extracts; dye, pigments, varnish, paints & putty (Dec. 2011=100).....	32	0.162	93.2	93.2	-	-0.3	0.0	-10.0	0.0
Essential oils and resinoids (Dec. 2001=100).....	33	0.417	125.9	126.0	0.5	0.4	-0.2	0.4	0.1
Miscellaneous chemical products.....	38	0.463	100.7	100.8	-3.4	-0.4	0.0	-1.1	0.1
<b>Plastics and articles thereof; rubber and articles thereof.....</b>	VII	3.087	152.1	151.8	-0.6	0.0	0.3	0.3	-0.2
Plastics and articles thereof.....	39	1.886	144.4	144.8	2.0	0.1	0.9	0.4	0.3
Rubber and articles thereof.....	40	1.201	167.1	165.6	-4.4	-0.2	-0.7	0.1	-0.9
<b>Raw hides, skins, leather, furskins, travel goods, etc.....</b>	VIII	0.585	126.2	126.2	2.4	0.0	-0.1	0.0	0.0
Articles of leather; travel goods, bags, etc. of various materials.....	42	0.538	126.9	127.0	2.7	-0.1	0.0	-0.1	0.1
<b>Wood, wood charcoal, cork, straw, basketware and wickerwork.....</b>	IX	0.677	146.0	145.7	12.4	1.0	1.1	0.4	-0.2
<b>Woodpulp, recovered paper, and paper products.....</b>	X	1.185	113.4	113.4	-1.3	-0.2	-0.2	-0.1	0.0
Pulp wood, waste paper, and paperboard (Dec. 2011=100).....	47	0.175	98.6	97.6	-	-1.9	-2.1	-1.2	-1.0
Paper and paperboard; articles of paper pulp, paper or paperboard.....	48	0.794	108.5	108.6	-1.2	0.0	0.1	0.3	0.1
<b>Textile and textile articles.....</b>	XI	5.165	114.5	114.6	-0.9	-0.3	-0.3	-0.1	0.1
Articles of apparel and clothing accessories, knitted or crocheted.....	61	1.985	104.5	104.8	-1.5	-0.6	-0.8	-0.4	0.3

See footnotes at end of table.

**Table 5. U.S. import price indexes and percent changes for selected categories of goods: November 2011 to November 2012 — Continued**  
 [2000=100, unless otherwise noted]

Description	Harmonized system	Relative importance Oct. 2012 <sup>1</sup>	Index		Percent change				
			Oct. 2012	Nov. 2012	Annual	Monthly			
					Nov. 2011 to Nov. 2012	July 2012 to Aug. 2012	Aug. 2012 to Sept. 2012	Sept. 2012 to Oct. 2012	Oct. 2012 to Nov. 2012
Articles of apparel and clothing accessories, not knitted or crocheted.....	62	1.906	117.3	117.3	0.3	-0.3	0.0	-0.1	0.0
Made-up or worn textile articles.....	63	0.628	108.5	108.6	-3.7	0.0	0.1	0.0	0.1
<b>Headgear, umbrellas, artificial flowers, etc. . .</b>	XII	1.346	120.1	120.1	3.2	0.6	-0.1	0.0	0.0
Footwear and parts of such articles.....	64	1.150	119.7	119.7	3.8	0.8	0.0	0.1	0.0
<b>Stone, plaster, cement, asbestos, ceramics, glass etc.....</b>	XIII	0.754	132.0	131.8	0.8	-0.2	0.2	-0.2	-0.2
Articles of stone, plaster, cement, asbestos, or mica (Dec. 2001=100).....	68	0.241	124.8	125.3	1.0	-0.2	0.6	-1.0	0.4
Ceramic products.....	69	0.226	142.2	140.8	-0.2	0.0	0.0	0.1	-1.0
Glass and glassware.....	70	0.286	127.2	127.4	1.7	-0.2	0.1	0.2	0.2
<b>Pearls, stones, precious metals, imitation jewelry, and coins.....</b>	XIV	3.385	208.6	207.0	2.6	-1.6	2.0	4.6	-0.8
<b>Base metals and articles of base metals.....</b>	XV	4.766	185.6	184.7	-2.8	-0.5	-0.6	0.9	-0.5
Iron and steel.....	72	1.020	220.5	220.2	-11.1	-2.0	-1.7	-3.0	-0.1
Articles of iron or steel.....	73	1.400	159.8	158.8	-1.7	-0.3	-0.4	-0.1	-0.6
Copper and articles thereof.....	74	0.466	365.0	359.1	6.1	1.5	0.9	6.5	-1.6
Nickel and articles thereof (Dec. 2009=100)...	75	0.131	101.6	104.1	-4.7	-1.2	-2.5	6.9	2.5
Aluminum and articles thereof.....	76	0.699	138.2	136.8	-4.7	-0.7	-0.9	4.1	-1.0
Tools, implements, cutlery, spoons and forks, of base metal; parts thereof.....	82	0.361	127.9	128.1	3.6	0.0	0.2	-0.5	0.2
Miscellaneous articles of base metal.....	83	0.412	136.4	136.3	3.4	0.3	0.7	-0.3	-0.1
<b>Machinery, electrical equipment, TV image and sound recorders, parts, etc.....</b>	XVI	24.729	85.9	85.7	0.0	0.0	0.2	0.0	-0.2
Machinery and mechanical appliances; parts thereof.....	84	12.487	90.1	89.8	1.1	-0.1	0.4	0.0	-0.3
Electrical machinery and equip, sound and TV recorders & reproducers, parts.....	85	12.242	81.9	81.7	-1.1	0.0	0.0	0.1	-0.2
<b>Vehicles, aircraft, vessels and associated transport equipment.....</b>	XVII	10.278	116.6	116.8	1.9	0.0	0.1	0.3	0.2
Motor vehicles and their parts.....	87	9.475	115.7	115.6	1.6	0.0	0.1	0.4	-0.1
Aircraft, spacecraft, and parts thereof (Dec. 2002=100).....	88	0.705	118.4	118.4	2.2	0.1	-0.4	0.1	0.0
<b>Optical, photo, measuring, medical &amp; musical instruments; &amp; timepieces.....</b>	XVIII	3.207	104.4	104.5	-0.9	-0.6	0.1	0.4	0.1
Optical, photographic, measuring and medical instruments.....	90	2.950	101.8	101.8	-1.3	-0.6	0.1	0.3	0.0
Clocks and watches and parts thereof.....	91	0.197	131.7	132.4	3.6	-0.1	0.2	1.2	0.5
<b>Miscellaneous manufactured articles.....</b>	XX	3.689	112.6	112.7	1.0	0.0	-0.2	0.2	0.1
Furniture & stuffed furnishings; lamps & lighting fittings, nesoi; prefab bldgs.....	94	1.969	116.6	116.6	1.1	0.0	0.1	0.1	0.0
Toys, games and sports equipment; parts and accessories thereof.....	95	1.517	105.0	105.1	0.6	0.0	-0.5	0.5	0.1
Miscellaneous manufactured articles.....	96	0.202	135.9	135.9	2.0	0.1	-0.8	0.1	0.0

<sup>1</sup> Relative importance figures are based on 2010 trade values.

NOTES: Data may be revised in each of the three months after original publication.

Dash = Not available

**Table 6. U.S. export price indexes and percent changes for selected categories of goods: November 2011 to November 2012**

[2000=100, unless otherwise noted]

Description	Harmoni- zied system	Relative importance Oct. 2012 <sup>1</sup>	Index		Percent change				
			Oct. 2012	Nov. 2012	Annual	Monthly			
					Nov. 2011 to Nov. 2012	July 2012 to Aug. 2012	Aug. 2012 to Sept. 2012	Sept. 2012 to Oct. 2012	Oct. 2012 to Nov. 2012
<b>Live animals; animal products.....</b>	I	1.977	213.0	212.5	2.2	5.2	-1.8	2.7	-0.2
Meat & edible meat offal (Dec. 2006=100). . .	02	1.145	169.2	169.0	-1.2	1.2	0.8	1.6	-0.1
Fish and crustaceans, molluscs and other aquatic invertebrates.....	03	0.435	212.6	207.4	5.3	1.9	-0.1	0.9	-2.4
<b>Vegetable products.....</b>	II	6.467	276.9	278.6	17.1	5.3	1.7	-3.7	0.6
Edible fruit and nuts; peel of citrus fruit or melons.....	08	0.891	143.9	150.3	15.6	-1.9	3.5	4.1	4.4
Cereals.....	10	2.541	332.5	334.6	14.7	9.4	-1.1	-1.0	0.6
Oilseeds and misc. grains, seeds, fruits, plants, straw and fodder.....	12	2.438	304.5	302.7	26.6	5.4	4.4	-9.2	-0.6
<b>Animal or vegetable fats and oils (Dec. 2009=100).....</b>	III	0.454	143.4	133.8	-9.7	-0.3	1.7	-2.6	-6.7
<b>Prepared foodstuffs, beverages, and tobacco.....</b>	IV	2.872	167.4	168.0	11.6	3.0	1.6	0.4	0.4
Preparations of vegetables, fruit, nuts or other parts of plants (Dec. 2009=100).....	20	0.319	110.9	110.9	0.6	0.7	0.3	-1.4	0.0
Beverages, spirits, and vinegar (Dec. 2008=100).....	22	0.400	110.7	110.7	5.3	0.0	0.1	0.7	0.0
Residues and waste from the food industries; prepared animal feed.....	23	0.978	285.0	287.0	36.1	8.2	5.0	1.2	0.7
<b>Mineral products.....</b>	V	8.575	316.9	298.9	-8.6	4.4	3.9	-0.9	-5.7
Mineral fuels, oils and residuals, bituminous substances and mineral waxes.....	27	7.982	313.9	294.7	-9.0	4.8	4.2	-1.1	-6.1
<b>Products of the chemical or allied industries.....</b>	VI	12.163	155.1	154.9	0.2	0.5	0.5	0.2	-0.1
Inorganic chemicals.....	28	0.991	184.2	185.9	-5.0	0.0	0.6	-0.9	0.9
Organic chemicals.....	29	3.401	166.6	166.5	0.7	1.7	1.0	0.4	-0.1
Pharmaceutical products.....	30	3.147	125.1	124.9	0.6	0.2	0.4	0.4	-0.2
Essential oils and resinoids; perfumery cosmetic or toilet preparations.....	33	0.757	136.3	136.5	2.5	0.1	-0.2	-0.4	0.1
Soap; lubricants; waxes, polishing or scouring products; candles, pastes.....	34	0.463	123.0	123.0	-1.4	-0.1	0.0	0.0	0.0
Miscellaneous chemical products.....	38	1.759	153.6	152.6	1.5	0.0	0.3	-0.1	-0.7
<b>Plastics and articles thereof; rubber and articles thereof.....</b>	VII	5.452	149.6	148.7	0.9	0.8	2.0	-0.1	-0.6
Plastics and articles thereof.....	39	4.400	141.2	140.2	1.7	1.0	2.5	0.1	-0.7
Rubber and articles thereof.....	40	1.052	188.8	188.6	-2.4	-0.1	-0.3	-0.3	-0.1
<b>Raw hides, skins, leather, furskins, travel goods, etc.....</b>	VIII	0.374	133.0	135.0	9.0	1.6	-0.2	0.8	1.5
<b>Wood, wood charcoal, cork, straw, basketware and wickerwork.....</b>	IX	0.539	110.0	110.0	0.5	0.0	0.3	-0.3	0.0
<b>Woodpulp, recovered paper, and paper products.....</b>	X	2.261	115.9	116.9	-2.5	-1.5	-0.9	1.0	0.9
Woodpulp and recovered paper.....	47	0.578	114.5	118.0	-9.7	-6.4	-3.7	2.0	3.1
Paper and paperboard; articles of paper pulp, paper or paperboard.....	48	1.221	117.4	117.4	-0.6	0.3	0.1	0.2	0.0
Printed material.....	49	0.462	123.8	123.8	3.8	0.0	0.2	2.1	0.0
<b>Textile and textile articles.....</b>	XI	1.880	125.3	124.9	-7.4	0.8	0.6	-0.8	-0.3
Cotton, including yarns and woven fabrics thereof.....	52	0.541	130.6	129.7	-27.4	2.8	1.1	-2.8	-0.7
<b>Stone, plaster, cement, asbestos, ceramics, glass etc.....</b>	XIII	0.741	118.4	118.5	1.5	0.0	0.0	0.5	0.1
Glass and glassware.....	70	0.399	98.9	98.9	-0.4	0.1	0.0	0.4	0.0

See footnotes at end of table.

**Table 6. U.S. export price indexes and percent changes for selected categories of goods: November 2011 to November 2012 — Continued**  
 [2000=100, unless otherwise noted]

Description	Harmonized system	Relative importance Oct. 2012 <sup>1</sup>	Index		Percent change				
			Oct. 2012	Nov. 2012	Annual	Monthly			
					Nov. 2011 to Nov. 2012	July 2012 to Aug. 2012	Aug. 2012 to Sept. 2012	Sept. 2012 to Oct. 2012	Oct. 2012 to Nov. 2012
<b>Pearls, stones, precious metals, imitation jewelry, and coins.....</b>	XIV	5.411	289.9	285.7	-1.9	-1.2	3.1	3.5	-1.4
<b>Base metals and articles of base metals.....</b>	XV	5.397	171.5	171.3	-1.7	-0.1	-0.5	0.4	-0.1
Iron and steel.....	72	1.531	195.5	199.5	-6.3	0.6	-2.5	-1.7	2.0
Articles of iron or steel.....	73	1.350	173.1	172.7	0.1	-0.2	0.0	0.0	-0.2
Copper and articles thereof.....	74	0.667	258.4	247.3	-0.1	-1.5	2.0	4.5	-4.3
Aluminum and articles thereof.....	76	0.824	127.1	125.6	-2.3	-0.2	0.6	2.3	-1.2
Tools, implements, cutlery, spoons and forks, of base metal; parts thereof.....	82	0.385	133.1	133.1	3.7	0.1	0.0	1.1	0.0
Miscellaneous articles of base metal.....	83	0.336	146.0	146.0	7.6	0.1	0.0	0.0	0.0
<b>Machinery, electrical equipment, TV image and sound recorders, parts, etc.....</b>	XVI	27.331	96.8	97.0	0.7	-0.2	0.0	0.0	0.2
Machinery and mechanical appliances; parts thereof.....	84	15.925	110.5	110.9	2.1	0.0	0.0	0.0	0.4
Electrical machinery and equipment and parts and accessories thereof.....	85	11.406	82.1	82.0	-1.1	-0.2	-0.1	0.1	-0.1
<b>Vehicles, aircraft, vessels and associated transport equipment.....</b>	XVII	10.850	126.4	126.4	1.6	-0.2	-0.1	-0.2	0.0
Motor vehicles and their parts.....	87	7.156	112.5	112.5	1.2	-0.3	-0.2	-0.2	0.0
<b>Optical, photo, measuring, medical &amp; musical instruments; &amp; timepieces.....</b>	XVIII	5.769	106.3	106.3	0.8	0.0	0.2	0.1	0.0
<b>Miscellaneous manufactured articles.....</b>	XX	1.341	110.7	110.7	2.0	-0.1	0.0	0.4	0.0
Furniture; stuffed furnishings; lamps and lighting fittings nesoi;.....	94	0.695	120.8	120.9	1.4	-0.1	0.1	0.7	0.1
Toys, games and sports equipment; parts and accessories thereof.....	95	0.514	90.9	90.9	1.0	-0.3	0.0	0.0	0.0

<sup>1</sup> Relative importance figures are based on 2010 trade values.

NOTES: Data may be revised in each of the three months after original publication.

Dash = Not available

**Table 7. U.S. import price indexes and percent changes by locality of origin: November 2011 to November 2012**  
[2000=100, unless otherwise noted]

Description	Relative importance Oct. 2012 <sup>1</sup>	Index		Percent change				
		Oct. 2012	Nov. 2012	Annual	Monthly			
				Nov. 2011 to Nov. 2012	July 2012 to Aug. 2012	Aug. 2012 to Sept. 2012	Sept. 2012 to Oct. 2012	Oct. 2012 to Nov. 2012
<b>Industrialized Countries<sup>2</sup></b> .....	100.000	132.2	132.2	-0.8	0.3	1.2	0.7	0.0
Nonmanufactured articles.....	12.858	233.3	233.3	-5.3	5.9	6.8	4.0	0.0
Manufactured articles.....	86.549	124.0	123.9	-0.1	-0.5	0.5	0.2	-0.1
<b>Other Countries<sup>3</sup></b> .....	100.000	140.4	138.7	-2.3	1.5	0.7	-0.2	-1.2
Nonmanufactured articles.....	25.376	354.4	343.4	-5.7	5.5	3.5	-0.4	-3.1
Manufactured articles.....	74.268	111.1	110.5	-1.2	0.1	-0.3	-0.1	-0.5
<b>Canada</b> .....	100.000	152.3	152.5	-1.6	1.7	2.2	1.1	0.1
Nonmanufactured articles.....	29.699	219.1	219.7	-6.8	5.1	6.9	4.2	0.3
Manufactured articles.....	69.363	138.7	138.8	1.0	0.4	0.6	-0.1	0.1
<b>European Union<sup>4</sup></b> .....	100.000	135.1	135.1	-1.3	-0.1	-0.1	0.6	0.0
Nonmanufactured articles.....	2.352	380.2	371.3	-0.1	11.2	0.1	0.7	-2.3
Manufactured articles.....	96.840	131.4	131.4	-1.4	-0.4	-0.2	0.7	0.0
<b>France (Dec. 2003=100)</b> .....	100.000	119.8	120.0	-0.5	-0.3	0.1	-0.1	0.2
<b>Germany (Dec. 2003=100)</b> .....	100.000	114.7	115.1	-0.3	-0.4	0.3	0.3	0.3
<b>United Kingdom (Dec. 2003=100)</b> .....	100.000	135.0	134.3	1.1	1.5	0.4	0.4	-0.5
<b>Latin America<sup>5</sup></b> .....	100.000	177.6	174.5	-3.8	1.9	1.2	-0.4	-1.7
Nonmanufactured articles.....	35.113	377.7	365.0	-8.2	5.4	3.1	-1.5	-3.4
Manufactured articles.....	64.422	133.9	132.8	-1.3	0.2	0.3	0.1	-0.8
<b>Mexico (Dec. 2003=100)</b> .....	100.000	145.4	143.5	-3.0	1.0	0.8	-0.2	-1.3
Nonmanufactured articles (Dec. 2008=100).....	21.621	205.4	198.1	-6.9	6.5	3.7	-0.8	-3.6
Manufactured articles (Dec. 2008=100)....	78.379	94.6	93.9	-2.0	-0.3	0.0	0.0	-0.7
<b>Pacific Rim (Dec. 2003=100)<sup>6</sup></b> .....	100.000	104.4	104.2	-0.5	-0.1	-0.1	0.1	-0.2
<b>China (Dec. 2003=100)</b> .....	100.000	104.5	104.4	-0.7	0.0	-0.2	-0.2	-0.1
<b>Japan</b> .....	100.000	103.1	103.1	1.2	0.1	0.2	0.2	0.0
<b>Asian NICs<sup>7</sup></b> .....	100.000	91.2	90.5	-0.3	0.0	0.2	0.2	-0.8
<b>ASEAN (Dec. 2003=100)<sup>8</sup></b> .....	100.000	104.6	104.0	-1.0	-0.3	0.1	0.0	-0.6
<b>Asia Near East (Dec. 2003=100)<sup>9</sup></b> .....	100.000	274.3	268.9	-2.6	3.2	2.5	1.1	-2.0

1 Relative figures are based on 2010 trade values.

2 Includes Western Europe, Canada, Japan, Australia, New Zealand and South Africa.

3 Includes Eastern Europe, Latin America, OPEC countries, and other countries in Asia, Africa and the Western Hemisphere.

4 Includes European Union countries.

5 Includes Mexico, Central America, South America and the Caribbean.

6 Includes China, Japan, Australia, Brunei, Indonesia, Macao, Malaysia, New Zealand, Papua New Guinea, Philippines and Asian Newly Industrialized Countries.

7 Asian Newly Industrialized Countries. Includes Hong Kong, Singapore, South Korea and Taiwan.

8 Association of Southeast Asian Nations. Includes Brunei, Cambodia, Indonesia, Laos, Malaysia, Myanmar, Philippines, Singapore, Thailand and Vietnam.

9 Includes Bahrain, Iran, Iraq, Israel, Jordan, Kuwait, Lebanon, Oman, Qatar, Saudi Arabia, Syria, United Arab Emirates and Yemen.

NOTES: Data may be revised in each of the three months after original publication.

Regions are not mutually exclusive.

Dash = Not available

**Table 8. U.S. international price indexes and percent changes for selected transportation services: November 2011 to November 2012**

[2000=100, unless otherwise noted]

Description	Relative importance Oct. 2012 <sup>1</sup>	Index		Percent change				
		Oct. 2012	Nov. 2012	Annual	Monthly			
				Nov. 2011 to Nov. 2012	July 2012 to Aug. 2012	Aug. 2012 to Sept. 2012	Sept. 2012 to Oct. 2012	Oct. 2012 to Nov. 2012
<b>Air Freight</b>								
<b>Import Air Freight</b> .....	100.000	176.2	177.0	-0.5	-1.6	0.3	1.3	0.5
Europe (Dec. 2003=100).....	24.217	164.4	166.5	-1.4	-0.9	1.0	4.2	1.3
Asia.....	71.296	156.5	156.8	-0.2	-2.0	0.1	0.5	0.2
<b>Export Air Freight</b> .....	100.000	148.5	148.1	2.8	-1.0	2.4	1.2	-0.3
Europe (Dec. 2006=100).....	35.200	130.5	130.0	-0.3	-1.0	1.7	-1.3	-0.4
<b>Inbound Air Freight</b> .....	100.000	165.3	168.0	3.6	-0.3	1.4	1.3	1.6
Europe (Dec. 2003=100).....	24.481	150.3	151.4	1.3	-1.0	1.4	3.5	0.7
Asia.....	64.434	150.6	154.0	4.8	-0.1	1.4	0.6	2.3
<b>Outbound Air Freight</b> .....	100.000	147.5	149.2	3.9	0.0	1.4	0.5	1.2
Europe (Dec. 2003=100).....	30.235	162.2	162.7	-0.4	0.1	0.7	-1.3	0.3
Asia.....	49.672	140.1	143.1	7.0	-0.1	1.8	1.0	2.1
<b>Air Passenger Fares</b>								
<b>Import Air Passenger Fares</b> .....	100.000	183.4	181.8	2.9	-5.5	-1.6	2.0	-0.9
Europe.....	40.661	198.2	202.9	12.7	-8.0	0.6	3.7	2.4
Asia.....	26.052	152.1	147.5	-5.0	-3.5	-5.4	-0.3	-3.0
Latin America/Caribbean.....	10.839	159.2	169.2	-2.3	-2.0	-9.1	1.5	6.3
<b>Export Air Passenger Fares</b> .....	100.000	185.0	185.7	0.9	0.8	-12.4	-1.5	0.4
Europe.....	26.856	212.6	216.2	1.6	-5.3	-9.8	-3.0	1.7
Asia.....	28.163	166.9	161.5	-7.3	24.4	-25.9	-1.9	-3.2
Latin America/Caribbean.....	24.164	216.6	226.7	18.8	-6.6	-0.3	-2.1	4.7

<sup>1</sup> Relative importance figures are based on 2010 trade values.

NOTES: Data may be revised in each of the three months after original publication.

Dash = Not available

## TECHNICAL NOTE

**Import and Export Merchandise and Services Price Indexes** -- All indexes use a modified Laspeyres formula and are not seasonally adjusted. Price indexes are reweighted annually, with a two-year lag in the weights. Published series use a base year of 2000=100 where possible. More detailed index series and additional information may be obtained at <http://www.bls.gov/mxp>, or by calling (202) 691-7101.

**Merchandise Goods Classification Systems** -- The merchandise price indexes are published using three classification systems. Items are classified by end use according to the Bureau of Economic Analysis Classification System, by industry according to the North American Industry Classification System (NAICS), and by product category according to the Harmonized System (HS). While classification by end use and product category are self-explanatory, some notes are in order for classifying items by industry. In the NAICS imports and exports tables, items are classified by output industry, not input industry. As an example, NAICS import index 326 (plastics and rubber products manufacturing) include outputs such as manufactured plastic rather than inputs such as petroleum. The NAICS classification structure also matches the classification system used by the PPI (Producer Price Index) to produce the NAICS primary products indexes.

**Import Price Indexes** -- Products have been classified by the Harmonized Tariff Schedule of the United States Annotated (TSUSA). Import prices are based on U.S. dollar prices paid by the U.S. importer. The prices are generally either "free on board" (f.o.b.) foreign port or "cost, insurance, and freight" (c.i.f.) U.S. port transaction prices, depending on the practices of the individual industry. The index for crude petroleum is calculated from data collected by the U.S. Department of Energy.

**Export Price Indexes** -- Products have been classified by the Harmonized Schedule B classification system of the U.S. Bureau of the Census. The prices used are generally either "free alongside ship" (f.a.s.) factory or "free on board" (f.o.b.) transaction prices, depending on the practices of the individual industry. Prices used in the grain index, excluding rice, are obtained from the U.S. Department of Agriculture.

**Services Price Indexes** -- Starting in September 2008 the Import Air Passenger Fares Indexes represent changes in the average revenue per passenger received by foreign carriers from U.S. residents and are calculated from data obtained from an airline consulting service. These data include tickets sold by travel agencies and travel websites. Tickets sold directly by the airlines are excluded, as are frequent flyer tickets generally. Starting in January 2008 the Export Air Passenger Fares Indexes represent changes in the average revenue per passenger received by U.S. carriers from foreign residents and are calculated from data collected directly from airlines. These data include frequent flyer tickets and those sold by consolidators. Taxes and fees are included in the Import Air Passenger Fares Index and excluded from the Export Air Passenger Fares Index. The Air Freight Indexes are calculated from data collected directly from airlines. These data exclude mail and passenger baggage. The scope of the service being priced is the movement of freight from airport to airport only, and does not include any ground transportation or port service. The Air Freight Indexes are presented using two definitions: Balance of Payments (which represent transactions between U.S. and foreign residents) and International (which represent transactions inbound to and outbound from the U.S.). Fact sheets specifying detailed information for each services industry are available at <http://www.bls.gov/mxp> under "MXP Publications."

**Import Indexes by Locality of Origin** -- Prices used in these indexes are a subset of the data collected for the Import Price Indexes. Beginning with January 2002, the indexes are defined by locality of origin using a nomenclature based upon the North American Industry Classification System (NAICS). Nonmanufactured goods are defined as NAICS 11 and 21 and manufactured goods are defined as NAICS 31-33.

**Revision Policy** -- To reflect the availability of late reports and corrections by respondents, monthly data may be revised in each of the three months after original publication. After three months, no further data revisions take place. So, for example, data released in the January release will be subject to revision in the releases for February, March, and April.

**Uses of the Data** -- The primary use of the indexes is to deflate trade statistics, notably the foreign trade sector of the National Income and Product Accounts constructed by the Department of Commerce. Other published indexes are useful for general market analysis. For trade in international services, Balance of Payments indexes are used for deflating National Income and Product Accounts, while International indexes are more appropriate for market analysis. Merchandise and services indexes also can be used to study U.S. competitiveness and to compute price elasticities, and the merchandise import indexes by country or region of origin are useful in terms of trade analysis.

**E-Mail Subscription** -- The U.S. Import and Export Price Indexes news release is available through an e-mail subscription service at (<http://www.bls.gov/bls/list.htm>).

**Additional Information** -- More detailed data are available on the Import/Export Price Indexes home page at (<http://www.bls.gov/mxp>). Flat Files and the FTP server are available for users requiring access to either a large volume of time series data or other related documentation. The FTP site can be accessed at <ftp://ftp.bls.gov>. For technical assistance in using the BLS Internet site, send e-mail to ([labstat.helpdesk@bls.gov](mailto:labstat.helpdesk@bls.gov)). For Import/Export Price Index data requests, send e-mail to ([mxpinfo@bls.gov](mailto:mxpinfo@bls.gov)).

Information from this release will be made available to sensory impaired individuals upon request. Voice phone: 202-691-5200; Federal Relay Service: 1-800-877-8339.