

**Transmission of material in this release is embargoed until
8:30 a.m. (EDT) Thursday, May 16, 2013**

USDL-13-0929

Technical information: (202) 691-7000 • Reed.Steve@bls.gov • www.bls.gov/cpi
Media Contact: (202) 691-5902 • PressOffice@bls.gov

CONSUMER PRICE INDEX – APRIL 2013

The Consumer Price Index for All Urban Consumers (CPI-U) decreased 0.4 percent in April on a seasonally adjusted basis, the U.S. Bureau of Labor Statistics reported today. Over the last 12 months, the all items index increased 1.1 percent before seasonal adjustment.

As was the case in March, a sharp decrease in the gasoline index was the primary cause of the decline in the seasonally adjusted all items index. The fuel oil index also declined while the electricity and natural gas indexes increased; the net result was a 4.3 percent decrease in the energy index. The food index, unchanged in March, rose 0.2 percent in April.

The index for all items less food and energy increased 0.1 percent in April, the same increase as in March. The indexes for shelter, used cars and trucks, new vehicles, and tobacco all increased in April. These increases were partially offset by declines in the indexes for apparel, airline fares, and recreation.

The all items index increased 1.1 percent over the last 12 months, the smallest 12-month increase since November 2010. The index for all items less food and energy increased 1.7 percent over the span; this was its smallest 12-month increase since June 2011. The food index rose 1.5 percent while the energy index declined 4.3 percent.

Chart 1. One-month percent change in CPI for All Urban Consumers (CPI-U), seasonally adjusted, Apr. 2012 - Apr. 2013
Percent change

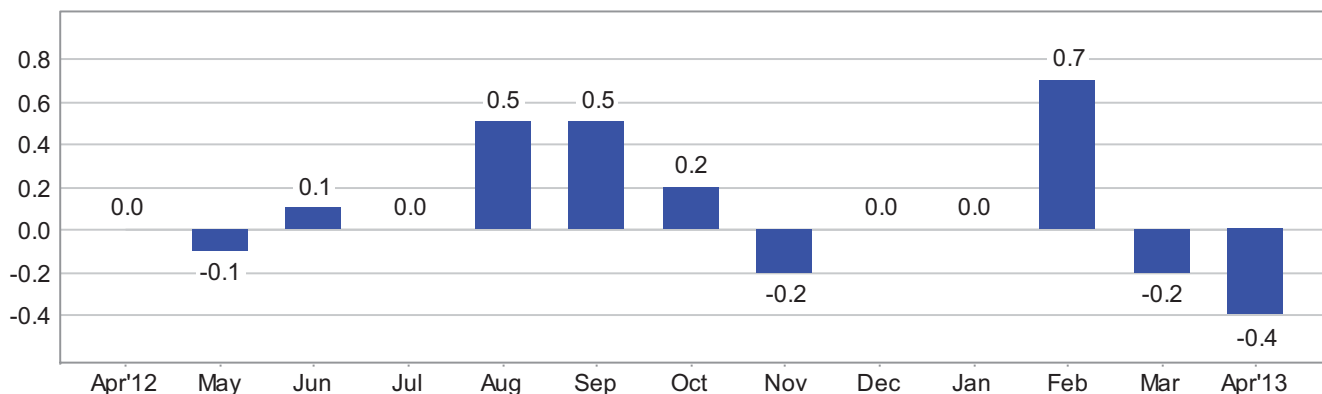


Chart 2. 12-month percent change in CPI for All Urban Consumers (CPI-U), not seasonally adjusted, Apr. 2012 - Apr. 2013

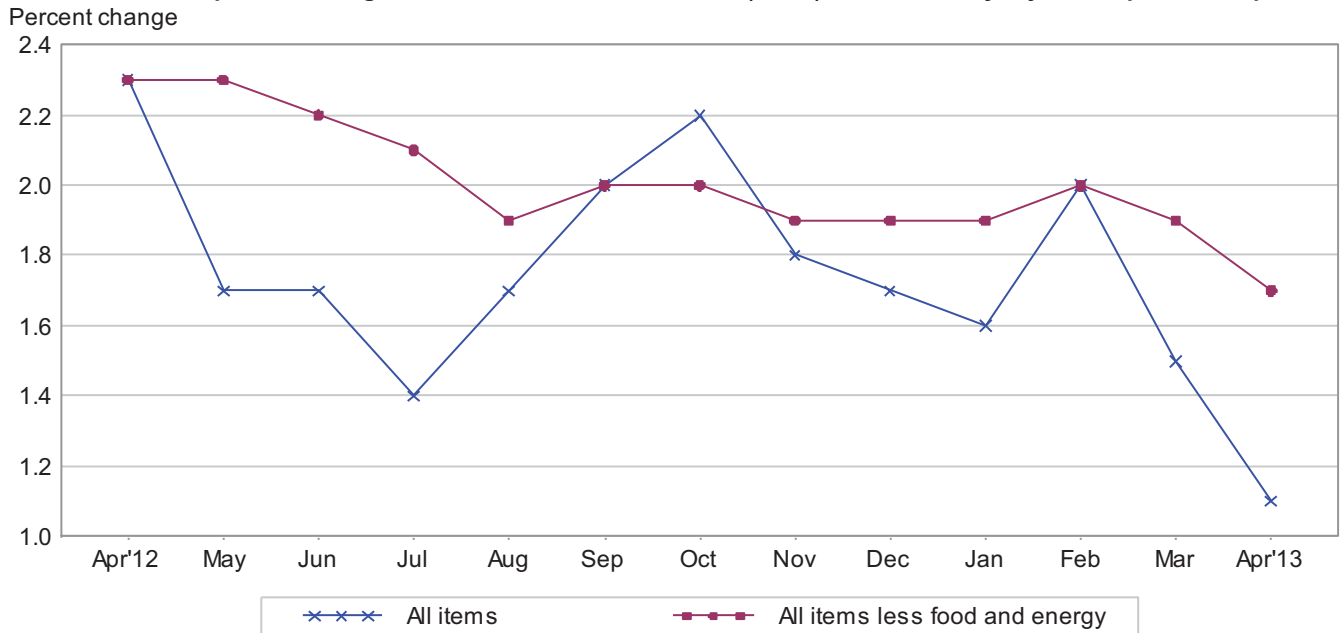


Table A. Percent changes in CPI for All Urban Consumers (CPI-U): U.S. city average

	Seasonally adjusted changes from preceding month							Un-adjusted 12-mos. ended Apr. 2013
	Oct. 2012	Nov. 2012	Dec. 2012	Jan. 2013	Feb. 2013	Mar. 2013	Apr. 2013	
All items2	-.2	.0	.0	.7	-.2	-.4	1.1
Food2	.2	.2	.0	.1	.0	.2	1.5
Food at home3	.3	.2	.0	.1	-.1	.1	1.0
Food away from home ¹1	.1	.1	.1	.1	.2	.3	2.3
Energy1	-3.4	-.8	-1.7	5.4	-2.6	-4.3	-4.3
Energy commodities1	-5.7	-1.5	-3.0	8.6	-4.1	-7.9	-8.1
Gasoline (all types)	-.1	-6.0	-1.9	-3.0	9.1	-4.4	-8.1	-8.3
Fuel oil ¹	1.1	-.2	.0	-.2	3.1	-2.1	-4.4	-5.6
Energy services2	.6	.3	.4	.5	-.2	1.4	2.6
Electricity3	.4	.2	1.1	.3	-.6	.5	1.1
Utility (piped) gas service	-.2	1.5	.7	-1.7	1.2	1.0	4.4	7.6
All items less food and energy2	.1	.1	.3	.2	.1	.1	1.7
Commodities less food and energy commodities0	-.1	-.1	.2	.0	-.1	.0	-.1
New vehicles1	.3	.2	.1	-.3	.1	.3	1.2
Used cars and trucks	-.7	-.4	-.3	.2	.8	1.2	.6	-.6
Apparel6	-.5	.1	.8	-.1	-1.0	-.3	.3
Medical care commodities1	-.3	-.3	.1	-.4	.1	.1	.7
Services less energy services2	.2	.2	.3	.2	.2	.1	2.3
Shelter2	.2	.1	.2	.2	.2	.2	2.2
Transportation services6	.2	.4	.5	.1	.2	-.2	2.5
Medical care services1	.3	.3	.2	.3	.3	-.1	3.4

¹ Not seasonally adjusted.

Consumer Price Index Data for April 2013

Food

The food index increased 0.2 percent in April after being unchanged in March. The index for food at home turned up in April, increasing 0.1 percent after declining 0.1 percent the prior month. Four of the six major grocery store food group indexes increased in April. The largest increase was for the cereals and bakery products index, which rose 0.6 percent. The indexes for meats, poultry, fish, and eggs, and for other food at home both increased 0.4 percent, while the nonalcoholic beverages index rose 0.3 percent. In contrast, the index for fruits and vegetables fell 1.4 percent in April as the indexes for fresh fruits and fresh vegetables both declined for the second straight month. The index for dairy and related products was unchanged in April after declining in February and March. Over the last 12 months, the food at home index has risen 1.0 percent with all the major component groups increasing over that span except nonalcoholic beverages, which fell 0.2 percent. The index for food away from home increased 0.3 percent in April; this was its largest increase since August and it has risen 2.3 percent over the past year.

Energy

The energy index declined significantly for the second straight month, falling 4.3 percent in April after a 2.6 percent decline in March. The gasoline index, down 4.4 percent in March, fell 8.1 percent in April. (Before seasonal adjustment, gasoline prices decreased 3.7 percent in April.) The index for fuel oil also continued to decline, falling 4.4 percent after decreasing 2.1 percent the prior month. However, the index for natural gas increased sharply in April; its 4.4 percent increase was its largest since July 2008. The electricity index also rose, increasing 0.5 percent. Over the past 12 months, the index for gasoline has declined 8.3 percent and the fuel oil index has fallen 5.6 percent. In contrast to these declines, the index for natural gas has risen 7.6 percent and the electricity index has increased 1.1 percent.

All items less food and energy

The index for all items less food and energy increased 0.1 percent in April, the same increase as in March. The shelter index increased 0.2 percent for the fourth month in a row. The indexes for rent and for owners' equivalent rent both advanced 0.2 percent. The index for used cars and trucks increased for the fourth month in a row, rising 0.6 percent in April. The index for new vehicles rose as well, advancing 0.3 percent. The tobacco index turned up, rising 0.6 percent in April after declining in February and March. The medical care index was unchanged in April, the first time it failed to rise since July 2010. The index for medical care commodities rose 0.1 percent, while the medical care services index fell 0.1 percent with the hospital services index declining 0.7 percent. Among the indexes declining in April was the apparel index, which fell 0.3 percent, its third consecutive decrease. The index for airline fares also fell, declining 0.7 percent, and the recreation index decreased 0.1 percent. The index for household furnishings and operations also fell 0.1 percent, its fourth decline in the last five months.

The index for all items less food and energy increased 1.7 percent for the 12 months ending April. This is slightly below the 1.9 percent average annual increase for the past ten years. The shelter index rose 2.2 percent over the past year, with the rent index increasing 2.7 percent and owners' equivalent rent rising 2.1 percent.

Not seasonally adjusted CPI measures

The Consumer Price Index for All Urban Consumers (CPI-U) increased 1.1 percent over the last 12 months to an index level of 232.531 (1982-84=100). For the month, the index decreased 0.1 percent prior to seasonal adjustment.

The Consumer Price Index for Urban Wage Earners and Clerical Workers (CPI-W) increased 0.9 percent over the last 12 months to an index level of 228.949 (1982-84=100). For the month, the index decreased 0.2 percent prior to seasonal adjustment.

The Chained Consumer Price Index for All Urban Consumers (C-CPI-U) increased 1.1 percent over the last 12 months. For the month, the index decreased 0.1 percent on a not seasonally adjusted basis. Please note that the indexes for the post-2011 period are subject to revision.

The Consumer Price Index for May 2013 is scheduled to be released on Tuesday, June 18, 2013, at 8:30 a.m. (EDT).

Discontinuation of Department Store Inventory Indexes

The Bureau of Labor Statistics will discontinue publication of its Department Store Inventory indexes after the release of the December 2013 CPI in mid-January 2014, and these values will no longer be uploaded to the Labstat database. For further information please contact Sharon Gibson at 202-691-6968 or gibson.sharon@bls.gov.

Publication Changes for Average Price Series

The Bureau of Labor Statistics will discontinue publication of three average price series after the release of the June 2013 CPI in mid-July 2013. They are:

- utility (piped) gas, 40 therms;
- utility (piped) gas, 100 therms; and
- electricity, 500 kilowatt hours.

The Bureau will, however, continue to publish average prices for utility (piped) gas on a per therm basis, and will continue to publish electricity prices on a per kilowatt hour basis. As such, users will be able to convert these data to any consumption amount. CPI Detailed Report table *P1. Average residential prices for utility (piped) gas, electricity, and fuel oil, U.S. city average and selected areas* will no longer be published. Data for fuel oil #2, per gallon (3.785 liters) will continue to be available in the CPI Average Price Data public database.

Facilities for Sensory Impaired

Information from this release will be made available to sensory impaired individuals upon request. Voice phone: 202-691-5200, Federal Relay Services: 1-800-877-8339.

Brief Explanation of the CPI

The Consumer Price Index (CPI) is a measure of the average change in prices over time of goods and services purchased by households. The Bureau of Labor Statistics publishes CPIs for two population groups: (1) the CPI for Urban Wage Earners and Clerical Workers (CPI-W), which covers households of wage earners and clerical workers that comprise approximately 29 percent of the total population and (2) the CPI for All Urban Consumers (CPI-U) and the Chained CPI for All Urban Consumers (C-CPI-U), which cover approximately 88 percent of the total population and include in addition to wage earners and clerical worker households, groups such as professional, managerial, and technical workers, the self-employed, short-term workers, the unemployed, and retirees and others not in the labor force.

The CPIs are based on prices of food, clothing, shelter, and fuels, transportation fares, charges for doctors' and dentists' services, drugs, and other goods and services that people buy for day-to-day living. Prices are collected each month in 87 urban areas across the country from about 4,000 housing units and approximately 26,000 retail establishments-department stores, supermarkets, hospitals, filling stations, and other types of stores and service establishments. All taxes directly associated with the purchase and use of items are included in the index. Prices of fuels and a few other items are obtained every month in all 87 locations. Prices of most other commodities and services are collected every

month in the three largest geographic areas and every other month in other areas. Prices of most goods and services are obtained by personal visits or telephone calls of the Bureau's trained representatives.

In calculating the index, price changes for the various items in each location are averaged together with weights, which represent their importance in the spending of the appropriate population group. Local data are then combined to obtain a U.S. city average. For the CPI-U and CPI-W separate indexes are also published by size of city, by region of the country, for cross-classifications of regions and population-size classes, and for 27 local areas. Area indexes do not measure differences in the level of prices among cities; they only measure the average change in prices for each area since the base period. For the C-CPI-U data are issued only at the national level. It is important to note that the CPI-U and CPI-W are considered final when released, but the C-CPI-U is issued in preliminary form and subject to two annual revisions.

The index measures price change from a designed reference date. For the CPI-U and the CPI-W the reference base is 1982-84 equals 100. The reference base for the C-CPI-U is December 1999 equals 100. An increase of 16.5 percent from the reference base, for example, is shown as 116.500. This change can also be expressed in dollars as follows: the price of a base period market basket of goods and services in the CPI has risen from \$10 in 1982-84 to \$11.65.

For further details visit the CPI home page on the Internet at <http://www.bls.gov/cpi/> or contact our CPI Information and Analysis Section on (202) 691-7000.

Note on Sampling Error in the Consumer Price Index

The CPI is a statistical estimate that is subject to sampling error because it is based upon a sample of retail prices and not the complete universe of all prices. BLS calculates and publishes estimates of the 1-month, 2-month, 6-month and 12-month percent change standard errors annually, for the CPI-U. These standard error estimates can be used to construct confidence intervals for hypothesis testing. For example, the estimated standard error of the 1 month percent change is 0.04 percent for the U.S. All Items Consumer Price Index. This means that if we repeatedly sample from the universe of all retail prices using the same methodology, and estimate a percentage change for each sample, then 95% of these estimates would be within 0.08 percent of the 1 month percentage change based on all retail prices. For example, for a 1-month change of 0.2 percent in the All Items CPI for All Urban Consumers, we are 95 percent confident that the actual percent change based on all retail prices would fall between 0.12 and 0.28 percent. For the latest data, including information on how to use the estimates of standard error, see "Variance Estimates for Price Changes in the Consumer Price Index, January-December 2012". These data are available on the CPI home page (<http://www.bls.gov/cpi/>), or by using the following link: <http://www.bls.gov/cpi/cpivar2012.pdf>

Calculating Index Changes

Movements of the indexes from one month to another are usually expressed as percent changes rather than changes in index points, because index point changes are affected by the level of the index in relation to its base period while percent changes are not. The example below illustrates the computation of index point and percent changes.

Percent changes for 3-month and 6-month periods are expressed as annual rates and are computed according to the standard formula for compound growth rates. These data indicate what the percent change would be if the current rate were maintained for a 12-month period.

Index Point Change

CPI	202.416
Less previous index	201.800
Equals index point change	.616

Percent Change

Index point difference	.616
Divided by the previous index	201.800
Equals	0.003
Results multiplied by one hundred	0.003x100
Equals percent change	0.3

A Note on Seasonally Adjusted and Unadjusted Data

Because price data are used for different purposes by different groups, the Bureau of Labor Statistics publishes seasonally adjusted as well as unadjusted changes each month.

For analyzing general price trends in the economy, seasonally adjusted changes are usually preferred since they eliminate the effect of changes that normally occur at the same time and in about the same magnitude every year--such as price movements resulting from changing climatic conditions, production cycles, model changeovers, holidays, and sales.

The unadjusted data are of primary interest to consumers concerned about the prices they actually pay. Unadjusted data also are used extensively for escalation purposes. Many collective bargaining contract agreements and pension plans, for example, tie compensation changes to the Consumer Price Index before adjustment for seasonal variation.

Seasonal factors used in computing the seasonally adjusted indexes are derived by the X-12-ARIMA Seasonal Adjustment Method. Seasonally adjusted indexes and seasonal factors are computed annually. Each year, the last 5 years of seasonally adjusted data are revised. Data from January 2008 through December 2012 were replaced in January 2013. Exceptions to the usual revision schedule were: the updated seasonal data at the end of 1977 replaced data from 1967 through 1977; and, in January 2002, dependently seasonally adjusted series were revised for January 1987-December 2001 as a result of a change in the aggregation weights for dependently adjusted series. For further information, please see "Aggregation of Dependently Adjusted Seasonally Adjusted Series," in the October 2001 issue of the CPI Detailed Report.

Effective with the publication of data from January 2006 through December 2010 in January 2011, the Video and audio series and the Information technology, hardware and services series were changed from independently adjusted to dependently adjusted. This resulted in an increase in the number of seasonal components used in deriving seasonal movement of the All items and 54 other lower level aggregations, from 73 for the publication of January 1998 through December 2005 data to 82 for the publication of seasonally adjusted data for January 2006 and later. Each year the seasonal status of every series is reevaluated based upon certain statistical criteria. If any of the 82 components change their seasonal adjustment status from seasonally adjusted to not seasonally adjusted, not seasonally adjusted data will be used in the aggregation of the dependent series for the last 5 years, but the seasonally adjusted indexes before that period will not be changed. Note: 37 of the 82 components are not seasonally adjusted for 2013.

Seasonally adjusted data, including the all items index levels, are subject to revision for up to five years after their original release. For this reason, BLS advises against the use of these data in escalation agreements.

Effective with the calculation of the seasonal factors for 1990, the Bureau of Labor Statistics has used an enhanced seasonal adjustment procedure called Intervention Analysis Seasonal Adjustment for some CPI series. Intervention Analysis Seasonal Adjustment allows for better estimates of seasonally adjusted data. Extreme values and/or sharp movements which might distort the seasonal pattern are estimated and removed from the data prior to calculation of seasonal factors. Beginning with the calculation of seasonal factors for 1996, X-12-ARIMA software was used for Intervention Analysis Seasonal Adjustment.

For the seasonal factors introduced in January 2013, BLS adjusted 31 series using Intervention Analysis Seasonal Adjustment, including selected food and beverage items, motor fuels, electricity and vehicles. For example, this procedure was used for the Motor fuel series to offset the effects of events such as damage to oil refineries from Hurricane Katrina.

For a complete list of Intervention Analysis Seasonal Adjustment series and explanations, please refer to the article "Intervention Analysis Seasonal Adjustment", located on our website at <http://www.bls.gov/cpi/cpisapage.htm>.

For additional information on seasonal adjustment in the CPI, please write to the Bureau of Labor Statistics, Division of Consumer Prices and Price Indexes, Washington, DC 20212 or contact Chris Graci at (202) 691-5826, or by e-mail at graci.christopher@bls.gov or contact Carlyle Jackson at (202) 691-6984, or by e-mail at jackson.carlyle@bls.gov. If you have general questions about the CPI, please call our information staff at (202) 691-7000.

Table 1. Consumer Price Index for All Urban Consumers (CPI-U): U.S. city average, by expenditure category, April 2013

[1982-84=100, unless otherwise noted]

Expenditure category	Relative importance Mar. 2013	Unadjusted indexes			Unadjusted percent change		Seasonally adjusted percent change		
		Apr. 2012	Mar. 2013	Apr. 2013	Apr. 2012-Apr. 2013	Mar. 2013-Apr. 2013	Jan. 2013-Feb. 2013	Feb. 2013-Mar. 2013	Mar. 2013-Apr. 2013
All items.....	100.000	230.085	232.773	232.531	1.1	-0.1	0.7	-0.2	-0.4
Food.....	14.173	233.234	236.332	236.841	1.5	0.2	0.1	0.0	0.2
Food at home.....	8.513	231.711	233.777	234.082	1.0	0.1	0.1	-0.1	0.1
Cereals and bakery products.....	1.220	268.014	269.504	271.388	1.3	0.7	-0.2	0.2	0.6
Meats, poultry, fish, and eggs.....	1.937	230.967	233.294	234.320	1.5	0.4	0.5	0.0	0.4
Dairy and related products ¹	0.887	216.918	218.123	218.141	0.6	0.0	-0.4	-0.6	0.0
Fruits and vegetables.....	1.281	281.648	291.284	287.545	2.1	-1.3	1.4	-0.4	-1.4
Nonalcoholic beverages and beverage materials.....	0.933	169.191	168.736	168.812	-0.2	0.0	0.0	-0.2	0.3
Other food at home.....	2.254	204.864	205.264	206.177	0.6	0.4	-0.6	0.2	0.4
Food away from home ¹	5.660	236.695	241.409	242.236	2.3	0.3	0.1	0.2	0.3
Energy.....	10.081	255.736	249.565	244.757	-4.3	-1.9	5.4	-2.6	-4.3
Energy commodities.....	6.346	339.793	324.016	312.270	-8.1	-3.6	8.6	-4.1	-7.9
Fuel oil ¹	0.232	390.483	385.552	368.552	-5.6	-4.4	3.1	-2.1	-4.4
Motor fuel.....	6.013	336.673	320.739	309.048	-8.2	-3.6	9.0	-4.2	-8.1
Gasoline (all types).....	5.819	335.742	319.523	307.814	-8.3	-3.7	9.1	-4.4	-8.1
Energy services ²	3.735	185.834	188.856	190.669	2.6	1.0	0.5	-0.2	1.4
Electricity ²	2.840	192.472	193.856	194.553	1.1	0.4	0.3	-0.6	0.5
Utility (piped) gas service ²	0.895	163.692	171.248	176.159	7.6	2.9	1.2	1.0	4.4
All items less food and energy.....	75.746	229.303	233.052	233.236	1.7	0.1	0.2	0.1	0.1
Commodities less food and energy commodities.....	19.482	148.070	147.717	147.992	-0.1	0.2	0.0	-0.1	0.0
Apparel.....	3.588	128.485	128.279	128.861	0.3	0.5	-0.1	-1.0	-0.3
New vehicles.....	3.163	144.522	145.989	146.188	1.2	0.1	-0.3	0.1	0.3
Used cars and trucks.....	1.863	151.087	148.753	150.160	-0.6	0.9	0.8	1.2	0.6
Medical care commodities.....	1.704	333.060	335.198	335.293	0.7	0.0	-0.4	0.1	0.1
Alcoholic beverages.....	0.946	230.092	234.015	234.282	1.8	0.1	0.4	0.2	0.2
Tobacco and smoking products ¹	0.795	847.032	863.888	869.057	2.6	0.6	-0.2	-0.2	0.6
Services less energy services.....	56.263	278.431	284.834	284.954	2.3	0.0	0.2	0.2	0.1
Shelter.....	31.494	256.031	261.330	261.655	2.2	0.1	0.2	0.2	0.2
Rent of primary residence ²	6.498	258.922	265.821	265.984	2.7	0.1	0.3	0.2	0.2
Owners' equivalent rent of residences ^{2, 3}	23.831	263.765	268.802	269.216	2.1	0.2	0.2	0.1	0.2
Medical care services.....	5.454	437.151	452.596	452.083	3.4	-0.1	0.3	0.3	-0.1
Physicians' services ²	1.606	344.151	352.575	353.529	2.7	0.3	0.0	0.2	0.4
Hospital services ^{2, 4}	1.572	251.819	264.586	262.595	4.3	-0.8	0.8	0.4	-0.7
Transportation services.....	5.808	272.146	278.874	279.065	2.5	0.1	0.1	0.2	-0.2
Motor vehicle maintenance and repair ¹	1.140	256.544	260.156	260.341	1.5	0.1	0.2	0.0	0.1
Motor vehicle insurance.....	2.466	397.507	415.381	414.955	4.4	-0.1	0.2	0.1	0.0
Airline fare.....	0.785	312.845	315.303	318.815	1.9	1.1	-0.3	0.6	-0.7

1 Not seasonally adjusted.

2 This index series was calculated using a Laspeyres estimator. All other item stratum index series were calculated using a geometric means estimator.

3 Indexes on a December 1982=100 base.

4 Indexes on a December 1996=100 base.

NOTE: Index applies to a month as a whole, not to any specific date.

Table 2. Consumer Price Index for All Urban Consumers (CPI-U): U.S. city average, by detailed expenditure category, April 2013

[1982-84=100, unless otherwise noted]

Expenditure category	Relative importance Mar. 2013	Unadjusted percent change		Seasonally adjusted percent change		
		Apr. 2012- Apr. 2013	Mar. 2013- Apr. 2013	Jan. 2013- Feb. 2013	Feb. 2013- Mar. 2013	Mar. 2013- Apr. 2013
All items.....	100.000	1.1	-0.1	0.7	-0.2	-0.4
Food.....	14.173	1.5	0.2	0.1	0.0	0.2
Food at home.....	8.513	1.0	0.1	0.1	-0.1	0.1
Cereals and bakery products.....	1.220	1.3	0.7	-0.2	0.2	0.6
Cereals and cereal products.....	0.463	-0.5	0.5	0.7	-0.5	0.3
Flour and prepared flour mixes.....	0.052	1.9	2.1	-0.8	-0.8	2.7
Breakfast cereal ¹	0.284	-0.6	0.6	1.2	-0.8	0.6
Rice, pasta, cornmeal ¹	0.128	-1.3	-0.4	0.3	-0.3	-0.4
Rice ^{1, 2, 3}		0.5	0.5	-0.5	0.9	0.5
Bakery products.....	0.757	2.4	0.8	-0.7	0.7	0.9
Bread ²	0.223	2.8	1.1	-0.4	0.0	1.0
White bread ^{1, 3}		3.4	0.8	-0.3	1.1	0.8
Bread other than white ^{1, 3}		2.6	1.0	0.5	-1.3	1.0
Fresh biscuits, rolls, muffins ^{1, 2}	0.113	3.6	0.5	-1.2	1.0	1.3
Cakes, cupcakes, and cookies.....	0.183	0.5	-0.2	-1.1	1.2	-0.4
Cookies ^{1, 3}		2.1	0.4	-1.2	2.5	0.0
Fresh cakes and cupcakes ^{1, 3}		-0.8	-0.8	-0.3	0.3	-0.8
Other bakery products.....	0.238	2.9	1.5	-0.3	0.8	1.7
Fresh sweetrolls, coffeecakes, doughnuts ^{1, 3}		8.3	0.4	0.6	1.2	0.4
Crackers, bread, and cracker products ³		-0.1	2.1	-1.3	1.5	1.9
Frozen and refrigerated bakery products, pies, tarts, turnovers ³		1.5	1.1	0.4	-0.7	1.3
Meats, poultry, fish, and eggs.....	1.937	1.5	0.4	0.5	0.0	0.4
Meats, poultry, and fish.....	1.827	1.4	0.4	0.4	0.0	0.3
Meats.....	1.181	0.3	-0.3	0.9	-0.3	-0.1
Beef and veal ¹	0.558	1.8	-0.5	0.4	0.1	-0.5
Uncooked ground beef ¹	0.219	2.7	-0.3	0.4	0.3	-0.3
Uncooked beef roasts ^{1, 2}	0.083	3.3	-1.7	0.5	1.6	-1.7
Uncooked beef steaks ^{1, 2}	0.204	-0.2	-0.7	0.1	-0.7	-0.7
Uncooked other beef and veal ^{1, 2}	0.052	4.1	0.7	1.0	-0.6	0.7
Pork.....	0.363	-1.6	-0.6	0.9	-0.2	0.2
Bacon, breakfast sausage, and related products ²		1.4	-0.1	-0.3	2.1	-0.3
Bacon and related products ³		3.0	-0.9	-0.4	3.8	-0.6
Breakfast sausage and related products ^{2, 3}		0.2	0.7	0.9	1.0	0.1
Ham.....	0.079	-2.2	-3.6	1.4	1.1	-1.6
Ham, excluding canned ³		-2.4	-3.9	1.3	1.1	-1.7
Pork chops.....	0.060	-2.2	-1.2	2.1	-1.5	-0.7
Other pork including roasts and picnics ²	0.084	-5.3	1.6	1.3	-2.3	0.7
Other meats.....	0.260	-0.2	0.4	1.8	-1.1	0.5
Frankfurters ³		0.0	-1.7	4.2	-0.9	-0.5
Lunchmeats ^{1, 2, 3}		0.0	-0.2	0.7	-0.4	-0.2
Lamb and organ meats ^{1, 3}		-3.4	3.5	2.7	-0.8	3.5
Lamb and mutton ^{1, 2, 3}		-13.0	4.2	1.9	-1.1	4.2
Poultry.....	0.347	4.2	0.7	-0.4	0.3	0.0
Chicken ²	0.270	4.4	1.0	-0.9	0.5	0.2
Fresh whole chicken ^{1, 3}		4.0	1.7	-1.8	2.2	1.7
Fresh and frozen chicken parts ^{1, 3}		4.8	0.6	-0.7	-0.1	0.6
Other poultry including turkey ²	0.077	3.4	-0.5	2.4	-0.5	-0.5
Fish and seafood ¹	0.300	2.3	3.0	-0.7	1.0	2.0
Fresh fish and seafood ^{1, 2}	0.156	3.0	2.6	-0.8	1.7	2.6
Processed fish and seafood ²	0.144	1.5	3.4	-1.1	0.8	2.0
Shelf stable fish and seafood ^{1, 3}		2.2	2.9	-0.1	-2.3	2.9

See footnotes at end of table.

Table 2. Consumer Price Index for All Urban Consumers (CPI-U): U.S. city average, by detailed expenditure category, April 2013 — Continued
 [1982-84=100, unless otherwise noted]

Expenditure category	Relative importance Mar. 2013	Unadjusted percent change		Seasonally adjusted percent change		
		Apr. 2012- Apr. 2013	Mar. 2013- Apr. 2013	Jan. 2013- Feb. 2013	Feb. 2013- Mar. 2013	Mar. 2013- Apr. 2013
Frozen fish and seafood ^{1, 3}		0.1	4.7	-4.2	1.1	4.7
Eggs.....	0.109	3.1	1.0	3.2	0.1	1.7
Dairy and related products ¹	0.887	0.6	0.0	-0.4	-0.6	0.0
Milk ^{1, 2}	0.291	1.8	-0.4	-0.6	-0.4	-0.4
Fresh whole milk ^{1, 3}		2.4	0.0	-0.2	-1.2	0.0
Fresh milk other than whole ^{1, 2, 3}		1.5	-0.5	-0.8	0.0	-0.5
Cheese and related products ¹	0.282	0.4	-0.2	0.2	-0.6	-0.3
Ice cream and related products.....	0.134	-0.6	0.3	0.1	-0.6	-0.2
Other dairy and related products ²	0.180	-0.2	0.9	-1.2	-0.7	1.6
Fruits and vegetables.....	1.281	2.1	-1.3	1.4	-0.4	-1.4
Fresh fruits and vegetables.....	0.982	2.9	-1.6	1.8	-0.4	-1.9
Fresh fruits.....	0.504	1.4	-0.5	1.8	-0.3	-1.5
Apples.....	0.092	10.3	-1.1	-0.6	0.9	-1.3
Bananas.....	0.080	-2.4	-2.1	-1.8	1.0	-1.9
Citrus fruits ²	0.104	1.3	2.0	-0.5	1.8	0.1
Oranges, including tangerines ³		2.7	0.3	-0.3	1.2	-1.5
Other fresh fruits ²	0.228	-0.5	-0.9	6.5	-1.8	-2.3
Fresh vegetables.....	0.478	4.6	-2.7	1.8	-0.4	-2.3
Potatoes.....	0.074	-8.6	1.2	-0.3	-2.9	1.8
Lettuce.....	0.072	14.8	-10.0	8.5	-2.4	-7.6
Tomatoes ¹	0.082	6.7	-3.4	-4.7	2.6	-3.4
Other fresh vegetables.....	0.251	6.1	-1.6	0.8	2.0	-0.8
Processed fruits and vegetables ²	0.299	-0.5	-0.3	0.2	-0.3	0.0
Canned fruits and vegetables ²	0.150	-0.8	-0.6	-0.3	-0.4	0.0
Canned fruits ^{2, 3}		2.6	-0.9	0.2	0.5	-0.6
Canned vegetables ^{2, 3}		-3.2	-0.4	-0.5	-0.9	0.1
Frozen fruits and vegetables ²	0.094	0.0	0.0	0.3	-0.1	0.5
Frozen vegetables ³		-0.2	0.2	0.8	-0.5	0.7
Other processed fruits and vegetables including dried ²	0.056	-0.7	0.0	0.2	-0.7	0.2
Dried beans, peas, and lentils ^{1, 2, 3}		-3.9	-2.1	-1.5	0.2	-2.1
Nonalcoholic beverages and beverage materials.....	0.933	-0.2	0.0	0.0	-0.2	0.3
Juices and nonalcoholic drinks ²	0.702	0.9	0.3	0.1	0.0	0.6
Carbonated drinks.....	0.287	1.1	0.4	-0.7	0.6	1.0
Frozen noncarbonated juices and drinks ^{1, 2}	0.013	-1.7	0.4	-1.1	-0.1	0.4
Nonfrozen noncarbonated juices and drinks ^{1, 2}	0.401	0.8	0.2	-0.4	-0.1	0.2
Beverage materials including coffee and tea ²	0.232	-3.5	-0.7	0.0	-0.7	-0.8
Coffee.....	0.139	-6.3	-1.6	0.1	-1.4	-2.1
Roasted coffee ³		-6.8	-1.8	0.2	-1.4	-2.3
Instant and freeze dried coffee ^{1, 3}		-5.4	-3.3	0.2	-1.2	-3.3
Other beverage materials including tea ²	0.093	0.9	0.5	-0.6	0.0	1.1
Other food at home.....	2.254	0.6	0.4	-0.6	0.2	0.4
Sugar and sweets ¹	0.299	-1.8	-0.1	-1.3	0.1	-0.1
Sugar and artificial sweeteners.....	0.057	-4.0	0.1	-1.2	-0.8	0.7
Candy and chewing gum ^{1, 2}	0.180	-2.0	-0.6	-1.6	0.7	-0.6
Other sweets ²	0.063	1.2	1.2	0.2	-0.7	1.3
Fats and oils.....	0.257	-0.8	-0.1	-1.1	-0.3	0.5
Butter and margarine ²	0.075	1.8	-0.5	0.7	0.7	0.3
Butter ³		3.2	-0.1	1.5	0.2	1.4
Margarine ³		-0.7	-1.4	1.1	0.8	-0.1
Salad dressing ^{1, 2}	0.064	-2.6	-0.6	-1.0	-1.0	-0.6
Other fats and oils including peanut butter ²	0.119	-1.3	0.5	-2.7	-0.6	1.1
Peanut butter ^{1, 2, 3}		-3.8	0.1	-2.4	-2.3	0.1
Other foods.....	1.698	1.3	0.6	-0.4	0.3	0.5

See footnotes at end of table.

Table 2. Consumer Price Index for All Urban Consumers (CPI-U): U.S. city average, by detailed expenditure category, April 2013 — Continued
 [1982-84=100, unless otherwise noted]

Expenditure category	Relative importance Mar. 2013	Unadjusted percent change		Seasonally adjusted percent change		
		Apr. 2012-Apr. 2013	Mar. 2013-Apr. 2013	Jan. 2013-Feb. 2013	Feb. 2013-Mar. 2013	Mar. 2013-Apr. 2013
Soups.....	0.098	2.3	3.0	-0.1	0.4	2.6
Frozen and freeze dried prepared foods ¹	0.295	-1.4	-0.1	-0.8	0.7	-0.1
Snacks ¹	0.330	3.7	-0.2	1.6	1.0	-0.2
Spices, seasonings, condiments, sauces.....	0.283	0.4	1.1	-0.8	-0.4	2.1
Salt and other seasonings and spices ^{2, 3}		-2.4	0.2	-1.1	-0.7	0.4
Olives, pickles, relishes ^{1, 2, 3}		0.6	0.8	-0.2	2.3	0.8
Sauces and gravies ^{2, 3}		0.7	1.1	-0.9	0.0	1.1
Other condiments ^{1, 3}		3.4	1.8	-0.1	-1.0	1.8
Baby food ^{1, 2}	0.072	2.3	0.0	-0.3	0.7	0.0
Other miscellaneous foods ^{1, 2}	0.620	1.5	0.9	-0.6	0.3	0.9
Prepared salads ^{1, 3, 4}		5.3	0.3	1.1	0.6	0.3
Food away from home ¹	5.660	2.3	0.3	0.1	0.2	0.3
Full service meals and snacks ^{1, 2}	2.688	2.5	0.4	0.2	0.2	0.4
Limited service meals and snacks ^{1, 2}	2.268	2.0	0.3	0.0	0.2	0.3
Food at employee sites and schools ²	0.261	3.5	0.2	0.3	0.3	0.3
Food at elementary and secondary schools ^{1, 3, 5}		3.7	0.1	0.1	0.0	0.1
Food from vending machines and mobile vendors ^{1, 2}	0.082	3.0	-0.1	0.4	0.3	-0.1
Other food away from home ^{1, 2}	0.360	2.4	0.4	0.0	0.4	0.4
Energy.....	10.081	-4.3	-1.9	5.4	-2.6	-4.3
Energy commodities.....	6.346	-8.1	-3.6	8.6	-4.1	-7.9
Fuel oil and other fuels ¹	0.334	-6.2	-3.3	2.4	-1.3	-3.3
Fuel oil ¹	0.232	-5.6	-4.4	3.1	-2.1	-4.4
Propane, kerosene, and firewood ^{1, 6}	0.101	-7.4	-0.6	0.8	0.5	1.5
Motor fuel.....	6.013	-8.2	-3.6	9.0	-4.2	-8.1
Gasoline (all types).....	5.819	-8.3	-3.7	9.1	-4.4	-8.1
Gasoline, unleaded regular ³		-8.7	-3.8	9.3	-4.4	-8.4
Gasoline, unleaded midgrade ^{3, 7}		-7.6	-3.5	9.1	-4.3	-7.8
Gasoline, unleaded premium ³		-6.8	-3.3	8.3	-4.1	-7.5
Other motor fuels ²	0.193	-4.7	-3.1	3.7	-4.0	-6.3
Energy services ⁸	3.735	2.6	1.0	0.5	-0.2	1.4
Electricity ⁸	2.840	1.1	0.4	0.3	-0.6	0.5
Utility (piped) gas service ⁸	0.895	7.6	2.9	1.2	1.0	4.4
All items less food and energy.....	75.746	1.7	0.1	0.2	0.1	0.1
Commodities less food and energy commodities.....	19.482	-0.1	0.2	0.0	-0.1	0.0
Household furnishings and supplies ⁹	3.264	-1.1	0.0	0.2	-0.3	0.0
Window and floor coverings and other linens ^{1, 2}	0.259	-4.6	-0.1	-0.7	-1.0	-0.1
Floor coverings ^{1, 2}	0.037	-4.4	-1.2	-0.7	-0.3	-1.2
Window coverings ^{1, 2}	0.076	1.7	-0.1	1.4	0.1	-0.1
Other linens ^{1, 2}	0.146	-7.6	0.1	-1.8	-1.7	0.1
Furniture and bedding ¹	0.704	-0.5	0.0	0.4	0.3	0.0
Bedroom furniture ¹	0.229	-1.6	-0.9	0.3	0.8	-0.9
Living room, kitchen, and dining room furniture ^{1, 2}	0.338	0.3	0.2	0.8	0.9	0.2
Other furniture ²	0.130	-0.6	1.2	-1.3	-3.8	1.6
Infants' furniture ^{1, 3, 5}						
Appliances ²	0.282	-1.6	-0.5	-0.9	-0.3	-0.6
Major appliances ²	0.164	-1.2	-0.5	-0.8	0.3	-1.0
Laundry equipment ³		-1.2	-0.4	-1.4	-0.2	-0.5
Other appliances ^{1, 2}	0.115	-2.0	-0.3	-0.1	-1.3	-0.3
Other household equipment and furnishings ²	0.473	-3.0	-0.4	-0.7	-0.7	-0.6
Clocks, lamps, and decorator items ¹	0.242	-6.0	-0.9	-0.7	-2.3	-0.9
Indoor plants and flowers ¹⁰	0.102	1.2	-0.6	0.5	0.4	0.1
Dishes and flatware ^{1, 2}	0.047	-0.4	0.0	0.0	-0.7	0.0
Nonelectric cookware and tableware ²	0.082	-0.5	0.8	-0.2	-1.5	0.4

See footnotes at end of table.

Table 2. Consumer Price Index for All Urban Consumers (CPI-U): U.S. city average, by detailed expenditure category, April 2013 — Continued
 [1982-84=100, unless otherwise noted]

Expenditure category	Relative importance Mar. 2013	Unadjusted percent change		Seasonally adjusted percent change		
		Apr. 2012-Apr. 2013	Mar. 2013-Apr. 2013	Jan. 2013-Feb. 2013	Feb. 2013-Mar. 2013	Mar. 2013-Apr. 2013
Tools, hardware, outdoor equipment and supplies ² . . .	0.669	0.0	0.6	0.3	-0.6	0.3
Tools, hardware and supplies ¹ · ²	0.171	1.4	0.7	0.8	0.0	0.7
Outdoor equipment and supplies ²	0.354	-0.6	0.6	-0.1	-0.7	0.5
Housekeeping supplies ¹	0.877	-0.1	-0.2	0.3	0.0	-0.2
Household cleaning products ¹ · ²	0.353	-0.6	-0.3	0.4	-0.4	-0.3
Household paper products ¹ · ²	0.242	1.7	-0.2	0.2	0.7	-0.2
Miscellaneous household products ¹ · ²	0.282	-0.8	-0.1	0.2	-0.2	-0.1
Apparel	3.588	0.3	0.5	-0.1	-1.0	-0.3
Men's and boys' apparel	0.860	1.8	2.4	-0.6	-0.7	1.1
Men's apparel	0.683	3.3	3.2	-0.6	-0.8	2.1
Men's suits, sport coats, and outerwear	0.127	5.5	2.5	3.8	-2.1	1.3
Men's furnishings	0.182	6.3	3.8	0.8	-3.8	3.3
Men's shirts and sweaters ²	0.209	1.1	3.8	-2.0	1.6	0.7
Men's pants and shorts	0.158	1.3	2.1	-4.4	-0.9	2.8
Boys' apparel	0.177	-3.9	-0.4	-0.7	-0.4	-0.1
Women's and girls' apparel	1.525	-1.4	-0.5	-0.1	-1.5	-1.1
Women's apparel	1.288	-0.3	-0.1	1.3	-0.9	-1.3
Women's outerwear	0.091	4.0	0.5	2.3	-0.2	0.8
Women's dresses	0.176	-2.6	0.4	-1.3	-0.9	0.7
Women's suits and separates ²	0.617	-0.1	-0.6	3.8	-1.1	-2.3
Women's underwear, nightwear, sportswear and accessories ²	0.388	-0.4	0.2	-0.5	-1.4	0.0
Girls' apparel	0.237	-7.5	-2.5	-6.8	-4.1	-0.4
Footwear	0.691	3.2	0.8	0.4	-0.7	0.0
Men's footwear ¹	0.214	3.3	0.0	1.4	-0.7	0.0
Boys' and girls' footwear	0.151	2.7	0.6	1.2	-1.0	0.5
Women's footwear	0.326	3.4	1.5	-0.6	-0.4	0.5
Infants' and toddlers' apparel	0.194	-2.2	-0.9	0.5	-2.3	-1.3
Jewelry and watches ⁶	0.318	0.0	-0.3	-0.1	0.1	-0.8
Watches ¹ · ⁶	0.091	2.9	-0.6	1.1	0.4	-0.6
Jewelry ⁶	0.227	-1.2	-0.1	-0.4	0.1	-0.6
Transportation commodities less motor fuel ⁹	5.520	0.4	0.4	0.1	0.4	0.3
New vehicles	3.163	1.2	0.1	-0.3	0.1	0.3
New cars and trucks ² · ³		1.2	0.1	-0.3	0.0	0.3
New cars ³		0.9	0.1	-0.3	0.1	0.2
New trucks ³ · ¹¹		1.5	0.3	-0.2	0.2	0.5
Used cars and trucks	1.863	-0.6	0.9	0.8	1.2	0.6
Motor vehicle parts and equipment ¹	0.426	-0.7	-0.5	-0.2	0.2	-0.5
Tires ¹	0.287	-2.2	-0.7	-0.3	0.1	-0.7
Vehicle accessories other than tires ¹ · ²	0.139	2.3	0.1	0.1	0.3	0.1
Vehicle parts and equipment other than tires ¹ · ³		2.9	-0.2	0.0	0.7	-0.2
Motor oil, coolant, and fluids ¹ · ³		0.8	1.4	0.0	-1.0	1.4
Medical care commodities	1.704	0.7	0.0	-0.4	0.1	0.1
Medicinal drugs ¹ · ⁹	1.625	0.6	0.0	0.1	0.3	0.0
Prescription drugs	1.319	0.6	-0.1	-0.3	0.3	-0.1
Nonprescription drugs ¹ · ⁹	0.307	0.8	0.7	-0.6	0.2	0.7
Medical equipment and supplies ¹ · ⁹	0.078	1.6	0.2	0.0	-0.1	0.2
Recreation commodities ⁹	2.243	-1.5	0.0	0.1	0.0	-0.1
Video and audio products ⁹	0.384	-8.4	-1.1	-0.6	-1.0	-1.5
Televisions	0.138	-17.4	-2.4	-2.2	-2.1	-3.5
Other video equipment ¹ · ²	0.025	-6.7	0.8	0.1	1.6	0.8
Audio equipment ¹	0.067	-6.2	-1.2	0.5	-2.9	-1.2
Audio discs, tapes and other media ¹ · ²	0.043	-0.9	0.1	-1.5	0.5	0.1

See footnotes at end of table.

Table 2. Consumer Price Index for All Urban Consumers (CPI-U): U.S. city average, by detailed expenditure category, April 2013 — Continued
 [1982-84=100, unless otherwise noted]

Expenditure category	Relative importance Mar. 2013	Unadjusted percent change		Seasonally adjusted percent change		
		Apr. 2012- Apr. 2013	Mar. 2013- Apr. 2013	Jan. 2013- Feb. 2013	Feb. 2013- Mar. 2013	Mar. 2013- Apr. 2013
Pets and pet products ¹	0.685	1.2	0.3	0.5	0.3	0.3
Pet food ^{1, 2, 3}		2.9	0.2	0.5	0.7	0.2
Purchase of pets, pet supplies, accessories ^{1, 2, 3}		-1.9	0.4	0.2	-0.3	0.4
Sporting goods ¹	0.452	-0.2	0.3	0.1	-0.4	0.3
Sports vehicles including bicycles ¹	0.241	3.0	0.9	-0.1	-0.2	0.9
Sports equipment	0.201	-3.9	-0.3	0.0	-1.2	-0.4
Photographic equipment and supplies	0.051	-5.8	-1.6	3.2	2.1	-3.1
Film and photographic supplies ^{1, 2, 3}						
Photographic equipment ^{2, 3}		-7.1	-1.9	3.2	2.1	-4.2
Recreational reading materials ¹	0.228	3.9	0.2	0.0	0.5	0.2
Newspapers and magazines ^{1, 2}	0.127	7.2	0.3	-0.3	0.3	0.3
Recreational books ^{1, 2}	0.097	-0.2	0.0	0.5	0.9	0.0
Other recreational goods ²	0.444	-2.8	0.4	0.0	0.0	0.4
Toys ¹	0.325	-4.1	0.3	0.0	-0.4	0.3
Toys, games, hobbies and playground equipment ²						
.....		-1.0	0.5	-0.6	0.0	1.0
Sewing machines, fabric and supplies ^{1, 2}	0.060	1.8	0.6	-0.1	1.8	0.6
Music instruments and accessories ²	0.039	2.4	0.1	0.0	0.7	0.1
Education and communication commodities ⁹	0.576	-2.6	-0.6	-0.1	-0.3	-0.6
Educational books and supplies	0.212	6.9	0.0	0.0	0.7	0.5
College textbooks ^{1, 3, 12}		7.5	0.1	0.1	0.4	0.1
Information technology commodities ⁹	0.365	-7.4	-1.0	-0.1	-0.8	-1.3
Personal computers and peripheral equipment ⁴	0.238	-8.3	-0.8	-0.5	-0.7	-1.3
Computer software and accessories ^{1, 2}	0.044	-7.3	-1.4	0.3	-1.4	-1.4
Telephone hardware, calculators, and other consumer information items ^{1, 2}	0.083	-4.9	-1.0	0.7	-0.8	-1.0
Alcoholic beverages	0.946	1.8	0.1	0.4	0.2	0.2
Alcoholic beverages at home	0.569	1.3	-0.1	0.2	0.4	0.1
Beer, ale, and other malt beverages at home	0.272	1.4	-0.2	0.1	0.1	0.0
Distilled spirits at home ¹	0.072	0.9	-0.6	0.2	1.0	-0.6
Whiskey at home ³		1.2	-0.5	0.1	0.1	-0.2
Distilled spirits, excluding whiskey, at home ^{1, 3}		0.3	-0.6	0.7	0.5	-0.6
Wine at home	0.226	1.3	0.1	0.4	0.2	0.5
Alcoholic beverages away from home ¹	0.377	2.6	0.4	0.4	-0.1	0.4
Beer, ale, and other malt beverages away from home ^{1, 2, 3}		2.7	0.5	0.2	0.0	0.5
Wine away from home ^{1, 2, 3}		2.2	-0.1	1.0	-0.4	-0.1
Distilled spirits away from home ^{1, 2, 3}		3.2	0.7	0.4	0.2	0.7
Other goods ⁹	1.641	0.9	0.2	-0.1	0.3	0.2
Tobacco and smoking products ¹	0.795	2.6	0.6	-0.2	-0.2	0.6
Cigarettes ^{1, 2}	0.735	2.6	0.6	-0.3	-0.2	0.6
Tobacco products other than cigarettes ^{1, 2}	0.054	2.1	0.3	0.5	0.5	0.3
Personal care products ¹	0.643	-0.7	-0.4	0.1	1.2	-0.4
Hair, dental, shaving, and miscellaneous personal care products ^{1, 2}	0.335	-1.2	-0.5	0.0	1.2	-0.5
Cosmetics, perfume, bath, nail preparations and implements ¹	0.301	-0.1	-0.3	0.3	1.2	-0.3
Miscellaneous personal goods ²	0.202	-0.2	0.5	-0.4	-0.3	0.6
Stationery, stationery supplies, gift wrap ³		0.3	0.5	-0.1	-0.1	0.7
Infants' equipment ^{1, 3, 5}		-2.8	0.2	0.2	0.9	0.2
Services less energy services	56.263	2.3	0.0	0.2	0.2	0.1
Shelter	31.494	2.2	0.1	0.2	0.2	0.2
Rent of shelter ¹³	31.141	2.2	0.1	0.2	0.2	0.2
Rent of primary residence ⁸	6.498	2.7	0.1	0.3	0.2	0.2
Lodging away from home ²	0.813	1.7	0.3	0.3	0.5	0.3

See footnotes at end of table.

Table 2. Consumer Price Index for All Urban Consumers (CPI-U): U.S. city average, by detailed expenditure category, April 2013 — Continued
 [1982-84=100, unless otherwise noted]

Expenditure category	Relative importance Mar. 2013	Unadjusted percent change		Seasonally adjusted percent change		
		Apr. 2012-Apr. 2013	Mar. 2013-Apr. 2013	Jan. 2013-Feb. 2013	Feb. 2013-Mar. 2013	Mar. 2013-Apr. 2013
Housing at school, excluding board ^{8, 13}	0.157	4.2	0.0	0.2	0.4	0.3
Other lodging away from home including hotels and motels.....	0.656	1.1	0.3	0.3	0.5	0.4
Owners' equivalent rent of residences ^{8, 13}	23.831	2.1	0.2	0.2	0.1	0.2
Owners' equivalent rent of primary residence ^{8, 13}	22.424	2.1	0.2	0.2	0.1	0.2
Tenants' and household insurance ^{1, 2}	0.353	2.4	-1.0	1.1	0.0	-1.0
Water and sewer and trash collection services ²	1.201	4.7	0.2	0.3	0.4	0.2
Water and sewerage maintenance ⁸	0.911	5.2	0.1	0.3	0.5	0.2
Garbage and trash collection ^{1, 11}	0.290	3.2	0.3	0.2	0.1	0.3
Household operations ^{1, 2}	0.724	0.9	-0.4	0.2	0.2	-0.4
Domestic services ^{1, 2}	0.248	1.3	0.2	-0.1	0.2	0.2
Gardening and lawncare services ^{1, 2}	0.236	-0.1				
Moving, storage, freight expense ^{1, 2}	0.089	0.0	0.1	-0.2	0.4	0.1
Repair of household items ^{1, 2}	0.078	3.7	-0.3	0.0	0.2	-0.3
Medical care services.....	5.454	3.4	-0.1	0.3	0.3	-0.1
Professional services.....	3.001	2.7	0.2	0.1	0.4	0.3
Physicians' services ⁸	1.606	2.7	0.3	0.0	0.2	0.4
Dental services ⁸	0.771	3.8	0.2	0.3	0.6	0.2
Eyeglasses and eye care ^{1, 6}	0.247	0.6	0.4	0.4	0.1	0.4
Services by other medical professionals ^{8, 6}	0.376	1.5	0.0	0.1	0.3	0.0
Hospital and related services.....	1.795	4.0	-0.7	0.7	0.4	-0.6
Hospital services ^{8, 14}	1.572	4.3	-0.8	0.8	0.4	-0.7
Inpatient hospital services ^{8, 14, 3}		4.0	-0.8	1.0	0.3	-0.9
Outpatient hospital services ^{8, 3, 6}		4.5	-0.7	0.7	0.4	-0.5
Nursing homes and adult day services ^{8, 14}	0.138	3.1	0.0	0.0	0.7	0.0
Care of invalids and elderly at home ^{1, 5}	0.085	1.0	0.1	0.0	0.1	0.1
Health insurance ^{1, 5}	0.658	5.3	-0.2	0.8	0.2	-0.2
Transportation services.....	5.808	2.5	0.1	0.1	0.2	-0.2
Leased cars and trucks ¹²	0.370	-4.1	-0.5	0.6	-1.0	-0.8
Car and truck rental ²	0.070	1.4	-1.0	-0.7	-1.0	-1.5
Motor vehicle maintenance and repair ¹	1.140	1.5	0.1	0.2	0.0	0.1
Motor vehicle body work ¹	0.057	2.3	0.3	0.2	0.2	0.3
Motor vehicle maintenance and servicing ¹	0.456	1.6	0.0	0.1	-0.1	0.0
Motor vehicle repair ^{1, 2}	0.591	1.3	0.1	0.2	0.0	0.1
Motor vehicle insurance.....	2.466	4.4	-0.1	0.2	0.1	0.0
Motor vehicle fees ^{1, 2}	0.559	1.5	0.0	0.1	0.2	0.0
State motor vehicle registration and license fees ^{1, 8, 2}	0.322	0.4	0.0	0.0	0.0	0.0
Parking and other fees ^{1, 2}	0.215	3.0	-0.1	0.3	0.4	-0.1
Parking fees and tolls ^{1, 2, 3}		3.7	-0.1	0.2	0.5	-0.1
Automobile service clubs ^{1, 2, 3}		1.4	0.0	0.2	-0.2	0.0
Public transportation.....	1.203	2.6	0.7	-0.4	1.1	-0.4
Airline fare.....	0.785	1.9	1.1	-0.3	0.6	-0.7
Other intercity transportation.....	0.148	1.1	-0.2	-1.1	1.1	-1.0
Intercity bus fare ^{1, 3, 4}						
Intercity train fare ^{3, 4}		7.4	-0.9	-5.0	9.6	-2.8
Ship fare ^{1, 2, 3}		-1.3	0.1	-0.2	-0.3	0.1
Intracity transportation ¹	0.268	5.5	0.1	0.1	2.8	0.1
Intracity mass transit ^{1, 3, 9}		5.8	0.1	0.1	3.2	0.1
Recreation services ⁹	3.714	2.0	0.0	0.3	-0.1	-0.1
Video and audio services ⁹	1.520	2.6	0.0	0.5	0.3	0.0
Cable and satellite television and radio service ¹¹ ..	1.411	3.0	0.1	0.4	0.4	0.0

See footnotes at end of table.

Table 2. Consumer Price Index for All Urban Consumers (CPI-U): U.S. city average, by detailed expenditure category, April 2013 — Continued
 [1982-84=100, unless otherwise noted]

Expenditure category	Relative importance Mar. 2013	Unadjusted percent change		Seasonally adjusted percent change		
		Apr. 2012- Apr. 2013	Mar. 2013- Apr. 2013	Jan. 2013- Feb. 2013	Feb. 2013- Mar. 2013	Mar. 2013- Apr. 2013
Video discs and other media, including rental of video and audio ^{1, 2}	0.108	-3.4	-1.1	1.5	-0.3	-1.1
Video discs and other media ^{1, 2, 3}		-5.4	-0.7	1.8	-0.6	-0.7
Rental of video or audio discs and other media ^{1, 2, 3}		-3.1	-0.9	0.7	-0.3	-0.9
Pet services including veterinary ²	0.409	2.5	0.5	0.0	0.2	0.3
Pet services ^{1, 2, 3}		2.7	1.0	-0.1	0.2	1.0
Veterinarian services ^{2, 3}		2.6	0.5	-0.1	0.1	0.3
Photographers and film processing ^{1, 2}	0.057	0.8	0.6	-0.3	0.0	0.6
Photographer fees ^{1, 2, 3}		0.1	0.1	-0.2	-0.1	0.1
Film processing ^{1, 2, 3}		0.9	0.3	0.3	-0.1	0.3
Other recreation services ²	1.727	1.4	-0.3	0.3	-0.6	-0.3
Club dues and fees for participant sports and group exercises ²	0.564	1.2	0.2	1.1	-0.8	0.2
Admissions ¹	0.629	1.3	-0.7	-0.6	-0.2	-0.7
Admission to movies, theaters, and concerts ^{1, 2, 3}		1.2	-0.8	-0.6	-0.3	-0.8
Admission to sporting events ^{1, 2, 3}		2.1	-0.5	-0.5	-0.1	-0.5
Fees for lessons or instructions ^{1, 6}	0.231	2.3	-0.2	0.7	-0.9	-0.2
Education and communication services ⁹	6.157	1.9	-0.3	0.4	0.3	-0.1
Tuition, other school fees, and childcare	3.039	3.9	0.0	0.3	0.3	0.3
College tuition and fees	1.715	4.6	0.0	0.4	0.4	0.4
Elementary and high school tuition and fees	0.384	3.5	0.0	0.3	0.3	0.3
Child care and nursery school ¹⁰	0.777	2.7	0.0	0.1	0.2	0.1
Technical and business school tuition and fees ²	0.059	3.1	0.1	0.1	0.4	0.1
Postage and delivery services ²	0.156	6.3	0.1	4.5	0.2	0.1
Postage ¹	0.145	6.4	0.0	4.9	0.1	0.0
Delivery services ^{1, 2}	0.011	4.6	1.5	-0.3	0.7	1.5
Telephone services ^{1, 2}	2.366	-0.6	-0.6	0.0	-0.1	-0.6
Wireless telephone services ^{1, 2}	1.420	-2.3	-1.0	-0.3	-0.1	-1.0
Land-line telephone services ^{1, 9}	0.947	1.9	-0.1	0.4	0.0	-0.1
Internet services and electronic information providers ^{1, 2}	0.582	0.6	-0.3	1.3	1.3	-0.3
Other personal services ^{1, 9}	1.710	2.6	0.3	0.5	0.1	0.3
Personal care services ¹	0.628	1.9	0.2	0.1	0.2	0.2
Haircuts and other personal care services ^{1, 2}	0.628	1.9	0.2	0.1	0.2	0.2
Miscellaneous personal services	1.082	2.9	0.4	0.6	0.1	0.1
Legal services ⁶	0.297	2.8	0.0	1.2	0.2	0.0
Funeral expenses ⁶	0.159	2.4	0.0	0.2	0.0	0.0
Laundry and dry cleaning services ^{1, 2}	0.239	2.3	0.1	-0.3	0.1	0.1
Apparel services other than laundry and dry cleaning ^{1, 2}	0.030	3.5	-0.4	0.2	1.1	-0.4
Financial services ^{1, 6}	0.215	4.2	1.4	1.7	0.2	1.4

See footnotes at end of table.

Table 2. Consumer Price Index for All Urban Consumers (CPI-U): U.S. city average, by detailed expenditure category, April 2013 — Continued
 [1982-84=100, unless otherwise noted]

Expenditure category	Relative importance Mar. 2013	Unadjusted percent change		Seasonally adjusted percent change		
		Apr. 2012- Apr. 2013	Mar. 2013- Apr. 2013	Jan. 2013- Feb. 2013	Feb. 2013- Mar. 2013	Mar. 2013- Apr. 2013
Checking account and other bank services ^{1, 2, 3}		3.0	0.0	0.0	0.0	0.0
Tax return preparation and other accounting fees ^{2, 3}		2.5	1.8	1.2	0.2	1.8

1 Not seasonally adjusted.

2 Indexes on a December 1997=100 base.

3 Special index based on a substantially smaller sample.

4 Indexes on a December 2007=100 base.

5 Indexes on a December 2005=100 base.

6 Indexes on a December 1986=100 base.

7 Indexes on a December 1993=100 base.

8 This index series was calculated using a Laspeyres estimator. All other item stratum index series were calculated using a geometric means estimator.

9 Indexes on a December 2009=100 base.

10 Indexes on a December 1990=100 base.

11 Indexes on a December 1983=100 base.

12 Indexes on a December 2001=100 base.

13 Indexes on a December 1982=100 base.

14 Indexes on a December 1996=100 base.

NOTE: Index applies to a month as a whole, not to any specific date.

Table 3. Consumer Price Index for All Urban Consumers (CPI-U): U.S. city average, special aggregate indexes, April 2013

[1982-84=100, unless otherwise noted]

Special aggregate indexes	Relative importance Mar. 2013	Unadjusted indexes			Unadjusted percent change		Seasonally adjusted percent change		
		Apr. 2012	Mar. 2013	Apr. 2013	Apr. 2012-Apr. 2013	Mar. 2013-Apr. 2013	Jan. 2013-Feb. 2013	Feb. 2013-Mar. 2013	Mar. 2013-Apr. 2013
All items less food.....	85.827	229.621	232.243	231.880	1.0	-0.2	0.8	-0.2	-0.5
All items less shelter.....	68.506	222.552	224.241	223.774	0.5	-0.2	0.9	-0.3	-0.6
All items less food and shelter.....	54.332	219.503	220.846	220.141	0.3	-0.3	1.1	-0.5	-0.8
All items less food, shelter, and energy.....	44.251	214.770	217.621	217.723	1.4	0.0	0.1	0.1	0.0
All items less food, shelter, energy, and used cars and trucks.....	42.389	218.575	221.761	221.777	1.5	0.0	0.1	0.0	-0.1
All items less medical care.....	92.842	221.159	223.465	223.229	0.9	-0.1	0.7	-0.2	-0.4
All items less energy.....	89.919	229.252	232.889	233.123	1.7	0.1	0.2	0.1	0.1
Commodities.....	40.002	190.089	189.286	188.513	-0.8	-0.4	1.3	-0.7	-1.2
Commodities less food, energy, and used cars and trucks.....	17.620	148.483	148.337	148.494	0.0	0.1	-0.1	-0.3	0.0
Commodities less food.....	25.829	168.899	166.605	165.355	-2.1	-0.8	2.0	-1.1	-1.9
Commodities less food and beverages.....	24.883	166.479	164.031	162.746	-2.2	-0.8	2.1	-1.1	-2.0
Services.....	59.998	269.901	275.994	276.268	2.4	0.1	0.3	0.2	0.1
Services less rent of shelter ¹	28.857	294.527	301.825	301.999	2.5	0.1	0.4	0.1	0.1
Services less medical care services.....	54.544	257.121	262.602	262.919	2.3	0.1	0.2	0.1	0.1
Durables.....	8.694	113.306	112.269	112.460	-0.7	0.2	0.0	0.0	0.0
Nondurables.....	31.308	228.190	227.540	226.246	-0.9	-0.6	1.6	-1.0	-1.4
Nondurables less food.....	17.135	221.619	218.116	215.460	-2.8	-1.2	2.9	-1.6	-2.9
Nondurables less food and beverages.....	16.189	220.859	216.959	214.148	-3.0	-1.3	3.1	-1.8	-3.1
Nondurables less food, beverages, and apparel.....	12.601	283.379	277.105	272.136	-4.0	-1.8	4.0	-1.9	-4.0
Nondurables less food and apparel.....	13.547	277.443	272.032	267.516	-3.6	-1.7	3.7	-1.7	-3.7
Housing.....	40.753	221.682	225.643	225.986	1.9	0.2	0.2	0.1	0.2
Education and communication ²	6.733	133.284	135.625	135.230	1.5	-0.3	0.3	0.2	-0.2
Education ²	3.251	213.130	221.861	221.882	4.1	0.0	0.3	0.3	0.3
Communication ²	3.482	83.515	83.235	82.759	-0.9	-0.6	0.4	0.1	-0.6
Information and information processing ²	3.327	79.995	79.498	79.019	-1.2	-0.6	0.2	0.1	-0.6
Information technology, hardware and services ³	0.960	8.865	8.679	8.630	-2.7	-0.6	0.8	0.5	-0.7
Recreation ²	5.957	114.656	115.386	115.359	0.6	0.0	0.3	-0.1	-0.1
Video and audio ²	1.904	99.893	100.251	100.054	0.2	-0.2	0.2	0.1	-0.3
Pets, pet products and services ²	1.093	162.159	164.305	164.911	1.7	0.4	0.3	0.3	0.3
Photography ²	0.110	79.769	78.216	77.880	-2.4	-0.4	1.3	1.0	-1.1
Food and beverages.....	15.119	233.116	236.267	236.761	1.6	0.2	0.1	0.1	0.2
Domestically produced farm food.....	7.200	238.478	241.166	241.277	1.2	0.0	0.2	0.0	0.0
Other services.....	11.581	320.824	327.576	327.216	2.0	-0.1	0.4	0.1	-0.1
Apparel less footwear.....	2.897	123.018	122.104	122.544	-0.4	0.4	-0.2	-1.1	-0.4
Fuels and utilities.....	5.270	216.006	220.251	221.382	2.5	0.5	0.6	-0.1	0.9
Household energy.....	4.068	186.517	188.810	189.969	1.9	0.6	0.6	-0.3	1.0
Medical care.....	7.158	412.480	424.154	423.815	2.7	-0.1	0.2	0.3	0.0
Transportation.....	17.340	223.083	221.080	218.592	-2.0	-1.1	3.0	-1.3	-2.7
Private transportation.....	16.137	218.563	216.167	213.438	-2.3	-1.3	3.3	-1.5	-2.9
New and used motor vehicles ²	5.534	100.977	100.809	101.162	0.2	0.4	0.1	0.3	0.3
Utilities and public transportation.....	9.916	206.050	209.720	210.427	2.1	0.3	0.4	0.1	0.4
Household furnishings and operations.....	3.989	126.114	125.330	125.198	-0.7	-0.1	0.0	-0.3	-0.1
Other goods and services.....	3.351	393.320	399.265	400.239	1.8	0.2	0.1	0.1	0.2
Personal care.....	2.556	211.865	214.754	215.041	1.5	0.1	0.3	0.2	0.0

1 Indexes on a December 1982=100 base.

2 Indexes on a December 1997=100 base.

3 Indexes on a December 1988=100 base.

NOTE: Index applies to a month as a whole, not to any specific date.

Table 4. Consumer Price Index for All Urban Consumers (CPI-U): Selected areas, all items index, April 2013
 [1982-84=100, unless otherwise noted]

Area	Pricing Schedule ¹	Percent change to Apr. 2013 from:			Percent change to Mar. 2013 from:		
		Apr. 2012	Feb. 2013	Mar. 2013	Mar. 2012	Jan. 2013	Feb. 2013
U.S. city average.....	M	1.1	0.2	-0.1	1.5	1.1	0.3
Region and area size²							
Northeast urban.....	M	1.1	-0.1	-0.1	1.5	0.6	0.0
Size A - More than 1,500,000.....	M	1.3	0.0	-0.1	1.7	0.6	0.1
Size B/C - 50,000 to 1,500,000 ³	M	0.3	-0.2	0.0	0.6	0.4	-0.2
Midwest urban.....	M	1.2	0.1	-0.1	1.4	1.3	0.2
Size A - More than 1,500,000.....	M	1.3	0.1	-0.1	1.4	1.3	0.2
Size B/C - 50,000 to 1,500,000 ³	M	1.0	0.3	-0.1	1.3	1.4	0.4
Size D - Nonmetropolitan (less than 50,000).....	M	1.0	-0.2	-0.3	1.8	1.1	0.1
South urban.....	M	0.9	0.1	-0.2	1.5	1.2	0.3
Size A - More than 1,500,000.....	M	1.0	0.2	-0.1	1.4	1.2	0.3
Size B/C - 50,000 to 1,500,000 ³	M	0.9	0.1	-0.2	1.6	1.2	0.4
Size D - Nonmetropolitan (less than 50,000).....	M	0.4	0.0	-0.4	1.1	1.0	0.4
West urban.....	M	1.3	0.4	0.0	1.5	1.2	0.4
Size A - More than 1,500,000.....	M	1.5	0.3	-0.1	1.7	1.2	0.4
Size B/C - 50,000 to 1,500,000 ³	M	0.8	0.5	0.2	1.0	1.2	0.4
Size classes							
A ⁴	M	1.3	0.2	-0.1	1.6	1.1	0.2
B/C ³	M	0.8	0.2	-0.1	1.3	1.1	0.3
D.....	M	0.8	0.1	-0.3	1.5	1.0	0.4
Selected local areas⁵							
Chicago-Gary-Kenosha, IL-IN-WI.....	M	0.9	-0.1	0.0	0.9	1.0	-0.1
Los Angeles-Riverside-Orange County, CA.....	M	0.9	-0.3	-0.4	1.3	0.8	0.1
New York-Northern N.J.-Long Island, NY-NJ-CT-PA.....	M	1.4	-0.1	-0.2	1.9	0.7	0.1
Boston-Brockton-Nashua, MA-NH-ME-CT.....	1				1.5	0.4	
Cleveland-Akron, OH.....	1				1.0	0.9	
Dallas-Fort Worth, TX.....	1				1.8	1.3	
Washington-Baltimore, DC-MD-VA-WV ⁶	1				1.4	0.9	
Atlanta, GA.....	2	1.1	0.1				
Detroit-Ann Arbor-Flint, MI.....	2	1.3	0.0				
Houston-Galveston-Brazoria, TX.....	2	0.7	0.9				
Miami-Fort Lauderdale, FL.....	2	0.9	-0.2				
Philadelphia-Wilmington-Atlantic City, PA-NJ-DE-MD.....	2	1.1	0.1				
San Francisco-Oakland-San Jose, CA.....	2	2.4	0.8				
Seattle-Tacoma-Bremerton, WA.....	2	1.2	0.4				

1 Foods, fuels, and several other items are priced every month in all areas. Most other goods and services are priced as indicated: M - Every month. 1 - January, March, May, July, September, and November. 2 - February, April, June, August, October, and December.

2 Regions defined as the four Census regions.

3 Indexes on a December 1996=100 base.

4 Indexes on a December 1986=100 base.

5 In addition, the following metropolitan areas are published semiannually and appear in Tables 34 and 39 of the January and July issues of the CPI Detailed Report: Anchorage, AK; Cincinnati-Hamilton, OH-KY-IN; Denver-Boulder-Greeley, CO; Honolulu, HI; Kansas City, MO-KS; Milwaukee-Racine, WI; Minneapolis-St. Paul, MN-WI; Phoenix-Mesa, AZ; Pittsburgh, PA; Portland-Salem, OR-WA; St. Louis, MO-IL; San Diego, CA; Tampa-St. Petersburg-Clearwater, FL.

6 Indexes on a November 1996=100 base.

NOTE: Local area indexes are byproducts of the national CPI program. Each local index has a smaller sample size than the national index and is, therefore, subject to substantially more sampling and other measurement error. As a result, local area indexes show greater volatility than the national index, although their long-term trends are similar. Therefore, the Bureau of Labor Statistics strongly urges users to consider adopting the national average CPI for use in their escalator clauses.

NOTE: Index applies to a month as a whole, not to any specific date.

Table 5. Chained Consumer Price Index for All Urban Consumers (C-CPI-U) and the Consumer Price Index for All Urban Consumers (CPI-U): U.S. city average, all items index, April 2013
 [Percent changes]

Month Year	Unadjusted 1-month percent change		Unadjusted 12-month percent change	
	C-CPI-U ¹	CPI-U	C-CPI-U ¹	CPI-U
December 2000.....			2.6	3.4
December 2001.....			1.3	1.6
December 2002.....			2.0	2.4
December 2003.....			1.7	1.9
December 2004.....			3.2	3.3
December 2005.....			2.9	3.4
December 2006.....			2.3	2.5
December 2007.....			3.7	4.1
December 2008.....			0.2	0.1
December 2009.....			2.5	2.7
December 2010.....			1.3	1.5
January 2011.....	0.5	0.5	1.4	1.6
February 2011.....	0.5	0.5	1.9	2.1
March 2011.....	1.0	1.0	2.5	2.7
April 2011.....	0.7	0.6	3.1	3.2
May 2011.....	0.4	0.5	3.4	3.6
June 2011.....	-0.1	-0.1	3.4	3.6
July 2011.....	0.1	0.1	3.5	3.6
August 2011.....	0.3	0.3	3.7	3.8
September 2011.....	0.2	0.2	3.8	3.9
October 2011.....	-0.2	-0.2	3.5	3.5
November 2011.....	-0.1	-0.1	3.4	3.4
December 2011.....	-0.3	-0.2	2.9	3.0
January 2012.....	0.4	0.4	2.8	2.9
February 2012.....	0.4	0.4	2.7	2.9
March 2012.....	0.6	0.8	2.4	2.7
April 2012.....	0.3	0.3	1.9	2.3
May 2012.....	-0.1	-0.1	1.5	1.7
June 2012.....	-0.1	-0.1	1.5	1.7
July 2012.....	-0.2	-0.2	1.3	1.4
August 2012.....	0.4	0.6	1.4	1.7
September 2012.....	0.4	0.4	1.6	2.0
October 2012.....	0.0	0.0	1.8	2.2
November 2012.....	-0.4	-0.5	1.5	1.8
December 2012.....	-0.2	-0.3	1.6	1.7
January 2013.....	0.3	0.3	1.5	1.6
February 2013.....	0.7	0.8	1.8	2.0
March 2013.....	0.2	0.3	1.4	1.5
April 2013.....	-0.1	-0.1	1.1	1.1

¹ The C-CPI-U is designed to be a closer approximation to a cost-of-living index in that it, in its final form, accounts for any substitution that consumers make across item categories in response to changes in relative prices. Since the expenditure data required for the calculation of the C-CPI-U are available only with a time lag, the C-CPI-U is being issued first in preliminary form using the latest available expenditure data at that time and is subject to two revisions.

NOTE: Indexes for 2013 are initial estimates. Indexes for 2012 are interim adjustments. Data prior to 2012 are final.

NOTE: Index applies to a month as a whole, not to any specific date.

Table 6. Consumer Price Index for All Urban Consumers (CPI-U): U.S. city average, by expenditure category, April 2013, 1-month analysis table
 [1982-84=100, unless otherwise noted]

Expenditure category	Relative importance Mar. 2013	One Month				
		Seasonally adjusted percent change Mar. 2013-Apr. 2013	Seasonally adjusted effect on All Items Mar. 2013-Apr. 2013 ¹	Standard error, median price change ²	Largest (L) or Smallest (S) seasonally adjusted change since: ³	
					Date	Percent change
All items.....	100.000	-0.4		0.04	S-Dec.2008	-0.8
Food.....	14.173	0.2	0.028	0.08	L-Dec.2012	0.2
Food at home.....	8.513	0.1	0.009	0.12	L-Feb.2013	0.1
Cereals and bakery products.....	1.220	0.6	0.008	0.30	L-Sep.2011	0.8
Cereals and cereal products.....	0.463	0.3	0.002	0.45	L-Feb.2013	0.7
Flour and prepared flour mixes.....	0.052	2.7	0.001	0.73	L-May 2011	2.9
Breakfast cereal ⁴	0.284	0.6	0.002	0.65	L-Feb.2013	1.2
Rice, pasta, cornmeal ⁴	0.128	-0.4	-0.001	0.60	S-Oct.2012	-1.5
Rice ^{4, 5, 6}		0.5		0.65	S-Feb.2013	-0.5
Bakery products.....	0.757	0.9	0.006	0.40	L-Aug.2011	0.9
Bread ⁵	0.223	1.0	0.002	0.78	L-Jan.2013	1.0
White bread ^{4, 6}		0.8		1.36	S-Feb.2013	-0.3
Bread other than white ^{4, 6}		1.0		1.25	L-Jan.2013	2.2
Fresh biscuits, rolls, muffins ^{4, 5}	0.113	1.3	0.001	0.76	L-Jan.2011	1.4
Cakes, cupcakes, and cookies.....	0.183	-0.4	-0.001	0.76	S-Feb.2013	-1.1
Cookies ^{4, 6}		0.0		1.09	S-Feb.2013	-1.2
Fresh cakes and cupcakes ^{4, 6}		-0.8		0.99	S-May 2012	-2.2
Other bakery products.....	0.238	1.7	0.004	0.76	L-May 2011	1.7
Fresh sweetrolls, coffeecakes, doughnuts ^{4, 6} ...		0.4		1.27	S-Nov.2012	0.2
Crackers, bread, and cracker products ⁶		1.9		1.47	L-Apr.2012	2.3
Frozen and refrigerated bakery products, pies, tarts, turnovers ⁵		1.3		0.98	L-Nov.2012	2.3
Meats, poultry, fish, and eggs.....	1.937	0.4	0.007	0.23	L-Feb.2013	0.5
Meats, poultry, and fish.....	1.827	0.3	0.005	0.24	L-Feb.2013	0.4
Meats.....	1.181	-0.1	-0.001	0.29	L-Feb.2013	0.9
Beef and veal ⁴	0.558	-0.5	-0.003	0.39	S-Jun.2011	-0.7
Uncooked ground beef ⁴	0.219	-0.3	-0.001	0.54	S-Sep.2012	-0.3
Uncooked beef roasts ^{4, 5}	0.083	-1.7	-0.001	0.96	S-Dec.2009	-2.6
Uncooked beef steaks ^{4, 5}	0.204	-0.7	-0.001	0.66	-	-
Uncooked other beef and veal ^{4, 5}	0.052	0.7	0.000	1.06	L-Feb.2013	1.0
Pork.....	0.363	0.2	0.001	0.50	L-Feb.2013	0.9
Bacon, breakfast sausage, and related products ⁵	0.140	-0.3	0.000	0.70	S-Feb.2013	-0.3
Bacon and related products ⁶		-0.6		1.16	S-Sep.2012	-1.1
Breakfast sausage and related products ^{5, 6} ...		0.1		1.15	S-Jan.2013	0.1
Ham.....	0.079	-1.6	-0.001	1.02	S-Jan.2012	-1.6
Ham, excluding canned ⁶		-1.7		1.19	S-Sep.2009	-3.1
Pork chops.....	0.060	-0.7	0.000	0.98	L-Feb.2013	2.1
Other pork including roasts and picnics ⁵	0.084	0.7	0.001	1.11	L-Feb.2013	1.3
Other meats.....	0.260	0.5	0.001	0.62	L-Feb.2013	1.8
Frankfurters ⁶		-0.5		1.74	L-Feb.2013	4.2
Lunchmeats ^{4, 5, 6}		-0.2		0.57	L-Feb.2013	0.7
Lamb and organ meats ^{4, 6}		3.5		0.95	L-Oct.2012	5.0
Lamb and mutton ^{4, 5, 6}		4.2		1.30	L-Oct.2012	4.3
Poultry.....	0.347	0.0	0.000	0.67	S-Feb.2013	-0.4
Chicken ⁵	0.270	0.2	0.000	0.81	S-Feb.2013	-0.9
Fresh whole chicken ^{4, 6}		1.7		1.36	S-Feb.2013	-1.8
Fresh and frozen chicken parts ^{4, 6}		0.6		0.90	L-Dec.2012	1.6
Other poultry including turkey ⁵	0.077	-0.5	0.000	0.86	-	-
Fish and seafood ⁴	0.300	2.0	0.006	0.53	L-Feb.2000	2.2
Fresh fish and seafood ^{4, 5}	0.156	2.6	0.004	0.82	L-Jan.2010	3.0
Processed fish and seafood ⁵	0.144	2.0	0.003	0.64	L-May 2011	2.1

See footnotes at end of table.

Table 6. Consumer Price Index for All Urban Consumers (CPI-U): U.S. city average, by expenditure category, April 2013, 1-month analysis table — Continued
 [1982-84=100, unless otherwise noted]

Expenditure category	Relative importance Mar. 2013	One Month				
		Seasonally adjusted percent change Mar. 2013-Apr. 2013	Seasonally adjusted effect on All Items Mar. 2013-Apr. 2013 ¹	Standard error, median price change ²	Largest (L) or Smallest (S) seasonally adjusted change since: ³	
					Date	Percent change
Shelf stable fish and seafood ^{4, 6}		2.9		1.02	L-Apr.2012	3.4
Frozen fish and seafood ^{4, 6}		4.7		0.92	L-Apr.2005	5.2
Eggs.....	0.109	1.7	0.002	0.81	L-Feb.2013	3.2
Dairy and related products ⁴	0.887	0.0	0.000	0.29	L-Jan.2013	0.4
Milk ^{4, 5}	0.291	-0.4	-0.001	0.36	—	—
Fresh whole milk ^{4, 6}		0.0		0.59	L-Dec.2012	0.6
Fresh milk other than whole ^{4, 5, 6}		-0.5		0.45	S-Feb.2013	-0.8
Cheese and related products ⁴	0.282	-0.3	-0.001	0.59	L-Feb.2013	0.2
Ice cream and related products.....	0.134	-0.2	0.000	0.89	L-Feb.2013	0.1
Other dairy and related products ⁵	0.180	1.6	0.003	0.62	L-Apr.2008	2.2
Fruits and vegetables.....	1.281	-1.4	-0.018	0.33	S-Dec.2008	-1.8
Fresh fruits and vegetables.....	0.982	-1.9	-0.018	0.40	S-Oct.2011	-1.9
Fresh fruits.....	0.504	-1.5	-0.008	0.63	S-Jan.2013	-1.7
Apples.....	0.092	-1.3	-0.001	1.15	S-May 2011	-1.3
Bananas.....	0.080	-1.9	-0.001	0.71	S-Nov.2009	-6.3
Citrus fruits ⁵	0.104	0.1	0.000	1.30	S-Feb.2013	-0.5
Oranges, including tangerines ⁶		-1.5		1.92	S-Sep.2012	-1.8
Other fresh fruits ⁵	0.228	-2.3	-0.005	1.12	S-Jan.2013	-3.5
Fresh vegetables.....	0.478	-2.3	-0.011	0.60	S-Apr.2011	-3.0
Potatoes.....	0.074	1.8	0.001	1.25	L-Aug.2011	2.4
Lettuce.....	0.072	-7.6	-0.005	1.57	S-Apr.2011	-12.3
Tomatoes ⁴	0.082	-3.4	-0.003	1.57	S-Feb.2013	-4.7
Other fresh vegetables.....	0.251	-0.8	-0.002	0.88	S-Feb.2012	-3.5
Processed fruits and vegetables ⁵	0.299	0.0	0.000	0.47	L-Feb.2013	0.2
Canned fruits and vegetables ⁵	0.150	0.0	0.000	0.67	L-Jan.2013	1.3
Canned fruits ^{5, 6}		-0.6		0.99	S-Dec.2012	-2.8
Canned vegetables ^{5, 6}		0.1		0.97	L-Jan.2013	1.6
Frozen fruits and vegetables ⁵	0.094	0.5	0.000	0.92	L-Aug.2012	0.5
Frozen vegetables ⁶		0.7		0.90	L-Feb.2013	0.8
Other processed fruits and vegetables including dried ⁵	0.056	0.2	0.000	0.60	L-Feb.2013	0.2
Dried beans, peas, and lentils ^{4, 5, 6}		-2.1		0.70	S-Nov.2012	-2.9
Nonalcoholic beverages and beverage materials.....	0.933	0.3	0.003	0.37	L-Nov.2012	0.3
Juices and nonalcoholic drinks ⁵	0.702	0.6	0.004	0.45	L-Sep.2012	0.9
Carbonated drinks.....	0.287	1.0	0.003	0.70	L-Sep.2012	1.3
Frozen noncarbonated juices and drinks ^{4, 5}	0.013	0.4	0.000	0.54	L-Jan.2013	1.0
Nonfrozen noncarbonated juices and drinks ^{4, 5}	0.401	0.2	0.001	0.65	L-Nov.2012	1.1
Beverage materials including coffee and tea ⁵	0.232	-0.8	-0.002	0.46	S-Dec.2010	-1.1
Coffee.....	0.139	-2.1	-0.003	0.64	S-EVER	—
Roasted coffee ⁶		-2.3		0.79	S-Jun.2002	-2.6
Instant and freeze dried coffee ^{4, 6}		-3.3		0.68	S-Sep.2007	-3.5
Other beverage materials including tea ⁵	0.093	1.1	0.001	0.59	L-Jun.2012	1.8
Other food at home.....	2.254	0.4	0.010	0.24	L-Jan.2012	0.5
Sugar and sweets ⁴	0.299	-0.1	0.000	0.55	S-Feb.2013	-1.3
Sugar and artificial sweeteners.....	0.057	0.7	0.000	0.51	L-Dec.2012	0.8
Candy and chewing gum ^{4, 5}	0.180	-0.6	-0.001	0.83	S-Feb.2013	-1.6
Other sweets ⁵	0.063	1.3	0.001	0.61	L-Jan.2011	1.3
Fats and oils.....	0.257	0.5	0.001	0.46	L-Nov.2012	0.6
Butter and margarine ⁵	0.075	0.3	0.000	0.77	S-Jan.2013	-1.1
Butter ⁶		1.4		1.32	L-Feb.2013	1.5
Margarine ⁶		-0.1		1.11	S-Jan.2013	-2.8
Salad dressing ^{4, 5}	0.064	-0.6	0.000	0.78	L-Jan.2013	-0.5
Other fats and oils including peanut butter ⁵	0.119	1.1	0.001	0.78	L-Jan.2012	2.5

See footnotes at end of table.

Table 6. Consumer Price Index for All Urban Consumers (CPI-U): U.S. city average, by expenditure category, April 2013, 1-month analysis table — Continued
 [1982-84=100, unless otherwise noted]

Expenditure category	Relative importance Mar. 2013	One Month				
		Seasonally adjusted percent change Mar. 2013-Apr. 2013	Seasonally adjusted effect on All Items Mar. 2013-Apr. 2013 ¹	Standard error, median price change ²	Largest (L) or Smallest (S) seasonally adjusted change since: ³	
					Date	Percent change
Peanut butter ^{4, 5, 6}		0.1		0.85	L-Jan.2013	0.3
Other foods.....	1.698	0.5	0.009	0.30	L-Nov.2012	0.5
Soups.....	0.098	2.6	0.003	1.13	L-Nov.2008	3.1
Frozen and freeze dried prepared foods ⁴	0.295	-0.1	0.000	0.67	S-Feb.2013	-0.8
Snacks ⁴	0.330	-0.2	-0.001	0.71	S-Jan.2013	-0.7
Spices, seasonings, condiments, sauces.....	0.283	2.1	0.006	0.71	L-Oct.2011	2.2
Salt and other seasonings and spices ^{5, 6}		0.4		0.92	L-Aug.2012	0.7
Olives, pickles, relishes ^{4, 5, 6}		0.8		0.57	S-Feb.2013	-0.2
Sauces and gravies ^{5, 6}		1.1		1.21	L-Dec.2012	2.3
Other condiments ^{4, 6}		1.8		0.62	L-Jan.2013	4.1
Baby food ^{4, 5}	0.072	0.0	0.000	0.47	S-Feb.2013	-0.3
Other miscellaneous foods ^{4, 5}	0.620	0.9	0.006	0.48	L-May 2012	0.9
Prepared salads ^{4, 7, 6}		0.3		0.73	S-Jan.2013	0.3
Food away from home ⁴	5.660	0.3	0.019	0.05	L-Aug.2012	0.3
Full service meals and snacks ^{4, 5}	2.688	0.4	0.010	0.07	L-Jan.2012	0.4
Limited service meals and snacks ^{4, 5}	2.268	0.3	0.008	0.07	L-Jul.2012	0.3
Food at employee sites and schools ⁵	0.261	0.3	0.001	0.14	—	—
Food at elementary and secondary schools ^{4, 8, 6}		0.1		0.07	L-Feb.2013	0.1
Food from vending machines and mobile vendors ^{4, 5}	0.082	-0.1	0.000	0.26	S-Sep.2012	-0.1
Other food away from home ^{4, 5}	0.360	0.4	0.001	0.12	—	—
Energy.....	10.081	-4.3	-0.435	0.12	S-Dec.2008	-9.5
Energy commodities.....	6.346	-7.9	-0.489	0.14	S-Dec.2008	-18.5
Fuel oil and other fuels ⁴	0.334	-3.3	-0.011	0.34	S-Jun.2012	-7.0
Fuel oil ⁴	0.232	-4.4	-0.010	0.44	S-Jun.2012	-7.9
Propane, kerosene, and firewood ^{4, 9}	0.101	1.5	0.001	0.46	L-May 2011	1.8
Motor fuel.....	6.013	-8.1	-0.478	0.14	S-Dec.2008	-19.2
Gasoline (all types).....	5.819	-8.1	-0.462	0.15	S-Dec.2008	-19.5
Gasoline, unleaded regular ⁶		-8.4		0.53	S-Dec.2008	-19.9
Gasoline, unleaded midgrade ^{10, 6}		-7.8		0.51	S-Dec.2008	-18.6
Gasoline, unleaded premium ⁶		-7.5		0.55	S-Dec.2008	-18.3
Other motor fuels ⁵	0.193	-6.3	-0.012	0.16	S-Mar.2009	-10.8
Energy services ¹¹	3.735	1.4	0.054	0.18	L-Jul.2008	3.2
Electricity ¹¹	2.840	0.5	0.014	0.21	L-Jan.2013	1.1
Utility (piped) gas service ¹¹	0.895	4.4	0.040	0.26	L-Jul.2008	5.8
All items less food and energy.....	75.746	0.1	0.039	0.04	—	—
Commodities less food and energy commodities.....	19.482	0.0	0.006	0.10	L-Feb.2013	0.0
Household furnishings and supplies ¹²	3.264	0.0	-0.002	0.14	L-Feb.2013	0.2
Window and floor coverings and other linens ^{4, 5}	0.259	-0.1	0.000	0.42	L-Jan.2013	0.6
Floor coverings ^{4, 5}	0.037	-1.2	0.000	0.41	S-Dec.2011	-1.2
Window coverings ^{4, 5}	0.076	-0.1	0.000	0.64	S-Jan.2013	-0.4
Other linens ^{4, 5}	0.146	0.1	0.000	0.70	L-Jan.2013	1.0
Furniture and bedding ⁴	0.704	0.0	0.000	0.34	S-Jan.2013	-0.6
Bedroom furniture ⁴	0.229	-0.9	-0.002	0.43	S-Jan.2013	-1.0
Living room, kitchen, and dining room furniture ^{4, 5}	0.338	0.2	0.001	0.48	S-Jan.2013	-0.2
Other furniture ⁵	0.130	1.6	0.002	0.82	L-Jul.2012	4.6
Infants' furniture ^{4, 8, 6}						
Appliances ⁵	0.282	-0.6	-0.002	0.36	S-Feb.2013	-0.9
Major appliances ⁵	0.164	-1.0	-0.002	0.49	S-Aug.2012	-1.1
Laundry equipment ⁶		-0.5		0.68	S-Feb.2013	-1.4
Other appliances ^{4, 5}	0.115	-0.3	0.000	0.47	L-Feb.2013	-0.1
Other household equipment and furnishings ⁵	0.473	-0.6	-0.003	0.53	L-Jan.2013	0.0
Clocks, lamps, and decorator items ⁴	0.242	-0.9	-0.002	0.84	L-Feb.2013	-0.7

See footnotes at end of table.

Table 6. Consumer Price Index for All Urban Consumers (CPI-U): U.S. city average, by expenditure category, April 2013, 1-month analysis table — Continued
 [1982-84=100, unless otherwise noted]

Expenditure category	Relative importance Mar. 2013	One Month				
		Seasonally adjusted percent change Mar. 2013-Apr. 2013	Seasonally adjusted effect on All Items Mar. 2013-Apr. 2013 ¹	Standard error, median price change ²	Largest (L) or Smallest (S) seasonally adjusted change since: ³	
					Date	Percent change
Indoor plants and flowers ¹³	0.102	0.1	0.000	0.69	S-Jan.2013	-0.5
Dishes and flatware ^{4, 5}	0.047	0.0	0.000	1.15	L-Feb.2013	0.0
Nonelectric cookware and tableware ⁵	0.082	0.4	0.000	0.64	L-Jan.2013	0.8
Tools, hardware, outdoor equipment and supplies ⁵ . . .	0.669	0.3	0.002	0.26	L-Feb.2013	0.3
Tools, hardware and supplies ^{4, 5}	0.171	0.7	0.001	0.45	L-Feb.2013	0.8
Outdoor equipment and supplies ⁵	0.354	0.5	0.002	0.33	L-Nov.2012	0.7
Housekeeping supplies ⁴	0.877	-0.2	-0.002	0.22	S-Jan.2013	-0.3
Household cleaning products ^{4, 5}	0.353	-0.3	-0.001	0.38	L-Feb.2013	0.4
Household paper products ^{4, 5}	0.242	-0.2	-0.001	0.41	S-Dec.2012	-0.3
Miscellaneous household products ^{4, 5}	0.282	-0.1	0.000	0.41	L-Feb.2013	0.2
Apparel.....	3.588	-0.3	-0.012	0.50	L-Feb.2013	-0.1
Men's and boys' apparel.....	0.860	1.1	0.010	0.75	L-Mar.2012	1.1
Men's apparel.....	0.683	2.1	0.014	0.91	L-Feb.2009	3.0
Men's suits, sport coats, and outerwear.....	0.127	1.3	0.002	1.84	L-Feb.2013	3.8
Men's furnishings.....	0.182	3.3	0.006	0.96	L-Sep.1997	3.5
Men's shirts and sweaters ⁵	0.209	0.7	0.001	1.76	S-Feb.2013	-2.0
Men's pants and shorts.....	0.158	2.8	0.004	1.62	L-Jun.2011	3.4
Boys' apparel.....	0.177	-0.1	0.000	1.53	L-Dec.2012	1.4
Women's and girls' apparel.....	1.525	-1.1	-0.017	0.84	L-Feb.2013	-0.1
Women's apparel.....	1.288	-1.3	-0.016	0.93	S-Sep.2011	-2.1
Women's outerwear.....	0.091	0.8	0.001	3.65	L-Feb.2013	2.3
Women's dresses.....	0.176	0.7	0.001	3.44	L-Jan.2013	2.5
Women's suits and separates ⁵	0.617	-2.3	-0.014	1.04	S-May 2009	-2.3
Women's underwear, nightwear, sportswear and accessories ⁵	0.388	0.0	0.000	1.07	L-Jan.2013	1.3
Girls' apparel.....	0.237	-0.4	-0.001	1.95	L-Jan.2013	3.7
Footwear.....	0.691	0.0	0.000	0.76	L-Feb.2013	0.4
Men's footwear ⁴	0.214	0.0	0.000	1.10	L-Feb.2013	1.4
Boys' and girls' footwear.....	0.151	0.5	0.001	1.28	L-Feb.2013	1.2
Women's footwear.....	0.326	0.5	0.002	1.01	L-Dec.2012	0.9
Infants' and toddlers' apparel.....	0.194	-1.3	-0.002	0.86	L-Feb.2013	0.5
Jewelry and watches ⁹	0.318	-0.8	-0.003	0.94	S-Nov.2012	-0.8
Watches ^{4, 9}	0.091	-0.6	-0.001	1.17	S-Nov.2012	-3.0
Jewelry ⁹	0.227	-0.6	-0.001	1.03	S-Nov.2012	-0.8
Transportation commodities less motor fuel ¹²	5.520	0.3	0.018	0.06	S-Feb.2013	0.1
New vehicles.....	3.163	0.3	0.009	0.10	L-Nov.2012	0.3
New cars and trucks ^{5, 6}		0.3		0.11	L-Nov.2012	0.3
New cars ⁶		0.2		0.10	L-Jan.2013	0.4
New trucks ^{14, 6}		0.5		0.13	L-May 2011	0.7
Used cars and trucks.....	1.863	0.6	0.011	0.01	S-Jan.2013	0.2
Motor vehicle parts and equipment ⁴	0.426	-0.5	-0.002	0.20	S-Jan.2013	-0.6
Tires ⁴	0.287	-0.7	-0.002	0.23	S-Jan.2013	-0.8
Vehicle accessories other than tires ^{4, 5}	0.139	0.1	0.000	0.31	S-Feb.2013	0.1
Vehicle parts and equipment other than tires ^{4, 6}		-0.2		0.31	S-Aug.2012	-0.2
Motor oil, coolant, and fluids ^{4, 6}		1.4		0.58	L-Nov.2012	3.9
Medical care commodities.....	1.704	0.1	0.001	0.17	—	—
Medicinal drugs ^{4, 12}	1.625	0.0	0.000	0.18	S-Dec.2012	-0.5
Prescription drugs.....	1.319	-0.1	-0.001	0.18	S-Feb.2013	-0.3
Nonprescription drugs ^{4, 12}	0.307	0.7	0.002	0.47	L-Mar.2012	1.0
Medical equipment and supplies ^{4, 12}	0.078	0.2	0.000	0.43	L-Nov.2012	0.7
Recreation commodities ¹²	2.243	-0.1	-0.002	0.17	S-Dec.2012	-0.6
Video and audio products ¹²	0.384	-1.5	-0.006	0.30	S-Apr.2012	-1.6

See footnotes at end of table.

Table 6. Consumer Price Index for All Urban Consumers (CPI-U): U.S. city average, by expenditure category, April 2013, 1-month analysis table — Continued
 [1982-84=100, unless otherwise noted]

Expenditure category	Relative importance Mar. 2013	One Month				
		Seasonally adjusted percent change Mar. 2013-Apr. 2013	Seasonally adjusted effect on All Items Mar. 2013-Apr. 2013 ¹	Standard error, median price change ²	Largest (L) or Smallest (S) seasonally adjusted change since: ³	
					Date	Percent change
Televisions.....	0.138	-3.5	-0.005	0.61	S-Feb.2010	-4.3
Other video equipment ⁴ . ⁵	0.025	0.8	0.000	0.80	S-Feb.2013	0.1
Audio equipment ⁴	0.067	-1.2	-0.001	0.49	L-Feb.2013	0.5
Audio discs, tapes and other media ⁴ . ⁵	0.043	0.1	0.000	0.41	S-Feb.2013	-1.5
Pets and pet products ⁴	0.685	0.3	0.002	0.39	—	—
Pet food ⁴ . ⁵ . ⁶		0.2		0.44	S-Jan.2013	0.0
Purchase of pets, pet supplies, accessories ⁴ . ⁵ . ⁶ ...		0.4		0.64	L-Nov.2012	0.8
Sporting goods ⁴	0.452	0.3	0.002	0.30	L-Sep.2012	0.4
Sports vehicles including bicycles ⁴	0.241	0.9	0.002	0.30	L-Jun.2012	0.9
Sports equipment.....	0.201	-0.4	-0.001	0.46	L-Feb.2013	0.0
Photographic equipment and supplies.....	0.051	-3.1	-0.002	0.62	S-EVER	—
Film and photographic supplies ⁴ . ⁵ . ⁶						
Photographic equipment ⁵ . ⁶		-4.2		0.80	S-EVER	—
Recreational reading materials ⁴	0.228	0.2	0.000	0.35	S-Feb.2013	0.0
Newspapers and magazines ⁴ . ⁵	0.127	0.3	0.000	0.52	—	—
Recreational books ⁴ . ⁵	0.097	0.0	0.000	0.39	S-Oct.2012	-1.1
Other recreational goods ⁵	0.444	0.4	0.002	0.44	L-Jan.2013	0.9
Toys ⁴	0.325	0.3	0.001	0.53	L-Jan.2013	1.7
Toys, games, hobbies and playground equipment ⁵ . ⁶		1.0		0.63	L-Feb.2012	1.1
Sewing machines, fabric and supplies ⁴ . ⁵	0.060	0.6	0.000	0.91	S-Feb.2013	-0.1
Music instruments and accessories ⁵	0.039	0.1	0.000	0.40	S-Feb.2013	0.0
Education and communication commodities ¹²	0.576	-0.6	-0.003	0.30	S-Apr.2012	-0.7
Educational books and supplies.....	0.212	0.5	0.001	0.33	S-Feb.2013	0.0
College textbooks ⁴ . ¹⁵ . ⁶		0.1		0.40	S-Feb.2013	0.1
Information technology commodities ¹²	0.365	-1.3	-0.005	0.36	S-Apr.2012	-1.3
Personal computers and peripheral equipment ⁷	0.238	-1.3	-0.003	0.48	S-Nov.2012	-1.4
Computer software and accessories ⁴ . ⁵	0.044	-1.4	-0.001	0.75	—	—
Telephone hardware, calculators, and other consumer information items ⁴ . ⁵	0.083	-1.0	-0.001	0.50	S-Nov.2012	-1.2
Alcoholic beverages.....	0.946	0.2	0.002	0.17	—	—
Alcoholic beverages at home.....	0.569	0.1	0.001	0.24	S-Jan.2013	-0.1
Beer, ale, and other malt beverages at home.....	0.272	0.0	0.000	0.25	S-Oct.2012	-0.2
Distilled spirits at home ⁴	0.072	-0.6	0.000	0.35	S-Nov.2010	-0.8
Whiskey at home ⁶		-0.2		0.56	S-Aug.2012	-0.4
Distilled spirits, excluding whiskey, at home ⁴ . ⁶ ...		-0.6		0.41	S-Nov.2012	-0.8
Wine at home.....	0.226	0.5	0.001	0.40	L-Dec.2012	0.6
Alcoholic beverages away from home ⁴	0.377	0.4	0.002	0.27	L-Feb.2013	0.4
Beer, ale, and other malt beverages away from home ⁴ . ⁵ . ⁶		0.5		0.17	L-Apr.2011	0.6
Wine away from home ⁴ . ⁵ . ⁶		-0.1		0.33	L-Feb.2013	1.0
Distilled spirits away from home ⁴ . ⁵ . ⁶		0.7		0.31	L-May 2012	0.9
Other goods ¹²	1.641	0.2	0.003	0.16	S-Feb.2013	-0.1
Tobacco and smoking products ⁴	0.795	0.6	0.005	0.15	L-Jul.2012	1.1
Cigarettes ⁴ . ⁵	0.735	0.6	0.005	0.16	L-Jan.2013	0.6
Tobacco products other than cigarettes ⁴ . ⁵	0.054	0.3	0.000	0.32	S-Jan.2013	0.3
Personal care products ⁴	0.643	-0.4	-0.003	0.33	S-Jan.2013	-0.4
Hair, dental, shaving, and miscellaneous personal care products ⁴ . ⁵	0.335	-0.5	-0.002	0.52	S-Jan.2013	-0.5
Cosmetics, perfume, bath, nail preparations and implements ⁴	0.301	-0.3	-0.001	0.43	S-Dec.2012	-0.6
Miscellaneous personal goods ⁵	0.202	0.6	0.001	0.41	L-Aug.2012	1.0
Stationery, stationery supplies, gift wrap ⁶		0.7		0.40	L-Aug.2012	1.1
Infants' equipment ⁴ . ⁸ . ⁶		0.2		0.56	S-Feb.2013	0.2

See footnotes at end of table.

Table 6. Consumer Price Index for All Urban Consumers (CPI-U): U.S. city average, by expenditure category, April 2013, 1-month analysis table — Continued
 [1982-84=100, unless otherwise noted]

Expenditure category	Relative importance Mar. 2013	One Month				
		Seasonally adjusted percent change Mar. 2013-Apr. 2013	Seasonally adjusted effect on All Items Mar. 2013-Apr. 2013 ¹	Standard error, median price change ²	Largest (L) or Smallest (S) seasonally adjusted change since: ³	
					Date	Percent change
Services less energy services.....	56.263	0.1	0.034	0.04	S-Aug.2012	0.1
Shelter.....	31.494	0.2	0.054	0.05	—	—
Rent of shelter ¹⁶	31.141	0.2	0.054	0.05	—	—
Rent of primary residence ¹¹	6.498	0.2	0.010	0.05	—	—
Lodging away from home ⁵	0.813	0.3	0.003	1.00	S-Feb.2013	0.3
Housing at school, excluding board ^{11, 16}	0.157	0.3	0.001	0.05	S-Feb.2013	0.2
Other lodging away from home including hotels and motels.....	0.656	0.4	0.002	1.24	S-Feb.2013	0.3
Owners' equivalent rent of residences ^{11, 16}	23.831	0.2	0.045	0.04	L-Feb.2013	0.2
Owners' equivalent rent of primary residence ^{11, 16}	22.424	0.2	0.042	0.04	L-Feb.2013	0.2
Tenants' and household insurance ^{4, 5}	0.353	-1.0	-0.004	0.26	S-Dec.2010	-1.0
Water and sewer and trash collection services ⁵	1.201	0.2	0.003	0.16	S-Sep.2012	0.2
Water and sewerage maintenance ¹¹	0.911	0.2	0.002	0.18	S-Sep.2012	0.2
Garbage and trash collection ^{4, 14}	0.290	0.3	0.001	0.21	L-Oct.2012	0.5
Household operations ^{4, 5}	0.724	-0.4	-0.003	0.14	S-Mar.2011	-0.5
Domestic services ^{4, 5}	0.248	0.2	0.001	0.13	—	—
Gardening and lawn care services ^{4, 5}	0.236		-0.003	0.08	—	—
Moving, storage, freight expense ^{4, 5}	0.089	0.1	0.000	0.78	S-Feb.2013	-0.2
Repair of household items ^{4, 5}	0.078	-0.3	0.000	0.25	S-Sep.2012	-0.7
Medical care services.....	5.454	-0.1	-0.003	0.07	S-Nov.1975	-0.2
Professional services.....	3.001	0.3	0.008	0.08	S-Feb.2013	0.1
Physicians' services ¹¹	1.606	0.4	0.007	0.13	L-Sep.2012	0.4
Dental services ¹¹	0.771	0.2	0.002	0.09	S-Nov.2012	0.2
Eyeglasses and eye care ^{4, 9}	0.247	0.4	0.001	0.21	L-Feb.2013	0.4
Services by other medical professionals ^{11, 9}	0.376	0.0	0.000	0.08	S-Dec.2012	0.0
Hospital and related services.....	1.795	-0.6	-0.011	0.14	S-EVER	—
Hospital services ^{11, 17}	1.572	-0.7	-0.012	0.16	S-EVER	—
Inpatient hospital services ^{11, 17, 6}		-0.9		0.21	S-EVER	—
Outpatient hospital services ^{11, 9, 6}		-0.5		0.33	S-Aug.2004	-0.6
Nursing homes and adult day services ^{11, 17}	0.138	0.0	0.000	0.08	S-Feb.2013	0.0
Care of invalids and elderly at home ^{4, 8}	0.085	0.1	0.000	0.08	—	—
Health insurance ^{4, 8}	0.658	-0.2	-0.001	0.08	S-Mar.2011	-0.5
Transportation services.....	5.808	-0.2	-0.010	0.11	S-Nov.2008	-0.4
Leased cars and trucks ¹⁵	0.370	-0.8	-0.003	0.51	L-Feb.2013	0.6
Car and truck rental ⁵	0.070	-1.5	-0.001	1.28	S-Sep.2012	-1.6
Motor vehicle maintenance and repair ⁴	1.140	0.1	0.001	0.11	L-Feb.2013	0.2
Motor vehicle body work ⁴	0.057	0.3	0.000	0.14	L-Dec.2012	0.4
Motor vehicle maintenance and servicing ⁴	0.456	0.0	0.000	0.14	L-Feb.2013	0.1
Motor vehicle repair ^{4, 5}	0.591	0.1	0.001	0.16	L-Feb.2013	0.2
Motor vehicle insurance.....	2.466	0.0	-0.001	0.18	S-Feb.2012	-0.1
Motor vehicle fees ^{4, 5}	0.559	0.0	0.000	0.06	S-Nov.2012	0.0
State motor vehicle registration and license fees ^{4, 11, 5}	0.322	0.0	0.000	0.01	—	—
Parking and other fees ^{4, 5}	0.215	-0.1	0.000	0.10	S-Nov.2010	-0.2
Parking fees and tolls ^{4, 5, 6}		-0.1		0.15	S-Mar.2011	-0.1
Automobile service clubs ^{4, 5, 6}		0.0		0.20	L-Feb.2013	0.2
Public transportation.....	1.203	-0.4	-0.005	0.32	S-Feb.2013	-0.4
Airline fare.....	0.785	-0.7	-0.005	0.45	S-Aug.2012	-1.4
Other intercity transportation.....	0.148	-1.0	-0.002	0.80	S-Feb.2013	-1.1
Intercity bus fare ^{4, 7, 6}						
Intercity train fare ^{7, 6}		-2.8		1.49	S-Feb.2013	-5.0
Ship fare ^{4, 5, 6}		0.1		0.59	L-Jan.2013	0.5

See footnotes at end of table.

Table 6. Consumer Price Index for All Urban Consumers (CPI-U): U.S. city average, by expenditure category, April 2013, 1-month analysis table — Continued
 [1982-84=100, unless otherwise noted]

Expenditure category	Relative importance Mar. 2013	One Month				
		Seasonally adjusted percent change Mar. 2013-Apr. 2013	Seasonally adjusted effect on All Items Mar. 2013-Apr. 2013 ¹	Standard error, median price change ²	Largest (L) or Smallest (S) seasonally adjusted change since: ³	
					Date	Percent change
Intracity transportation ⁴	0.268	0.1	0.000	0.11	S-Feb.2013	0.1
Intracity mass transit ^{4, 12, 6}		0.1		0.06	S-Feb.2013	0.1
Recreation services ¹²	3.714	-0.1	-0.004	0.22	—	—
Video and audio services ¹²	1.520	0.0	-0.001	0.17	S-Dec.2012	0.0
Cable and satellite television and radio service ¹⁴ ..	1.411	0.0	0.001	0.17	S-Oct.2012	-0.3
Video discs and other media, including rental of video and audio ^{4, 5}	0.108	-1.1	-0.001	0.75	S-Dec.2012	-1.2
Video discs and other media ^{4, 5, 6}		-0.7		0.85	S-Dec.2012	-1.5
Rental of video or audio discs and other media ^{4, 5, 6}		-0.9		0.33	S-Jul.2012	-1.1
Pet services including veterinary ⁵	0.409	0.3	0.001	0.13	L-Dec.2012	0.3
Pet services ^{4, 5, 6}		1.0		0.19	L-Mar.2011	1.0
Veterinarian services ^{5, 6}		0.3		0.15	L-Dec.2012	0.3
Photographers and film processing ^{4, 5}	0.057	0.6	0.000	0.32	L-Nov.2011	0.6
Photographer fees ^{4, 5, 6}		0.1		0.13	L-Jan.2013	0.1
Film processing ^{4, 5, 6}		0.3		0.40	L-Feb.2013	0.3
Other recreation services ⁵	1.727	-0.3	-0.005	0.43	L-Feb.2013	0.3
Club dues and fees for participant sports and group exercises ⁵	0.564	0.2	0.001	0.46	L-Feb.2013	1.1
Admissions ⁴	0.629	-0.7	-0.005	0.76	S-Feb.2012	-0.9
Admission to movies, theaters, and concerts ^{4, 5, 6}		-0.8		0.59	S-Feb.2012	-1.0
Admission to sporting events ^{4, 5, 6}		-0.5		0.77	S-Feb.2013	-0.5
Fees for lessons or instructions ^{4, 9}	0.231	-0.2	0.000	0.26	L-Feb.2013	0.7
Education and communication services ¹²	6.157	-0.1	-0.007	0.06	S-Aug.2012	-0.3
Tuition, other school fees, and childcare	3.039	0.3	0.010	0.08	—	—
College tuition and fees	1.715	0.4	0.007	0.13	—	—
Elementary and high school tuition and fees	0.384	0.3	0.001	0.06	—	—
Child care and nursery school ¹³	0.777	0.1	0.001	0.11	S-Feb.2013	0.1
Technical and business school tuition and fees ⁵ ..	0.059	0.1	0.000	0.16	S-Feb.2013	0.1
Postage and delivery services ⁵	0.156	0.1	0.000	0.02	S-Jan.2013	0.0
Postage ⁴	0.145	0.0	0.000	0.00	S-Jan.2013	-0.2
Delivery services ^{4, 5}	0.011	1.5	0.000	0.24	L-Jan.2013	2.5
Telephone services ^{4, 5}	2.366	-0.6	-0.015	0.05	S-Dec.2010	-0.6
Wireless telephone services ^{4, 5}	1.420	-1.0	-0.014	0.04	S-Jan.2011	-1.3
Land-line telephone services ^{4, 12}	0.947	-0.1	-0.001	0.09	S-Sep.2012	-0.2
Internet services and electronic information providers ^{4, 5}	0.582	-0.3	-0.002	0.26	S-Aug.2012	-1.2
Other personal services ^{4, 12}	1.710	0.3	0.005	0.13	L-Feb.2013	0.5
Personal care services ⁴	0.628	0.2	0.001	0.09	—	—
Haircuts and other personal care services ^{4, 5}	0.628	0.2	0.001	0.09	—	—
Miscellaneous personal services	1.082	0.1	0.002	0.18	—	—
Legal services ⁹	0.297	0.0	0.000	0.11	S-Jan.2013	0.0
Funeral expenses ⁹	0.159	0.0	0.000	0.14	—	—
Laundry and dry cleaning services ^{4, 5}	0.239	0.1	0.000	0.10	—	—
Apparel services other than laundry and dry cleaning ^{4, 5}	0.030	-0.4	0.000	0.11	S-Jun.1999	-0.4
Financial services ^{4, 9}	0.215	1.4	0.003	0.69	L-Feb.2013	1.7
Checking account and other bank services ^{4, 5, 6}		0.0		0.69	—	—
Tax return preparation and other accounting fees ^{5, 6}		1.8		0.57	L-Apr.2012	1.9
Special aggregate indexes						
All items less food	85.827	-0.5	-0.396	0.04	S-Dec.2008	-1.0

See footnotes at end of table.

Table 6. Consumer Price Index for All Urban Consumers (CPI-U): U.S. city average, by expenditure category, April 2013, 1-month analysis table — Continued
 [1982-84=100, unless otherwise noted]

Expenditure category	Relative importance Mar. 2013	One Month				
		Seasonally adjusted percent change Mar. 2013-Apr. 2013	Seasonally adjusted effect on All Items Mar. 2013-Apr. 2013 ¹	Standard error, median price change ²	Largest (L) or Smallest (S) seasonally adjusted change since: ³	
					Date	Percent change
All items less shelter.....	68.506	-0.6	-0.422	0.05	S-Dec.2008	-1.2
All items less food and shelter.....	54.332	-0.8	-0.450	0.05	S-Dec.2008	-1.6
All items less food, shelter, and energy.....	44.251	0.0	-0.015	0.06	S-Aug.2012	0.0
All items less food, shelter, energy, and used cars and trucks.....	42.389	-0.1	-0.025	0.06	S-Nov.2006	-0.2
All items less medical care.....	92.842	-0.4	-0.366	0.04	S-Dec.2008	-0.9
All items less energy.....	89.919	0.1	0.067	0.04	—	—
Commodities.....	40.002	-1.2	-0.459	0.06	S-Dec.2008	-2.1
Commodities less food, energy, and used cars and trucks..	17.620	0.0	-0.005	0.11	L-Jan.2013	0.2
Commodities less food.....	25.829	-1.9	-0.487	0.08	S-Dec.2008	-3.4
Commodities less food and beverages.....	24.883	-2.0	-0.489	0.09	S-Dec.2008	-3.5
Services.....	59.998	0.1	0.087	0.04	S-Jul.2012	0.0
Services less rent of shelter ¹⁶	28.857	0.1	0.020	0.06	—	—
Services less medical care services.....	54.544	0.1	0.075	0.05	—	—
Durables.....	8.694	0.0	-0.004	0.07	—	—
Nondurables.....	31.308	-1.4	-0.439	0.08	S-Dec.2008	-2.7
Nondurables less food.....	17.135	-2.9	-0.496	0.12	S-Dec.2008	-5.2
Nondurables less food and beverages.....	16.189	-3.1	-0.500	0.13	S-Dec.2008	-5.7
Nondurables less food, beverages, and apparel.....	12.601	-4.0	-0.496	0.08	S-Dec.2008	-7.5
Nondurables less food and apparel.....	13.547	-3.7	-0.492	0.08	S-Dec.2008	-6.7
Housing.....	40.753	0.2	0.096	0.05	L-Feb.2013	0.2
Education and communication ⁵	6.733	-0.2	-0.010	0.06	S-Aug.2012	-0.3
Education ⁵	3.251	0.3	0.011	0.08	—	—
Communication ⁵	3.482	-0.6	-0.021	0.08	S-Aug.2012	-0.6
Information and information processing ⁵	3.327	-0.6	-0.021	0.08	S-Aug.2012	-0.6
Information technology, hardware and services ¹⁸	0.960	-0.7	-0.006	0.22	S-Aug.2012	-1.2
Recreation ⁵	5.957	-0.1	-0.006	0.15	—	—
Video and audio ⁵	1.904	-0.3	-0.006	0.16	S-Oct.2012	-0.4
Pets, pet products and services ⁵	1.093	0.3	0.003	0.24	—	—
Photography ⁵	0.110	-1.1	-0.001	0.35	S-Dec.2012	-1.1
Food and beverages.....	15.119	0.2	0.030	0.07	L-Dec.2012	0.2
Domestically produced farm food.....	7.200	0.0	-0.003	0.14	—	—
Other services.....	11.581	-0.1	-0.008	0.09	S-Aug.2012	-0.1
Apparel less footwear.....	2.897	-0.4	-0.012	0.59	L-Feb.2013	-0.2
Fuels and utilities.....	5.270	0.9	0.045	0.18	L-Feb.2011	0.9
Household energy.....	4.068	1.0	0.043	0.16	L-Feb.2011	1.0
Medical care.....	7.158	0.0	-0.002	0.08	S-Jul.2010	0.0
Transportation.....	17.340	-2.7	-0.470	0.07	S-Dec.2008	-5.0
Private transportation.....	16.137	-2.9	-0.465	0.06	S-Dec.2008	-5.3
New and used motor vehicles ⁵	5.534	0.3	0.015	0.08	—	—
Utilities and public transportation.....	9.916	0.4	0.037	0.12	L-Feb.2013	0.4
Household furnishings and operations.....	3.989	-0.1	-0.003	0.12	L-Feb.2013	0.0

See footnotes at end of table.

Table 6. Consumer Price Index for All Urban Consumers (CPI-U): U.S. city average, by expenditure category, April 2013, 1-month analysis table — Continued
 [1982-84=100, unless otherwise noted]

Expenditure category	Relative importance Mar. 2013	One Month				
		Seasonally adjusted percent change Mar. 2013-Apr. 2013	Seasonally adjusted effect on All Items Mar. 2013-Apr. 2013 ¹	Standard error, median price change ²	Largest (L) or Smallest (S) seasonally adjusted change since: ³	
					Date	Percent change
Other goods and services.....	3.351	0.2	0.006	0.11	L-Jan.2013	0.2
Personal care.....	2.556	0.0	0.001	0.13	S-Dec.2012	0.0

1 The 'effect' of an item category is a measure of that item's contribution to the All items price change. For example, if the Food index had an effect of 0.40, and the All items index rose 1.2 percent, then the increase in food prices contributed 0.40 / 1.2, or 33.3 percent, to that All items increase. Said another way, had food prices been unchanged for that month the change in the All items index would have been 1.2 percent minus 0.40, or 0.8 percent. Effects can be negative as well. For example, if the effect of food was a negative 0.1, and the All items index rose 0.5 percent, the All items index actually would have been 0.1 percent higher (or 0.6 percent) had food prices been unchanged. Since food prices fell while prices overall were rising, the contribution of food to the All items price change was negative (in this case, -0.1 / 0.5, or minus 20 percent).

2 A statistic's margin of error is often expressed as its point estimate plus or minus two standard errors. For example, if a CPI category rose 0.6 percent, and its standard error was 0.15 percent, the margin of error on this item's 1-month percent change would be 0.6 percent, plus or minus 0.3 percent.

3 If the current seasonally adjusted 1-month percent change is greater than the previous published 1-month percent change, then this column identifies the closest prior month with a 1-month percent change as (L)arge as or (L)arger than the current 1-month change. If the current 1-month percent change is smaller than the previous published 1-month percent change, the most recent month with a change as (S)mall or (S)maller than the current month change is identified. If the current and previous published 1-month percent changes are equal, a dash will appear. Standard numerical comparisons are used. For example, 0.8% is greater than 0.6%, -0.4% is less than -0.2%, and -0.2% is less than 0.0%. Note that a (L)arger change can be a smaller decline, for example, a -0.2% change is larger than a -0.4% change, but still represents a decline in the price index. Likewise, (S)maller changes can be increases, for example, a 0.6% change is smaller than 0.8%, but still represents an increase in the price index. In this context, a -0.2% change is considered to be smaller than a 0.0% change.

4 Not seasonally adjusted.

5 Indexes on a December 1997=100 base.

6 Special indexes based on a substantially smaller sample. These series do not contribute to the all items index aggregation and therefore do not have a relative importance or effect.

7 Indexes on a December 2007=100 base.

8 Indexes on a December 2005=100 base.

9 Indexes on a December 1986=100 base.

10 Indexes on a December 1993=100 base.

11 This index series was calculated using a Laspeyres estimator. All other item stratum index series were calculated using a geometric means estimator.

12 Indexes on a December 2009=100 base.

13 Indexes on a December 1990=100 base.

14 Indexes on a December 1983=100 base.

15 Indexes on a December 2001=100 base.

16 Indexes on a December 1982=100 base.

17 Indexes on a December 1996=100 base.

18 Indexes on a December 1988=100 base.

NOTE: Index applies to a month as a whole, not to any specific date.

Table 7. Consumer Price Index for All Urban Consumers (CPI-U): U.S. city average, by expenditure category, April 2013, 12-month analysis table
 [1982-84=100, unless otherwise noted]

Expenditure category	Relative importance Mar. 2013	Twelve Month				
		Unadjusted percent change Apr. 2012-Apr. 2013	Unadjusted effect on All Items Apr. 2012-Apr. 2013 ¹	Standard error, median price change ²	Largest (L) or Smallest (S) unadjusted change since: ³	
					Date	Percent change
All items.....	100.000	1.1		0.08	S-Nov.2010	1.1
Food.....	14.173	1.5	0.219	0.14	-	-
Food at home.....	8.513	1.0	0.087	0.18	-	-
Cereals and bakery products.....	1.220	1.3	0.015	0.42	L-Aug.2012	1.8
Cereals and cereal products.....	0.463	-0.5	-0.002	0.60	L-Feb.2013	-0.2
Flour and prepared flour mixes.....	0.052	1.9	0.001	1.21	L-Jan.2013	1.9
Breakfast cereal.....	0.284	-0.6	-0.002	0.83	L-Feb.2013	0.0
Rice, pasta, cornmeal.....	0.128	-1.3	-0.002	1.09	S-Feb.2013	-1.3
Rice ⁴ . ⁵		0.5		1.31	S-Feb.2013	-1.4
Bakery products.....	0.757	2.4	0.018	0.56	L-Jul.2012	2.8
Bread ⁴	0.223	2.8	0.006	1.06	L-Jan.2013	3.2
White bread ⁵		3.4		1.51	L-Apr.2012	4.4
Bread other than white ⁵		2.6		1.42	L-Feb.2013	3.2
Fresh biscuits, rolls, muffins ⁴	0.113	3.6	0.004	1.04	L-Mar.2012	3.9
Cakes, cupcakes, and cookies.....	0.183	0.5	0.001	1.40	S-May 2011	-0.6
Cookies ⁵		2.1		1.33	S-Feb.2013	0.6
Fresh cakes and cupcakes ⁵		-0.8		2.04	S-Jul.1998	-0.8
Other bakery products.....	0.238	2.9	0.007	0.99	L-Apr.2012	4.6
Fresh sweetrolls, coffeecakes, doughnuts ⁵		8.3		1.52	L-Jan.2009	8.5
Crackers, bread, and cracker products ⁵		-0.1		1.68	S-Feb.2013	-2.5
Frozen and refrigerated bakery products, pies, tarts, turnovers ⁵		1.5		1.47	L-Nov.2012	3.9
Meats, poultry, fish, and eggs.....	1.937	1.5	0.028	0.32	L-Feb.2013	1.9
Meats, poultry, and fish.....	1.827	1.4	0.025	0.34	L-Feb.2013	1.7
Meats.....	1.181	0.3	0.004	0.42	S-Apr.2010	0.2
Beef and veal.....	0.558	1.8	0.010	0.66	S-Apr.2010	1.3
Uncooked ground beef.....	0.219	2.7	0.006	0.97	S-May 2010	1.2
Uncooked beef roasts ⁴	0.083	3.3	0.003	1.43	S-Feb.2013	2.7
Uncooked beef steaks ⁴	0.204	-0.2	0.000	1.04	S-Mar.2010	-2.8
Uncooked other beef and veal ⁴	0.052	4.1	0.002	1.39	L-Dec.2012	4.2
Pork.....	0.363	-1.6	-0.006	0.75	-	-
Bacon, breakfast sausage, and related products ⁴	0.140	1.4	0.002	1.21	L-Apr.2012	2.0
Bacon and related products ⁵		3.0		2.88	L-Apr.2012	3.3
Breakfast sausage and related products ⁴ . ⁵ ..		0.2		1.86	L-Sep.2012	0.5
Ham.....	0.079	-2.2	-0.002	1.67	S-Dec.2012	-2.3
Ham, excluding canned ⁵		-2.4		2.00	S-Dec.2012	-2.8
Pork chops.....	0.060	-2.2	-0.001	1.30	S-Jan.2013	-2.7
Other pork including roasts and picnics ⁴	0.084	-5.3	-0.005	1.68	L-Feb.2013	-5.0
Other meats.....	0.260	-0.2	-0.001	0.91	L-Feb.2013	-0.2
Frankfurters ⁵		0.0		2.71	S-Dec.2012	-1.2
Lunchmeats ⁴ . ⁵		0.0		0.73	L-Jul.2012	0.4
Lamb and organ meats ⁵		-3.4		2.47	L-Jul.2012	-2.4
Lamb and mutton ⁴ . ⁵		-13.0		4.15	L-Oct.2012	-11.4
Poultry.....	0.347	4.2	0.014	0.92	L-Feb.2013	5.0
Chicken ⁴	0.270	4.4	0.012	1.10	L-Feb.2013	5.0
Fresh whole chicken ⁵		4.0		2.04	L-Jan.2013	5.8
Fresh and frozen chicken parts ⁵		4.8		1.09	L-Feb.2013	6.0
Other poultry including turkey ⁴	0.077	3.4	0.003	1.32	L-Feb.2013	5.1
Fish and seafood.....	0.300	2.3	0.007	0.89	L-Apr.2012	4.5
Fresh fish and seafood ⁴	0.156	3.0	0.005	1.25	L-Feb.2012	3.0
Processed fish and seafood ⁴	0.144	1.5	0.002	1.06	L-Nov.2012	2.4
Shelf stable fish and seafood ⁵		2.2		1.58	S-Feb.2011	0.9

See footnotes at end of table.

Table 7. Consumer Price Index for All Urban Consumers (CPI-U): U.S. city average, by expenditure category, April 2013, 12-month analysis table — Continued
 [1982-84=100, unless otherwise noted]

Expenditure category	Relative importance Mar. 2013	Twelve Month				
		Unadjusted percent change Apr. 2012-Apr. 2013	Unadjusted effect on All Items Apr. 2012-Apr. 2013 ¹	Standard error, median price change ²	Largest (L) or Smallest (S) unadjusted change since: ³	
					Date	Percent change
Frozen fish and seafood ⁵		0.1		2.02	L-Nov.2012	1.0
Eggs.....	0.109	3.1	0.003	1.05	S-Jan.2013	-2.2
Dairy and related products.....	0.887	0.6	0.005	0.49	L-Jun.2012	1.5
Milk ⁴	0.291	1.8	0.005	0.61	L-Dec.2012	1.9
Fresh whole milk ⁵		2.4		0.73	L-Feb.2013	2.9
Fresh milk other than whole ⁴ · ⁵		1.5		0.74	L-Mar.2012	4.1
Cheese and related products.....	0.282	0.4	0.001	0.88	L-Jun.2012	2.0
Ice cream and related products.....	0.134	-0.6	-0.001	1.33	S-Dec.2012	-1.3
Other dairy and related products ⁴	0.180	-0.2	0.000	1.07	L-Jan.2013	0.3
Fruits and vegetables.....	1.281	2.1	0.026	0.52	S-Dec.2012	1.8
Fresh fruits and vegetables.....	0.982	2.9	0.028	0.63	S-Dec.2012	2.3
Fresh fruits.....	0.504	1.4	0.007	0.97	S-Sep.2012	-1.1
Apples.....	0.092	10.3	0.009	2.09	S-Nov.2012	9.9
Bananas.....	0.080	-2.4	-0.002	1.06	S-Oct.2010	-4.0
Citrus fruits ⁴	0.104	1.3	0.001	2.07	S-Nov.2012	-2.1
Oranges, including tangerines ⁵		2.7		2.20	S-Nov.2012	-4.3
Other fresh fruits ⁴	0.228	-0.5	-0.001	1.62	S-Sep.2012	-3.7
Fresh vegetables.....	0.478	4.6	0.021	0.82	S-Jan.2013	2.2
Potatoes.....	0.074	-8.6	-0.007	1.65	L-Feb.2013	-7.6
Lettuce.....	0.072	14.8	0.008	1.83	S-Jan.2013	11.2
Tomatoes.....	0.082	6.7	0.005	1.96	S-Feb.2013	4.6
Other fresh vegetables.....	0.251	6.1	0.014	1.23	S-Jan.2013	2.4
Processed fruits and vegetables ⁴	0.299	-0.5	-0.002	0.66	S-Jan.2011	-0.5
Canned fruits and vegetables ⁴	0.150	-0.8	-0.001	0.92	S-Jan.2011	-0.8
Canned fruits ⁴ · ⁵		2.6		1.28	S-Dec.2012	1.6
Canned vegetables ⁴ · ⁵		-3.2		1.36	S-May 2010	-3.4
Frozen fruits and vegetables ⁴	0.094	0.0	0.000	1.31	L-Jan.2013	0.1
Frozen vegetables ⁵		-0.2		1.60	L-Nov.2012	0.0
Other processed fruits and vegetables including dried ⁴	0.056	-0.7	0.000	1.61	L-Feb.2013	0.4
Dried beans, peas, and lentils ⁴ · ⁵		-3.9		2.36	S-Nov.2010	-4.5
Nonalcoholic beverages and beverage materials.....	0.933	-0.2	-0.002	0.53	L-Dec.2012	-0.2
Juices and nonalcoholic drinks ⁴	0.702	0.9	0.006	0.65	L-Sep.2012	1.1
Carbonated drinks.....	0.287	1.1	0.003	0.90	L-Sep.2012	1.5
Frozen noncarbonated juices and drinks ⁴	0.013	-1.7	0.000	1.80	L-Jan.2013	-0.4
Nonfrozen noncarbonated juices and drinks ⁴	0.401	0.8	0.003	0.86	L-Feb.2013	0.9
Beverage materials including coffee and tea ⁴	0.232	-3.5	-0.008	0.89	S-Apr.1999	-3.9
Coffee.....	0.139	-6.3	-0.009	1.08	S-May 1999	-6.5
Roasted coffee ⁵		-6.8		1.14	S-Mar.2002	-7.5
Instant and freeze dried coffee ⁵		-5.4		1.50	S-Oct.2009	-5.7
Other beverage materials including tea ⁴	0.093	0.9	0.001	1.37	S-Feb.2013	0.7
Other food at home.....	2.254	0.6	0.015	0.42	L-Jan.2013	1.3
Sugar and sweets.....	0.299	-1.8	-0.005	0.91	S-Apr.1982	-2.8
Sugar and artificial sweeteners.....	0.057	-4.0	-0.002	0.99	S-Jun.1982	-4.1
Candy and chewing gum ⁴	0.180	-2.0	-0.004	1.49	S-EVER	-
Other sweets ⁴	0.063	1.2	0.001	1.13	L-Dec.2012	2.3
Fats and oils.....	0.257	-0.8	-0.002	1.02	L-Feb.2013	-0.5
Butter and margarine ⁴	0.075	1.8	0.001	1.12	L-Feb.2012	5.0
Butter ⁵		3.2		1.95	L-Oct.2011	3.5
Margarine ⁵		-0.7		1.55	S-Aug.2010	-1.3
Salad dressing ⁴	0.064	-2.6	-0.002	1.14	L-Feb.2013	-1.3
Other fats and oils including peanut butter ⁴	0.119	-1.3	-0.002	1.99	L-Feb.2013	-0.2
Peanut butter ⁴ · ⁵		-3.8		2.58	S-Mar.2011	-3.9
Other foods.....	1.698	1.3	0.022	0.50	L-Jan.2013	1.6

See footnotes at end of table.

Table 7. Consumer Price Index for All Urban Consumers (CPI-U): U.S. city average, by expenditure category, April 2013, 12-month analysis table — Continued
 [1982-84=100, unless otherwise noted]

Expenditure category	Relative importance Mar. 2013	Twelve Month				
		Unadjusted percent change Apr. 2012-Apr. 2013	Unadjusted effect on All Items Apr. 2012-Apr. 2013 ¹	Standard error, median price change ²	Largest (L) or Smallest (S) unadjusted change since: ³	
					Date	Percent change
Soups.....	0.098	2.3	0.002	1.37	L-Jul.2012	2.9
Frozen and freeze dried prepared foods.....	0.295	-1.4	-0.004	1.12	L-Feb.2013	-1.3
Snacks.....	0.330	3.7	0.012	1.03	L-Dec.2012	3.7
Spices, seasonings, condiments, sauces.....	0.283	0.4	0.001	0.90	L-Jan.2013	1.0
Salt and other seasonings and spices ^{4, 5}		-2.4		1.65	S-Dec.2006	-3.7
Olives, pickles, relishes ^{4, 5}		0.6		1.61	L-Dec.2012	6.5
Sauces and gravies ^{4, 5}		0.7		1.39	L-Jan.2013	1.7
Other condiments ⁵		3.4		1.75	L-Sep.2012	3.4
Baby food ⁴	0.072	2.3	0.002	0.86	L-Dec.2012	2.6
Other miscellaneous foods ⁴	0.620	1.5	0.009	1.04	S-Feb.2013	1.0
Prepared salads ^{6, 5}		5.3		1.41	L-Aug.2012	5.3
Food away from home.....	5.660	2.3	0.131	0.18	—	—
Full service meals and snacks ⁴	2.688	2.5	0.066	0.23	L-Sep.2012	2.5
Limited service meals and snacks ⁴	2.268	2.0	0.046	0.25	S-Apr.2011	2.0
Food at employee sites and schools ⁴	0.261	3.5	0.009	0.60	—	—
Food at elementary and secondary schools ^{7, 5}		3.7		0.76	L-Feb.2013	3.7
Food from vending machines and mobile vendors ⁴	0.082	3.0	0.002	0.84	S-Feb.2013	2.7
Other food away from home ⁴	0.360	2.4	0.009	0.61	L-Sep.2012	2.4
Energy.....	10.081	-4.3	-0.449	0.17	S-Jul.2012	-5.0
Energy commodities.....	6.346	-8.1	-0.545	0.15	S-Oct.2009	-18.7
Fuel oil and other fuels.....	0.334	-6.2	-0.021	0.64	S-Jul.2012	-7.3
Fuel oil.....	0.232	-5.6	-0.013	0.61	S-Jul.2012	-5.6
Propane, kerosene, and firewood ⁶	0.101	-7.4	-0.008	1.17	L-Jun.2012	-7.2
Motor fuel.....	6.013	-8.2	-0.524	0.16	S-Oct.2009	-18.4
Gasoline (all types).....	5.819	-8.3	-0.515	0.16	S-Oct.2009	-17.9
Gasoline, unleaded regular ⁵		-8.7		0.72	S-Oct.2009	-18.3
Gasoline, unleaded midgrade ^{9, 5}		-7.6		0.64	S-Oct.2009	-17.2
Gasoline, unleaded premium ⁵		-6.8		0.63	S-Oct.2009	-16.8
Other motor fuels ⁴	0.193	-4.7	-0.009	0.23	S-Jul.2012	-5.2
Energy services ¹⁰	3.735	2.6	0.097	0.31	L-Feb.2009	5.6
Electricity ¹⁰	2.840	1.1	0.031	0.41	L-Feb.2012	1.9
Utility (piped) gas service ¹⁰	0.895	7.6	0.066	0.49	L-Oct.2008	13.9
All items less food and energy.....	75.746	1.7	1.293	0.11	S-Jun.2011	1.6
Commodities less food and energy commodities.....	19.482	-0.1	-0.010	0.24	S-Jan.2011	-0.2
Household furnishings and supplies ¹¹	3.264	-1.1	-0.036	0.36	—	—
Window and floor coverings and other linens ⁴	0.259	-4.6	-0.013	1.19	L-Feb.2013	-3.8
Floor coverings ⁴	0.037	-4.4	-0.002	1.34	S-Apr.2010	-4.6
Window coverings ⁴	0.076	1.7	0.001	2.26	S-Feb.2013	1.4
Other linens ⁴	0.146	-7.6	-0.012	1.60	L-Feb.2013	-6.5
Furniture and bedding.....	0.704	-0.5	-0.004	0.96	L-Feb.2013	0.0
Bedroom furniture.....	0.229	-1.6	-0.004	1.45	S-Jan.2013	-2.6
Living room, kitchen, and dining room furniture ⁴	0.338	0.3	0.001	1.09	S-Feb.2013	0.3
Other furniture ⁴	0.130	-0.6	-0.001	3.19	L-Feb.2013	0.9
Infants' furniture ^{7, 5}						
Appliances ⁴	0.282	-1.6	-0.004	0.80	S-May 2011	-1.9
Major appliances ⁴	0.164	-1.2	-0.002	1.11	S-Jul.2011	-1.5
Laundry equipment ⁵		-1.2		1.59	S-Jul.2011	-2.2
Other appliances ⁴	0.115	-2.0	-0.002	1.03	S-Oct.2012	-2.0
Other household equipment and furnishings ⁴	0.473	-3.0	-0.015	1.01	S-Oct.2012	-3.6
Clocks, lamps, and decorator items.....	0.242	-6.0	-0.015	1.85	S-Jun.2012	-6.2
Indoor plants and flowers ¹²	0.102	1.2	0.001	1.43	L-Dec.2011	1.3
Dishes and flatware ⁴	0.047	-0.4	0.000	2.69	L-Apr.2009	0.0
Nonelectric cookware and tableware ⁴	0.082	-0.5	0.000	1.38	S-Sep.2012	-1.6

See footnotes at end of table.

Table 7. Consumer Price Index for All Urban Consumers (CPI-U): U.S. city average, by expenditure category, April 2013, 12-month analysis table — Continued
 [1982-84=100, unless otherwise noted]

Expenditure category	Relative importance Mar. 2013	Twelve Month				
		Unadjusted percent change Apr. 2012-Apr. 2013	Unadjusted effect on All Items Apr. 2012-Apr. 2013 ¹	Standard error, median price change ²	Largest (L) or Smallest (S) unadjusted change since: ³	
					Date	Percent change
Tools, hardware, outdoor equipment and supplies ⁴ . . .	0.669	0.0	0.000	0.56	L-Jan.2013	0.1
Tools, hardware and supplies ⁴	0.171	1.4	0.002	0.79	L-Jun.2012	1.4
Outdoor equipment and supplies ⁴	0.354	-0.6	-0.002	0.86	L-Feb.2013	-0.5
Housekeeping supplies.	0.877	-0.1	-0.001	0.49	L-Jan.2013	0.0
Household cleaning products ⁴	0.353	-0.6	-0.002	0.83	L-Sep.2012	-0.2
Household paper products ⁴	0.242	1.7	0.004	0.90	S-Feb.2013	1.3
Miscellaneous household products ⁴	0.282	-0.8	-0.002	0.93	S-Feb.2013	-0.9
Apparel.	3.588	0.3	0.011	1.24	S-Apr.2011	0.1
Men's and boys' apparel.	0.860	1.8	0.016	1.51	L-Feb.2013	2.8
Men's apparel.	0.683	3.3	0.023	1.80	L-Sep.2012	3.4
Men's suits, sport coats, and outerwear.	0.127	5.5	0.007	3.64	L-Feb.2012	5.5
Men's furnishings.	0.182	6.3	0.011	2.22	L-Feb.2013	6.4
Men's shirts and sweaters ⁴	0.209	1.1	0.002	3.78	S-Feb.2013	-0.3
Men's pants and shorts.	0.158	1.3	0.002	5.37	L-Jan.2013	4.1
Boys' apparel.	0.177	-3.9	-0.007	3.27	S-Jul.2010	-4.8
Women's and girls' apparel.	1.525	-1.4	-0.022	2.35	S-Mar.2011	-2.0
Women's apparel.	1.288	-0.3	-0.004	2.33	S-Apr.2011	-0.7
Women's outerwear.	0.091	4.0	0.004	9.60	S-Jan.2013	2.9
Women's dresses.	0.176	-2.6	-0.005	9.85	L-Feb.2013	-0.4
Women's suits and separates ⁴	0.617	-0.1	-0.001	2.68	S-Jun.2011	-0.2
Women's underwear, nightwear, sportswear and accessories ⁴	0.388	-0.4	-0.002	2.45	S-Jan.2013	-0.4
Girls' apparel.	0.237	-7.5	-0.019	5.90	S-Sep.2010	-13.3
Footwear.	0.691	3.2	0.022	1.50	S-Sep.2012	2.6
Men's footwear.	0.214	3.3	0.007	2.16	S-Sep.2012	2.6
Boys' and girls' footwear.	0.151	2.7	0.004	3.03	S-Jan.2013	2.6
Women's footwear.	0.326	3.4	0.011	2.49	—	—
Infants' and toddlers' apparel.	0.194	-2.2	-0.004	1.97	S-Jun.2011	-2.6
Jewelry and watches ⁸	0.318	0.0	0.000	2.79	L-Sep.2012	2.8
Watches ⁸	0.091	2.9	0.003	2.80	S-Nov.2012	0.4
Jewelry ⁸	0.227	-1.2	-0.003	3.25	L-Sep.2012	2.1
Transportation commodities less motor fuel ¹¹	5.520	0.4	0.022	0.19	S-Dec.2012	0.3
New vehicles.	3.163	1.2	0.037	0.29	L-Jan.2013	1.7
New cars and trucks ⁴ . ⁵		1.2		0.25	L-Jan.2013	1.7
New cars ⁵		0.9		0.27	S-Nov.2012	0.8
New trucks ¹³ . ⁵		1.5		0.34	L-Jan.2013	2.0
Used cars and trucks.	1.863	-0.6	-0.012	0.22	S-Jan.2013	-1.3
Motor vehicle parts and equipment.	0.426	-0.7	-0.003	0.43	S-Oct.1999	-0.9
Tires.	0.287	-2.2	-0.006	0.57	S-Apr.1998	-2.9
Vehicle accessories other than tires ⁴	0.139	2.3	0.003	0.61	L-Feb.2013	2.4
Vehicle parts and equipment other than tires ⁵		2.9		0.61	L-Dec.2011	3.0
Motor oil, coolant, and fluids ⁵		0.8		1.00	L-Feb.2013	2.7
Medical care commodities.	1.704	0.7	0.011	0.45	L-Feb.2013	0.8
Medicinal drugs ¹¹	1.625	0.6	0.010	0.47	—	—
Prescription drugs.	1.319	0.6	0.008	0.57	S-Jun.2007	0.4
Nonprescription drugs ¹¹	0.307	0.8	0.003	0.88	L-Jan.2013	0.8
Medical equipment and supplies ¹¹	0.078	1.6	0.001	0.91	L-Jan.2013	1.9
Recreation commodities ¹¹	2.243	-1.5	-0.035	0.46	L-Nov.2012	-1.5
Video and audio products ¹¹	0.384	-8.4	-0.035	0.74	L-Jan.2012	-8.2
Televisions.	0.138	-17.4	-0.029	1.38	S-Dec.2012	-17.5
Other video equipment ⁴	0.025	-6.7	-0.002	1.68	L-EVER	—
Audio equipment.	0.067	-6.2	-0.004	1.40	L-Feb.2013	-4.2
Audio discs, tapes and other media ⁴	0.043	-0.9	0.000	1.25	L-Jan.2013	-0.7
Pets and pet products.	0.685	1.2	0.008	0.81	L-Nov.2012	1.5

See footnotes at end of table.

Table 7. Consumer Price Index for All Urban Consumers (CPI-U): U.S. city average, by expenditure category, April 2013, 12-month analysis table — Continued
 [1982-84=100, unless otherwise noted]

Expenditure category	Relative importance Mar. 2013	Twelve Month				
		Unadjusted percent change Apr. 2012-Apr. 2013	Unadjusted effect on All Items Apr. 2012-Apr. 2013 ¹	Standard error, median price change ²	Largest (L) or Smallest (S) unadjusted change since: ³	
					Date	Percent change
Pet food ⁴ · ⁵		2.9		0.82	L-Dec.2012	2.9
Purchase of pets, pet supplies, accessories ⁴ · ⁵		-1.9		1.73	L-Jan.2013	-1.4
Sporting goods.....	0.452	-0.2	-0.001	0.94	S-Jul.2012	-0.2
Sports vehicles including bicycles.....	0.241	3.0	0.007	0.72	L-Dec.2011	3.7
Sports equipment.....	0.201	-3.9	-0.008	1.82	S-Dec.2011	-4.5
Photographic equipment and supplies.....	0.051	-5.8	-0.003	1.70	S-Jan.2013	-8.1
Film and photographic supplies ⁴ · ⁵						
Photographic equipment ⁴ · ⁵		-7.1		1.97	S-Jan.2013	-9.0
Recreational reading materials.....	0.228	3.9	0.009	1.08	L-Feb.2013	4.1
Newspapers and magazines ⁴	0.127	7.2	0.009	1.21	—	—
Recreational books ⁴	0.097	-0.2	0.000	1.85	L-Feb.2011	0.6
Other recreational goods ⁴	0.444	-2.8	-0.013	1.15	L-Mar.2012	-2.3
Toys.....	0.325	-4.1	-0.014	1.40	L-Mar.2012	-3.3
Toys, games, hobbies and playground equipment ⁴ · ⁵		-1.0		1.67	L-Mar.2012	0.2
Sewing machines, fabric and supplies ⁴	0.060	1.8	0.001	1.95	L-Dec.2012	3.0
Music instruments and accessories ⁴	0.039	2.4	0.001	1.65	S-Feb.2013	1.5
Education and communication commodities ¹¹	0.576	-2.6	-0.016	0.75	L-Oct.2012	-2.4
Educational books and supplies.....	0.212	6.9	0.014	1.00	S-Feb.2013	6.8
College textbooks ¹⁴ · ⁵		7.5		0.94	S-Jun.2012	6.4
Information technology commodities ¹¹	0.365	-7.4	-0.029	1.11	L-Oct.2012	-7.1
Personal computers and peripheral equipment ⁶	0.238	-8.3	-0.022	1.47	L-Oct.2012	-7.8
Computer software and accessories ⁴	0.044	-7.3	-0.003	1.80	S-Jan.2013	-7.8
Telephone hardware, calculators, and other consumer information items ⁴	0.083	-4.9	-0.004	1.82	L-Feb.2013	-4.4
Alcoholic beverages.....	0.946	1.8	0.017	0.32	L-Dec.2012	1.9
Alcoholic beverages at home.....	0.569	1.3	0.008	0.40	L-Jul.2012	1.3
Beer, ale, and other malt beverages at home.....	0.272	1.4	0.004	0.55	L-Dec.2012	1.6
Distilled spirits at home.....	0.072	0.9	0.001	0.69	S-Feb.2013	0.3
Whiskey at home ⁵		1.2		1.29	S-Feb.2013	0.7
Distilled spirits, excluding whiskey, at home ⁵		0.3		0.97	S-Jan.2013	0.3
Wine at home.....	0.226	1.3	0.003	0.70	L-Sep.2009	1.4
Alcoholic beverages away from home.....	0.377	2.6	0.010	0.56	—	—
Beer, ale, and other malt beverages away from home ⁴ · ⁵		2.7		0.44	L-Jun.2011	2.8
Wine away from home ⁴ · ⁵		2.2		1.03	S-Aug.2012	2.2
Distilled spirits away from home ⁴ · ⁵		3.2		1.04	S-Feb.2013	2.3
Other goods ¹¹	1.641	0.9	0.016	0.38	—	—
Tobacco and smoking products.....	0.795	2.6	0.021	0.49	L-Jul.2012	3.1
Cigarettes ⁴	0.735	2.6	0.019	0.54	L-Jul.2012	3.1
Tobacco products other than cigarettes ⁴	0.054	2.1	0.001	0.96	—	—
Personal care products.....	0.643	-0.7	-0.005	0.66	S-Aug.2011	-1.4
Hair, dental, shaving, and miscellaneous personal care products ⁴	0.335	-1.2	-0.004	0.95	S-Feb.2012	-1.4
Cosmetics, perfume, bath, nail preparations and implements.....	0.301	-0.1	0.000	0.89	S-Jan.2013	-0.6
Miscellaneous personal goods ⁴	0.202	-0.2	0.000	1.24	L-Oct.2012	-0.2
Stationery, stationery supplies, gift wrap ⁵		0.3		1.46	L-Oct.2012	0.5
Infants' equipment ⁷ · ⁵		-2.8		1.31	L-Nov.2012	-2.6
Services less energy services.....	56.263	2.3	1.304	0.10	S-Mar.2012	2.3
Shelter.....	31.494	2.2	0.686	0.14	—	—
Rent of shelter ¹⁵	31.141	2.2	0.678	0.14	—	—
Rent of primary residence ¹⁰	6.498	2.7	0.175	0.18	S-Feb.2013	2.7
Lodging away from home ⁴	0.813	1.7	0.014	1.35	L-Jan.2013	1.9
Housing at school, excluding board ¹⁰ · ¹⁵	0.157	4.2	0.006	0.27	S-Feb.2013	4.2

See footnotes at end of table.

Table 7. Consumer Price Index for All Urban Consumers (CPI-U): U.S. city average, by expenditure category, April 2013, 12-month analysis table — Continued
 [1982-84=100, unless otherwise noted]

Expenditure category	Relative importance Mar. 2013	Twelve Month				
		Unadjusted percent change Apr. 2012-Apr. 2013	Unadjusted effect on All Items Apr. 2012-Apr. 2013 ¹	Standard error, median price change ²	Largest (L) or Smallest (S) unadjusted change since: ³	
					Date	Percent change
Other lodging away from home including hotels and motels.....	0.656	1.1	0.007	1.67	L-Jan.2013	1.3
Owners' equivalent rent of residences ^{10, 15}	23.831	2.1	0.489	0.15	—	—
Owners' equivalent rent of primary residence ^{10, 15}	22.424	2.1	0.460	0.15	—	—
Tenants' and household insurance ⁴	0.353	2.4	0.008	0.78	S-Feb.2012	2.1
Water and sewer and trash collection services ⁴	1.201	4.7	0.055	0.73	S-Feb.2012	4.7
Water and sewerage maintenance ¹⁰	0.911	5.2	0.046	0.92	S-Nov.2011	5.2
Garbage and trash collection ¹³	0.290	3.2	0.009	0.71	L-Jun.2009	3.7
Household operations ⁴	0.724	0.9	0.006	0.40	S-Jul.2011	0.8
Domestic services ⁴	0.248	1.3	0.003	0.56	S-May 2012	1.2
Gardening and lawncare services ⁴	0.236	-0.1	0.000	0.46	S-Dec.2010	-0.6
Moving, storage, freight expense ⁴	0.089	0.0	0.000	1.94	L-Jan.2013	2.1
Repair of household items ⁴	0.078	3.7	0.003	0.78	S-Mar.2011	0.4
Medical care services.....	5.454	3.4	0.182	0.27	S-Feb.2012	3.4
Professional services.....	3.001	2.7	0.079	0.31	L-Dec.2010	2.7
Physicians' services ¹⁰	1.606	2.7	0.043	0.56	L-Sep.2012	2.9
Dental services ¹⁰	0.771	3.8	0.028	0.30	L-Nov.2008	3.9
Eyeglasses and eye care ⁸	0.247	0.6	0.001	0.60	S-Feb.2013	0.6
Services by other medical professionals ^{10, 8}	0.376	1.5	0.006	0.37	S-Feb.2013	1.4
Hospital and related services.....	1.795	4.0	0.070	0.39	S-Jul.1999	3.9
Hospital services ^{10, 16}	1.572	4.3	0.065	0.45	S-Aug.1999	4.1
Inpatient hospital services ^{10, 16, 5}		4.0		0.63	S-Nov.2012	3.8
Outpatient hospital services ^{10, 8, 5}		4.5		0.88	S-Aug.2012	4.3
Nursing homes and adult day services ^{10, 16}	0.138	3.1	0.004	0.40	S-Feb.2013	3.0
Care of invalids and elderly at home ⁷	0.085	1.0	0.001	0.54	S-Feb.2013	0.9
Health insurance ⁷	0.658	5.3	0.033	0.33	S-Nov.2011	4.3
Transportation services.....	5.808	2.5	0.146	0.31	S-Nov.2012	2.2
Leased cars and trucks ¹⁴	0.370	-4.1	-0.016	1.13	S-Jan.2013	-4.1
Car and truck rental ⁴	0.070	1.4	0.001	2.28	S-Dec.2012	0.9
Motor vehicle maintenance and repair.....	1.140	1.5	0.017	0.31	L-Aug.2012	1.7
Motor vehicle body work.....	0.057	2.3	0.001	0.37	L-Dec.2012	2.3
Motor vehicle maintenance and servicing.....	0.456	1.6	0.007	0.44	S-Sep.2012	1.5
Motor vehicle repair ⁴	0.591	1.3	0.008	0.48	L-Aug.2012	1.6
Motor vehicle insurance.....	2.466	4.4	0.105	0.50	S-Nov.2012	4.4
Motor vehicle fees ⁴	0.559	1.5	0.008	0.59	L-Dec.2012	2.2
State motor vehicle registration and license fees ^{10, 4}	0.322	0.4	0.001	0.69	L-Aug.2012	0.5
Parking and other fees ⁴	0.215	3.0	0.006	0.96	S-Feb.2013	2.9
Parking fees and tolls ^{4, 5}		3.7		2.88	S-Feb.2013	3.4
Automobile service clubs ^{4, 5}		1.4		0.78	S-Mar.2012	0.9
Public transportation.....	1.203	2.6	0.031	0.79	S-Dec.2012	2.4
Airline fare.....	0.785	1.9	0.015	1.12	S-Nov.2012	0.9
Other intercity transportation.....	0.148	1.1	0.002	1.87	S-Nov.2012	0.1
Intercity bus fare ^{6, 5}				2.26	S-Feb.2013	3.0
Intercity train fare ^{6, 5}		7.4		1.86	L-Jan.2013	-1.2
Ship fare ^{4, 5}		-1.3		0.70	—	—
Intracity transportation.....	0.268	5.5	0.014	1.18	—	—
Intracity mass transit ^{11, 5}		5.8				
Recreation services ¹¹	3.714	2.0	0.072	0.58	S-Nov.2011	1.6
Video and audio services ¹¹	1.520	2.6	0.038	0.81	S-Sep.2011	2.6
Cable and satellite television and radio service ¹³ ..	1.411	3.0	0.042	0.80	S-Nov.2011	2.3
Video discs and other media, including rental of video and audio ⁴	0.108	-3.4	-0.004	2.59	S-Jan.2013	-3.5

See footnotes at end of table.

Table 7. Consumer Price Index for All Urban Consumers (CPI-U): U.S. city average, by expenditure category, April 2013, 12-month analysis table — Continued
 [1982-84=100, unless otherwise noted]

Expenditure category	Relative importance Mar. 2013	Twelve Month				
		Unadjusted percent change Apr. 2012-Apr. 2013	Unadjusted effect on All Items Apr. 2012-Apr. 2013 ¹	Standard error, median price change ²	Largest (L) or Smallest (S) unadjusted change since: ³	
					Date	Percent change
Video discs and other media ^{4, 5}		-5.4		2.84	S-Jan.2013	-5.5
Rental of video or audio discs and other media ^{4, 5}		-3.1		3.24	S-Jul.2003	-5.3
Pet services including veterinary ⁴	0.409	2.5	0.010	0.54	L-Feb.2013	2.5
Pet services ^{4, 5}		2.7		0.59	L-Aug.2012	3.0
Veterinarian services ^{4, 5}		2.6		0.84	—	—
Photographers and film processing ⁴	0.057	0.8	0.000	1.12	L-Nov.2012	1.0
Photographer fees ^{4, 5}		0.1		0.95	S-Jan.2013	0.1
Film processing ^{4, 5}		0.9		0.88	L-Feb.2013	0.9
Other recreation services ⁴	1.727	1.4	0.023	1.05	S-Jan.2013	1.4
Club dues and fees for participant sports and group exercises ⁴	0.564	1.2	0.007	1.53	L-Feb.2013	2.4
Admissions	0.629	1.3	0.008	1.57	S-May 2012	0.6
Admission to movies, theaters, and concerts ^{4, 5}		1.2		1.28	S-May 2012	0.3
Admission to sporting events ^{4, 5}		2.1		1.38	S-Apr.2012	1.9
Fees for lessons or instructions ⁸	0.231	2.3	0.005	0.99	S-Sep.2012	2.2
Education and communication services ¹¹	6.157	1.9	0.113	0.21	S-Dec.2012	1.9
Tuition, other school fees, and childcare	3.039	3.9	0.116	0.36	—	—
College tuition and fees	1.715	4.6	0.076	0.57	L-Feb.2013	4.6
Elementary and high school tuition and fees	0.384	3.5	0.013	0.38	—	—
Child care and nursery school ¹²	0.777	2.7	0.021	0.39	S-Dec.2012	2.7
Technical and business school tuition and fees ⁴	0.059	3.1	0.002	0.94	—	—
Postage and delivery services ⁴	0.156	6.3	0.009	0.10	—	—
Postage	0.145	6.4	0.009	0.10	—	—
Delivery services ⁴	0.011	4.6	0.000	0.52	L-Dec.2012	5.0
Telephone services ⁴	2.366	-0.6	-0.015	0.20	S-Nov.2011	-1.0
Wireless telephone services ⁴	1.420	-2.3	-0.033	0.29	S-Dec.2011	-2.3
Land-line telephone services ¹¹	0.947	1.9	0.018	0.28	S-Dec.2012	1.9
Internet services and electronic information providers ⁴	0.582	0.6	0.004	0.78	S-Jan.2013	-0.5
Other personal services ¹¹	1.710	2.6	0.043	0.36	—	—
Personal care services	0.628	1.9	0.012	0.44	—	—
Haircuts and other personal care services ⁴	0.628	1.9	0.012	0.44	—	—
Miscellaneous personal services	1.082	2.9	0.031	0.48	S-Jan.2013	2.5
Legal services ⁸	0.297	2.8	0.008	1.19	S-Jan.2013	1.7
Funeral expenses ⁸	0.159	2.4	0.004	0.52	S-Feb.2013	2.4
Laundry and dry cleaning services ⁴	0.239	2.3	0.005	0.36	—	—
Apparel services other than laundry and dry cleaning ⁴	0.030	3.5	0.001	0.72	S-Feb.2013	2.8
Financial services ⁸	0.215	4.2	0.009	1.67	—	—
Checking account and other bank services ^{4, 5}		3.0		2.38	L-Jan.2013	4.0
Tax return preparation and other accounting fees ^{4, 5}		2.5		1.66	S-Dec.2012	1.8
Special aggregate indexes						
All items less food	85.827	1.0	0.845	0.10	S-Oct.2009	-0.1
All items less shelter	68.506	0.5	0.378	0.10	S-Oct.2009	-0.6
All items less food and shelter	54.332	0.3	0.159	0.12	S-Oct.2009	-0.6
All items less food, shelter, and energy	44.251	1.4	0.607	0.14	S-Mar.2011	1.4
All items less food, shelter, energy, and used cars and trucks	42.389	1.5	0.619	0.15	S-Apr.2011	1.5
All items less medical care	92.842	0.9	0.870	0.09	S-Jun.2010	0.9
All items less energy	89.919	1.7	1.512	0.09	S-Apr.2011	1.6
Commodities	40.002	-0.8	-0.337	0.13	S-Oct.2009	-1.7

See footnotes at end of table.

Table 7. Consumer Price Index for All Urban Consumers (CPI-U): U.S. city average, by expenditure category, April 2013, 12-month analysis table — Continued
 [1982-84=100, unless otherwise noted]

Expenditure category	Relative importance Mar. 2013	Twelve Month				
		Unadjusted percent change Apr. 2012-Apr. 2013	Unadjusted effect on All Items Apr. 2012-Apr. 2013 ¹	Standard error, median price change ²	Largest (L) or Smallest (S) unadjusted change since: ³	
					Date	Percent change
Commodities less food, energy, and used cars and trucks...	17.620	0.0	0.001	0.26	—	—
Commodities less food.....	25.829	-2.1	-0.556	0.19	S-Oct.2009	-2.3
Commodities less food and beverages.....	24.883	-2.2	-0.573	0.19	S-Oct.2009	-2.5
Services.....	59.998	2.4	1.400	0.11	—	—
Services less rent of shelter ¹⁵	28.857	2.5	0.723	0.14	S-Jan.2013	2.4
Services less medical care services.....	54.544	2.3	1.218	0.12	—	—
Durables.....	8.694	-0.7	-0.066	0.17	S-Oct.2012	-0.8
Nondurables.....	31.308	-0.9	-0.271	0.16	S-Oct.2009	-2.6
Nondurables less food.....	17.135	-2.8	-0.489	0.27	S-Oct.2009	-4.3
Nondurables less food and beverages.....	16.189	-3.0	-0.507	0.29	S-Oct.2009	-4.8
Nondurables less food, beverages, and apparel.....	12.601	-4.0	-0.517	0.15	S-Oct.2009	-6.8
Nondurables less food and apparel.....	13.547	-3.6	-0.500	0.14	S-Oct.2009	-6.0
Housing.....	40.753	1.9	0.786	0.13	—	—
Education and communication ⁴	6.733	1.5	0.098	0.20	S-Dec.2012	1.5
Education ⁴	3.251	4.1	0.130	0.34	—	—
Communication ⁴	3.482	-0.9	-0.032	0.22	S-Dec.2011	-1.1
Information and information processing ⁴	3.327	-1.2	-0.041	0.24	S-Dec.2011	-1.4
Information technology, hardware and services ¹⁷	0.960	-2.7	-0.026	0.68	S-Feb.2013	-2.7
Recreation ⁴	5.957	0.6	0.037	0.43	—	—
Video and audio ⁴	1.904	0.2	0.003	0.68	S-Nov.2011	0.1
Pets, pet products and services ⁴	1.093	1.7	0.019	0.51	L-Nov.2012	2.0
Photography ⁴	0.110	-2.4	-0.003	1.06	S-Feb.2013	-2.5
Food and beverages.....	15.119	1.6	0.236	0.13	L-Feb.2013	1.6
Domestically produced farm food.....	7.200	1.2	0.085	0.21	S-Oct.2012	1.2
Other services.....	11.581	2.0	0.229	0.23	S-Nov.2011	1.9
Apparel less footwear.....	2.897	-0.4	-0.011	1.47	S-Mar.2011	-0.8
Fuels and utilities.....	5.270	2.5	0.130	0.35	L-Nov.2011	3.4
Household energy.....	4.068	1.9	0.075	0.30	L-Nov.2011	3.1
Medical care.....	7.158	2.7	0.194	0.24	S-Mar.2011	2.7
Transportation.....	17.340	-2.0	-0.356	0.13	S-Oct.2009	-3.8
Private transportation.....	16.137	-2.3	-0.387	0.12	S-Oct.2009	-3.8
New and used motor vehicles ⁴	5.534	0.2	0.010	0.21	S-Dec.2012	-0.1
Utilities and public transportation.....	9.916	2.1	0.209	0.22	L-Oct.2011	2.1
Household furnishings and operations.....	3.989	-0.7	-0.030	0.29	S-May 2011	-0.7

See footnotes at end of table.

Table 7. Consumer Price Index for All Urban Consumers (CPI-U): U.S. city average, by expenditure category, April 2013, 12-month analysis table — Continued
 [1982-84=100, unless otherwise noted]

Expenditure category	Relative importance Mar. 2013	Twelve Month				
		Unadjusted percent change Apr. 2012-Apr. 2013	Unadjusted effect on All Items Apr. 2012-Apr. 2013 ¹	Standard error, median price change ²	Largest (L) or Smallest (S) unadjusted change since: ³	
					Date	Percent change
Other goods and services.....	3.351	1.8	0.059	0.27	—	—
Personal care.....	2.556	1.5	0.038	0.33	S-Jan.2013	1.4

1 The 'effect' of an item category is a measure of that item's contribution to the All items price change. For example, if the Food index had an effect of 0.40, and the All items index rose 1.2 percent, then the increase in food prices contributed 0.40 / 1.2, or 33.3 percent, to that All items increase. Said another way, had food prices been unchanged for that year the change in the All items index would have been 1.2 percent minus 0.40, or 0.8 percent. Effects can be negative as well. For example, if the effect of food was a negative 0.1, and the All items index rose 0.5 percent, the All items index actually would have been 0.1 percent higher (or 0.6 percent) had food prices been unchanged. Since food prices fell while prices overall were rising, the contribution of food to the All items price change was negative (in this case, -0.1 / 0.5, or minus 20 percent).

2 A statistic's margin of error is often expressed as its point estimate plus or minus two standard errors. For example, if a CPI category rose 2.6 percent, and its standard error was 0.25 percent, the margin of error on this item's 12-month percent change would be 2.6 percent, plus or minus 0.5 percent.

3 If the current 12-month percent change is greater than the previous published 12-month percent change, then this column identifies the closest prior month with a 12-month percent change as (L)arge as or (L)arger than the current 12-month change. If the current 12-month percent change is smaller than the previous published 12-month percent change, the most recent month with a change as (S)mall or (S)maller than the current month change is identified. If the current and previous published 12-month percent changes are equal, a dash will appear. Standard numerical comparison is used. For example, 2.0% is greater than 0.6%, -4.4% is less than -2.0%, and -2.0% is less than 0.0%. Note that a (L)arger change can be a smaller decline, for example, a -0.2% change is larger than a -0.4% change, but still represents a decline in the price index. Likewise, (S)maller changes can be increases, for example, a 0.6% change is smaller than 0.8%, but still represents an increase in the price index. In this context, a -0.2% change is considered to be smaller than a 0.0% change.

4 Indexes on a December 1997=100 base.

5 Special indexes based on a substantially smaller sample. These series do not contribute to the all items index aggregation and therefore do not have a relative importance or effect.

6 Indexes on a December 2007=100 base.

7 Indexes on a December 2005=100 base.

8 Indexes on a December 1986=100 base.

9 Indexes on a December 1993=100 base.

10 This index series was calculated using a Laspeyres estimator. All other item stratum index series were calculated using a geometric means estimator.

11 Indexes on a December 2009=100 base.

12 Indexes on a December 1990=100 base.

13 Indexes on a December 1983=100 base.

14 Indexes on a December 2001=100 base.

15 Indexes on a December 1982=100 base.

16 Indexes on a December 1996=100 base.

17 Indexes on a December 1988=100 base.

NOTE: Index applies to a month as a whole, not to any specific date.