

Transmission of material in this release is embargoed until 8:30 a.m. (EST) Wednesday, December 16, 2009

USDL-09-1532

Technical information: (202) 691-7000 • Reed.Steve@bls.gov • www.bls.gov/cpi
Media Contact: (202) 691-5902 • PressOffice@bls.gov

CONSUMER PRICE INDEX – NOVEMBER 2009

On a seasonally adjusted basis, the Consumer Price Index for All Urban Consumers (CPI-U) rose 0.4 percent in November, the U.S. Bureau of Labor Statistics reported today. Over the last 12 months the index increased 1.8 percent before seasonal adjustment, the first positive 12-month change since February 2009.

The seasonally adjusted increase in the all items index was due to a 4.1 percent increase in the energy index. The index for gasoline rose sharply and the indexes for electricity, fuel oil, and natural gas also increased, creating the fourth consecutive rise in the energy index and the largest increase since August. In contrast, the index for all items less food and energy was unchanged in November, after ten consecutive monthly increases. Declines in shelter indexes offset increases in the indexes for new and used motor vehicles, medical care, airline fares, and tobacco.

The food index rose slightly in November. As in October, the food away from home index rose modestly while the index for food at home was unchanged. Within the latter, three grocery store food groups posted increases while three declined.

Chart 1. One-month percent change in CPI for All Urban Consumers (CPI-U), seasonally adjusted, Nov. 2008 - Nov. 2009
Percent change

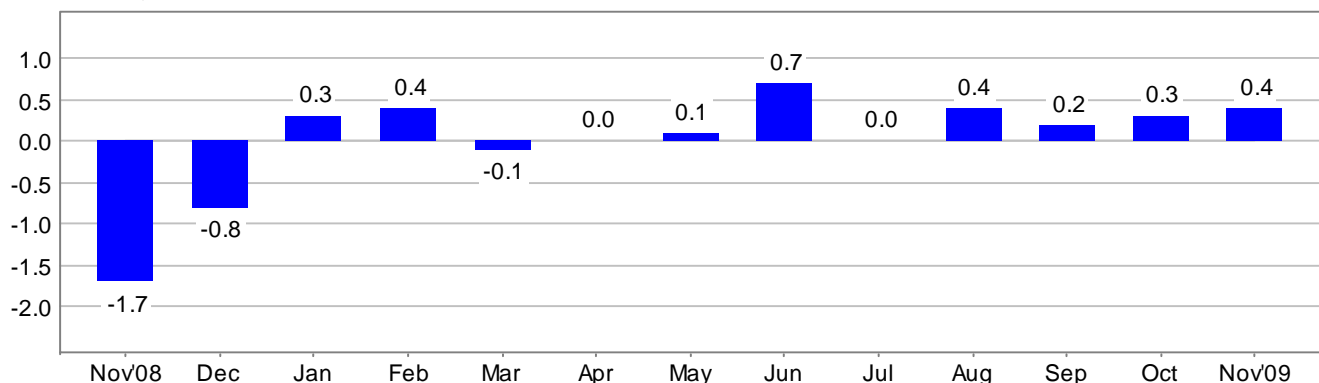


Chart 2. 12-month percent change in CPI for All Urban Consumers (CPI-U), not seasonally adjusted, Nov. 2008 - Nov. 2009

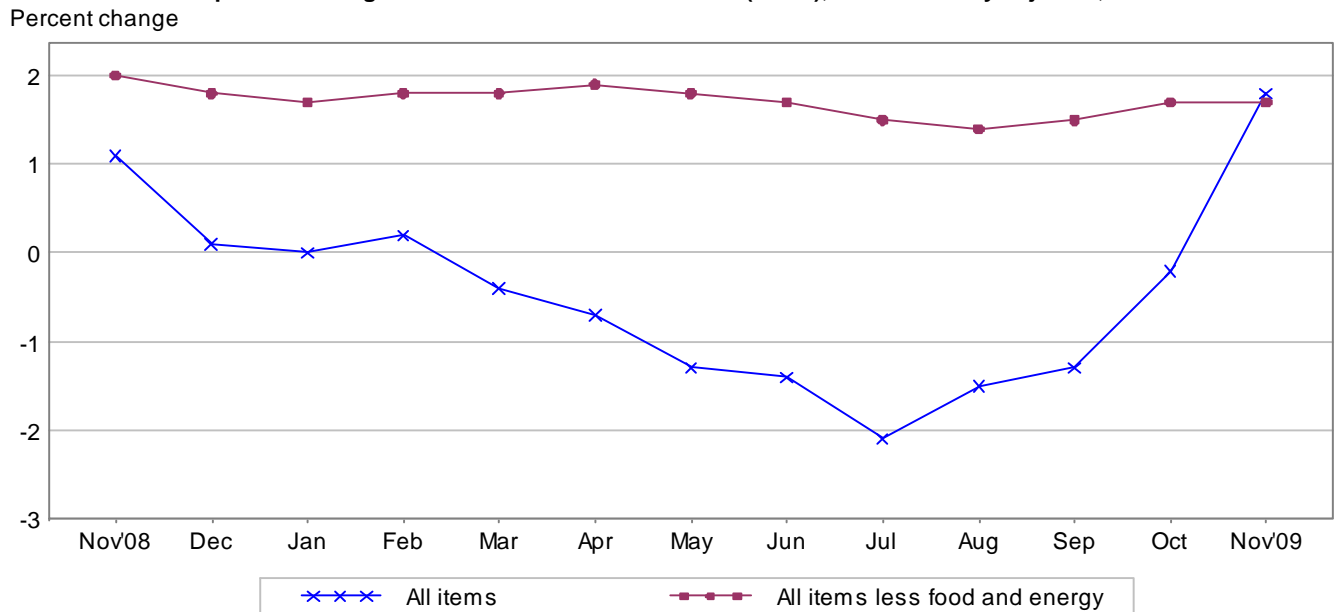


Table A. Percent changes in CPI for All Urban Consumers (CPI-U): U.S. city average

	Seasonally adjusted changes from preceding month							Un-adjusted 12-mos. ended Nov. 2009
	May 2009	June 2009	July 2009	Aug. 2009	Sep. 2009	Oct. 2009	Nov. 2009	
All items1	.7	.0	.4	.2	.3	.4	1.8
Food	-2	.0	-3	.1	-1	.1	.1	-7
Food at home	-5	.0	-5	.0	-3	.0	.0	-2.9
Food away from home ¹1	.1	.1	.1	.1	.1	.2	2.1
Energy2	7.4	-4	4.6	.6	1.5	4.1	7.4
Energy commodities	2.3	16.2	-4	8.5	1.1	1.9	6.3	19.6
Gasoline (all types)	3.1	17.3	-8	9.1	1.0	1.6	6.4	23.6
Fuel oil	-3.3	4.8	-1.5	6.2	1.5	6.3	9.0	-6.9
Energy services	-1.7	-1.2	-3	.0	.1	.9	1.4	-5.1
Electricity	-4	-1.9	-6	-1	.6	.6	1.4	.1
Utility (piped) gas service	-5.7	1.3	.9	.4	-1.7	1.9	1.5	-18.6
All items less food and energy1	.2	.1	.1	.2	.2	.0	1.7
Commodities less food and energy commodities2	.3	.2	-.3	.3	.4	.2	2.6
New vehicles5	.7	.5	-1.3	.4	1.6	.6	4.9
Used cars and trucks	1.0	.9	.0	1.9	1.6	3.4	2.0	5.8
Apparel	-2	.7	.6	-1	.1	-4	-3	1.0
Medical care commodities4	.1	-1	.5	.6	.2	.0	3.8
Services less energy services1	.1	.0	.2	.1	.1	.0	1.4
Shelter1	.1	-2	.1	.0	.0	-.2	.3
Transportation services	-1	-1	.5	.6	.7	.4	.6	3.6
Medical care services3	.2	.3	.2	.4	.2	.4	3.5

¹ Not seasonally adjusted.

Consumer Price Index Data for November 2009

Food

The food index rose 0.1 percent in November, the same increase as in October. The index for food away from home increased 0.2 percent while the food at home index was unchanged. Among the food at home groups, the dairy and related products index declined 0.7 percent in November after rising 1.0 percent in October, and the index for other food at home also declined in November following an October increase. In contrast, the indexes for fruits and vegetables and for meats, poultry, fish, and eggs both increased in November after declining in October. The index for nonalcoholic beverages fell for the second straight month, declining 0.3 percent in November, and the index for cereals and bakery products rose 0.1 percent in November after being unchanged in October. Over the past year, the food index has declined 0.7 percent. The food at home index has fallen 2.9 percent over the last 12 months, with five of the six grocery store food groups declining, but the index for food away from home has risen 2.1 percent.

Energy

The energy index rose 4.1 percent in November after increasing 1.5 percent in October. The index for energy commodities rose 6.3 percent, with the gasoline index increasing 6.4 percent. (Before seasonal adjustment, gasoline prices rose 4.1 percent in November.) The rise in the gasoline index accounted for over three-quarters of the total energy increase. The remainder of the increase was due to advances in all of the other energy components. The index for fuel oil rose 9.0 percent in November following a 6.3 percent increase in October. The index for energy services increased 1.4 percent in November, with the electricity index rising 1.4 percent and the index for natural gas advancing 1.5 percent. The energy index has risen 7.4 percent over the past 12 months, with the gasoline index rising 23.6 percent.

All items less food and energy

The index for all items less food and energy was unchanged in November after rising 0.2 percent in October. The heavily weighted index for shelter, unchanged in October, declined 0.2 percent in November. Within the shelter group, the indexes for rent and owners' equivalent rent both declined 0.1 percent and the lodging away from home index fell 1.5 percent. Also declining in November were the indexes for household furnishings and operations and for apparel, both down 0.3 percent. Several indexes posted increases to offset these declines. The new vehicles index rose 0.6 percent in November, its tenth increase in the last eleven months. The index for used cars and trucks advanced 2.0 percent in November and has now risen 11.1 percent since April. The index for airline fares rose 3.8 percent in November and has increased 13.3 percent since June. The medical care index increased 0.3 percent in November and the index for tobacco advanced 1.0 percent. Over the past 12 months, the index for all items less food and energy has risen 1.7 percent.

Not seasonally adjusted CPI measures

The Consumer Price Index for All Urban Consumers (CPI-U) increased 1.8 percent over the last 12 months to an index level of 216.330 (1982-84=100). For the month, the index increased 0.1 percent prior to seasonal adjustment.

The Consumer Price Index for Urban Wage Earners and Clerical Workers (CPI-W) increased 2.3 percent over the last 12 months to an index level of 212.003 (1982-84=100). For the month, the index increased 0.2 percent prior to seasonal adjustment.

The Chained Consumer Price Index for All Urban Consumers (C-CPI-U) increased 1.6 percent over the last 12 months. For the month, the index was unchanged on a not seasonally adjusted basis. Please note that the indexes for the post-2007 period are subject to revision.

The Consumer Price Index for December 2009 is scheduled to be released on Friday, January 15, 2010, at 8:30 a.m. (EST).

Expenditure Weight Update

Effective with the January 2010 release the Bureau of Labor Statistics (BLS) will update the consumption expenditure weights in the Consumer Price Index for All Urban Consumers (CPI-U) and Consumer Price Index for Urban Wage Earners and Clerical Workers (CPI-W) to the 2007-08 period. The updated expenditure weights for these indexes will replace the 2005-2006 weights that were introduced effective with the January 2008 CPI release. CPI expenditure weights will continue to be updated at two year intervals subsequent to the 2010 updating.

Facilities for Sensory Impaired

Information from this release will be made available to sensory impaired individuals upon request. Voice phone: 202-691-5200, Federal Relay Services: 1-800-877-8339.

Brief Explanation of the CPI

The Consumer Price Index (CPI) is a measure of the average change in prices over time of goods and services purchased by households. The Bureau of Labor Statistics publishes CPIs for two population groups: (1) the CPI for Urban Wage Earners and Clerical Workers (CPI-W), which covers households of wage earners and clerical workers that comprise approximately 32 percent of the total population and (2) the CPI for All Urban Consumers (CPI-U) and the Chained CPI for All Urban Consumers (C-CPI-U), which cover approximately 87 percent of the total population and include in addition to wage earners and clerical worker households, groups such as professional, managerial, and technical workers, the self-employed, short-term workers, the unemployed, and retirees and others not in the labor force.

The CPIs are based on prices of food, clothing, shelter, and fuels, transportation fares, charges for doctors' and dentists' services, drugs, and other goods and services that people buy for day-to-day living. Prices are collected each month in 87 urban areas across the country from about 4,000 housing units and approximately 25,000 retail establishments-department stores, supermarkets, hospitals, filling stations, and other types of stores and service establishments. All taxes directly associated with the purchase and use of items are included in the index. Prices of fuels and a few other items are obtained every month in all 87 locations. Prices of most other commodities and services are collected every month in the three largest geographic areas and every other month in other areas. Prices of most goods and services are obtained by personal visits or telephone calls of the Bureau's trained representatives.

In calculating the index, price changes for the various items in each location are averaged together with weights, which represent their importance in the spending of the appropriate population group. Local data are then combined to obtain a U.S. city average. For the CPI-U and CPI-W separate indexes are also published by size of city, by region of the country, for cross-classifications of regions and population-size classes, and for 27 local areas. Area indexes do not measure differences in the level of prices among cities; they only measure the average change in prices for each area since the base period. For the C-CPI-U data are issued only at the national level. It is important to note that the CPI-U and CPI-W are considered final when released, but the C-CPI-U is issued in preliminary form and subject to two annual revisions.

The index measures price change from a designed reference date. For the CPI-U and the CPI-W the reference base is 1982-84 equals 100.0. The reference base for the C-CPI-U is December 1999 equals 100. An increase of 16.5 percent from the reference base, for example, is shown as 116.5. This change can also be expressed in dollars as follows: the price of a base period market basket of goods and services in the CPI has risen from \$10 in 1982-84 to \$11.65.

For further details visit the CPI home page on the Internet at <http://www.bls.gov/cpi/> or contact our CPI Information and Analysis Section on (202) 691-7000.

Note on Sampling Error in the Consumer Price Index

The CPI is a statistical estimate that is subject to sampling error because it is based upon a sample of retail prices and not the complete universe of all prices. BLS calculates and publishes estimates of the 1-month, 2-month, 6-month and 12-month percent change standard errors annually, for the CPI-U. These standard error estimates can be used to construct confidence intervals for hypothesis testing. For example, the estimated standard error of the 1 month percent change is 0.04 percent for the U.S. All Items Consumer Price Index. This means that if we repeatedly sample from the universe of all retail prices using the same methodology, and estimate a percentage change for each sample, then 95% of these estimates would be within 0.08 percent of the 1 month percentage change based on all retail prices. For example, for a 1-month change of 0.2 percent in the All Items CPI for All Urban Consumers, we are 95 percent confident that the actual percent change based on all retail prices would fall between 0.12 and 0.28 percent. For the latest data, including information on how to use the estimates of standard error, see “Variance Estimates for Price Changes in the Consumer Price Index, January-December 2008”. These data are available on the CPI home page (<http://www.bls.gov/cpi/>), or by using the following link <http://www.bls.gov/cpi/cpivar2008.pdf>

Calculating Index Changes

Movements of the indexes from one month to another are usually expressed as percent changes rather than changes in index points, because index point changes are affected by the level of the index in relation to its base period while percent changes are not. The example below illustrates the computation of index point and percent changes.

Percent changes for 3-month and 6-month periods are expressed as annual rates and are computed according to the standard formula for compound growth rates. These data indicate what the percent change would be if the current rate were maintained for a 12-month period.

Index Point Change

CPI	202.416
Less previous index	201.800
Equals index point change	.616

Percent Change

Index point difference	.616
Divided by the previous index	201.800
Equals	0.003
Results multiplied by one hundred	0.003x100
Equals percent change	0.3

Regions Defined

The states in the four regions shown in Tables 3 and 6 are listed below.

The Northeast--Connecticut, Maine, Massachusetts, New Hampshire, New York, New Jersey, Pennsylvania, Rhode Island, and Vermont.

The Midwest--Illinois, Indiana, Iowa, Kansas, Michigan, Minnesota, Missouri, Nebraska, North Dakota, Ohio, South Dakota, and Wisconsin.

The South--Alabama, Arkansas, Delaware, Florida, Georgia, Kentucky, Louisiana, Maryland, Mississippi, North Carolina, Oklahoma, South Carolina, Tennessee, Texas, Virginia, West Virginia, and the District of Columbia.

The West--Alaska, Arizona, California, Colorado, Hawaii, Idaho, Montana, Nevada, New Mexico, Oregon, Utah, Washington, and Wyoming.

A Note on Seasonally Adjusted and Unadjusted Data

Because price data are used for different purposes by different groups, the Bureau of Labor Statistics publishes seasonally adjusted as well as unadjusted changes each month.

For analyzing general price trends in the economy, seasonally adjusted changes are usually preferred since they eliminate the effect of changes that normally occur at the same time and in about the same magnitude every year--such as price movements resulting from changing climatic conditions, production cycles, model changeovers, holidays, and sales.

The unadjusted data are of primary interest to consumers concerned about the prices they actually pay. Unadjusted data also are used extensively for escalation purposes. Many collective bargaining contract agreements and pension plans, for example, tie compensation changes to the Consumer Price Index before adjustment for seasonal variation.

Seasonal factors used in computing the seasonally adjusted indexes are derived by the X-12-ARIMA Seasonal Adjustment Method. Seasonally adjusted indexes and seasonal factors are computed annually. Each year, the last 5 years of seasonally adjusted data are revised. Data from January 2004 through

December 2008 were replaced in January 2009. Exceptions to the usual revision schedule were: the updated seasonal data at the end of 1977 replaced data from 1967 through 1977; and, in January 2002, dependently seasonally adjusted series were revised for January 1987-December 2001 as a result of a change in the aggregation weights for dependently adjusted series. For further information, please see "Aggregation of Dependently Adjusted Seasonally Adjusted Series," in the October 2001 issue of the CPI Detailed Report.

The seasonal movement of all items and 54 other aggregations is derived by combining the seasonal movement of 73 selected components. Each year the seasonal status of every series is reevaluated based upon certain statistical criteria. If any of the 73 components change their seasonal adjustment status from seasonally adjusted to not seasonally adjusted, not seasonally adjusted data will be used in the aggregation of the dependent series for the last 5 years, but the seasonally adjusted indexes will be used before that period. Note: 47 of the 73 components are seasonally adjusted for 2009.

Seasonally adjusted data, including the all items index levels, are subject to revision for up to five years after their original release. For this reason, BLS advises against the use of these data in escalation agreements.

Effective with the calculation of the seasonal factors for 1990, the Bureau of Labor Statistics has used an enhanced seasonal adjustment procedure called Intervention Analysis Seasonal Adjustment for some CPI series. Intervention Analysis Seasonal Adjustment allows for better estimates of seasonally adjusted data. Extreme values and/or sharp movements which might distort the seasonal pattern are estimated and removed from the data prior to calculation of seasonal factors. Beginning with the calculation of seasonal factors for 1996, X-12-ARIMA software was used for Intervention Analysis Seasonal Adjustment.

For the seasonal factors introduced in January 2009, BLS adjusted 29 series using Intervention Analysis Seasonal Adjustment, including selected food and beverage items, motor fuels, electricity and vehicles. For example, this procedure was used for the Motor fuel series to offset the effects of events such as damage to oil refineries from Hurricane Katrina.

For a complete list of Intervention Analysis Seasonal Adjustment series and explanations, please refer to the article "Intervention Analysis Seasonal Adjustment", located on our website at <http://www.bls.gov/cpi/cpisapage.htm>.

For additional information on seasonal adjustment in the CPI, please write to the Bureau of Labor Statistics, Division of Consumer Prices and Price Indexes, Washington, DC 20212 or contact Jeff Wilson at (202) 691-6968, or by e-mail at Wilson.Jeff@bls.gov. If you have general questions about the CPI, please call our information staff at (202) 691-7000.

Table 1. Consumer Price Index for All Urban Consumers (CPI-U): U.S. city average, by expenditure category and commodity and service group

(1982-84=100, unless otherwise noted)

CPI-U Expenditure category	Relative importance, December 2008	Unadjusted indexes		Unadjusted percent change to Nov. 2009 from—		Seasonally adjusted percent change from—		
		Oct. 2009	Nov. 2009	Nov. 2008	Oct. 2009	Aug. to Sep.	Sep. to Oct.	Oct. to Nov.
All items	100.000	216.177	216.330	1.8	0.1	0.2	0.3	0.4
All items (1967=100)	-	647.570	648.028	-	-	-	-	-
Food and beverages	15.757	217.957	217.733	-.5	-.1	-.1	.1	.1
Food	14.629	217.526	217.265	-.7	-.1	-.1	.1	.1
Food at home	8.156	213.605	212.816	-2.9	-.4	-.3	.0	.0
Cereals and bakery products	1.150	251.421	250.600	-.8	-.3	.3	.0	.1
Meats, poultry, fish, and eggs	1.898	200.597	201.202	-4.0	.3	-1.0	-.2	.3
Dairy and related products ¹910	195.360	193.914	-9.0	-.7	.5	1.0	-.7
Fruits and vegetables	1.194	269.467	269.832	-4.9	.1	-1.2	-.7	.1
Nonalcoholic beverages and beverage materials982	162.885	161.358	-1.0	-.9	.0	-.2	-.3
Other food at home	2.022	191.266	189.640	.2	-.9	.1	.3	-.2
Sugar and sweets300	196.747	198.227	3.4	.8	1.0	.3	.7
Fats and oils241	199.916	196.473	-4.5	-1.7	-.3	-.4	-.3
Other foods	1.481	205.814	203.671	.3	-1.0	-.1	.4	-.3
Other miscellaneous foods ^{1 2}433	122.112	121.263	-1.8	-.7	.2	.0	-.7
Food away from home ¹	6.474	224.224	224.633	2.1	.2	.1	.1	.2
Other food away from home ^{1 2}314	157.056	157.027	2.0	.0	.4	-.2	.0
Alcoholic beverages	1.127	222.232	222.485	2.3	.1	.3	.3	.4
Housing	43.421	216.612	215.808	-.3	-.4	.0	.1	.0
Shelter	33.200	249.474	248.211	.3	-.5	.0	.0	-.2
Rent of primary residence ³	5.957	248.888	248.886	.9	.0	-.1	-.1	-.1
Lodging away from home ²	2.478	133.485	125.426	-6.1	-6.0	1.5	.4	-1.5
Owners' equivalent rent of primary residence ^{3 4 5}	24.433	256.890	256.731	.8	-.1	-.1	.0	-.1
Tenants' and household insurance ^{1 2}333	122.184	122.243	1.7	.0	.3	.0	.0
Fuels and utilities	5.431	207.937	208.955	-3.4	.5	.2	1.2	1.5
Household energy	4.460	184.146	185.165	-5.3	.6	.1	1.3	1.8
Fuel oil and other fuels301	243.936	260.250	-7.7	6.7	1.1	6.0	7.3
Gas (piped) and electricity ³	4.159	188.963	189.166	-5.1	.1	.1	.9	1.4
Water and sewer and trash collection services ²971	164.591	164.962	5.6	.2	.4	.8	.2
Household furnishings and operations	4.790	127.740	127.265	-1.0	-.4	.0	-.5	-.3
Household operations ^{1 2}781	150.184	150.135	.1	.0	.0	-.2	.0
Apparel	3.691	123.998	122.465	1.0	-1.2	.1	-.4	-.3
Men's and boys' apparel923	114.818	113.636	-.5	-1.0	-.8	-.6	-.8
Women's and girls' apparel	1.541	113.838	111.460	.8	-2.1	.3	-.6	-.8
Infants' and toddlers' apparel183	117.300	116.312	.3	-.8	.1	-1.5	-.4
Footwear688	130.333	130.594	3.0	.2	.1	.2	.7
Transportation	15.314	185.362	188.587	8.6	1.7	.8	1.4	2.3
Private transportation	14.189	180.896	184.099	9.2	1.8	.7	1.4	2.3
New and used motor vehicles ²	6.931	95.131	96.039	4.8	1.0	.5	1.7	.8
New vehicles	4.480	137.268	138.831	4.9	1.1	.4	1.6	.6
Used cars and trucks	1.628	132.689	134.173	5.8	1.1	1.6	3.4	2.0
Motor fuel	3.164	219.015	228.050	21.8	4.1	1.1	1.6	6.2
Gasoline (all types)	2.964	218.683	227.665	23.6	4.1	1.0	1.6	6.4
Motor vehicle parts and equipment ¹382	133.650	134.234	1.0	.4	-.1	.2	.4
Motor vehicle maintenance and repair ¹	1.188	245.393	245.511	2.7	.0	.4	.4	.0
Public transportation	1.125	241.060	244.226	.3	1.3	2.1	.9	2.6
Medical care	6.390	378.552	379.575	3.5	.3	.4	.2	.3
Medical care commodities	1.625	308.379	308.546	3.8	.1	.6	.2	.0
Medical care services	4.765	400.015	401.392	3.5	.3	.4	.2	.4
Professional services	2.702	321.381	321.473	2.6	.0	.4	.2	.2
Hospital and related services ³	1.545	575.540	581.603	7.1	1.1	.6	.2	.8

See footnotes at end of table.

Table 1. Consumer Price Index for All Urban Consumers (CPI-U): U.S. city average, by expenditure category and commodity and service group-Continued

(1982-84=100, unless otherwise noted)

CPI-U Expenditure category	Relative importance, December 2008	Unadjusted indexes		Unadjusted percent change to Nov. 2009 from—		Seasonally adjusted percent change from—		
		Oct. 2009	Nov. 2009	Nov. 2008	Oct. 2009	Aug. to Sep.	Sep. to Oct.	Oct. to Nov.
Expenditure category								
Recreation ²	5.741	114.157	113.820	-0.2	-0.3	-0.1	-0.4	-0.2
Video and audio ²	1.822	100.178	100.199	-1.6	.0	-7	-6	.3
Education and communication ²	6.301	129.128	128.845	2.5	-2	.1	.2	.0
Education ²	3.107	195.849	195.649	4.8	-1	.0	.3	.2
Educational books and supplies221	494.435	495.660	7.1	.2	.3	.2	.9
Tuition, other school fees, and childcare	2.886	563.352	562.623	4.6	-1	.0	.3	.2
Communication ²	3.194	85.055	84.768	.2	-3	.2	.0	-3
Information and information processing ^{1 2}	3.022	81.978	81.688	.0	-4	.2	.0	-4
Telephone services ^{1 2}	2.408	102.891	102.528	1.0	-4	.3	-1	-4
Information technology, hardware and services ^{1 6}614	9.501	9.467	-4.1	-4	-3	.4	-4
Personal computers and peripheral equipment ^{1 7}214	78.213	78.077	-12.3	-2	-7	.3	-2
Other goods and services	3.386	375.444	376.702	7.9	.3	.3	.3	.4
Tobacco and smoking products ¹776	773.758	781.538	30.3	1.0	1.0	.3	1.0
Personal care	2.610	205.406	205.575	1.3	.1	.0	.2	.2
Personal care products ¹651	162.257	161.753	.5	-3	-1	-1	-3
Personal care services ¹647	228.465	228.358	1.0	.0	.3	.1	.0
Miscellaneous personal services	1.074	347.834	348.792	2.5	.3	-2	.9	.6
Commodity and service group								
Commodities	39.556	172.252	173.061	3.2	.5	.3	.5	.9
Food and beverages	15.757	217.957	217.733	-.5	-1	-1	.1	.1
Commodities less food and beverages	23.799	148.037	149.245	5.6	.8	.4	.8	1.4
Nondurables less food and beverages	13.289	185.759	187.776	8.3	1.1	.4	-8	2.8
Apparel	3.691	123.998	122.465	1.0	-1.2	.1	-4	-3
Nondurables less food, beverages, and apparel	9.598	228.344	232.649	11.0	1.9	.4	-9	3.9
Durables	10.510	110.684	111.159	1.8	.4	.4	1.1	.4
Services	60.444	259.844	259.323	.9	-2	.1	.1	.1
Rent of shelter ⁴	32.867	260.035	258.704	.3	-5	.1	.0	-2
Tenants' and household insurance ^{1 2}333	122.184	122.243	1.7	.0	.3	.0	.0
Gas (piped) and electricity ³	4.159	188.963	189.166	-5.1	.1	.1	.9	1.4
Water and sewer and trash collection services ²971	164.591	164.962	5.6	.2	.4	.8	.2
Household operations ^{1 2}781	150.184	150.135	.1	.0	.0	-2	.0
Transportation services	5.567	254.449	255.935	3.6	.6	.7	.4	.6
Medical care services	4.765	400.015	401.392	3.5	.3	.4	.2	.4
Other services	11.002	307.011	306.740	2.2	-1	.0	.1	.1
Special indexes								
All items less food	85.371	215.986	216.207	2.3	.1	.2	.3	.5
All items less shelter	66.800	205.567	206.286	2.6	.3	.3	.4	.7
All items less medical care	93.610	208.131	208.250	1.7	.1	.2	.3	.4
Commodities less food	24.926	150.663	151.847	5.4	.8	.4	.7	1.3
Nondurables less food	14.416	187.939	189.852	7.9	1.0	.4	-7	2.6
Nondurables less food and apparel	10.726	226.717	230.622	10.2	1.7	.4	-8	3.4
Nondurables	29.046	202.058	203.035	3.7	.5	.1	-3	1.3
Services less rent of shelter ⁴	27.577	279.545	280.014	1.7	.2	.3	.3	.4
Services less medical care services	55.679	248.692	248.075	.7	-2	.1	.2	.1
Energy	7.624	199.198	204.026	7.4	2.4	.6	1.5	4.1
All items less energy	92.376	219.624	219.291	1.3	-2	.1	.2	.0
All items less food and energy	77.746	220.731	220.384	1.7	-2	.2	.2	.0
Commodities less food and energy commodities	21.461	143.857	143.871	2.6	.0	.3	.4	.2
Energy commodities	3.465	221.749	231.226	19.6	4.3	1.1	1.9	6.3
Services less energy services	56.285	267.081	266.488	1.4	-2	.1	.1	.0
Purchasing power of the consumer dollar (1982-84=\$1.00)	-	\$.463	\$.462	-	-	-	-	-
Purchasing power of the consumer dollar (1967=\$1.00)	-	\$.154	\$.154	-	-	-	-	-

¹ Not seasonally adjusted.
² Indexes on a December 1997=100 base.
³ This index series was calculated using a Laspeyres estimator. All other item stratum index series were calculated using a geometric means estimator.
⁴ Indexes on a December 1982=100 base.
⁵ This index series will undergo a change in composition in January, 2010. The expenditure class will include weight from secondary residences, and

will be re-titled Owners' equivalent rent of residences. The item stratum Owners' equivalent rent of primary residences, which prior to January, 2010 is identical to the EC, will be published as well.
⁶ Indexes on a December 1988=100 base.
⁷ Indexes on a December 2007=100 base.
 - Data not available.
 NOTE: Index applies to a month as a whole, not to any specific date.

Table 2. Consumer Price Index for All Urban Consumers (CPI-U): Seasonally adjusted U.S. city average, by expenditure category and commodity and service group

(1982-84=100, unless otherwise noted)

CPI-U Expenditure category	Seasonally adjusted indexes				Seasonally adjusted annual rate percent change for					
					3 months ended—			6 months ended—		
	Aug. 2009	Sep. 2009	Oct. 2009	Nov. 2009	Feb. 2009	May 2009	Aug. 2009	Nov. 2009	May 2009	Nov. 2009
All items	215.428	215.791	216.385	217.250	-0.5	-0.2	4.9	3.4	-0.4	4.2
Food and beverages	217.829	217.670	217.830	218.011	.1	-2.0	-.2	.3	-1.0	.0
Food	217.478	217.257	217.377	217.511	.0	-2.2	-.5	.1	-1.1	-2
Food at home	213.951	213.298	213.338	213.257	-2.8	-5.5	-1.8	-1.3	-4.1	-1.5
Cereals and bakery products	251.049	251.711	251.814	252.151	.1	-4.2	-.9	1.8	-2.1	.4
Meats, poultry, fish, and eggs	202.601	200.583	200.128	200.815	-1.5	-6.9	-4.0	-3.5	-4.3	-3.7
Dairy and related products ¹	192.381	193.353	195.360	193.914	-15.1	-15.6	-7.3	3.2	-15.4	-2.2
Fruits and vegetables	273.410	270.064	268.276	268.645	-9.6	-3.4	.5	-6.8	-6.5	-3.2
Nonalcoholic beverages and beverage materials	163.008	162.981	162.638	162.133	-1.5	-.8	.4	-2.1	-1.2	-.9
Other food at home	190.494	190.598	191.178	190.887	4.0	-3.6	-.3	.8	.1	.3
Sugar and sweets	194.991	197.000	197.535	198.855	10.0	-1.3	-2.7	8.2	4.2	2.6
Fats and oils	200.546	199.971	199.118	198.430	-7.7	-7.5	1.5	-4.2	-7.6	-1.3
Other foods	204.958	204.773	205.645	205.047	4.8	-3.5	-.1	.2	.6	.0
Other miscellaneous foods ^{1 2}	121.892	122.099	122.112	121.263	-3.1	.8	-3.0	-2.0	-1.1	-2.5
Food away from home ¹	223.675	224.003	224.224	224.633	3.5	1.9	1.2	1.7	2.7	1.4
Other food away from home ^{1 2}	156.697	157.302	157.056	157.027	2.0	1.0	4.2	.8	1.5	2.5
Alcoholic beverages	221.072	221.709	222.394	223.175	1.8	.8	2.7	3.9	1.3	3.3
Housing	216.726	216.770	216.964	216.918	.0	-1.0	-.6	.4	-.5	-.1
Shelter	249.658	249.655	249.678	249.122	.7	1.3	.0	-.9	1.0	-.4
Rent of primary residence ³	249.266	249.132	248.868	248.682	2.6	1.9	.1	-.9	2.2	-.4
Lodging away from home ²	132.411	134.342	134.890	132.806	-13.2	-6.9	-5.0	1.2	-10.1	-2.0
Owners' equivalent rent of primary residence ^{3 4 5}	257.278	256.911	256.900	256.582	1.8	2.1	.4	-1.1	2.0	-.3
Tenants' and household insurance ^{1 2}	121.830	122.170	122.184	122.243	1.5	.1	3.7	1.4	.8	2.5
Fuels and utilities	206.783	207.172	209.580	212.681	-4.8	-16.1	-2.1	11.9	-10.6	4.6
Household energy	183.374	183.627	185.931	189.255	-6.2	-20.6	-4.3	13.5	-13.7	4.2
Fuel oil and other fuels	231.023	233.497	247.530	265.477	-41.5	-41.1	20.9	74.4	-41.3	45.2
Gas (piped) and electricity ³	188.839	188.979	190.725	193.374	-2.9	-19.0	-5.8	10.0	-11.3	1.8
Water and sewer and trash collection services ²	162.756	163.402	164.675	164.990	2.4	7.0	7.6	5.6	4.7	6.6
Household furnishings and operations	128.471	128.455	127.790	127.445	.9	1.3	-2.9	-3.2	1.1	-3.0
Household operations ^{1 2}	150.494	150.437	150.184	150.135	.4	-1.8	2.8	-1.0	-.7	.9
Apparel	120.756	120.931	120.505	120.097	3.9	-2.3	4.8	-2.2	.7	1.3
Men's and boys' apparel	113.938	112.991	112.329	111.473	16.1	-5.9	-2.2	-8.4	4.5	-5.3
Women's and girls' apparel	109.390	109.688	109.020	108.138	.3	-2.6	10.6	-4.5	-1.2	2.8
Infants' and toddlers' apparel	116.235	116.350	114.644	114.155	-3.7	1.3	11.4	-7.0	-1.2	1.8
Footwear	127.504	127.603	127.894	128.799	.5	3.1	4.3	4.1	1.8	4.2
Transportation	183.312	184.750	187.276	191.582	-7.4	-2.6	30.1	19.3	-5.0	24.6
Private transportation	179.110	180.352	182.877	187.044	-6.5	-2.0	31.6	18.9	-4.3	25.1
New and used motor vehicles ²	93.155	93.605	95.229	96.038	1.7	3.7	1.3	13.0	2.7	7.0
New vehicles	135.030	135.574	137.777	138.654	3.1	6.4	-.7	11.2	4.7	5.0
Used cars and trucks	126.157	128.153	132.456	135.093	-11.9	-3.1	11.4	31.5	-7.6	21.0
Motor fuel	220.836	223.273	226.932	241.049	-28.4	-16.8	160.2	42.0	-22.8	92.2
Gasoline (all types)	220.967	223.146	226.688	241.196	-26.6	-14.1	160.4	42.0	-20.6	92.3
Motor vehicle parts and equipment ¹	133.531	133.406	133.650	134.234	3.5	.7	-2.4	2.1	2.1	-.2
Motor vehicle maintenance and repair ¹	243.494	244.493	245.393	245.511	4.5	1.3	1.7	3.4	2.9	2.5
Public transportation	234.384	239.281	241.437	247.709	-18.4	-10.5	11.3	24.8	-14.5	17.8
Medical care	376.919	378.555	379.229	380.284	4.3	3.5	2.7	3.6	3.9	3.2
Medical care commodities	306.029	308.016	308.780	308.873	5.6	3.6	2.1	3.8	4.6	2.9
Medical care services	398.742	400.180	400.797	402.252	3.8	3.5	2.9	3.6	3.7	3.2
Professional services	320.262	321.405	322.067	322.625	2.4	2.8	2.2	3.0	2.6	2.6
Hospital and related services ³	572.422	575.812	577.133	581.557	8.5	6.9	6.4	6.5	7.7	6.5

See footnotes at end of table.

Table 2. Consumer Price Index for All Urban Consumers (CPI-U): Seasonally adjusted U.S. city average, by expenditure category and commodity and service group-Continued

(1982-84=100, unless otherwise noted)

CPI-U Expenditure category	Seasonally adjusted indexes				Seasonally adjusted annual rate percent change for					
					3 months ended—			6 months ended—		
	Aug. 2009	Sep. 2009	Oct. 2009	Nov. 2009	Feb. 2009	May 2009	Aug. 2009	Nov. 2009	May 2009	Nov. 2009
Recreation ²	114.731	114.585	114.155	113.937	1.0	-1.6	2.4	-2.7	-0.3	-0.2
Video and audio ²	101.530	100.824	100.191	100.491	-1.9	-6	.2	-4.0	-1.2	-2.0
Education and communication ²	127.967	128.074	128.285	128.226	3.3	3.1	2.5	.8	3.2	1.7
Education ²	192.686	192.711	193.313	193.780	5.1	5.9	5.8	2.3	5.5	4.1
Educational books and supplies	489.280	490.667	491.662	495.958	4.5	5.7	13.0	5.6	5.1	9.2
Tuition, other school fees, and childcare	554.000	553.955	555.733	556.799	5.1	6.0	5.3	2.0	5.5	3.7
Communication ²	84.909	85.040	85.054	84.771	1.6	.5	-7	-6	1.1	-7
Information and information processing ^{1 2}	81.835	81.969	81.978	81.688	1.6	-1	-1.0	-7	.8	-9
Telephone services ^{1 2}	102.674	102.968	102.891	102.528	1.4	1.5	1.6	-6	1.4	.5
Information technology, hardware and services ^{1 6}	9.499	9.467	9.501	9.467	2.4	-5.9	-10.8	-1.3	-1.9	-6.2
Personal computers and peripheral equipment ^{1 7}	78.576	77.997	78.213	78.077	-5.7	-14.3	-24.8	-2.5	-10.1	-14.4
Other goods and services	373.425	374.442	375.427	377.051	2.0	22.3	4.6	3.9	11.7	4.3
Tobacco and smoking products ¹	763.634	771.089	773.758	781.538	8.1	114.7	13.2	9.7	52.3	11.4
Personal care	204.899	204.919	205.394	205.839	.3	1.5	1.6	1.8	.9	1.7
Personal care products ¹	162.476	162.372	162.257	161.753	3.8	1.3	-1.4	-1.8	2.6	-1.6
Personal care services ¹	227.580	228.286	228.465	228.358	-5	3.1	.0	1.4	1.3	.7
Miscellaneous personal services	345.448	344.770	347.750	349.831	.4	.3	4.4	5.2	.3	4.8
Commodity and service group										
Commodities	171.236	171.666	172.529	174.046	-2.9	-6	10.6	6.7	-1.8	8.7
Food and beverages	217.829	217.670	217.830	218.011	.1	-2.0	-.2	.3	-1.0	.0
Commodities less food and beverages	146.689	147.347	148.472	150.490	-4.8	.4	18.0	10.8	-2.3	14.3
Nondurables less food and beverages	185.567	186.349	184.873	190.103	-5.8	-4.8	39.4	10.1	-5.3	23.9
Apparel	120.756	120.931	120.505	120.097	3.9	-2.3	4.8	-2.2	.7	1.3
Nondurables less food, beverages, and apparel	230.120	231.087	228.965	237.827	-8.7	-5.3	54.0	14.1	-7.0	32.5
Durables	109.238	109.714	110.882	111.316	-1.3	2.2	-1.2	7.8	.4	3.2
Services	259.344	259.617	259.979	260.154	1.3	.0	1.1	1.3	.6	1.2
Rent of shelter ⁴	260.033	260.233	260.293	259.821	.6	1.1	-.2	-.3	.9	-3
Tenants' and household insurance ^{1 2}	121.830	122.170	122.184	122.243	1.5	.1	3.7	1.4	.8	2.5
Gas (piped) and electricity ³	188.839	188.979	190.725	193.374	-2.9	-19.0	-5.8	10.0	-11.3	1.8
Water and sewer and trash collection services ²	162.756	163.402	164.675	164.990	2.4	7.0	7.6	5.6	4.7	6.6
Household operations ^{1 2}	150.494	150.437	150.184	150.135	.4	-1.8	2.8	-1.0	-.7	.9
Transportation services	251.455	253.146	254.265	255.797	2.7	.6	4.1	7.1	1.6	5.6
Medical care services	398.742	400.180	400.797	402.252	3.8	3.5	2.9	3.6	3.7	3.2
Other services	305.733	305.795	305.965	306.142	2.8	1.5	4.1	.5	2.2	2.3
Special indexes										
All items less food	215.123	215.582	216.253	217.238	-6	.1	5.8	4.0	-.2	4.9
All items less shelter	204.437	204.951	205.779	207.221	-1.0	-1.0	7.4	5.6	-1.0	6.5
All items less medical care	207.422	207.735	208.320	209.170	-.8	-.5	5.0	3.4	-.6	4.2
Commodities less food	149.315	149.975	151.091	153.080	-4.6	.4	17.3	10.5	-2.1	13.8
Nondurables less food	187.699	188.493	187.110	191.970	-5.0	-4.4	36.3	9.4	-4.7	22.1
Nondurables less food and apparel	228.214	229.166	227.347	235.089	-7.2	-5.1	48.5	12.6	-6.2	29.3
Nondurables	201.800	202.076	201.442	204.139	-2.0	-4.0	17.4	4.7	-3.0	10.9
Services less rent of shelter ⁴	277.946	278.770	279.601	280.784	2.1	-2.0	2.5	4.1	.0	3.3
Services less medical care services	248.063	248.397	248.834	249.009	1.1	-.6	.8	1.5	.2	1.2
Energy	199.667	200.959	203.889	212.326	-17.4	-18.9	57.1	27.9	-18.1	41.7
All items less energy	218.743	219.012	219.367	219.450	1.2	1.6	1.1	1.3	1.4	1.2
All items less food and energy	219.692	220.053	220.453	220.527	1.5	2.3	1.4	1.5	1.9	1.5
Commodities less food and energy commodities	142.179	142.624	143.240	143.505	1.2	4.4	1.0	3.8	2.8	2.4
Energy commodities	222.805	225.260	229.490	243.900	-29.4	-18.7	148.5	43.6	-24.2	88.9
Services less energy services	266.543	266.830	267.058	266.992	1.6	1.5	1.6	.7	1.5	1.1

¹ Not seasonally adjusted.

² Indexes on a December 1997=100 base.

³ This index series was calculated using a Laspeyres estimator. All other item stratum index series were calculated using a geometric means estimator.

⁴ Indexes on a December 1982=100 base.

⁵ This index series will undergo a change in composition in January,

2010. The expenditure class will include weight from secondary residences, and will be re-titled Owners' equivalent rent of residences. The item stratum Owners' equivalent rent of primary residences, which prior to January, 2010 is identical to the EC, will be published as well.

⁶ Indexes on a December 1988=100 base.

⁷ Indexes on a December 2007=100 base.

NOTE: Index applies to a month as a whole, not to any specific date.

Table 3. Consumer Price Index for All Urban Consumers (CPI-U): Selected areas, all items index

(1982-84=100, unless otherwise noted)

CPI-U	Pricing schedule 1	All items									
		Indexes				Percent change to Nov.2009 from—			Percent change to Oct.2009 from—		
		Aug. 2009	Sep. 2009	Oct. 2009	Nov. 2009	Nov. 2008	Sep. 2009	Oct. 2009	Oct. 2008	Aug. 2009	Sep. 2009
U.S. city average	M	215.834	215.969	216.177	216.330	1.8	0.2	0.1	-0.2	0.2	0.1
Region and area size²											
Northeast urban	M	230.883	231.200	231.304	231.708	2.0	.2	.2	.2	.2	.0
Size A - More than 1,500,000	M	233.314	233.695	233.415	233.785	1.8	.0	.2	.1	.0	-.1
Size B/C - 50,000 to 1,500,000 ³	M	136.598	136.691	137.348	137.646	2.4	.7	.2	.5	.5	.5
Midwest urban	M	205.632	205.601	205.706	206.247	2.2	.3	.3	-.2	.0	.1
Size A - More than 1,500,000	M	206.591	206.459	206.625	207.277	2.1	.4	.3	-.2	.0	.1
Size B/C - 50,000 to 1,500,000 ³	M	131.748	131.812	131.724	131.952	2.3	.1	.2	-.2	.0	-.1
Size D - Nonmetropolitan (less than 50,000)	M	201.823	201.918	202.499	203.047	2.6	.6	.3	.2	.3	.3
South urban	M	209.000	208.912	209.292	209.738	2.0	.4	.2	-.4	.1	.2
Size A - More than 1,500,000	M	211.436	211.212	211.152	211.424	1.3	.1	.1	-.7	-.1	.0
Size B/C - 50,000 to 1,500,000 ³	M	132.729	132.722	133.035	133.342	2.3	.5	.2	-.2	.2	.2
Size D - Nonmetropolitan (less than 50,000)	M	210.899	210.911	212.423	213.372	3.2	1.2	.4	-.3	.7	.7
West urban	M	219.884	220.294	220.447	219.728	1.2	-.3	-.3	-.3	.3	.1
Size A - More than 1,500,000	M	224.072	224.412	224.372	223.489	1.2	-.4	-.4	-.3	.1	.0
Size B/C - 50,000 to 1,500,000 ³	M	132.756	133.128	133.618	133.335	1.4	.2	-.2	-.1	.6	.4
Size classes											
A ⁴	M	197.614	197.724	197.670	197.697	1.6	.0	.0	-.2	.0	.0
B/C ³	M	133.069	133.165	133.489	133.663	2.1	.4	.1	-.1	.3	.2
D	M	208.369	208.503	209.139	209.567	2.3	.5	.2	-.3	.4	.3
Selected local areas⁵											
Chicago-Gary-Kenosha, IL-IN-WI	M	211.441	211.345	211.708	212.206	1.5	.4	.2	-.8	.1	.2
Los Angeles-Riverside-Orange County, CA ...	M	224.507	225.226	225.264	224.317	.9	-.4	-.4	-.4	.3	.0
New York-Northern N.J.-Long Island, NY-NJ-CT-PA	M	238.282	238.568	238.380	238.777	1.8	.1	.2	.0	.0	-.1
Boston-Brockton-Nashua, MA-NH-ME-CT	1	-	236.596	-	236.589	1.8	.0	-	-	-	-
Cleveland-Akron, OH	1	-	201.836	-	201.471	1.7	-.2	-	-	-	-
Dallas-Fort Worth, TX	1	-	201.802	-	201.958	1.0	.1	-	-	-	-
Washington-Baltimore, DC-MD-VA-WV ⁶	1	-	140.945	-	140.718	1.6	-.2	-	-	-	-
Atlanta, GA	2	203.351	-	201.068	-	-	-	-	-2.6	-1.1	-
Detroit-Ann Arbor-Flint, MI	2	204.673	-	205.079	-	-	-	-	-.1	.2	-
Houston-Galveston-Brazoria, TX	2	191.687	-	191.608	-	-	-	-	.2	.0	-
Miami-Fort Lauderdale, FL	2	221.306	-	222.416	-	-	-	-	-.6	.5	-
Philadelphia-Wilmington-Atlantic City, PA-NJ-DE-MD	2	226.039	-	224.787	-	-	-	-	-.1	-.6	-
San Francisco-Oakland-San Jose, CA	2	225.801	-	226.051	-	-	-	-	.1	.1	-
Seattle-Tacoma-Bremerton, WA	2	227.138	-	226.277	-	-	-	-	.2	-.4	-

¹ Foods, fuels, and several other items priced every month in all areas; most other goods and services priced as indicated:

M - Every month.

1 - January, March, May, July, September, and November.

2 - February, April, June, August, October, and December.

² Regions defined as the four Census regions. See technical notes.

³ Indexes on a December 1996=100 base.

⁴ Indexes on a December 1986=100 base.

⁵ In addition, the following metropolitan areas are published semiannually and appear in Tables 34 and 39 of the January and July issues of the CPI Detailed Report: Anchorage, AK; Cincinnati-Hamilton, OH-KY-IN; Denver-Boulder-Greeley, CO; Honolulu, HI; Kansas City, MO-KS; Milwaukee-Racine, WI; Minneapolis-St. Paul, MN-WI; Phoenix-Mesa, AZ; Pittsburgh, PA; Portland-Salem, OR-WA; St. Louis, MO-IL; San Diego, CA;

Tampa-St. Petersburg-Clearwater, FL.

⁶ Indexes on a November 1996=100 base.

- Data not available.

NOTE: Local area indexes are byproducts of the national CPI program. Each local index has a smaller sample size than the national index and is, therefore, subject to substantially more sampling and other measurement error. As a result, local area indexes show greater volatility than the national index, although their long-term trends are similar. Therefore, the Bureau of Labor Statistics strongly urges users to consider adopting the national average CPI for use in their escalator clauses.

NOTE: Index applies to a month as a whole, not to any specific date.

Table 4. Consumer Price Index for Urban Wage Earners and Clerical Workers (CPI-W): U.S. city average, by expenditure category and commodity and service group

(1982-84=100, unless otherwise noted)

CPI-W Expenditure category	Relative importance, December 2008	Unadjusted indexes		Unadjusted percent change to Nov. 2009 from—		Seasonally adjusted percent change from—		
		Oct. 2009	Nov. 2009	Nov. 2008	Oct. 2009	Aug. to Sep.	Sep. to Oct.	Oct. to Nov.
All items	100.000	211.549	212.003	2.3	0.2	0.2	0.3	0.5
All items (1967=100)	-	630.140	631.491	-	-	-	-	-
Food and beverages	16.942	217.123	216.853	-6	-1	-1	.1	.1
Food	15.865	216.654	216.305	-8	-2	-1	.1	.0
Food at home	9.201	212.396	211.488	-3.0	-4	-3	.1	-1
Cereals and bakery products	1.249	252.049	251.376	-8	-3	.2	.1	.2
Meats, poultry, fish, and eggs	2.315	200.210	200.709	-4.1	.2	-1.1	-1	.3
Dairy and related products ¹992	194.120	192.695	-9.2	-7	.5	1.1	-7
Fruits and vegetables	1.266	267.084	267.049	-5.1	.0	-1.1	-7	-1
Nonalcoholic beverages and beverage materials	1.167	162.456	160.619	-1.1	-1.1	.0	-1	-4
Other food at home	2.212	190.630	188.868	.1	-9	.0	.3	-2
Sugar and sweets304	195.752	197.031	3.4	.7	1.0	.2	.8
Fats and oils274	200.759	197.400	-4.6	-1.7	-3	-2	-4
Other foods	1.634	205.929	203.664	.3	-1.1	-1	.4	-4
Other miscellaneous foods ^{1 2}472	122.676	121.647	-1.8	-8	.2	.1	-8
Food away from home ¹	6.664	224.382	224.815	2.1	.2	.1	.1	.2
Other food away from home ^{1 2}233	156.909	156.853	2.2	.0	.2	-1	.0
Alcoholic beverages	1.077	222.555	223.445	2.7	.4	.0	.3	.6
Housing	41.313	212.734	212.327	-1	-2	.0	.1	.0
Shelter	31.224	242.804	242.159	.6	-3	.0	.0	-2
Rent of primary residence ³	8.279	247.422	247.361	.8	.0	-1	-1	-1
Lodging away from home ²	1.209	134.586	127.061	-5.0	-5.6	1.5	.5	-1.2
Owners' equivalent rent of primary residence ^{3 4 5}	21.430	232.761	232.635	.8	-1	-1	.0	-1
Tenants' and household insurance ^{1 2}306	122.761	122.830	1.9	.1	.3	.1	.1
Fuels and utilities	6.030	206.732	207.530	-3.3	.4	.3	1.0	1.4
Household energy	4.996	182.227	182.994	-5.2	.4	.2	1.1	1.7
Fuel oil and other fuels283	246.153	262.340	-7.5	6.6	.8	6.2	7.0
Gas (piped) and electricity ³	4.713	187.473	187.572	-5.0	.1	.2	.8	1.4
Water and sewer and trash collection services ²	1.035	165.123	165.509	5.6	.2	.4	.8	.2
Household furnishings and operations	4.059	123.995	123.448	-8	-4	.2	-5	-3
Household operations ^{1 2}360	153.368	152.747	.3	-4	.0	-2	-4
Apparel	3.979	123.642	122.228	.9	-1.1	.2	-6	-4
Men's and boys' apparel	1.024	115.381	114.091	-5	-1.1	-7	-1.0	-1.0
Women's and girls' apparel	1.568	113.290	111.039	.4	-2.0	.7	-1.1	-8
Infants' and toddlers' apparel249	119.949	119.272	.6	-6	.3	-1.7	-3
Footwear840	130.596	130.682	3.2	.1	-1	.3	.4
Transportation	17.067	183.506	186.928	9.4	1.9	.8	1.6	2.5
Private transportation	16.284	180.271	183.680	9.8	1.9	.7	1.6	2.5
New and used motor vehicles ²	7.627	93.414	94.338	5.1	1.0	.7	2.1	1.1
New vehicles	4.057	138.422	139.952	4.9	1.1	.4	1.6	.7
Used cars and trucks	2.863	133.458	134.977	5.8	1.1	1.5	3.4	2.0
Motor fuel	4.029	219.733	228.871	21.9	4.2	1.0	1.8	6.2
Gasoline (all types)	3.770	219.509	228.598	23.7	4.1	.8	1.7	6.3
Motor vehicle parts and equipment ¹482	133.764	134.346	.9	.4	-1	.2	.4
Motor vehicle maintenance and repair ¹	1.242	247.811	247.972	2.7	.1	.4	.4	.1
Public transportation784	239.729	242.698	.9	1.2	1.9	.9	2.4
Medical care	5.355	379.072	380.295	3.7	.3	.5	.1	.3
Medical care commodities	1.320	299.742	299.972	3.8	.1	.6	.2	.1
Medical care services	4.035	402.075	403.695	3.6	.4	.4	.1	.4
Professional services	2.234	324.284	324.382	2.7	.0	.4	.2	.2
Hospital and related services ³	1.338	573.069	580.048	7.4	1.2	.7	.1	.9

See footnotes at end of table.

Table 4. Consumer Price Index for Urban Wage Earners and Clerical Workers (CPI-W): U.S. city average, by expenditure category and commodity and service group-Continued

(1982-84=100, unless otherwise noted)

CPI-W Expenditure category	Relative importance, December 2008	Unadjusted indexes		Unadjusted percent change to Nov. 2009 from—		Seasonally adjusted percent change from—		
		Oct. 2009	Nov. 2009	Nov. 2008	Oct. 2009	Aug. to Sep.	Sep. to Oct.	Oct. to Nov.
Expenditure category								
Recreation ²	5.454	110.724	110.401	-0.4	-0.3	-0.2	-0.4	-0.2
Video and audio ²	1.982	100.639	100.681	-1.3	.0	-7	-6	.3
Education and communication ²	6.221	124.362	124.100	2.0	-2	.1	.1	-1
Education ²	2.527	192.774	192.776	4.7	.0	.3	.3	.4
Educational books and supplies219	497.534	498.627	7.1	.2	.4	.1	.8
Tuition, other school fees, and childcare	2.308	542.284	542.174	4.5	.0	.0	.4	.3
Communication ²	3.694	87.786	87.468	.2	-4	.2	.0	-4
Information and information processing ^{1 2}	3.568	85.651	85.331	.0	-4	.2	.0	-4
Telephone services ^{1 2}	2.965	102.818	102.413	.8	-4	.3	-1	-4
Information technology, hardware and services ^{1 6}604	9.995	9.969	-3.8	-3	-4	.2	-3
Personal computers and peripheral equipment ^{1 7}202	77.939	77.926	-12.1	.0	-8	.1	.0
Other goods and services	3.668	401.390	403.178	11.2	.4	.4	.2	.5
Tobacco and smoking products ¹	1.267	778.650	786.541	30.5	1.0	1.0	.3	1.0
Personal care	2.401	203.115	203.245	1.1	.1	.0	.2	.2
Personal care products ¹662	162.242	161.784	.5	-3	-1	.0	-3
Personal care services ¹580	228.683	228.614	1.0	.0	.3	.1	.0
Miscellaneous personal services947	349.283	350.046	2.1	.2	-1	.6	.4
Commodity and service group								
Commodities	42.689	174.550	175.563	3.9	.6	.3	.6	1.0
Food and beverages	16.942	217.123	216.853	-6	-1	-1	.1	.1
Commodities less food and beverages	25.747	151.760	153.273	6.8	1.0	.6	.9	1.6
Nondurables less food and beverages	14.587	193.394	195.926	9.9	1.3	.4	-9	2.9
Apparel	3.979	123.642	122.228	.9	-1.1	.2	-6	-4
Nondurables less food, beverages, and apparel	10.609	241.005	246.085	13.1	2.1	.4	-1.1	4.1
Durables	11.160	110.988	111.575	2.3	.5	.6	1.4	.6
Services	57.311	254.847	254.663	1.0	-1	.1	.1	.1
Rent of shelter ⁴	30.918	234.064	233.436	.6	-3	.0	.0	-1
Tenants' and household insurance ^{1 2}306	122.761	122.830	1.9	.1	.3	.1	.1
Gas (piped) and electricity ³	4.713	187.473	187.572	-5.0	.1	.2	.8	1.4
Water and sewer and trash collection services ²	1.035	165.123	165.509	5.6	.2	.4	.8	.2
Household operations ^{1 2}360	153.368	152.747	.3	-4	.0	-2	-4
Transportation services	5.512	254.408	255.871	4.0	.6	.6	.5	.4
Medical care services	4.035	402.075	403.695	3.6	.4	.4	.1	.4
Other services	10.432	293.938	293.624	1.9	-1	.0	.0	.0
Special indexes								
All items less food	84.135	210.462	211.055	2.8	.3	.2	.4	.6
All items less shelter	68.776	202.441	203.301	3.0	.4	.3	.5	.8
All items less medical care	94.645	204.680	205.106	2.2	.2	.2	.3	.5
Commodities less food	26.824	154.147	155.650	6.6	1.0	.5	.9	1.6
Nondurables less food	15.664	195.196	197.644	9.5	1.3	.3	-9	2.7
Nondurables less food and apparel	11.686	238.355	243.061	12.3	2.0	.4	-1.0	3.8
Nondurables	31.530	205.647	206.876	4.5	.6	.1	-3	1.4
Services less rent of shelter ⁴	26.392	246.851	247.237	1.5	.2	.3	.3	.4
Services less medical care services	53.275	244.258	243.991	.8	-1	.1	.2	.1
Energy	9.024	199.223	204.196	8.4	2.5	.6	1.5	4.2
All items less energy	90.976	213.998	213.895	1.6	.0	.1	.2	.1
All items less food and energy	75.111	213.840	213.787	2.1	.0	.2	.2	.1
Commodities less food and energy commodities	22.513	145.439	145.595	3.4	.1	.4	.5	.3
Energy commodities	4.311	221.910	231.371	20.2	4.3	1.0	2.0	6.2
Services less energy services	52.598	262.196	261.979	1.5	-1	.1	.1	.0
Purchasing power of the consumer dollar (1982-84=\$1.00)	-	\$. 473	\$. 472	-	-	-	-	-
Purchasing power of the consumer dollar (1967=\$1.00)	-	\$. 159	\$. 158	-	-	-	-	-

¹ Not seasonally adjusted.
² Indexes on a December 1997=100 base.
³ This index series was calculated using a Laspeyres estimator. All other item stratum index series were calculated using a geometric means estimator.
⁴ Indexes on a December 1984=100 base
⁵ This index series will undergo a change in composition in January, 2010. The expenditure class will include weight from secondary residences, and

will be re-titled Owners' equivalent rent of residences. The item stratum Owners' equivalent rent of primary residences, which prior to January, 2010 is identical to the EC, will be published as well.
⁶ Indexes on a December 1988=100 base.
⁷ Indexes on a December 2007=100 base.
 - Data not available.
 NOTE: Index applies to a month as a whole, not to any specific date.

Table 5. Consumer Price Index for Urban Wage Earners and Clerical Workers (CPI-W): Seasonally adjusted U.S. city average, by expenditure category and commodity and service group

(1982-84=100, unless otherwise noted)

CPI-W	Seasonally adjusted indexes				Seasonally adjusted annual rate percent change for					
					3 months ended—			6 months ended—		
	Aug. 2009	Sep. 2009	Oct. 2009	Nov. 2009	Feb. 2009	May 2009	Aug. 2009	Nov. 2009	May 2009	Nov. 2009
Expenditure category										
All items	210.758	211.136	211.842	212.929	-0.8	-0.1	6.2	4.2	-0.5	5.2
Food and beverages	217.045	216.778	217.027	217.157	-2	-2.1	-3	.2	-1.1	-1
Food	216.610	216.317	216.531	216.578	-3	-2.4	-6	-1	-1.3	-3
Food at home	212.744	212.018	212.185	211.957	-3.1	-5.3	-1.9	-1.5	-4.2	-1.7
Cereals and bakery products	251.677	252.195	252.524	252.985	-5	-3.9	-1.0	2.1	-2.2	.6
Meats, poultry, fish, and eggs	202.128	199.912	199.773	200.285	-1.4	-7.1	-4.3	-3.6	-4.3	-4.0
Dairy and related products ¹	191.048	192.048	194.120	192.695	-16.2	-15.4	-7.3	3.5	-15.8	-2.0
Fruits and vegetables	270.988	268.099	266.270	266.091	-10.5	-3.1	.9	-7.0	-6.9	-3.1
Nonalcoholic beverages and beverage materials	162.465	162.444	162.244	161.516	-1.7	-1	-5	-2.3	-9	-1.4
Other food at home	189.945	189.934	190.529	190.114	3.6	-3.5	.0	.4	.0	.2
Sugar and sweets	194.039	195.992	196.328	197.971	8.8	-1.5	-1.4	8.4	3.5	3.4
Fats and oils	201.203	200.499	200.113	199.349	-7.8	-8.0	1.4	-3.6	-7.9	-1.1
Other foods	205.196	204.911	205.775	204.972	4.7	-3.1	.1	-4	.7	-2
Other miscellaneous foods ^{1 2}	122.217	122.496	122.676	121.647	-2.7	.4	-2.9	-1.9	-1.1	-2.4
Food away from home ¹	223.789	224.102	224.382	224.815	3.7	1.8	1.3	1.8	2.7	1.6
Other food away from home ^{1 2}	156.769	157.132	156.909	156.853	2.8	-3	6.3	.2	1.2	3.2
Alcoholic beverages	221.978	222.073	222.843	224.207	1.7	2.0	3.0	4.1	1.8	3.5
Housing	212.823	212.863	213.063	213.168	.4	-1.1	-.5	.7	-.3	.1
Shelter	243.044	242.930	242.918	242.551	1.4	1.6	.1	-.8	1.5	-.3
Rent of primary residence ³	247.869	247.669	247.420	247.158	2.5	1.9	.0	-1.1	2.2	-.6
Lodging away from home ²	133.451	135.480	136.095	134.437	-12.0	-7.0	-3.7	3.0	-9.5	-.4
Owners' equivalent rent of primary residence ^{3 4 5}	233.061	232.761	232.770	232.516	1.8	2.0	.4	-.9	1.9	-.3
Tenants' and household insurance ^{1 2}	122.254	122.644	122.761	122.830	1.2	.7	3.7	1.9	.9	2.8
Fuels and utilities	205.839	206.356	208.463	211.374	-4.3	-16.0	-1.9	11.2	-10.4	4.4
Household energy	181.747	182.153	184.089	187.167	-5.6	-20.3	-3.9	12.5	-13.2	3.9
Fuel oil and other fuels	233.552	235.480	250.133	267.530	-39.6	-40.0	17.0	72.2	-39.8	41.9
Gas (piped) and electricity ³	187.525	187.880	189.323	191.886	-3.0	-19.0	-5.0	9.6	-11.3	2.1
Water and sewer and trash collection services ²	163.201	163.808	165.178	165.484	2.2	7.1	7.6	5.7	4.6	6.7
Household furnishings and operations	124.347	124.592	124.011	123.581	.5	2.2	-3.4	-2.4	1.3	-2.9
Household operations ^{1 2}	153.667	153.648	153.368	152.747	-2	-4	4.5	-2.4	-.3	1.0
Apparel	120.672	120.949	120.228	119.712	4.1	-2.6	5.5	-3.1	.7	1.1
Men's and boys' apparel	114.936	114.131	113.038	111.949	18.0	-6.9	-.9	-10.0	4.8	-5.5
Women's and girls' apparel	108.852	109.649	108.460	107.620	-.5	-4.3	11.7	-4.5	-2.5	3.3
Infants' and toddlers' apparel	118.857	119.258	117.261	116.909	-3.2	2.6	9.9	-6.4	-.3	1.4
Footwear	128.063	127.912	128.352	128.802	1.6	3.6	5.1	2.3	2.6	3.7
Transportation	181.285	182.716	185.612	190.266	-8.9	-3.4	35.1	21.3	-6.2	28.0
Private transportation	178.196	179.519	182.415	186.999	-8.5	-3.2	36.2	21.3	-5.9	28.5
New and used motor vehicles ²	90.936	91.560	93.467	94.479	-1.1	2.2	3.5	16.5	.5	9.8
New vehicles	136.112	136.675	138.886	139.797	3.2	5.8	-.3	11.3	4.5	5.4
Used cars and trucks	126.950	128.878	133.216	135.889	-12.0	-2.8	11.8	31.3	-7.5	21.1
Motor fuel	221.467	223.652	227.788	241.798	-28.1	-16.7	159.4	42.1	-22.6	92.0
Gasoline (all types)	221.758	223.578	227.480	241.747	-25.8	-14.0	159.5	41.2	-20.1	91.4
Motor vehicle parts and equipment ¹	133.587	133.504	133.764	134.346	3.5	.5	-2.5	2.3	2.0	-.1
Motor vehicle maintenance and repair ¹	245.871	246.850	247.811	247.972	4.6	1.3	1.4	3.5	2.9	2.4
Public transportation	233.494	237.928	240.111	245.825	-17.7	-9.3	13.1	22.9	-13.6	17.9
Medical care	377.444	379.213	379.750	380.969	4.4	3.8	2.8	3.8	4.1	3.3
Medical care commodities	297.712	299.487	300.144	300.393	5.5	3.8	2.2	3.7	4.7	2.9
Medical care services	400.673	402.384	402.852	404.459	4.0	3.7	3.0	3.8	3.9	3.4
Professional services	322.955	324.248	324.921	325.479	2.6	2.9	2.1	3.2	2.8	2.7
Hospital and related services ³	570.031	573.743	574.505	579.457	8.6	7.5	6.9	6.8	8.0	6.8

See footnotes at end of table.

Table 5. Consumer Price Index for Urban Wage Earners and Clerical Workers (CPI-W): Seasonally adjusted U.S. city average, by expenditure category and commodity and service group-Continued

(1982-84=100, unless otherwise noted)

CPI-W	Seasonally adjusted indexes				Seasonally adjusted annual rate percent change for					
					3 months ended—			6 months ended—		
	Aug. 2009	Sep. 2009	Oct. 2009	Nov. 2009	Feb. 2009	May 2009	Aug. 2009	Nov. 2009	May 2009	Nov. 2009
Expenditure category										
Recreation ²	111.415	111.147	110.717	110.513	1.3	-1.3	1.7	-3.2	0.0	-0.8
Video and audio ²	101.924	101.243	100.681	100.943	-1.5	-4	.6	-3.8	-9	-1.6
Education and communication ²	123.479	123.601	123.757	123.682	2.8	2.4	2.2	.7	2.6	1.4
Education ²	189.859	189.872	190.521	191.213	4.5	5.5	5.9	2.9	5.0	4.4
Educational books and supplies	491.859	493.984	494.705	498.822	4.9	5.2	12.7	5.8	5.1	9.2
Tuition, other school fees, and childcare	533.890	533.704	535.632	537.333	4.5	5.6	5.2	2.6	5.0	3.9
Communication ²	87.664	87.807	87.785	87.470	1.6	.3	-2	-9	.9	-6
Information and information processing ^{1 2}	85.532	85.676	85.651	85.331	1.6	.0	-4	-9	.8	-7
Telephone services ^{1 2}	102.613	102.896	102.818	102.413	1.3	1.3	1.5	-8	1.3	.4
Information technology, hardware and services ^{1 6}	10.012	9.975	9.995	9.969	2.9	-6.4	-9.7	-1.7	-1.8	-5.8
Personal computers and peripheral equipment ^{1 7}	78.480	77.835	77.939	77.926	-4.5	-15.5	-23.9	-2.8	-10.1	-14.0
Other goods and services	398.801	400.504	401.414	403.435	3.0	34.4	5.5	4.7	17.6	5.1
Tobacco and smoking products ¹	768.483	776.198	778.650	786.541	8.3	116.5	12.6	9.7	53.1	11.2
Personal care	202.705	202.795	203.135	203.463	.3	1.5	1.1	1.5	.9	1.3
Personal care products ¹	162.415	162.312	162.242	161.784	3.9	1.4	-1.7	-1.5	2.7	-1.6
Personal care services ¹	227.751	228.480	228.683	228.614	-6	3.1	-1	1.5	1.2	.7
Miscellaneous personal services	347.691	347.345	349.308	350.699	.1	1.0	3.8	3.5	.5	3.7
Commodity and service group										
Commodities	173.366	173.885	174.960	176.765	-3.8	-2	13.0	8.1	-2.0	10.5
Food and beverages	217.045	216.778	217.027	217.157	-2	-2.1	-3	.2	-1.1	-1
Commodities less food and beverages	150.154	150.983	152.366	154.809	-6.0	.9	22.1	13.0	-2.6	17.5
Nondurables less food and beverages	193.645	194.337	192.499	197.997	-5.1	-3.0	45.1	9.3	-4.0	25.9
Apparel	120.672	120.949	120.228	119.712	4.1	-2.6	5.5	-3.1	.7	1.1
Nondurables less food, beverages, and apparel	243.283	244.219	241.553	251.487	-8.7	-2.7	61.5	14.2	-5.7	35.8
Durables	108.994	109.657	111.148	111.782	-2.8	1.4	.5	10.6	-7	5.5
Services	254.480	254.679	255.014	255.269	1.6	.0	1.1	1.2	.8	1.2
Rent of shelter ⁴	234.179	234.254	234.207	233.955	1.2	1.5	.0	-4	1.4	-2
Tenants' and household insurance ^{1 2}	122.254	122.644	122.761	122.830	1.2	.7	3.7	1.9	.9	2.8
Gas (piped) and electricity ³	187.525	187.880	189.323	191.886	-3.0	-19.0	-5.0	9.6	-11.3	2.1
Water and sewer and trash collection services ²	163.201	163.808	165.178	165.484	2.2	7.1	7.6	5.7	4.6	6.7
Household operations ^{1 2}	153.667	153.648	153.368	152.747	-2	-4	4.5	-2.4	-3	1.0
Transportation services	251.654	253.079	254.314	255.433	3.9	1.7	4.1	6.1	2.8	5.1
Medical care services	400.673	402.384	402.852	404.459	4.0	3.7	3.0	3.8	3.9	3.4
Other services	293.179	293.119	293.183	293.238	2.4	1.4	3.8	.1	1.9	1.9
Special indexes										
All items less food	209.541	210.036	210.827	212.095	-9	.3	7.5	5.0	-3	6.2
All items less shelter	201.265	201.826	202.802	204.433	-1.7	-9	9.0	6.4	-1.3	7.7
All items less medical care	203.921	204.253	204.958	206.033	-1.1	-3	6.4	4.2	-7	5.3
Commodities less food	152.561	153.374	154.747	157.172	-5.7	1.0	21.3	12.6	-2.4	16.9
Nondurables less food	195.417	196.084	194.368	199.584	-4.4	-2.8	42.1	8.8	-3.6	24.4
Nondurables less food and apparel	240.380	241.279	238.966	247.953	-7.6	-2.8	56.1	13.2	-5.2	33.0
Nondurables	205.614	205.775	205.065	207.993	-2.1	-3.2	20.1	4.7	-2.7	12.2
Services less rent of shelter ⁴	245.730	246.381	247.071	248.031	2.0	-2.3	2.6	3.8	-2	3.2
Services less medical care services	243.823	244.068	244.456	244.706	1.3	-6	1.0	1.5	.4	1.2
Energy	199.863	201.160	204.183	212.732	-17.6	-18.5	62.1	28.4	-18.1	44.2
All items less energy	213.027	213.292	213.715	213.885	1.3	2.1	1.4	1.6	1.7	1.5
All items less food and energy	212.680	213.059	213.524	213.720	1.6	3.0	1.8	2.0	2.3	1.9
Commodities less food and energy commodities	143.376	143.992	144.772	145.230	.7	5.8	2.0	5.3	3.2	3.6
Energy commodities	223.093	225.279	229.848	244.063	-28.7	-18.1	150.3	43.2	-23.6	89.3
Services less energy services	261.781	261.962	262.166	262.150	2.1	1.8	1.7	.6	1.9	1.1

¹ Not seasonally adjusted.

² Indexes on a December 1997=100 base.

³ This index series was calculated using a Laspeyres estimator. All other item stratum index series were calculated using a geometric means estimator.

⁴ Indexes on a December 1984=100 base

⁵ This index series will undergo a change in composition in January,

2010. The expenditure class will include weight from secondary residences, and will be re-titled Owners' equivalent rent of residences. The item stratum Owners' equivalent rent of primary residences, which prior to January, 2010 is identical to the EC, will be published as well.

⁶ Indexes on a December 1988=100 base.

⁷ Indexes on a December 2007=100 base.

NOTE: Index applies to a month as a whole, not to any specific date.

Table 6. Consumer Price Index for Urban Wage Earners and Clerical Workers (CPI-W): Selected areas, all items index

(1982-84=100, unless otherwise noted)

CPI-W	Pricing schedule 1	All items									
		Indexes				Percent change to Nov.2009 from—			Percent change to Oct.2009 from—		
		Aug. 2009	Sep. 2009	Oct. 2009	Nov. 2009	Nov. 2008	Sep. 2009	Oct. 2009	Oct. 2008	Aug. 2009	Sep. 2009
U.S. city average	M	211.156	211.322	211.549	212.003	2.3	0.3	0.2	-0.3	0.2	0.1
Region and area size²											
Northeast urban	M	227.598	228.158	228.193	229.048	2.4	.4	.4	.2	.3	.0
Size A - More than 1,500,000	M	228.472	229.067	228.720	229.541	2.2	.2	.4	.1	.1	-.2
Size B/C - 50,000 to 1,500,000 ³	M	137.109	137.400	137.959	138.527	2.8	.8	.4	.3	.6	.4
Midwest urban	M	200.723	200.658	200.781	201.553	2.7	.4	.4	-.2	.0	.1
Size A - More than 1,500,000	M	200.710	200.566	200.730	201.626	2.5	.5	.4	-.3	.0	.1
Size B/C - 50,000 to 1,500,000 ³	M	131.481	131.497	131.420	131.823	2.8	.2	.3	-.2	.0	-.1
Size D - Nonmetropolitan (less than 50,000)	M	199.404	199.416	200.053	200.748	2.9	.7	.3	.0	.3	.3
South urban	M	205.867	205.726	206.121	206.859	2.5	.6	.4	-.6	.1	.2
Size A - More than 1,500,000	M	208.995	208.677	208.577	209.161	1.7	.2	.3	-1.0	-.2	.0
Size B/C - 50,000 to 1,500,000 ³	M	131.302	131.284	131.621	132.129	2.8	.6	.4	-.3	.2	.3
Size D - Nonmetropolitan (less than 50,000)	M	211.088	210.922	212.368	213.396	3.7	1.2	.5	-.6	.6	.7
West urban	M	213.988	214.490	214.718	214.228	1.6	-.1	-.2	-.4	.3	.1
Size A - More than 1,500,000	M	216.539	217.000	217.002	216.286	1.5	-.3	-.3	-.3	.2	.0
Size B/C - 50,000 to 1,500,000 ³	M	132.407	132.773	133.244	133.149	1.9	.3	-.1	-.3	.6	.4
Size classes											
A ⁴	M	195.796	195.957	195.895	196.187	1.9	.1	.1	-.4	.1	.0
B/C ³	M	132.341	132.450	132.764	133.139	2.6	.5	.3	-.2	.3	.2
D	M	206.271	206.341	207.120	207.739	2.8	.7	.3	-.4	.4	.4
Selected local areas⁵											
Chicago-Gary-Kenosha, IL-IN-WI	M	204.246	204.278	204.511	205.136	1.5	.4	.3	-1.1	.1	.1
Los Angeles-Riverside-Orange County, CA ...	M	216.628	217.302	217.474	216.618	1.2	-.3	-.4	-.6	.4	.1
New York-Northern N.J.-Long Island, NY-NJ-CT-PA	M	232.841	233.502	233.084	233.893	2.3	.2	.3	.1	.1	-.2
Boston-Brockton-Nashua, MA-NH-ME-CT	1	-	235.744	-	236.859	2.2	.5	-	-	-	-
Cleveland-Akron, OH	1	-	192.800	-	192.871	2.1	.0	-	-	-	-
Dallas-Fort Worth, TX	1	-	204.298	-	205.297	1.9	.5	-	-	-	-
Washington-Baltimore, DC-MD-VA-WV ⁶	1	-	140.701	-	140.608	2.1	-.1	-	-	-	-
Atlanta, GA	2	202.276	-	199.736	-	-	-	-	-2.7	-1.3	-
Detroit-Ann Arbor-Flint, MI	2	200.169	-	200.324	-	-	-	-	-.1	.1	-
Houston-Galveston-Brazoria, TX	2	189.503	-	189.304	-	-	-	-	-.7	-.1	-
Miami-Fort Lauderdale, FL	2	219.000	-	220.358	-	-	-	-	-.8	.6	-
Philadelphia-Wilmington-Atlantic City, PA-NJ-DE-MD	2	225.481	-	224.573	-	-	-	-	-.2	-.4	-
San Francisco-Oakland-San Jose, CA	2	221.279	-	221.708	-	-	-	-	.2	.2	-
Seattle-Tacoma-Bremerton, WA	2	221.873	-	221.339	-	-	-	-	.3	-.2	-

¹ Foods, fuels, and several other items priced every month in all areas; most other goods and services priced as indicated:

- M - Every month.
- 1 - January, March, May, July, September, and November.
- 2 - February, April, June, August, October, and December.

² Regions defined as the four Census regions. See technical notes.

³ Indexes on a December 1996=100 base.

⁴ Indexes on a December 1986=100 base.

⁵ In addition, the following metropolitan areas are published semiannually and appear in Tables 34 and 39 of the January and July issues of the CPI Detailed Report: Anchorage, AK; Cincinnati-Hamilton, OH-KY-IN; Denver-Boulder-Greeley, CO; Honolulu, HI; Kansas City, MO-KS; Milwaukee-Racine, WI; Minneapolis-St. Paul, MN-WI; Phoenix-Mesa, AZ; Pittsburgh, PA; Portland-Salem, OR-WA; St. Louis, MO-IL; San Diego, CA;

Tampa-St. Petersburg-Clearwater, FL.

⁶ Indexes on a November 1996=100 base.

- Data not available.

NOTE: Local area indexes are byproducts of the national CPI program. Each local index has a smaller sample size than the national index and is, therefore, subject to substantially more sampling and other measurement error. As a result, local area indexes show greater volatility than the national index, although their long-term trends are similar. Therefore, the Bureau of Labor Statistics strongly urges users to consider adopting the national average CPI for use in their escalator clauses.

NOTE: Index applies to a month as a whole, not to any specific date.

Table 7. Chained Consumer Price Index for All Urban Consumers (C-CPI-U): U.S. city average, by expenditure category and commodity and service group

(December 1999=100, unless otherwise noted)

C-CPI-U	Relative importance, 2005-2006	Unadjusted indexes		Unadjusted percent change to Nov. 2009 from—	
		Oct. 2009	Nov. 2009	Nov. 2008	Oct. 2009
Expenditure category					
All items	100.000	124.179	124.231	1.6	0.0
Food and beverages	14.726	127.775	127.616	-6	-.1
Food	13.648	127.722	127.538	-8	-.1
Food at home	7.557	122.743	122.249	-3.0	-.4
Food away from home	6.091	134.188	134.427	2.1	.2
Alcoholic beverages	1.077	128.803	128.961	2.3	.1
Housing	42.421	128.235	127.729	-.5	-.4
Shelter	32.409	131.398	130.640	.2	-.6
Fuels and utilities	5.004	152.195	153.587	-4.0	.9
Household furnishings and operations	5.008	94.643	94.161	-1.5	-.5
Apparel	3.988	91.496	90.350	.5	-1.3
Transportation	17.393	124.609	126.788	8.8	1.7
Private transportation	16.285	125.186	127.413	9.4	1.8
Public transportation	1.108	117.852	119.391	.2	1.3
Medical care	6.085	146.888	147.213	3.3	.2
Medical care commodities	1.615	130.234	130.309	3.6	.1
Medical care services	4.470	153.001	153.430	3.2	.3
Recreation	5.935	104.321	103.789	-1.8	-.5
Education and communication	6.196	111.581	111.299	1.8	-.3
Education	2.771	180.851	180.676	4.6	-.1
Communication	3.425	73.904	73.623	-5	-.4
Other goods and services	3.257	134.750	135.123	6.7	.3
Commodity and service group					
Services	58.427	134.196	133.887	.7	-.2
Commodities	41.573	111.944	112.420	2.9	.4
Durables	11.817	81.540	81.824	1.0	.3
Nondurables	29.756	127.691	128.273	3.7	.5
All items less food and energy	77.561	119.380	119.113	1.3	-.2
Energy	8.790	169.637	174.226	8.1	2.7

Indexes for 2009 are initial estimates. Indexes for 2008 are interim adjustments.
NOTE: Index applies to a month as a whole, not to any specific date.