

Transmission of material in this release is embargoed until
8:30 a.m. (EST) Thursday, January 14, 2016

USDL-16-0041

Technical information: (202) 691-7101 • MXPinfo@bls.gov • www.bls.gov/mxp
Media contact: (202) 691-5902 • PressOffice@bls.gov

U.S. IMPORT AND EXPORT PRICE INDEXES – DECEMBER 2015

U.S. import prices declined 1.2 percent in December, the U.S. Bureau of Labor Statistics reported today, driven by a drop in fuel prices. The December decrease followed a 0.5-percent fall the previous month. Prices for U.S. exports also decreased in December, declining 1.1 percent, after a 0.7-percent drop in November.

Chart 1. One-month percent change in the Import Price Index: December 2014 – December 2015

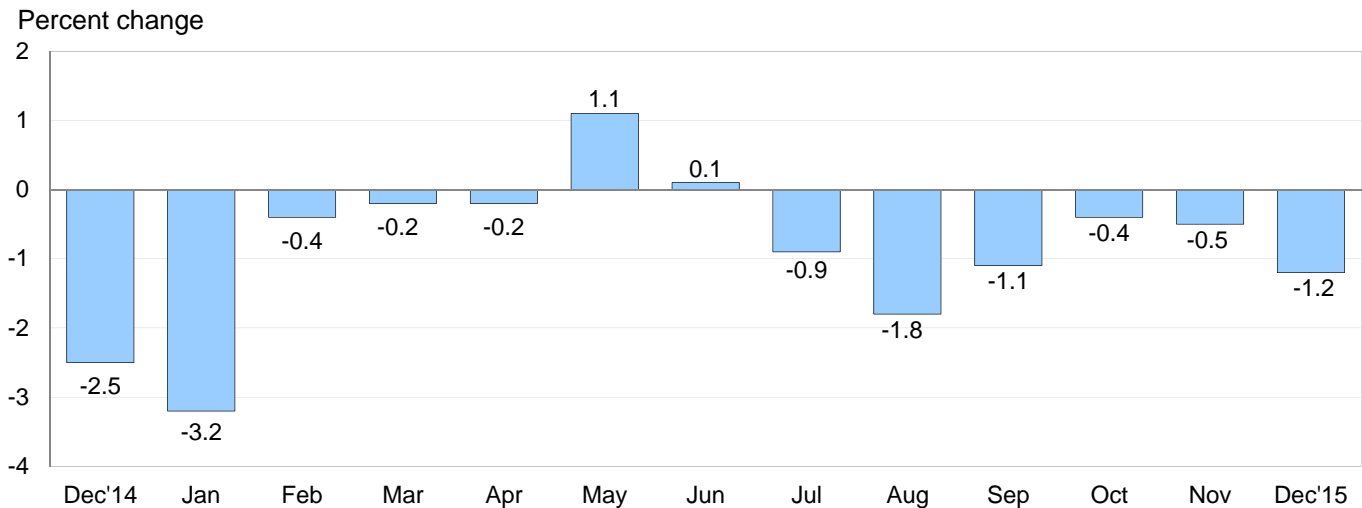
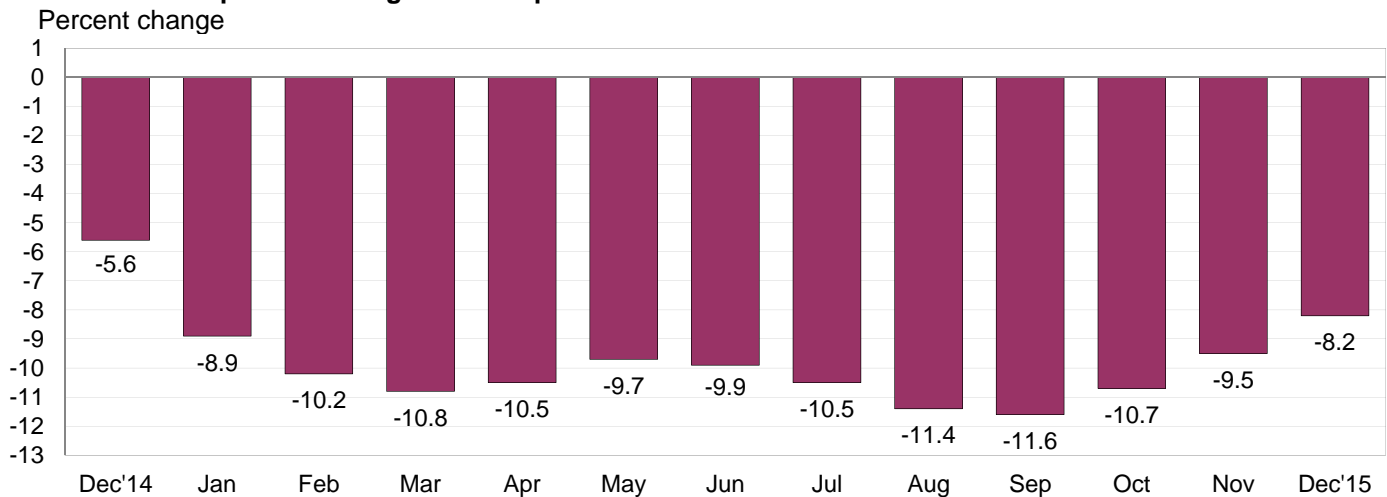


Chart 2. 12-month percent change in the Import Price Index: December 2014 – December 2015



All Imports: Overall import prices fell 1.2 percent in December, the largest monthly drop for the index since a 1.8-percent decline in August. While most of the December decrease was attributable to falling fuel prices, nonfuel prices continued to trend down as well. Import prices fell 8.2 percent in 2015, the largest calendar-year decline since the index fell 10.1 percent in 2008.

Fuel Imports: Fuel prices decreased 9.5 percent in December, following a 3.5-percent drop in November. The December decline was the largest 1-month fall in the index since a 12.7-percent decrease in August and was led by a 10.0-percent drop in petroleum prices. Natural gas prices also declined in December, falling 6.8 percent. The price index for import fuel decreased 40.5 percent in 2015, after a 29.1-percent drop the previous year. The decline over the past 12 months was the largest calendar-year decrease in fuel prices since the index fell 47.0 percent in 2008. For the year ended in December, petroleum prices declined 41.3 percent and natural gas prices decreased 43.3 percent.

All Imports Excluding Fuel: Prices for nonfuel imports fell 0.3 percent in December and have not recorded a monthly advance since the index rose 0.1 percent in July 2014. Lower prices for nonfuel industrial supplies and materials; foods, feeds, and beverages; and each of the major finished goods categories all contributed to the overall drop in nonfuel prices. The price index for nonfuel imports declined 3.4 percent over the past year, the biggest calendar-year drop since the index was first published in 2001.

Table A. Percent change in Import and Export Price Indexes, selected categories

Month	IMPORTS			EXPORTS		
	All imports	Fuel imports	Nonfuel imports	All exports	Agricultural exports	Non-agricultural exports
2014						
December.....	-2.5	-15.0	-0.1	-0.9	-0.7	-1.0
2015						
January.....	-3.2	-20.1	-0.7	-1.7	-1.4	-1.8
February.....	-0.4	-1.9	-0.2	-0.2	-2.2	0.2
March.....	-0.2	1.5	-0.4	0.0	-1.6	0.2
April.....	-0.2	1.8	-0.3	-0.6	-0.9	-0.7
May.....	1.1	10.8	0.0	0.5	-1.3	0.6
June.....	0.1	1.5	-0.2	-0.3	-1.6	-0.1
July.....	-0.9	-6.1	-0.3	-0.4	1.0	-0.6
August.....	-1.8	-12.7	-0.3	-1.4	-2.5	-1.3
September.....	-1.1	-8.4	-0.3	-0.6	-1.4	-0.5
October.....	-0.4 ^r	-0.4 ^r	-0.3	-0.2	0.1	-0.3
November.....	-0.5 ^r	-3.5 ^r	-0.2	-0.7 ^r	-0.9 ^r	-0.7 ^r
December.....	-1.2	-9.5	-0.3	-1.1	-1.0	-1.0
Dec. 2013 to 2014.....	-5.6	-29.1	0.0	-3.0	-5.2	-2.8
Dec. 2014 to 2015.....	-8.2	-40.5	-3.4	-6.5	-13.0	-5.9

r Revised

Chart 3. One-month percent change in the Export Price Index: December 2014 – December 2015

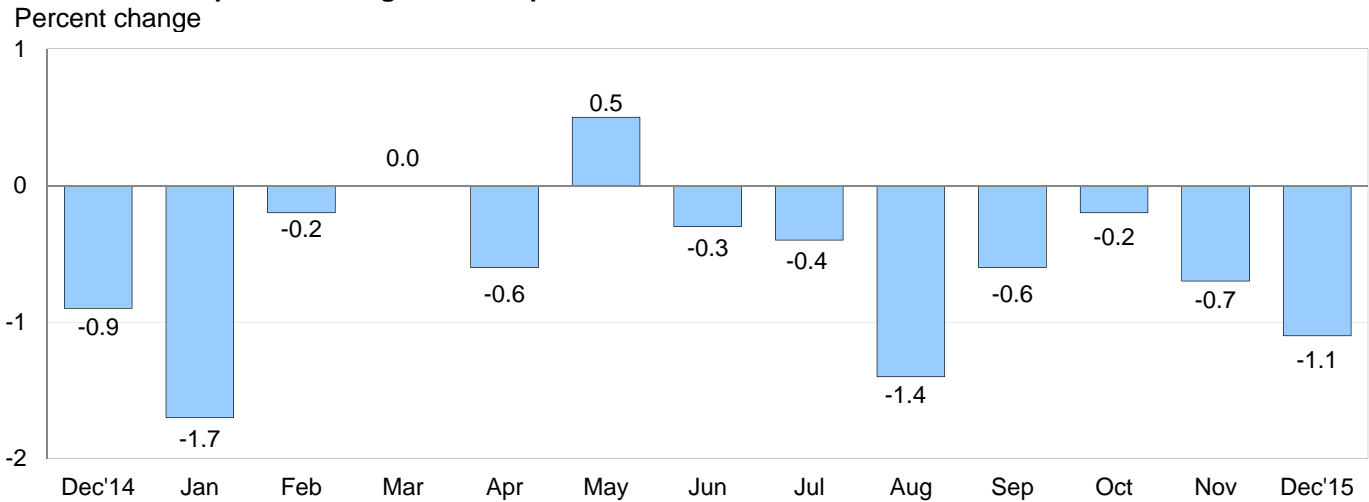
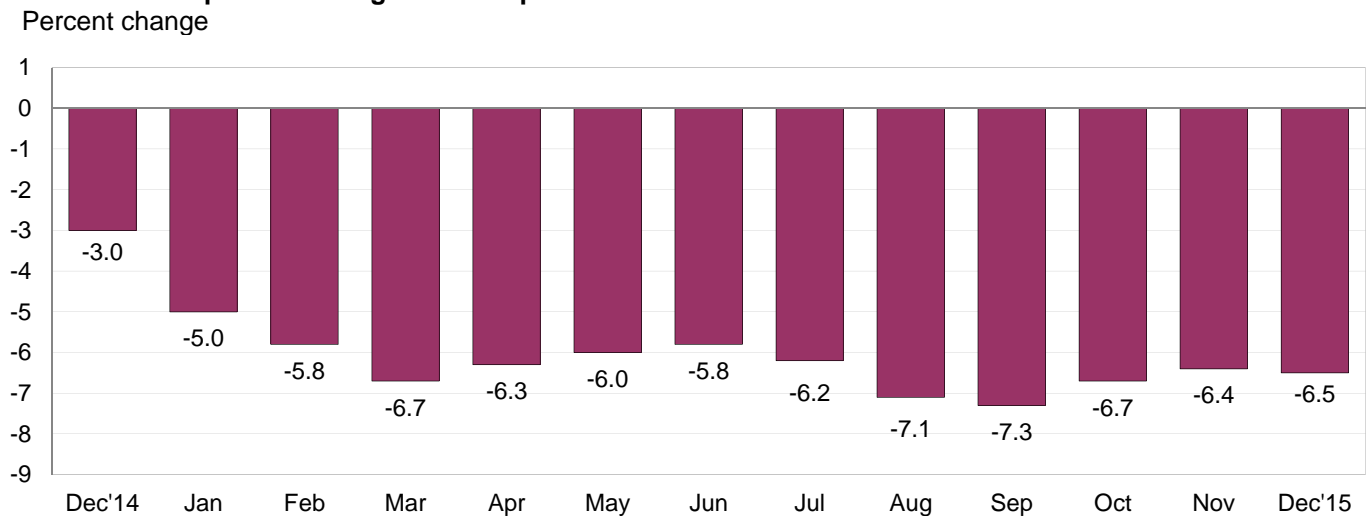


Chart 4. 12-month percent change in the Export Price Index: December 2014 – December 2015



All Exports: The price index for U.S. exports decreased 1.1 percent in December, the largest 1-month drop since a 1.4-percent decline in August. In December both agricultural and nonagricultural prices contributed to the overall decline. Prices for U.S. exports decreased 6.5 percent in 2015, the largest calendar-year drop since the index was first published in 1983.

Agricultural Exports: Prices for agricultural exports decreased 1.0 percent in December, following a 0.9-percent decrease in November. Nut prices, which fell 4.0 percent in December after a 6.1-percent decline the previous month, were the largest contributor to both the December and November drops in overall agricultural prices. In December, falling prices for wheat, corn, and meat also factored into the decrease. Agricultural export prices fell 13.0 percent over the past year, the third consecutive calendar-year decline and the largest since the index was first published in 1985.

All Exports Excluding Agriculture: Nonagricultural prices fell 1.0 percent in December, after a 0.7-percent decline the previous month. In December, lower prices for nonagricultural industrial supplies and materials, capital goods, and consumer goods all contributed to the overall drop in nonagricultural prices. Prices for nonagricultural exports decreased 5.9 percent in 2015, the largest calendar-year decline since the index was first published in 1985.

SELECTED DECEMBER HIGHLIGHTS

Import Prices

Imports by Locality of Origin: The price index for imports from China edged down 0.1 percent in December and has not recorded a monthly increase since the index rose 0.1 percent in December 2014. Import prices from China declined 1.7 percent in 2015, the largest calendar-year decrease since the index fell 1.8 percent in 2009. Prices for imports from Japan declined 0.1 percent in December and 2.9 percent over the past year. The drop over the past 12 months followed decreases of 1.4 percent in 2014 and 3.4 percent in 2013. Import prices from Canada, the European Union, and Mexico also declined in December, falling 2.8 percent, 0.4 percent, and 0.7 percent, respectively. All three indexes were impacted by falling fuel prices.

Nonfuel Industrial Supplies and Materials: Nonfuel industrial supplies and materials prices decreased 1.2 percent in December, following a 0.8-percent decline the previous month. Both drops were driven by lower unfinished metals prices which fell 3.3 percent in December and 2.6 percent in November.

Finished Goods: Each of the major finished goods areas declined in December. Prices for capital goods declined 0.3 percent, and the price indexes for both consumer goods and automotive vehicles edged down 0.1 percent. Capital goods prices fell 2.5 percent over the past year, the largest 12-month drop since the index declined 2.6 percent in November 2002 and the biggest calendar-year decrease since the index declined 2.7 percent in 2001.

Foods, Feeds, and Beverages: Import foods, feeds, and beverages prices edged down 0.1 percent for the second consecutive month in December. The December decline was led by lower prices for meat and food oils which more than offset rising prices for vegetables and fruits.

Transportation Services: Import air passenger fares declined 0.6 percent in December, following increases of 3.7 percent in November and 5.2 percent in October. The December decrease was driven by an 11.6-percent drop in European fares. Overall air passenger fares fell 9.9 percent in 2015, the largest calendar-year drop since the index was first published in 1989. Import air freight prices decreased 2.7 percent in December and 2.6 percent over the past year.

Export Prices

Nonagricultural Industrial Supplies and Materials: Prices for nonagricultural industrial supplies and materials declined 3.1 percent in December, led by an 8.6-percent drop in export fuel prices.

Finished Goods: Finished goods prices were mostly down in December. Capital goods prices declined 0.2 percent in December. Prices for consumer goods fell 0.4 percent for the month, and 2.4 percent over the past 12 months. The decrease in 2015 was the largest calendar-year decline since the index was first published in 1983.

Transportation Services: Export air passenger fares advanced 4.1 percent in December, the largest increase since the index rose 8.3 percent in December 2014. Despite the advance, export air passenger fares declined 15.0 percent in 2015, the largest calendar-year drop since the index was first published in 1987. The price index for export air freight edged down 0.1 percent in December and increased 0.4 percent over the past year.

Import and Export Price Index data for January 2016 are scheduled for release on Friday, February 12, 2016 at 8:30 a.m. (EST).

Table 1. U.S. import price indexes and percent changes for selected categories of goods: December 2014 to December 2015

[2000=100, unless otherwise noted]

Description	End Use	Relative importance Nov. 2015 ¹	Index		Percent change				
			Nov. 2015	Dec. 2015	Annual	Monthly			
					Dec. 2014 to Dec. 2015	Aug. 2015 to Sept. 2015	Sept. 2015 to Oct. 2015	Oct. 2015 to Nov. 2015	Nov. 2015 to Dec. 2015
All commodities		100.000	120.8	119.4	-8.2	-1.1	-0.4	-0.5	-1.2
All imports excluding food and fuels (Dec. 2010=100)		84.750	98.6	98.3	-3.2	-0.2	-0.3	-0.2	-0.3
All imports excluding petroleum		91.547	111.2	110.8	-3.7	-0.2	-0.4	-0.3	-0.4
All imports excluding fuels (Dec. 2001=100)		90.803	115.3	114.9	-3.4	-0.3	-0.3	-0.2	-0.3
Foods, feeds, & beverages	0	6.053	172.8	172.7	-5.2	-0.7	-1.0	-0.1	-0.1
Agricultural foods, feeds & beverages, excluding distilled beverages.....	00	4.702	190.9	190.5	-5.5	-0.7	-1.4	0.1	-0.2
Nonagricultural foods (fish, distilled beverages).....	01	1.351	131.7	132.4	-4.0	-0.6	0.4	-0.7	0.5
Industrial supplies & materials	1	22.414	155.9	148.8	-25.4	-4.2	-0.7	-1.9	-4.6
Industrial supplies & materials excluding petroleum.....		13.961	140.4	138.5	-12.5	-0.8	-1.0	-0.9	-1.4
Industrial supplies & materials excluding fuels (Dec. 2001=100).....		13.217	159.2	157.3	-11.1	-1.0	-0.9	-0.8	-1.2
Industrial supplies & materials, durable....		7.747	146.0	143.5	-12.6	-0.8	-0.5	-1.0	-1.7
Industrial supplies & materials nondurable excluding petroleum.....		5.469	133.3	132.0	-12.3	-0.7	-1.8	-0.7	-1.0
Fuels & lubricants.....	10	9.198	151.3	136.9	-40.5	-8.4	-0.4	-3.5	-9.5
Petroleum & petroleum products.....	100	8.454	162.2	146.0	-41.3	-9.4	-0.2	-3.6	-10.0
Crude.....	10000	5.972	160.8	142.0	-42.9	-9.8	1.6	-5.5	-11.7
Fuels, n.e.s.-coals & gas.....	101	0.553	94.3	89.8	-35.2	4.7	-2.6	-3.4	-4.8
Gas-natural.....	10110	0.390	77.4	72.1	-43.3	6.6	-3.6	-4.7	-6.8
Paper & paper base stocks.....	11	0.608	109.5	108.5	-3.8	0.0	-0.6	0.3	-0.9
Materials associated with nondurable supplies & materials.....	12	4.932	152.8	152.0	-9.5	-1.4	-1.8	-0.5	-0.5
Selected building materials.....	13	1.224	134.6	134.1	-4.6	-1.7	-0.2	1.3	-0.4
Unfinished metals related to durable goods.....	14	3.035	183.7	177.6	-22.4	-0.9	-0.6	-2.6	-3.3
Finished metals related to durable goods.....	15	1.697	147.0	145.2	-7.5	-0.7	-0.7	-0.6	-1.2
Nonmetals related to durable goods.....	16	1.721	108.7	108.5	-2.7	0.0	-0.1	-0.3	-0.2
Capital goods	2	28.223	90.1	89.8	-2.5	-0.1	-0.2	-0.1	-0.3
Electric generating equipment.....	20	3.436	116.9	116.6	-2.9	0.1	-0.5	-0.2	-0.3
Nonelectrical machinery.....	21	22.270	82.6	82.3	-2.7	-0.1	-0.2	-0.1	-0.4
Transportation equipment excluding motor vehicles (Dec. 2001=100).....	22	2.516	137.0	136.9	0.1	-0.1	0.0	0.1	-0.1
Automotive vehicles, parts & engines	3	15.783	110.6	110.5	-1.9	-0.1	-0.3	-0.1	-0.1
Consumer goods, excluding automotives	4	27.527	107.1	107.0	-0.8	0.1	0.0	-0.1	-0.1
Nondurables, manufactured.....	40	13.155	119.1	119.0	-0.1	0.2	0.0	-0.1	-0.1
Durables, manufactured.....	41	12.855	95.3	95.0	-1.6	0.1	0.0	-0.1	-0.3
Nonmanufactured consumer goods.....	42	1.517	117.1	118.5	-0.5	-0.6	0.2	0.2	1.2

¹ Relative importance figures are based on 2013 trade values.

NOTES: Data may be revised in each of the 3 months after original publication.

Dash = Not available

Table 2. U.S. export price indexes and percent changes for selected categories of goods: December 2014 to December 2015

[2000=100, unless otherwise noted]

Description	End Use	Relative importance Nov. 2015 ¹	Index		Percent change				
			Nov. 2015	Dec. 2015	Annual Dec. 2014 to Dec. 2015	Monthly			
						Aug. 2015 to Sept. 2015	Sept. 2015 to Oct. 2015	Oct. 2015 to Nov. 2015	Nov. 2015 to Dec. 2015
All commodities		100.000	121.2	119.9	-6.5	-0.6	-0.2	-0.7	-1.1
Agricultural commodities		8.735	177.3	175.6	-13.0	-1.4	0.1	-0.9	-1.0
All exports excluding food and fuels (Dec. 2010=100)		85.030	98.7	98.3	-3.1	-0.1	-0.3	-0.4	-0.4
Nonagricultural commodities		91.265	116.9	115.7	-5.9	-0.5	-0.3	-0.7	-1.0
Foods, feeds, & beverages	0	8.111	178.9	177.0	-13.3	-1.4	0.5	-0.9	-1.1
Agricultural foods, feeds & beverages, excluding distilled beverages.....	00	7.441	179.5	177.4	-13.9	-1.5	0.4	-0.9	-1.2
Nonagricultural foods (fish, distilled beverages).....	01	0.670	180.1	179.4	-5.6	0.0	2.0	-0.7	-0.4
Industrial supplies & materials	1	29.535	141.7	137.6	-15.4	-1.5	-0.8	-2.0	-2.9
Industrial supplies & materials, durable....		10.709	150.4	147.6	-10.5	-0.1	-0.1	-1.4	-1.9
Industrial supplies & materials, nondurable.....		18.825	137.9	133.1	-17.9	-2.3	-1.1	-2.3	-3.5
Agricultural industrial supplies & materials.....	10	1.294	169.0	169.9	-6.9	-1.0	-1.7	-1.6	0.5
Nonagricultural industrial supplies & materials		28.241	140.9	136.5	-15.7	-1.5	-0.8	-1.9	-3.1
Fuels & lubricants.....	11	6.859	150.5	137.6	-32.6	-5.1	-1.2	-3.5	-8.6
Nonagricultural supplies & materials excluding fuels & building materials....	12	20.384	149.0	146.9	-9.1	-0.3	-0.6	-1.6	-1.4
Selected building materials.....	13	0.998	113.8	114.7	-5.4	-0.9	0.3	0.5	0.8
Capital goods	2	39.045	107.2	107.0	-0.4	0.0	-0.2	0.0	-0.2
Electrical generating equipment.....	20	3.911	113.1	112.9	-2.2	-0.6	-0.2	0.0	-0.2
Nonelectrical machinery.....	21	26.666	94.7	94.5	-0.9	0.1	-0.2	0.0	-0.2
Transportation equipment excluding motor vehicles (Dec. 2001=100).....	22	8.467	162.0	161.9	2.2	0.2	-0.1	-0.1	-0.1
Automotive vehicles, parts & engines	3	10.487	113.6	113.6	-0.4	0.0	-0.1	-0.1	0.0
Consumer goods, excluding automotives	4	12.822	112.0	111.6	-2.4	-0.2	-0.1	0.1	-0.4
Nondurables, manufactured.....	40	5.682	107.7	107.2	-3.9	-0.2	0.0	0.0	-0.5
Durables, manufactured.....	41	5.473	110.0	109.6	-1.4	-0.3	-0.2	0.1	-0.4

¹ Relative importance figures are based on 2013 trade values.

NOTES: Data may be revised in each of the 3 months after original publication.

Dash = Not available

Table 3. U.S. import price indexes and percent changes for selected categories of goods: December 2014 to December 2015

[December 2005=100, unless otherwise noted]

Description	NAICS	Relative importance Nov. 2015 ¹	Index		Percent change				
			Nov. 2015	Dec. 2015	Annual	Monthly			
					Dec. 2014 to Dec. 2015	Aug. 2015 to Sept. 2015	Sept. 2015 to Oct. 2015	Oct. 2015 to Nov. 2015	Nov. 2015 to Dec. 2015
Nonmanufactured articles.....		8.707	83.3	76.7	-35.6	-6.5	0.5	-3.9	-7.9
Agriculture, forestry, fishing and hunting.....	11	2.081	172.9	175.7	-5.2	0.4	-2.6	0.9	1.6
Crop production.....	111	1.686	184.8	190.2	-3.3	0.8	-1.4	0.5	2.9
Animal production (Dec. 2014=100).....	112	0.206	81.2	75.9	-24.1	-1.8	-11.4	4.5	-6.5
Forestry and logging (Dec. 2012=100).....	113	0.107	60.3	58.6	-14.0	-0.6	-6.8	-1.6	-2.8
Mining.....	21	6.626	72.3	64.4	-42.2	-8.5	1.5	-5.4	-10.9
Mining (except oil and gas) (Dec. 2006=100).....	212	0.211	96.8	96.6	-18.1	-0.9	-0.3	-0.2	-0.2
Manufactured articles.....		91.015	109.5	108.9	-4.7	-0.5	-0.5	-0.2	-0.5
Manufactured goods, part 1.....	31	12.254	123.3	122.8	-2.6	-0.3	-0.3	-0.2	-0.4
Food manufacturing.....	311	3.337	148.8	147.4	-7.6	-1.2	-1.1	-0.3	-0.9
Beverage and tobacco product manufacturing.....	312	1.128	118.1	118.0	0.6	0.2	0.0	-0.2	-0.1
Textile mills (Dec. 2011=100).....	313	0.412	99.7	99.5	-3.5	-0.3	-0.2	-0.5	-0.2
Textile product mills.....	314	0.906	111.0	110.8	-2.6	0.0	-0.4	-0.3	-0.2
Apparel manufacturing.....	315	4.502	111.6	111.5	-0.5	-0.1	-0.1	0.0	-0.1
Leather and allied product manufacturing.....	316	1.968	124.5	124.4	0.3	0.1	-0.1	0.0	-0.1
Manufactured goods, part 2.....	32	17.319	117.0	115.8	-10.4	-1.8	-1.4	0.2	-1.0
Wood product manufacturing.....	321	0.722	111.4	110.7	-7.6	-2.6	-0.5	1.8	-0.6
Paper manufacturing.....	322	1.120	106.6	106.1	-4.7	-0.1	-0.4	-0.1	-0.5
Petroleum and coal products manufacturing.....	324	2.338	78.9	74.2	-37.1	-8.9	-5.4	1.5	-6.0
Chemical manufacturing.....	325	9.673	131.0	130.6	-5.0	-0.7	-0.9	-0.2	-0.3
Plastics and rubber products manufacturing.....	326	2.248	118.6	118.4	-2.9	0.0	-0.1	-0.1	-0.2
Nonmetallic mineral product manufacturing.....	327	1.008	130.2	130.0	-0.1	-0.4	0.0	0.0	-0.2
Manufactured goods, part 3.....	33	61.442	104.0	103.5	-3.4	-0.2	-0.2	-0.2	-0.5
Primary metal manufacturing.....	331	3.717	124.7	120.6	-20.8	-1.1	-0.5	-2.3	-3.3
Fabricated metal product manufacturing.....	332	3.077	124.2	123.9	-2.7	0.1	-0.7	-0.5	-0.2
Machinery manufacturing.....	333	7.419	118.3	117.8	-2.0	0.1	-0.2	-0.1	-0.4
Computer and electronic product manufacturing.....	334	18.168	77.5	77.3	-2.4	-0.3	-0.1	0.0	-0.3
Electrical equipment, appliance, and component manufacturing.....	335	4.829	116.8	116.2	-2.4	0.3	-0.1	-0.2	-0.5
Transportation equipment manufacturing.....	336	16.972	109.8	109.6	-1.5	0.0	-0.3	0.0	-0.2
Furniture and related product manufacturing.....	337	1.628	115.5	115.0	-0.9	-0.2	-0.2	0.1	-0.4
Miscellaneous manufacturing.....	339	5.632	119.1	118.8	-2.0	-0.2	-0.1	0.0	-0.3

¹ Relative importance figures are based on 2013 trade values.

NOTES: Data may be revised in each of the 3 months after original publication.

Dash = Not available

Table 4. U.S. export price indexes and percent changes for selected categories of goods: December 2014 to December 2015

[December 2005=100, unless otherwise noted]

Description	NAICS	Relative importance Nov. 2015 ¹	Index		Percent change				
			Nov. 2015	Dec. 2015	Annual Dec. 2014 to Dec. 2015	Monthly			
						Aug. 2015 to Sept. 2015	Sept. 2015 to Oct. 2015	Oct. 2015 to Nov. 2015	Nov. 2015 to Dec. 2015
Nonmanufactured articles.....		6.001	120.7	119.6	-18.7	-2.7	-1.2	-3.3	-0.9
Agriculture, forestry, fishing and hunting.....	11	4.132	155.9	153.9	-10.6	-2.5	1.7	-1.6	-1.3
Crop production.....	111	3.895	161.8	159.5	-10.8	-2.6	1.7	-1.6	-1.4
Mining.....	21	1.869	61.1	61.2	-32.0	-3.2	-6.7	-6.9	0.2
Mining (except oil and gas).....	212	1.113	79.4	76.8	-19.2	-2.4	-2.1	-1.0	-3.3
Manufactured articles.....		92.646	111.9	110.8	-5.4	-0.4	-0.4	-0.5	-1.0
Manufactured goods, part 1.....	31	6.867	134.1	133.5	-12.0	-0.4	-1.2	-0.6	-0.4
Food manufacturing.....	311	4.661	150.3	149.2	-15.0	-0.5	-1.3	-0.7	-0.7
Beverage and tobacco product manufacturing.....	312	0.580	106.9	108.0	-4.7	-1.4	-2.0	0.3	1.0
Manufactured goods, part 2.....	32	23.682	107.8	104.8	-13.2	-1.5	-0.5	-1.3	-2.8
Paper manufacturing.....	322	1.914	122.6	122.3	-2.9	1.6	-0.2	-0.9	-0.2
Petroleum and coal products manufacturing.....	324	4.634	87.9	77.9	-35.9	-5.6	-1.1	-3.3	-11.4
Chemical manufacturing.....	325	13.196	116.2	115.2	-7.6	-0.7	-0.6	-1.1	-0.9
Plastics and rubber products manufacturing.....	326	2.277	116.6	116.3	-1.8	-0.1	-0.4	0.1	-0.3
Nonmetallic mineral product manufacturing.....	327	0.848	112.6	112.7	0.4	0.0	0.2	0.1	0.1
Manufactured goods, part 3.....	33	62.097	111.4	111.0	-1.2	0.1	-0.1	-0.3	-0.4
Primary metal manufacturing.....	331	4.613	131.2	127.2	-10.8	1.2	0.2	-2.1	-3.0
Fabricated metal product manufacturing.....	332	3.113	129.9	129.8	1.2	0.0	-0.2	0.2	-0.1
Machinery manufacturing.....	333	11.875	125.5	125.4	0.8	0.1	-0.1	0.2	-0.1
Computer and electronic product manufacturing.....	334	14.532	85.0	84.7	-2.5	0.0	-0.2	-0.2	-0.4
Electrical equipment, appliance, and component manufacturing.....	335	3.808	113.1	112.8	-1.6	-0.4	0.0	-0.3	-0.3
Transportation equipment manufacturing..	336	18.045	121.7	121.7	0.8	0.1	0.0	-0.1	0.0
Furniture and related product manufacturing (Dec. 2011=100).....	337	0.395	110.1	110.2	0.5	0.5	0.1	0.0	0.1
Miscellaneous manufacturing.....	339	5.715	122.4	122.0	-1.7	-0.2	-0.3	0.1	-0.3

¹ Relative importance figures are based on 2013 trade values.

NOTES: Data may be revised in each of the 3 months after original publication.

Dash = Not available

Table 5. U.S. import price indexes and percent changes for selected categories of goods: December 2014 to December 2015

[2000=100, unless otherwise noted]

Description	Harmoni- zied system	Relative importance Nov. 2015 ¹	Index		Percent change				
			Nov. 2015	Dec. 2015	Annual	Monthly			
					Dec. 2014 to Dec. 2015	Aug. 2015 to Sept. 2015	Sept. 2015 to Oct. 2015	Oct. 2015 to Nov. 2015	Nov. 2015 to Dec. 2015
Live animals; animal products.....	I	1.343	179.9	177.0	-10.7	-1.2	-2.9	0.4	-1.6
Meat and edible meat ofal.....	02	0.312	224.9	218.3	-14.4	-0.6	-6.4	0.9	-2.9
Fish and crustaceans, molluscs and other aquatic invertebrates.....	03	0.703	128.4	129.6	-5.3	-1.1	0.9	-1.4	0.9
Vegetable products.....	II	2.023	200.8	207.5	-2.6	2.0	-1.2	0.0	3.3
Edible vegetables, roots, and tubers.....	07	0.612	498.6	527.8	9.1	11.1	-5.9	0.0	5.9
Edible fruit and nuts; peel of citrus fruit or melons.....	08	0.497	95.0	97.5	0.0	-2.8	3.4	0.3	2.6
Coffee, tea, mate and spices.....	09	0.362	226.6	230.8	-11.3	-1.5	-0.7	-0.9	1.9
Animal or vegetable fats and oils (Dec. 2009=100).....	III	0.272	102.5	97.7	-10.4	-3.3	0.1	-0.4	-4.7
Prepared foodstuffs, beverages, and tobacco.....	IV	2.882	159.9	159.3	-1.9	-0.4	-0.4	0.1	-0.4
Sugars and sugar confectionary (Dec. 2012=100).....	17	0.181	85.3	84.6	-7.7	0.1	-0.8	0.4	-0.8
Cocoa and cocoa preparations (Dec. 2009=100).....	18	0.271	115.9	115.6	5.1	2.6	-1.7	1.7	-0.3
Preparations of cereals, flour, starch or milk; bakers' wares (Dec. 2007=100).....	19	0.289	132.1	132.0	-1.2	-0.1	0.0	-0.1	-0.1
Preparations of vegetables, fruit, nuts, or other parts of plants.....	20	0.339	154.8	154.8	-7.5	-2.1	-0.3	1.4	0.0
Beverages, spirits, and vinegar.....	22	1.094	128.1	128.1	0.2	0.2	0.0	-0.1	0.0
Mineral products.....	V	9.102	151.8	137.4	-40.5	-8.4	-0.5	-3.7	-9.5
Mineral fuels, oils and residuals, bituminous substances and mineral waxes.....	27	8.863	148.8	134.3	-41.1	-8.6	-0.5	-3.8	-9.7
Products of the chemical or allied industries.....	VI	8.890	146.1	145.7	-4.3	-0.6	-0.7	-0.1	-0.3
Inorganic chemicals.....	28	0.656	283.8	277.9	-18.0	-1.0	-1.4	-1.3	-2.1
Organic chemicals.....	29	2.493	120.6	120.5	-8.4	-2.4	-0.8	-0.2	-0.1
Pharmaceutical products.....	30	3.669	138.1	138.0	2.4	0.4	0.2	0.0	-0.1
Fertilizers (Dec. 2009=100).....	31	0.328	91.6	92.4	-19.9	-1.6	-8.9	0.0	0.9
Tanning extracts; dye, pigments, varnish, paints & putty (Dec. 2011=100).....	32	0.210	98.0	97.8	-7.1	0.9	-1.5	0.0	-0.2
Miscellaneous chemical products.....	38	0.573	90.4	89.8	-2.1	0.0	0.2	0.0	-0.7
Plastics and articles thereof; rubber and articles thereof.....	VII	3.442	138.3	137.8	-5.6	-0.4	-0.6	-0.3	-0.4
Plastics and articles thereof.....	39	2.235	142.2	142.0	-4.9	-0.4	-0.3	-0.2	-0.1
Rubber and articles thereof.....	40	1.207	133.0	132.0	-6.8	-0.1	-1.2	-0.3	-0.8
Raw hides, skins, leather, furskins, travel goods, etc.....	VIII	0.742	127.0	127.0	-0.8	-0.4	-0.2	-0.1	0.0
Articles of leather; travel goods, bags, etc. of various materials.....	42	0.702	130.0	130.0	-0.3	-0.2	-0.2	-0.1	0.0
Wood, wood charcoal, cork, straw, basketware and wickerwork.....	IX	0.751	135.9	135.3	-6.9	-2.3	-0.4	1.8	-0.4
Wood and articles of wood; wood charcoal (Dec. 2014=100).....	44	0.712	93.2	92.8	-7.2	-2.4	-0.4	1.9	-0.4
Woodpulp, recovered paper, and paper products.....	X	1.190	111.0	110.5	-2.5	0.0	-0.3	0.1	-0.5
Paper and paperboard; articles of paper pulp, paper or paperboard.....	48	0.791	104.9	104.9	-1.9	-0.2	0.1	-0.3	0.0
Textile and textile articles.....	XI	5.653	113.9	113.7	-1.0	-0.1	-0.1	-0.1	-0.2

See footnotes at end of table.

Table 5. U.S. import price indexes and percent changes for selected categories of goods: December 2014 to December 2015 — Continued
 [2000=100, unless otherwise noted]

Description	Harmoni- zied system	Relative importance Nov. 2015 ¹	Index		Percent change				
			Nov. 2015	Dec. 2015	Annual	Monthly			
					Dec. 2014 to Dec. 2015	Aug. 2015 to Sept. 2015	Sept. 2015 to Oct. 2015	Oct. 2015 to Nov. 2015	Nov. 2015 to Dec. 2015
Articles of apparel and clothing accessories, knitted or crocheted.....	61	2.279	104.0	104.0	0.1	-0.1	0.0	0.0	0.0
Articles of apparel and clothing accessories, not knitted or crocheted.....	62	2.039	119.7	119.5	-0.7	0.0	0.1	-0.1	-0.2
Made-up or worn textile articles.....	63	0.655	105.1	104.9	-2.5	0.4	-0.5	-0.4	-0.2
Headgear, umbrellas, artificial flowers, etc...	XII	1.561	123.6	123.4	0.6	0.2	0.0	0.0	-0.2
Footwear and parts of such articles.....	64	1.357	122.7	122.5	0.4	0.2	0.0	-0.1	-0.2
Stone, plaster, cement, asbestos, ceramics, glass etc.....	XIII	0.933	132.1	131.5	-0.8	-0.4	0.1	0.1	-0.5
Ceramic products.....	69	0.278	138.0	137.8	-1.1	-0.1	-0.1	-0.1	-0.1
Glass and glassware.....	70	0.328	130.0	128.9	-0.2	0.2	0.1	0.0	-0.8
Pearls, stones, precious metals, imitation jewelry, and coins.....	XIV	3.027	163.7	159.5	-7.8	0.7	0.8	-0.9	-2.6
Base metals and articles of base metals. ...	XV	5.125	156.7	155.0	-14.1	-1.3	-1.2	-1.4	-1.1
Iron and steel.....	72	0.994	160.3	157.6	-27.4	-1.6	-3.6	-3.9	-1.7
Articles of iron or steel.....	73	1.686	143.8	143.1	-6.8	-0.6	-1.0	-0.5	-0.5
Copper and articles thereof.....	74	0.428	257.7	251.4	-19.6	-4.8	1.3	-0.7	-2.4
Aluminum and articles thereof.....	76	0.711	122.2	121.4	-14.5	-1.3	-0.9	-1.5	-0.7
Tools, implements, cutlery, spoons and forks, of base metal; parts thereof.....	82	0.454	126.2	125.9	-2.4	-0.3	-0.4	-0.7	-0.2
Miscellaneous articles of base metal.....	83	0.539	137.9	137.6	-0.4	-0.2	-0.2	0.4	-0.2
Machinery, electrical equipment, TV image and sound recorders, parts, etc.....	XVI	30.533	81.9	81.7	-2.4	0.0	-0.2	-0.1	-0.2
Machinery and mechanical appliances; parts thereof.....	84	15.516	87.0	86.7	-2.6	0.2	-0.3	-0.1	-0.3
Electrical machinery and equip, sound and TV recorders & reproducers, parts.....	85	15.017	77.0	76.9	-2.3	-0.3	-0.1	-0.1	-0.1
Vehicles, aircraft, vessels and associated transport equipment.....	XVII	14.246	114.3	114.2	-1.0	0.0	-0.2	-0.1	-0.1
Motor vehicles and their parts.....	87	12.869	112.9	112.8	-1.1	0.0	-0.2	-0.1	-0.1
Aircraft, spacecraft, and parts thereof (Dec. 2002=100).....	88	1.281	119.7	119.7	-0.4	-0.2	0.0	0.0	0.0
Optical, photo, measuring, medical & musical instruments; & timepieces.....	XVIII	4.017	103.1	102.9	-1.4	-0.1	-0.2	0.0	-0.2
Optical, photographic, measuring and medical instruments.....	90	3.684	99.9	99.7	-1.4	-0.1	-0.1	-0.1	-0.2
Clocks and watches and parts thereof.....	91	0.268	141.0	140.0	-2.3	-0.1	-0.6	0.3	-0.7
Miscellaneous manufactured articles.....	XX	4.157	112.4	112.1	-1.8	-0.2	-0.1	0.0	-0.3
Furniture & stuffed furnishings; lamps & lighting fittings, nesoi; prefab bldgs.....	94	2.508	117.1	116.6	-1.8	-0.1	-0.1	0.0	-0.4
Toys, games and sports equipment; parts and accessories thereof.....	95	1.382	103.8	103.8	-1.9	-0.4	-0.2	-0.1	0.0
Miscellaneous manufactured articles.....	96	0.267	134.0	134.0	-0.7	0.0	-0.1	0.0	0.0

¹ Relative importance figures are based on 2013 trade values.

NOTES: Data may be revised in each of the 3 months after original publication.

Dash = Not available

Table 6. U.S. export price indexes and percent changes for selected categories of goods: December 2014 to December 2015

[2000=100, unless otherwise noted]

Description	Harmoni- zied system	Relative importance Nov. 2015 ¹	Index		Percent change				
			Nov. 2015	Dec. 2015	Annual Dec. 2014 to Dec. 2015	Monthly			
						Aug. 2015 to Sept. 2015	Sept. 2015 to Oct. 2015	Oct. 2015 to Nov. 2015	Nov. 2015 to Dec. 2015
Live animals; animal products.....	I	1.793	183.1	180.8	-21.9	0.6	-2.0	-0.4	-1.3
Meat & edible meat offal (Dec. 2006=100)...	02	1.042	141.0	139.2	-25.0	1.1	-2.9	-0.4	-1.3
Fish and crustaceans, molluscs and other aquatic invertebrates.....	03	0.395	199.1	198.5	-6.2	0.0	1.2	-1.1	-0.3
Vegetable products.....	II	3.917	200.1	196.2	-12.9	-2.6	2.0	-0.8	-1.9
Edible fruit and nuts; peel of citrus fruit or melons.....	08	1.162	175.6	169.5	-9.6	-1.2	2.3	0.6	-3.5
Cereals.....	10	1.008	193.3	185.4	-18.6	-1.3	7.9	-1.3	-4.1
Oilseeds and misc. grains, seeds, fruits, plants, straw and fodder.....	12	1.304	188.1	188.8	-14.9	-7.2	0.1	-2.9	0.4
Animal or vegetable fats and oils (Dec. 2009=100).....	III	0.197	90.9	91.3	-12.7	-1.6	-1.2	-0.3	0.4
Prepared foodstuffs, beverages, and tobacco.....	IV	2.935	149.3	148.9	-8.4	-1.3	-0.9	-0.3	-0.3
Preparations of vegetables, fruit, nuts or other parts of plants (Dec. 2009=100)....	20	0.415	118.3	118.4	0.8	0.1	-0.1	0.1	0.1
Beverages, spirits, and vinegar (Dec. 2008=100).....	22	0.518	107.9	107.2	-3.2	-1.7	0.0	-0.4	-0.6
Residues and waste from the food industries; prepared animal feed.....	23	0.692	201.2	199.8	-17.9	-3.6	-3.4	-1.1	-0.7
Mineral products.....	V	6.626	170.1	155.8	-34.0	-4.7	-2.2	-3.9	-8.4
Ores, slag and ash (Dec. 2012=100).....	26	0.416	72.1	70.2	-24.8	-2.4	-3.8	-1.9	-2.6
Mineral fuels, oils and residuals, bituminous substances and mineral waxes.....	27	6.026	163.4	148.7	-35.3	-5.0	-2.2	-4.2	-9.0
Products of the chemical or allied industries.....	VI	10.944	139.6	138.7	-5.4	-0.8	-0.3	-0.5	-0.6
Inorganic chemicals.....	28	0.916	183.0	183.4	5.8	-0.3	-0.4	-0.2	0.2
Organic chemicals.....	29	2.839	136.3	135.7	-12.5	-3.1	-0.9	-0.9	-0.4
Pharmaceutical products.....	30	2.639	110.3	109.2	-4.8	-0.4	-0.3	0.2	-1.0
Essential oils and resinoids; perfumery cosmetic or toilet preparations.....	33	0.810	135.5	135.5	1.9	-0.5	-0.1	0.1	0.0
Soap; lubricants; waxes, polishing or scouring products; candles, pastes.....	34	0.490	112.7	112.2	-4.3	0.3	-0.5	0.3	-0.4
Miscellaneous chemical products.....	38	1.939	150.6	148.6	-3.6	1.8	0.1	-0.7	-1.3
Plastics and articles thereof; rubber and articles thereof.....	VII	5.115	137.1	135.9	-8.4	-0.1	-1.3	-1.4	-0.9
Plastics and articles thereof.....	39	4.165	132.6	131.3	-8.7	-0.1	-1.4	-1.6	-1.0
Rubber and articles thereof.....	40	0.950	156.1	155.0	-7.4	-0.7	-0.6	-0.5	-0.7
Raw hides, skins, leather, furskins, travel goods, etc.....	VIII	0.369	119.3	119.3	-22.0	0.6	-2.9	-4.4	0.0
Raw hides and skins other than furskins and leather (Dec.2014=100).....	41	0.204	68.8	68.8	-31.2	1.7	-4.8	-5.8	0.0
Wood, wood charcoal, cork, straw, baskets and wickerwork (Dec. 2014=100).....	IX	0.625	95.5	96.5	-3.5	-0.9	0.6	1.1	1.0
Woodpulp, recovered paper, and paper products.....	X	2.295	122.6	122.0	-3.2	0.9	0.0	-0.7	-0.5
Woodpulp and recovered paper.....	47	0.637	122.9	121.5	-6.3	3.3	-0.3	-2.8	-1.1
Paper and paperboard; articles of paper pulp, paper or paperboard.....	48	1.238	122.6	121.6	-2.6	-0.1	0.0	0.2	-0.8
Printed material (Dec. 2014=100).....	49	0.420	99.2	100.4	0.4	0.1	0.6	0.1	1.2
Textile and textile articles.....	XI	1.808	120.1	120.5	-3.5	-0.6	-0.7	-0.7	0.3

See footnotes at end of table.

Table 6. U.S. export price indexes and percent changes for selected categories of goods: December 2014 to December 2015 — Continued
 [2000=100, unless otherwise noted]

Description	Harmonized system	Relative importance Nov. 2015 ¹	Index		Percent change				
			Nov. 2015	Dec. 2015	Annual	Monthly			
					Dec. 2014 to Dec. 2015	Aug. 2015 to Sept. 2015	Sept. 2015 to Oct. 2015	Oct. 2015 to Nov. 2015	Nov. 2015 to Dec. 2015
Cotton, including yarns and woven fabrics thereof.....	52	0.460	116.2	115.9	-5.3	-1.3	-1.3	-1.2	-0.3
Stone, plaster, cement, asbestos, ceramics, glass etc.....	XIII	0.848	122.5	122.6	1.9	0.0	0.1	0.2	0.1
Glass and glassware.....	70	0.437	99.2	99.4	0.5	0.1	0.1	0.1	0.2
Pearls, stones, precious metals, imitation jewelry, and coins.....	XIV	4.694	223.7	218.2	-7.9	1.3	0.4	-1.4	-2.5
Base metals and articles of base metals. ...	XV	5.044	143.6	141.7	-11.3	-0.7	-0.7	-1.5	-1.3
Iron and steel.....	72	1.085	141.4	137.4	-23.2	-1.4	-1.9	-4.1	-2.8
Copper and articles thereof.....	74	0.452	161.3	150.2	-25.6	-0.8	-0.3	-3.4	-6.9
Aluminum and articles thereof.....	76	0.809	103.6	103.6	-16.9	-2.8	-0.7	-2.7	0.0
Miscellaneous articles of base metal.....	83	0.344	148.6	148.3	0.8	0.1	0.0	0.0	-0.2
Machinery, electrical equipment, TV image and sound recorders, parts, etc.....	XVI	29.694	96.5	96.3	-1.0	-0.1	-0.1	-0.1	-0.2
Machinery and mechanical appliances; parts thereof.....	84	17.920	113.1	112.9	-0.3	0.0	0.0	-0.1	-0.2
Electrical machinery and equipment and parts and accessories thereof.....	85	11.774	78.4	78.3	-2.2	-0.4	-0.3	-0.1	-0.1
Vehicles, aircraft, vessels and associated transport equipment.....	XVII	15.044	131.0	131.0	0.6	0.1	-0.1	-0.1	0.0
Motor vehicles and their parts.....	87	9.333	115.0	114.9	-0.3	-0.1	0.0	0.0	-0.1
Optical, photo, measuring, medical & musical instruments; & timepieces.....	XVIII	6.389	107.3	107.0	-0.6	-0.1	0.0	0.0	-0.3
Miscellaneous manufactured articles.....	XX	1.528	110.9	111.1	0.3	0.4	0.5	-0.6	0.2
Furniture; stuffed furnishings; lamps and lighting fittings nesoi;.....	94	0.875	123.9	124.2	1.4	0.2	0.6	-0.6	0.2
Toys, games and sports equipment; parts and accessories thereof.....	95	0.495	89.8	90.1	0.6	0.0	0.3	0.0	0.3

¹ Relative importance figures are based on 2013 trade values.

NOTES: Data may be revised in each of the 3 months after original publication.

Dash = Not available

Table 7. U.S. import price indexes and percent changes by locality of origin: December 2014 to December 2015
[2000=100, unless otherwise noted]

Description	Relative importance Nov. 2015 ¹	Index		Percent change				
		Nov. 2015	Dec. 2015	Annual	Monthly			
				Dec. 2014 to Dec. 2015	Aug. 2015 to Sept. 2015	Sept. 2015 to Oct. 2015	Oct. 2015 to Nov. 2015	Nov. 2015 to Dec. 2015
Industrialized Countries²	100.000	116.9	115.5	-8.0	-1.4	0.1	-0.2	-1.2
Nonmanufactured articles.....	7.253	121.3	110.1	-33.9	-7.6	6.2	-0.8	-9.2
Manufactured articles.....	92.371	116.2	115.6	-5.1	-0.8	-0.3	-0.2	-0.5
Other Countries³	100.000	118.8	117.4	-8.5	-1.0	-0.4	-0.7	-1.2
Nonmanufactured articles.....	9.679	170.7	157.7	-35.5	-5.9	-0.7	-4.8	-7.6
Manufactured articles.....	90.103	103.7	103.2	-4.5	-0.5	-0.4	-0.2	-0.5
Canada	100.000	118.1	114.8	-14.8	-3.0	0.3	-0.1	-2.8
Nonmanufactured articles.....	20.813	115.9	104.6	-34.5	-7.7	6.6	-0.8	-9.7
Manufactured articles.....	78.591	123.0	121.7	-7.9	-1.7	-1.1	0.1	-1.1
European Union⁴	100.000	132.3	131.8	-3.9	-1.1	0.2	-0.4	-0.4
Manufactured articles.....	99.424	128.9	128.4	-3.7	-1.1	0.1	-0.3	-0.4
France (Dec. 2003=100)	100.000	121.3	121.1	-1.4	0.0	-0.2	-0.2	-0.2
Germany (Dec. 2003=100)	100.000	116.8	116.2	-1.6	0.1	0.1	-0.1	-0.5
United Kingdom (Dec. 2003=100)	100.000	120.8	120.1	-5.7	0.0	-0.1	-0.2	-0.6
Latin America⁵	100.000	139.9	137.8	-11.2	-1.2	-0.7	-1.3	-1.5
Nonmanufactured articles.....	16.519	189.7	179.3	-30.7	-3.4	1.1	-5.9	-5.5
Manufactured articles.....	83.087	120.7	119.9	-6.2	-0.7	-1.1	-0.3	-0.7
Mexico (Dec. 2003=100)	100.000	127.1	126.2	-6.3	-0.8	-0.4	-0.4	-0.7
Nonmanufactured articles (Dec. 2008=100).....	8.902	105.2	99.8	-30.9	-6.3	1.8	-4.6	-5.1
Manufactured articles (Dec. 2008=100)...	90.781	89.7	89.4	-3.1	-0.2	-0.7	0.1	-0.3
Pacific Rim (Dec. 2003=100)⁶	100.000	99.5	99.3	-2.5	-0.1	-0.2	-0.1	-0.2
China (Dec. 2003=100)	100.000	102.0	101.9	-1.7	-0.2	-0.1	-0.3	-0.1
Japan	100.000	95.2	95.1	-2.9	-0.1	0.0	0.0	-0.1
Asian NICs⁷	100.000	85.4	85.1	-3.7	0.0	-0.1	-0.6	-0.4
ASEAN (Dec. 2003=100)⁸	100.000	98.1	97.8	-3.6	-0.5	-0.1	-0.1	-0.3
Asia Near East (Dec. 2003=100)⁹	100.000	145.0	135.5	-32.6	-7.2	-2.7	-1.8	-6.6

¹ Relative importance figures are based on 2013 trade values.

² Western Europe, Canada, Japan, Australia, New Zealand and South Africa.

³ Eastern Europe, Latin America, OPEC countries, and other countries in Asia, Africa and the Western Hemisphere.

⁴ European Union countries.

⁵ Mexico, Central America, South America and the Caribbean.

⁶ China, Japan, Australia, Brunei, Indonesia, Macao, Malaysia, New Zealand, Papua New Guinea, Philippines and the Asian Newly Industrialized Countries.

⁷ Asian Newly Industrialized Countries - Hong Kong, Singapore, South Korea and Taiwan.

⁸ Association of Southeast Asian Nations - Brunei, Cambodia, Indonesia, Laos, Malaysia, Myanmar, Philippines, Singapore, Thailand and Vietnam.

⁹ Bahrain, Iran, Iraq, Israel, Jordan, Kuwait, Lebanon, Oman, Qatar, Saudi Arabia, Syria, United Arab Emirates and Yemen.

NOTES: Data may be revised in each of the 3 months after original publication.

Regions are not mutually exclusive.

Dash = Not available

Table 8. U.S. international price indexes and percent changes for selected transportation services: December 2014 to December 2015

[2000=100, unless otherwise noted]

Description	Relative importance Nov. 2015 ¹	Index		Percent change				
		Nov. 2015	Dec. 2015	Annual Dec. 2014 to Dec. 2015	Monthly			
					Aug. 2015 to Sept. 2015	Sept. 2015 to Oct. 2015	Oct. 2015 to Nov. 2015	Nov. 2015 to Dec. 2015
Air Freight								
Import Air Freight	100.000	167.3	162.8	-2.6	-2.2	5.0	0.8	-2.7
Europe (Dec. 2003=100).....	22.635	145.4	140.4	-15.7	-0.3	-0.4	-1.2	-3.4
Asia.....	66.343	153.4	148.9	2.5	-3.3	8.0	2.0	-2.9
Export Air Freight	100.000	156.7	156.5	0.4	-0.6	-0.3	0.4	-0.1
Europe (Dec. 2006=100).....	33.037	149.4	149.8	6.2	-0.7	-0.5	0.3	0.3
Inbound Air Freight	100.000	155.8	153.0	-3.6	-0.9	2.6	0.6	-1.8
Europe (Dec. 2003=100).....	25.363	137.8	135.0	-10.1	-0.3	-0.6	0.0	-2.0
Asia.....	60.921	142.2	139.2	-2.0	-2.3	4.6	1.3	-2.1
Outbound Air Freight	100.000	145.1	144.6	-5.1	-0.6	-2.3	0.1	-0.3
Europe (Dec. 2003=100).....	31.639	157.0	157.8	-8.3	-0.3	-0.5	-0.9	0.5
Asia.....	43.857	136.5	134.9	-6.2	-0.6	-4.6	0.4	-1.2
Air Passenger Fares								
Import Air Passenger Fares	100.000	195.6	194.4	-9.9	-4.5	5.2	3.7	-0.6
Europe.....	44.683	232.6	205.6	-9.9	3.9	3.8	5.1	-11.6
Asia.....	21.884	141.2	159.9	-7.2	-7.7	5.1	-0.7	13.2
Latin America/Caribbean.....	8.225	149.3	170.5	-8.4	-9.2	0.1	0.2	14.2
Export Air Passenger Fares	100.000	154.0	160.3	-15.0	-11.5	-1.4	-0.4	4.1
Europe.....	32.543	211.7	199.3	-11.7	-0.3	-3.4	2.6	-5.9
Asia.....	27.664	132.7	139.4	-14.6	-23.0	0.4	-1.0	5.0
Latin America/Caribbean.....	22.287	154.5	164.2	-17.8	-13.5	2.4	1.4	6.3

¹ Relative importance figures are based on 2013 trade values.

NOTES: Data may be revised in each of the 3 months after original publication.

Dash = Not available

TECHNICAL NOTE

Import and Export Merchandise and Services Price Indexes - All indexes use a modified Laspeyres formula and are not seasonally adjusted. Price indexes are reweighted annually, with a 2-year lag in the weights. Published series use a base year of 2000=100 where possible. More detailed index series and additional information may be obtained at www.bls.gov/mxp or by calling (202) 691-7101.

Merchandise Goods Classification Systems - The merchandise price indexes are published using three classification systems. Items are classified by end use according to the Bureau of Economic Analysis Classification System, by industry according to the North American Industry Classification System (NAICS), and by product category according to the Harmonized System (HS). While classification by end use and product category are self-explanatory, some notes are in order for classifying items by industry. In the NAICS imports and exports tables, items are classified by output industry, not input industry. As an example, NAICS import index 326 (plastics and rubber products manufacturing) include outputs such as manufactured plastic rather than inputs such as petroleum. The NAICS classification structure also matches the classification system used by the Producer Price Index (PPI) to produce the NAICS primary products indexes.

Import Price Indexes - Products have been classified by the Harmonized Tariff Schedule of the United States Annotated (TSUSA). Import prices are based on U.S. dollar prices paid by the U.S. importer. The prices are generally either "free on board" (f.o.b.) foreign port or "cost, insurance, and freight" (c.i.f.) U.S. port transaction prices, depending on the practices of the individual industry. The index for crude petroleum is calculated from data collected by the U.S. Department of Energy.

Export Price Indexes - Products have been classified by the Harmonized Schedule B classification system of the U.S. Bureau of the Census. The prices used are generally either "free alongside ship" (f.a.s.) factory or "free on board" (f.o.b.) transaction prices, depending on the practices of the individual industry. Prices used in the grain index, excluding rice, are obtained from the U.S. Department of Agriculture.

Services Price Indexes - Starting in September 2008, the import air passenger fares indexes represent changes in the average revenue per passenger received by foreign carriers from U.S. residents and are calculated from data obtained from an airline consulting service. These data include tickets sold by travel agencies and travel websites. Tickets sold directly by the airlines are excluded, as are frequent flyer tickets generally. Starting in January 2008, the export air passenger fares indexes represent changes in the average revenue per passenger received by U.S. carriers from foreign residents and are calculated from data collected directly from airlines. These data include frequent flyer tickets and those sold by consolidators. Taxes and fees are included in the import air passenger fares indexes and excluded from the export air passenger fares indexes. The air freight indexes are calculated from data collected directly from airlines. These data exclude mail and passenger baggage. The scope of the service being priced is the movement of freight from airport to airport only, and does not include any ground transportation or port service. The air freight indexes are presented using two definitions: balance of payments (which represent transactions between U.S. and foreign residents) and international (which represent transactions inbound to and outbound from the U.S.). Fact sheets specifying detailed information for each services industry are available at www.bls.gov/mxp under "MXP Publications."

Import Indexes by Locality of Origin - Prices used in these indexes are a subset of the data collected for the import price indexes. Beginning with January 2002, the indexes are defined by locality of origin using a nomenclature based upon the North American Industry Classification System (NAICS). Nonmanufactured goods are defined as NAICS 11 and 21, and manufactured goods are defined as NAICS 31-33.

Revision Policy - To reflect the availability of late reports and corrections by respondents, monthly data may be revised in each of the 3 months after original publication. After 3 months, no further data revisions take place. For example, data first published in the January release will be subject to revision in the releases for February, March, and April.

Uses of the Data - The primary use of the indexes is to deflate trade statistics, notably the foreign trade sector of the National Income and Product Accounts (NIPA) constructed by the Department of Commerce. Other published indexes are useful for general market analysis. For trade in international services, balance of payments indexes are used for deflating NIPA, while international indexes are more appropriate for market analysis. Merchandise and services indexes also can be used to study U.S. competitiveness and to compute price elasticities, and the merchandise import indexes by country or region of origin are useful in terms of trade analysis.

Email Subscription - The U.S. import and export price indexes news release is available through an email subscription service at www.bls.gov/bls/list.htm.

Additional Information - More detailed data are available on the Import/Export Price Indexes home page at www.bls.gov/mxp. For import and export price indexes data requests, send an email to mxpinfo@bls.gov.

Information from this release will be made available to sensory impaired individuals upon request.
Voice phone: (202)-691-5200; Federal Relay Service: 1-(800)-877-8339.