

Transmission of material in this release is embargoed until
8:30 a.m. (EST) Wednesday, February 17, 2010

USDL-10-0200

Technical information: (202) 691-7101 • MXPinfo@bls.gov • www.bls.gov/mxp
Media contact: (202) 691-5902 • PressOffice@bls.gov

U.S. IMPORT AND EXPORT PRICE INDEXES – JANUARY 2010

The U.S. Import Price Index advanced 1.4 percent in January, the U.S. Bureau of Labor Statistics reported today, as fuel and nonfuel prices each increased. The rise in overall imports followed a 0.2 percent uptick in December. Export prices rose 0.8 percent in January after advancing 0.6 percent in December and 0.8 percent in November.

Chart 1. One-month percent change in the Import Price Index: January 2009 – January 2010

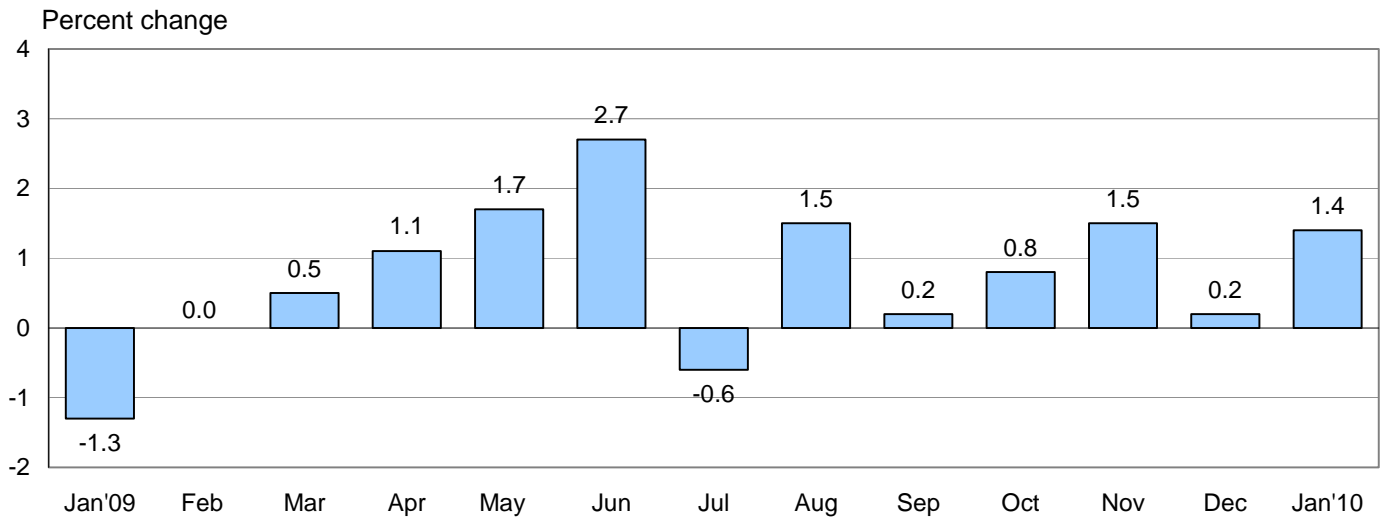
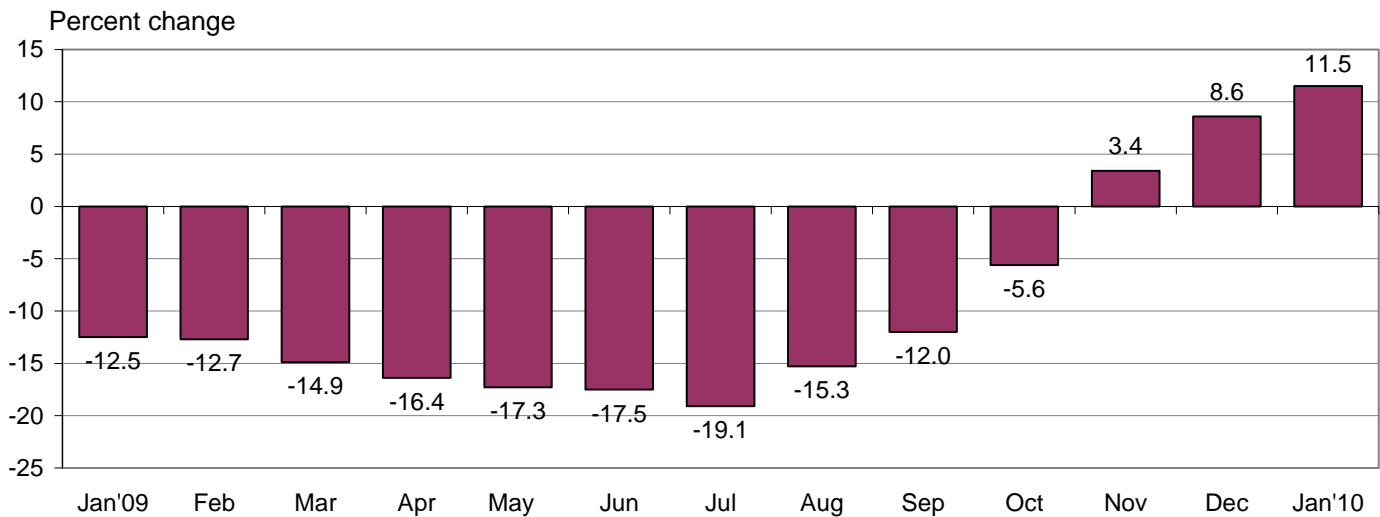


Chart 2. 12-month percent change in the Import Price Index: January 2009 – January 2010



All Imports: Import prices continued to increase in January, rising 1.4 percent after a 0.2 percent advance in December. Approximately three quarters of the increase was attributable to higher fuel prices. Import prices rose for the sixth consecutive month and 11.5 percent for the year ended in January, the largest 12-month gain for the index since a 13.1 percent jump for the September 2007-08 period.

Fuel Imports: Import fuel prices resumed an upward trend in January, rising 5.3 percent following a 0.6 percent drop in December. A 4.8 percent increase in petroleum prices and an 18.8 percent advance in natural gas prices both contributed to the January increase. Despite increasing in each of the past four months, natural gas prices fell 2.9 percent for the year ended in January. The price index for petroleum jumped 95.5 percent over the past year, driving overall fuel prices up 78.6 percent for the same period. The 12-month increase in fuel prices followed a 51.4 percent drop for the January 2008-09 period.

All Imports Excluding Fuel: Prices for nonfuel imports rose 0.4 percent for the fifth time in the past six months. The increase was led by higher prices for nonfuel industrial supplies and materials. Rising prices for foods, feeds, and beverages and consumer goods also factored into the overall advance. Nonfuel import prices increased 1.3 percent over the past year as the index has risen nine of the past ten months.

Table A. Percent changes

Month	IMPORTS			EXPORTS		
	All imports	Fuel imports	Nonfuel imports	All exports	Agricultural exports	Non-agricultural exports
2009						
January.....	-1.3	-4.7	-0.7	0.7	5.9	0.3
February.....	0.0	2.7	-0.4	-0.3	-1.7	-0.2
March.....	0.5	7.8	-0.6	-0.7	-3.4	-0.4
April.....	1.1	7.5	0.1	0.5	3.7	0.2
May.....	1.7	9.8	0.2	0.4	3.6	0.3
June.....	2.7	16.0	0.2	1.0	4.2	0.6
July.....	-0.6	-2.6	-0.2	-0.3	-4.9	0.1
August.....	1.5	7.0	0.4	0.6	0.2	0.7
September.....	0.2	-1.3	0.4	-0.2	-2.9	0.1
October.....	0.8 ^r	3.0 ^r	0.4	0.0	-0.7	0.1
November.....	1.5 ^r	6.3 ^r	0.4	0.8 ^r	3.9 ^r	0.5 ^r
December.....	0.2 ^r	-0.6 ^r	0.3 ^r	0.6	1.7 ^r	0.5
2010						
January.....	1.4	5.3	0.4	0.8	1.4	0.7
Jan. 2008 to 2009.....	-12.5	-51.4	-0.3	-3.4	-10.0	-2.7
Jan. 2009 to 2010.....	11.5	78.6	1.3	3.4	4.5	3.3

r Revised

Chart 3. One-month percent change in the Export Price Index: January 2009 – January 2010

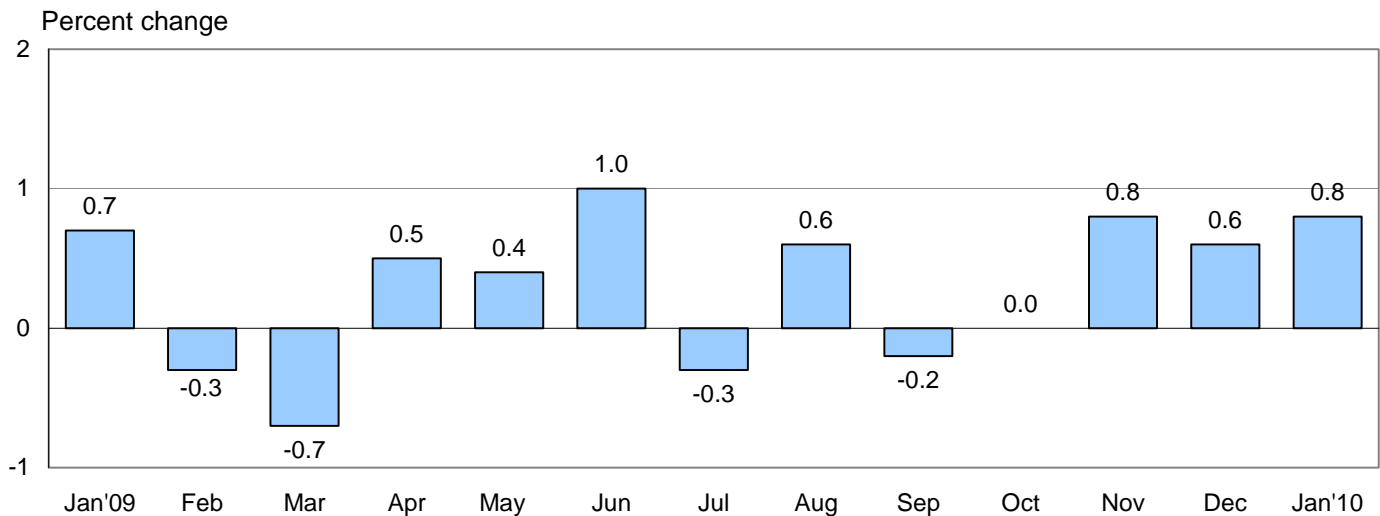
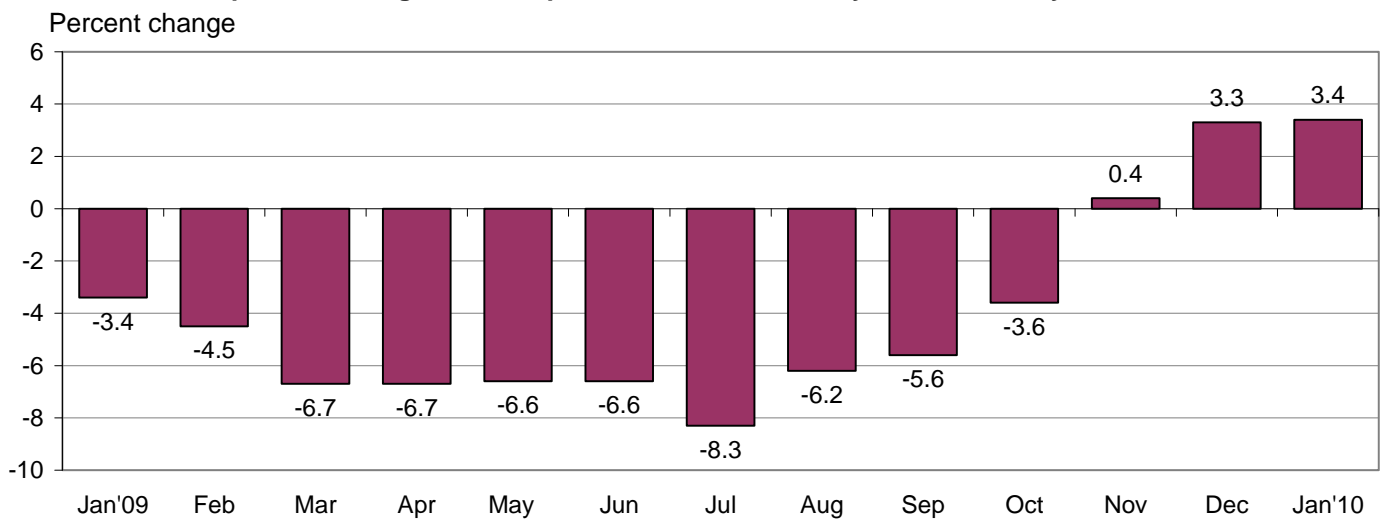


Chart 4. 12-month percent change in the Export Price Index: January 2009 – January 2010



All Exports: Export prices rose 0.8 percent in January following 0.6 percent and 0.8 percent increases the previous two months. The 2.3 percent increase for the November-January period was the largest three-month advance in export prices since a 2.9 percent rise for the three months ended in July 2008. The January increase was driven by higher nonagricultural prices which accounted for approximately eighty percent of the overall advance. The price index for overall exports rose 3.4 percent over the past 12 months, the largest year-over-year increase since a 4.0 percent advance for the year ended October 2008.

Agricultural Exports: The price index for agricultural exports increased 1.4 percent in January and 4.5 percent over the past year. The increase in January followed a 1.7 percent advance in December and was driven by rising nut prices. A 5.7 percent rise in soybean prices for the January 2009-10 period led the 12-month increase in agricultural prices.

All Exports Excluding Agriculture: Nonagricultural prices advanced 0.7 percent in January, the largest monthly increase since a similar 0.7 percent rise in August 2009. Increasing prices for nonagricultural industrial supplies and materials, capital goods, and automotive vehicles all contributed to the overall advance in January. The price index for nonagricultural export prices has risen each month since April and increased 3.3 percent for the year ended in January.

SELECTED JANUARY HIGHLIGHTS

Import Prices

Nonfuel Industrial Supplies and Materials: Prices for nonfuel industrial supplies and materials increased 1.5 percent in January after rising 1.8 percent in December. Rising prices for metals and chemicals led the advances in each month.

Finished Goods: Import finished goods prices were virtually unchanged in January, with a 0.2 percent increase in consumer goods prices offsetting 0.1 percent declines in the price indexes for capital goods and automotive vehicles. The increase in consumer goods prices was led by higher prices for medicinal, dental and pharmaceutical products. The January decreases for capital goods and automotive vehicles followed drops of 0.2 percent and 0.1 percent, respectively, in December.

Foods, Feeds, and Beverages: The price index for foods, feeds, and beverages rose 1.3 percent in January, the largest monthly advance since a 1.3 percent rise in August 2009. Rising prices for fruits and vegetables were the primary contributors to the January increase.

Imports by Locality of Origin: Higher fuel prices contributed to January increases in import prices from Canada, Mexico, and the European Union. Import prices from Canada rose 3.6 percent, the largest one-month increase since a 3.6 percent rise in June 2008. The price indexes for imports from Mexico and the European Union rose 1.7 percent and 0.2 percent, respectively, in January. In contrast, import prices from China fell 0.3 percent, the largest monthly drop since a 0.5 percent decline in April 2009. The January decline followed a 0.2 percent increase in December.

Transportation Services: Import air passenger fares fell 3.2 percent in January after increasing in each of the three previous months. Lower European, Asian, and Latin American/Caribbean fares all contributed to the decline. The price index for import air freight also decreased in January, falling 7.6 percent. The decline was led by a 10.1 percent decrease in Asian air freight prices.

Export Prices

Nonagricultural Industrial Supplies and Materials: Nonagricultural industrial supplies and materials prices increased 1.9 percent for the second consecutive month in January. Both advances were driven by higher prices for metals, chemicals, and paper.

Finished Goods: Prices for the major finished goods categories were mixed in January following an overall decline in December. The price indexes for capital goods and automotive vehicles each rose 0.2 percent, while prices for consumer goods fell 0.3 percent.

Transportation Services: Export air passenger fares advanced 4.2 percent in January following a 10.2 percent increase the previous month. For the second consecutive month, the rise was led by higher Asian and Latin American fares. The price index for export air freight rose 0.4 percent in January after advancing 0.4 percent in November and 0.7 percent in December.

Import and Export Price Index data for February 2010 are scheduled for release on Tuesday, March 16, 2010 at 8:30 a.m. (EDT).

Table 1. U.S. import price indexes and percent changes for selected categories of goods: January 2009 to January 2010

[2000=100, unless otherwise noted]

Description	End Use	Relative importance Dec. 2009 ¹	Index		Percent change				
			Dec. 2009	Jan. 2010	Annual	Monthly			
					Jan. 2009 to Jan. 2010	Sept. 2009 to Oct. 2009	Oct. 2009 to Nov. 2009	Nov. 2009 to Dec. 2009	Dec. 2009 to Jan. 2010
All commodities		100.000	124.3	126.0	11.5	0.8	1.5	0.2	1.4
All imports excluding petroleum		81.069	109.6	110.3	1.2	0.5	0.6	0.5	0.6
All imports excluding fuels (Dec. 2001=100) ..		79.431	113.0	113.4	1.3	0.4	0.4	0.3	0.4
Foods, feeds, & beverages	0	4.689	143.7	145.6	2.3	0.4	1.0	0.8	1.3
Agricultural foods, feeds & beverages, excluding distilled beverages.....	00	3.640	160.8	164.0	3.1	0.3	1.4	0.8	2.0
Nonagricultural foods (fish, distilled beverages).....	01	1.049	104.9	104.0	-0.5	0.8	-0.4	0.4	-0.9
Industrial supplies & materials	1	34.360	195.8	203.2	41.4	2.3	4.2	0.4	3.8
Industrial supplies & materials excluding petroleum.....		15.428	145.0	148.8	6.5	2.2	2.9	2.6	2.6
Industrial supplies & materials excluding fuels (Dec. 2001=100).....		13.790	158.6	161.0	8.3	1.4	1.3	1.8	1.5
Industrial supplies & materials, durable.....		8.636	152.3	154.8	12.3	1.0	1.3	2.2	1.6
Industrial supplies & materials nondurable excluding petroleum.....		5.154	136.1	141.5	-0.1	3.8	5.1	3.1	4.0
Fuels & lubricants.....	10	20.570	248.7	261.9	78.6	3.0	6.3	-0.6	5.3
Petroleum & petroleum products.....	100	18.932	268.4	281.2	95.5	2.4	5.4	-1.4	4.8
Crude.....	10000	13.957	273.7	284.8	95.2	3.8	4.9	-2.5	4.1
Fuels, n.e.s.-coals & gas.....	101	1.388	142.0	161.6	-4.6	14.0	22.1	10.8	13.8
Gas-natural.....	10110	1.051	128.5	152.7	-2.9	17.5	26.9	12.6	18.8
Paper & paper base stocks.....	11	0.668	103.1	103.6	-6.1	1.4	1.9	0.7	0.5
Materials associated with nondurable supplies & materials.....	12	4.563	141.0	142.9	3.0	2.2	1.2	1.1	1.3
Selected building materials.....	13	1.311	120.7	122.0	4.1	-0.3	-0.1	1.9	1.1
Unfinished metals related to durable goods.....	14	3.912	221.5	227.0	28.6	2.0	2.5	3.9	2.5
Finished metals related to durable goods. ...	15	1.786	139.8	141.4	2.7	0.4	0.9	0.6	1.1
Nonmetals related to durable goods.....	16	1.550	105.4	106.0	-1.0	0.5	0.4	0.2	0.6
Capital goods	2	23.648	91.8	91.7	-1.1	0.0	0.1	-0.2	-0.1
Electric generating equipment.....	20	2.983	111.3	112.0	0.8	0.5	0.3	0.2	0.6
Nonelectrical machinery.....	21	18.617	86.3	86.0	-1.7	-0.1	0.1	-0.2	-0.3
Transportation equipment excluding motor vehicles (Dec. 2001=100).....	22	2.048	122.5	123.9	2.7	-0.1	-0.2	-0.2	1.1
Automotive vehicles, parts & engines	3	12.297	108.8	108.7	0.6	0.2	0.1	-0.1	-0.1
Consumer goods, excluding automotives ..	4	25.007	104.3	104.5	0.1	0.2	0.0	0.0	0.2
Nondurables, manufactured.....	40	11.546	107.8	108.5	-0.4	0.0	0.1	-0.1	0.6
Durables, manufactured.....	41	12.232	100.8	100.7	0.6	0.2	0.0	-0.1	-0.1
Nonmanufactured consumer goods.....	42	1.229	102.1	102.1	-0.6	0.4	-0.5	1.0	0.0

¹ Relative importance figures are based on 2008 trade values.

NOTES: Data may be revised in each of the three months after original publication.

Dash = Not available

Table 2. U.S. export price indexes and percent changes for selected categories of goods: January 2009 to January 2010

[2000=100, unless otherwise noted]

Description	End Use	Relative importance Dec. 2009 ¹	Index		Percent change				
			Dec. 2009	Jan. 2010	Annual	Monthly			
					Jan. 2009 to Jan. 2010	Sept. 2009 to Oct. 2009	Oct. 2009 to Nov. 2009	Nov. 2009 to Dec. 2009	Dec. 2009 to Jan. 2010
All commodities.....		100.000	119.6	120.6	3.4	0.0	0.8	0.6	0.8
Agricultural commodities.....		8.993	164.6	166.9	4.5	-0.7	3.9	1.7	1.4
Nonagricultural commodities.....		91.008	116.4	117.2	3.3	0.1	0.5	0.5	0.7
Foods, feeds, & beverages.....	0	8.166	165.0	167.4	1.2	-1.1	3.5	1.9	1.5
Agricultural foods, feeds & beverages, excluding distilled beverages.....	00	7.600	167.9	170.5	1.7	-1.1	3.5	2.0	1.5
Nonagricultural foods (fish, distilled beverages).....	01	0.566	140.4	140.2	-5.2	-1.7	3.6	0.4	-0.1
Industrial supplies & materials.....	1	30.317	150.1	152.9	10.0	0.7	1.8	1.8	1.9
Industrial supplies & materials, durable.....		12.060	157.7	159.7	12.5	1.0	1.2	2.4	1.3
Industrial supplies & materials, nondurable.....		18.258	146.2	149.6	8.5	0.4	2.3	1.3	2.3
Agricultural industrial supplies & materials.....	10	1.393	152.4	153.0	21.8	1.2	5.5	0.4	0.4
Nonagricultural industrial supplies & materials.....		28.925	150.3	153.2	9.5	0.6	1.6	1.9	1.9
Fuels & lubricants.....	11	5.508	189.6	199.8	20.5	2.1	5.2	2.7	5.4
Nonagricultural supplies & materials excluding fuels & building materials.....	12	22.408	147.4	149.1	7.9	0.4	1.0	1.8	1.2
Selected building materials.....	13	1.009	113.5	115.1	-0.3	-1.3	0.4	0.4	1.4
Capital goods.....	2	39.097	103.2	103.4	1.3	-0.3	0.1	-0.1	0.2
Electrical generating equipment.....	20	3.666	109.5	110.0	2.5	0.5	0.9	0.6	0.5
Nonelectrical machinery.....	21	28.655	94.5	94.3	0.6	-0.5	0.2	-0.1	-0.2
Transportation equipment excluding motor vehicles (Dec. 2001=100).....	22	6.776	136.3	138.7	3.6	-0.1	-0.4	-0.1	1.8
Automotive vehicles, parts & engines.....	3	9.349	108.2	108.4	0.0	0.1	0.1	0.0	0.2
Consumer goods, excluding automotives..	4	13.071	109.4	109.1	-0.1	0.1	0.2	-0.1	-0.3
Nondurables, manufactured.....	40	5.951	110.0	110.1	1.2	-0.1	0.5	0.2	0.1
Durables, manufactured.....	41	5.856	109.2	108.4	-1.2	0.1	-0.2	-0.2	-0.7

¹ Relative importance figures are based on 2008 trade values.

NOTES: Data may be revised in each of the three months after original publication.

Dash = Not available

Table 3. U.S. import price indexes and percent changes for selected categories of goods: January 2009 to January 2010

[December 2005=100, unless otherwise noted]

Description	NAICS	Relative importance Dec. 2009 ¹	Index		Percent change				
			Dec. 2009	Jan. 2010	Annual	Monthly			
					Jan. 2009 to Jan. 2010	Sept. 2009 to Oct. 2009	Oct. 2009 to Nov. 2009	Nov. 2009 to Dec. 2009	Dec. 2009 to Jan. 2010
Nonmanufactured articles.....		17.768	123.3	129.6	64.3	3.9	6.0	-0.9	5.1
Agriculture, forestry, fishing and hunting...	11	1.706	137.7	144.3	4.0	0.2	2.3	1.3	4.8
Crop production.....	111	1.230	145.4	152.7	-0.3	-0.1	2.6	1.4	5.0
Mining.....	21	16.062	121.6	127.9	75.7	4.3	6.4	-1.1	5.2
Mining (except oil and gas) (Dec. 2006=100).....	212	0.515	128.9	127.8	-2.1	1.4	-1.0	-1.0	-0.9
Manufactured articles.....		81.741	108.9	109.5	3.9	0.3	0.6	0.3	0.6
Manufactured goods, part 1.....	31	10.179	107.6	107.9	0.5	0.3	0.2	0.1	0.3
Food manufacturing.....	311	2.525	121.2	121.9	3.3	0.6	1.0	1.2	0.6
Beverage and tobacco product manufacturing.....	312	0.931	108.8	108.6	1.8	0.3	0.5	0.6	-0.2
Textile product mills.....	314	0.781	100.3	101.3	0.3	1.0	0.0	-0.1	1.0
Apparel manufacturing.....	315	3.990	100.7	101.0	-1.4	-0.1	-0.1	-1.0	0.3
Leather and allied product manufacturing. . .	316	1.540	107.0	106.9	-0.7	-0.1	0.0	-0.1	-0.1
Manufactured goods, part 2.....	32	17.775	118.4	121.3	15.0	0.1	1.9	0.9	2.4
Wood product manufacturing.....	321	0.767	95.9	97.9	7.1	-0.4	-0.1	2.1	2.1
Paper manufacturing.....	322	1.183	101.0	101.2	-6.4	0.4	1.1	0.5	0.2
Petroleum and coal products manufacturing.....	324	4.042	123.4	131.0	89.0	-1.5	6.2	1.2	6.2
Chemical manufacturing.....	325	8.871	122.1	124.0	3.1	1.0	0.7	0.7	1.6
Plastics and rubber products manufacturing.....	326	1.806	113.3	114.6	0.9	0.1	0.6	0.4	1.1
Nonmetallic mineral product manufacturing.....	327	0.997	119.4	120.4	1.6	-0.3	-0.1	0.2	0.8
Manufactured goods, part 3.....	33	53.787	106.2	106.2	1.3	0.3	0.2	0.2	0.0
Primary metal manufacturing.....	331	4.544	145.5	148.7	19.5	1.4	2.3	3.6	2.2
Fabricated metal product manufacturing. . .	332	2.719	116.4	116.4	-2.0	0.3	0.2	0.2	0.0
Machinery manufacturing.....	333	6.885	113.2	112.1	0.6	0.4	0.0	0.3	-1.0
Computer and electronic product manufacturing.....	334	15.536	88.7	88.3	-1.7	0.0	-0.1	-0.2	-0.5
Electrical equipment, appliance, and component manufacturing.....	335	3.890	112.9	113.2	-0.2	0.1	0.1	0.1	0.3
Transportation equipment manufacturing....	336	13.605	106.2	106.2	1.1	0.3	0.0	-0.1	0.0
Furniture and related product manufacturing.....	337	1.374	108.2	108.2	-1.8	-0.7	-0.4	0.3	0.0
Miscellaneous manufacturing.....	339	5.235	112.5	112.3	1.3	0.4	0.3	-0.1	-0.2

¹ Relative importance figures are based on 2008 trade values.

NOTES: Data may be revised in each of the three months after original publication.

Dash = Not available

Table 4. U.S. export price indexes and percent changes for selected categories of goods: January 2009 to January 2010

[December 2005=100, unless otherwise noted]

Description	NAICS	Relative importance Dec. 2009 ¹	Index		Percent change				
			Dec. 2009	Jan. 2010	Annual	Monthly			
					Jan. 2009 to Jan. 2010	Sept. 2009 to Oct. 2009	Oct. 2009 to Nov. 2009	Nov. 2009 to Dec. 2009	Dec. 2009 to Jan. 2010
Nonmanufactured articles.....		6.664	127.2	131.5	7.5	3.0	3.9	3.5	3.4
Agriculture, forestry, fishing and hunting...	11	4.755	143.6	148.1	3.5	0.5	6.1	2.6	3.1
Crop production.....	111	4.412	148.1	152.3	3.4	0.7	6.3	2.7	2.8
Mining.....	21	1.909	90.7	94.1	23.2	12.0	-3.1	7.0	3.7
Mining (except oil and gas).....	212	1.343	93.5	96.9	14.5	3.2	0.2	1.0	3.6
Manufactured articles.....		90.734	109.9	110.5	2.7	-0.1	0.6	0.4	0.5
Manufactured goods, part 1.....	31	6.632	122.3	122.8	5.0	-0.7	0.8	0.6	0.4
Food manufacturing.....	311	4.494	137.1	137.1	5.9	-1.2	1.0	0.6	0.0
Beverage and tobacco product manufacturing.....	312	0.542	107.7	107.7	4.1	0.9	0.0	-0.3	0.0
Apparel manufacturing.....	315	0.380	102.4	102.4	0.8	0.1	0.0	-0.4	0.0
Manufactured goods, part 2.....	32	23.207	113.2	115.0	4.9	-0.5	1.7	0.7	1.6
Wood product manufacturing.....	321	0.443	109.0	109.7	0.7	0.7	0.6	0.6	0.6
Paper manufacturing.....	322	1.929	112.4	113.4	0.6	0.9	0.2	1.3	0.9
Petroleum and coal products manufacturing.....	324	3.460	113.2	121.9	27.1	0.7	9.8	0.3	7.7
Chemical manufacturing.....	325	14.411	115.0	115.5	3.2	-1.0	1.0	0.9	0.4
Plastics and rubber products manufacturing.....	326	2.114	107.4	106.6	-3.0	-0.6	0.1	0.1	-0.7
Nonmetallic mineral product manufacturing.....	327	0.850	112.1	116.8	3.3	-0.2	0.2	0.2	4.2
Manufactured goods, part 3.....	33	60.896	107.5	107.5	1.7	0.1	0.2	0.3	0.0
Primary metal manufacturing.....	331	4.827	138.0	139.4	16.4	3.0	2.6	4.3	1.0
Fabricated metal product manufacturing.	332	2.840	121.8	121.0	-0.5	-0.2	0.0	0.3	-0.7
Machinery manufacturing.....	333	12.730	112.9	113.3	1.3	0.1	0.0	0.1	0.4
Computer and electronic product manufacturing.....	334	16.043	92.9	92.6	-0.2	-0.9	0.2	-0.5	-0.3
Electrical equipment, appliance, and component manufacturing.....	335	3.529	109.1	109.9	3.2	-0.2	1.0	0.9	0.7
Transportation equipment manufacturing....	336	15.406	110.0	110.6	1.6	0.1	-0.2	-0.1	0.5
Miscellaneous manufacturing.....	339	5.155	110.5	108.8	-2.1	-0.3	0.1	0.0	-1.5

¹ Relative importance figures are based on 2008 trade values.

NOTES: Data may be revised in each of the three months after original publication.

Dash = Not available

Table 5. U.S. import price indexes and percent changes for selected categories of goods: January 2009 to January 2010

[2009=100, unless otherwise noted]

Description	Harmoni- zied system	Relative importance Dec. 2009 ¹	Index		Percent change				
			Dec. 2009	Jan. 2010	Annual	Monthly			
					Jan. 2009 to Jan. 2010	Sept. 2009 to Oct. 2009	Oct. 2009 to Nov. 2009	Nov. 2009 to Dec. 2009	Dec. 2009 to Jan. 2010
Live animals; animal products.....	I	1.050	132.0	131.2	4.6	0.8	0.3	-0.2	-0.6
Meat and edible meat offal.....	02	0.229	159.1	160.5	9.3	-1.3	1.7	0.8	0.9
Fish and crustaceans, molluscs and other aquatic invertebrates.....	03	0.549	100.2	99.1	-1.0	1.5	-0.4	-0.1	-1.1
Vegetable products.....	II	1.445	161.9	168.2	-2.1	-0.2	0.9	1.4	3.9
Edible vegetables, roots, and tubers.....	07	0.377	287.1	305.3	-11.8	0.4	1.4	-3.9	6.3
Edible fruit and nuts; peel of citrus fruit or melons.....	08	0.383	99.4	106.8	-4.7	2.9	-3.4	1.1	7.4
Coffee, tea, mate and spices.....	09	0.288	167.2	167.2	11.5	1.4	2.4	3.9	0.0
Animal or vegetable fats and oils (Dec. 2009=100).....	III	0.208	100.0	102.5	-	-	-	-	2.5
Prepared foodstuffs, beverages, and tobacco.....	IV	2.298	139.3	140.5	4.1	0.3	1.0	0.8	0.9
Cocoa and cocoa preparations (Dec. 2009=100).....	18	0.212	100.0	103.2	-	-	-	-	3.2
Preparations of cereals, flour, starch or milk; bakers' wares (Dec. 2007=100).....	19	0.241	112.4	114.9	7.4	-1.9	1.0	0.5	2.2
Preparations of vegetables, fruit, nuts, or other parts of plants.....	20	0.285	126.8	130.6	-1.0	0.2	0.5	0.2	3.0
Beverages, spirits, and vinegar.....	22	0.921	118.7	118.1	2.6	0.3	0.9	0.5	-0.5
Mineral products.....	V	20.562	250.5	263.8	75.5	3.0	6.1	-0.6	5.3
Salt; sulfur; earths and stone; plaster materials, lime & cement (Dec. 2009=100).....	25	0.188	100.0	100.7	-	-	-	-	0.7
Mineral fuels, oils and residuals, bituminous substances and mineral waxes.....	27	20.168	247.5	260.9	78.0	3.1	6.3	-0.6	5.4
Products of the chemical or allied industries.....	VI	8.191	135.5	137.0	4.3	1.3	1.0	1.0	1.1
Inorganic chemicals.....	28	0.883	250.0	247.4	28.3	10.9	2.8	2.0	-1.0
Organic chemicals.....	29	2.725	129.8	131.3	9.1	0.6	1.0	0.9	1.2
Pharmaceutical products.....	30	2.837	116.3	118.3	2.8	-0.1	1.0	1.0	1.7
Fertilizers (Dec. 2009=100).....	31	0.322	100.0	104.7	-	-	-	-	4.7
Tanning & dyeing extracts; dye & pigments; varnish & paints; putty.....	32	0.167	107.2	107.7	2.3	-0.5	-0.3	1.4	0.5
Essential oils and resinoids (Dec. 2001=100).....	33	0.418	120.2	121.1	-0.7	0.9	-1.8	0.3	0.7
Miscellaneous chemical products.....	38	0.489	90.5	91.5	-4.0	-0.1	0.2	0.3	1.1
Plastics and articles thereof; rubber and articles thereof.....	VII	2.913	130.3	132.2	2.6	0.6	0.8	1.1	1.5
Plastics and articles thereof.....	39	1.841	126.6	127.4	1.0	0.5	0.6	1.0	0.6
Rubber and articles thereof.....	40	1.072	137.6	141.6	5.5	1.0	1.0	1.3	2.9
Raw hides, skins, leather, furskins, travel goods, etc.....	VIII	0.597	113.6	113.7	-0.3	-0.1	0.0	0.0	0.1
Articles of leather; travel goods, bags, etc. of various materials.....	42	0.546	114.6	114.8	0.0	0.1	0.0	0.0	0.2
Wood, wood charcoal, cork, straw, basketware and wickerwork.....	IX	0.792	116.6	119.2	6.7	-0.6	-0.3	2.4	2.2
Woodpulp, recovered paper, and paper products.....	X	1.341	106.3	106.0	-6.0	0.3	0.9	0.5	-0.3
Pulp wood, waste paper, and paperboard (Dec. 2009=100).....	47	0.180	100.0	102.5	-	-	-	-	2.5
Paper and paperboard; articles of paper pulp, paper or paperboard.....	48	0.889	101.9	100.9	-11.4	-0.3	0.2	0.6	-1.0
Printed matter.....	49	0.271	120.6	120.5	0.6	0.0	-0.1	0.5	-0.1

See footnotes at end of table.

Table 5. U.S. import price indexes and percent changes for selected categories of goods: January 2009 to January 2010 — Continued
 [2000=100, unless otherwise noted]

Description	Harmonized system	Relative importance Dec. 2009 ¹	Index		Percent change				
			Dec. 2009	Jan. 2010	Annual	Monthly			
					Jan. 2009 to Jan. 2010	Sept. 2009 to Oct. 2009	Oct. 2009 to Nov. 2009	Nov. 2009 to Dec. 2009	Dec. 2009 to Jan. 2010
Textile and textile articles.....	XI	5.010	102.3	102.8	-0.3	0.3	-0.1	-0.8	0.5
Articles of apparel and clothing accessories, knitted or crocheted.....	61	1.915	97.3	98.1	-1.9	0.0	-0.2	-2.1	0.8
Articles of apparel and clothing accessories, not knitted or crocheted.....	62	1.891	102.7	102.6	-0.9	-0.2	-0.1	0.1	-0.1
Made-up or worn textile articles.....	63	0.531	91.9	93.1	1.3	1.2	-0.1	0.2	1.3
Headgear, umbrellas, artificial flowers, etc. ...	XII	1.238	107.4	107.2	-0.7	-0.1	-0.1	0.0	-0.2
Footwear and parts of such articles.....	64	1.052	106.4	106.2	-1.0	-0.1	-0.1	-0.1	-0.2
Stone, plaster, cement, asbestos, ceramics, glass etc.....	XIII	0.901	124.6	124.6	1.0	-0.1	-0.1	0.2	0.0
Articles of stone, plaster, cement, asbestos, or mica (Dec. 2001=100).....	68	0.320	117.9	118.0	-1.1	0.0	-0.1	0.3	0.1
Ceramic products.....	69	0.282	139.9	139.9	5.7	0.1	0.1	0.1	0.0
Glass and glassware.....	70	0.299	115.9	115.6	-1.1	-0.4	-0.3	0.0	-0.3
Pearls, stones, precious metals, imitation jewelry, and coins.....	XIV	2.759	155.8	155.5	17.7	3.0	2.1	4.1	-0.2
Base metals and articles of base metals.....	XV	5.727	166.4	169.8	7.7	0.5	1.1	1.0	2.0
Iron and steel.....	72	1.219	196.8	200.3	-4.4	1.1	1.7	-0.3	1.8
Articles of iron or steel.....	73	1.747	138.4	138.2	-9.9	1.0	0.4	0.2	-0.1
Copper and articles thereof.....	74	0.667	316.8	332.7	91.3	1.1	2.5	4.7	5.0
Nickel and articles thereof (Dec. 2009=100)...	75	0.156	100.0	99.2	-	-	-	-	-0.8
Aluminum and articles thereof.....	76	0.781	125.8	133.4	23.1	-1.8	1.6	2.3	6.0
Tools, implements, cutlery, spoons and forks, of base metal; parts thereof.....	82	0.368	117.6	118.1	-0.7	-0.3	0.1	0.6	0.4
Miscellaneous articles of base metal.....	83	0.420	127.5	127.5	-3.3	-0.5	-0.4	0.0	0.0
Machinery, electrical equipment, TV image and sound recorders, parts, etc.....	XVI	26.070	87.2	87.1	-0.2	0.1	0.0	-0.1	-0.1
Machinery and mechanical appliances; parts thereof.....	84	13.075	88.4	88.1	0.0	-0.1	0.0	0.1	-0.3
Electrical machinery and equip, sound and TV recorders & reproducers, parts.....	85	12.995	86.1	86.2	-0.3	0.2	0.1	-0.3	0.1
Vehicles, aircraft, vessels and associated transport equipment.....	XVII	11.531	110.3	110.1	0.6	0.2	0.0	-0.1	-0.2
Motor vehicles and their parts.....	87	10.404	109.2	109.0	0.6	0.2	0.1	-0.2	-0.2
Aircraft, spacecraft, and parts thereof (Dec. 2002=100).....	88	1.032	115.4	115.6	-0.3	0.0	0.0	-0.3	0.2
Optical, photo, measuring, medical & musical instruments; & timepieces.....	XVIII	3.362	102.5	101.7	0.3	0.3	-0.2	0.1	-0.8
Optical, photographic, measuring and medical instruments.....	90	3.043	100.1	99.3	0.0	0.1	-0.1	0.0	-0.8
Clocks and watches and parts thereof.....	91	0.238	125.0	124.7	2.0	0.5	0.2	0.1	-0.2
Miscellaneous manufactured articles.....	XX	3.946	107.1	107.3	-0.5	-0.5	-0.1	-0.2	0.2
Furniture & stuffed furnishings; lamps & lighting fittings, nesoi; prefab bldgs.....	94	2.027	111.1	111.0	-1.7	-0.6	-0.1	-0.2	-0.1
Toys, games and sports equipment; parts and accessories thereof.....	95	1.718	100.9	101.0	0.4	-0.2	-0.1	-0.2	0.1
Miscellaneous manufactured articles.....	96	0.201	117.1	119.7	6.3	0.3	0.3	0.3	2.2

¹ Relative importance figures are based on 2008 trade values.

NOTES: Data may be revised in each of the three months after original publication.

Dash = Not available

Table 6. U.S. export price indexes and percent changes for selected categories of goods: January 2009 to January 2010

[2000=100, unless otherwise noted]

Description	Harmoni- zied system	Relative importance Dec. 2009 ¹	Index		Percent change				
			Dec. 2009	Jan. 2010	Annual	Monthly			
					Jan. 2009 to Jan. 2010	Sept. 2009 to Oct. 2009	Oct. 2009 to Nov. 2009	Nov. 2009 to Dec. 2009	Dec. 2009 to Jan. 2010
Live animals; animal products.....	I	1.607	153.2	154.5	-1.6	-2.0	0.7	1.3	0.8
Meat & edible meat offal (Dec. 2006=100). . .	02	0.894	123.2	122.2	0.8	-2.7	0.2	2.0	-0.8
Fish and crustaceans, molluscs and other aquatic invertebrates.....	03	0.295	136.6	139.1	-8.4	-2.2	3.2	0.8	1.8
Vegetable products.....	II	4.453	186.6	191.7	0.3	-0.7	4.9	1.2	2.7
Edible fruit and nuts; peel of citrus fruit or melons.....	08	0.694	112.2	124.9	18.5	3.5	-3.0	4.0	11.3
Cereals.....	10	1.800	193.1	196.4	-6.9	2.3	8.8	3.2	1.7
Oilseeds and misc. grains, seeds, fruits, plants, straw and fodder.....	12	1.420	209.6	209.6	3.9	-6.0	5.4	0.0	0.0
Animal or vegetable fats and oils (Dec. 2009=100).....	III	0.291	100.0	103.0	-	-	-	-	3.0
Prepared foodstuffs, beverages, and tobacco.....	IV	2.557	141.8	141.9	5.4	-0.7	1.0	0.9	0.1
Preparations of vegetables, fruit, nuts or other parts of plants (Dec. 2009=100).....	20	0.338	100.0	100.8	-	-	-	-	0.8
Miscellaneous edible preparations.....	21	0.423	119.5	120.1	0.5	1.4	0.0	-0.1	0.5
Beverages, spirits, and vinegar (Dec. 2008=100).....	22	0.341	103.8	104.4	3.7	1.6	0.3	0.0	0.6
Residues and waste from the food industries; prepared animal feed.....	23	0.629	198.8	196.9	8.1	-7.4	2.7	1.4	-1.0
Mineral products.....	V	5.444	225.1	238.6	23.3	5.1	4.2	2.6	6.0
Mineral fuels, oils and residuals, bituminous substances and mineral waxes.....	27	4.833	219.3	232.3	23.0	5.2	5.1	2.9	5.9
Products of the chemical or allied industries.....	VI	11.754	137.6	137.5	1.3	-0.9	1.1	1.0	-0.1
Inorganic chemicals.....	28	1.004	168.6	164.2	-20.2	-5.9	0.4	0.7	-2.6
Organic chemicals.....	29	2.982	144.8	144.8	11.6	-1.4	3.0	1.5	0.0
Pharmaceutical products.....	30	2.905	117.5	118.7	2.2	-0.1	0.6	0.3	1.0
Tanning or dyeing extracts, dyes, paints, varnish, putty, & inks.....	32	0.548	114.8	112.6	-0.4	0.3	0.2	-0.3	-1.9
Essential oils and resinoids; perfumery cosmetic or toilet preparations.....	33	0.752	127.0	123.8	-3.7	0.1	0.6	0.0	-2.5
Soap; lubricants; waxes, polishing or scouring products; candles, pastes.....	34	0.442	117.5	117.1	-0.9	0.4	0.6	0.2	-0.3
Miscellaneous chemical products.....	38	2.019	134.4	134.7	1.8	0.2	0.2	0.8	0.2
Plastics and articles thereof; rubber and articles thereof.....	VII	5.073	134.1	134.8	0.6	-1.0	0.1	0.3	0.5
Plastics and articles thereof.....	39	4.121	128.1	128.0	0.5	-1.3	0.0	0.3	-0.1
Rubber and articles thereof.....	40	0.952	160.8	165.6	1.0	0.3	0.5	0.2	3.0
Raw hides, skins, leather, furskins, travel goods, etc.....	VIII	0.340	106.2	108.2	29.0	0.4	2.6	4.9	1.9
Wood, wood charcoal, cork, straw, basketware and wickerwork.....	IX	0.547	104.8	108.0	1.4	0.4	0.6	1.0	3.1
Woodpulp, recovered paper, and paper products.....	X	2.416	110.5	112.5	6.2	0.5	0.6	1.3	1.8
Woodpulp and recovered paper.....	47	0.608	110.7	117.4	36.0	3.3	2.5	5.0	6.1
Paper and paperboard; articles of paper pulp, paper or paperboard.....	48	1.294	109.8	110.5	-2.1	0.2	-0.1	0.1	0.6
Printed material.....	49	0.514	116.3	116.1	0.5	-1.8	0.6	0.0	-0.2
Textile and textile articles.....	XI	1.960	109.2	109.9	5.8	2.0	3.4	0.1	0.6
Cotton, including yarns and woven fabrics thereof.....	52	0.603	114.3	115.6	25.0	6.6	11.1	0.4	1.1

See footnotes at end of table.

Table 6. U.S. export price indexes and percent changes for selected categories of goods: January 2009 to January 2010 — Continued
 [2000=100, unless otherwise noted]

Description	Harmoni- zied system	Relative importance Dec. 2009 ¹	Index		Percent change				
			Dec. 2009	Jan. 2010	Annual	Monthly			
					Jan. 2009 to Jan. 2010	Sept. 2009 to Oct. 2009	Oct. 2009 to Nov. 2009	Nov. 2009 to Dec. 2009	Dec. 2009 to Jan. 2010
Stone, plaster, cement, asbestos, ceramics, glass etc. (Dec. 2008=100).....	XIII	0.801	114.5	118.2	2.0	0.1	0.0	0.0	3.2
Glass and glassware.....	70	0.429	97.6	100.3	-0.3	0.0	0.0	0.0	2.8
Pearls, stones, precious metals, imitation jewelry, and coins.....	XIV	4.797	196.9	196.8	19.9	2.8	2.7	5.4	-0.1
Base metals and articles of base metals.....	XV	5.733	153.9	157.6	8.8	0.1	0.3	0.9	2.4
Iron and steel.....	72	1.604	172.7	179.4	4.7	0.1	-1.3	0.2	3.9
Articles of iron or steel.....	73	1.543	157.6	157.8	-4.7	-0.4	0.3	0.0	0.1
Copper and articles thereof.....	74	0.561	213.6	226.2	93.2	0.5	4.4	4.8	5.9
Aluminum and articles thereof.....	76	0.858	116.1	122.8	26.7	-0.4	1.2	2.1	5.8
Tools, implements, cutlery, spoons and forks, of base metal; parts thereof.....	82	0.421	123.8	123.9	1.8	0.6	0.0	0.0	0.1
Miscellaneous articles of base metal.....	83	0.316	122.3	122.4	-4.7	0.3	0.1	0.1	0.1
Machinery, electrical equipment, TV image and sound recorders, parts, etc.....	XVI	30.872	95.5	95.6	0.7	-0.3	0.2	-0.1	0.1
Machinery and mechanical appliances; parts thereof.....	84	18.005	105.9	105.9	1.0	0.1	0.2	-0.2	0.0
Electrical machinery and equipment and parts and accessories thereof.....	85	12.867	84.1	84.5	0.6	-1.1	0.4	-0.1	0.5
Vehicles, aircraft, vessels and associated transport equipment.....	XVII	13.443	120.0	120.6	1.5	0.1	-0.2	-0.1	0.5
Motor vehicles and their parts.....	87	8.693	107.8	107.9	0.2	0.3	0.0	0.0	0.1
Ships, boats and floating structures (Dec. 2009=100).....	89	0.299	100.0	100.1	-	-	-	-	0.1
Optical, photo, measuring, medical & musical instruments; & timepieces.....	XVIII	6.209	108.6	107.1	0.1	-0.1	0.0	0.1	-1.4
Miscellaneous manufactured articles.....	XX	1.552	107.7	108.5	2.1	0.1	0.1	-0.6	0.7
Furniture; stuffed furnishings; lamps and lighting fittings nesoi;.....	94	0.769	117.6	117.3	1.5	0.3	0.2	-1.4	-0.3
Toys, games and sports equipment; parts and accessories thereof.....	95	0.667	93.3	95.3	2.5	-0.2	0.1	0.1	2.1

1 Relative importance figures are based on 2008 trade values.

NOTES: Data may be revised in each of the three months after original publication.

Dash = Not available

Table 7. U.S. import price indexes and percent changes by locality of origin: January 2009 to January 2010
 [2000=100, unless otherwise noted]

Description	Percent of U.S. imports ¹	Index		Percent change				
		Dec. 2009	Jan. 2010	Annual	Monthly			
				Jan. 2009 to Jan. 2010	Sept. 2009 to Oct. 2009	Oct. 2009 to Nov. 2009	Nov. 2009 to Dec. 2009	Dec. 2009 to Jan. 2010
Industrialized Countries²	41.082	124.0	125.6	6.1	1.0	1.3	0.6	1.3
Nonmanufactured articles.....	5.687	199.0	212.3	45.1	6.6	8.6	1.7	6.7
Manufactured articles.....	34.943	118.0	118.7	2.8	0.4	0.6	0.6	0.6
Other Countries³	58.918	122.1	124.0	13.7	0.7	1.1	0.0	1.6
Nonmanufactured articles.....	15.714	248.2	258.9	68.7	3.3	5.3	-1.3	4.3
Manufactured articles.....	43.010	104.5	105.1	3.1	-0.2	-0.1	0.5	0.6
Canada	15.923	137.7	142.6	11.8	1.2	2.8	1.0	3.6
Nonmanufactured articles.....	5.257	191.8	205.4	43.2	6.4	9.8	1.5	7.1
Manufactured articles.....	10.335	127.4	130.1	3.4	-0.2	0.7	0.7	2.1
European Union⁴	16.799	127.4	127.6	2.6	0.6	0.6	0.4	0.2
Nonmanufactured articles.....	0.211	251.6	258.5	16.4	3.9	1.6	1.2	2.7
Manufactured articles.....	16.491	124.9	125.1	2.5	0.5	0.7	0.3	0.2
France (Dec. 2003=100)	1.948	124.1	124.7	4.0	0.1	0.7	0.1	0.5
Germany (Dec. 2003=100)	4.572	113.2	114.0	4.3	0.7	1.1	1.0	0.7
United Kingdom (Dec. 2003=100)	2.566	124.7	125.4	5.9	1.0	0.6	0.8	0.6
Latin America⁵	17.999	153.9	157.1	17.2	1.8	2.2	-0.4	2.1
Nonmanufactured articles.....	6.186	273.2	285.5	54.2	3.3	5.4	-2.4	4.5
Manufactured articles.....	11.730	129.4	130.2	4.2	1.0	0.6	0.6	0.6
Mexico (Dec. 2003=100)	10.275	135.1	137.4	7.6	1.1	1.0	-1.1	1.7
Nonmanufactured articles (Dec. 2008=100).....	2.141	142.8	150.8	53.3	4.6	5.1	-4.4	5.6
Manufactured articles (Dec. 2008=100)....	8.085	96.1	96.6	-1.7	0.1	-0.4	0.0	0.5
Pacific Rim (Dec. 2003=100)⁶	31.500	100.3	100.4	0.2	-0.1	0.1	0.4	0.1
China (Dec. 2003=100)	16.449	100.6	100.3	-1.7	-0.1	0.0	0.2	-0.3
Japan	6.678	97.8	97.8	1.7	0.3	0.0	0.3	0.0
Asian NICs⁷	5.003	86.4	87.3	0.6	-0.3	0.0	0.7	1.0
ASEAN (Dec. 2003=100)⁸	5.274	97.5	97.1	1.1	-0.6	0.4	0.6	-0.4
Asia Near East (Dec. 2003=100)⁹	5.380	198.7	205.4	57.2	3.4	1.3	-1.7	3.4

1 Percentage of trade figures are based on 2008 trade values.

2 Includes Western Europe, Canada, Japan, Australia, New Zealand and South Africa.

3 Includes Eastern Europe, Latin America, OPEC countries, and other countries in Asia, Africa and the Western Hemisphere.

4 Includes European Union countries.

5 Includes Mexico, Central America, South America and the Caribbean.

6 Includes China, Japan, Australia, Brunei, Indonesia, Macao, Malaysia, New Zealand, Papua New Guinea, Philippines and Asian Newly Industrialized Countries.

7 Asian Newly Industrialized Countries. Includes Hong Kong, Singapore, South Korea and Taiwan.

8 Association of Southeast Asian Nations. Includes Brunei, Cambodia, Indonesia, Laos, Malaysia, Myanmar, Philippines, Singapore, Thailand and Vietnam.

9 Includes Bahrain, Iran, Iraq, Israel, Jordan, Kuwait, Lebanon, Oman, Qatar, Saudi Arabia, Syria, United Arab Emirates and Yemen.

NOTES: Data may be revised in each of the three months after original publication.

Regions are not mutually exclusive.

Dash = Not available

Table 8. U.S. international price indexes and percent changes for selected transportation services: January 2009 to January 2010

[2000=100, unless otherwise noted]

Description	Relative importance Dec. 2009 ¹	Index		Percent change				
		Dec. 2009	Jan. 2010	Annual	Monthly			
				Jan. 2009 to Jan. 2010	Sept. 2009 to Oct. 2009	Oct. 2009 to Nov. 2009	Nov. 2009 to Dec. 2009	Dec. 2009 to Jan. 2010
Air Freight								
Import Air Freight	100.000	163.9	151.5	10.3	8.4	4.4	7.5	-7.6
Europe (Dec. 2003=100).....	21.974	140.7	138.4	4.8	2.1	1.4	2.1	-1.6
Asia.....	71.679	150.9	135.7	12.6	11.7	5.5	10.1	-10.1
Export Air Freight	100.000	122.7	123.2	-5.9	-0.2	0.4	0.7	0.4
Europe (Dec. 2006=100).....	33.239	112.9	112.9	-9.1	0.0	0.0	1.7	0.0
Inbound Air Freight	100.000	147.3	141.0	5.2	5.8	4.1	5.0	-4.3
Europe (Dec. 2003=100).....	23.483	129.5	128.8	-0.8	1.4	1.0	1.4	-0.5
Asia.....	67.506	136.0	127.5	9.0	8.7	5.7	7.1	-6.3
Outbound Air Freight	100.000	114.5	114.8	-8.3	0.4	0.8	1.1	0.3
Europe (Dec. 2003=100).....	40.908	131.6	132.0	-10.3	0.0	0.2	1.5	0.3
Asia.....	42.381	105.1	105.7	-2.3	0.2	1.1	1.0	0.6
Air Passenger Fares								
Import Air Passenger Fares	100.000	152.3	147.4	-0.7	6.4	0.5	3.3	-3.2
Europe.....	39.965	156.0	153.5	-0.8	8.6	0.0	-2.3	-1.6
Asia.....	29.801	140.4	132.9	-1.2	4.1	-2.3	11.0	-5.3
Latin America/Caribbean.....	13.816	146.6	130.8	3.1	2.3	8.2	12.6	-10.8
Export Air Passenger Fares	100.000	156.1	162.7	-1.3	-1.7	1.9	10.2	4.2
Europe.....	34.293	187.5	185.2	0.9	3.9	2.7	5.3	-1.2
Asia.....	29.161	127.3	137.1	-7.7	-6.5	0.4	10.9	7.7
Latin America/Caribbean.....	24.780	171.7	184.5	2.2	-1.0	3.6	16.1	7.5

¹ Relative importance figures are based on 2008 trade values.

NOTES: Data may be revised in each of the three months after original publication.

Dash = Not available

TECHNICAL NOTE

Import and Export Merchandise and Services Price Indexes -- All indexes use a modified Laspeyres formula and are not seasonally adjusted. Price indexes are reweighted annually, with a two-year lag in the weights. Published series use a base year of 2000=100 where possible. More detailed index series and additional information may be obtained at <http://www.bls.gov/mxp>, or by calling (202) 691-7101.

Merchandise Goods Classification Systems -- The merchandise price indexes are published using three classification systems. Items are classified by end use according to the Bureau of Economic Analysis Classification System, by industry according to the North American Industry Classification System (NAICS), and by product category according to the Harmonized System (HS). While classification by end use and product category are self-explanatory, some notes are in order for classifying items by industry. In the NAICS imports and exports tables, items are classified by output industry, not input industry. As an example, NAICS import index 326 (plastics and rubber products manufacturing) include outputs such as manufactured plastic rather than inputs such as petroleum. The NAICS classification structure also matches the classification system used by the PPI (Producer Price Index) to produce the NAICS primary products indexes.

Import Price Indexes -- Products have been classified by the Harmonized Tariff Schedule of the United States Annotated (TSUSA). Import prices are based on U.S. dollar prices paid by the U.S. importer. The prices are generally either "free on board" (f.o.b.) foreign port or "cost, insurance, and freight" (c.i.f.) U.S. port transaction prices, depending on the practices of the individual industry. The index for crude petroleum is calculated from data collected by the U.S. Department of Energy.

Export Price Indexes -- Products have been classified by the Harmonized Schedule B classification system of the U.S. Bureau of the Census. The prices used are generally either "free alongside ship" (f.a.s.) factory or "free on board" (f.o.b.) transaction prices, depending on the practices of the individual industry. Prices used in the grain index, excluding rice, are obtained from the U.S. Department of Agriculture.

Services Price Indexes -- Starting in September 2008 the Import Air Passenger Fares Indexes represent changes in the average revenue per passenger received by foreign carriers from U.S. residents and are calculated from data obtained from an airline consulting service. These data include tickets sold by travel agencies and travel websites. Tickets sold directly by the airlines are excluded, as are frequent flyer tickets generally. Starting in January 2008 the Export Air Passenger Fares Indexes represent changes in the average revenue per passenger received by U.S. carriers from foreign residents and are calculated from data collected directly from airlines. These data include frequent flyer tickets and those sold by consolidators. Taxes and fees are included in the Import Air Passenger Fares Index and excluded from the Export Air Passenger Fares Index. The Air Freight Indexes are calculated from data collected directly from airlines. These data exclude mail and passenger baggage. The scope of the service being priced is the movement of freight from airport to airport only, and does not include any ground transportation or port service. The Air Freight Indexes are presented using two definitions: Balance of Payments (which represent transactions between U.S. and foreign residents) and International (which represent transactions inbound to and outbound from the U.S.). Fact sheets specifying detailed information for each services industry are available at <http://www.bls.gov/mxp> under "MXP Publications."

Import Indexes by Locality of Origin -- Prices used in these indexes are a subset of the data collected for the Import Price Indexes. Beginning with January 2002, the indexes are defined by locality of origin using a nomenclature based upon the North American Industry Classification System (NAICS). Nonmanufactured goods are defined as NAICS 11 and 21 and manufactured goods are defined as NAICS 31-33.

Revision Policy -- To reflect the availability of late reports and corrections by respondents, monthly data may be revised in each of the three months after original publication. After three months, no further data revisions take place. So, for example, data released in the January release will be subject to revision in the releases for February, March, and April.

Uses of the Data -- The primary use of the indexes is to deflate trade statistics, notably the foreign trade sector of the National Income and Product Accounts constructed by the Department of Commerce. Other published indexes are useful for general market analysis. For trade in international services, Balance of Payments indexes are used for deflating National Income and Product Accounts, while International indexes are more appropriate for market analysis. Merchandise and services indexes also can be used to study U.S. competitiveness and to compute price elasticities, and the merchandise import indexes by country or region of origin are useful in terms of trade analysis.

E-Mail Subscription -- The U.S. Import and Export Price Indexes news release is available through an e-mail subscription service at (<http://www.bls.gov/bls/list.htm>).

Additional Information -- More detailed data are available on the Import/Export Price Indexes home page at (<http://www.bls.gov/mxp>). Flat Files and the FTP server are available for users requiring access to either a large volume of time series data or other related documentation. The FTP site can be accessed at <ftp://ftp.bls.gov>. For technical assistance in using the BLS Internet site, send e-mail to (labstat.helpdesk@bls.gov). For Import/Export Price Index data requests, send e-mail to (mxpinfo@bls.gov).

Information from this release will be made available to sensory impaired individuals upon request. Voice phone: 202-691-5200; Federal Relay Service: 1-800-877-8339.