



**Transmission of material in this release is embargoed until
8:30 a.m. (EDT) Tuesday, July 18, 2017**

USDL-17-1010

Technical information: (202) 691-7101 • MXPInfo@bls.gov • www.bls.gov/mxp

Media contact: (202) 691-5902 • PressOffice@bls.gov

U.S. IMPORT AND EXPORT PRICE INDEXES – JUNE 2017

U.S. import prices declined 0.2 percent in June, the U.S. Bureau of Labor Statistics reported today, after a 0.1-percent decrease in May. Lower fuel prices drove the drop in June, which more than offset higher nonfuel prices. The price index for U.S. exports fell 0.2 percent in June following a 0.5-percent decline in May.

Chart 1. One-month percent change in the Import Price Index: June 2016 – June 2017

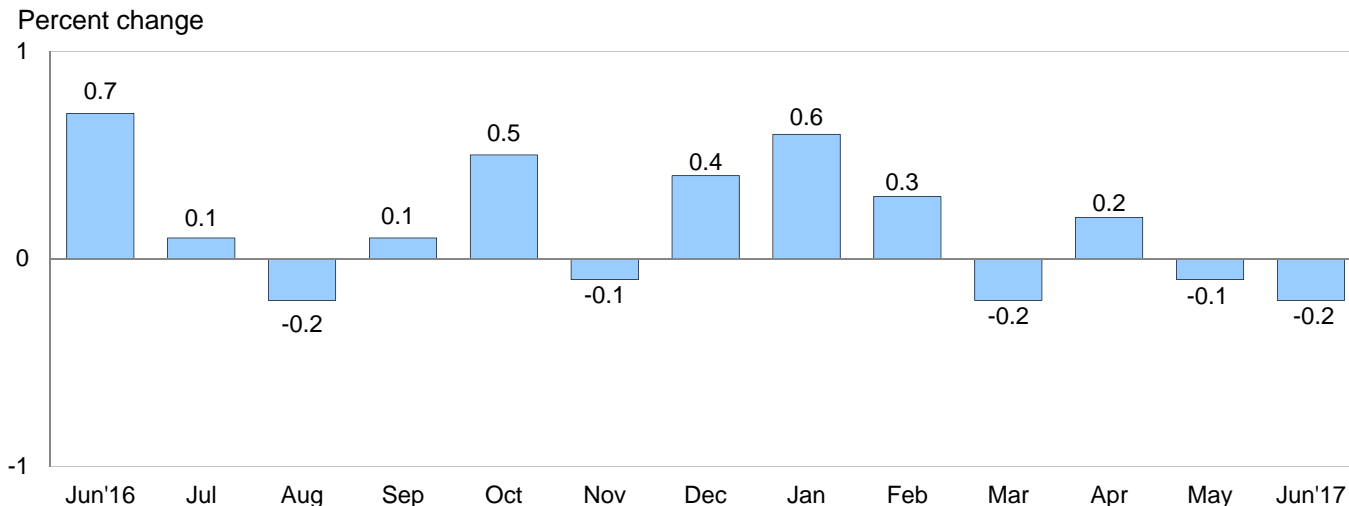
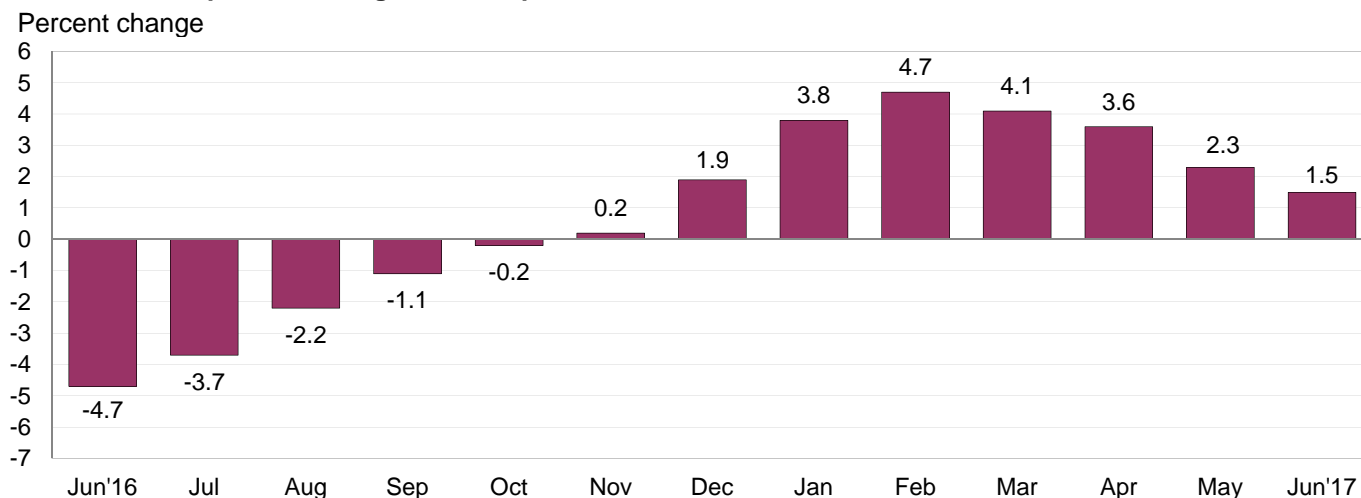


Chart 2. 12-month percent change in the Import Price Index: June 2016 – June 2017



All Imports: Import prices declined 0.2 percent in June. For the second consecutive month the decline was driven by lower fuel prices. Despite the monthly decrease in June, the price index for U.S. imports rose 1.5 percent over the past 12 months. The last over-the-year decline in import prices was a 0.2-percent decrease for the 12-month period ended in October.

Fuel Imports: The price index for fuel imports fell for a fourth consecutive month, declining 2.1 percent in June, after decreasing 4.6 percent over the previous 3 months. The main contributor to the drop was a 2.2-percent decline in petroleum prices. Natural gas prices also fell in June, decreasing 1.0 percent. Despite the recent drops, import fuel prices advanced 6.3 percent over the 12-month period ended in June. The import price index for petroleum increased 4.5 percent over the past year and natural gas prices rose 58.6 percent.

All Imports Excluding Fuel: Prices for nonfuel imports ticked up 0.1 percent in June after recording no change in May. The index for nonfuel imports has not recorded a monthly decline since a 0.1-percent dip in January. Higher import prices for foods, feeds, and beverages and capital goods more than offset lower prices for automotive vehicles, consumer goods, and nonfuel industrial supplies and materials. Prices for nonfuel imports advanced 1.0 percent over the past 12 months and the index has not recorded a 12-month decline since a 0.2-percent decrease in November. Rising prices for nonfuel industrial supplies and materials and foods, feeds, and beverages more than offset decreasing prices for capital goods and automotive vehicles over the 12-month period ended in June. Consumer goods prices recorded no change over the past year.

Table A. Percent change in Import and Export Price Indexes, selected categories

| Month | IMPORTS | | | EXPORTS | | |
|------------------------|-------------------|-------------------|-----------------|-------------------|----------------------|--------------------------|
| | All imports | Fuel imports | Nonfuel imports | All exports | Agricultural exports | Non-agricultural exports |
| 2016 | | | | | | |
| June..... | 0.7 | 10.5 | -0.2 | 0.8 | 2.5 | 0.5 |
| July..... | 0.1 | -2.1 | 0.3 | 0.2 | -0.3 | 0.3 |
| August..... | -0.2 | -3.4 | 0.0 | -0.8 | -3.4 | -0.6 |
| September..... | 0.1 | 1.3 | 0.0 | 0.3 | -1.0 | 0.5 |
| October..... | 0.5 | 6.6 | 0.0 | 0.2 | 0.5 | 0.2 |
| November..... | -0.1 | -1.1 | -0.1 | 0.1 | 0.7 | 0.0 |
| December..... | 0.4 | 5.8 | 0.0 | 0.4 | -0.2 | 0.4 |
| 2017 | | | | | | |
| January..... | 0.6 | 6.1 | -0.1 | 0.2 | 0.4 | 0.2 |
| February..... | 0.3 | 0.3 | 0.3 | 0.3 | 1.4 | 0.3 |
| March..... | -0.2 | -3.0 ^r | 0.2 | 0.1 ^r | 1.1 | 0.0 ^r |
| April..... | 0.2 | -0.4 ^r | 0.3 | 0.2 | 0.1 | 0.3 |
| May..... | -0.1 ^r | -1.2 ^r | 0.0 | -0.5 ^r | -1.6 | -0.4 ^r |
| June..... | -0.2 | -2.1 | 0.1 | -0.2 | -1.5 | 0.0 |
| June 2015 to 2016..... | -4.7 | -24.5 | -1.8 | -3.5 | -1.3 | -3.8 |
| June 2016 to 2017..... | 1.5 | 6.3 | 1.0 | 0.6 | -3.9 | 1.1 |

r Revised

Chart 3. One-month percent change in the Export Price Index: June 2016 – June 2017

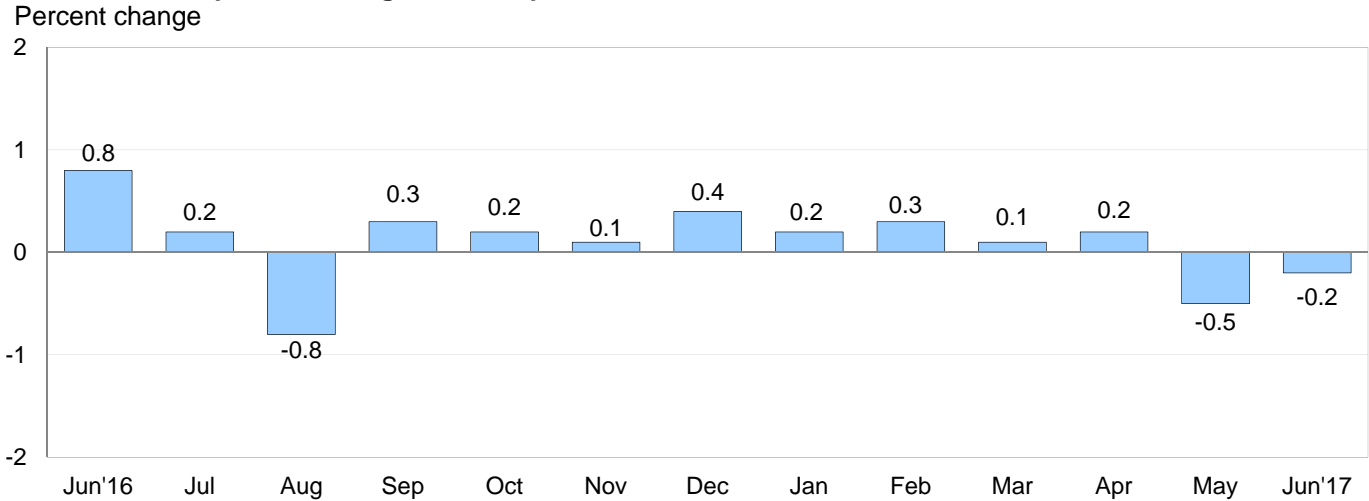
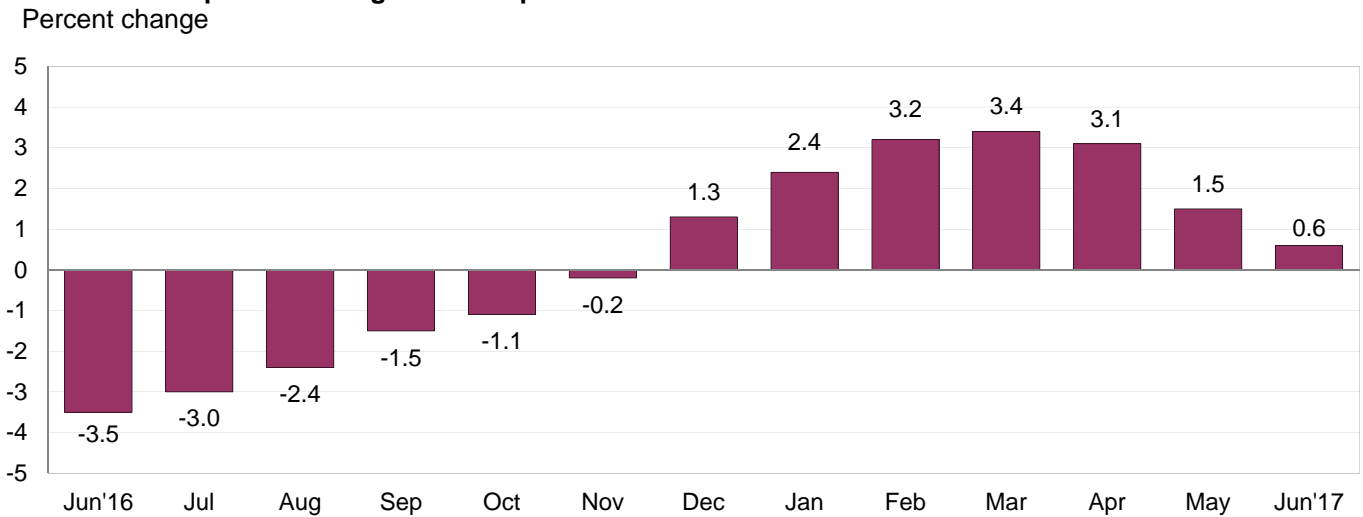


Chart 4. 12-month percent change in the Export Price Index: June 2016 – June 2017



All Exports: Prices for U.S. exports fell for a second consecutive month in June, declining 0.2 percent. Falling prices for agricultural exports drove the decrease as nonagricultural export prices recorded no change. U.S. export prices increased over the past year, advancing 0.6 percent. The price index for U.S. exports has not recorded a 12-month decline since a 0.2-percent fall in November.

Agricultural Exports: The price index for agricultural exports decreased 1.5 percent in June following a 1.6-percent drop in May. Falling prices for vegetables, soybeans, and fruit drove the June decrease, more than offsetting higher prices for meat. Prices for agricultural exports recorded a 3.9-percent decline over the 12-month period ended in June, the first over-the-year decrease since the index fell 0.3 percent for the year ended in December. Lower export prices for soybeans, fruit, and corn led the decrease in agricultural prices between June 2016 and June 2017.

All Exports Excluding Agriculture: Nonagricultural export prices recorded no change in June following a 0.4-percent decline in May. Advancing prices for nonagricultural industrial supplies and materials and consumer goods were offset by decreasing prices for automotive vehicles. Export prices for capital goods recorded no change in June. The price index for nonagricultural exports increased 1.1 percent over the past 12 months as higher prices for nonagricultural industrial supplies and materials and capital goods more than offset falling prices for consumer goods. Automotive vehicle prices recorded no change over the past year.

SELECTED JUNE HIGHLIGHTS

Import Prices

Imports by Locality of Origin: Import prices from China declined 0.1 percent in June. The price index for imports from China fell 1.0 percent over the past 12 months and has not recorded a 12-month increase since advancing 0.1 percent in October 2014. The price index for imports from Japan decreased 0.1 percent in June and increased 1.0 percent over the past year. Import prices fell 0.9 percent from Canada and decreased 0.2 percent from Mexico in June, after advancing 0.8 percent and 0.3 percent, respectively, the previous month. The price index for imports from the European Union rose 0.4 percent in June.

Nonfuel Industrial Supplies and Materials: Prices for nonfuel industrial supplies and materials decreased 0.2 percent in June, after falling 0.4 percent the previous month. A 0.8-percent drop in chemical prices and a 1.0-percent decrease in prices for building materials more than offset higher prices for gold and other precious metals.

Finished Goods: Major finished goods prices were mostly up in June. Import prices for capital goods increased 0.2 percent, after recording no change over the previous 3 months. The increase in capital goods prices was driven by a 0.4-percent advance in prices for computers, peripherals, and semiconductors. Prices for automotive vehicles fell 0.2 percent following increases of 0.1 percent in May and 0.5 percent in April. In contrast, consumer goods prices declined 0.1 percent.

Foods, Feeds, and Beverages: The price index for import foods, feeds, and beverages advanced 0.9 percent in June following a 1.0-percent rise in May and a 0.4-percent increase in April. Import prices for vegetables led the overall advance in June, rising 6.7 percent. Prices for meat imports also contributed to the overall advance in foods, feeds, and beverages prices, increasing 2.1 percent.

Transportation Services: Import air passenger fares advanced 3.7 percent in June. The increase was largely driven by a 10.9-percent rise in Asian fares and a 4.2-percent advance in European fares. Import air passenger fares declined 3.8 percent over the past 12 months. Import air freight prices fell 0.8 percent in June. Despite the decline, the index increased 11.8 percent over the past year, the largest 12-month advance since the index for import air freight rose 13.7 percent in September 2011.

Export Prices

Nonagricultural Industrial Supplies and Materials: Export prices for nonagricultural industrial supplies and materials rose 0.1 percent in June following a 1.4-percent decline in May. The June increase was driven by a 1.7-percent advance for other petroleum products and a 2.8-percent rise in nonmonetary gold prices.

Finished Goods: Price movements for major finished goods exports were mixed in June. Export consumer goods prices rose for the fourth consecutive month, advancing 0.2 percent led by a 0.4-percent increase for manufactured durable goods. The price index for export automotive vehicles fell 0.1 percent in June, after recording no change in May. Export prices for capital goods recorded no change in June.

Transportation Services: Export air passenger fares rose 4.9 percent in June, the largest monthly advance since a 7.9-percent rise in December. European fares drove the increase in June, advancing 7.7 percent. Export air passenger fares rose 2.3 percent for the year ended in June. Export air freight prices increased 0.4 percent in June and rose 4.3 percent over the past year, the largest 12-month increase since a 4.4-percent advance in April 2015.

Import and Export Price Index data for July 2017 are scheduled for release on Tuesday, August 15, 2017 at 8:30 a.m. (EDT).

Table 1. U.S. import price indexes and percent changes for selected categories of goods: June 2016 to June 2017

[2000=100, unless otherwise noted]

| Description | End Use | Relative importance May 2017 ¹ | Index | | Percent change | | | | |
|---|---------|---|----------|-----------|----------------------------------|------------------------|------------------------|-----------------------|-----------------------|
| | | | May 2017 | June 2017 | Annual June 2016 to June 2017 | Monthly | | | |
| | | | | | | Feb. 2017 to Mar. 2017 | Mar. 2017 to Apr. 2017 | Apr. 2017 to May 2017 | May 2017 to June 2017 |
| All commodities..... | | 100.000 | 122.7 | 122.5 | 1.5 | -0.2 | 0.2 | -0.1 | -0.2 |
| All imports excluding food and fuels (Dec. 2010=100)..... | | 84.716 | 98.9 | 98.9 | 0.8 | 0.2 | 0.2 | 0.0 | 0.0 |
| All imports excluding petroleum..... | | 91.596 | 111.9 | 112.0 | 1.4 | 0.1 | 0.3 | 0.0 | 0.1 |
| All imports excluding fuels (Dec. 2001=100)..... | | 90.942 | 115.9 | 116.0 | 1.0 | 0.2 | 0.3 | 0.0 | 0.1 |
| Foods, feeds, & beverages..... | 0 | 6.183 | 180.3 | 182.0 | 5.6 | -0.2 | 0.4 | 1.0 | 0.9 |
| Agricultural foods, feeds & beverages, excluding distilled beverages..... | 00 | 4.832 | 197.5 | 199.7 | 6.6 | -0.1 | 0.6 | 1.2 | 1.1 |
| Nonagricultural foods (fish, distilled beverages)..... | 01 | 1.351 | 141.7 | 142.2 | 2.6 | -0.4 | -0.5 | 0.4 | 0.4 |
| Industrial supplies & materials..... | 1 | 22.610 | 168.6 | 167.1 | 5.7 | -0.4 | 0.4 | -0.8 | -0.9 |
| Industrial supplies & materials excluding petroleum..... | | 14.395 | 148.0 | 147.8 | 6.5 | 0.9 | 1.1 | -0.5 | -0.1 |
| Industrial supplies & materials excluding fuels (Dec. 2001=100)..... | | 13.586 | 167.6 | 167.3 | 5.2 | 1.5 | 0.9 | -0.4 | -0.2 |
| Industrial supplies & materials, durable.... | | 8.441 | 158.1 | 158.1 | 6.9 | 1.6 | 1.1 | -0.4 | 0.0 |
| Industrial supplies & materials nondurable excluding petroleum..... | | 5.765 | 135.4 | 134.8 | 5.8 | 0.0 | 1.0 | -0.5 | -0.4 |
| Fuels & lubricants..... | 10 | 9.058 | 172.0 | 168.4 | 6.3 | -3.0 | -0.4 | -1.2 | -2.1 |
| Petroleum & petroleum products..... | 100 | 8.404 | 185.0 | 180.9 | 4.5 | -2.6 | -0.7 | -1.2 | -2.2 |
| Crude..... | 10000 | 5.975 | 190.0 | 183.3 | 3.3 | -3.3 | -0.6 | -0.2 | -3.5 |
| Fuels, n.e.s.-coals & gas..... | 101 | 0.500 | 104.9 | 104.1 | 52.0 | -10.2 | 6.1 | -2.4 | -0.8 |
| Gas-natural..... | 10110 | 0.377 | 83.6 | 82.8 | 58.6 | -13.6 | 8.0 | -3.1 | -1.0 |
| Paper & paper base stocks..... | 11 | 0.543 | 106.9 | 107.4 | 0.0 | -0.1 | 1.3 | 0.5 | 0.5 |
| Materials associated with nondurable supplies & materials..... | 12 | 4.636 | 154.3 | 153.5 | 2.9 | 1.4 | 0.4 | -0.3 | -0.5 |
| Selected building materials..... | 13 | 1.466 | 146.7 | 145.2 | 5.7 | 1.3 | 2.5 | 0.8 | -1.0 |
| Unfinished metals related to durable goods..... | 14 | 3.495 | 213.2 | 213.8 | 12.9 | 2.8 | 0.9 | -1.4 | 0.3 |
| Finished metals related to durable goods..... | 15 | 1.724 | 149.1 | 149.8 | 3.3 | 0.4 | 1.5 | 0.3 | 0.5 |
| Nonmetals related to durable goods..... | 16 | 1.687 | 109.0 | 108.8 | 0.1 | 0.6 | 0.1 | -0.3 | -0.2 |
| Capital goods..... | 2 | 27.433 | 88.7 | 88.9 | -0.1 | 0.0 | 0.0 | 0.0 | 0.2 |
| Electric generating equipment..... | 20 | 3.315 | 116.3 | 116.8 | 0.8 | 0.2 | -0.1 | -0.1 | 0.4 |
| Nonelectrical machinery..... | 21 | 21.554 | 81.3 | 81.4 | -0.1 | 0.1 | 0.2 | 0.0 | 0.1 |
| Transportation equipment excluding motor vehicles (Dec. 2001=100)..... | 22 | 2.565 | 134.6 | 134.5 | -1.5 | -0.1 | -1.5 | 0.1 | -0.1 |
| Automotive vehicles, parts & engines..... | 3 | 16.340 | 110.7 | 110.5 | -0.1 | 0.0 | 0.5 | 0.1 | -0.2 |
| Consumer goods, excluding automobiles..... | 4 | 27.434 | 107.0 | 106.9 | 0.0 | -0.2 | 0.1 | 0.0 | -0.1 |
| Nondurables, manufactured..... | 40 | 13.482 | 121.7 | 121.7 | 1.6 | 0.1 | 0.2 | 0.0 | 0.0 |
| Durables, manufactured..... | 41 | 12.620 | 93.0 | 93.0 | -1.3 | -0.1 | -0.1 | -0.1 | 0.0 |
| Nonmanufactured consumer goods..... | 42 | 1.332 | 116.4 | 115.0 | -3.4 | -3.0 | 1.2 | 0.1 | -1.2 |

¹ Relative importance figures are based on 2015 trade values.

NOTES: Data may be revised in each of the 3 months after original publication.

Dash = Not available

Table 2. U.S. export price indexes and percent changes for selected categories of goods: June 2016 to June 2017

[2000=100, unless otherwise noted]

| Description | End Use | Relative importance May 2017 ¹ | Index | | Percent change | | | | |
|--|---------|---|----------|-----------|----------------------------------|------------------------|------------------------|-----------------------|-----------------------|
| | | | May 2017 | June 2017 | Annual June 2016 to June 2017 | Monthly | | | |
| | | | | | | Feb. 2017 to Mar. 2017 | Mar. 2017 to Apr. 2017 | Apr. 2017 to May 2017 | May 2017 to June 2017 |
| All commodities..... | | 100.000 | 121.8 | 121.6 | 0.6 | 0.1 | 0.2 | -0.5 | -0.2 |
| Agricultural commodities..... | | 9.453 | 177.5 | 174.8 | -3.9 | 1.1 | 0.1 | -1.6 | -1.5 |
| All exports excluding food and fuels (Dec. 2010=100)..... | | 83.517 | 98.7 | 98.7 | 0.4 | 0.3 | -0.1 | -0.1 | 0.0 |
| Nonagricultural commodities..... | | 90.547 | 117.6 | 117.6 | 1.1 | 0.0 | 0.3 | -0.4 | 0.0 |
| Foods, feeds, & beverages..... | 0 | 8.778 | 179.2 | 176.3 | -4.2 | 1.2 | 0.5 | -2.0 | -1.6 |
| Agricultural foods, feeds & beverages, excluding distilled beverages..... | 00 | 8.162 | 178.5 | 175.8 | -4.8 | 1.0 | 0.3 | -1.9 | -1.5 |
| Nonagricultural foods (fish, distilled beverages)..... | 01 | 0.616 | 197.3 | 191.0 | 3.3 | 3.2 | 3.4 | -3.5 | -3.2 |
| Industrial supplies & materials..... | 1 | 29.587 | 145.6 | 145.6 | 3.4 | -0.1 | 0.3 | -1.3 | 0.0 |
| Industrial supplies & materials, durable.... | | 10.667 | 158.1 | 157.6 | 3.9 | 1.2 | -0.2 | -0.6 | -0.3 |
| Industrial supplies & materials, nondurable..... | | 18.962 | 139.9 | 140.1 | 3.2 | -0.8 | 0.6 | -1.7 | 0.1 |
| Agricultural industrial supplies & materials..... | 10 | 1.292 | 176.7 | 174.3 | 2.5 | 1.3 | -1.2 | 0.6 | -1.4 |
| Nonagricultural industrial supplies & materials..... | | 28.296 | 144.6 | 144.7 | 3.5 | -0.1 | 0.4 | -1.4 | 0.1 |
| Fuels & lubricants..... | 11 | 7.747 | 161.4 | 161.6 | 9.3 | -3.0 | 3.5 | -2.9 | 0.1 |
| Nonagricultural supplies & materials excluding fuels & building materials..... | 12 | 19.509 | 150.1 | 150.2 | 1.4 | 0.9 | -0.8 | -0.9 | 0.1 |
| Selected building materials..... | 13 | 1.040 | 120.2 | 119.9 | 3.9 | 1.6 | 0.4 | 0.5 | -0.2 |
| Capital goods..... | 2 | 38.422 | 107.7 | 107.7 | 0.6 | 0.2 | 0.1 | 0.1 | 0.0 |
| Electrical generating equipment..... | 20 | 3.979 | 112.8 | 112.6 | 0.1 | 0.6 | 0.1 | 0.0 | -0.2 |
| Nonelectrical machinery..... | 21 | 25.141 | 93.8 | 93.8 | -0.4 | 0.1 | 0.1 | 0.0 | 0.0 |
| Transportation equipment excluding motor vehicles (Dec. 2001=100)..... | 22 | 9.302 | 170.3 | 170.5 | 3.7 | 0.1 | 0.2 | 0.2 | 0.1 |
| Automotive vehicles, parts & engines..... | 3 | 10.380 | 113.3 | 113.2 | 0.0 | 0.0 | 0.2 | 0.0 | -0.1 |
| Consumer goods, excluding automotives..... | 4 | 12.833 | 108.3 | 108.5 | -1.5 | 0.2 | 0.3 | 0.1 | 0.2 |
| Nondurables, manufactured..... | 40 | 6.214 | 104.2 | 104.3 | -1.6 | 0.0 | 0.7 | 0.1 | 0.1 |
| Durables, manufactured..... | 41 | 5.211 | 106.9 | 107.3 | -0.5 | 0.1 | 0.0 | 0.1 | 0.4 |

¹ Relative importance figures are based on 2015 trade values.

NOTES: Data may be revised in each of the 3 months after original publication.

Dash = Not available

Table 3. U.S. import price indexes and percent changes for selected industries: June 2016 to June 2017
 [December 2005=100, unless otherwise noted]

| Description | NAICS | Relative importance May 2017 ¹ | Index | | Percent change | | | | |
|---|-------|---|-------------|--------------|---|---------------------------------|---------------------------------|--------------------------------|--------------------------------|
| | | | May 2017 | June 2017 | Annual June 2016 to June 2017 | Monthly | | | |
| | | | | | | Feb. 2017 to Mar. 2017 | Mar. 2017 to Apr. 2017 | Apr. 2017 to May 2017 | May 2017 to June 2017 |
| Nonmanufacturing..... | | 8.675 | 95.5 | 93.7 | 8.2 | -3.7 | 0.1 | 0.2 | -1.9 |
| Agriculture, forestry, fishing and hunting..... | 11 | 2.068 | 185.4 | 187.2 | 14.3 | -2.8 | 1.2 | 2.0 | 1.0 |
| Crop production..... | 111 | 1.650 | 197.9 | 200.8 | 15.7 | -2.9 | 2.1 | 2.1 | 1.5 |
| Animal production (Dec. 2014=100)..... | 112 | 0.212 | 81.2 | 82.5 | 2.6 | -1.0 | -1.1 | 3.4 | 1.6 |
| Mining..... | 21 | 6.607 | 84.9 | 82.5 | 6.3 | -3.9 | -0.4 | -0.2 | -2.8 |
| Oil and gas extraction..... | 211 | 6.328 | 84.3 | 81.5 | 5.6 | -4.3 | -0.1 | -0.6 | -3.3 |
| Mining (except oil and gas) (Dec. 2006=100)..... | 212 | 0.280 | 110.2 | 118.9 | 25.2 | 2.3 | -3.7 | 6.3 | 7.9 |
| Manufacturing..... | | 91.041 | 109.9 | 109.9 | 0.8 | 0.3 | 0.2 | -0.1 | 0.0 |
| Manufacturing, part 1..... | 31 | 11.956 | 124.2 | 124.5 | 0.5 | 0.1 | 0.1 | 0.2 | 0.2 |
| Food manufacturing..... | 311 | 3.501 | 156.0 | 156.9 | 2.3 | 0.3 | 0.2 | 0.7 | 0.6 |
| Beverage and tobacco product manufacturing..... | 312 | 1.062 | 118.3 | 118.6 | -0.2 | 0.2 | -0.1 | 0.1 | 0.3 |
| Textile mills (Dec. 2011=100)..... | 313 | 0.399 | 98.1 | 98.2 | -0.5 | 0.2 | 0.2 | -0.3 | 0.1 |
| Textile product mills..... | 314 | 0.933 | 108.5 | 108.6 | -0.1 | 0.4 | 0.0 | 0.0 | 0.1 |
| Apparel manufacturing..... | 315 | 4.208 | 110.9 | 111.0 | -0.3 | -0.1 | 0.0 | -0.2 | 0.1 |
| Leather and allied product manufacturing..... | 316 | 1.852 | 123.1 | 123.2 | -0.1 | -0.1 | 0.0 | 0.2 | 0.1 |
| Manufacturing, part 2..... | 32 | 17.560 | 120.2 | 120.1 | 3.3 | 0.7 | 0.3 | -0.5 | -0.1 |
| Wood product manufacturing..... | 321 | 0.912 | 128.9 | 126.6 | 9.5 | 1.9 | 3.9 | 1.3 | -1.8 |
| Paper manufacturing..... | 322 | 1.024 | 104.7 | 105.0 | -0.6 | -0.1 | 0.3 | 0.2 | 0.3 |
| Printing and related support activities (Dec. 2016=100)..... | 323 | 0.223 | 100.1 | 100.1 | - | 0.0 | 0.0 | 0.0 | 0.0 |
| Petroleum and coal products manufacturing..... | 324 | 2.197 | 80.5 | 81.6 | 6.8 | 0.1 | -0.7 | -3.2 | 1.4 |
| Chemical manufacturing..... | 325 | 9.957 | 135.9 | 135.5 | 3.6 | 0.8 | 0.4 | -0.2 | -0.3 |
| Plastics and rubber products manufacturing..... | 326 | 2.238 | 117.9 | 117.8 | 0.5 | 0.8 | 0.3 | -0.1 | -0.1 |
| Nonmetallic mineral product manufacturing..... | 327 | 1.010 | 128.4 | 127.6 | -1.6 | -0.2 | 0.0 | -0.1 | -0.6 |
| Manufacturing, part 3..... | 33 | 61.524 | 103.5 | 103.6 | 0.3 | 0.1 | 0.2 | -0.1 | 0.1 |
| Primary metal manufacturing..... | 331 | 4.171 | 141.0 | 141.1 | 11.8 | 2.4 | 0.6 | -1.2 | 0.1 |
| Fabricated metal product manufacturing..... | 332 | 3.094 | 122.3 | 122.6 | 0.4 | 0.1 | 0.8 | 0.0 | 0.2 |
| Machinery manufacturing..... | 333 | 7.082 | 116.1 | 116.4 | -0.1 | 0.1 | 0.2 | -0.2 | 0.3 |
| Computer and electronic product manufacturing..... | 334 | 17.621 | 75.8 | 75.9 | -0.8 | 0.0 | 0.0 | 0.0 | 0.1 |
| Electrical equipment, appliance, and component manufacturing..... | 335 | 4.916 | 114.5 | 114.5 | 0.0 | -0.2 | 0.4 | -0.1 | 0.0 |
| Transportation equipment manufacturing..... | 336 | 17.583 | 109.7 | 109.5 | -0.3 | 0.0 | 0.2 | 0.1 | -0.2 |
| Furniture and related product manufacturing..... | 337 | 1.735 | 115.3 | 115.3 | 0.0 | 0.0 | 0.1 | 0.0 | 0.0 |
| Miscellaneous manufacturing..... | 339 | 5.323 | 117.4 | 117.5 | -1.9 | 0.1 | -0.2 | 0.0 | 0.1 |

¹ Relative importance figures are based on 2015 trade values.

NOTES: Data may be revised in each of the 3 months after original publication.

Dash = Not available

Table 4. U.S. export price indexes and percent changes for selected industries: June 2016 to June 2017
 [December 2005=100, unless otherwise noted]

| Description | NAICS | Relative importance May 2017 ¹ | Index | | Percent change | | | | |
|---|-------|---|----------|-----------|----------------------------------|------------------------|------------------------|-----------------------|-----------------------|
| | | | May 2017 | June 2017 | Annual June 2016 to June 2017 | Monthly | | | |
| | | | | | | Feb. 2017 to Mar. 2017 | Mar. 2017 to Apr. 2017 | Apr. 2017 to May 2017 | May 2017 to June 2017 |
| Nonmanufacturing..... | | 7.451 | 132.7 | 129.0 | 1.8 | -1.9 | 1.3 | 0.0 | -2.8 |
| Agriculture, forestry, fishing and hunting..... | 11 | 4.601 | 154.2 | 148.5 | -8.4 | 1.4 | -0.1 | -2.8 | -3.7 |
| Crop production..... | 111 | 4.238 | 160.0 | 154.4 | -9.2 | 1.1 | -0.5 | -2.7 | -3.5 |
| Mining..... | 21 | 2.850 | 82.0 | 80.9 | 23.3 | -7.4 | 3.9 | 4.9 | -1.3 |
| Mining (except oil and gas)..... | 212 | 1.243 | 102.6 | 101.7 | 32.1 | -2.7 | -3.9 | 3.2 | -0.9 |
| Manufacturing..... | | 91.051 | 111.9 | 112.0 | 0.6 | 0.2 | 0.3 | -0.4 | 0.1 |
| Manufacturing, part 1..... | 31 | 7.111 | 137.7 | 137.8 | 1.7 | 0.9 | -0.1 | 0.4 | 0.1 |
| Food manufacturing..... | 311 | 4.780 | 156.0 | 156.5 | 2.7 | 0.8 | 0.3 | 0.5 | 0.3 |
| Beverage and tobacco product manufacturing..... | 312 | 0.706 | 111.5 | 110.6 | 0.8 | 2.9 | -1.8 | 1.2 | -0.8 |
| Textile mills (Dec. 2016=100)..... | 313 | 0.676 | 101.4 | 101.2 | - | 0.3 | -0.3 | -0.1 | -0.2 |
| Leather and allied product manufacturing (Dec. 2016=100)..... | 316 | 0.285 | 98.7 | 98.5 | - | -0.2 | -0.2 | -1.2 | -0.2 |
| Manufacturing, part 2..... | 32 | 23.671 | 105.8 | 106.0 | -0.2 | -0.1 | 0.7 | -1.9 | 0.2 |
| Paper manufacturing..... | 322 | 1.616 | 115.7 | 115.9 | -4.1 | -2.5 | 2.3 | -1.3 | 0.2 |
| Petroleum and coal products manufacturing..... | 324 | 4.988 | 89.7 | 90.4 | 3.8 | -1.8 | 3.3 | -6.6 | 0.8 |
| Chemical manufacturing..... | 325 | 13.128 | 112.7 | 112.7 | -1.1 | 0.5 | -0.2 | -0.7 | 0.0 |
| Plastics and rubber products manufacturing..... | 326 | 2.312 | 114.6 | 114.4 | -0.8 | 0.3 | -0.5 | 0.3 | -0.2 |
| Nonmetallic mineral product manufacturing..... | 327 | 0.848 | 113.4 | 113.6 | 1.2 | 1.1 | -0.5 | 0.2 | 0.2 |
| Manufacturing, part 3..... | 33 | 60.268 | 111.9 | 111.9 | 0.8 | 0.2 | 0.2 | 0.1 | 0.0 |
| Primary metal manufacturing..... | 331 | 4.036 | 137.4 | 137.5 | 4.6 | 1.2 | 0.7 | -0.3 | 0.1 |
| Fabricated metal product manufacturing..... | 332 | 3.333 | 138.2 | 138.1 | 6.1 | 0.0 | 0.0 | 0.6 | -0.1 |
| Machinery manufacturing..... | 333 | 10.298 | 125.4 | 125.4 | -0.6 | 0.0 | 0.2 | 0.0 | 0.0 |
| Computer and electronic product manufacturing..... | 334 | 14.215 | 82.6 | 82.6 | -1.3 | 0.0 | 0.1 | 0.0 | 0.0 |
| Electrical equipment, appliance, and component manufacturing..... | 335 | 3.997 | 113.1 | 113.1 | 0.4 | 0.5 | 0.2 | 0.0 | 0.0 |
| Transportation equipment manufacturing..... | 336 | 18.562 | 124.3 | 124.4 | 1.8 | 0.1 | 0.1 | 0.1 | 0.1 |
| Furniture and related product manufacturing (Dec. 2011=100)..... | 337 | 0.457 | 117.5 | 117.5 | 2.2 | -0.2 | 0.1 | 0.0 | 0.0 |
| Miscellaneous manufacturing..... | 339 | 5.370 | 118.9 | 119.1 | -0.5 | 0.3 | 0.1 | 0.0 | 0.2 |

¹ Relative importance figures are based on 2015 trade values.

NOTES: Data may be revised in each of the 3 months after original publication.

Dash = Not available

Table 5. U.S. import price indexes and percent changes for selected categories of goods: June 2016 to June 2017

[2000=100, unless otherwise noted]

| Description | Harmonized system | Relative importance May 2017 ¹ | Index | | Percent change | | | | |
|---|-------------------|---|----------|-----------|------------------------|------------------------|------------------------|-----------------------|-----------------------|
| | | | May 2017 | June 2017 | Annual | Monthly | | | |
| | | | | | June 2016 to June 2017 | Feb. 2017 to Mar. 2017 | Mar. 2017 to Apr. 2017 | Apr. 2017 to May 2017 | May 2017 to June 2017 |
| Live animals; animal products..... | I | 1.518 | 196.0 | 198.7 | 4.9 | -0.1 | 0.3 | 1.9 | 1.4 |
| Meat and edible meat offal..... | 02 | 0.455 | 250.1 | 254.8 | 8.0 | 1.1 | 1.9 | 2.5 | 1.9 |
| Fish and crustaceans, molluscs and other aquatic invertebrates..... | 03 | 0.755 | 143.9 | 144.3 | 3.2 | -1.2 | -0.8 | 0.7 | 0.3 |
| Vegetable products..... | II | 2.095 | 219.7 | 221.8 | 19.3 | -2.6 | 2.5 | 1.5 | 1.0 |
| Edible vegetables, roots, and tubers..... | 07 | 0.374 | 425.9 | 469.8 | 15.5 | -2.4 | 2.9 | 1.0 | 10.3 |
| Edible fruit and nuts; peel of citrus fruit or melons..... | 08 | 0.900 | 133.3 | 133.5 | 62.6 | -0.6 | 4.0 | 3.7 | 0.2 |
| Coffee, tea, mate and spices..... | 09 | 0.358 | 229.9 | 226.2 | -1.4 | -0.9 | -1.2 | -1.1 | -1.6 |
| Animal or vegetable fats and oils (Dec. 2009=100)..... | III | 0.302 | 115.4 | 116.4 | 9.1 | -4.9 | -0.4 | 1.7 | 0.9 |
| Prepared foodstuffs, beverages, and tobacco..... | IV | 2.686 | 160.0 | 160.7 | -1.8 | 0.8 | -0.3 | 0.0 | 0.4 |
| Sugars and sugar confectionary (Dec. 2012=100)..... | 17 | 0.187 | 86.9 | 87.6 | 1.2 | -0.2 | 0.7 | 0.5 | 0.8 |
| Cocoa and cocoa preparations (Dec. 2009=100)..... | 18 | 0.189 | 92.7 | 96.4 | -16.2 | 0.8 | -4.6 | -1.7 | 4.0 |
| Preparations of vegetables, fruit, nuts, or other parts of plants..... | 20 | 0.355 | 164.8 | 164.6 | 6.0 | 4.2 | -0.2 | 0.1 | -0.1 |
| Beverages, spirits, and vinegar..... | 22 | 1.002 | 127.9 | 128.2 | -0.4 | 0.2 | -0.1 | 0.0 | 0.2 |
| Mineral products..... | V | 8.959 | 171.8 | 168.7 | 6.8 | -2.8 | -0.2 | -1.0 | -1.8 |
| Mineral fuels, oils and residuals, bituminous substances and mineral waxes..... | 27 | 8.712 | 169.5 | 165.9 | 6.7 | -2.9 | -0.1 | -1.2 | -2.1 |
| Products of the chemical or allied industries..... | VI | 9.367 | 152.1 | 151.8 | 3.4 | 0.5 | 0.0 | -0.1 | -0.2 |
| Inorganic chemicals..... | 28 | 0.568 | 285.1 | 276.5 | 5.9 | 5.8 | 1.2 | -0.3 | -3.0 |
| Organic chemicals..... | 29 | 2.410 | 124.5 | 124.1 | 3.2 | 1.2 | 0.2 | 0.0 | -0.3 |
| Pharmaceutical products..... | 30 | 4.354 | 148.9 | 148.9 | 4.6 | -0.4 | -0.1 | 0.0 | 0.0 |
| Fertilizers (Dec. 2009=100)..... | 31 | 0.258 | 73.0 | 72.7 | -6.0 | -1.1 | -2.9 | -4.1 | -0.4 |
| Tanning extracts; dye, pigments, varnish, paints & putty (Dec. 2011=100)..... | 32 | 0.192 | 107.0 | 108.6 | 10.4 | 0.0 | 5.0 | 0.1 | 1.5 |
| Essential oils and resinoids (Dec. 2016=100)..... | 33 | 0.542 | 99.2 | 99.3 | - | -0.2 | -1.0 | 0.2 | 0.1 |
| Miscellaneous chemical products..... | 38 | 0.682 | 103.4 | 103.9 | 3.1 | 0.7 | -0.2 | -0.5 | 0.5 |
| Plastics and articles thereof; rubber and articles thereof..... | VII | 3.460 | 139.9 | 139.2 | 1.9 | 0.6 | 0.2 | 0.0 | -0.5 |
| Plastics and articles thereof..... | 39 | 2.183 | 140.8 | 140.4 | 0.2 | 0.6 | 0.4 | 0.1 | -0.3 |
| Rubber and articles thereof..... | 40 | 1.277 | 139.6 | 138.5 | 5.2 | 0.4 | 0.1 | -0.1 | -0.8 |
| Raw hides, skins, leather, furskins, travel goods, etc..... | VIII | 0.687 | 123.6 | 123.6 | 0.1 | -0.1 | -0.2 | 0.6 | 0.0 |
| Articles of leather; travel goods, bags, etc. of various materials..... | 42 | 0.656 | 128.8 | 128.8 | -0.1 | -0.1 | -0.2 | 0.5 | 0.0 |
| Wood, wood charcoal, cork, straw, basketware and wickerwork..... | IX | 0.945 | 156.5 | 154.4 | 9.8 | 1.9 | 3.9 | 1.2 | -1.3 |
| Wood and articles of wood; wood charcoal (Dec. 2014=100)..... | 44 | 0.920 | 107.9 | 106.4 | 10.1 | 2.0 | 3.9 | 1.3 | -1.4 |
| Woodpulp, recovered paper, and paper products..... | X | 1.091 | 110.3 | 110.6 | 0.6 | 0.0 | 0.3 | 0.3 | 0.3 |
| Paper and paperboard; articles of paper pulp, paper or paperboard..... | 48 | 0.721 | 103.0 | 102.9 | -1.5 | 0.0 | -0.6 | -0.1 | -0.1 |
| Printed matter (Dec. 2015=100)..... | 49 | 0.221 | 106.1 | 106.1 | 5.8 | 0.0 | 0.0 | 0.1 | 0.0 |
| Textile and textile articles..... | XI | 5.359 | 113.1 | 113.1 | -0.1 | 0.1 | 0.0 | -0.1 | 0.0 |

See footnotes at end of table.

Table 5. U.S. import price indexes and percent changes for selected categories of goods: June 2016 to June 2017 — Continued

[2000=100, unless otherwise noted]

| Description | Harmonized system | Relative importance May 2017 ¹ | Index | | Percent change | | | | |
|--|-------------------|---|----------|-----------|----------------------------------|------------------------|------------------------|-----------------------|-----------------------|
| | | | May 2017 | June 2017 | Annual June 2016 to June 2017 | Monthly | | | |
| | | | | | | Feb. 2017 to Mar. 2017 | Mar. 2017 to Apr. 2017 | Apr. 2017 to May 2017 | May 2017 to June 2017 |
| Articles of apparel and clothing accessories, knitted or crocheted..... | 61 | 2.199 | 103.5 | 103.6 | 0.2 | 0.0 | 0.0 | -0.3 | 0.1 |
| Articles of apparel and clothing accessories, not knitted or crocheted..... | 62 | 1.838 | 119.0 | 118.9 | -0.8 | -0.1 | 0.0 | 0.0 | -0.1 |
| Made-up or worn textile articles..... | 63 | 0.654 | 103.8 | 103.8 | 0.9 | 0.4 | 0.0 | 0.1 | 0.0 |
| Headgear, umbrellas, artificial flowers, etc..... | XII | 1.525 | 122.3 | 122.3 | -0.5 | -0.1 | 0.0 | 0.0 | 0.0 |
| Footwear and parts of such articles..... | 64 | 1.291 | 121.4 | 121.4 | -0.5 | -0.1 | 0.0 | 0.0 | 0.0 |
| Stone, plaster, cement, asbestos, ceramics, glass etc..... | XIII | 0.942 | 129.8 | 129.1 | -2.0 | -0.2 | 0.0 | -0.2 | -0.5 |
| Articles of stone, plaster, cement, asbestos, or mica (Dec. 2015=100)..... | 68 | 0.324 | 95.7 | 94.2 | -5.3 | -0.3 | -0.1 | -0.5 | -1.6 |
| Ceramic products..... | 69 | 0.273 | 136.7 | 136.6 | -0.4 | -0.3 | 0.1 | -0.1 | -0.1 |
| Glass and glassware..... | 70 | 0.345 | 130.0 | 129.9 | -0.1 | 0.1 | 0.1 | 0.2 | -0.1 |
| Pearls, stones, precious metals, imitation jewelry, and coins..... | XIV | 2.796 | 168.5 | 170.6 | 1.8 | 1.3 | 0.4 | -1.2 | 1.2 |
| Base metals and articles of base metals. ... | XV | 5.541 | 166.5 | 166.0 | 7.0 | 1.4 | 0.8 | -0.5 | -0.3 |
| Iron and steel..... | 72 | 1.367 | 197.8 | 195.5 | 15.3 | 3.0 | 1.6 | -0.7 | -1.2 |
| Articles of iron or steel..... | 73 | 1.664 | 141.1 | 142.0 | 2.9 | 0.3 | 1.2 | 0.4 | 0.6 |
| Copper and articles thereof..... | 74 | 0.378 | 266.3 | 266.2 | 10.4 | 0.9 | -1.7 | -1.8 | 0.0 |
| Aluminum and articles thereof..... | 76 | 0.812 | 129.4 | 128.4 | 6.2 | 3.0 | 0.9 | -0.4 | -0.8 |
| Tools, implements, cutlery, spoons and forks, of base metal; parts thereof..... | 82 | 0.435 | 122.7 | 122.4 | 0.1 | 0.1 | 0.1 | -0.2 | -0.2 |
| Miscellaneous articles of base metal..... | 83 | 0.522 | 136.6 | 136.5 | -0.1 | 0.1 | 0.8 | 0.1 | -0.1 |
| Machinery, electrical equipment, TV image and sound recorders, parts, etc..... | XVI | 29.837 | 80.4 | 80.4 | -0.5 | 0.0 | 0.0 | 0.0 | 0.0 |
| Machinery and mechanical appliances; parts thereof..... | 84 | 14.824 | 85.7 | 85.8 | 0.0 | 0.1 | 0.1 | 0.0 | 0.1 |
| Electrical machinery and equip, sound and TV recorders & reproducers, parts..... | 85 | 15.014 | 75.3 | 75.3 | -0.9 | -0.1 | -0.1 | 0.0 | 0.0 |
| Vehicles, aircraft, vessels and associated transport equipment..... | XVII | 14.669 | 114.3 | 114.2 | 0.0 | 0.0 | 0.4 | 0.0 | -0.1 |
| Motor vehicles and their parts..... | 87 | 13.201 | 113.2 | 113.2 | 0.3 | 0.0 | 0.5 | 0.0 | 0.0 |
| Aircraft, spacecraft, and parts thereof (Dec. 2002=100)..... | 88 | 1.336 | 116.1 | 115.8 | -2.7 | -0.2 | -2.1 | 0.0 | -0.3 |
| Optical, photo, measuring, medical & musical instruments; & timepieces..... | XVIII | 3.852 | 101.1 | 101.4 | -1.9 | -0.2 | 0.2 | -0.2 | 0.3 |
| Optical, photographic, measuring and medical instruments..... | 90 | 3.524 | 97.8 | 98.0 | -2.3 | -0.2 | 0.2 | -0.2 | 0.2 |
| Clocks and watches and parts thereof..... | 91 | 0.268 | 142.0 | 142.5 | 0.7 | -0.1 | 0.2 | 0.0 | 0.4 |
| Miscellaneous manufactured articles..... | XX | 4.292 | 110.9 | 110.9 | -1.2 | 0.1 | -0.4 | 0.0 | 0.0 |
| Furniture & stuffed furnishings; lamps & lighting fittings, nesoi; prefab bldgs..... | 94 | 2.653 | 116.5 | 116.4 | -0.3 | 0.0 | 0.0 | 0.1 | -0.1 |
| Toys, games and sports equipment; parts and accessories thereof..... | 95 | 1.363 | 101.4 | 101.4 | -2.1 | 0.0 | -1.3 | 0.0 | 0.0 |
| Miscellaneous manufactured articles..... | 96 | 0.276 | 129.9 | 129.7 | -4.3 | 0.1 | 0.0 | 0.1 | -0.2 |

¹ Relative importance figures are based on 2015 trade values.

NOTES: Data may be revised in each of the 3 months after original publication.

Dash = Not available

Table 6. U.S. export price indexes and percent changes for selected categories of goods: June 2016 to June 2017

[2000=100, unless otherwise noted]

| Description | Harmoni- zied system | Relative importance May 2017 ¹ | Index | | Percent change | | | | |
|--|----------------------------|--|-------------|--------------|---------------------------------|---------------------------------|---------------------------------|--------------------------------|--------------------------------|
| | | | May 2017 | June 2017 | Annual | Monthly | | | |
| | | | | | June 2016 to June 2017 | Feb. 2017 to Mar. 2017 | Mar. 2017 to Apr. 2017 | Apr. 2017 to May 2017 | May 2017 to June 2017 |
| Live animals; animal products..... | I | 1.895 | 203.4 | 206.6 | 10.9 | 2.7 | 1.0 | -0.3 | 1.6 |
| Meat & edible meat offal (Dec. 2006=100)... | 02 | 1.112 | 162.1 | 166.2 | 11.2 | 5.3 | 0.8 | 1.6 | 2.5 |
| Fish and crustaceans, mollusks and aquatic invertebrates (Dec. 2016=100)..... | 03 | 0.399 | 106.8 | 102.1 | - | 3.3 | 6.0 | -6.7 | -4.4 |
| Vegetable products..... | II | 4.301 | 194.5 | 187.1 | -10.0 | 1.3 | 0.5 | -4.9 | -3.8 |
| Edible fruit and nuts; peel of citrus fruit or melons..... | 08 | 0.823 | 137.6 | 133.4 | -15.7 | 2.1 | -1.1 | -3.1 | -3.1 |
| Cereals..... | 10 | 1.203 | 175.2 | 177.4 | -7.8 | 2.3 | -4.7 | 0.9 | 1.3 |
| Oilseeds and misc. grains, seeds, fruits, plants, straw and fodder..... | 12 | 1.629 | 196.1 | 190.7 | -13.4 | 1.6 | -8.7 | 2.0 | -2.8 |
| Prepared foodstuffs, beverages, and tobacco..... | IV | 3.102 | 148.7 | 147.3 | -1.8 | 0.6 | 0.4 | 0.5 | -0.9 |
| Preparations of vegetables, fruit, nuts or other parts of plants (Dec. 2009=100).... | 20 | 0.385 | 117.0 | 117.0 | -1.6 | 0.1 | 0.2 | 0.1 | 0.0 |
| Beverages, spirits, and vinegar (Dec. 2008=100)..... | 22 | 0.555 | 112.0 | 111.0 | -0.1 | 1.4 | 1.0 | -0.1 | -0.9 |
| Residues and waste from the food industries; prepared animal feed..... | 23 | 0.723 | 196.3 | 191.9 | -8.2 | -1.0 | -1.1 | 0.7 | -2.2 |
| Mineral products..... | V | 8.058 | 191.7 | 191.7 | 14.4 | -2.9 | 3.2 | -2.3 | 0.0 |
| Ores, slag and ash (Dec. 2012=100)..... | 26 | 0.544 | 91.4 | 89.5 | 17.9 | -0.7 | 0.6 | -2.1 | -2.1 |
| Mineral fuels, oils and residuals, bituminous substances and mineral waxes..... | 27 | 7.320 | 183.0 | 183.3 | 14.5 | -3.2 | 3.5 | -2.5 | 0.2 |
| Products of the chemical or allied industries..... | VI | 10.778 | 133.1 | 132.7 | -2.6 | 0.4 | -0.7 | -0.5 | -0.3 |
| Inorganic chemicals..... | 28 | 0.808 | 168.3 | 160.3 | -7.7 | -0.3 | -5.1 | -0.2 | -4.8 |
| Organic chemicals..... | 29 | 2.495 | 129.3 | 130.0 | -2.3 | 1.6 | -2.4 | -2.1 | 0.5 |
| Pharmaceutical products..... | 30 | 3.171 | 104.5 | 104.7 | -2.4 | 0.0 | 1.1 | 0.2 | 0.2 |
| Fertilizers (Dec. 2016=100)..... | 31 | 0.254 | 109.8 | 107.7 | - | 3.8 | 4.1 | 1.9 | -1.9 |
| Tanning or dyeing extracts, dyes, paints varnish, putty, & inks (Dec. 2015=100).... | 32 | 0.527 | 98.6 | 100.3 | 1.9 | 0.2 | 0.3 | 0.4 | 1.7 |
| Essential oils and resinoids; perfumery cosmetic or toilet preparations..... | 33 | 0.825 | 133.4 | 132.7 | -1.3 | 0.1 | 1.1 | -0.1 | -0.5 |
| Soap; lubricants; waxes, polishing or scouring products; candles, pastes..... | 34 | 0.505 | 113.5 | 112.5 | -3.4 | -0.6 | -1.1 | -1.1 | -0.9 |
| Miscellaneous chemical products..... | 38 | 1.758 | 144.4 | 143.5 | -3.1 | -0.2 | -0.4 | -0.3 | -0.6 |
| Plastics and articles thereof; rubber and articles thereof..... | VII | 5.133 | 137.8 | 138.0 | 1.2 | 1.1 | 0.1 | -1.1 | 0.1 |
| Plastics and articles thereof..... | 39 | 4.144 | 132.4 | 132.9 | 0.9 | 0.7 | 0.3 | -0.5 | 0.4 |
| Rubber and articles thereof..... | 40 | 0.989 | 161.1 | 159.9 | 2.6 | 2.6 | -0.5 | -3.4 | -0.7 |
| Raw hides, skins, leather, furskins, travel goods, etc..... | VIII | 0.348 | 122.0 | 121.1 | 1.5 | 0.7 | -0.2 | -1.4 | -0.7 |
| Wood, wood charcoal, cork, straw, baskets and wickerwork (Dec. 2014=100)..... | IX | 0.638 | 98.2 | 97.2 | 1.8 | 4.3 | 0.3 | 1.3 | -1.0 |
| Woodpulp, recovered paper, and paper products..... | X | 2.100 | 123.9 | 126.7 | 4.5 | 2.4 | -3.6 | -0.3 | 2.3 |
| Woodpulp and recovered paper..... | 47 | 0.651 | 130.4 | 139.3 | 13.7 | 6.8 | -11.7 | -0.9 | 6.8 |
| Paper and paperboard; articles of paper pulp, paper or paperboard..... | 48 | 1.095 | 120.2 | 120.5 | 0.7 | 0.1 | 0.8 | -0.1 | 0.2 |
| Printed material (Dec. 2014=100)..... | 49 | 0.354 | 101.5 | 101.5 | 1.1 | 0.9 | 0.0 | 0.0 | 0.0 |
| Textile and textile articles..... | XI | 1.764 | 121.1 | 120.3 | 0.7 | -0.6 | 0.1 | 0.0 | -0.7 |
| Cotton, including yarns and woven fabrics thereof..... | 52 | 0.471 | 130.6 | 127.5 | 8.1 | 1.1 | 0.1 | 0.5 | -2.4 |

See footnotes at end of table.

Table 6. U.S. export price indexes and percent changes for selected categories of goods: June 2016 to June 2017 — Continued

[2000=100, unless otherwise noted]

| Description | Harmoni- zied system | Relative importance May 2017 ¹ | Index | | Percent change | | | | |
|--|----------------------------|--|-------------|--------------|---------------------------------|---------------------------------|---------------------------------|--------------------------------|--------------------------------|
| | | | May 2017 | June 2017 | Annual | Monthly | | | |
| | | | | | June 2016 to June 2017 | Feb. 2017 to Mar. 2017 | Mar. 2017 to Apr. 2017 | Apr. 2017 to May 2017 | May 2017 to June 2017 |
| Stone, plaster, cement, asbestos, ceramics, glass etc..... | XIII | 0.838 | 122.8 | 123.0 | 0.2 | 0.8 | -0.6 | 0.2 | 0.2 |
| Articles of stone, plaster, cement, asbestos, or mica (Dec. 2015=100)..... | 68 | 0.280 | 101.1 | 101.1 | 0.6 | 0.8 | 0.2 | -0.1 | 0.0 |
| Glass and glassware..... | 70 | 0.429 | 99.2 | 99.1 | -0.6 | 0.0 | 0.0 | -0.1 | -0.1 |
| Pearls, stones, precious metals, imitation jewelry, and coins..... | XIV | 4.192 | 230.5 | 233.5 | 1.7 | 1.8 | 0.3 | -0.8 | 1.3 |
| Base metals and articles of base metals. ... | XV | 4.986 | 152.7 | 151.2 | 5.5 | 1.0 | 0.3 | -0.1 | -1.0 |
| Iron and steel..... | 72 | 1.045 | 157.3 | 153.4 | 6.0 | 2.3 | -0.2 | -0.7 | -2.5 |
| Copper and articles thereof..... | 74 | 0.478 | 168.6 | 167.8 | 11.8 | -0.4 | 0.2 | -0.3 | -0.5 |
| Aluminum and articles thereof..... | 76 | 0.862 | 113.9 | 111.3 | 6.3 | 2.9 | 0.9 | 0.2 | -2.3 |
| Tools, implements, cutlery, spoons and forks, of base metal (Dec. 2015=100). | 82 | 0.350 | 99.5 | 99.5 | -0.5 | 0.0 | 0.0 | 0.0 | 0.0 |
| Miscellaneous articles of base metal..... | 83 | 0.348 | 148.2 | 148.0 | 0.2 | 0.3 | 0.0 | 0.0 | -0.1 |
| Machinery, electrical equipment, TV image and sound recorders, parts, etc..... | XVI | 28.848 | 96.1 | 96.1 | 0.2 | 0.1 | 0.1 | 0.1 | 0.0 |
| Machinery and mechanical appliances; parts thereof..... | 84 | 16.968 | 113.7 | 113.8 | 0.8 | 0.0 | 0.4 | 0.0 | 0.1 |
| Electrical machinery and equipment and parts and accessories thereof..... | 85 | 11.880 | 77.0 | 77.0 | -0.6 | 0.1 | 0.0 | 0.0 | 0.0 |
| Vehicles, aircraft, vessels and associated transport equipment..... | XVII | 15.046 | 132.6 | 132.7 | 0.8 | 0.0 | 0.2 | 0.0 | 0.1 |
| Motor vehicles and their parts..... | 87 | 8.735 | 115.2 | 115.1 | 0.2 | 0.0 | 0.2 | -0.1 | -0.1 |
| Optical, photo, measuring, medical & musical instruments; & timepieces..... | XVIII | 6.074 | 106.4 | 106.7 | 0.6 | 0.0 | 0.0 | 0.1 | 0.3 |
| Miscellaneous manufactured articles..... | XX | 1.493 | 112.4 | 112.4 | 0.7 | -0.2 | -0.1 | -0.1 | 0.0 |
| Furniture; stuffed furnishings; lamps and lighting fittings nesoi;..... | 94 | 0.903 | 128.4 | 128.4 | 1.7 | -0.2 | 0.2 | 0.0 | 0.0 |
| Toys, games and sports equipment; parts and accessories thereof..... | 95 | 0.437 | 88.7 | 88.7 | -0.6 | -0.2 | -0.7 | 0.0 | 0.0 |

¹ Relative importance figures are based on 2015 trade values.

NOTES: Data may be revised in each of the 3 months after original publication.

Dash = Not available

Table 7. U.S. import price indexes and percent changes by locality of origin: June 2016 to June 2017
 [2000=100, unless otherwise noted]

| Description | Relative importance May 2017 ¹ | Index | | Percent change | | | | |
|---|---|----------|-----------|------------------------|------------------------|------------------------|-----------------------|-----------------------|
| | | May 2017 | June 2017 | Annual | Monthly | | | |
| | | | | June 2016 to June 2017 | Feb. 2017 to Mar. 2017 | Mar. 2017 to Apr. 2017 | Apr. 2017 to May 2017 | May 2017 to June 2017 |
| Industrialized Countries² | 100.000 | 119.4 | 119.3 | 1.6 | -0.3 | 0.2 | 0.2 | -0.1 |
| Nonmanufacturing..... | 8.627 | 137.5 | 134.7 | 6.6 | -4.0 | -0.7 | 3.4 | -2.0 |
| Manufacturing..... | 90.919 | 117.5 | 117.6 | 1.1 | 0.0 | 0.3 | -0.1 | 0.1 |
| Other Countries³ | 100.000 | 119.2 | 118.9 | 0.4 | -0.2 | 0.2 | -0.3 | -0.3 |
| Nonmanufacturing..... | 8.798 | 194.4 | 190.9 | 9.0 | -3.7 | 0.1 | -0.9 | -1.8 |
| Manufacturing..... | 90.996 | 102.8 | 102.7 | -0.4 | 0.2 | 0.1 | -0.2 | -0.1 |
| Canada | 100.000 | 125.3 | 124.2 | 3.4 | -1.1 | -0.1 | 0.8 | -0.9 |
| Nonmanufacturing..... | 23.900 | 131.8 | 128.5 | 6.5 | -4.2 | -0.8 | 3.4 | -2.5 |
| Manufacturing..... | 75.318 | 127.4 | 126.9 | 2.4 | -0.2 | 0.1 | 0.1 | -0.4 |
| European Union⁴ | 100.000 | 132.3 | 132.8 | 0.5 | 0.2 | 0.0 | 0.0 | 0.4 |
| Manufacturing..... | 99.459 | 129.0 | 129.4 | 0.5 | 0.2 | 0.1 | 0.0 | 0.3 |
| France (Dec. 2003=100) | 100.000 | 120.8 | 121.1 | -1.2 | 0.3 | -0.4 | -0.1 | 0.2 |
| Germany (Dec. 2003=100) | 100.000 | 113.8 | 114.1 | 0.8 | 0.0 | 0.5 | -0.1 | 0.3 |
| United Kingdom (Dec. 2003=100) | 100.000 | 117.3 | 117.7 | -0.9 | 0.0 | -0.5 | 0.2 | 0.3 |
| Latin America⁵ | 100.000 | 143.3 | 142.6 | 2.3 | -0.6 | 0.7 | -0.2 | -0.5 |
| Nonmanufacturing..... | 17.936 | 221.3 | 217.7 | 10.5 | -4.8 | 0.9 | -0.9 | -1.6 |
| Manufacturing..... | 81.723 | 120.3 | 120.1 | 0.6 | 0.5 | 0.6 | -0.1 | -0.2 |
| Mexico (Dec. 2003=100) | 100.000 | 126.9 | 126.7 | 0.2 | 0.4 | 2.0 | 0.3 | -0.2 |
| Nonmanufacturing (Dec. 2008=100)..... | 8.845 | 123.5 | 123.4 | 15.3 | 2.2 | 1.0 | 3.0 | -0.1 |
| Manufacturing (Dec. 2008=100)..... | 90.846 | 88.1 | 88.0 | -1.1 | 0.2 | 2.1 | 0.0 | -0.1 |
| Pacific Rim (Dec. 2003=100)⁶ | 100.000 | 98.4 | 98.3 | -0.2 | 0.1 | 0.0 | 0.0 | -0.1 |
| China (Dec. 2003=100) | 100.000 | 100.1 | 100.0 | -1.0 | 0.2 | -0.1 | 0.0 | -0.1 |
| Japan | 100.000 | 96.4 | 96.3 | 1.0 | 0.2 | -0.1 | 0.0 | -0.1 |
| Asian NICs⁷ | 100.000 | 85.8 | 85.9 | 1.9 | 0.4 | 0.7 | 0.0 | 0.1 |
| ASEAN (Dec. 2003=100)⁸ | 100.000 | 98.0 | 98.0 | 0.8 | 0.1 | 0.1 | 0.1 | 0.0 |
| Asia Near East (Dec. 2003=100)⁹ | 100.000 | 152.8 | 149.2 | 3.2 | -1.5 | -2.8 | -1.8 | -2.4 |

¹ Relative importance figures are based on 2015 trade values.

² Western Europe, Canada, Japan, Australia, New Zealand, and South Africa.

³ Eastern Europe, Latin America, OPEC countries, and other countries in Asia, Africa, and the Western Hemisphere.

⁴ European Union countries.

⁵ Mexico, Central America, South America, and the Caribbean.

⁶ China, Japan, Australia, Brunei, Indonesia, Macao, Malaysia, New Zealand, Papua New Guinea, Philippines, and the Asian Newly Industrialized Countries.

⁷ Asian Newly Industrialized Countries - Hong Kong, Singapore, South Korea, and Taiwan.

⁸ Association of Southeast Asian Nations - Brunei, Cambodia, Indonesia, Laos, Malaysia, Myanmar, Philippines, Singapore, Thailand, and Vietnam.

⁹ Bahrain, Iran, Iraq, Israel, Jordan, Kuwait, Lebanon, Oman, Qatar, Saudi Arabia, Syria, United Arab Emirates, and Yemen.

NOTES: Data may be revised in each of the 3 months after original publication.

Regions are not mutually exclusive.

Dash = Not available

Table 8. U.S. international price indexes and percent changes for selected transportation services: June 2016 to June 2017

[2000=100, unless otherwise noted]

| Description | Relative importance May 2017 ¹ | Index | | Percent change | | | | |
|---|---|----------|-----------|----------------------------------|------------------------|------------------------|-----------------------|-----------------------|
| | | May 2017 | June 2017 | Annual June 2016 to June 2017 | Monthly | | | |
| | | | | | Feb. 2017 to Mar. 2017 | Mar. 2017 to Apr. 2017 | Apr. 2017 to May 2017 | May 2017 to June 2017 |
| Air Freight | | | | | | | | |
| Import Air Freight | 100.000 | 166.2 | 164.8 | 11.8 | 0.6 | 1.5 | 0.7 | -0.8 |
| Europe (Dec. 2003=100)..... | 24.945 | 140.8 | 139.0 | 0.7 | 0.1 | 2.9 | 0.1 | -1.3 |
| Asia..... | 62.050 | 152.9 | 151.9 | 18.6 | 1.1 | 1.6 | 0.3 | -0.7 |
| Export Air Freight | 100.000 | 159.4 | 160.1 | 4.3 | 1.4 | -0.3 | 0.5 | 0.4 |
| Europe (Dec. 2006=100)..... | 35.971 | 146.9 | 146.9 | 1.0 | -0.2 | 0.0 | -0.1 | 0.0 |
| Inbound Air Freight | 100.000 | 155.6 | 155.7 | 9.8 | 0.3 | 0.7 | 0.8 | 0.1 |
| Europe (Dec. 2003=100)..... | 26.720 | 132.3 | 132.7 | -2.0 | -0.5 | 0.9 | -0.8 | 0.3 |
| Asia..... | 59.479 | 143.5 | 143.8 | 17.5 | 0.7 | 1.4 | 0.6 | 0.2 |
| Outbound Air Freight | 100.000 | 139.5 | 138.7 | 0.5 | 0.4 | -1.6 | 1.8 | -0.6 |
| Europe (Dec. 2003=100)..... | 30.782 | 145.4 | 145.4 | 3.1 | 0.6 | 0.7 | 0.0 | 0.0 |
| Asia..... | 46.546 | 134.1 | 132.7 | 0.8 | 0.3 | -4.0 | 4.0 | -1.0 |
| Air Passenger Fares | | | | | | | | |
| Import Air Passenger Fares | 100.000 | 175.3 | 181.7 | -3.8 | -4.0 | -3.2 | 3.9 | 3.7 |
| Europe..... | 39.872 | 189.5 | 197.4 | -11.9 | -8.6 | -7.5 | 3.7 | 4.2 |
| Asia..... | 22.573 | 136.2 | 151.1 | 2.3 | -0.4 | 0.2 | 6.2 | 10.9 |
| Latin America/Caribbean..... | 9.746 | 156.0 | 162.7 | 6.8 | 2.4 | 0.9 | -4.6 | 4.3 |
| Export Air Passenger Fares | 100.000 | 149.3 | 156.6 | 2.3 | 4.1 | -6.0 | 1.9 | 4.9 |
| Europe..... | 30.587 | 192.9 | 207.7 | -2.4 | -4.5 | -9.2 | 3.4 | 7.7 |
| Asia..... | 25.292 | 123.4 | 128.2 | -4.2 | 2.2 | -1.7 | -0.6 | 3.9 |
| Latin America/Caribbean..... | 24.383 | 158.7 | 161.6 | 5.5 | 5.7 | -3.0 | -2.3 | 1.8 |

¹ Relative importance figures are based on 2015 trade values.

NOTES: Data may be revised in each of the 3 months after original publication.

Dash = Not available

TECHNICAL NOTE

Announcement - The Bureau of Labor Statistics is utilizing new index estimation and review systems for the import and export price indexes effective with the release of the June 2017 price data on July 18, 2017. The new estimation and index review systems, the first major improvement to the existing systems in over 20 years, are redesigned, state-of-the-art systems with improved flexibility and review capabilities. The changes to the systems will not have a significant effect on the estimates of price change for the U.S. import and export price indexes.

Import and Export Merchandise and Services Price Indexes - All indexes use a modified Laspeyres formula and are not seasonally adjusted. Price indexes are reweighted annually, with a 2-year lag in the weights. Published series use a base year of 2000=100 where possible. More detailed index series and additional information may be obtained at www.bls.gov/mxp or by calling (202) 691-7101.

Merchandise Goods Classification Systems - The merchandise price indexes are published using three classification systems. Items are classified by end use according to the Bureau of Economic Analysis Classification System, by industry according to the North American Industry Classification System (NAICS), and by product category according to the Harmonized System (HS). While classification by end use and product category are self-explanatory, some notes are in order for classifying items by industry. In the NAICS imports and exports tables, items are classified by output industry, not input industry. As an example, NAICS import index 326 (plastics and rubber products manufacturing) include outputs such as manufactured plastic rather than inputs such as petroleum. The NAICS classification structure also matches the classification system used by the Producer Price Index (PPI) to produce the NAICS primary products indexes.

Import Price Indexes - Products have been classified by the Harmonized Tariff Schedule of the United States Annotated (TSUSA). Import prices are based on U.S. dollar prices paid by the U.S. importer. The prices are generally either "free on board" (f.o.b.) foreign port or "cost, insurance, and freight" (c.i.f.) U.S. port transaction prices, depending on the practices of the individual industry. The index for crude petroleum is calculated from data collected by the U.S. Department of Energy.

Export Price Indexes - Products have been classified by the Harmonized Schedule B classification system of the U.S. Bureau of the Census. The prices used are generally either "free alongside ship" (f.a.s.) factory or "free on board" (f.o.b.) transaction prices, depending on the practices of the individual industry. Prices used in the grain index, excluding rice, are obtained from the U.S. Department of Agriculture.

Services Price Indexes - Starting in September 2008, the import air passenger fares indexes represent changes in the average revenue per passenger received by foreign carriers from U.S. residents and are calculated from data obtained from an airline consulting service. These data include tickets sold by travel agencies and travel websites. Tickets sold directly by the airlines are excluded, as are frequent flyer tickets generally. Starting in January 2008, the export air passenger fares indexes represent changes in the average revenue per passenger received by U.S. carriers from foreign residents and are calculated from data collected directly from airlines. These data include frequent flyer tickets and those sold by consolidators. Taxes and fees are included in the import air passenger fares indexes and excluded from the export air passenger fares indexes. The air freight indexes are calculated from data collected directly from airlines. These data exclude mail and passenger baggage. The scope of the service being priced is the movement of freight from airport to airport only, and does not include any ground transportation or port service. The air freight indexes are presented using two definitions: balance of payments (which represent transactions between U.S. and foreign residents) and international (which represent transactions inbound to and outbound from the U.S.). Fact sheets specifying detailed information for each services industry are available at www.bls.gov/mxp under "MXP Publications."

Import Indexes by Locality of Origin - Prices used in these indexes are a subset of the data collected for the import price indexes. Beginning with January 2002, the indexes are defined by locality of origin using a nomenclature based upon the North American Industry Classification System (NAICS). Nonmanufactured goods are defined as NAICS 11 and 21, and manufactured goods are defined as NAICS 31-33.

Revision Policy - To reflect the availability of late reports and corrections by respondents, monthly data may be revised in each of the 3 months after original publication. After 3 months, no further data revisions take place. For example, data first published in the January release will be subject to revision in the releases for February, March, and April.

Uses of the Data - The primary use of the indexes is to deflate trade statistics, notably the foreign trade sector of the National Income and Product Accounts (NIPA) constructed by the Department of Commerce. Other published indexes are useful for general market analysis. For trade in international services, balance of payments indexes are used for deflating NIPA, while international indexes are more appropriate for market analysis. Merchandise and services indexes also can be used to study U.S. competitiveness and to compute price elasticities, and the merchandise import indexes by country or region of origin are useful in terms of trade analysis.

Email Subscription - The U.S. import and export price indexes news release is available through an email subscription service at www.bls.gov/bls/list.htm.

Additional Information - More detailed data are available on the Import/Export Price Indexes home page at www.bls.gov/mxp. For import and export price indexes data requests, send an email to mxpinfo@bls.gov.

Information from this release will be made available to sensory impaired individuals upon request. Voice phone: (202)-691-5200; Federal Relay Service: 1-(800)-877-8339.