

Transmission of material in this release is embargoed until
8:30 a.m. (EDT) Friday, October 9, 2015

USDL-15-1956

Technical information: (202) 691-7101 • MXPinfo@bls.gov • www.bls.gov/mxp
Media contact: (202) 691-5902 • PressOffice@bls.gov

U.S. IMPORT AND EXPORT PRICE INDEXES – SEPTEMBER 2015

Prices for U.S. imports edged down 0.1 percent in September, after a 1.6-percent decrease in August, the U.S. Bureau of Labor Statistics reported today. The continued downward trend in nonfuel import prices more than offset an advance in fuel prices. The price index for U.S. exports declined 0.7 percent in September, following a 1.4-percent drop the previous month.

Chart 1. One-month percent change in the Import Price Index: September 2014 – September 2015

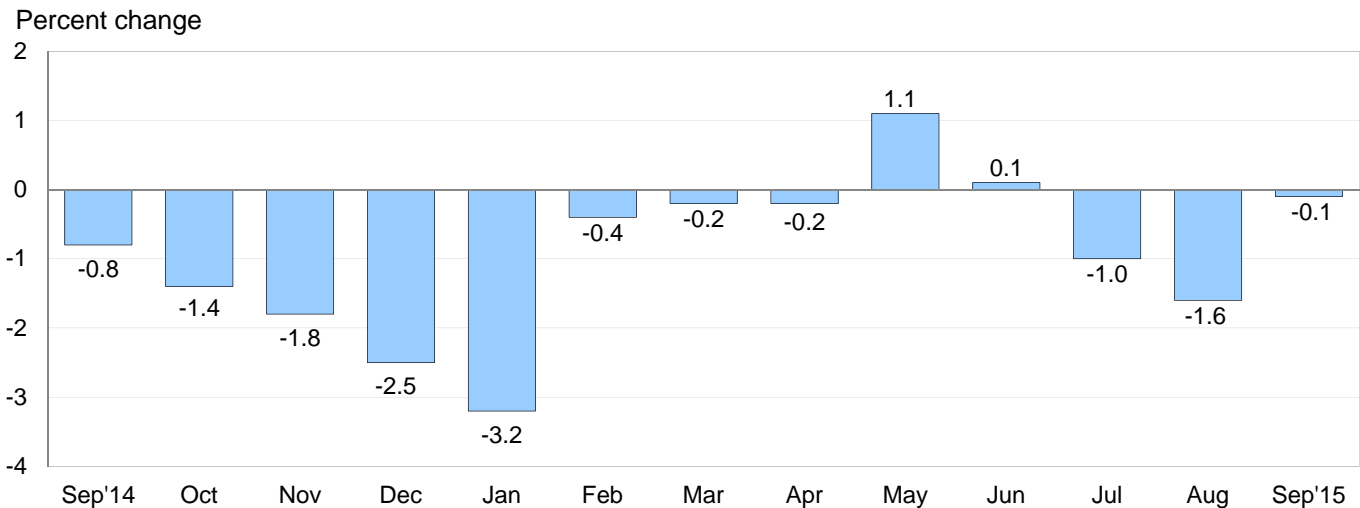
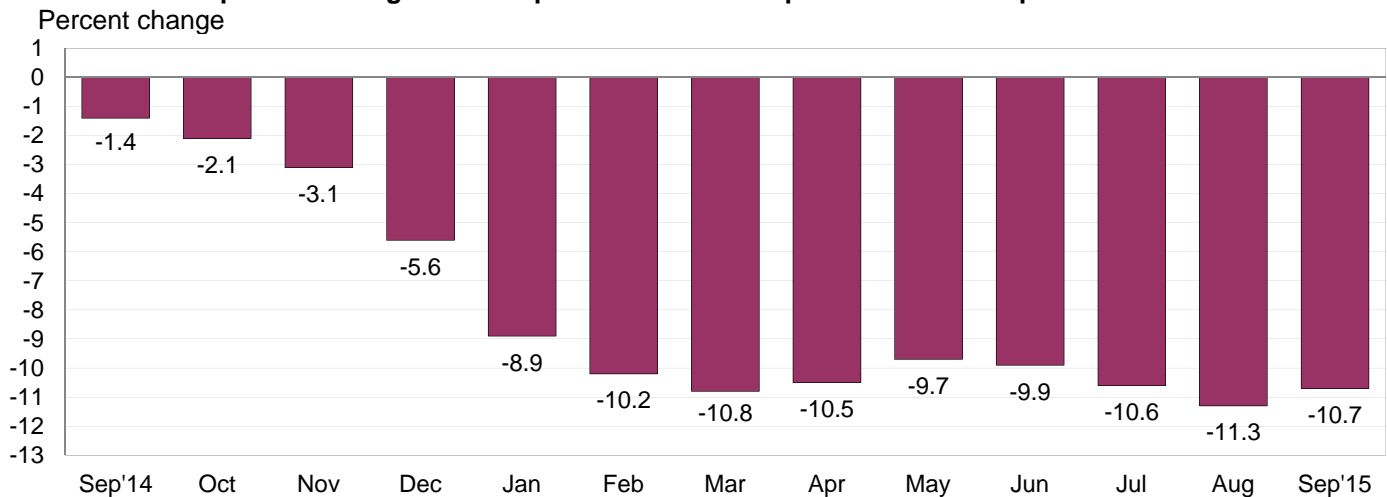


Chart 2. 12-month percent change in the Import Price Index: September 2014 – September 2015



All Imports: U.S. import prices fell 0.1 percent in September, following declines of 1.6 percent in August and 1.0 percent in July. Unlike the decreases the 2 previous months where falling fuel and nonfuel prices each contributed to the decline, the September drop was entirely driven by lower nonfuel prices. The price index for overall imports decreased 10.7 percent between September 2014 and September 2015 and has not recorded a 12-month increase since the index rose 0.9 percent for the year ended July 2014.

All Imports Excluding Fuel: The price index for nonfuel imports continued to trend downward in September, decreasing 0.3 percent following a 0.4-percent drop the previous month. Falling prices for nonfuel industrial supplies and materials; foods, feeds, and beverages; and capital goods more than offset a rise in consumer goods prices. Nonfuel import prices have not recorded a monthly advance since the index rose 0.1 percent in July 2014 and have declined 3.1 percent over the past year.

Fuel Imports: In contrast, prices for import fuel advanced 1.4 percent in September, after declining 11.1 percent in August and 6.4 percent in July. Both petroleum prices and natural gas prices contributed to the increase in September. Petroleum prices rose 1.1 percent, following an 11.8-percent decline in August and a 6.6-percent drop in July. The price index for natural gas advanced 9.3 percent in September, the largest monthly increase for the index since an 11.1-percent rise in December 2014. Despite the September advance, overall fuel prices declined 44.7 percent over the past 12 months. The drop was led by a 46.1-percent decrease in petroleum prices for the year ended in September, although a 27.3-percent drop in natural gas prices over the same period also factored into the overall decline.

Table A. Percent change in Import and Export Price Indexes, selected categories

Month	IMPORTS			EXPORTS		
	All imports	Fuel imports	Nonfuel imports	All exports	Agricultural exports	Non-agricultural exports
2014						
September.....	-0.8	-3.6	-0.2	-0.4	-1.6	-0.2
October.....	-1.4	-6.8	-0.1	-0.9	-2.2	-0.7
November.....	-1.8	-9.3	-0.3	-0.9	0.1	-1.0
December.....	-2.5	-15.0	-0.1	-0.9	-0.7	-1.0
2015						
January.....	-3.2	-20.1	-0.7	-1.7	-1.4	-1.8
February.....	-0.4	-1.9	-0.2	-0.2	-2.2	0.2
March.....	-0.2	1.5	-0.4	0.0	-1.6	0.2
April.....	-0.2	1.8	-0.3	-0.6	-0.9	-0.7
May.....	1.1	10.8	0.0	0.5	-1.3	0.6
June.....	0.1	1.5 ^r	-0.2	-0.3 ^r	-1.6	-0.1
July.....	-1.0 ^r	-6.4 ^r	-0.3	-0.4	1.0 ^r	-0.6 ^r
August.....	-1.6 ^r	-11.1 ^r	-0.4	-1.4	-2.5 ^r	-1.3
September.....	-0.1	1.4	-0.3	-0.7	-1.1	-0.6
Sept. 2013 to 2014.....	-1.4	-7.9	0.4	-0.4	-3.7	-0.1
Sept. 2014 to 2015.....	-10.7	-44.7	-3.1	-7.4	-13.5	-6.7

r Revised

Chart 3. One-month percent change in the Export Price Index: September 2014 – September 2015

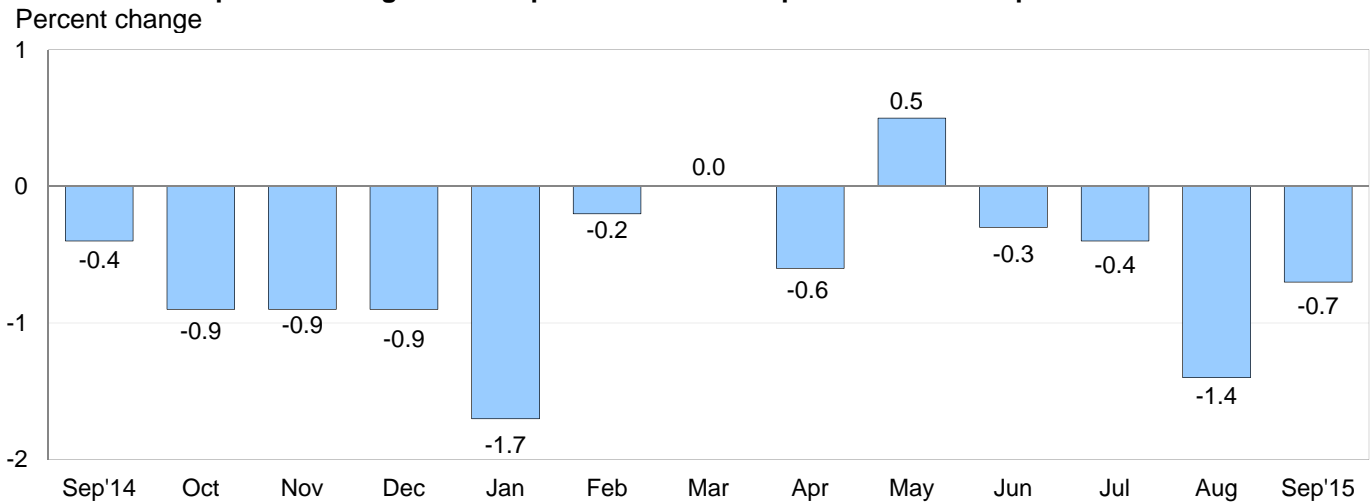
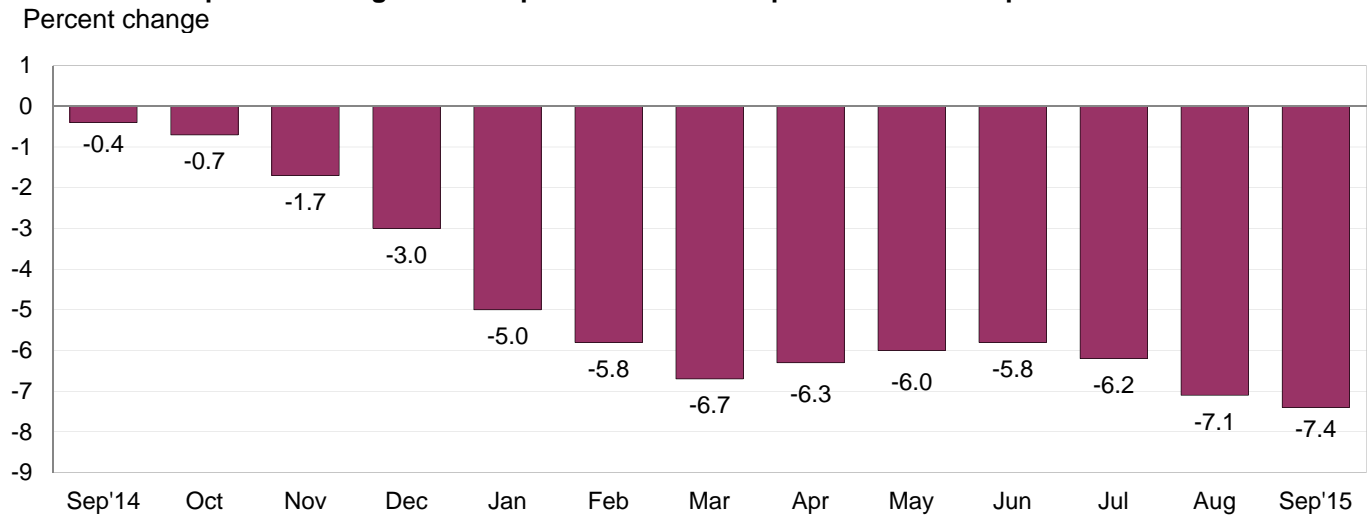


Chart 4. 12-month percent change in the Export Price Index: September 2014 – September 2015



All Exports: Prices for U.S. exports fell 0.7 percent in September, following a 1.4-percent drop the previous month. Falling agricultural and nonagricultural export prices each contributed to the September and August declines. The price index for overall exports fell 7.4 percent over the past year, the largest year-over-year decrease for the index since an 8.3-percent drop for the 12 months ended July 2009.

Agricultural Exports: Agricultural export prices declined 1.1 percent in September, after falling 2.5 percent in August. The decrease was mostly the result of an 8.3-percent drop in soybean prices, although a 4.3-percent decline in nut prices also contributed to falling export agricultural prices. The price index for agricultural exports decreased 13.5 percent for the year ended in September. Declining prices for meat, soybeans, and wheat over the past year primarily drove the drop.

All Exports Excluding Agriculture: Prices for nonagricultural exports declined 0.6 percent in September, following a 1.3-percent drop the previous month. The September decrease was led by declining prices for nonagricultural industrial supplies and materials, consumer goods, and automotive vehicles. Overall nonagricultural prices fell 6.7 percent over the past year, the largest 12-month drop for the index since the index was first published in March 1985.

SELECTED SEPTEMBER HIGHLIGHTS

Import Prices

Imports by Locality of Origin: Prices for imports from China declined 0.2 percent in September and 1.3 percent over the past 12 months. The price index for imports from Japan recorded no change in September and has not increased on a monthly basis since the index rose 0.2 percent in March 2014. Prices for imports from Japan decreased 3.2 percent between September 2014 and September 2015. Import prices from the European Union declined 1.0 percent in September, the largest 1-month drop since a 1.6-percent decrease in January. The price indexes for imports from Canada and Mexico also fell in September, decreasing 0.4 percent and 0.1 percent, respectively.

Nonfuel Industrial Supplies and Materials: The price index for nonfuel industrial supplies and materials fell 0.9 percent in September, following a 1.9-percent drop the previous month. Lower prices for chemicals, metals, and building materials led the decrease.

Finished Goods: Prices for the major finished goods categories were mixed in September. Import capital goods prices edged down 0.1 percent for the month and fell 2.3 percent over the past year. In contrast, prices for consumer goods ticked up 0.1 percent, after declines of 0.1 percent in August and 0.3 percent in July. The price index for automotive vehicles recorded no change in September.

Foods, Feeds, and Beverages: Foods, feeds, and beverages prices declined 0.8 percent in September, after rising 0.3 percent in August. Falling prices for food oils, feedstuff, fruit, fish, and coffee all contributed to the overall drop in September.

Transportation Services: Import air passenger fares declined 4.5 percent in September, following a 5.1-percent drop the previous month. The September decrease was driven by lower Asian and Latin American/Caribbean fares which more than offset rising European fares. Overall import air passenger fares fell 7.2 percent for the year ended in September. The price index for import air freight declined 2.0 percent for the second consecutive month in September. Import air freight prices decreased 10.4 percent over the past 12 months.

Export Prices

Nonagricultural Industrial Supplies and Materials: In September, the price index for nonagricultural industrial supplies and materials fell 1.8 percent, after decreasing 3.7 percent in August. Both monthly declines were led by lower fuel prices which decreased 5.3 percent in September and 8.4 percent in August.

Finished Goods: Finished goods prices were mostly down in September. The price index for consumer goods declined 0.2 percent, following 0.4-percent decreases in August and July. Automotive vehicle prices also fell in September, declining 0.1 percent. Prices for capital goods recorded no change in both September and over the past year.

Transportation Services: Export air passenger fares decreased 10.8 percent in September, the largest monthly decline since the index fell 13.5 percent in February. The September drop was driven by a 23.2-percent decrease in Asian fares. Overall export air passenger fares fell 16.3 percent over the past 12 months. Export air freight prices declined 0.8 percent in September and 2.1 percent over the past year.

Import and Export Price Index data for October 2015 are scheduled for release on Tuesday, November 10, 2015 at 8:30 a.m. (EST).

Table 1. U.S. import price indexes and percent changes for selected categories of goods: September 2014 to September 2015

[2000=100, unless otherwise noted]

Description	End Use	Relative importance Aug. 2015 ¹	Index		Percent change				
			Aug. 2015	Sept. 2015	Annual	Monthly			
					Sept. 2014 to Sept. 2015	May 2015 to June 2015	June 2015 to July 2015	July 2015 to Aug. 2015	Aug. 2015 to Sept. 2015
All commodities		100.000	123.3	123.2	-10.7	0.1	-1.0	-1.6	-0.1
All imports excluding food and fuels (Dec. 2010=100)		83.556	99.2	99.0	-3.1	-0.2	-0.3	-0.4	-0.2
All imports excluding petroleum		90.332	112.0	111.8	-3.3	-0.1	-0.4	-0.4	-0.2
All imports excluding fuels (Dec. 2001=100)		89.597	116.1	115.8	-3.1	-0.2	-0.3	-0.4	-0.3
Foods, feeds, & beverages	0	6.041	175.9	174.5	-3.1	-0.6	-0.1	0.3	-0.8
Agricultural foods, feeds & beverages, excluding distilled beverages.....	00	4.706	194.9	193.2	-2.1	-0.5	0.1	-0.1	-0.9
Nonagricultural foods (fish, distilled beverages).....	01	1.335	132.7	131.7	-6.4	-1.1	-0.4	1.6	-0.8
Industrial supplies & materials	1	23.712	168.3	168.4	-30.2	0.5	-3.6	-6.1	0.1
Industrial supplies & materials excluding petroleum.....		14.044	144.1	143.3	-10.6	-0.3	-1.1	-1.8	-0.6
Industrial supplies & materials excluding fuels (Dec. 2001=100).....		13.309	163.6	162.1	-10.1	-0.3	-1.0	-1.9	-0.9
Industrial supplies & materials, durable....		7.771	149.4	148.3	-12.4	-0.6	-1.4	-2.4	-0.7
Industrial supplies & materials nondurable excluding petroleum.....		5.538	137.3	136.8	-8.2	0.1	-0.6	-1.2	-0.4
Fuels & lubricants.....	10	10.402	174.5	176.9	-44.7	1.5	-6.4	-11.1	1.4
Petroleum & petroleum products.....	100	9.667	189.2	191.3	-46.1	1.6	-6.6	-11.8	1.1
Crude.....	10000	6.967	191.4	199.2	-45.5	3.0	-7.6	-12.4	4.1
Fuels, n.e.s.-coals & gas.....	101	0.548	95.3	101.7	-22.2	0.9	-1.2	-0.2	6.7
Gas-natural.....	10110	0.388	78.6	85.9	-27.3	1.9	-1.7	-0.1	9.3
Paper & paper base stocks.....	11	0.595	109.4	109.4	-3.4	-0.6	-0.5	-0.4	0.0
Materials associated with nondurable supplies & materials.....	12	5.012	158.5	156.5	-7.0	0.1	-0.3	-1.3	-1.3
Selected building materials.....	13	1.208	135.6	133.5	-6.3	0.8	0.7	-1.5	-1.5
Unfinished metals related to durable goods.....	14	3.101	191.5	189.7	-21.7	-1.4	-3.3	-4.4	-0.9
Finished metals related to durable goods.....	15	1.699	150.1	149.1	-5.9	-0.4	-0.7	-1.0	-0.7
Nonmetals related to durable goods.....	16	1.694	109.2	109.3	-2.7	-0.2	-0.2	-0.4	0.1
Capital goods	2	27.769	90.4	90.3	-2.3	-0.1	-0.3	-0.2	-0.1
Electric generating equipment.....	20	3.387	117.6	117.5	-2.4	0.0	-0.3	-0.2	-0.1
Nonelectrical machinery.....	21	21.915	82.9	82.8	-2.5	-0.1	-0.4	-0.2	-0.1
Transportation equipment excluding motor vehicles (Dec. 2001=100).....	22	2.467	137.0	136.8	0.1	0.1	0.0	0.0	-0.1
Automotive vehicles, parts & engines	3	15.525	111.0	111.0	-1.4	-0.1	0.1	-0.2	0.0
Consumer goods, excluding automobiles	4	26.953	107.0	107.1	-1.1	0.0	-0.3	-0.1	0.1
Nondurables, manufactured.....	40	12.857	118.7	118.8	0.0	0.0	-0.3	-0.1	0.1
Durables, manufactured.....	41	12.606	95.3	95.6	-1.8	0.0	-0.2	-0.2	0.3
Nonmanufactured consumer goods.....	42	1.490	117.4	116.7	-3.6	0.1	-0.7	-0.2	-0.6

¹ Relative importance figures are based on 2013 trade values.

NOTES: Data may be revised in each of the three months after original publication.

Dash = Not available

Table 2. U.S. export price indexes and percent changes for selected categories of goods: September 2014 to September 2015

[2000=100, unless otherwise noted]

Description	End Use	Relative importance Aug. 2015 ¹	Index		Percent change				
			Aug. 2015	Sept. 2015	Annual	Monthly			
					Sept. 2014 to Sept. 2015	May 2015 to June 2015	June 2015 to July 2015	July 2015 to Aug. 2015	Aug. 2015 to Sept. 2015
All commodities.....		100.000	123.0	122.2	-7.4	-0.3	-0.4	-1.4	-0.7
Agricultural commodities.....		8.808	181.4	179.4	-13.5	-1.6	1.0	-2.5	-1.1
All exports excluding food and fuels (Dec. 2010=100).....		84.399	99.5	99.3	-2.8	-0.1	-0.4	-0.6	-0.2
Nonagricultural commodities.....		91.191	118.6	117.9	-6.7	-0.1	-0.6	-1.3	-0.6
Foods, feeds, & beverages.....	0	8.129	182.0	180.0	-14.3	-2.3	1.6	-2.9	-1.1
Agricultural foods, feeds & beverages, excluding distilled beverages.....	00	7.478	183.1	180.9	-14.8	-1.6	1.5	-2.9	-1.2
Nonagricultural foods (fish, distilled beverages).....	01	0.651	177.9	177.8	-7.6	-9.4	2.6	-3.3	-0.1
Industrial supplies & materials.....	1	30.343	147.8	145.3	-17.1	-0.3	-1.5	-3.7	-1.7
Industrial supplies & materials, durable....		10.733	153.0	152.8	-10.2	-0.3	-1.7	-2.5	-0.1
Industrial supplies & materials, nondurable.....		19.610	145.8	142.1	-20.6	-0.4	-1.4	-4.3	-2.5
Agricultural industrial supplies & materials.....	10	1.330	176.4	175.5	-5.4	-1.6	-1.8	-0.4	-0.5
Nonagricultural industrial supplies & materials.....		29.013	146.9	144.3	-17.6	-0.3	-1.5	-3.7	-1.8
Fuels & lubricants.....	11	7.471	166.5	157.7	-37.0	-0.4	-2.4	-8.4	-5.3
Nonagricultural supplies & materials excluding fuels & building materials.....	12	20.557	152.5	151.8	-8.8	-0.2	-1.2	-2.1	-0.5
Selected building materials.....	13	0.985	113.9	112.8	-7.2	-1.7	-0.2	-1.5	-1.0
Capital goods.....	2	38.523	107.3	107.3	0.0	0.0	0.0	-0.2	0.0
Electrical generating equipment.....	20	3.883	114.0	113.2	-2.4	-0.1	-0.3	0.1	-0.7
Nonelectrical machinery.....	21	26.318	94.9	95.0	-0.5	0.0	-0.1	-0.1	0.1
Transportation equipment excluding motor vehicles (Dec. 2001=100).....	22	8.321	161.6	161.6	3.2	0.1	0.1	0.0	0.0
Automotive vehicles, parts & engines.....	3	10.347	113.8	113.7	-0.3	0.0	-0.2	0.0	-0.1
Consumer goods, excluding automotives.....	4	12.657	112.2	112.0	-2.8	0.4	-0.4	-0.4	-0.2
Nondurables, manufactured.....	40	5.606	107.9	107.6	-4.1	0.3	-0.4	-0.5	-0.3
Durables, manufactured.....	41	5.409	110.4	110.2	-1.3	0.5	-0.5	-0.2	-0.2

¹ Relative importance figures are based on 2013 trade values.

NOTES: Data may be revised in each of the three months after original publication.

Dash = Not available

Table 3. U.S. import price indexes and percent changes for selected categories of goods: September 2014 to September 2015

[December 2005=100, unless otherwise noted]

Description	NAICS	Relative importance Aug. 2015 ¹	Index		Percent change				
			Aug. 2015	Sept. 2015	Annual	Monthly			
					Sept. 2014 to Sept. 2015	May 2015 to June 2015	June 2015 to July 2015	July 2015 to Aug. 2015	Aug. 2015 to Sept. 2015
Nonmanufactured articles.....		9.657	94.3	97.6	-39.2	1.9	-6.1	-9.3	3.5
Agriculture, forestry, fishing and hunting.....	11	2.067	175.2	175.9	-1.2	-0.8	-0.5	-0.3	0.4
Crop production.....	111	1.656	185.0	186.7	0.8	-1.1	-0.5	-0.3	0.9
Animal production (Dec. 2014=100).....	112	0.221	89.2	86.7	–	2.4	-2.9	-2.2	-2.8
Forestry and logging (Dec. 2012=100).....	113	0.115	66.2	65.8	-9.1	-0.3	1.7	2.0	-0.6
Mining.....	21	7.590	84.6	88.2	-44.3	2.6	-7.3	-11.5	4.3
Mining (except oil and gas) (Dec. 2006=100).....	212	0.209	98.2	98.0	-19.9	-0.2	-4.3	0.0	-0.2
Manufactured articles.....		90.046	110.6	110.1	-5.2	-0.2	-0.4	-0.7	-0.5
Manufactured goods, part 1.....	31	12.117	124.4	123.9	-2.2	-0.2	-0.1	0.2	-0.4
Food manufacturing.....	311	3.357	152.8	150.5	-7.3	-0.6	-0.3	0.6	-1.5
Beverage and tobacco product manufacturing.....	312	1.106	118.2	118.3	0.7	0.2	0.5	-0.1	0.1
Textile mills (Dec. 2011=100).....	313	0.408	100.6	100.5	-2.1	0.0	-0.4	-0.2	-0.1
Textile product mills.....	314	0.895	111.8	111.8	-2.1	-0.1	-0.4	-0.1	0.0
Apparel manufacturing.....	315	4.423	111.8	111.7	-0.3	-0.2	-0.1	-0.1	-0.1
Leather and allied product manufacturing.....	316	1.928	124.5	124.8	0.9	0.2	0.0	0.1	0.2
Manufactured goods, part 2.....	32	17.399	119.9	118.1	-13.5	-0.2	-0.9	-2.3	-1.5
Wood product manufacturing.....	321	0.717	112.9	110.1	-9.8	1.2	1.2	-2.3	-2.5
Paper manufacturing.....	322	1.101	107.0	107.0	-3.7	-0.6	-0.5	-0.8	0.0
Petroleum and coal products manufacturing.....	324	2.567	88.4	82.1	-47.4	-1.4	-3.8	-10.3	-7.1
Chemical manufacturing.....	325	9.611	132.8	131.9	-3.6	-0.1	-0.3	-0.8	-0.7
Plastics and rubber products manufacturing.....	326	2.208	118.9	118.9	-2.4	-0.2	-0.5	0.0	0.0
Nonmetallic mineral product manufacturing.....	327	0.989	130.5	130.0	-0.3	0.6	-0.2	-0.3	-0.4
Manufactured goods, part 3.....	33	60.529	104.5	104.4	-3.2	-0.1	-0.3	-0.5	-0.1
Primary metal manufacturing.....	331	3.787	129.6	128.2	-19.7	-1.3	-2.8	-3.6	-1.1
Fabricated metal product manufacturing.....	332	3.050	125.7	125.5	-1.7	0.0	-0.2	-0.2	-0.2
Machinery manufacturing.....	333	7.279	118.4	118.8	-1.9	0.1	-0.3	-0.2	0.3
Computer and electronic product manufacturing.....	334	17.862	77.7	77.5	-2.6	-0.1	-0.1	-0.3	-0.3
Electrical equipment, appliance, and component manufacturing.....	335	4.728	116.7	117.0	-1.9	-0.1	-0.5	-0.2	0.3
Transportation equipment manufacturing.....	336	16.688	110.1	110.1	-1.2	-0.1	0.1	-0.2	0.0
Furniture and related product manufacturing.....	337	1.600	115.8	115.7	-0.9	0.1	-0.1	-0.2	-0.1
Miscellaneous manufacturing.....	339	5.535	119.5	119.4	-2.2	0.0	-0.2	-0.3	-0.1

¹ Relative importance figures are based on 2013 trade values.

NOTES: Data may be revised in each of the three months after original publication.

Dash = Not available

Table 4. U.S. export price indexes and percent changes for selected categories of goods: September 2014 to September 2015

[December 2005=100, unless otherwise noted]

Description	NAICS	Relative importance Aug. 2015 ¹	Index		Percent change				
			Aug. 2015	Sept. 2015	Annual	Monthly			
					Sept. 2014 to Sept. 2015	May 2015 to June 2015	June 2015 to July 2015	July 2015 to Aug. 2015	Aug. 2015 to Sept. 2015
Nonmanufactured articles.....		6.352	129.8	126.7	-14.6	-2.2	2.8	-3.9	-2.4
Agriculture, forestry, fishing and hunting.....	11	4.171	159.9	156.3	-11.2	-2.0	3.8	-5.2	-2.3
Crop production.....	111	3.935	166.1	162.2	-11.3	-1.3	3.7	-5.2	-2.3
Mining.....	21	2.181	72.5	70.7	-19.9	-2.5	1.0	-1.6	-2.5
Mining (except oil and gas).....	212	1.154	83.8	82.7	-15.3	-2.2	-2.3	-3.2	-1.3
Manufactured articles.....		92.212	113.2	112.7	-6.3	-0.2	-0.4	-1.2	-0.4
Manufactured goods, part 1.....	31	6.904	137.0	136.8	-12.3	-1.4	-1.1	-0.4	-0.1
Food manufacturing.....	311	4.699	154.0	153.9	-15.4	-1.7	-1.3	-0.5	-0.1
Beverage and tobacco product manufacturing.....	312	0.590	110.5	109.0	-1.4	-3.0	-0.5	-0.5	-1.4
Manufactured goods, part 2.....	32	24.085	111.4	109.5	-16.3	-0.2	-1.1	-3.3	-1.7
Paper manufacturing.....	322	1.871	121.9	122.4	-2.3	0.2	0.2	-1.8	0.4
Petroleum and coal products manufacturing.....	324	5.055	97.4	91.7	-42.4	-0.3	-3.2	-10.4	-5.9
Chemical manufacturing.....	325	13.271	118.8	117.6	-8.2	-0.2	-0.7	-1.3	-1.0
Plastics and rubber products manufacturing.....	326	2.249	117.1	117.1	-1.8	-0.3	-0.4	-0.5	0.0
Nonmetallic mineral product manufacturing.....	327	0.832	112.3	112.2	0.2	0.2	-0.1	0.0	-0.1
Manufactured goods, part 3.....	33	61.223	111.7	111.7	-1.0	0.0	-0.2	-0.4	0.0
Primary metal manufacturing.....	331	4.571	132.2	133.6	-10.0	-0.6	-1.4	-3.9	1.1
Fabricated metal product manufacturing...	332	3.059	129.8	129.6	1.3	-0.1	0.1	0.5	-0.2
Machinery manufacturing.....	333	11.675	125.4	125.5	1.2	0.1	-0.1	0.1	0.1
Computer and electronic product manufacturing.....	334	14.369	85.4	85.3	-2.4	0.0	-0.1	-0.4	-0.1
Electrical equipment, appliance, and component manufacturing.....	335	3.770	113.8	113.3	-1.2	-0.4	-0.4	-0.2	-0.4
Transportation equipment manufacturing..	336	17.738	121.6	121.5	1.3	0.1	0.0	0.0	-0.1
Furniture and related product manufacturing (Dec. 2011=100).....	337	0.387	109.5	110.1	1.3	-0.5	0.3	0.1	0.5
Miscellaneous manufacturing.....	339	5.654	123.1	123.0	-1.8	0.6	-0.2	-0.2	-0.1

¹ Relative importance figures are based on 2013 trade values.

NOTES: Data may be revised in each of the three months after original publication.

Dash = Not available

Table 5. U.S. import price indexes and percent changes for selected categories of goods: September 2014 to September 2015

[2000=100, unless otherwise noted]

Description	Harmonized system	Relative importance Aug. 2015 ¹	Index		Percent change				
			Aug. 2015	Sept. 2015	Annual	Monthly			
					Sept. 2014 to Sept. 2015	May 2015 to June 2015	June 2015 to July 2015	July 2015 to Aug. 2015	Aug. 2015 to Sept. 2015
Live animals; animal products.....	I	1.369	187.0	184.5	-9.3	-0.7	-0.5	1.5	-1.3
Meat and edible meat offal.....	02	0.327	239.8	237.8	-13.4	-2.1	1.2	1.0	-0.8
Fish and crustaceans, molluscs and other aquatic invertebrates.....	03	0.700	130.5	128.8	-8.1	-1.7	-0.6	3.2	-1.3
Vegetable products.....	II	1.968	199.2	203.6	2.0	-0.8	-0.3	-1.0	2.2
Edible vegetables, roots, and tubers.....	07	0.574	476.5	529.6	41.8	-1.3	2.2	1.4	11.1
Edible fruit and nuts; peel of citrus fruit or melons.....	08	0.483	94.2	91.7	-7.8	-3.0	1.6	-2.9	-2.7
Coffee, tea, mate and spices.....	09	0.366	233.6	230.2	-9.4	0.7	-3.9	0.2	-1.5
Animal or vegetable fats and oils (Dec. 2009=100).....	III	0.277	106.5	100.5	-9.4	0.5	-1.5	2.1	-5.6
Prepared foodstuffs, beverages, and tobacco.....	IV	2.846	161.1	160.2	-2.1	-0.1	0.5	-0.2	-0.6
Sugars and sugar confectionary (Dec. 2012=100).....	17	0.179	85.6	85.7	-5.4	-0.4	0.1	-5.5	0.1
Cocoa and cocoa preparations (Dec. 2009=100).....	18	0.259	113.1	116.0	-0.9	0.6	1.8	-0.2	2.6
Preparations of cereals, flour, starch or milk; bakers' wares (Dec. 2007=100).....	19	0.284	132.3	132.2	-0.7	0.0	0.3	-0.1	-0.1
Preparations of vegetables, fruit, nuts, or other parts of plants.....	20	0.335	156.3	152.3	-9.6	-1.6	0.1	0.3	-2.6
Beverages, spirits, and vinegar.....	22	1.073	128.1	128.2	0.2	0.1	0.5	-0.1	0.1
Mineral products.....	V	10.320	175.5	178.1	-44.8	1.7	-6.4	-11.1	1.5
Mineral fuels, oils and residuals, bituminous substances and mineral waxes.....	27	10.082	172.6	175.3	-45.2	1.7	-6.5	-11.3	1.6
Products of the chemical or allied industries.....	VI	8.803	147.5	146.3	-3.8	-0.3	0.1	-0.6	-0.8
Inorganic chemicals.....	28	0.663	292.2	289.0	-7.6	-1.5	-1.6	-0.3	-1.1
Organic chemicals.....	29	2.532	124.9	122.0	-9.8	-0.4	1.9	-0.9	-2.3
Pharmaceutical products.....	30	3.540	135.9	135.9	1.3	0.1	-0.4	-0.1	0.0
Fertilizers (Dec. 2009=100).....	31	0.358	101.7	100.3	-7.6	-2.3	-1.2	-7.3	-1.4
Tanning extracts; dye, pigments, varnish, paints & putty (Dec. 2011=100).....	32	0.208	98.6	98.7	-6.3	1.2	-0.9	0.0	0.1
Miscellaneous chemical products.....	38	0.561	90.3	90.3	-3.1	0.0	-0.1	0.4	0.0
Plastics and articles thereof; rubber and articles thereof.....	VII	3.414	139.9	139.7	-4.3	-0.1	-0.8	-0.7	-0.1
Plastics and articles thereof.....	39	2.210	143.4	143.2	-4.1	-0.3	-1.0	-1.0	-0.1
Rubber and articles thereof.....	40	1.204	135.3	135.1	-4.7	0.1	-0.6	0.0	-0.1
Raw hides, skins, leather, furskins, travel goods, etc.....	VIII	0.734	128.0	128.0	0.1	0.1	-0.1	0.0	0.0
Articles of leather; travel goods, bags, etc. of various materials.....	42	0.693	130.7	130.7	0.3	0.1	0.0	0.0	0.0
Wood, wood charcoal, cork, straw, basketware and wickerwork.....	IX	0.744	137.3	134.3	-9.2	1.1	1.2	-2.1	-2.2
Wood and articles of wood; wood charcoal (Dec. 2014=100).....	44	0.706	94.2	92.0	-	1.2	1.3	-2.2	-2.3
Woodpulp, recovered paper, and paper products.....	X	1.165	110.8	110.8	-2.2	-0.1	-0.4	-0.6	0.0
Paper and paperboard; articles of paper pulp, paper or paperboard.....	48	0.778	105.2	104.8	-2.1	-0.2	-0.5	-0.3	-0.4
Textile and textile articles.....	XI	5.560	114.2	114.1	-0.8	-0.1	-0.2	-0.1	-0.1

See footnotes at end of table.

Table 5. U.S. import price indexes and percent changes for selected categories of goods: September 2014 to September 2015 — Continued
 [2000=100, unless otherwise noted]

Description	Harmonized system	Relative importance Aug. 2015 ¹	Index		Percent change				
			Aug. 2015	Sept. 2015	Annual	Monthly			
					Sept. 2014 to Sept. 2015	May 2015 to June 2015	June 2015 to July 2015	July 2015 to Aug. 2015	Aug. 2015 to Sept. 2015
Articles of apparel and clothing accessories, knitted or crocheted.....	61	2.232	104.1	104.0	0.1	-0.1	-0.1	0.0	-0.1
Articles of apparel and clothing accessories, not knitted or crocheted.....	62	1.994	119.7	119.6	-0.6	-0.2	-0.3	0.0	-0.1
Made-up or worn textile articles.....	63	0.644	105.6	106.0	-1.7	0.0	-0.8	-0.2	0.4
Headgear, umbrellas, artificial flowers, etc...	XII	1.528	123.4	123.8	1.1	0.2	0.1	0.1	0.3
Footwear and parts of such articles.....	64	1.329	122.6	123.0	1.1	0.2	0.1	0.2	0.3
Stone, plaster, cement, asbestos, ceramics, glass etc.....	XIII	0.916	132.2	131.8	-1.0	0.2	-0.2	-0.3	-0.3
Ceramic products.....	69	0.273	137.8	137.8	-2.7	0.1	-0.5	-0.3	0.0
Glass and glassware.....	70	0.321	129.7	129.8	0.2	0.0	-0.1	0.1	0.1
Pearls, stones, precious metals, imitation jewelry, and coins.....	XIV	2.951	162.8	163.9	-9.9	-0.2	-1.8	-2.9	0.7
Base metals and articles of base metals. ...	XV	5.228	163.0	160.7	-12.9	-0.9	-1.5	-1.5	-1.4
Iron and steel.....	72	1.070	176.0	173.2	-22.7	-0.5	-1.8	-1.3	-1.6
Articles of iron or steel.....	73	1.687	146.7	145.4	-6.3	-0.7	-0.5	-0.5	-0.9
Copper and articles thereof.....	74	0.438	268.9	255.3	-22.1	2.4	-5.7	-4.9	-5.1
Aluminum and articles thereof.....	76	0.723	126.7	125.1	-13.6	-3.5	-1.4	-2.3	-1.3
Tools, implements, cutlery, spoons and forks, of base metal; parts thereof.....	82	0.452	128.0	127.6	-1.1	0.2	-0.4	-0.4	-0.3
Miscellaneous articles of base metal.....	83	0.529	138.2	138.1	-0.2	0.1	0.0	-0.1	-0.1
Machinery, electrical equipment, TV image and sound recorders, parts, etc.....	XVI	30.022	82.1	82.1	-2.5	-0.1	-0.2	-0.2	0.0
Machinery and mechanical appliances; parts thereof.....	84	15.245	87.2	87.4	-2.1	-0.1	-0.3	-0.2	0.2
Electrical machinery and equip, sound and TV recorders & reproducers, parts.....	85	14.777	77.3	77.1	-2.9	-0.1	-0.3	-0.1	-0.3
Vehicles, aircraft, vessels and associated transport equipment.....	XVII	14.006	114.6	114.6	-0.7	0.0	0.2	-0.2	0.0
Motor vehicles and their parts.....	87	12.653	113.2	113.3	-0.7	0.0	0.2	-0.2	0.1
Aircraft, spacecraft, and parts thereof (Dec. 2002=100).....	88	1.258	119.9	119.7	-0.4	0.0	0.0	0.0	-0.2
Optical, photo, measuring, medical & musical instruments; & timepieces.....	XVIII	3.947	103.3	103.3	-1.1	0.0	0.0	-0.4	0.0
Optical, photographic, measuring and medical instruments.....	90	3.618	100.1	100.1	-1.2	0.1	-0.2	-0.3	0.0
Clocks and watches and parts thereof.....	91	0.265	142.1	142.0	-0.8	0.1	0.6	-0.5	-0.1
Miscellaneous manufactured articles.....	XX	4.093	112.8	112.7	-1.1	-0.2	0.1	-0.1	-0.1
Furniture & stuffed furnishings; lamps & lighting fittings, nesoi; prefab bldgs.....	94	2.463	117.2	117.2	-1.0	-0.3	0.0	-0.1	0.0
Toys, games and sports equipment; parts and accessories thereof.....	95	1.368	104.8	104.7	-0.9	0.0	0.0	0.0	-0.1
Miscellaneous manufactured articles.....	96	0.262	134.2	134.3	-0.4	-0.1	0.1	0.0	0.1

¹ Relative importance figures are based on 2013 trade values.

NOTES: Data may be revised in each of the three months after original publication.

Dash = Not available

Table 6. U.S. export price indexes and percent changes for selected categories of goods: September 2014 to September 2015

[2000=100, unless otherwise noted]

Description	Harmoni- zied system	Relative importance Aug. 2015 ¹	Index		Percent change				
			Aug. 2015	Sept. 2015	Annual	Monthly			
					Sept. 2014 to Sept. 2015	May 2015 to June 2015	June 2015 to July 2015	July 2015 to Aug. 2015	Aug. 2015 to Sept. 2015
Live animals; animal products.....	I	1.798	186.4	187.6	-24.4	-3.7	-2.2	-1.5	0.6
Meat & edible meat offal (Dec. 2006=100)...	02	1.050	144.2	145.8	-25.5	-2.8	-2.9	-1.6	1.1
Fish and crustaceans, molluscs and other aquatic invertebrates.....	03	0.388	198.6	198.6	-6.7	-7.5	1.3	-3.9	0.0
Vegetable products.....	II	3.911	202.9	198.1	-12.4	-2.0	3.4	-4.8	-2.4
Edible fruit and nuts; peel of citrus fruit or melons.....	08	1.126	172.7	171.3	-0.9	-3.3	-2.3	1.0	-0.8
Cereals.....	10	0.945	184.0	181.6	-17.3	0.9	8.4	-12.7	-1.3
Oilseeds and misc. grains, seeds, fruits, plants, straw and fodder.....	12	1.426	208.8	193.8	-21.1	-3.5	6.4	-4.1	-7.2
Animal or vegetable fats and oils (Dec. 2009=100).....	III	0.200	93.6	92.5	-13.8	3.8	0.2	-5.4	-1.2
Prepared foodstuffs, beverages, and tobacco.....	IV	2.964	153.1	152.1	-6.9	-1.3	-0.2	0.1	-0.7
Preparations of vegetables, fruit, nuts or other parts of plants (Dec. 2009=100)....	20	0.409	118.2	118.3	0.5	-0.3	0.2	-0.1	0.1
Beverages, spirits, and vinegar (Dec. 2008=100).....	22	0.522	110.4	108.5	-2.0	1.4	-3.3	1.8	-1.7
Residues and waste from the food industries; prepared animal feed.....	23	0.740	218.6	210.8	-13.0	-3.8	1.7	0.2	-3.6
Mineral products.....	V	7.289	190.0	181.1	-37.1	-1.3	-2.3	-8.0	-4.7
Ores, slag and ash (Dec. 2012=100).....	26	0.445	78.2	77.6	-20.7	-7.4	-4.3	-2.7	-0.8
Mineral fuels, oils and residuals, bituminous substances and mineral waxes.....	27	6.658	183.4	174.1	-38.7	-0.9	-2.2	-8.5	-5.1
Products of the chemical or allied industries.....	VI	10.930	141.6	140.1	-6.5	-0.1	-0.5	-1.1	-1.1
Inorganic chemicals.....	28	0.913	185.1	184.9	8.2	-0.6	0.2	0.1	-0.1
Organic chemicals.....	29	2.934	143.0	136.6	-18.2	0.1	-1.5	-1.5	-4.5
Pharmaceutical products.....	30	2.609	110.8	110.3	-4.4	0.5	-0.2	-0.5	-0.5
Essential oils and resinoids; perfumery cosmetic or toilet preparations.....	33	0.803	136.3	135.6	1.8	-0.1	-0.3	-0.1	-0.5
Soap; lubricants; waxes, polishing or scouring products; candles, pastes.....	34	0.482	112.7	113.0	-4.1	-0.2	0.9	-2.2	0.3
Miscellaneous chemical products.....	38	1.868	147.3	150.8	-1.4	-1.0	-0.5	-2.6	2.4
Plastics and articles thereof; rubber and articles thereof.....	VII	5.187	141.2	141.0	-6.6	-0.5	-0.6	-0.7	-0.1
Plastics and articles thereof.....	39	4.234	136.9	137.0	-6.2	-0.6	-0.4	-0.8	0.1
Rubber and articles thereof.....	40	0.953	159.0	157.4	-8.2	0.2	-1.5	-0.3	-1.0
Raw hides, skins, leather, furskins, travel goods, etc.....	VIII	0.389	127.7	128.6	-20.3	-1.3	-8.1	-0.7	0.7
Raw hides and skins other than furskins and leather (Dec.2014=100).....	41	0.220	75.4	76.8	-	-2.4	-13.1	-1.2	1.9
Wood, wood charcoal, cork, straw, baskets and wickerwork (Dec. 2014=100).....	IX	0.611	94.8	93.8	-	-0.6	-1.0	-1.3	-1.1
Woodpulp, recovered paper, and paper products.....	X	2.268	123.1	123.2	-1.7	0.2	1.1	-1.6	0.1
Woodpulp and recovered paper.....	47	0.627	122.9	123.4	-4.9	2.3	2.3	-4.9	0.4
Paper and paperboard; articles of paper pulp, paper or paperboard.....	48	1.217	122.5	122.3	-1.3	-0.6	-0.1	-0.2	-0.2
Printed material (Dec. 2014=100).....	49	0.424	101.6	101.6	-	-0.1	2.9	-0.3	0.0
Textile and textile articles.....	XI	1.813	122.3	121.9	-5.4	0.2	-0.1	0.2	-0.3

See footnotes at end of table.

Table 6. U.S. export price indexes and percent changes for selected categories of goods: September 2014 to September 2015 — Continued
 [2000=100, unless otherwise noted]

Description	Harmonized system	Relative importance Aug. 2015 ¹	Index		Percent change				
			Aug. 2015	Sept. 2015	Annual	Monthly			
					Sept. 2014 to Sept. 2015	May 2015 to June 2015	June 2015 to July 2015	July 2015 to Aug. 2015	Aug. 2015 to Sept. 2015
Cotton, including yarns and woven fabrics thereof.....	52	0.527	120.7	120.4	-8.4	1.1	1.8	-0.2	-0.2
Stone, plaster, cement, asbestos, ceramics, glass etc.....	XIII	0.833	122.2	122.1	1.7	0.2	-0.2	0.0	-0.1
Glass and glassware.....	70	0.429	98.9	98.8	0.2	0.0	-0.1	0.0	-0.1
Pearls, stones, precious metals, imitation jewelry, and coins.....	XIV	4.610	223.1	226.0	-8.9	-0.4	-1.3	-3.3	1.3
Base metals and articles of base metals. ...	XV	5.122	148.1	146.2	-10.6	0.4	-1.9	-1.4	-1.3
Iron and steel.....	72	1.152	152.4	148.1	-19.9	5.5	-4.6	-3.5	-2.8
Copper and articles thereof.....	74	0.466	168.9	167.6	-25.5	-4.0	-5.0	-7.1	-0.8
Aluminum and articles thereof.....	76	0.848	110.3	106.6	-15.4	-2.4	-2.5	-2.0	-3.4
Miscellaneous articles of base metal.....	83	0.339	148.5	148.6	1.0	0.0	0.5	0.1	0.1
Machinery, electrical equipment, TV image and sound recorders, parts, etc.....	XVI	29.333	96.8	96.7	-0.6	0.0	-0.2	-0.1	-0.1
Machinery and mechanical appliances; parts thereof.....	84	17.661	113.2	113.2	0.3	-0.1	-0.2	-0.1	0.0
Electrical machinery and equipment and parts and accessories thereof.....	85	11.672	79.0	78.7	-2.1	0.0	-0.1	-0.3	-0.4
Vehicles, aircraft, vessels and associated transport equipment.....	XVII	14.803	130.9	131.0	0.8	0.0	0.1	0.0	0.1
Motor vehicles and their parts.....	87	9.198	115.1	115.0	-0.1	0.0	0.0	0.1	-0.1
Optical, photo, measuring, medical & musical instruments; & timepieces.....	XVIII	6.305	107.5	107.5	-0.5	0.9	-0.1	-0.2	0.0
Miscellaneous manufactured articles.....	XX	1.501	110.6	111.1	0.5	-0.3	0.2	-0.8	0.5
Furniture; stuffed furnishings; lamps and lighting fittings nesoi;.....	94	0.859	123.5	123.8	1.4	-0.6	0.2	-0.3	0.2
Toys, games and sports equipment; parts and accessories thereof.....	95	0.487	89.6	89.6	0.1	0.0	0.1	0.0	0.0

¹ Relative importance figures are based on 2013 trade values.

NOTES: Data may be revised in each of the three months after original publication.

Dash = Not available

Table 7. U.S. import price indexes and percent changes by locality of origin: September 2014 to September 2015

[2000=100, unless otherwise noted]

Description	Relative importance Aug. 2015 ¹	Index		Percent change				
		Aug. 2015	Sept. 2015	Annual	Monthly			
				Sept. 2014 to Sept. 2015	May 2015 to June 2015	June 2015 to July 2015	July 2015 to Aug. 2015	Aug. 2015 to Sept. 2015
Industrialized Countries²	100.000	119.8	119.1	-9.2	0.3	-1.0	-1.2	-0.6
Nonmanufactured articles.....	8.107	138.8	143.6	-37.3	5.3	-7.8	-7.0	3.5
Manufactured articles.....	91.478	117.9	116.8	-5.2	-0.1	-0.3	-0.8	-0.9
Other Countries³	100.000	121.5	121.5	-10.9	0.0	-1.0	-1.5	0.0
Nonmanufactured articles.....	10.855	195.8	202.6	-38.3	0.4	-5.3	-7.8	3.5
Manufactured articles.....	88.932	104.7	104.3	-4.7	0.0	-0.4	-0.6	-0.4
Canada	100.000	124.4	123.9	-17.6	1.4	-2.3	-2.7	-0.4
Nonmanufactured articles.....	22.651	132.9	137.8	-37.8	5.3	-8.0	-7.2	3.7
Manufactured articles.....	76.682	126.4	124.4	-8.1	0.2	-0.3	-1.3	-1.6
European Union⁴	100.000	134.5	133.1	-3.1	0.2	0.0	-0.3	-1.0
Manufactured articles.....	99.374	130.9	129.6	-3.0	0.3	-0.1	-0.3	-1.0
France (Dec. 2003=100)	100.000	121.7	121.7	-1.1	0.3	-0.1	-0.1	0.0
Germany (Dec. 2003=100)	100.000	116.6	116.7	-1.4	0.4	0.0	-0.3	0.1
United Kingdom (Dec. 2003=100)	100.000	121.4	121.6	-7.7	0.1	-0.1	-0.2	0.2
Latin America⁵	100.000	144.6	144.6	-14.2	-0.3	-1.5	-2.4	0.0
Nonmanufactured articles.....	17.607	209.0	216.9	-36.7	-1.2	-5.6	-9.5	3.8
Manufactured articles.....	82.017	123.2	122.1	-5.9	-0.1	-0.4	-0.8	-0.9
Mexico (Dec. 2003=100)	100.000	128.8	128.7	-8.3	0.1	-0.8	-1.5	-0.1
Nonmanufactured articles (Dec. 2008=100).....	9.555	114.5	116.7	-37.3	1.2	-4.6	-12.1	1.9
Manufactured articles (Dec. 2008=100).....	90.132	90.2	90.0	-3.0	0.0	-0.4	-0.2	-0.2
Pacific Rim (Dec. 2003=100)⁶	100.000	99.9	99.8	-2.3	-0.2	-0.2	-0.2	-0.1
China (Dec. 2003=100)	100.000	102.6	102.4	-1.3	-0.1	-0.2	-0.1	-0.2
Japan	100.000	95.3	95.3	-3.2	-0.5	-0.3	-0.3	0.0
Asian NICs⁷	100.000	86.0	86.3	-2.9	-0.8	-0.3	0.1	0.3
ASEAN (Dec. 2003=100)⁸	100.000	98.9	98.5	-3.4	-0.4	-0.2	0.6	-0.4
Asia Near East (Dec. 2003=100)⁹	100.000	165.9	170.1	-34.7	1.4	-4.2	-6.1	2.5

¹ Relative importance figures are based on 2013 trade values.

² Western Europe, Canada, Japan, Australia, New Zealand and South Africa.

³ Eastern Europe, Latin America, OPEC countries, and other countries in Asia, Africa and the Western Hemisphere.

⁴ European Union countries.

⁵ Mexico, Central America, South America and the Caribbean.

⁶ China, Japan, Australia, Brunei, Indonesia, Macao, Malaysia, New Zealand, Papua New Guinea, Philippines and the Asian Newly Industrialized Countries.

⁷ Asian Newly Industrialized Countries - Hong Kong, Singapore, South Korea and Taiwan.

⁸ Association of Southeast Asian Nations - Brunei, Cambodia, Indonesia, Laos, Malaysia, Myanmar, Philippines, Singapore, Thailand and Vietnam.

⁹ Bahrain, Iran, Iraq, Israel, Jordan, Kuwait, Lebanon, Oman, Qatar, Saudi Arabia, Syria, United Arab Emirates and Yemen.

NOTES: Data may be revised in each of the three months after original publication.

Regions are not mutually exclusive.

Dash = Not available

Table 8. U.S. international price indexes and percent changes for selected transportation services: September 2014 to September 2015

[2000=100, unless otherwise noted]

Description	Relative importance Aug. 2015 ¹	Index		Percent change				
		Aug. 2015	Sept. 2015	Annual	Monthly			
				Sept. 2014 to Sept. 2015	May 2015 to June 2015	June 2015 to July 2015	July 2015 to Aug. 2015	Aug. 2015 to Sept. 2015
Air Freight								
Import Air Freight	100.000	159.8	156.6	-10.4	-0.8	-4.2	-2.0	-2.0
Europe (Dec. 2003=100).....	23.824	146.1	145.3	-17.6	3.0	-0.8	-1.7	-0.5
Asia.....	64.419	142.3	138.0	-9.0	-2.1	-6.0	-2.3	-3.0
Export Air Freight	100.000	157.3	156.1	-2.1	0.3	0.4	-0.8	-0.8
Europe (Dec. 2006=100).....	36.699	150.2	149.1	4.3	0.3	0.5	-0.9	-0.7
Inbound Air Freight	100.000	150.5	149.3	-9.2	-0.3	-2.8	-2.2	-0.8
Europe (Dec. 2003=100).....	26.354	138.3	137.7	-12.6	2.3	0.1	-1.6	-0.4
Asia.....	59.839	134.9	132.2	-10.2	-1.4	-4.5	-2.9	-2.0
Outbound Air Freight	100.000	149.4	148.7	-2.8	-0.3	1.5	-1.0	-0.5
Europe (Dec. 2003=100).....	30.954	158.1	158.1	-8.0	0.0	0.3	-0.3	0.0
Asia.....	44.838	143.6	142.9	-1.4	0.1	3.1	-1.9	-0.5
Air Passenger Fares								
Import Air Passenger Fares	100.000	187.7	179.3	-7.2	8.9	-4.1	-5.1	-4.5
Europe.....	41.063	205.1	213.1	-1.1	6.4	-6.9	-8.9	3.9
Asia.....	23.687	146.6	135.3	-8.3	9.1	-3.2	-4.6	-7.7
Latin America/Caribbean.....	9.410	164.0	148.9	-9.1	0.3	3.1	-0.4	-9.2
Export Air Passenger Fares	100.000	177.2	158.1	-16.3	3.4	3.6	1.5	-10.8
Europe.....	28.628	214.3	213.7	-8.6	9.2	4.0	-10.1	-0.3
Asia.....	31.408	173.4	133.2	-14.8	0.8	0.4	20.6	-23.2
Latin America/Caribbean.....	21.560	172.1	155.7	-15.3	3.7	2.1	-1.8	-9.5

¹ Relative importance figures are based on 2013 trade values.

NOTES: Data may be revised in each of the three months after original publication.

Dash = Not available

TECHNICAL NOTE

Import and Export Merchandise and Services Price Indexes -- All indexes use a modified Laspeyres formula and are not seasonally adjusted. Price indexes are reweighted annually, with a two-year lag in the weights. Published series use a base year of 2000=100 where possible. More detailed index series and additional information may be obtained at <http://www.bls.gov/mxp>, or by calling (202) 691-7101.

Merchandise Goods Classification Systems -- The merchandise price indexes are published using three classification systems. Items are classified by end use according to the Bureau of Economic Analysis Classification System, by industry according to the North American Industry Classification System (NAICS), and by product category according to the Harmonized System (HS). While classification by end use and product category are self-explanatory, some notes are in order for classifying items by industry. In the NAICS imports and exports tables, items are classified by output industry, not input industry. As an example, NAICS import index 326 (plastics and rubber products manufacturing) include outputs such as manufactured plastic rather than inputs such as petroleum. The NAICS classification structure also matches the classification system used by the PPI (Producer Price Index) to produce the NAICS primary products indexes.

Import Price Indexes -- Products have been classified by the Harmonized Tariff Schedule of the United States Annotated (TSUSA). Import prices are based on U.S. dollar prices paid by the U.S. importer. The prices are generally either "free on board" (f.o.b.) foreign port or "cost, insurance, and freight" (c.i.f.) U.S. port transaction prices, depending on the practices of the individual industry. The index for crude petroleum is calculated from data collected by the U.S. Department of Energy.

Export Price Indexes -- Products have been classified by the Harmonized Schedule B classification system of the U.S. Bureau of the Census. The prices used are generally either "free alongside ship" (f.a.s.) factory or "free on board" (f.o.b.) transaction prices, depending on the practices of the individual industry. Prices used in the grain index, excluding rice, are obtained from the U.S. Department of Agriculture.

Services Price Indexes -- Starting in September 2008 the Import Air Passenger Fares Indexes represent changes in the average revenue per passenger received by foreign carriers from U.S. residents and are calculated from data obtained from an airline consulting service. These data include tickets sold by travel agencies and travel websites. Tickets sold directly by the airlines are excluded, as are frequent flyer tickets generally. Starting in January 2008 the Export Air Passenger Fares Indexes represent changes in the average revenue per passenger received by U.S. carriers from foreign residents and are calculated from data collected directly from airlines. These data include frequent flyer tickets and those sold by consolidators. Taxes and fees are included in the Import Air Passenger Fares Index and excluded from the Export Air Passenger Fares Index. The Air Freight Indexes are calculated from data collected directly from airlines. These data exclude mail and passenger baggage. The scope of the service being priced is the movement of freight from airport to airport only, and does not include any ground transportation or port service. The Air Freight Indexes are presented using two definitions: Balance of Payments (which represent transactions between U.S. and foreign residents) and International (which represent transactions inbound to and outbound from the U.S.). Fact sheets specifying detailed information for each services industry are available at <http://www.bls.gov/mxp> under "MXP Publications."

Import Indexes by Locality of Origin -- Prices used in these indexes are a subset of the data collected for the Import Price Indexes. Beginning with January 2002, the indexes are defined by locality of origin using a nomenclature based upon the North American Industry Classification System (NAICS). Nonmanufactured goods are defined as NAICS 11 and 21 and manufactured goods are defined as NAICS 31-33.

Revision Policy -- To reflect the availability of late reports and corrections by respondents, monthly data may be revised in each of the three months after original publication. After three months, no further data revisions take place. So, for example, data released in the January release will be subject to revision in the releases for February, March, and April.

Uses of the Data -- The primary use of the indexes is to deflate trade statistics, notably the foreign trade sector of the National Income and Product Accounts constructed by the Department of Commerce. Other published indexes are useful for general market analysis. For trade in international services, Balance of Payments indexes are used for deflating National Income and Product Accounts, while International indexes are more appropriate for market analysis. Merchandise and services indexes also can be used to study U.S. competitiveness and to compute price elasticities, and the merchandise import indexes by country or region of origin are useful in terms of trade analysis.

E-Mail Subscription -- The U.S. Import and Export Price Indexes news release is available through an e-mail subscription service at (<http://www.bls.gov/bls/list.htm>).

Additional Information -- More detailed data are available on the Import/Export Price Indexes home page at (<http://www.bls.gov/mxp>). For technical assistance in using the BLS Internet site, send e-mail to (labstat.helpdesk@bls.gov). For Import/Export Price Index data requests, send e-mail to (mxpinfo@bls.gov).

Information from this release will be made available to sensory impaired individuals upon request. Voice phone: 202-691-5200; Federal Relay Service: 1-800-877-8339.