



Life, physical, and social science workers

This occupational group includes agricultural scientists, food scientists, biological scientists, medical scientists, astronomers, physicists, chemists, hydrologists, economists, survey researchers, psychologists, sociologists, urban planners, anthropologists, archeologists, geographers, historians, political scientists, and nuclear technicians.

Cognitive and mental requirements

The qualifications that workers need to use judgment, make decisions, interact with others, and adapt to changes in jobs.

In 2023, more than basic people skills were required for 90.3 percent of life, physical, and social science workers, and basic people skills were required for 9.7 percent.

Table 1. Percentage of life, physical, and social science workers with cognitive and mental requirements, 2023

Requirement	Yes	No
Pace: Pause control	82.6	17.4
Interaction with general public	69.7	30.3
Working around crowds	0.6	99.4
Telework	16.6	83.4
Work review: Supervising others	16.0	84.0
Work review: Presence of supervisor	49.5	50.5

Source: U.S. Bureau of Labor Statistics, Occupational Requirements Survey

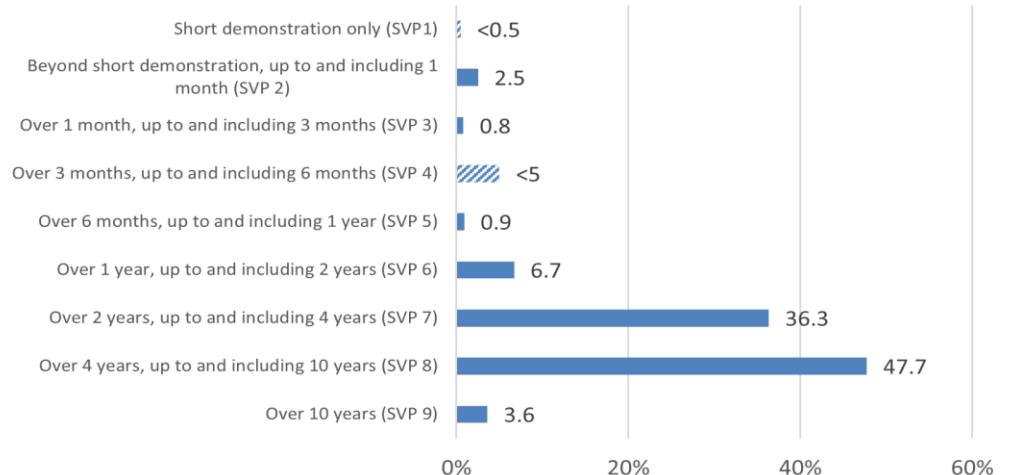
Education, training, and experience requirements

The minimum level of formal education required, credentials necessary, on-the-job training, and prior work experience necessary for average performance in jobs.

In 2023, credentials were required for 51.2 percent of life, physical, and social science workers. Prior work experience was required for 71.1 percent and on-the-job training was required for 71.3 percent.

A bachelor's degree was required for 52.0 percent of life, physical, and social science workers.

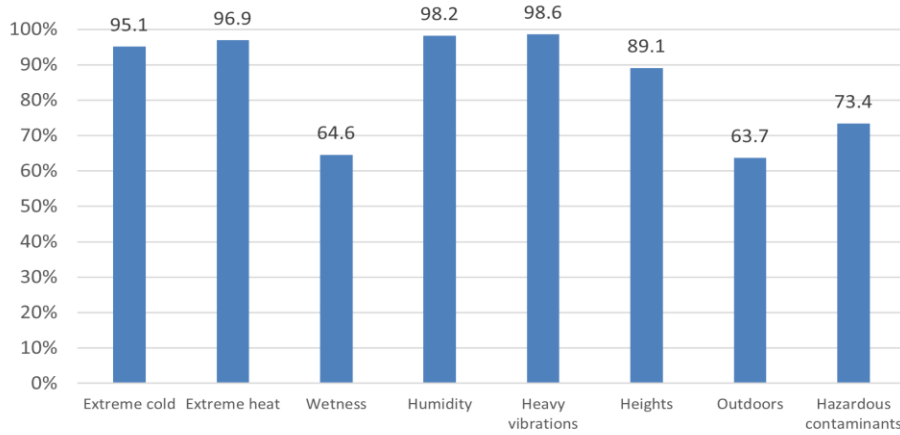
Chart 1. Percentage of life, physical, and social science workers by specific preparation time (SVP) level, 2023



Note: Striped bars represent range estimates where precise value is unpublished.
Source: U.S. Bureau of Labor Statistics, Occupational Requirements Survey



Chart 2. Percentage of life, physical, and social science workers without exposure to environmental conditions, 2023



Note: Striped bars represent range estimates where precise value is unpublished.
Source: U.S. Bureau of Labor Statistics, Occupational Requirements Survey

Environmental conditions

The various tangible or concrete hazards or difficulties that are in the vicinity of where jobs' critical tasks are performed.

In 2023, 95.1 percent of life, physical, and social science workers were not exposed to extreme cold, and 96.9 percent were not exposed to extreme heat. Wetness was not present for 64.6 percent, 98.6 percent were not exposed to heavy vibrations, and 63.7 percent were not exposed to the outdoors.

Physical demands

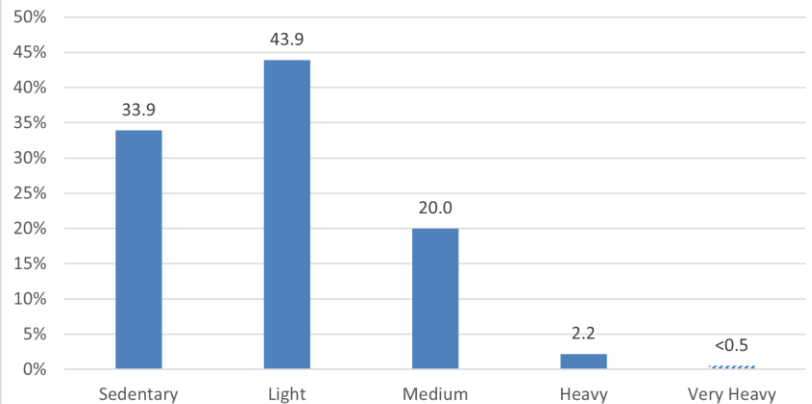
Refer to the physical activities required to perform tasks in jobs. The presence and, in some cases, duration of these activities are published.

In 2023, keyboarding was required for 99.1 percent of life, physical, and social science workers and was not required for 0.9 percent. For 1.1 percent of workers, keyboarding was seldom performed, for 63.1 percent keyboarding occurred occasionally, 34.0 percent frequently, and for 1.0 percent keyboarding occurred constantly.

Performing work in low postures was required for 46.6 percent of life, physical, and social science workers and was not required for 53.4 percent.

The choice to sit or stand when performing critical tasks was available to 71.5 percent of life, physical, and social science workers. On average, workers spent 62.7 percent of the workday sitting and 37.3 percent of the workday standing.

Chart 3. Percentage of life, physical, and social science workers by strength level requirements, 2023



Note: Striped bars represent range estimates where precise value is unpublished.
Source: U.S. Bureau of Labor Statistics, Occupational Requirements Survey

Table 2. Percentage of life, physical, and social science workers with physical demands, 2023

Requirement	Yes	No
Choice of sitting or standing	71.5	28.5
Driving	38.7	61.3
Climbing structure-related ramps or stairs	23.5	76.5

Source: U.S. Bureau of Labor Statistics, Occupational Requirements Survey