



### Mental health and substance abuse social workers

Assess and treat individuals with mental, emotional, or substance abuse problems, including abuse of alcohol, tobacco, and/or other drugs. Activities may include individual and group therapy, crisis intervention, case management, client advocacy, prevention, and education.

### Cognitive and mental requirements

The qualifications that workers need to use judgment, make decisions, interact with others, and adapt to changes in jobs.

In 2023, verbal interactions were required constantly (every few minutes) for 43.5 percent of mental health and substance abuse social workers, and were required not constantly, but more than once per hour for 55.6 percent.

**Table 1. Percentage of mental health and substance abuse social workers with cognitive and mental requirements, 2023**

Requirement	Yes	No
<b>Pace: Pause control</b>	60.7	39.3
<b>Interaction with general public</b>	>99.5	<0.5
<b>Working around crowds</b>	<5	>95
<b>Telework</b>	14.8	85.2
<b>Work review: Supervising others</b>	12.8	87.2
<b>Work review: Presence of supervisor</b>	33.6	66.4

Source: U.S. Bureau of Labor Statistics, Occupational Requirements Survey

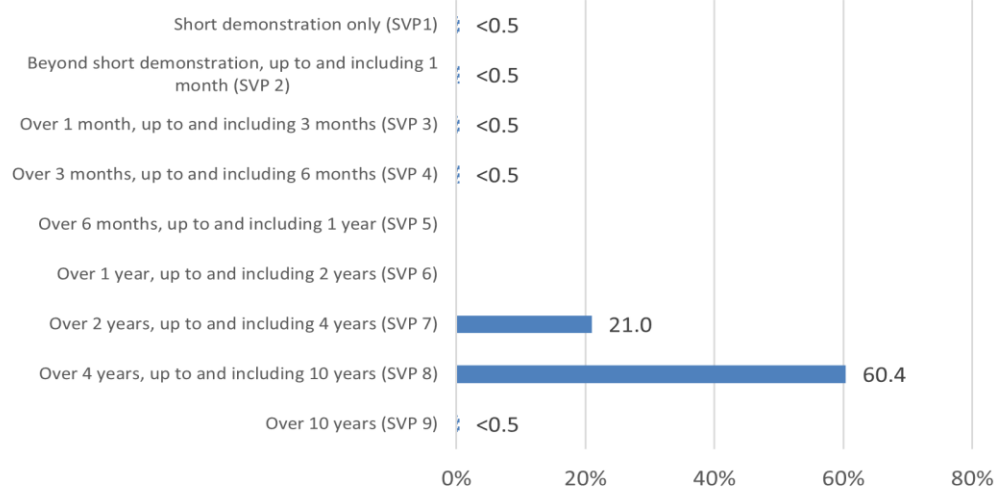
### Education, training, and experience requirements

The minimum level of formal education required, credentials necessary, on-the-job training, and prior work experience necessary for average performance in jobs.

In 2023, credentials were required for 94.3 percent of mental health and substance abuse social workers. Prior work experience was required for 76.5 percent and on-the-job training was required for 69.2 percent.

A master's degree was required for 62.8 percent of mental health and substance abuse social workers.

**Chart 1. Percentage of mental health and substance abuse social workers by specific preparation time (SVP) level, 2023**

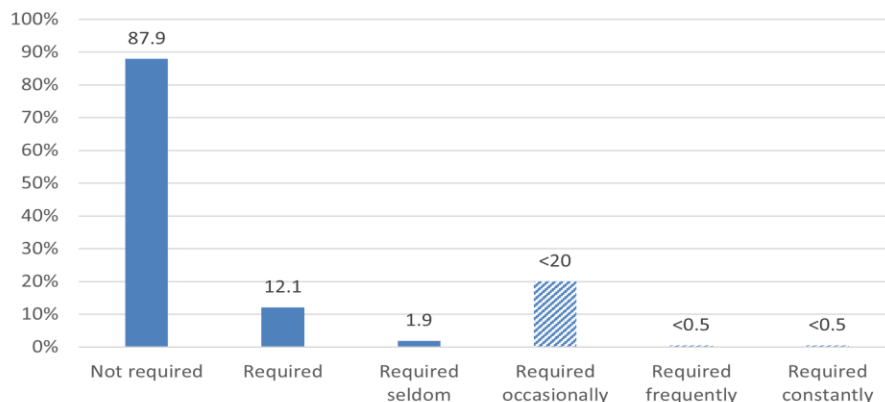


Note: Striped bars represent range estimates where precise value is unpublished.

Source: U.S. Bureau of Labor Statistics, Occupational Requirements Survey



**Chart 2. Percentage of mental health and substance abuse social workers with outdoor exposure and duration, 2023**



Note: Striped bars represent range estimates where precise value is unpublished.  
Source: U.S. Bureau of Labor Statistics, Occupational Requirements Survey

## Environmental conditions

The various tangible or concrete hazards or difficulties that are in the vicinity of where jobs' critical tasks are performed.

In 2023, greater than 99.5 percent of mental health and substance abuse social workers were not exposed to extreme cold, and greater than 99.5 percent were not exposed to extreme heat. Wetness was not present for 70.8 percent, greater than 99.5 percent were not exposed to heavy vibrations, and 87.9 percent were not exposed to the outdoors.

## Physical demands

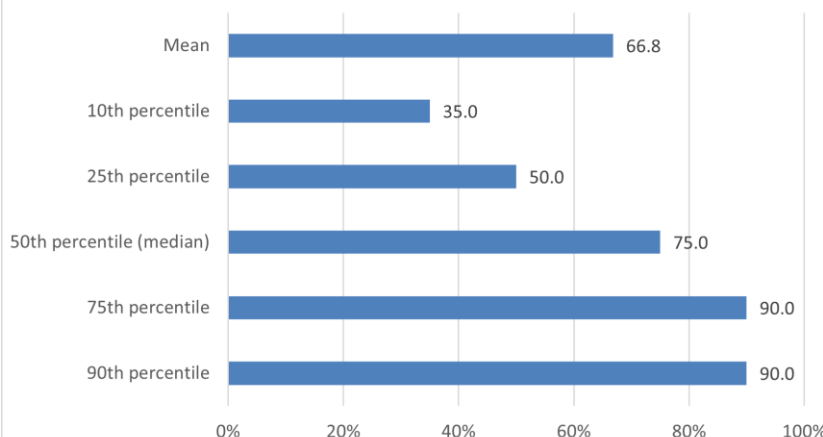
Refer to the physical activities required to perform tasks in jobs. The presence and, in some cases, duration of these activities are published.

In 2023, keyboarding was required for greater than 99.5 percent of mental health and substance abuse social workers and was not required for less than 0.5 percent. For less than 0.5 percent of workers, keyboarding was seldom performed, for 64.9 percent keyboarding occurred occasionally, 35.1 percent frequently, and for less than 0.5 percent keyboarding occurred constantly.

Performing work in low postures was required for 17.5 percent of mental health and substance abuse social workers and was not required for 82.5 percent.

On average, mental health and substance abuse social workers spent 66.8 percent of the workday sitting and 33.2 percent of the workday standing.

**Chart 3. Mental health and substance abuse social workers by percent of workday sitting, 2023**



Source: U.S. Bureau of Labor Statistics, Occupational Requirements Survey

**Table 2. Percentage of mental health and substance abuse social workers with physical demands, 2023**

Requirement	Yes	No
Climbing structure-related ramps or stairs	41.7	58.3

Source: U.S. Bureau of Labor Statistics, Occupational Requirements Survey