

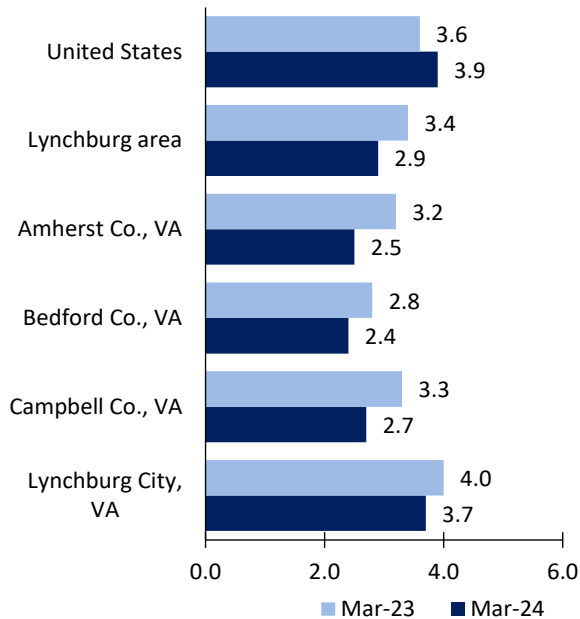
Lynchburg area Economic Summary

Updated May 03, 2024

This summary presents a sampling of economic information for the area; supplemental data are provided for regions and the nation. Subjects include **unemployment, employment, wages, prices, spending, and benefits**. All data are not seasonally adjusted and some may be subject to revision. Area definitions may differ by subject. For more area summaries and geographic definitions, see www.bls.gov/regions/economic-summaries.htm.

Unemployment rates for the nation and selected areas

Unemployment rates

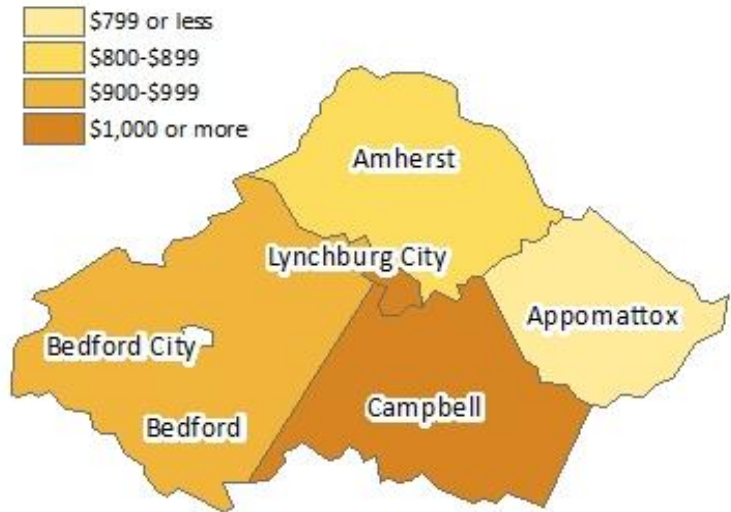


Source: U.S. BLS, Local Area Unemployment Statistics.

Average weekly wages for all industries by county

Lynchburg area, third quarter 2023

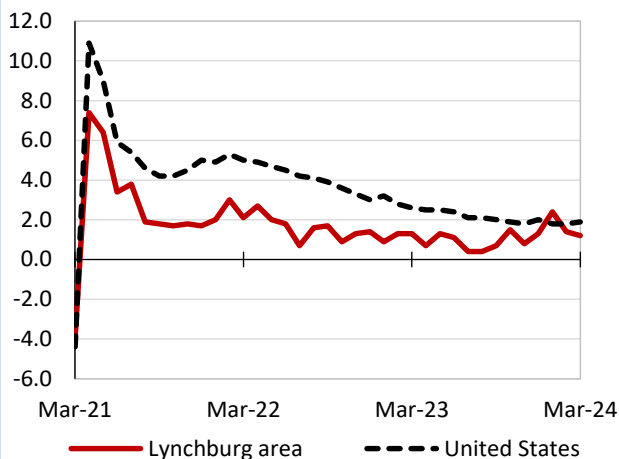
(U.S. = \$1,334; Area = \$1,008)



Source: U.S. BLS, Quarterly Census of Employment and Wages.

Over-the-year changes in employment on nonfarm payrolls and employment by major industry sector

12-month percent changes in employment



Source: U.S. BLS, Current Employment Statistics.

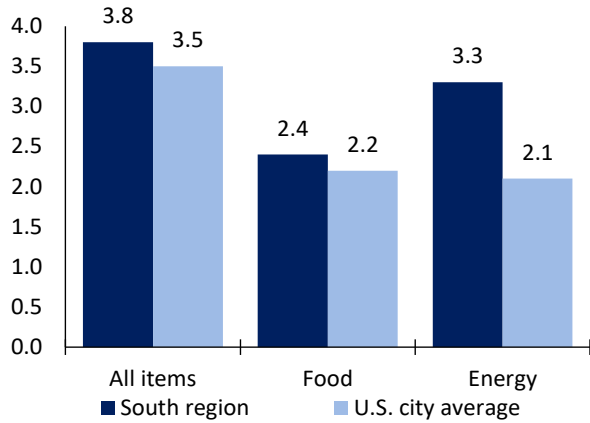
Lynchburg area employment (number in thousands)	Mar. 2024	Change from Mar. 2023 to Mar. 2024	
		Number	Percent
Total nonfarm	105.7	1.3	1.2
Mining, logging, and construction	6.2	0.1	1.6
Manufacturing	14.5	0.1	0.7
Trade, transportation, and utilities	18.7	-0.1	-0.5
Information	0.7	0.0	0.0
Financial activities	5.0	-0.1	-2.0
Professional and business services	10.7	-0.1	-0.9
Education and health services	20.5	0.7	3.5
Leisure and hospitality	11.2	0.1	0.9
Other services	4.6	0.1	2.2
Government	13.6	0.5	3.8

Source: U.S. BLS, Current Employment Statistics.



Over-the-year change in the prices paid by urban consumers for selected categories

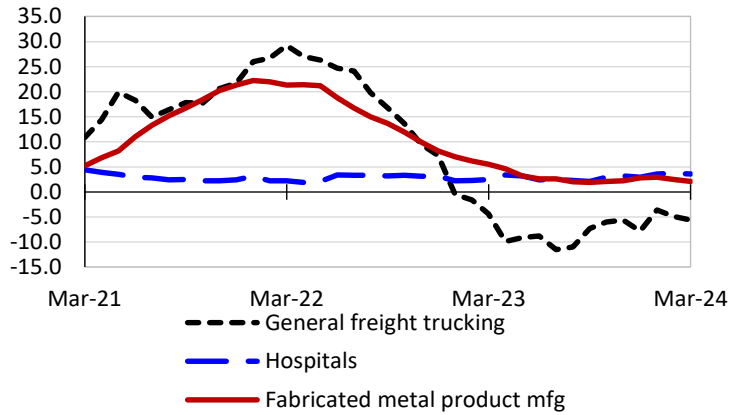
12-month percent change in CPI-U, March 2024



Source: U.S. BLS, Consumer Price Index.

Over-the-year changes in the selling prices received by producers for selected industries nationwide

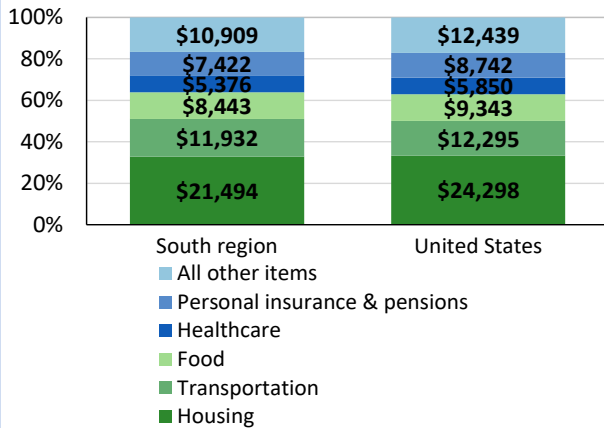
12-month percent changes in PPI



Source: U.S. BLS, Producer Price Index.

Average annual spending and percent distribution for selected categories

Average annual expenditures, United States and South region, 2022



Source: U.S. BLS, Consumer Expenditure Survey.

Average hourly wages for selected occupations

Occupation	Lynchburg area	United States
All occupations	\$25.94	\$31.48
Registered nurses	37.82	45.42
Machinists	29.67	26.25
Librarians and media collections specialists	27.41	32.97
Substance abuse, behavioral disorder, and mental health counselors	25.38	28.89
Sheet metal workers	24.77	30.90
Retail salespersons	15.24	17.64

Source: U.S. BLS, Occupational Employment and Wage Statistics, May 2023.

Employer costs per hour worked for wages and selected employee benefits by geographic division

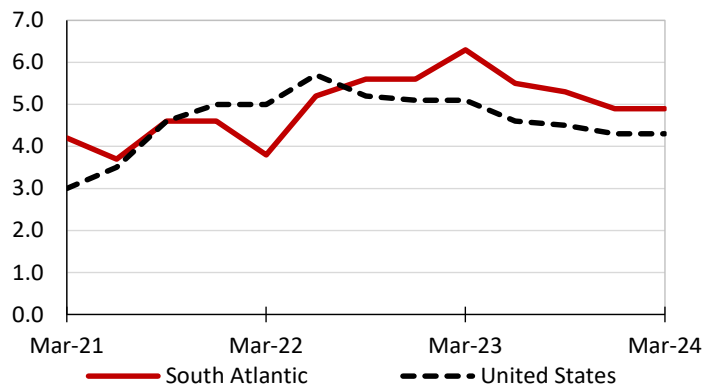
Private industry, December 2023	South Atlantic	United States
Total compensation	\$40.34	\$43.11
Wages and salaries	28.91	30.33
Total benefits	11.43	12.77
Paid leave	3.10	3.26
Vacation	1.61	1.67
Supplemental pay	1.43	1.71
Insurance	2.73	3.14
Retirement and savings	1.25	1.50
Legally required benefits	2.92	3.17

(1) The states that compose the South Atlantic census division are: DE, DC, FL, GA, MD, NC, SC, VA, and WV.

Source: U.S. BLS, Employer Costs for Employee Compensation.

Over-the-year changes in wages and salaries

12-month percent changes in ECI



Source: U.S. BLS, Employment Cost Index.

