

For release 10:00 a.m. (EDT) Wednesday, March 23, 2011

USDL-11-0395

Technical Information: (202) 691-5618 • dipsweb@bls.gov • www.bls.gov/lpc

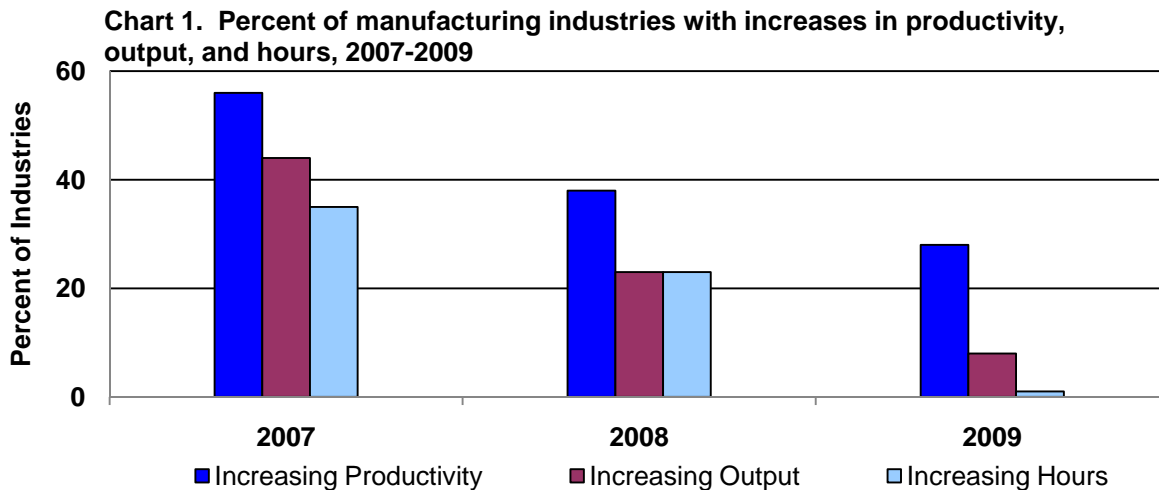
Media Contact: (202) 691-5902 • PressOffice@bls.gov

**PRODUCTIVITY AND COSTS BY INDUSTRY:
MANUFACTURING INDUSTRIES, 2009**

Labor productivity – defined as output per hour – rose in 28 percent of the 86 detailed manufacturing industries studied in 2009, the U.S. Bureau of Labor Statistics reported today. This was down from 38 percent of the detailed manufacturing industries in 2008 and 56 percent in 2007. **Unit labor costs**, which reflect the total labor costs required to produce a unit of output, declined in 14 percent of the industries in 2009.

Output and hours also rose in fewer industries in 2009 than in the previous two years. (See chart 1.) Output rose in 7 of the 86 industries in 2009, while hours increased in only 1. (See table 1.) Output and hours declined at double-digit rates in over 7 out of 10 industries studied.

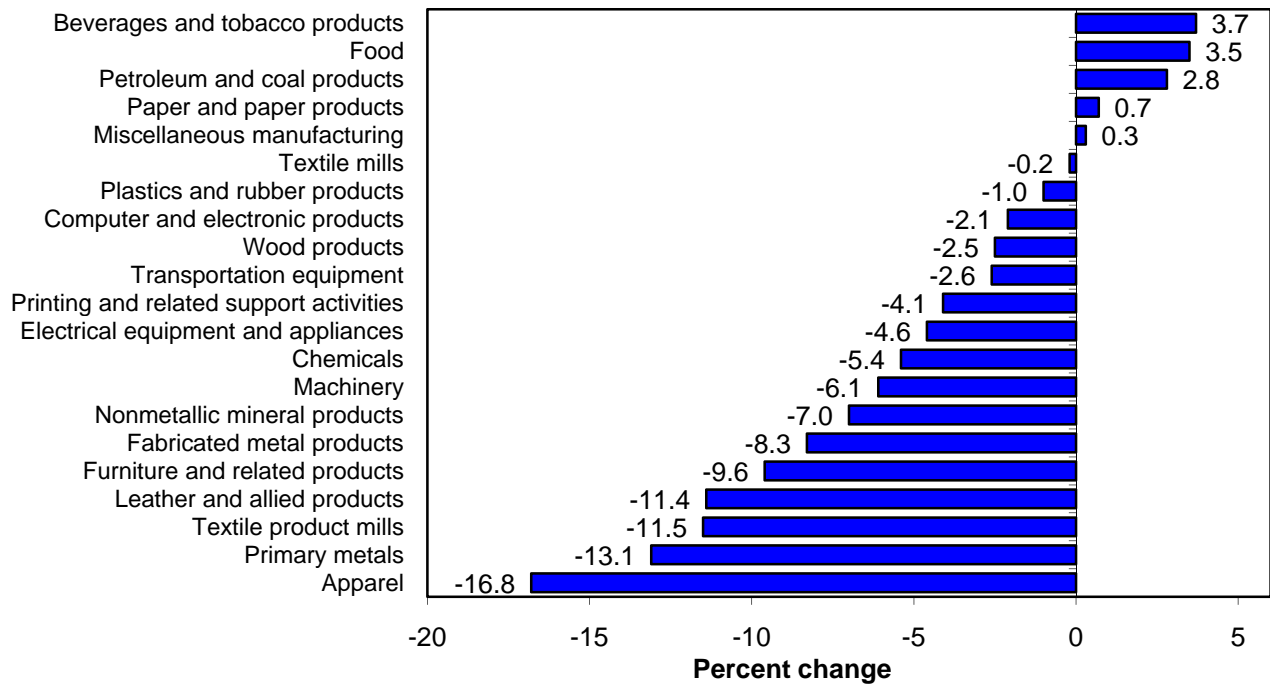
Productivity increased the most in seafood product preparation and packaging and in agricultural chemical manufacturing. In both industries, hours declined while output increased. Productivity fell the most in audio and video equipment manufacturing, where output declined much more than hours.



Industry labor productivity measures are updated as data become available. Productivity measures for industries in other sectors can be accessed on the BLS Labor Productivity and Costs web site at www.bls.gov/lpc.

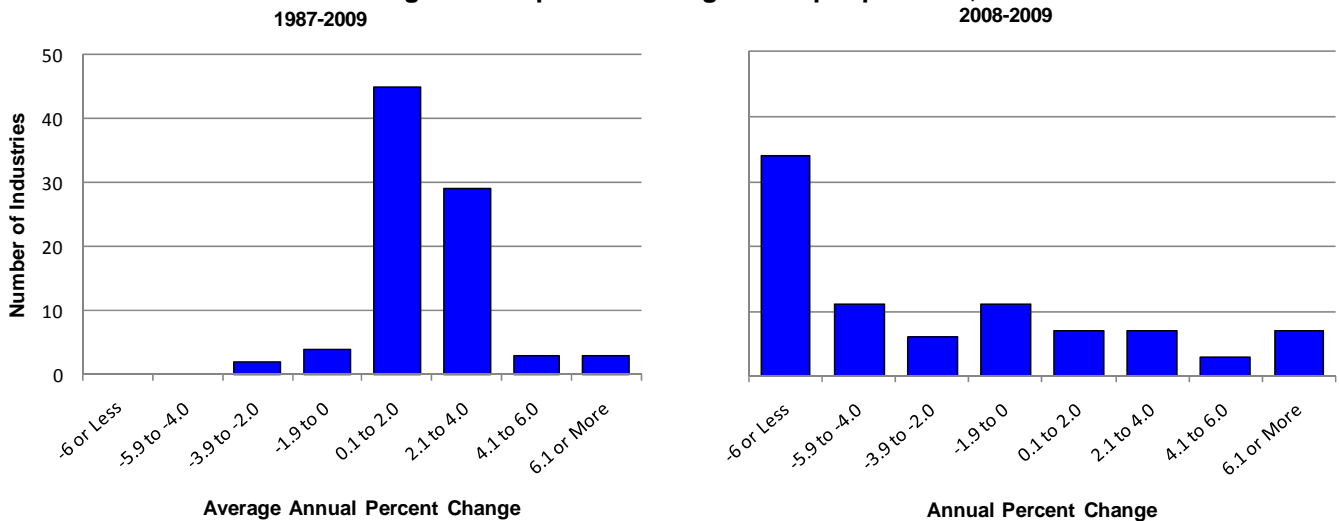
Labor productivity increased in only 5 of the 21 3-digit NAICS manufacturing industries in 2009. Chart 2 shows the range of productivity changes for all 3-digit manufacturing industries. Output fell in all but one of these industries, and hours declined in all of them. Unit labor costs fell in 3 of the industries.

Chart 2. Percent change in output per hour in 3-digit NAICS manufacturing industries, 2008-2009



The industry productivity performance in 2009 contrasts with industry productivity performance over the longer term. Between 1987 and 2009, labor productivity increased in 93 percent of the detailed manufacturing industries and unit labor costs declined in 14 percent of the industries. Chart 3 below shows a significantly more negative distribution of productivity growth rates in the most recent year compared to those for the longer-term period from 1987 to 2009.

Chart 3. Distribution of average annual percent change in output per hour, 1987-2009 and 2008-2009



Technical Note

Labor Productivity: The industry labor productivity measures describe the relationship between industry output and the labor time involved in its production. They show the changes from period to period in the amount of goods and services produced per hour. Although the labor productivity measures relate output to hours of all persons in an industry, they do not measure the specific contribution of labor or any other factor of production. Rather, they reflect the joint effects of many influences, including changes in technology; capital investment; utilization of capacity, energy, and materials; the use of purchased services inputs, including contract employment services; the organization of production; managerial skill; and the characteristics and effort of the workforce.

Output: Industry output is measured as an annual-weighted index of the changes in the various products (in real terms) provided for sale outside the industry. Real industry output is usually derived by deflating nominal sales or values of production using BLS price indexes, but for some industries it is measured by physical quantities of output. For manufacturing industries, industry output reflects sectoral value of production, derived by adjusting shipments for changes in inventories and removing intra-industry transactions.

Industry output measures are constructed primarily using data from the economic censuses and annual surveys of the Census Bureau, U.S. Department of Commerce, together with information on price changes primarily from BLS.

Labor Hours: The primary source of data on industry employment and hours is the BLS Current Employment Statistics (CES) survey. The CES provides monthly data on the number of total and production worker jobs held by wage and salary workers in nonfarm establishments, as well as data on the average weekly hours of production workers in those establishments. CES data are supplemented with data from the Current Population Survey (CPS) to estimate employment and hours of self-employed and unpaid family workers in each industry. Data from the CPS, together with the CES data, are also used to estimate the historical average weekly hours of nonproduction workers for each industry. CES and CPS data are supplemented or further disaggregated for some industries using data from the BLS Quarterly Census of Employment and Wages (QCEW), the Bureau of the Census, or other sources. Hours of all persons in an industry are treated as homogeneous and are directly aggregated.

Unit Labor Costs: Unit labor costs represent the cost of labor required to produce one unit of output. The unit labor cost indexes are computed by dividing an index of industry labor compensation by an index of real industry output. Unit labor costs also describe the relationship between compensation per hour and real output per hour (labor productivity). Increases in hourly compensation increase unit labor costs; increases in labor productivity offset compensation increases and lower unit labor costs.

Compensation, defined as payroll plus supplemental payments, is a measure of the cost to the employer of securing the services of labor. Payroll includes salaries, wages, commissions, dismissal pay, bonuses, vacation and sick leave pay, and compensation in kind. Supplemental payments include legally required expenditures and payments for voluntary programs. The legally required portion consists primarily of Federal old age and survivors' insurance, unemployment compensation, and workers' compensation. Payments for voluntary programs include all programs not specifically required by legislation, such as the employer portion of private health insurance and pension plans.

Revisions: This news release incorporates data from the 2009 Annual Survey of Manufactures (ASM) and the November 2010 Subject Series Revision to the 2007 Economic Census, both published by the Census Bureau. The labor productivity and output series for all industries have been revised for 2008 and earlier years as a result. This news release also incorporates the annual benchmark revision of the BLS Current Employment Statistics (CES) survey published in February 2011. The industries included in this release are classified according to the 2007 NAICS. All of the measures for 2009 in this release are preliminary and subject to revision.

Additional Information: While the rates of change reported by BLS in this news release are rounded to one decimal place, all industry productivity percent changes are calculated using index numbers rounded to three decimal places.

Year-to-year movements in industry productivity may be erratic, particularly in smaller industries. The annual measures based on sample data may differ from measures generated by a census of establishments in the industry. Annual changes in an industry's output and use of labor may reflect cyclical changes in the economy as well as long-term trends. As a result, long-term productivity trends tend to be more reliable indicators of industry performance than year-to-year changes.

Industry productivity and related indexes and rates of change can be accessed online by visiting the Labor Productivity and Costs web site at www.bls.gov/lpc. Levels of industry employment, hours, labor compensation, and value of production, and the implicit price deflator for output for these industries, are available by calling the Division of Industry Productivity Studies (202-691-5618) or by sending an e-mail to dipsweb@bls.gov. Information in this report will be made available to sensory-impaired individuals upon request. Voice phone: 202-691-5618; TDD message referral phone number: 1-800-877-8339.

To subscribe to the industry productivity program's electronic notification service, send an e-mail to dipsnews@bls.gov with the word "subscribe" in the subject line.

Table 1. Percent change in output per hour, output, hours, compensation, and unit labor costs, 2008-2009

NAICS code	Industry	2009 Employment (thousands)	Percent change, 2008-2009				
			Output per hour	Output	Hours	Labor compensation	Unit labor costs
Manufacturing							
311	Food	1491	3.5	0.5	-2.9	0.3	-0.2
3111	Animal food	53	5.9	3.5	-2.3	-1.1	-4.4
3112	Grain and oilseed milling	60	8.4	6.4	-1.8	2.2	-3.9
3113	Sugar and confectionery products	73	3.0	-4.6	-7.4	0.3	5.1
3114	Fruit and vegetable preserving and specialty	175	-5.4	-3.3	2.2	2.4	5.9
3115	Dairy products	133	6.2	1.9	-4.1	3.8	1.8
3116	Animal slaughtering and processing	500	3.1	0.6	-2.4	0.7	0.0
3117	Seafood product preparation and packaging	38	18.3	5.7	-10.6	-5.9	-10.9
3118	Bakeries and tortilla manufacturing	296	1.7	-1.4	-3.0	-3.5	-2.1
3119	Other food products	163	4.6	-1.1	-5.5	0.3	1.4
312	Beverages and tobacco products	195	3.7	-8.0	-11.3	-9.5	-1.7
3121	Beverages	176	9.1	-1.9	-10.1	-6.5	-4.6
3122	Tobacco and tobacco products	19	-1.9	-22.2	-20.7	-25.1	-3.8
313	Textile mills	135	-0.2	-18.1	-18.0	-18.4	-0.4
3131	Fiber, yarn, and thread mills	31	-7.2	-24.4	-18.5	-21.5	3.9
3132	Fabric mills	60	3.7	-14.9	-17.9	-16.1	-1.4
3133	Textile and fabric finishing mills	44	-3.4	-20.4	-17.6	-20.3	0.1
314	Textile product mills	144	-11.5	-24.7	-14.9	-18.0	8.9
3141	Textile furnishings mills	69	-14.6	-27.9	-15.5	-18.8	12.6
3149	Other textile product mills	75	-5.9	-19.3	-14.3	-17.2	2.6
315	Apparel	192	-16.8	-27.6	-13.0	-22.3	7.3
3151	Apparel knitting mills	24	-0.4	-25.8	-25.6	-16.3	12.9
3152	Cut and sew apparel	153	-22.0	-30.3	-10.6	-24.4	8.4
3159	Accessories and other apparel	15	0.1	-12.0	-12.1	-10.8	1.5
316	Leather and allied products	33	-11.4	-22.5	-12.5	-16.2	8.1
3161	Leather and hide tanning and finishing	4	-16.9	-29.2	-14.8	-27.0	3.1
3162	Footwear	15	-5.5	-19.1	-14.4	-12.6	8.1
3169	Other leather products	14	-15.2	-23.4	-9.7	-15.4	10.5
321	Wood products	389	-2.5	-23.9	-21.9	-23.5	0.5
3211	Sawmills and wood preservation	84	7.3	-14.3	-20.1	-19.4	-6.0
3212	Plywood and engineered wood products	68	-2.2	-28.2	-26.6	-29.1	-1.2
3219	Other wood products	237	-6.3	-26.1	-21.1	-23.0	4.2
322	Paper and paper products	408	0.7	-10.7	-11.3	-7.9	3.2
3221	Pulp, paper, and paperboard mills	118	-1.4	-9.2	-7.9	-3.7	6.0
3222	Converted paper products	290	1.6	-11.3	-12.7	-10.5	1.0
323	Printing and related support activities	550	-4.1	-14.9	-11.3	-14.8	0.2
3231	Printing and related support activities	550	-4.1	-14.9	-11.3	-14.8	0.2
324	Petroleum and coal products	117	2.8	-2.6	-5.3	0.4	3.2
3241	Petroleum and coal products	117	2.8	-2.6	-5.3	0.4	3.2
325	Chemicals	807	-5.4	-10.7	-5.6	-5.3	6.1
3251	Basic chemicals	146	-12.1	-16.7	-5.3	-7.4	11.2
3252	Resin, rubber, and artificial fibers	92	-7.3	-17.3	-10.9	-9.3	9.7
3253	Agricultural chemicals	37	14.1	12.3	-1.5	-3.7	-14.2
3254	Pharmaceuticals and medicines	285	-4.6	-6.7	-2.3	-1.5	5.6
3255	Paints, coatings, and adhesives	57	-6.3	-17.1	-11.5	-10.1	8.4
3256	Soaps, cleaning compounds, and toiletries	103	-0.5	-7.6	-7.1	-5.8	1.9
3259	Other chemical products and preparations	87	-4.8	-10.6	-6.1	-6.5	4.6
326	Plastics and rubber products	631	-1.0	-17.2	-16.4	-13.3	4.7
3261	Plastics products	506	-1.1	-17.3	-16.4	-13.4	4.7
3262	Rubber products	124	-0.5	-16.8	-16.4	-13.0	4.6

Table 1. Percent change in output per hour, output, hours, compensation, and unit labor costs, 2008-2009

NAICS code	Industry	2009 Employment (thousands)	Percent change, 2008-2009				
			Output per hour	Output	Hours	Labor compensation	Unit labor costs
327	Nonmetallic mineral products	409	-7.0	-23.0	-17.3	-17.9	6.7
3271	Clay products and refractories	51	-14.6	-28.1	-15.9	-26.1	2.9
3272	Glass and glass products	89	3.1	-14.4	-17.0	-10.2	4.9
3273	Cement and concrete products	186	-10.4	-27.6	-19.2	-20.7	9.7
3274	Lime and gypsum products	15	-7.1	-22.1	-16.2	-21.9	0.4
3279	Other nonmetallic mineral products	69	-5.7	-18.3	-13.4	-15.3	3.7
331	Primary metals	365	-13.1	-30.3	-19.7	-19.1	16.0
3311	Iron and steel mills and ferroalloy production	86	-22.4	-34.7	-15.8	-20.4	21.9
3312	Steel products from purchased steel	51	-15.6	-31.6	-19.0	-19.8	17.2
3313	Alumina and aluminum production	56	-5.1	-21.8	-17.5	-18.6	4.1
3314	Other nonferrous metal production	58	-14.5	-24.6	-11.8	-11.0	17.9
3315	Foundries	114	1.8	-26.2	-27.5	-21.7	6.0
332	Fabricated metal products	1344	-8.3	-23.3	-16.3	-16.5	8.9
3321	Forging and stamping	89	-6.8	-26.7	-21.3	-18.1	11.7
3322	Cutlery and hand tools	45	-11.8	-19.5	-8.7	-19.3	0.2
3323	Architectural and structural metals	351	-9.2	-23.5	-15.8	-18.1	7.1
3324	Boilers, tanks, and shipping containers	89	-4.4	-16.4	-12.6	-14.8	1.9
3325	Hardware	25	-13.2	-27.6	-16.7	-17.6	13.8
3326	Spring and wire products	44	-4.3	-22.2	-18.7	-15.8	8.3
3327	Machine shops and threaded products	323	-11.6	-25.7	-15.9	-18.8	9.2
3328	Coating, engraving, and heat treating metals	123	-6.2	-26.5	-21.6	-17.6	12.1
3329	Other fabricated metal products	255	-7.3	-21.4	-15.2	-9.9	14.6
333	Machinery	1037	-6.1	-22.3	-17.3	-13.7	11.1
3331	Agriculture, construction, and mining machinery	215	-11.2	-23.5	-13.8	-12.5	14.3
3332	Industrial machinery	103	-8.5	-27.5	-20.8	-12.6	20.5
3333	Commercial and service industry machinery	97	-3.1	-13.3	-10.6	-7.0	7.3
3334	HVAC and commercial refrigeration equipment	129	0.9	-17.5	-18.3	-10.7	8.3
3335	Metalworking machinery	160	-8.6	-29.9	-23.4	-21.6	11.9
3336	Turbine and power transmission equipment	95	-13.0	-24.5	-13.3	-14.6	13.2
3339	Other general purpose machinery	238	-3.3	-20.7	-18.0	-13.4	9.2
334	Computer and electronic products	1145	-2.1	-12.0	-10.1	-7.7	4.9
3341	Computer and peripheral equipment	168	-0.3	-10.3	-10.0	-12.4	-2.4
3342	Communications equipment	122	-15.4	-18.8	-4.0	-11.3	9.3
3343	Audio and video equipment	24	-33.3	-45.6	-18.5	-26.5	35.1
3344	Semiconductors and electronic components	381	-3.9	-17.2	-13.8	-13.1	4.9
3345	Electronic instruments	422	1.0	-6.1	-7.1	-1.7	4.7
3346	Magnetic media manufacturing and reproduction	29	10.7	-12.5	-21.0	-9.8	3.1
335	Electrical equipment and appliances	376	-4.6	-19.8	-15.9	-12.3	9.3
3351	Electric lighting equipment	49	-0.9	-19.8	-19.1	-10.0	12.2
3352	Household appliances	60	1.3	-17.2	-18.2	-13.1	4.9
3353	Electrical equipment	146	-6.3	-19.9	-14.4	-13.3	8.2
3359	Other electrical equipment and components	122	-7.0	-21.1	-15.1	-11.8	11.7
336	Transportation equipment	1362	-2.6	-19.0	-16.8	-11.9	8.7
3361	Motor vehicles	147	-4.3	-30.2	-27.1	-24.0	8.9
3362	Motor vehicle bodies and trailers	106	-7.1	-30.9	-25.6	-25.5	7.8
3363	Motor vehicle parts	420	-0.5	-25.6	-25.2	-24.3	1.7
3364	Aerospace products and parts	496	3.0	0.8	-2.1	1.5	0.7
3365	Railroad rolling stock	23	2.1	-25.9	-27.4	-11.0	20.0
3366	Ship and boat building	132	5.0	-14.3	-18.4	-3.7	12.4
3369	Other transportation equipment	40	-15.3	-18.6	-3.8	-2.0	20.4
337	Furniture and related products	420	-9.6	-26.5	-18.7	-22.5	5.4
3371	Household and institutional furniture	273	-10.2	-28.3	-20.1	-24.4	5.4
3372	Office furniture and fixtures	108	-13.0	-29.2	-18.6	-21.7	10.6
3379	Other furniture-related products	39	-2.8	-10.5	-7.9	-11.9	-1.6
339	Miscellaneous manufacturing	649	0.3	-8.6	-8.9	-5.8	3.1
3391	Medical equipment and supplies	321	-0.7	-2.1	-1.4	-0.7	1.5
3399	Other miscellaneous manufacturing	328	-0.7	-16.4	-15.8	-11.9	5.4

Table 2. Average annual percent change in output per hour, output, hours, compensation, and unit labor costs, 1987-2009

NAICS code	Industry	Average annual percent change, 1987-2009				
		Output per hour	Output	Hours	Labor compensation	Unit labor costs
Manufacturing						
311	Food	1.2	1.3	0.2	3.0	1.6
3111	Animal food	3.0	2.2	-0.8	3.2	1.0
3112	Grain and oilseed milling	2.3	1.5	-0.9	2.2	0.7
3113	Sugar and confectionery products	0.8	-0.5	-1.2	1.7	2.2
3114	Fruit and vegetable preserving and specialty	1.3	1.1	-0.2	2.9	1.7
3115	Dairy products	1.8	1.1	-0.7	3.2	2.2
3116	Animal slaughtering and processing	1.0	2.2	1.2	3.6	1.4
3117	Seafood product preparation and packaging	1.6	0.3	-1.2	2.6	2.2
3118	Bakeries and tortilla manufacturing	0.5	0.2	-0.3	2.1	1.9
3119	Other food products	0.6	1.9	1.2	4.0	2.1
312	Beverages and tobacco products	0.7	-0.7	-1.4	1.1	1.8
3121	Beverages	2.2	1.3	-0.9	1.8	0.6
3122	Tobacco and tobacco products	0.4	-4.1	-4.5	-1.9	2.3
313	Textile mills	3.4	-3.3	-6.5	-3.3	0.0
3131	Fiber, yarn, and thread mills	3.5	-2.8	-6.0	-3.1	-0.4
3132	Fabric mills	4.9	-3.1	-7.6	-3.3	-0.2
3133	Textile and fabric finishing mills	0.4	-4.4	-4.8	-3.5	0.9
314	Textile product mills	0.5	-2.2	-2.7	-0.1	2.2
3141	Textile furnishings mills	0.1	-2.9	-2.9	-0.8	2.1
3149	Other textile product mills	1.4	-1.1	-2.4	0.9	2.0
315	Apparel	-2.3	-9.3	-7.1	-6.1	3.5
3151	Apparel knitting mills	-0.6	-7.8	-7.3	-6.8	1.1
3152	Cut and sew apparel	-2.8	-9.9	-7.3	-6.1	4.1
3159	Accessories and other apparel	-2.8	-7.3	-4.6	-4.5	3.0
316	Leather and allied products	1.4	-5.5	-6.9	-3.5	2.1
3161	Leather and hide tanning and finishing	-0.6	-6.6	-6.0	-3.9	2.9
3162	Footwear	2.1	-6.3	-8.2	-4.7	1.7
3169	Other leather products	0.6	-4.5	-5.0	-1.8	2.8
321	Wood products	1.1	-1.2	-2.3	1.2	2.4
3211	Sawmills and wood preservation	2.7	-0.6	-3.2	0.4	1.0
3212	Plywood and engineered wood products	0.6	-1.6	-2.1	0.5	2.1
3219	Other wood products	0.7	-1.3	-2.0	1.8	3.1
322	Paper and paper products	1.9	-0.3	-2.2	1.1	1.4
3221	Pulp, paper, and paperboard mills	2.8	-0.6	-3.3	0.3	0.9
3222	Converted paper products	1.5	-0.1	-1.6	1.7	1.8
323	Printing and related support activities	1.2	-0.6	-1.8	0.9	1.5
3231	Printing and related support activities	1.2	-0.6	-1.8	0.9	1.5
324	Petroleum and coal products	2.6	1.0	-1.5	3.8	2.7
3241	Petroleum and coal products	2.6	1.0	-1.5	3.8	2.7
325	Chemicals	1.4	0.5	-0.9	2.9	2.4
3251	Basic chemicals	1.9	-0.4	-2.3	1.6	2.0
3252	Resin, rubber, and artificial fibers	1.7	-0.4	-2.1	1.5	1.9
3253	Agricultural chemicals	2.9	0.8	-2.0	1.6	0.8
3254	Pharmaceuticals and medicines	0.4	2.5	2.1	6.1	3.5
3255	Paints, coatings, and adhesives	0.7	-1.2	-1.8	2.0	3.2
3256	Soaps, cleaning compounds, and toiletries	2.9	1.8	-1.0	2.7	0.8
3259	Other chemical products and preparations	2.1	-0.4	-2.5	1.1	1.5
326	Plastics and rubber products	1.9	0.8	-1.1	2.2	1.4
3261	Plastics products	1.8	1.1	-0.7	2.6	1.6
3262	Rubber products	2.0	-0.4	-2.4	0.7	1.1

Table 2. Average annual percent change in output per hour, output, hours, compensation, and unit labor costs, 1987-2009

NAICS code	Industry	Average annual percent change, 1987-2009				
		Output per hour	Output	Hours	Labor compensation	Unit labor costs
327	Nonmetallic mineral products	0.8	-0.5	-1.3	1.4	1.9
3271	Clay products and refractories	0.5	-2.5	-3.0	-1.2	1.4
3272	Glass and glass products	2.1	-0.2	-2.2	0.6	0.8
3273	Cement and concrete products	-0.1	-0.5	-0.4	2.3	2.8
3274	Lime and gypsum products	0.7	-1.1	-1.8	1.8	3.0
3279	Other nonmetallic mineral products	1.3	0.5	-0.8	2.1	1.6
331	Primary metals	1.9	-1.2	-3.0	0.2	1.3
3311	Iron and steel mills and ferroalloy production	3.8	0.4	-3.3	-0.4	-0.8
3312	Steel products from purchased steel	-1.6	-3.2	-1.6	0.8	4.1
3313	Alumina and aluminum production	2.1	-1.2	-3.2	0.1	1.3
3314	Other nonferrous metal production	0.7	-2.1	-2.8	1.7	3.9
3315	Foundries	1.9	-1.3	-3.2	0.0	1.4
332	Fabricated metal products	1.2	0.2	-1.0	2.2	2.0
3321	Forging and stamping	2.5	0.3	-2.1	1.5	1.1
3322	Cutlery and hand tools	0.8	-1.9	-2.6	0.5	2.4
3323	Architectural and structural metals	0.7	0.5	-0.1	3.1	2.5
3324	Boilers, tanks, and shipping containers	0.6	-0.4	-1.1	1.6	2.0
3325	Hardware	0.4	-4.0	-4.4	-1.8	2.3
3326	Spring and wire products	2.4	-0.5	-2.8	1.0	1.5
3327	Machine shops and threaded products	1.8	1.8	0.0	3.4	1.6
3328	Coating, engraving, and heat treating metals	2.5	1.7	-0.8	2.6	0.9
3329	Other fabricated metal products	1.3	-0.2	-1.5	1.5	1.7
333	Machinery	2.1	0.6	-1.5	1.6	1.0
3331	Agriculture, construction, and mining machinery	2.3	2.2	-0.1	2.8	0.6
3332	Industrial machinery	1.8	-0.1	-1.9	1.7	1.8
3333	Commercial and service industry machinery	1.3	-0.9	-2.1	0.2	1.1
3334	HVAC and commercial refrigeration equipment	2.1	0.7	-1.3	1.9	1.1
3335	Metalworking machinery	1.6	-1.1	-2.6	0.5	1.6
3336	Turbine and power transmission equipment	1.2	0.4	-0.9	0.9	0.6
3339	Other general purpose machinery	2.4	0.8	-1.6	2.3	1.5
334	Computer and electronic products	11.2	8.4	-2.5	0.8	-7.0
3341	Computer and peripheral equipment	23.3	18.3	-4.1	-2.6	-17.6
3342	Communications equipment	5.4	2.5	-2.8	0.2	-2.2
3343	Audio and video equipment	1.8	-2.5	-4.2	-0.7	1.8
3344	Semiconductors and electronic components	15.9	13.6	-2.0	1.2	-10.9
3345	Electronic instruments	3.9	1.7	-2.1	1.9	0.2
3346	Magnetic media manufacturing and reproduction	2.4	1.0	-1.4	0.6	-0.4
335	Electrical equipment and appliances	2.3	-0.6	-2.8	0.9	1.5
3351	Electric lighting equipment	2.0	-0.7	-2.6	1.2	1.9
3352	Household appliances	3.7	-0.1	-3.7	-0.8	-0.7
3353	Electrical equipment	2.3	-0.4	-2.7	0.9	1.3
3359	Other electrical equipment and components	1.6	-0.9	-2.4	1.5	2.4
336	Transportation equipment	2.7	0.5	-2.1	0.7	0.2
3361	Motor vehicles	3.0	-0.6	-3.5	-0.8	-0.2
3362	Motor vehicle bodies and trailers	0.8	-0.6	-1.4	2.4	3.0
3363	Motor vehicle parts	2.7	0.6	-2.1	-0.2	-0.8
3364	Aerospace products and parts	2.0	-0.2	-2.1	0.9	1.1
3365	Railroad rolling stock	5.0	4.2	-0.8	3.4	-0.8
3366	Ship and boat building	2.3	0.6	-1.7	2.6	2.0
3369	Other transportation equipment	6.2	6.4	0.2	5.1	-1.3
337	Furniture and related products	1.3	-0.8	-2.1	1.0	1.9
3371	Household and institutional furniture	1.2	-1.2	-2.4	0.8	2.0
3372	Office furniture and fixtures	1.1	-0.7	-1.8	1.3	2.0
3379	Other furniture-related products	2.0	1.1	-0.9	2.0	0.9
339	Miscellaneous manufacturing	2.9	2.4	-0.4	4.0	1.5
3391	Medical equipment and supplies	3.4	4.6	1.2	5.7	1.0
3399	Other miscellaneous manufacturing	2.1	0.4	-1.7	2.4	2.0