

Transmission of material in this release is embargoed until  
8:30 a.m. (EDT) Friday, April 10, 2015

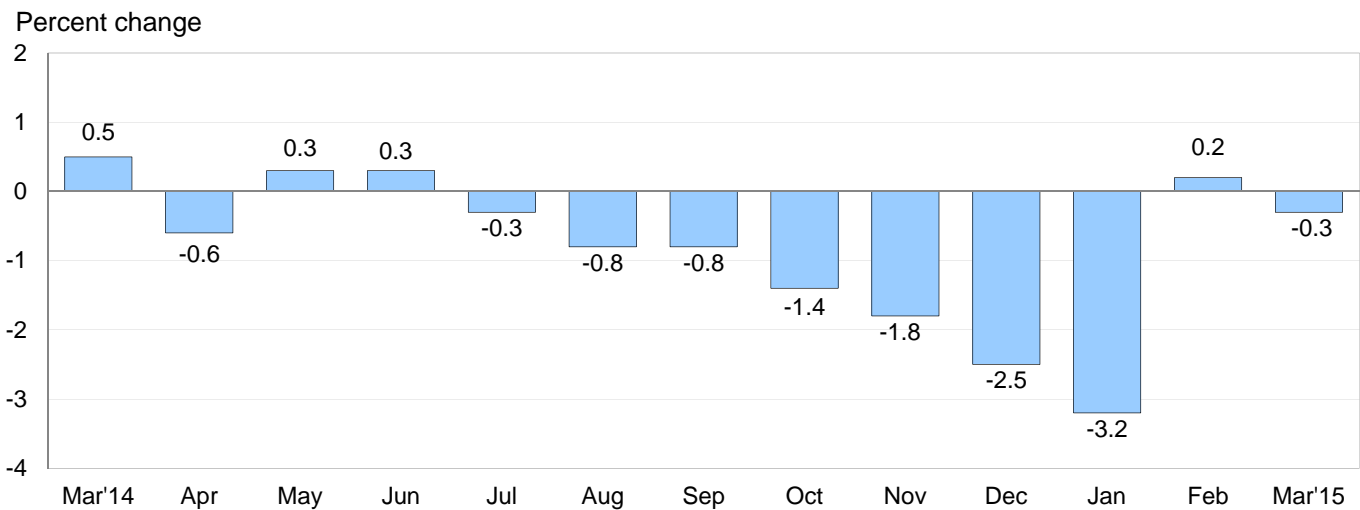
USDL-15-0564

Technical information: (202) 691-7101 • MXPinfo@bls.gov • www.bls.gov/mxp  
Media contact: (202) 691-5902 • PressOffice@bls.gov

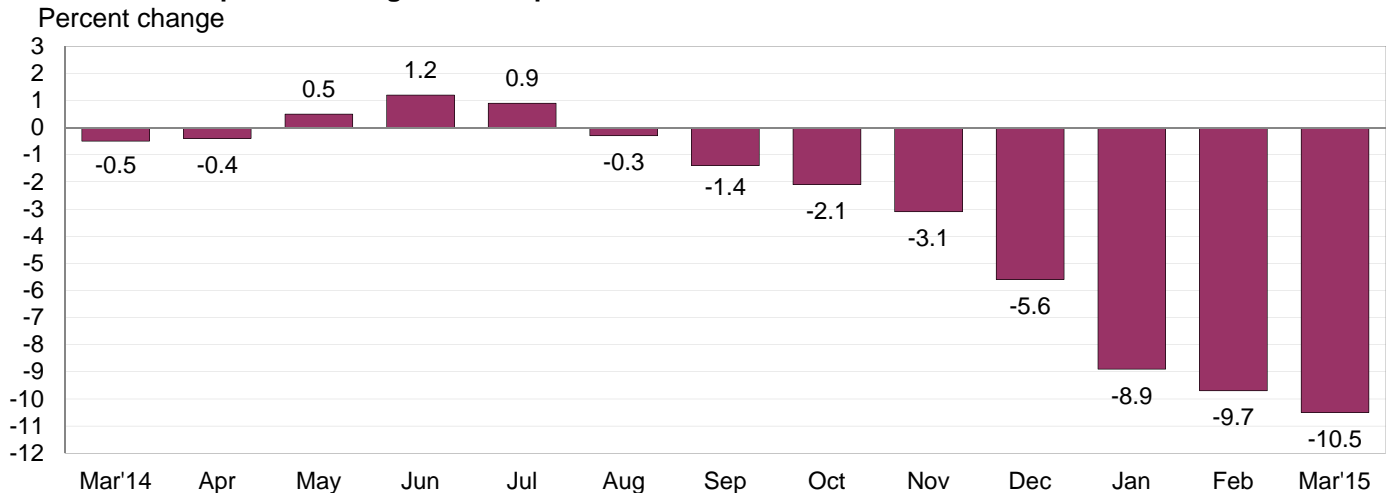
### U.S. IMPORT AND EXPORT PRICE INDEXES – MARCH 2015

U.S. import prices fell 0.3 percent in March following a 0.2-percent upturn the previous month, the U.S. Bureau of Labor Statistics reported today. In March, lower nonfuel prices more than offset a rise in fuel prices. The price index for U.S. exports rose in March, ticking up 0.1 percent, after declining 0.2 percent in February.

**Chart 1. One-month percent change in the Import Price Index: March 2014 – March 2015**



**Chart 2. 12-month percent change in the Import Price Index: March 2014 – March 2015**



**All Imports:** Import prices decreased 0.3 percent in March, after increasing 0.2 percent in February, the first monthly advance recorded since a 0.3-percent rise in June 2014. Prior to February, import prices decreased 10.3 percent from June 2014 to January 2015. U.S. import prices declined 10.5 percent over the past year, the largest 12-month decrease since the index fell 12.0 percent for the year ended September 2009.

**Fuel Imports:** Fuel prices increased for the second consecutive month in March, rising 0.4 percent, after a 3.9-percent advance in February. Fuel prices had fallen 47.6 percent between June 2014 and January 2015, and despite the recent upturn, declined 45.2 percent over the past 12 months. The increase in March was led by a 0.8-percent advance in petroleum prices, which more than offset a 7.5-percent decrease in natural gas prices. Both the price indexes for petroleum and natural gas fell for the year ended in March, declining 45.1 percent and 59.1 percent, respectively.

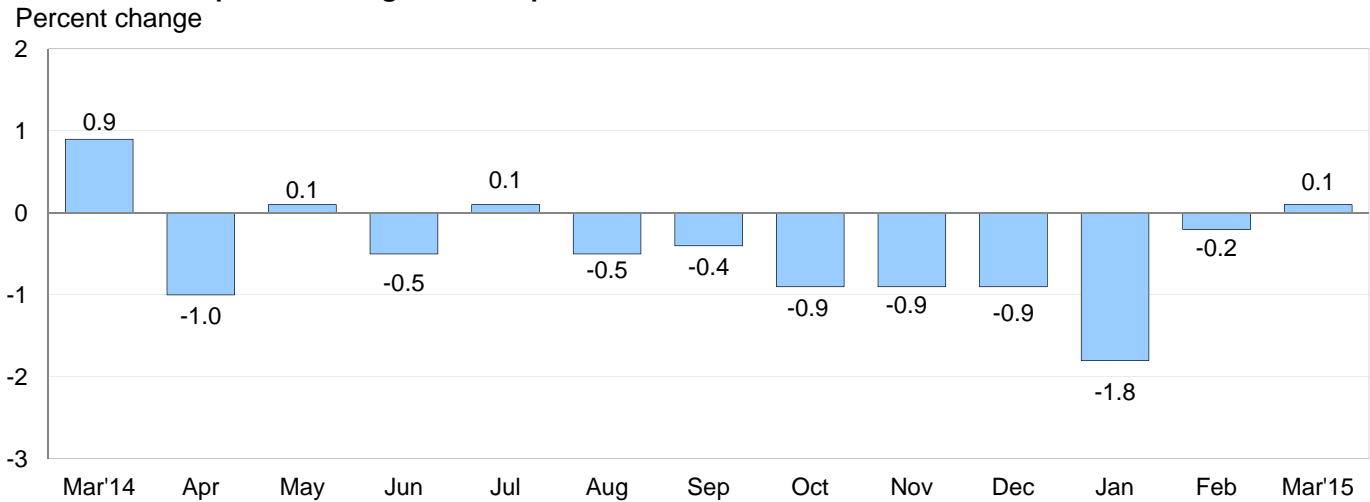
**All Imports Excluding Fuel:** The price index for nonfuel imports continued to trend down in March, decreasing 0.4 percent following a 0.3-percent drop the previous month. Nonfuel import prices have not recorded a monthly increase since the index rose 0.1 percent in July 2014. In March, lower prices for nonfuel industrial supplies and materials; foods, feeds, and beverages; and each of the major finished goods categories contributed to the overall decline in nonfuel import prices. Prices for nonfuel imports fell 1.9 percent over the past 12 months, the largest year-over-year decrease since the index declined 3.1 percent between October 2008 and October 2009.

**Table A. Percent change in Import and Export Price Indexes, selected categories**

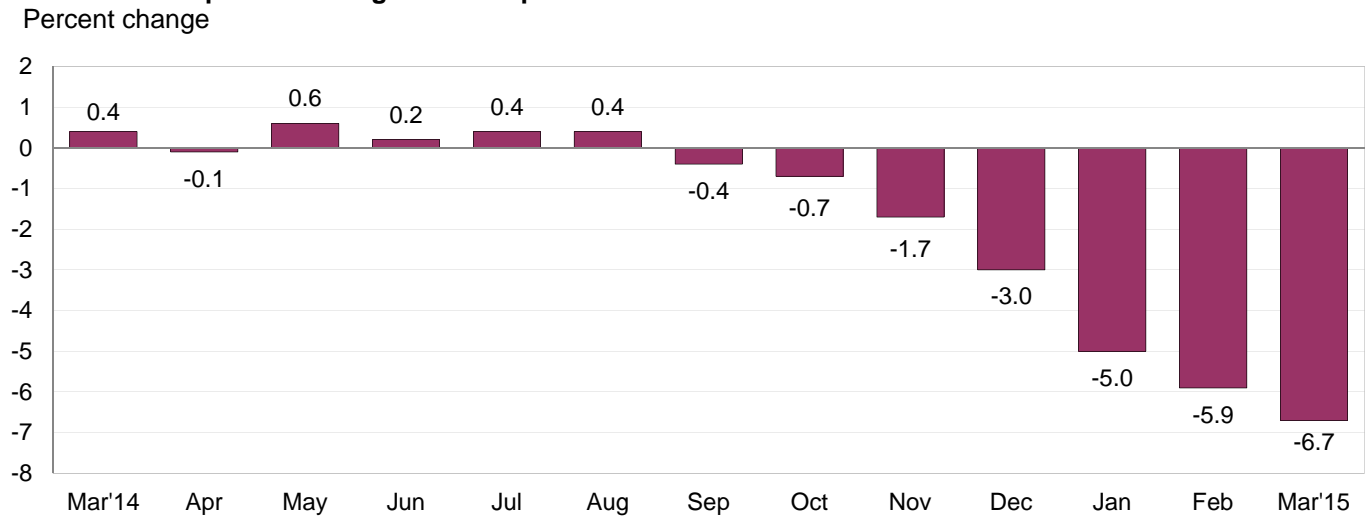
Month	IMPORTS			EXPORTS		
	All imports	Fuel imports	Nonfuel imports	All exports	Agricultural exports	Non-agricultural exports
<b>2014</b>						
March.....	0.5	1.0	0.3	0.9	2.8	0.7
April.....	-0.6	-2.6	0.0	-1.0	1.5	-1.2
May.....	0.3	1.2	0.0	0.1	0.3	0.0
June.....	0.3	1.6	-0.1	-0.5	-1.9	-0.3
July.....	-0.3	-1.5	0.1	0.1	-1.8	0.2
August.....	-0.8	-3.8	0.0	-0.5	-3.1	-0.2
September.....	-0.8	-3.6	-0.2	-0.4	-1.6	-0.2
October.....	-1.4	-6.8	-0.1	-0.9	-2.2	-0.7
November.....	-1.8	-9.3	-0.3	-0.9	0.1	-1.0
December.....	-2.5	-15.0 <sup>r</sup>	-0.1	-0.9	-0.7	-1.0
<b>2015</b>						
January.....	-3.2 <sup>r</sup>	-20.1 <sup>r</sup>	-0.7 <sup>r</sup>	-1.8 <sup>r</sup>	-1.3 <sup>r</sup>	-1.9 <sup>r</sup>
February.....	0.2 <sup>r</sup>	3.9 <sup>r</sup>	-0.3	-0.2 <sup>r</sup>	-2.1 <sup>r</sup>	0.1 <sup>r</sup>
March.....	-0.3	0.4	-0.4	0.1	-1.7	0.2
Mar. 2013 to 2014.....	-0.5	1.0	-0.7	0.4	-1.4	0.5
Mar. 2014 to 2015.....	-10.5	-45.2	-1.9	-6.7	-13.5	-5.9

r Revised

**Chart 3. One-month percent change in the Export Price Index: March 2014 – March 2015**



**Chart 4. 12-month percent change in the Export Price Index: March 2014 – March 2015**



**All Exports:** The price index for U.S. exports ticked up 0.1 percent in March, after declining 0.2 percent the previous month. The March upturn in overall export prices was driven by higher nonagricultural prices, and was the first 1-month advance since the index rose 0.1 percent in July 2014. The last time overall export prices advanced more than 0.1 percent was a 0.9 percent increase in March 2014. Despite the March 2015 advance, U.S. export prices fell 6.7 percent over the past year, the largest 12-month drop since the index declined 8.3 percent for the year ended July 2009.

**Agricultural Exports:** Prices for agricultural exports decreased 1.7 percent in March following a 2.1-percent drop in February. The March decline was led by a 5.9-percent decrease in meat prices, a 5.0-percent drop in fruit prices, and a 2.2-percent decline in nut prices. Export agricultural prices fell 13.5 percent over the past 12 months, the largest year-over-year decrease since the index declined 16.7 percent between September 2008 and September 2009.

**All Exports Excluding Agriculture:** Nonagricultural prices rose 0.2 percent in March, after ticking up 0.1 percent the previous month. The March increase matched a 0.2-percent rise in July 2014, and those were the largest 1-month advances since the index rose 0.7 percent in March 2014. The March 2015 increase was driven by higher prices for nonagricultural industrial supplies and materials. Despite the recent advances, the price index for overall nonagricultural prices declined 5.9 percent for the year ended in March.

## SELECTED MARCH HIGHLIGHTS

### Import Prices

**Imports by Locality of Origin:** The price index for imports from China fell 0.1 percent for the second consecutive month in March. Prices for imports from China declined 0.5 percent over the past 12 months. Import prices from Japan edged down 0.1 percent in March, after declining 0.2 percent the previous month. The price index for imports from Japan has not recorded a monthly advance since the index rose 0.2 percent in March 2014, and decreased 2.2 percent over the past year. Import prices from Canada and from Mexico also declined in March, decreasing 0.6 percent and 0.2 percent, respectively. Prices for imports from the European Union recorded no change in March.

**Nonfuel Industrial Supplies and Materials:** Nonfuel industrial supplies and materials prices declined 1.3 percent in March following a 1.0-percent decrease in February. The March drop was driven by a 3.0 percent decline in unfinished metal prices and a 0.7-percent drop in chemical prices.

**Finished Goods:** Prices for each of the major import finished goods categories recorded decreases in March. The price index for consumer goods and automotive vehicles each declined 0.3 percent. Consumer goods prices had increased 0.3 percent in February, while in contrast, prices for automotive vehicles fell 0.3 percent in February. In March, capital goods prices edged down 0.1 percent following 0.3-percent declines in each of the previous 2 months.

**Foods, Feeds, and Beverages:** Foods, feeds, and beverages prices decreased 1.1 percent in March, after recording no change in February. The March decline was led by a 6.5-percent decrease in meat prices. Lower prices for coffee; fish and shellfish; and feed and grain also contributed to the overall drop.

**Transportation Services:** Import air passenger fares fell 2.4 percent in March following a 2.5-percent drop the previous month. The March decline was led by lower European fares, while the drop in February was driven by lower Asian fares. Despite the recent declines, import air passenger fares rose 0.5 percent over the past year. The price index for import air freight increased 3.5 percent in March, the largest 1-month advance since the index rose 5.8 percent in May 2011. Despite the March increase, import air freight prices fell 1.6 percent over the past 12 months.

### Export Prices

**Nonagricultural Industrial Supplies and Materials:** Prices for nonagricultural industrial supplies and materials increased 0.7 percent in March, after advancing 0.2 percent the previous month. Both increases were driven by higher fuel prices which rose 4.9 percent in March and 3.7 percent in February.

**Finished Goods:** Export finished goods prices were mostly unchanged in March. Automotive vehicles prices ticked up 0.1 percent following a 0.2-percent decline in February. The price indexes for capital goods and consumer goods each recorded no change in March. Prices for capital goods had risen 0.2 percent the previous month, while consumer goods prices fell 0.5 percent.

**Transportation Services:** Export air passenger fares advanced 1.6 percent in March following a 13.3-percent decline the previous month. The March increase was led by a 3.1-percent rise in Latin American/Caribbean fares. Overall export air passenger fares fell 6.7 percent over the past year. Export air freight prices decreased 1.7 percent in March, after a 1.8-percent drop in February. Despite those declines, prices for export air freight rose 4.1 percent over the past year.

---

**Import and Export Price Index data for April 2015 are scheduled for release on Wednesday, May 13, 2015 at 8:30 a.m. (EDT).**

**Table 1. U.S. import price indexes and percent changes for selected categories of goods: March 2014 to March 2015**

[2000=100, unless otherwise noted]

Description	End Use	Relative importance Feb. 2015 <sup>1</sup>	Index		Percent change				
			Feb. 2015	Mar. 2015	Annual	Monthly			
					Mar. 2014 to Mar. 2015	Nov. 2014 to Dec. 2014	Dec. 2014 to Jan. 2015	Jan. 2015 to Feb. 2015	Feb. 2015 to Mar. 2015
<b>All commodities</b> .....		100.000	126.2	125.8	-10.5	-2.5	-3.2	0.2	-0.3
<b>All imports excluding food and fuels (Dec. 2010=100)</b> .....		82.890	100.8	100.4	-1.8	-0.2	-0.6	-0.2	-0.4
<b>All imports excluding petroleum</b> .....		89.715	113.9	113.4	-2.7	0.0	-0.7	-0.3	-0.4
<b>All imports excluding fuels (Dec. 2001=100)</b> .....		88.890	117.9	117.4	-1.9	-0.1	-0.7	-0.3	-0.4
<b>Foods, feeds, &amp; beverages</b> .....	0	6.000	178.9	176.9	-2.9	0.7	-1.8	0.0	-1.1
Agricultural foods, feeds & beverages, excluding distilled beverages.....	00	4.643	197.0	194.8	-2.1	1.3	-2.1	-0.2	-1.1
Nonagricultural foods (fish, distilled beverages).....	01	1.357	138.1	136.5	-5.1	-1.4	-0.7	0.8	-1.2
<b>Industrial supplies &amp; materials</b> .....	1	24.842	180.6	179.6	-29.5	-8.5	-10.5	1.2	-0.6
Industrial supplies & materials excluding petroleum.....		14.557	153.1	150.8	-9.9	0.1	-1.6	-1.6	-1.5
Industrial supplies & materials excluding fuels (Dec. 2001=100).....		13.732	172.9	170.6	-5.5	-0.4	-1.3	-1.0	-1.3
Industrial supplies & materials, durable....		8.188	161.2	158.4	-5.7	-0.1	-0.9	-0.9	-1.7
Industrial supplies & materials nondurable excluding petroleum.....		5.544	143.0	141.3	-14.8	0.5	-2.5	-2.5	-1.2
Fuels & lubricants.....	10	11.110	190.9	191.7	-45.2	-15.0	-20.1	3.9	0.4
Petroleum & petroleum products.....	100	10.284	206.1	207.8	-45.1	-16.4	-21.2	5.2	0.8
Crude.....	10000	7.514	211.4	207.6	-46.6	-18.9	-21.5	8.4	-1.8
Fuels, n.e.s.-coals & gas.....	101	0.627	111.8	105.3	-52.4	9.0	-7.6	-12.7	-5.8
Gas-natural.....	10110	0.467	96.9	89.6	-59.1	11.1	-9.0	-16.2	-7.5
Paper & paper base stocks.....	11	0.595	111.9	111.7	-0.9	0.0	-0.6	-0.2	-0.2
Materials associated with nondurable supplies & materials.....	12	5.020	162.5	161.3	-5.9	-0.9	-1.9	-1.3	-0.7
Selected building materials.....	13	1.217	139.8	138.2	-3.4	0.0	0.1	-0.7	-1.1
Unfinished metals related to durable goods.....	14	3.508	221.9	215.2	-10.0	0.0	-1.8	-1.2	-3.0
Finished metals related to durable goods.....	15	1.708	154.6	154.2	-2.0	-0.1	-0.8	-0.6	-0.3
Nonmetals related to durable goods.....	16	1.684	111.2	110.0	-1.3	-0.3	0.2	-0.4	-1.1
<b>Capital goods</b> .....	2	27.435	91.5	91.4	-1.0	-0.1	-0.3	-0.3	-0.1
Electric generating equipment.....	20	3.360	119.5	119.2	0.2	-0.1	-0.3	-0.2	-0.3
Nonelectrical machinery.....	21	21.667	83.9	83.9	-1.3	-0.1	-0.4	-0.5	0.0
Transportation equipment excluding motor vehicles (Dec. 2001=100).....	22	2.408	137.0	136.4	0.1	0.1	0.1	0.1	-0.4
<b>Automotive vehicles, parts &amp; engines</b> .....	3	15.217	111.5	111.2	-1.8	0.0	-0.7	-0.3	-0.3
<b>Consumer goods, excluding automotives</b> .....	4	26.506	107.8	107.5	-0.6	-0.1	-0.4	0.3	-0.3
Nondurables, manufactured.....	40	12.569	118.9	119.0	0.9	0.2	-0.3	0.1	0.1
Durables, manufactured.....	41	12.421	96.2	96.0	-1.8	-0.4	-0.3	0.0	-0.2
Nonmanufactured consumer goods.....	42	1.517	122.3	118.1	-1.9	-1.2	0.0	2.7	-3.4

<sup>1</sup> Relative importance figures are based on 2013 trade values.

NOTES: Data may be revised in each of the three months after original publication.

Dash = Not available

**Table 2. U.S. export price indexes and percent changes for selected categories of goods: March 2014 to March 2015**

[2000=100, unless otherwise noted]

Description	End Use	Relative importance Feb. 2015 <sup>1</sup>	Index		Percent change				
			Feb. 2015	Mar. 2015	Annual	Monthly			
					Mar. 2014 to Mar. 2015	Nov. 2014 to Dec. 2014	Dec. 2014 to Jan. 2015	Jan. 2015 to Feb. 2015	Feb. 2015 to Mar. 2015
<b>All commodities.....</b>		100.000	125.8	125.9	-6.7	-0.9	-1.8	-0.2	0.1
<b>Agricultural commodities.....</b>		9.259	195.1	191.8	-13.5	-0.7	-1.3	-2.1	-1.7
<b>All exports excluding food and fuels (Dec. 2010=100).....</b>		83.664	100.8	100.6	-1.8	-0.1	-0.3	-0.3	-0.2
<b>Nonagricultural commodities.....</b>		90.741	120.7	121.0	-5.9	-1.0	-1.9	0.1	0.2
<b>Foods, feeds, &amp; beverages.....</b>	0	8.572	196.3	193.9	-12.2	-0.8	-1.7	-2.2	-1.2
Agricultural foods, feeds & beverages, excluding distilled beverages.....	00	7.879	197.3	193.2	-14.0	-0.9	-2.0	-2.3	-2.1
Nonagricultural foods (fish, distilled beverages).....	01	0.693	193.6	210.0	11.9	1.0	2.4	-0.5	8.5
<b>Industrial supplies &amp; materials.....</b>	1	31.018	154.5	155.6	-16.3	-2.9	-5.1	0.1	0.7
Industrial supplies & materials, durable....		11.175	162.9	161.1	-6.1	-0.1	-0.4	-0.9	-1.1
Industrial supplies & materials, nondurable.....		19.843	150.9	153.5	-21.1	-4.4	-7.6	0.7	1.7
Agricultural industrial supplies & materials.....	10	1.380	187.2	189.0	-10.0	0.6	3.5	-0.8	1.0
<b>Nonagricultural industrial supplies &amp; materials.....</b>		29.637	153.5	154.5	-16.6	-3.1	-5.4	0.2	0.7
Fuels & lubricants.....	11	7.764	176.9	185.5	-37.0	-9.0	-16.5	3.7	4.9
Nonagricultural supplies & materials excluding fuels & building materials.....	12	20.860	158.3	156.9	-6.0	-0.7	-1.1	-1.0	-0.9
Selected building materials.....	13	1.013	119.9	119.3	-7.4	-0.3	0.2	-1.3	-0.5
<b>Capital goods.....</b>	2	37.832	107.8	107.8	0.7	0.1	0.2	0.2	0.0
Electrical generating equipment.....	20	3.823	114.8	115.4	0.2	0.0	-0.3	-0.3	0.5
Nonelectrical machinery.....	21	25.926	95.6	95.5	0.0	0.1	0.2	0.0	-0.1
Transportation equipment excluding motor vehicles (Dec. 2001=100).....	22	8.083	160.5	160.8	3.3	0.3	0.5	0.8	0.2
<b>Automotive vehicles, parts &amp; engines.....</b>	3	10.124	113.9	114.0	0.4	-0.1	0.0	-0.2	0.1
<b>Consumer goods, excluding automotives.....</b>	4	12.455	112.9	112.9	-1.7	-0.1	-0.7	-0.5	0.0
Nondurables, manufactured.....	40	5.541	109.0	108.8	-2.0	0.5	-1.2	-1.2	-0.2
Durables, manufactured.....	41	5.304	110.7	110.8	-1.2	0.0	-0.5	0.1	0.1

<sup>1</sup> Relative importance figures are based on 2013 trade values.

NOTES: Data may be revised in each of the three months after original publication.

Dash = Not available

**Table 3. U.S. import price indexes and percent changes for selected categories of goods: March 2014 to March 2015**

[December 2005=100, unless otherwise noted]

Description	NAICS	Relative importance Feb. 2015 <sup>1</sup>	Index		Percent change				
			Feb. 2015	Mar. 2015	Annual	Monthly			
					Mar. 2014 to Mar. 2015	Nov. 2014 to Dec. 2014	Dec. 2014 to Jan. 2015	Jan. 2015 to Feb. 2015	Feb. 2015 to Mar. 2015
<b>Nonmanufactured articles.....</b>		10.325	103.3	101.5	-42.4	-14.4	-17.4	5.0	-1.7
<b>Agriculture, forestry, fishing and hunting.....</b>	11	2.048	177.8	176.0	-8.7	2.3	-4.2	0.1	-1.0
Crop production.....	111	1.639	187.7	183.6	-9.8	3.3	-5.2	0.7	-2.2
Animal production (Dec. 2014=100).....	112	0.229	94.3	94.0	—	—	-2.3	-3.5	-0.3
Forestry and logging (Dec. 2012=100).....	113	0.114	67.3	65.8	-24.4	0.3	0.4	-1.6	-2.2
<b>Mining.....</b>	21	8.277	94.5	92.7	-46.8	-16.9	-20.3	6.3	-1.9
Mining (except oil and gas) (Dec. 2006=100).....	212	0.240	115.4	115.9	-7.1	-0.1	-1.8	-0.3	0.4
<b>Manufactured articles.....</b>		89.357	112.4	112.2	-3.7	-0.5	-1.3	-0.4	-0.2
<b>Manufactured goods, part 1.....</b>	31	11.949	125.6	124.7	-0.5	-0.2	-0.3	-0.1	-0.7
Food manufacturing.....	311	3.388	157.9	153.5	-4.3	-0.4	-1.1	0.0	-2.8
Beverage and tobacco product manufacturing.....	312	1.073	117.5	118.1	2.3	-0.1	0.3	-0.1	0.5
Textile mills (Dec. 2011=100).....	313	0.405	102.3	102.1	0.0	-0.2	-0.4	-0.4	-0.2
Textile product mills.....	314	0.884	113.1	112.9	-1.4	-0.4	-0.1	-0.4	-0.2
Apparel manufacturing.....	315	4.320	111.9	112.0	1.4	0.0	-0.1	-0.1	0.1
Leather and allied product manufacturing.....	316	1.879	124.3	124.3	1.1	0.1	0.1	0.2	0.0
<b>Manufactured goods, part 2.....</b>	32	17.319	122.3	123.5	-11.3	-1.9	-4.7	-0.6	1.0
Wood product manufacturing.....	321	0.736	118.7	116.5	-5.1	0.1	0.3	-1.2	-1.9
Paper manufacturing.....	322	1.111	110.6	109.6	-0.4	0.4	-0.4	-0.2	-0.9
Petroleum and coal products manufacturing.....	324	2.603	91.8	99.1	-40.6	-8.7	-20.4	-2.2	8.0
Chemical manufacturing.....	325	9.516	134.7	134.5	-2.3	-0.4	-1.6	-0.4	-0.1
Plastics and rubber products manufacturing.....	326	2.181	120.3	119.9	-2.7	-0.1	-0.8	-0.5	-0.3
Nonmetallic mineral product manufacturing.....	327	0.964	130.3	130.4	0.1	-0.5	0.1	0.1	0.1
<b>Manufactured goods, part 3.....</b>	33	60.089	106.3	105.9	-1.9	-0.2	-0.5	-0.3	-0.4
Primary metal manufacturing.....	331	4.227	148.3	144.0	-8.4	-0.2	-1.7	-0.9	-2.9
Fabricated metal product manufacturing.....	332	2.996	126.5	126.3	-0.1	-0.2	-0.2	-0.5	-0.2
Machinery manufacturing.....	333	7.152	119.2	119.1	-2.0	-0.2	-0.2	-0.6	-0.1
Computer and electronic product manufacturing.....	334	17.638	78.6	78.6	-1.8	-0.3	-0.5	-0.3	0.0
Electrical equipment, appliance, and component manufacturing.....	335	4.698	118.8	118.6	0.3	-0.3	-0.3	0.1	-0.2
Transportation equipment manufacturing.....	336	16.340	110.5	110.2	-1.3	-0.1	-0.5	-0.2	-0.3
Furniture and related product manufacturing.....	337	1.566	116.1	116.0	0.7	-0.4	0.1	-0.1	-0.1
Miscellaneous manufacturing.....	339	5.472	121.0	120.6	-1.3	-0.3	-0.2	0.0	-0.3

<sup>1</sup> Relative importance figures are based on 2013 trade values.

NOTES: Data may be revised in each of the three months after original publication.

Dash = Not available

**Table 4. U.S. export price indexes and percent changes for selected categories of goods: March 2014 to March 2015**

[December 2005=100, unless otherwise noted]

Description	NAICS	Relative importance Feb. 2015 <sup>1</sup>	Index		Percent change				
			Feb. 2015	Mar. 2015	Annual	Monthly			
					Mar. 2014 to Mar. 2015	Nov. 2014 to Dec. 2014	Dec. 2014 to Jan. 2015	Jan. 2015 to Feb. 2015	Feb. 2015 to Mar. 2015
<b>Nonmanufactured articles.....</b>		6.485	135.5	138.3	-29.1	0.7	-4.1	-4.0	2.1
<b>Agriculture, forestry, fishing and hunting.....</b>	11	4.263	167.1	167.8	-17.6	0.4	0.0	-2.9	0.4
Crop production.....	111	4.026	173.3	172.8	-17.9	0.6	-0.2	-3.0	-0.3
<b>Mining.....</b>	21	2.222	75.5	79.5	-45.2	1.1	-10.8	-6.0	5.3
Mining (except oil and gas).....	212	1.230	91.2	91.1	-8.8	-0.9	-2.2	-1.8	-0.1
<b>Manufactured articles.....</b>		91.958	115.5	115.4	-4.8	-1.0	-1.6	0.3	-0.1
<b>Manufactured goods, part 1.....</b>	31	7.291	147.9	145.2	-6.0	-1.1	-1.5	-1.0	-1.8
Food manufacturing.....	311	5.047	169.1	164.7	-6.9	-1.5	-2.3	-1.5	-2.6
Beverage and tobacco product manufacturing.....	312	0.614	117.6	118.2	-5.4	1.3	3.1	0.7	0.5
<b>Manufactured goods, part 2.....</b>	32	24.193	114.4	115.4	-14.5	-3.5	-5.7	0.5	0.9
Paper manufacturing.....	322	1.864	124.1	124.0	-1.2	0.2	-1.1	-0.4	-0.1
Petroleum and coal products manufacturing.....	324	5.313	104.7	110.4	-38.2	-11.9	-19.0	6.4	5.4
Chemical manufacturing.....	325	13.176	120.5	119.9	-6.1	-1.1	-2.1	-1.3	-0.5
Plastics and rubber products manufacturing.....	326	2.224	118.3	118.2	-0.3	-0.3	0.4	-0.5	-0.1
Nonmetallic mineral product manufacturing.....	327	0.817	112.7	112.7	0.0	0.2	0.2	0.3	0.0
<b>Manufactured goods, part 3.....</b>	33	60.475	112.8	112.6	-0.1	0.1	0.2	0.2	-0.2
Primary metal manufacturing.....	331	4.880	144.2	140.8	-5.4	0.8	-0.1	1.3	-2.4
Fabricated metal product manufacturing.....	332	2.987	129.5	129.3	1.4	0.3	0.8	0.2	-0.2
Machinery manufacturing.....	333	11.373	124.9	125.0	1.2	0.2	0.2	0.2	0.1
Computer and electronic product manufacturing.....	334	14.292	86.8	86.6	-1.5	0.1	0.0	-0.1	-0.2
Electrical equipment, appliance, and component manufacturing.....	335	3.716	114.7	115.3	0.7	-0.2	0.1	0.0	0.5
Transportation equipment manufacturing..	336	17.296	121.2	121.4	1.7	0.1	0.2	0.2	0.2
Furniture and related product manufacturing (Dec. 2011=100).....	337	0.381	110.2	107.9	0.7	0.4	0.6	-0.1	-2.1
Miscellaneous manufacturing.....	339	5.551	123.5	123.6	-1.1	-0.8	-0.6	0.1	0.1

<sup>1</sup> Relative importance figures are based on 2013 trade values.

NOTES: Data may be revised in each of the three months after original publication.

Dash = Not available



**Table 5. U.S. import price indexes and percent changes for selected categories of goods: March 2014 to March 2015**

[2000=100, unless otherwise noted]

Description	Harmonized system	Relative importance Feb. 2015 <sup>1</sup>	Index		Percent change				
			Feb. 2015	Mar. 2015	Annual	Monthly			
					Mar. 2014 to Mar. 2015	Nov. 2014 to Dec. 2014	Dec. 2014 to Jan. 2015	Jan. 2015 to Feb. 2015	Feb. 2015 to Mar. 2015
<b>Live animals; animal products.....</b>	I	1.396	195.2	189.4	-4.6	-1.6	-1.7	0.3	-3.0
Meat and edible meat offal.....	02	0.339	254.6	232.4	-1.9	-3.0	-2.8	2.7	-8.7
Fish and crustaceans, molluscs and other aquatic invertebrates.....	03	0.719	137.3	134.6	-9.8	-1.9	-0.9	1.2	-2.0
<b>Vegetable products.....</b>	II	1.956	202.8	199.6	-6.1	4.4	-5.7	0.9	-1.6
Edible vegetables, roots, and tubers.....	07	0.461	392.2	427.0	18.6	17.1	-20.4	1.8	8.9
Edible fruit and nuts; peel of citrus fruit or melons.....	08	0.507	101.3	99.7	-22.0	-2.1	3.9	0.0	-1.6
Coffee, tea, mate and spices.....	09	0.393	256.4	245.2	-4.7	1.3	1.6	-3.0	-4.4
<b>Animal or vegetable fats and oils (Dec. 2009=100).....</b>	III	0.275	108.1	108.0	-7.7	-2.7	1.3	-2.2	-0.1
<b>Prepared foodstuffs, beverages, and tobacco.....</b>	IV	2.802	162.4	160.6	0.4	0.3	-0.2	0.2	-1.1
Sugars and sugar confectionary (Dec. 2012=100).....	17	0.187	91.9	91.5	4.3	1.8	-0.2	0.4	-0.4
Cocoa and cocoa preparations (Dec. 2009=100).....	18	0.253	112.8	108.5	2.2	-0.8	2.1	0.4	-3.8
Preparations of cereals, flour, starch or milk; bakers' wares (Dec. 2007=100).....	19	0.280	133.3	133.2	1.5	0.0	0.1	-0.4	-0.1
Preparations of vegetables, fruit, nuts, or other parts of plants.....	20	0.344	164.5	162.4	-3.4	0.6	-1.1	-0.6	-1.3
Beverages, spirits, and vinegar.....	22	1.043	127.6	128.2	1.7	-0.1	0.1	-0.2	0.5
<b>Mineral products.....</b>	V	11.037	192.2	192.9	-45.1	-15.1	-20.0	4.0	0.4
Mineral fuels, oils and residuals, bituminous substances and mineral waxes.....	27	10.777	189.0	189.7	-45.6	-15.3	-20.4	4.1	0.4
<b>Products of the chemical or allied industries.....</b>	VI	8.652	148.4	148.4	-2.6	-0.3	-2.0	-0.5	0.0
Inorganic chemicals.....	28	0.677	305.7	299.9	-1.6	-0.5	-5.9	-4.1	-1.9
Organic chemicals.....	29	2.438	123.2	123.7	-10.2	-1.4	-5.4	-1.0	0.4
Pharmaceutical products.....	30	3.465	136.2	136.3	2.6	0.4	0.7	0.4	0.1
Fertilizers (Dec. 2009=100).....	31	0.393	114.6	114.4	0.4	0.3	-0.3	-0.4	-0.2
Tanning extracts; dye, pigments, varnish, paints & putty (Dec. 2011=100).....	32	0.215	104.5	100.0	-1.4	-0.5	-0.9	0.1	-4.3
Miscellaneous chemical products.....	38	0.548	90.2	90.1	-3.3	-0.5	-1.1	-0.6	-0.1
<b>Plastics and articles thereof; rubber and articles thereof.....</b>	VII	3.437	144.2	143.4	-3.7	-0.4	-0.7	-0.5	-0.6
Plastics and articles thereof.....	39	2.242	149.0	148.3	-1.1	-0.8	0.1	-0.3	-0.5
Rubber and articles thereof.....	40	1.195	137.5	136.3	-8.3	0.4	-2.1	-0.8	-0.9
<b>Raw hides, skins, leather, furskins, travel goods, etc.....</b>	VIII	0.718	128.4	128.3	-0.1	0.2	0.2	0.1	-0.1
Articles of leather; travel goods, bags, etc. of various materials.....	42	0.677	130.7	130.7	0.7	0.2	0.2	0.0	0.0
<b>Wood, wood charcoal, cork, straw, basketware and wickerwork.....</b>	IX	0.762	144.0	141.4	-5.0	0.1	0.2	-1.1	-1.8
Wood and articles of wood; wood charcoal (Dec. 2014=100).....	44	0.725	99.0	97.2	-	-	0.2	-1.2	-1.8
<b>Woodpulp, recovered paper, and paper products.....</b>	X	1.161	113.1	112.7	-0.7	0.3	-0.2	0.0	-0.4
Paper and paperboard; articles of paper pulp, paper or paperboard.....	48	0.772	106.9	106.5	-0.7	0.1	0.2	-0.2	-0.4
<b>Textile and textile articles.....</b>	XI	5.452	114.7	114.6	0.5	-0.2	-0.1	-0.1	-0.1

See footnotes at end of table.

**Table 5. U.S. import price indexes and percent changes for selected categories of goods: March 2014 to March 2015 — Continued**

[2000=100, unless otherwise noted]

Description	Harmonized system	Relative importance Feb. 2015 <sup>1</sup>	Index		Percent change				
			Feb. 2015	Mar. 2015	Annual	Monthly			
					Mar. 2014 to Mar. 2015	Nov. 2014 to Dec. 2014	Dec. 2014 to Jan. 2015	Jan. 2015 to Feb. 2015	Feb. 2015 to Mar. 2015
Articles of apparel and clothing accessories, knitted or crocheted.....	61	2.171	103.7	103.9	1.2	-0.1	-0.1	-0.1	0.2
Articles of apparel and clothing accessories, not knitted or crocheted.....	62	1.959	120.4	120.3	1.3	-0.1	0.0	0.1	-0.1
Made-up or worn textile articles.....	63	0.637	107.0	106.8	-1.1	-0.1	-0.2	-0.4	-0.2
<b>Headgear, umbrellas, artificial flowers, etc...</b>	XII	1.486	122.9	123.0	1.4	0.1	0.0	0.2	0.1
Footwear and parts of such articles.....	64	1.295	122.3	122.2	1.2	0.1	0.0	0.2	-0.1
<b>Stone, plaster, cement, asbestos, ceramics, glass etc.....</b>	XIII	0.894	132.3	132.4	-0.5	-0.5	-0.2	0.0	0.1
Ceramic products.....	69	0.267	138.2	138.7	-1.6	-1.6	-0.4	-0.4	0.4
Glass and glassware.....	70	0.312	129.1	129.0	-0.8	-0.1	-0.1	0.0	-0.1
<b>Pearls, stones, precious metals, imitation jewelry, and coins.....</b>	XIV	3.118	176.1	172.5	-6.0	0.3	0.4	1.4	-2.0
<b>Base metals and articles of base metals. ...</b>	XV	5.468	174.6	172.1	-5.1	-0.7	-1.7	-1.6	-1.4
Iron and steel.....	72	1.206	203.1	196.7	-11.3	-1.2	-2.1	-4.4	-3.2
Articles of iron or steel.....	73	1.699	151.3	150.4	-2.4	-0.8	-0.7	-0.8	-0.6
Copper and articles thereof.....	74	0.455	286.5	288.8	-13.6	-1.0	-3.7	-4.8	0.8
Aluminum and articles thereof.....	76	0.777	139.2	135.6	-0.4	-1.4	-2.7	0.7	-2.6
Tools, implements, cutlery, spoons and forks, of base metal; parts thereof.....	82	0.444	128.9	128.9	0.2	0.0	-0.1	0.0	0.0
Miscellaneous articles of base metal.....	83	0.516	138.0	138.4	1.8	0.0	-0.1	0.1	0.3
<b>Machinery, electrical equipment, TV image and sound recorders, parts, etc.....</b>	XVI	29.689	83.2	83.0	-1.7	-0.2	-0.4	-0.2	-0.2
Machinery and mechanical appliances; parts thereof.....	84	15.068	88.2	88.1	-1.3	-0.2	-0.4	-0.5	-0.1
Electrical machinery and equip, sound and TV recorders & reproducers, parts.....	85	14.621	78.3	78.2	-1.8	-0.4	-0.4	-0.1	-0.1
<b>Vehicles, aircraft, vessels and associated transport equipment.....</b>	XVII	13.681	114.6	114.5	-1.3	-0.1	-0.5	-0.2	-0.1
Motor vehicles and their parts.....	87	12.356	113.2	113.1	-1.4	-0.1	-0.5	-0.3	-0.1
Aircraft, spacecraft, and parts thereof (Dec. 2002=100).....	88	1.232	120.3	119.3	-0.9	0.0	0.0	0.1	-0.8
<b>Optical, photo, measuring, medical &amp; musical instruments; &amp; timepieces.....</b>	XVIII	3.880	104.0	104.2	-0.4	0.2	-0.3	-0.1	0.2
Optical, photographic, measuring and medical instruments.....	90	3.558	100.8	100.9	-0.5	0.2	-0.1	-0.2	0.1
Clocks and watches and parts thereof.....	91	0.260	142.9	143.0	-0.4	-0.1	-0.7	0.4	0.1
<b>Miscellaneous manufactured articles.....</b>	XX	4.027	113.6	113.4	0.2	0.1	-0.3	-0.2	-0.2
Furniture & stuffed furnishings; lamps & lighting fittings, nesoi; prefab bldgs.....	94	2.431	118.5	118.1	0.7	0.0	0.1	-0.3	-0.3
Toys, games and sports equipment; parts and accessories thereof.....	95	1.339	105.0	104.9	-0.6	0.0	-0.8	0.0	-0.1
Miscellaneous manufactured articles.....	96	0.257	134.9	134.9	-0.4	0.0	0.6	-0.6	0.0

<sup>1</sup> Relative importance figures are based on 2013 trade values.

NOTES: Data may be revised in each of the three months after original publication.

Dash = Not available

**Table 6. U.S. export price indexes and percent changes for selected categories of goods: March 2014 to March 2015**

[2000=100, unless otherwise noted]

Description	Harmonized system	Relative importance Feb. 2015 <sup>1</sup>	Index		Percent change				
			Feb. 2015	Mar. 2015	Annual	Monthly			
					Mar. 2014 to Mar. 2015	Nov. 2014 to Dec. 2014	Dec. 2014 to Jan. 2015	Jan. 2015 to Feb. 2015	Feb. 2015 to Mar. 2015
<b>Live animals; animal products.....</b>	I	2.025	214.9	209.7	-10.5	-4.6	-4.5	-2.8	-2.4
Meat & edible meat offal (Dec. 2006=100)...	02	1.230	172.9	163.3	-5.2	-5.1	-4.5	-2.5	-5.6
Fish and crustaceans, molluscs and other aquatic invertebrates.....	03	0.408	213.7	234.3	15.4	2.4	1.6	-0.6	9.6
<b>Vegetable products.....</b>	II	4.067	215.9	212.6	-17.1	1.1	-1.0	-3.2	-1.5
Edible fruit and nuts; peel of citrus fruit or melons.....	08	1.163	182.5	174.3	-8.4	4.3	-1.7	-1.0	-4.5
Cereals.....	10	1.042	207.5	206.0	-20.1	3.4	-3.5	-5.6	-0.7
Oilseeds and misc. grains, seeds, fruits, plants, straw and fodder.....	12	1.439	215.6	215.4	-24.0	-2.8	1.4	-4.1	-0.1
<b>Animal or vegetable fats and oils (Dec. 2009=100).....</b>	III	0.203	97.0	96.3	-16.3	0.7	-0.4	-6.9	-0.7
<b>Prepared foodstuffs, beverages, and tobacco.....</b>	IV	3.062	161.8	159.5	-5.0	0.7	-0.1	-0.3	-1.4
Preparations of vegetables, fruit, nuts or other parts of plants (Dec. 2009=100)....	20	0.400	118.4	118.5	1.5	0.0	0.9	-0.1	0.1
Beverages, spirits, and vinegar (Dec. 2008=100).....	22	0.510	110.3	110.2	-0.6	-1.2	-0.5	0.1	-0.1
Residues and waste from the food industries; prepared animal feed.....	23	0.808	244.1	237.9	-15.0	5.0	0.5	-0.3	-2.5
<b>Mineral products.....</b>	V	7.616	203.2	211.3	-39.1	-8.7	-16.2	2.6	4.0
Ores, slag and ash (Dec. 2012=100).....	26	0.493	88.7	88.5	-4.4	-2.1	-3.9	-1.2	-0.2
Mineral fuels, oils and residuals, bituminous substances and mineral waxes.....	27	6.936	195.5	204.2	-41.2	-9.4	-17.3	2.9	4.5
<b>Products of the chemical or allied industries.....</b>	VI	10.789	143.0	142.3	-4.8	-0.6	-1.6	-0.9	-0.5
Inorganic chemicals.....	28	0.832	172.6	168.8	-3.4	1.0	-0.3	-0.1	-2.2
Organic chemicals.....	29	2.928	146.1	145.8	-10.3	-3.5	-4.3	-1.6	-0.2
Pharmaceutical products.....	30	2.563	111.4	110.9	-3.9	0.9	-1.0	-1.9	-0.4
Essential oils and resinoids; perfumery cosmetic or toilet preparations.....	33	0.782	135.9	136.2	2.1	0.0	2.5	-0.3	0.2
Soap; lubricants; waxes, polishing or scouring products; candles, pastes.....	34	0.475	113.7	114.5	-4.4	0.0	-0.1	-2.9	0.7
Miscellaneous chemical products.....	38	1.897	153.1	151.2	-4.3	0.7	-1.4	0.8	-1.2
<b>Plastics and articles thereof; rubber and articles thereof.....</b>	VII	5.172	144.0	144.0	-4.3	-0.7	-1.3	-1.6	0.0
Plastics and articles thereof.....	39	4.218	139.5	139.6	-3.9	-0.8	-1.5	-1.5	0.1
Rubber and articles thereof.....	40	0.954	162.9	162.4	-6.1	-0.7	-0.7	-1.9	-0.3
<b>Raw hides, skins, leather, furskins, travel goods, etc.....</b>	VIII	0.442	148.6	148.2	-5.6	-3.1	-2.0	-0.8	-0.3
Raw hides and skins other than furskins and leather (Dec.2014=100).....	41	0.275	96.4	96.0	-	-	-2.9	-0.7	-0.4
<b>Wood, wood charcoal, cork, straw, baskets and wickerwork (Dec. 2014=100).....</b>	IX	0.629	99.9	99.3	-	-	0.7	-0.8	-0.6
<b>Woodpulp, recovered paper, and paper products.....</b>	X	2.222	123.4	123.0	-2.5	0.3	-0.9	-1.2	-0.3
Woodpulp and recovered paper.....	47	0.612	122.7	121.8	-7.2	0.5	-1.9	-3.6	-0.7
Paper and paperboard; articles of paper pulp, paper or paperboard.....	48	1.201	123.7	123.3	-1.3	0.2	-0.7	-0.2	-0.3
Printed material (Dec. 2014=100).....	49	0.409	100.3	100.3	-	-	0.3	0.0	0.0
<b>Textile and textile articles.....</b>	XI	1.788	123.4	123.0	-10.2	-0.6	-0.6	-0.6	-0.3

See footnotes at end of table.

**Table 6. U.S. export price indexes and percent changes for selected categories of goods: March 2014 to March 2015 — Continued**

[2000=100, unless otherwise noted]

Description	Harmonized system	Relative importance Feb. 2015 <sup>1</sup>	Index		Percent change				
			Feb. 2015	Mar. 2015	Annual	Monthly			
					Mar. 2014 to Mar. 2015	Nov. 2014 to Dec. 2014	Dec. 2014 to Jan. 2015	Jan. 2015 to Feb. 2015	Feb. 2015 to Mar. 2015
Cotton, including yarns and woven fabrics thereof.....	52	0.456	119.8	119.5	-24.8	-1.5	-0.3	-1.8	-0.3
<b>Stone, plaster, cement, asbestos, ceramics, glass etc.....</b>	XIII	0.816	122.6	122.7	2.7	0.2	1.7	0.2	0.1
Glass and glassware.....	70	0.422	99.6	99.8	1.9	0.4	0.5	0.2	0.2
<b>Pearls, stones, precious metals, imitation jewelry, and coins.....</b>	XIV	4.859	240.7	236.9	-5.0	0.4	-0.2	1.9	-1.6
<b>Base metals and articles of base metals. ...</b>	XV	5.226	154.6	153.9	-5.8	-0.7	-1.3	-2.0	-0.5
Iron and steel.....	72	1.241	167.9	165.8	-12.5	-2.5	-0.3	-5.9	-1.3
Copper and articles thereof.....	74	0.494	183.2	187.4	-19.6	-2.3	-4.5	-4.9	2.3
Aluminum and articles thereof.....	76	0.898	119.5	118.3	-1.3	0.1	-3.2	-1.0	-1.0
Miscellaneous articles of base metal.....	83	0.329	147.7	147.7	0.5	0.0	0.4	0.0	0.0
<b>Machinery, electrical equipment, TV image and sound recorders, parts, etc.....</b>	XVI	28.913	97.6	97.6	0.2	0.1	0.2	0.1	0.0
Machinery and mechanical appliances; parts thereof.....	84	17.374	114.0	113.9	1.2	0.0	0.4	0.4	-0.1
Electrical machinery and equipment and parts and accessories thereof.....	85	11.539	79.9	79.9	-1.4	0.3	0.0	-0.2	0.0
<b>Vehicles, aircraft, vessels and associated transport equipment.....</b>	XVII	14.412	130.5	130.6	0.9	0.1	0.2	0.1	0.1
Motor vehicles and their parts.....	87	8.976	114.9	114.9	0.3	0.0	0.0	-0.3	0.0
<b>Optical, photo, measuring, medical &amp; musical instruments; &amp; timepieces.....</b>	XVIII	6.154	107.4	107.4	-0.1	0.0	-0.1	-0.1	0.0
<b>Miscellaneous manufactured articles.....</b>	XX	1.476	111.3	110.9	0.5	0.1	0.1	0.4	-0.4
Furniture; stuffed furnishings; lamps and lighting fittings nesoi;.....	94	0.838	123.3	122.5	0.6	0.1	0.2	0.5	-0.6
Toys, games and sports equipment; parts and accessories thereof.....	95	0.477	89.8	89.8	0.6	0.0	0.1	0.1	0.0

<sup>1</sup> Relative importance figures are based on 2013 trade values.

NOTES: Data may be revised in each of the three months after original publication.

Dash = Not available

**Table 7. U.S. import price indexes and percent changes by locality of origin: March 2014 to March 2015**  
 [2000=100, unless otherwise noted]

Description	Relative importance Feb. 2015 <sup>1</sup>	Index		Percent change				
		Feb. 2015	Mar. 2015	Annual	Monthly			
				Mar. 2014 to Mar. 2015	Nov. 2014 to Dec. 2014	Dec. 2014 to Jan. 2015	Jan. 2015 to Feb. 2015	Feb. 2015 to Mar. 2015
<b>Industrialized Countries<sup>2</sup></b> .....	100.000	120.8	120.3	-11.0	-2.2	-2.9	-0.8	-0.4
Nonmanufactured articles.....	7.735	133.6	132.2	-51.1	-17.7	-17.4	-2.8	-1.0
Manufactured articles.....	91.819	119.3	119.0	-4.3	-0.3	-1.5	-0.6	-0.3
<b>Other Countries<sup>3</sup></b> .....	100.000	123.8	123.5	-10.8	-2.5	-3.3	-0.2	-0.2
Nonmanufactured articles.....	10.956	201.3	197.0	-43.3	-13.2	-17.5	-0.2	-2.1
Manufactured articles.....	88.809	106.5	106.5	-3.2	-0.3	-1.2	-0.3	0.0
<b>Canada</b> .....	100.000	125.4	124.6	-22.2	-5.9	-5.6	-1.4	-0.6
Nonmanufactured articles.....	21.497	127.2	126.4	-51.9	-18.3	-17.9	-3.0	-0.6
Manufactured articles.....	77.795	129.3	128.4	-5.9	-0.8	-1.4	-0.8	-0.7
<b>European Union<sup>4</sup></b> .....	100.000	133.5	133.5	-3.1	-0.4	-1.5	-1.1	0.0
Manufactured articles.....	99.395	130.0	130.1	-3.0	-0.4	-1.5	-1.1	0.1
<b>France (Dec. 2003=100)</b> .....	100.000	122.4	122.4	0.1	-0.3	0.2	-0.6	0.0
<b>Germany (Dec. 2003=100)</b> .....	100.000	117.4	117.1	-1.3	-0.3	0.1	-0.7	-0.3
<b>United Kingdom (Dec. 2003=100)</b> .....	100.000	120.0	120.6	-6.9	0.1	-5.7	0.0	0.5
<b>Latin America<sup>5</sup></b> .....	100.000	148.2	147.1	-15.2	-3.8	-4.8	0.3	-0.7
Nonmanufactured articles.....	17.983	218.7	212.4	-42.5	-13.2	-19.0	4.3	-2.9
Manufactured articles.....	81.588	125.5	125.2	-4.6	-0.6	-1.3	-0.6	-0.2
<b>Mexico (Dec. 2003=100)</b> .....	100.000	130.9	130.6	-8.3	-1.9	-2.6	-0.2	-0.2
Nonmanufactured articles (Dec. 2008=100).....	9.666	117.7	118.3	-41.6	-12.4	-19.1	0.7	0.5
Manufactured articles (Dec. 2008=100)...	90.026	91.6	91.3	-1.6	-0.1	-0.5	-0.2	-0.3
<b>Pacific Rim (Dec. 2003=100)<sup>6</sup></b> .....	100.000	101.2	101.0	-1.8	-0.2	-0.4	-0.2	-0.2
<b>China (Dec. 2003=100)</b> .....	100.000	103.4	103.3	-0.5	0.1	-0.2	-0.1	-0.1
<b>Japan</b> .....	100.000	97.1	97.0	-2.2	-0.5	-0.6	-0.2	-0.1
<b>Asian NICs<sup>7</sup></b> .....	100.000	87.6	86.9	-2.7	-0.2	-0.9	0.0	-0.8
<b>ASEAN (Dec. 2003=100)<sup>8</sup></b> .....	100.000	100.0	99.8	-4.5	-0.2	-1.1	-0.4	-0.2
<b>Asia Near East (Dec. 2003=100)<sup>9</sup></b> .....	100.000	170.7	168.1	-37.1	-11.7	-11.3	-4.2	-1.5

<sup>1</sup> Relative importance figures are based on 2013 trade values.

<sup>2</sup> Western Europe, Canada, Japan, Australia, New Zealand and South Africa.

<sup>3</sup> Eastern Europe, Latin America, OPEC countries, and other countries in Asia, Africa and the Western Hemisphere.

<sup>4</sup> European Union countries.

<sup>5</sup> Mexico, Central America, South America and the Caribbean.

<sup>6</sup> China, Japan, Australia, Brunei, Indonesia, Macao, Malaysia, New Zealand, Papua New Guinea, Philippines and the Asian Newly Industrialized Countries.

<sup>7</sup> Asian Newly Industrialized Countries - Hong Kong, Singapore, South Korea and Taiwan.

<sup>8</sup> Association of Southeast Asian Nations - Brunei, Cambodia, Indonesia, Laos, Malaysia, Myanmar, Philippines, Singapore, Thailand and Vietnam.

<sup>9</sup> Bahrain, Iran, Iraq, Israel, Jordan, Kuwait, Lebanon, Oman, Qatar, Saudi Arabia, Syria, United Arab Emirates and Yemen.

NOTES: Data may be revised in each of the three months after original publication.

Regions are not mutually exclusive.

Dash = Not available

**Table 8. U.S. international price indexes and percent changes for selected transportation services: March 2014 to March 2015**

[2000=100, unless otherwise noted]

Description	Relative importance Feb. 2015 <sup>1</sup>	Index		Percent change				
		Feb. 2015	Mar. 2015	Annual	Monthly			
				Mar. 2014 to Mar. 2015	Nov. 2014 to Dec. 2014	Dec. 2014 to Jan. 2015	Jan. 2015 to Feb. 2015	Feb. 2015 to Mar. 2015
<b>Air Freight</b>								
<b>Import Air Freight</b> .....	100.000	168.0	173.8	-1.6	-1.7	0.2	0.3	3.5
Europe (Dec. 2003=100).....	25.408	153.9	150.0	-17.3	-2.3	-2.7	-5.1	-2.5
Asia.....	69.263	151.0	160.0	5.1	-1.6	1.5	2.4	6.0
<b>Export Air Freight</b> .....	100.000	160.1	157.4	4.1	-1.6	4.6	-1.8	-1.7
Europe (Dec. 2006=100).....	36.354	151.5	149.0	9.8	-1.3	9.4	-1.8	-1.7
<b>Inbound Air Freight</b> .....	100.000	159.5	160.5	-2.6	-1.9	1.1	-0.6	0.6
Europe (Dec. 2003=100).....	25.676	142.8	141.0	-11.7	-2.0	-1.3	-3.7	-1.3
Asia.....	61.207	146.3	148.5	1.2	-2.1	2.3	0.7	1.5
<b>Outbound Air Freight</b> .....	100.000	150.6	149.5	0.6	-0.3	-0.7	-0.5	-0.7
Europe (Dec. 2003=100).....	33.119	170.5	168.7	1.7	0.0	-0.9	-0.1	-1.1
Asia.....	43.665	141.0	140.4	-0.8	-0.6	-1.1	-0.8	-0.4
<b>Air Passenger Fares</b>								
<b>Import Air Passenger Fares</b> .....	100.000	196.0	191.3	0.5	7.9	-6.8	-2.5	-2.4
Europe.....	50.325	241.8	232.5	9.5	0.8	3.1	2.7	-3.8
Asia.....	23.229	138.3	141.3	-4.5	16.2	-14.4	-6.2	2.2
Latin America/Caribbean.....	9.903	166.0	167.0	-1.0	10.6	-11.2	0.4	0.6
<b>Export Air Passenger Fares</b> .....	100.000	164.0	166.7	-6.7	8.3	0.4	-13.3	1.6
Europe.....	30.280	209.8	210.2	-2.9	4.2	-5.4	-1.7	0.2
Asia.....	26.852	137.3	136.6	-8.5	7.2	2.5	-17.9	-0.5
Latin America/Caribbean.....	24.320	179.7	185.3	-8.7	10.6	-0.8	-9.4	3.1

<sup>1</sup> Relative importance figures are based on 2013 trade values.

NOTES: Data may be revised in each of the three months after original publication.

Dash = Not available

## TECHNICAL NOTE

**Import and Export Merchandise and Services Price Indexes** -- All indexes use a modified Laspeyres formula and are not seasonally adjusted. Price indexes are reweighted annually, with a two-year lag in the weights. Published series use a base year of 2000=100 where possible. More detailed index series and additional information may be obtained at <http://www.bls.gov/mxp>, or by calling (202) 691-7101.

**Merchandise Goods Classification Systems** -- The merchandise price indexes are published using three classification systems. Items are classified by end use according to the Bureau of Economic Analysis Classification System, by industry according to the North American Industry Classification System (NAICS), and by product category according to the Harmonized System (HS). While classification by end use and product category are self-explanatory, some notes are in order for classifying items by industry. In the NAICS imports and exports tables, items are classified by output industry, not input industry. As an example, NAICS import index 326 (plastics and rubber products manufacturing) include outputs such as manufactured plastic rather than inputs such as petroleum. The NAICS classification structure also matches the classification system used by the PPI (Producer Price Index) to produce the NAICS primary products indexes.

**Import Price Indexes** -- Products have been classified by the Harmonized Tariff Schedule of the United States Annotated (TSUSA). Import prices are based on U.S. dollar prices paid by the U.S. importer. The prices are generally either "free on board" (f.o.b.) foreign port or "cost, insurance, and freight" (c.i.f.) U.S. port transaction prices, depending on the practices of the individual industry. The index for crude petroleum is calculated from data collected by the U.S. Department of Energy.

**Export Price Indexes** -- Products have been classified by the Harmonized Schedule B classification system of the U.S. Bureau of the Census. The prices used are generally either "free alongside ship" (f.a.s.) factory or "free on board" (f.o.b.) transaction prices, depending on the practices of the individual industry. Prices used in the grain index, excluding rice, are obtained from the U.S. Department of Agriculture.

**Services Price Indexes** -- Starting in September 2008 the Import Air Passenger Fares Indexes represent changes in the average revenue per passenger received by foreign carriers from U.S. residents and are calculated from data obtained from an airline consulting service. These data include tickets sold by travel agencies and travel websites. Tickets sold directly by the airlines are excluded, as are frequent flyer tickets generally. Starting in January 2008 the Export Air Passenger Fares Indexes represent changes in the average revenue per passenger received by U.S. carriers from foreign residents and are calculated from data collected directly from airlines. These data include frequent flyer tickets and those sold by consolidators. Taxes and fees are included in the Import Air Passenger Fares Index and excluded from the Export Air Passenger Fares Index. The Air Freight Indexes are calculated from data collected directly from airlines. These data exclude mail and passenger baggage. The scope of the service being priced is the movement of freight from airport to airport only, and does not include any ground transportation or port service. The Air Freight Indexes are presented using two definitions: Balance of Payments (which represent transactions between U.S. and foreign residents) and International (which represent transactions inbound to and outbound from the U.S.). Fact sheets specifying detailed information for each services industry are available at <http://www.bls.gov/mxp> under "MXP Publications."

**Import Indexes by Locality of Origin** -- Prices used in these indexes are a subset of the data collected for the Import Price Indexes. Beginning with January 2002, the indexes are defined by locality of origin using a nomenclature based upon the North American Industry Classification System (NAICS). Nonmanufactured goods are defined as NAICS 11 and 21 and manufactured goods are defined as NAICS 31-33.

**Revision Policy** -- To reflect the availability of late reports and corrections by respondents, monthly data may be revised in each of the three months after original publication. After three months, no further data revisions take place. So, for example, data released in the January release will be subject to revision in the releases for February, March, and April.

**Uses of the Data** -- The primary use of the indexes is to deflate trade statistics, notably the foreign trade sector of the National Income and Product Accounts constructed by the Department of Commerce. Other published indexes are useful for general market analysis. For trade in international services, Balance of Payments indexes are used for deflating National Income and Product Accounts, while International indexes are more appropriate for market analysis. Merchandise and services indexes also can be used to study U.S. competitiveness and to compute price elasticities, and the merchandise import indexes by country or region of origin are useful in terms of trade analysis.

**E-Mail Subscription** -- The U.S. Import and Export Price Indexes news release is available through an e-mail subscription service at (<http://www.bls.gov/bls/list.htm>).

**Additional Information** -- More detailed data are available on the Import/Export Price Indexes home page at (<http://www.bls.gov/mxp>). For technical assistance in using the BLS Internet site, send e-mail to ([labstat.helpdesk@bls.gov](mailto:labstat.helpdesk@bls.gov)). For Import/Export Price Index data requests, send e-mail to ([mxpinfo@bls.gov](mailto:mxpinfo@bls.gov)).

Information from this release will be made available to sensory impaired individuals upon request. Voice phone: 202-691-5200; Federal Relay Service: 1-800-877-8339.