



**Transmission of material in this release is embargoed until  
8:30 a.m. (EDT) Tuesday, October 17, 2017**

USDL-17-1401

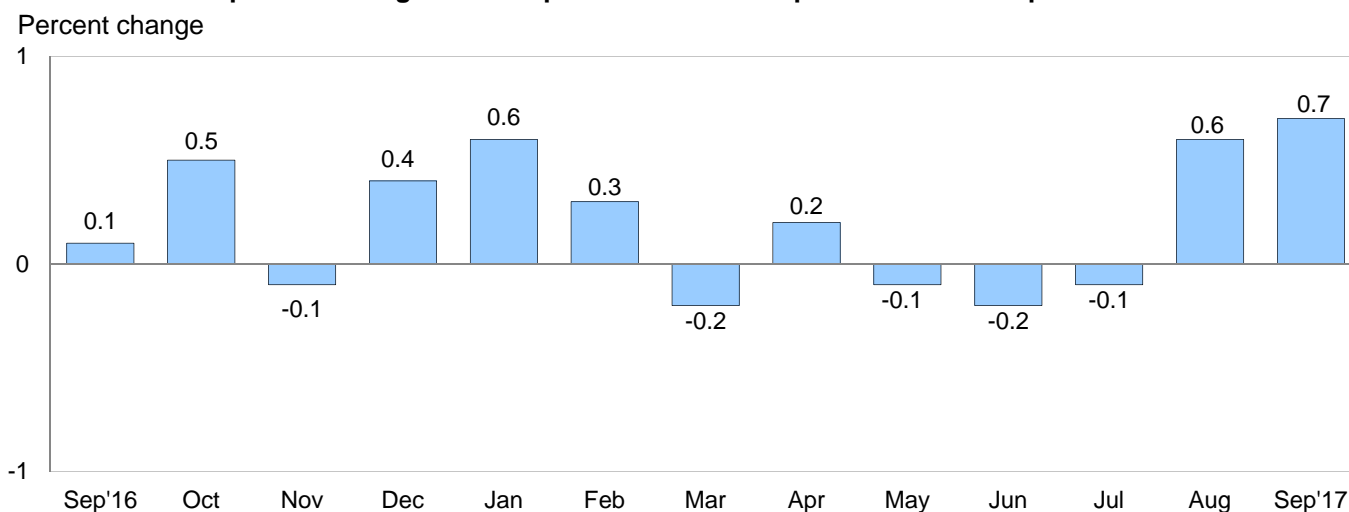
Technical information: (202) 691-7101 • MXPinfo@bls.gov • www.bls.gov/mxp

Media contact: (202) 691-5902 • PressOffice@bls.gov

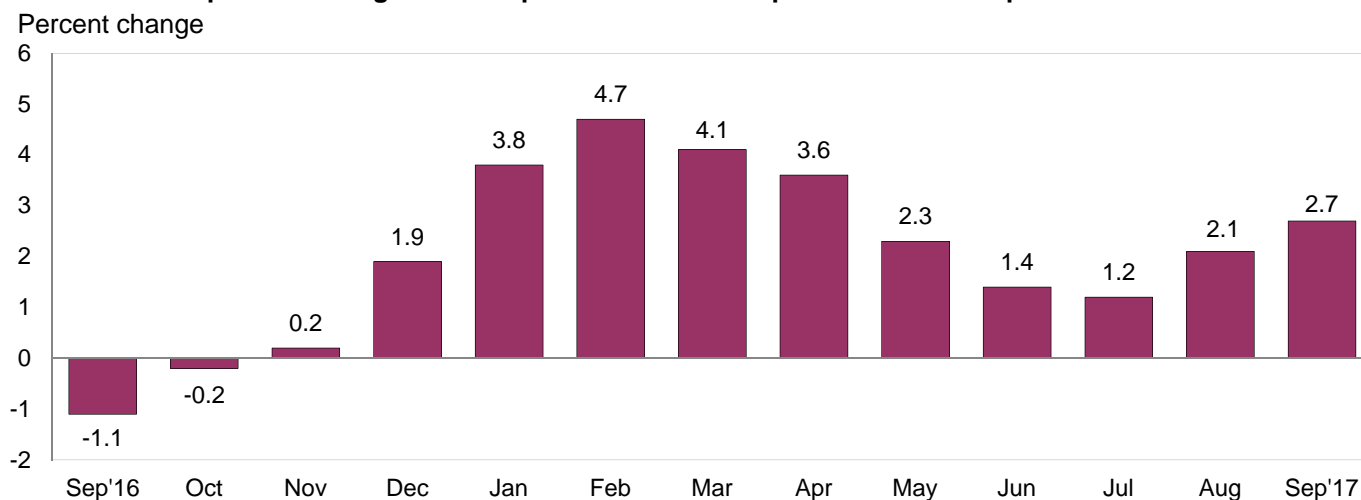
### U.S. IMPORT AND EXPORT PRICE INDEXES – SEPTEMBER 2017

U.S. import prices increased 0.7 percent in September, the U.S. Bureau of Labor Statistics reported today, after advancing 0.6 percent in August. The price index for U.S. exports rose 0.8 percent in September, after increasing 0.7 percent the previous month.

**Chart 1. One-month percent change in the Import Price Index: September 2016 – September 2017**



**Chart 2. 12-month percent change in the Import Price Index: September 2016 – September 2017**



**Hurricane Harvey and Irma:** Hurricanes Harvey and Irma had a small impact on the collection of the import and export price index data for September, but no change in the estimation procedures. For more information on the impact, please see <https://www.bls.gov/bls/hurricanes-harvey-irma-maria.htm>.

**All Imports:** Import prices rose 0.7 percent in September, the largest monthly rise since an increase of 0.7 percent in June 2016. The last time import prices advanced by more than 0.7 percent was a 1.2-percent increase in May 2016. Higher prices for both fuel and nonfuel imports contributed to the overall rise in import prices for September. Prices for U.S. imports also increased on a 12-month basis, advancing 2.7 percent.

**Fuel Imports:** Fuel prices increased 3.9 percent in September, after rising 4.4 percent in August. The monthly movements were the first advances since the index rose 0.3 percent in February, and the August rise was the largest advance since the index increased 6.1 percent in January. Prior to August, prices for import fuel fell 8.2 percent between February and July. The September advance was driven by a 4.5-percent rise in petroleum prices which more than offset a 7.8-percent drop in natural gas prices. Between September 2016 and September 2017 the price index for import fuel increased 18.2 percent, led by a 20.1-percent advance in petroleum prices over the same period. Prices for natural gas declined 16.3 percent for the year ended in September.

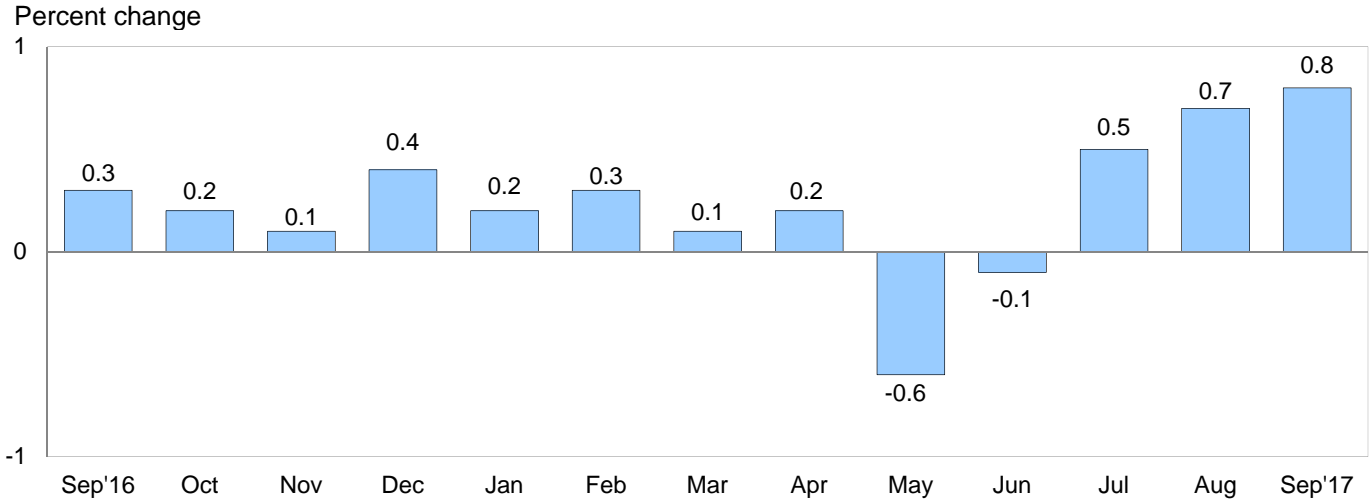
**All Imports Excluding Fuel:** The price index for nonfuel imports advanced 0.3 percent in September, following an identical increase in August. The major end-use categories largely increased in September and contributed to the rise in overall import prices. The most significant contributor was a 1.4-percent advance in nonfuel industrial supplies and materials prices, although rising prices for foods, feeds, and beverages, capital goods, and automotive vehicles also contributed to the September advance in nonfuel prices. Prices for nonfuel imports increased 1.3 percent for the year ended in September.

**Table A. Percent change in Import and Export Price Indexes, selected categories**

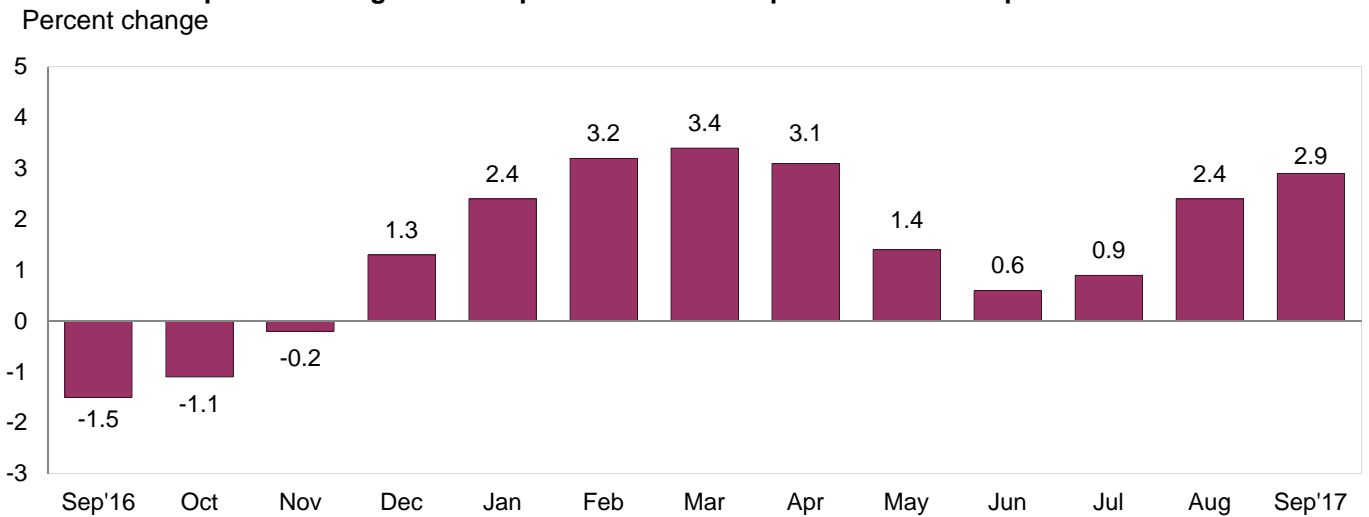
Month	IMPORTS			EXPORTS		
	All imports	Fuel imports	Nonfuel imports	All exports	Agricultural exports	Non-agricultural exports
<b>2016</b>						
September.....	0.1	1.3	0.0	0.3	-1.0	0.5
October.....	0.5	6.6	0.0	0.2	0.5	0.2
November.....	-0.1	-1.1	-0.1	0.1	0.7	0.0
December.....	0.4	5.8	0.0	0.4	-0.2	0.4
<b>2017</b>						
January.....	0.6	6.1	-0.1	0.2	0.4	0.2
February.....	0.3	0.3	0.3	0.3	1.4	0.3
March.....	-0.2	-3.0	0.2	0.1	1.1	0.0
April.....	0.2	-0.4	0.3	0.2	0.1	0.3
May.....	-0.1	-0.9	0.1	-0.6	-1.6	-0.4
June.....	-0.2	-3.6 <sup>r</sup>	0.1	-0.1	-1.4	0.0
July.....	-0.1	-0.6	-0.1	0.5	1.9	0.3
August.....	0.6	4.4 <sup>r</sup>	0.3	0.7 <sup>r</sup>	0.1	0.8 <sup>r</sup>
September.....	0.7	3.9	0.3	0.8	-0.7	1.0
Sept. 2015 to 2016.....	-1.1	-3.7	-0.6	-1.5	-3.1	-1.3
Sept. 2016 to 2017.....	2.7	18.2	1.3	2.9	2.2	3.0

r Revised

**Chart 3. One-month percent change in the Export Price Index: September 2016 – September 2017**



**Chart 4. 12-month percent change in the Export Price Index: September 2016 – September 2017**



**All Exports:** U.S. export prices rose 0.8 percent in September following a 0.7-percent increase in August. The September advance was the largest monthly rise since an increase of 0.8 percent in June 2016. The last time the index increased by more than 0.8 percent was a 1.1-percent advance in May 2016. Prices for exports rose 2.9 percent over the past year. The September advance was driven by rising prices for nonagricultural commodities; agricultural export prices decreased in September.

**Agricultural Exports:** The price index for agricultural exports declined 0.7 percent in September, the first monthly decrease since the index fell 1.4 percent in June. Lower prices for meat, wheat, and corn drove the September decline. Despite the monthly decrease, export agricultural prices rose 2.2 percent over the past year, driven by increasing meat, wheat, and vegetable prices over the 12-month period.

**All Exports Excluding Agriculture:** Nonagricultural export prices increased 1.0 percent in September following an advance of 0.8 percent in August. Rising prices for nonagricultural industrial supplies and materials drove the overall increase in nonagricultural export prices in September, though higher prices for capital goods and automotive vehicles also contributed. The price index for nonagricultural exports advanced 3.0 percent for the year ended in September, led by rising nonagricultural industrial supplies and materials prices.

## SELECTED SEPTEMBER HIGHLIGHTS

### Import Prices

**Imports by Locality of Origin:** Import prices from China recorded no change in September, after edging down 0.1 percent in August. Prices for imports from China fell 0.7 percent for the year ended in September, the smallest over-the-year decline since the index fell 0.5 percent between April 2014 and April 2015. Import prices from Japan advanced 0.2 percent in September, the first monthly increase since the index rose 0.2 percent in March. In September, rising petroleum prices contributed to higher import prices from Canada, the European Union, and Mexico. Import prices from Canada rose 0.5 percent, the price index for European Union imports advanced 0.3 percent, and prices for imports from Mexico increased 1.4 percent.

**Nonfuel Industrial Supplies and Materials:** The price index for nonfuel industrial supplies and materials rose 1.4 percent in September, after increasing 1.0 percent in August. Contributing to the September advance were a 4.4-percent increase in unfinished metals prices and a 1.8-percent rise in prices for finished metals.

**Finished Goods:** Import prices for the finished goods categories were mixed in September. Prices for capital goods rose 0.1 percent following an identical increase in August. The advance was driven by a 1.6-percent rise in prices for excavating, paving, and construction machinery. The price index for automotive vehicles rose 0.1 percent and the price index for consumer goods fell 0.1 percent.

**Foods, Feeds, and Beverages:** Import foods, feeds, and beverages prices advanced 1.8 percent in September, the largest increase since a 3.1-percent rise in July 2016. The increase was led by a 12.5-percent rise in fruit prices which more than offset falling fish and shellfish prices.

**Transportation Services:** Import air passenger fares rose 8.5 percent in September after declining 10.6 percent in August. Higher European and Asian fares contributed to the September advance, which was the largest monthly increase since the index rose 8.9 percent in June 2015. Import air passenger fares decreased 3.7 percent over the past year. The price index for import air freight rose 0.4 percent in September and 19.6 percent over the past 12 months.

### Export Prices

**Nonagricultural Industrial Supplies and Materials:** Nonagricultural industrial supplies and materials export prices increased 3.1 percent in September after a 1.9-percent advance in August. The September increase was led by a 6.6-percent rise in fuel prices, with higher prices for nonferrous metals and chemicals also contributing to the overall advance.

**Finished Goods:** Export price indexes for both capital goods and automotive vehicles rose 0.1 percent in September. Capital goods prices have not recorded a monthly decline since a 0.1-percent drop in October 2016, and the index advanced 1.2 percent over the past 12-months. The September increase was the second consecutive month in which prices for automotive vehicles advanced 0.1 percent, led by higher prices for passenger cars. The price index for consumer goods recorded no change in September.

**Transportation Services:** Export air passenger fares declined 8.7 percent in September, driven by a 20.7-percent decline in Asian fares which more than offset a 13.5-percent increase in European fares. Despite the September decline, the index rose 1.2 percent from September 2016 to September 2017. The price index for export air freight rose 0.2 percent in September and 3.1 percent over the past 12 months.

---

**Import and Export Price Index data for October 2017 are scheduled for release on Thursday, November 16, 2017 at 8:30 a.m. (EST).**

**Table 1. U.S. import price indexes and percent changes for selected categories of goods: September 2016 to September 2017**

[2000=100, unless otherwise noted]

Description	End Use	Relative importance Aug. 2017 <sup>1</sup>	Index		Percent change				
			Aug. 2017	Sept. 2017	Annual	Monthly			
					Sept. 2016 to Sept. 2017	May 2017 to June 2017	June 2017 to July 2017	July 2017 to Aug. 2017	Aug. 2017 to Sept. 2017
<b>All commodities</b> .....		100.000	123.0	123.8	2.7	-0.2	-0.1	0.6	0.7
<b>All imports excluding food and fuels (Dec. 2010=100)</b> .....		84.598	99.1	99.3	1.1	0.0	0.0	0.2	0.2
<b>All imports excluding petroleum</b> .....		91.546	112.2	112.5	1.2	0.1	-0.1	0.3	0.3
<b>All imports excluding fuels (Dec. 2001=100)</b> .....		90.933	116.3	116.7	1.3	0.1	-0.1	0.3	0.3
<b>Foods, feeds, &amp; beverages</b> .....	0	6.236	182.4	185.7	2.7	1.1	-0.1	0.2	1.8
Agricultural foods, feeds & beverages, excluding distilled beverages.....	00	4.896	200.7	205.7	3.4	1.3	0.1	0.4	2.5
Nonagricultural foods (fish, distilled beverages).....	01	1.340	141.0	139.7	-0.1	0.2	-0.4	-0.3	-0.9
<b>Industrial supplies &amp; materials</b> .....	1	22.678	169.6	173.7	10.8	-1.4	-0.5	2.3	2.4
Industrial supplies & materials excluding petroleum.....		14.407	148.6	150.2	5.7	-0.1	-0.4	0.7	1.1
Industrial supplies & materials excluding fuels (Dec. 2001=100).....		13.645	168.8	171.2	6.3	0.0	-0.4	1.0	1.4
Industrial supplies & materials, durable....		8.565	160.9	164.2	8.6	0.2	-0.1	1.6	2.1
Industrial supplies & materials nondurable excluding petroleum.....		5.659	133.2	132.8	1.7	-0.4	-0.9	-0.4	-0.3
Fuels & lubricants.....	10	9.067	172.6	179.3	18.2	-3.6	-0.6	4.4	3.9
Petroleum & petroleum products.....	100	8.454	186.6	195.0	20.1	-3.8	-0.6	5.0	4.5
Crude.....	10000	5.956	189.9	195.1	18.5	-5.8	0.9	4.4	2.7
Fuels, n.e.s.-coals & gas.....	101	0.459	96.6	91.1	-6.6	-0.7	-2.2	-4.3	-5.7
Gas-natural.....	10110	0.335	74.6	68.8	-16.3	-0.8	-3.1	-5.9	-7.8
Paper & paper base stocks.....	11	0.545	107.4	106.8	0.9	0.4	0.7	-0.6	-0.6
Materials associated with nondurable supplies & materials.....	12	4.569	152.5	153.1	2.8	-0.5	-0.9	0.0	0.4
Selected building materials.....	13	1.501	150.6	149.3	8.7	-0.6	1.1	2.2	-0.9
Unfinished metals related to durable goods.....	14	3.538	216.4	226.0	12.9	0.3	-1.4	2.5	4.4
Finished metals related to durable goods.....	15	1.754	152.1	154.9	6.5	0.7	0.5	0.7	1.8
Nonmetals related to durable goods.....	16	1.704	110.4	110.4	2.2	0.1	0.9	0.2	0.0
<b>Capital goods</b> .....	2	27.498	89.2	89.3	0.3	0.2	0.1	0.1	0.1
Electric generating equipment.....	20	3.320	116.9	117.1	1.0	0.2	0.3	0.3	0.2
Nonelectrical machinery.....	21	21.627	81.8	81.8	0.4	0.2	0.2	0.1	0.0
Transportation equipment excluding motor vehicles (Dec. 2001=100).....	22	2.550	134.2	134.3	-1.5	0.0	-0.1	-0.1	0.1
<b>Automotive vehicles, parts &amp; engines</b> .....	3	16.238	110.3	110.4	0.0	-0.2	-0.2	0.1	0.1
<b>Consumer goods, excluding automobiles</b> .....	4	27.350	106.9	106.8	0.2	0.0	0.0	0.0	-0.1
Nondurables, manufactured.....	40	13.429	121.5	121.5	1.8	0.1	-0.2	0.0	0.0
Durables, manufactured.....	41	12.616	93.2	93.1	-0.9	0.0	0.1	0.1	-0.1
Nonmanufactured consumer goods.....	42	1.306	114.4	114.2	-3.6	-1.2	-0.1	-0.4	-0.2

<sup>1</sup> Relative importance figures are based on 2015 trade values.

NOTES: Data may be revised in each of the 3 months after original publication.

Dash = Not available

**Table 2. U.S. export price indexes and percent changes for selected categories of goods: September 2016 to September 2017**

[2000=100, unless otherwise noted]

Description	End Use	Relative importance Aug. 2017 <sup>1</sup>	Index		Percent change				
			Aug. 2017	Sept. 2017	Annual Sept. 2016 to Sept. 2017	Monthly			
						May 2017 to June 2017	June 2017 to July 2017	July 2017 to Aug. 2017	Aug. 2017 to Sept. 2017
<b>All commodities.....</b>		100.000	123.0	124.0	2.9	-0.1	0.5	0.7	0.8
<b>Agricultural commodities.....</b>		9.403	178.3	177.1	2.2	-1.4	1.9	0.1	-0.7
<b>All exports excluding food and fuels (Dec. 2010=100).....</b>		83.113	99.2	99.6	1.2	0.0	0.2	0.3	0.4
<b>Nonagricultural commodities.....</b>		90.597	118.8	120.0	3.0	0.0	0.3	0.8	1.0
<b>Foods, feeds, &amp; beverages.....</b>	0	8.761	180.7	179.6	2.6	-1.5	2.2	0.2	-0.6
Agricultural foods, feeds & beverages, excluding distilled beverages.....	00	8.140	179.8	178.5	2.5	-1.4	2.1	0.1	-0.7
Nonagricultural foods (fish, distilled beverages).....	01	0.621	200.8	201.9	4.6	-3.2	3.8	0.5	0.5
<b>Industrial supplies &amp; materials.....</b>	1	29.982	149.0	153.4	8.1	-0.1	0.7	1.8	3.0
Industrial supplies & materials, durable....		10.600	158.6	162.8	5.2	-0.5	-0.6	1.4	2.6
Industrial supplies & materials, nondurable.....		19.404	144.7	149.2	9.9	0.2	1.3	2.0	3.1
Agricultural industrial supplies & materials.....	10	1.263	174.4	173.7	0.5	-1.4	0.5	-0.4	-0.4
<b>Nonagricultural industrial supplies &amp; materials.....</b>		28.720	148.2	152.8	8.4	0.0	0.6	1.9	3.1
Fuels & lubricants.....	11	8.147	171.4	182.7	23.2	0.0	1.6	5.0	6.6
Nonagricultural supplies & materials excluding fuels & building materials....	12	19.534	151.8	154.5	3.4	0.0	0.3	0.7	1.8
Selected building materials.....	13	1.038	121.1	121.7	4.2	-0.4	0.2	1.0	0.5
<b>Capital goods.....</b>	2	38.166	108.0	108.1	1.2	0.1	0.2	0.1	0.1
Electrical generating equipment.....	20	3.952	113.1	113.2	1.1	-0.2	0.3	0.2	0.1
Nonelectrical machinery.....	21	24.963	94.1	94.0	0.2	0.0	0.2	0.2	-0.1
Transportation equipment excluding motor vehicles (Dec. 2001=100).....	22	9.252	171.0	171.2	3.8	0.1	0.2	0.1	0.1
<b>Automotive vehicles, parts &amp; engines.....</b>	3	10.284	113.3	113.4	0.6	-0.1	0.0	0.1	0.1
<b>Consumer goods, excluding automotives.....</b>	4	12.806	109.2	109.2	-1.3	0.2	0.4	0.3	0.0
Nondurables, manufactured.....	40	6.208	105.2	105.4	-1.2	0.1	0.7	0.2	0.2
Durables, manufactured.....	41	5.204	107.8	107.7	-0.3	0.3	0.3	0.3	-0.1

<sup>1</sup> Relative importance figures are based on 2015 trade values.

NOTES: Data may be revised in each of the 3 months after original publication.

Dash = Not available

**Table 3. U.S. import price indexes and percent changes for selected industries: September 2016 to September 2017**

[December 2005=100, unless otherwise noted]

Description	NAICS	Relative importance Aug. 2017 <sup>1</sup>	Index		Percent change				
			Aug. 2017	Sept. 2017	Annual	Monthly			
					Sept. 2016 to Sept. 2017	May 2017 to June 2017	June 2017 to July 2017	July 2017 to Aug. 2017	Aug. 2017 to Sept. 2017
<b>Nonmanufacturing.....</b>		8.656	95.6	98.2	14.1	-3.3	0.3	2.9	2.7
<b>Agriculture, forestry, fishing and hunting.....</b>	11	2.080	187.2	195.9	5.3	1.3	-1.0	0.7	4.6
Crop production.....	111	1.672	201.2	213.9	4.7	1.9	-0.8	0.5	6.3
Animal production (Dec. 2014=100).....	112	0.210	80.8	74.5	-1.7	1.6	-1.0	-0.1	-7.8
<b>Mining.....</b>	21	6.575	84.7	86.6	17.2	-4.8	0.6	3.7	2.2
Oil and gas extraction.....	211	6.279	83.9	85.8	16.7	-5.3	0.6	4.0	2.3
Mining (except oil and gas) (Dec. 2006=100).....	212	0.296	117.0	116.7	22.5	7.9	0.4	-2.0	-0.3
<b>Manufacturing.....</b>		91.050	110.2	110.7	1.7	0.1	-0.2	0.4	0.5
<b>Manufacturing, part 1.....</b>	31	11.956	124.6	124.7	0.7	0.2	0.1	0.1	0.1
Food manufacturing.....	311	3.512	157.0	157.2	2.2	0.6	0.1	0.1	0.1
Beverage and tobacco product manufacturing.....	312	1.065	118.9	119.3	1.2	0.3	0.3	-0.1	0.3
Textile mills (Dec. 2011=100).....	313	0.399	98.5	98.9	1.1	0.0	0.1	0.2	0.4
Textile product mills.....	314	0.934	108.9	109.3	0.3	0.1	0.4	-0.1	0.4
Apparel manufacturing.....	315	4.203	111.1	111.2	0.0	0.0	0.1	0.1	0.1
Leather and allied product manufacturing.....	316	1.842	122.8	122.6	-0.3	0.0	-0.2	0.0	-0.2
<b>Manufacturing, part 2.....</b>	32	17.551	120.6	121.8	5.6	-0.1	-0.6	0.9	1.0
Wood product manufacturing.....	321	0.937	132.8	131.7	13.8	-1.8	1.7	3.3	-0.8
Paper manufacturing.....	322	1.027	105.3	104.9	0.4	0.3	0.5	-0.3	-0.4
Printing and related support activities (Dec. 2016=100).....	323	0.219	98.6	98.6	-	-0.1	0.0	-1.4	0.0
Petroleum and coal products manufacturing.....	324	2.259	83.0	90.2	22.2	1.1	-4.1	6.3	8.7
Chemical manufacturing.....	325	9.856	134.9	134.9	3.9	-0.1	-0.4	-0.1	0.0
Plastics and rubber products manufacturing.....	326	2.248	118.8	118.6	0.9	-0.2	0.6	0.3	-0.2
Nonmetallic mineral product manufacturing.....	327	1.006	128.2	128.2	-0.9	0.0	-0.2	0.2	0.0
<b>Manufacturing, part 3.....</b>	33	61.543	103.9	104.2	0.7	0.1	0.0	0.3	0.3
Primary metal manufacturing.....	331	4.224	143.2	148.6	12.6	0.4	-0.7	1.5	3.8
Fabricated metal product manufacturing.....	332	3.119	123.7	124.9	2.3	0.2	0.3	0.5	1.0
Machinery manufacturing.....	333	7.143	117.5	117.9	1.2	0.3	0.2	0.7	0.3
Computer and electronic product manufacturing.....	334	17.601	76.0	75.8	-0.7	0.1	0.0	0.1	-0.3
Electrical equipment, appliance, and component manufacturing.....	335	4.927	115.1	115.2	0.6	0.0	0.3	0.2	0.1
Transportation equipment manufacturing.....	336	17.476	109.3	109.4	-0.2	-0.2	-0.1	0.0	0.1
Furniture and related product manufacturing.....	337	1.733	115.5	115.6	0.6	0.0	0.0	0.2	0.1
Miscellaneous manufacturing.....	339	5.322	117.7	117.9	-1.6	0.1	0.0	0.2	0.2

<sup>1</sup> Relative importance figures are based on 2015 trade values.

NOTES: Data may be revised in each of the 3 months after original publication.

Dash = Not available

**Table 4. U.S. export price indexes and percent changes for selected industries: September 2016 to September 2017**

[December 2005=100, unless otherwise noted]

Description	NAICS	Relative importance Aug. 2017 <sup>1</sup>	Index		Percent change				
			Aug. 2017	Sept. 2017	Annual Sept. 2016 to Sept. 2017	Monthly			
						May 2017 to June 2017	June 2017 to July 2017	July 2017 to Aug. 2017	Aug. 2017 to Sept. 2017
<b>Nonmanufacturing.....</b>		7.361	132.4	133.7	9.4	-2.8	4.7	-1.6	1.0
<b>Agriculture, forestry, fishing and hunting.....</b>	11	4.496	152.2	150.8	1.1	-3.7	3.2	-0.7	-0.9
Crop production.....	111	4.144	158.1	156.5	1.0	-3.5	3.2	-0.8	-1.0
<b>Mining.....</b>	21	2.865	83.3	86.5	24.5	-1.5	7.1	-2.9	3.8
Mining (except oil and gas).....	212	1.243	103.6	106.8	32.8	0.2	1.7	1.2	3.1
<b>Manufacturing.....</b>		91.085	113.1	114.0	2.4	0.1	0.2	0.8	0.8
<b>Manufacturing, part 1.....</b>	31	7.139	139.6	139.1	2.6	0.3	0.7	0.4	-0.4
Food manufacturing.....	311	4.825	159.1	158.3	3.9	0.5	0.8	0.7	-0.5
Beverage and tobacco product manufacturing.....	312	0.714	113.9	114.8	1.7	-0.7	2.9	-0.1	0.8
Textile mills (Dec. 2016=100).....	313	0.666	100.8	101.1	–	-0.2	-0.3	-0.1	0.3
Leather and allied product manufacturing (Dec. 2016=100).....	316	0.277	96.8	96.6	–	-0.2	-0.4	-1.6	-0.2
<b>Manufacturing, part 2.....</b>	32	24.114	108.9	111.7	5.7	0.1	0.6	2.3	2.6
Paper manufacturing.....	322	1.671	120.9	121.5	1.1	1.8	2.4	0.2	0.5
Petroleum and coal products manufacturing.....	324	5.415	98.3	106.4	24.2	0.9	-0.8	9.5	8.2
Chemical manufacturing.....	325	13.134	113.8	115.1	1.1	-0.3	1.0	0.3	1.1
Plastics and rubber products manufacturing.....	326	2.284	114.4	114.5	0.2	-0.4	-0.3	0.5	0.1
Nonmetallic mineral product manufacturing.....	327	0.842	113.7	114.2	1.2	0.1	0.1	0.2	0.4
<b>Manufacturing, part 3.....</b>	33	59.832	112.2	112.5	1.2	0.1	0.0	0.3	0.3
Primary metal manufacturing.....	331	3.997	137.4	142.6	3.5	0.1	-2.0	1.9	3.8
Fabricated metal product manufacturing... ..	332	3.301	138.2	138.2	5.9	0.0	-0.1	0.1	0.0
Machinery manufacturing.....	333	10.238	126.0	126.2	0.2	0.1	0.2	0.2	0.2
Computer and electronic product manufacturing.....	334	14.107	82.8	82.6	-0.7	0.0	0.1	0.0	-0.2
Electrical equipment, appliance, and component manufacturing.....	335	3.980	113.7	113.8	1.5	0.0	0.4	0.2	0.1
Transportation equipment manufacturing..	336	18.423	124.6	124.7	2.1	0.1	0.1	0.1	0.1
Furniture and related product manufacturing (Dec. 2011=100).....	337	0.452	117.4	117.5	-0.3	0.0	-0.1	0.0	0.1
Miscellaneous manufacturing.....	339	5.334	119.3	119.5	-0.2	0.3	0.3	0.3	0.2

<sup>1</sup> Relative importance figures are based on 2015 trade values.

NOTES: Data may be revised in each of the 3 months after original publication.

Dash = Not available



**Table 5. U.S. import price indexes and percent changes for selected categories of goods: September 2016 to September 2017**

[2000=100, unless otherwise noted]

Description	Harmoni- zied system	Relative importance Aug. 2017 <sup>1</sup>	Index		Percent change				
			Aug. 2017	Sept. 2017	Annual	Monthly			
					Sept. 2016 to Sept. 2017	May 2017 to June 2017	June 2017 to July 2017	July 2017 to Aug. 2017	Aug. 2017 to Sept. 2017
<b>Live animals; animal products.....</b>	I	1.503	194.7	190.9	0.2	1.2	-0.8	-1.0	-2.0
Meat and edible meat ofal.....	02	0.447	246.7	249.5	4.6	1.6	-0.9	-2.4	1.1
Fish and crustaceans, molluscs and other aquatic invertebrates.....	03	0.734	140.3	137.5	-4.5	0.1	-1.5	-1.0	-2.0
<b>Vegetable products.....</b>	II	2.108	221.6	234.6	4.6	1.3	-1.1	0.7	5.9
Edible vegetables, roots, and tubers.....	07	0.399	454.8	468.5	-10.9	9.8	-0.9	-1.9	3.0
Edible fruit and nuts; peel of citrus fruit or melons.....	08	0.901	133.9	152.0	19.5	1.1	-2.7	2.1	13.5
Coffee, tea, mate and spices.....	09	0.362	233.3	229.4	-2.7	-1.4	2.6	0.3	-1.7
<b>Animal or vegetable fats and oils (Dec. 2009=100).....</b>	III	0.304	116.4	118.6	7.0	1.6	0.1	1.0	1.9
<b>Prepared foodstuffs, beverages, and tobacco.....</b>	IV	2.721	162.5	163.0	1.4	0.5	0.6	0.5	0.3
Sugars and sugar confectionary (Dec. 2012=100).....	17	0.184	85.9	87.0	0.2	0.8	0.1	-0.9	1.3
Cocoa and cocoa preparations (Dec. 2009=100).....	18	0.194	95.6	96.0	-16.2	4.0	-1.8	1.0	0.4
Preparations of vegetables, fruit, nuts, or other parts of plants.....	20	0.364	169.3	171.0	7.2	0.0	2.2	0.4	1.0
Beverages, spirits, and vinegar.....	22	1.004	128.5	128.9	0.9	0.3	0.2	-0.2	0.3
<b>Mineral products.....</b>	V	8.984	172.8	179.2	18.7	-3.4	-0.5	4.2	3.7
Mineral fuels, oils and residuals, bituminous substances and mineral waxes.....	27	8.722	170.2	176.7	18.9	-3.7	-0.5	4.4	3.8
<b>Products of the chemical or allied industries.....</b>	VI	9.291	151.3	151.3	3.6	0.1	-0.3	-0.2	0.0
Inorganic chemicals.....	28	0.538	270.7	259.6	2.0	-2.1	-1.1	-2.2	-4.1
Organic chemicals.....	29	2.380	123.3	124.5	2.7	0.2	-0.4	0.2	1.0
Pharmaceutical products.....	30	4.335	148.7	148.4	5.5	0.1	-0.4	0.1	-0.2
Fertilizers (Dec. 2009=100).....	31	0.245	69.7	69.8	-1.0	0.1	-1.2	-3.7	0.1
Tanning extracts; dye, pigments, varnish, paints & putty (Dec. 2011=100).....	32	0.195	108.9	106.6	4.9	1.5	0.4	-0.1	-2.1
Essential oils and resinoids (Dec. 2016=100).....	33	0.547	100.4	101.0	-	0.1	0.6	0.5	0.6
Miscellaneous chemical products.....	38	0.690	104.9	105.0	3.0	0.5	1.0	0.0	0.1
<b>Plastics and articles thereof; rubber and articles thereof.....</b>	VII	3.451	139.9	140.2	2.4	-0.6	0.0	0.4	0.2
Plastics and articles thereof.....	39	2.198	142.2	142.2	1.5	-0.2	0.6	0.3	0.0
Rubber and articles thereof.....	40	1.253	137.3	138.1	4.1	-1.1	-1.2	0.6	0.6
<b>Raw hides, skins, leather, furskins, travel goods, etc.....</b>	VIII	0.686	123.7	124.1	0.6	0.0	0.1	0.0	0.3
Articles of leather; travel goods, bags, etc. of various materials.....	42	0.655	129.0	129.4	0.6	0.0	0.2	0.0	0.3
<b>Wood, wood charcoal, cork, straw, basketware and wickerwork.....</b>	IX	0.974	161.7	160.4	13.8	-1.3	1.6	3.2	-0.8
Wood and articles of wood; wood charcoal (Dec. 2014=100).....	44	0.948	111.5	110.6	14.1	-1.4	1.6	3.2	-0.8
<b>Woodpulp, recovered paper, and paper products.....</b>	X	1.086	110.1	109.9	0.8	0.2	0.3	-0.6	-0.2
Paper and paperboard; articles of paper pulp, paper or paperboard.....	48	0.718	102.9	102.5	-1.7	-0.1	-0.1	0.0	-0.4
Printed matter (Dec. 2015=100).....	49	0.217	104.5	104.5	3.6	0.0	0.0	-1.4	0.0
<b>Textile and textile articles.....</b>	XI	5.356	113.4	113.5	0.2	0.0	0.2	0.1	0.1

See footnotes at end of table.

**Table 5. U.S. import price indexes and percent changes for selected categories of goods: September 2016 to September 2017 — Continued**  
 [2000=100, unless otherwise noted]

Description	Harmonized system	Relative importance Aug. 2017 <sup>1</sup>	Index		Percent change				
			Aug. 2017	Sept. 2017	Annual	Monthly			
					Sept. 2016 to Sept. 2017	May 2017 to June 2017	June 2017 to July 2017	July 2017 to Aug. 2017	Aug. 2017 to Sept. 2017
Articles of apparel and clothing accessories, knitted or crocheted.....	61	2.204	104.0	104.0	0.4	0.1	0.2	0.3	0.0
Articles of apparel and clothing accessories, not knitted or crocheted.....	62	1.830	118.9	118.9	-0.5	-0.1	0.0	0.0	0.0
Made-up or worn textile articles.....	63	0.652	103.7	103.8	0.4	0.0	0.0	0.0	0.1
<b>Headgear, umbrellas, artificial flowers, etc.....</b>	XII	1.515	121.9	121.6	-0.7	0.0	-0.3	0.0	-0.2
Footwear and parts of such articles.....	64	1.283	121.0	120.7	-0.7	0.0	-0.4	0.1	-0.2
<b>Stone, plaster, cement, asbestos, ceramics, glass etc.....</b>	XIII	0.943	130.3	130.5	-0.3	0.1	-0.2	0.4	0.2
Articles of stone, plaster, cement, asbestos, or mica (Dec. 2015=100).....	68	0.326	96.7	96.7	-1.1	0.5	0.1	0.1	0.0
Ceramic products.....	69	0.270	135.6	135.7	-1.1	-0.2	-0.7	0.4	0.1
Glass and glassware.....	70	0.347	130.9	131.2	1.0	0.0	0.1	0.6	0.2
<b>Pearls, stones, precious metals, imitation jewelry, and coins.....</b>	XIV	2.821	170.6	174.9	-1.0	1.2	-1.9	2.0	2.5
<b>Base metals and articles of base metals. ...</b>	XV	5.584	168.3	172.0	10.0	-0.1	0.2	0.6	2.2
Iron and steel.....	72	1.359	197.2	200.7	16.6	-1.0	-0.8	1.1	1.8
Articles of iron or steel.....	73	1.687	143.5	145.3	5.9	1.3	0.8	-1.1	1.3
Copper and articles thereof.....	74	0.404	285.5	300.7	24.3	0.0	2.1	5.1	5.3
Aluminum and articles thereof.....	76	0.805	128.7	132.6	11.0	-0.8	0.2	0.0	3.0
Tools, implements, cutlery, spoons and forks, of base metal; parts thereof.....	82	0.435	123.0	123.0	0.5	-0.2	0.1	0.4	0.0
Miscellaneous articles of base metal.....	83	0.521	136.8	137.6	0.8	-0.1	-0.1	0.3	0.6
<b>Machinery, electrical equipment, TV image and sound recorders, parts, etc.....</b>	XVI	29.863	80.7	80.7	0.0	0.0	0.2	0.1	0.0
Machinery and mechanical appliances; parts thereof.....	84	14.873	86.2	86.3	0.6	0.1	0.2	0.2	0.1
Electrical machinery and equip, sound and TV recorders & reproducers, parts.....	85	14.990	75.4	75.3	-0.7	0.0	0.1	0.0	-0.1
<b>Vehicles, aircraft, vessels and associated transport equipment.....</b>	XVII	14.588	114.0	114.1	0.2	-0.1	-0.2	0.1	0.1
Motor vehicles and their parts.....	87	13.132	113.0	113.1	0.4	0.0	-0.2	0.1	0.1
Aircraft, spacecraft, and parts thereof (Dec. 2002=100).....	88	1.324	115.4	115.5	-2.8	-0.2	-0.3	-0.2	0.1
<b>Optical, photo, measuring, medical &amp; musical instruments; &amp; timepieces.....</b>	XVIII	3.863	101.7	102.0	-1.4	0.2	0.2	0.1	0.3
Optical, photographic, measuring and medical instruments.....	90	3.533	98.3	98.6	-1.6	0.2	0.2	0.1	0.3
Clocks and watches and parts thereof.....	91	0.270	143.9	143.9	1.1	0.4	1.0	0.0	0.0
<b>Miscellaneous manufactured articles.....</b>	XX	4.284	111.1	111.1	-0.6	0.0	0.1	0.1	0.0
Furniture & stuffed furnishings; lamps & lighting fittings, nesoi; prefab bldgs.....	94	2.653	116.8	116.8	0.3	-0.1	0.2	0.2	0.0
Toys, games and sports equipment; parts and accessories thereof.....	95	1.356	101.3	101.3	-1.9	0.0	0.0	-0.1	0.0
Miscellaneous manufactured articles.....	96	0.275	129.7	129.7	-3.3	-0.2	0.0	0.0	0.0

<sup>1</sup> Relative importance figures are based on 2015 trade values.

NOTES: Data may be revised in each of the 3 months after original publication.

Dash = Not available

**Table 6. U.S. export price indexes and percent changes for selected categories of goods: September 2016 to September 2017**

[2000=100, unless otherwise noted]

Description	Harmoni- zied system	Relative importance Aug. 2017 <sup>1</sup>	Index		Percent change				
			Aug. 2017	Sept. 2017	Annual	Monthly			
					Sept. 2016 to Sept. 2017	May 2017 to June 2017	June 2017 to July 2017	July 2017 to Aug. 2017	Aug. 2017 to Sept. 2017
<b>Live animals; animal products.....</b>	I	1.965	213.0	209.0	9.3	1.6	2.5	0.3	-1.9
Meat & edible meat offal (Dec. 2006=100)...	02	1.169	172.1	167.3	14.3	2.8	2.6	0.4	-2.8
Fish and crustaceans, mollusks and aquatic invertebrates (Dec. 2016=100).....	03	0.406	109.5	110.1	-	-4.4	5.5	0.5	0.5
<b>Vegetable products.....</b>	II	4.207	192.1	190.8	1.7	-3.7	3.2	-0.5	-0.7
Edible fruit and nuts; peel of citrus fruit or melons.....	08	0.829	139.9	141.8	-0.1	-3.2	3.1	1.9	1.4
Cereals.....	10	1.231	181.1	174.2	6.0	1.3	7.6	-5.1	-3.8
Oilseeds and misc. grains, seeds, fruits, plants, straw and fodder.....	12	1.649	200.5	199.8	-2.5	-2.8	4.1	1.2	-0.3
<b>Prepared foodstuffs, beverages, and tobacco.....</b>	IV	3.074	148.8	149.5	0.3	-0.6	0.5	0.2	0.5
Preparations of vegetables, fruit, nuts or other parts of plants (Dec. 2009=100)....	20	0.381	117.0	116.6	-0.9	0.0	0.1	-0.1	-0.3
Beverages, spirits, and vinegar (Dec. 2008=100).....	22	0.551	112.2	113.0	2.2	-0.6	0.2	0.7	0.7
Residues and waste from the food industries; prepared animal feed.....	23	0.692	189.9	192.9	-7.2	-1.7	0.2	-1.6	1.6
<b>Mineral products.....</b>	V	8.500	204.2	217.8	26.6	-0.1	2.2	4.7	6.7
Ores, slag and ash (Dec. 2012=100).....	26	0.561	95.2	101.9	25.5	-1.5	2.7	3.0	7.0
Mineral fuels, oils and residuals, bituminous substances and mineral waxes.....	27	7.745	195.6	208.9	27.5	0.0	2.2	4.9	6.8
<b>Products of the chemical or allied industries.....</b>	VI	10.801	134.7	135.6	-0.3	-0.4	1.1	0.4	0.7
Inorganic chemicals.....	28	0.774	162.9	156.8	-9.3	-4.5	0.5	1.2	-3.7
Organic chemicals.....	29	2.552	133.6	138.6	4.6	0.2	1.6	1.4	3.7
Pharmaceutical products.....	30	3.164	105.3	105.6	-3.0	0.3	0.1	0.4	0.3
Fertilizers (Dec. 2016=100).....	31	0.243	106.0	102.6	-	-1.5	-0.6	-1.0	-3.2
Tanning or dyeing extracts, dyes, paints varnish, putty, & inks (Dec. 2015=100)....	32	0.521	98.3	99.4	1.7	1.8	-0.4	-1.7	1.1
Essential oils and resinoids; perfumery cosmetic or toilet preparations.....	33	0.809	132.3	132.3	-1.7	-0.5	-0.1	-0.2	0.0
Soap; lubricants; waxes, polishing or scouring products; candles, pastes.....	34	0.571	129.8	129.0	11.4	-0.9	15.3	0.1	-0.6
Miscellaneous chemical products.....	38	1.738	144.1	144.1	-1.6	-0.6	0.0	0.1	0.0
<b>Plastics and articles thereof; rubber and articles thereof.....</b>	VII	5.044	136.7	138.1	1.1	-0.4	-0.3	0.0	1.0
Plastics and articles thereof.....	39	4.115	132.8	134.3	1.8	0.1	0.1	0.2	1.1
Rubber and articles thereof.....	40	0.929	152.9	153.9	-1.6	-2.5	-2.0	-0.6	0.7
<b>Raw hides, skins, leather, furskins, travel goods, etc.....</b>	VIII	0.330	117.1	116.6	-2.8	-0.8	-0.9	-2.3	-0.4
<b>Wood, wood charcoal, cork, straw, baskets and wickerwork (Dec. 2014=100).....</b>	IX	0.638	99.2	101.2	4.9	-2.0	2.5	0.6	2.0
<b>Woodpulp, recovered paper, and paper products.....</b>	X	2.172	129.5	126.1	2.6	3.2	2.0	-0.8	-2.6
Woodpulp and recovered paper.....	47	0.717	145.2	133.6	2.8	10.1	3.6	-2.5	-8.0
Paper and paperboard; articles of paper pulp, paper or paperboard.....	48	1.104	122.4	122.5	3.0	0.2	1.5	0.1	0.1
Printed material (Dec. 2014=100).....	49	0.351	101.5	101.5	1.1	0.0	0.0	0.0	0.0
<b>Textile and textile articles.....</b>	XI	1.734	120.2	119.3	-0.6	-0.7	-0.3	0.3	-0.7
Cotton, including yarns and woven fabrics thereof.....	52	0.455	127.3	125.0	2.4	-2.3	-1.0	0.9	-1.8

See footnotes at end of table.

**Table 6. U.S. export price indexes and percent changes for selected categories of goods: September 2016 to September 2017 — Continued**  
 [2000=100, unless otherwise noted]

Description	Harmoni- zied system	Relative importance Aug. 2017 <sup>1</sup>	Index		Percent change				
			Aug. 2017	Sept. 2017	Annual	Monthly			
					Sept. 2016 to Sept. 2017	May 2017 to June 2017	June 2017 to July 2017	July 2017 to Aug. 2017	Aug. 2017 to Sept. 2017
<b>Stone, plaster, cement, asbestos, ceramics, glass etc.....</b>	XIII	0.831	123.0	123.1	0.0	0.1	0.2	0.0	0.1
Articles of stone, plaster, cement, asbestos, or mica (Dec. 2015=100).....	68	0.277	101.3	101.3	0.1	0.0	0.0	0.2	0.0
Glass and glassware.....	70	0.421	98.4	98.4	-1.3	-0.4	0.0	-0.2	0.0
<b>Pearls, stones, precious metals, imitation jewelry, and coins.....</b>	XIV	4.208	233.7	240.5	0.0	1.3	-1.5	1.7	2.9
<b>Base metals and articles of base metals. ...</b>	XV	4.958	153.4	157.5	10.2	-0.9	0.1	1.3	2.7
Iron and steel.....	72	1.049	159.5	172.2	20.7	-2.4	0.8	3.0	8.0
Copper and articles thereof.....	74	0.504	179.5	189.3	26.5	-0.6	2.7	4.3	5.5
Aluminum and articles thereof.....	76	0.836	111.6	114.6	11.0	-2.3	-1.1	1.4	2.7
Tools, implements, cutlery, spoons and forks, of base metal (Dec. 2015=100). ....	82	0.346	99.5	99.5	-0.5	0.0	0.0	0.0	0.0
Miscellaneous articles of base metal.....	83	0.345	148.0	148.2	0.3	-0.1	0.0	0.0	0.1
<b>Machinery, electrical equipment, TV image and sound recorders, parts, etc.....</b>	XVI	28.659	96.4	96.3	0.9	0.0	0.2	0.1	-0.1
Machinery and mechanical appliances; parts thereof.....	84	16.840	114.0	114.0	1.5	0.1	0.1	0.1	0.0
Electrical machinery and equipment and parts and accessories thereof.....	85	11.819	77.4	77.3	0.1	-0.1	0.4	0.1	-0.1
<b>Vehicles, aircraft, vessels and associated transport equipment.....</b>	XVII	14.941	133.0	133.2	1.3	0.1	0.1	0.2	0.2
Motor vehicles and their parts.....	87	8.653	115.3	115.3	0.8	-0.1	0.1	0.1	0.0
<b>Optical, photo, measuring, medical &amp; musical instruments; &amp; timepieces.....</b>	XVIII	6.032	106.8	106.9	0.8	0.2	0.1	0.4	0.1
<b>Miscellaneous manufactured articles.....</b>	XX	1.477	112.3	112.3	-0.1	0.0	-0.1	0.0	0.0
Furniture; stuffed furnishings; lamps and lighting fittings nesoi;.....	94	0.893	128.3	128.3	-0.2	-0.1	0.0	0.0	0.0
Toys, games and sports equipment; parts and accessories thereof.....	95	0.432	88.7	88.7	-0.6	0.0	0.0	0.0	0.0

<sup>1</sup> Relative importance figures are based on 2015 trade values.

NOTES: Data may be revised in each of the 3 months after original publication.

Dash = Not available

**Table 7. U.S. import price indexes and percent changes by locality of origin: September 2016 to September 2017**

[2000=100, unless otherwise noted]

Description	Relative importance Aug. 2017 <sup>1</sup>	Index		Percent change				
		Aug. 2017	Sept. 2017	Annual	Monthly			
				Sept. 2016 to Sept. 2017	May 2017 to June 2017	June 2017 to July 2017	July 2017 to Aug. 2017	Aug. 2017 to Sept. 2017
<b>Industrialized Countries<sup>2</sup></b> .....	100.000	120.0	120.6	3.1	-0.3	-0.1	0.8	0.5
Nonmanufacturing.....	8.517	136.3	137.4	15.6	-3.7	-0.2	3.5	0.8
Manufacturing.....	91.050	118.1	118.7	2.0	0.2	-0.2	0.5	0.5
<b>Other Countries<sup>3</sup></b> .....	100.000	119.4	120.2	2.0	-0.3	0.1	0.3	0.7
Nonmanufacturing.....	8.808	195.0	203.1	16.9	-3.1	0.7	1.9	4.2
Manufacturing.....	90.986	103.0	103.3	0.7	-0.1	0.1	0.2	0.3
<b>Canada</b> .....	100.000	125.4	126.0	6.3	-1.4	0.1	1.5	0.5
Nonmanufacturing.....	23.636	130.4	130.6	15.7	-4.1	0.0	3.7	0.2
Manufacturing.....	75.574	127.9	128.6	3.7	-0.4	0.1	0.7	0.5
<b>European Union<sup>4</sup></b> .....	100.000	133.6	134.0	2.1	0.4	-0.2	0.8	0.3
Manufacturing.....	99.448	130.2	130.6	2.1	0.4	-0.2	0.7	0.3
<b>France (Dec. 2003=100)</b> .....	100.000	124.9	125.4	2.8	1.4	0.3	1.6	0.4
<b>Germany (Dec. 2003=100)</b> .....	100.000	114.9	115.2	2.0	0.4	0.3	0.4	0.3
<b>United Kingdom (Dec. 2003=100)</b> .....	100.000	117.9	118.3	0.1	0.3	0.0	0.3	0.3
<b>Latin America<sup>5</sup></b> .....	100.000	143.9	145.6	4.4	-0.7	0.2	0.7	1.2
Nonmanufacturing.....	18.302	226.8	240.2	21.4	-3.0	1.3	2.8	5.9
Manufacturing.....	81.356	120.4	120.5	1.1	-0.2	0.0	0.2	0.1
<b>Mexico (Dec. 2003=100)</b> .....	100.000	127.3	129.1	2.5	-0.2	-0.1	0.6	1.4
Nonmanufacturing (Dec. 2008=100).....	9.108	127.5	144.4	26.8	0.1	-0.1	2.9	13.3
Manufacturing (Dec. 2008=100).....	90.584	88.1	88.4	0.3	-0.1	-0.1	0.2	0.3
<b>Pacific Rim (Dec. 2003=100)<sup>6</sup></b> .....	100.000	98.3	98.3	-0.3	0.0	0.1	-0.2	0.0
<b>China (Dec. 2003=100)</b> .....	100.000	100.0	100.0	-0.7	-0.1	0.1	-0.1	0.0
<b>Japan</b> .....	100.000	95.6	95.8	-0.3	-0.1	-0.2	-0.5	0.2
<b>Asian NICs<sup>7</sup></b> .....	100.000	86.6	86.5	2.5	0.3	0.6	0.0	-0.1
<b>ASEAN (Dec. 2003=100)<sup>8</sup></b> .....	100.000	97.9	98.0	1.0	0.0	-0.2	0.1	0.1
<b>Asia Near East (Dec. 2003=100)<sup>9</sup></b> .....	100.000	146.4	148.5	3.6	-2.7	-0.7	-1.0	1.4

<sup>1</sup> Relative importance figures are based on 2015 trade values.

<sup>2</sup> Western Europe, Canada, Japan, Australia, New Zealand, and South Africa.

<sup>3</sup> Eastern Europe, Latin America, OPEC countries, and other countries in Asia, Africa, and the Western Hemisphere.

<sup>4</sup> European Union countries.

<sup>5</sup> Mexico, Central America, South America, and the Caribbean.

<sup>6</sup> China, Japan, Australia, Brunei, Indonesia, Macao, Malaysia, New Zealand, Papua New Guinea, Philippines, and the Asian Newly Industrialized Countries.

<sup>7</sup> Asian Newly Industrialized Countries - Hong Kong, Singapore, South Korea, and Taiwan.

<sup>8</sup> Association of Southeast Asian Nations - Brunei, Cambodia, Indonesia, Laos, Malaysia, Myanmar, Philippines, Singapore, Thailand, and Vietnam.

<sup>9</sup> Bahrain, Iran, Iraq, Israel, Jordan, Kuwait, Lebanon, Oman, Qatar, Saudi Arabia, Syria, United Arab Emirates, and Yemen.

NOTES: Data may be revised in each of the 3 months after original publication.

Regions are not mutually exclusive.

Dash = Not available

**Table 8. U.S. international price indexes and percent changes for selected transportation services: September 2016 to September 2017**

[2000=100, unless otherwise noted]

Description	Relative importance Aug. 2017 <sup>1</sup>	Index		Percent change				
		Aug. 2017	Sept. 2017	Annual Sept. 2016 to Sept. 2017	Monthly			
					May 2017 to June 2017	June 2017 to July 2017	July 2017 to Aug. 2017	Aug. 2017 to Sept. 2017
<b>Air Freight</b>								
<b>Import Air Freight</b> .....	100.000	182.0	182.8	19.6	-0.8	10.3	0.2	0.4
Europe (Dec. 2003=100).....	23.405	144.7	147.7	6.8	-1.3	3.1	1.0	2.1
Asia.....	65.092	175.6	175.6	29.5	-0.7	15.8	-0.2	0.0
<b>Export Air Freight</b> .....	100.000	157.5	157.8	3.1	1.6	-2.5	-0.3	0.2
Europe (Dec. 2006=100).....	33.078	146.9	147.9	1.6	0.0	0.0	0.0	0.7
<b>Inbound Air Freight</b> .....	100.000	165.5	166.3	14.1	-0.3	6.3	0.4	0.5
Europe (Dec. 2003=100).....	25.520	134.4	136.5	0.9	-1.3	2.3	0.6	1.6
Asia.....	62.039	159.2	159.4	24.0	0.2	10.2	0.4	0.1
<b>Outbound Air Freight</b> .....	100.000	141.0	138.7	1.3	1.1	1.5	-1.5	-1.6
Europe (Dec. 2003=100).....	30.587	146.0	143.8	0.2	0.0	0.4	0.0	-1.5
Asia.....	47.081	137.0	133.7	4.3	2.5	2.9	-3.1	-2.4
<b>Air Passenger Fares</b>								
<b>Import Air Passenger Fares</b> .....	100.000	157.9	171.3	-3.7	3.7	-2.8	-10.6	8.5
Europe.....	37.933	162.4	193.0	-6.5	4.2	-6.1	-12.4	18.8
Asia.....	23.810	129.4	135.1	7.8	10.9	-6.5	-8.4	4.4
Latin America/Caribbean.....	11.227	161.9	152.7	3.0	4.3	2.0	-2.5	-5.7
<b>Export Air Passenger Fares</b> .....	100.000	162.2	148.1	1.2	4.8	5.0	-1.3	-8.7
Europe.....	26.488	181.6	206.1	6.3	7.7	1.8	-14.1	13.5
Asia.....	28.214	149.6	118.6	-5.1	3.9	0.2	16.4	-20.7
Latin America/Caribbean.....	23.845	168.7	162.1	5.3	1.2	6.6	-1.5	-3.9

<sup>1</sup> Relative importance figures are based on 2015 trade values.

NOTES: Data may be revised in each of the 3 months after original publication.

Dash = Not available

## TECHNICAL NOTE

**Announcement** - The Bureau of Labor Statistics is utilizing new index estimation and review systems for the import and export price indexes effective with the release of the June 2017 price data on July 18, 2017. The new estimation and index review systems, the first major improvement to the existing systems in over 20 years, are redesigned, state-of-the-art systems with improved flexibility and review capabilities. The changes to the systems will not have a significant effect on the estimates of price change for the U.S. import and export price indexes.

**Import and Export Merchandise and Services Price Indexes** - All indexes use a modified Laspeyres formula and are not seasonally adjusted. Price indexes are reweighted annually, with a 2-year lag in the weights. Published series use a base year of 2000=100 where possible. More detailed index series and additional information may be obtained at [www.bls.gov/mxp](http://www.bls.gov/mxp) or by calling (202) 691-7101.

**Merchandise Goods Classification Systems** - The merchandise price indexes are published using three classification systems. Items are classified by end use according to the Bureau of Economic Analysis Classification System, by industry according to the North American Industry Classification System (NAICS), and by product category according to the Harmonized System (HS). While classification by end use and product category are self-explanatory, some notes are in order for classifying items by industry. In the NAICS imports and exports tables, items are classified by output industry, not input industry. As an example, NAICS import index 326 (plastics and rubber products manufacturing) include outputs such as manufactured plastic rather than inputs such as petroleum. The NAICS classification structure also matches the classification system used by the Producer Price Index (PPI) to produce the NAICS primary products indexes.

**Import Price Indexes** - Products have been classified by the Harmonized Tariff Schedule of the United States Annotated (TSUSA). Import prices are based on U.S. dollar prices paid by the U.S. importer. The prices are generally either "free on board" (f.o.b.) foreign port or "cost, insurance, and freight" (c.i.f.) U.S. port transaction prices, depending on the practices of the individual industry. The index for crude petroleum is calculated from data collected by the U.S. Department of Energy.

**Export Price Indexes** - Products have been classified by the Harmonized Schedule B classification system of the U.S. Bureau of the Census. The prices used are generally either "free alongside ship" (f.a.s.) factory or "free on board" (f.o.b.) transaction prices, depending on the practices of the individual industry. Prices used in the grain index, excluding rice, are obtained from the U.S. Department of Agriculture.

**Services Price Indexes** - Starting in September 2008, the import air passenger fares indexes represent changes in the average revenue per passenger received by foreign carriers from U.S. residents and are calculated from data obtained from an airline consulting service. These data include tickets sold by travel agencies and travel websites. Tickets sold directly by the airlines are excluded, as are frequent flyer tickets generally. Starting in January 2008, the export air passenger fares indexes represent changes in the average revenue per passenger received by U.S. carriers from foreign residents and are calculated from data collected directly from airlines. These data include frequent flyer tickets and those sold by consolidators. Taxes and fees are included in the import air passenger fares indexes and excluded from the export air passenger fares indexes. The air freight indexes are calculated from data collected directly from airlines. These data exclude mail and passenger baggage. The scope of the service being priced is the movement of freight from airport to airport only, and does not include any ground transportation or port service. The air freight indexes are presented using two definitions: balance of payments (which represent transactions between U.S. and foreign residents) and international (which represent transactions inbound to and outbound from the U.S.). Fact sheets specifying detailed information for each services industry are available at [www.bls.gov/mxp](http://www.bls.gov/mxp) under "MXP Publications."

**Import Indexes by Locality of Origin** - Prices used in these indexes are a subset of the data collected for the import price indexes. Beginning with January 2002, the indexes are defined by locality of origin using a nomenclature based upon the North American Industry Classification System (NAICS). Nonmanufactured goods are defined as NAICS 11 and 21, and manufactured goods are defined as NAICS 31-33.

**Revision Policy** - To reflect the availability of late reports and corrections by respondents, monthly data may be revised in each of the 3 months after original publication. After 3 months, no further data revisions take place. For example, data first published in the January release will be subject to revision in the releases for February, March, and April.

**Uses of the Data** - The primary use of the indexes is to deflate trade statistics, notably the foreign trade sector of the National Income and Product Accounts (NIPA) constructed by the Department of Commerce. Other published indexes are useful for general market analysis. For trade in international services, balance of payments indexes are used for deflating NIPA, while international indexes are more appropriate for market analysis. Merchandise and services indexes also can be used to study U.S. competitiveness and to compute price elasticities, and the merchandise import indexes by country or region of origin are useful in terms of trade analysis.

**Email Subscription** - The U.S. import and export price indexes news release is available through an email subscription service at [www.bls.gov/bls/list.htm](http://www.bls.gov/bls/list.htm).

**Additional Information** - More detailed data are available on the Import/Export Price Indexes home page at [www.bls.gov/mxp](http://www.bls.gov/mxp). For import and export price indexes data requests, send an email to [mxpinfo@bls.gov](mailto:mxpinfo@bls.gov).

Information from this release will be made available to sensory impaired individuals upon request. Voice phone: (202)-691-5200; Federal Relay Service: 1-(800)-877-8339.