

Transmission of material in this release is embargoed until
8:30 a.m. (EST) Wednesday, December 14, 2011

USDL-11-1746

Technical information: (202) 691-7101 • MXPinfo@bls.gov • www.bls.gov/mxp
Media contact: (202) 691-5902 • PressOffice@bls.gov

U.S. IMPORT AND EXPORT PRICE INDEXES – NOVEMBER 2011

Following declines in each of the previous three months, U.S. import prices rose 0.7 percent in November, the U.S. Bureau of Labor Statistics reported today; an upturn in fuel prices more than offset decreasing prices for nonfuel imports. Export prices ticked up 0.1 percent in November, after a 2.1 percent drop in October.

Chart 1. One-month percent change in the Import Price Index: November 2010 – November 2011

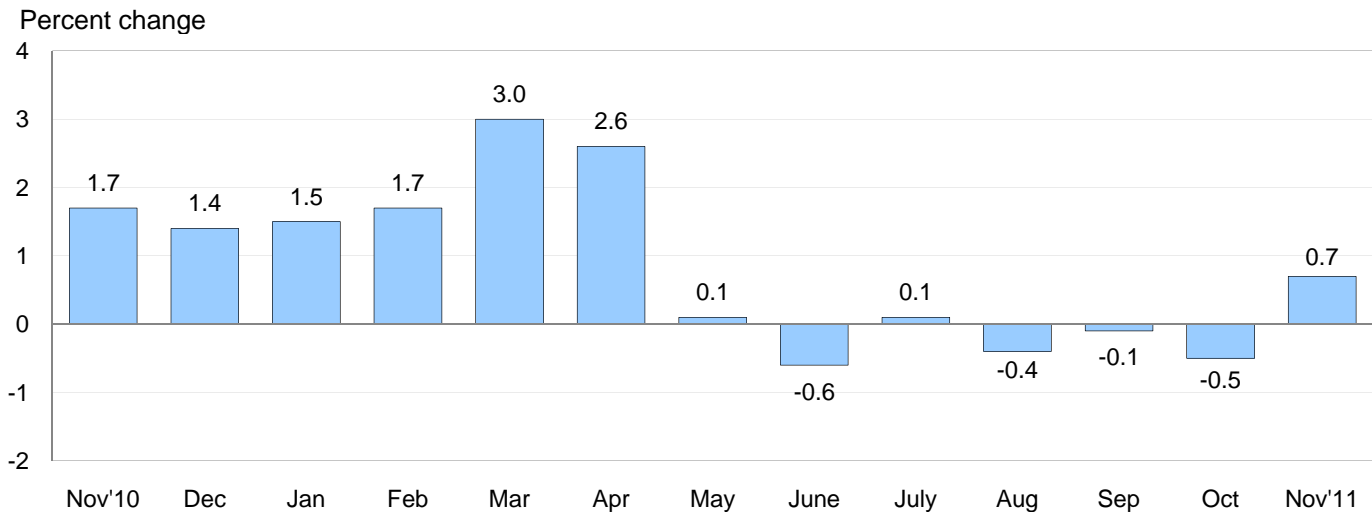
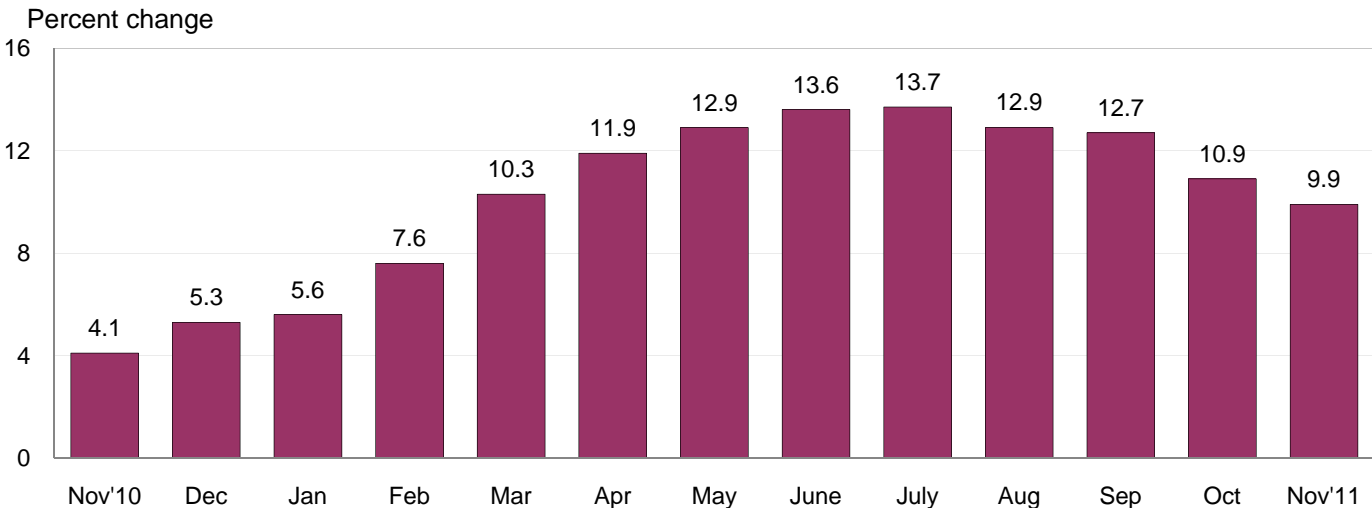


Chart 2. 12-month percent change in the Import Price Index: November 2010 – November 2011



All Imports: Import prices rose 0.7 percent in November following declines of 0.5 percent, 0.1 percent, and 0.4 percent the three previous months. The November advance is the largest monthly increase since a 2.6 percent rise in April. Overall import prices increased 9.9 percent for the year ended in November, due primarily to higher prices for the first half of the period.

Fuel Imports: A 3.6 percent rise in import fuel prices drove the November increase in overall import prices. The November increase followed declines in five of the six previous months. Fuel prices rose 31.6 percent over the past 12 months despite declining 7.2 percent between April and October. Both petroleum and natural gas prices, up 3.6 percent and 5.3 percent, respectively, in November contributed to the increase in overall fuel prices. Petroleum prices increased 33.4 percent over the past year, while natural gas prices advanced 5.8 percent for the same period.

All Imports Excluding Fuel: The price index for nonfuel imports declined 0.2 percent for the second consecutive month, the first monthly decreases since a 0.3 percent drop in July 2010. The November decrease was led by lower prices for nonfuel industrial supplies and materials imports as well as for imported foods, feeds, and beverages. In contrast, prices for each of the major finished goods categories edged up in November. Despite the recent declines, nonfuel prices advanced 3.8 percent for the year ended in November, led by an 8.1 percent increase in nonfuel industrial supplies and materials prices.

Table A. Percent changes

Month	IMPORTS			EXPORTS		
	All imports	Fuel imports	Nonfuel imports	All exports	Agricultural exports	Non-agricultural exports
2010						
November.....	1.7	4.8	0.8	1.5	7.6	0.8
December.....	1.4	5.6	0.3	0.7	2.0	0.6
2011						
January.....	1.5	4.1	0.7	1.3	3.1	1.0
February.....	1.7	5.6	0.5	1.3	4.6	1.0
March.....	3.0	9.7	0.8	1.5	2.2	1.4
April.....	2.6	7.6	0.8	0.8	-0.5	0.9
May.....	0.1	-0.6	0.3	0.4	-1.1	0.5
June.....	-0.6	-2.3	0.0	0.1	0.8	0.2
July.....	0.1	0.1	0.2	-0.4	-4.0	0.1
August.....	-0.4	-2.1	0.2	0.4 ^r	1.6	0.3 ^r
September.....	-0.1 ^r	-1.0 ^r	0.2	0.5 ^r	1.9	0.3 ^r
October.....	-0.5 ^r	-1.5 ^r	-0.2	-2.1	-6.5	-1.5
November.....	0.7	3.6	-0.2	0.1	1.5	-0.1
Nov. 2009 to 2010.....	4.1	8.0	3.0	6.5	20.3	5.1
Nov. 2010 to 2011.....	9.9	31.6	3.8	4.7	5.3	4.8

r Revised

Chart 3. One-month percent change in the Export Price Index: November 2010 – November 2011

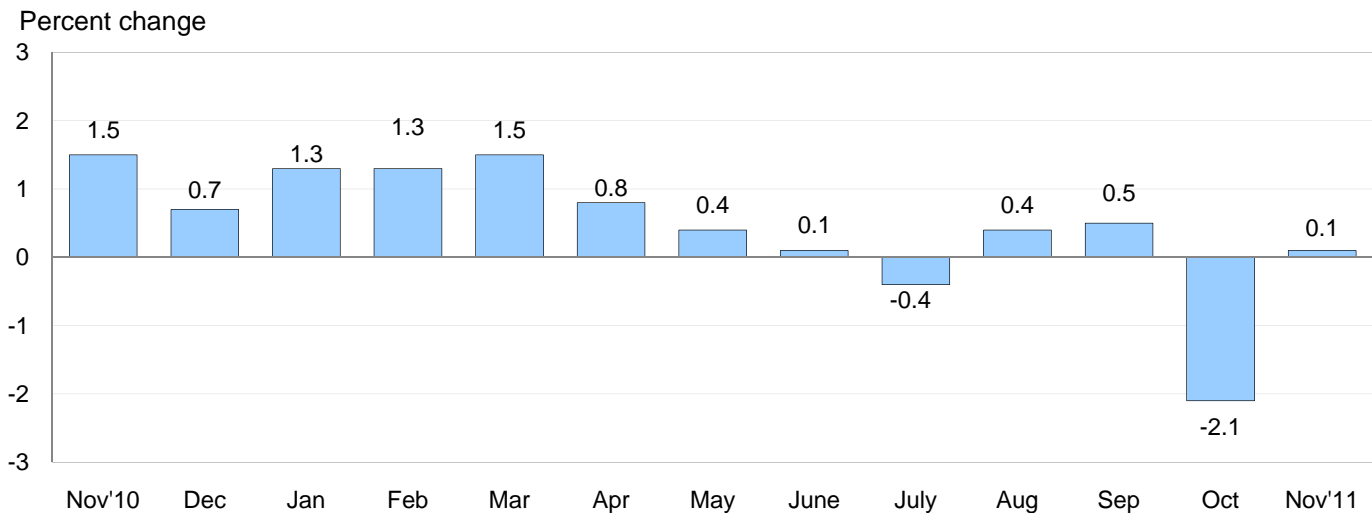
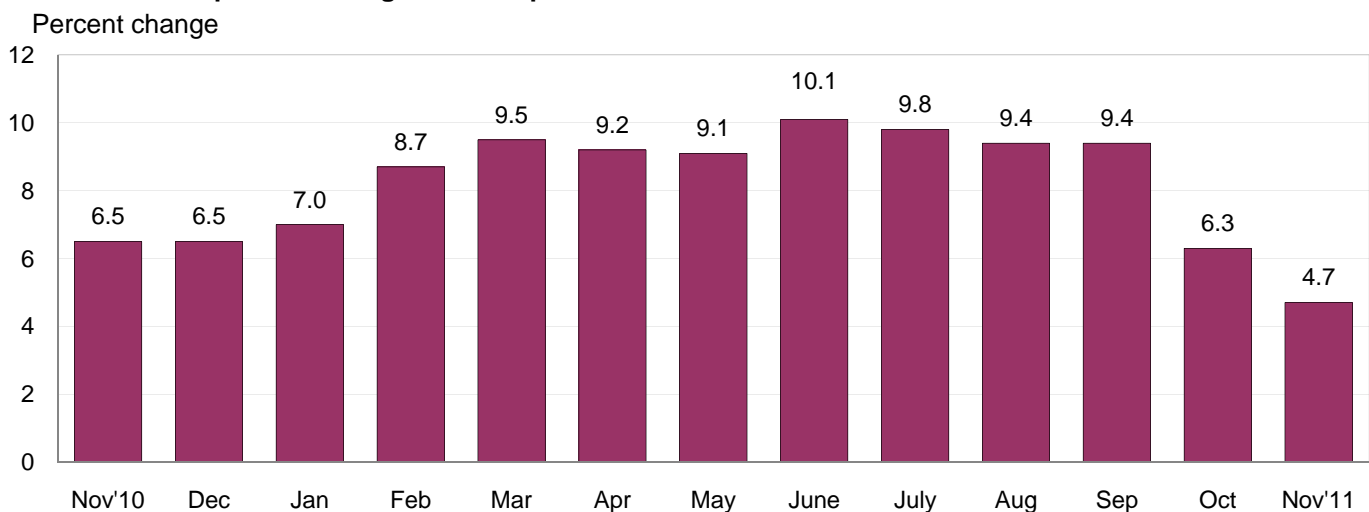


Chart 4. 12-month percent change in the Export Price Index: November 2010 – November 2011



All Exports: Export prices advanced 0.1 percent in November after a 2.1 percent drop the previous month. In November, a rise in agricultural prices more than offset falling nonagricultural prices. Overall export prices rose 4.7 percent for the November 2010-11 period, the smallest year-over-year advance since a 4.1 percent increase between August 2009 and August 2010.

Agricultural Exports: Agricultural prices increased 1.5 percent in November after declining 6.5 percent the previous month. An upturn in corn and soybeans prices which rose 9.0 percent and 4.7 percent, respectively, primarily drove the November advance. The price index for agricultural exports increased 5.3 percent for the year ended in November.

All Exports Excluding Agriculture: Prices for nonagricultural exports edged down 0.1 percent in November following a 1.5 percent decrease in October. Falling prices for both nonagricultural industrial supplies and materials and consumer goods contributed to the November decline. Nonagricultural prices increased 4.8 percent over the past year, led by a 10.2 percent advance in the price index for nonagricultural industrial supplies and materials.

SELECTED NOVEMBER HIGHLIGHTS

Import Prices

Nonfuel Industrial Supplies and Materials: The price index for nonfuel industrial supplies and materials fell 1.8 percent in November after a 1.4 percent decline the previous month. Both decreases were driven by falling unfinished metals prices which fell 5.0 percent in November and 4.1 percent in October. Despite those recent drops, prices for unfinished metals rose 5.7 percent for the November 2010-11 period.

Finished Goods: Each of the major finished goods categories recorded increases in November. The price indexes for consumer goods and capital goods each ticked up 0.1 percent for the month. Automotive vehicle prices rose 0.2 percent in November driven by a 0.3 percent advance in the price index for parts, engines, bodies, and chassis.

Foods, Feeds, and Beverages: Foods, feeds, and beverages prices edged down 0.1 percent in November, following a 0.7 percent decrease the previous month. The November drop was led in part by falling prices for fish and shellfish.

Imports by Locality of Origin: The price index for imports from China increased 0.3 percent in November after rising 0.4 percent the previous month. Import prices from China advanced 3.9 percent for the year ended in November. Import prices from Canada also rose in November, up 0.3 percent following declines in each of the previous three months. The price indexes for imports from the European Union, Mexico, and Japan all ticked up 0.1 percent in November.

Transportation Services: Import air passenger fares decreased 0.7 percent in November following a 1.9 percent increase the previous month. The November decline was driven by a 3.5 percent drop in European fares which more than offset a 2.5 percent advance in Asian fares. Import air freight prices declined 1.7 percent in November after a 2.3 percent drop the previous month.

Export Prices

Nonagricultural Industrial Supplies and Materials: Nonagricultural industrial supplies and materials prices edged down 0.2 percent in November following a 3.5 percent decline the previous month. Falling prices for gold, steelmaking materials, paper, and plastics all contributed to the November decline. The November decrease for nonagricultural industrial supplies and materials prices was partially mitigated by a 3.5 percent rise in fuel prices.

Finished Goods: Export finished goods prices recorded little movement overall in November. Consumer goods prices fell 0.2 percent, led by a 1.3 percent drop in home entertainment products. The price indexes for capital goods and automotive vehicles were each unchanged in November.

Transportation Services: Export air passenger fares fell for the third consecutive month, declining 3.3 percent in November following decreases of 2.5 percent in October and 13.4 percent in September. The November drop was led by a 7.9 percent seasonal decline in European fares. Export air freight prices also decreased in November, falling 0.9 percent.

Import and Export Price Index data for December 2011 are scheduled for release on Friday, January 13, 2012 at 8:30 a.m. (EST).

Table 1. U.S. import price indexes and percent changes for selected categories of goods: November 2010 to November 2011

[2000=100, unless otherwise noted]

Description	End Use	Relative importance Oct. 2011 ¹	Index		Percent change				
			Oct. 2011	Nov. 2011	Annual Nov. 2010 to Nov. 2011	Monthly			
						July 2011 to Aug. 2011	Aug. 2011 to Sept. 2011	Sept. 2011 to Oct. 2011	Oct. 2011 to Nov. 2011
All commodities		100.000	141.0	142.0	9.9	-0.4	-0.1	-0.5	0.7
All imports excluding food and fuels (Dec. 2010=100)		68.066	103.5	103.2	–	0.3	0.2	-0.1	-0.3
All imports excluding petroleum		75.086	116.6	116.4	3.7	0.3	0.2	-0.3	-0.2
All imports excluding fuels (Dec. 2001=100) ..		73.769	120.7	120.4	3.8	0.2	0.2	-0.2	-0.2
Foods, feeds, & beverages	0	5.703	173.5	173.4	8.0	-0.8	0.2	-0.7	-0.1
Agricultural foods, feeds & beverages, excluding distilled beverages.....	00	4.428	194.6	195.0	8.2	-0.8	0.2	-1.0	0.2
Nonagricultural foods (fish, distilled beverages).....	01	1.275	125.9	124.5	7.3	-0.7	0.0	0.5	-1.1
Industrial supplies & materials	1	39.501	258.7	263.3	22.8	-1.1	-0.5	-1.4	1.8
Industrial supplies & materials excluding petroleum.....		14.587	171.0	168.9	7.6	1.0	0.2	-2.1	-1.2
Industrial supplies & materials excluding fuels (Dec. 2001=100).....		13.270	193.8	190.4	8.1	0.9	0.6	-1.4	-1.8
Industrial supplies & materials, durable.....		8.044	184.7	180.0	5.9	1.5	0.7	-2.5	-2.5
Industrial supplies & materials nondurable excluding petroleum.....		5.226	155.0	155.5	9.7	0.5	-0.4	-1.6	0.3
Fuels & lubricants.....	10	26.231	343.2	355.4	31.6	-2.1	-1.0	-1.5	3.6
Petroleum & petroleum products.....	100	24.914	382.1	395.8	33.4	-2.3	-0.9	-1.1	3.6
Crude.....	10000	18.446	388.8	404.8	33.9	-3.9	-0.1	-0.3	4.1
Fuels, n.e.s.-coals & gas.....	101	0.990	117.0	122.1	4.1	2.6	-3.8	-8.7	4.4
Gas-natural.....	10110	0.867	101.8	107.2	5.8	3.0	-4.2	-9.8	5.3
Paper & paper base stocks.....	11	0.631	117.3	116.2	-1.1	-1.7	-1.0	0.1	-0.9
Materials associated with nondurable supplies & materials.....	12	4.679	176.3	175.7	14.0	0.3	0.6	0.2	-0.3
Selected building materials.....	13	1.050	130.3	129.8	2.5	0.2	0.3	-0.7	-0.4
Unfinished metals related to durable goods.....	14	3.896	292.6	277.9	5.7	2.2	0.7	-4.1	-5.0
Finished metals related to durable goods. . .	15	1.582	162.3	162.5	6.9	1.4	1.0	-2.1	0.1
Nonmetals related to durable goods.....	16	1.432	116.3	115.7	6.6	0.4	0.7	0.0	-0.5
Capital goods	2	20.884	92.6	92.7	0.9	0.1	0.0	-0.3	0.1
Electric generating equipment.....	20	2.699	119.0	119.0	4.8	0.3	0.0	0.3	0.0
Nonelectrical machinery.....	21	16.358	86.0	86.1	-0.1	0.1	0.0	-0.5	0.1
Transportation equipment excluding motor vehicles (Dec. 2001=100).....	22	1.827	126.4	126.4	3.8	0.1	0.1	0.0	0.0
Automotive vehicles, parts & engines	3	9.284	113.2	113.4	3.5	0.2	0.0	0.0	0.2
Consumer goods, excluding automotives ..	4	24.628	107.4	107.5	3.3	0.3	0.3	0.7	0.1
Nondurables, manufactured.....	40	12.183	114.5	114.6	4.2	0.4	0.2	1.5	0.1
Durables, manufactured.....	41	11.399	100.0	100.1	1.6	0.2	0.4	-0.2	0.1
Nonmanufactured consumer goods.....	42	1.047	115.1	114.6	10.6	-0.3	0.7	0.3	-0.4

¹ Relative importance figures are based on 2009 trade values.

NOTES: Data may be revised in each of the three months after original publication.

Dash = Not available

Table 2. U.S. export price indexes and percent changes for selected categories of goods: November 2010 to November 2011

[2000=100, unless otherwise noted]

Description	End Use	Relative importance Oct. 2011 ¹	Index		Percent change				
			Oct. 2011	Nov. 2011	Annual Nov. 2010 to Nov. 2011	Monthly			
						July 2011 to Aug. 2011	Aug. 2011 to Sept. 2011	Sept. 2011 to Oct. 2011	Oct. 2011 to Nov. 2011
All commodities		100.000	132.5	132.6	4.7	0.4	0.5	-2.1	0.1
Agricultural commodities		11.206	201.9	205.0	5.3	1.6	1.9	-6.5	1.5
All exports excluding food and fuels (Dec. 2010=100)		81.184	102.9	102.3	-	0.3	0.2	-0.9	-0.6
Nonagricultural commodities		88.794	127.6	127.5	4.8	0.3	0.3	-1.5	-0.1
Foods, feeds, & beverages	0	10.160	199.0	202.8	7.1	2.8	2.4	-7.0	1.9
Agricultural foods, feeds & beverages, excluding distilled beverages.....	00	9.408	201.2	205.5	6.3	3.0	2.5	-7.5	2.1
Nonagricultural foods (fish, distilled beverages).....	01	0.752	184.0	181.9	18.7	0.6	-0.2	-0.3	-1.1
Industrial supplies & materials	1	34.667	186.2	185.8	9.6	0.2	0.6	-3.4	-0.2
Industrial supplies & materials, durable.....		12.558	190.0	187.0	8.5	1.5	2.3	-3.4	-1.6
Industrial supplies & materials, nondurable.....		22.107	185.0	186.0	10.3	-0.5	-0.3	-3.5	0.5
Agricultural industrial supplies & materials...	10	1.798	209.4	206.4	0.0	-4.9	-1.5	-1.4	-1.4
Nonagricultural industrial supplies & materials		32.868	185.5	185.2	10.2	0.5	0.7	-3.5	-0.2
Fuels & lubricants.....	11	8.656	269.1	278.6	22.5	-0.6	0.2	-5.5	3.5
Nonagricultural supplies & materials excluding fuels & building materials.....	12	23.344	175.9	173.2	6.6	1.0	0.9	-2.9	-1.5
Selected building materials.....	13	0.868	116.1	116.3	-0.8	-0.3	0.4	0.3	0.2
Capital goods	2	34.776	104.6	104.6	0.9	0.1	-0.1	0.0	0.0
Electrical generating equipment.....	20	3.405	113.7	113.1	3.0	0.0	0.0	-0.4	-0.5
Nonelectrical machinery.....	21	24.266	94.3	94.2	-0.1	0.1	-0.1	0.1	-0.1
Transportation equipment excluding motor vehicles (Dec. 2001=100).....	22	7.105	145.1	145.2	3.2	0.1	-0.1	0.1	0.1
Automotive vehicles, parts & engines	3	6.818	111.6	111.6	2.3	0.3	0.3	0.2	0.0
Consumer goods, excluding automotives ..	4	13.580	116.8	116.6	3.3	0.3	0.2	-0.5	-0.2
Nondurables, manufactured.....	40	6.738	113.7	113.4	-0.7	0.2	-0.2	-0.9	-0.3
Durables, manufactured.....	41	5.438	113.3	113.3	2.0	0.2	0.5	-0.3	0.0

¹ Relative importance figures are based on 2009 trade values.

NOTES: Data may be revised in each of the three months after original publication.

Dash = Not available

Table 3. U.S. import price indexes and percent changes for selected categories of goods: November 2010 to November 2011

[December 2005=100, unless otherwise noted]

Description	NAICS	Relative importance Oct. 2011 ¹	Index		Percent change				
			Oct. 2011	Nov. 2011	Annual Nov. 2010 to Nov. 2011	Monthly			
						July 2011 to Aug. 2011	Aug. 2011 to Sept. 2011	Sept. 2011 to Oct. 2011	Oct. 2011 to Nov. 2011
Nonmanufactured articles.....		22.599	168.3	174.0	29.1	-3.2	-0.1	-0.8	3.4
Agriculture, forestry, fishing and hunting...	11	2.119	178.7	175.3	8.8	-2.5	1.5	-0.3	-1.9
Crop production.....	111	1.529	183.8	180.9	8.1	-3.3	2.0	-0.9	-1.6
Mining.....	21	20.480	167.0	173.5	31.4	-3.4	-0.2	-0.8	3.9
Mining (except oil and gas) (Dec. 2006=100).....	212	0.383	157.6	156.6	11.6	1.5	-0.3	0.2	-0.6
Manufactured articles.....		76.914	117.9	117.9	5.4	0.5	-0.1	-0.4	0.0
Manufactured goods, part 1.....	31	11.003	123.4	123.9	9.4	0.5	0.0	0.0	0.4
Food manufacturing.....	311	3.286	155.4	156.9	12.2	0.4	-0.4	-0.8	1.0
Beverage and tobacco product manufacturing.....	312	0.894	111.9	111.9	1.5	-0.4	0.1	0.2	0.0
Textile product mills.....	314	0.877	118.9	118.8	13.1	0.3	0.7	0.2	-0.1
Apparel manufacturing.....	315	4.088	111.6	111.8	9.0	1.0	0.1	0.4	0.2
Leather and allied product manufacturing. . .	316	1.480	115.3	115.7	6.6	0.2	0.0	0.7	0.3
Manufactured goods, part 2.....	32	19.026	139.9	140.4	11.8	0.9	-0.9	-0.2	0.4
Wood product manufacturing.....	321	0.641	107.8	107.1	2.7	0.3	0.7	-1.4	-0.6
Paper manufacturing.....	322	1.165	112.7	112.5	1.6	-0.9	-0.5	0.4	-0.2
Petroleum and coal products manufacturing.....	324	5.316	175.4	179.8	33.6	2.7	-3.7	-3.5	2.5
Chemical manufacturing.....	325	9.281	135.8	135.1	5.2	0.2	0.3	1.6	-0.5
Plastics and rubber products manufacturing.....	326	1.758	125.9	126.1	8.6	0.1	0.2	0.6	0.2
Nonmetallic mineral product manufacturing.....	327	0.772	127.1	127.1	3.1	0.2	0.1	-0.7	0.0
Manufactured goods, part 3.....	33	46.884	110.0	109.6	2.0	0.3	0.3	-0.6	-0.4
Primary metal manufacturing.....	331	4.620	189.3	181.5	5.7	2.0	0.9	-3.7	-4.1
Fabricated metal product manufacturing. . .	332	2.513	128.3	128.8	6.9	0.8	1.2	-0.7	0.4
Machinery manufacturing.....	333	5.367	119.2	119.3	4.0	0.5	0.1	-0.2	0.1
Computer and electronic product manufacturing.....	334	14.297	82.6	82.5	-3.5	-0.1	-0.1	-0.6	-0.1
Electrical equipment, appliance, and component manufacturing.....	335	3.493	117.2	117.3	3.5	0.2	0.1	0.7	0.1
Transportation equipment manufacturing. . .	336	10.358	109.7	109.8	3.1	0.2	0.0	-0.1	0.1
Furniture and related product manufacturing.....	337	1.218	113.0	113.2	6.1	0.3	0.5	0.6	0.2
Miscellaneous manufacturing.....	339	5.018	122.3	122.7	7.6	0.2	0.5	-0.3	0.3

¹ Relative importance figures are based on 2009 trade values.

NOTES: Data may be revised in each of the three months after original publication.

Dash = Not available

Table 4. U.S. export price indexes and percent changes for selected categories of goods: November 2010 to November 2011

[December 2005=100, unless otherwise noted]

Description	NAICS	Relative importance Oct. 2011 ¹	Index		Percent change				
			Oct. 2011	Nov. 2011	Annual Nov. 2010 to Nov. 2011	Monthly			
						July 2011 to Aug. 2011	Aug. 2011 to Sept. 2011	Sept. 2011 to Oct. 2011	Oct. 2011 to Nov. 2011
Nonmanufactured articles.....		8.711	166.2	169.9	4.0	1.9	1.3	-8.9	2.2
Agriculture, forestry, fishing and hunting...	11	6.296	186.5	192.1	4.2	2.6	2.0	-10.6	3.0
Crop production.....	111	5.825	191.2	198.7	3.3	2.5	2.2	-11.6	3.9
Mining.....	21	2.415	120.4	120.4	3.5	0.2	-0.6	-4.1	0.0
Mining (except oil and gas).....	212	1.653	144.5	143.7	4.9	1.4	-0.9	-2.3	-0.6
Manufactured articles.....		87.699	120.2	120.1	4.9	0.2	0.2	-0.9	-0.1
Manufactured goods, part 1.....	31	7.441	145.1	144.5	8.3	0.5	1.0	-0.7	-0.4
Food manufacturing.....	311	5.232	165.4	164.7	9.9	0.7	1.5	-0.1	-0.4
Beverage and tobacco product manufacturing.....	312	0.541	114.1	116.2	0.9	-0.8	1.0	-1.4	1.8
Apparel manufacturing.....	315	0.412	114.2	114.2	8.7	0.0	0.0	0.0	0.0
Manufactured goods, part 2.....	32	26.532	132.8	133.6	8.3	0.1	0.0	-2.4	0.6
Wood product manufacturing.....	321	0.384	114.2	114.2	-4.1	-0.4	0.9	-0.5	0.0
Paper manufacturing.....	322	1.954	123.7	121.6	-1.5	0.6	-0.8	-0.8	-1.7
Petroleum and coal products manufacturing.....	324	5.801	162.9	169.9	27.1	-1.3	0.6	-6.6	4.3
Chemical manufacturing.....	325	15.652	131.0	130.5	4.6	0.5	-0.2	-1.5	-0.4
Plastics and rubber products manufacturing.....	326	2.045	116.3	116.2	8.1	0.7	0.2	1.0	-0.1
Nonmetallic mineral product manufacturing.....	327	0.696	111.3	111.2	-1.6	-0.1	0.7	0.3	-0.1
Manufactured goods, part 3.....	33	53.726	112.8	112.6	3.0	0.3	0.4	-0.4	-0.2
Primary metal manufacturing.....	331	5.306	182.8	178.0	13.2	1.6	3.1	-2.7	-2.6
Fabricated metal product manufacturing.	332	2.499	128.2	128.8	5.7	0.1	-0.2	0.5	0.5
Machinery manufacturing.....	333	10.487	117.6	117.8	2.2	0.1	0.0	0.0	0.2
Computer and electronic product manufacturing.....	334	13.775	89.6	89.5	-1.9	0.0	-0.1	0.1	-0.1
Electrical equipment, appliance, and component manufacturing.....	335	3.065	111.9	111.6	1.7	0.2	0.1	-1.3	-0.3
Transportation equipment manufacturing....	336	13.062	114.7	114.8	2.8	0.2	0.1	0.1	0.1
Miscellaneous manufacturing.....	339	5.236	124.4	124.3	10.2	0.5	0.3	-0.2	-0.1

¹ Relative importance figures are based on 2009 trade values.

NOTES: Data may be revised in each of the three months after original publication.

Dash = Not available

Table 5. U.S. import price indexes and percent changes for selected categories of goods: November 2010 to November 2011

[2000=100, unless otherwise noted]

Description	Harmonized system	Relative importance Oct. 2011 ¹	Index		Percent change				
			Oct. 2011	Nov. 2011	Annual	Monthly			
					Nov. 2010 to Nov. 2011	July 2011 to Aug. 2011	Aug. 2011 to Sept. 2011	Sept. 2011 to Oct. 2011	Oct. 2011 to Nov. 2011
Live animals; animal products.....	I	1.331	167.6	167.2	9.4	-0.9	-0.7	0.7	-0.2
Meat and edible meat offal.....	02	0.309	208.3	217.4	16.8	2.3	-2.4	-0.6	4.4
Fish and crustaceans, molluscs and other aquatic invertebrates.....	03	0.708	126.0	123.1	4.7	-1.8	-0.6	0.7	-2.3
Vegetable products.....	II	1.830	210.2	207.5	11.3	-1.6	1.5	-1.5	-1.3
Edible vegetables, roots, and tubers.....	07	0.323	318.2	316.9	3.0	5.6	-0.2	1.4	-0.4
Edible fruit and nuts; peel of citrus fruit or melons.....	08	0.491	114.4	113.6	-0.1	0.4	-4.5	-7.4	-0.7
Coffee, tea, mate and spices.....	09	0.495	290.1	287.2	31.7	-9.8	9.8	-1.4	-1.0
Animal or vegetable fats and oils (Dec. 2009=100).....	III	0.278	126.6	131.5	4.5	-0.7	-3.5	-8.7	3.9
Prepared foodstuffs, beverages, and tobacco.....	IV	2.597	157.8	158.2	6.3	-0.1	-0.2	0.1	0.3
Cocoa and cocoa preparations (Dec. 2009=100).....	18	0.205	94.3	96.3	0.6	0.6	-0.7	-4.4	2.1
Preparations of cereals, flour, starch or milk; bakers' wares (Dec. 2007=100).....	19	0.256	125.7	125.4	-9.1	-0.3	-0.6	-0.9	-0.2
Preparations of vegetables, fruit, nuts, or other parts of plants.....	20	0.378	163.3	170.2	17.0	0.7	-1.5	2.1	4.2
Beverages, spirits, and vinegar.....	22	0.869	122.4	122.5	1.8	-0.7	0.2	0.3	0.1
Mineral products.....	V	25.836	345.0	357.3	31.7	-2.0	-1.0	-1.4	3.6
Mineral fuels, oils and residuals, bituminous substances and mineral waxes.....	27	25.475	340.9	353.2	31.8	-2.1	-1.0	-1.4	3.6
Products of the chemical or allied industries.....	VI	8.895	150.1	150.2	5.4	0.2	0.3	1.6	0.1
Inorganic chemicals.....	28	1.130	381.3	391.8	21.5	-0.3	1.2	1.0	2.8
Organic chemicals.....	29	2.799	137.0	135.9	0.5	0.7	0.1	-0.9	-0.8
Pharmaceutical products.....	30	3.240	117.4	117.4	1.8	0.0	0.3	4.9	0.0
Fertilizers (Dec. 2009=100).....	31	0.305	150.2	151.0	40.3	0.9	1.1	-0.3	0.5
Essential oils and resinoids (Dec. 2001=100).....	33	0.426	127.4	127.4	2.7	-0.3	0.2	0.6	0.0
Miscellaneous chemical products.....	38	0.487	106.0	104.5	5.7	-1.0	-0.8	-0.7	-1.4
Plastics and articles thereof; rubber and articles thereof.....	VII	2.955	153.6	152.9	9.1	0.1	0.5	0.3	-0.5
Plastics and articles thereof.....	39	1.815	142.5	142.1	6.8	0.1	0.6	0.1	-0.3
Rubber and articles thereof.....	40	1.140	174.9	173.7	13.2	0.0	0.2	0.6	-0.7
Raw hides, skins, leather, furskins, travel goods, etc.....	VIII	0.536	122.5	123.4	7.1	0.0	0.1	0.3	0.7
Articles of leather; travel goods, bags, etc. of various materials.....	42	0.491	122.9	123.9	7.5	0.0	0.1	0.4	0.8
Wood, wood charcoal, cork, straw, basketware and wickerwork.....	IX	0.674	130.2	129.6	3.0	0.2	0.5	-1.2	-0.5
Woodpulp, recovered paper, and paper products.....	X	1.269	115.1	115.0	0.6	-1.0	-0.5	0.3	-0.1
Paper and paperboard; articles of paper pulp, paper or paperboard.....	48	0.853	109.4	109.9	3.0	-0.2	-0.4	0.6	0.5
Textile and textile articles.....	XI	5.263	115.8	115.9	10.3	1.1	0.3	0.3	0.1
Articles of apparel and clothing accessories, knitted or crocheted.....	61	2.014	106.9	107.1	6.9	-0.5	0.0	0.2	0.2
Articles of apparel and clothing accessories, not knitted or crocheted.....	62	1.969	116.9	117.1	12.7	3.5	0.3	0.6	0.2
Made-up or worn textile articles.....	63	0.657	113.2	113.2	15.4	0.1	1.3	0.0	0.0
Headgear, umbrellas, artificial flowers, etc..	XII	1.227	114.6	114.8	5.5	0.3	0.1	0.6	0.2

See footnotes at end of table.

Table 5. U.S. import price indexes and percent changes for selected categories of goods: November 2010 to November 2011 — Continued
 [2000=100, unless otherwise noted]

Description	Harmonized system	Relative importance Oct. 2011 ¹	Index		Percent change				
			Oct. 2011	Nov. 2011	Annual	Monthly			
					Nov. 2010 to Nov. 2011	July 2011 to Aug. 2011	Aug. 2011 to Sept. 2011	Sept. 2011 to Oct. 2011	Oct. 2011 to Nov. 2011
Footwear and parts of such articles.....	64	1.049	113.9	114.1	5.7	0.3	0.1	0.7	0.2
Stone, plaster, cement, asbestos, ceramics, glass etc.....	XIII	0.710	130.3	130.3	3.3	0.3	0.1	0.5	0.0
Articles of stone, plaster, cement, asbestos, or mica (Dec. 2001=100).....	68	0.245	123.7	123.7	4.4	0.3	-0.2	1.4	0.0
Ceramic products.....	69	0.204	141.1	141.1	2.0	-0.1	0.0	0.0	0.0
Glass and glassware.....	70	0.261	124.6	124.6	3.3	0.6	0.5	-0.2	0.0
Pearls, stones, precious metals, imitation jewelry, and coins.....	XIV	3.200	206.6	202.4	17.5	3.1	5.2	-4.0	-2.0
Base metals and articles of base metals.....	XV	5.002	194.4	190.3	1.5	0.6	-1.5	-2.2	-2.1
Iron and steel.....	72	0.941	256.1	248.7	8.4	-0.8	-0.2	-2.1	-2.9
Articles of iron or steel.....	73	1.559	161.7	161.8	6.0	0.2	0.4	0.3	0.1
Copper and articles thereof.....	74	0.526	358.2	338.4	-9.2	3.5	-5.7	-9.5	-5.5
Nickel and articles thereof (Dec. 2009=100)...	75	0.147	118.0	109.3	-18.3	5.2	-4.8	-6.7	-7.4
Aluminum and articles thereof.....	76	0.860	147.4	143.6	-0.5	-0.8	-2.5	-2.2	-2.6
Tools, implements, cutlery, spoons and forks, of base metal; parts thereof.....	82	0.316	123.7	123.6	3.6	0.0	0.6	-0.4	-0.1
Miscellaneous articles of base metal.....	83	0.363	131.9	132.0	3.4	0.5	-0.1	0.2	0.1
Machinery, electrical equipment, TV image and sound recorders, parts, etc.....	XVI	23.013	85.5	85.5	-0.6	0.0	0.0	-0.3	0.0
Machinery and mechanical appliances; parts thereof.....	84	11.434	88.4	88.5	0.0	0.1	0.1	-0.3	0.1
Electrical machinery and equip, sound and TV recorders & reproducers, parts.....	85	11.579	82.7	82.6	-1.2	-0.1	-0.1	-0.2	-0.1
Vehicles, aircraft, vessels and associated transport equipment.....	XVII	8.660	114.6	114.7	3.6	0.2	0.2	-0.2	0.1
Motor vehicles and their parts.....	87	7.700	113.8	113.9	3.7	0.2	0.2	-0.2	0.1
Aircraft, spacecraft, and parts thereof (Dec. 2002=100).....	88	0.872	115.8	115.8	1.8	0.2	0.0	-0.1	0.0
Optical, photo, measuring, medical & musical instruments; & timepieces.....	XVIII	3.120	105.1	105.1	3.4	0.0	0.2	-0.4	0.0
Optical, photographic, measuring and medical instruments.....	90	2.880	102.8	102.7	3.5	0.0	0.2	-0.3	-0.1
Clocks and watches and parts thereof.....	91	0.178	127.7	127.4	2.7	0.2	0.6	-1.2	-0.2
Miscellaneous manufactured articles.....	XX	3.522	111.6	111.7	4.4	0.2	0.3	0.6	0.1
Furniture & stuffed furnishings; lamps & lighting fittings, nesoi; prefab bldgs.....	94	1.735	115.4	115.5	5.0	0.3	0.4	0.5	0.1
Toys, games and sports equipment; parts and accessories thereof.....	95	1.582	104.4	104.5	3.5	0.1	0.2	0.9	0.1
Miscellaneous manufactured articles.....	96	0.205	133.2	133.2	7.0	-0.1	0.3	-0.1	0.0

¹ Relative importance figures are based on 2009 trade values.

NOTES: Data may be revised in each of the three months after original publication.

Dash = Not available

Table 6. U.S. export price indexes and percent changes for selected categories of goods: November 2010 to November 2011

[2000=100, unless otherwise noted]

Description	Harmoni- zied system	Relative importance Oct. 2011 ¹	Index		Percent change				
			Oct. 2011	Nov. 2011	Annual	Monthly			
					Nov. 2010 to Nov. 2011	July 2011 to Aug. 2011	Aug. 2011 to Sept. 2011	Sept. 2011 to Oct. 2011	Oct. 2011 to Nov. 2011
Live animals; animal products.....	I	2.084	208.6	208.7	17.2	2.6	0.4	1.6	0.0
Meat & edible meat offal (Dec. 2006=100). . .	02	1.281	170.6	171.2	17.7	1.5	2.4	1.7	0.4
Fish and crustaceans, molluscs and other aquatic invertebrates.....	03	0.431	197.3	195.5	20.7	0.5	-0.7	-0.7	-0.9
Vegetable products.....	II	5.559	226.9	236.8	6.2	3.7	3.4	-11.6	4.4
Edible fruit and nuts; peel of citrus fruit or melons.....	08	0.910	123.6	127.8	1.1	2.2	-7.5	0.7	3.4
Cereals.....	10	2.193	274.3	291.7	12.5	8.0	8.0	-15.7	6.3
Oilseeds and misc. grains, seeds, fruits, plants, straw and fodder.....	12	1.886	229.6	239.1	-0.9	2.1	3.1	-15.6	4.1
Animal or vegetable fats and oils (Dec. 2009=100).....	III	0.511	149.9	147.9	18.5	0.0	0.6	-7.0	-1.3
Prepared foodstuffs, beverages, and tobacco.....	IV	2.701	152.8	150.8	3.1	0.1	1.3	0.1	-1.3
Preparations of vegetables, fruit, nuts or other parts of plants (Dec. 2009=100).....	20	0.352	110.6	110.9	7.3	0.7	-0.1	1.3	0.3
Miscellaneous edible preparations.....	21	0.437	117.4	117.8	-1.2	0.2	-0.2	-0.3	0.3
Beverages, spirits, and vinegar (Dec. 2008=100).....	22	0.334	105.4	104.6	-0.8	0.3	0.0	-0.3	-0.8
Residues and waste from the food industries; prepared animal feed.....	23	0.707	220.7	210.3	-3.1	-2.1	3.2	-2.3	-4.7
Mineral products.....	V	8.576	318.1	327.5	20.4	-0.7	0.1	-5.7	3.0
Mineral fuels, oils and residuals, bituminous substances and mineral waxes.....	27	7.981	314.2	324.5	23.2	-0.8	0.2	-6.0	3.3
Products of the chemical or allied industries.....	VI	12.953	154.2	154.8	4.7	0.4	-0.1	-0.8	0.4
Inorganic chemicals.....	28	1.012	195.2	196.0	2.1	-0.1	-1.0	0.2	0.4
Organic chemicals.....	29	3.306	164.7	165.9	7.9	0.6	-0.7	-2.3	0.7
Pharmaceutical products.....	30	3.871	124.4	124.1	-1.8	0.0	-0.2	-1.2	-0.2
Tanning or dyeing extracts, dyes, paints, varnish, putty, & inks.....	32	0.653	145.3	151.7	24.0	4.8	4.4	4.6	4.4
Essential oils and resinoids; perfumery cosmetic or toilet preparations.....	33	0.770	133.7	133.3	5.5	0.5	0.3	-0.4	-0.3
Soap; lubricants; waxes, polishing or scouring products; candles, pastes.....	34	0.473	123.2	125.4	3.7	0.9	0.1	0.2	1.8
Miscellaneous chemical products.....	38	1.842	150.2	149.8	4.5	-0.9	0.1	-0.5	-0.3
Plastics and articles thereof; rubber and articles thereof.....	VII	5.296	150.9	147.6	5.8	0.6	-0.1	-1.6	-2.2
Plastics and articles thereof.....	39	4.203	140.6	138.1	3.8	0.4	0.0	-2.0	-1.8
Rubber and articles thereof.....	40	1.093	200.6	192.6	14.4	1.3	-0.4	-0.2	-4.0
Raw hides, skins, leather, furskins, travel goods, etc.....	VIII	0.415	130.3	122.4	0.3	0.2	-1.9	-2.3	-6.1
Wood, wood charcoal, cork, straw, basketware and wickerwork.....	IX	0.506	109.2	109.5	-1.0	0.0	0.7	-0.2	0.3
Woodpulp, recovered paper, and paper products.....	X	2.664	124.7	119.7	-3.3	0.3	-0.9	-1.7	-4.0
Woodpulp and recovered paper.....	47	0.903	145.7	130.2	-10.8	0.5	-2.3	-4.1	-10.6
Paper and paperboard; articles of paper pulp, paper or paperboard.....	48	1.271	119.0	118.1	0.3	0.4	-0.3	-0.7	-0.8
Printed material.....	49	0.490	119.3	119.3	1.7	0.0	0.0	0.2	0.0
Textile and textile articles.....	XI	2.108	135.4	134.1	-2.4	-3.4	-1.5	-1.7	-1.0
Cotton, including yarns and woven fabrics thereof.....	52	0.817	182.5	177.8	-13.0	-8.5	-3.3	-4.2	-2.6

See footnotes at end of table.

Table 6. U.S. export price indexes and percent changes for selected categories of goods: November 2010 to November 2011 — Continued
 [2000=100, unless otherwise noted]

Description	Harmoni- zied system	Relative importance Oct. 2011 ¹	Index		Percent change				
			Oct. 2011	Nov. 2011	Annual	Monthly			
					Nov. 2010 to Nov. 2011	July 2011 to Aug. 2011	Aug. 2011 to Sept. 2011	Sept. 2011 to Oct. 2011	Oct. 2011 to Nov. 2011
Stone, plaster, cement, asbestos, ceramics, glass etc. (Dec. 2008=100).....	XIII	0.687	116.9	116.8	0.3	-0.1	0.6	0.3	-0.1
Glass and glassware.....	70	0.383	99.5	99.4	0.7	0.0	0.0	0.5	-0.1
Pearls, stones, precious metals, imitation jewelry, and coins.....	XIV	5.760	295.9	291.4	25.8	3.0	5.8	-3.0	-1.5
Base metals and articles of base metals.....	XV	5.629	176.0	173.9	5.1	0.2	-0.4	-4.1	-1.2
Iron and steel.....	72	1.827	223.7	211.2	10.7	0.5	1.0	-3.9	-5.6
Articles of iron or steel.....	73	1.279	171.3	172.8	8.2	-0.1	0.1	0.5	0.9
Copper and articles thereof.....	74	0.618	233.6	247.5	-2.0	0.4	-3.3	-17.1	6.0
Aluminum and articles thereof.....	76	0.906	129.5	128.2	-1.1	0.0	-1.8	-4.4	-1.0
Tools, implements, cutlery, spoons and forks, of base metal; parts thereof.....	82	0.341	128.4	128.4	2.4	0.0	-0.1	0.9	0.0
Miscellaneous articles of base metal.....	83	0.309	135.7	135.7	9.3	0.0	0.0	0.0	0.0
Machinery, electrical equipment, TV image and sound recorders, parts, etc.....	XVI	26.464	96.3	96.2	0.7	0.1	-0.1	-0.1	-0.1
Machinery and mechanical appliances; parts thereof.....	84	15.533	108.4	108.4	1.4	0.1	0.0	-0.2	0.0
Electrical machinery and equipment and parts and accessories thereof.....	85	10.931	83.2	82.9	-0.2	0.1	-0.1	0.0	-0.4
Vehicles, aircraft, vessels and associated transport equipment.....	XVII	10.751	124.3	124.4	2.0	0.2	0.0	0.3	0.1
Motor vehicles and their parts.....	87	6.051	111.1	111.2	2.1	0.2	0.2	0.5	0.1
Optical, photo, measuring, medical & musical instruments; & timepieces.....	XVIII	5.809	105.7	105.7	-1.4	0.2	0.0	0.1	0.0
Miscellaneous manufactured articles.....	XX	1.378	108.4	108.3	0.7	0.6	0.0	-0.6	-0.1
Furniture; stuffed furnishings; lamps and lighting fittings nesoi;.....	94	0.656	119.0	118.8	0.3	0.8	-0.2	-1.1	-0.2
Toys, games and sports equipment; parts and accessories thereof.....	95	0.595	90.0	90.0	-2.4	0.6	0.1	0.0	0.0

1 Relative importance figures are based on 2009 trade values.

NOTES: Data may be revised in each of the three months after original publication.

Dash = Not available

Table 7. U.S. import price indexes and percent changes by locality of origin: November 2010 to November 2011
 [2000=100, unless otherwise noted]

Description	Percent of U.S. imports ¹	Index		Percent change				
		Oct. 2011	Nov. 2011	Annual	Monthly			
				Nov. 2010 to Nov. 2011	July 2011 to Aug. 2011	Aug. 2011 to Sept. 2011	Sept. 2011 to Oct. 2011	Oct. 2011 to Nov. 2011
Industrialized Countries²	39.494	132.4	132.9	4.9	-0.5	-0.3	-0.5	0.4
Nonmanufactured articles.....	4.457	231.0	238.8	17.6	-5.7	-1.1	-0.9	3.4
Manufactured articles.....	34.670	124.4	124.3	3.2	0.4	-0.2	-0.4	-0.1
Other Countries³	60.506	140.7	142.3	11.9	-0.5	0.1	-0.4	1.1
Nonmanufactured articles.....	12.079	354.6	366.6	33.0	-2.6	0.2	-0.4	3.4
Manufactured articles.....	48.226	111.6	111.8	5.1	0.4	0.1	-0.4	0.2
Canada	14.271	153.8	154.3	6.9	-1.4	-0.8	-1.3	0.3
Nonmanufactured articles.....	3.991	221.2	229.1	16.8	-6.0	-0.5	-0.9	3.6
Manufactured articles.....	10.005	140.3	138.6	2.9	1.0	-0.9	-1.3	-1.2
European Union⁴	17.186	136.8	137.0	6.1	-0.1	0.0	0.2	0.1
Nonmanufactured articles.....	0.256	322.7	332.9	26.9	-3.0	-4.7	-7.9	3.2
Manufactured articles.....	16.854	133.5	133.6	5.6	-0.1	0.1	0.4	0.1
France (Dec. 2003=100)	1.995	120.6	120.8	-0.8	-0.2	-0.1	0.3	0.2
Germany (Dec. 2003=100)	4.510	115.6	115.4	2.4	-0.1	0.0	-0.3	-0.2
United Kingdom (Dec. 2003=100)	2.795	130.7	131.0	2.9	-0.2	-0.4	-2.2	0.2
Latin America⁵	18.406	177.4	178.9	11.0	-1.2	0.2	-1.3	0.8
Nonmanufactured articles.....	5.479	372.6	384.1	27.9	-3.7	1.2	-1.7	3.1
Manufactured articles.....	12.844	135.2	134.5	2.1	0.4	-0.6	-1.1	-0.5
Mexico (Dec. 2003=100)	11.380	146.0	146.1	5.3	-1.1	0.0	-0.7	0.1
Nonmanufactured articles (Dec. 2008=100).....	1.900	200.2	205.9	29.6	-4.7	0.5	-1.2	2.8
Manufactured articles (Dec. 2008=100)....	9.437	95.9	95.2	-1.0	0.1	-0.2	-0.6	-0.7
Pacific Rim (Dec. 2003=100)⁶	34.852	104.5	104.8	3.4	0.0	0.1	-0.2	0.3
China (Dec. 2003=100)	19.595	104.7	105.0	3.9	0.1	0.2	0.4	0.3
Japan	6.198	101.9	102.0	2.5	0.3	0.0	0.2	0.1
Asian NICs⁷	5.555	91.2	91.1	4.1	0.0	-0.1	-0.7	-0.1
ASEAN (Dec. 2003=100)⁸	5.987	104.9	105.3	6.9	0.7	0.2	-0.9	0.4
Asia Near East (Dec. 2003=100)⁹	3.795	280.3	289.4	35.4	-0.8	1.9	1.0	3.2

1 Percentage of trade figures are based on 2009 trade values.

2 Includes Western Europe, Canada, Japan, Australia, New Zealand and South Africa.

3 Includes Eastern Europe, Latin America, OPEC countries, and other countries in Asia, Africa and the Western Hemisphere.

4 Includes European Union countries.

5 Includes Mexico, Central America, South America and the Caribbean.

6 Includes China, Japan, Australia, Brunei, Indonesia, Macao, Malaysia, New Zealand, Papua New Guinea, Philippines and Asian Newly Industrialized Countries.

7 Asian Newly Industrialized Countries. Includes Hong Kong, Singapore, South Korea and Taiwan.

8 Association of Southeast Asian Nations. Includes Brunei, Cambodia, Indonesia, Laos, Malaysia, Myanmar, Philippines, Singapore, Thailand and Vietnam.

9 Includes Bahrain, Iran, Iraq, Israel, Jordan, Kuwait, Lebanon, Oman, Qatar, Saudi Arabia, Syria, United Arab Emirates and Yemen.

NOTES: Data may be revised in each of the three months after original publication.

Regions are not mutually exclusive.

Dash = Not available

Table 8. U.S. international price indexes and percent changes for selected transportation services: November 2010 to November 2011

[2000=100, unless otherwise noted]

Description	Relative importance Oct. 2011 ¹	Index		Percent change				
		Oct. 2011	Nov. 2011	Annual	Monthly			
				Nov. 2010 to Nov. 2011	July 2011 to Aug. 2011	Aug. 2011 to Sept. 2011	Sept. 2011 to Oct. 2011	Oct. 2011 to Nov. 2011
Air Freight								
Import Air Freight	100.000	181.3	178.3	5.1	1.1	-0.3	-2.3	-1.7
Europe (Dec. 2003=100).....	25.868	174.6	168.8	18.8	6.7	-0.4	-2.9	-3.3
Asia.....	72.127	159.4	157.6	1.0	-0.7	-0.3	-2.1	-1.1
Export Air Freight	100.000	145.3	144.0	13.2	-0.4	0.3	-0.8	-0.9
Europe (Dec. 2006=100).....	38.871	131.8	130.4	13.2	-0.5	0.3	-0.3	-1.1
Inbound Air Freight	100.000	163.5	162.1	6.1	0.4	0.0	-0.4	-0.9
Europe (Dec. 2003=100).....	24.835	153.1	149.4	13.2	2.7	0.2	-2.9	-2.4
Asia.....	64.946	147.1	146.8	4.3	-0.5	-0.1	0.5	-0.2
Outbound Air Freight	100.000	144.5	143.5	15.1	1.3	0.2	0.4	-0.7
Europe (Dec. 2003=100).....	36.630	163.8	163.3	13.2	1.8	-0.5	2.1	-0.3
Asia.....	44.784	135.0	133.4	17.7	1.4	0.9	-1.6	-1.2
Air Passenger Fares								
Import Air Passenger Fares	100.000	177.9	176.7	6.2	-3.0	-2.1	1.9	-0.7
Europe.....	38.258	186.5	180.0	-0.7	-6.6	0.0	2.0	-3.5
Asia.....	25.639	151.4	155.2	8.7	-2.2	-3.4	-0.3	2.5
Latin America/Caribbean.....	14.423	171.0	173.1	10.5	2.3	-7.9	2.0	1.2
Export Air Passenger Fares	100.000	187.7	181.5	11.4	8.5	-13.4	-2.5	-3.3
Europe.....	31.405	229.4	211.2	14.0	-1.8	-12.1	-0.6	-7.9
Asia.....	30.109	170.9	173.6	9.0	23.4	-17.1	-5.5	1.6
Latin America/Caribbean.....	19.050	184.5	183.9	6.9	-1.1	-3.1	-3.6	-0.3

¹ Relative importance figures are based on 2009 trade values.

NOTES: Data may be revised in each of the three months after original publication.

Dash = Not available

TECHNICAL NOTE

Import and Export Merchandise and Services Price Indexes -- All indexes use a modified Laspeyres formula and are not seasonally adjusted. Price indexes are reweighted annually, with a two-year lag in the weights. Published series use a base year of 2000=100 where possible. More detailed index series and additional information may be obtained at <http://www.bls.gov/mxp>, or by calling (202) 691-7101.

Merchandise Goods Classification Systems -- The merchandise price indexes are published using three classification systems. Items are classified by end use according to the Bureau of Economic Analysis Classification System, by industry according to the North American Industry Classification System (NAICS), and by product category according to the Harmonized System (HS). While classification by end use and product category are self-explanatory, some notes are in order for classifying items by industry. In the NAICS imports and exports tables, items are classified by output industry, not input industry. As an example, NAICS import index 326 (plastics and rubber products manufacturing) include outputs such as manufactured plastic rather than inputs such as petroleum. The NAICS classification structure also matches the classification system used by the PPI (Producer Price Index) to produce the NAICS primary products indexes.

Import Price Indexes -- Products have been classified by the Harmonized Tariff Schedule of the United States Annotated (TSUSA). Import prices are based on U.S. dollar prices paid by the U.S. importer. The prices are generally either "free on board" (f.o.b.) foreign port or "cost, insurance, and freight" (c.i.f.) U.S. port transaction prices, depending on the practices of the individual industry. The index for crude petroleum is calculated from data collected by the U.S. Department of Energy.

Export Price Indexes -- Products have been classified by the Harmonized Schedule B classification system of the U.S. Bureau of the Census. The prices used are generally either "free alongside ship" (f.a.s.) factory or "free on board" (f.o.b.) transaction prices, depending on the practices of the individual industry. Prices used in the grain index, excluding rice, are obtained from the U.S. Department of Agriculture.

Services Price Indexes -- Starting in September 2008 the Import Air Passenger Fares Indexes represent changes in the average revenue per passenger received by foreign carriers from U.S. residents and are calculated from data obtained from an airline consulting service. These data include tickets sold by travel agencies and travel websites. Tickets sold directly by the airlines are excluded, as are frequent flyer tickets generally. Starting in January 2008 the Export Air Passenger Fares Indexes represent changes in the average revenue per passenger received by U.S. carriers from foreign residents and are calculated from data collected directly from airlines. These data include frequent flyer tickets and those sold by consolidators. Taxes and fees are included in the Import Air Passenger Fares Index and excluded from the Export Air Passenger Fares Index. The Air Freight Indexes are calculated from data collected directly from airlines. These data exclude mail and passenger baggage. The scope of the service being priced is the movement of freight from airport to airport only, and does not include any ground transportation or port service. The Air Freight Indexes are presented using two definitions: Balance of Payments (which represent transactions between U.S. and foreign residents) and International (which represent transactions inbound to and outbound from the U.S.). Fact sheets specifying detailed information for each services industry are available at <http://www.bls.gov/mxp> under "MXP Publications."

Import Indexes by Locality of Origin -- Prices used in these indexes are a subset of the data collected for the Import Price Indexes. Beginning with January 2002, the indexes are defined by locality of origin using a nomenclature based upon the North American Industry Classification System (NAICS). Nonmanufactured goods are defined as NAICS 11 and 21 and manufactured goods are defined as NAICS 31-33.

Revision Policy -- To reflect the availability of late reports and corrections by respondents, monthly data may be revised in each of the three months after original publication. After three months, no further data revisions take place. So, for example, data released in the January release will be subject to revision in the releases for February, March, and April.

Uses of the Data -- The primary use of the indexes is to deflate trade statistics, notably the foreign trade sector of the National Income and Product Accounts constructed by the Department of Commerce. Other published indexes are useful for general market analysis. For trade in international services, Balance of Payments indexes are used for deflating National Income and Product Accounts, while International indexes are more appropriate for market analysis. Merchandise and services indexes also can be used to study U.S. competitiveness and to compute price elasticities, and the merchandise import indexes by country or region of origin are useful in terms of trade analysis.

E-Mail Subscription -- The U.S. Import and Export Price Indexes news release is available through an e-mail subscription service at (<http://www.bls.gov/bls/list.htm>).

Additional Information -- More detailed data are available on the Import/Export Price Indexes home page at (<http://www.bls.gov/mxp>). Flat Files and the FTP server are available for users requiring access to either a large volume of time series data or other related documentation. The FTP site can be accessed at <ftp://ftp.bls.gov>. For technical assistance in using the BLS Internet site, send e-mail to (labstat.helpdesk@bls.gov). For Import/Export Price Index data requests, send e-mail to (mxpinfo@bls.gov).

Information from this release will be made available to sensory impaired individuals upon request. Voice phone: 202-691-5200; Federal Relay Service: 1-800-877-8339.