



NEWS RELEASE



Transmission of material in this release is embargoed until 8:30 a.m. (EST) February 19, 2016

USDL-16-0328

Technical information: (202) 691-7000 • Reed.Steve@bls.gov • www.bls.gov/cpi
Media Contact: (202) 691-5902 • PressOffice@bls.gov

CONSUMER PRICE INDEX – JANUARY 2016

The Consumer Price Index for All Urban Consumers (CPI-U) was unchanged in January on a seasonally adjusted basis, the U.S. Bureau of Labor Statistics reported today. Over the last 12 months, the all items index increased 1.4 percent before seasonal adjustment.

An increase in the index for all items less food and energy offset a decline in the energy index to lead to the seasonally adjusted all items index being unchanged. The energy index fell 2.8 percent as all of its major component indexes declined. The index for all items less food and energy rose 0.3 percent in January. The increase was broad-based, with most of the major components rising, but increases in the indexes for shelter and medical care were the largest contributors.

The food index was unchanged in January. The index for food away from home increased, but the food at home index declined for the third consecutive month, as five of the six major grocery store food group indexes decreased.

The all items index rose 1.4 percent over the last 12 months, compared to the 0.7-percent 12-month increase for the period ending December. The energy index fell 6.5 percent over the past year; this was its smallest 12-month decrease since November 2014. The food index rose 0.8 percent over the last 12 months, with the food at home index declining 0.5 percent. The index for all items less food and energy increased 2.2 percent over the last 12 months, a figure that has been gradually rising over the last several months.

Chart 1. One-month percent change in CPI for All Urban Consumers (CPI-U), seasonally adjusted, Jan. 2015 - Jan. 2016
Percent change

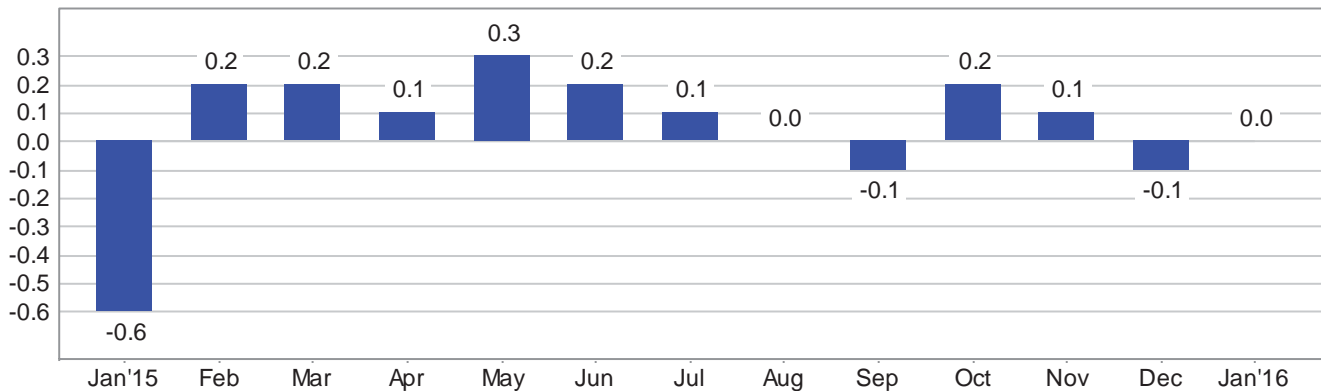


Chart 2. 12-month percent change in CPI for All Urban Consumers (CPI-U), not seasonally adjusted, Jan. 2015 - Jan. 2016

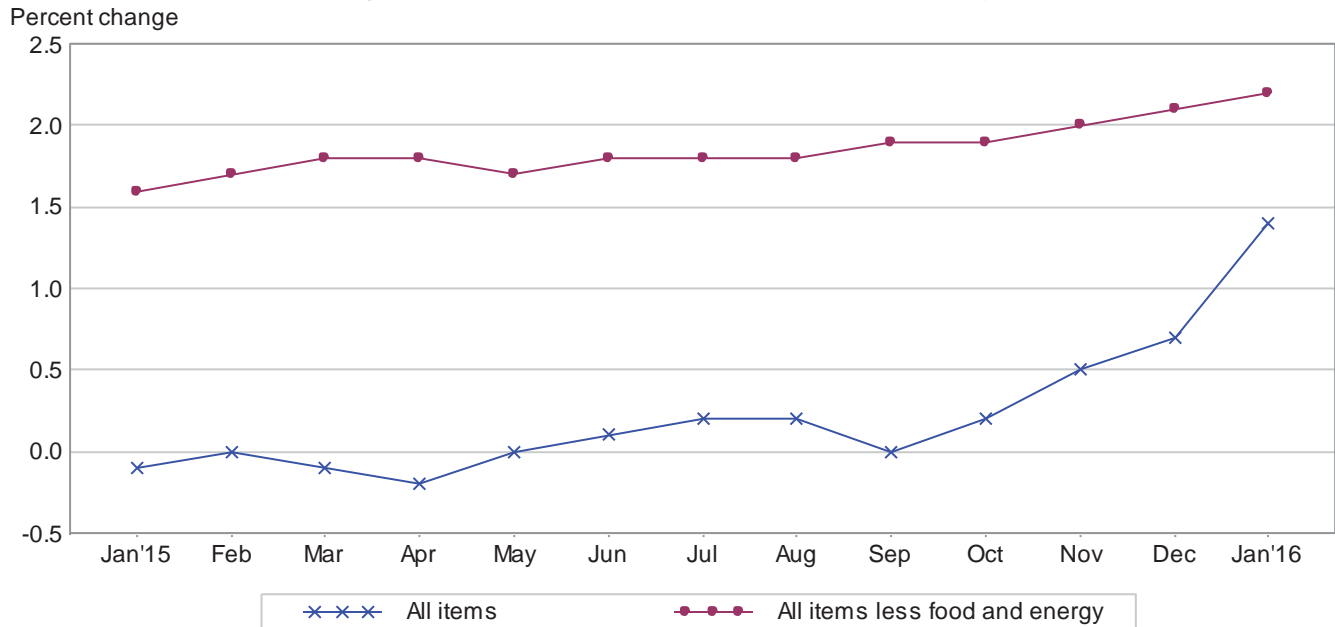


Table A. Percent changes in CPI for All Urban Consumers (CPI-U): U.S. city average

	Seasonally adjusted changes from preceding month							Un-adjusted 12-mos. ended Jan. 2016
	July 2015	Aug. 2015	Sep. 2015	Oct. 2015	Nov. 2015	Dec. 2015	Jan. 2016	
All items1	.0	-.1	.2	.1	-.1	.0	1.4
Food1	.2	.3	.1	-.1	-.2	.0	.8
Food at home1	.2	.2	.0	-.3	-.4	-.2	-.5
Food away from home ¹0	.2	.5	.2	.2	.1	.3	2.7
Energy0	-1.7	-3.7	.4	.3	-2.8	-2.8	-6.5
Energy commodities5	-3.4	-6.8	.9	.7	-4.8	-4.8	-8.5
Gasoline (all types)7	-3.4	-7.1	.9	.8	-4.8	-4.8	-7.3
Fuel oil ¹	-3.4	-8.1	-2.4	-1.1	-1.3	-7.8	-6.5	-28.7
Energy services	-.6	.3	-.3	-.1	-.2	-.7	-.7	-4.7
Electricity	-.3	.2	-.1	.1	.2	-.4	-.7	-2.4
Utility (piped) gas service	-1.7	.6	-.9	-.9	-1.7	-1.9	-.6	-12.7
All items less food and energy2	.1	.2	.2	.2	.2	.3	2.2
Commodities less food and energy								
commodities	-.1	-.1	.0	-.1	-.1	-.1	.2	-.1
New vehicles	-.1	.0	.0	-.1	.0	.0	.3	.6
Used cars and trucks	-.4	-.3	-.2	-.1	.1	.2	.1	.9
Apparel2	.2	-.4	-.5	-.1	-.2	.6	-.5
Medical care commodities1	.2	-.1	.2	.2	.1	.4	2.1
Services less energy services2	.2	.3	.3	.3	.2	.3	3.0
Shelter3	.2	.3	.3	.2	.2	.3	3.2
Transportation services	-.1	.0	.1	.1	.5	.3	.4	2.7
Medical care services2	.0	.2	.7	.3	.1	.5	3.3

¹ Not seasonally adjusted.

Consumer Price Index Data for January 2016

Food

The food index was unchanged in January after declining in November and December. The index for food at home declined for the third month in a row, falling 0.2 percent. Five of the six major grocery store food group indexes declined in January, led by the index for meats, poultry, fish, and eggs, which fell 1.3 percent. The eggs index fell sharply in January, declining 8.4 percent, its largest 1-month decline since October 2010. In contrast, the index for fruits and vegetables increased 1.3 percent, its largest increase since March 2011, with the fresh vegetables index rising 2.2 percent. The other major grocery store food group indexes (cereals and bakery products, dairy and related products, nonalcoholic beverages, and other food at home) all declined 0.2 percent. The food at home index has declined over the past 12 months, falling 0.5 percent. The index for meats, poultry, fish and eggs has fallen 3.5 percent and the dairy and related products index has declined 3.0 percent. The other major grocery store food group indexes increased, with the fruits and vegetables index rising 2.7 percent over the last 12 months and the remaining indexes all advancing less than 1 percent. The index for food away from home increased 0.3 percent in January and has risen 2.7 percent over the last 12 months.

Energy

The energy index fell 2.8 percent in January. For the second month in a row, all the major energy component indexes declined. The gasoline index fell 4.8 percent in January. (Before seasonal adjustment, gasoline prices declined 4.4 percent in January, and the index is at its lowest level since March 2009.) The fuel oil index fell 6.5 percent in January, while the electricity index declined 0.7 percent and the index for natural gas decreased 0.6 percent. All the energy component indexes have also declined over the last 12 months. The fuel oil index has fallen sharply, declining 28.7 percent, and the index for natural gas has decreased 12.7 percent. The gasoline index has declined 7.3 percent and the index for electricity has fallen 2.4 percent.

All items less food and energy

The index for all items less food and energy percent increased 0.3 in January. The shelter index rose 0.3 percent, with the rent index rising 0.3 percent and the index for owners' equivalent rent increased 0.2 percent. The index for lodging away from home also increased in January, rising 2.0 percent after falling in December. The medical care index rose 0.5 percent in January, with the index for prescription drugs rising 0.5 percent and the index for hospital services increasing 0.4 percent. The apparel index turned up in January, rising 0.6 percent after a series of recent declines. The index for airline fares rose 1.2 percent after falling in December. The index for alcoholic beverages rose 0.5 percent, and the motor vehicle insurance index increased 0.4 percent. Also increasing in January were the indexes for new vehicles (0.3 percent), tobacco (0.2 percent), recreation (0.2 percent), used cars and trucks (0.1 percent), and personal care (0.1 percent). The indexes for education and for communication were both unchanged in January, while the index for household furnishings and operations declined slightly, falling 0.1 percent.

The index for all items less food and energy increased 2.2 percent over the past 12 months. This is its highest 12-month change since the period ending June 2012, and exceeds the 1.9 percent average annualized increase over the last 10 years. The index for shelter has risen 3.2 percent over the span, and the medical care index has increased 3.0 percent. In contrast, the indexes for apparel and for airline fares have declined over the past 12 months.

Not seasonally adjusted CPI measures

The Consumer Price Index for All Urban Consumers (CPI-U) increased 1.4 percent over the last 12 months to an index level of 236.916 (1982-84=100). For the month, the index increased 0.2 percent prior to seasonal adjustment.

The Consumer Price Index for Urban Wage Earners and Clerical Workers (CPI-W) increased 1.2 percent over the last 12 months to an index level of 231.061 (1982-84=100). For the month, the index increased 0.1 percent prior to seasonal adjustment.

The Chained Consumer Price Index for All Urban Consumers (C-CPI-U) increased 1.0 percent over the last 12 months. For the month, the index increased 0.1 percent on a not seasonally adjusted basis. Please note that the indexes for the past 10 to 12 months are subject to revision.

The Consumer Price Index for February 2016 is scheduled to be released on Wednesday, March 16, 2016, at 8:30 a.m. (EDT).

Facilities for Sensory Impaired

Information from this release will be made available to sensory impaired individuals upon request. Voice phone: 202-691-5200, Federal Relay Services: 1-800-877-8339.

Brief Explanation of the CPI

The Consumer Price Index (CPI) is a measure of the average change in prices over time of goods and services purchased by households. The Bureau of Labor Statistics publishes CPIs for two population groups: (1) the CPI for Urban Wage Earners and Clerical Workers (CPI-W), which covers households of wage earners and clerical workers that comprise approximately 28 percent of the total population and (2) the CPI for All Urban Consumers (CPI-U) and the Chained CPI for All Urban Consumers (C-CPI-U), which covers approximately 89 percent of the total population and includes, in addition to wage earners and clerical worker households, groups such as professional, managerial, and technical workers, the self-employed, short-term workers, the unemployed, and retirees and others not in the labor force.

The CPIs are based on prices of food, clothing, shelter, fuels, transportation fares, charges for doctors' and dentists' services, drugs, and other goods and services that people buy for day-to-day living. Prices are collected each month in 87 urban areas across the country from about 6,000 housing units and approximately 24,000 retail establishments-department stores, supermarkets, hospitals, filling stations, and other types of stores and service establishments. All taxes directly associated with the purchase and use of items are included in the index. Prices of fuels and a few other items are obtained every month in all 87 locations. Prices of most other commodities and services are collected every month in the three largest geographic areas and every other month in other areas. Prices of most goods and services are obtained by personal visits or telephone calls of the Bureau's trained representatives.

In calculating the index, price changes for the various items in each location are averaged together with weights, which represent their importance in the spending of the appropriate population group. Local data are then combined to obtain a U.S. city average. For the CPI-U and CPI-W separate indexes are also published by size of city, by region of the country, for cross-classifications of regions and population-size classes, and for 27 local areas. Area indexes do not measure differences in the level of prices among cities; they only measure the average change in prices for each area since the base period. For the C-CPI-U data are issued only at the national level. It is important to note that the CPI-U and CPI-W are considered final when released, but the C-CPI-U is issued in preliminary form and subject to two annual revisions.

The index measures price change from a designed reference date. For the CPI-U and the CPI-W the reference base is 1982-84 equals 100. The reference base for the C-CPI-U is December 1999 equals 100. An increase of 16.5 percent from the reference base, for example, is shown as 116.500. This change can also be expressed in dollars as follows: the price of a base period market basket of goods and services in the CPI has risen from \$10 in 1982-84 to \$11.65.

For further details visit the CPI home page on the Internet at www.bls.gov/cpi/ or contact our CPI Information and Analysis Section on (202) 691-7000.

Note on Sampling Error in the Consumer Price Index

The CPI is a statistical estimate that is subject to sampling error because it is based upon a sample of retail prices and not the complete universe of all prices. BLS calculates and publishes estimates of the 1-month, 2-month, 6-month and 12-month percent change standard errors annually, for the CPI-U. These standard error estimates can be used to construct confidence intervals for hypothesis testing. For example, the estimated standard error of the 1 month percent change is 0.04 percent for the U.S. All Items Consumer Price Index. This means that if we repeatedly sample from the universe of all retail prices using the same methodology, and estimate a percentage change for each sample, then 95% of these estimates would be within 0.08 percent of the 1 month percentage change based on all retail prices. For example, for a 1-month change of 0.2 percent in the All Items CPI for All Urban Consumers, we are 95 percent confident that the actual percent change based on all retail prices would fall between 0.12 and 0.28 percent. For the latest data, including information on how to use the estimates of standard error, see "Variance Estimates for Price Changes in the Consumer Price Index, January-December 2014." These data are available on the CPI home page (www.bls.gov/cpi), or by using the following link: www.bls.gov/cpi/cpivar2014.pdf

Calculating Index Changes

Movements of the indexes from one month to another are usually expressed as percent changes rather than changes in index points, because index point changes are affected by the level of the index in relation to its base period while percent changes are not. The example below illustrates the computation of index point and percent changes.

Percent changes for 3-month and 6-month periods are expressed as annual rates and are computed according to the standard formula for compound growth rates. These data indicate what the percent change would be if the current rate were maintained for a 12-month period.

Index Point Change

CPI	202.416
Less previous index	201.800
Equals index point change	.616

Percent Change

Index point difference	.616
Divided by the previous index	201.800
Equals	0.003
Results multiplied by one hundred	0.003x100
Equals percent change	0.3

A Note on the Use of Seasonally Adjusted and Unadjusted Data

Introduction

The Consumer Price Index (CPI) produces both unadjusted and seasonally adjusted data. Seasonally adjusted data are computed using seasonal factors derived by the X-13ARIMA-SEATS Seasonal Adjustment Method. These factors are updated each February, and the new factors are used to revise the previous five years of seasonally adjusted data. For more information on data revisions and exceptions to the usual revision schedule, please see the Fact Sheet on Seasonal Adjustment (<http://www.bls.gov/cpi/cpisaqanda.htm>) and the Timeline of Seasonal Adjustment Methodological Changes (<http://www.bls.gov/cpi/cpiseastimeline.htm>).

How to Use Seasonally Adjusted and Unadjusted Data

For analyzing short-term price trends in the economy, seasonally adjusted changes are usually preferred since they eliminate the effect of changes that normally occur at the same time and in about the same magnitude every year—such as price movements resulting from changing climatic conditions, production cycles, model changeovers, holidays, and sales. This allows data users to focus on changes that are not typical for the time of year.

The unadjusted data are of primary interest to consumers concerned about the prices they actually pay. Unadjusted data are also used extensively for escalation purposes. Many collective bargaining contract agreements and pension plans, for example, tie compensation changes to the Consumer Price Index before adjustment for seasonal variation. BLS advises against the use of seasonally adjusted data in escalation agreements because seasonally adjusted series are revised annually.

Intervention Analysis

The Bureau of Labor Statistics uses Intervention Analysis Seasonal Adjustment for some CPI series. Sometimes extreme values or sharp movements can distort the underlying seasonal pattern of price change. Intervention Analysis Seasonal Adjustment is a process by which the distortions caused by such unusual events are estimated and removed from the data prior to calculation of seasonal factors. The resulting seasonal factors, which more accurately represent the seasonal pattern, are then applied to the unadjusted data.

2016 Series Adjusted Using Intervention Analysis Seasonal Adjustment

For the seasonal factors introduced in January 2016, BLS adjusted 37 series using Intervention Analysis Seasonal Adjustment, including selected food and beverage items, motor fuels and natural gas. For example, this procedure was used for the *Motor fuel* series to offset the effects of events such as the response in crude oil markets to the worldwide economic downturn in 2008.

Revision of Seasonally Adjusted Indexes

Seasonally adjusted data, including the *U.S. city average All items* index levels, are subject to revision for up to five years after their original release. Every year, economists in the CPI calculate new seasonal factors for seasonally adjusted series and apply them to the last five years of data. Seasonally adjusted indexes beyond the last five years of data are considered to be final and not subject to revision. In

January 2016, revised seasonal factors and seasonally adjusted indexes for 2011-2015 were calculated and published. For directly adjusted series, the seasonal factors for 2015 will be applied to data in 2016 to produce the seasonally adjusted 2016 indexes.

Determining Seasonal Status

Each year the seasonal status of every series is reevaluated based upon certain statistical criteria. Using these criteria, BLS economists determine whether a series should change its status: from "not seasonally adjusted" to "seasonally adjusted", or vice versa. If any of the 81 components of the *U.S. city average all items* index change their seasonal adjustment status from seasonally adjusted to not seasonally adjusted, not seasonally adjusted data will be used in the aggregation of the dependent series for the last five years, but the seasonally adjusted indexes before that period will not be changed. 28 of the 81 components of the *U.S. city average all items* index are not seasonally adjusted for 2016.

Contact Information

For additional information on seasonal adjustment in the CPI, please write to the Bureau of Labor Statistics, Division of Consumer Prices and Price Indexes, Washington, DC 20212 or contact Justin Yarros, Samuel An or Marie Rogers at (202) 691-6968 or by e-mail at Yarros.Justin@bls.gov, An.Samuel@bls.gov or Rogers.Marie@bls.gov. If you have general questions about the CPI, please call our information staff at (202) 691-7000.

Revised seasonally adjusted changes

Over-the-month percent changes in the U.S. City Average Consumer Price Index for All Urban Consumers (CPI-U) for All Items and for All Items less food and energy, seasonally adjusted, using former and recalculated seasonal factors for 2015.

All Items

2015	Former	Recalculated	Difference
January	-.7	-.6	.1
February	.2	.2	.0
March	.2	.2	.0
April	.1	.1	.0
May	.4	.3	-.1
June	.3	.2	-.1
July	.1	.1	.0
August	-.1	.0	.1
September	-.2	-.1	.1
October	.2	.2	.0
November	.0	.1	.1
December	-.1	-.1	.0

All Items less food and energy

2015	Former	Recalculated	Difference
January	.2	.2	.0
February	.2	.2	.0
March	.2	.2	.0
April	.3	.2	-.1
May	.1	.1	.0
June	.2	.2	.0
July	.1	.2	.1
August	.1	.1	.0
September	.2	.2	.0
October	.2	.2	.0
November	.2	.2	.0
December	.1	.2	.1

Table 1. Consumer Price Index for All Urban Consumers (CPI-U): U.S. city average, by expenditure category, January 2016

[1982-84=100, unless otherwise noted]

Expenditure category	Relative importance Dec. 2015	Unadjusted indexes			Unadjusted percent change		Seasonally adjusted percent change		
		Jan. 2015	Dec. 2015	Jan. 2016	Jan. 2015-2016	Dec. 2015-2016	Oct. 2015-Nov. 2015	Nov. 2015-Dec. 2015	Dec. 2015-Jan. 2016
All items.....	100.000	233.707	236.525	236.916	1.4	0.2	0.1	-0.1	0.0
Food.....	14.015	246.538	247.903	248.631	0.8	0.3	-0.1	-0.2	0.0
Food at home.....	8.230	243.123	241.375	242.017	-0.5	0.3	-0.3	-0.4	-0.2
Cereals and bakery products.....	1.098	273.589	273.245	274.580	0.4	0.5	-0.4	-0.1	-0.2
Meats, poultry, fish, and eggs.....	1.876	260.982	255.298	251.783	-3.5	-1.4	-0.6	-1.1	-1.3
Dairy and related products.....	0.846	227.800	220.848	220.869	-3.0	0.0	-0.5	0.0	-0.2
Fruits and vegetables.....	1.399	298.781	299.078	306.796	2.7	2.6	0.5	-0.2	1.3
Nonalcoholic beverages and beverage materials.....	0.977	168.603	167.482	168.718	0.1	0.7	-0.3	-0.1	-0.2
Other food at home.....	2.033	207.218	208.915	208.810	0.8	-0.1	-0.3	-0.2	-0.2
Food away from home ¹	5.785	253.037	259.097	259.958	2.7	0.3	0.2	0.1	0.3
Energy.....	6.816	192.619	183.378	180.171	-6.5	-1.7	0.3	-2.8	-2.8
Energy commodities.....	3.228	192.221	184.048	175.931	-8.5	-4.4	0.7	-4.8	-4.8
Fuel oil ¹	0.093	273.718	208.561	195.029	-28.7	-6.5	-1.3	-7.8	-6.5
Motor fuel.....	3.048	186.763	180.452	172.378	-7.7	-4.5	0.8	-4.8	-4.8
Gasoline (all types).....	3.000	185.142	179.496	171.574	-7.3	-4.4	0.8	-4.8	-4.8
Energy services ²	3.588	201.594	190.918	192.148	-4.7	0.6	-0.2	-0.7	-0.7
Electricity ²	2.833	208.172	201.787	203.169	-2.4	0.7	0.2	-0.4	-0.7
Utility (piped) gas service ²	0.755	179.184	155.746	156.513	-12.7	0.5	-1.7	-1.9	-0.6
All items less food and energy.....	79.169	239.248	243.779	244.528	2.2	0.3	0.2	0.2	0.3
Commodities less food and energy commodities.....	19.613	144.865	144.522	144.725	-0.1	0.1	-0.1	-0.1	0.2
Apparel.....	3.101	122.527	122.792	121.878	-0.5	-0.7	-0.1	-0.2	0.6
New vehicles.....	3.742	146.558	146.817	147.456	0.6	0.4	0.0	0.0	0.3
Used cars and trucks.....	2.101	141.461	142.474	142.668	0.9	0.1	0.1	0.2	0.1
Medical care commodities.....	1.806	349.980	355.030	357.414	2.1	0.7	0.2	0.1	0.4
Alcoholic beverages.....	0.958	238.718	240.128	241.535	1.2	0.6	-0.1	-0.1	0.5
Tobacco and smoking products.....	0.655	917.733	949.439	952.536	3.8	0.3	0.5	0.3	0.2
Services less energy services.....	59.556	296.979	304.699	305.803	3.0	0.4	0.3	0.2	0.3
Shelter.....	33.150	274.589	282.394	283.498	3.2	0.4	0.2	0.2	0.3
Rent of primary residence ²	7.733	281.572	291.204	292.004	3.7	0.3	0.3	0.2	0.3
Owners' equivalent rent of residences ^{2, 3}	24.227	281.980	290.133	290.884	3.2	0.3	0.2	0.2	0.2
Medical care services.....	6.569	470.030	481.983	485.321	3.3	0.7	0.3	0.1	0.5
Physicians' services ²	1.681	362.740	370.324	370.911	2.3	0.2	1.0	-0.2	0.1
Hospital services ^{2, 4}	2.190	284.225	294.377	297.252	4.6	1.0	-0.2	0.1	0.4
Transportation services.....	5.876	286.644	294.081	294.420	2.7	0.1	0.5	0.3	0.4
Motor vehicle maintenance and repair ¹	1.167	268.869	272.967	273.097	1.6	0.0	0.1	0.3	0.0
Motor vehicle insurance.....	2.379	451.007	474.392	475.456	5.4	0.2	1.0	0.5	0.4
Airline fare.....	0.669	283.152	278.658	278.334	-1.7	-0.1	0.2	-0.1	1.2

¹ Not seasonally adjusted.

² This index series was calculated using a Laspeyres estimator. All other item stratum index series were calculated using a geometric means estimator.

³ Indexes on a December 1982=100 base.

⁴ Indexes on a December 1996=100 base.

NOTE: Index applies to a month as a whole, not to any specific date.

Table 2. Consumer Price Index for All Urban Consumers (CPI-U): U.S. city average, by detailed expenditure category, January 2016

[1982-84=100, unless otherwise noted]

Expenditure category	Relative importance Dec. 2015	Unadjusted percent change		Seasonally adjusted percent change		
		Jan. 2015- Jan. 2016	Dec. 2015- Jan. 2016	Oct. 2015- Nov. 2015	Nov. 2015- Dec. 2015	Dec. 2015- Jan. 2016
All items.....	100.000	1.4	0.2	0.1	-0.1	0.0
Food.....	14.015	0.8	0.3	-0.1	-0.2	0.0
Food at home.....	8.230	-0.5	0.3	-0.3	-0.4	-0.2
Cereals and bakery products.....	1.098	0.4	0.5	-0.4	-0.1	-0.2
Cereals and cereal products.....	0.371	-1.0	-0.1	-0.8	0.2	-1.0
Flour and prepared flour mixes.....	0.043	-2.8	5.4	-0.5	-0.4	0.6
Breakfast cereal ¹	0.192	-1.5	-2.2	-1.0	0.7	-2.2
Rice, pasta, cornmeal ¹	0.135	0.4	1.1	-0.8	-0.7	1.1
Rice ^{1, 2, 3}		-1.9	0.5	0.1	-1.6	0.5
Bakery products ¹	0.727	1.0	0.8	-0.5	-0.4	0.8
Bread ^{1, 2}	0.218	1.0	0.0	0.4	-0.2	0.0
White bread ^{1, 3}		0.9	0.1	-0.2	0.7	0.1
Bread other than white ^{1, 3}		1.2	-0.1	0.9	-1.1	-0.1
Fresh biscuits, rolls, muffins ²	0.108	1.1	0.6	0.3	-0.4	0.3
Cakes, cupcakes, and cookies.....	0.176	2.3	0.8	-0.8	0.6	1.1
Cookies ³		0.3	0.6	-1.9	0.9	0.9
Fresh cakes and cupcakes ^{1, 3}		4.7	0.7	0.2	-0.2	0.7
Other bakery products.....	0.225	0.0	1.6	0.2	-0.6	-0.2
Fresh sweetrolls, coffeecakes, doughnuts ^{1, 3}		-0.2	1.1	0.8	-3.0	1.1
Crackers, bread, and cracker products ³		0.4	1.3	0.3	0.2	-0.7
Frozen and refrigerated bakery products, pies, tarts, turnovers ³		-0.7	1.5	-0.1	-0.1	-0.5
Meats, poultry, fish, and eggs.....	1.876	-3.5	-1.4	-0.6	-1.1	-1.3
Meats, poultry, and fish.....	1.723	-4.2	-0.6	-0.4	-1.0	-0.7
Meats.....	1.105	-4.9	-1.1	-0.6	-1.1	-0.8
Beef and veal.....	0.498	-5.7	-1.4	-1.2	-1.8	-0.8
Uncooked ground beef ¹	0.208	-8.4	-2.0	-1.2	-1.9	-2.0
Uncooked beef roasts ^{1, 2}	0.066	-7.2	-1.2	-1.3	-3.6	-1.2
Uncooked beef steaks ²	0.175	-2.4	-0.9	-0.5	-2.1	-0.4
Uncooked other beef and veal ^{1, 2}	0.049	-4.1	-0.8	-0.8	-0.5	-0.8
Pork.....	0.339	-7.5	-0.5	-0.5	-1.0	-0.7
Bacon, breakfast sausage, and related products ²	0.141	-3.8	1.1	1.1	-1.5	-0.3
Bacon and related products ³		-0.8	-0.1	1.4	-1.0	-0.8
Breakfast sausage and related products ^{2, 3}		-7.2	3.3	-0.7	-1.1	1.6
Ham.....	0.061	-10.1	-0.1	-1.6	0.0	-0.1
Ham, excluding canned ³		-11.4	-0.4	-1.8	0.3	-0.6
Pork chops ¹	0.057	-8.8	-3.7	-1.9	0.8	-3.7
Other pork including roasts and picnics ²	0.080	-10.4	-1.5	-1.0	-1.8	-1.2
Other meats.....	0.268	0.5	-1.1	0.3	0.1	-0.8
Frankfurters ³		1.3	-3.6	-0.2	0.7	-2.9
Lunchmeats ^{2, 3}		1.0	-0.7	0.7	0.1	-0.3
Lamb and organ meats ^{1, 3}		-0.5	0.1	-1.4	-1.4	0.1
Lamb and mutton ^{1, 2, 3}		-2.1	0.4	-1.3	-3.8	0.4
Poultry.....	0.354	-3.2	-0.3	0.3	-0.9	-0.8
Chicken ^{1, 2}	0.287	-4.2	-0.7	0.3	-1.7	-0.7
Fresh whole chicken ^{1, 3}		-5.7	-0.3	1.4	-1.6	-0.3
Fresh and frozen chicken parts ^{1, 3}		-3.4	-0.7	0.0	-1.7	-0.7
Other poultry including turkey ²	0.066	1.4	1.4	0.2	0.0	-0.7
Fish and seafood.....	0.264	-2.7	0.9	0.0	-0.4	0.1
Fresh fish and seafood ²	0.141	-2.3	2.1	-0.1	-0.3	0.9
Processed fish and seafood ²	0.124	-3.2	-0.4	0.4	-0.6	-0.6
Shelf stable fish and seafood ^{1, 3}		0.8	-0.7	0.0	0.4	-0.7

See footnotes at end of table.

Table 2. Consumer Price Index for All Urban Consumers (CPI-U): U.S. city average, by detailed expenditure category, January 2016 — Continued
 [1982-84=100, unless otherwise noted]

Expenditure category	Relative importance Dec. 2015	Unadjusted percent change		Seasonally adjusted percent change		
		Jan. 2015- Jan. 2016	Dec. 2015- Jan. 2016	Oct. 2015- Nov. 2015	Nov. 2015- Dec. 2015	Dec. 2015- Jan. 2016
Frozen fish and seafood ³		-6.5	0.3	0.5	-1.5	-0.2
Eggs.....	0.153	6.8	-10.1	-3.2	-3.2	-8.4
Dairy and related products.....	0.846	-3.0	0.0	-0.5	0.0	-0.2
Milk ^{1, 2}	0.244	-7.2	-1.4	-0.6	0.6	-1.4
Fresh whole milk ³		-7.7	-0.1	-1.4	0.0	0.3
Fresh milk other than whole ^{2, 3}		-6.6	-1.9	-0.8	0.1	-1.5
Cheese and related products.....	0.272	-2.7	0.5	-0.2	-0.6	0.4
Ice cream and related products.....	0.120	0.2	0.9	-0.2	0.2	-0.5
Other dairy and related products ^{1, 2}	0.211	0.1	0.6	-0.9	0.1	0.6
Fruits and vegetables.....	1.399	2.7	2.6	0.5	-0.2	1.3
Fresh fruits and vegetables.....	1.102	3.3	2.6	0.4	-0.1	1.6
Fresh fruits.....	0.587	2.7	0.8	0.1	-0.8	1.1
Apples.....	0.086	5.6	2.5	2.3	2.7	0.3
Bananas ¹	0.090	0.4	-0.5	0.1	0.6	-0.5
Citrus fruits ²	0.145	0.9	-2.2	1.1	-0.3	-1.0
Oranges, including tangerines ³		0.1	-2.6	0.1	0.1	-1.5
Other fresh fruits ²	0.266	3.5	2.2	0.4	-1.5	2.9
Fresh vegetables.....	0.515	3.9	4.8	0.8	0.8	2.2
Potatoes.....	0.075	-0.6	6.2	-1.4	0.4	0.4
Lettuce.....	0.076	-0.9	-3.9	0.9	3.0	-5.1
Tomatoes ¹	0.090	8.1	15.3	4.7	0.6	15.3
Other fresh vegetables.....	0.274	5.3	3.4	1.4	1.0	0.9
Processed fruits and vegetables ²	0.297	0.5	2.4	1.0	-0.7	0.4
Canned fruits and vegetables ²	0.155	0.7	3.0	0.9	-0.5	1.1
Canned fruits ^{2, 3}		2.7	3.0	0.7	-1.2	1.1
Canned vegetables ^{2, 3}		-0.5	3.0	0.9	-0.1	1.2
Frozen fruits and vegetables ²	0.087	0.0	1.7	0.2	-0.6	-0.2
Frozen vegetables ³		-0.4	2.7	0.2	-0.6	0.3
Other processed fruits and vegetables including dried ²	0.056	0.3	1.7	0.8	-0.7	-0.1
Dried beans, peas, and lentils ^{1, 2, 3}		0.4	-0.7	0.0	-0.3	-0.7
Nonalcoholic beverages and beverage materials.....	0.977	0.1	0.7	-0.3	-0.1	-0.2
Juices and nonalcoholic drinks ²	0.687	0.6	0.6	-0.3	-0.2	-0.4
Carbonated drinks.....	0.270	0.9	2.0	-0.2	0.2	-0.4
Frozen noncarbonated juices and drinks ^{1, 2}	0.011	-1.6	-1.7	-0.8	0.3	-1.7
Nonfrozen noncarbonated juices and drinks ²	0.405	0.6	-0.2	-0.8	-0.3	-0.4
Beverage materials including coffee and tea ²	0.290	-1.5	1.0	-0.5	0.4	-0.2
Coffee.....	0.182	-2.9	1.7	-0.9	0.3	-0.2
Roasted coffee ³		-2.2	2.0	-0.5	0.6	-0.5
Instant and freeze dried coffee ^{1, 3}		-5.5	-0.9	-0.1	0.8	-0.9
Other beverage materials including tea ²	0.109	0.8	0.0	0.4	0.6	-0.1
Other food at home.....	2.033	0.8	-0.1	-0.3	-0.2	-0.2
Sugar and sweets ¹	0.297	0.6	-0.1	-0.5	-0.1	-0.1
Sugar and artificial sweeteners.....	0.050	1.3	2.9	-0.7	-0.2	-0.7
Candy and chewing gum ^{1, 2}	0.190	0.8	-1.1	0.1	-0.4	-1.1
Other sweets ²	0.056	-0.5	0.8	0.8	0.5	-1.2
Fats and oils.....	0.240	-0.8	0.6	-0.8	0.6	-0.6
Butter and margarine ²	0.070	0.7	1.0	-2.1	0.9	-0.5
Butter ³		-0.6	0.7	-3.3	1.6	-0.7
Margarine ³		2.3	0.6	0.0	1.2	-0.8
Salad dressing ²	0.059	-0.2	-1.1	-0.5	0.4	-1.1
Other fats and oils including peanut butter ²	0.111	-2.2	1.4	-0.1	0.0	0.0
Peanut butter ^{1, 2, 3}		-2.6	-0.2	-2.8	1.7	-0.2
Other foods.....	1.496	1.1	-0.2	-0.1	-0.3	-0.2

See footnotes at end of table.

Table 2. Consumer Price Index for All Urban Consumers (CPI-U): U.S. city average, by detailed expenditure category, January 2016 — Continued
 [1982-84=100, unless otherwise noted]

Expenditure category	Relative importance Dec. 2015	Unadjusted percent change		Seasonally adjusted percent change		
		Jan. 2015- Jan. 2016	Dec. 2015- Jan. 2016	Oct. 2015- Nov. 2015	Nov. 2015- Dec. 2015	Dec. 2015- Jan. 2016
Soups.....	0.090	1.4	0.5	-0.7	-0.3	-0.3
Frozen and freeze dried prepared foods ¹	0.269	-0.3	-1.4	-0.4	-0.4	-1.4
Snacks ¹	0.340	2.8	0.1	0.1	0.0	0.1
Spices, seasonings, condiments, sauces.....	0.284	2.3	3.0	0.4	-1.1	0.2
Salt and other seasonings and spices ^{2, 3}		5.2	4.5	-0.4	-1.4	1.7
Olives, pickles, relishes ^{1, 2, 3}		4.0	1.6	-2.0	-1.1	1.6
Sauces and gravies ^{2, 3}		1.5	2.2	0.4	-0.4	1.0
Other condiments ³		3.1	3.9	-0.4	0.5	0.1
Baby food ^{1, 2}	0.056	0.0	0.3	-0.4	0.8	0.3
Other miscellaneous foods ^{1, 2}	0.458	0.0	-1.8	0.2	0.3	-1.8
Prepared salads ^{1, 3, 4}		3.1	-1.5	0.9	0.0	-1.5
Food away from home ¹	5.785	2.7	0.3	0.2	0.1	0.3
Full service meals and snacks ^{1, 2}	2.804	2.4	0.2	0.2	0.1	0.2
Limited service meals and snacks ^{1, 2}	2.452	2.7	0.5	0.2	0.1	0.5
Food at employee sites and schools ²	0.198	5.2	0.2	-0.1	0.2	0.4
Food at elementary and secondary schools ^{1, 3, 5}		4.7	0.2	-0.2	0.0	0.2
Food from vending machines and mobile vendors ^{1, 2}	0.081	1.6	0.3	0.1	0.5	0.3
Other food away from home ^{1, 2}	0.250	4.2	0.1	0.4	0.3	0.1
Energy.....	6.816	-6.5	-1.7	0.3	-2.8	-2.8
Energy commodities.....	3.228	-8.5	-4.4	0.7	-4.8	-4.8
Fuel oil and other fuels.....	0.180	-20.1	-3.3	-0.2	-4.6	-5.7
Fuel oil ¹	0.093	-28.7	-6.5	-1.3	-7.8	-6.5
Propane, kerosene, and firewood ⁶	0.087	-8.8	0.1	-1.0	-0.5	-0.9
Motor fuel.....	3.048	-7.7	-4.5	0.8	-4.8	-4.8
Gasoline (all types).....	3.000	-7.3	-4.4	0.8	-4.8	-4.8
Gasoline, unleaded regular ³		-8.2	-4.7	0.8	-5.0	-5.0
Gasoline, unleaded midgrade ^{3, 7}		-4.8	-4.0	0.2	-4.7	-4.6
Gasoline, unleaded premium ³		-2.5	-2.9	1.1	-3.3	-3.3
Other motor fuels ²	0.048	-26.3	-8.3	-1.4	-2.2	-5.4
Energy services ⁸	3.588	-4.7	0.6	-0.2	-0.7	-0.7
Electricity ⁸	2.833	-2.4	0.7	0.2	-0.4	-0.7
Utility (piped) gas service ⁸	0.755	-12.7	0.5	-1.7	-1.9	-0.6
All items less food and energy.....	79.169	2.2	0.3	0.2	0.2	0.3
Commodities less food and energy commodities.....	19.613	-0.1	0.1	-0.1	-0.1	0.2
Household furnishings and supplies ⁹	3.310	-0.8	0.3	-0.2	0.1	-0.1
Window and floor coverings and other linens ^{1, 2}	0.272	-1.0	0.5	0.3	1.3	0.5
Floor coverings ^{1, 2}	0.059	0.5	0.3	-0.1	0.5	0.3
Window coverings ^{1, 2}	0.055	0.4	2.9	0.9	3.4	2.9
Other linens ^{1, 2}	0.158	-1.9	-0.2	0.2	0.8	-0.2
Furniture and bedding ¹	0.794	-0.3	0.0	0.0	0.1	0.0
Bedroom furniture ¹	0.280	1.2	-0.6	0.6	0.6	-0.6
Living room, kitchen, and dining room furniture ^{1, 2}	0.369	-1.0	1.4	-0.5	-0.5	1.4
Other furniture ²	0.139	-1.0	-2.1	-0.1	0.3	-2.2
Infants' furniture ^{1, 3, 5}						
Appliances ²	0.189	-2.9	1.8	-0.8	0.1	0.2
Major appliances ²	0.060	-4.0	1.6	-0.8	0.1	-0.5
Laundry equipment ³		-4.0	1.2	-1.5	-0.2	-0.5
Other appliances ^{1, 2}	0.126	-1.8	1.8	-0.8	-0.9	1.8
Other household equipment and furnishings ²	0.480	-2.1	1.0	-1.4	-0.1	0.1
Clocks, lamps, and decorator items ¹	0.251	-4.6	0.6	-3.2	0.1	0.6
Indoor plants and flowers ¹⁰	0.105	1.6	-0.1	0.1	-1.0	0.2
Dishes and flatware ^{1, 2}	0.054	3.8	3.9	-2.7	-2.1	3.9
Nonelectric cookware and tableware ²	0.071	-2.8	1.4	-0.9	-1.0	1.2

See footnotes at end of table.

Table 2. Consumer Price Index for All Urban Consumers (CPI-U): U.S. city average, by detailed expenditure category, January 2016 — Continued
 [1982-84=100, unless otherwise noted]

Expenditure category	Relative importance Dec. 2015	Unadjusted percent change		Seasonally adjusted percent change		
		Jan. 2015- Jan. 2016	Dec. 2015- Jan. 2016	Oct. 2015- Nov. 2015	Nov. 2015- Dec. 2015	Dec. 2015- Jan. 2016
Tools, hardware, outdoor equipment and supplies ² . . .	0.692	-0.7	0.1	-0.2	-0.3	-0.4
Tools, hardware and supplies ^{1, 2}	0.183	-2.3	0.2	-1.0	-0.5	0.2
Outdoor equipment and supplies ²	0.345	0.1	0.1	-0.3	-0.1	-0.5
Housekeeping supplies ¹	0.885	0.2	-0.2	0.3	0.1	-0.2
Household cleaning products ²	0.349	0.7	-0.2	-0.1	0.3	-0.1
Household paper products ^{1, 2}	0.239	1.1	0.1	0.5	-0.1	0.1
Miscellaneous household products ^{1, 2}	0.296	-1.2	-0.5	0.4	-0.4	-0.5
Apparel	3.101	-0.5	-0.7	-0.1	-0.2	0.6
Men's and boys' apparel	0.789	0.7	-0.2	0.2	0.2	-0.2
Men's apparel	0.629	0.5	-0.5	0.0	0.5	-0.8
Men's suits, sport coats, and outerwear	0.094	-1.9	3.3	-3.1	-0.5	1.4
Men's furnishings	0.207	1.6	-2.7	2.4	2.7	-3.3
Men's shirts and sweaters ²	0.176	-0.7	-3.3	-1.1	0.1	-2.9
Men's pants and shorts	0.145	2.6	3.8	0.6	2.0	0.2
Boys' apparel	0.160	1.3	0.7	2.0	-1.9	1.4
Women's and girls' apparel	1.250	-2.1	-2.1	-0.4	-0.3	0.6
Women's apparel	1.041	-2.1	-2.5	-0.5	-0.3	0.0
Women's outerwear	0.072	-1.1	0.8	-3.5	-2.0	7.2
Women's dresses	0.143	-6.4	-4.4	-0.7	-2.1	1.5
Women's suits and separates ²	0.471	-2.0	-3.4	-0.4	-0.4	-1.2
Women's underwear, nightwear, sportswear and accessories ²	0.346	-0.7	-1.2	-0.9	1.1	-1.6
Girls' apparel	0.208	-2.3	0.1	0.4	-0.3	3.7
Footwear	0.696	0.3	-0.5	0.0	-0.1	1.0
Men's footwear ¹	0.213	-0.5	1.2	0.4	-2.0	1.2
Boys' and girls' footwear	0.170	0.0	-0.8	-0.8	-0.9	1.4
Women's footwear	0.313	0.9	-1.5	-0.3	0.6	0.2
Infants' and toddlers' apparel	0.157	-0.4	-1.7	1.0	-4.0	-0.2
Jewelry and watches ⁶	0.209	1.8	5.2	-0.9	0.5	3.2
Watches ^{1, 6}	0.077	0.8	2.6	-1.3	-1.6	2.6
Jewelry ⁶	0.133	2.9	6.7	-1.3	1.4	4.1
Transportation commodities less motor fuel ⁹	6.335	0.6	0.3	0.1	0.0	0.4
New vehicles	3.742	0.6	0.4	0.0	0.0	0.3
New cars and trucks ^{2, 3}		0.6	0.4	0.0	0.0	0.3
New cars ³		0.0	0.4	-0.2	0.1	0.3
New trucks ^{3, 11}		1.1	0.4	0.2	-0.1	0.3
Used cars and trucks	2.101	0.9	0.1	0.1	0.2	0.1
Motor vehicle parts and equipment ¹	0.396	-0.1	0.4	0.5	0.2	0.4
Tires ¹	0.238	-0.4	0.5	0.4	0.2	0.5
Vehicle accessories other than tires ^{1, 2}	0.158	0.6	0.2	0.7	0.1	0.2
Vehicle parts and equipment other than tires ^{1, 3}		1.1	0.1	0.8	0.0	0.1
Motor oil, coolant, and fluids ^{1, 3}		-0.1	0.2	0.9	1.1	0.2
Medical care commodities	1.806	2.1	0.7	0.2	0.1	0.4
Medicinal drugs ^{1, 9}	1.746	2.2	0.7	0.1	-0.4	0.7
Prescription drugs	1.377	3.0	1.0	0.3	-0.1	0.5
Nonprescription drugs ^{1, 9}	0.368	-0.7	-0.4	-0.2	-0.6	-0.4
Medical equipment and supplies ^{1, 9}	0.061	0.0	0.3	-0.3	-0.4	0.3
Recreation commodities ⁹	1.888	-2.4	0.3	-0.5	-0.4	0.0
Video and audio products ⁹	0.252	-7.8	-0.3	-0.7	-1.6	-1.2
Televisions	0.132	-14.3	-0.7	-0.9	-3.0	-2.2
Other video equipment ²	0.026	-5.9	0.0	-1.0	-0.7	-0.8
Audio equipment	0.064	-2.7	-0.3	0.2	-0.8	-1.1
Audio discs, tapes and other media ^{1, 2}	0.024	0.8	1.2	-1.6	-0.1	1.2

See footnotes at end of table.

Table 2. Consumer Price Index for All Urban Consumers (CPI-U): U.S. city average, by detailed expenditure category, January 2016 — Continued
 [1982-84=100, unless otherwise noted]

Expenditure category	Relative importance Dec. 2015	Unadjusted percent change		Seasonally adjusted percent change		
		Jan. 2015- Jan. 2016	Dec. 2015- Jan. 2016	Oct. 2015- Nov. 2015	Nov. 2015- Dec. 2015	Dec. 2015- Jan. 2016
Pets and pet products ¹	0.594	-0.5	0.5	-0.8	0.1	0.5
Pet food ^{1, 2, 3}		-0.2	0.2	0.0	0.2	0.2
Purchase of pets, pet supplies, accessories ^{1, 2, 3}		-0.9	0.9	-1.7	0.2	0.9
Sporting goods ¹	0.446	-1.0	0.0	-0.4	-0.4	0.0
Sports vehicles including bicycles ¹	0.231	-1.4	0.2	-0.4	-0.9	0.2
Sports equipment.....	0.206	-0.8	-0.2	0.0	0.5	0.0
Photographic equipment and supplies.....	0.038	-5.2	-0.2	-0.4	0.1	-0.1
Film and photographic supplies ^{1, 2, 3}				0.0	-0.1	
Photographic equipment ^{2, 3}		-5.5	-0.3	-0.3	-0.2	0.0
Recreational reading materials ¹	0.155	1.1	-0.7	0.2	0.2	-0.7
Newspapers and magazines ^{1, 2}	0.087	0.6	-0.3	-0.4	-0.6	-0.3
Recreational books ^{1, 2}	0.067	1.8	-1.1	1.0	1.3	-1.1
Other recreational goods ²	0.403	-4.8	1.1	-0.5	-1.1	0.0
Toys.....	0.328	-7.1	1.3	-0.5	-1.4	-0.3
Toys, games, hobbies and playground equipment ^{1, 3}		-5.2	1.1	-0.3	-0.5	-0.3
Sewing machines, fabric and supplies ^{1, 2}	0.026	1.6	-1.6	-0.5	0.4	-1.6
Music instruments and accessories ^{1, 2}	0.033	1.6	1.3	-0.5	-1.0	1.3
Education and communication commodities ⁹	0.650	-4.0	-0.8	-0.4	-0.4	-1.3
Educational books and supplies.....	0.160	3.6	-0.1	0.5	0.6	-0.4
College textbooks ^{1, 3, 12}		4.5	0.1	0.3	0.6	0.1
Information technology commodities ⁹	0.490	-7.6	-1.1	-0.9	-0.9	-1.7
Personal computers and peripheral equipment ⁴	0.296	-7.1	-1.2	-0.6	-0.6	-2.2
Computer software and accessories ^{1, 2}	0.096	-1.3	-0.7	-1.2	-0.8	-0.7
Telephone hardware, calculators, and other consumer information items ^{1, 2}	0.098	-15.9	-0.8	-1.9	-2.4	-0.8
Alcoholic beverages.....	0.958	1.2	0.6	-0.1	-0.1	0.5
Alcoholic beverages at home.....	0.592	0.9	0.9	-0.2	-0.3	0.6
Beer, ale, and other malt beverages at home.....	0.271	1.9	0.6	-0.4	0.0	0.5
Distilled spirits at home.....	0.074	-0.5	0.4	0.1	0.1	-0.2
Whiskey at home ^{1, 3}		-0.5	0.2	0.5	0.1	0.2
Distilled spirits, excluding whiskey, at home ³		-0.5	0.4	-0.1	0.2	-0.1
Wine at home.....	0.247	0.2	1.3	-0.1	-0.3	0.8
Alcoholic beverages away from home ¹	0.366	1.6	0.1	0.1	0.2	0.1
Beer, ale, and other malt beverages away from home ^{1, 2, 3}		1.8	0.2	0.0	0.3	0.2
Wine away from home ^{1, 2, 3}		0.8	0.0	-0.1	0.1	0.0
Distilled spirits away from home ^{1, 2, 3}		3.5	0.1	0.4	-0.2	0.1
Other goods ⁹	1.563	0.7	0.2	0.0	0.0	0.2
Tobacco and smoking products.....	0.655	3.8	0.3	0.5	0.3	0.2
Cigarettes ²	0.593	3.8	0.3	0.5	0.3	0.1
Tobacco products other than cigarettes ^{1, 2}	0.045	3.9	1.1	0.2	0.0	1.1
Personal care products ¹	0.717	-0.9	0.2	-0.2	-0.1	0.2
Hair, dental, shaving, and miscellaneous personal care products ^{1, 2}	0.381	-1.0	0.1	-0.2	-0.2	0.1
Cosmetics, perfume, bath, nail preparations and implements ¹	0.330	-0.8	0.2	-0.2	0.1	0.2
Miscellaneous personal goods ²	0.191	-4.5	-0.2	-1.2	-0.8	0.0
Stationery, stationery supplies, gift wrap ³		-2.2	-0.5	-0.4	-0.2	0.1
Infants' equipment ^{1, 3, 5}		-1.6	0.1	-0.4	-1.5	0.1
Services less energy services.....	59.556	3.0	0.4	0.3	0.2	0.3
Shelter.....	33.150	3.2	0.4	0.2	0.2	0.3
Rent of shelter ¹³	32.801	3.3	0.4	0.2	0.3	0.3
Rent of primary residence ⁸	7.733	3.7	0.3	0.3	0.2	0.3

See footnotes at end of table.

Table 2. Consumer Price Index for All Urban Consumers (CPI-U): U.S. city average, by detailed expenditure category, January 2016 — Continued
 [1982-84=100, unless otherwise noted]

Expenditure category	Relative importance Dec. 2015	Unadjusted percent change		Seasonally adjusted percent change		
		Jan. 2015-Jan. 2016	Dec. 2015-Jan. 2016	Oct. 2015-Nov. 2015	Nov. 2015-Dec. 2015	Dec. 2015-Jan. 2016
Lodging away from home ²	0.841	2.7	5.4	0.6	-0.2	2.0
Housing at school, excluding board ^{8, 13}	0.120	2.9	0.1	0.2	0.3	0.2
Other lodging away from home including hotels and motels.....	0.721	2.1	6.3	0.6	-0.3	1.4
Owners' equivalent rent of residences ^{8, 13}	24.227	3.2	0.3	0.2	0.2	0.2
Owners' equivalent rent of primary residence ^{8, 13}	23.116	3.2	0.3	0.2	0.2	0.2
Tenants' and household insurance ^{1, 2}	0.350	1.4	0.1	0.3	0.5	0.1
Water and sewer and trash collection services ²	1.157	3.9	0.5	0.3	0.3	0.2
Water and sewerage maintenance ⁸	0.870	4.4	0.6	0.3	0.3	0.3
Garbage and trash collection ^{1, 11}	0.287	2.2	0.0	0.4	0.1	0.0
Household operations ^{1, 2}	0.849	3.2	0.0	0.2	0.5	0.0
Domestic services ^{1, 2}	0.284	0.9	0.3	0.1	0.1	0.3
Gardening and lawncare services ^{1, 2}				0.1	0.2	
Moving, storage, freight expense ²	0.114	10.6	-0.9	-0.2	3.5	-0.7
Repair of household items ^{1, 2}	0.087	1.9	-0.1	0.8	-0.4	-0.1
Medical care services.....	6.569	3.3	0.7	0.3	0.1	0.5
Professional services.....	3.131	2.1	0.4	0.5	0.0	0.3
Physicians' services ⁸	1.681	2.3	0.2	1.0	-0.2	0.1
Dental services ⁸	0.812	2.7	0.6	0.4	0.1	0.3
Eyeglasses and eye care ^{1, 6}	0.324	1.2	1.0	-0.5	0.4	1.0
Services by other medical professionals ^{8, 6}	0.314	0.5	0.2	-0.1	0.0	0.1
Hospital and related services.....	2.459	4.3	0.9	-0.2	0.2	0.4
Hospital services ^{8, 14}	2.190	4.6	1.0	-0.2	0.1	0.4
Inpatient hospital services ^{8, 14, 3}		4.8	1.1	-0.1	0.0	0.6
Outpatient hospital services ^{8, 3, 6}		3.4	0.7	-0.2	0.1	0.2
Nursing homes and adult day services ^{8, 14}	0.191	3.0	0.8	0.3	0.3	0.1
Care of invalids and elderly at home ^{1, 5}	0.077	2.1	0.5	0.2	0.5	0.5
Health insurance ^{1, 5}	0.979	4.8	1.1	0.7	0.3	1.1
Transportation services.....	5.876	2.7	0.1	0.5	0.3	0.4
Leased cars and trucks ¹²	0.570	0.0	0.0	1.5	1.5	0.3
Car and truck rental ²	0.095	-7.8	2.0	-3.4	-4.3	4.0
Motor vehicle maintenance and repair ¹	1.167	1.6	0.0	0.1	0.3	0.0
Motor vehicle body work ¹	0.057	1.4	0.1	0.1	0.0	0.1
Motor vehicle maintenance and servicing ¹	0.677	1.1	0.1	0.2	0.2	0.1
Motor vehicle repair ^{1, 2}	0.391	1.9	0.0	0.0	0.5	0.0
Motor vehicle insurance.....	2.379	5.4	0.2	1.0	0.5	0.4
Motor vehicle fees ^{1, 2}	0.530	2.8	0.5	0.0	0.0	0.5
State motor vehicle registration and license fees ^{1, 8, 2}	0.285	3.1	0.3	0.0	0.0	0.3
Parking and other fees ²	0.234	2.3	0.8	0.2	0.1	0.3
Parking fees and tolls ^{1, 2, 3}		2.8	1.0	0.1	0.2	1.0
Automobile service clubs ^{1, 2, 3}		0.4	0.3	0.1	0.0	0.3
Public transportation.....	1.135	-0.1	-0.3	0.0	0.1	0.7
Airline fare.....	0.669	-1.7	-0.1	0.2	-0.1	1.2
Other intercity transportation.....	0.180	3.2	-1.8	-1.1	0.3	0.1
Intercity bus fare ^{1, 3, 4}						
Intercity train fare ^{1, 3, 4}		-1.0	-3.6	1.0	3.8	-3.6
Ship fare ^{1, 2, 3}		4.9	-0.8	0.3	1.4	-0.8
Intracity transportation ¹	0.282	2.3	0.0	0.1	0.0	0.0
Intracity mass transit ^{1, 3, 9}		2.8	0.0	0.1	0.0	0.0
Recreation services ⁹	3.846	2.3	0.4	0.0	0.3	0.3
Video and audio services ⁹	1.603	1.7	0.3	0.2	0.4	0.0

See footnotes at end of table.

Table 2. Consumer Price Index for All Urban Consumers (CPI-U): U.S. city average, by detailed expenditure category, January 2016 — Continued
 [1982-84=100, unless otherwise noted]

Expenditure category	Relative importance Dec. 2015	Unadjusted percent change		Seasonally adjusted percent change		
		Jan. 2015-Jan. 2016	Dec. 2015-Jan. 2016	Oct. 2015-Nov. 2015	Nov. 2015-Dec. 2015	Dec. 2015-Jan. 2016
Cable and satellite television and radio service ¹¹	1.497	1.7	0.3	0.3	0.2	0.0
Video discs and other media, including rental of video and audio ^{1, 2}	0.107	1.9	-0.1	-1.0	2.3	-0.1
Video discs and other media ^{1, 2, 3}		0.2	-1.8	-1.5	3.3	-1.8
Rental of video or audio discs and other media ^{1, 2, 3}		1.6	0.0	0.0	0.3	0.0
Pet services including veterinary ²	0.368	3.7	0.2	0.3	0.4	0.0
Pet services ^{1, 2, 3}		2.7	-0.1	0.3	0.1	-0.1
Veterinarian services ^{2, 3}		4.1	0.2	0.3	0.4	0.1
Photographers and film processing ^{1, 2}	0.050	1.9	0.3	-0.8	0.3	0.3
Photographer fees ^{1, 2, 3}		1.1	0.0	0.0	0.0	0.0
Film processing ^{1, 2, 3}		1.9	0.2	-1.7	0.2	0.2
Other recreation services ²	1.824	2.5	0.6	-0.3	0.2	0.6
Club dues and fees for participant sports and group exercises ^{1, 2}	0.639	-0.7	0.2	-0.9	-0.3	0.2
Admissions ¹	0.638	5.1	1.2	0.0	0.4	1.2
Admission to movies, theaters, and concerts ^{1, 2, 3}		3.5	-0.8	0.6	1.4	-0.8
Admission to sporting events ^{1, 2, 3}		8.8	5.4	-0.6	-1.7	5.4
Fees for lessons or instructions ^{1, 6}	0.224	3.2	0.1	0.3	0.3	0.1
Education and communication services ⁹	6.495	1.9	0.2	0.3	0.1	0.2
Tuition, other school fees, and childcare.....	3.028	3.3	0.0	0.3	0.3	0.0
College tuition and fees.....	1.803	3.1	-0.2	0.3	0.3	-0.1
Elementary and high school tuition and fees.....	0.311	3.8	0.0	0.4	0.3	0.3
Child care and nursery school ¹⁰	0.741	3.7	0.3	0.2	0.1	0.0
Technical and business school tuition and fees ²	0.042	1.5	0.4	0.1	0.2	0.5
Postage and delivery services ²	0.138	0.3	0.6	0.1	0.1	0.4
Postage ¹	0.131	0.6	0.6	0.0	0.0	0.6
Delivery services ²	0.007	-2.1	0.5	1.4	0.6	-2.6
Telephone services ^{1, 2}	2.588	0.9	0.1	0.4	0.0	0.1
Wireless telephone services ^{1, 2}	1.852	0.4	-0.1	0.7	0.0	-0.1
Land-line telephone services ^{1, 9}	0.736	2.0	0.7	-0.1	0.0	0.7
Internet services and electronic information providers ²	0.728	-0.9	0.9	0.2	0.1	0.8
Other personal services ^{1, 9}	1.613	2.4	0.2	0.2	-0.1	0.2
Personal care services ¹	0.610	2.7	0.2	0.4	-0.2	0.2
Haircuts and other personal care services ^{1, 2}	0.610	2.7	0.2	0.4	-0.2	0.2
Miscellaneous personal services.....	1.003	2.2	0.1	0.2	0.1	0.1
Legal services ^{1, 6}	0.241	2.3	-0.4	0.3	-0.1	-0.4
Funeral expenses ^{1, 6}	0.145	2.3	0.2	0.0	-0.5	0.2
Laundry and dry cleaning services ^{1, 2}	0.266	3.0	0.2	0.2	0.2	0.2
Apparel services other than laundry and dry cleaning ^{1, 2}	0.027	1.9	0.1	-0.3	0.1	0.1
Financial services ^{1, 6}	0.227	1.0	0.6	-0.1	-0.3	0.6
Checking account and other bank services ^{1, 2, 3}		0.5	0.1	-0.6	0.1	0.1
Tax return preparation and other accounting fees ^{1, 2, 3}		1.3	0.9	0.0	-0.3	0.9

¹ Not seasonally adjusted.

² Indexes on a December 1997=100 base.

³ Special index based on a substantially smaller sample.

⁴ Indexes on a December 2007=100 base.

⁵ Indexes on a December 2005=100 base.

⁶ Indexes on a December 1986=100 base.

⁷ Indexes on a December 1993=100 base.

⁸ This index series was calculated using a Laspeyres estimator. All other item stratum index series were calculated using a geometric means estimator.

⁹ Indexes on a December 2009=100 base.

¹⁰ Indexes on a December 1990=100 base.

¹¹ Indexes on a December 1983=100 base.

¹² Indexes on a December 2001=100 base.

¹³ Indexes on a December 1982=100 base.

¹⁴ Indexes on a December 1996=100 base.

NOTE: Index applies to a month as a whole, not to any specific date.

Table 3. Consumer Price Index for All Urban Consumers (CPI-U): U.S. city average, special aggregate indexes, January 2016

[1982-84=100, unless otherwise noted]

Special aggregate indexes	Relative importance Dec. 2015	Unadjusted indexes			Unadjusted percent change		Seasonally adjusted percent change		
		Jan. 2015	Dec. 2015	Jan. 2016	Jan. 2015- Jan. 2016	Dec. 2015- Jan. 2016	Oct. 2015- Nov. 2015	Nov. 2015- Dec. 2015	Dec. 2015- Jan. 2016
All items less food.....	85.985	231.711	234.758	235.097	1.5	0.1	0.2	-0.1	0.0
All items less shelter.....	66.850	220.322	221.203	221.321	0.5	0.1	0.1	-0.3	-0.1
All items less food and shelter.....	52.834	213.576	214.341	214.319	0.3	0.0	0.1	-0.3	-0.1
All items less food, shelter, and energy.....	46.018	219.704	222.345	222.895	1.5	0.2	0.1	0.1	0.3
All items less food, shelter, energy, and used cars and trucks.....	43.918	224.394	227.132	227.705	1.5	0.3	0.1	0.1	0.3
All items less medical care.....	91.625	223.721	226.213	226.479	1.2	0.1	0.1	-0.1	0.0
All items less energy.....	93.184	239.670	243.711	244.455	2.0	0.3	0.1	0.1	0.3
Commodities.....	36.856	178.576	178.016	177.661	-0.5	-0.2	0.0	-0.6	-0.4
Commodities less food, energy, and used cars and trucks.....	17.512	145.868	145.398	145.603	-0.2	0.1	-0.1	-0.1	0.2
Commodities less food.....	22.841	148.260	146.994	146.255	-1.4	-0.5	0.0	-0.8	-0.6
Commodities less food and beverages.....	21.883	145.124	143.787	142.996	-1.5	-0.6	0.0	-0.9	-0.6
Services.....	63.144	288.178	294.263	295.377	2.5	0.4	0.2	0.2	0.3
Services less rent of shelter ¹	30.343	313.112	317.175	318.322	1.7	0.4	0.3	0.1	0.1
Services less medical care services.....	56.575	274.345	280.013	280.970	2.4	0.3	0.2	0.2	0.2
Durables.....	9.647	108.474	107.599	107.862	-0.6	0.2	-0.1	-0.1	0.0
Nondurables.....	27.209	213.108	212.773	212.014	-0.5	-0.4	-0.1	-0.4	-0.7
Nondurables less food.....	13.194	184.946	183.309	181.387	-1.9	-1.0	-0.1	-1.0	-1.2
Nondurables less food and beverages.....	12.236	181.619	179.800	177.686	-2.2	-1.2	-0.1	-1.1	-1.4
Nondurables less food, beverages, and apparel.....	9.135	222.554	219.395	216.494	-2.7	-1.3	-0.1	-1.2	-1.7
Nondurables less food and apparel.....	10.093	222.900	220.164	217.651	-2.4	-1.1	0.1	-1.2	-1.6
Housing.....	42.235	235.485	239.514	240.424	2.1	0.4	0.2	0.1	0.1
Education and communication ²	7.145	137.604	139.388	139.481	1.4	0.1	0.3	0.1	0.0
Education ²	3.189	236.820	244.777	244.710	3.3	0.0	0.3	0.3	0.0
Communication ²	3.956	80.667	80.227	80.342	-0.4	0.1	0.2	-0.1	0.0
Information and information processing ²	3.818	76.822	76.393	76.490	-0.4	0.1	0.2	-0.1	0.0
Information technology, hardware and services ³	1.230	8.181	7.896	7.903	-3.4	0.1	-0.2	-0.2	-0.2
Recreation ²	5.734	115.288	115.625	116.062	0.7	0.4	-0.2	0.0	0.2
Video and audio ²	1.856	99.144	99.181	99.373	0.2	0.2	0.1	0.1	-0.2
Pets, pet products and services ²	0.962	166.468	167.652	168.297	1.1	0.4	-0.4	0.2	0.3
Photography ²	0.089	75.631	74.457	74.506	-1.5	0.1	-0.6	0.2	0.0
Food and beverages.....	14.973	246.100	247.468	248.241	0.9	0.3	-0.1	-0.2	0.0
Domestically produced farm food.....	6.898	251.845	250.262	250.724	-0.4	0.2	-0.3	-0.5	-0.2
Other services.....	11.954	336.331	342.517	343.345	2.1	0.2	0.2	0.2	0.2
Apparel less footwear.....	2.405	115.448	115.521	114.575	-0.8	-0.8	-0.1	-0.3	0.5
Fuels and utilities.....	4.925	232.309	223.521	224.537	-3.3	0.5	-0.1	-0.6	-0.6
Household energy.....	3.768	198.143	186.361	187.209	-5.5	0.5	-0.2	-0.9	-0.9
Medical care.....	8.375	440.969	451.072	454.175	3.0	0.7	0.3	0.1	0.5
Transportation.....	15.259	190.871	191.528	190.162	-0.4	-0.7	0.4	-1.0	-0.8
Private transportation.....	14.125	185.461	186.117	184.734	-0.4	-0.7	0.4	-1.1	-1.0
New and used motor vehicles ²	6.604	99.498	99.686	100.009	0.5	0.3	0.1	0.1	0.4
Utilities and public transportation.....	9.965	214.665	212.126	212.822	-0.9	0.3	0.2	-0.3	0.0
Household furnishings and operations.....	4.160	122.351	122.100	122.348	0.0	0.2	-0.1	0.2	-0.1
Other goods and services.....	3.177	412.545	418.298	419.074	1.6	0.2	0.1	0.0	0.1
Personal care.....	2.522	220.071	221.928	222.259	1.0	0.1	0.0	0.0	0.1

¹ Indexes on a December 1982=100 base.

² Indexes on a December 1997=100 base.

³ Indexes on a December 1988=100 base.

NOTE: Index applies to a month as a whole, not to any specific date.

Table 4. Consumer Price Index for All Urban Consumers (CPI-U): Selected areas, all items index, January 2016
 [1982-84=100, unless otherwise noted]

Area	Pricing Schedule ¹	Percent change to Jan. 2016 from:			Percent change to Dec. 2015 from:		
		Jan. 2015	Nov. 2015	Dec. 2015	Dec. 2014	Oct. 2015	Nov. 2015
U.S. city average.....	M	1.4	-0.2	0.2	0.7	-0.6	-0.3
Region and area size²							
Northeast urban.....	M	0.7	-0.3	0.0	0.5	-0.3	-0.4
Size A - More than 1,500,000.....	M	0.8	-0.4	0.0	0.6	-0.4	-0.4
Size B/C - 50,000 to 1,500,000 ³	M	0.5	-0.2	0.0	0.0	-0.3	-0.2
Midwest urban.....	M	0.8	-0.3	0.3	0.0	-1.0	-0.6
Size A - More than 1,500,000.....	M	1.0	-0.2	0.4	0.1	-0.9	-0.6
Size B/C - 50,000 to 1,500,000 ³	M	0.5	-0.5	0.1	-0.3	-1.1	-0.6
Size D - Nonmetropolitan (less than 50,000).....	M	0.9	-0.5	0.2	0.1	-1.3	-0.8
South urban.....	M	1.2	-0.4	0.0	0.5	-0.6	-0.4
Size A - More than 1,500,000.....	M	1.5	-0.2	0.1	0.8	-0.5	-0.3
Size B/C - 50,000 to 1,500,000 ³	M	1.0	-0.5	-0.1	0.3	-0.6	-0.4
Size D - Nonmetropolitan (less than 50,000).....	M	0.6	-0.7	-0.2	0.1	-0.5	-0.5
West urban.....	M	2.6	0.3	0.5	1.8	-0.4	-0.1
Size A - More than 1,500,000.....	M	3.0	0.4	0.5	2.2	-0.3	-0.1
Size B/C - 50,000 to 1,500,000 ³	M	1.3	0.2	0.4	0.5	-0.7	-0.1
Size classes							
A ⁴	M	1.7	-0.1	0.3	1.1	-0.5	-0.3
B/C ³	M	0.9	-0.3	0.0	0.2	-0.7	-0.4
D.....	M	1.6	-0.4	0.1	0.8	-0.6	-0.5
Selected local areas⁵							
Chicago-Gary-Kenosha, IL-IN-WI.....	M	0.9	0.1	0.8	0.0	-1.0	-0.6
Los Angeles-Riverside-Orange County, CA.....	M	3.1	0.6	0.7	2.0	-0.2	-0.1
New York-Northern N.J.-Long Island, NY-NJ-CT-PA. . .	M	0.8	-0.3	0.2	0.7	-0.6	-0.4
Boston-Brockton-Nashua, MA-NH-ME-CT.....	1	1.0	-0.5				
Cleveland-Akron, OH.....	1	0.1	-0.1				
Dallas-Fort Worth, TX.....	1	1.1	0.0				
Washington-Baltimore, DC-MD-VA-WV ⁶	1	1.4	-0.2				
Atlanta, GA.....	2				1.4	-0.6	
Detroit-Ann Arbor-Flint, MI.....	2				-0.1	-1.2	
Houston-Galveston-Brazoria, TX.....	2				0.4	-0.8	
Miami-Fort Lauderdale, FL.....	2				1.6	-0.1	
Philadelphia-Wilmington-Atlantic City, PA-NJ-DE-MD... .	2				-0.2	-0.6	
San Francisco-Oakland-San Jose, CA.....	2				3.2	-0.3	
Seattle-Tacoma-Bremerton, WA.....	2				2.2	-0.2	

¹ Foods, fuels, and several other items are priced every month in all areas. Most other goods and services are priced as indicated: M - Every month. 1 - January, March, May, July, September, and November. 2 - February, April, June, August, October, and December.

² Regions defined as the four Census regions.

³ Indexes on a December 1996=100 base.

⁴ Indexes on a December 1986=100 base.

⁵ In addition, the following metropolitan areas are published semiannually and appear in Tables 34 and 39 of the January and July issues of the CPI Detailed Report: Anchorage, AK; Cincinnati-Hamilton, OH-KY-IN; Denver-Boulder-Greeley, CO; Honolulu, HI; Kansas City, MO-KS; Milwaukee-Racine, WI; Minneapolis-St. Paul, MN-WI; Phoenix-Mesa, AZ; Pittsburgh, PA; Portland-Salem, OR-WA; St. Louis, MO-IL; San Diego, CA; Tampa-St. Petersburg-Clearwater, FL.

⁶ Indexes on a November 1996=100 base.

NOTE: Local area indexes are byproducts of the national CPI program. Each local index has a smaller sample size than the national index and is, therefore, subject to substantially more sampling and other measurement error. As a result, local area indexes show greater volatility than the national index, although their long-term trends are similar. Therefore, the Bureau of Labor Statistics strongly urges users to consider adopting the national average CPI for use in their escalator clauses.

NOTE: Index applies to a month as a whole, not to any specific date.

Table 5. Chained Consumer Price Index for All Urban Consumers (C-CPI-U) and the Consumer Price Index for All Urban Consumers (CPI-U): U.S. city average, all items index, January 2016
 [Percent changes]

Month Year	Unadjusted 1-month percent change		Unadjusted 12-month percent change	
	C-CPI-U ¹	CPI-U	C-CPI-U ¹	CPI-U
December 2000.....			2.6	3.4
December 2001.....			1.3	1.6
December 2002.....			2.0	2.4
December 2003.....			1.7	1.9
December 2004.....			3.2	3.3
December 2005.....			2.9	3.4
December 2006.....			2.3	2.5
December 2007.....			3.7	4.1
December 2008.....			0.2	0.1
December 2009.....			2.5	2.7
December 2010.....			1.3	1.5
December 2011.....			2.9	3.0
December 2012.....			1.5	1.7
December 2013.....			1.3	1.5
January 2014.....	0.4	0.4	1.4	1.6
February 2014.....	0.4	0.4	1.0	1.1
March 2014.....	0.6	0.6	1.4	1.5
April 2014.....	0.3	0.3	1.8	2.0
May 2014.....	0.3	0.3	1.9	2.1
June 2014.....	0.2	0.2	1.9	2.1
July 2014.....	0.0	0.0	1.8	2.0
August 2014.....	-0.2	-0.2	1.5	1.7
September 2014.....	0.1	0.1	1.5	1.7
October 2014.....	-0.2	-0.3	1.5	1.7
November 2014.....	-0.6	-0.5	1.1	1.3
December 2014.....	-0.7	-0.6	0.5	0.8
January 2015.....	-0.5	-0.5	-0.4	-0.1
February 2015.....	0.4	0.4	-0.4	0.0
March 2015.....	0.7	0.6	-0.3	-0.1
April 2015.....	0.2	0.2	-0.4	-0.2
May 2015.....	0.6	0.5	-0.1	0.0
June 2015.....	0.4	0.4	0.1	0.1
July 2015.....	0.0	0.0	0.1	0.2
August 2015.....	-0.2	-0.1	0.0	0.2
September 2015.....	-0.3	-0.2	-0.3	0.0
October 2015.....	-0.1	0.0	-0.1	0.2
November 2015.....	-0.3	-0.2	0.2	0.5
December 2015.....	-0.5	-0.3	0.4	0.7
January 2016.....	0.1	0.2	1.0	1.4

¹ The C-CPI-U is designed to be a closer approximation to a cost-of-living index in that it, in its final form, accounts for any substitution that consumers make across item categories in response to changes in relative prices. Since the expenditure data required for the calculation of the C-CPI-U are available only with a time lag, the C-CPI-U is being issued first in preliminary form using the latest available expenditure data at that time and is subject to two revisions.

Indexes are issued as initial estimates. Indexes are revised each quarter with the publication of January, April, July, and October data as updated expenditure estimates become available. The C-CPI-U indexes are updated quarterly until they become final. January-March indexes are final in January of the following year; April-June indexes are final in April of the following year; July-September indexes are final in July of the following year; October-December indexes are final in October of the following year.

NOTE: Index applies to a month as a whole, not to any specific date.

Table 6. Consumer Price Index for All Urban Consumers (CPI-U): U.S. city average, by expenditure category, January 2016, 1-month analysis table
 [1982-84=100, unless otherwise noted]

Expenditure category	Relative importance Dec. 2015	One Month				
		Seasonally adjusted percent change Dec. 2015-Jan. 2016	Seasonally adjusted effect on All Items Dec. 2015-Jan. 2016 ¹	Standard error, median price change ²	Largest (L) or Smallest (S) seasonally adjusted change since: ³	
					Date	Percent change
All items.....	100.000	0.0		0.04	L-Nov.2015	0.1
Food.....	14.015	0.0	0.002	0.08	L-Oct.2015	0.1
Food at home.....	8.230	-0.2	-0.017	0.12	L-Oct.2015	0.0
Cereals and bakery products.....	1.098	-0.2	-0.003	0.27	S-Nov.2015	-0.4
Cereals and cereal products.....	0.371	-1.0	-0.004	0.44	S-Jul.2011	-1.0
Flour and prepared flour mixes.....	0.043	0.6	0.000	0.64	L-Sep.2015	1.0
Breakfast cereal ⁴	0.192	-2.2	-0.004	0.71	S-Jan.2008	-2.3
Rice, pasta, cornmeal ⁴	0.135	1.1	0.002	0.67	L-Oct.2015	1.4
Rice ^{4, 5, 6}		0.5		0.83	L-Oct.2015	2.2
Bakery products ⁴	0.727	0.8	0.006	0.31	L-Jan.2015	0.8
Bread ^{4, 5}	0.218	0.0	0.000	0.57	L-Nov.2015	0.4
White bread ^{4, 6}		0.1		0.81	S-Nov.2015	-0.2
Bread other than white ^{4, 6}		-0.1		0.88	L-Nov.2015	0.9
Fresh biscuits, rolls, muffins ⁵	0.108	0.3	0.000	0.69	L-Nov.2015	0.3
Cakes, cupcakes, and cookies.....	0.176	1.1	0.002	0.64	L-May 2015	1.5
Cookies ⁶		0.9		0.97	-	-
Fresh cakes and cupcakes ^{4, 6}		0.7		0.86	L-Oct.2015	1.4
Other bakery products.....	0.225	-0.2	0.000	0.66	L-Nov.2015	0.2
Fresh sweetrolls, coffeecakes, doughnuts ^{4, 6}		1.1		0.84	L-Apr.2015	1.1
Crackers, bread, and cracker products ⁶		-0.7		1.25	S-Sep.2015	-0.7
Frozen and refrigerated bakery products, pies, tarts, turnovers ⁶		-0.5		0.88	S-Sep.2015	-0.9
Meats, poultry, fish, and eggs.....	1.876	-1.3	-0.024	0.22	S-Aug.1979	-3.3
Meats, poultry, and fish.....	1.723	-0.7	-0.011	0.24	L-Nov.2015	-0.4
Meats.....	1.105	-0.8	-0.009	0.27	L-Nov.2015	-0.6
Beef and veal.....	0.498	-0.8	-0.004	0.40	L-Sep.2015	-0.5
Uncooked ground beef ⁴	0.208	-2.0	-0.004	0.55	S-Jul.2009	-2.9
Uncooked beef roasts ^{4, 5}	0.066	-1.2	-0.001	0.87	L-Oct.2015	-1.0
Uncooked beef steaks ⁵	0.175	-0.4	-0.001	0.70	L-Sep.2015	-0.4
Uncooked other beef and veal ^{4, 5}	0.049	-0.8	0.000	0.81	S-Nov.2015	-0.8
Pork.....	0.339	-0.7	-0.002	0.47	L-Nov.2015	-0.5
Bacon, breakfast sausage, and related products ⁵	0.141	-0.3	0.000	0.76	L-Nov.2015	1.1
Bacon and related products ⁶		-0.8		0.95	L-Nov.2015	1.4
Breakfast sausage and related products ^{5, 6}		1.6		0.94	L-May 2014	2.7
Ham.....	0.061	-0.1	0.000	0.91	S-Nov.2015	-1.6
Ham, excluding canned ⁶		-0.6		1.16	S-Nov.2015	-1.8
Pork chops ⁴	0.057	-3.7	-0.002	1.17	S-Mar.2010	-4.5
Other pork including roasts and picnics ⁵	0.080	-1.2	-0.001	1.01	L-Nov.2015	-1.0
Other meats.....	0.268	-0.8	-0.002	0.48	S-Apr.2012	-1.2
Frankfurters ⁶		-2.9		1.56	S-Feb.2007	-3.7
Lunchmeats ^{5, 6}		-0.3		0.62	S-Jun.2015	-0.4
Lamb and organ meats ^{4, 6}		0.1		1.72	L-Oct.2015	0.9
Lamb and mutton ^{4, 5, 6}		0.4		2.54	L-Oct.2015	1.3
Poultry.....	0.354	-0.8	-0.003	0.63	L-Nov.2015	0.3
Chicken ^{4, 5}	0.287	-0.7	-0.002	0.76	L-Nov.2015	0.3
Fresh whole chicken ^{4, 6}		-0.3		1.42	L-Nov.2015	1.4
Fresh and frozen chicken parts ^{4, 6}		-0.7		0.72	L-Nov.2015	0.0
Other poultry including turkey ⁵	0.066	-0.7	-0.001	0.78	S-Sep.2015	-1.7
Fish and seafood.....	0.264	0.1	0.000	0.54	L-Aug.2015	0.9
Fresh fish and seafood ⁵	0.141	0.9	0.001	0.87	L-Aug.2015	2.0
Processed fish and seafood ⁵	0.124	-0.6	-0.001	0.53	-	-

See footnotes at end of table.

Table 6. Consumer Price Index for All Urban Consumers (CPI-U): U.S. city average, by expenditure category, January 2016, 1-month analysis table — Continued

[1982-84=100, unless otherwise noted]

Expenditure category	Relative importance Dec. 2015	One Month				
		Seasonally adjusted percent change Dec. 2015-Jan. 2016	Seasonally adjusted effect on All Items Dec. 2015-Jan. 2016 ¹	Standard error, median price change ²	Largest (L) or Smallest (S) seasonally adjusted change since: ³	
					Date	Percent change
Shelf stable fish and seafood ^{4, 6}		-0.7		0.88	S-May 2015	-1.2
Frozen fish and seafood ⁶		-0.2		0.75	L-Nov.2015	0.5
Eggs.....	0.153	-8.4	-0.012	0.62	S-Oct.2010	-9.1
Dairy and related products.....	0.846	-0.2	-0.002	0.26	S-Nov.2015	-0.5
Milk ^{4, 5}	0.244	-1.4	-0.003	0.33	S-Feb.2015	-3.3
Fresh whole milk ⁶		0.3		0.53	L-Jul.2015	0.7
Fresh milk other than whole ^{5, 6}		-1.5		0.45	S-Feb.2015	-1.8
Cheese and related products.....	0.272	0.4	0.001	0.46	L-Jul.2015	0.8
Ice cream and related products.....	0.120	-0.5	-0.001	0.83	S-May 2015	-1.0
Other dairy and related products ^{4, 5}	0.211	0.6	0.001	0.57	L-Oct.2014	1.0
Fruits and vegetables.....	1.399	1.3	0.018	0.37	L-Mar.2011	1.9
Fresh fruits and vegetables.....	1.102	1.6	0.017	0.46	L-Mar.2011	2.2
Fresh fruits.....	0.587	1.1	0.006	0.64	L-Oct.2015	1.2
Apples.....	0.086	0.3	0.000	1.11	S-Aug.2015	-1.9
Bananas ⁴	0.090	-0.5	0.000	0.62	S-Jun.2015	-0.9
Citrus fruits ⁵	0.145	-1.0	-0.001	1.44	S-Feb.2015	-1.0
Oranges, including tangerines ⁶		-1.5		1.41	S-Aug.2014	-3.3
Other fresh fruits ⁵	0.266	2.9	0.007	1.08	L-Aug.2015	4.6
Fresh vegetables.....	0.515	2.2	0.011	0.59	L-Aug.2013	3.1
Potatoes.....	0.075	0.4	0.000	1.14	—	—
Lettuce.....	0.076	-5.1	-0.004	1.44	S-Nov.2013	-5.8
Tomatoes ⁴	0.090	15.3	0.014	1.42	L-Mar.2011	15.3
Other fresh vegetables.....	0.274	0.9	0.002	0.74	S-Oct.2015	-0.5
Processed fruits and vegetables ⁵	0.297	0.4	0.001	0.49	L-Nov.2015	1.0
Canned fruits and vegetables ⁵	0.155	1.1	0.002	0.76	L-Oct.2014	1.8
Canned fruits ^{5, 6}		1.1		0.86	L-Sep.2015	1.3
Canned vegetables ^{5, 6}		1.2		1.02	L-Jul.2015	1.3
Frozen fruits and vegetables ⁵	0.087	-0.2	0.000	0.86	L-Nov.2015	0.2
Frozen vegetables ⁶		0.3		1.07	L-Aug.2015	0.9
Other processed fruits and vegetables including dried ⁵	0.056	-0.1	0.000	0.73	L-Nov.2015	0.8
Dried beans, peas, and lentils ^{4, 5, 6}		-0.7		0.79	S-Sep.2015	-1.0
Nonalcoholic beverages and beverage materials.....	0.977	-0.2	-0.002	0.34	S-Nov.2015	-0.3
Juices and nonalcoholic drinks ⁵	0.687	-0.4	-0.003	0.43	S-Mar.2015	-0.6
Carbonated drinks.....	0.270	-0.4	-0.001	0.68	S-Sep.2015	-0.4
Frozen noncarbonated juices and drinks ^{4, 5}	0.011	-1.7	0.000	0.64	S-Jun.2009	-1.7
Nonfrozen noncarbonated juices and drinks ⁵	0.405	-0.4	-0.002	0.61	S-Nov.2015	-0.8
Beverage materials including coffee and tea ⁵	0.290	-0.2	-0.001	0.44	S-Nov.2015	-0.5
Coffee.....	0.182	-0.2	0.000	0.59	S-Nov.2015	-0.9
Roasted coffee ⁶		-0.5		0.64	S-Nov.2015	-0.5
Instant and freeze dried coffee ^{4, 6}		-0.9		1.03	S-Oct.2015	-1.1
Other beverage materials including tea ⁵	0.109	-0.1	0.000	0.62	S-Sep.2015	-0.8
Other food at home.....	2.033	-0.2	-0.004	0.23	—	—
Sugar and sweets ⁴	0.297	-0.1	0.000	0.58	—	—
Sugar and artificial sweeteners.....	0.050	-0.7	0.000	0.62	S-Nov.2015	-0.7
Candy and chewing gum ^{4, 5}	0.190	-1.1	-0.002	0.89	S-Apr.2015	-2.0
Other sweets ⁵	0.056	-1.2	-0.001	0.63	S-Oct.2014	-1.3
Fats and oils.....	0.240	-0.6	-0.001	0.42	S-Nov.2015	-0.8
Butter and margarine ⁵	0.070	-0.5	0.000	0.65	S-Nov.2015	-2.1
Butter ⁶		-0.7		0.92	S-Nov.2015	-3.3
Margarine ⁶		-0.8		1.02	S-Jul.2015	-1.0
Salad dressing ⁵	0.059	-1.1	-0.001	0.82	S-May 2014	-1.7
Other fats and oils including peanut butter ⁵	0.111	0.0	0.000	0.62	—	—

See footnotes at end of table.

Table 6. Consumer Price Index for All Urban Consumers (CPI-U): U.S. city average, by expenditure category, January 2016, 1-month analysis table — Continued

[1982-84=100, unless otherwise noted]

Expenditure category	Relative importance Dec. 2015	One Month				
		Seasonally adjusted percent change Dec. 2015-Jan. 2016	Seasonally adjusted effect on All Items Dec. 2015-Jan. 2016 ¹	Standard error, median price change ²	Largest (L) or Smallest (S) seasonally adjusted change since: ³	
					Date	Percent change
Peanut butter ^{4, 5, 6}		-0.2		1.00	S-Nov.2015	-2.8
Other foods.....	1.496	-0.2	-0.003	0.28	L-Nov.2015	-0.1
Soups.....	0.090	-0.3	0.000	1.02	—	—
Frozen and freeze dried prepared foods ⁴	0.269	-1.4	-0.004	0.63	S-Jan.2015	-1.4
Snacks ⁴	0.340	0.1	0.001	0.66	L-Nov.2015	0.1
Spices, seasonings, condiments, sauces.....	0.284	0.2	0.001	0.59	L-Nov.2015	0.4
Salt and other seasonings and spices ^{5, 6}		1.7		0.93	L-Jun.2015	2.0
Olives, pickles, relishes ^{4, 5, 6}		1.6		1.56	L-Sep.2015	2.5
Sauces and gravies ^{5, 6}		1.0		0.87	L-Sep.2015	2.3
Other condiments ⁶		0.1		0.97	S-Nov.2015	-0.4
Baby food ^{4, 5}	0.056	0.3	0.000	0.38	S-Nov.2015	-0.4
Other miscellaneous foods ^{4, 5}	0.458	-1.8	-0.008	0.51	S-Dec.2001	-1.9
Prepared salads ^{4, 7, 6}		-1.5		0.55	S-May 2013	-2.7
Food away from home ⁴	5.785	0.3	0.019	0.06	L-Sep.2015	0.5
Full service meals and snacks ^{4, 5}	2.804	0.2	0.006	0.07	L-Nov.2015	0.2
Limited service meals and snacks ^{4, 5}	2.452	0.5	0.012	0.10	L-Nov.2014	0.5
Food at employee sites and schools ⁵	0.198	0.4	0.001	0.16	L-Oct.2015	1.0
Food at elementary and secondary schools ^{4, 8, 6}		0.2		0.08	L-Oct.2015	1.9
Food from vending machines and mobile vendors ^{4, 5}	0.081	0.3	0.000	0.34	S-Nov.2015	0.1
Other food away from home ^{4, 5}	0.250	0.1	0.000	0.11	S-Oct.2015	0.0
Energy.....	6.816	-2.8	-0.198	0.15	—	—
Energy commodities.....	3.228	-4.8	-0.169	0.12	—	—
Fuel oil and other fuels.....	0.180	-5.7	-0.010	0.53	S-Jan.2015	-9.2
Fuel oil ⁴	0.093	-6.5	-0.006	0.37	L-Nov.2015	-1.3
Propane, kerosene, and firewood ⁹	0.087	-0.9	-0.001	0.78	S-Nov.2015	-1.0
Motor fuel.....	3.048	-4.8	-0.158	0.12	—	—
Gasoline (all types).....	3.000	-4.8	-0.156	0.12	—	—
Gasoline, unleaded regular ⁶		-5.0		0.38	—	—
Gasoline, unleaded midgrade ^{10, 6}		-4.6		0.36	L-Nov.2015	0.2
Gasoline, unleaded premium ⁶		-3.3		0.31	—	—
Other motor fuels ⁵	0.048	-5.4	-0.003	0.12	S-Aug.2015	-5.7
Energy services ¹¹	3.588	-0.7	-0.025	0.28	—	—
Electricity ¹¹	2.833	-0.7	-0.020	0.35	S-May 2015	-1.0
Utility (piped) gas service ¹¹	0.755	-0.6	-0.004	0.28	L-Aug.2015	0.6
All items less food and energy.....	79.169	0.3	0.231	0.04	L-Aug.2011	0.3
Commodities less food and energy commodities.....	19.613	0.2	0.046	0.09	L-Mar.2015	0.2
Household furnishings and supplies ¹²	3.310	-0.1	-0.002	0.16	S-Nov.2015	-0.2
Window and floor coverings and other linens ^{4, 5}	0.272	0.5	0.001	0.56	S-Nov.2015	0.3
Floor coverings ^{4, 5}	0.059	0.3	0.000	0.41	S-Nov.2015	-0.1
Window coverings ^{4, 5}	0.055	2.9	0.002	0.50	S-Nov.2015	0.9
Other linens ^{4, 5}	0.158	-0.2	0.000	0.83	S-Oct.2015	-1.2
Furniture and bedding ⁴	0.794	0.0	0.000	0.31	S-Nov.2015	0.0
Bedroom furniture ⁴	0.280	-0.6	-0.002	0.47	S-Jul.2015	-1.5
Living room, kitchen, and dining room furniture ^{4, 5}	0.369	1.4	0.005	0.50	L-Apr.2015	1.6
Other furniture ⁵	0.139	-2.2	-0.003	0.61	S-Nov.2013	-2.6
Infants' furniture ^{4, 8, 6}						
Appliances ⁵	0.189	0.2	0.000	0.46	L-Jul.2014	0.6
Major appliances ⁵	0.060	-0.5	0.000	0.67	S-Nov.2015	-0.8
Laundry equipment ⁶		-0.5		0.95	S-Nov.2015	-1.5
Other appliances ^{4, 5}	0.126	1.8	0.002	0.66	L-Feb.2010	1.8
Other household equipment and furnishings ⁵	0.480	0.1	0.001	0.51	L-Sep.2015	0.7
Clocks, lamps, and decorator items ⁴	0.251	0.6	0.002	0.88	L-Jan.2015	0.7

See footnotes at end of table.

Table 6. Consumer Price Index for All Urban Consumers (CPI-U): U.S. city average, by expenditure category, January 2016, 1-month analysis table — Continued

[1982-84=100, unless otherwise noted]

Expenditure category	Relative importance Dec. 2015	One Month				
		Seasonally adjusted percent change Dec. 2015-Jan. 2016	Seasonally adjusted effect on All Items Dec. 2015-Jan. 2016 ¹	Standard error, median price change ²	Largest (L) or Smallest (S) seasonally adjusted change since: ³	
					Date	Percent change
Indoor plants and flowers ¹³	0.105	0.2	0.000	0.50	L-Oct.2015	1.0
Dishes and flatware ^{4, 5}	0.054	3.9	0.002	1.23	L-Jan.2013	4.3
Nonelectric cookware and tableware ⁵	0.071	1.2	0.001	0.42	L-Sep.2014	1.5
Tools, hardware, outdoor equipment and supplies ⁵	0.692	-0.4	-0.003	0.25	S-Jan.2015	-0.5
Tools, hardware and supplies ^{4, 5}	0.183	0.2	0.000	0.39	L-Oct.2015	0.3
Outdoor equipment and supplies ⁵	0.345	-0.5	-0.002	0.32	S-Jan.2015	-0.6
Housekeeping supplies ⁴	0.885	-0.2	-0.002	0.26	S-Aug.2015	-0.2
Household cleaning products ⁵	0.349	-0.1	0.000	0.45	S-Nov.2015	-0.1
Household paper products ^{4, 5}	0.239	0.1	0.000	0.43	L-Nov.2015	0.5
Miscellaneous household products ^{4, 5}	0.296	-0.5	-0.001	0.41	S-Sep.2015	-0.6
Apparel.....	3.101	0.6	0.018	0.41	L-Dec.2013	0.8
Men's and boys' apparel.....	0.789	-0.2	-0.002	0.74	S-Oct.2015	-0.4
Men's apparel.....	0.629	-0.8	-0.005	0.80	S-Oct.2015	-1.3
Men's suits, sport coats, and outerwear.....	0.094	1.4	0.001	2.00	L-Aug.2015	2.6
Men's furnishings.....	0.207	-3.3	-0.007	0.89	S-EVER	-
Men's shirts and sweaters ⁵	0.176	-2.9	-0.005	1.56	S-Sep.2012	-3.7
Men's pants and shorts.....	0.145	0.2	0.000	1.57	S-Oct.2015	-1.6
Boys' apparel.....	0.160	1.4	0.002	1.48	L-Nov.2015	2.0
Women's and girls' apparel.....	1.250	0.6	0.007	0.73	L-Jan.2015	0.6
Women's apparel.....	1.041	0.0	0.000	0.78	L-Jul.2015	0.5
Women's outerwear.....	0.072	7.2	0.005	2.43	L-Oct.2012	8.5
Women's dresses.....	0.143	1.5	0.002	2.38	L-Oct.2014	4.1
Women's suits and separates ⁵	0.471	-1.2	-0.006	0.97	S-Nov.2014	-1.4
Women's underwear, nightwear, sportswear and accessories ⁵	0.346	-1.6	-0.006	0.92	S-Feb.2012	-2.2
Girls' apparel.....	0.208	3.7	0.008	1.83	L-Jan.2015	4.0
Footwear.....	0.696	1.0	0.007	0.73	L-Jan.2006	2.0
Men's footwear ⁴	0.213	1.2	0.003	1.07	L-Apr.2015	2.2
Boys' and girls' footwear.....	0.170	1.4	0.002	1.10	L-Mar.2015	2.1
Women's footwear.....	0.313	0.2	0.001	1.17	S-Nov.2015	-0.3
Infants' and toddlers' apparel.....	0.157	-0.2	0.000	0.98	L-Nov.2015	1.0
Jewelry and watches ⁹	0.209	3.2	0.007	0.78	L-Mar.1994	3.2
Watches ^{4, 9}	0.077	2.6	0.002	0.87	L-Jan.2015	2.6
Jewelry ⁹	0.133	4.1	0.006	0.96	L-Oct.1991	4.8
Transportation commodities less motor fuel ¹²	6.335	0.4	0.025	0.09	L-Jul.2011	0.4
New vehicles.....	3.742	0.3	0.011	0.14	L-Oct.2014	0.3
New cars and trucks ^{5, 6}		0.3		0.12	L-Oct.2014	0.3
New cars ⁶		0.3		0.14	L-Jun.2015	0.3
New trucks ^{14, 6}		0.3		0.13	L-Oct.2014	0.3
Used cars and trucks.....	2.101	0.1	0.003	0.01	S-Nov.2015	0.1
Motor vehicle parts and equipment ⁴	0.396	0.4	0.001	0.21	L-Nov.2015	0.5
Tires ⁴	0.238	0.5	0.001	0.29	L-Dec.2014	0.5
Vehicle accessories other than tires ^{4, 5}	0.158	0.2	0.000	0.27	L-Nov.2015	0.7
Vehicle parts and equipment other than tires ^{4, 6}		0.1		0.24	L-Nov.2015	0.8
Motor oil, coolant, and fluids ^{4, 6}		0.2		0.52	S-Oct.2015	-2.4
Medical care commodities.....	1.806	0.4	0.007	0.21	L-Feb.2015	0.5
Medicinal drugs ^{4, 12}	1.746	0.7	0.012	0.22	L-Feb.2015	1.0
Prescription drugs.....	1.377	0.5	0.006	0.24	L-Feb.2015	0.5
Nonprescription drugs ^{4, 12}	0.368	-0.4	-0.001	0.47	L-Nov.2015	-0.2
Medical equipment and supplies ^{4, 12}	0.061	0.3	0.000	0.39	L-May 2015	0.4
Recreation commodities ¹²	1.888	0.0	-0.001	0.17	L-Sep.2015	0.3
Video and audio products ¹²	0.252	-1.2	-0.003	0.35	L-Nov.2015	-0.7

See footnotes at end of table.

Table 6. Consumer Price Index for All Urban Consumers (CPI-U): U.S. city average, by expenditure category, January 2016, 1-month analysis table — Continued

[1982-84=100, unless otherwise noted]

Expenditure category	Relative importance Dec. 2015	One Month				
		Seasonally adjusted percent change Dec. 2015-Jan. 2016	Seasonally adjusted effect on All Items Dec. 2015-Jan. 2016 ¹	Standard error, median price change ²	Largest (L) or Smallest (S) seasonally adjusted change since: ³	
					Date	Percent change
Televisions.....	0.132	-2.2	-0.003	0.60	L-Nov.2015	-0.9
Other video equipment ⁵	0.026	-0.8	0.000	0.78	S-Nov.2015	-1.0
Audio equipment.....	0.064	-1.1	-0.001	0.55	S-Nov.2014	-1.4
Audio discs, tapes and other media ^{4, 5}	0.024	1.2	0.000	0.62	L-Oct.2015	2.5
Pets and pet products ⁴	0.594	0.5	0.003	0.30	L-Sep.2015	0.6
Pet food ^{4, 5, 6}		0.2		0.33	—	—
Purchase of pets, pet supplies, accessories ^{4, 5, 6}		0.9		0.43	L-Sep.2014	1.4
Sporting goods ⁴	0.446	0.0	0.000	0.31	L-Sep.2015	0.1
Sports vehicles including bicycles ⁴	0.231	0.2	0.000	0.43	L-Jul.2015	0.8
Sports equipment.....	0.206	0.0	0.000	0.44	S-Nov.2015	0.0
Photographic equipment and supplies.....	0.038	-0.1	0.000	0.96	S-Nov.2015	-0.4
Film and photographic supplies ^{4, 5, 6}						
Photographic equipment ^{5, 6}		0.0		1.06	L-Jul.2015	0.5
Recreational reading materials ⁴	0.155	-0.7	-0.001	0.48	S-Jun.2014	-1.0
Newspapers and magazines ^{4, 5}	0.087	-0.3	0.000	0.68	L-Oct.2015	0.2
Recreational books ^{4, 5}	0.067	-1.1	-0.001	0.59	S-Oct.2012	-1.1
Other recreational goods ⁵	0.403	0.0	0.000	0.48	L-Oct.2015	0.1
Toys.....	0.328	-0.3	-0.001	0.59	L-Sep.2015	0.2
Toys, games, hobbies and playground equipment ^{1, 6}		-0.3		0.68	L-Nov.2015	-0.3
Sewing machines, fabric and supplies ^{4, 5}	0.026	-1.6	0.000	1.32	S-Dec.2014	-2.0
Music instruments and accessories ^{4, 5}	0.033	1.3	0.000	0.42	L-Jul.2015	1.9
Education and communication commodities ¹²	0.650	-1.3	-0.008	0.30	S-EVER	—
Educational books and supplies.....	0.160	-0.4	-0.001	0.45	S-Jan.2014	-1.6
College textbooks ^{4, 15, 6}		0.1		0.41	S-Jun.2015	-0.8
Information technology commodities ¹²	0.490	-1.7	-0.009	0.40	S-Jun.2011	-1.7
Personal computers and peripheral equipment ⁷	0.296	-2.2	-0.007	0.49	S-Aug.2011	-2.2
Computer software and accessories ^{4, 5}	0.096	-0.7	-0.001	0.82	L-Oct.2015	0.5
Telephone hardware, calculators, and other consumer information items ^{4, 5}	0.098	-0.8	-0.001	0.84	L-Oct.2015	0.7
Alcoholic beverages.....	0.958	0.5	0.004	0.16	L-Oct.2015	0.5
Alcoholic beverages at home.....	0.592	0.6	0.004	0.23	L-Oct.2015	0.9
Beer, ale, and other malt beverages at home.....	0.271	0.5	0.001	0.28	L-Oct.2015	0.8
Distilled spirits at home.....	0.074	-0.2	0.000	0.39	S-Sep.2015	-0.3
Whiskey at home ^{4, 6}		0.2		0.40	L-Nov.2015	0.5
Distilled spirits, excluding whiskey, at home ⁶		-0.1		0.55	S-Nov.2015	-0.1
Wine at home.....	0.247	0.8	0.002	0.44	L-Nov.2014	1.1
Alcoholic beverages away from home ⁴	0.366	0.1	0.001	0.18	S-Nov.2015	0.1
Beer, ale, and other malt beverages away from home ^{4, 5, 6}		0.2		0.15	S-Nov.2015	0.0
Wine away from home ^{4, 5, 6}		0.0		0.24	S-Nov.2015	-0.1
Distilled spirits away from home ^{4, 5, 6}		0.1		0.20	L-Nov.2015	0.4
Other goods ¹²	1.563	0.2	0.002	0.18	L-Oct.2015	0.5
Tobacco and smoking products.....	0.655	0.2	0.001	0.16	S-Sep.2015	0.1
Cigarettes ⁵	0.593	0.1	0.000	0.17	S-Apr.2015	0.0
Tobacco products other than cigarettes ^{4, 5}	0.045	1.1	0.000	0.53	L-Feb.2015	1.4
Personal care products ⁴	0.717	0.2	0.001	0.31	L-Oct.2015	0.6
Hair, dental, shaving, and miscellaneous personal care products ^{4, 5}	0.381	0.1	0.001	0.46	L-Oct.2015	0.3
Cosmetics, perfume, bath, nail preparations and implements ⁴	0.330	0.2	0.001	0.40	L-Oct.2015	1.0
Miscellaneous personal goods ⁵	0.191	0.0	0.000	0.44	L-Oct.2015	0.3
Stationery, stationery supplies, gift wrap ⁶		0.1		0.54	L-Oct.2015	0.4

See footnotes at end of table.

Table 6. Consumer Price Index for All Urban Consumers (CPI-U): U.S. city average, by expenditure category, January 2016, 1-month analysis table — Continued

[1982-84=100, unless otherwise noted]

Expenditure category	Relative importance Dec. 2015	One Month				
		Seasonally adjusted percent change Dec. 2015-Jan. 2016	Seasonally adjusted effect on All Items Dec. 2015-Jan. 2016 ¹	Standard error, median price change ²	Largest (L) or Smallest (S) seasonally adjusted change since: ³	
					Date	Percent change
Infants' equipment ^{4, 8, 6}		0.1		0.51	L-Oct.2015	0.2
Services less energy services.....	59.556	0.3	0.186	0.04	L-Nov.2015	0.3
Shelter.....	33.150	0.3	0.099	0.06	L-Oct.2015	0.3
Rent of shelter ¹⁶	32.801	0.3	0.093	0.06	—	—
Rent of primary residence ¹¹	7.733	0.3	0.022	0.04	L-Nov.2015	0.3
Lodging away from home ⁵	0.841	2.0	0.018	1.89	L-Jul.2015	2.7
Housing at school, excluding board ^{11, 16}	0.120	0.2	0.000	0.04	S-Nov.2015	0.2
Other lodging away from home including hotels and motels.....	0.721	1.4	0.011	2.30	L-Jul.2015	3.2
Owners' equivalent rent of residences ^{11, 16}	24.227	0.2	0.059	0.03	—	—
Owners' equivalent rent of primary residence ^{11, 16}	23.116	0.2	0.057	0.03	—	—
Tenants' and household insurance ^{4, 5}	0.350	0.1	0.000	0.31	S-Oct.2015	0.0
Water and sewer and trash collection services ⁵	1.157	0.2	0.003	0.13	S-Oct.2015	0.1
Water and sewerage maintenance ¹¹	0.870	0.3	0.003	0.16	—	—
Garbage and trash collection ^{4, 14}	0.287	0.0	0.000	0.17	S-Jun.2015	-0.1
Household operations ^{4, 5}	0.849	0.0	0.000	0.14	S-Oct.2015	0.0
Domestic services ^{4, 5}	0.284	0.3	0.001	0.12	L-Jan.2015	0.3
Gardening and lawn care services ^{4, 5}						
Moving, storage, freight expense ⁵	0.114	-0.7	-0.001	0.59	S-Dec.2014	-1.7
Repair of household items ^{4, 5}	0.087	-0.1	0.000	0.12	L-Nov.2015	0.8
Medical care services.....	6.569	0.5	0.034	0.08	L-Oct.2015	0.7
Professional services.....	3.131	0.3	0.009	0.10	L-Nov.2015	0.5
Physicians' services ¹¹	1.681	0.1	0.002	0.13	L-Nov.2015	1.0
Dental services ¹¹	0.812	0.3	0.003	0.11	L-Nov.2015	0.4
Eyeglasses and eye care ^{4, 9}	0.324	1.0	0.003	0.38	L-May 2014	1.1
Services by other medical professionals ^{11, 9}	0.314	0.1	0.000	0.14	L-Aug.2015	0.2
Hospital and related services.....	2.459	0.4	0.011	0.11	L-Oct.2015	1.8
Hospital services ^{11, 17}	2.190	0.4	0.009	0.12	L-Oct.2015	2.0
Inpatient hospital services ^{11, 17, 6}		0.6		0.21	L-Oct.2015	2.3
Outpatient hospital services ^{11, 9, 6}		0.2		0.20	L-Oct.2015	1.5
Nursing homes and adult day services ^{11, 17}	0.191	0.1	0.000	0.10	S-May 2014	0.1
Care of invalids and elderly at home ^{4, 8}	0.077	0.5	0.000	0.10	—	—
Health insurance ^{4, 8}	0.979	1.1	0.010	0.08	L-Oct.2015	1.2
Transportation services.....	5.876	0.4	0.026	0.14	L-Nov.2015	0.5
Leased cars and trucks ¹⁵	0.570	0.3	0.002	0.31	S-Oct.2015	-0.3
Car and truck rental ⁵	0.095	4.0	0.004	1.50	L-Dec.2013	4.0
Motor vehicle maintenance and repair ⁴	1.167	0.0	0.001	0.17	S-Aug.2015	-0.1
Motor vehicle body work ⁴	0.057	0.1	0.000	0.14	L-Nov.2015	0.1
Motor vehicle maintenance and servicing ⁴	0.677	0.1	0.001	0.20	S-Sep.2015	-0.2
Motor vehicle repair ^{4, 5}	0.391	0.0	0.000	0.27	S-Nov.2015	0.0
Motor vehicle insurance.....	2.379	0.4	0.009	0.23	S-Oct.2015	-0.1
Motor vehicle fees ^{4, 5}	0.530	0.5	0.003	0.11	L-Jul.2015	1.4
State motor vehicle registration and license fees ^{4, 11, 5}	0.285	0.3	0.001	0.08	L-Jul.2015	2.3
Parking and other fees ⁵	0.234	0.3	0.001	0.18	L-Aug.2015	0.3
Parking fees and tolls ^{4, 5, 6}		1.0		0.24	L-Jul.2012	1.0
Automobile service clubs ^{4, 5, 6}		0.3		0.17	L-Mar.2015	0.5
Public transportation.....	1.135	0.7	0.008	0.36	L-Jun.2015	1.8
Airline fare.....	0.669	1.2	0.008	0.51	L-Jun.2015	3.3
Other intercity transportation.....	0.180	0.1	0.000	0.67	S-Nov.2015	-1.1
Intercity bus fare ^{4, 7, 6}						
Intercity train fare ^{4, 7, 6}		-3.6		1.12	S-Aug.2015	-4.4

See footnotes at end of table.

Table 6. Consumer Price Index for All Urban Consumers (CPI-U): U.S. city average, by expenditure category, January 2016, 1-month analysis table — Continued
 [1982-84=100, unless otherwise noted]

Expenditure category	Relative importance Dec. 2015	One Month				
		Seasonally adjusted percent change Dec. 2015-Jan. 2016	Seasonally adjusted effect on All Items Dec. 2015-Jan. 2016 ¹	Standard error, median price change ²	Largest (L) or Smallest (S) seasonally adjusted change since: ³	
					Date	Percent change
Ship fare ^{4, 5, 6}		-0.8		0.79	S-May 2015	-1.2
Intracity transportation ⁴	0.282	0.0	0.000	0.06	—	—
Intracity mass transit ^{4, 12, 6}		0.0		0.08	—	—
Recreation services ¹²	3.846	0.3	0.011	0.16	—	—
Video and audio services ¹²	1.603	0.0	0.000	0.13	S-Aug.2015	0.0
Cable and satellite television and radio service ¹⁴	1.497	0.0	0.000	0.13	S-Aug.2015	-0.1
Video discs and other media, including rental of video and audio ^{4, 5}	0.107	-0.1	0.000	0.90	S-Nov.2015	-1.0
Video discs and other media ^{4, 5, 6}		-1.8		1.27	S-Oct.2015	-3.2
Rental of video or audio discs and other media ^{4, 5, 6}		0.0		0.29	S-Nov.2015	0.0
Pet services including veterinary ⁵	0.368	0.0	0.000	0.11	S-Jan.2013	0.0
Pet services ^{4, 5, 6}		-0.1		0.12	S-Oct.2015	-0.2
Veterinarian services ^{5, 6}		0.1		0.12	S-Aug.2014	0.1
Photographers and film processing ^{4, 5}	0.050	0.3	0.000	0.39	—	—
Photographer fees ^{4, 5, 6}		0.0		0.14	—	—
Film processing ^{4, 5, 6}		0.2		0.57	—	—
Other recreation services ⁵	1.824	0.6	0.011	0.33	L-Jun.2015	0.8
Club dues and fees for participant sports and group exercises ^{4, 5}	0.639	0.2	0.001	0.45	L-Jul.2015	0.5
Admissions ⁴	0.638	1.2	0.008	0.55	L-Feb.2015	1.4
Admission to movies, theaters, and concerts ^{4, 5, 6}		-0.8		0.52	S-Apr.2013	-0.8
Admission to sporting events ^{4, 5, 6}		5.4		0.66	L-EVER	—
Fees for lessons or instructions ^{4, 9}	0.224	0.1	0.000	0.18	S-Oct.2015	0.1
Education and communication services ¹²	6.495	0.2	0.011	0.07	L-Nov.2015	0.3
Tuition, other school fees, and childcare.....	3.028	0.0	0.001	0.08	S-Jul.2014	0.0
College tuition and fees.....	1.803	-0.1	-0.001	0.12	S-Jul.2014	-0.1
Elementary and high school tuition and fees.....	0.311	0.3	0.001	0.07	—	—
Child care and nursery school ¹³	0.741	0.0	0.000	0.11	S-Apr.2014	0.0
Technical and business school tuition and fees ⁵	0.042	0.5	0.000	0.10	L-Jan.2013	1.0
Postage and delivery services ⁵	0.138	0.4	0.001	0.02	L-Feb.2014	3.3
Postage ⁴	0.131	0.6	0.001	0.00	L-Feb.2014	3.6
Delivery services ⁵	0.007	-2.6	0.000	0.18	S-Feb.2009	-4.1
Telephone services ^{4, 5}	2.588	0.1	0.004	0.10	L-Nov.2015	0.4
Wireless telephone services ^{4, 5}	1.852	-0.1	-0.001	0.12	S-May 2015	-0.7
Land-line telephone services ^{4, 12}	0.736	0.7	0.005	0.13	L-Jan.2015	0.8
Internet services and electronic information providers ⁵	0.728	0.8	0.006	0.26	L-Feb.2010	1.2
Other personal services ^{4, 12}	1.613	0.2	0.003	0.08	L-Nov.2015	0.2
Personal care services ⁴	0.610	0.2	0.001	0.11	L-Nov.2015	0.4
Haircuts and other personal care services ^{4, 5}	0.610	0.2	0.001	0.11	L-Nov.2015	0.4
Miscellaneous personal services.....	1.003	0.1	0.001	0.10	—	—
Legal services ^{4, 9}	0.241	-0.4	-0.001	0.15	S-Nov.2013	-0.4
Funeral expenses ^{4, 9}	0.145	0.2	0.000	0.12	L-Oct.2015	0.6
Laundry and dry cleaning services ^{4, 5}	0.266	0.2	0.000	0.11	—	—
Apparel services other than laundry and dry cleaning ^{4, 5}	0.027	0.1	0.000	0.17	—	—
Financial services ^{4, 9}	0.227	0.6	0.001	0.28	L-Jun.2015	1.0
Checking account and other bank services ^{4, 5, 6}		0.1		0.02	—	—
Tax return preparation and other accounting fees ^{4, 5, 6}		0.9		0.39	L-Mar.2015	0.9

See footnotes at end of table.

Table 6. Consumer Price Index for All Urban Consumers (CPI-U): U.S. city average, by expenditure category, January 2016, 1-month analysis table — Continued

[1982-84=100, unless otherwise noted]

Expenditure category	Relative importance Dec. 2015	One Month				
		Seasonally adjusted percent change Dec. 2015-Jan. 2016	Seasonally adjusted effect on All Items Dec. 2015-Jan. 2016 ¹	Standard error, median price change ²	Largest (L) or Smallest (S) seasonally adjusted change since: ³	
					Date	Percent change
Special aggregate indexes						
All items less food.....	85.985	0.0	0.024	0.04	L-Nov.2015	0.2
All items less shelter.....	66.850	-0.1	-0.074	0.04	L-Nov.2015	0.1
All items less food and shelter.....	52.834	-0.1	-0.079	0.05	L-Nov.2015	0.1
All items less food, shelter, and energy.....	46.018	0.3	0.130	0.05	L-Jan.2013	0.3
All items less food, shelter, energy, and used cars and trucks.....	43.918	0.3	0.115	0.05	L-Jan.2013	0.3
All items less medical care.....	91.625	0.0	-0.011	0.04	L-Nov.2015	0.1
All items less energy.....	93.184	0.3	0.233	0.03	L-Aug.2011	0.3
Commodities.....	36.856	-0.4	-0.130	0.06	L-Nov.2015	0.0
Commodities less food, energy, and used cars and trucks.....	17.512	0.2	0.031	0.10	L-Jan.2013	0.2
Commodities less food.....	22.841	-0.6	-0.137	0.07	L-Nov.2015	0.0
Commodities less food and beverages.....	21.883	-0.6	-0.143	0.08	L-Nov.2015	0.0
Services.....	63.144	0.3	0.160	0.05	L-Oct.2015	0.3
Services less rent of shelter ¹⁶	30.343	0.1	0.045	0.07	—	—
Services less medical care services.....	56.575	0.2	0.095	0.05	—	—
Durables.....	9.647	0.0	0.003	0.08	L-Sep.2015	0.0
Nondurables.....	27.209	-0.7	-0.194	0.07	S-Sep.2015	-0.7
Nondurables less food.....	13.194	-1.2	-0.167	0.11	S-Sep.2015	-1.7
Nondurables less food and beverages.....	12.236	-1.4	-0.170	0.11	S-Sep.2015	-1.8
Nondurables less food, beverages, and apparel.....	9.135	-1.7	-0.165	0.08	S-Sep.2015	-2.4
Nondurables less food and apparel.....	10.093	-1.6	-0.163	0.07	S-Sep.2015	-2.2
Housing.....	42.235	0.1	0.062	0.06	—	—
Education and communication ⁵	7.145	0.0	0.003	0.07	S-Jul.2015	0.0
Education ⁵	3.189	0.0	0.000	0.08	S-Jul.2014	0.0
Communication ⁵	3.956	0.0	0.002	0.10	L-Nov.2015	0.2
Information and information processing ⁵	3.818	0.0	0.001	0.10	L-Nov.2015	0.2
Information technology, hardware and services ¹⁸	1.230	-0.2	-0.003	0.23	—	—
Recreation ⁵	5.734	0.2	0.010	0.12	L-Jun.2015	0.2
Video and audio ⁵	1.856	-0.2	-0.003	0.14	S-Mar.2015	-0.2
Pets, pet products and services ⁵	0.962	0.3	0.003	0.20	L-Sep.2015	0.5
Photography ⁵	0.089	0.0	0.000	0.54	S-Nov.2015	-0.6
Food and beverages.....	14.973	0.0	0.006	0.07	L-Oct.2015	0.1
Domestically produced farm food.....	6.898	-0.2	-0.017	0.13	L-Oct.2015	0.0
Other services.....	11.954	0.2	0.024	0.07	—	—
Apparel less footwear.....	2.405	0.5	0.011	0.48	L-Jan.2015	0.5
Fuels and utilities.....	4.925	-0.6	-0.031	0.21	—	—
Household energy.....	3.768	-0.9	-0.036	0.27	—	—
Medical care.....	8.375	0.5	0.040	0.08	L-Oct.2015	0.6
Transportation.....	15.259	-0.8	-0.131	0.06	L-Nov.2015	0.4
Private transportation.....	14.125	-1.0	-0.139	0.07	L-Nov.2015	0.4
New and used motor vehicles ⁵	6.604	0.4	0.027	0.10	L-Mar.2015	0.4
Utilities and public transportation.....	9.965	0.0	-0.003	0.13	L-Nov.2015	0.2
Household furnishings and operations.....	4.160	-0.1	-0.005	0.13	S-Nov.2015	-0.1
Other goods and services.....	3.177	0.1	0.004	0.09	L-Nov.2015	0.1
Personal care.....	2.522	0.1	0.003	0.11	L-Oct.2015	0.4

¹ The 'effect' of an item category is a measure of that item's contribution to the All items price change. For example, if the Food index had an effect of 0.40, and the All items index rose 1.2 percent, then the increase in food prices contributed 0.40 / 1.2, or 33.3 percent, to that All items increase. Said another way, had food prices been unchanged for that month the change in the All items index would have been 1.2 percent minus 0.40, or 0.8 percent. Effects can be negative as well. For example, if the effect of food was a negative 0.1, and the All items index rose 0.5 percent, the All items index actually would have been 0.1 percent higher (or 0.6 percent) had food prices been unchanged. Since food prices fell while prices overall were rising, the contribution of food to the All items price change was negative (in this case, -0.1 / 0.5, or minus 20 percent).

² A statistic's margin of error is often expressed as its point estimate plus or minus two standard errors. For example, if a CPI category rose 0.6

percent, and its standard error was 0.15 percent, the margin of error on this item's 1-month percent change would be 0.6 percent, plus or minus 0.3 percent.

³ If the current seasonally adjusted 1-month percent change is greater than the previous published 1-month percent change, then this column identifies the closest prior month with a 1-month percent change as (L)arge as or (L)arger than the current 1-month change. If the current 1-month percent change is smaller than the previous published 1-month percent change, the most recent month with a change as (S)maller or (S)maller than the current month change is identified. If the current and previous published 1-month percent changes are equal, a dash will appear. Standard numerical comparisons are used. For example, 0.8% is greater than 0.6%, -0.4% is less than -0.2%, and -0.2% is less than 0.0%. Note that a (L)arger change can be a smaller decline, for example, a -0.2% change is larger than a -0.4% change, but still represents a decline in the price index. Likewise, (S)maller changes can be increases, for example, a 0.6% change is smaller than 0.8%, but still represents an increase in the price index. In this context, a -0.2% change is considered to be smaller than a 0.0% change.

⁴ Not seasonally adjusted.

⁵ Indexes on a December 1997=100 base.

⁶ Special indexes based on a substantially smaller sample. These series do not contribute to the all items index aggregation and therefore do not have a relative importance or effect.

⁷ Indexes on a December 2007=100 base.

⁸ Indexes on a December 2005=100 base.

⁹ Indexes on a December 1986=100 base.

¹⁰ Indexes on a December 1993=100 base.

¹¹ This index series was calculated using a Laspeyres estimator. All other item stratum index series were calculated using a geometric means estimator.

¹² Indexes on a December 2009=100 base.

¹³ Indexes on a December 1990=100 base.

¹⁴ Indexes on a December 1983=100 base.

¹⁵ Indexes on a December 2001=100 base.

¹⁶ Indexes on a December 1982=100 base.

¹⁷ Indexes on a December 1996=100 base.

¹⁸ Indexes on a December 1988=100 base.

NOTE: Index applies to a month as a whole, not to any specific date.

Table 7. Consumer Price Index for All Urban Consumers (CPI-U): U.S. city average, by expenditure category, January 2016, 12-month analysis table
 [1982-84=100, unless otherwise noted]

Expenditure category	Relative importance Dec. 2015	Twelve Month				
		Unadjusted percent change Jan. 2015-Jan. 2016	Unadjusted effect on All Items Jan. 2015-Jan. 2016 ¹	Standard error, median price change ²	Largest (L) or Smallest (S) unadjusted change since: ³	
					Date	Percent change
All items.....	100.000	1.4		0.08	L-Oct.2014	1.7
Food.....	14.015	0.8	0.121	0.13	—	—
Food at home.....	8.230	-0.5	-0.039	0.18	S-Mar.2010	-0.7
Cereals and bakery products.....	1.098	0.4	0.004	0.40	S-Nov.2014	0.2
Cereals and cereal products.....	0.371	-1.0	-0.004	0.67	S-Jan.2013	-1.2
Flour and prepared flour mixes.....	0.043	-2.8	-0.002	0.84	S-Nov.2015	-2.8
Breakfast cereal.....	0.192	-1.5	-0.003	1.05	S-Jan.2013	-1.5
Rice, pasta, cornmeal.....	0.135	0.4	0.001	1.01	S-Sep.2015	-0.1
Rice ^{4, 5}		-1.9		1.28	S-Oct.2015	-1.9
Bakery products.....	0.727	1.0	0.008	0.49	S-May 2015	0.8
Bread ⁴	0.218	1.0	0.002	0.84	L-Nov.2015	2.2
White bread ⁵		0.9		1.17	S-Aug.2015	0.5
Bread other than white ⁵		1.2		1.26	L-Nov.2015	3.0
Fresh biscuits, rolls, muffins ⁴	0.108	1.1	0.001	1.13	S-Oct.2014	0.1
Cakes, cupcakes, and cookies.....	0.176	2.3	0.004	1.20	—	—
Cookies ⁵		0.3		1.51	S-Nov.2015	-0.5
Fresh cakes and cupcakes ⁵		4.7		1.71	L-Nov.2015	5.0
Other bakery products.....	0.225	0.0	0.000	1.03	S-Sep.2014	0.0
Fresh sweetrolls, coffeecakes, doughnuts ⁵		-0.2		1.50	L-Nov.2015	4.2
Crackers, bread, and cracker products ⁵		0.4		1.50	S-Oct.2015	0.4
Frozen and refrigerated bakery products, pies, tarts, turnovers ⁵		-0.7		1.38	S-Sep.2015	-1.2
Meats, poultry, fish, and eggs.....	1.876	-3.5	-0.070	0.38	S-Dec.2009	-3.8
Meats, poultry, and fish.....	1.723	-4.2	-0.079	0.40	S-Feb.1977	-4.6
Meats.....	1.105	-4.9	-0.059	0.51	S-Dec.2009	-5.2
Beef and veal.....	0.498	-5.7	-0.033	0.70	S-Oct.2009	-6.7
Uncooked ground beef.....	0.208	-8.4	-0.020	0.99	S-May 1975	-8.6
Uncooked beef roasts ⁴	0.066	-7.2	-0.006	1.52	S-Oct.2009	-8.2
Uncooked beef steaks ⁴	0.175	-2.4	-0.005	1.31	S-Mar.2010	-2.8
Uncooked other beef and veal ⁴	0.049	-4.1	-0.002	1.35	S-Jan.2005	-4.1
Pork.....	0.339	-7.5	-0.028	0.81	S-Sep.2015	-7.6
Bacon, breakfast sausage, and related products ⁴	0.141	-3.8	-0.005	1.18	S-Sep.2015	-6.4
Bacon and related products ⁵		-0.8		1.27	S-Oct.2015	-1.3
Breakfast sausage and related products ^{4, 5}		-7.2		1.72	L-Nov.2015	-6.8
Ham.....	0.061	-10.1	-0.008	1.93	L-Oct.2015	-8.7
Ham, excluding canned ⁵		-11.4		1.91	L-Oct.2015	-10.4
Pork chops.....	0.057	-8.8	-0.005	1.66	S-Aug.2015	-9.0
Other pork including roasts and picnics ⁴	0.080	-10.4	-0.009	1.74	S-Dec.2009	-11.0
Other meats.....	0.268	0.5	0.001	0.88	S-Feb.2014	-0.6
Frankfurters ⁵		1.3		2.45	S-Mar.2014	-1.7
Lunchmeats ^{4, 5}		1.0		1.08	S-Mar.2014	0.7
Lamb and organ meats ⁵		-0.5		2.53	L-Nov.2015	-0.2
Lamb and mutton ^{4, 5}		-2.1		4.22	S-May 2015	-3.1
Poultry.....	0.354	-3.2	-0.012	0.83	S-Feb.1992	-3.5
Chicken ⁴	0.287	-4.2	-0.012	0.94	S-Nov.2006	-4.2
Fresh whole chicken ⁵		-5.7		1.98	S-May 1990	-5.7
Fresh and frozen chicken parts ⁵		-3.4		1.18	S-Nov.2006	-6.4
Other poultry including turkey ⁴	0.066	1.4	0.001	1.61	S-Nov.2015	0.9
Fish and seafood.....	0.264	-2.7	-0.008	0.84	L-Aug.2015	-1.5
Fresh fish and seafood ⁴	0.141	-2.3	-0.004	1.49	L-Aug.2015	-2.0
Processed fish and seafood ⁴	0.124	-3.2	-0.005	0.95	L-Nov.2015	-3.1
Shelf stable fish and seafood ⁵		0.8		1.25	S-Nov.2015	-0.1

See footnotes at end of table.

Table 7. Consumer Price Index for All Urban Consumers (CPI-U): U.S. city average, by expenditure category, January 2016, 12-month analysis table — Continued
 [1982-84=100, unless otherwise noted]

Expenditure category	Relative importance Dec. 2015	Twelve Month				
		Unadjusted percent change Jan. 2015-Jan. 2016	Unadjusted effect on All Items Jan. 2015-Jan. 2016 ¹	Standard error, median price change ²	Largest (L) or Smallest (S) unadjusted change since: ³	
					Date	Percent change
Frozen fish and seafood ⁵		-6.5		1.70	L-Nov.2015	-5.9
Eggs.....	0.153	6.8	0.009	1.09	S-May 2015	3.1
Dairy and related products.....	0.846	-3.0	-0.027	0.42	L-Oct.2015	-3.0
Milk ⁴	0.244	-7.2	-0.020	0.64	L-Aug.2015	-7.2
Fresh whole milk ⁵		-7.7		1.04	L-Jul.2015	-6.5
Fresh milk other than whole ^{4, 5}		-6.6		0.89	L-Nov.2015	-6.6
Cheese and related products.....	0.272	-2.7	-0.008	0.81	L-Sep.2015	-1.6
Ice cream and related products.....	0.120	0.2	0.000	1.18	L-Nov.2015	0.8
Other dairy and related products ⁴	0.211	0.1	0.000	0.81	L-Oct.2015	0.3
Fruits and vegetables.....	1.399	2.7	0.038	0.60	L-Dec.2014	3.2
Fresh fruits and vegetables.....	1.102	3.3	0.037	0.73	L-Dec.2014	4.1
Fresh fruits.....	0.587	2.7	0.016	1.01	L-Dec.2014	3.6
Apples.....	0.086	5.6	0.005	2.01	S-Nov.2015	1.7
Bananas.....	0.090	0.4	0.000	0.98	S-Nov.2015	-1.2
Citrus fruits ⁴	0.145	0.9	0.001	2.67	S-Oct.2015	-1.0
Oranges, including tangerines ⁵		0.1		2.41	S-May 2015	-4.8
Other fresh fruits ⁴	0.266	3.5	0.009	1.57	L-Dec.2014	6.2
Fresh vegetables.....	0.515	3.9	0.021	0.92	L-Jan.2015	4.3
Potatoes.....	0.075	-0.6	0.000	1.93	S-Aug.2015	-1.1
Lettuce.....	0.076	-0.9	-0.001	2.31	S-Aug.2015	-1.6
Tomatoes.....	0.090	8.1	0.008	1.99	L-Jan.2015	9.6
Other fresh vegetables.....	0.274	5.3	0.014	1.33	L-Oct.2013	5.3
Processed fruits and vegetables ⁴	0.297	0.5	0.001	0.64	L-Nov.2015	1.3
Canned fruits and vegetables ⁴	0.155	0.7	0.001	1.05	L-Nov.2015	0.8
Canned fruits ^{4, 5}		2.7		1.33	L-Nov.2015	5.0
Canned vegetables ^{4, 5}		-0.5		1.44	L-Sep.2015	1.0
Frozen fruits and vegetables ⁴	0.087	0.0	0.000	1.18	L-Nov.2015	1.3
Frozen vegetables ⁵		-0.4		1.47	L-Nov.2015	1.0
Other processed fruits and vegetables including dried ⁴	0.056	0.3	0.000	1.17	S-Mar.2015	-0.4
Dried beans, peas, and lentils ^{4, 5}		0.4		2.10	L-Nov.2015	1.2
Nonalcoholic beverages and beverage materials.....	0.977	0.1	0.001	0.45	S-Nov.2015	0.0
Juices and nonalcoholic drinks ⁴	0.687	0.6	0.004	0.53	S-Nov.2015	0.5
Carbonated drinks.....	0.270	0.9	0.002	0.84	L-Sep.2015	1.2
Frozen noncarbonated juices and drinks ⁴	0.011	-1.6	0.000	1.20	S-Apr.2013	-1.7
Nonfrozen noncarbonated juices and drinks ⁴	0.405	0.6	0.002	0.83	S-Nov.2015	0.6
Beverage materials including coffee and tea ⁴	0.290	-1.5	-0.003	0.78	S-Nov.2015	-1.5
Coffee.....	0.182	-2.9	-0.004	1.06	S-May 2014	-4.0
Roasted coffee ⁵		-2.2		1.22	S-Jun.2014	-3.4
Instant and freeze dried coffee ⁵		-5.5		1.65	S-Feb.2014	-6.3
Other beverage materials including tea ⁴	0.109	0.8	0.001	0.88	L-Aug.2015	1.1
Other food at home.....	2.033	0.8	0.016	0.34	S-Jul.2014	0.7
Sugar and sweets.....	0.297	0.6	0.002	0.76	S-Nov.2014	-0.2
Sugar and artificial sweeteners.....	0.050	1.3	0.001	1.02	S-Jan.2015	0.9
Candy and chewing gum ⁴	0.190	0.8	0.001	1.19	S-Nov.2014	0.2
Other sweets ⁴	0.056	-0.5	0.000	0.96	S-Sep.2015	-1.1
Fats and oils.....	0.240	-0.8	-0.002	0.66	S-Nov.2015	-1.7
Butter and margarine ⁴	0.070	0.7	0.000	1.16	L-Apr.2015	2.4
Butter ⁵		-0.6		1.61	S-Nov.2015	-4.1
Margarine ⁵		2.3		1.36	L-Dec.2014	2.6
Salad dressing ⁴	0.059	-0.2	0.000	1.06	S-Sep.2015	-0.3
Other fats and oils including peanut butter ⁴	0.111	-2.2	-0.002	1.06	L-Jun.2015	-2.2
Peanut butter ^{4, 5}		-2.6		1.50	L-Mar.2013	-1.7
Other foods.....	1.496	1.1	0.016	0.40	L-Nov.2015	1.7

See footnotes at end of table.

Table 7. Consumer Price Index for All Urban Consumers (CPI-U): U.S. city average, by expenditure category, January 2016, 12-month analysis table — Continued
 [1982-84=100, unless otherwise noted]

Expenditure category	Relative importance Dec. 2015	Twelve Month				
		Unadjusted percent change Jan. 2015-Jan. 2016	Unadjusted effect on All Items Jan. 2015-Jan. 2016 ¹	Standard error, median price change ²	Largest (L) or Smallest (S) unadjusted change since: ³	
					Date	Percent change
Soups.....	0.090	1.4	0.001	1.38	S-Sep.2015	1.1
Frozen and freeze dried prepared foods.....	0.269	-0.3	-0.001	0.91	—	—
Snacks.....	0.340	2.8	0.009	1.07	L-Sep.2015	3.2
Spices, seasonings, condiments, sauces.....	0.284	2.3	0.007	0.90	L-Nov.2015	4.1
Salt and other seasonings and spices ^{4, 5}		5.2		1.35	L-Oct.2015	7.0
Olives, pickles, relishes ^{4, 5}		4.0		2.00	L-Nov.2015	4.7
Sauces and gravies ^{4, 5}		1.5		1.34	L-Nov.2015	3.0
Other condiments ⁵		3.1		1.74	L-Oct.2015	4.2
Baby food ⁴	0.056	0.0	0.000	0.77	L-Sep.2015	0.1
Other miscellaneous foods ⁴	0.458	0.0	0.000	0.70	S-Oct.2013	-0.2
Prepared salads ^{6, 5}		3.1		1.20	S-Aug.2015	2.7
Food away from home.....	5.785	2.7	0.160	0.17	L-Nov.2015	2.7
Full service meals and snacks ⁴	2.804	2.4	0.068	0.23	L-Nov.2015	2.4
Limited service meals and snacks ⁴	2.452	2.7	0.066	0.29	L-Nov.2015	2.7
Food at employee sites and schools ⁴	0.198	5.2	0.011	0.64	L-Jul.2013	5.8
Food at elementary and secondary schools ^{7, 5}		4.7		0.41	L-Oct.2015	4.7
Food from vending machines and mobile vendors ⁴	0.081	1.6	0.001	1.22	S-Mar.2015	1.4
Other food away from home ⁴	0.250	4.2	0.013	0.44	L-Apr.2009	4.3
Energy.....	6.816	-6.5	-0.476	0.17	L-Nov.2014	-4.8
Energy commodities.....	3.228	-8.5	-0.294	0.19	L-Oct.2014	-4.9
Fuel oil and other fuels.....	0.180	-20.1	-0.044	0.81	L-Dec.2014	-13.7
Fuel oil.....	0.093	-28.7	-0.036	0.82	L-Jun.2015	-27.7
Propane, kerosene, and firewood ⁶	0.087	-8.8	-0.008	1.48	L-Dec.2014	-4.6
Motor fuel.....	3.048	-7.7	-0.250	0.20	L-Oct.2014	-5.0
Gasoline (all types).....	3.000	-7.3	-0.233	0.20	L-Oct.2014	-5.0
Gasoline, unleaded regular ⁵		-8.2		0.46	L-Oct.2014	-5.2
Gasoline, unleaded midgrade ^{9, 5}		-4.8		0.52	L-Oct.2014	-4.0
Gasoline, unleaded premium ⁵		-2.5		0.38	L-Aug.2014	-1.9
Other motor fuels ⁴	0.048	-26.3	-0.017	0.26	L-Jun.2015	-25.7
Energy services ¹⁰	3.588	-4.7	-0.182	0.30	S-Jan.2010	-4.7
Electricity ¹⁰	2.833	-2.4	-0.073	0.38	S-Feb.2010	-2.7
Utility (piped) gas service ¹⁰	0.755	-12.7	-0.109	0.49	L-Nov.2015	-11.7
All items less food and energy.....	79.169	2.2	1.728	0.10	L-Jun.2012	2.2
Commodities less food and energy commodities.....	19.613	-0.1	-0.018	0.24	L-Dec.2013	-0.1
Household furnishings and supplies ¹¹	3.310	-0.8	-0.027	0.30	L-May 2013	-0.8
Window and floor coverings and other linens ⁴	0.272	-1.0	-0.003	1.12	S-Nov.2015	-4.1
Floor coverings ⁴	0.059	0.5	0.000	1.00	S-Nov.2015	0.2
Window coverings ⁴	0.055	0.4	0.000	1.32	L-Nov.2014	1.1
Other linens ⁴	0.158	-1.9	-0.003	1.68	S-Nov.2015	-3.3
Furniture and bedding.....	0.794	-0.3	-0.002	0.70	L-Sep.2015	0.2
Bedroom furniture.....	0.280	1.2	0.003	1.13	L-Jun.2012	1.3
Living room, kitchen, and dining room furniture ⁴	0.369	-1.0	-0.004	1.16	L-Oct.2015	-0.3
Other furniture ⁴	0.139	-1.0	-0.002	1.75	S-Oct.2014	-1.0
Infants' furniture ^{7, 5}						
Appliances ⁴	0.189	-2.9	-0.009	0.92	L-Jun.2015	-2.6
Major appliances ⁴	0.060	-4.0	-0.007	1.24	L-Sep.2015	-3.9
Laundry equipment ⁵		-4.0		1.34	L-Nov.2015	-2.6
Other appliances ⁴	0.126	-1.8	-0.002	1.22	L-Jul.2015	-1.2
Other household equipment and furnishings ⁴	0.480	-2.1	-0.010	0.97	L-Apr.2015	-2.0
Clocks, lamps, and decorator items.....	0.251	-4.6	-0.012	1.78	S-Nov.2015	-6.1
Indoor plants and flowers ¹²	0.105	1.6	0.002	1.42	S-Aug.2015	0.4
Dishes and flatware ⁴	0.054	3.8	0.002	2.60	L-May 2015	3.8
Nonelectric cookware and tableware ⁴	0.071	-2.8	-0.002	1.20	L-Aug.2015	-0.9

See footnotes at end of table.

Table 7. Consumer Price Index for All Urban Consumers (CPI-U): U.S. city average, by expenditure category, January 2016, 12-month analysis table — Continued
 [1982-84=100, unless otherwise noted]

Expenditure category	Relative importance Dec. 2015	Twelve Month				
		Unadjusted percent change Jan. 2015-Jan. 2016	Unadjusted effect on All Items Jan. 2015-Jan. 2016 ¹	Standard error, median price change ²	Largest (L) or Smallest (S) unadjusted change since: ³	
					Date	Percent change
Tools, hardware, outdoor equipment and supplies ⁴ ...	0.692	-0.7	-0.005	0.69	L-Nov.2015	-0.4
Tools, hardware and supplies ⁴	0.183	-2.3	-0.004	1.14	L-Nov.2015	-1.6
Outdoor equipment and supplies ⁴	0.345	0.1	0.000	0.82	L-Nov.2015	0.2
Housekeeping supplies.....	0.885	0.2	0.002	0.45	L-Jun.2013	0.2
Household cleaning products ⁴	0.349	0.7	0.002	0.73	L-Sep.2015	1.0
Household paper products ⁴	0.239	1.1	0.003	0.95	L-Oct.2013	1.6
Miscellaneous household products ⁴	0.296	-1.2	-0.003	0.87	S-Oct.2015	-1.6
Apparel.....	3.101	-0.5	-0.016	1.10	L-Mar.2015	-0.5
Men's and boys' apparel.....	0.789	0.7	0.006	1.58	S-Nov.2015	-0.3
Men's apparel.....	0.629	0.5	0.003	1.68	S-Nov.2015	-1.4
Men's suits, sport coats, and outerwear.....	0.094	-1.9	-0.002	4.45	L-Oct.2015	-0.5
Men's furnishings.....	0.207	1.6	0.003	1.95	S-Nov.2015	-1.9
Men's shirts and sweaters ⁴	0.176	-0.7	-0.001	3.27	S-Nov.2015	-1.0
Men's pants and shorts.....	0.145	2.6	0.004	2.93	S-Nov.2015	0.5
Boys' apparel.....	0.160	1.3	0.002	3.15	-	-
Women's and girls' apparel.....	1.250	-2.1	-0.027	2.28	L-Aug.2015	-2.1
Women's apparel.....	1.041	-2.1	-0.022	2.36	L-Jul.2015	-1.9
Women's outerwear.....	0.072	-1.1	-0.002	6.49	L-Jul.2015	1.3
Women's dresses.....	0.143	-6.4	-0.009	11.82	L-Sep.2015	-1.1
Women's suits and separates ⁴	0.471	-2.0	-0.008	2.53	S-Nov.2015	-2.0
Women's underwear, nightwear, sportswear and accessories ⁴	0.346	-0.7	-0.002	2.23	S-Nov.2015	-0.9
Girls' apparel.....	0.208	-2.3	-0.005	5.34	L-Aug.2015	-0.1
Footwear.....	0.696	0.3	0.002	1.58	L-Aug.2015	1.1
Men's footwear.....	0.213	-0.5	-0.001	2.42	L-Nov.2015	-0.4
Boys' and girls' footwear.....	0.170	0.0	0.000	2.48	L-Aug.2015	2.0
Women's footwear.....	0.313	0.9	0.003	2.86	L-Aug.2015	1.5
Infants' and toddlers' apparel.....	0.157	-0.4	-0.001	2.06	S-May 2015	-0.4
Jewelry and watches ⁸	0.209	1.8	0.004	1.91	L-Jul.2013	4.9
Watches ⁸	0.077	0.8	0.001	2.38	-	-
Jewelry ⁸	0.133	2.9	0.003	2.38	L-Jul.2013	4.3
Transportation commodities less motor fuel ¹¹	6.335	0.6	0.037	0.23	L-Jun.2015	0.6
New vehicles.....	3.742	0.6	0.023	0.34	L-Aug.2015	0.6
New cars and trucks ^{4, 5}		0.6		0.32	L-Aug.2015	0.6
New cars ⁵		0.0		0.35	L-Aug.2015	0.1
New trucks ^{13, 5}		1.1		0.35	L-Sep.2015	1.1
Used cars and trucks.....	2.101	0.9	0.014	0.12	L-Jan.2014	1.5
Motor vehicle parts and equipment.....	0.396	-0.1	-0.001	0.42	L-Nov.2015	-0.1
Tires.....	0.238	-0.4	-0.001	0.58	L-Nov.2015	-0.4
Vehicle accessories other than tires ⁴	0.158	0.6	0.001	0.51	L-Sep.2015	1.3
Vehicle parts and equipment other than tires ⁵ ...		1.1		0.66	L-Sep.2015	1.5
Motor oil, coolant, and fluids ⁵		-0.1		0.81	L-Sep.2015	0.9
Medical care commodities.....	1.806	2.1	0.038	0.64	L-Nov.2015	2.5
Medicinal drugs ¹¹	1.746	2.2	0.038	0.66	L-Nov.2015	2.7
Prescription drugs.....	1.377	3.0	0.040	0.82	L-Nov.2015	3.4
Nonprescription drugs ¹¹	0.368	-0.7	-0.002	0.81	L-Nov.2015	-0.2
Medical equipment and supplies ¹¹	0.061	0.0	0.000	1.18	L-Jun.2015	0.0
Recreation commodities ¹¹	1.888	-2.4	-0.048	0.45	L-Oct.2014	-2.2
Video and audio products ¹¹	0.252	-7.8	-0.023	0.71	S-Aug.2015	-8.3
Televisions.....	0.132	-14.3	-0.019	1.27	S-May 2015	-14.5
Other video equipment ⁴	0.026	-5.9	-0.002	2.04	S-Aug.2015	-6.8
Audio equipment.....	0.064	-2.7	-0.002	1.54	S-Oct.2015	-3.0
Audio discs, tapes and other media ⁴	0.024	0.8	0.000	1.31	L-Nov.2015	0.8
Pets and pet products.....	0.594	-0.5	-0.004	0.75	L-Aug.2015	-0.5

See footnotes at end of table.

Table 7. Consumer Price Index for All Urban Consumers (CPI-U): U.S. city average, by expenditure category, January 2016, 12-month analysis table — Continued
 [1982-84=100, unless otherwise noted]

Expenditure category	Relative importance Dec. 2015	Twelve Month				
		Unadjusted percent change Jan. 2015- Jan. 2016	Unadjusted effect on All Items Jan. 2015- Jan. 2016 ¹	Standard error, median price change ²	Largest (L) or Smallest (S) unadjusted change since: ³	
					Date	Percent change
Pet food ^{4, 5}		-0.2		0.73	L-Mar.2015	0.8
Purchase of pets, pet supplies, accessories ^{4, 5}		-0.9		1.57	L-Oct.2015	-0.4
Sporting goods.....	0.446	-1.0	-0.004	0.98	S-Nov.2015	-1.4
Sports vehicles including bicycles.....	0.231	-1.4	-0.002	1.25	S-Mar.2015	-1.6
Sports equipment.....	0.206	-0.8	-0.002	1.25	—	—
Photographic equipment and supplies.....	0.038	-5.2	-0.003	2.13	L-Feb.2015	-3.5
Film and photographic supplies ^{4, 5}						
Photographic equipment ^{4, 5}		-5.5		2.32	L-Feb.2015	-4.9
Recreational reading materials.....	0.155	1.1	0.003	1.23	S-May 2015	0.8
Newspapers and magazines ⁴	0.087	0.6	0.001	1.55	L-Nov.2015	2.1
Recreational books ⁴	0.067	1.8	0.002	1.76	S-Nov.2015	1.6
Other recreational goods ⁴	0.403	-4.8	-0.018	1.31	L-Nov.2015	-4.3
Toys.....	0.328	-7.1	-0.019	1.52	L-Nov.2015	-5.7
Toys, games, hobbies and playground equipment ^{4, 5}		-5.2		1.31	—	—
Sewing machines, fabric and supplies ⁴	0.026	1.6	0.001	3.78	S-Nov.2015	-0.4
Music instruments and accessories ⁴	0.033	1.6	0.001	1.24	L-Aug.2015	2.3
Education and communication commodities ¹¹	0.650	-4.0	-0.025	0.87	S-Aug.2015	-4.6
Educational books and supplies.....	0.160	3.6	0.007	1.22	S-Jul.2014	2.4
College textbooks ^{14, 5}		4.5		1.32	S-Nov.2014	4.5
Information technology commodities ¹¹	0.490	-7.6	-0.032	1.09	S-Sep.2015	-7.6
Personal computers and peripheral equipment ⁶	0.296	-7.1	-0.020	1.27	S-Oct.2015	-7.5
Computer software and accessories ⁴	0.096	-1.3	-0.001	1.91	S-Nov.2015	-1.7
Telephone hardware, calculators, and other consumer information items ⁴	0.098	-15.9	-0.011	3.25	S-EVER	—
Alcoholic beverages.....	0.958	1.2	0.012	0.31	L-May 2015	1.2
Alcoholic beverages at home.....	0.592	0.9	0.005	0.46	L-Nov.2014	1.5
Beer, ale, and other malt beverages at home.....	0.271	1.9	0.005	0.51	L-Jan.2014	2.1
Distilled spirits at home.....	0.074	-0.5	0.000	0.63	S-Nov.2015	-0.6
Whiskey at home ⁵		-0.5		1.12	S-Oct.2015	-1.1
Distilled spirits, excluding whiskey, at home ⁵		-0.5		1.00	L-Oct.2015	-0.3
Wine at home.....	0.247	0.2	0.000	0.86	L-Oct.2015	0.2
Alcoholic beverages away from home.....	0.366	1.6	0.006	0.42	L-Oct.2015	1.7
Beer, ale, and other malt beverages away from home ^{4, 5}		1.8		0.55	L-Aug.2015	1.9
Wine away from home ^{4, 5}		0.8		0.80	—	—
Distilled spirits away from home ^{4, 5}		3.5		0.61	L-Nov.2015	3.6
Other goods ¹¹	1.563	0.7	0.012	0.40	S-Sep.2015	0.6
Tobacco and smoking products.....	0.655	3.8	0.027	0.44	L-Aug.2015	3.8
Cigarettes ⁴	0.593	3.8	0.025	0.46	L-Nov.2015	3.8
Tobacco products other than cigarettes ⁴	0.045	3.9	0.002	1.26	L-Apr.2012	4.1
Personal care products.....	0.717	-0.9	-0.007	0.79	S-Sep.2015	-1.3
Hair, dental, shaving, and miscellaneous personal care products ⁴	0.381	-1.0	-0.004	1.10	S-Sep.2015	-1.1
Cosmetics, perfume, bath, nail preparations and implements.....	0.330	-0.8	-0.003	1.18	S-Oct.2015	-1.0
Miscellaneous personal goods ⁴	0.191	-4.5	-0.009	1.06	L-Nov.2015	-3.7
Stationery, stationery supplies, gift wrap ⁵		-2.2		1.13	L-May 2015	-1.9
Infants' equipment ^{7, 5}		-1.6		1.47	L-Apr.2015	-0.7
Services less energy services.....	59.556	3.0	1.746	0.11	L-Oct.2008	3.0
Shelter.....	33.150	3.2	1.069	0.16	—	—
Rent of shelter ¹⁵	32.801	3.3	1.064	0.16	L-Oct.2007	3.3
Rent of primary residence ¹⁰	7.733	3.7	0.268	0.17	—	—
Lodging away from home ⁴	0.841	2.7	0.023	2.00	L-Nov.2015	2.8

See footnotes at end of table.

Table 7. Consumer Price Index for All Urban Consumers (CPI-U): U.S. city average, by expenditure category, January 2016, 12-month analysis table — Continued
 [1982-84=100, unless otherwise noted]

Expenditure category	Relative importance Dec. 2015	Twelve Month				
		Unadjusted percent change Jan. 2015-Jan. 2016	Unadjusted effect on All Items Jan. 2015-Jan. 2016 ¹	Standard error, median price change ²	Largest (L) or Smallest (S) unadjusted change since: ³	
					Date	Percent change
Housing at school, excluding board ^{10, 15}	0.120	2.9	0.005	0.26	S-Nov.2015	2.9
Other lodging away from home including hotels and motels.....	0.721	2.1	0.018	2.41	L-Nov.2015	2.7
Owners' equivalent rent of residences ^{10, 15}	24.227	3.2	0.772	0.16	L-Jun.2007	3.3
Owners' equivalent rent of primary residence ^{10, 15}	23.116	3.2	0.727	0.16	L-Jun.2007	3.3
Tenants' and household insurance ⁴	0.350	1.4	0.005	0.95	S-Nov.2011	1.0
Water and sewer and trash collection services ⁴	1.157	3.9	0.047	0.47	L-Nov.2015	4.0
Water and sewerage maintenance ¹⁰	0.870	4.4	0.041	0.55	L-Nov.2015	4.6
Garbage and trash collection ¹³	0.287	2.2	0.006	0.61	L-Aug.2014	2.2
Household operations ⁴	0.849	3.2	0.027	0.38	S-Nov.2015	2.6
Domestic services ⁴	0.284	0.9	0.002	0.42	L-Nov.2015	0.9
Gardening and lawncare services ⁴						
Moving, storage, freight expense ⁴	0.114	10.6	0.013	1.30	S-Nov.2015	7.1
Repair of household items ⁴	0.087	1.9	0.001	0.70	S-Jun.2014	1.7
Medical care services.....	6.569	3.3	0.198	0.24	L-Apr.2013	3.4
Professional services.....	3.131	2.1	0.064	0.30	L-Jul.2015	2.1
Physicians' services ¹⁰	1.681	2.3	0.036	0.46	S-Oct.2015	1.9
Dental services ¹⁰	0.812	2.7	0.022	0.54	S-Oct.2015	2.5
Eyeglasses and eye care ⁸	0.324	1.2	0.004	0.74	L-Jan.2015	1.4
Services by other medical professionals ^{10, 8}	0.314	0.5	0.002	0.56	L-Oct.2015	0.7
Hospital and related services.....	2.459	4.3	0.096	0.41	L-Nov.2015	4.4
Hospital services ^{10, 16}	2.190	4.6	0.089	0.46	L-Nov.2015	4.7
Inpatient hospital services ^{10, 16, 5}		4.8		0.91	L-Oct.2015	5.2
Outpatient hospital services ^{10, 8, 5}		3.4		0.63	—	—
Nursing homes and adult day services ^{10, 16}	0.191	3.0	0.005	0.44	S-Apr.2015	2.9
Care of invalids and elderly at home ⁷	0.077	2.1	0.003	0.74	L-Jun.2011	2.2
Health insurance ⁷	0.979	4.8	0.038	0.25	L-Apr.2013	5.3
Transportation services.....	5.876	2.7	0.154	0.31	L-Jun.2014	3.2
Leased cars and trucks ¹⁴	0.570	0.0	0.000	1.26	S-Nov.2015	-0.7
Car and truck rental ⁴	0.095	-7.8	-0.005	2.42	L-Nov.2015	-4.4
Motor vehicle maintenance and repair.....	1.167	1.6	0.018	0.33	—	—
Motor vehicle body work.....	0.057	1.4	0.001	0.68	S-Sep.2015	0.7
Motor vehicle maintenance and servicing.....	0.677	1.1	0.006	0.44	L-Oct.2015	1.1
Motor vehicle repair ⁴	0.391	1.9	0.012	0.53	S-Oct.2015	1.6
Motor vehicle insurance.....	2.379	5.4	0.126	0.59	S-Oct.2015	4.7
Motor vehicle fees ⁴	0.530	2.8	0.016	0.45	L-Sep.2015	2.9
State motor vehicle registration and license fees ^{10, 4}	0.285	3.1	0.010	0.66	L-Sep.2010	4.4
Parking and other fees ⁴	0.234	2.3	0.006	0.47	L-Sep.2015	2.8
Parking fees and tolls ^{4, 5}		2.8		0.63	L-Oct.2015	2.9
Automobile service clubs ^{4, 5}		0.4		0.75	S-Oct.2015	0.4
Public transportation.....	1.135	-0.1	-0.001	0.75	L-Jul.2014	0.0
Airline fare.....	0.669	-1.7	-0.012	0.98	L-Jul.2014	-0.2
Other intercity transportation.....	0.180	3.2	0.005	1.86	L-Oct.2015	4.1
Intercity bus fare ^{6, 5}						
Intercity train fare ^{6, 5}		-1.0		1.59	L-Oct.2015	0.8
Ship fare ^{4, 5}		4.9		2.34	S-Aug.2015	3.5
Intracity transportation.....	0.282	2.3	0.006	0.22	S-Oct.2015	2.3
Intracity mass transit ^{11, 5}		2.8		0.59	—	—
Recreation services ¹¹	3.846	2.3	0.087	0.52	S-Sep.2015	2.3
Video and audio services ¹¹	1.603	1.7	0.027	0.39	S-Nov.2015	1.7
Cable and satellite television and radio service ¹³	1.497	1.7	0.025	0.40	S-Oct.2015	1.4

See footnotes at end of table.

Table 7. Consumer Price Index for All Urban Consumers (CPI-U): U.S. city average, by expenditure category, January 2016, 12-month analysis table — Continued
 [1982-84=100, unless otherwise noted]

Expenditure category	Relative importance Dec. 2015	Twelve Month				
		Unadjusted percent change Jan. 2015-Jan. 2016	Unadjusted effect on All Items Jan. 2015-Jan. 2016 ¹	Standard error, median price change ²	Largest (L) or Smallest (S) unadjusted change since: ³	
					Date	Percent change
Video discs and other media, including rental of video and audio ⁴	0.107	1.9	0.002	1.79	S-Nov.2015	-0.1
Video discs and other media ^{4, 5}		0.2		2.46	S-Nov.2015	-2.3
Rental of video or audio discs and other media ^{4, 5}		1.6		0.99	S-Dec.2014	1.4
Pet services including veterinary ⁴	0.368	3.7	0.015	0.44	S-Jul.2015	3.6
Pet services ^{4, 5}		2.7		1.08	S-Jul.2015	2.2
Veterinarian services ^{4, 5}		4.1		0.58	S-Jul.2015	3.8
Photographers and film processing ⁴	0.050	1.9	0.001	1.18	L-Oct.2015	2.3
Photographer fees ^{4, 5}		1.1		0.77	—	—
Film processing ^{4, 5}		1.9		1.23	S-Aug.2015	1.7
Other recreation services ⁴	1.824	2.5	0.044	1.03	S-Jul.2015	2.5
Club dues and fees for participant sports and group exercises ⁴	0.639	-0.7	-0.004	1.34	S-Mar.2015	-0.8
Admissions.....	0.638	5.1	0.032	1.31	L-May 2007	5.2
Admission to movies, theaters, and concerts ^{4, 5}		3.5		0.98	S-Oct.2015	2.6
Admission to sporting events ^{4, 5}		8.8		1.47	L-Oct.2015	8.8
Fees for lessons or instructions ⁸	0.224	3.2	0.007	0.60	—	—
Education and communication services ¹¹	6.495	1.9	0.122	0.19	—	—
Tuition, other school fees, and childcare.....	3.028	3.3	0.104	0.31	S-Feb.2015	3.3
College tuition and fees.....	1.803	3.1	0.058	0.45	S-EVER	—
Elementary and high school tuition and fees.....	0.311	3.8	0.014	0.42	L-Nov.2015	3.8
Child care and nursery school ¹²	0.741	3.7	0.027	0.52	S-Mar.2015	3.4
Technical and business school tuition and fees ⁴	0.042	1.5	0.001	0.48	L-Jul.2015	1.6
Postage and delivery services ⁴	0.138	0.3	0.000	0.35	L-Jan.2015	3.4
Postage.....	0.131	0.6	0.001	0.38	L-Jan.2015	3.6
Delivery services ⁴	0.007	-2.1	0.000	0.53	S-Nov.2009	-6.6
Telephone services ⁴	2.588	0.9	0.023	0.30	L-Jun.2012	0.9
Wireless telephone services ⁴	1.852	0.4	0.007	0.39	L-Mar.2009	0.4
Land-line telephone services ¹¹	0.736	2.0	0.017	0.42	S-May 2015	1.9
Internet services and electronic information providers ⁴	0.728	-0.9	-0.006	0.75	L-Jun.2015	-0.6
Other personal services ¹¹	1.613	2.4	0.042	0.29	S-May 2015	1.9
Personal care services.....	0.610	2.7	0.017	0.43	L-Nov.2015	3.1
Haircuts and other personal care services ⁴	0.610	2.7	0.017	0.43	L-Nov.2015	3.1
Miscellaneous personal services.....	1.003	2.2	0.025	0.40	S-May 2015	2.2
Legal services ⁸	0.241	2.3	0.008	0.66	S-Aug.2015	1.7
Funeral expenses ⁸	0.145	2.3	0.004	0.63	S-Jul.2015	2.0
Laundry and dry cleaning services ⁴	0.266	3.0	0.008	0.42	—	—
Apparel services other than laundry and dry cleaning ⁴	0.027	1.9	0.001	0.68	S-Nov.2015	1.9
Financial services ⁸	0.227	1.0	0.002	1.01	S-Jun.2014	1.0
Checking account and other bank services ^{4, 5}		0.5		0.60	—	—
Tax return preparation and other accounting fees ^{4, 5}		1.3		1.40	S-Oct.2013	1.3
Special aggregate indexes						
All items less food.....	85.985	1.5	1.252	0.09	L-Aug.2014	1.5
All items less shelter.....	66.850	0.5	0.304	0.10	L-Nov.2014	0.5
All items less food and shelter.....	52.834	0.3	0.183	0.12	L-Oct.2014	0.5
All items less food, shelter, and energy.....	46.018	1.5	0.659	0.13	L-Mar.2013	1.6
All items less food, shelter, energy, and used cars and trucks.....	43.918	1.5	0.645	0.14	L-Apr.2013	1.5
All items less medical care.....	91.625	1.2	1.137	0.08	L-Nov.2014	1.2

See footnotes at end of table.

Table 7. Consumer Price Index for All Urban Consumers (CPI-U): U.S. city average, by expenditure category, January 2016, 12-month analysis table — Continued
 [1982-84=100, unless otherwise noted]

Expenditure category	Relative importance Dec. 2015	Twelve Month				
		Unadjusted percent change Jan. 2015-Jan. 2016	Unadjusted effect on All Items Jan. 2015-Jan. 2016 ¹	Standard error, median price change ²	Largest (L) or Smallest (S) unadjusted change since: ³	
					Date	Percent change
All items less energy.....	93.184	2.0	1.849	0.08	L-Oct.2014	2.0
Commodities.....	36.856	-0.5	-0.192	0.13	L-Nov.2014	-0.5
Commodities less food, energy, and used cars and trucks.....	17.512	-0.2	-0.033	0.27	L-Apr.2015	-0.2
Commodities less food.....	22.841	-1.4	-0.313	0.19	L-Oct.2014	-1.2
Commodities less food and beverages.....	21.883	-1.5	-0.324	0.20	L-Oct.2014	-1.3
Services.....	63.144	2.5	1.564	0.10	—	—
Services less rent of shelter ¹⁵	30.343	1.7	0.501	0.12	—	—
Services less medical care services.....	56.575	2.4	1.366	0.11	—	—
Durables.....	9.647	-0.6	-0.049	0.19	L-Oct.2013	-0.6
Nondurables.....	27.209	-0.5	-0.143	0.16	L-Nov.2014	-0.1
Nondurables less food.....	13.194	-1.9	-0.264	0.26	L-Oct.2014	-1.1
Nondurables less food and beverages.....	12.236	-2.2	-0.276	0.28	L-Oct.2014	-1.2
Nondurables less food, beverages, and apparel.....	9.135	-2.7	-0.260	0.17	L-Oct.2014	-1.8
Nondurables less food and apparel.....	10.093	-2.4	-0.248	0.15	L-Oct.2014	-1.6
Housing.....	42.235	2.1	0.890	0.13	—	—
Education and communication ⁴	7.145	1.4	0.097	0.20	—	—
Education ⁴	3.189	3.3	0.112	0.30	S-Dec.2014	3.3
Communication ⁴	3.956	-0.4	-0.015	0.25	L-Aug.2014	-0.1
Information and information processing ⁴	3.818	-0.4	-0.015	0.26	L-Aug.2014	-0.2
Information technology, hardware and services ¹⁷	1.230	-3.4	-0.039	0.66	L-May 2015	-3.2
Recreation ⁴	5.734	0.7	0.039	0.35	—	—
Video and audio ⁴	1.856	0.2	0.004	0.36	S-Oct.2015	-0.1
Pets, pet products and services ⁴	0.962	1.1	0.011	0.48	L-Sep.2015	1.1
Photography ⁴	0.089	-1.5	-0.002	1.30	L-Feb.2015	-0.9
Food and beverages.....	14.973	0.9	0.133	0.12	L-Nov.2015	1.2
Domestically produced farm food.....	6.898	-0.4	-0.032	0.20	—	—
Other services.....	11.954	2.1	0.251	0.20	S-Nov.2015	2.1
Apparel less footwear.....	2.405	-0.8	-0.018	1.32	L-Oct.2014	0.2
Fuels and utilities.....	4.925	-3.3	-0.179	0.23	—	—
Household energy.....	3.768	-5.5	-0.226	0.29	S-Oct.2009	-8.5
Medical care.....	8.375	3.0	0.236	0.24	L-Oct.2015	3.0
Transportation.....	15.259	-0.4	-0.060	0.16	L-Aug.2014	-0.4
Private transportation.....	14.125	-0.4	-0.058	0.16	L-Aug.2014	-0.3
New and used motor vehicles ⁴	6.604	0.5	0.033	0.25	L-Jun.2015	0.6
Utilities and public transportation.....	9.965	-0.9	-0.087	0.17	S-Sep.2015	-1.2
Household furnishings and operations.....	4.160	0.0	0.000	0.25	L-Apr.2015	0.0
Other goods and services.....	3.177	1.6	0.054	0.25	S-Aug.2015	1.6
Personal care.....	2.522	1.0	0.027	0.31	S-Apr.2015	1.0

¹ The 'effect' of an item category is a measure of that item's contribution to the All items price change. For example, if the Food index had an effect of 0.40, and the All items index rose 1.2 percent, then the increase in food prices contributed 0.40 / 1.2, or 33.3 percent, to that All items increase. Said another way, had food prices been unchanged for that year the change in the All items index would have been 1.2 percent minus 0.40, or 0.8 percent. Effects can be negative as well. For example, if the effect of food was a negative 0.1, and the All items index rose 0.5 percent, the All items index actually would have been 0.1 percent higher (or 0.6 percent) had food prices been unchanged. Since food prices fell while prices overall were rising, the contribution of food to the All items price change was negative (in this case, -0.1 / 0.5, or minus 20 percent).

² A statistic's margin of error is often expressed as its point estimate plus or minus two standard errors. For example, if a CPI category rose 2.6 percent, and its standard error was 0.25 percent, the margin of error on this item's 12-month percent change would be 2.6 percent, plus or minus 0.5 percent.

³ If the current 12-month percent change is greater than the previous published 12-month percent change, then this column identifies the closest prior month with a 12-month percent change as (L)arge as or (L)arger than the current 12-month change. If the current 12-month percent change is smaller than the previous published 12-month percent change, the most recent month with a change as (S)mall or (S)maller than the current month change is identified. If the current and previous published 12-month percent changes are equal, a dash will appear. Standard numerical comparison is used. For example, 2.0% is greater than 0.6%, -4.4% is less than -2.0%, and -2.0% is less than 0.0%. Note that a (L)arger change can be a smaller decline, for example, a -0.2% change is larger than a -0.4% change, but still represents a decline in the price index. Likewise, (S)maller changes can be increases, for example, a 0.6% change is smaller than 0.8%, but still represents an increase in the price index. In this context, a -0.2% change is considered to be smaller than a 0.0% change.

⁴ Indexes on a December 1997=100 base.

⁵ Special indexes based on a substantially smaller sample. These series do not contribute to the all items index aggregation and therefore do not have a relative importance or effect.

⁶ Indexes on a December 2007=100 base.

⁷ Indexes on a December 2005=100 base.

⁸ Indexes on a December 1986=100 base.

⁹ Indexes on a December 1993=100 base.

¹⁰ This index series was calculated using a Laspeyres estimator. All other item stratum index series were calculated using a geometric means estimator.

¹¹ Indexes on a December 2009=100 base.

¹² Indexes on a December 1990=100 base.

¹³ Indexes on a December 1983=100 base.

¹⁴ Indexes on a December 2001=100 base.

¹⁵ Indexes on a December 1982=100 base.

¹⁶ Indexes on a December 1996=100 base.

¹⁷ Indexes on a December 1988=100 base.

NOTE: Index applies to a month as a whole, not to any specific date.