

Transmission of material in this release is embargoed until
8:30 a.m. (EST) Wednesday, December 15, 2010

USDL-10-1726

Technical information: (202) 691-7000 • Reed.Steve@bls.gov • www.bls.gov/cpi
Media Contact: (202) 691-5902 • PressOffice@bls.gov

CONSUMER PRICE INDEX – NOVEMBER 2010

The Consumer Price Index for All Urban Consumers (CPI-U) increased 0.1 percent in November on a seasonally adjusted basis, the U.S. Bureau of Labor Statistics reported today. Over the last 12 months, the all items index increased 1.1 percent before seasonal adjustment.

The indexes for food, energy, and all items less food and energy all increased slightly in November. The index for food at home rose in November after being unchanged in October, with the indexes for eggs and nonalcoholic beverages both rising notably. Although the index for gasoline rose, the index for household energy declined and the increase in the energy index was the smallest in five months.

The index for all items less food and energy rose in November after being unchanged the previous three months. Increases in the indexes for shelter and airline fares accounted for most of the rise, while the indexes for new vehicles, used cars and trucks, and household furnishings and operations all declined.

Over the last 12 months, the index for all items less food and energy has risen 0.8 percent. The energy index has risen 3.9 percent over that span with the gasoline index up 7.3 percent but the household energy index down 0.2 percent. The food index has risen 1.5 percent, with the food at home index up 1.7 percent.

Chart 1. One-month percent change in CPI for All Urban Consumers (CPI-U), seasonally adjusted, Nov. 2009 - Nov. 2010
Percent change

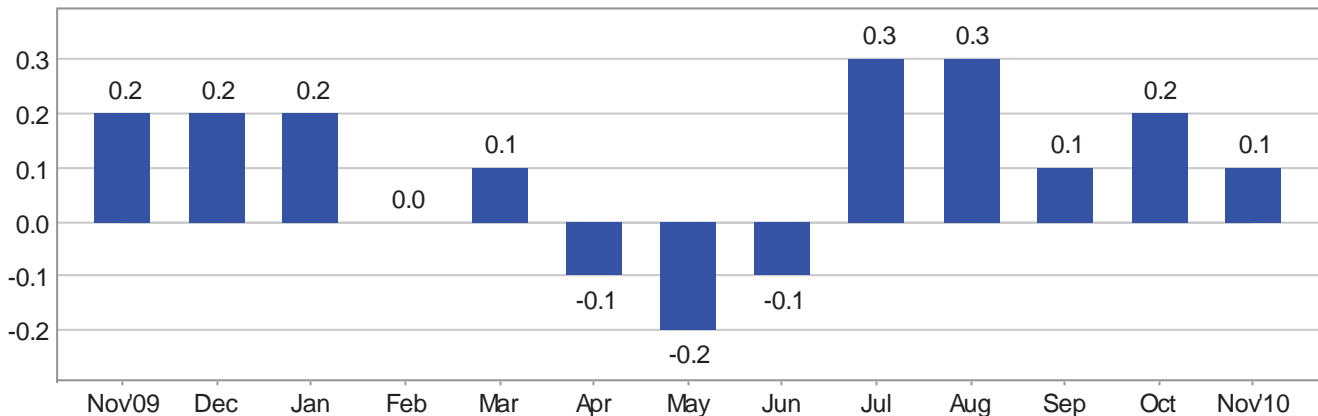


Chart 2. 12-month percent change in CPI for All Urban Consumers (CPI-U), not seasonally adjusted, Nov. 2009 - Nov. 2010

Percent change

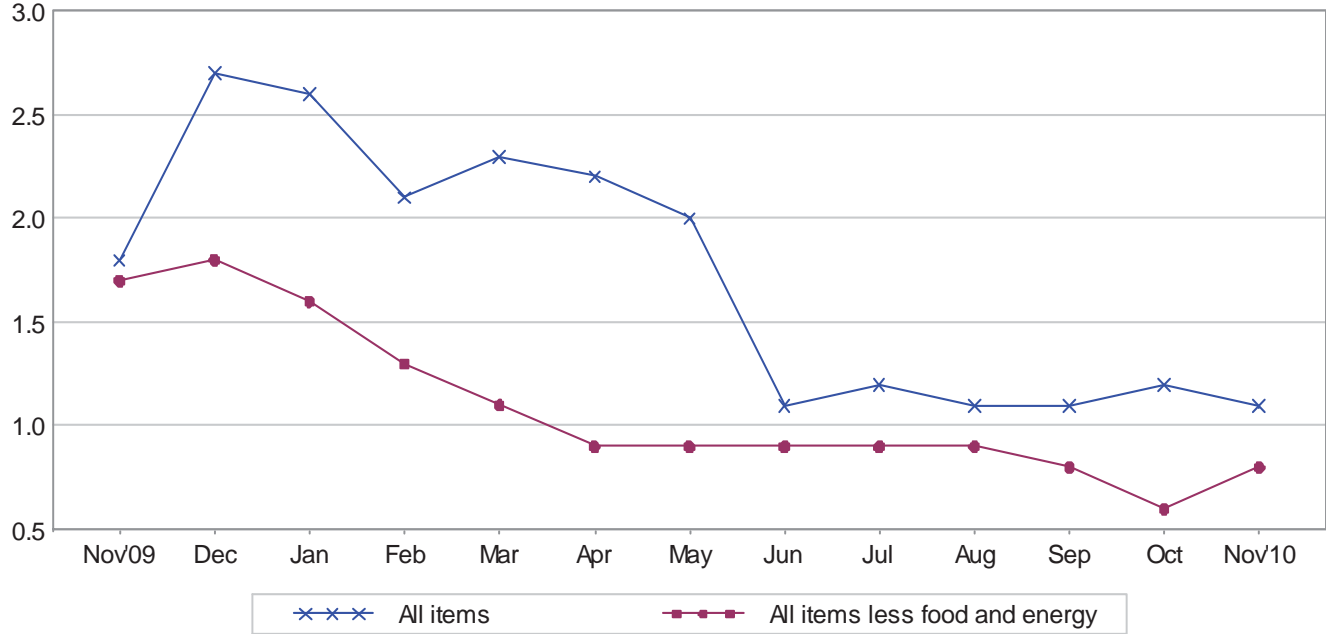


Table A. Percent changes in CPI for All Urban Consumers (CPI-U): U.S. city average

	Seasonally adjusted changes from preceding month							Un-adjusted 12-mos. ended Nov. 2010
	May 2010	June 2010	July 2010	Aug. 2010	Sep. 2010	Oct. 2010	Nov. 2010	
All items	-2	-1	.3	.3	.1	.2	.1	1.1
Food0	.0	-1	.2	.3	.1	.2	1.5
Food at home0	-1	-1	.0	.3	.0	.3	1.7
Food away from home ¹1	.1	.0	.3	.3	.1	.1	1.3
Energy	-2.9	-2.9	2.6	2.3	.7	2.6	.2	3.9
Energy commodities	-4.8	-4.1	4.0	3.8	1.8	4.4	.8	7.7
Gasoline (all types)	-5.2	-4.5	4.6	3.9	1.6	4.6	.7	7.3
Fuel oil ¹	-1.4	-3.2	-1.6	.9	.8	4.7	4.2	11.1
Energy services	-5	-1.6	.8	.4	-8	.2	-7	-1.0
Electricity	-4	-2.2	.5	.2	-3	.4	.9	.3
Utility (piped) gas service	-1.0	.6	1.7	1.1	-2.3	-4	-5.7	-4.8
All items less food and energy1	.2	.1	.0	.0	.0	.1	.8
Commodities less food and energy								
commodities1	.2	.2	.1	-2	-2	-1	-2
New vehicles1	.1	.1	.3	.1	-2	-4	-4
Used cars and trucks6	.9	.8	.7	-7	-9	-5	6.0
Apparel2	.8	.6	-1	-6	-3	.2	-8
Medical care commodities ¹1	.0	-2	.2	.3	.1	.2	2.7
Services less energy services1	.1	.1	.0	.1	.1	.2	1.1
Shelter1	.1	.1	.0	.0	.1	.1	.2
Transportation services4	.0	.0	.1	.3	.3	.5	2.9
Medical care services0	.4	.0	.2	.8	.2	.1	3.4

¹ Not seasonally adjusted.

Consumer Price Index Data for November 2010

Food

The food index rose 0.2 percent in November after a 0.1 percent increase in October. The index for food away from home rose 0.1 percent while the food at home index rose 0.3 percent. Among the six major grocery store food groups that comprise the food at home index, the index for nonalcoholic beverages posted the largest increase, at 0.8 percent. The index for meats, poultry, fish, and eggs rose 0.5 percent, due mostly to a 6.6 percent increase in the index for eggs. The index for cereals and bakery products rose 0.4 percent, and the index for other food at home advanced 0.1 percent. The index for dairy and related products, which rose 1.1 percent in October, was unchanged in November. The only major grocery store food group index to decline in November was fruits and vegetables, which fell 0.2 percent after a 0.7 percent decline in October. Within that group, the index for fresh fruits rose 2.0 percent but the fresh vegetables index fell 2.0 percent. Over the past year, the index for meats, poultry, fish, and eggs has risen 5.8 percent and the dairy and related products index has increased 3.8 percent. The other grocery store food groups posted much smaller changes.

Energy

The energy index rose 0.2 percent in November after a 2.6 percent increase in October. The gasoline index, which rose 4.6 percent in October, increased 0.7 percent in November. This was its fifth consecutive monthly increase, but the smallest of the five. (Before seasonal adjustment, gasoline prices rose 2.0 percent in November.) In contrast, the index for household energy declined in November, falling 0.4 percent. The index for natural gas fell 5.7 percent and more than offset a 0.9 percent increase in the index for electricity and a 4.2 percent increase in the index for fuel oil. The natural gas index has declined 4.8 percent over the past year, though the other energy components have increased.

All items less food and energy

The index for all items less food and energy rose 0.1 percent in November, its first increase since July. The index for shelter rose 0.1 percent in November, the same increase as the previous month. The rent index rose 0.2 percent, its largest increase since March 2009, while the index for owners' equivalent rent rose 0.1 percent and the lodging away from home index declined 1.2 percent. The index for airline fares increased 3.0 percent in November, its largest increase in over two years. The medical care index rose 0.1 percent in November, the same increase as in October, with the indexes for medical care commodities rising 0.2 percent and the medical care services index increasing 0.1 percent. Several indexes turned up in November after declining in recent months. The index for personal care rose 0.5 percent in November following a 0.3 percent decrease in October, and the apparel index rose 0.2 percent after declining in each of the three previous months. Partially offsetting these increases were declines in the index for new vehicles, which fell 0.4 percent in November, and used cars and trucks, which fell 0.5 percent. The index for household furnishings and operations also declined, falling 0.2 percent.

The index for all items less food and energy increased 0.8 percent over the last 12 months. The shelter index has gone up 0.2 percent over that time period, the medical care index has risen 3.2 percent, and the index for used cars and trucks has increased 6.0 percent. In contrast, the indexes for household furnishings and operations has declined, falling 2.5 percent, and the new vehicles index has fallen 0.4 percent. The apparel and recreation indexes have decreased as well, falling 0.8 percent and 0.9 percent, respectively.

Not seasonally adjusted CPI measures

The Consumer Price Index for All Urban Consumers (CPI-U) increased 1.1 percent over the last 12 months to an index level of 218.803 (1982-84=100). For the month, the index was unchanged prior to seasonal adjustment.

The Consumer Price Index for Urban Wage Earners and Clerical Workers (CPI-W) increased 1.3 percent over the last 12 months to an index level of 214.750 (1982-84=100). For the month, the index rose 0.1 percent prior to seasonal adjustment.

The Chained Consumer Price Index for All Urban Consumers (C-CPI-U) increased 1.0 percent over the last 12 months. For the month, the index was unchanged on a not seasonally adjusted basis. Please note that the indexes for the post-2008 period are subject to revision.

The Consumer Price Index for December 2010 is scheduled to be released on Friday, January 14, 2011, at 8:30 a.m. (EST). Releases for the remainder of 2011 are scheduled on the following dates:

Feb. 17	Aug. 18
Mar. 17	Sep. 15
Apr. 15	Oct. 19
May 13	Nov. 16
June 15	Dec. 16
July 15	

Effective with the release of CPI data for January 2011 scheduled for Thursday, February 17, 2011, the following series will be re-titled:

- Recreation services will become Other recreation services
- Gas (piped) and electricity will become Energy services
- Canned fish and seafood will become Shelf stable fish and seafood

The Recreation services index does not include all services under the major group Recreation, specifically video and audio related services, pet services, and photography and film services are excluded. The new title, Other recreation services, will reflect these exclusions.

Gas (piped) and electricity has been presented as Energy services in Table A of the CPI News Release since August 2009. At that time, the format text of the News Release was updated to focus on Food, Energy, and All items less food and energy instead of the major groups (Food, Housing, Apparel, Transportation, Medical care, Education and communication, Recreation, and Other goods and services). The title will be changed in the remainder of the publication tables in January 2011 to improve consistency.

The title for Canned fish and seafood will change to Shelf stable fish and seafood to better reflect current packaging methods.

Facilities for Sensory Impaired

Information from this release will be made available to sensory impaired individuals upon request. Voice phone: 202-691-5200, Federal Relay Services: 1-800-877-8339.

Brief Explanation of the CPI

The Consumer Price Index (CPI) is a measure of the average change in prices over time of goods and services purchased by households. The Bureau of Labor Statistics publishes CPIs for two population groups: (1) the CPI for Urban Wage Earners and Clerical Workers (CPI-W), which covers households of wage earners and clerical workers that comprise approximately 32 percent of the total population and (2) the CPI for All Urban Consumers (CPI-U) and the Chained CPI for All Urban Consumers (C-CPI-U), which cover approximately 87 percent of the total population and include in addition to wage earners and clerical worker households, groups such as professional, managerial, and technical workers, the self-employed, short-term workers, the unemployed, and retirees and others not in the labor force.

The CPIs are based on prices of food, clothing, shelter, and fuels, transportation fares, charges for doctors' and dentists' services, drugs, and other goods and services that people buy for day-to-day living. Prices are collected each month in 87 urban areas across the country from about 4,000 housing units and approximately 25,000 retail establishments-department stores, supermarkets, hospitals, filling stations, and other types of stores and service establishments. All taxes directly associated with the purchase and use of items are included in the index. Prices of fuels and a few other items are obtained every month in all 87 locations. Prices of most other commodities and services are collected every month in the three largest geographic areas and every other month in other areas. Prices of most goods and services are obtained by personal visits or telephone calls of the Bureau's trained representatives.

In calculating the index, price changes for the various items in each location are averaged together with weights, which represent their importance in the spending of the appropriate population group. Local data are then combined to obtain a U.S. city average. For the CPI-U and CPI-W separate indexes are also published by size of city, by region of the country, for cross-classifications of regions and population-size classes, and for 27 local areas. Area indexes do not measure differences in the level of prices among cities; they only measure the average change in prices for each area since the base period. For the C-CPI-U data are issued only at the national level. It is important to note that the CPI-U and CPI-W are considered final when released, but the C-CPI-U is issued in preliminary form and subject to two annual revisions.

The index measures price change from a designed reference date. For the CPI-U and the CPI-W the reference base is 1982-84 equals 100.0. The reference base for the C-CPI-U is December 1999 equals 100. An increase of 16.5 percent from the reference base, for example, is shown as 116.5. This change can also be expressed in dollars as follows: the price of a base period market basket of goods and services in the CPI has risen from \$10 in 1982-84 to \$11.65.

For further details visit the CPI home page on the Internet at <http://www.bls.gov/cpi/> or contact our CPI Information and Analysis Section on (202) 691-7000.

Note on Sampling Error in the Consumer Price Index

The CPI is a statistical estimate that is subject to sampling error because it is based upon a sample of retail prices and not the complete universe of all prices. BLS calculates and publishes estimates of the 1-month, 2-month, 6-month and 12-month percent change standard errors annually, for the CPI-U. These standard error estimates can be used to construct confidence intervals for hypothesis testing. For example, the estimated standard error of the 1 month percent change is 0.04 percent for the U.S. All Items Consumer Price Index. This means that if we repeatedly sample from the universe of all retail prices using the same methodology, and estimate a percentage change for each sample, then 95% of these estimates would be within 0.08 percent of the 1 month percentage change based on all retail prices. For example, for a 1-month change of 0.2 percent in the All Items CPI for All Urban Consumers, we are 95 percent confident that the actual percent change based on all retail prices would fall between 0.12 and 0.28 percent. For the latest data, including information on how to use the estimates of standard error, see “Variance Estimates for Price Changes in the Consumer Price Index, January-December 2009”. These data are available on the CPI home page (<http://www.bls.gov/cpi>), or by using the following link <http://www.bls.gov/cpi/cpivar2009.pdf>

Calculating Index Changes

Movements of the indexes from one month to another are usually expressed as percent changes rather than changes in index points, because index point changes are affected by the level of the index in relation to its base period while percent changes are not. The example below illustrates the computation of index point and percent changes.

Percent changes for 3-month and 6-month periods are expressed as annual rates and are computed according to the standard formula for compound growth rates. These data indicate what the percent change would be if the current rate were maintained for a 12-month period.

Index Point Change

CPI	202.416
Less previous index	201.800
Equals index point change	.616

Percent Change

Index point difference	.616
Divided by the previous index	201.800
Equals	0.003
Results multiplied by one hundred	0.003x100
Equals percent change	0.3

Regions Defined

The states in the four regions shown in Tables 3 and 6 are listed below.

The Northeast--Connecticut, Maine, Massachusetts, New Hampshire, New York, New Jersey, Pennsylvania, Rhode Island, and Vermont.

The Midwest--Illinois, Indiana, Iowa, Kansas, Michigan, Minnesota, Missouri, Nebraska, North Dakota, Ohio, South Dakota, and Wisconsin.

The South--Alabama, Arkansas, Delaware, Florida, Georgia, Kentucky, Louisiana, Maryland, Mississippi, North Carolina, Oklahoma, South Carolina, Tennessee, Texas, Virginia, West Virginia, and the District of Columbia.

The West--Alaska, Arizona, California, Colorado, Hawaii, Idaho, Montana, Nevada, New Mexico, Oregon, Utah, Washington, and Wyoming.

A Note on Seasonally Adjusted and Unadjusted Data

Because price data are used for different purposes by different groups, the Bureau of Labor Statistics publishes seasonally adjusted as well as unadjusted changes each month.

For analyzing general price trends in the economy, seasonally adjusted changes are usually preferred since they eliminate the effect of changes that normally occur at the same time and in about the same magnitude every year--such as price movements resulting from changing climatic conditions, production cycles, model changeovers, holidays, and sales.

The unadjusted data are of primary interest to consumers concerned about the prices they actually pay. Unadjusted data also are used extensively for escalation purposes. Many collective bargaining contract agreements and pension plans, for example, tie compensation changes to the Consumer Price Index before adjustment for seasonal variation.

Seasonal factors used in computing the seasonally adjusted indexes are derived by the X-12-ARIMA Seasonal Adjustment Method. Seasonally adjusted indexes and seasonal factors are computed annually. Each year, the last 5 years of seasonally adjusted data are revised. Data from January 2005 through December 2009 were replaced in January 2010. Exceptions to the usual revision schedule were: the updated seasonal data at the end of 1977 replaced data from 1967 through 1977; and, in January 2002, dependently seasonally adjusted series were revised for January 1987-December 2001 as a result of a change in the aggregation weights for dependently adjusted series. For further information, please see "Aggregation of Dependently Adjusted Seasonally Adjusted Series," in the October 2001 issue of the CPI Detailed Report.

The seasonal movement of all items and 54 other aggregations is derived by combining the seasonal movement of 73 selected components. Each year the seasonal status of every series is reevaluated based upon certain statistical criteria. If any of the 73 components change their seasonal adjustment status from seasonally adjusted to not seasonally adjusted, not seasonally adjusted data will be used in the aggregation of the dependent series for the last 5 years, but the seasonally adjusted indexes will be used before that period. Note: 46 of the 73 components are seasonally adjusted for 2010.

Seasonally adjusted data, including the all items index levels, are subject to revision for up to five years after their original release. For this reason, BLS advises against the use of these data in escalation agreements.

Effective with the calculation of the seasonal factors for 1990, the Bureau of Labor Statistics has used an enhanced seasonal adjustment procedure called Intervention Analysis Seasonal Adjustment for some CPI series. Intervention Analysis Seasonal Adjustment allows for better estimates of seasonally adjusted data. Extreme values and/or sharp movements which might distort the seasonal pattern are estimated and removed from the data prior to calculation of seasonal factors. Beginning with the calculation of seasonal factors for 1996, X-12-ARIMA software was used for Intervention Analysis Seasonal Adjustment.

For the seasonal factors introduced in January 2010, BLS adjusted 30 series using Intervention Analysis Seasonal Adjustment, including selected food and beverage items, motor fuels, electricity and vehicles. For example, this procedure was used for the Motor fuel series to offset the effects of events such as damage to oil refineries from Hurricane Katrina.

For a complete list of Intervention Analysis Seasonal Adjustment series and explanations, please refer to the article "Intervention Analysis Seasonal Adjustment", located on our website at <http://www.bls.gov/cpi/cpisapage.htm>.

For additional information on seasonal adjustment in the CPI, please write to the Bureau of Labor Statistics, Division of Consumer Prices and Price Indexes, Washington, DC 20212 or contact David Levin at (202) 691-6968, or by e-mail at Levin.David@bls.gov. If you have general questions about the CPI, please call our information staff at (202) 691-7000.

Table 1. Consumer Price Index for All Urban Consumers (CPI-U): U.S. city average, by expenditure category and commodity and service group

(1982-84=100, unless otherwise noted)

CPI-U Expenditure category	Relative importance, December 2009	Unadjusted indexes		Unadjusted percent change to Nov. 2010 from—		Seasonally adjusted percent change from—		
		Oct. 2010	Nov. 2010	Nov. 2009	Oct. 2010	Aug. to Sep.	Sep. to Oct.	Oct. to Nov.
All items	100.000	218.711	218.803	1.1	0.0	0.1	0.2	0.1
All items (1967=100)	-	655.162	655.438	-	-	-	-	-
Food and beverages	14.795	221.005	220.991	1.5	.0	.3	.1	.2
Food	13.738	220.616	220.617	1.5	.0	.3	.1	.2
Food at home	7.801	216.698	216.538	1.7	-1	.3	.0	.3
Cereals and bakery products	1.108	249.890	249.944	-3	.0	.8	-2	.4
Meats, poultry, fish, and eggs	1.745	212.170	212.957	5.8	.4	.9	.6	.5
Dairy and related products ¹820	201.291	201.277	3.8	.0	.2	1.1	.0
Fruits and vegetables	1.153	270.200	269.917	.0	-1	.1	-7	-2
Nonalcoholic beverages and beverage materials952	161.313	161.427	.0	.1	.0	-5	.8
Other food at home	2.023	191.311	190.152	.3	-6	.0	-2	.1
Sugar and sweets295	202.962	200.586	1.2	-1.2	1.1	.7	-1.4
Fats and oils232	203.614	202.375	3.0	-6	.1	.5	.8
Other foods	1.496	203.990	202.988	-3	-5	-2	-4	.3
Other miscellaneous foods ^{1 2}439	121.698	120.623	-5	-9	.3	-3	-9
Food away from home ¹	5.937	227.287	227.512	1.3	.1	.3	.1	.1
Other food away from home ^{1 2}326	160.036	160.392	2.1	.2	.3	.0	.2
Alcoholic beverages	1.056	224.705	224.490	.9	-1	.2	.2	.0
Housing	41.960	216.100	215.830	.0	-1	-1	.1	.0
Shelter	32.289	248.646	248.738	.2	.0	.0	.1	.1
Rent of primary residence ³	5.966	249.618	250.317	.6	.3	.1	.1	.2
Lodging away from home ²769	133.580	126.704	1.0	-5.1	-2	-1.0	-1.2
Owners' equivalent rent of residences ^{3 4}	25.206	256.823	257.202	.2	.1	.0	.1	.1
Owners' equivalent rent of primary residence ^{3 4}	23.593	256.817	257.194	.2	.1	.0	.1	.1
Tenants' and household insurance ^{1 2}347	127.111	127.501	4.3	.3	.1	.4	.3
Fuels and utilities	5.081	213.031	210.978	1.0	-1.0	-4	.4	-2
Household energy	4.028	187.271	184.764	-2	-1.3	-6	.4	-4
Fuel oil and other fuels ¹276	276.551	286.367	10.0	3.5	1.0	4.0	3.5
Gas (piped) and electricity ^{3 5}	3.752	190.603	187.335	-1.0	-1.7	-8	.2	-7
Water and sewer and trash collection services ²	1.052	173.360	174.094	5.5	.4	.4	.4	.3
Household furnishings and operations	4.590	124.524	124.121	-2.5	-3	-4	.0	-2
Household operations ^{1 2}781	150.151	150.180	.0	.0	-2	-1	.0
Apparel	3.695	122.454	121.498	-8	-8	-6	-3	.2
Men's and boys' apparel903	114.090	112.824	-7	-1.1	-6	-3	-4
Women's and girls' apparel	1.580	110.723	109.778	-1.5	-9	-1.4	-4	.5
Infants' and toddlers' apparel196	114.663	115.106	-1.0	.4	-1.3	-1.9	.7
Footwear721	130.896	129.368	-9	-1.2	.3	.2	-8
Transportation	16.685	194.283	195.659	3.7	.7	.5	1.2	.3
Private transportation	15.497	189.674	190.915	3.7	.7	.5	1.3	.1
New and used motor vehicles ²	6.386	97.203	96.936	.9	-3	-2	-4	-3
New vehicles	3.573	137.849	138.222	-4	.3	.1	-2	-4
Used cars and trucks	2.012	144.040	142.250	6.0	-1.2	-7	-9	-5
Motor fuel	4.525	240.303	245.165	7.5	2.0	1.8	4.4	.7
Gasoline (all types)	4.337	239.527	244.345	7.3	2.0	1.6	4.6	.7
Motor vehicle parts and equipment ¹401	138.289	138.768	3.4	.3	.1	.4	.3
Motor vehicle maintenance and repair ¹	1.167	249.824	249.872	1.8	.0	.3	.2	.0
Public transportation	1.187	251.435	254.995	4.4	1.4	.5	.2	2.1
Medical care	6.513	391.240	391.660	3.2	.1	.6	.1	.1
Medical care commodities ¹	1.611	316.082	316.794	2.7	.2	.3	.1	.2
Medical care services	4.902	414.564	414.850	3.4	.1	.8	.2	.1
Professional services	2.796	330.057	330.508	2.8	.1	.4	.0	.3

See footnotes at end of table.

Table 1. Consumer Price Index for All Urban Consumers (CPI-U): U.S. city average, by expenditure category and commodity and service group-Continued

(1982-84=100, unless otherwise noted)

CPI-U	Relative importance, December 2009	Unadjusted indexes		Unadjusted percent change to Nov. 2010 from—		Seasonally adjusted percent change from—		
		Oct. 2010	Nov. 2010	Nov. 2009	Oct. 2010	Aug. to Sep.	Sep. to Oct.	Oct. to Nov.
Expenditure category								
Hospital and related services ³	1.619	618.936	619.747	6.6	0.1	1.5	0.5	-0.2
Recreation ²	6.437	112.984	112.839	-9	-1	-3	-1	.0
Video and audio ²	1.894	98.503	98.214	-2.0	-3	.0	-1	.0
Education and communication ²	6.434	130.959	130.894	1.6	.0	-1	-1	.1
Education ²	3.035	203.071	203.139	3.8	.0	-2	.0	.4
Educational books and supplies	.200	510.335	510.185	2.9	.0	.6	.5	.4
Tuition, other school fees, and childcare	2.835	584.286	584.509	3.9	.0	-3	.0	.4
Communication ²	3.399	84.531	84.423	-4	-1	.0	-2	-1
Information and information processing ^{1 2}	3.225	81.359	81.250	-5	-1	.0	-2	-1
Telephone services ^{1 2}	2.392	102.458	102.329	-2	-1	.1	-2	-1
Information technology, hardware and services ^{1 6}	.833	9.324	9.309	-1.7	-2	-4	-2	-2
Personal computers and peripheral equipment ⁷	.246	75.385	74.969	-4.0	-6	.1	-5	-4
Other goods and services	3.483	382.764	383.633	1.8	.2	-1	-3	.3
Tobacco and smoking products ¹	.871	821.529	820.854	5.0	-1	.1	-3	-1
Personal care	2.612	206.471	207.162	.8	.3	-2	-3	.5
Personal care products ¹	.688	159.951	160.401	-8	.3	-2	-6	.3
Personal care services ¹	.642	229.343	229.623	.6	.1	.0	-4	.1
Miscellaneous personal services	1.048	356.508	357.061	2.4	.2	-1	.2	.4
Commodity and service group								
Commodities	39.816	175.225	175.415	1.4	.1	.2	.5	.1
Food and beverages	14.795	221.005	220.991	1.5	.0	.3	.1	.2
Commodities less food and beverages	25.021	150.882	151.148	1.3	.2	.1	.7	.1
Nondurables less food and beverages	15.044	191.332	192.320	2.4	.5	.4	1.1	.7
Apparel	3.695	122.454	121.498	-8	-8	-6	-3	.2
Nondurables less food, beverages, and apparel	11.349	238.530	240.762	3.5	.9	.8	1.5	.6
Durables	9.978	110.966	110.573	-5	-4	-3	-4	-4
Services	60.184	261.927	261.921	1.0	.0	.0	.1	.1
Rent of shelter ⁴	31.942	259.054	259.142	.2	.0	.3	.1	.4
Tenants' and household insurance ^{1 2}	.347	127.111	127.501	4.3	.3	.1	.4	.3
Gas (piped) and electricity ^{3 5}	3.752	190.603	187.335	-1.0	-1.7	-8	.2	-7
Water and sewer and trash collection services ²	1.052	173.360	174.094	5.5	.4	.4	.4	.3
Household operations ^{1 2}	.781	150.151	150.180	.0	.0	-2	-1	.0
Transportation services	6.060	261.625	263.265	2.9	.6	.3	.3	.5
Medical care services	4.902	414.564	414.850	3.4	.1	.8	.2	.1
Other services	11.347	311.375	311.499	1.6	.0	-2	.0	.2
Special indexes								
All items less food	86.262	218.431	218.538	1.1	.0	.1	.3	.1
All items less shelter	67.711	209.467	209.560	1.6	.0	.1	.3	.1
All items less medical care	93.487	210.257	210.336	1.0	.0	.1	.2	.1
Commodities less food	26.078	153.508	153.761	1.3	.2	.1	.7	.1
Nondurables less food	16.100	193.344	194.266	2.3	.5	.5	.8	.7
Nondurables less food and apparel	12.405	236.158	238.165	3.3	.8	.7	1.2	.7
Nondurables	29.838	206.518	207.053	2.0	.3	.3	.8	.4
Services less rent of shelter ⁴	28.243	285.588	285.467	1.9	.0	.1	.2	.1
Services less medical care services	55.282	250.066	250.044	.8	.0	.1	.1	.3
Energy	8.553	210.947	211.970	3.9	.5	.7	2.6	.2
All items less energy	91.447	221.236	221.235	.9	.0	.0	.0	.1
All items less food and energy	77.708	222.079	222.077	.8	.0	.0	.0	.1
Commodities less food and energy commodities	21.276	144.028	143.594	-2	-3	-2	-2	-1
Energy commodities	4.801	243.784	248.928	7.7	2.1	1.8	4.4	.8
Services less energy services	56.432	269.208	269.509	1.1	.1	.1	.1	.2
Purchasing power of the consumer dollar (1982-84=\$1.00)	-	\$.457	\$.457	-	-	-	-	-
Purchasing power of the consumer dollar (1967=\$1.00)	-	\$.153	\$.153	-	-	-	-	-

¹ Not seasonally adjusted.

² Indexes on a December 1997=100 base.

³ This index series was calculated using a Laspeyres estimator. All other item stratum index series were calculated using a geometric means estimator.

⁴ Indexes on a December 1982=100 base.

⁵ In January, 2011, this series will be re-titled Energy services.

⁶ Indexes on a December 1988=100 base.

⁷ Indexes on a December 2007=100 base.

- Data not available.

NOTE: Index applies to a month as a whole, not to any specific date.

Table 2. Consumer Price Index for All Urban Consumers (CPI-U): Seasonally adjusted U.S. city average, by expenditure category and commodity and service group

(1982-84=100, unless otherwise noted)

CPI-U	Seasonally adjusted indexes				Seasonally adjusted annual rate percent change for					
					3 months ended—			6 months ended—		
	Aug. 2010	Sep. 2010	Oct. 2010	Nov. 2010	Feb. 2010	May 2010	Aug. 2010	Nov. 2010	May 2010	Nov. 2010
Expenditure category										
All items	218.150	218.372	218.879	219.146	1.4	-0.7	1.7	1.8	0.3	1.8
Food and beverages	219.961	220.644	220.808	221.216	1.6	1.7	.4	2.3	1.7	1.3
Food	219.563	220.262	220.408	220.841	1.9	1.8	.2	2.3	1.8	1.3
Food at home	215.506	216.241	216.339	216.924	2.7	2.5	-.8	2.7	2.6	.9
Cereals and bakery products	248.746	250.651	250.168	251.147	-.7	-1.2	-2.9	3.9	-.9	.4
Meats, poultry, fish, and eggs	208.537	210.311	211.630	212.686	3.2	8.4	3.8	8.2	5.7	6.0
Dairy and related products ¹	198.712	199.042	201.291	201.277	10.5	-2.1	2.0	5.3	4.0	3.6
Fruits and vegetables	270.413	270.585	268.779	268.320	6.5	8.4	-10.6	-3.1	7.4	-6.9
Nonalcoholic beverages and beverage materials	161.588	161.667	160.937	162.234	-.7	-1.7	1.0	1.6	-1.2	1.3
Other food at home	191.436	191.482	191.175	191.387	.7	.1	.3	-.1	.4	.1
Sugar and sweets	200.610	202.826	204.188	201.329	5.5	.8	-2.8	1.4	3.1	-.7
Fats and oils	201.077	201.256	202.234	203.821	3.0	1.1	2.4	5.6	2.0	4.0
Other foods	205.055	204.645	203.766	204.398	-.6	-.1	.7	-1.3	-.4	-3.3
Other miscellaneous foods ^{1 2}	121.787	122.106	121.698	120.623	-.3	-1.9	4.0	-3.8	-1.1	.0
Food away from home ¹	226.422	227.075	227.287	227.512	.8	.9	1.5	1.9	.8	1.7
Other food away from home ^{1 2}	159.517	160.072	160.036	160.392	4.0	-.1	2.5	2.2	1.9	2.4
Alcoholic beverages	223.789	224.249	224.665	224.724	-1.4	.7	2.6	1.7	-.3	2.1
Housing	216.277	216.157	216.351	216.425	-1.3	.0	.2	.3	-.7	.2
Shelter	248.475	248.590	248.725	248.990	-1.9	.2	.6	.8	-.9	.7
Rent of primary residence ³	249.213	249.535	249.675	250.217	.0	.3	.3	1.6	.2	1.0
Lodging away from home ²	135.651	135.371	134.035	132.465	-7.5	18.2	1.0	-9.1	4.6	-4.2
Owners' equivalent rent of residences ^{3 4}	256.580	256.667	256.884	257.192	-.4	-.4	.6	1.0	-.4	.8
Owners' equivalent rent of primary residence ^{3 4}	256.575	256.661	256.878	257.184	-.4	-.4	.6	1.0	-.4	.8
Tenants' and household insurance ^{1 2}	126.463	126.627	127.111	127.501	7.4	1.9	4.6	3.3	4.6	4.0
Fuels and utilities	214.372	213.483	214.378	213.899	3.6	2.1	-1.0	-.9	2.9	-.9
Household energy	189.216	187.999	188.822	188.156	2.7	1.0	-2.1	-2.2	1.9	-2.2
Fuel oil and other fuels ¹	263.196	265.812	276.551	286.367	28.9	-6.6	-13.1	40.1	9.7	10.4
Gas (piped) and electricity ^{3 5}	193.441	191.969	192.302	191.052	.9	1.6	-1.3	-4.8	1.3	-3.1
Water and sewer and trash collection services ²	171.833	172.598	173.204	173.652	7.9	6.4	3.6	4.3	7.1	4.0
Household furnishings and operations	125.193	124.729	124.685	124.453	-2.3	-3.6	-1.6	-2.3	-3.0	-2.0
Household operations ^{1 2}	150.630	150.346	150.151	150.180	-1.1	2.3	.1	-1.2	.6	-.5
Apparel	120.205	119.444	119.028	119.248	-1.4	-3.5	5.0	-3.1	-2.5	.9
Men's and boys' apparel	113.094	112.412	112.077	111.579	-2.2	-3.0	8.2	-5.3	-2.6	1.2
Women's and girls' apparel	107.759	106.293	105.915	106.487	.5	-6.8	5.3	-4.6	-3.2	.2
Infants' and toddlers' apparel	115.667	114.148	111.956	112.760	-1.4	.9	6.7	-9.7	-.2	-1.8
Footwear	127.882	128.327	128.548	127.489	-.2	-4.0	1.7	-1.2	-2.1	.2
Transportation	192.909	193.961	196.318	196.833	8.0	-6.7	6.3	8.4	.4	7.3
Private transportation	188.302	189.331	191.780	192.011	8.9	-8.3	7.3	8.1	-.1	7.7
New and used motor vehicles ²	97.908	97.739	97.303	96.966	3.4	.9	3.8	-3.8	2.1	-.1
New vehicles	138.529	138.704	138.417	137.924	-2.5	.6	2.0	-1.7	-1.0	.1
Used cars and trucks	146.093	145.139	143.833	143.137	18.8	5.0	9.9	-7.9	11.7	.6
Motor fuel	233.847	238.064	248.648	250.355	22.2	-28.9	17.1	31.4	-6.8	24.0
Gasoline (all types)	232.965	236.714	247.512	249.154	22.9	-29.0	16.2	30.8	-6.6	23.3
Motor vehicle parts and equipment ¹	137.646	137.802	138.289	138.768	4.3	1.4	4.5	3.3	2.9	3.9
Motor vehicle maintenance and repair ¹	248.390	249.231	249.824	249.872	.7	2.2	1.8	2.4	1.5	2.1
Public transportation	250.191	251.529	251.992	257.386	-2.9	16.1	-5.9	12.0	6.2	2.7
Medical care	388.842	391.328	391.902	392.323	4.8	2.6	1.8	3.6	3.7	2.7
Medical care commodities ¹	314.881	315.804	316.082	316.794	5.7	2.7	-.1	2.5	4.2	1.2
Medical care services	411.709	414.806	415.495	415.781	4.5	2.5	2.4	4.0	3.5	3.2
Professional services	329.413	330.705	330.626	331.593	3.6	1.0	4.0	2.7	2.3	3.3

See footnotes at end of table.

Table 2. Consumer Price Index for All Urban Consumers (CPI-U): Seasonally adjusted U.S. city average, by expenditure category and commodity and service group-Continued

(1982-84=100, unless otherwise noted)

CPI-U	Seasonally adjusted indexes				Seasonally adjusted annual rate percent change for					
					3 months ended—			6 months ended—		
	Aug. 2010	Sep. 2010	Oct. 2010	Nov. 2010	Feb. 2010	May 2010	Aug. 2010	Nov. 2010	May 2010	Nov. 2010
Expenditure category										
Hospital and related services ³	608.304	617.619	621.010	619.809	8.7	7.4	2.5	7.8	8.0	5.1
Recreation ²	113.375	113.028	112.945	112.985	-1.9	.5	-.6	-1.4	-.7	-1.0
Video and audio ²	98.747	98.746	98.605	98.570	-3.9	-1.4	-1.9	-.7	-2.7	-1.3
Education and communication ²	130.369	130.220	130.140	130.316	2.8	2.5	1.4	-.2	2.6	.6
Education ²	200.746	200.358	200.442	201.278	5.0	5.8	3.5	1.1	5.4	2.3
Educational books and supplies	501.521	504.653	507.055	509.314	6.1	2.9	-3.3	6.4	4.5	1.4
Tuition, other school fees, and childcare	577.834	576.388	576.457	578.848	5.0	6.0	4.0	.7	5.5	2.3
Communication ²	84.695	84.660	84.527	84.424	.6	-.4	-.5	-1.3	.1	-.9
Information and information processing ^{1 2}	81.532	81.497	81.359	81.250	.3	-.5	-.5	-1.4	-.1	-1.0
Telephone services ^{1 2}	102.534	102.633	102.458	102.329	-.9	.3	.6	-.8	-.3	-.1
Information technology, hardware and services ^{1 6}	9.381	9.339	9.324	9.309	3.1	-2.8	-3.8	-3.0	.1	-3.4
Personal computers and peripheral equipment ⁷	76.281	76.330	75.917	75.649	-6.3	-6.7	.5	-3.3	-6.5	-1.4
Other goods and services	384.493	383.948	382.701	383.904	1.2	1.0	5.9	-.6	1.1	2.6
Tobacco and smoking products ¹	822.662	823.766	821.529	820.854	2.2	6.5	12.8	-.9	4.3	5.8
Personal care	207.630	207.136	206.425	207.359	.9	-.8	3.6	-.5	.0	1.5
Personal care products ¹	161.337	160.985	159.951	160.401	.7	-4.1	2.5	-2.3	-1.7	.1
Personal care services ¹	230.354	230.332	229.343	229.623	-.4	3.4	.6	-1.3	1.5	-.3
Miscellaneous personal services	355.528	355.275	356.127	357.566	2.1	1.8	3.3	2.3	1.9	2.8
Commodity and service group										
Commodities	174.304	174.665	175.490	175.685	3.7	-3.9	2.7	3.2	-.2	3.0
Food and beverages	219.961	220.644	220.808	221.216	1.6	1.7	.4	2.3	1.7	1.3
Commodities less food and beverages	150.042	150.262	151.324	151.427	5.0	-7.1	4.2	3.7	-1.3	4.0
Nondurables less food and beverages	188.620	189.461	191.616	192.943	8.3	-13.6	7.3	9.5	-3.2	8.4
Apparel	120.205	119.444	119.028	119.248	-1.4	-3.5	5.0	-3.1	-2.5	.9
Nondurables less food, beverages, and apparel	235.953	237.892	241.403	242.946	11.5	-15.6	8.5	12.4	-3.0	10.4
Durables	111.895	111.580	111.174	110.683	.9	-.7	2.1	-4.3	.1	-1.1
Services	261.680	261.781	262.008	262.313	-.1	1.6	.9	1.0	.7	1.0
Rent of shelter ⁴	258.276	259.063	259.238	260.293	-2.0	-.3	-.1	3.2	-1.2	1.5
Tenants' and household insurance ^{1 2}	126.463	126.627	127.111	127.501	7.4	1.9	4.6	3.3	4.6	4.0
Gas (piped) and electricity ^{3 5}	193.441	191.969	192.302	191.052	.9	1.6	-1.3	-4.8	1.3	-3.1
Water and sewer and trash collection services ²	171.833	172.598	173.204	173.652	7.9	6.4	3.6	4.3	7.1	4.0
Household operations ^{1 2}	150.630	150.346	150.151	150.180	-1.1	2.3	.1	-1.2	.6	-.5
Transportation services	260.059	260.777	261.655	263.019	1.5	5.1	.3	4.6	3.3	2.4
Medical care services	411.709	414.806	415.495	415.781	4.5	2.5	2.4	4.0	3.5	3.2
Other services	311.046	310.495	310.397	311.001	1.4	2.8	2.1	-.1	2.1	1.0
Special indexes										
All items less food	217.947	218.095	218.658	218.899	1.3	-1.1	2.0	1.8	.1	1.9
All items less shelter	208.744	209.012	209.671	209.943	2.9	-1.1	2.2	2.3	.9	2.3
All items less medical care	209.770	209.905	210.404	210.664	1.1	-.9	1.7	1.7	.1	1.7
Commodities less food	152.662	152.889	153.938	154.040	4.7	-6.8	4.1	3.7	-1.2	3.9
Nondurables less food	190.950	191.839	193.327	194.729	7.9	-12.3	7.1	8.2	-2.7	7.6
Nondurables less food and apparel	233.855	235.546	238.419	240.153	10.2	-14.1	8.0	11.2	-2.7	9.6
Nondurables	204.516	205.209	206.911	207.704	4.2	-5.6	3.3	6.4	-.8	4.8
Services less rent of shelter ⁴	284.979	285.138	285.577	285.971	2.3	3.2	.9	1.4	2.8	1.1
Services less medical care services	249.511	249.872	250.121	250.920	-.6	1.4	.2	2.3	.4	1.2
Energy	208.874	210.256	215.720	216.190	12.8	-16.2	7.6	14.8	-2.8	11.1
All items less energy	220.823	220.930	220.938	221.187	.3	1.0	1.2	.7	.7	.9
All items less food and energy	221.779	221.781	221.765	221.982	.1	.8	1.3	.4	.4	.9
Commodities less food and energy commodities	144.079	143.727	143.379	143.251	.7	-1.1	2.0	-2.3	-.2	-.1
Energy commodities	236.938	241.105	251.770	253.894	22.6	-27.8	15.1	31.8	-5.9	23.2
Services less energy services	268.672	268.921	269.138	269.589	-.2	1.6	1.1	1.4	.7	1.2

¹ Not seasonally adjusted.

² Indexes on a December 1997=100 base.

³ This index series was calculated using a Laspeyres estimator. All other item stratum index series were calculated using a geometric means estimator.

⁴ Indexes on a December 1982=100 base.

⁵ In January, 2011, this series will be re-titled Energy services.

⁶ Indexes on a December 1988=100 base.

⁷ Indexes on a December 2007=100 base.

NOTE: Index applies to a month as a whole, not to any specific date.

Table 3. Consumer Price Index for All Urban Consumers (CPI-U): Selected areas, all items index

(1982-84=100, unless otherwise noted)

CPI-U	Pricing schedule 1	All items									
		Indexes				Percent change to Nov.2010 from—			Percent change to Oct.2010 from—		
		Aug. 2010	Sep. 2010	Oct. 2010	Nov. 2010	Nov. 2009	Sep. 2010	Oct. 2010	Oct. 2009	Aug. 2010	Sep. 2010
U.S. city average	M	218.312	218.439	218.711	218.803	1.1	0.2	0.0	1.2	0.2	0.1
Region and area size²											
Northeast urban	M	234.150	234.027	234.671	235.094	1.5	.5	.2	1.5	.2	.3
Size A - More than 1,500,000	M	236.089	235.995	236.560	236.806	1.3	.3	.1	1.3	.2	.2
Size B/C - 50,000 to 1,500,000 ³	M	139.348	139.229	139.746	140.282	1.9	.8	.4	1.7	.3	.4
Midwest urban	M	208.639	208.788	208.689	208.816	1.2	.0	.1	1.5	.0	.0
Size A - More than 1,500,000	M	208.912	209.253	209.182	209.344	1.0	.0	.1	1.2	.1	.0
Size B/C - 50,000 to 1,500,000 ³	M	134.375	134.275	134.074	134.058	1.6	-.2	.0	1.8	-.2	-.1
Size D - Nonmetropolitan (less than 50,000)	M	204.985	205.100	205.565	206.014	1.5	.4	.2	1.5	.3	.2
South urban	M	211.308	211.775	212.026	211.996	1.1	.1	.0	1.3	.3	.1
Size A - More than 1,500,000	M	212.947	213.493	213.589	213.424	.9	.0	-.1	1.2	.3	.0
Size B/C - 50,000 to 1,500,000 ³	M	134.335	134.658	134.890	134.892	1.2	.2	.0	1.4	.4	.2
Size D - Nonmetropolitan (less than 50,000)	M	215.266	215.172	215.390	215.736	1.1	.3	.2	1.4	.1	.1
West urban	M	221.523	221.384	221.708	221.671	.9	.1	.0	.6	.1	.1
Size A - More than 1,500,000	M	225.790	225.726	226.058	225.847	1.1	.1	-.1	.8	.1	.1
Size B/C - 50,000 to 1,500,000 ³	M	133.704	133.544	133.745	133.930	.4	.3	.1	.1	.0	.2
Size classes											
A ⁴	M	199.477	199.617	199.842	199.844	1.1	.1	.0	1.1	.2	.1
B/C ³	M	134.908	134.987	135.174	135.289	1.2	.2	.1	1.3	.2	.1
D	M	211.606	211.524	211.831	212.124	1.2	.3	.1	1.3	.1	.1
Selected local areas⁵											
Chicago-Gary-Kenosha, IL-IN-WI	M	212.784	213.339	213.332	213.066	.4	-.1	-.1	.8	.3	.0
Los Angeles-Riverside-Orange County, CA ...	M	226.373	226.048	226.794	225.941	.7	.0	-.4	.7	.2	.3
New York-Northern N.J.-Long Island, NY-NJ-CT-PA	M	241.569	241.485	241.981	241.960	1.3	.2	.0	1.5	.2	.2
Boston-Brockton-Nashua, MA-NH-ME-CT	1	-	236.474	-	238.103	.6	.7	-	-	-	-
Cleveland-Akron, OH	1	-	205.492	-	206.168	2.3	.3	-	-	-	-
Dallas-Fort Worth, TX	1	-	201.882	-	201.168	-.4	-.4	-	-	-	-
Washington-Baltimore, DC-MD-VA-WV ⁶	1	-	142.738	-	142.915	1.6	.1	-	-	-	-
Atlanta, GA	2	204.511	-	202.913	-	-	-	-	.9	-.8	-
Detroit-Ann Arbor-Flint, MI	2	205.412	-	205.824	-	-	-	-	.4	.2	-
Houston-Galveston-Brazoria, TX	2	195.165	-	195.094	-	-	-	-	1.8	.0	-
Miami-Fort Lauderdale, FL	2	222.803	-	223.631	-	-	-	-	.5	.4	-
Philadelphia-Wilmington-Atlantic City, PA-NJ-DE-MD	2	228.500	-	228.543	-	-	-	-	1.7	.0	-
San Francisco-Oakland-San Jose, CA	2	227.954	-	228.107	-	-	-	-	.9	.1	-
Seattle-Tacoma-Bremerton, WA	2	227.645	-	227.251	-	-	-	-	.4	-.2	-

¹ Foods, fuels, and several other items priced every month in all areas; most other goods and services priced as indicated:

M - Every month.

1 - January, March, May, July, September, and November.

2 - February, April, June, August, October, and December.

² Regions defined as the four Census regions. See technical notes.

³ Indexes on a December 1996=100 base.

⁴ Indexes on a December 1986=100 base.

⁵ In addition, the following metropolitan areas are published semiannually and appear in Tables 34 and 39 of the January and July issues of the CPI Detailed Report: Anchorage, AK; Cincinnati-Hamilton, OH-KY-IN; Denver-Boulder-Greeley, CO; Honolulu, HI; Kansas City, MO-KS; Milwaukee-Racine, WI; Minneapolis-St. Paul, MN-WI; Phoenix-Mesa, AZ; Pittsburgh, PA; Portland-Salem, OR-WA; St. Louis, MO-IL; San Diego, CA;

Tampa-St. Petersburg-Clearwater, FL.

⁶ Indexes on a November 1996=100 base.

- Data not available.

NOTE: Local area indexes are byproducts of the national CPI program. Each local index has a smaller sample size than the national index and is, therefore, subject to substantially more sampling and other measurement error. As a result, local area indexes show greater volatility than the national index, although their long-term trends are similar. Therefore, the Bureau of Labor Statistics strongly urges users to consider adopting the national average CPI for use in their escalator clauses.

NOTE: Index applies to a month as a whole, not to any specific date.

Table 4. Consumer Price Index for Urban Wage Earners and Clerical Workers (CPI-W): U.S. city average, by expenditure category and commodity and service group

(1982-84=100, unless otherwise noted)

CPI-W Expenditure category	Relative importance, December 2009	Unadjusted indexes		Unadjusted percent change to Nov. 2010 from—		Seasonally adjusted percent change from—		
		Oct. 2010	Nov. 2010	Nov. 2009	Oct. 2010	Aug. to Sep.	Sep. to Oct.	Oct. to Nov.
All items	100.000	214.623	214.750	1.3	0.1	0.2	0.3	0.0
All items (1967=100)	-	639.296	639.673	-	-	-	-	-
Food and beverages	16.425	220.199	220.245	1.6	.0	.3	.1	.2
Food	15.333	219.736	219.768	1.6	.0	.3	.1	.2
Food at home	8.900	215.511	215.414	1.9	.0	.3	.0	.3
Cereals and bakery products	1.257	250.429	250.648	-3	.1	.7	-.2	.4
Meats, poultry, fish, and eggs	2.144	211.978	212.693	6.0	.3	.9	.6	.4
Dairy and related products ¹898	199.890	200.084	3.8	.1	.1	1.1	.1
Fruits and vegetables	1.223	267.466	266.802	-1	-2	.0	-.7	-.2
Nonalcoholic beverages and beverage materials	1.123	160.678	160.999	.2	.2	-.1	-.5	1.0
Other food at home	2.254	190.351	189.265	.2	-.6	-.1	-.2	-.2
Sugar and sweets321	201.469	199.542	1.3	-1.0	1.1	.6	-1.0
Fats and oils259	203.670	202.668	2.7	-.5	.1	.5	.8
Other foods	1.674	203.935	202.901	-.4	-.5	-.3	-.4	.3
Other miscellaneous foods ^{1 2}472	121.806	120.723	-.8	-.9	.3	-.3	-.9
Food away from home ¹	6.433	227.412	227.634	1.3	.1	.3	.1	.1
Other food away from home ^{1 2}321	160.988	161.428	2.9	.3	.6	.1	.3
Alcoholic beverages	1.092	225.531	225.771	1.0	.1	.1	.1	.2
Housing	39.753	212.681	212.490	.1	-.1	.0	.1	.1
Shelter	30.171	242.513	242.806	.3	.1	.1	.1	.1
Rent of primary residence ³	8.476	247.823	248.553	.5	.3	.1	.0	.2
Lodging away from home ²432	134.787	128.305	1.0	-4.8	-3	-.7	-.9
Owners' equivalent rent of residences ^{3 4}	20.959	232.680	233.047	.2	.2	.1	.1	.1
Owners' equivalent rent of primary residence ^{3 4}	20.218	232.683	233.049	.2	.2	.1	.1	.1
Tenants' and household insurance ^{1 2}303	128.130	128.556	4.7	.3	.2	.3	.3
Fuels and utilities	5.632	211.649	209.449	.9	-1.0	-.4	.3	-.3
Household energy	4.517	185.262	182.634	-.2	-1.4	-.7	.3	-.4
Fuel oil and other fuels ¹271	278.516	287.994	9.8	3.4	.9	4.2	3.4
Gas (piped) and electricity ^{3 5}	4.246	189.313	186.023	-.8	-1.7	-.8	.1	-.7
Water and sewer and trash collection services ²	1.114	173.843	174.621	5.5	.4	.5	.2	.4
Household furnishings and operations	3.950	120.643	120.257	-2.6	-.3	-.3	.0	-.1
Household operations ^{1 2}369	152.729	152.778	.0	.0	-.5	-.1	.0
Apparel	3.788	121.587	120.628	-1.3	-.8	-.4	-.3	.0
Men's and boys' apparel945	113.618	112.815	-1.1	-.7	-.6	-.5	-.1
Women's and girls' apparel	1.568	110.474	109.388	-1.5	-1.0	-.3	-.2	.3
Infants' and toddlers' apparel285	117.250	117.900	-1.2	.6	-1.6	-1.7	.7
Footwear781	129.851	128.216	-1.9	-1.3	-.2	.2	-1.0
Transportation	18.647	193.553	194.884	4.3	.7	.6	1.5	-.1
Private transportation	17.881	190.259	191.524	4.3	.7	.7	1.6	-.2
New and used motor vehicles ²	6.952	96.402	96.024	1.8	-.4	-.3	-.5	-.3
New vehicles	3.385	138.806	139.224	-.5	.3	.1	-.2	-.3
Used cars and trucks	2.944	144.952	143.176	6.1	-1.2	-.6	-.9	-.5
Motor fuel	5.774	241.218	245.957	7.5	2.0	2.1	4.8	-.4
Gasoline (all types)	5.530	240.558	245.250	7.3	2.0	1.6	4.6	.7
Motor vehicle parts and equipment ¹472	138.153	138.654	3.2	.4	.1	.3	.4
Motor vehicle maintenance and repair ¹	1.180	252.546	252.610	1.9	.0	.3	.2	.0
Public transportation766	249.169	252.230	3.9	1.2	.4	.4	1.7
Medical care	5.261	392.749	393.277	3.4	.1	.6	.2	.1
Medical care commodities ¹	1.301	307.539	308.332	2.8	.3	.3	.1	.3
Medical care services	3.961	417.913	418.307	3.6	.1	.7	.2	.1
Professional services	2.195	333.450	333.868	2.9	.1	.4	.0	.3

See footnotes at end of table.

Table 4. Consumer Price Index for Urban Wage Earners and Clerical Workers (CPI-W): U.S. city average, by expenditure category and commodity and service group-Continued

(1982-84=100, unless otherwise noted)

CPI-W Expenditure category	Relative importance, December 2009	Unadjusted indexes		Unadjusted percent change to Nov. 2010 from—		Seasonally adjusted percent change from—			
		Oct. 2010	Nov. 2010	Nov. 2009	Oct. 2010	Aug. to Sep.	Sep. to Oct.	Oct. to Nov.	
Hospital and related services ³	1.339	620.670	622.116	7.3	0.2	1.5	0.6	-0.1	
Recreation ²	6.031	109.449	109.082	-1.2	-3	-3	-1	-2	
Video and audio ²	2.046	99.054	98.774	-1.9	-3	.0	-1	-1	
Education and communication ²	6.175	125.617	125.526	1.1	-1	-1	-1	.1	
Education ²	2.327	200.129	200.228	3.9	.0	-2	.1	.4	
Educational books and supplies196	512.956	513.546	3.0	.1	.6	.3	.6	
Tuition, other school fees, and childcare	2.131	563.319	563.563	3.9	.0	-3	.1	.4	
Communication ²	3.848	87.170	87.040	-5	-1	-1	-2	-1	
Information and information processing ^{1 2}	3.715	84.978	84.846	-6	-2	-1	-2	-2	
Telephone services ^{1 2}	2.906	102.135	101.975	-4	-2	.1	-2	-2	
Information technology, hardware and services ^{1 6}809	9.864	9.849	-1.2	-2	-6	-3	-2	
Personal computers and peripheral equipment ⁷225	74.970	74.615	-4.2	-5	-1	-8	-4	
Other goods and services	3.919	411.655	412.383	2.3	.2	.0	-3	.2	
Tobacco and smoking products ¹	1.397	826.468	825.644	5.0	-1	.1	-3	-1	
Personal care	2.522	204.142	204.830	.8	.3	-1	-4	.4	
Personal care products ¹733	160.174	160.801	-6	.4	-2	-6	.4	
Personal care services ¹577	229.635	229.855	.5	.1	.0	-4	.1	
Miscellaneous personal services	1.019	357.784	358.407	2.4	.2	.1	.2	.4	
Commodity and service group									
Commodities	43.589	178.283	178.504	1.7	.1	.3	.6	.0	
Food and beverages	16.425	220.199	220.245	1.6	.0	.3	.1	.2	
Commodities less food and beverages	27.164	155.663	155.953	1.7	.2	.3	.9	-2	
Nondurables less food and beverages	16.703	199.991	201.110	2.6	.6	.6	1.3	.8	
Apparel	3.788	121.587	120.628	-1.3	-8	-4	-3	.0	
Nondurables less food, beverages, and apparel	12.915	253.167	255.572	3.9	.9	1.0	1.9	.5	
Durables	10.461	112.294	111.813	.2	-4	-2	-4	-4	
Services	56.411	257.198	257.219	1.0	.0	.0	.1	.1	
Rent of shelter ⁴	29.868	233.679	233.956	.2	.1	.2	.1	.3	
Tenants' and household insurance ^{1 2}303	128.130	128.556	4.7	.3	.2	.3	.3	
Gas (piped) and electricity ^{3 5}	4.246	189.313	186.023	-8	-1.7	-8	.1	-7	
Water and sewer and trash collection services ²	1.114	173.843	174.621	5.5	.4	.5	.2	.4	
Household operations ^{1 2}369	152.729	152.778	.0	.0	-5	-1	.0	
Transportation services	5.918	262.219	263.804	3.1	.6	.2	.4	.4	
Medical care services	3.961	417.913	418.307	3.6	.1	.7	.2	.1	
Other services	10.631	297.397	297.313	1.3	.0	-2	.0	.1	
Special indexes									
All items less food	84.667	213.532	213.675	1.2	.1	.1	.4	.0	
All items less shelter	69.829	206.770	206.838	1.7	.0	.2	.4	.0	
All items less medical care	94.739	207.409	207.523	1.2	.1	.1	.3	.0	
Commodities less food	28.256	158.038	158.328	1.7	.2	.3	.9	-2	
Nondurables less food	17.795	201.606	202.679	2.5	.5	.6	1.2	.8	
Nondurables less food and apparel	14.007	249.688	251.899	3.6	.9	.9	1.6	.6	
Nondurables	33.128	210.627	211.249	2.1	.3	.5	1.0	.1	
Services less rent of shelter ⁴	26.543	252.181	251.894	1.9	-1	.0	.2	.1	
Services less medical care services	52.450	245.955	245.958	.8	.0	.1	.1	.2	
Energy	10.291	211.514	212.622	4.1	.5	.9	2.9	-4	
All items less energy	89.709	215.961	215.970	1.0	.0	.1	.0	.1	
All items less food and energy	74.376	215.580	215.584	.8	.0	.0	.0	.1	
Commodities less food and energy commodities	22.211	146.268	145.757	.1	-3	-2	-3	-1	
Energy commodities	6.045	243.933	248.880	7.6	2.0	2.0	4.8	-3	
Services less energy services	52.165	264.603	265.001	1.2	.2	.1	.1	.2	
Purchasing power of the consumer dollar (1982-84=\$1.00)	-	\$.466	\$.466	-	-	-	-	-	
Purchasing power of the consumer dollar (1967=\$1.00)	-	\$.156	\$.156	-	-	-	-	-	

¹ Not seasonally adjusted.

² Indexes on a December 1997=100 base.

³ This index series was calculated using a Laspeyres estimator. All other item stratum index series were calculated using a geometric means estimator.

⁴ Indexes on a December 1984=100 base

⁵ In January, 2011, this series will be re-titled Energy services.

⁶ Indexes on a December 1988=100 base.

⁷ Indexes on a December 2007=100 base.

- Data not available.

NOTE: Index applies to a month as a whole, not to any specific date.

Table 5. Consumer Price Index for Urban Wage Earners and Clerical Workers (CPI-W): Seasonally adjusted U.S. city average, by expenditure category and commodity and service group

(1982-84=100, unless otherwise noted)

CPI-W	Seasonally adjusted indexes				Seasonally adjusted annual rate percent change for					
					3 months ended—			6 months ended—		
	Aug. 2010	Sep. 2010	Oct. 2010	Nov. 2010	Feb. 2010	May 2010	Aug. 2010	Nov. 2010	May 2010	Nov. 2010
Expenditure category										
All items	214.019	214.345	215.005	215.099	2.3	-1.4	2.2	2.0	0.4	2.1
Food and beverages	219.203	219.852	220.003	220.512	1.7	1.7	.5	2.4	1.7	1.4
Food	218.696	219.367	219.514	220.027	1.9	1.8	.3	2.5	1.8	1.4
Food at home	214.392	215.042	215.136	215.851	2.9	2.4	-.6	2.8	2.6	1.1
Cereals and bakery products	249.429	251.234	250.767	251.854	-1.4	-7	-2.9	3.9	-1.0	.5
Meats, poultry, fish, and eggs	208.288	210.142	211.446	212.372	4.1	7.7	4.1	8.1	5.9	6.1
Dairy and related products ¹	197.651	197.812	199.890	200.084	10.5	-2.2	2.4	5.0	4.0	3.7
Fruits and vegetables	267.571	267.680	265.939	265.517	6.5	8.2	-10.9	-3.0	7.4	-7.1
Nonalcoholic beverages and beverage materials	161.246	161.087	160.297	161.964	-1	-1.5	.7	1.8	-.8	1.3
Other food at home	190.637	190.495	190.170	190.508	.8	.0	.3	-.3	.4	.0
Sugar and sweets	199.065	201.240	202.408	200.410	5.3	1.0	-3.8	2.7	3.2	-.6
Fats and oils	201.168	201.340	202.318	203.951	3.2	.2	1.7	5.6	1.7	3.6
Other foods	205.225	204.561	203.701	204.329	-4	-3	1.0	-1.7	-.4	-.4
Other miscellaneous foods ^{1 2}	121.804	122.164	121.806	120.723	-5	-2.0	3.1	-3.5	-1.3	-.2
Food away from home ¹	226.481	227.188	227.412	227.634	.6	.9	1.5	2.1	.8	1.8
Other food away from home ^{1 2}	159.866	160.755	160.988	161.428	5.1	.2	2.5	4.0	2.6	3.2
Alcoholic beverages	225.179	225.507	225.707	226.149	-1.3	.3	3.5	1.7	-.5	2.6
Housing	212.842	212.764	212.959	213.083	-.7	.0	.1	.5	-.3	.3
Shelter	242.282	242.448	242.602	242.941	-1.2	.1	.5	1.1	-.5	.8
Rent of primary residence ³	247.460	247.767	247.885	248.466	-.1	.4	.0	1.6	.1	.8
Lodging away from home ²	136.626	136.197	135.294	134.069	-6.7	15.8	.6	-7.3	4.0	-3.4
Owners' equivalent rent of residences ^{3 4}	232.443	232.567	232.759	233.045	-.6	-.3	.6	1.0	-.5	.8
Owners' equivalent rent of primary residence ^{3 4}	232.444	232.568	232.762	233.047	-.6	-.3	.6	1.0	-.5	.8
Tenants' and household insurance ^{1 2}	127.526	127.718	128.130	128.556	8.5	2.2	4.8	3.3	5.3	4.0
Fuels and utilities	213.407	212.484	213.115	212.541	3.0	2.6	-.2	-1.6	2.8	-.9
Household energy	187.614	186.387	186.978	186.171	1.9	1.7	-1.0	-3.0	1.8	-2.0
Fuel oil and other fuels ¹	264.904	267.283	278.516	287.994	31.9	-9.0	-13.4	39.7	9.6	10.0
Gas (piped) and electricity ^{3 5}	192.489	191.045	191.184	189.877	.2	2.5	-.2	-5.3	1.3	-2.8
Water and sewer and trash collection services ²	172.296	173.079	173.455	174.105	8.4	6.3	3.0	4.3	7.4	3.7
Household furnishings and operations	121.001	120.681	120.687	120.577	-2.1	-4.5	-2.3	-1.4	-3.3	-1.9
Household operations ^{1 2}	153.542	152.851	152.729	152.778	-3.1	4.4	1.0	-2.0	.6	-.5
Apparel	119.017	118.544	118.175	118.205	-1.3	-4.2	2.8	-2.7	-2.8	.0
Men's and boys' apparel	112.965	112.281	111.728	111.637	-3.8	-2.8	7.1	-4.6	-3.3	1.1
Women's and girls' apparel	106.111	105.776	105.596	105.902	1.7	-8.1	1.4	-.8	-3.3	.3
Infants' and toddlers' apparel	118.376	116.525	114.553	115.336	1.3	1.8	2.7	-9.9	1.6	-3.8
Footwear	127.689	127.444	127.691	126.425	-.5	-4.4	1.3	-3.9	-2.4	-1.3
Transportation	192.130	193.376	196.286	196.010	11.0	-9.3	8.4	8.3	.3	8.4
Private transportation	188.845	190.087	193.039	192.616	11.6	-10.2	9.0	8.2	.1	8.6
New and used motor vehicles ²	97.221	96.958	96.498	96.178	5.5	1.6	4.8	-4.2	3.5	.2
New vehicles	139.526	139.661	139.363	138.938	-2.6	.4	1.9	-1.7	-1.1	.1
Used cars and trucks	146.935	146.033	144.761	144.095	19.0	4.7	9.8	-7.5	11.6	.8
Motor fuel	234.907	239.792	251.389	250.312	25.9	-31.6	20.1	28.9	-7.2	24.4
Gasoline (all types)	233.750	237.478	248.433	250.194	23.0	-29.1	15.7	31.3	-6.6	23.2
Motor vehicle parts and equipment ¹	137.612	137.728	138.153	138.654	4.1	1.4	4.3	3.1	2.8	3.7
Motor vehicle maintenance and repair ¹	251.084	251.938	252.546	252.610	.8	2.2	2.0	2.5	1.5	2.2
Public transportation	247.825	248.885	249.803	254.162	-3.0	13.9	-4.5	10.6	5.1	2.8
Medical care	390.299	392.737	393.364	393.839	5.2	2.9	1.9	3.7	4.0	2.8
Medical care commodities ¹	306.541	307.322	307.539	308.332	5.9	2.8	.1	2.4	4.4	1.2
Medical care services	414.900	417.992	418.780	419.099	5.0	2.9	2.5	4.1	3.9	3.3
Professional services	332.739	334.108	333.960	334.892	3.8	1.4	4.0	2.6	2.5	3.3

See footnotes at end of table.

Table 5. Consumer Price Index for Urban Wage Earners and Clerical Workers (CPI-W): Seasonally adjusted U.S. city average, by expenditure category and commodity and service group-Continued

(1982-84=100, unless otherwise noted)

CPI-W	Seasonally adjusted indexes				Seasonally adjusted annual rate percent change for					
					3 months ended—			6 months ended—		
	Aug. 2010	Sep. 2010	Oct. 2010	Nov. 2010	Feb. 2010	May 2010	Aug. 2010	Nov. 2010	May 2010	Nov. 2010
Expenditure category										
Hospital and related services ³	609.797	618.805	622.544	621.699	10.1	7.8	3.2	8.0	8.9	5.6
Recreation ²	109.813	109.532	109.427	109.238	-1.4	-4	-9	-2.1	-9	-1.5
Video and audio ²	99.260	99.299	99.197	99.112	-3.3	-2.0	-1.6	-6	-2.7	-1.1
Education and communication ²	125.272	125.137	125.048	125.128	2.2	1.9	1.1	-5	2.0	.3
Education ²	197.914	197.532	197.794	198.587	5.2	5.5	3.4	1.4	5.4	2.4
Educational books and supplies	504.799	507.899	509.466	512.598	5.6	3.2	-2.9	6.3	4.4	1.6
Tuition, other school fees, and childcare	557.331	555.849	556.496	558.619	5.2	5.7	4.0	.9	5.5	2.5
Communication ²	87.388	87.340	87.168	87.040	-.1	-2	-3	-1.6	.0	-9
Information and information processing ^{1 2}	85.201	85.154	84.978	84.846	-.1	-2	-3	-1.7	-2	-1.0
Telephone services ^{1 2}	102.239	102.325	102.135	101.975	-1.5	.2	.5	-1.0	-6	-2
Information technology, hardware and services ^{1 6}	9.947	9.891	9.864	9.849	4.4	-1.9	-3.2	-3.9	1.2	-3.5
Personal computers and peripheral equipment ⁷	76.335	76.253	75.608	75.329	-6.4	-5.9	.6	-5.2	-6.1	-2.3
Other goods and services	413.142	413.007	411.642	412.582	1.4	1.5	6.9	-5	1.5	3.1
Tobacco and smoking products ¹	827.609	828.794	826.468	825.644	2.1	6.4	12.8	-9	4.2	5.7
Personal care	205.143	204.868	204.132	204.986	1.0	-1.2	3.7	-3	-1	1.7
Personal care products ¹	161.376	161.132	160.174	160.801	.7	-4.3	2.7	-1.4	-1.8	.6
Personal care services ¹	230.625	230.624	229.635	229.855	-8	3.7	.6	-1.3	1.4	-4
Miscellaneous personal services	356.397	356.667	357.305	358.744	2.9	1.5	2.6	2.7	2.2	2.6
Commodity and service group										
Commodities	177.262	177.809	178.870	178.792	5.1	-5.0	3.6	3.5	-1	3.5
Food and beverages	219.203	219.852	220.003	220.512	1.7	1.7	.5	2.4	1.7	1.4
Commodities less food and beverages	154.660	155.148	156.567	156.242	7.1	-8.8	5.5	4.2	-1.2	4.8
Nondurables less food and beverages	196.796	197.981	200.534	202.072	9.7	-15.0	7.2	11.2	-3.5	9.1
Apparel	119.017	118.544	118.175	118.205	-1.3	-4.2	2.8	-2.7	-2.8	.0
Nondurables less food, beverages, and apparel	249.977	252.387	257.082	258.326	12.1	-17.0	9.7	14.0	-3.6	11.9
Durables	113.188	112.925	112.468	111.966	2.7	-.1	2.7	-4.2	1.3	-.8
Services	257.025	257.115	257.372	257.614	.3	1.5	1.0	.9	.9	1.0
Rent of shelter ⁴	233.137	233.640	233.826	234.549	-1.3	-3	.1	2.4	-.8	1.3
Tenants' and household insurance ^{1 2}	127.526	127.718	128.130	128.556	8.5	2.2	4.8	3.3	5.3	4.0
Gas (piped) and electricity ^{3 5}	192.489	191.045	191.184	189.877	.2	2.5	-.2	-5.3	1.3	-2.8
Water and sewer and trash collection services ²	172.296	173.079	173.455	174.105	8.4	6.3	3.0	4.3	7.4	3.7
Household operations ^{1 2}	153.542	152.851	152.729	152.778	-3.1	4.4	1.0	-2.0	.6	-.5
Transportation services	260.588	261.213	262.351	263.299	2.0	4.7	1.5	4.2	3.3	2.8
Medical care services	414.900	417.992	418.780	419.099	5.0	2.9	2.5	4.1	3.9	3.3
Other services	297.236	296.788	296.741	297.051	1.4	2.2	1.8	-.2	1.8	.8
Special indexes										
All items less food	213.004	213.269	214.020	214.040	2.4	-2.0	2.5	2.0	.2	2.2
All items less shelter	206.024	206.412	207.262	207.268	3.9	-2.1	2.9	2.4	.9	2.7
All items less medical care	206.865	207.125	207.781	207.863	2.2	-1.7	2.2	1.9	.2	2.1
Commodities less food	157.049	157.535	158.926	158.620	6.8	-8.5	5.4	4.1	-1.1	4.7
Nondurables less food	198.552	199.695	202.081	203.602	9.1	-14.2	6.9	10.6	-3.3	8.7
Nondurables less food and apparel	246.763	248.977	252.930	254.423	11.1	-15.8	9.2	13.0	-3.3	11.1
Nondurables	208.421	209.473	211.654	211.827	5.4	-7.4	4.4	6.7	-1.2	5.6
Services less rent of shelter ⁴	251.873	251.937	252.325	252.500	2.3	3.1	1.2	1.0	2.7	1.1
Services less medical care services	245.645	245.846	246.090	246.592	-.1	1.3	.5	1.6	.6	1.0
Energy	209.481	211.343	217.469	216.534	14.9	-18.7	10.3	14.2	-3.3	12.2
All items less energy	215.528	215.669	215.670	215.889	.9	.9	1.2	.7	.9	1.0
All items less food and energy	215.269	215.303	215.274	215.434	.7	.7	1.4	.3	.7	.9
Commodities less food and energy commodities	146.280	146.012	145.595	145.415	1.7	-1.1	2.3	-2.3	.3	-.1
Energy commodities	237.307	242.121	253.766	253.090	26.1	-30.7	18.4	29.4	-6.5	23.7
Services less energy services	264.048	264.313	264.583	265.001	.3	1.4	1.1	1.5	.9	1.3

¹ Not seasonally adjusted.

² Indexes on a December 1997=100 base.

³ This index series was calculated using a Laspeyres estimator. All other item stratum index series were calculated using a geometric means estimator.

⁴ Indexes on a December 1984=100 base

⁵ In January, 2011, this series will be re-titled Energy services.

⁶ Indexes on a December 1988=100 base.

⁷ Indexes on a December 2007=100 base.

NOTE: Index applies to a month as a whole, not to any specific date.

Table 6. Consumer Price Index for Urban Wage Earners and Clerical Workers (CPI-W): Selected areas, all items index

(1982-84=100, unless otherwise noted)

CPI-W	Pricing schedule 1	All items									
		Indexes				Percent change to Nov.2010 from—			Percent change to Oct.2010 from—		
		Aug. 2010	Sep. 2010	Oct. 2010	Nov. 2010	Nov. 2009	Sep. 2010	Oct. 2010	Oct. 2009	Aug. 2010	Sep. 2010
U.S. city average	M	214.205	214.306	214.623	214.750	1.3	0.2	0.1	1.5	0.2	0.1
Region and area size²											
Northeast urban	M	231.694	231.566	232.396	232.962	1.7	.6	.2	1.8	.3	.4
Size A - More than 1,500,000	M	231.995	231.881	232.672	233.031	1.5	.5	.2	1.7	.3	.3
Size B/C - 50,000 to 1,500,000 ³	M	140.390	140.295	140.848	141.452	2.1	.8	.4	2.1	.3	.4
Midwest urban	M	204.273	204.442	204.329	204.468	1.4	.0	.1	1.8	.0	-.1
Size A - More than 1,500,000	M	203.593	203.946	203.906	204.064	1.2	.1	.1	1.6	.2	.0
Size B/C - 50,000 to 1,500,000 ³	M	134.426	134.361	134.093	134.112	1.7	-.2	.0	2.0	-.2	-.2
Size D - Nonmetropolitan (less than 50,000)	M	202.896	203.086	203.548	203.937	1.6	.4	.2	1.7	.3	.2
South urban	M	208.740	209.155	209.376	209.352	1.2	.1	.0	1.6	.3	.1
Size A - More than 1,500,000	M	210.831	211.393	211.409	211.222	1.0	-.1	-.1	1.4	.3	.0
Size B/C - 50,000 to 1,500,000 ³	M	133.420	133.680	133.923	133.927	1.4	.2	.0	1.7	.4	.2
Size D - Nonmetropolitan (less than 50,000)	M	215.354	215.346	215.451	215.822	1.1	.2	.2	1.5	.0	.0
West urban	M	216.048	215.804	216.273	216.267	1.0	.2	.0	.7	.1	.2
Size A - More than 1,500,000	M	218.784	218.524	219.017	218.817	1.2	.1	-.1	.9	.1	.2
Size B/C - 50,000 to 1,500,000 ³	M	133.480	133.346	133.622	133.777	.5	.3	.1	.3	.1	.2
Size classes											
A ⁴	M	198.168	198.278	198.576	198.598	1.2	.2	.0	1.4	.2	.2
B/C ³	M	134.581	134.644	134.840	134.969	1.4	.2	.1	1.6	.2	.1
D	M	209.863	209.864	210.160	210.529	1.3	.3	.2	1.5	.1	.1
Selected local areas⁵											
Chicago-Gary-Kenosha, IL-IN-WI	M	206.338	206.897	206.894	206.632	.7	-.1	-.1	1.2	.3	.0
Los Angeles-Riverside-Orange County, CA ...	M	218.752	218.427	219.339	218.694	1.0	.1	-.3	.9	.3	.4
New York-Northern N.J.-Long Island, NY-NJ-CT-PA	M	236.820	236.725	237.483	237.606	1.6	.4	.1	1.9	.3	.3
Boston-Brockton-Nashua, MA-NH-ME-CT	1	-	236.844	-	238.891	.9	.9	-	-	-	-
Cleveland-Akron, OH	1	-	196.787	-	197.530	2.4	.4	-	-	-	-
Dallas-Fort Worth, TX	1	-	205.602	-	204.918	-.2	-.3	-	-	-	-
Washington-Baltimore, DC-MD-VA-WV ⁶	1	-	142.755	-	142.938	1.7	.1	-	-	-	-
Atlanta, GA	2	203.745	-	201.887	-	-	-	-	1.1	-.9	-
Detroit-Ann Arbor-Flint, MI	2	201.359	-	201.864	-	-	-	-	.8	.3	-
Houston-Galveston-Brazoria, TX	2	193.276	-	193.110	-	-	-	-	2.0	-.1	-
Miami-Fort Lauderdale, FL	2	220.790	-	221.497	-	-	-	-	.5	.3	-
Philadelphia-Wilmington-Atlantic City, PA-NJ-DE-MD	2	228.523	-	228.676	-	-	-	-	1.8	.1	-
San Francisco-Oakland-San Jose, CA	2	224.195	-	224.352	-	-	-	-	1.2	.1	-
Seattle-Tacoma-Bremerton, WA	2	223.444	-	223.112	-	-	-	-	.8	-.1	-

¹ Foods, fuels, and several other items priced every month in all areas; most other goods and services priced as indicated:

- M - Every month.
- 1 - January, March, May, July, September, and November.
- 2 - February, April, June, August, October, and December.

² Regions defined as the four Census regions. See technical notes.

³ Indexes on a December 1996=100 base.

⁴ Indexes on a December 1986=100 base.

⁵ In addition, the following metropolitan areas are published semiannually and appear in Tables 34 and 39 of the January and July issues of the CPI Detailed Report: Anchorage, AK; Cincinnati-Hamilton, OH-KY-IN; Denver-Boulder-Greeley, CO; Honolulu, HI; Kansas City, MO-KS; Milwaukee-Racine, WI; Minneapolis-St. Paul, MN-WI; Phoenix-Mesa, AZ; Pittsburgh, PA; Portland-Salem, OR-WA; St. Louis, MO-IL; San Diego, CA;

Tampa-St. Petersburg-Clearwater, FL.

⁶ Indexes on a November 1996=100 base.

- Data not available.

NOTE: Local area indexes are byproducts of the national CPI program. Each local index has a smaller sample size than the national index and is, therefore, subject to substantially more sampling and other measurement error. As a result, local area indexes show greater volatility than the national index, although their long-term trends are similar. Therefore, the Bureau of Labor Statistics strongly urges users to consider adopting the national average CPI for use in their escalator clauses.

NOTE: Index applies to a month as a whole, not to any specific date.

Table 7. Chained Consumer Price Index for All Urban Consumers (C-CPI-U): U.S. city average, by expenditure category and commodity and service group

(December 1999=100, unless otherwise noted)

C-CPI-U	Relative importance, 2007-2008	Unadjusted indexes		Unadjusted percent change to Nov. 2010 from—	
		Oct. 2010	Nov. 2010	Nov. 2009	Oct. 2010
Expenditure category					
All items	100.000	126.614	126.650	1.0	0.0
Food and beverages	14.519	128.946	128.954	1.4	.0
Food	13.493	128.904	128.924	1.5	.0
Food at home	7.780	123.746	123.690	1.7	.0
Food away from home	5.712	135.954	136.088	1.3	.1
Alcoholic beverages	1.027	129.959	129.808	.7	-.1
Housing	42.074	128.240	128.047	-.1	-.2
Shelter	32.119	131.161	131.182	.2	.0
Fuels and utilities	5.231	158.349	156.764	.5	-1.0
Household furnishings and operations	4.724	92.140	91.833	-2.9	-.3
Apparel	3.772	91.154	90.474	-1.3	-.7
Transportation	17.199	132.737	133.734	3.9	.8
Private transportation	16.013	133.434	134.367	3.9	.7
Public transportation	1.186	123.470	125.263	4.5	1.5
Medical care	6.294	151.393	151.549	2.9	.1
Medical care commodities	1.570	133.097	133.404	2.5	.2
Medical care services	4.723	158.118	158.214	3.1	.1
Recreation	6.625	102.437	102.131	-1.8	-.3
Education and communication	6.288	113.108	113.029	1.2	-.1
Education	2.804	187.174	187.238	3.7	.0
Communication	3.484	72.869	72.757	-.7	-.2
Other goods and services	3.229	138.471	138.820	1.6	.3
Commodity and service group					
Services	59.383	135.745	135.698	.8	.0
Commodities	40.617	115.403	115.543	1.1	.1
Durables	10.376	80.612	80.299	-1.1	-.4
Nondurables	30.241	133.571	133.968	1.9	.3
All items less food and energy	76.901	120.149	120.113	.5	.0
Energy	9.606	187.484	188.456	3.9	.5

Indexes for 2010 are initial estimates. Indexes for 2009 are interim adjustments.
NOTE: Index applies to a month as a whole, not to any specific date.