

Transmission of material in this release is embargoed until
8:30 a.m. (EDT) Thursday, April 10, 2014

USDL-14-0566

Technical information: (202) 691-7101 • MXPinfo@bls.gov • www.bls.gov/mxp
Media contact: (202) 691-5902 • PressOffice@bls.gov

U.S. IMPORT AND EXPORT PRICE INDEXES – MARCH 2014

U.S. import prices advanced 0.6 percent in March, after a 0.9-percent increase in February, the U.S. Bureau of Labor Statistics reported today. Higher fuel prices and nonfuel prices each contributed to the rise in import prices in March. U.S. export prices increased 0.8 percent in March following a 0.7-percent advance the previous month.

Chart 1. One-month percent change in the Import Price Index: March 2013 – March 2014

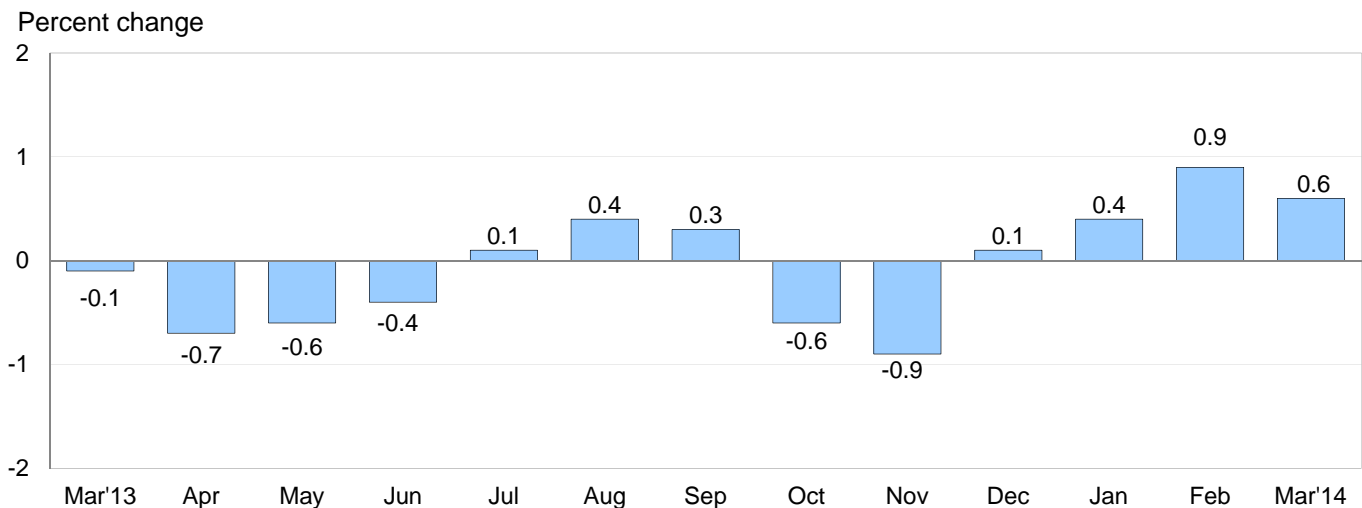
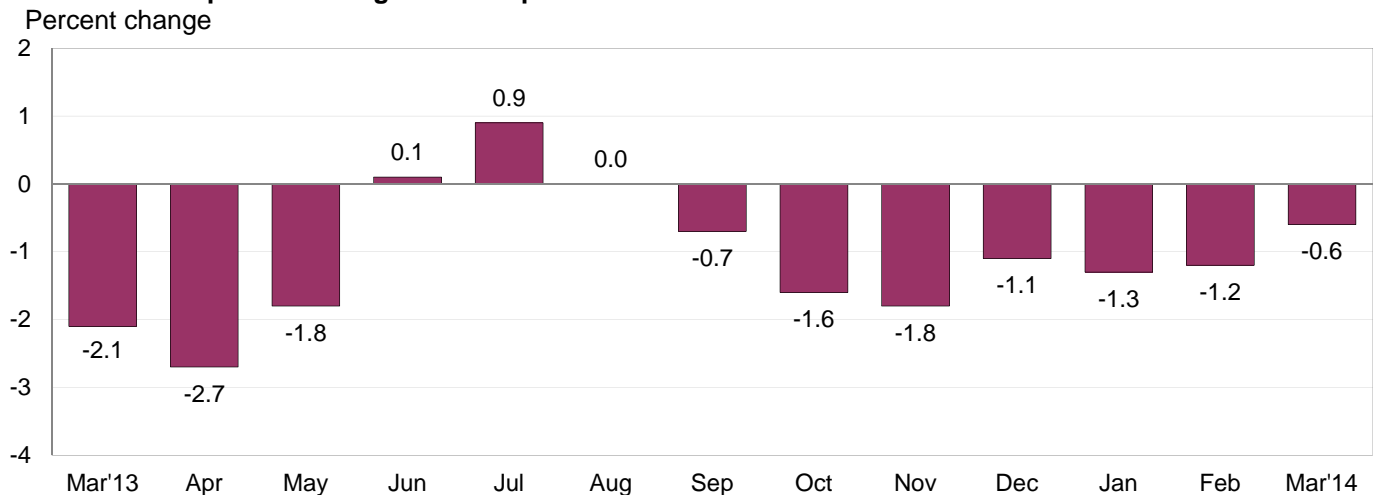


Chart 2. 12-month percent change in the Import Price Index: March 2013 – March 2014



All Imports: Import prices rose 0.6 percent in March and increased 1.9 percent over the first quarter of 2014. The advance from December 2013 to March 2014 was the largest 3-month rise since the index increased 2.5 percent between July and October 2012. Despite the recent advances, import prices fell 0.6 percent over the past year. Import prices have not recorded a 12-month rise since the index increased 0.9 percent for the year ended July 2013.

Fuel Imports: Fuel prices advanced 1.2 percent in March following a 5.3-percent rise the previous month. The March increase was driven by a 21.7-percent advance in natural gas prices. The price index for natural gas rose 177.7 percent for the 6-month period from September 2013 to March 2014. Petroleum prices also advanced in March, ticking up 0.1 percent. Overall fuel prices increased 0.8 percent for the year ended in March as a 115.3-percent jump in natural gas prices more than offset a 2.4-percent drop in petroleum prices. The increase in natural gas prices over the past 12 months was the largest year-over-year advance for the index since a 122.3-percent rise in October 2005 in the aftermath of hurricane Katrina.

All Imports Excluding Fuel: Prices for nonfuel imports also increased in March, rising 0.3 percent, after edging down 0.1 percent in February. The March increase was led by a 3.7-percent advance in foods, feeds, and beverages prices, although higher nonfuel industrial supplies and materials prices and prices for capital goods also contributed to the advance. The price indexes for consumer goods and automotive vehicles recorded no change in March. Despite the March rise, nonfuel import prices declined 0.8 percent over the past 12 months.

Table A. Percent change in import and export price indexes, selected categories

Month	IMPORTS			EXPORTS		
	All imports	Fuel imports	Nonfuel imports	All exports	Agricultural exports	Non-agricultural exports
2013						
March.....	-0.1	0.0	-0.1	-0.5	-1.8	-0.3
April.....	-0.7	-2.4	-0.2	-0.6	-2.1	-0.5
May.....	-0.6	-1.7	-0.4	-0.5	1.1	-0.7
June.....	-0.4	-0.7	-0.3	-0.1	0.8	-0.2
July.....	0.1	1.7	-0.4	-0.2	-0.3	-0.2
August.....	0.4	2.6	-0.2	-0.5	-4.2	0.0
September.....	0.3	1.0	0.1	0.4	0.6	0.3
October.....	-0.6	-3.3	0.1	-0.6	-1.3	-0.5
November.....	-0.9	-4.2	0.0	0.2	-0.2	0.1
December.....	0.1	0.7	-0.1	0.4	0.3	0.4
2014						
January.....	0.4	1.0 ^r	0.3	0.3 ^r	-0.1 ^r	0.4 ^r
February.....	0.9	5.3 ^r	-0.1 ^r	0.7 ^r	1.4 ^r	0.6
March.....	0.6	1.2	0.3	0.8	2.7	0.5
Mar. 2012 to 2013.....	-2.1	-6.6	-0.4	0.2	8.7	-0.8
Mar. 2013 to 2014.....	-0.6	0.8	-0.8	0.2	-1.6	0.4

r Revised

Chart 3. One-month percent change in the Export Price Index: March 2013 – March 2014

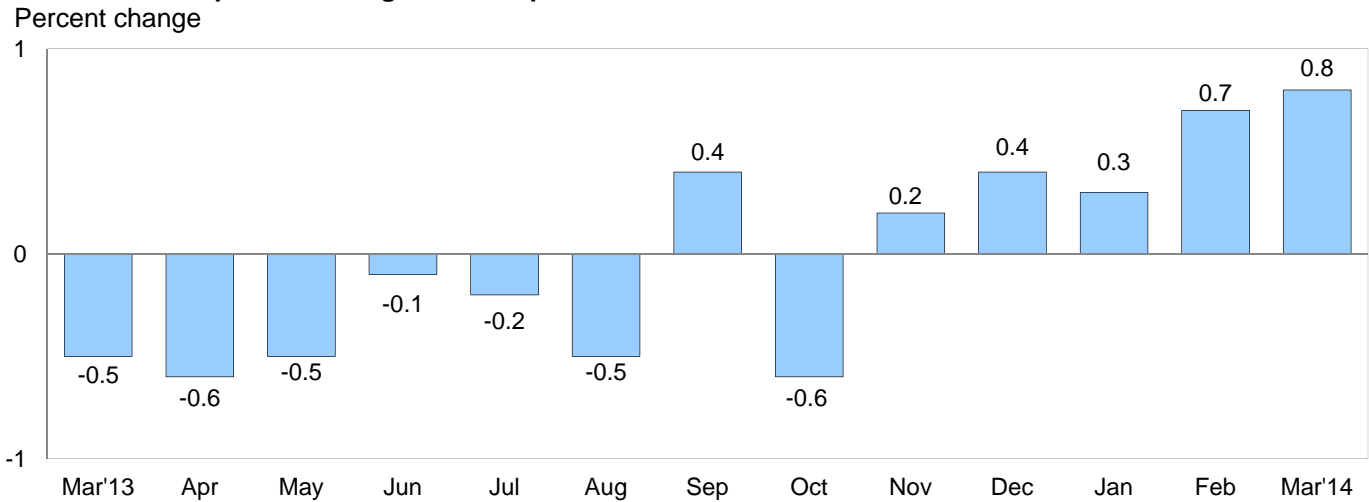
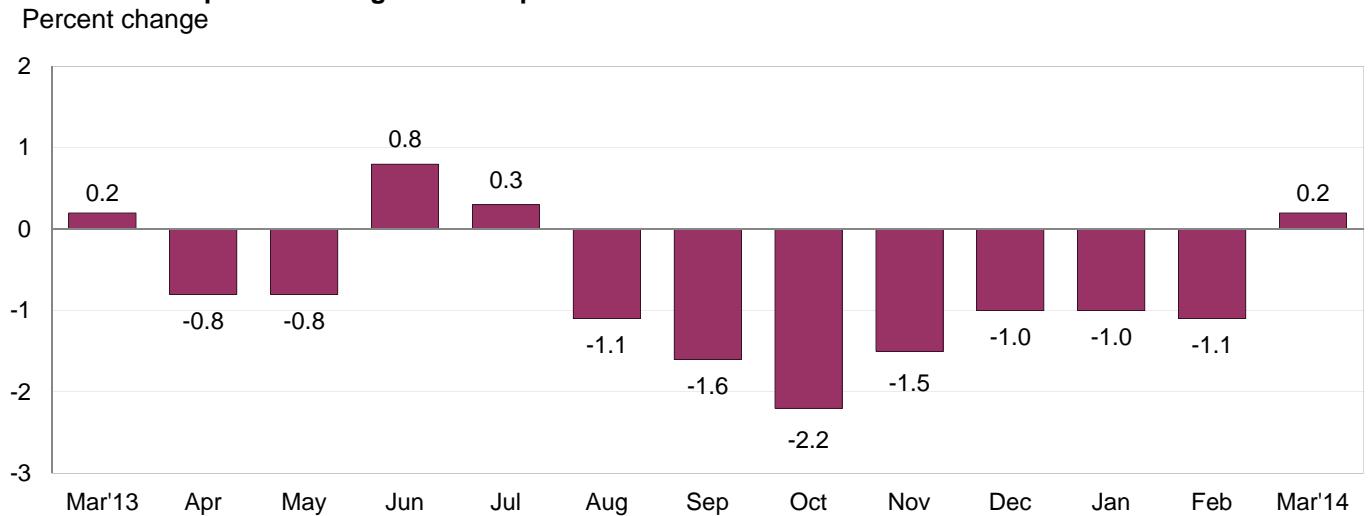


Chart 4. 12-month percent change in the Export Price Index: March 2013 – March 2014



All Exports: Export prices advanced 0.8 percent in March, the largest monthly increase for the index since a 0.8-percent rise in September 2012. Rising prices for both agricultural exports and nonagricultural exports each contributed to the advance in export prices. Prices for exports also rose over the past year, increasing 0.2 percent. The year-over-year advance was the first 12-month rise since a 0.3-percent increase between July 2012 and July 2013.

Agricultural Exports: The price index for agricultural exports increased 2.7 percent in March, after a 1.4-percent advance in February. The March rise was driven by a 6.6-percent increase in soybeans prices, a 7.8-percent gain in wheat prices, a 2.8-percent advance in meat prices, and a 7.0-percent rise in corn prices. Prices for agricultural exports decreased 1.6 percent for the year ended in March, led by falling prices over the past year for corn, soybeans, and wheat.

All Exports Excluding Agriculture: Prices for nonagricultural exports increased 0.5 percent in March following a 0.6-percent rise in February. Higher prices for nonagricultural industrial supplies and materials, capital goods, and consumer goods all contributed to the advance. The price index for automotive vehicles was unchanged in March.

SELECTED MARCH HIGHLIGHTS

Import Prices

Imports by Locality of Origin: Import prices from China edged down 0.1 percent in March, after increasing 0.2 percent the previous month. The March decline was driven by a 1.0-percent decrease in the price index for communications equipment manufacturing. Prices for imports from China fell 0.3 percent over the past year. The price index for imports from Japan ticked up 0.1 percent in March, the first monthly advance for the index since a 0.1-percent increase in October 2012. Import prices from Canada rose 1.7 percent in March, led by higher natural gas prices. The price indexes for imports from Mexico and the European Union also advanced in March, rising 1.0 percent and 0.1 percent, respectively.

Nonfuel Industrial Supplies and Materials: Nonfuel industrial supplies and materials increased 0.6 percent in March, after ticking up 0.1 percent in February. The March advance was driven by a 1.0-percent rise in chemicals prices and a 0.8-percent increase in unfinished metals prices.

Finished Goods: Import finished goods prices were mostly unchanged in March. The price index for capital goods ticked up 0.1 percent, led by a 0.8-percent rise in semiconductor prices. Despite the advance, prices for capital goods fell 0.6 percent over the past 12 months. Consumer goods prices and prices for automotive vehicles each recorded no change in March.

Foods, Feeds, and Beverages: Prices for foods, feeds, and beverages rose 3.7 percent in March, the largest monthly gain for the index since a 4.3-percent increase in March 2011. The March 2014 advance was driven by a 14.0-percent rise in fruit prices, the largest one-month increase for that index since the index was first published monthly in December 1993.

Transportation Services: Import air passenger fares declined 3.4 percent in March, led by a 5.1-percent drop in European fares and a 3.4-percent decrease in Asian fares. Despite the March decrease, import air passenger fares rose 4.8 percent over the past year. Import air freight prices increased 0.4 percent in March, after decreasing 0.6 percent in February. The price index for import air freight advanced 1.2 percent for the year ended in March.

Export Prices

Nonagricultural Industrial Supplies and Materials: Nonagricultural industrial supplies and materials prices advanced 1.3 percent in March following a 1.6-percent increase the previous month. A 2.5-percent rise in fuel prices was the largest contributor to the advance in March.

Finished Goods: Finished goods prices were mostly up in March. Capital goods prices increased 0.2 percent following a 0.3-percent advance in February and a 0.2-percent rise in January. Prices for consumer goods advanced 0.3 percent, after falling 0.4 percent the previous month. The price index for automotive vehicles was unchanged in March.

Transportation Services: Export air passenger fares increased 4.3 percent in March, as higher Asian fares, Latin American/Caribbean fares, and European fares all contributed to the advance. Despite the March rise, export air passenger fares declined 3.0 percent over the past 12 months. The price index for export air freight was unchanged in March and rose 1.5 percent over the past year.

Import and Export Price Index data for April 2014 are scheduled for release on Tuesday, May 13, 2014 at 8:30 a.m. (EDT).

Table 1. U.S. import price indexes and percent changes for selected categories of goods: March 2013 to March 2014

[2000=100, unless otherwise noted]

Description	End Use	Relative importance Feb. 2014 ¹	Index		Percent change				
			Feb. 2014	Mar. 2014	Annual	Monthly			
					Mar. 2013 to Mar. 2014	Nov. 2013 to Dec. 2013	Dec. 2013 to Jan. 2014	Jan. 2014 to Feb. 2014	Feb. 2014 to Mar. 2014
All commodities		100.000	139.6	140.4	-0.6	0.1	0.4	0.9	0.6
All imports excluding food and fuels (Dec. 2010=100)		74.723	102.0	102.2	-1.2	-0.2	0.3	-0.1	0.2
All imports excluding petroleum		81.244	115.9	116.6	0.1	0.2	0.5	0.1	0.6
All imports excluding fuels (Dec. 2001=100)		79.909	119.2	119.6	-0.8	-0.1	0.3	-0.1	0.3
Foods, feeds, & beverages	0	5.186	175.7	182.2	4.9	0.5	0.6	-0.7	3.7
Agricultural foods, feeds & beverages, excluding distilled beverages.....	00	3.895	189.9	199.1	2.4	0.7	-0.1	-1.0	4.8
Nonagricultural foods (fish, distilled beverages).....	01	1.291	143.7	143.8	13.8	-0.3	3.1	0.3	0.1
Industrial supplies & materials	1	32.949	251.8	254.1	-1.4	0.3	0.7	3.2	0.9
Industrial supplies & materials excluding petroleum.....		14.193	164.5	168.0	0.5	1.0	1.3	1.4	2.1
Industrial supplies & materials excluding fuels (Dec. 2001=100).....		12.858	178.9	179.9	-4.6	-0.4	0.2	0.1	0.6
Industrial supplies & materials, durable....		7.758	167.0	168.0	-5.6	-0.5	-0.6	0.7	0.6
Industrial supplies & materials nondurable excluding petroleum.....		5.099	160.6	167.0	8.5	2.9	3.6	2.2	4.0
Fuels & lubricants.....	10	20.092	345.1	349.1	0.8	0.7	1.0	5.3	1.2
Petroleum & petroleum products.....	100	18.757	375.8	376.2	-2.4	-0.2	0.3	4.7	0.1
Crude.....	10000	14.017	382.5	387.5	-2.5	-1.0	0.5	4.4	1.3
Fuels, n.e.s.-coals & gas.....	101	1.162	199.9	236.4	90.8	26.4	17.2	17.1	18.3
Gas-natural.....	10110	1.011	193.7	235.8	115.3	31.2	21.4	18.9	21.7
Paper & paper base stocks.....	11	0.537	113.6	112.6	-0.1	-0.3	-0.5	0.3	-0.9
Materials associated with nondurable supplies & materials.....	12	4.636	168.5	169.7	-3.0	-0.3	1.3	-1.0	0.7
Selected building materials.....	13	1.049	143.2	143.0	-4.0	-0.1	0.1	0.5	-0.1
Unfinished metals related to durable goods.....	14	3.492	236.8	238.8	-9.4	-1.0	-0.7	1.2	0.8
Finished metals related to durable goods.....	15	1.625	156.3	157.5	-1.9	0.1	0.0	0.3	0.8
Nonmetals related to durable goods.....	16	1.519	111.4	111.6	-2.4	-0.2	-1.1	0.3	0.2
Capital goods	2	24.854	92.3	92.4	-0.6	-0.1	0.1	-0.3	0.1
Electric generating equipment.....	20	2.995	119.4	119.4	-0.1	0.0	0.2	-0.1	0.0
Nonelectrical machinery.....	21	19.926	85.0	85.1	-0.8	-0.1	0.1	-0.4	0.1
Transportation equipment excluding motor vehicles (Dec. 2001=100).....	22	1.932	136.2	136.2	0.3	0.0	0.1	0.1	0.0
Automotive vehicles, parts & engines	3	13.523	113.1	113.1	-1.6	-0.1	-0.1	-0.1	0.0
Consumer goods, excluding automotives	4	23.488	108.1	108.1	0.4	-0.2	0.7	0.1	0.0
Nondurables, manufactured.....	40	11.326	117.9	117.8	1.7	0.0	1.3	0.1	-0.1
Durables, manufactured.....	41	10.975	97.9	97.9	-1.3	-0.3	0.0	0.0	0.0
Nonmanufactured consumer goods.....	42	1.187	120.2	120.4	3.4	0.0	1.2	1.4	0.2

¹ Relative importance figures are based on 2012 trade values.

NOTES: Data may be revised in each of the three months after original publication.

Dash = Not available

Table 2. U.S. export price indexes and percent changes for selected categories of goods: March 2013 to March 2014

[2000=100, unless otherwise noted]

Description	End Use	Relative importance Feb. 2014 ¹	Index		Percent change				
			Feb. 2014	Mar. 2014	Annual	Monthly			
					Mar. 2013 to Mar. 2014	Nov. 2013 to Dec. 2013	Dec. 2013 to Jan. 2014	Jan. 2014 to Feb. 2014	Feb. 2014 to Mar. 2014
All commodities.....		100.000	133.6	134.7	0.2	0.4	0.3	0.7	0.8
Agricultural commodities.....		9.842	215.6	221.4	-1.6	0.3	-0.1	1.4	2.7
All exports excluding food and fuels (Dec. 2010=100).....		80.355	102.2	102.5	-0.6	-0.1	0.3	0.2	0.3
Nonagricultural commodities.....		90.158	127.7	128.4	0.4	0.4	0.4	0.6	0.5
Foods, feeds, & beverages.....	0	8.965	214.8	220.7	-2.1	0.5	-0.4	1.2	2.7
Agricultural foods, feeds & beverages, excluding distilled beverages.....	00	8.350	218.1	224.4	-2.2	0.5	-0.3	1.2	2.9
Nonagricultural foods (fish, distilled beverages).....	01	0.615	187.5	187.1	-2.1	1.1	-2.5	1.5	-0.2
Industrial supplies & materials.....	1	34.044	182.6	184.8	0.9	1.0	0.9	1.7	1.2
Industrial supplies & materials, durable....		11.046	170.2	171.4	-6.2	-0.8	-0.3	-0.1	0.7
Industrial supplies & materials, nondurable.....		22.997	190.1	193.0	4.8	2.0	1.4	2.5	1.5
Agricultural industrial supplies & materials.....	10	1.492	206.9	209.6	2.2	0.0	0.9	2.7	1.3
Nonagricultural industrial supplies & materials.....		32.552	181.8	184.1	0.9	1.0	0.9	1.6	1.3
Fuels & lubricants.....	11	10.680	281.5	288.5	9.1	4.5	1.9	4.1	2.5
Nonagricultural supplies & materials excluding fuels & building materials.....	12	20.847	166.1	167.2	-3.0	-0.4	0.3	0.5	0.7
Selected building materials.....	13	1.025	128.8	128.8	6.7	0.4	1.7	0.1	0.0
Capital goods.....	2	36.031	107.0	107.2	0.5	0.0	0.2	0.3	0.2
Electrical generating equipment.....	20	3.640	114.9	115.6	0.6	0.0	0.3	-0.1	0.6
Nonelectrical machinery.....	21	25.463	95.3	95.5	-0.1	-0.1	0.1	-0.1	0.2
Transportation equipment excluding motor vehicles (Dec. 2001=100).....	22	6.928	155.6	156.0	2.9	0.1	0.8	1.6	0.3
Automotive vehicles, parts & engines.....	3	9.366	113.6	113.6	0.1	0.0	0.1	-0.1	0.0
Consumer goods, excluding automotives.....	4	11.594	114.4	114.7	-0.9	0.1	-0.1	-0.4	0.3
Nondurables, manufactured.....	40	5.325	111.1	110.8	-3.7	-0.1	-1.6	-1.2	-0.3
Durables, manufactured.....	41	4.949	112.3	112.1	-0.2	0.1	0.5	-0.1	-0.2

¹ Relative importance figures are based on 2012 trade values.

NOTES: Data may be revised in each of the three months after original publication.

Dash = Not available

Table 3. U.S. import price indexes and percent changes for selected categories of goods: March 2013 to March 2014

[December 2005=100, unless otherwise noted]

Description	NAICS	Relative importance Feb. 2014 ¹	Index		Percent change				
			Feb. 2014	Mar. 2014	Annual	Monthly			
					Mar. 2013 to Mar. 2014	Nov. 2013 to Dec. 2013	Dec. 2013 to Jan. 2014	Jan. 2014 to Feb. 2014	Feb. 2014 to Mar. 2014
Nonmanufactured articles.....		17.399	171.4	176.7	3.2	0.6	1.4	4.7	3.1
Agriculture, forestry, fishing and hunting.....	11	1.733	171.0	191.8	8.4	1.7	-0.1	-1.9	12.2
Crop production.....	111	1.297	174.4	203.1	11.1	2.8	-0.7	-2.8	16.5
Forestry and logging (Dec. 2012=100).....	113	0.158	90.1	87.0	-17.2	-3.5	1.2	-1.9	-3.4
Mining.....	21	15.666	171.2	174.7	2.6	0.5	1.6	5.5	2.0
Mining (except oil and gas) (Dec. 2006=100).....	212	0.253	126.0	124.9	-6.8	0.4	-4.8	1.5	-0.9
Manufactured articles.....		82.200	116.3	116.4	-1.0	-0.1	0.3	0.3	0.1
Manufactured goods, part 1.....	31	10.433	124.7	125.4	1.5	-0.1	0.4	0.1	0.6
Food manufacturing.....	311	3.056	158.8	160.8	4.7	-0.6	1.1	0.6	1.3
Beverage and tobacco product manufacturing.....	312	0.921	115.3	115.4	1.7	0.1	0.3	0.3	0.1
Textile mills (Dec. 2011=100).....	313	0.355	102.1	102.1	0.2	0.5	0.5	0.0	0.0
Textile product mills.....	314	0.763	114.4	114.3	-0.9	-0.1	0.2	-0.2	-0.1
Apparel manufacturing.....	315	3.699	110.2	110.6	0.0	0.2	-0.1	-0.3	0.4
Leather and allied product manufacturing.....	316	1.638	122.3	122.8	1.2	0.0	0.2	0.2	0.4
Manufactured goods, part 2.....	32	17.702	138.9	138.0	-1.1	0.4	1.0	1.2	-0.6
Wood product manufacturing.....	321	0.634	122.9	122.8	-5.5	-0.2	0.1	0.6	-0.1
Paper manufacturing.....	322	0.978	110.7	110.2	0.1	-0.1	-0.3	-0.1	-0.5
Printing and related support activities (Dec. 2013=100).....	323	0.188	100.2	100.2	-	-	0.2	0.0	0.0
Petroleum and coal products manufacturing.....	324	4.227	167.9	163.1	-3.7	1.7	-0.9	6.1	-2.9
Chemical manufacturing.....	325	8.890	136.7	136.9	0.4	0.0	2.5	-0.2	0.1
Plastics and rubber products manufacturing.....	326	1.949	123.4	123.2	-3.0	0.1	-0.6	-0.2	-0.2
Nonmetallic mineral product manufacturing.....	327	0.836	130.4	130.3	1.1	0.0	0.2	0.2	-0.1
Manufactured goods, part 3.....	33	54.065	107.8	107.9	-1.6	-0.2	0.0	0.0	0.1
Primary metal manufacturing.....	331	4.105	156.0	157.2	-9.0	-0.9	-0.4	1.0	0.8
Fabricated metal product manufacturing.....	332	2.659	126.2	126.5	-2.2	-0.2	0.0	-0.1	0.2
Machinery manufacturing.....	333	6.879	121.4	121.6	0.0	-0.1	0.6	-0.2	0.2
Computer and electronic product manufacturing.....	334	15.943	80.1	80.1	-1.4	-0.1	-0.1	-0.4	0.0
Electrical equipment, appliance, and component manufacturing.....	335	4.075	118.4	118.3	-1.3	-0.3	-0.3	0.0	-0.1
Transportation equipment manufacturing.....	336	14.374	111.6	111.6	-0.9	0.0	0.0	-0.1	0.0
Furniture and related product manufacturing.....	337	1.342	114.8	115.1	0.7	0.1	0.3	-0.1	0.3
Miscellaneous manufacturing.....	339	4.688	121.4	122.2	1.1	-0.2	0.2	0.2	0.7

¹ Relative importance figures are based on 2012 trade values.

NOTES: Data may be revised in each of the three months after original publication.

Dash = Not available

Table 4. U.S. export price indexes and percent changes for selected categories of goods: March 2013 to March 2014

[December 2005=100, unless otherwise noted]

Description	NAICS	Relative importance Feb. 2014 ¹	Index		Percent change				
			Feb. 2014	Mar. 2014	Annual	Monthly			
					Mar. 2013 to Mar. 2014	Nov. 2013 to Dec. 2013	Dec. 2013 to Jan. 2014	Jan. 2014 to Feb. 2014	Feb. 2014 to Mar. 2014
Nonmanufactured articles.....		7.972	178.8	187.1	7.5	1.3	5.2	5.9	4.6
Agriculture, forestry, fishing and hunting.....	11	4.964	196.1	202.9	-5.8	0.4	-0.1	1.2	3.5
Crop production.....	111	4.569	202.7	209.8	-6.3	0.3	0.2	1.4	3.5
Mining.....	21	3.008	123.1	131.1	40.2	3.8	16.6	14.6	6.5
Mining (except oil and gas).....	212	1.338	100.4	100.1	-6.5	-0.1	0.0	-0.8	-0.3
Manufactured articles.....		90.134	120.8	121.4	-0.2	0.3	-0.1	0.4	0.5
Manufactured goods, part 1.....	31	6.958	152.5	154.2	1.4	0.5	0.0	0.7	1.1
Food manufacturing.....	311	4.856	174.2	176.7	1.1	0.5	-0.2	0.6	1.4
Beverage and tobacco product manufacturing.....	312	0.550	125.1	125.1	-2.4	-0.6	-2.1	2.9	0.0
Leather and allied product manufacturing (Dec. 2013=100).....	316	0.277	102.2	104.9	-	-	1.4	0.8	2.6
Manufactured goods, part 2.....	32	26.390	134.3	135.2	0.1	1.1	-0.4	0.5	0.7
Wood product manufacturing.....	321	0.454	123.8	127.1	9.6	0.1	0.8	-0.3	2.7
Paper manufacturing.....	322	1.812	125.0	125.6	3.9	0.1	0.5	1.3	0.5
Petroleum and coal products manufacturing.....	324	7.724	175.3	178.8	4.6	5.0	-0.6	1.9	2.0
Chemical manufacturing.....	325	13.222	127.9	128.0	-3.0	-0.2	-0.5	-0.1	0.1
Plastics and rubber products manufacturing.....	326	2.139	118.6	118.0	-1.3	-0.3	-0.8	-0.3	-0.5
Nonmetallic mineral product manufacturing.....	327	0.761	112.4	112.6	1.5	0.0	0.0	0.4	0.2
Manufactured goods, part 3.....	33	56.786	112.5	112.8	-0.6	-0.1	0.1	0.3	0.3
Primary metal manufacturing.....	331	4.561	146.3	148.7	-11.2	-1.7	-1.7	1.2	1.6
Fabricated metal product manufacturing.....	332	2.759	131.5	130.5	-1.1	0.4	0.0	-0.2	-0.8
Machinery manufacturing.....	333	11.575	123.4	123.5	1.2	0.1	0.3	0.0	0.1
Computer and electronic product manufacturing.....	334	13.665	87.7	87.9	-1.5	-0.2	-0.1	-0.2	0.2
Electrical equipment, appliance, and component manufacturing.....	335	3.441	114.4	115.0	1.1	0.0	0.5	0.2	0.5
Transportation equipment manufacturing.....	336	15.452	119.4	119.5	1.4	0.0	0.3	0.7	0.1
Furniture and related product manufacturing (Dec. 2011=100).....	337	0.353	106.1	106.1	0.6	0.0	0.3	-1.4	0.0
Miscellaneous manufacturing.....	339	4.979	123.7	125.2	2.4	0.3	0.9	0.5	1.2

¹ Relative importance figures are based on 2012 trade values.

NOTES: Data may be revised in each of the three months after original publication.

Dash = Not available

Table 5. U.S. import price indexes and percent changes for selected categories of goods: March 2013 to March 2014

[2000=100, unless otherwise noted]

Description	Harmoni- zied system	Relative importance Feb. 2014 ¹	Index		Percent change				
			Feb. 2014	Mar. 2014	Annual	Monthly			
					Mar. 2013 to Mar. 2014	Nov. 2013 to Dec. 2013	Dec. 2013 to Jan. 2014	Jan. 2014 to Feb. 2014	Feb. 2014 to Mar. 2014
Live animals; animal products.....	I	1.294	195.6	198.7	15.3	-0.2	2.8	1.2	1.6
Meat and edible meat offal.....	02	0.276	231.9	242.7	11.7	0.8	0.9	3.2	4.7
Fish and crustaceans, molluscs and other aquatic invertebrates.....	03	0.736	149.0	149.1	19.1	-0.6	4.1	0.4	0.1
Vegetable products.....	II	1.615	195.7	211.1	-1.6	2.7	-0.1	-3.2	7.9
Edible vegetables, roots, and tubers.....	07	0.348	328.0	352.9	-6.7	4.4	2.1	-18.2	7.6
Edible fruit and nuts; peel of citrus fruit or melons.....	08	0.439	109.0	127.7	7.7	2.0	-1.4	-1.4	17.2
Coffee, tea, mate and spices.....	09	0.331	235.6	254.4	1.6	3.8	-2.7	7.1	8.0
Animal or vegetable fats and oils (Dec. 2009=100).....	III	0.240	111.3	119.7	0.3	-0.4	-2.2	-1.2	7.5
Prepared foodstuffs, beverages, and tobacco.....	IV	2.473	159.4	160.4	1.9	-0.5	0.2	0.3	0.6
Sugars and sugar confectionary (Dec. 2012=100).....	17	0.162	86.4	87.6	-13.1	-2.1	-1.9	0.8	1.4
Cocoa and cocoa preparations (Dec. 2009=100).....	18	0.217	99.2	106.2	23.1	-0.9	0.4	-1.7	7.1
Preparations of cereals, flour, starch or milk; bakers' wares (Dec. 2007=100).....	19	0.244	131.3	131.2	-0.5	0.0	0.5	0.0	-0.1
Preparations of vegetables, fruit, nuts, or other parts of plants.....	20	0.306	169.1	169.0	4.9	-2.6	1.9	2.7	-0.1
Beverages, spirits, and vinegar.....	22	0.937	126.0	125.8	1.0	0.2	0.2	0.3	-0.2
Mineral products.....	V	19.931	346.6	351.0	0.7	0.6	0.9	5.5	1.3
Mineral fuels, oils and residuals, bituminous substances and mineral waxes.....	27	19.667	343.7	348.1	0.8	0.6	1.0	5.6	1.3
Products of the chemical or allied industries.....	VI	8.118	151.8	152.0	0.4	0.1	2.3	0.0	0.1
Inorganic chemicals.....	28	0.594	301.7	305.1	-16.5	-0.7	-0.4	-2.3	1.1
Organic chemicals.....	29	2.428	137.4	137.0	-0.8	0.9	0.1	0.4	-0.3
Pharmaceutical products.....	30	3.332	133.0	132.6	7.5	-0.1	5.5	0.2	-0.3
Fertilizers (Dec. 2009=100).....	31	0.313	108.1	114.1	-12.2	-0.5	3.7	-1.0	5.6
Tanning extracts; dye, pigments, varnish, paints & putty (Dec. 2011=100).....	32	0.171	100.2	100.4	6.9	-0.3	6.6	-0.1	0.2
Miscellaneous chemical products.....	38	0.465	93.4	93.4	-9.1	-1.1	-2.3	-0.1	0.0
Plastics and articles thereof; rubber and articles thereof.....	VII	3.152	147.7	147.4	-3.8	-0.4	0.5	-1.1	-0.2
Plastics and articles thereof.....	39	1.986	147.5	147.5	-0.4	-0.3	1.3	-1.3	0.0
Rubber and articles thereof.....	40	1.166	149.7	148.5	-9.3	-0.7	-0.7	-0.6	-0.8
Raw hides, skins, leather, furskins, travel goods, etc.....	VIII	0.613	127.6	128.5	1.7	0.1	1.0	0.1	0.7
Articles of leather; travel goods, bags, etc. of various materials.....	42	0.566	128.8	129.8	1.9	0.1	0.9	0.1	0.8
Wood, wood charcoal, cork, straw, basketware and wickerwork.....	IX	0.664	149.0	148.9	-5.9	-0.3	0.1	0.5	-0.1
Woodpulp, recovered paper, and paper products.....	X	1.044	114.0	113.4	0.2	-0.1	-0.3	0.0	-0.5
Paper and paperboard; articles of paper pulp, paper or paperboard.....	48	0.686	107.2	107.2	0.0	-0.2	-0.4	-0.2	0.0
Printed matter (Dec. 2013=100).....	49	0.194	99.8	99.7	-	-	0.0	-0.2	-0.1
Textile and textile articles.....	XI	4.698	113.7	113.9	-0.3	0.1	-0.1	-0.2	0.2
Articles of apparel and clothing accessories, knitted or crocheted.....	61	1.826	102.1	102.8	-1.2	0.0	-0.1	-0.6	0.7

See footnotes at end of table.

Table 5. U.S. import price indexes and percent changes for selected categories of goods: March 2013 to March 2014 — Continued

[2000=100, unless otherwise noted]

Description	Harmoni- zied system	Relative importance Feb. 2014 ¹	Index		Percent change				
			Feb. 2014	Mar. 2014	Annual	Monthly			
					Mar. 2013 to Mar. 2014	Nov. 2013 to Dec. 2013	Dec. 2013 to Jan. 2014	Jan. 2014 to Feb. 2014	Feb. 2014 to Mar. 2014
Articles of apparel and clothing accessories, not knitted or crocheted.....	62	1.708	118.8	118.8	1.4	0.2	-0.1	0.1	0.0
Made-up or worn textile articles.....	63	0.548	107.8	107.7	-0.1	0.0	0.4	-0.2	-0.1
Headgear, umbrellas, artificial flowers, etc...	XII	1.316	120.9	121.0	0.0	-0.1	-0.1	0.0	0.1
Footwear and parts of such articles.....	64	1.135	120.2	120.3	0.1	0.0	-0.1	0.1	0.1
Stone, plaster, cement, asbestos, ceramics, glass etc.....	XIII	0.775	133.2	133.1	0.8	0.0	0.2	0.0	-0.1
Articles of stone, plaster, cement, asbestos, or mica (Dec. 2001=100).....	68	0.256	126.3	126.1	0.6	-0.1	0.2	0.0	-0.2
Ceramic products.....	69	0.237	140.9	140.9	0.4	0.1	-0.1	0.0	0.0
Glass and glassware.....	70	0.282	130.2	130.2	1.4	-0.1	0.3	0.0	0.0
Pearls, stones, precious metals, imitation jewelry, and coins.....	XIV	2.595	178.6	183.6	-8.8	-1.9	-1.0	1.2	2.8
Base metals and articles of base metals. ...	XV	5.295	181.1	181.3	-2.4	0.1	0.2	0.4	0.1
Iron and steel.....	72	1.263	221.1	220.7	0.2	0.9	0.3	1.1	-0.2
Articles of iron or steel.....	73	1.665	152.8	154.8	-1.7	-0.1	-0.6	0.1	1.3
Copper and articles thereof.....	74	0.461	345.9	334.3	-6.2	0.2	3.3	0.3	-3.4
Aluminum and articles thereof.....	76	0.700	136.0	136.1	-3.4	-1.2	0.3	0.9	0.1
Tools, implements, cutlery, spoons and forks, of base metal; parts thereof.....	82	0.392	129.0	128.7	-0.7	0.1	-0.7	0.0	-0.2
Miscellaneous articles of base metal.....	83	0.440	135.8	135.9	-0.2	0.1	0.2	-0.1	0.1
Machinery, electrical equipment, TV image and sound recorders, parts, etc.....	XVI	27.088	84.5	84.5	-1.1	-0.1	0.1	-0.1	0.0
Machinery and mechanical appliances; parts thereof.....	84	14.057	89.4	89.5	-0.4	-0.2	0.2	-0.2	0.1
Electrical machinery and equip, sound and TV recorders & reproducers, parts.....	85	13.031	79.7	79.7	-1.6	-0.1	0.0	-0.1	0.0
Vehicles, aircraft, vessels and associated transport equipment.....	XVII	12.062	116.0	115.9	-0.7	0.0	0.0	0.0	-0.1
Motor vehicles and their parts.....	87	11.044	114.7	114.6	-0.8	0.0	0.0	0.0	-0.1
Aircraft, spacecraft, and parts thereof (Dec. 2002=100).....	88	0.918	120.4	120.3	0.2	-0.1	0.2	0.0	-0.1
Optical, photo, measuring, medical & musical instruments; & timepieces.....	XVIII	3.409	103.9	104.2	0.5	-0.2	0.3	-0.6	0.3
Optical, photographic, measuring and medical instruments.....	90	3.110	100.7	101.0	0.5	-0.1	0.2	-0.6	0.3
Clocks and watches and parts thereof.....	91	0.241	143.5	144.0	1.3	-0.3	1.6	-0.3	0.3
Miscellaneous manufactured articles.....	XX	3.537	113.1	113.2	0.1	0.0	-0.1	0.0	0.1
Furniture & stuffed furnishings; lamps & lighting fittings, nesoi; prefab bldgs.....	94	2.053	116.9	117.2	0.1	-0.2	0.1	-0.2	0.3
Toys, games and sports equipment; parts and accessories thereof.....	95	1.250	105.6	105.7	0.5	0.0	0.2	0.0	0.1
Miscellaneous manufactured articles.....	96	0.234	136.1	135.7	-2.0	0.1	-2.0	0.1	-0.3

¹ Relative importance figures are based on 2012 trade values.

NOTES: Data may be revised in each of the three months after original publication.

Dash = Not available

Table 6. U.S. export price indexes and percent changes for selected categories of goods: March 2013 to March 2014

[2000=100, unless otherwise noted]

Description	Harmoni- zied system	Relative importance Feb. 2014 ¹	Index		Percent change				
			Feb. 2014	Mar. 2014	Annual	Monthly			
					Mar. 2013 to Mar. 2014	Nov. 2013 to Dec. 2013	Dec. 2013 to Jan. 2014	Jan. 2014 to Feb. 2014	Feb. 2014 to Mar. 2014
Live animals; animal products.....	I	2.034	226.5	234.3	7.4	0.8	-1.7	1.8	3.4
Meat & edible meat offal (Dec. 2006=100)...	02	1.146	166.9	172.4	1.9	0.5	-1.6	0.8	3.3
Fish and crustaceans, molluscs and other aquatic invertebrates.....	03	0.352	203.6	202.6	-0.3	2.3	-2.6	2.4	-0.5
Vegetable products.....	II	4.580	246.7	255.7	-6.5	0.0	0.5	0.4	3.6
Edible fruit and nuts; peel of citrus fruit or melons.....	08	1.214	190.6	187.6	20.5	-0.6	6.9	1.5	-1.6
Cereals.....	10	1.090	241.8	257.9	-17.7	-0.7	-2.9	1.8	6.7
Oilseeds and misc. grains, seeds, fruits, plants, straw and fodder.....	12	1.834	267.9	283.3	-4.4	3.8	-1.6	0.6	5.7
Animal or vegetable fats and oils (Dec. 2009=100).....	III	0.241	111.2	115.4	-14.6	0.3	-1.6	-3.0	3.8
Prepared foodstuffs, beverages, and tobacco.....	IV	2.888	167.2	167.9	0.5	0.5	0.1	0.7	0.4
Preparations of vegetables, fruit, nuts or other parts of plants (Dec. 2009=100).....	20	0.338	114.9	114.6	1.8	1.4	1.1	-0.2	-0.3
Beverages, spirits, and vinegar (Dec. 2008=100).....	22	0.478	110.6	110.9	-2.2	-0.4	-0.5	-1.3	0.3
Residues and waste from the food industries; prepared animal feed.....	23	0.749	276.0	281.5	5.7	1.8	-0.9	4.8	2.0
Mineral products.....	V	10.565	330.5	339.5	9.8	4.3	2.3	4.2	2.7
Ores, slag and ash (Dec. 2012=100).....	26	0.429	92.7	92.5	-5.3	-1.3	3.3	-1.4	-0.2
Mineral fuels, oils and residuals, bituminous substances and mineral waxes.....	27	9.958	329.7	339.3	10.8	4.6	2.3	4.5	2.9
Products of the chemical or allied industries.....	VI	10.716	149.5	149.6	-3.2	0.0	-0.4	-0.6	0.1
Inorganic chemicals.....	28	0.891	175.9	175.3	-5.2	-0.6	-0.7	0.6	-0.3
Organic chemicals.....	29	3.105	163.6	163.6	-2.7	0.2	1.6	-0.1	0.0
Pharmaceutical products.....	30	2.539	114.9	114.8	-7.1	-0.3	-2.7	-2.3	-0.1
Fertilizers (Dec. 2012=100).....	31	0.257	72.3	74.3	-23.5	-4.1	-7.8	3.7	2.8
Essential oils and resinoids; perfumery cosmetic or toilet preparations.....	33	0.700	133.3	133.4	-3.8	0.3	-0.1	-1.8	0.1
Soap; lubricants; waxes, polishing or scouring products; candles, pastes.....	34	0.464	121.4	118.8	-0.4	0.0	0.0	0.0	-2.1
Miscellaneous chemical products.....	38	1.784	157.2	158.1	3.5	1.0	1.0	-0.1	0.6
Plastics and articles thereof; rubber and articles thereof.....	VII	5.145	150.1	150.5	0.2	-0.1	0.0	0.5	0.3
Plastics and articles thereof.....	39	4.180	145.0	145.3	1.7	-0.2	0.3	0.6	0.2
Rubber and articles thereof.....	40	0.965	172.0	172.9	-5.8	0.1	-0.9	-0.2	0.5
Raw hides, skins, leather, furskins, travel goods, etc.....	VIII	0.430	153.7	157.0	8.7	1.2	1.5	1.3	2.1
Woodpulp, recovered paper, and paper products.....	X	2.274	125.6	126.2	4.6	-0.5	1.0	1.6	0.5
Woodpulp and recovered paper.....	47	0.685	130.9	131.5	4.2	-1.6	1.0	2.5	0.5
Paper and paperboard; articles of paper pulp, paper or paperboard.....	48	1.163	124.1	124.9	5.4	-0.1	1.2	1.6	0.6
Textile and textile articles.....	XI	1.940	136.8	136.8	5.4	0.1	2.6	1.3	0.0
Cotton, including yarns and woven fabrics thereof.....	52	0.634	157.0	158.2	9.1	-0.8	5.2	3.9	0.8
Stone, plaster, cement, asbestos, ceramics, glass etc.....	XIII	0.732	119.1	119.4	1.2	0.0	0.1	0.3	0.3
Glass and glassware.....	70	0.375	97.7	97.7	0.3	0.0	0.2	0.0	0.0

See footnotes at end of table.

Table 6. U.S. export price indexes and percent changes for selected categories of goods: March 2013 to March 2014 — Continued

[2000=100, unless otherwise noted]

Description	Harmonized system	Relative importance Feb. 2014 ¹	Index		Percent change				
			Feb. 2014	Mar. 2014	Annual	Monthly			
					Mar. 2013 to Mar. 2014	Nov. 2013 to Dec. 2013	Dec. 2013 to Jan. 2014	Jan. 2014 to Feb. 2014	Feb. 2014 to Mar. 2014
Pearls, stones, precious metals, imitation jewelry, and coins.....	XIV	4.262	241.9	249.6	-9.9	-1.8	-0.8	1.3	3.2
Base metals and articles of base metals. . .	XV	5.307	165.5	165.2	-2.5	0.2	0.8	-0.8	-0.2
Iron and steel.....	72	1.381	186.7	190.3	-2.4	0.9	1.7	-2.0	1.9
Copper and articles thereof.....	74	0.609	232.7	229.4	-8.6	-1.3	2.1	-2.5	-1.4
Aluminum and articles thereof.....	76	0.838	121.9	119.8	-4.1	-0.9	0.5	1.1	-1.7
Tools, implements, cutlery, spoons and forks, of base metal; parts thereof.....	82	0.399	138.7	139.3	5.8	0.9	1.2	-0.1	0.4
Miscellaneous articles of base metal.....	83	0.309	146.9	147.0	0.5	-0.1	-0.1	0.1	0.1
Machinery, electrical equipment, TV image and sound recorders, parts, etc.....	XVI	27.546	97.2	97.4	-0.1	-0.1	0.1	0.2	0.2
Machinery and mechanical appliances; parts thereof.....	84	16.621	112.3	112.5	1.0	-0.1	0.2	0.4	0.2
Electrical machinery and equipment and parts and accessories thereof.....	85	10.925	80.9	81.1	-1.6	-0.1	-0.1	0.0	0.2
Vehicles, aircraft, vessels and associated transport equipment.....	XVII	13.289	129.3	129.5	1.3	0.0	0.5	0.1	0.2
Motor vehicles and their parts.....	87	8.664	114.8	114.8	1.0	-0.1	0.7	-0.2	0.0
Optical, photo, measuring, medical & musical instruments; & timepieces.....	XVIII	5.948	107.4	107.5	0.2	0.0	0.1	0.0	0.1
Miscellaneous manufactured articles.....	XX	1.403	110.4	110.3	-0.5	0.0	0.5	0.0	-0.1
Furniture; stuffed furnishings; lamps and lighting fittings nesoi;.....	94	0.776	121.5	121.4	0.2	0.0	0.2	0.0	-0.1
Toys, games and sports equipment; parts and accessories thereof.....	95	0.474	89.6	89.6	-1.5	0.0	1.4	-0.1	0.0

¹ Relative importance figures are based on 2012 trade values.

NOTES: Data may be revised in each of the three months after original publication.

Dash = Not available

Table 7. U.S. import price indexes and percent changes by locality of origin: March 2013 to March 2014
 [2000=100, unless otherwise noted]

Description	Relative importance Feb. 2014 ¹	Index		Percent change				
		Feb. 2014	Mar. 2014	Annual	Monthly			
				Mar. 2013 to Mar. 2014	Nov. 2013 to Dec. 2013	Dec. 2013 to Jan. 2014	Jan. 2014 to Feb. 2014	Feb. 2014 to Mar. 2014
Industrialized Countries²	100.000	133.1	134.1	1.2	-0.2	0.9	1.5	0.8
Nonmanufactured articles.....	12.986	251.5	263.2	18.2	-0.3	5.5	10.9	4.7
Manufactured articles.....	86.449	123.7	123.9	-1.0	-0.2	0.3	0.3	0.2
Other Countries³	100.000	138.4	138.6	-1.6	0.1	0.1	0.6	0.1
Nonmanufactured articles.....	19.771	343.3	350.5	-3.9	0.5	-0.2	1.7	2.1
Manufactured articles.....	79.972	110.3	109.9	-0.8	0.0	0.2	0.3	-0.4
Canada	100.000	155.0	157.7	3.8	-0.1	1.9	3.3	1.7
Nonmanufactured articles.....	33.436	243.6	255.5	20.3	-0.1	6.4	11.1	4.9
Manufactured articles.....	65.700	135.2	135.5	-3.1	-0.1	0.0	-0.1	0.2
European Union⁴	100.000	137.7	137.8	1.5	-0.2	0.9	0.1	0.1
France (Dec. 2003=100)	100.000	123.3	122.2	0.1	0.0	0.2	0.4	-0.9
Germany (Dec. 2003=100)	100.000	118.3	118.6	2.3	-0.2	1.0	-0.2	0.3
United Kingdom (Dec. 2003=100)	100.000	129.1	129.5	0.4	-0.2	0.1	-0.1	0.3
Latin America⁵	100.000	172.8	173.5	-3.0	0.5	0.1	0.6	0.4
Nonmanufactured articles.....	28.554	362.3	371.7	-4.8	1.8	-0.3	1.2	2.6
Manufactured articles.....	71.032	131.5	130.9	-1.9	0.0	0.2	0.3	-0.5
Mexico (Dec. 2003=100)	100.000	140.5	141.9	-2.9	0.1	0.1	-0.4	1.0
Nonmanufactured articles (Dec. 2008=100).....	16.227	187.9	200.5	-6.4	2.4	0.4	-1.6	6.7
Manufactured articles (Dec. 2008=100)...	83.525	92.7	92.7	-1.8	-0.3	0.0	-0.2	0.0
Pacific Rim (Dec. 2003=100)⁶	100.000	102.8	102.8	-1.1	-0.1	-0.1	-0.2	0.0
China (Dec. 2003=100)	100.000	103.9	103.8	-0.3	0.1	-0.1	0.2	-0.1
Japan	100.000	99.0	99.1	-2.9	-0.3	-0.2	-0.1	0.1
Asian NICs⁷	100.000	89.5	89.4	-0.7	-1.2	-0.3	0.0	-0.1
ASEAN (Dec. 2003=100)⁸	100.000	104.3	104.5	0.6	-0.1	-0.2	-0.4	0.2
Asia Near East (Dec. 2003=100)⁹	100.000	264.6	268.4	-3.6	-0.7	1.1	3.3	1.4

¹ Relative importance figures are based on 2012 trade values.

² Western Europe, Canada, Japan, Australia, New Zealand and South Africa.

³ Eastern Europe, Latin America, OPEC countries, and other countries in Asia, Africa and the Western Hemisphere.

⁴ European Union countries.

⁵ Mexico, Central America, South America and the Caribbean.

⁶ China, Japan, Australia, Brunei, Indonesia, Macao, Malaysia, New Zealand, Papua New Guinea, Philippines and the Asian Newly Industrialized Countries.

⁷ Asian Newly Industrialized Countries - Hong Kong, Singapore, South Korea and Taiwan.

⁸ Association of Southeast Asian Nations - Brunei, Cambodia, Indonesia, Laos, Malaysia, Myanmar, Philippines, Singapore, Thailand and Vietnam.

⁹ Bahrain, Iran, Iraq, Israel, Jordan, Kuwait, Lebanon, Oman, Qatar, Saudi Arabia, Syria, United Arab Emirates and Yemen.

NOTES: Data may be revised in each of the three months after original publication.

Regions are not mutually exclusive.

Dash = Not available

Table 8. U.S. international price indexes and percent changes for selected transportation services: March 2013 to March 2014

[2000=100, unless otherwise noted]

Description	Relative importance Feb. 2014 ¹	Index		Percent change				
		Feb. 2014	Mar. 2014	Annual	Monthly			
				Mar. 2013 to Mar. 2014	Nov. 2013 to Dec. 2013	Dec. 2013 to Jan. 2014	Jan. 2014 to Feb. 2014	Feb. 2014 to Mar. 2014
Air Freight								
Import Air Freight	100.000	176.1	176.8	1.2	-0.6	0.0	-0.6	0.4
Europe (Dec. 2003=100).....	28.367	181.4	182.1	7.3	-0.8	1.6	-0.5	0.4
Asia.....	67.368	151.6	152.2	-0.7	-0.5	-0.6	-0.7	0.4
Export Air Freight	100.000	151.2	151.2	1.5	-0.2	2.4	0.2	0.0
Europe (Dec. 2006=100).....	35.753	135.9	135.7	1.7	-0.2	2.3	0.4	-0.1
Inbound Air Freight	100.000	163.0	164.9	0.7	-0.4	-0.4	-0.7	1.2
Europe (Dec. 2003=100).....	27.580	159.6	160.2	5.3	-0.6	1.9	-0.2	0.4
Asia.....	61.889	144.4	146.8	-1.0	-0.4	-1.4	-1.0	1.7
Outbound Air Freight	100.000	147.6	148.2	-0.2	0.1	0.6	0.0	0.4
Europe (Dec. 2003=100).....	33.207	164.4	164.4	2.0	0.0	0.4	-0.1	0.0
Asia.....	47.308	140.5	141.5	-0.9	0.2	0.8	0.1	0.7
Air Passenger Fares								
Import Air Passenger Fares	100.000	197.1	190.4	4.8	7.1	-6.4	0.3	-3.4
Europe.....	43.675	223.7	212.4	3.0	-2.5	-0.7	3.2	-5.1
Asia.....	23.740	153.1	147.9	0.2	15.6	-8.2	-3.4	-3.4
Latin America/Caribbean.....	8.502	165.7	168.7	0.5	10.0	-10.4	-1.4	1.8
Export Air Passenger Fares	100.000	172.4	179.8	-3.0	8.5	2.5	-12.5	4.3
Europe.....	27.468	210.2	216.6	-2.3	-2.4	-2.7	0.0	3.0
Asia.....	28.409	143.4	149.3	-6.9	9.5	11.9	-21.3	4.1
Latin America/Caribbean.....	21.111	199.4	208.4	4.9	9.3	2.9	-7.6	4.5

¹ Relative importance figures are based on 2012 trade values.

NOTES: Data may be revised in each of the three months after original publication.

Dash = Not available

TECHNICAL NOTE

Import and Export Merchandise and Services Price Indexes -- All indexes use a modified Laspeyres formula and are not seasonally adjusted. Price indexes are reweighted annually, with a two-year lag in the weights. Published series use a base year of 2000=100 where possible. More detailed index series and additional information may be obtained at <http://www.bls.gov/mxp>, or by calling (202) 691-7101.

Merchandise Goods Classification Systems -- The merchandise price indexes are published using three classification systems. Items are classified by end use according to the Bureau of Economic Analysis Classification System, by industry according to the North American Industry Classification System (NAICS), and by product category according to the Harmonized System (HS). While classification by end use and product category are self-explanatory, some notes are in order for classifying items by industry. In the NAICS imports and exports tables, items are classified by output industry, not input industry. As an example, NAICS import index 326 (plastics and rubber products manufacturing) include outputs such as manufactured plastic rather than inputs such as petroleum. The NAICS classification structure also matches the classification system used by the PPI (Producer Price Index) to produce the NAICS primary products indexes.

Import Price Indexes -- Products have been classified by the Harmonized Tariff Schedule of the United States Annotated (TSUSA). Import prices are based on U.S. dollar prices paid by the U.S. importer. The prices are generally either "free on board" (f.o.b.) foreign port or "cost, insurance, and freight" (c.i.f.) U.S. port transaction prices, depending on the practices of the individual industry. The index for crude petroleum is calculated from data collected by the U.S. Department of Energy.

Export Price Indexes -- Products have been classified by the Harmonized Schedule B classification system of the U.S. Bureau of the Census. The prices used are generally either "free alongside ship" (f.a.s.) factory or "free on board" (f.o.b.) transaction prices, depending on the practices of the individual industry. Prices used in the grain index, excluding rice, are obtained from the U.S. Department of Agriculture.

Services Price Indexes -- Starting in September 2008 the Import Air Passenger Fares Indexes represent changes in the average revenue per passenger received by foreign carriers from U.S. residents and are calculated from data obtained from an airline consulting service. These data include tickets sold by travel agencies and travel websites. Tickets sold directly by the airlines are excluded, as are frequent flyer tickets generally. Starting in January 2008 the Export Air Passenger Fares Indexes represent changes in the average revenue per passenger received by U.S. carriers from foreign residents and are calculated from data collected directly from airlines. These data include frequent flyer tickets and those sold by consolidators. Taxes and fees are included in the Import Air Passenger Fares Index and excluded from the Export Air Passenger Fares Index. The Air Freight Indexes are calculated from data collected directly from airlines. These data exclude mail and passenger baggage. The scope of the service being priced is the movement of freight from airport to airport only, and does not include any ground transportation or port service. The Air Freight Indexes are presented using two definitions: Balance of Payments (which represent transactions between U.S. and foreign residents) and International (which represent transactions inbound to and outbound from the U.S.). Fact sheets specifying detailed information for each services industry are available at <http://www.bls.gov/mxp> under "MXP Publications."

Import Indexes by Locality of Origin -- Prices used in these indexes are a subset of the data collected for the Import Price Indexes. Beginning with January 2002, the indexes are defined by locality of origin using a nomenclature based upon the North American Industry Classification System (NAICS). Nonmanufactured goods are defined as NAICS 11 and 21 and manufactured goods are defined as NAICS 31-33.

Revision Policy -- To reflect the availability of late reports and corrections by respondents, monthly data may be revised in each of the three months after original publication. After three months, no further data revisions take place. So, for example, data released in the January release will be subject to revision in the releases for February, March, and April.

Uses of the Data -- The primary use of the indexes is to deflate trade statistics, notably the foreign trade sector of the National Income and Product Accounts constructed by the Department of Commerce. Other published indexes are useful for general market analysis. For trade in international services, Balance of Payments indexes are used for deflating National Income and Product Accounts, while International indexes are more appropriate for market analysis. Merchandise and services indexes also can be used to study U.S. competitiveness and to compute price elasticities, and the merchandise import indexes by country or region of origin are useful in terms of trade analysis.

E-Mail Subscription -- The U.S. Import and Export Price Indexes news release is available through an e-mail subscription service at (<http://www.bls.gov/bls/list.htm>).

Additional Information -- More detailed data are available on the Import/Export Price Indexes home page at (<http://www.bls.gov/mxp>). For technical assistance in using the BLS Internet site, send e-mail to (labstat.helpdesk@bls.gov). For Import/Export Price Index data requests, send e-mail to (mxpinfo@bls.gov).

Information from this release will be made available to sensory impaired individuals upon request. Voice phone: 202-691-5200; Federal Relay Service: 1-800-877-8339.