

Transmission of material in this release is embargoed until
8:30 a.m. (EDT) Wednesday, April 11, 2012

USDL-12-0664

Technical information: (202) 691-7101 • MXPinfo@bls.gov • www.bls.gov/mxp
Media contact: (202) 691-5902 • PressOffice@bls.gov

U.S. IMPORT AND EXPORT PRICE INDEXES – MARCH 2012

U.S. import prices advanced 1.3 percent in March, the U.S. Bureau of Labor Statistics reported today, after edging down 0.1 percent the previous month. Higher fuel and nonfuel prices contributed to the advance. Prices for U.S. exports rose 0.8 percent in March, following increases of 0.4 percent in February and 0.2 percent in January.

Chart 1. One-month percent change in the Import Price Index: March 2011– March 2012

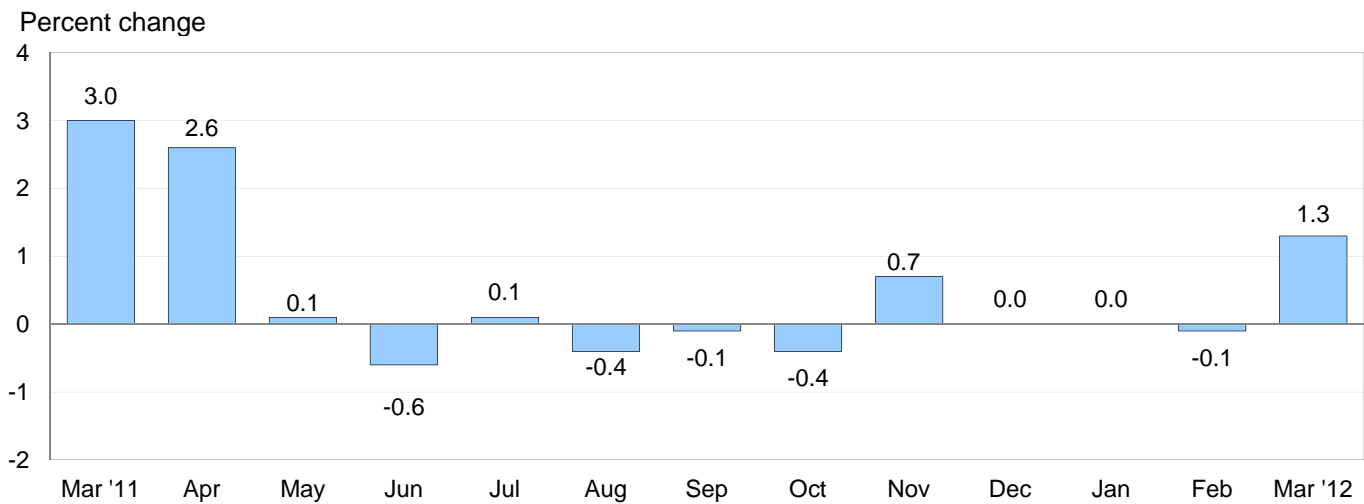
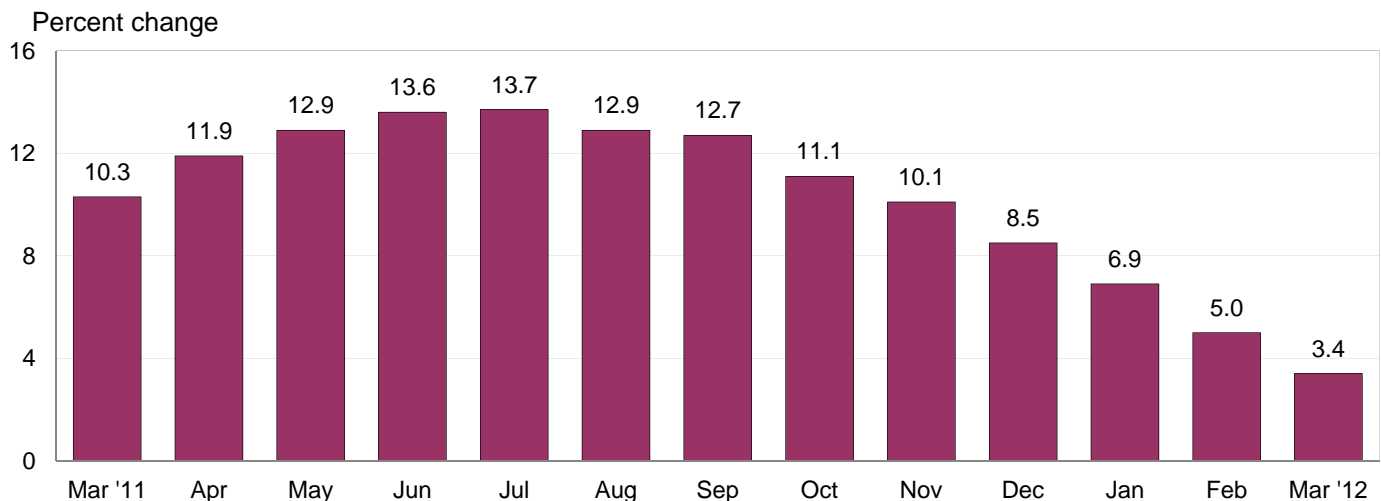


Chart 2. 12-month percent change in the Import Price Index: March 2011– March 2012



All Imports: Import prices advanced 1.3 percent in March, the first increase for the index since rising 0.7 percent in November and the largest monthly rise since a 2.6 percent advance in April 2011. Import prices increased 3.4 percent over the past year, the smallest 12-month advance for the index since a similar 3.4 percent rise between November 2008 and November 2009.

Fuel Imports: A 3.8 percent rise in import fuel prices led the March increase in overall import prices. The increase in fuel prices was the first one-month advance since a 3.4 percent rise in November. In March, a 4.3 percent increase in petroleum prices, the largest component of imported fuels more than offset a 14.2 percent drop in natural gas prices. Prices for import fuel rose 7.4 percent for the year ended in March, driven by a 9.6 percent advance in petroleum prices. In contrast, natural gas prices fell 37.8 percent over the past 12 months.

All Imports Excluding Fuel: The price index for nonfuel imports increased 0.5 percent in March, the largest one-month advance since a 0.8 percent rise in April 2011. A 1.7 percent increase in nonfuel industrial supplies and materials prices was the largest contributor to the overall advance, while prices for foods, feeds, and beverages; capital goods; and automotive vehicles rose as well. Nonfuel import prices increased 2.0 percent for the March 2011-12 period, the smallest year-over-year advance since a 1.9 percent rise for the year ended in February 2010.

Table A. Percent changes

Month	IMPORTS			EXPORTS		
	All imports	Fuel imports	Nonfuel imports	All exports	Agricultural exports	Non-agricultural exports
2011						
March.....	3.0	9.7	0.8	1.5	2.2	1.4
April.....	2.6	7.6	0.8	0.8	-0.5	0.9
May.....	0.1	-0.6	0.3	0.4	-1.1	0.5
June.....	-0.6	-2.3	0.0	0.1	0.8	0.2
July.....	0.1	0.1	0.2	-0.4	-4.0	0.1
August.....	-0.4	-2.1	0.2	0.4	1.6	0.3
September.....	-0.1	-1.0	0.2	0.5	1.9	0.3
October.....	-0.4	-0.6	-0.2	-2.0	-6.5	-1.4
November.....	0.7	3.4	-0.2	0.1	1.7	-0.2
December.....	0.0	-0.4 ^r	0.1 ^r	-0.5	-2.3	-0.2
2012						
January.....	0.0	-0.2 ^r	0.1	0.2	1.0 ^r	0.0
February.....	-0.1 ^r	0.0 ^r	0.0 ^r	0.4	-0.6 ^r	0.5
March.....	1.3	3.8	0.5	0.8	2.7	0.5
Mar. 2010 to 2011.....	10.3	31.0	4.4	9.5	34.0	7.1
Mar. 2011 to 2012.....	3.4	7.4	2.0	0.9	-5.5	1.7

r Revised

Chart 3. One-month percent change in the Export Price Index: March 2011– March 2012

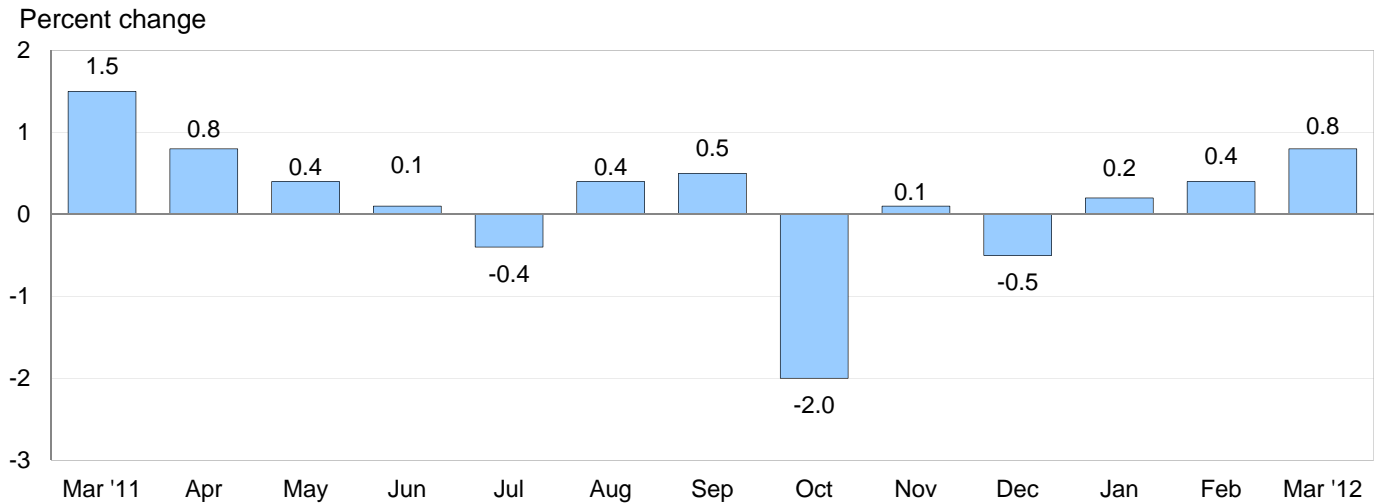
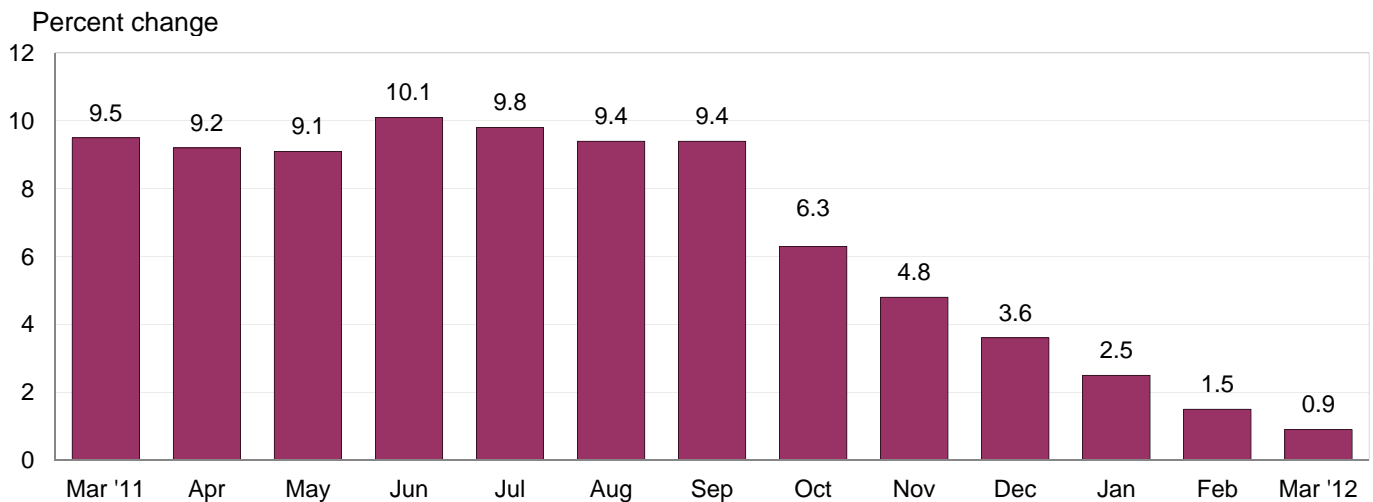


Chart 4. 12-month percent change in the Export Price Index: March 2011– March 2012



All Exports: U.S. export prices increased 0.8 percent in March, the largest monthly advance for the index since a 0.8 percent rise in April 2011. In March, higher prices for nonagricultural goods and agricultural goods each contributed to the advance. Despite recording the largest monthly increase in 11 months, overall export prices rose only 0.9 percent over the past 12 months, the smallest year-over-year advance since a 0.4 percent rise for the November 2008-09 period.

Agricultural Exports: Prices for agricultural exports rose 2.7 percent in March following a 0.6 percent downturn the previous month. An 8.3 percent increase in soybean prices and a 2.6 percent rise in corn prices more than offset a 6.5 percent drop in cotton prices. Prices for fruit, wheat, and nuts also rose, up 4.5 percent, 1.4 percent, and 2.1 percent, respectively. Despite the monthly increase, overall agricultural prices decreased 5.5 percent over the past year.

All Exports Excluding Agriculture: The price index for nonagricultural exports rose 0.5 percent in March, led by a 1.3 percent increase in nonagricultural industrial supplies and materials prices. Each of the major finished goods categories also advanced in March. Nonagricultural prices rose 1.7 percent over the past 12 months.

SELECTED MARCH HIGHLIGHTS

Import Prices

Nonfuel Industrial Supplies and Materials: Nonfuel industrial supplies and materials prices advanced 1.7 percent in March after rising 0.9 percent the previous month. The March increase was the largest monthly advance since a 2.0 percent rise in March 2011, and was led by a 3.3 percent increase in unfinished metals prices. The advance in unfinished metals prices was driven by a 4.8 percent rise in gold prices and a 7.8 percent increase in the price index for other precious metals.

Finished Goods: Finished goods prices rose overall in March, with capital goods prices advancing 0.2 percent and prices of automotive vehicles increasing 0.3 percent. The price index for consumer goods was unchanged. The March increase in capital goods prices was led by a 0.4 percent gain in computer prices, while the advance in automotive prices was driven by a 0.5 percent increase in the price index for passenger cars.

Foods, Feeds, and Beverages: Prices for foods, feeds, and beverages rose 1.8 percent in March following a 2.8 percent decline the previous month. A 14.5 percent advance in vegetable prices and a 5.7 percent increase in fruit prices were the largest contributors to the overall rise.

Imports by Locality of Origin: The price indexes for imports from Canada, the European Union, and Mexico increased 1.2 percent, 0.9 percent, and 1.1 percent, respectively, in March. Higher fuel prices were the primary contributing factor for the increases. In contrast, import prices from China and Japan were each unchanged in March.

Transportation Services: The index for import air passenger fares fell 1.0 percent in March, the first monthly decline since a 0.7 percent drop in November. A 6.6 percent decrease in Asian fares and a 2.4 percent fall in European fares each contributed to the March decline. Import air freight prices rose 2.6 percent in March, the first monthly increase for the index since a 1.1 percent advance in August and the largest rise since a 5.8 percent increase in May.

Export Prices

Nonagricultural Industrial Supplies and Materials: Prices for nonagricultural industrial supplies and materials increased 1.3 percent in March following a 1.1 percent advance in February. A 2.3 percent rise in fuel prices led the March increase, although higher prices for metals and chemicals also contributed to the overall advance.

Finished Goods: Each of the major finished goods categories recorded increases in March. Capital goods prices rose 0.2 percent for the second consecutive month. Prices for automotive vehicles also advanced 0.2 percent in March following a 0.3 percent increase the previous month, while the price index for consumer goods advanced 0.3 percent, after ticking up 0.1 percent in February.

Transportation Services: Export air passenger fares fell 1.1 percent in March following a 4.5 percent decline the previous month. The March decrease was led by a 3.5 percent decrease in European fares. In contrast, the price index for export air freight rose 1.4 percent after increasing 0.3 percent in February.

Import and Export Price Index data for April 2012 are scheduled for release on Thursday, May 10, 2012 at 8:30 a.m. (EDT).

Table 1. U.S. import price indexes and percent changes for selected categories of goods: March 2011 to March 2012

[2000=100, unless otherwise noted]

Description	End Use	Relative importance Feb. 2012 ¹	Index		Percent change				
			Feb. 2012	Mar. 2012	Annual	Monthly			
					Mar. 2011 to Mar. 2012	Nov. 2011 to Dec. 2011	Dec. 2011 to Jan. 2012	Jan. 2012 to Feb. 2012	Feb. 2012 to Mar. 2012
All commodities		100.000	142.1	144.0	3.4	0.0	0.0	-0.1	1.3
All imports excluding food and fuels (Dec. 2010=100)		70.596	103.4	103.8	2.2	0.1	-0.1	0.2	0.4
All imports excluding petroleum		76.650	116.2	116.6	1.4	0.1	-0.1	-0.1	0.3
All imports excluding fuels (Dec. 2001=100) ..		75.636	120.5	121.1	2.0	0.1	0.1	0.0	0.5
Foods, feeds, & beverages	0	5.040	171.3	174.3	-0.3	-0.5	2.2	-2.8	1.8
Agricultural foods, feeds & beverages, excluding distilled beverages.....	00	3.889	192.0	196.1	-1.4	-0.5	2.4	-3.4	2.1
Nonagricultural foods (fish, distilled beverages).....	01	1.151	124.4	124.8	3.4	-0.3	1.5	-0.9	0.3
Industrial supplies & materials	1	37.497	263.1	271.1	5.8	-0.3	-0.5	0.3	3.0
Industrial supplies & materials excluding petroleum.....		14.148	165.9	167.4	-0.6	-0.5	-1.3	0.2	0.9
Industrial supplies & materials excluding fuels (Dec. 2001=100).....		13.134	189.7	192.9	2.7	-0.2	-1.0	0.9	1.7
Industrial supplies & materials, durable.....		7.838	180.0	183.4	1.1	0.0	-1.1	1.1	1.9
Industrial supplies & materials nondurable excluding petroleum.....		5.296	149.6	149.1	-2.6	-1.1	-1.6	-0.9	-0.3
Fuels & lubricants.....	10	24.362	355.7	369.2	7.4	-0.4	-0.2	0.0	3.8
Petroleum & petroleum products.....	100	23.348	399.3	416.6	9.6	-0.3	0.0	0.4	4.3
Crude.....	10000	17.938	417.3	431.9	11.8	0.3	-0.4	2.6	3.5
Fuels, n.e.s.-coals & gas.....	101	0.713	97.7	85.8	-34.8	-4.2	-5.6	-10.0	-12.2
Gas-natural.....	10110	0.616	84.6	72.6	-37.8	-4.0	-6.6	-10.8	-14.2
Paper & paper base stocks.....	11	0.580	112.6	114.4	-1.6	-1.2	-1.9	0.0	1.6
Materials associated with nondurable supplies & materials.....	12	4.823	175.3	177.6	7.1	-0.4	-0.4	0.5	1.3
Selected building materials.....	13	0.973	131.8	134.2	2.1	0.4	0.4	0.5	1.8
Unfinished metals related to durable goods.....	14	3.734	275.3	284.5	-2.0	0.2	-2.5	1.7	3.3
Finished metals related to durable goods. . .	15	1.542	163.9	163.5	3.9	-0.2	-0.4	1.5	-0.2
Nonmetals related to durable goods.....	16	1.482	114.7	115.3	2.9	-0.5	-0.4	0.0	0.5
Capital goods	2	22.107	93.4	93.6	1.1	0.3	0.3	0.0	0.2
Electric generating equipment.....	20	2.855	118.8	119.3	3.2	-0.1	0.2	0.2	0.4
Nonelectrical machinery.....	21	17.638	86.5	86.7	0.2	0.3	0.2	-0.1	0.2
Transportation equipment excluding motor vehicles (Dec. 2001=100).....	22	1.613	131.6	132.6	6.3	0.9	1.2	0.0	0.8
Automotive vehicles, parts & engines	3	11.399	113.4	113.7	3.0	-0.3	0.4	0.0	0.3
Consumer goods, excluding automotives ..	4	23.956	107.5	107.5	2.7	0.4	-0.2	0.0	0.0
Nondurables, manufactured.....	40	11.460	114.2	114.3	3.6	0.1	0.0	-0.2	0.1
Durables, manufactured.....	41	11.196	100.0	100.2	1.0	0.3	-0.4	0.1	0.2
Nonmanufactured consumer goods.....	42	1.300	119.8	118.0	9.5	4.2	-0.6	1.0	-1.5

¹ Relative importance figures are based on 2010 trade values.

NOTES: Data may be revised in each of the three months after original publication.

Dash = Not available

Table 2. U.S. export price indexes and percent changes for selected categories of goods: March 2011 to March 2012

[2000=100, unless otherwise noted]

Description	End Use	Relative importance Feb. 2012 ¹	Index		Percent change				
			Feb. 2012	Mar. 2012	Annual	Monthly			
					Mar. 2011 to Mar. 2012	Nov. 2011 to Dec. 2011	Dec. 2011 to Jan. 2012	Jan. 2012 to Feb. 2012	Feb. 2012 to Mar. 2012
All commodities		100.000	132.8	133.9	0.9	-0.5	0.2	0.4	0.8
Agricultural commodities		10.622	201.3	206.7	-5.5	-2.3	1.0	-0.6	2.7
All exports excluding food and fuels (Dec. 2010=100)		81.455	102.9	103.3	1.1	0.0	-0.1	0.6	0.4
Nonagricultural commodities		89.379	128.0	128.7	1.7	-0.2	0.0	0.5	0.5
Foods, feeds, & beverages	0	9.694	200.1	205.9	-0.5	-2.0	1.2	-0.6	2.9
Agricultural foods, feeds & beverages, excluding distilled beverages.....	00	8.988	202.2	208.7	-1.6	-2.2	1.2	-0.7	3.2
Nonagricultural foods (fish, distilled beverages).....	01	0.706	186.0	184.4	16.8	0.7	0.9	0.3	-0.9
Industrial supplies & materials	1	34.777	185.7	187.9	-0.2	-0.7	-0.5	1.1	1.2
Industrial supplies & materials, durable.....		12.447	188.6	191.1	2.7	0.5	-1.9	2.2	1.3
Industrial supplies & materials, nondurable.....		22.330	184.9	187.0	-1.8	-1.4	0.4	0.4	1.1
Agricultural industrial supplies & materials..	10	1.634	199.9	199.4	-23.0	-2.9	0.0	-0.4	-0.3
Nonagricultural industrial supplies & materials		33.143	185.4	187.8	1.3	-0.6	-0.5	1.1	1.3
Fuels & lubricants.....	11	8.852	273.8	280.2	1.4	-2.7	1.2	0.0	2.3
Nonagricultural supplies & materials excluding fuels & building materials.....	12	23.352	174.5	176.1	1.3	0.2	-1.2	1.6	0.9
Selected building materials.....	13	0.939	117.0	117.3	0.9	-0.6	0.2	1.0	0.3
Capital goods	2	34.499	105.2	105.4	1.3	0.1	0.4	0.2	0.2
Electrical generating equipment.....	20	3.519	112.6	112.8	1.5	-0.1	-0.4	0.3	0.2
Nonelectrical machinery.....	21	25.019	94.6	94.8	1.0	0.1	0.3	0.0	0.2
Transportation equipment excluding motor vehicles (Dec. 2001=100).....	22	5.961	148.2	148.6	2.8	0.3	0.8	1.0	0.3
Automotive vehicles, parts & engines	3	8.207	112.3	112.5	2.6	-0.1	0.1	0.3	0.2
Consumer goods, excluding automotives ..	4	12.824	116.9	117.2	2.9	-0.1	0.2	0.1	0.3
Nondurables, manufactured.....	40	5.937	114.8	115.2	1.6	0.3	0.6	0.2	0.3
Durables, manufactured.....	41	5.369	114.0	114.3	1.2	0.0	0.1	0.5	0.3

¹ Relative importance figures are based on 2010 trade values.

NOTES: Data may be revised in each of the three months after original publication.

Dash = Not available

Table 3. U.S. import price indexes and percent changes for selected categories of goods: March 2011 to March 2012

[December 2005=100, unless otherwise noted]

Description	NAICS	Relative importance Feb. 2012 ¹	Index		Percent change				
			Feb. 2012	Mar. 2012	Annual	Monthly			
					Mar. 2011 to Mar. 2012	Nov. 2011 to Dec. 2011	Dec. 2011 to Jan. 2012	Jan. 2012 to Feb. 2012	Feb. 2012 to Mar. 2012
Nonmanufactured articles.....		21.103	175.7	181.0	7.1	-0.1	-0.6	1.3	3.0
Agriculture, forestry, fishing and hunting...	11	1.776	167.7	173.2	-8.5	-0.2	1.1	-5.3	3.3
Crop production.....	111	1.245	172.0	178.5	-9.4	0.2	2.8	-7.9	3.8
Mining.....	21	19.327	176.1	181.3	8.8	-0.1	-0.7	1.9	3.0
Mining (except oil and gas) (Dec. 2006=100).....	212	0.322	142.8	142.1	-3.9	-2.7	0.2	-2.8	-0.5
Manufactured articles.....		78.424	117.6	118.7	2.4	-0.1	0.2	-0.4	0.9
Manufactured goods, part 1.....	31	10.789	125.1	125.2	5.7	0.2	0.8	0.2	0.1
Food manufacturing.....	311	3.005	159.3	161.1	6.4	0.4	1.5	-0.3	1.1
Beverage and tobacco product manufacturing.....	312	0.838	111.9	111.7	1.2	0.0	0.1	-0.2	-0.2
Textile product mills.....	314	0.876	117.7	115.4	1.0	-0.1	-0.6	-0.1	-2.0
Apparel manufacturing.....	315	4.056	112.1	112.1	6.1	-0.1	0.4	0.2	0.0
Leather and allied product manufacturing. . .	316	1.616	119.5	119.5	8.7	0.4	1.5	0.8	0.0
Manufactured goods, part 2.....	32	17.554	137.1	140.6	3.0	-0.8	0.3	-2.2	2.6
Wood product manufacturing.....	321	0.577	108.8	112.1	1.2	0.3	0.7	0.6	3.0
Paper manufacturing.....	322	1.073	110.3	111.6	0.6	-0.6	-1.3	0.0	1.2
Petroleum and coal products manufacturing.....	324	4.555	168.8	180.9	2.7	-1.8	2.0	-7.5	7.2
Chemical manufacturing.....	325	8.564	133.0	134.2	3.1	-0.5	-0.7	-0.2	0.9
Plastics and rubber products manufacturing.....	326	1.871	127.0	127.1	5.8	-0.2	1.1	-0.2	0.1
Nonmetallic mineral product manufacturing.....	327	0.825	129.4	129.5	2.7	0.3	0.5	0.2	0.1
Manufactured goods, part 3.....	33	50.081	110.0	110.5	1.4	0.2	-0.1	0.2	0.5
Primary metal manufacturing.....	331	4.324	180.7	185.7	-0.8	0.3	-2.4	1.8	2.8
Fabricated metal product manufacturing. . .	332	2.530	129.8	129.6	5.1	0.3	0.1	0.4	-0.2
Machinery manufacturing.....	333	5.548	120.4	120.7	3.0	0.1	0.6	0.2	0.2
Computer and electronic product manufacturing.....	334	15.445	83.0	83.1	-1.7	0.4	0.2	-0.1	0.1
Electrical equipment, appliance, and component manufacturing.....	335	3.783	117.7	118.2	3.2	0.3	0.0	0.2	0.4
Transportation equipment manufacturing....	336	12.038	110.4	110.9	3.3	-0.2	0.4	0.0	0.5
Furniture and related product manufacturing.....	337	1.291	112.8	113.2	3.9	-0.1	0.0	-0.1	0.4
Miscellaneous manufacturing.....	339	5.122	122.3	122.3	3.3	0.4	-1.0	0.2	0.0

¹ Relative importance figures are based on 2010 trade values.

NOTES: Data may be revised in each of the three months after original publication.

Dash = Not available

Table 4. U.S. export price indexes and percent changes for selected categories of goods: March 2011 to March 2012

[December 2005=100, unless otherwise noted]

Description	NAICS	Relative importance Feb. 2012 ¹	Index		Percent change				
			Feb. 2012	Mar. 2012	Annual	Monthly			
					Mar. 2011 to Mar. 2012	Nov. 2011 to Dec. 2011	Dec. 2011 to Jan. 2012	Jan. 2012 to Feb. 2012	Feb. 2012 to Mar. 2012
Nonmanufactured articles.....		8.237	163.8	165.4	-11.1	-2.4	0.2	-1.6	1.0
Agriculture, forestry, fishing and hunting...	11	6.058	189.2	194.9	-10.8	-3.2	2.1	-0.7	3.0
Crop production.....	111	5.637	195.9	202.3	-11.8	-3.4	2.5	-1.0	3.3
Mining.....	21	2.179	109.8	104.6	-11.2	-0.3	-4.6	-3.7	-4.7
Mining (except oil and gas).....	212	1.584	139.3	132.1	-3.2	-1.1	-2.3	0.9	-5.2
Manufactured articles.....		88.612	120.6	121.5	2.4	-0.2	0.1	0.5	0.7
Manufactured goods, part 1.....	31	6.999	143.3	145.2	2.5	-0.6	-0.7	0.6	1.3
Food manufacturing.....	311	4.855	163.1	165.7	5.3	-0.9	-0.2	0.4	1.6
Beverage and tobacco product manufacturing.....	312	0.550	115.5	119.1	3.4	-0.6	-0.8	1.2	3.1
Apparel manufacturing.....	315	0.419	119.8	119.8	8.4	1.5	1.0	0.0	0.0
Manufactured goods, part 2.....	32	26.637	134.5	136.5	2.9	-0.8	0.7	0.8	1.5
Wood product manufacturing.....	321	0.405	114.6	114.1	-6.3	0.1	0.0	0.4	-0.4
Paper manufacturing.....	322	1.833	118.7	118.3	-5.5	-1.5	-0.8	-0.1	-0.3
Petroleum and coal products manufacturing.....	324	6.359	170.9	177.7	3.3	-3.6	2.4	2.0	4.0
Chemical manufacturing.....	325	15.110	132.0	133.1	3.5	0.3	0.2	0.7	0.8
Plastics and rubber products manufacturing.....	326	2.179	116.9	116.7	7.0	-0.1	0.6	0.2	-0.2
Nonmetallic mineral product manufacturing.....	327	0.752	111.1	111.6	1.2	-0.3	0.4	0.0	0.5
Manufactured goods, part 3.....	33	54.976	112.9	113.4	2.3	0.2	0.0	0.2	0.4
Primary metal manufacturing.....	331	4.894	174.8	179.4	4.9	1.3	-4.0	1.3	2.6
Fabricated metal product manufacturing.	332	2.591	127.7	129.2	2.1	0.2	0.4	-1.4	1.2
Machinery manufacturing.....	333	11.067	119.9	120.3	3.8	0.0	1.7	0.1	0.3
Computer and electronic product manufacturing.....	334	14.391	89.6	89.6	-0.8	0.1	0.0	0.0	0.0
Electrical equipment, appliance, and component manufacturing.....	335	3.188	111.3	111.4	0.7	-0.4	-0.1	0.4	0.1
Transportation equipment manufacturing....	336	13.374	116.2	116.5	2.6	0.2	0.4	0.5	0.3
Miscellaneous manufacturing.....	339	5.177	122.5	122.9	6.2	-0.5	-0.9	0.0	0.3

¹ Relative importance figures are based on 2010 trade values.

NOTES: Data may be revised in each of the three months after original publication.

Dash = Not available

Table 5. U.S. import price indexes and percent changes for selected categories of goods: March 2011 to March 2012

[2000=100, unless otherwise noted]

Description	Harmonized system	Relative importance Feb. 2012 ¹	Index		Percent change				
			Feb. 2012	Mar. 2012	Annual	Monthly			
					Mar. 2011 to Mar. 2012	Nov. 2011 to Dec. 2011	Dec. 2011 to Jan. 2012	Jan. 2012 to Feb. 2012	Feb. 2012 to Mar. 2012
Live animals; animal products.....	I	1.169	168.3	171.1	3.2	-0.2	2.0	-0.9	1.7
Meat and edible meat offal.....	02	0.271	217.9	222.3	5.1	-0.5	2.6	-1.3	2.0
Fish and crustaceans, molluscs and other aquatic invertebrates.....	03	0.613	122.4	123.2	0.5	-0.8	2.2	-1.4	0.7
Vegetable products.....	II	1.607	205.7	214.0	-0.7	1.8	3.1	-5.7	4.0
Edible vegetables, roots, and tubers.....	07	0.248	248.8	290.3	-26.8	-4.1	19.4	-32.0	16.7
Edible fruit and nuts; peel of citrus fruit or melons.....	08	0.470	119.1	127.7	-2.1	-0.2	2.9	1.9	7.2
Coffee, tea, mate and spices.....	09	0.445	291.8	273.7	10.5	2.9	1.0	-2.3	-6.2
Animal or vegetable fats and oils (Dec. 2009=100).....	III	0.255	131.6	133.4	-15.5	1.6	1.2	-3.0	1.4
Prepared foodstuffs, beverages, and tobacco.....	IV	2.368	157.9	157.6	2.3	-0.7	0.5	-0.1	-0.2
Cocoa and cocoa preparations (Dec. 2009=100).....	18	0.185	86.9	88.0	-18.1	-12.0	0.6	1.8	1.3
Preparations of cereals, flour, starch or milk; bakers' wares (Dec. 2007=100).....	19	0.222	124.8	125.1	-0.4	-0.2	-0.3	-0.1	0.2
Preparations of vegetables, fruit, nuts, or other parts of plants.....	20	0.351	175.1	173.6	13.0	2.5	1.1	-0.6	-0.9
Beverages, spirits, and vinegar.....	22	0.794	122.6	122.1	1.5	-0.1	0.2	-0.2	-0.4
Mineral products.....	V	24.037	357.2	370.6	7.6	-0.4	-0.2	0.0	3.8
Mineral fuels, oils and residuals, bituminous substances and mineral waxes.....	27	23.728	353.5	366.9	7.7	-0.3	-0.2	0.0	3.8
Products of the chemical or allied industries.....	VI	8.055	147.0	147.5	1.8	-0.5	-0.8	-0.8	0.3
Inorganic chemicals.....	28	0.875	354.3	339.6	-6.8	-1.8	-4.8	-3.5	-4.1
Organic chemicals.....	29	2.408	137.8	140.8	4.3	-0.3	0.3	0.2	2.2
Pharmaceutical products.....	30	2.918	113.8	113.9	1.2	0.1	-0.9	-1.4	0.1
Fertilizers (Dec. 2009=100).....	31	0.441	140.0	140.9	15.9	-4.2	-4.7	1.4	0.6
Tanning extracts; dye, pigments, varnish, paints & putty (Dec. 2011=100).....	32	0.177	102.6	103.5	-	-	3.1	-0.5	0.9
Essential oils and resinoids (Dec. 2001=100).....	33	0.408	123.7	124.8	1.0	-0.6	0.2	-0.9	0.9
Miscellaneous chemical products.....	38	0.472	103.2	103.6	-3.5	0.3	-1.2	-0.2	0.4
Plastics and articles thereof; rubber and articles thereof.....	VII	3.071	152.1	153.0	4.0	-0.5	-0.1	0.1	0.6
Plastics and articles thereof.....	39	1.855	142.8	143.9	5.5	0.6	0.2	-0.3	0.8
Rubber and articles thereof.....	40	1.216	170.0	170.3	1.6	-2.3	-0.4	0.8	0.2
Raw hides, skins, leather, furskins, travel goods, etc.....	VIII	0.585	126.8	126.8	8.3	0.1	1.9	1.0	0.0
Articles of leather; travel goods, bags, etc. of various materials.....	42	0.538	127.6	127.6	8.8	0.1	2.0	1.0	0.0
Wood, wood charcoal, cork, straw, basketware and wickerwork.....	IX	0.607	131.5	135.4	1.7	0.2	0.5	0.7	3.0
Woodpulp, recovered paper, and paper products.....	X	1.177	113.3	114.2	0.4	-0.6	-1.1	0.3	0.8
Pulp wood, waste paper, and paperboard (Dec. 2011=100).....	47	0.170	96.1	100.9	-	-	-4.4	0.5	5.0
Paper and paperboard; articles of paper pulp, paper or paperboard.....	48	0.795	109.1	109.2	1.7	-0.2	-0.6	0.1	0.1
Textile and textile articles.....	XI	5.208	116.0	115.6	5.2	-0.1	0.3	0.2	-0.3
Articles of apparel and clothing accessories, knitted or crocheted.....	61	2.019	106.9	106.7	3.8	0.1	0.3	0.1	-0.2

See footnotes at end of table.

Table 5. U.S. import price indexes and percent changes for selected categories of goods: March 2011 to March 2012 — Continued

[2000=100, unless otherwise noted]

Description	Harmonized system	Relative importance Feb. 2012 ¹	Index		Percent change				
			Feb. 2012	Mar. 2012	Annual	Monthly			
					Mar. 2011 to Mar. 2012	Nov. 2011 to Dec. 2011	Dec. 2011 to Jan. 2012	Jan. 2012 to Feb. 2012	Feb. 2012 to Mar. 2012
Articles of apparel and clothing accessories, not knitted or crocheted.....	62	1.905	117.9	118.0	9.9	-0.2	0.6	0.3	0.1
Made-up or worn textile articles.....	63	0.644	112.0	108.9	-0.9	0.0	-0.7	0.0	-2.8
Headgear, umbrellas, artificial flowers, etc. . .	XII	1.322	118.6	118.7	7.8	0.5	0.9	0.4	0.1
Footwear and parts of such articles.....	64	1.125	117.7	117.7	8.0	0.6	0.9	0.5	0.0
Stone, plaster, cement, asbestos, ceramics, glass etc.....	XIII	0.745	131.1	131.5	2.7	0.2	0.2	-0.1	0.3
Articles of stone, plaster, cement, asbestos, or mica (Dec. 2001=100).....	68	0.239	124.3	124.5	3.6	0.1	-0.1	0.2	0.2
Ceramic products.....	69	0.224	141.2	142.1	0.8	0.1	0.0	0.0	0.6
Glass and glassware.....	70	0.282	126.1	126.3	3.4	0.4	0.6	-0.3	0.2
Pearls, stones, precious metals, imitation jewelry, and coins.....	XIV	3.327	206.1	211.3	14.2	2.6	-1.9	1.5	2.5
Base metals and articles of base metals.....	XV	4.887	191.3	192.5	-3.6	-0.5	0.2	0.9	0.6
Iron and steel.....	72	1.129	245.3	246.8	-3.7	-0.6	0.2	-0.6	0.6
Articles of iron or steel.....	73	1.401	160.6	160.7	2.9	-0.1	0.0	-0.5	0.1
Copper and articles thereof.....	74	0.471	370.5	375.8	-11.4	0.4	2.6	6.2	1.4
Nickel and articles thereof (Dec. 2009=100)...	75	0.143	111.2	118.0	-22.4	-2.4	-1.6	6.0	6.1
Aluminum and articles thereof.....	76	0.709	141.0	141.8	-6.8	-2.4	-1.3	2.0	0.6
Tools, implements, cutlery, spoons and forks, of base metal; parts thereof.....	82	0.356	126.7	126.0	3.2	0.4	2.1	-0.1	-0.6
Miscellaneous articles of base metal.....	83	0.400	133.0	132.2	2.6	-0.1	0.5	0.5	-0.6
Machinery, electrical equipment, TV image and sound recorders, parts, etc.....	XVI	24.660	86.1	86.3	0.3	0.2	0.3	-0.1	0.2
Machinery and mechanical appliances; parts thereof.....	84	12.372	89.7	89.9	1.2	0.2	0.8	0.0	0.2
Electrical machinery and equip, sound and TV recorders & reproducers, parts.....	85	12.288	82.7	82.8	-0.6	0.4	-0.1	-0.1	0.1
Vehicles, aircraft, vessels and associated transport equipment.....	XVII	10.051	114.7	115.3	3.4	-0.3	0.3	0.1	0.5
Motor vehicles and their parts.....	87	9.273	113.8	114.3	3.4	-0.3	0.2	0.1	0.4
Aircraft, spacecraft, and parts thereof (Dec. 2002=100).....	88	0.687	116.1	117.9	2.3	0.0	0.3	0.0	1.6
Optical, photo, measuring, medical & musical instruments; & timepieces.....	XVIII	3.180	104.1	104.3	0.0	0.4	-1.9	0.2	0.2
Optical, photographic, measuring and medical instruments.....	90	2.930	101.6	101.8	-0.3	0.5	-2.1	0.2	0.2
Clocks and watches and parts thereof.....	91	0.190	128.0	128.2	2.6	-0.1	0.1	0.2	0.2
Miscellaneous manufactured articles.....	XX	3.633	111.5	111.7	3.1	0.0	-0.1	0.0	0.2
Furniture & stuffed furnishings; lamps & lighting fittings, nesoi; prefab bldgs.....	94	1.929	114.8	115.1	3.3	0.0	-0.5	0.1	0.3
Toys, games and sports equipment; parts and accessories thereof.....	95	1.507	104.8	104.9	2.8	0.1	0.2	0.0	0.1
Miscellaneous manufactured articles.....	96	0.197	133.1	133.3	3.8	-0.3	-0.1	0.3	0.2

¹ Relative importance figures are based on 2010 trade values.

NOTES: Data may be revised in each of the three months after original publication.

Dash = Not available

Table 6. U.S. export price indexes and percent changes for selected categories of goods: March 2011 to March 2012

[2000=100, unless otherwise noted]

Description	Harmoni- zied system	Relative importance Feb. 2012 ¹	Index		Percent change				
			Feb. 2012	Mar. 2012	Annual	Monthly			
					Mar. 2011 to Mar. 2012	Nov. 2011 to Dec. 2011	Dec. 2011 to Jan. 2012	Jan. 2012 to Feb. 2012	Feb. 2012 to Mar. 2012
Live animals; animal products.....	I	1.922	204.7	203.3	6.6	-0.1	-1.0	-0.5	-0.7
Meat & edible meat offal (Dec. 2006=100). . .	02	1.119	169.3	169.6	7.8	-0.5	-0.8	0.3	0.2
Fish and crustaceans, molluscs and other aquatic invertebrates.....	03	0.404	202.1	198.0	17.3	2.0	0.6	0.0	-2.0
Vegetable products.....	II	5.526	233.9	243.6	-3.9	-2.4	1.6	-0.8	4.1
Edible fruit and nuts; peel of citrus fruit or melons.....	08	0.805	128.6	134.3	-1.6	6.7	-4.7	-2.7	4.4
Cereals.....	10	2.160	279.4	285.0	-8.0	-7.1	3.2	-0.1	2.0
Oilseeds and misc. grains, seeds, fruits, plants, straw and fodder.....	12	1.982	244.6	261.9	-1.1	-3.3	5.2	0.5	7.1
Animal or vegetable fats and oils (Dec. 2009=100).....	III	0.463	144.4	150.6	-4.7	-1.7	1.1	-2.0	4.3
Prepared foodstuffs, beverages, and tobacco.....	IV	2.606	150.2	154.3	3.9	-1.2	0.0	1.0	2.7
Preparations of vegetables, fruit, nuts or other parts of plants (Dec. 2009=100).....	20	0.321	110.0	110.3	3.8	-0.9	0.4	0.4	0.3
Beverages, spirits, and vinegar (Dec. 2008=100).....	22	0.389	105.9	109.8	4.6	0.1	0.8	-0.1	3.7
Residues and waste from the food industries; prepared animal feed.....	23	0.722	207.0	218.1	-2.2	-2.5	-1.7	2.4	5.4
Mineral products.....	V	8.837	322.9	330.6	1.0	-2.6	0.8	0.5	2.4
Mineral fuels, oils and residuals, bituminous substances and mineral waxes.....	27	8.199	318.7	326.7	1.3	-2.8	1.1	0.1	2.5
Products of the chemical or allied industries.....	VI	12.272	154.7	154.8	2.5	0.2	-0.5	0.4	0.1
Inorganic chemicals.....	28	0.970	178.2	174.0	-10.5	1.2	-9.7	-0.3	-2.4
Organic chemicals.....	29	3.506	169.8	170.5	4.4	0.9	0.1	1.7	0.4
Pharmaceutical products.....	30	3.175	124.8	125.4	0.6	-0.3	0.8	0.1	0.5
Essential oils and resinoids; perfumery cosmetic or toilet preparations.....	33	0.759	135.0	135.3	5.9	0.2	0.9	0.3	0.2
Soap; lubricants; waxes, polishing or scouring products; candles, pastes.....	34	0.468	123.0	123.1	0.5	-0.1	-0.5	-0.9	0.1
Miscellaneous chemical products.....	38	1.755	151.6	152.6	5.0	0.1	1.3	-0.5	0.7
Plastics and articles thereof; rubber and articles thereof.....	VII	5.497	149.1	151.0	4.9	-0.1	0.3	0.9	1.3
Plastics and articles thereof.....	39	4.414	140.0	141.2	2.8	0.1	0.7	0.8	0.9
Rubber and articles thereof.....	40	1.083	192.1	197.6	13.9	-1.1	-1.2	1.7	2.9
Raw hides, skins, leather, furskins, travel goods, etc.....	VIII	0.359	126.2	131.5	-0.7	-2.4	2.1	2.3	4.2
Wood, wood charcoal, cork, straw, basketware and wickerwork.....	IX	0.533	107.6	107.3	-2.6	-1.4	-1.8	1.4	-0.3
Woodpulp, recovered paper, and paper products.....	X	2.324	117.8	118.4	-6.9	-2.5	0.2	0.6	0.5
Woodpulp and recovered paper.....	47	0.643	125.9	128.3	-16.7	-7.0	0.7	2.8	1.9
Paper and paperboard; articles of paper pulp, paper or paperboard.....	48	1.230	116.9	116.9	-2.4	-0.7	0.1	-0.4	0.0
Printed material.....	49	0.451	119.4	119.4	1.2	0.0	0.1	0.0	0.0
Textile and textile articles.....	XI	2.004	132.0	130.0	-21.1	-1.6	0.2	-0.7	-1.5
Cotton, including yarns and woven fabrics thereof.....	52	0.655	162.7	154.1	-47.3	-4.9	-1.5	-2.8	-5.3
Stone, plaster, cement, asbestos, ceramics, glass etc. (Dec. 2008=100).....	XIII	0.743	117.3	117.7	1.9	-0.3	0.3	0.4	0.3
Glass and glassware.....	70	0.403	98.6	98.7	-0.3	-0.5	-0.1	-0.1	0.1

See footnotes at end of table.

Table 6. U.S. export price indexes and percent changes for selected categories of goods: March 2011 to March 2012 — Continued

[2000=100, unless otherwise noted]

Description	Harmonized system	Relative importance Feb. 2012 ¹	Index		Percent change				
			Feb. 2012	Mar. 2012	Annual	Monthly			
					Mar. 2011 to Mar. 2012	Nov. 2011 to Dec. 2011	Dec. 2011 to Jan. 2012	Jan. 2012 to Feb. 2012	Feb. 2012 to Mar. 2012
Pearls, stones, precious metals, imitation jewelry, and coins.....	XIV	5.438	288.0	293.8	17.3	1.1	-4.4	2.3	2.0
Base metals and articles of base metals.....	XV	5.676	178.3	179.7	-4.1	-0.2	1.1	1.4	0.8
Iron and steel.....	72	1.798	226.2	225.6	-8.1	0.0	3.4	2.8	-0.3
Articles of iron or steel.....	73	1.347	170.1	173.8	3.1	-0.2	0.3	-1.6	2.2
Copper and articles thereof.....	74	0.686	261.5	266.8	-6.6	0.6	-0.4	5.4	2.0
Aluminum and articles thereof.....	76	0.847	128.8	129.0	-6.8	-2.0	0.5	1.8	0.2
Tools, implements, cutlery, spoons and forks, of base metal; parts thereof.....	82	0.379	129.2	129.3	3.1	0.2	0.3	0.2	0.1
Miscellaneous articles of base metal.....	83	0.319	136.7	138.0	2.4	0.4	-0.1	0.4	1.0
Machinery, electrical equipment, TV image and sound recorders, parts, etc.....	XVI	27.606	96.7	96.9	1.1	0.0	0.3	0.1	0.2
Machinery and mechanical appliances; parts thereof.....	84	15.947	109.4	109.6	1.9	0.0	0.4	0.4	0.2
Electrical machinery and equipment and parts and accessories thereof.....	85	11.659	82.9	83.0	-0.1	0.1	0.1	-0.2	0.1
Vehicles, aircraft, vessels and associated transport equipment.....	XVII	10.942	126.0	126.3	2.7	0.2	0.9	0.2	0.2
Motor vehicles and their parts.....	87	7.247	112.6	112.8	3.3	0.0	1.1	0.2	0.2
Optical, photo, measuring, medical & musical instruments; & timepieces.....	XVIII	5.773	105.1	105.2	-0.4	0.0	-0.9	0.5	0.1
Miscellaneous manufactured articles.....	XX	1.335	108.9	108.9	0.3	-0.1	0.1	0.4	0.0
Furniture; stuffed furnishings; lamps and lighting fittings nesoi;.....	94	0.695	119.2	119.3	0.2	-0.1	-0.5	0.6	0.1
Toys, games and sports equipment; parts and accessories thereof.....	95	0.522	91.1	91.2	-1.0	0.0	0.9	0.3	0.1

1 Relative importance figures are based on 2010 trade values.

NOTES: Data may be revised in each of the three months after original publication.

Dash = Not available

Table 7. U.S. import price indexes and percent changes by locality of origin: March 2011 to March 2012
 [2000=100, unless otherwise noted]

Description	Percent of U.S. imports ¹	Index		Percent change				
		Feb. 2012	Mar. 2012	Annual	Monthly			
				Mar. 2011 to Mar. 2012	Nov. 2011 to Dec. 2011	Dec. 2011 to Jan. 2012	Jan. 2012 to Feb. 2012	Feb. 2012 to Mar. 2012
Industrialized Countries²	38.296	132.3	133.9	2.4	0.0	-0.5	-0.2	1.2
Nonmanufactured articles.....	4.447	241.5	244.9	3.5	0.0	-1.5	-0.5	1.4
Manufactured articles.....	33.487	123.4	124.8	2.3	-0.1	-0.4	0.0	1.1
Other Countries³	61.704	143.1	144.7	4.2	0.0	0.1	0.6	1.1
Nonmanufactured articles.....	12.907	370.4	382.2	8.6	-0.1	-0.2	2.0	3.2
Manufactured articles.....	48.593	112.3	112.7	2.5	0.0	0.3	0.2	0.4
Canada	14.414	155.1	156.9	0.8	0.3	-0.6	0.4	1.2
Nonmanufactured articles.....	4.027	230.1	233.0	2.1	0.2	-1.7	-0.9	1.3
Manufactured articles.....	10.122	139.0	140.5	0.0	0.3	-0.1	1.0	1.1
European Union⁴	15.813	135.0	136.2	2.6	-0.4	-0.9	-0.1	0.9
Nonmanufactured articles.....	0.262	392.4	404.4	25.5	-2.0	2.1	5.6	3.1
Manufactured articles.....	15.467	131.2	132.3	2.1	-0.5	-1.0	-0.2	0.8
France (Dec. 2003=100)	1.736	121.0	121.9	3.1	0.5	0.0	-0.2	0.7
Germany (Dec. 2003=100)	4.265	114.2	115.1	0.6	-0.3	-0.9	0.1	0.8
United Kingdom (Dec. 2003=100)	2.397	134.8	136.7	3.1	-0.4	0.9	0.9	1.4
Latin America⁵	19.049	183.5	185.8	3.4	0.1	0.7	0.4	1.3
Nonmanufactured articles.....	5.633	402.9	414.6	8.5	0.4	0.5	0.4	2.9
Manufactured articles.....	13.328	135.9	136.3	0.1	-0.1	0.7	0.4	0.3
Mexico (Dec. 2003=100)	12.091	149.0	150.6	0.6	-0.1	1.0	-0.2	1.1
Nonmanufactured articles (Dec. 2008=100).....	2.017	213.8	224.3	6.0	-0.9	3.5	-2.0	4.9
Manufactured articles (Dec. 2008=100)....	10.028	96.5	96.5	-0.9	0.1	0.3	0.3	0.0
Pacific Rim (Dec. 2003=100)⁶	34.659	104.8	104.9	1.3	0.0	0.1	0.0	0.1
China (Dec. 2003=100)	19.583	105.5	105.5	2.7	0.0	0.3	0.1	0.0
Japan	6.349	102.4	102.4	1.3	0.2	0.2	0.1	0.0
Asian NICs⁷	5.471	90.6	90.6	-0.4	-0.2	0.0	0.0	0.0
ASEAN (Dec. 2003=100)⁸	5.652	105.6	106.0	1.5	-0.1	0.2	0.5	0.4
Asia Near East (Dec. 2003=100)⁹	3.948	283.4	291.8	14.0	-1.1	0.1	3.7	3.0

1 Percentage of trade figures are based on 2010 trade values.

2 Includes Western Europe, Canada, Japan, Australia, New Zealand and South Africa.

3 Includes Eastern Europe, Latin America, OPEC countries, and other countries in Asia, Africa and the Western Hemisphere.

4 Includes European Union countries.

5 Includes Mexico, Central America, South America and the Caribbean.

6 Includes China, Japan, Australia, Brunei, Indonesia, Macao, Malaysia, New Zealand, Papua New Guinea, Philippines and Asian Newly Industrialized Countries.

7 Asian Newly Industrialized Countries. Includes Hong Kong, Singapore, South Korea and Taiwan.

8 Association of Southeast Asian Nations. Includes Brunei, Cambodia, Indonesia, Laos, Malaysia, Myanmar, Philippines, Singapore, Thailand and Vietnam.

9 Includes Bahrain, Iran, Iraq, Israel, Jordan, Kuwait, Lebanon, Oman, Qatar, Saudi Arabia, Syria, United Arab Emirates and Yemen.

NOTES: Data may be revised in each of the three months after original publication.

Regions are not mutually exclusive.

Dash = Not available

Table 8. U.S. international price indexes and percent changes for selected transportation services: March 2011 to March 2012

[2000=100, unless otherwise noted]

Description	Relative importance Feb. 2012 ¹	Index		Percent change				
		Feb. 2012	Mar. 2012	Annual	Monthly			
				Mar. 2011 to Mar. 2012	Nov. 2011 to Dec. 2011	Dec. 2011 to Jan. 2012	Jan. 2012 to Feb. 2012	Feb. 2012 to Mar. 2012
Air Freight								
Import Air Freight	100.000	168.5	172.9	0.1	-0.4	-3.3	-1.6	2.6
Europe (Dec. 2003=100).....	24.911	161.7	166.6	12.0	-0.3	-2.3	-1.6	3.0
Asia.....	70.407	147.8	151.6	-3.9	-0.5	-3.8	-1.7	2.6
Export Air Freight	100.000	146.9	149.0	7.0	0.1	1.6	0.3	1.4
Europe (Dec. 2006=100).....	36.053	132.2	133.6	6.2	-0.6	1.5	0.5	1.1
Inbound Air Freight	100.000	155.2	158.3	0.8	-0.9	-2.1	-1.3	2.0
Europe (Dec. 2003=100).....	25.265	145.6	149.3	7.6	0.1	-1.6	-1.0	2.5
Asia.....	62.970	138.2	140.9	-1.3	-1.5	-2.6	-1.9	2.0
Outbound Air Freight	100.000	144.6	146.4	7.3	0.7	-0.3	0.3	1.2
Europe (Dec. 2003=100).....	31.059	163.4	164.8	6.0	-0.2	-0.4	0.7	0.9
Asia.....	48.866	135.2	137.3	8.5	1.1	-0.1	0.1	1.6
Air Passenger Fares								
Import Air Passenger Fares	100.000	180.5	178.7	10.9	1.6	0.2	0.3	-1.0
Europe.....	38.580	185.1	180.7	8.8	-2.0	4.8	0.2	-2.4
Asia.....	27.481	157.9	147.5	7.0	4.8	-4.1	1.3	-6.6
Latin America/Caribbean.....	12.291	177.6	178.2	9.3	8.0	-4.4	-0.6	0.3
Export Air Passenger Fares	100.000	186.6	184.5	6.8	3.8	2.3	-4.5	-1.1
Europe.....	27.447	219.2	211.5	16.0	-2.7	0.8	5.1	-3.5
Asia.....	27.102	162.0	167.7	2.8	2.7	6.2	-14.7	3.5
Latin America/Caribbean.....	26.376	238.5	238.6	28.6	7.3	3.7	12.3	0.0

¹ Relative importance figures are based on 2010 trade values.

NOTES: Data may be revised in each of the three months after original publication.

Dash = Not available

TECHNICAL NOTE

Import and Export Merchandise and Services Price Indexes -- All indexes use a modified Laspeyres formula and are not seasonally adjusted. Price indexes are reweighted annually, with a two-year lag in the weights. Published series use a base year of 2000=100 where possible. More detailed index series and additional information may be obtained at <http://www.bls.gov/mxp>, or by calling (202) 691-7101.

Merchandise Goods Classification Systems -- The merchandise price indexes are published using three classification systems. Items are classified by end use according to the Bureau of Economic Analysis Classification System, by industry according to the North American Industry Classification System (NAICS), and by product category according to the Harmonized System (HS). While classification by end use and product category are self-explanatory, some notes are in order for classifying items by industry. In the NAICS imports and exports tables, items are classified by output industry, not input industry. As an example, NAICS import index 326 (plastics and rubber products manufacturing) include outputs such as manufactured plastic rather than inputs such as petroleum. The NAICS classification structure also matches the classification system used by the PPI (Producer Price Index) to produce the NAICS primary products indexes.

Import Price Indexes -- Products have been classified by the Harmonized Tariff Schedule of the United States Annotated (TSUSA). Import prices are based on U.S. dollar prices paid by the U.S. importer. The prices are generally either "free on board" (f.o.b.) foreign port or "cost, insurance, and freight" (c.i.f.) U.S. port transaction prices, depending on the practices of the individual industry. The index for crude petroleum is calculated from data collected by the U.S. Department of Energy.

Export Price Indexes -- Products have been classified by the Harmonized Schedule B classification system of the U.S. Bureau of the Census. The prices used are generally either "free alongside ship" (f.a.s.) factory or "free on board" (f.o.b.) transaction prices, depending on the practices of the individual industry. Prices used in the grain index, excluding rice, are obtained from the U.S. Department of Agriculture.

Services Price Indexes -- Starting in September 2008 the Import Air Passenger Fares Indexes represent changes in the average revenue per passenger received by foreign carriers from U.S. residents and are calculated from data obtained from an airline consulting service. These data include tickets sold by travel agencies and travel websites. Tickets sold directly by the airlines are excluded, as are frequent flyer tickets generally. Starting in January 2008 the Export Air Passenger Fares Indexes represent changes in the average revenue per passenger received by U.S. carriers from foreign residents and are calculated from data collected directly from airlines. These data include frequent flyer tickets and those sold by consolidators. Taxes and fees are included in the Import Air Passenger Fares Index and excluded from the Export Air Passenger Fares Index. The Air Freight Indexes are calculated from data collected directly from airlines. These data exclude mail and passenger baggage. The scope of the service being priced is the movement of freight from airport to airport only, and does not include any ground transportation or port service. The Air Freight Indexes are presented using two definitions: Balance of Payments (which represent transactions between U.S. and foreign residents) and International (which represent transactions inbound to and outbound from the U.S.). Fact sheets specifying detailed information for each services industry are available at <http://www.bls.gov/mxp> under "MXP Publications."

Import Indexes by Locality of Origin -- Prices used in these indexes are a subset of the data collected for the Import Price Indexes. Beginning with January 2002, the indexes are defined by locality of origin using a nomenclature based upon the North American Industry Classification System (NAICS). Nonmanufactured goods are defined as NAICS 11 and 21 and manufactured goods are defined as NAICS 31-33.

Revision Policy -- To reflect the availability of late reports and corrections by respondents, monthly data may be revised in each of the three months after original publication. After three months, no further data revisions take place. So, for example, data released in the January release will be subject to revision in the releases for February, March, and April.

Uses of the Data -- The primary use of the indexes is to deflate trade statistics, notably the foreign trade sector of the National Income and Product Accounts constructed by the Department of Commerce. Other published indexes are useful for general market analysis. For trade in international services, Balance of Payments indexes are used for deflating National Income and Product Accounts, while International indexes are more appropriate for market analysis. Merchandise and services indexes also can be used to study U.S. competitiveness and to compute price elasticities, and the merchandise import indexes by country or region of origin are useful in terms of trade analysis.

E-Mail Subscription -- The U.S. Import and Export Price Indexes news release is available through an e-mail subscription service at (<http://www.bls.gov/bls/list.htm>).

Additional Information -- More detailed data are available on the Import/Export Price Indexes home page at (<http://www.bls.gov/mxp>). Flat Files and the FTP server are available for users requiring access to either a large volume of time series data or other related documentation. The FTP site can be accessed at <ftp://ftp.bls.gov>. For technical assistance in using the BLS Internet site, send e-mail to (labstat.helpdesk@bls.gov). For Import/Export Price Index data requests, send e-mail to (mxpinfo@bls.gov).

Information from this release will be made available to sensory impaired individuals upon request. Voice phone: 202-691-5200; Federal Relay Service: 1-800-877-8339.