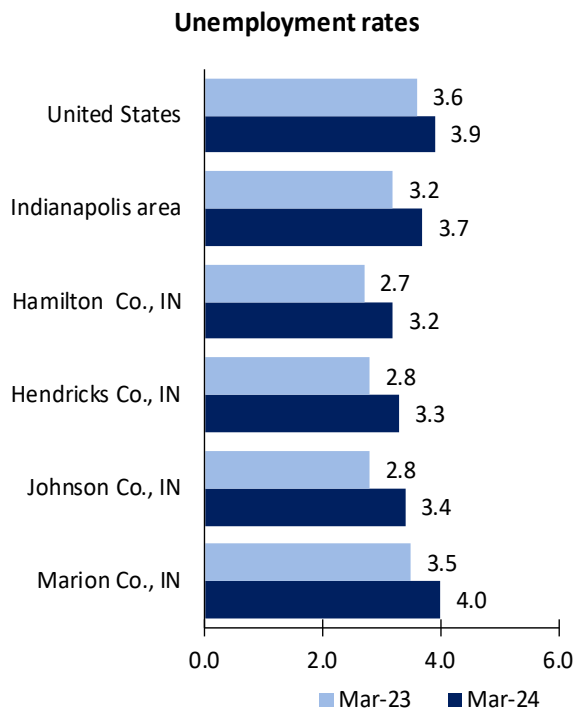


# Indianapolis Area Economic Summary

Updated May 06, 2024

This summary presents a sampling of economic information for the area; supplemental data are provided for regions and the nation. Subjects include **unemployment, employment, wages, prices, spending, and benefits**. All data are not seasonally adjusted and some may be subject to revision. Area definitions may differ by subject. For more area summaries and geographic definitions, see [www.bls.gov/regions/economic-summaries.htm](http://www.bls.gov/regions/economic-summaries.htm).

## Unemployment rates for the nation and selected areas

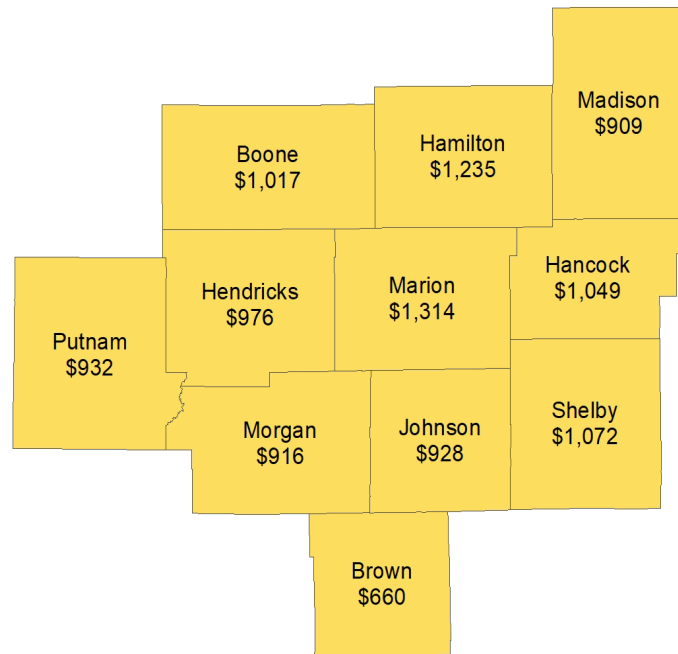


Source: U.S. BLS, Local Area Unemployment Statistics.

## Average weekly wages for all industries by county

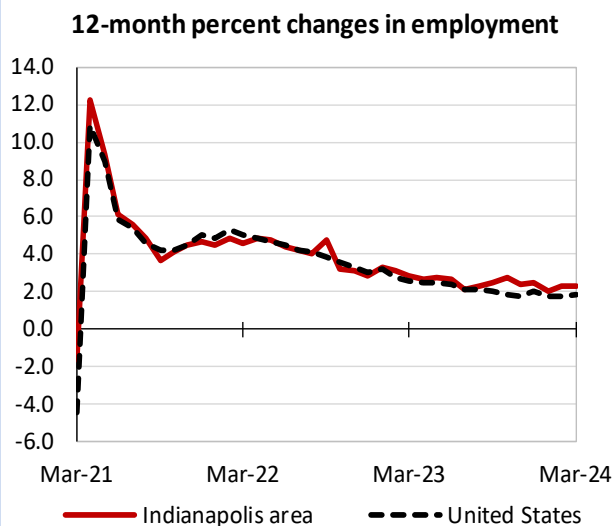
### Indianapolis area, third quarter 2023

(U.S. = \$1,334; Area = \$1,205)



Source: U.S. BLS, Quarterly Census of Employment and Wages.

## Over-the-year changes in employment on nonfarm payrolls and employment by major industry sector



Source: U.S. BLS, Current Employment Statistics.

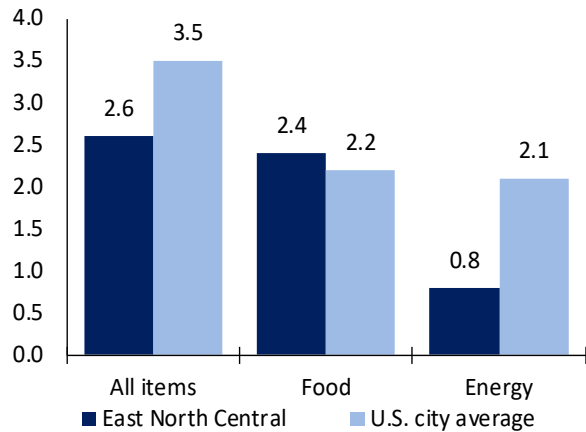
Indianapolis area employment (number in thousands)	Mar. 2024	Change from Mar. 2023 to Mar. 2024	
		Number	Percent
Total nonfarm	1,171.7	26.6	2.3
Mining and logging	0.8	0.0	0.0
Construction	63.3	4.3	7.3
Manufacturing	98.1	1.1	1.1
Trade, transportation, and utilities	246.1	3.1	1.3
Information	11.9	-0.5	-4.0
Financial activities	74.3	-0.2	-0.3
Professional and business services	184.4	-1.7	-0.9
Education and health services	191.0	13.2	7.4
Leisure and hospitality	109.8	1.4	1.3
Other services	46.0	1.6	3.6
Government	146.0	4.3	3.0

Source: U.S. BLS, Current Employment Statistics.



Over-the-year change in the prices paid by urban consumers for selected categories

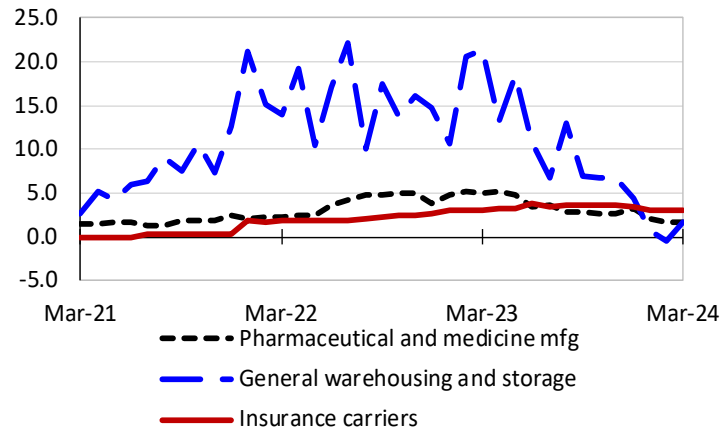
12-month percent change in CPI-U, March 2024



Source: U.S. BLS, Consumer Price Index.

Over-the-year changes in the selling prices received by producers for selected industries nationwide

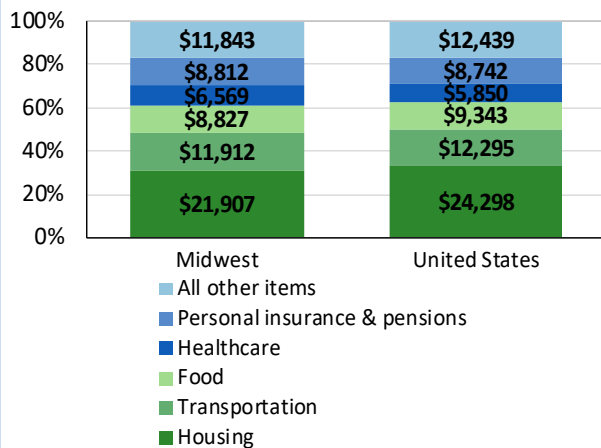
12-month percent changes in PPI



Source: U.S. BLS, Producer Price Index.

Average annual spending and percent distribution for selected categories

Average annual expenditures, United States and Midwest, 2022



Source: U.S. BLS, Consumer Expenditure Survey.

Average hourly wages for selected occupations

Occupation	Indianapolis area	United States
All occupations	\$29.11	\$31.48
Insurance sales agents	37.28	38.32
Respiratory therapists	34.28	38.62
Machinists	24.89	26.25
Bookkeeping, accounting, and auditing clerks	22.99	23.84
Laborers and freight, stock, and material movers, hand	19.38	19.12
Waiters and waitresses	14.74	17.56

Source: U.S. BLS, Occupational Employment and Wage Statistics, May 2023.

Employer costs per hour worked for wages and selected employee benefits by geographic division

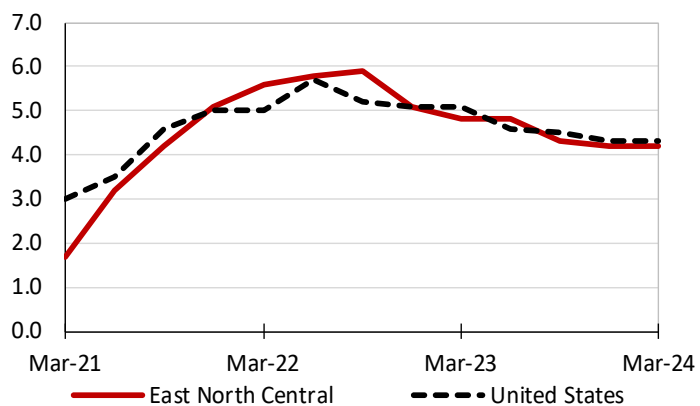
Private industry, December 2023	East North Central (1)	United States
Total compensation	\$41.90	\$43.11
Wages and salaries	29.01	30.33
Total benefits	12.89	12.77
Paid leave	3.05	3.26
Vacation	1.61	1.67
Supplemental pay	1.94	1.71
Insurance	3.31	3.14
Retirement and savings	1.60	1.50
Legally required benefits	3.00	3.17

(1) The states that compose the East North Central census division are: IL, IN, MI, OH, and WI.

Source: U.S. BLS, Employer Costs for Employee Compensation.

Over-the-year changes in wages and salaries

12-month percent changes in ECI



Source: U.S. BLS, Employment Cost Index.

