

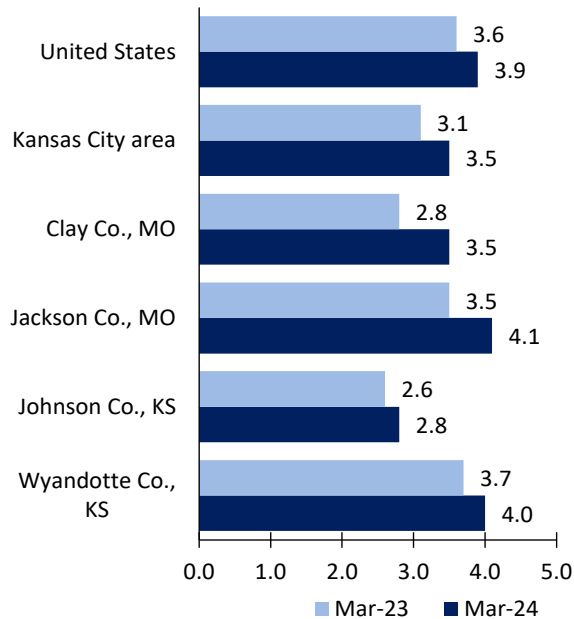
Kansas City Area Economic Summary

Updated May 07, 2024

This summary presents a sampling of economic information for the area; supplemental data are provided for regions and the nation. Subjects include **unemployment, employment, wages, prices, spending, and benefits**. All data are not seasonally adjusted and some may be subject to revision. Area definitions may differ by subject. For more area summaries and geographic definitions, see www.bls.gov/regions/economic-summaries.htm.

Unemployment rates for the nation and selected areas

Unemployment rates

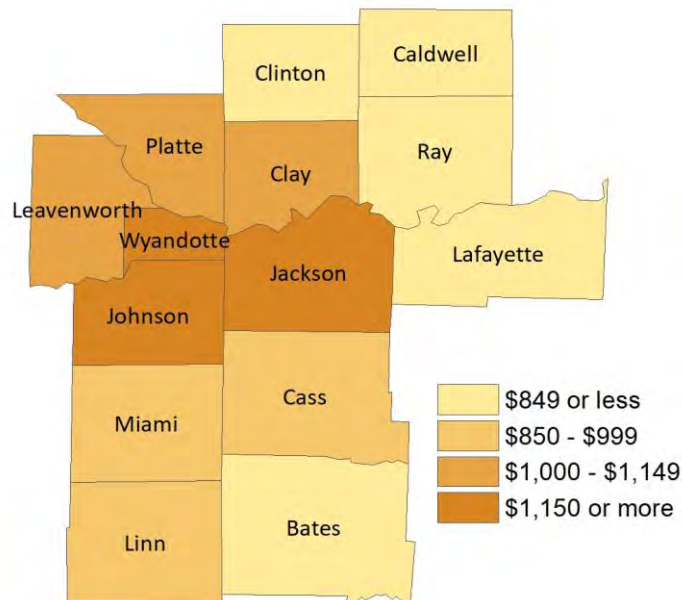


Source: U.S. BLS, Local Area Unemployment Statistics.

Average weekly wages for all industries by county

Kansas City area, third quarter 2023

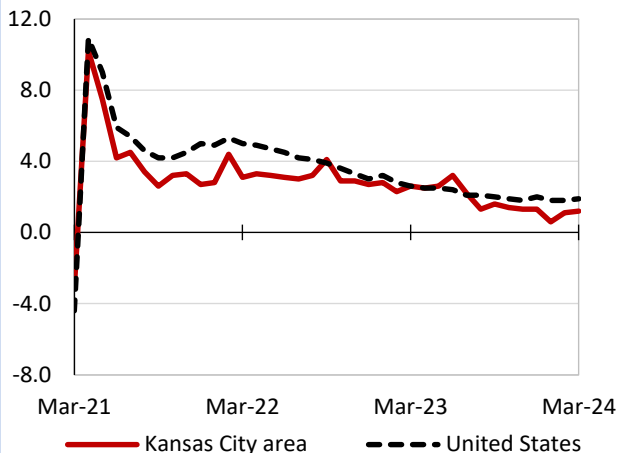
(U.S. = \$1,334; Area = \$1,234)



Source: U.S. BLS, Quarterly Census of Employment and Wages.

Over-the-year changes in employment on nonfarm payrolls and employment by major industry sector

12-month percent changes in employment



Source: U.S. BLS, Current Employment Statistics.

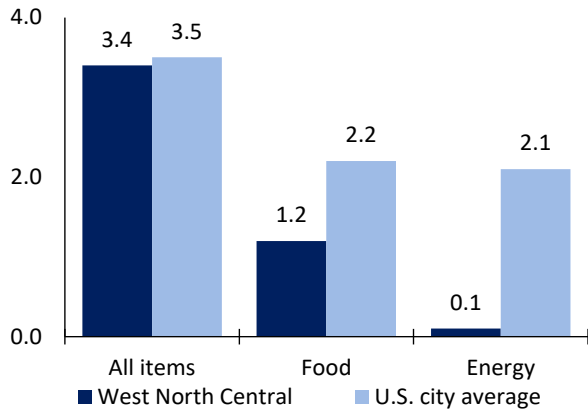
| Kansas City area employment (number in thousands) | Mar. 2024 | Change from Mar. 2023 to Mar. 2024 | |
|---------------------------------------------------|-----------|------------------------------------|---------|
| | | Number | Percent |
| Total nonfarm | 1,135.1 | 13.5 | 1.2 |
| Mining, logging, and construction | 57.7 | 0.2 | 0.3 |
| Manufacturing | 88.4 | 0.2 | 0.2 |
| Trade, transportation, and utilities | 229.8 | 2.5 | 1.1 |
| Information | 17.0 | -0.5 | -2.9 |
| Financial activities | 76.4 | -0.2 | -0.3 |
| Professional and business services | 179.8 | -4.5 | -2.4 |
| Education and health services | 171.8 | 7.7 | 4.7 |
| Leisure and hospitality | 115.1 | 2.8 | 2.5 |
| Other services | 47.5 | 0.8 | 1.7 |
| Government | 151.6 | 4.5 | 3.1 |

Source: U.S. BLS, Current Employment Statistics.



Over-the-year change in the prices paid by urban consumers for selected categories

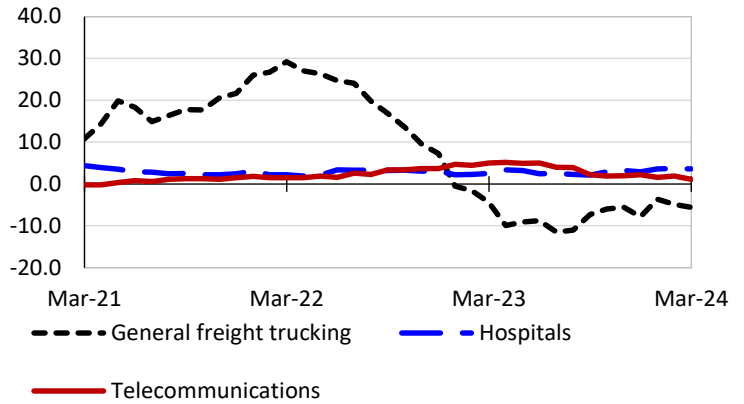
12-month percent change in CPI-U, March 2024



Source: U.S. BLS, Consumer Price Index.

Over-the-year changes in the selling prices received by producers for selected industries nationwide

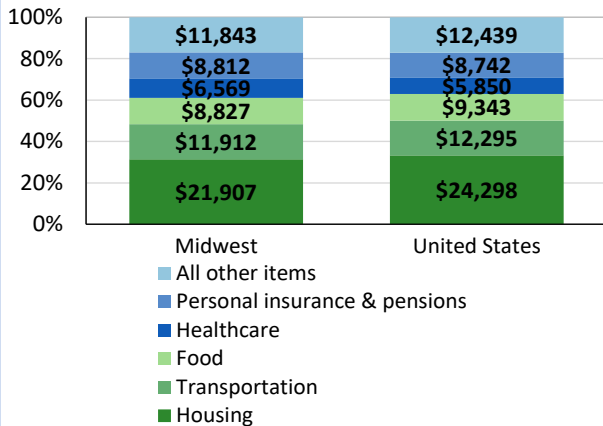
12-month percent changes in PPI



Source: U.S. BLS, Producer Price Index.

Average annual spending and percent distribution for selected categories

Average annual expenditures, United States and Midwest, 2022



Source: U.S. BLS, Consumer Expenditure Survey.

Average hourly wages for selected occupations

| Occupation | Kansas City area | United States |
|-----------------------------------------|------------------|---------------|
| All occupations | \$29.63 | \$31.48 |
| Software developers | 54.31 | 66.40 |
| Registered nurses | 38.99 | 45.42 |
| Heavy and tractor-trailer truck drivers | 27.64 | 26.92 |
| Customer service representatives | 20.65 | 20.92 |
| Stockers and order fillers | 18.73 | 18.27 |
| Waiters and waitresses | 18.02 | 17.56 |

Source: U.S. BLS, Occupational Employment and Wage Statistics, May 2023.

Employer costs per hour worked for wages and selected employee benefits by geographic division

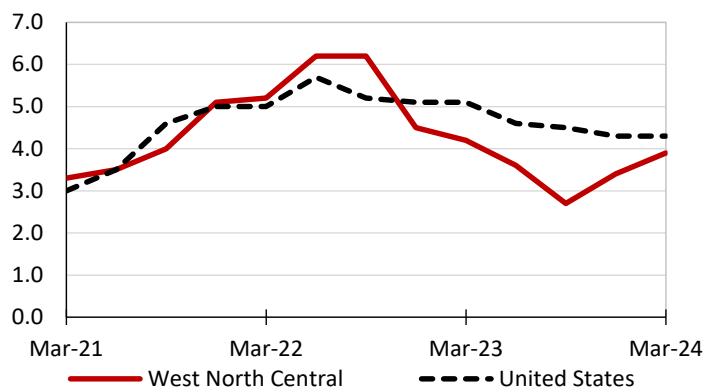
| Private industry, December 2023 | West North Central (1) | United States |
|---------------------------------|------------------------|---------------|
| Total compensation | \$38.45 | \$43.11 |
| Wages and salaries | 26.65 | 30.33 |
| Total benefits | 11.80 | 12.77 |
| Paid leave | 2.71 | 3.26 |
| Vacation | 1.43 | 1.67 |
| Supplemental pay | 1.71 | 1.71 |
| Insurance | 3.37 | 3.14 |
| Retirement and savings | 1.17 | 1.50 |
| Legally required benefits | 2.83 | 3.17 |

(1) The states that compose the West North Central census division are: IA, KS, MN, MO, NE, ND, and SD.

Source: U.S. BLS, Employer Costs for Employee Compensation.

Over-the-year changes in wages and salaries

12-month percent changes in ECI



Source: U.S. BLS, Employment Cost Index.

