

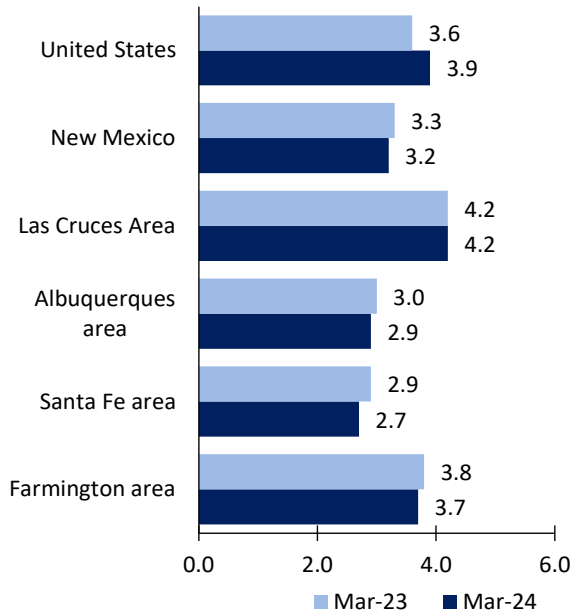
Las Cruces Area Economic Summary

Updated May 07, 2024

This summary presents a sampling of economic information for the area; supplemental data are provided for regions and the nation. Subjects include **unemployment, employment, wages, prices, spending, and benefits**. All data are not seasonally adjusted and some may be subject to revision. Area definitions may differ by subject. For more area summaries and geographic definitions, see www.bls.gov/regions/economic-summaries.htm.

Unemployment rates for the nation and selected areas

Unemployment rates

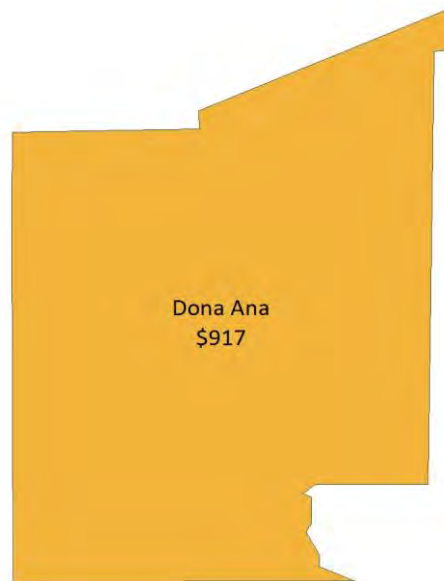


Source: U.S. BLS, Local Area Unemployment Statistics.

Average weekly wages for all industries by county

Las Cruces area, third quarter 2023

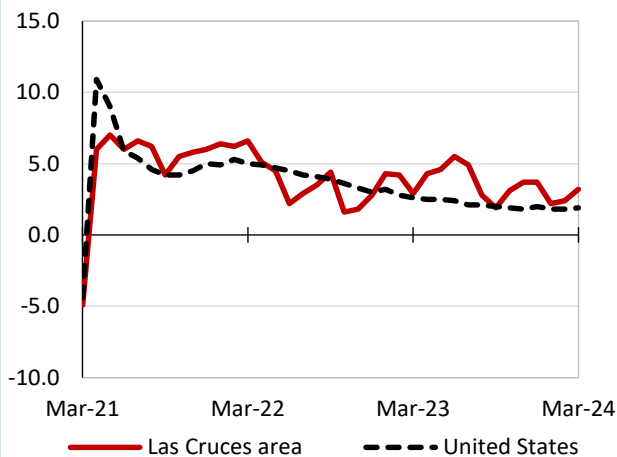
(U.S. = \$1,334; Area = \$917)



Source: U.S. BLS, Quarterly Census of Employment and Wages.

Over-the-year changes in employment on nonfarm payrolls and employment by major industry sector

12-month percent changes in employment



Source: U.S. BLS, Current Employment Statistics.

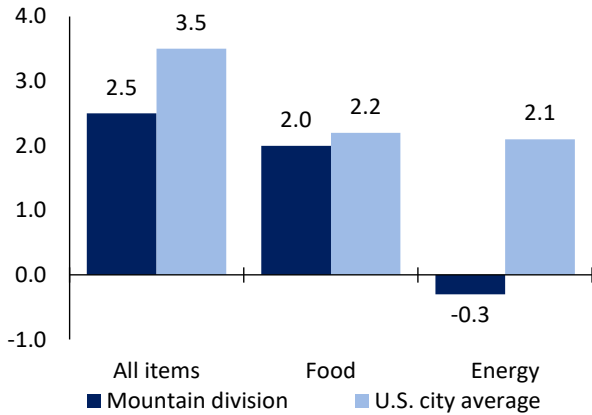
| Las Cruces area employment (number in thousands) | Mar. 2024 | Change from Mar. 2023 to Mar. 2024 | |
|---|-----------|------------------------------------|---------|
| | | Number | Percent |
| Total nonfarm | 81.0 | 2.5 | 3.2 |
| Mining, logging, and construction | 4.2 | 0.3 | 7.7 |
| Manufacturing | 3.5 | 0.3 | 9.4 |
| Trade, transportation, and utilities | 11.9 | 0.0 | 0.0 |
| Information | 0.6 | 0.0 | 0.0 |
| Financial activities | 2.7 | 0.0 | 0.0 |
| Professional and business services | 7.4 | 0.3 | 4.2 |
| Education and health services | 17.6 | -0.1 | -0.6 |
| Leisure and hospitality | 9.4 | 0.5 | 5.6 |
| Other services | 2.1 | 0.2 | 10.5 |
| Government | 21.6 | 1.0 | 4.9 |

Source: U.S. BLS, Current Employment Statistics.



Over-the-year change in the prices paid by urban consumers for selected categories

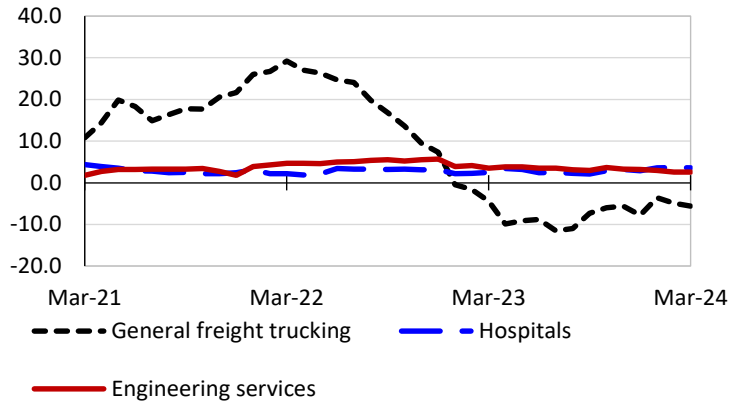
12-month percent change in CPI-U, March 2024



Source: U.S. BLS, Consumer Price Index.

Over-the-year changes in the selling prices received by producers for selected industries nationwide

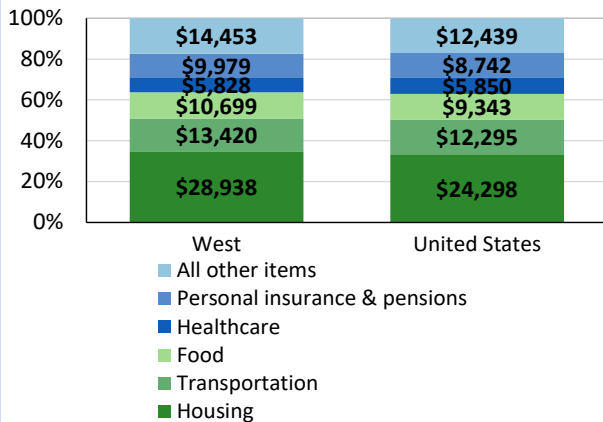
12-month percent changes in PPI



Source: U.S. BLS, Producer Price Index.

Average annual spending and percent distribution for selected categories

Average annual expenditures, United States and West, 2022



Source: U.S. BLS, Consumer Expenditure Survey.

Average hourly wages for selected occupations

| Occupation | Las Cruces area | United States |
|-----------------------------|-----------------|---------------|
| All occupations | \$24.85 | \$31.48 |
| Registered nurses | 39.88 | 45.42 |
| Accountants and auditors | 33.25 | 43.65 |
| Human resources specialists | 27.78 | 36.57 |
| Construction laborers | 17.82 | 23.69 |
| Retail salespersons | 15.30 | 17.64 |
| Cooks, fast food | 13.52 | 14.31 |

Source: U.S. BLS, Occupational Employment and Wage Statistics, May 2023.

Employer costs per hour worked for wages and selected employee benefits by geographic division

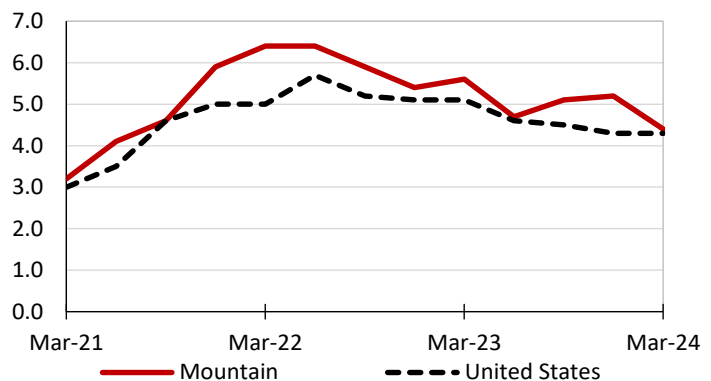
| Private industry, December 2023 | Mountain (1) | United States |
|---------------------------------|--------------|---------------|
| Total compensation | \$37.88 | \$43.11 |
| Wages and salaries | 27.24 | 30.33 |
| Total benefits | 10.64 | 12.77 |
| Paid leave | 2.62 | 3.26 |
| Vacation | 1.30 | 1.67 |
| Supplemental pay | 1.41 | 1.71 |
| Insurance | 2.59 | 3.14 |
| Retirement and savings | 1.15 | 1.50 |
| Legally required benefits | 2.87 | 3.17 |

(1) The states that compose the Mountain census division are: AZ, CO, ID, MT, NV, NM, UT, and WY.

Source: U.S. BLS, Employer Costs for Employee Compensation.

Over-the-year changes in wages and salaries

12-month percent changes in ECI



Source: U.S. BLS, Employment Cost Index.

