

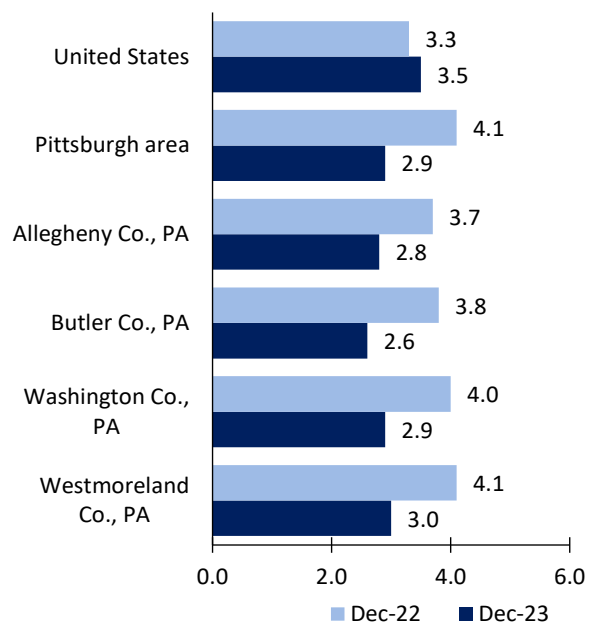
Pittsburgh area Economic Summary

Updated February 07, 2024

This summary presents a sampling of economic information for the area; supplemental data are provided for regions and the nation. Subjects include **unemployment, employment, wages, prices, spending, and benefits**. All data are not seasonally adjusted and some may be subject to revision. Area definitions may differ by subject. For more area summaries and geographic definitions, see www.bls.gov/regions/economic-summaries.htm.

Unemployment rates for the nation and selected areas

Unemployment rates

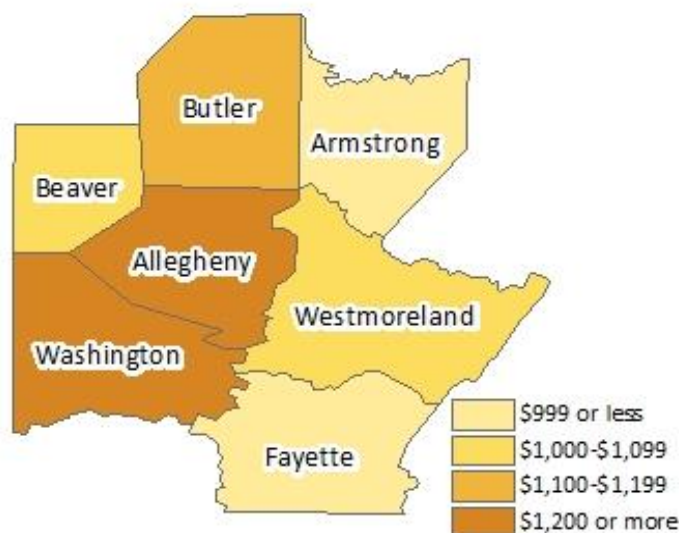


Source: U.S. BLS, Local Area Unemployment Statistics.

Average weekly wages for all industries by county

Pittsburgh area, second quarter 2023

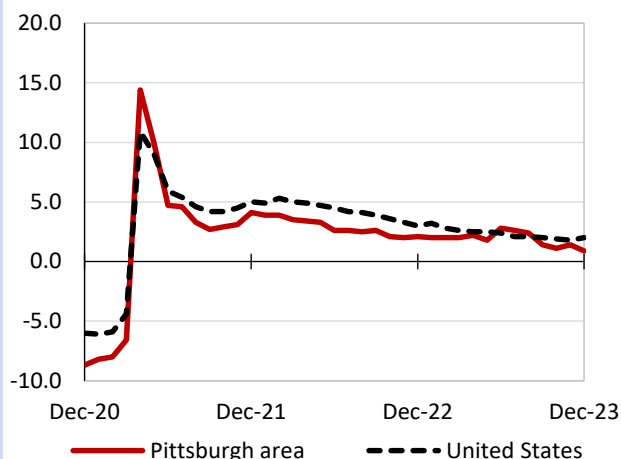
(U.S. = \$1,332; Area = \$1,277)



Source: U.S. BLS, Quarterly Census of Employment and Wages.

Over-the-year changes in employment on nonfarm payrolls and employment by major industry sector

12-month percent changes in employment



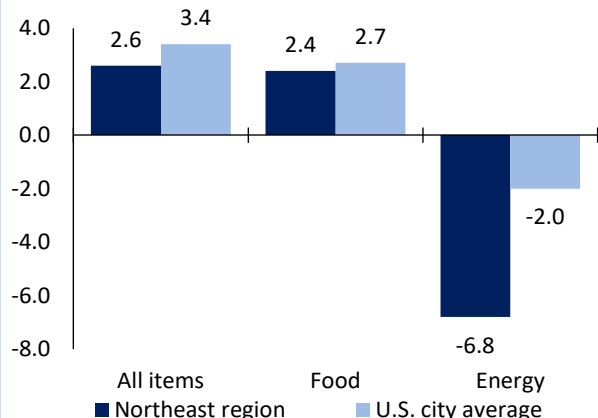
Source: U.S. BLS, Current Employment Statistics.

Pittsburgh area employment (number in thousands)	Dec. 2023	Change from Dec. 2022 to Dec. 2023	
		Number	Percent
Total nonfarm	1,176.3	10.8	0.9
Mining and logging	8.2	0.1	1.2
Construction	55.4	0.3	0.5
Manufacturing	86.0	2.5	3.0
Trade, transportation, and utilities	211.9	1.4	0.7
Information	21.9	0.1	0.5
Financial activities	77.8	2.1	2.8
Professional and business services	192.3	-1.0	-0.5
Education and health services	251.8	4.9	2.0
Leisure and hospitality	110.5	-1.1	-1.0
Other services	47.7	1.3	2.8
Government	112.8	0.2	0.2

Source: U.S. BLS, Current Employment Statistics.

Over-the-year change in the prices paid by urban consumers for selected categories

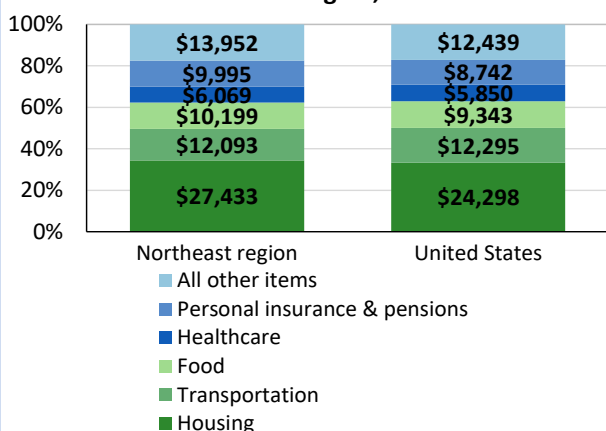
12-month percent change in CPI-U, December 2023



Source: U.S. BLS, Consumer Price Index.

Average annual spending and percent distribution for selected categories

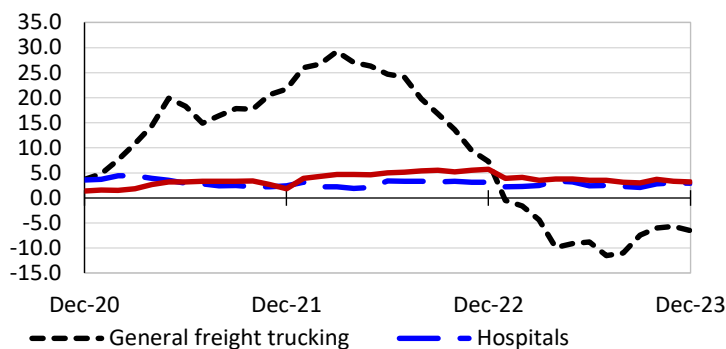
Average annual expenditures, United States and Northeast region, 2022



Source: U.S. BLS, Consumer Expenditure Survey.

Over-the-year changes in the selling prices received by producers for selected industries nationwide

12-month percent changes in PPI



Source: U.S. BLS, Producer Price Index.

Average hourly wages for selected occupations

Occupation	Pittsburgh area	United States
All occupations	\$27.90	\$29.76
Civil engineers	44.31	46.82
Accountants and auditors	36.77	41.70
Carpenters	27.30	27.99
Substance abuse, behavioral disorder, and mental health counselors	23.90	27.03
Office clerks, general	19.95	19.78
Cashiers	12.18	13.81

Source: U.S. BLS, Occupational Employment and Wage Statistics, May 2022.

Employer costs per hour worked for wages and selected employee benefits by geographic division

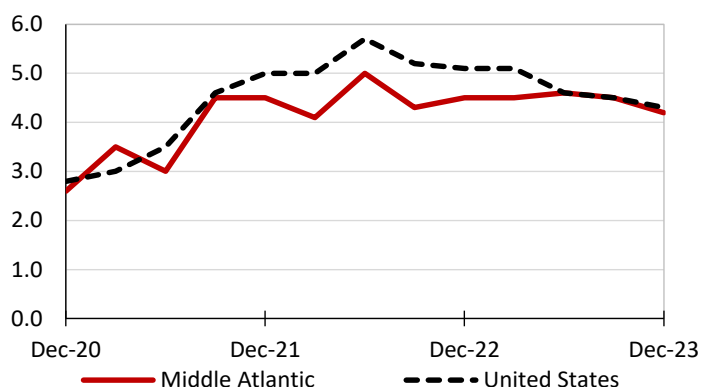
Private industry, September 2023	Middle Atlantic	United States
Total compensation	\$48.39	\$41.53
Wages and salaries	33.61	29.34
Total benefits	14.78	12.19
Paid leave	3.75	3.09
Vacation	1.88	1.59
Supplemental pay	1.71	1.55
Insurance	3.70	3.04
Retirement and savings	1.98	1.41
Legally required benefits	3.65	3.11

(1) The states that compose the Middle Atlantic census division are: NJ, NY, and PA.

Source: U.S. BLS, Employer Costs for Employee Compensation.

Over-the-year changes in wages and salaries

12-month percent changes in ECI



Source: U.S. BLS, Employment Cost Index.