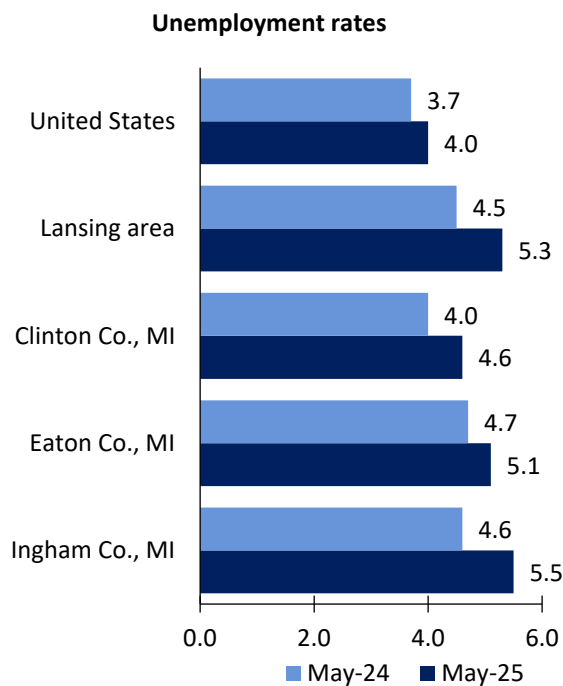


# Lansing Area Economic Summary

Updated July 10, 2025

This summary presents a sampling of economic information for the area; supplemental data are provided for regions and the nation. Subjects include **unemployment, employment, wages, prices, spending, and benefits**. All data are not seasonally adjusted and some may be subject to revision. Area definitions may differ by subject. For more area summaries and geographic definitions, see <https://www.bls.gov/regions/economic-summaries.htm>.

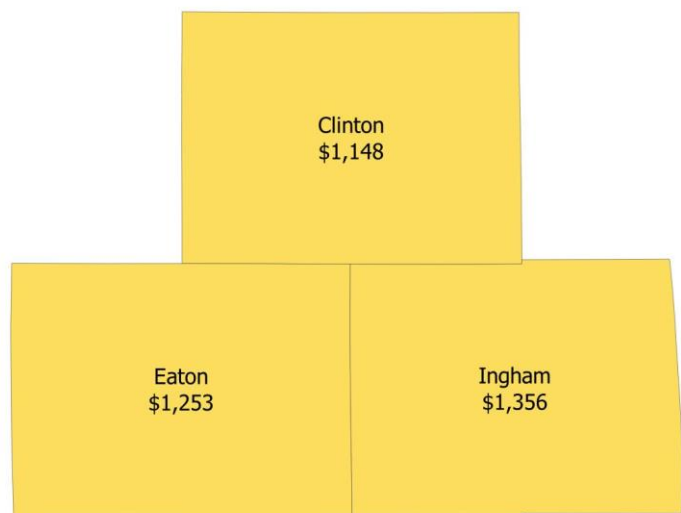
## Unemployment rates for the nation and selected areas



Source: U.S. BLS, Local Area Unemployment Statistics.

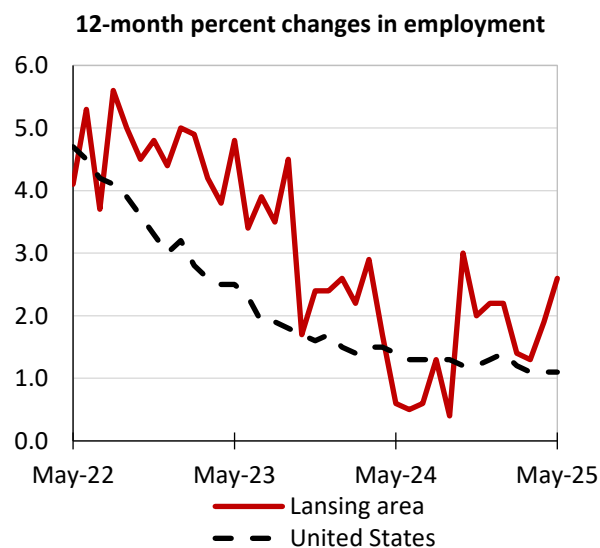
## Average weekly wages for all industries by county

Lansing area, fourth quarter 2024  
(U.S. = \$1,507; Area = \$1,317)



Source: U.S. BLS, Quarterly Census of Employment and Wages.

## Employment on nonfarm payrolls and employment by major industry sector, over-the-year changes



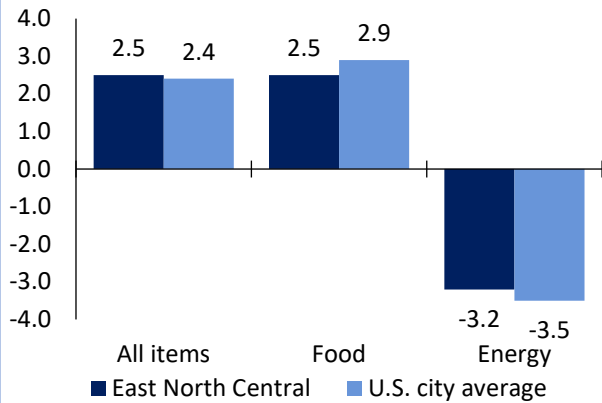
Lansing area employment (number in thousands)	May 2025	Change from May 2024 to May 2025	
		Number	Percent
Total nonfarm	250.2	6.3	2.6
Mining, logging, and construction	11.3	0.8	7.6
Manufacturing	21.3	0.7	3.4
Trade, transportation, and utilities	36.5	0.2	0.6
Information	3.8	0.1	2.7
Financial activities	19.0	0.2	1.1
Professional and business services	25.2	-0.4	-1.6
Education and health services	35.0	0.9	2.6
Leisure and hospitality	19.0	-0.1	-0.5
Other services	10.8	0.1	0.9
Government	68.3	3.8	5.9

Source: U.S. BLS, Current Employment Statistics.



Prices paid by urban consumers for selected categories, over-the-year change

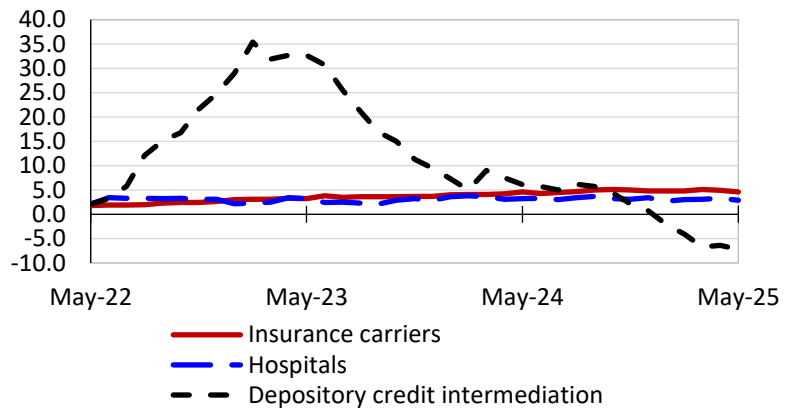
12-month percent change in CPI-U, May 2025



Source: U.S. BLS, Consumer Price Index.

Selling prices received by producers for selected industries nationwide, over-the-year change

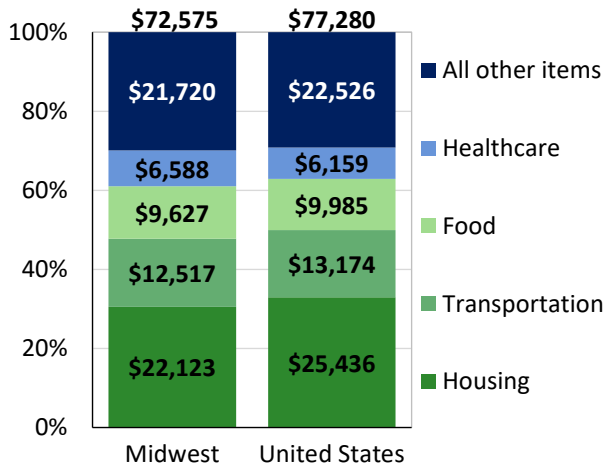
12-month percent changes in PPI



Source: U.S. BLS, Producer Price Index.

Average annual spending and percent distribution for selected categories

Average annual expenditures, 2023



Source: U.S. BLS, Consumer Expenditure Survey.

Average hourly wages for selected occupations, May 2024

Occupation	Lansing area	United States
All occupations	\$30.56	\$32.66
Administrative services managers	55.25	60.59
Software developers	47.72	69.50
Instructional coordinators	38.47	37.31
Claims adjusters, examiners, and investigators	35.41	37.87
Miscellaneous assemblers and fabricators	26.92	21.57
Insurance claims and policy processing clerks	22.08	24.99

Source: U.S. BLS, Occupational Employment and Wage Statistics.

Employer costs per hour worked for wages and selected employee benefits by census division

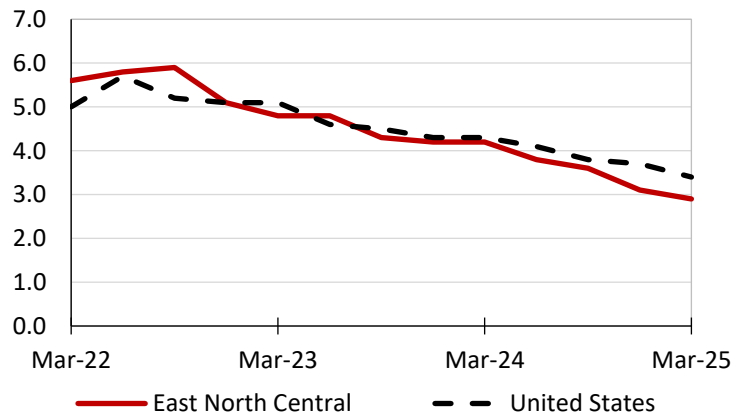
Private industry, March 2025	East North Central	United States
Total compensation	\$42.73	\$45.38
Wages and salaries	29.45	31.89
Total benefits	13.28	13.49
Paid leave	3.07	3.43
Vacation	1.57	1.74
Supplemental pay	2.06	1.89
Insurance	3.46	3.34
Retirement and savings	1.62	1.53
Legally required benefits	3.06	3.29

Map of Census Regions and Divisions

Source: U.S. BLS, Employer Costs for Employee Compensation.

Changes in wages and salaries over-the-year

12-month percent changes in ECI



Source: U.S. BLS, Employment Cost Index.