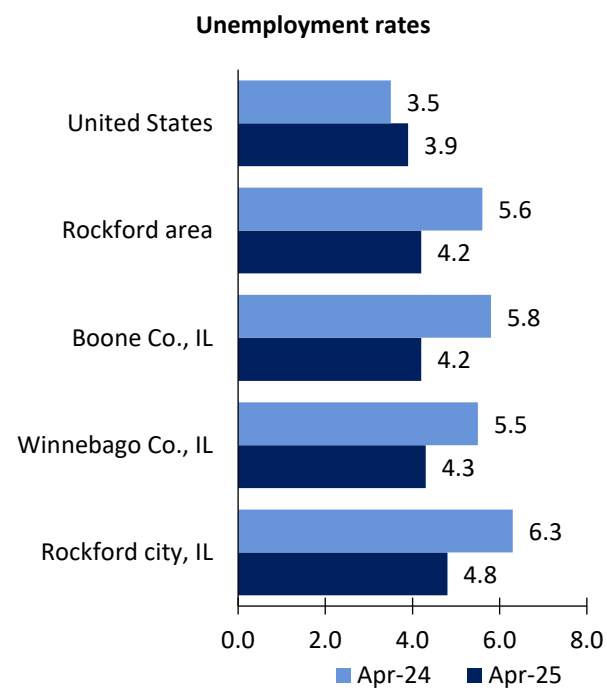


Rockford Area Economic Summary

Updated May 29, 2025

This summary presents a sampling of economic information for the area; supplemental data are provided for regions and the nation. Subjects include **unemployment, employment, wages, prices, spending, and benefits**. All data are not seasonally adjusted and some may be subject to revision. Area definitions may differ by subject. For more area summaries and geographic definitions, see <https://www.bls.gov/regions/economic-summaries.htm>.

Unemployment rates for the nation and selected areas



Source: U.S. BLS, Local Area Unemployment Statistics.

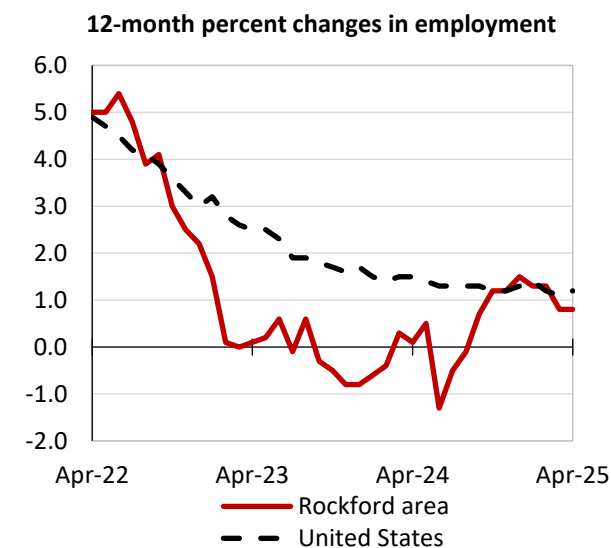
Average weekly wages for all industries by county

Rockford area, third quarter 2024
(U.S. = \$1,394; Area = \$1,110)



Source: U.S. BLS, Quarterly Census of Employment and Wages.

Employment on nonfarm payrolls and employment by major industry sector, over-the-year changes



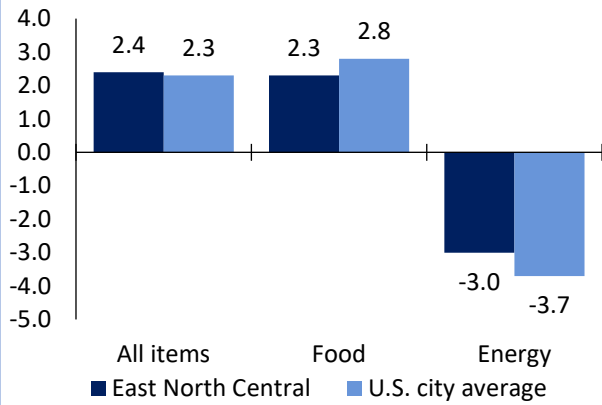
Rockford area employment (number in thousands)	Apr. 2025	Change from Apr. 2024 to Apr. 2025	
		Number	Percent
Total nonfarm	146.2	1.2	0.8
Mining, logging, and construction	6.2	0.3	5.1
Manufacturing	24.2	-0.8	-3.2
Trade, transportation, and utilities	30.3	0.2	0.7
Information	1.3	0.0	0.0
Financial activities	4.3	0.1	2.4
Professional and business services	14.3	-0.2	-1.4
Education and health services	27.1	0.7	2.7
Leisure and hospitality	14.8	0.5	3.5
Other services	7.3	0.0	0.0
Government	16.4	0.4	2.5

Source: U.S. BLS, Current Employment Statistics.



Prices paid by urban consumers for selected categories, over-the-year change

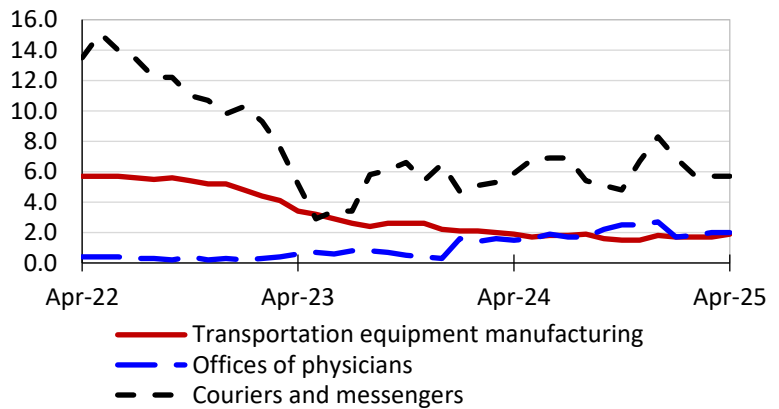
12-month percent change in CPI-U, April 2025



Source: U.S. BLS, Consumer Price Index.

Selling prices received by producers for selected industries nationwide, over-the-year change

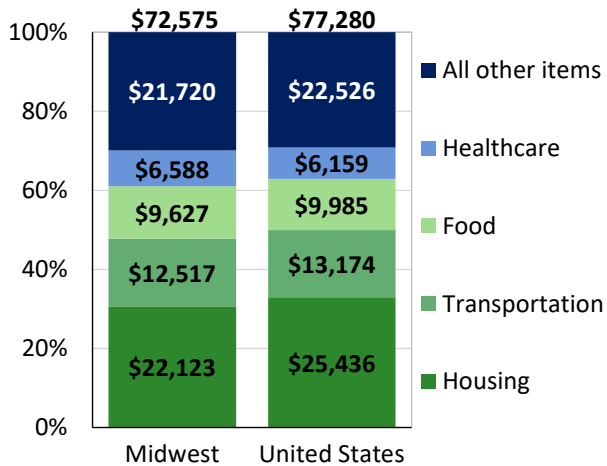
12-month percent changes in PPI



Source: U.S. BLS, Producer Price Index.

Average annual spending and percent distribution for selected categories

Average annual expenditures, 2023



Source: U.S. BLS, Consumer Expenditure Survey.

Average hourly wages for selected occupations, May 2024

Occupation	Rockford area	United States
All occupations	\$28.43	\$32.66
Industrial production managers	56.36	62.11
Registered nurses	40.50	47.32
Maintenance and repair workers, general	26.28	25.21
Computer numerically controlled tool operators	23.33	25.43
Office clerks, general	20.69	21.86
Laborers and freight, stock, and material movers, hand	20.27	19.91

Source: U.S. BLS, Occupational Employment and Wage Statistics.

Employer costs per hour worked for wages and selected employee benefits by census division

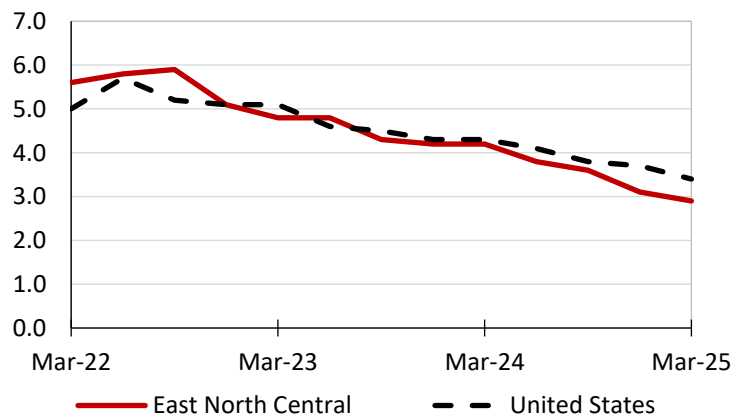
Private industry, December 2024	East North Central	United States
Total compensation	\$42.07	\$44.67
Wages and salaries	29.08	31.47
Total benefits	12.99	13.20
Paid leave	3.04	3.38
Vacation	1.54	1.71
Supplemental pay	2.00	1.84
Insurance	3.34	3.22
Retirement and savings	1.60	1.52
Legally required benefits	3.02	3.24

Map of Census Regions and Divisions

Source: U.S. BLS, Employer Costs for Employee Compensation.

Changes in wages and salaries over-the-year

12-month percent changes in ECI



Source: U.S. BLS, Employment Cost Index.