

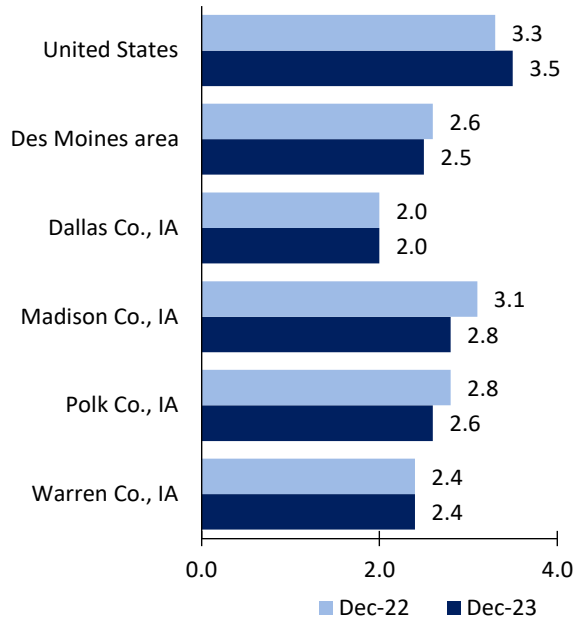
# Des Moines Area Economic Summary

Updated March 05, 2024

This summary presents a sampling of economic information for the area; supplemental data are provided for regions and the nation. Subjects include **unemployment, employment, wages, prices, spending, and benefits**. All data are not seasonally adjusted and some may be subject to revision. Area definitions may differ by subject. For more area summaries and geographic definitions, see [www.bls.gov/regions/economic-summaries.htm](http://www.bls.gov/regions/economic-summaries.htm).

## Unemployment rates for the nation and selected areas

### Unemployment rates

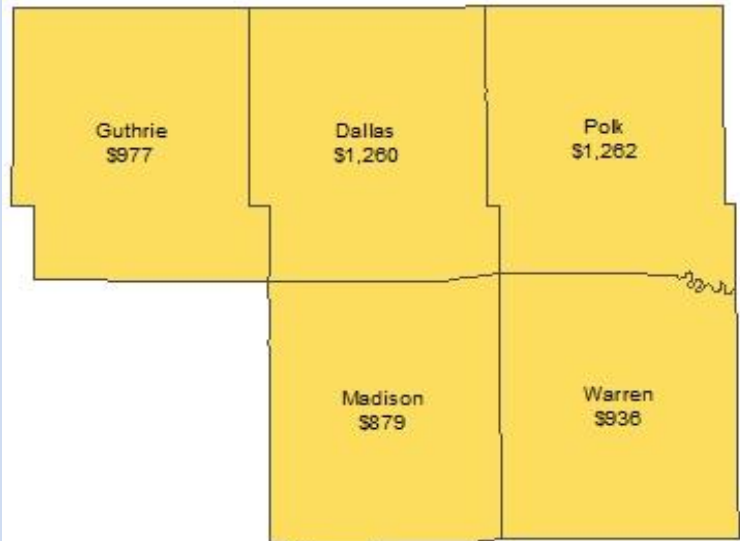


Source: U.S. BLS, Local Area Unemployment Statistics.

## Average weekly wages for all industries by county

### Des Moines area, second quarter 2023

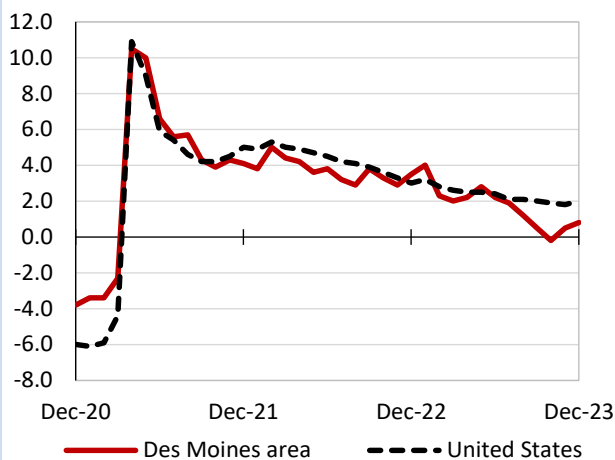
(U.S. = \$1,332; Area = \$1,244)



Source: U.S. BLS, Quarterly Census of Employment and Wages.

## Over-the-year changes in employment on nonfarm payrolls and employment by major industry sector

### 12-month percent changes in employment



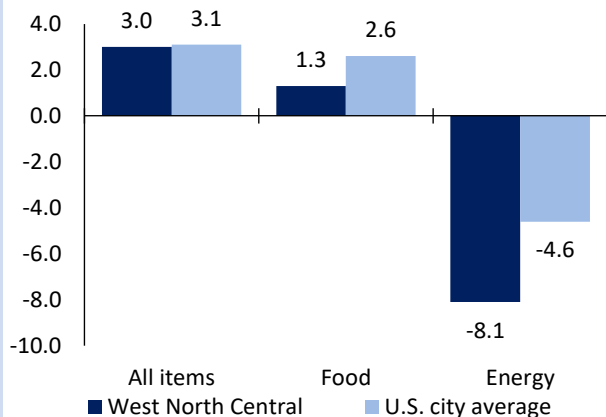
Source: U.S. BLS, Current Employment Statistics.

Des Moines area employment (number in thousands)	Dec. 2023	Change from Dec. 2022 to Dec. 2023	
		Number	Percent
Total nonfarm	394.5	3.1	0.8
Mining, logging, and construction	22.7	-0.4	-1.7
Manufacturing	23.5	0.3	1.3
Trade, transportation, and utilities	78.8	0.4	0.5
Information	6.2	0.0	0.0
Financial activities	54.8	-1.3	-2.3
Professional and business services	50.5	-2.5	-4.7
Education and health services	60.0	4.1	7.3
Leisure and hospitality	34.6	0.4	1.2
Other services	13.4	0.3	2.3
Government	50.0	1.8	3.7

Source: U.S. BLS, Current Employment Statistics.

## Over-the-year change in the prices paid by urban consumers for selected categories

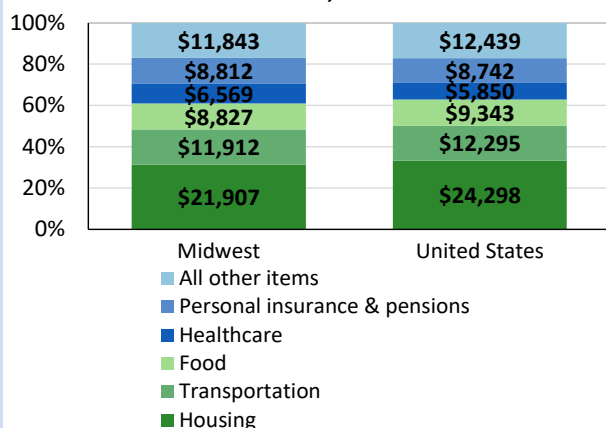
### 12-month percent change in CPI-U, January 2024



Source: U.S. BLS, Consumer Price Index.

## Average annual spending and percent distribution for selected categories

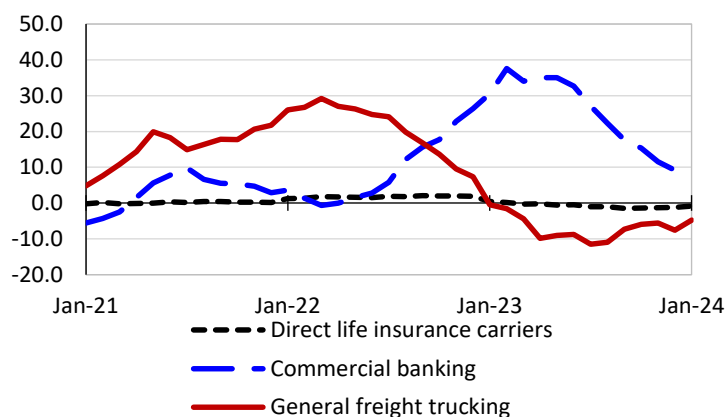
### Average annual expenditures, United States and Midwest, 2022



Source: U.S. BLS, Consumer Expenditure Survey.

## Over-the-year changes in the selling prices received by producers for selected industries nationwide

### 12-month percent changes in PPI



Source: U.S. BLS, Producer Price Index.

## Average hourly wages for selected occupations

Occupation	Des Moines area	United States
All occupations	\$28.82	\$29.76
Computer and information systems managers	68.48	83.49
Personal financial advisors	55.07	66.22
Heavy and tractor-trailer truck drivers	26.85	25.52
Licensed practical and licensed vocational nurses	25.09	26.86
Customer service representatives	21.45	19.80
Substitute teachers, short-term	18.14	20.52

Source: U.S. BLS, Occupational Employment and Wage Statistics, May 2022.

## Employer costs per hour worked for wages and selected employee benefits by geographic division

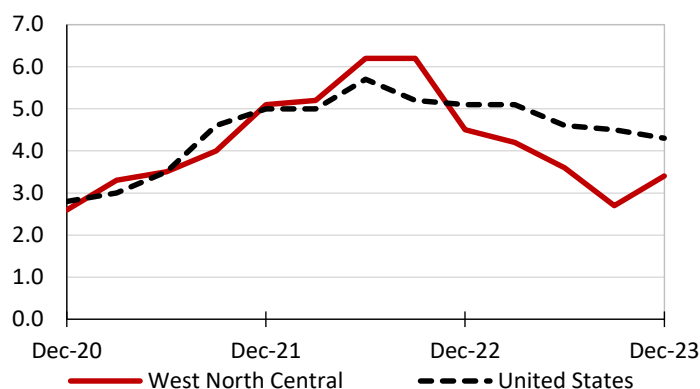
Private industry, September 2023	West North Central (1)	United States
Total compensation	\$35.82	\$41.53
Wages and salaries	24.75	29.34
Total benefits	11.07	12.19
Paid leave	2.49	3.09
Vacation	1.31	1.59
Supplemental pay	1.58	1.55
Insurance	3.16	3.04
Retirement and savings	1.13	1.41
Legally required benefits	2.71	3.11

(1) The states that compose the West North Central census division are: IA, KS, MN, MO, NE, ND, and SD.

Source: U.S. BLS, Employer Costs for Employee Compensation.

## Over-the-year changes in wages and salaries

### 12-month percent changes in ECI



Source: U.S. BLS, Employment Cost Index.