

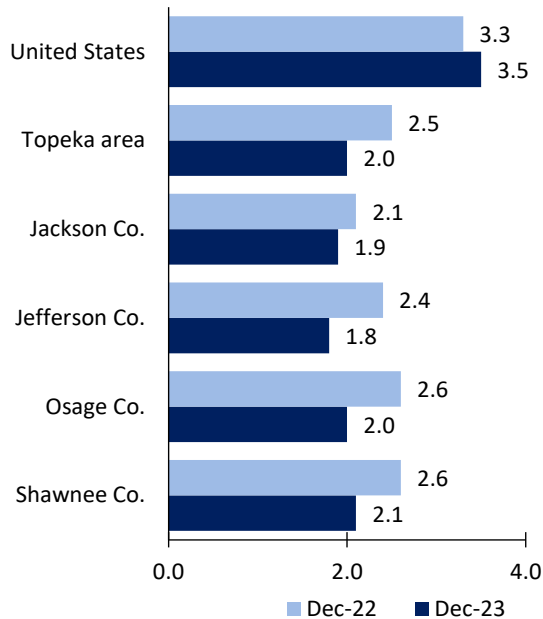
Topeka Area Economic Summary

Updated March 07, 2024

This summary presents a sampling of economic information for the area; supplemental data are provided for regions and the nation. Subjects include **unemployment, employment, wages, prices, spending, and benefits**. All data are not seasonally adjusted and some may be subject to revision. Area definitions may differ by subject. For more area summaries and geographic definitions, see www.bls.gov/regions/economic-summaries.htm.

Unemployment rates for the nation and selected areas

Unemployment rates

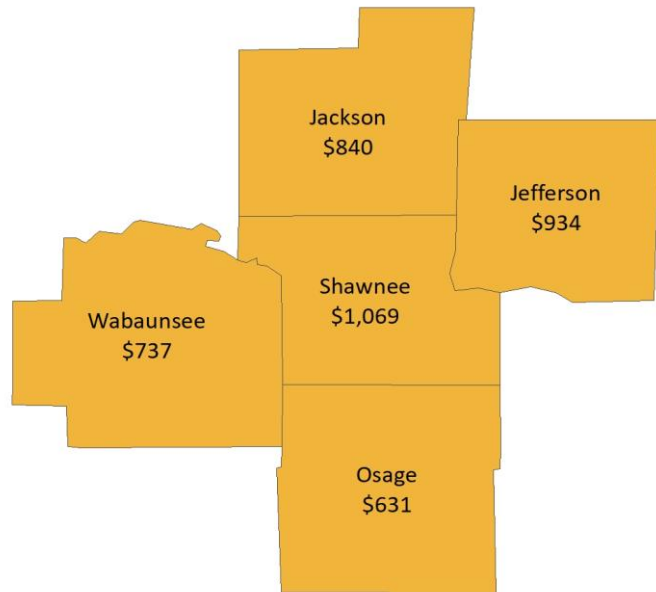


Source: U.S. BLS, Local Area Unemployment Statistics.

Average weekly wages for all industries by county

Topeka area, third quarter 2023

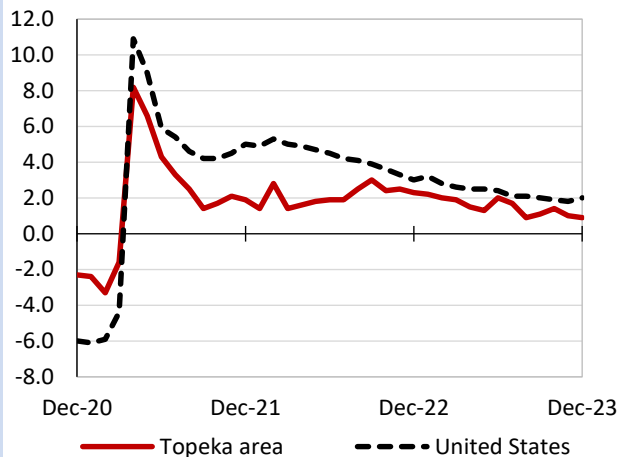
(U.S. = \$1,334; Area = \$1,038)



Source: U.S. BLS, Quarterly Census of Employment and Wages.

Over-the-year changes in employment on nonfarm payrolls and employment by major industry sector

12-month percent changes in employment



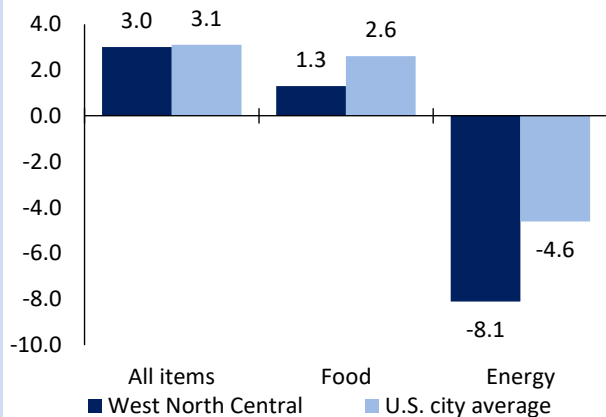
Source: U.S. BLS, Current Employment Statistics.

| Topeka area employment (number in thousands) | Dec. 2023 | Change from Dec. 2022 to Dec. 2023 | |
|---|-----------|---------------------------------------|---------|
| | | Number | Percent |
| Total nonfarm | 114.7 | 1.0 | 0.9 |
| Mining, logging, and construction | 5.9 | 0.2 | 3.5 |
| Manufacturing | 8.6 | 0.0 | 0.0 |
| Trade, transportation, and utilities | 18.5 | -0.7 | -3.6 |
| Information | 1.0 | 0.0 | 0.0 |
| Financial activities | 6.9 | -0.1 | -1.4 |
| Professional and business services | 13.9 | 0.0 | 0.0 |
| Education and health services | 20.1 | 0.9 | 4.7 |
| Leisure and hospitality | 8.6 | 0.1 | 1.2 |
| Other services | 5.0 | 0.0 | 0.0 |
| Government | 26.2 | 0.6 | 2.3 |

Source: U.S. BLS, Current Employment Statistics.

Over-the-year change in the prices paid by urban consumers for selected categories

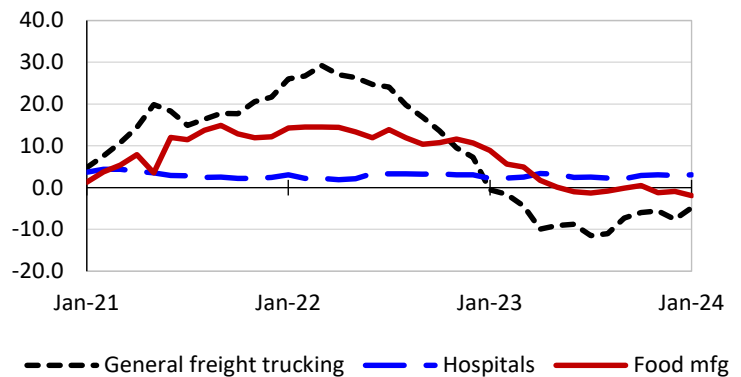
12-month percent change in CPI-U, January 2024



Source: U.S. BLS, Consumer Price Index.

Over-the-year changes in the selling prices received by producers for selected industries nationwide

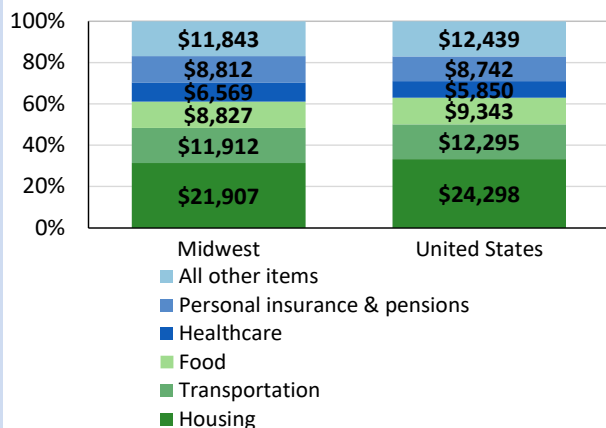
12-month percent changes in PPI



Source: U.S. BLS, Producer Price Index.

Average annual spending and percent distribution for selected categories

Average annual expenditures, United States and Midwest, 2022



Source: U.S. BLS, Consumer Expenditure Survey.

Average hourly wages for selected occupations

| Occupation | Topeka area | United States |
|--|-------------|---------------|
| All occupations | \$24.82 | \$29.76 |
| Management analysts | 31.35 | 50.32 |
| Operating engineers and other construction equipment operators | 23.70 | 28.57 |
| Social and human service assistants | 18.04 | 20.00 |
| Packaging and filling machine operators and tenders | 17.90 | 18.78 |
| Customer service representatives | 17.48 | 19.80 |
| Nursing assistants | 16.10 | 17.41 |

Source: U.S. BLS, Occupational Employment and Wage Statistics, May 2022.

Employer costs per hour worked for wages and selected employee benefits by geographic division

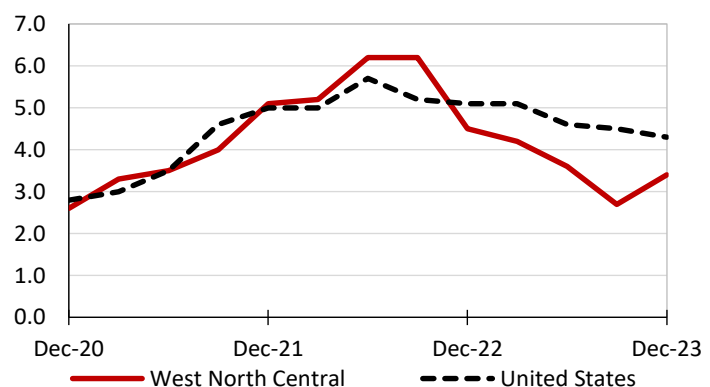
| Private industry, September 2023 | West North Central (1) | United States |
|----------------------------------|------------------------|---------------|
| Total compensation | \$35.82 | \$41.53 |
| Wages and salaries | 24.75 | 29.34 |
| Total benefits | 11.07 | 12.19 |
| Paid leave | 2.49 | 3.09 |
| Vacation | 1.31 | 1.59 |
| Supplemental pay | 1.58 | 1.55 |
| Insurance | 3.16 | 3.04 |
| Retirement and savings | 1.13 | 1.41 |
| Legally required benefits | 2.71 | 3.11 |

(1) The states that compose the West North Central census division are: IA, KS, MN, MO, NE, ND, and SD.

Source: U.S. BLS, Employer Costs for Employee Compensation.

Over-the-year changes in wages and salaries

12-month percent changes in ECI



Source: U.S. BLS, Employment Cost Index.