

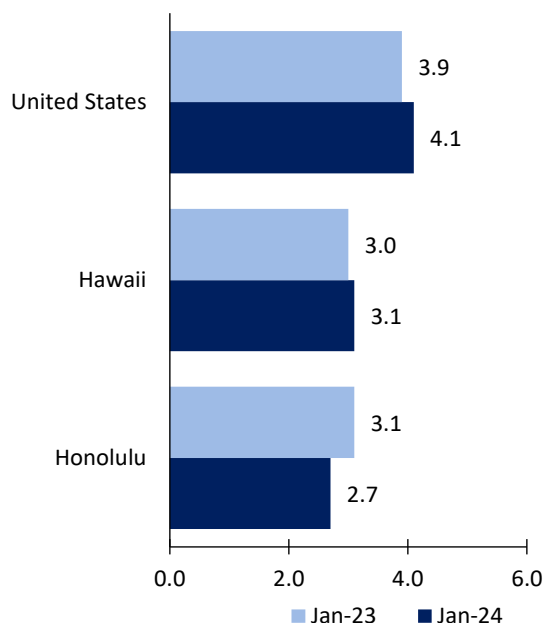
# Honolulu Area Economic Summary

Updated March 14, 2024

This summary presents a sampling of economic information for the area; supplemental data are provided for regions and the nation. Subjects include **unemployment, employment, wages, prices, spending, and benefits**. All data are not seasonally adjusted and some may be subject to revision. Area definitions may differ by subject. For more area summaries and geographic definitions, see [www.bls.gov/regions/economic-summaries.htm](http://www.bls.gov/regions/economic-summaries.htm).

## Unemployment rates for the nation and selected areas

### Unemployment rates



Source: U.S. BLS, Local Area Unemployment Statistics.

## Average weekly wages for all industries by county

### Honolulu area, third quarter 2023

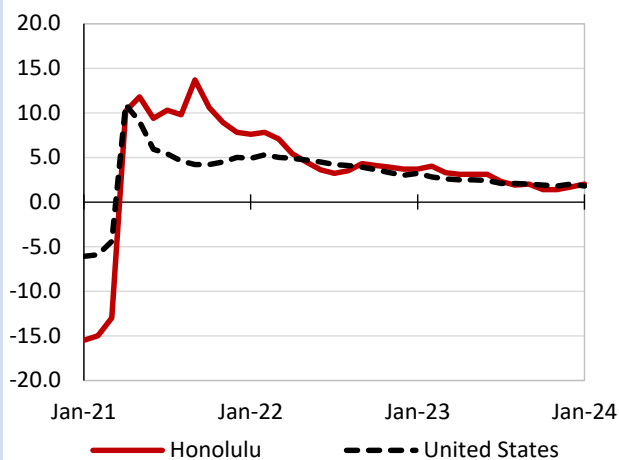
(U.S. = \$1,334; Area = \$1,275)



Source: U.S. BLS, Quarterly Census of Employment and Wages.

## Over-the-year changes in employment on nonfarm payrolls and employment by major industry sector

### 12-month percent changes in employment



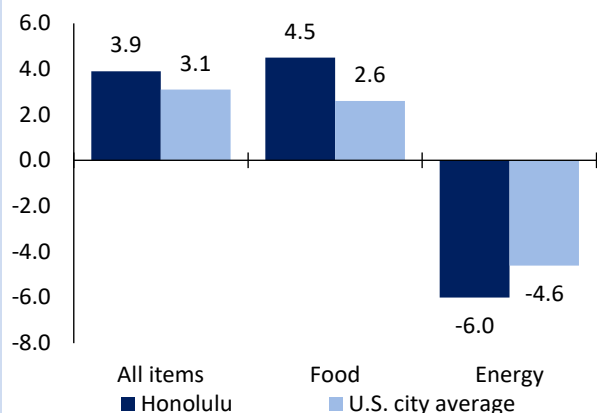
Source: U.S. BLS, Current Employment Statistics.

Honolulu employment (number in thousands)	Jan. 2024	Change from Jan. 2023 to Jan. 2024	
		Number	Percent
Total nonfarm	456.3	9.1	2.0
Mining, logging, and construction	28.9	2.2	8.2
Manufacturing	9.2	-0.1	-1.1
Trade, transportation, and utilities	81.4	0.2	0.2
Information	6.0	-1.6	-21.1
Financial activities	20.9	-0.4	-1.9
Professional and business services	56.8	1.0	1.8
Education and health services	67.9	1.5	2.3
Leisure and hospitality	72.2	3.1	4.5
Other services	19.3	-0.5	-2.5
Government	93.7	3.7	4.1

Source: U.S. BLS, Current Employment Statistics.

## Over-the-year change in the prices paid by urban consumers for selected categories

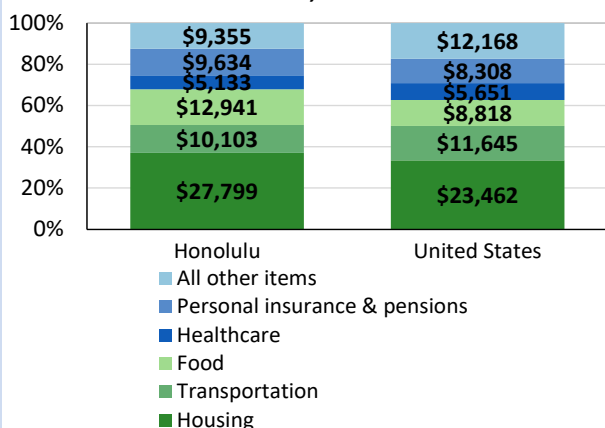
12-month percent change in CPI-U, January 2024



Source: U.S. BLS, Consumer Price Index.

## Average annual spending and percent distribution for selected categories

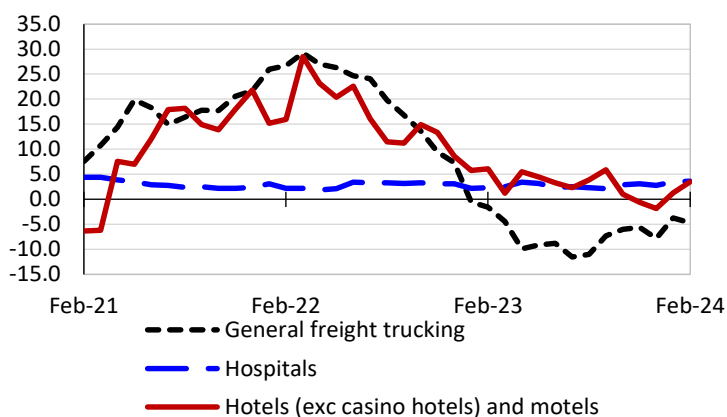
Average annual expenditures, United States and Honolulu, 2021-22



Source: U.S. BLS, Consumer Expenditure Survey.

## Over-the-year changes in the selling prices received by producers for selected industries nationwide

12-month percent changes in PPI



Source: U.S. BLS, Producer Price Index.

## Average hourly wages for selected occupations

Occupation	Honolulu	United States
All occupations	\$30.64	\$29.76
Registered nurses	55.38	42.80
Electricians	43.15	31.39
Chefs and head cooks	39.29	28.95
Accountants and auditors	35.01	41.70
Hotel, motel, and resort desk clerks	25.38	14.57
Cashiers	15.19	13.81

Source: U.S. BLS, Occupational Employment and Wage Statistics, May 2022.

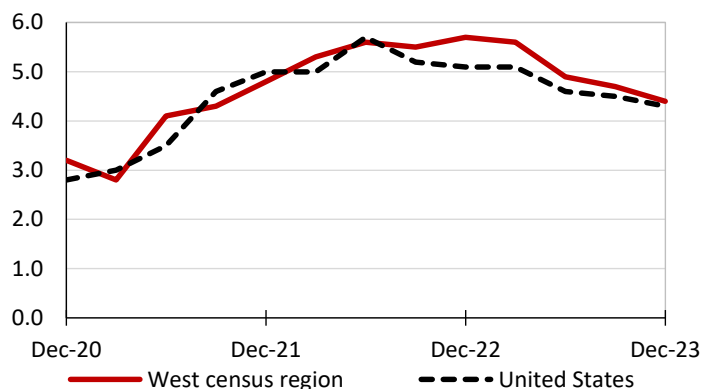
## Employer costs per hour worked for wages and selected employee benefits by geographic division

Private industry, December 2023	West census region	United States
Total compensation	\$45.15	\$43.11
Wages and salaries	31.95	30.33
Total benefits	13.20	12.77
Paid leave	3.39	3.26
Vacation	1.69	1.67
Supplemental pay	1.68	1.71
Insurance	3.09	3.14
Retirement and savings	1.55	1.50
Legally required benefits	3.49	3.17

Source: U.S. BLS, Employer Costs for Employee Compensation.

## Over-the-year changes in wages and salaries

12-month percent changes in ECI



Source: U.S. BLS, Employment Cost Index.