

NEW YORK-NEW JERSEY INFORMATION OFFICE, NEW YORK, NY
For release: Wednesday, October 28, 2009

NYLS - 7401

Technical information: Martin Kohli (646) 264-3620 • BLSInfoNewYork@bls.gov • www.bls.gov/ro2
Media contact: Michael L. Dolfman (212) 337-2500

CENSUS OF FATAL OCCUPATIONAL INJURIES, NEW YORK CITY: 2008
Fatal work injuries increased over the year

A total of 90 fatal work injuries were reported in New York City in 2008, the U.S. Bureau of Labor Statistics (BLS) reported today. Regional Commissioner Michael L. Dolfman noted that while these results are preliminary, the 2008 total was the third-lowest number of work-related fatalities reported in New York City since the start of the BLS fatality census in 1992. (See table A.) The 2008 total rose by 9 fatalities from the 81 recorded in 2007, the series low for the City. Nationwide, a total of 5,071 fatal work injuries were reported for 2008, a 10-percent decrease from 2007. (Final 2008 numbers will be released in April 2010.)

Table A. Fatal occupational injuries in the United States and New York City, by selected event or exposure, 2007 and 2008

Event or exposure	United States		New York City	
	2007	2008	2007	2008
Total	5,657	5,071	81	90
Highway incidents	1,414	1,149	5	5
Homicides	628	517	15	18
Caught in or crushed in collapsing materials	108	101	-	9
Fall to lower level	746	576	21	25
Contact with electric current	212	192	-	4
Fire—unintended or uncontrolled	77	93	-	6

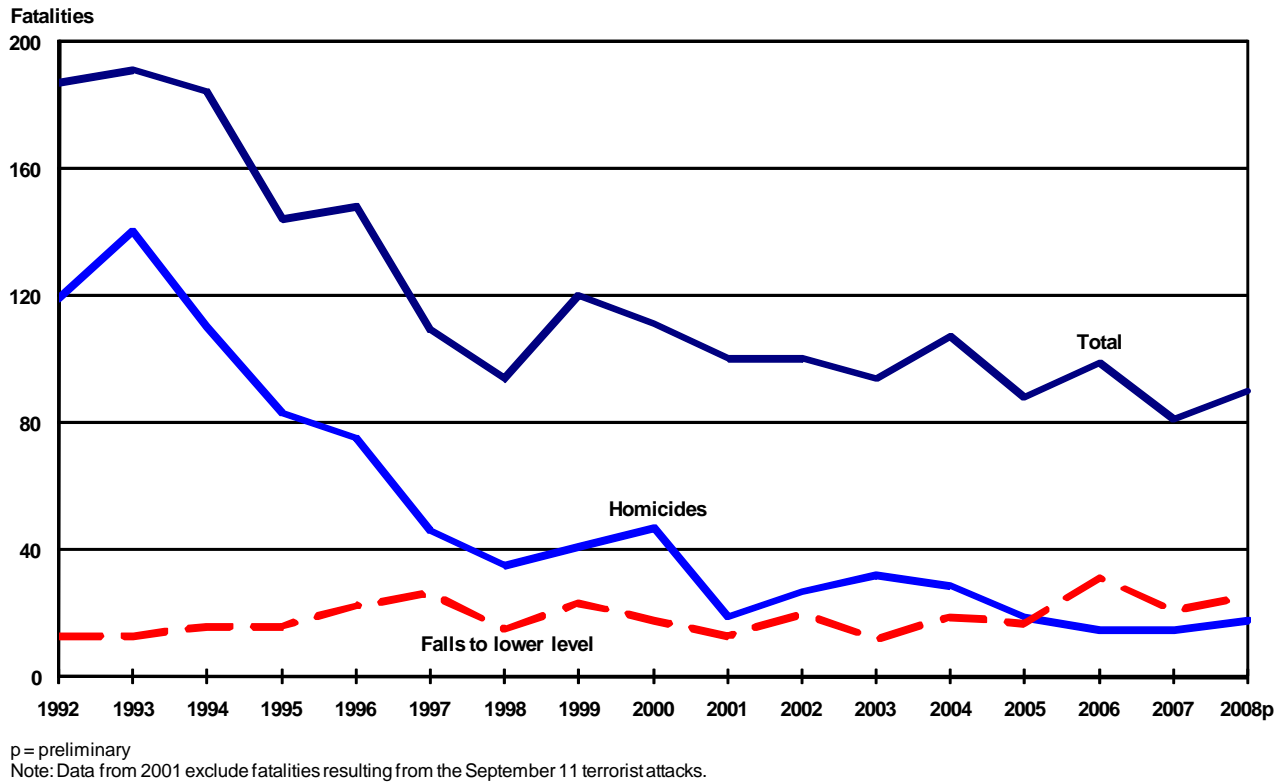
NOTE: Totals for 2008 are preliminary.

Falls to a lower level were the most frequent type of workplace fatality in New York City in 2008 accounting for 25 deaths, up from 21 in 2007. This category's 2008 count exceeded the number of such falls in all but 2 of the past 17 years. Workplace homicides increased from 15 in 2007 to 18 in 2008, the first upturn in 5 years. Workers caught in or crushed in collapsing materials resulted in nine fatalities. Workplace suicides, however, declined from 12 in 2007 to 8 in 2008. (See table 1.)



Round-the-clock recorded messages for the **Consumer Price Index** and a variety of other **Bureau of Labor Statistics** data are available by dialing the **New York-New Jersey Information Office's** main telephone number: **(646) 264-3600**. For recorded messages, press '2'.

Chart A. Total work-related fatalities, homicides, and falls to lower level, New York City, 1992-2008



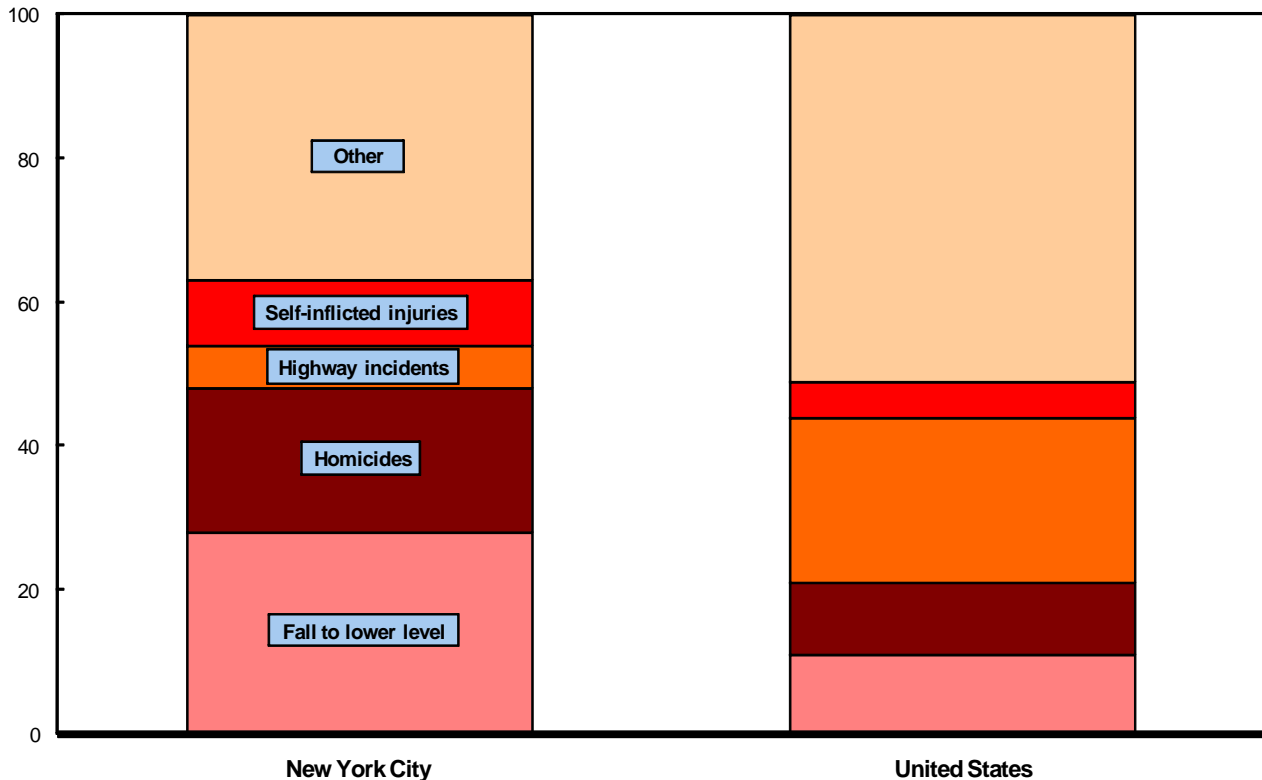
In the United States, highway incidents continued to be the most frequent fatal workplace event, accounting for 23 percent of fatal work injuries. (In New York City, 6 percent of all fatalities were attributed to this event.) Next most frequent were falls to a lower level, accounting for 11 percent of the national total, followed by homicides and being struck by an object or equipment (at 10 percent each). As these figures suggest, the distribution of workplace fatalities in New York City differed from the national distribution. In particular, the share of highway fatalities was lower in the City than for the nation as a whole, while the share of falls to a lower level was higher. (See chart B.)

Nationally, a total of 5,071 fatal work injuries were recorded in 2008, down 10 percent from the revised total of 5,657 fatalities recorded in 2007. These figures represent the smallest annual preliminary total since the Census of Fatal Occupational Injuries (CFOI) program was first conducted in 1992. Highway incidents totaled 1,149, a 19-percent decrease from 2007, and the lowest annual total since the census began. The count of 576 fatal falls to a lower level in 2008 was the lowest since 1993 when 534 were reported; the 2008 total represents an over-the-year decrease of 23 percent. The 508 workers who were fatally struck by objects or equipment was slightly higher than the series low recorded in 2007 (504).

Workplace homicides decreased by 18 percent from 628 in 2007 to 517 in 2008. The 2008 total is the lowest since the census began and has declined 52 percent from the high of 1,080 reported in 1994. Workplace suicides rose from 196 cases in 2007 to 251 cases in 2008, an increase of 28 percent and the highest number ever reported by the fatality census.

Chart B. Distribution of fatal occupational injuries, New York City and United States, 2008

Percent of all fatal events



Profile of fatal work injuries by industry, occupation, and demographic characteristics in New York City

Industry. Most workplace fatalities in New York City continued to occur in the construction sector, with 31 incidents in 2008, up from 24 in 2007. (See table 2.) In construction, falls to a lower level were the most frequent event, accounting for 52 percent of the sector's fatalities. The New York City construction sector accounted for 34 percent of all at-work deaths; nationally, construction accounted for nearly 20 percent of workplace deaths.

Government operations (of all types) reported 11 worker deaths, the next highest count among industry sectors in New York City. Homicides accounted for four of these fatalities. Transportation and warehousing had nine work fatalities, and retail trade had seven. No other sector experienced more than six workplace deaths in 2008.

Occupation. Three major occupational groups accounted for 60 percent of all the workplace fatalities in the City. Construction and extraction workers suffered 28 fatalities, 13 of which involved construction laborers. (See table 3.) Falls to a lower level were the most frequent type of fatality among construction and extraction workers, accounting for 16 incidents.

Transportation and material moving occupations had 20 deaths, 11 of which involved motor vehicle operators. Contact with objects and equipment was the most frequent type of fatality involving transportation and material moving workers.

Sales and related occupations had seven deaths, four of which involved supervisors. Homicides resulted in six workplace deaths and were the most frequent fatal incident among sales and related jobs. No other major occupational group suffered more than six deaths.

Demographics. Fifty-two percent of those fatally injured on the job in New York City were white, non-Hispanics. (See table 4.) Hispanic or Latino workers accounted for 23 percent; 13 percent were black, non-Hispanic or African-Americans; and 11 percent were Asian.

Self-employed workers incurred 16 percent of the on-the-job deaths in New York City, up from 9 percent in 2007. In the United States, self-employed workers accounted for 18 percent of all fatalities in 2007 and 20 percent in 2008.

Technical notes

Background of the program

The Census of Fatal Occupational Injuries, part of the BLS occupational safety and health statistics program, compiles a count of all fatal work injuries occurring in the U.S. during the calendar year. The program uses diverse State, federal, and independent data sources to identify, verify, and describe fatal work injuries. This assures counts are as complete and accurate as possible.

For technical information about the CFOI program, please go to the BLS Handbook of Methods on the BLS web site here: http://www.bls.gov/opub/hom/homch9_a1.htm. The technical information and definitions for the CFOI Program are in Chapter 9, Part III of the BLS Handbook of Methods.

Federal/state agency coverage

The Census of Fatal Occupational Injuries includes data for all fatal work injuries, whether the decedent was working in a job covered by the Occupational Safety and Health Administration (OSHA) or other federal or state agencies or was outside the scope of regulatory coverage. Thus, any comparison between the BLS fatality census counts and those released by other agencies should take into account the different coverage requirements and definitions being used by each agency.

Several federal and state agencies have jurisdiction over workplace safety and health. OSHA and affiliated agencies in states with approved safety programs cover the largest portion of the nation's workers. However, injuries and illnesses occurring in certain industries or activities, such as coal, metal, and nonmetal mining and highway, water, rail, and air transportation, are excluded from OSHA coverage because they are covered by other federal agencies, such as the Mine Safety and Health Administration and various agencies within the Department of Transportation.

Acknowledgements

BLS thanks the participating states, New York City, the District of Columbia, and Puerto Rico for their efforts in collecting accurate, comprehensive, and useful data on fatal work injuries. BLS also appreciates the efforts of all federal, state, local, and private sector agencies that submitted source documents used to identify fatal work injuries. Among these agencies are the Occupational Safety and Health Administration; the National Transportation Safety Board; the U.S. Coast Guard; the Mine Safety and Health Administration; the Employment Standards Administration (Federal Employees' Compensation and Longshore and Harbor Workers' divisions); the Department of Energy; state vital statistics registrars, coroners, and medical examiners; state departments of health, labor and industries, and workers' compensation agencies; state and local police departments; and state farm bureaus.

Table 1. Fatal occupational injuries in New York City by event or exposure, 2007 and 2008

Event or exposure ¹	2007	2008	
	Number	Number	Percent
Total.....	81	90	100
Transportation incidents.....	12	10	11
Highway incidents.....	5	5	6
Collision between vehicles, mobile equipment.....	-	3	3
Pedestrian, nonpassenger struck by vehicle, mobile equipment.....	6	5	6
Assaults and violent acts.....	27	26	29
Homicides.....	15	18	20
Shooting.....	12	10	11
Stabbing.....	-	3	3
Self-inflicted injury.....	12	8	9
Suicide, attempted suicide.....	12	8	9
Contact with objects and equipment.....	12	15	17
Struck by object.....	6	-	-
Struck by falling object.....	5	-	-
Caught in or compressed by equipment or objects.....	4	3	3
Caught in or crushed in collapsing materials.....	-	9	10
Falls.....	23	29	32
Fall to lower level.....	21	25	28
Fall from floor, dock, or ground level.....	3	-	-
Fall from ladder.....	4	5	6
Fall from roof.....	4	-	-
Fall from scaffold, staging.....	4	6	7
Fall on same level.....	-	4	4
Exposure to harmful substances or environments.....	5	4	4
Exposure to caustic, noxious, or allergenic substances.....	4	-	-
Contact with electric current.....	-	4	4
Fires and explosions.....	-	6	7
Fire--unintended or uncontrolled.....	-	6	7

¹ Based on the 1992 Occupational Injury and Illness Classification Manual. Includes other events and exposures, such as bodily reaction, in addition to those shown separately. (See note at end of tables.)

Table 2. Fatal occupational injuries in New York City by industry, 2007 and 2008

Industry ¹	NAICS code ¹	2007	2008	
		Number	Number	Percent
Total.....		81	90	100
Private industry.....		71	79	88
Goods producing.....		28	32	36
Construction.....	23	24	31	34
Construction of buildings.....	236	5	8	9
Residential building construction.....	2361	-	4	4
Nonresidential building construction.....	2362	3	4	4
Specialty trade contractors.....	238	17	22	24
Foundation, structure, and building exterior contractors.....	2381	8	12	13
Building equipment contractors.....	2382	-	5	6
Building finishing contractors.....	2383	5	4	4
Other specialty trade contractors.....	2389	3	-	-
Manufacturing.....	31-33	4	-	-
Service providing.....		43	47	52
Trade, transportation, and utilities.....		20	22	24
Wholesale trade.....	42	3	3	3
Retail trade.....	44-45	10	7	8
Food and beverage stores.....	445	3	-	-
Clothing and clothing accessories stores.....	448	3	-	-
Transportation and warehousing.....	48-49	7	9	10
Truck transportation.....	484	3	3	3
Transit and ground passenger transportation.....	485	3	3	3
Financial activities.....		3	4	4
Real estate and rental and leasing.....	53	3	3	3
Real estate.....	531	3	3	3
Professional and business services.....		9	6	7
Professional and technical services.....	54	3	-	-
Administrative and waste services.....	56	6	5	6
Education and health services.....		4	3	3
Health care and social assistance.....	62	3	-	-
Leisure and hospitality.....		5	5	6
Accommodation and food services.....	72	5	5	6
Food services and drinking places.....	722	5	5	6
Other services, except public administration.....	81	-	7	8
Government ²		10	11	12

¹ Based on the North American Industry Classification System, 2002.

² Includes fatalities to workers employed by governmental organizations regardless of industry. (See note at end of tables.)

Table 3. Fatal occupational injuries in New York City by occupation, 2007 and 2008

Occupation ¹	2007	2008	
	Number	Number	Percent
Total.....	81	90	100
Management occupations.....	-	3	3
Protective service occupations.....	9	5	6
Security guards and gaming surveillance officers.....	3	-	-
Security guards.....	3	-	-
Building and grounds cleaning and maintenance occupations.....	3	6	7
Building cleaning workers.....	3	4	4
Janitors and cleaners, except maids and housekeeping cleaners.....	-	4	4
Sales and related occupations.....	6	7	8
Supervisors, sales workers.....	3	4	4
Retail sales workers.....	3	3	3
Construction and extraction occupations.....	24	28	31
Supervisors, construction and extraction workers.....	3	4	4
Construction trades workers.....	21	23	26
Construction laborers.....	15	13	14
Electricians.....	-	4	4
Carpenters.....	3	-	-
Production occupations.....	4	4	4
Transportation and material moving occupations.....	14	20	22
Motor vehicle operators.....	8	11	12
Driver/sales workers and truck drivers.....	5	7	8
Truck drivers, heavy and tractor trailer.....	-	5	6
Taxi drivers and chauffeurs.....	3	-	-
Taxi drivers.....	3	-	-
Material moving workers.....	5	8	9
Laborers and material movers, hand.....	3	3	3

¹ Based on the 2000 Standard Occupational Classification system. (See note at end of tables.)

Table 4. Fatal occupational injuries in New York City by selected demographic characteristics, 2007 and 2008

Characteristic ¹	2007	2008	
	Number	Number	Percent
Total.....	81	90	100
Employee status			
Wage and salary ¹	74	76	84
Self-employed ²	7	14	16
Sex			
Male.....	76	81	90
Female.....	5	9	10
Age ³			
20 - 24 years.....	5	-	-
25 - 34 years.....	21	14	16
35 - 44 years.....	16	18	20
45 - 54 years.....	19	30	33
55 - 64 years.....	13	19	21
65 years and over.....	4	6	7
Race or ethnic origin ⁴			
White.....	31	47	52
Black or African-American.....	16	12	13
Asian.....	10	10	11
Hispanic or Latino.....	24	21	23

¹ May include volunteers and workers receiving other types of compensation.

² Includes self-employed workers, owners of unincorporated businesses and farms, paid and unpaid family workers, members of partnerships, and may include owners of unincorporated businesses.

³ Because there may have been no incidents reported for some ages or because the data do not meet publication criteria, information is not available for all age groups. In addition, some fatalities may have had insufficient information with which to determine the age of the decedents.

⁴ Persons identified as Hispanic or Latino may be of any race. The race categories shown exclude Hispanic and Latino workers.

NOTE: Data for 2008 are preliminary. Totals for major categories may include subcategories not shown separately. Percentages may not add to totals because of rounding. Dashes indicate no data reported or data do not meet publication criteria